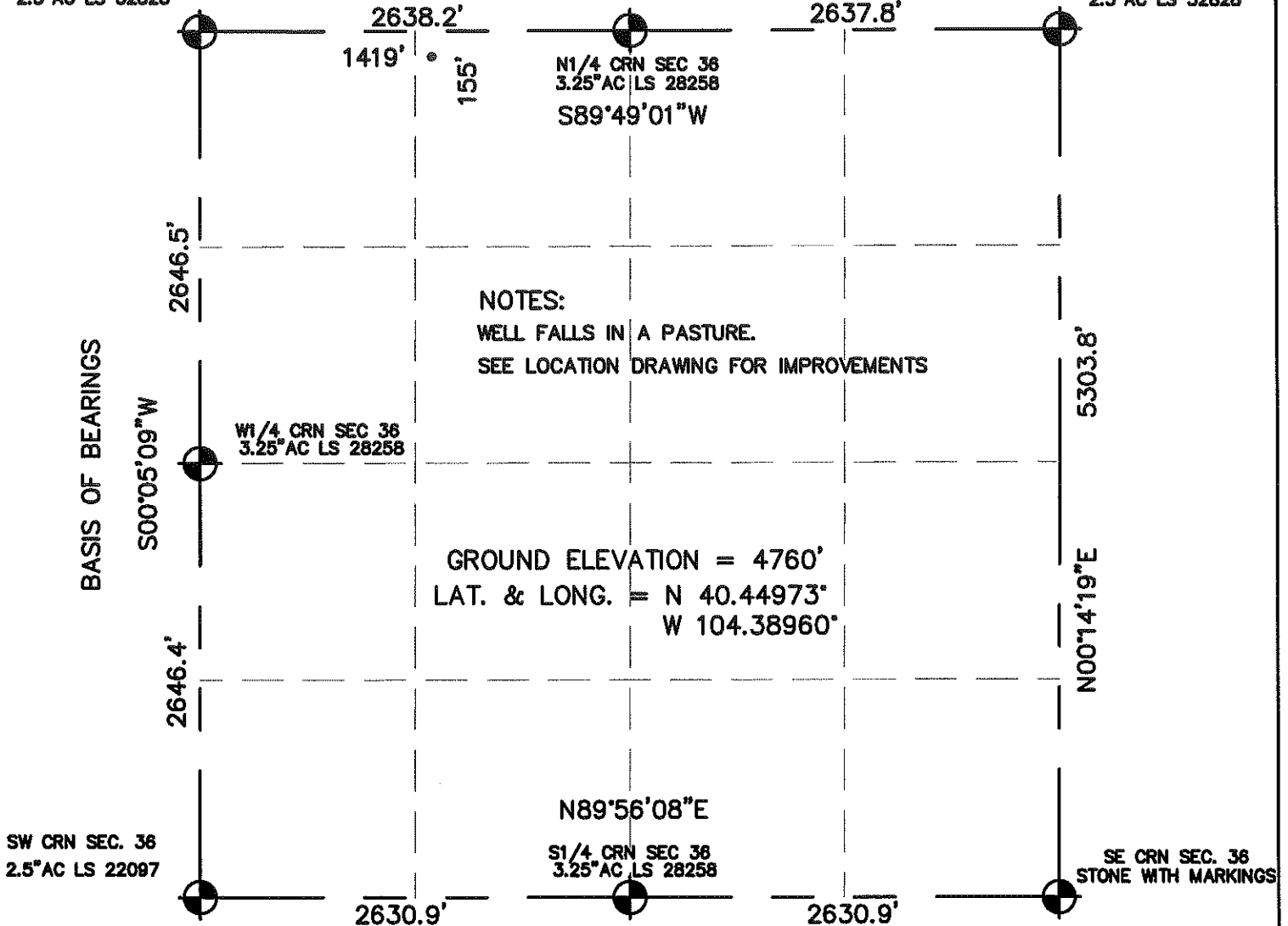


# WELL LOCATION CERTIFICATE

NW CRN SEC 36  
2.5°AC LS 32828

SECTION 36, TOWNSHIP 6 NORTH, RANGE 63 WEST, 6TH P.M.

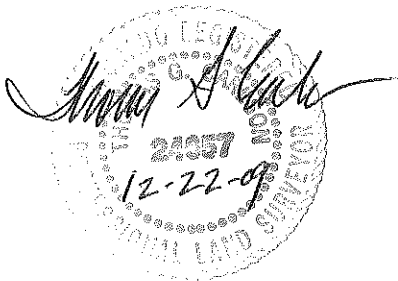
NE CRN SEC 36  
2.5°AC LS 32828



NOTES:  
WELL FALLS IN A PASTURE.  
SEE LOCATION DRAWING FOR IMPROVEMENTS

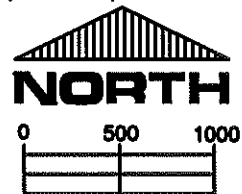
GROUND ELEVATION = 4760'  
LAT. & LONG. = N 40.44973°  
W 104.38960°

I HEREBY STATE TO PETROLEUM DEV. CORP. THAT THIS WELL LOCATION CERTIFICATE FOR THE WELL WELLS RANCH 36J IS LOCATED 155' FNL & 1419' FWL, SEC. 36, T6N, R63W, 6PM.



## LEGEND

- = FOUND MONUMENT
- = PROPOSED WELL
- = IMPROVEMENTS (AS LABELED)



SCALE 1" = 1000'

ELEVATION SOURCE = USGS 7.5' QUAD.MAP CONTOURS  
NGVD 1929 DATUM.

LAT. & LONG. ARE DIFFERENTIALLY CORRECTED (NAD'83)  
USING (DGPS) WITH (PDOP) VALUES LESS THAN SIX (6).

SHOWN DISTANCES ARE FIELD MEASURED - EXTERIOR SECTION LINES  
ARE DRAWN TO SCALE (BEST APPROX. OR FOUND MONUMENT ).

THOMAS G. CARLSON, PLS 24657  
HORSESHOE SURVEYING, LLC

THIS IS NOT A MONUMENTED BOUNDARY SURVEY, IT IS ONLY A  
DRAWING INTENDED TO DEPICT THE WELL LOCATION TO SECTION LINES.

DISTANCES TO WELL SHOWN PERPENDICULAR  
TO SECTION LINES.

PREPARED BY:		HORSESHOE SURVEYING, LLC PO BOX 150458 LAKEWOOD, CO 80215 (720)872-0198		WELL NAME: WELLS RANCH 36J	
DRAWING DATE: 12-22-09		BY: TGC		LOCATION: WELD COUNTY, CO NW1/4, SEC. 36, T6N, R63W, 6TH P.M.	
FIELD DATE: 12-22-09		CHKD:		JOB NO. SHEET NO. 1 OF 1	