

Company XTO Energy Inc.
 Well Hill Ranch 16-09
 Field Purgatoire River
 County Las Animas State Colorado

Location: API #: 05 071 08473 00
 1910' FSL & 628' FEL
 SEC 16 TWP 35S RGE 67W
 Permanent Datum Ground Level Elevation 7762'
 Log Measured From Ground Level
 Drilling Measured From Ground Level
 Other Services
 temp
 neutron
 Elevation
 K.B. 7762'
 D.F. ----
 G.L. ----

Date	11-08-05
Run Number	One
Depth Driller	2085'
Depth Logger	1475'
Bottom Logged Interval	1473'
Top Log Interval	Surface
Open Hole Size	7 7/8"
Type Fluid	Water
Density / Viscosity	///
Max. Recorded Temp.	105
Estimated Cement Top	340'
Time Well Ready	Portable Mast
Time Logger on Bottom	9:00 a.m.
Equipment Number	T677
Location	Trinidad
Recorded By	L. Smith
Witnessed By	Mr. Bill Blatnick

Borehole Record				Tubing Record			
Run Number	Bit	From	To	Size	Weight	From	To

Casing Record	Size	Wgt/Ft	Top	Bottom
Surface String	8 5/8"		0	222'
Prot. String				
Production String				
Liner				

<<< Fold Here >>>

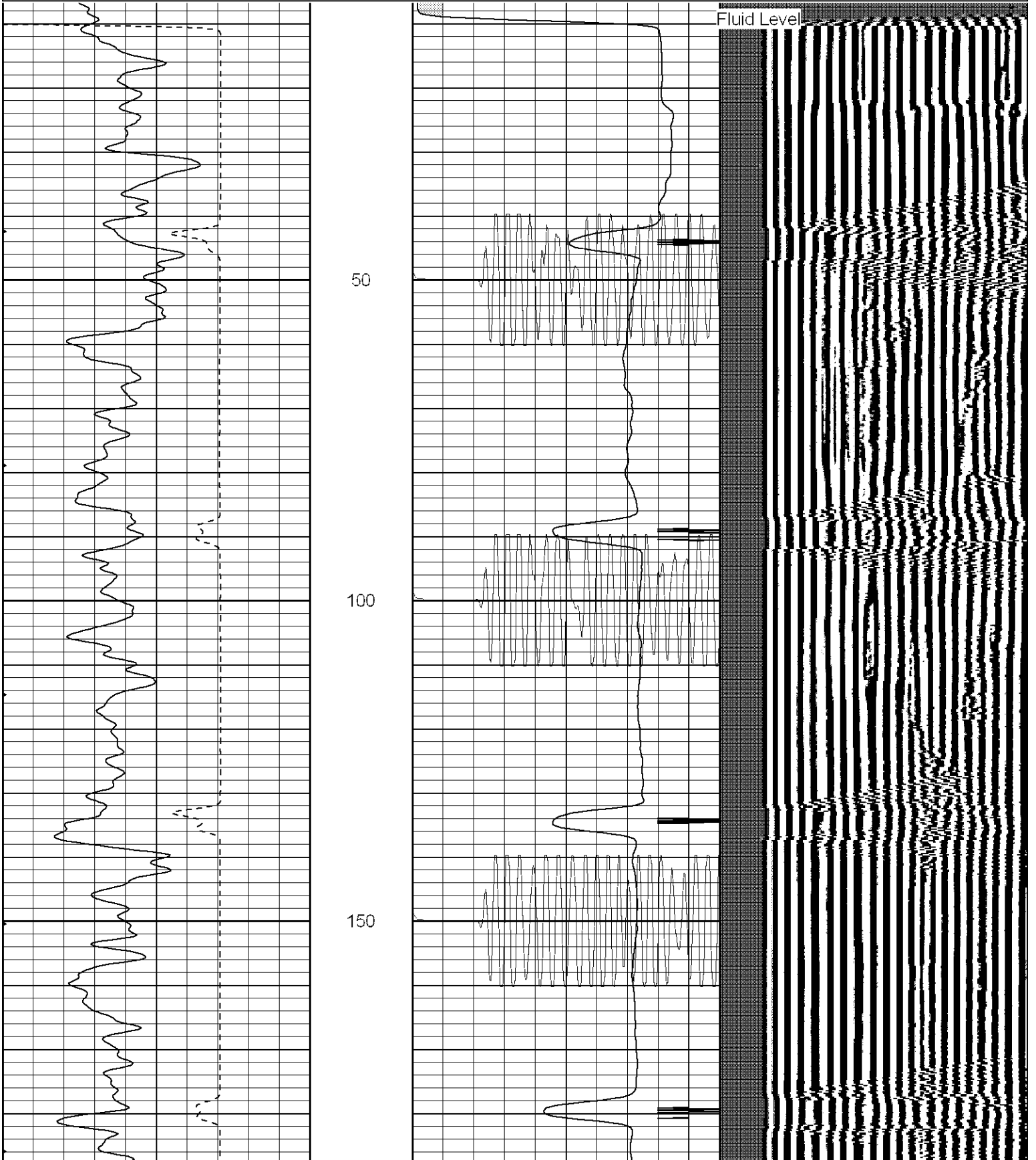
All interpretations are opinions based on inferences from electrical or other measurements and we cannot and do not guarantee the accuracy or correctness of any interpretation, and we shall not, except in the case of gross or willful negligence on our part, be liable or responsible for any loss, costs, damages, or expenses incurred or sustained by anyone resulting from any interpretation made by any of our officers, agents or employees. These interpretations are also subject to our general terms and conditions set out in our current Price Schedule.

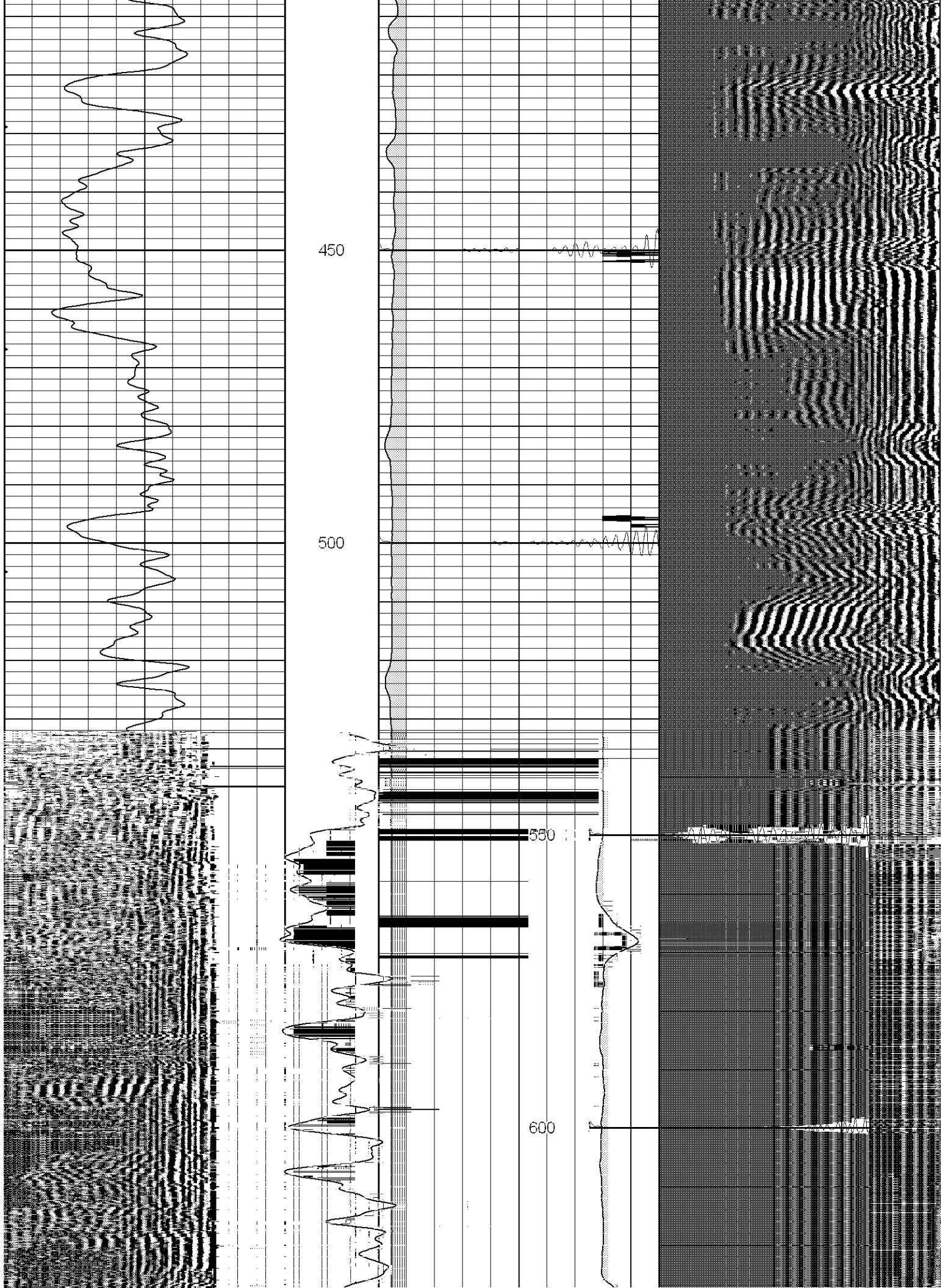
Comments

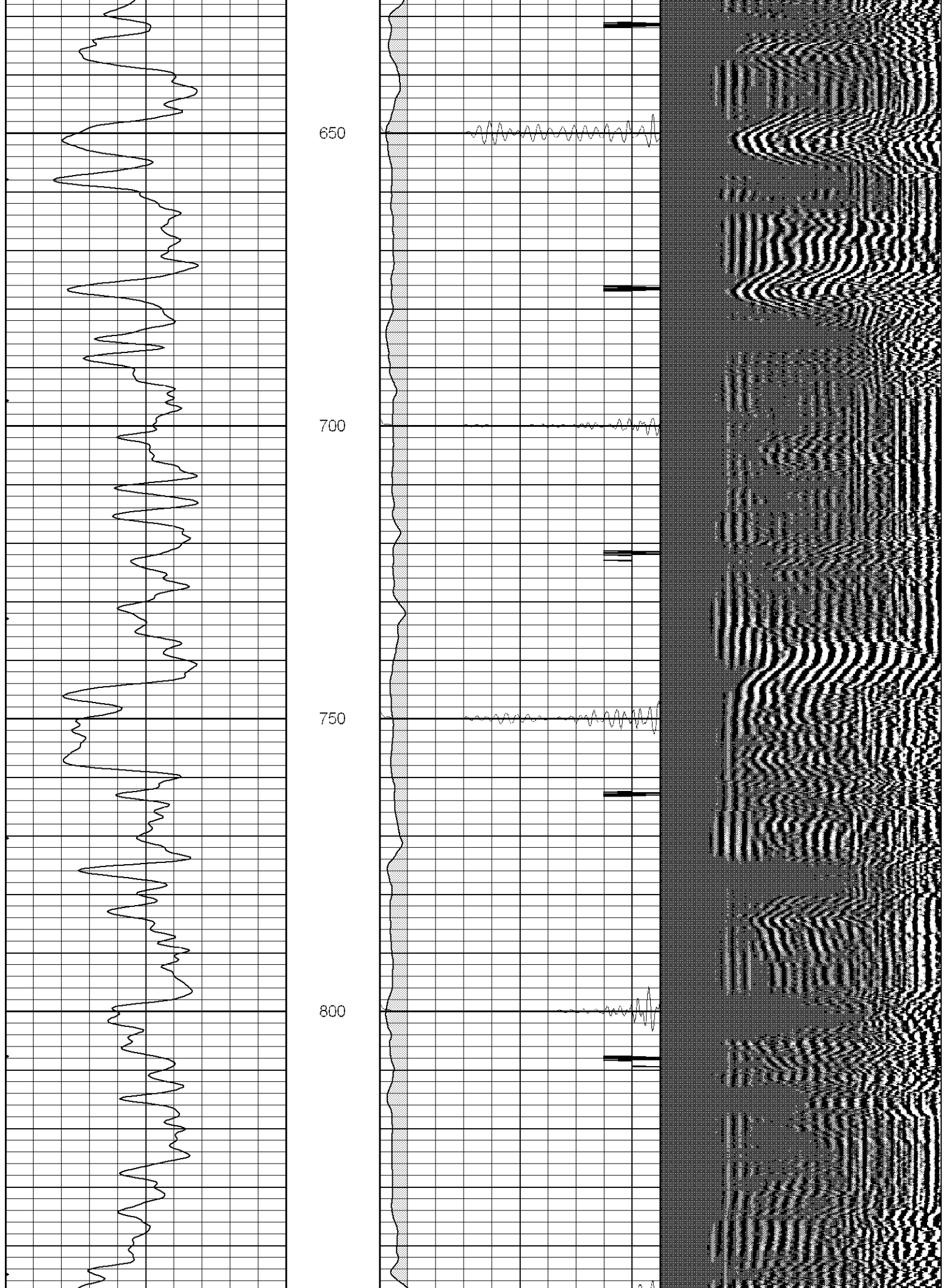
Dead Horse right fork stay left left at bottom of hill.

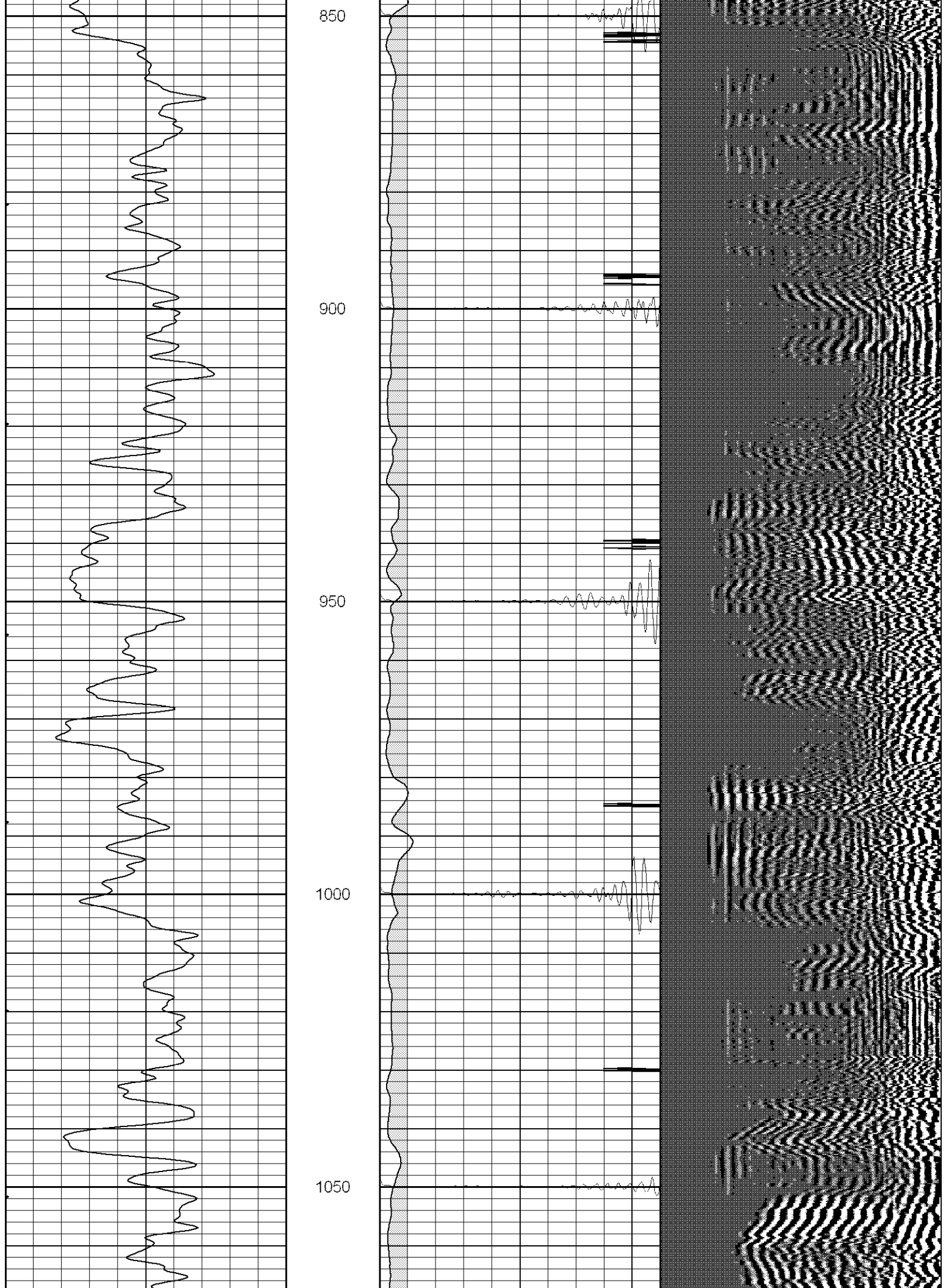
Database File: xtohr1609110805b.db
 Dataset Pathname: pass3.2
 Presentation Format: cblrt
 Dataset Creation: Tue Nov 08 10:41:28 2005 by Calc Warrior 7.0 STD Ope
 Charted by: Depth in Feet scaled 1:240

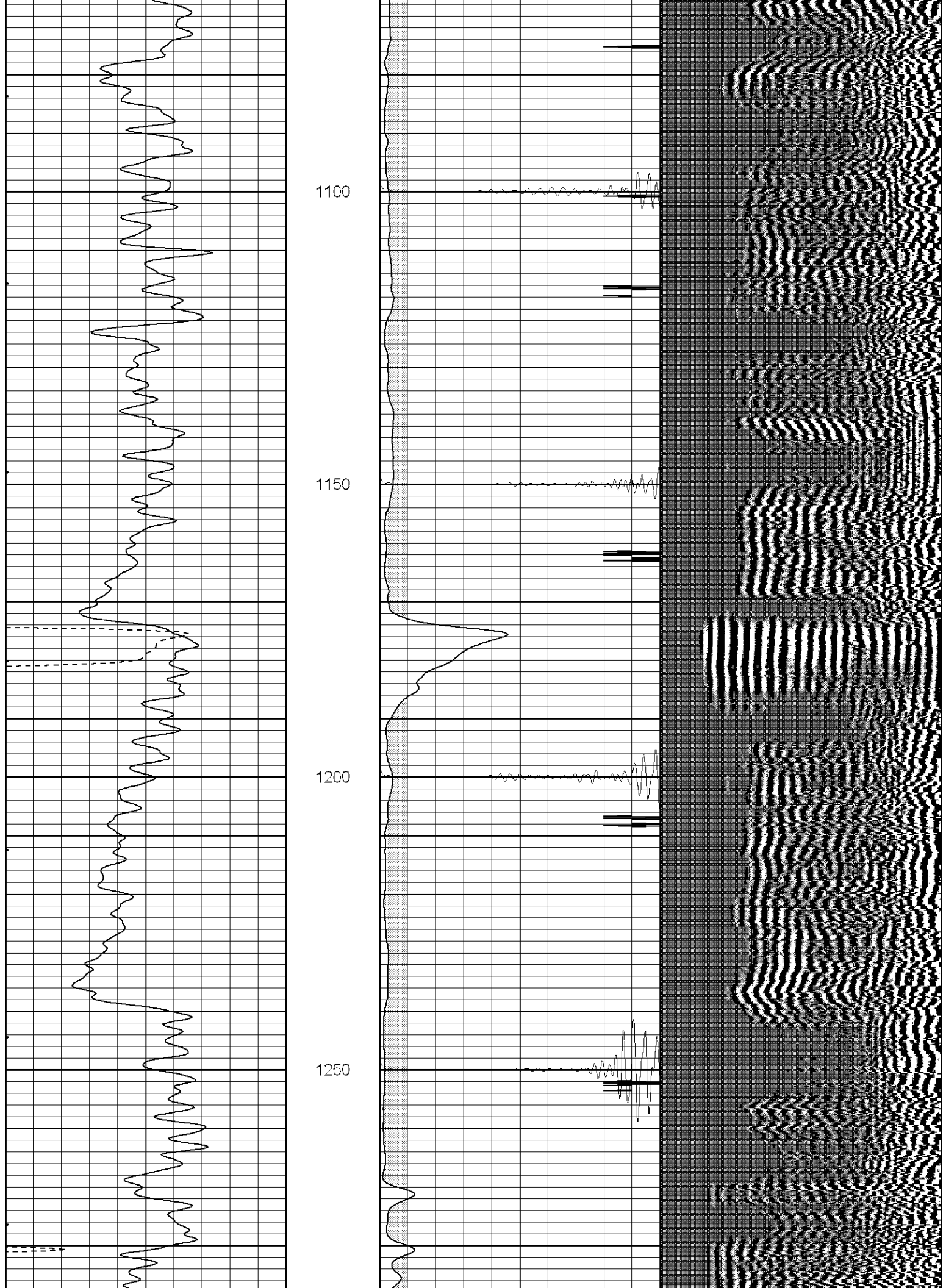
0	GR (GAPI)	200	0	AMP3 (mV)	100	200	Variable Density	1200
0	MINMK	80	18	CCL	-2			
400	TT3 (usec)	200	100	CBL5	1200			

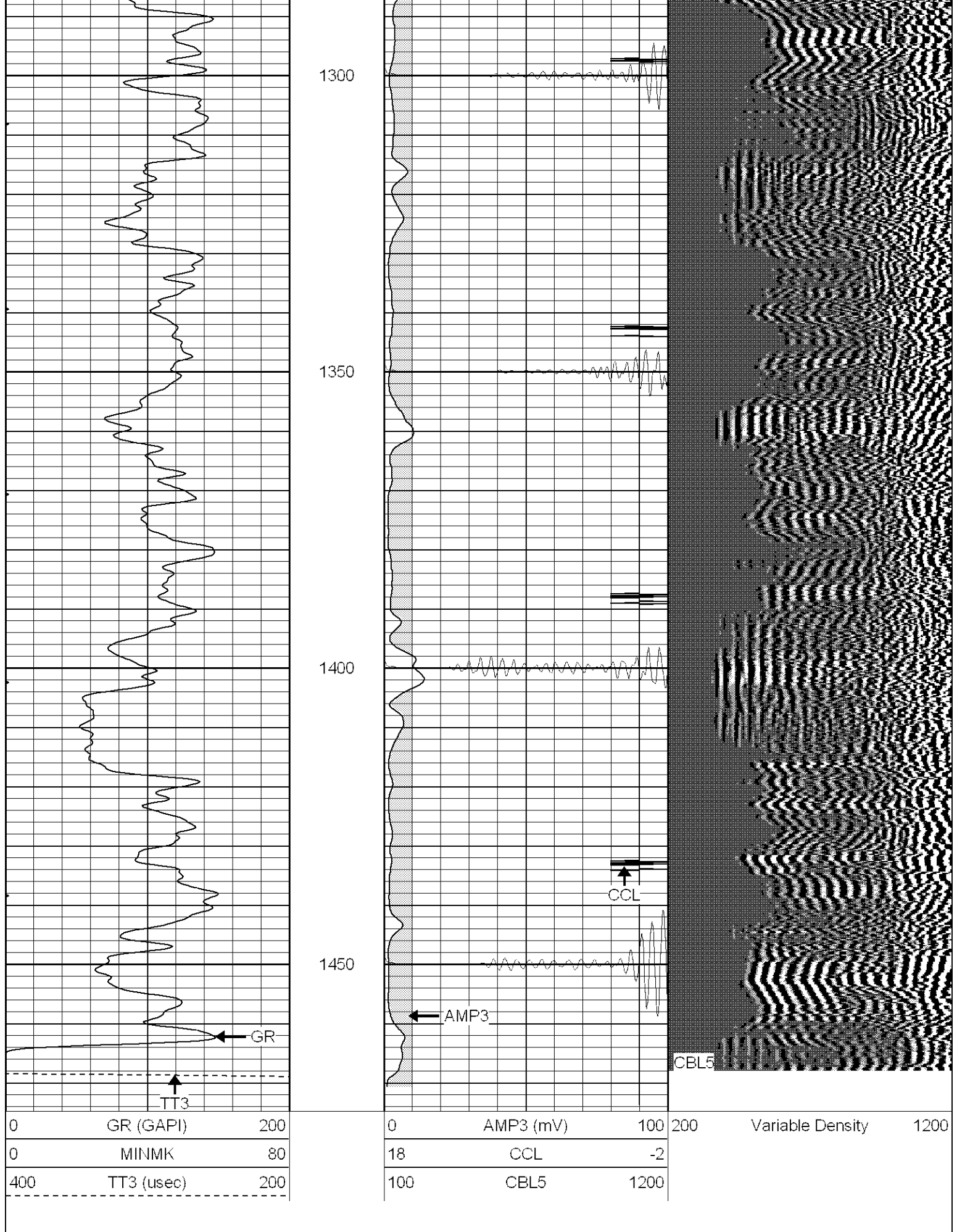










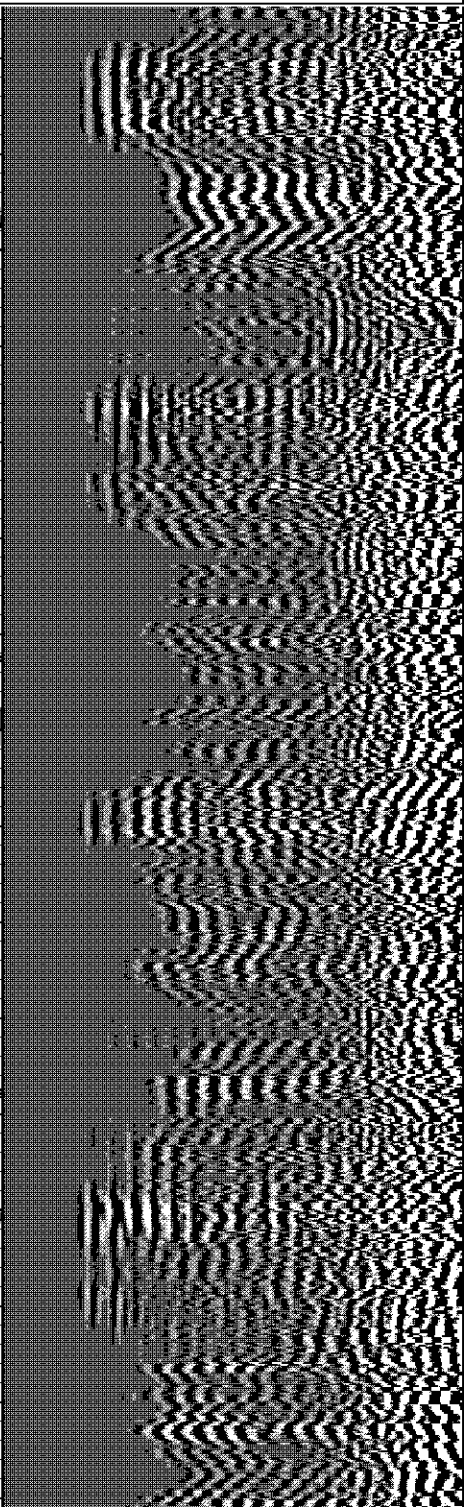
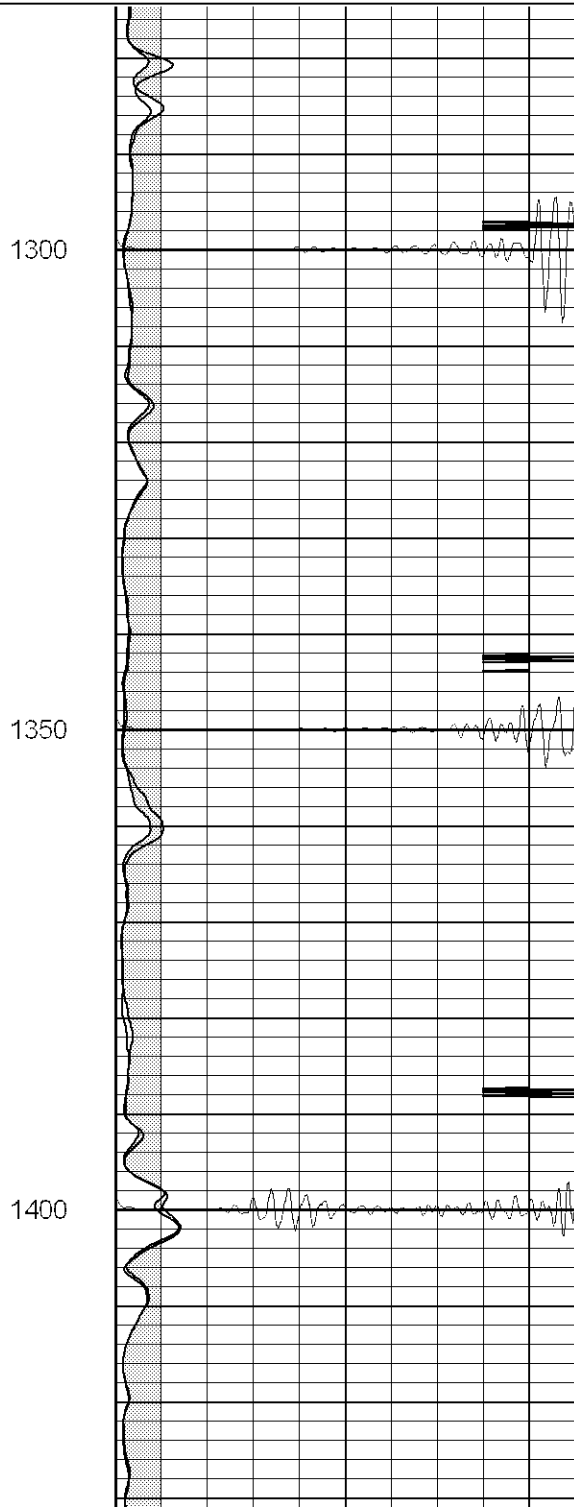
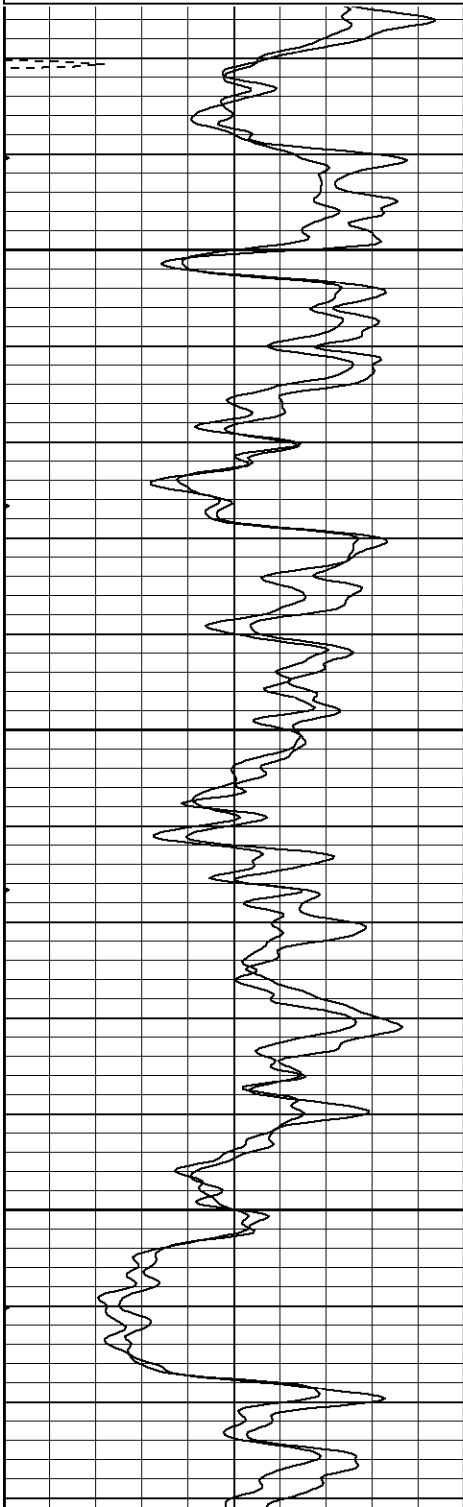


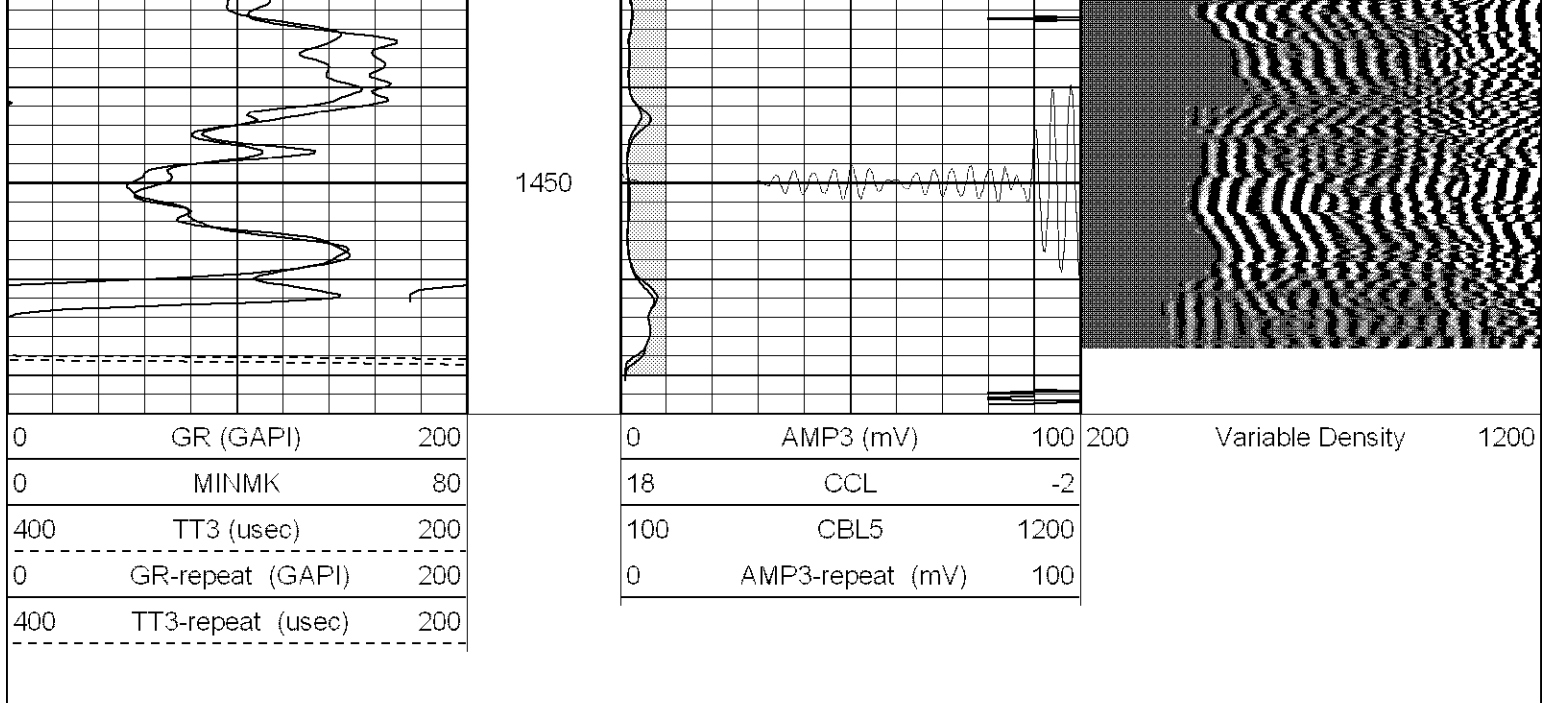
Database File: xtohr1609110805b.db
Dataset Pathname: pass2.1
Presentation Format: cblrt
Dataset Creation: Tue Nov 08 10:43:31 2005 by Calc Warrior 7.0 STD Ope
Charted by: Depth in Feet scaled 1:240

0	GR (GAPI)	200
0	MINMK	80
400	TT3 (usec)	200
0	GR-repeat (GAPI)	200
400	TT3-repeat (usec)	200

0	AMP3 (mV)	100
18	CCL	-2
100	CBL5	1200
0	AMP3-repeat (mV)	100

200 Variable Density 1200





Cement Bond Log Calibration Report

Serial Number: Titan5
 Tool Model: T5
 Performed: Tue Nov 08 09:22:46 2005

Depth: 214.013 ft
 Casing Diameter: 5.5 in

	3' Spacing	5' Spacing	
Signal Zero:	1	0	mV
Calibrated Amplitude:	85	85	mV
Reading at Signal Zero:	-0.00380859	-0.00378418	V
Reading in Free Pipe:	1.12	1.27778	V

Gain: 74.7458 66.325
 Offset: 1.28468 0.250986

Gamma Ray Calibration Report

Serial Number: Titan5
 Tool Model: T2
 Performed: Mon Nov 07 09:23:40 2005

Calibrator Value: 1.0 GAPI

Background Reading: 0.0 cps
 Calibrator Reading: 1.0 cps

Sensitivity: 1.1000 GAPI/cps

Sensor	Offset (ft)	Schematic	Description	Len (ft)	OD (in)	Wt (lb)
CHD	12.95		None	0.75	1.50	5.00
GR	10.93		GR-T2 (Titan5) Titan5	2.52	2.44	25.00
WVF5 WVF3	6.78 5.78		CBL-T5 (Titan5)	7.23	2.44	110.00

CENT	2.44		B star centralizer	0.29	1.50	0.50
CCL	0.83		CCL-T5 (Titan5) Long	2.15	2.75	15.00
<p>Dataset: /field/well/run1/_plots/_jobs_/cbl Total Length: 12.95 ft Total Weight: 155.50 lb O.D. 2.75 in</p>						