



SUPERIOR
Black Lick, Pa.
Mercer, Pa.
Wooster, Oh.
Cleveland, Ok.
Trinidad, Co.

DUAL INDUCTION LOG

Company XTO Energy Inc.
Well Golden Eagle 32-02
Field Purgatoire River
County Las Animas State Colorado

Location: API # : 05 071 09113 00

1317' FNL & 1906' FEL

SEC 32 TWP 33S RGE 67W

Permanent Datum Ground Level Elevation 7392'
Log Measured From Ground Level
Drilling Measured From Ground Level

Other Services
CDL
NEUTRON
Elevation
K.B. -----
D.F. -----
G.L. 7392'

Date 3-19-07

Run Number One

Depth Driller 2035'

Depth Logger 2032'

Bottom Logged Interval 2030'

Top Log Interval Surface Casing

Casing Driller 8 5/8" @ 778'

Casing Logger 780'

Bit Size 7 7/8"

Type Fluid in Hole Water

Density / Viscosity ///

pH / Fluid Loss ///

Source of Sample ///

Rm @ Meas. Temp ///

Rmf @ Meas. Temp ///

Rmc @ Meas. Temp ///

Source of Rmf / Rmc ///

Rm @ BHT ///

Time Circulation Stopped 6:30 P.M.

Time Logger on Bottom 8:45 P.M.

Maximum Recorded Temperature 112 DEG F

Equipment Number 7701

Location Trinidad

Recorded By M. Norton

Witnessed By Mr. Don Johnson

>>> Fold Here >>>

All interpretations are opinions based on inferences from electrical or other measurements and we cannot and do not guarantee the accuracy or correctness of any interpretation, and we shall not, except in the case of gross or willful negligence on our part, be liable or responsible for any loss, costs, damages, or expenses incurred or sustained by anyone resulting from any interpretation made by any of our officers, agents or employees. These interpretations are also subject to our general terms and conditions set out in our current Price Schedule.

Comments

Well Directions:

Second Bosque entrance four miles past weston turn left, first left (old railroad tracks)
first right, at Y stay left, at T stay right to location.



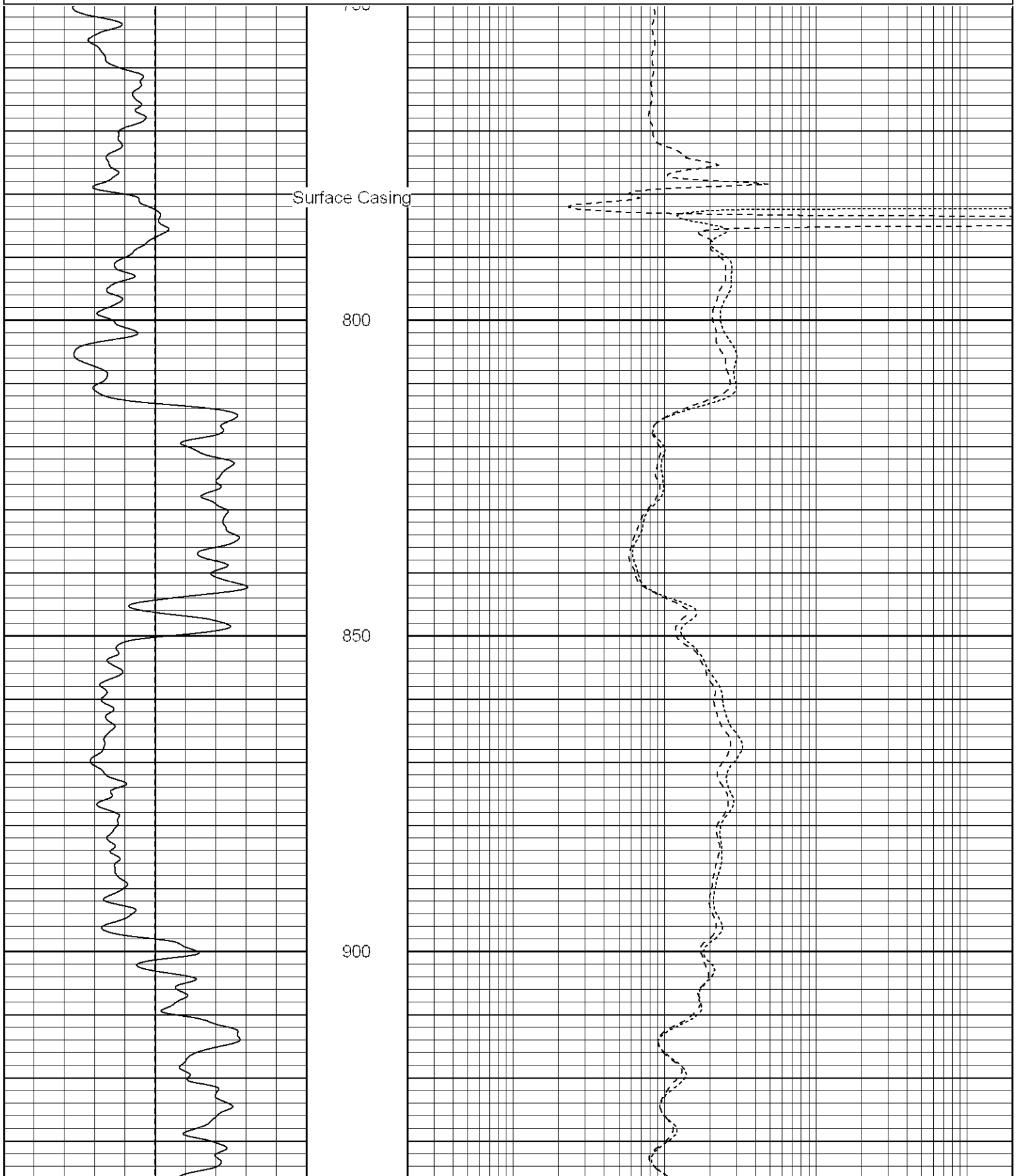
SUPERIOR
Black Lick, Pa.
Mercer, Pa.
Wooster, Oh.
Cleveland, Ok.
Trinidad, Co.

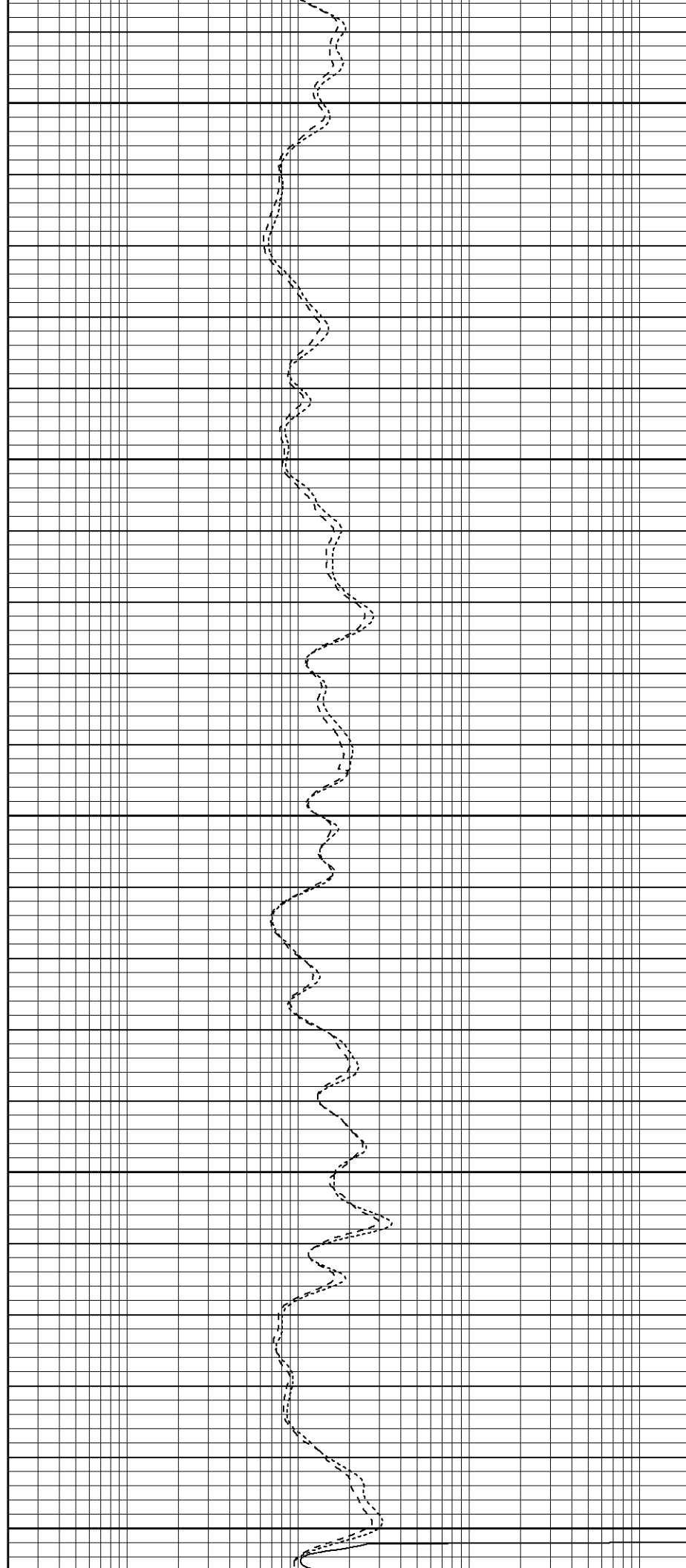
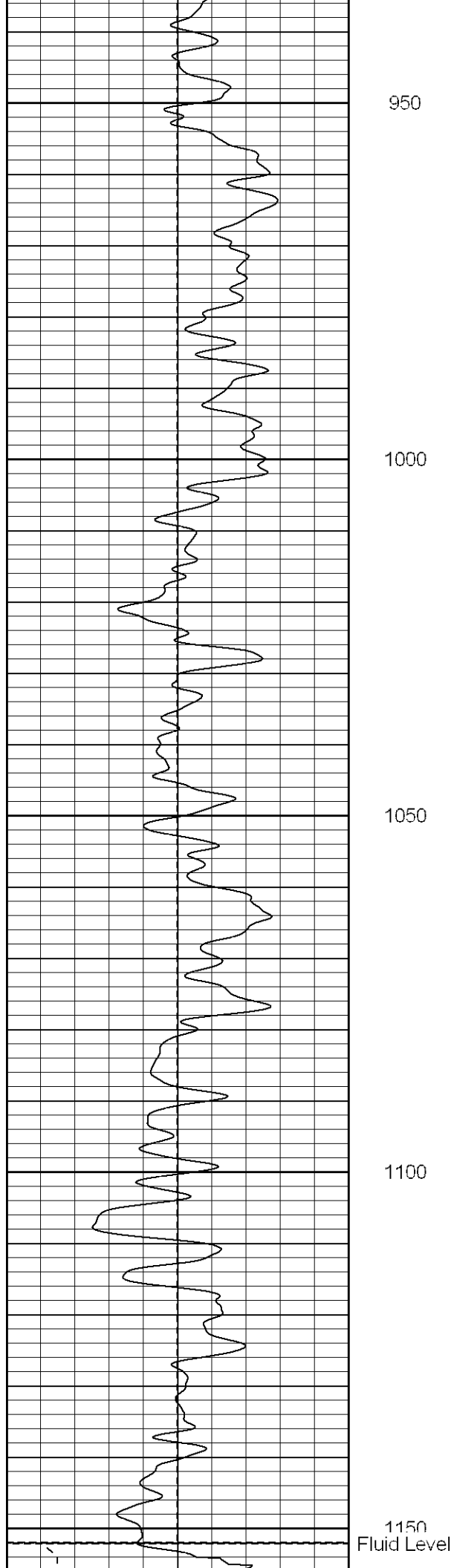
Main Pass

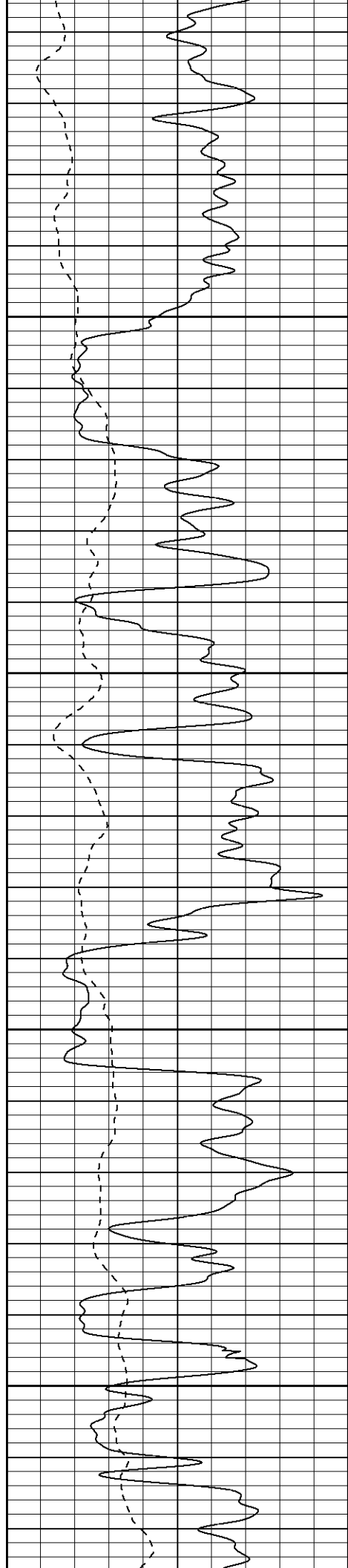
Database File: xtoge3202.db
Dataset Pathname: pass2.1
Presentation Format: dil
Dataset Creation: Mon Mar 19 22:39:20 2007 by Calc Open-Cased 061129
Charted by: Depth in Feet scaled 1:240

0	GR (GAPI)	200
-100	SP (mV)	100

0.2	RILM (Ohm-m)	2000
0.2	RILD (Ohm-m)	2000
0.2	RLL3 (Ohm-m)	2000





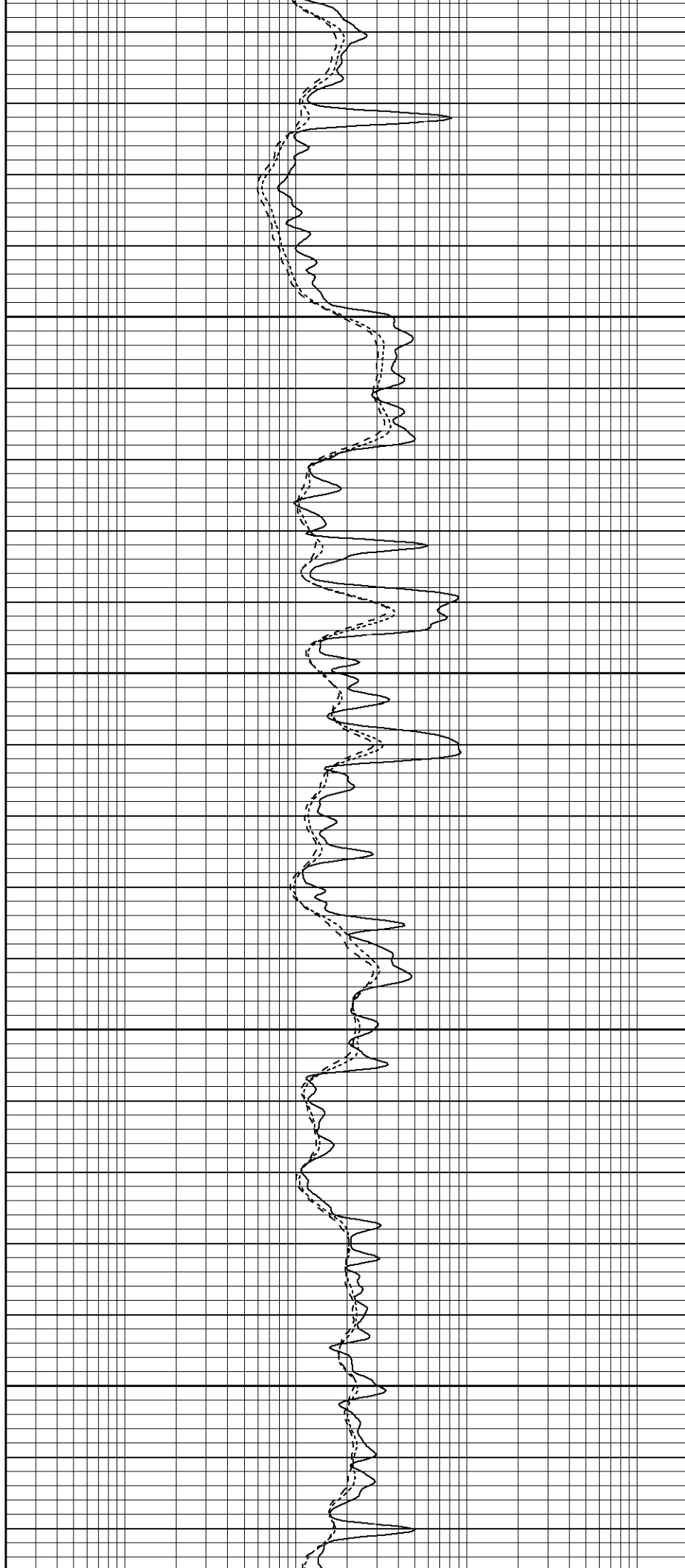


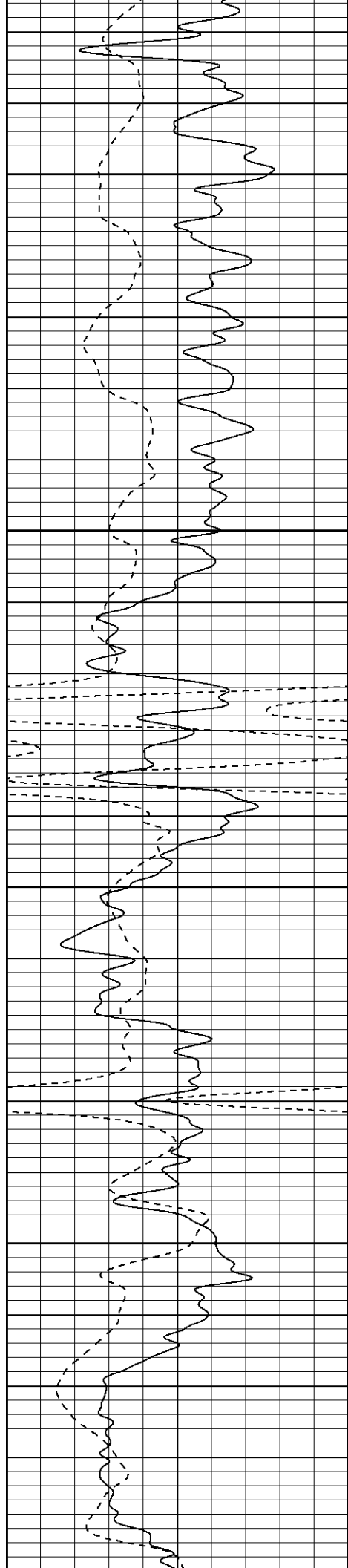
1200

1250

1300

1350



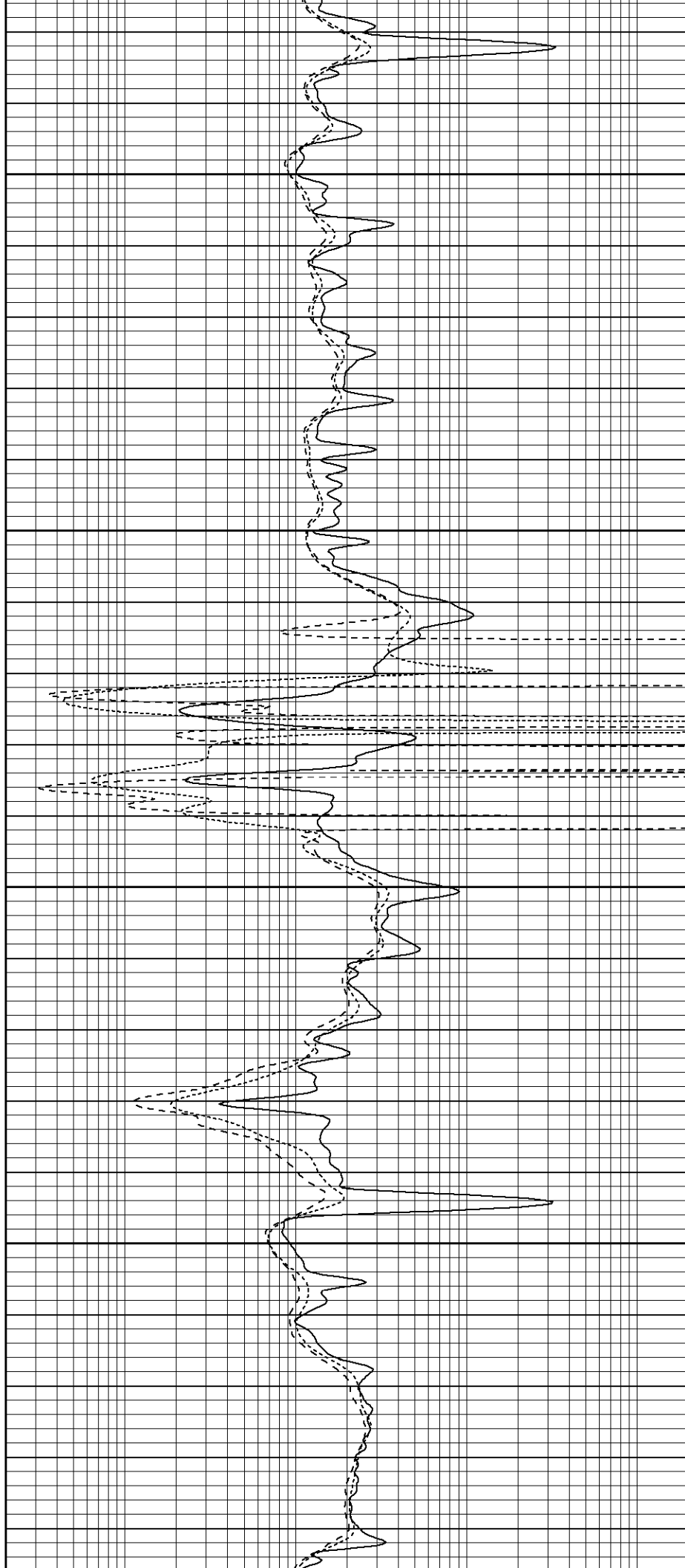


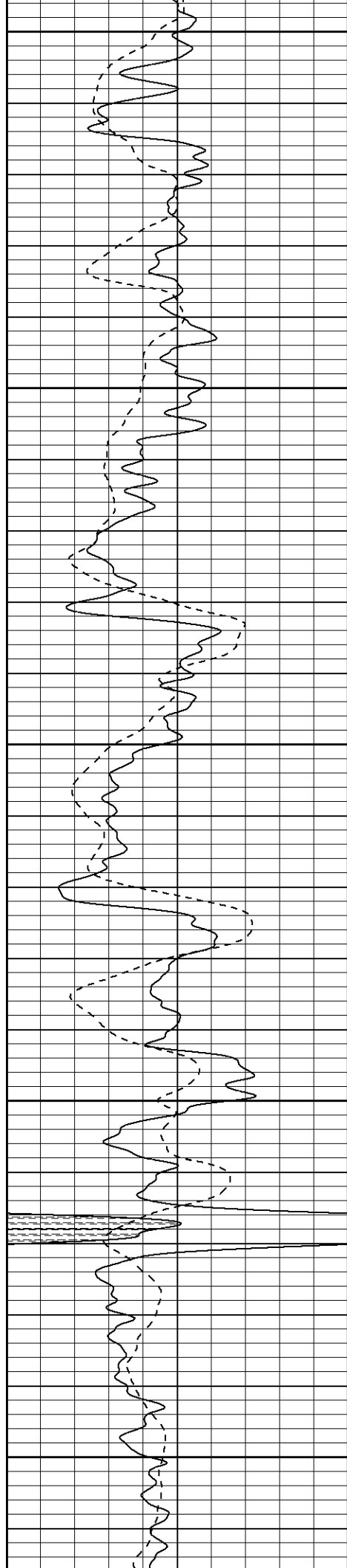
1400

1450

1500

1550





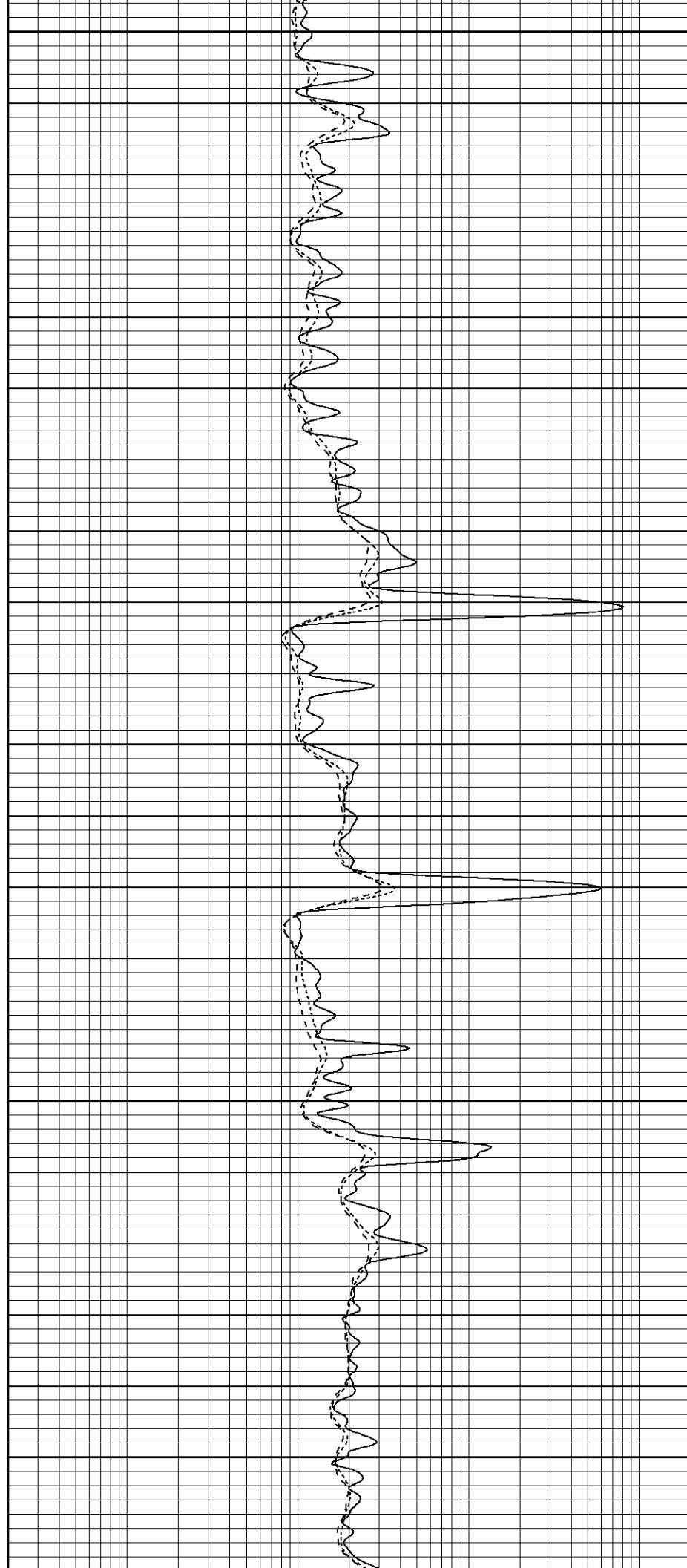
1600

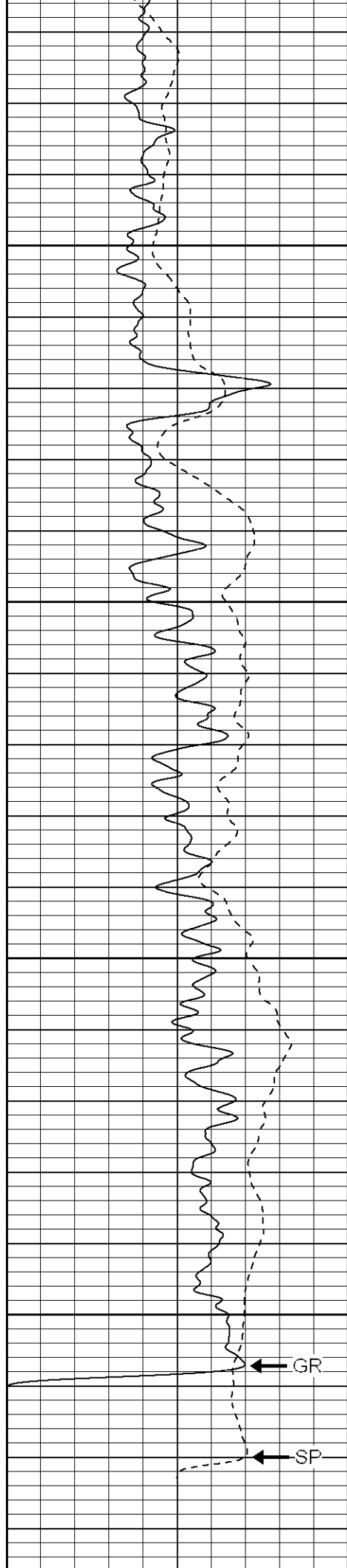
1650

1700

1750

1800



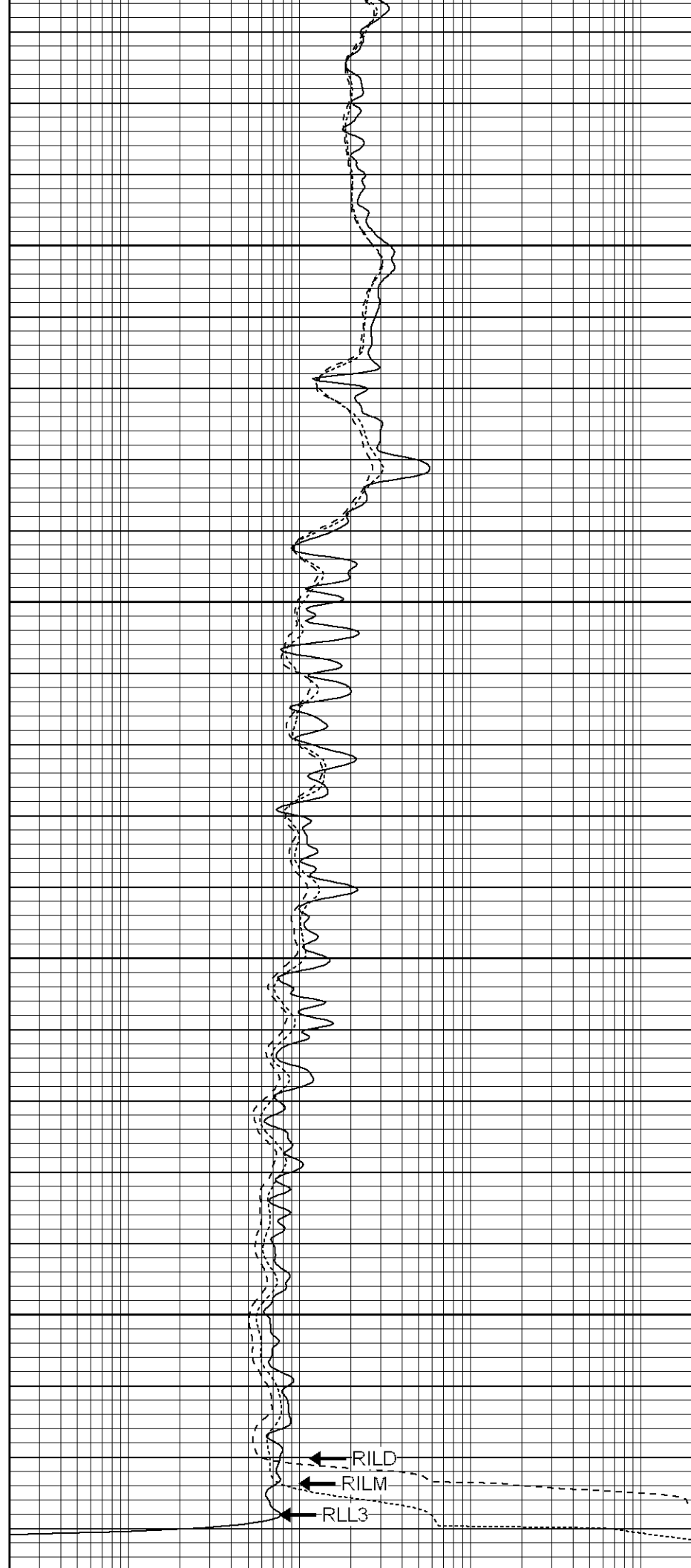


1850

1900

1950

2000



0	GR (GAPI)	200	0.2	RILM (Ohm-m)	2000
-100	SP (mV)	100	0.2	RILD (Ohm-m)	2000
			0.2	RLL3 (Ohm-m)	2000



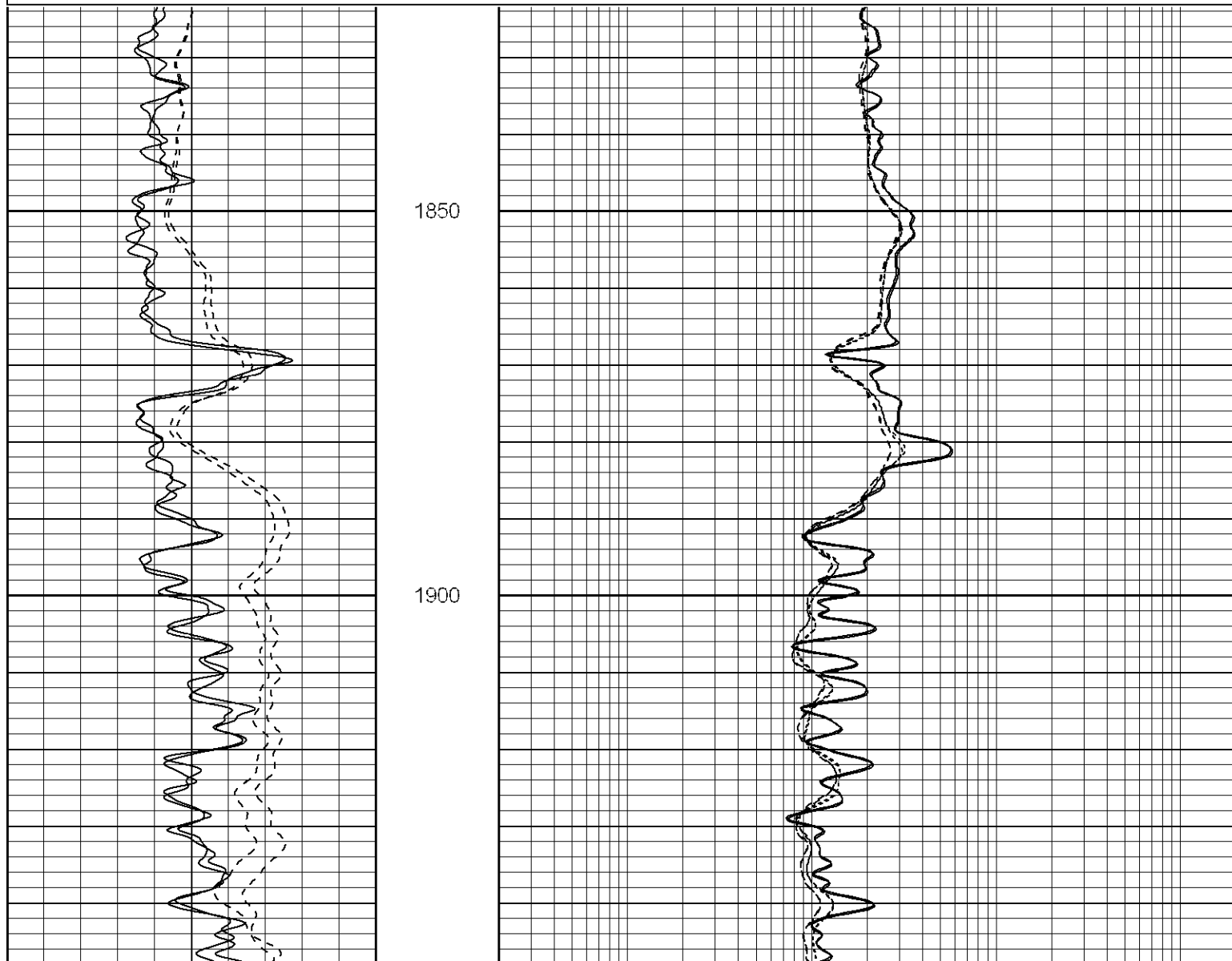
SUPERIOR

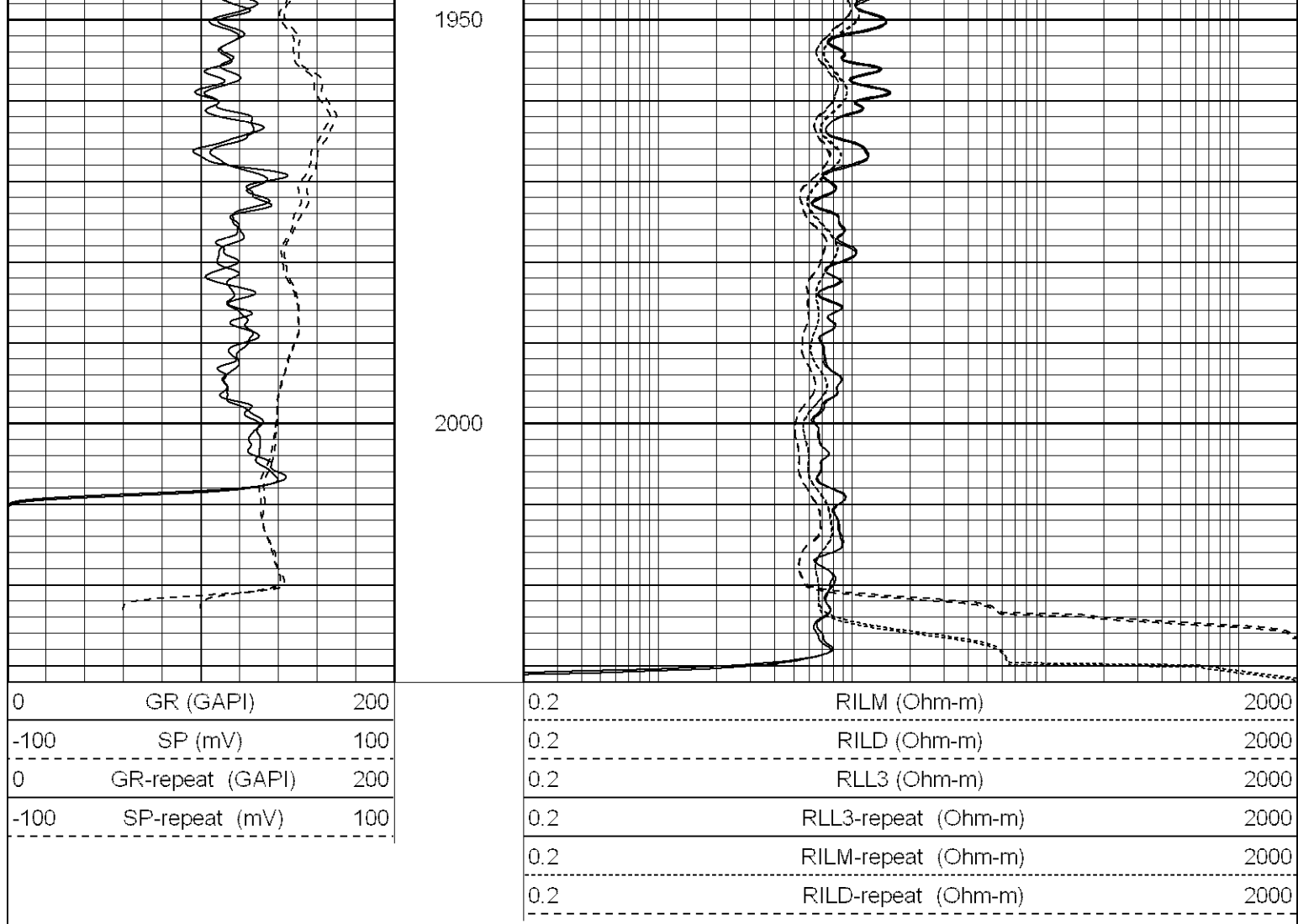
Black Lick, Pa.
Mercer, Pa.
Wooster, Oh.
Cleveland, Ok.
Trinidad, Co.

Repeat Section

Database File: xtoge3202.db
Dataset Pathname: pass1.1
Presentation Format: dil
Dataset Creation: Mon Mar 19 22:38:44 2007 by Calc Open-Cased 061129
Charted by: Depth in Feet scaled 1:240

0	GR (GAPI)	200	0.2	RILM (Ohm-m)	2000
-100	SP (mV)	100	0.2	RILD (Ohm-m)	2000
0	GR-repeat (GAPI)	200	0.2	RLL3 (Ohm-m)	2000
-100	SP-repeat (mV)	100	0.2	RLL3-repeat (Ohm-m)	2000
			0.2	RILM-repeat (Ohm-m)	2000
			0.2	RILD-repeat (Ohm-m)	2000

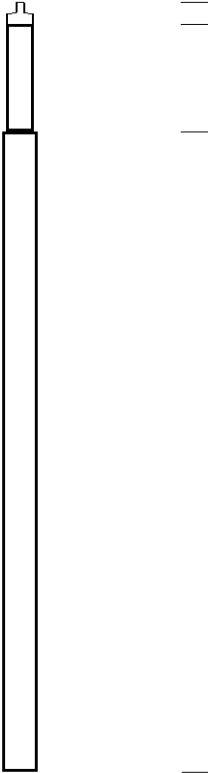
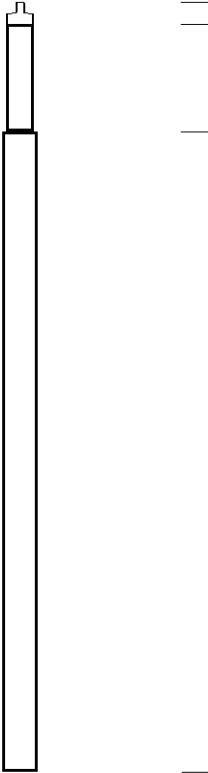
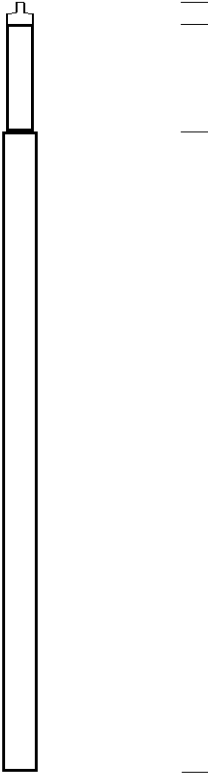
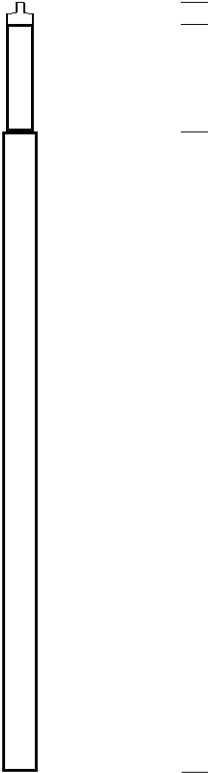




Calibration Report									
Database File:		xtoge3202.db							
Dataset Pathname:		pass2							
Dataset Creation:		Mon Mar 19 20:45:06 2007 by Log Open-Cased 061129							
Dual Induction Calibration Report									
Serial-Model:		5375-G							
Surface Cal Performed:		Fri Jan 19 08:02:09 2007							
Downhole Cal Performed:		Sun Jan 21 14:02:19 2007							
Surface Calibration									
		Readings			References			Results	
Loop:	Air	Loop		Air	Loop		m	b	
Deep	0.001	0.620	V	0.000	500.000	mmho-m	807.659	-1.119	
Medium	0.005	0.743	V	0.000	550.000	mmho-m	744.727	-3.505	
Internal:	Zero	Cal		Zero	Cal		m	b	
Deep	0.001	0.620	V	0.000	500.000	mmho-m	807.698	-1.159	
Medium	0.005	0.743	V	0.000	550.000	mmho-m	744.801	-3.569	
Downhole Calibration									
		Readings			References			Results	
Internal:	Zero	Cal		Zero	Cal		m	b	

Deep	0.123	499.901	mmho-m	0.039	500.015	mmho-m	1.000	-0.084
Medium	0.245	549.982	mmho-m	0.064	550.009	mmho-m	1.000	-0.182
Shallow	2.506	0.009	V	500.000	2.000	Ohm-m	145.000	0.000

Gamma Ray Calibration Report				
Serial Number:	2001			
Tool Model:	OH			
Performed:	Fri Mar 16 09:38:15 2007			
Calibrator Value:	1.0	GAPI		
Background Reading:	0.0	cps		
Calibrator Reading:	1.0	cps		
Sensitivity:	0.2100	GAPI/cps		

Sensor	Offset (ft)	Schematic	Description	Len (ft)	OD (in)	Wt (lb)
GR	22.83		None	0.75	1.50	5.00
			GR-OH (2001) SIE	3.50	3.25	40.00
CILD SP	10.60 10.60		DIL-G (5375) Gearhart	20.83	4.00	345.00
CILM	6.89					
RLL3	1.70					
Dataset:			xtoge3202.db: field/well/run1/pass2			
Total Length:			25.08 ft			
Total Weight:			390.00 lb			
O.D.			4.00 in			