

CEMENT BOND
GAMMA RAY
LOG

Company XTO Energy Inc.

Well Golden Eagle 32-02

Field Purgatorie River

County Las Animas State CO

Location: API #: 05 071 109113 00

API #: 05 071 109113 00

1377-FNL & 1906-FEL

SEC 32 TWP 33S RGE 67W

Permanent Datum	Ground Level	Elevation	7392'	K.B. -----
Log Measured From	Ground Level			D.F. -----
Drilling Measured From	Ground Level			G.L. 7392'

Elevation
K.B. _____
D.F. _____
G.L. 7392'

Company	XTO Energy Inc.
Well	Golden Eagle 32-02
Field	Purgatorie River
County	Las Animas
State	CO

Date	4-26-06
------	---------

Run Number	One
------------	-----

Depth Logger	1976
--------------	------

Bottom Logged Interval	1974'
------------------------	-------

Open Hole Size	77/8"
----------------	-------

Type Fluid	Water
------------	-------

Max. Recorded Temp.	///
---------------------	-----

Estimated Cement Top	

Time Logger on Bottom 10:15 PM

Equipment Number	T701
------------------	------

| Location | Trinidad |

Recorded By	Jennifer All
-------------	--------------

Witnessed By	Mr. Mike Po
--------------	-------------

Borehole Record

Run Number	Bit	F1011	10
------------	-----	-------	----

[illegible]

Increasing Record	Size	W
-------------------	------	---

Surface String	8 5/8"	
----------------	--------	--

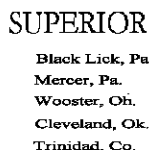
rot. string	1	2	3
0	0	0	0
1	0	0	0
2	0	0	0
3	0	0	0
4	0	0	0
5	0	0	0
6	0	0	0
7	0	0	0
8	0	0	0
9	0	0	0
10	0	0	0
11	0	0	0
12	0	0	0
13	0	0	0
14	0	0	0
15	0	0	0
16	0	0	0
17	0	0	0
18	0	0	0
19	0	0	0
20	0	0	0
21	0	0	0
22	0	0	0
23	0	0	0
24	0	0	0
25	0	0	0
26	0	0	0
27	0	0	0
28	0	0	0
29	0	0	0
30	0	0	0
31	0	0	0
32	0	0	0
33	0	0	0
34	0	0	0
35	0	0	0
36	0	0	0
37	0	0	0
38	0	0	0
39	0	0	0
40	0	0	0
41	0	0	0
42	0	0	0
43	0	0	0
44	0	0	0
45	0	0	0
46	0	0	0
47	0	0	0
48	0	0	0
49	0	0	0
50	0	0	0
51	0	0	0
52	0	0	0
53	0	0	0
54	0	0	0
55	0	0	0
56	0	0	0
57	0	0	0
58	0	0	0
59	0	0	0
60	0	0	0
61	0	0	0
62	0	0	0
63	0	0	0
64	0	0	0
65	0	0	0
66	0	0	0
67	0	0	0
68	0	0	0
69	0	0	0
70	0	0	0
71	0	0	0
72	0	0	0
73	0	0	0
74	0	0	0
75	0	0	0
76	0	0	0
77	0	0	0
78	0	0	0
79	0	0	0
80	0	0	0
81	0	0	0
82	0	0	0
83	0	0	0
84	0	0	0
85	0	0	0
86	0	0	0
87	0	0	0
88	0	0	0
89	0	0	0
90	0	0	0
91	0	0	0
92	0	0	0
93	0	0	0
94	0	0	0
95	0	0	0
96	0	0	0
97	0	0	0
98	0	0	0
99	0	0	0

Reduction stilling	2 1/2	
--------------------	-------	--

[illegible]

Comments

Second Bosque entrance four miles past weston turn left, first left (old railroad tracks)
first right, at Y stay left, at T stay right to location



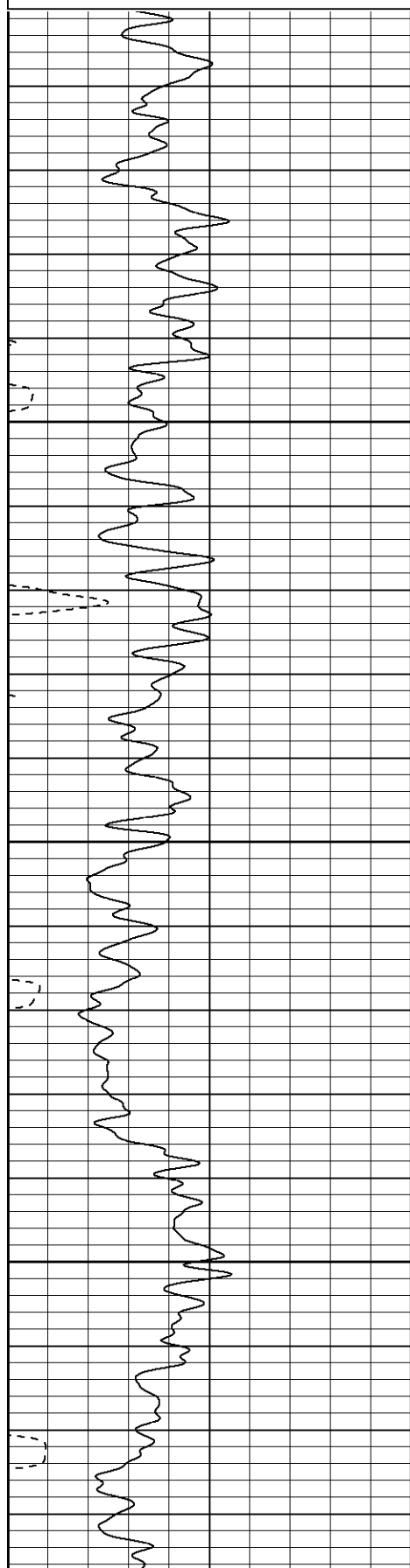
1000 P.S.I.

Database File: xtoge3202042607.db
Dataset Pathname: pass2
Presentation Format: cblrt
Dataset Creation: Thu Apr 26 10:07:47 2007 by Log Open-Cased 061129
Charted by: Depth in Feet scaled 1:240

0	GR (GAPI)	200
400	TT3 (usec)	200

0	AMP3 (mV)	100
18	CCL	-2
100	CBL5	1200

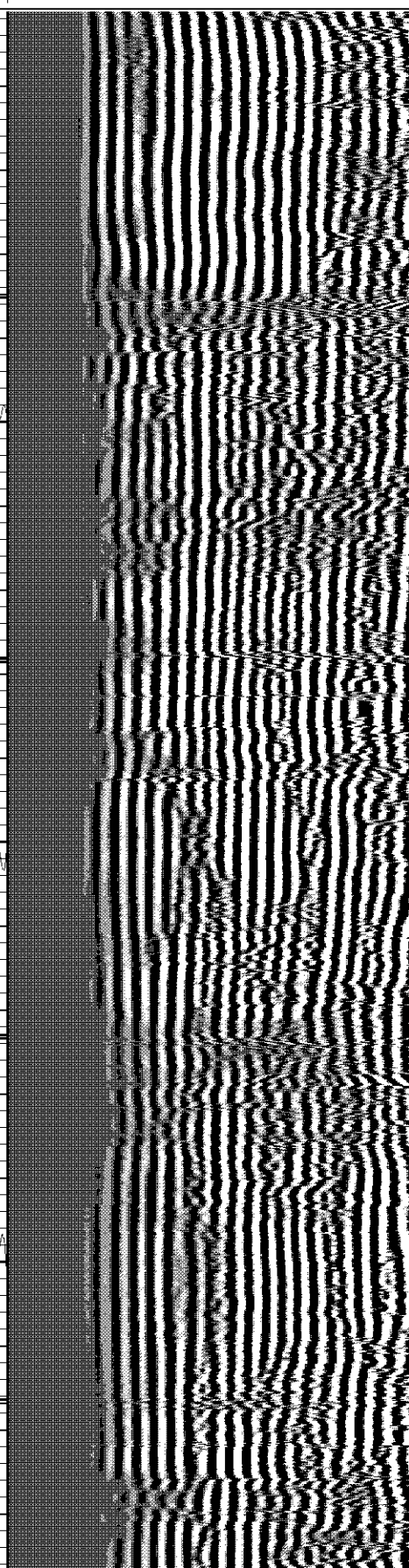
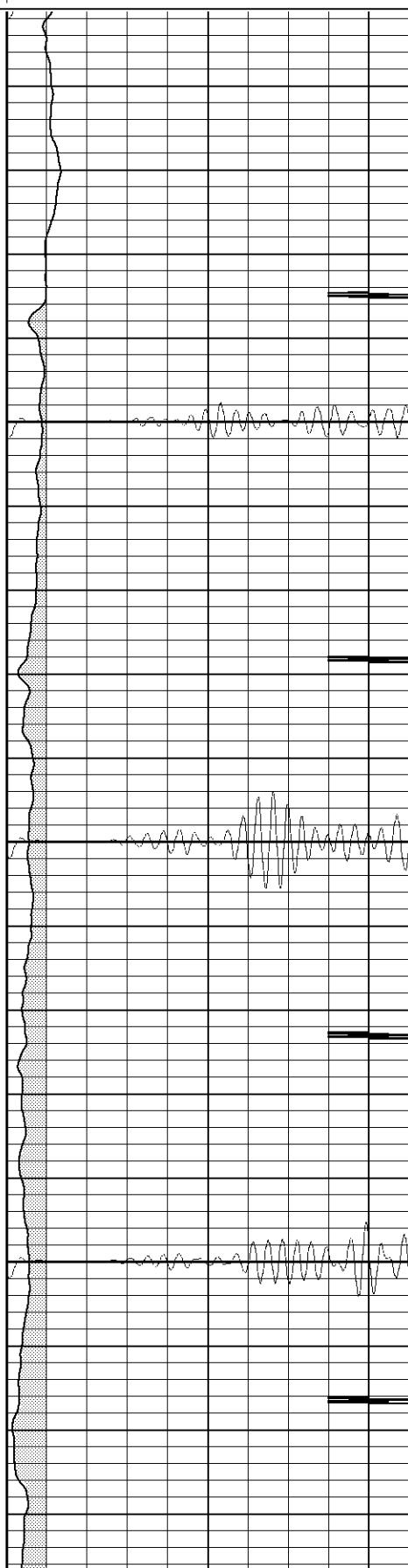
200 Variable Density 1200

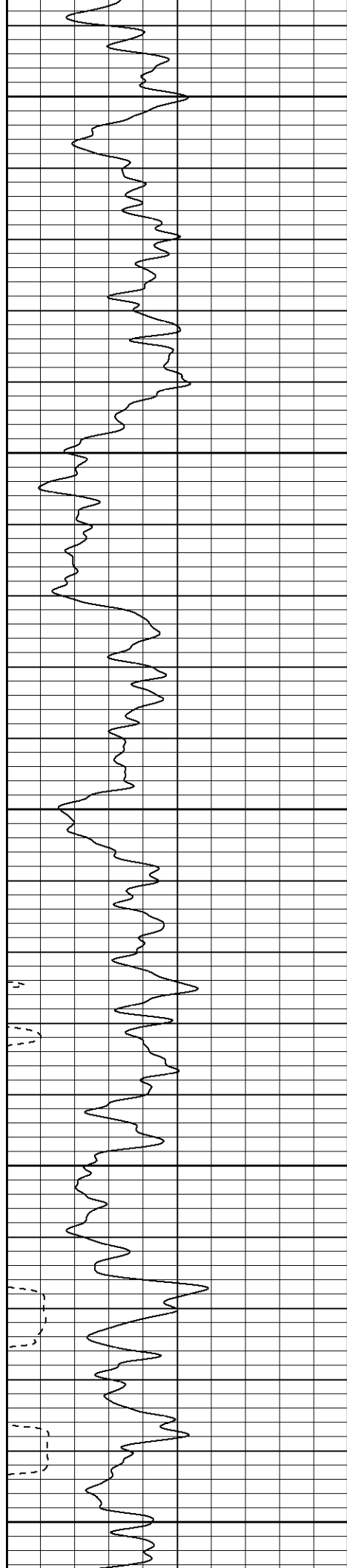


100

150

200





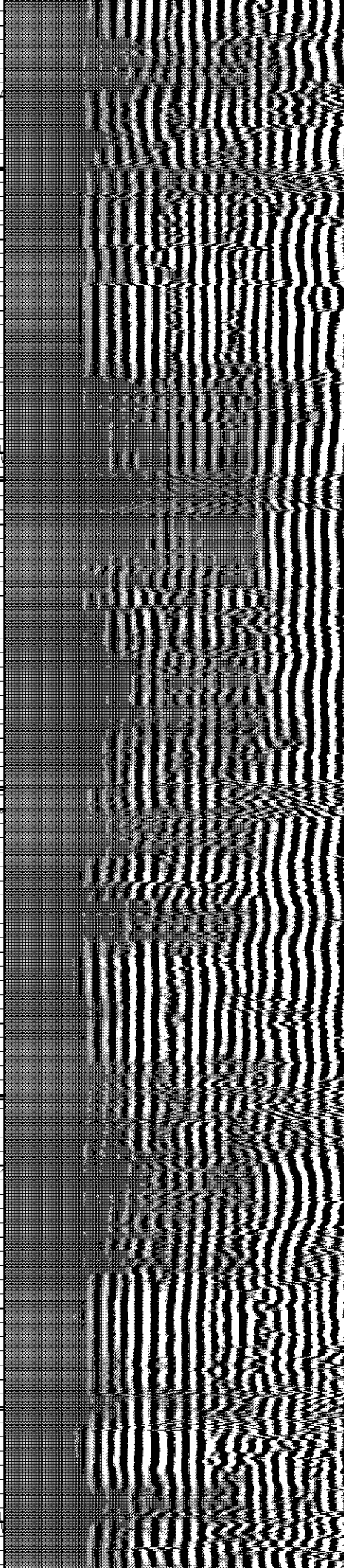
250

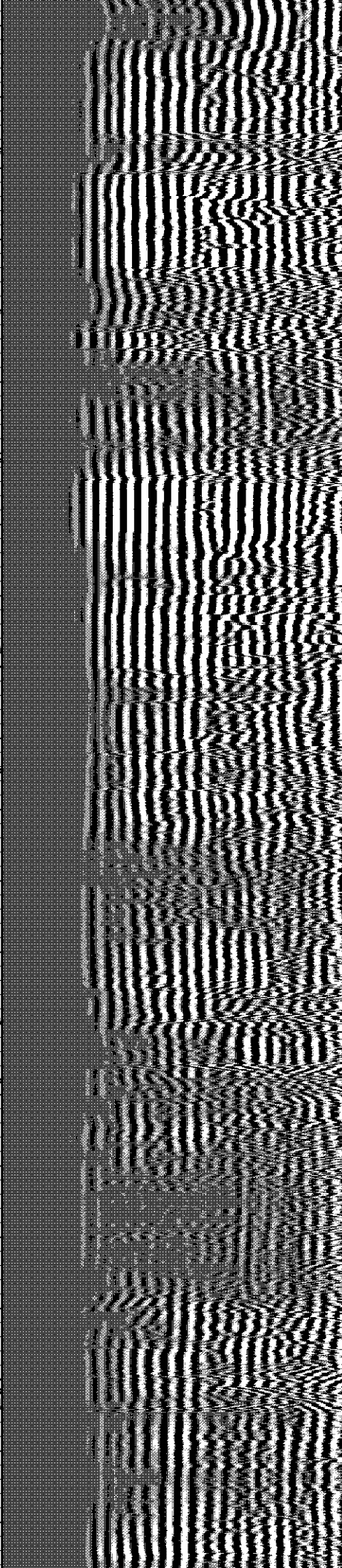
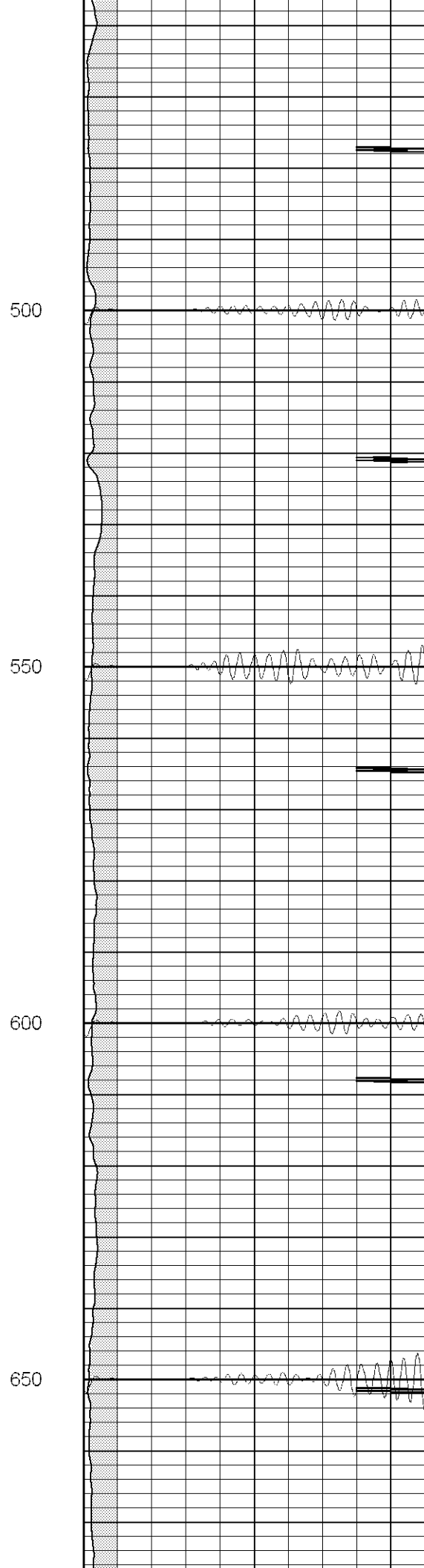
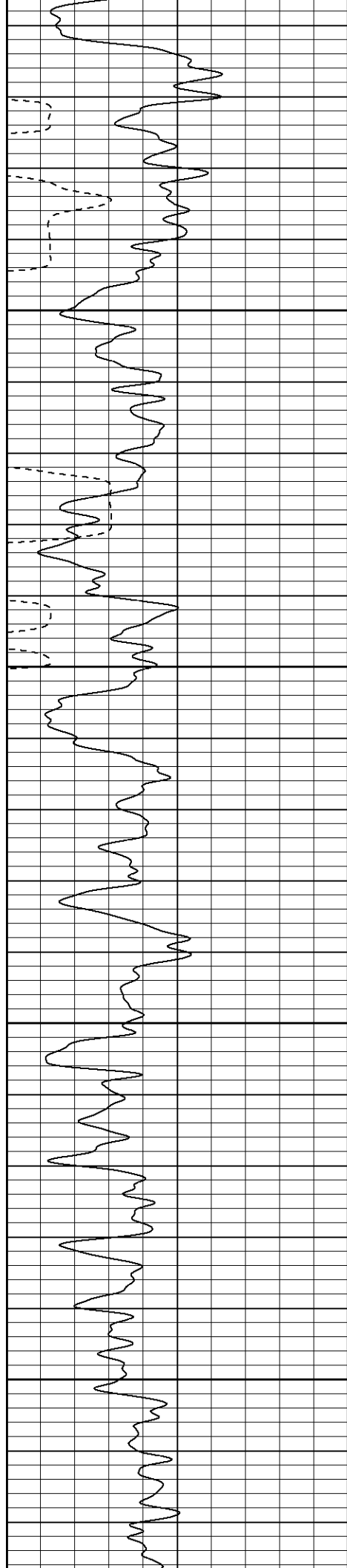
300

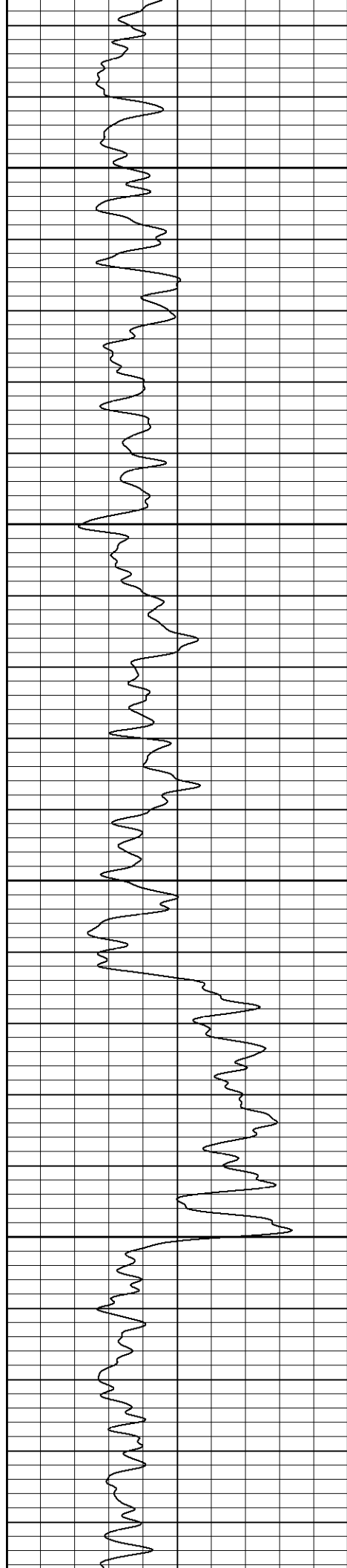
350

400

450





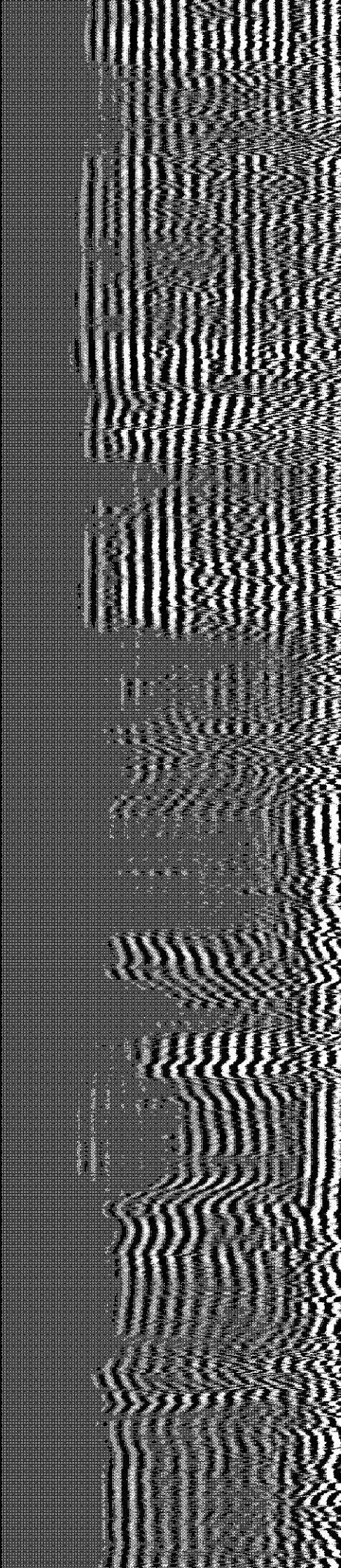
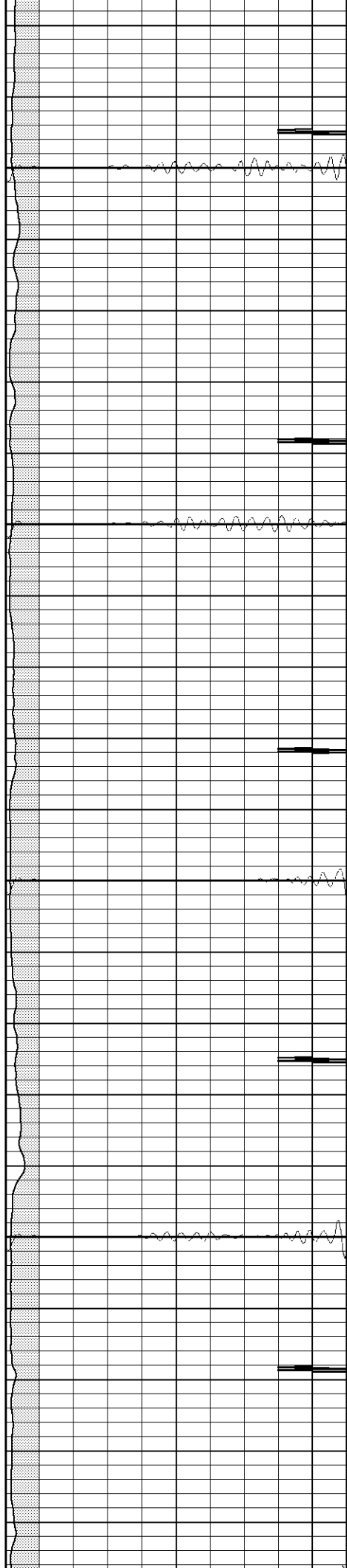


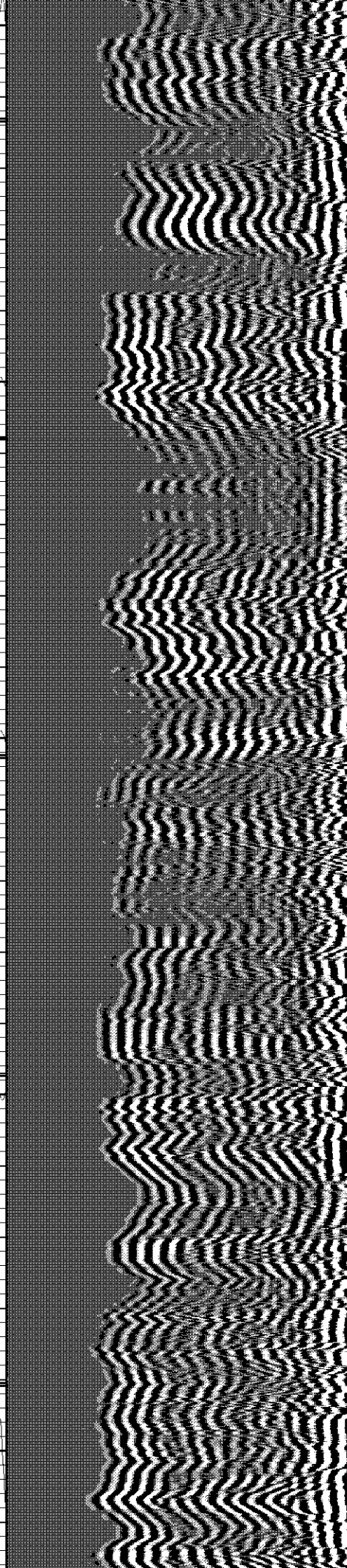
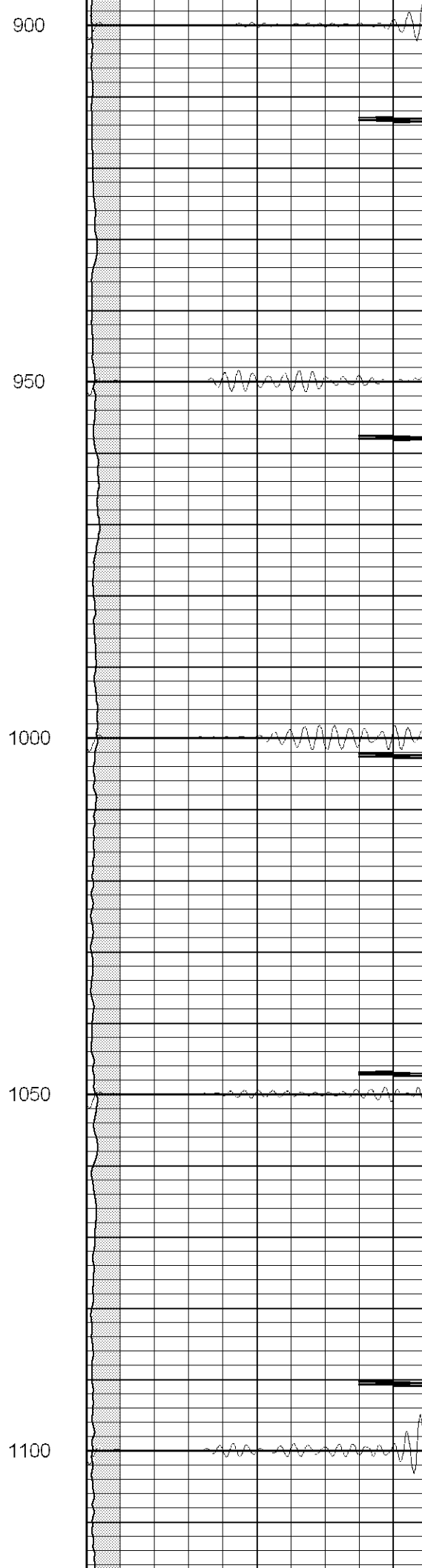
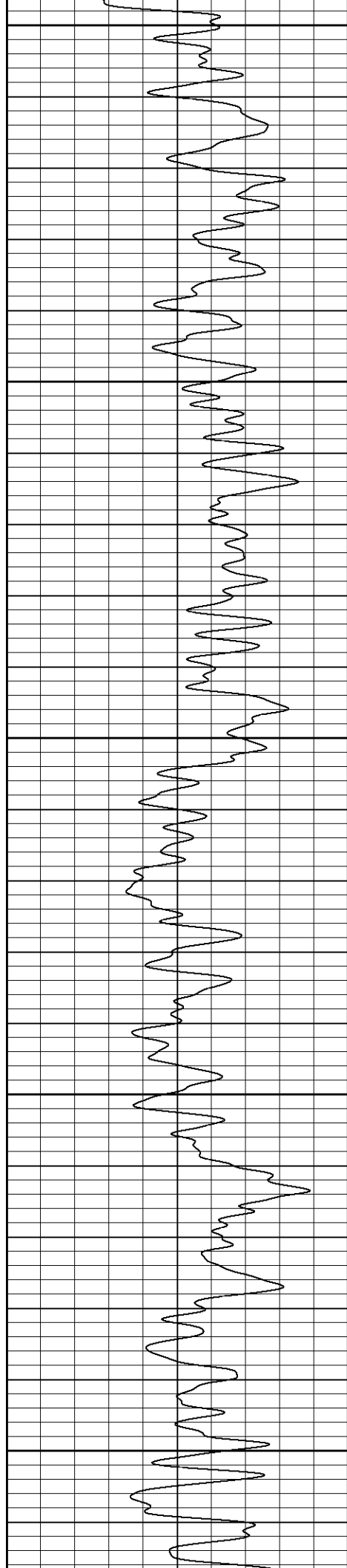
700

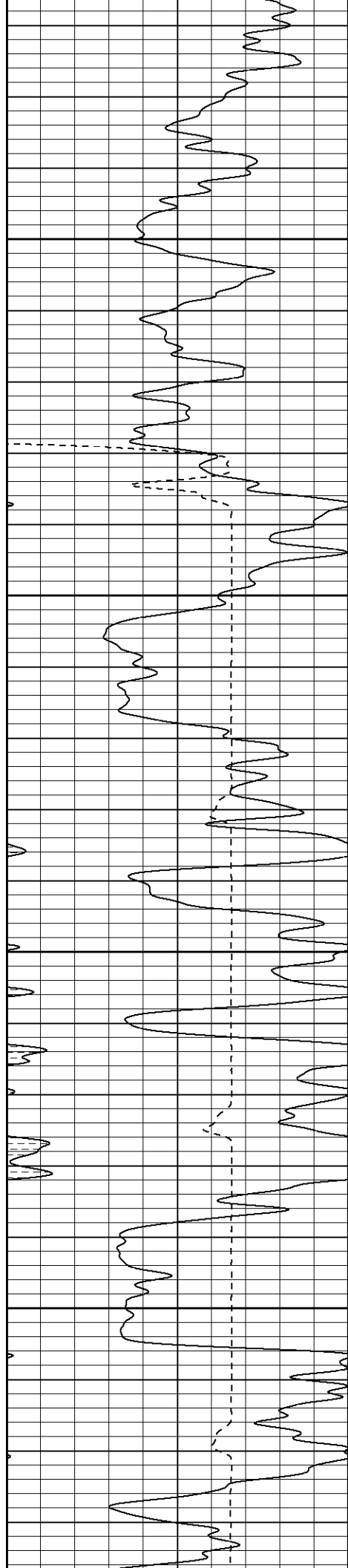
750

800

850





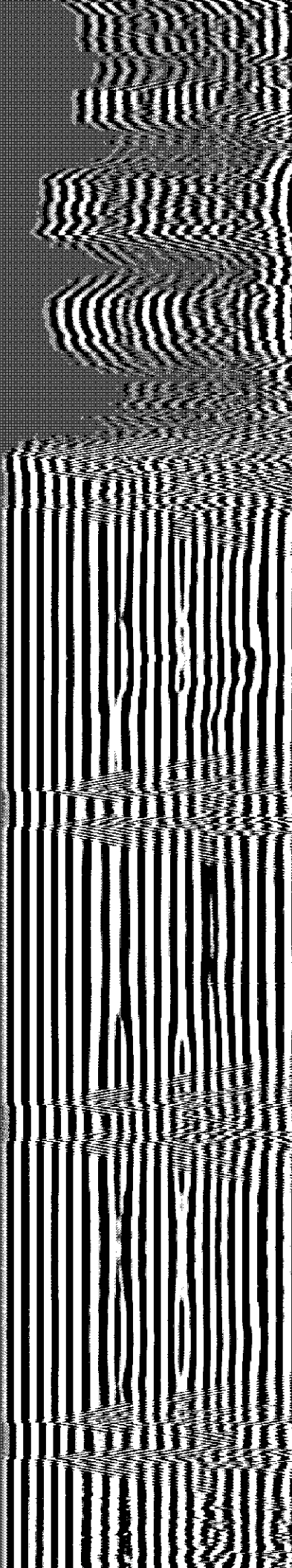
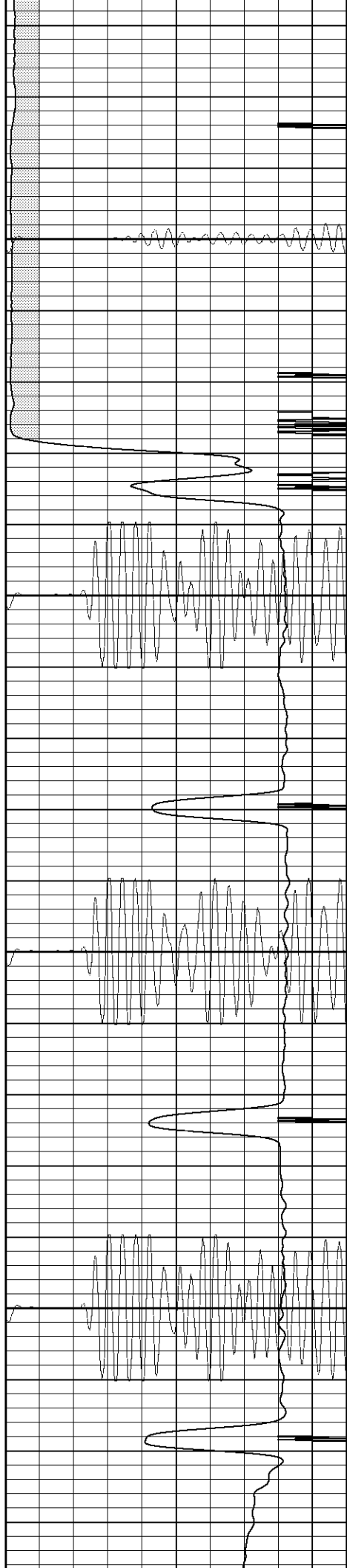


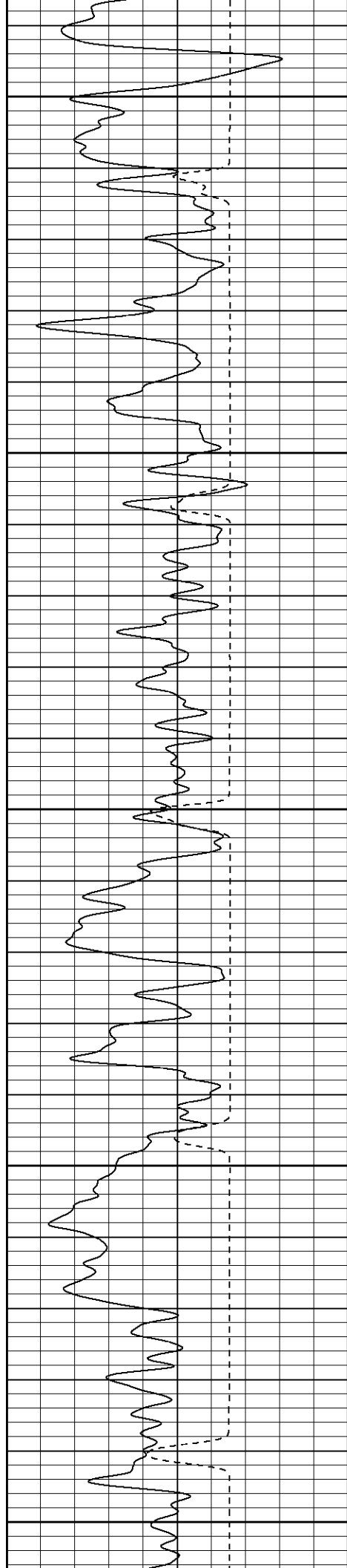
1150

1200

1250

1300





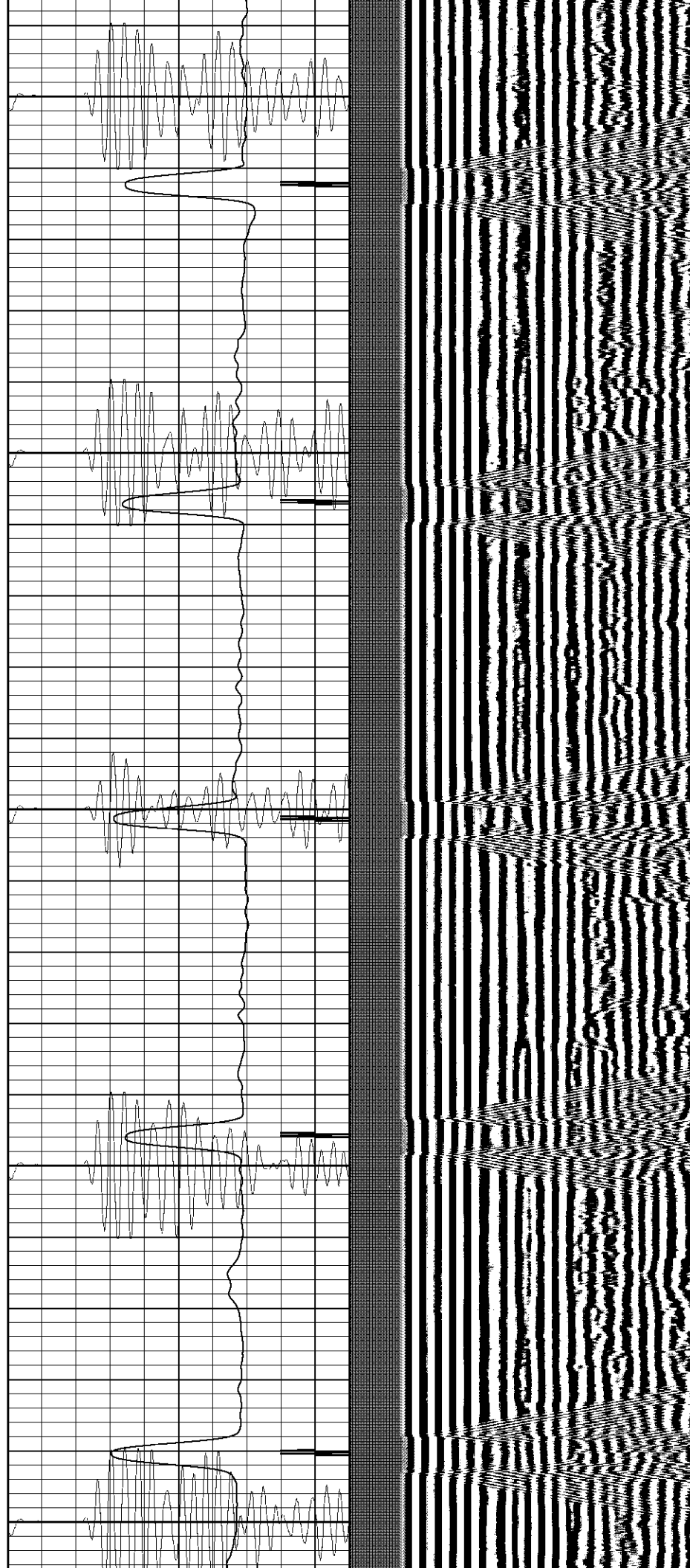
1350

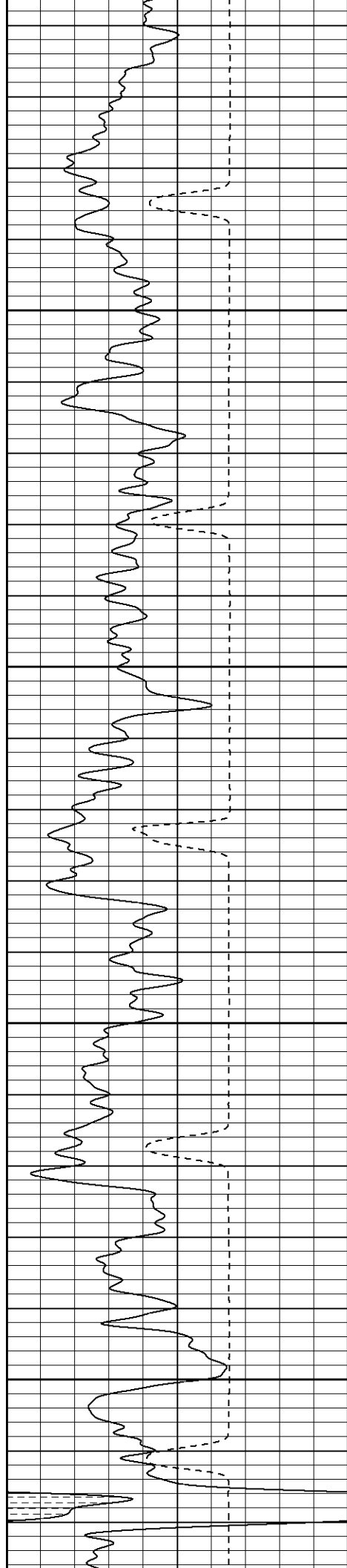
1400

1450

1500

1550



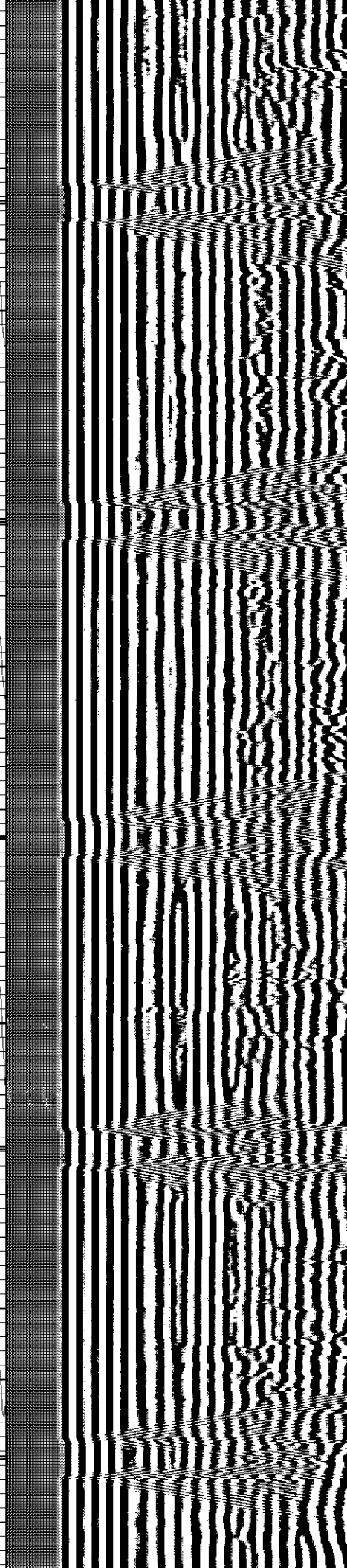
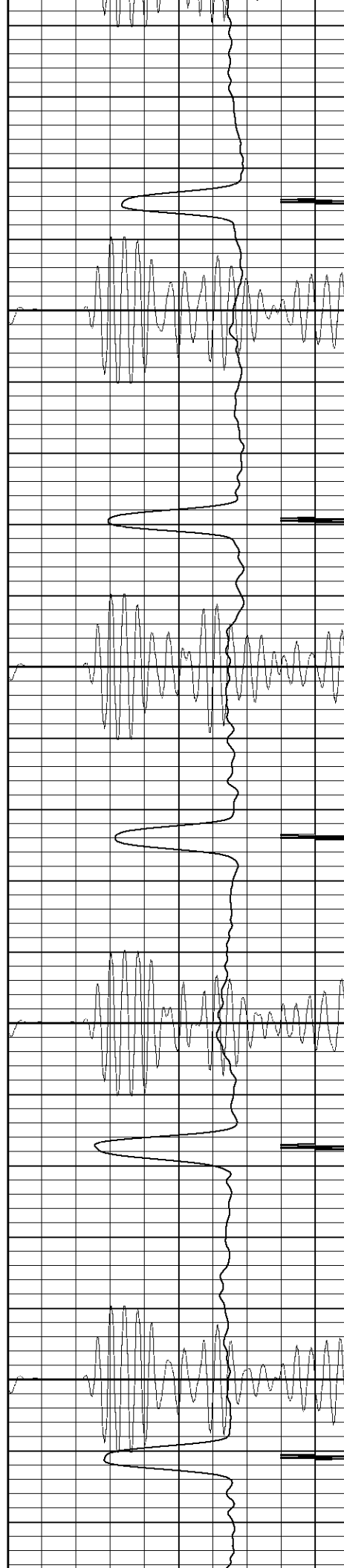


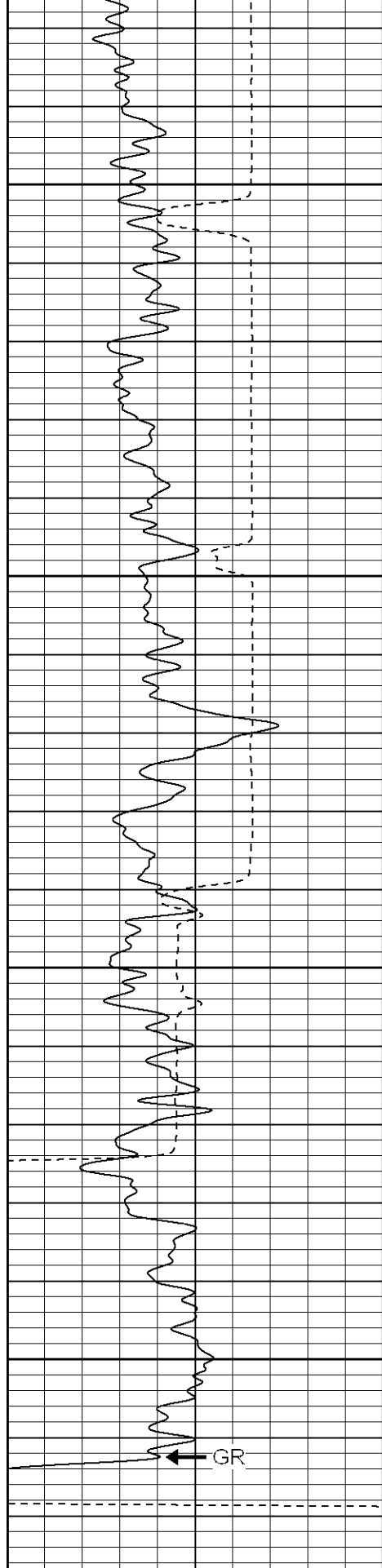
1600

1650

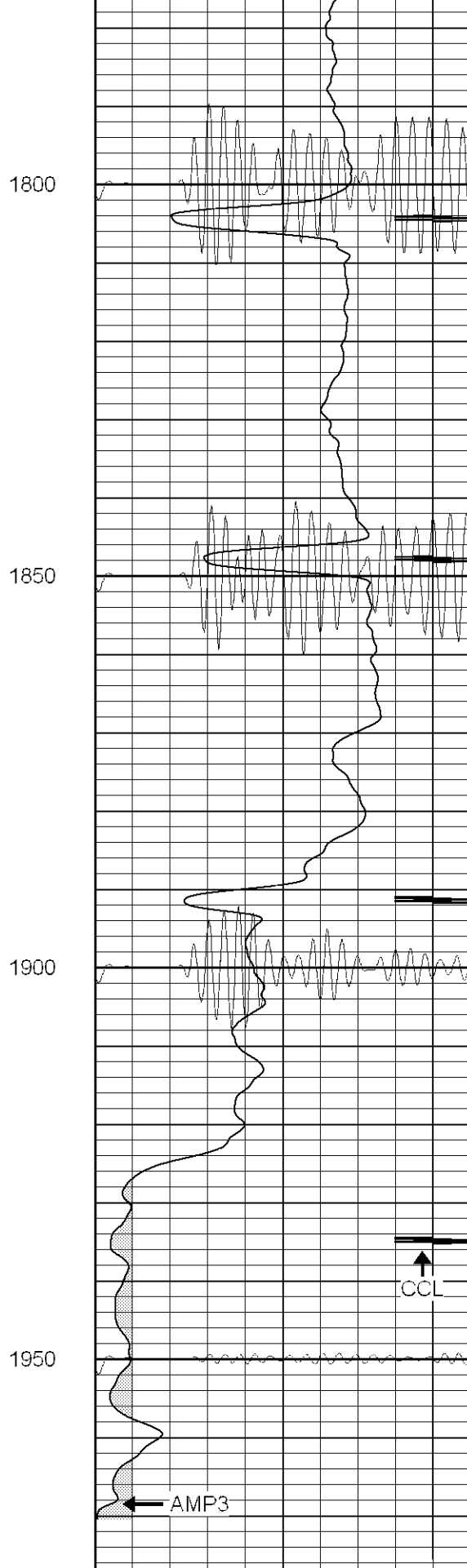
1700

1750

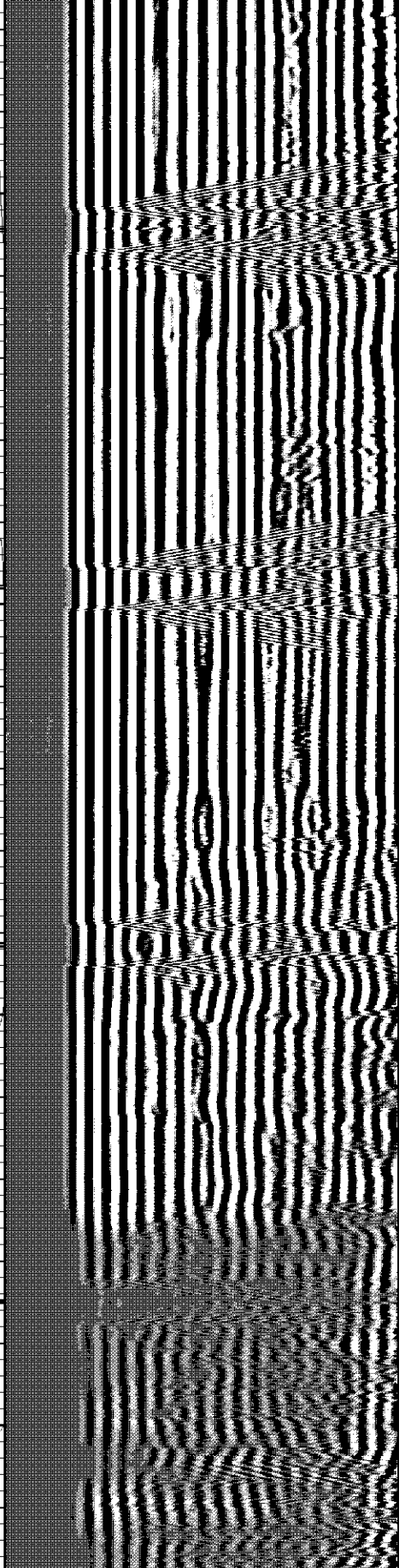




0 GR (GAPI) 200
400 TT3 (usec) 200



0 AMP3 (mV) 100
18 CCL -2
100 CBL5 1200



200 Variable Density 1200



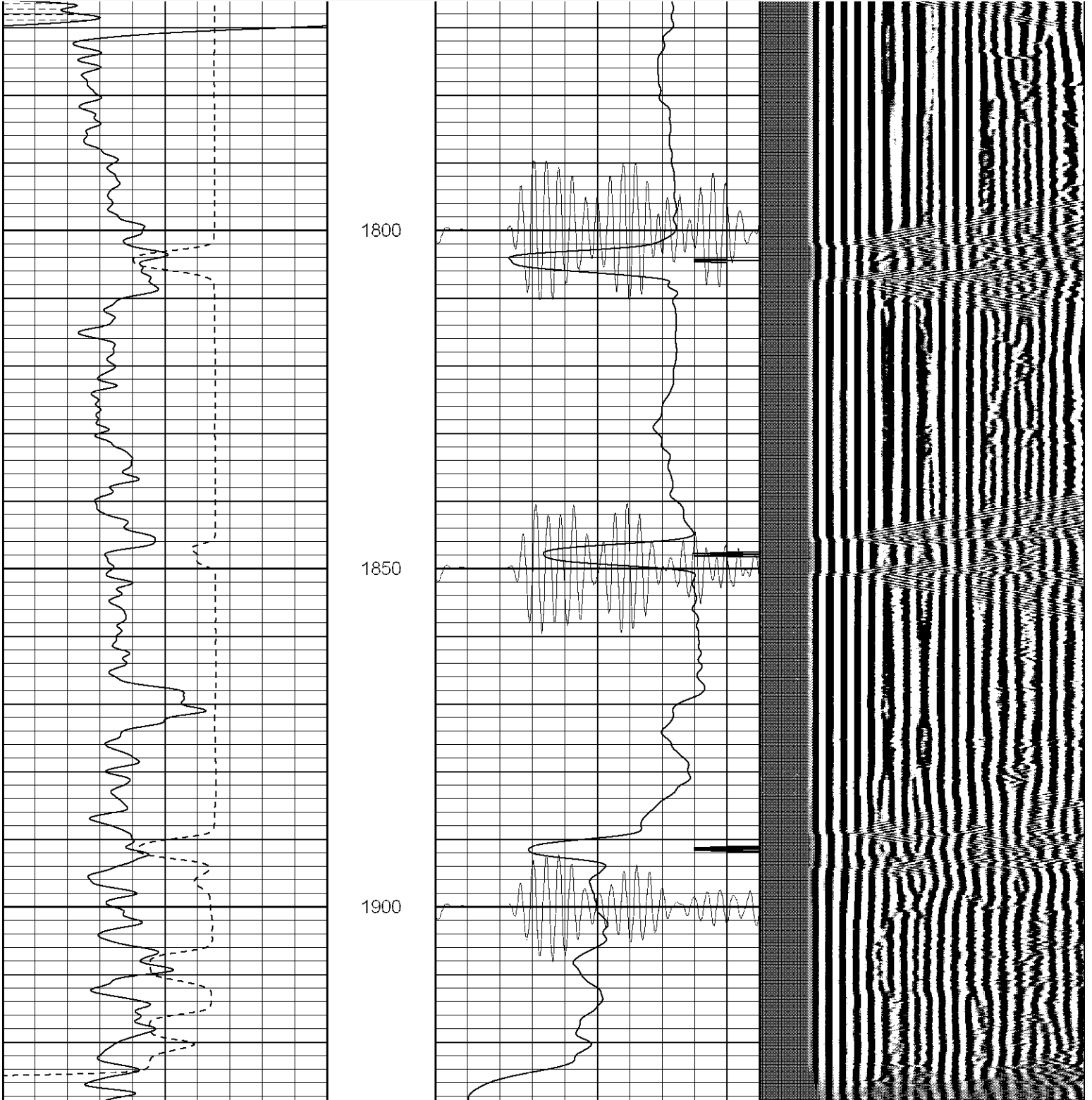
SUPERIOR

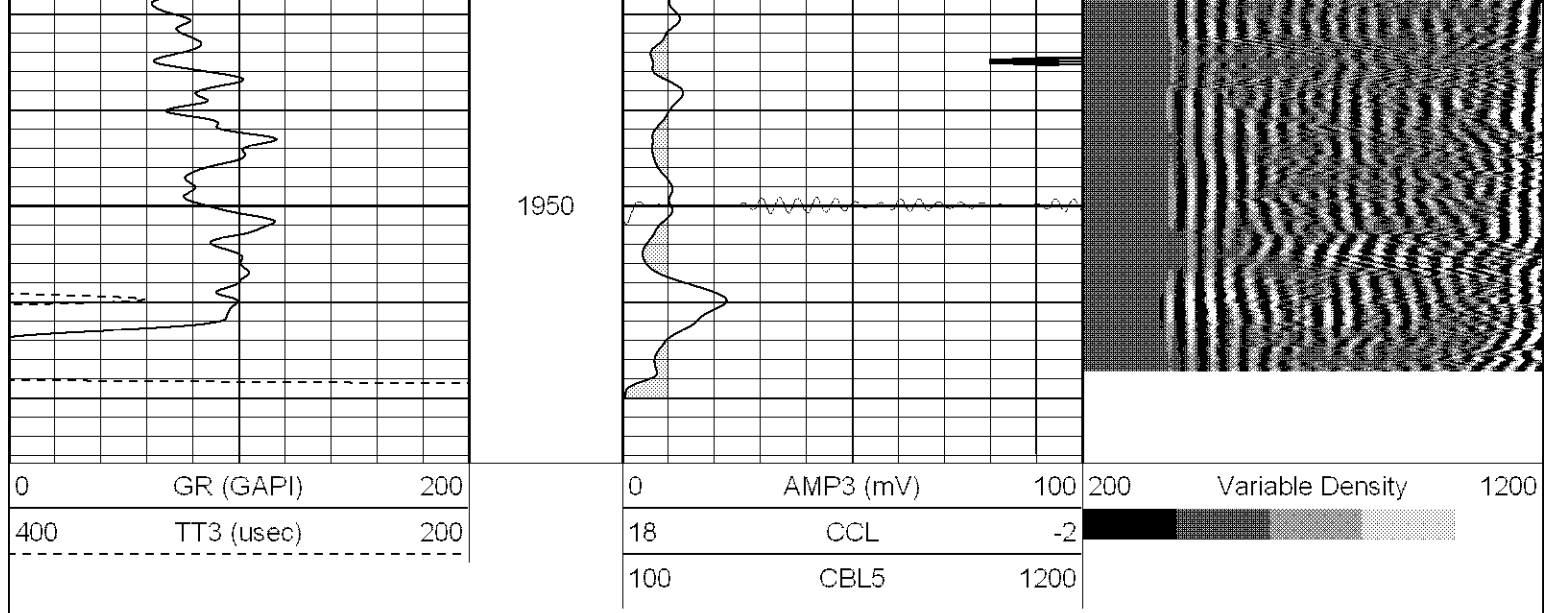
Black Lick, Pa.
Mercer, Pa.
Wooster, Oh.
Cleveland, Ok.
Trinidad, Co.

0 P.S.I.

Database File: xtoge3202042607.db
Dataset Pathname: pass1
Presentation Format: cblrt
Dataset Creation: Thu Apr 26 09:57:52 2007 by Log Open-Cased 061129
Charted by: Depth in Feet scaled 1:240

0	GR (GAPI)	200	0	AMP3 (mV)	100	200	Variable Density	1200
400	TT3 (usec)	200	18	CCL	-2			
-----			100	CBL5	1200			





Calibration Report


Database File: xtoge3202042607.db
 Dataset Pathname: pass2
 Dataset Creation: Thu Apr 26 10:07:47 2007 by Log Open-Cased 061129

Cement Bond Log Calibration Report

Serial Number:	Titan2		
Tool Model:	2		
Performed:	Tue Apr 03 12:22:40 2007		
Depth:	131.206	ft	
Casing Diameter:	5.5	in	
	3' Spacing	5' Spacing	
Signal Zero:	1	1	mV
Calibrated Amplitude:	85	85	mV
Reading at Signal Zero:	0.00546875	0.00556641	V
Reading in Free Pipe:	2.01	1.48699	V
Gain:	41.9051	56.7022	
Offset:	0.770832	0.684372	

Gamma Ray Calibration Report

Serial Number:	TITAN2POINT	
Tool Model:	T2POINT	
Performed:	Mon Apr 02 12:28:07 2007	
Calibrator Value:	240.0	GAPI
Background Reading:	40.0	cps
Calibrator Reading:	200.0	cps
Sensitivity:	1.0500	GAPI/cps

Sensor	Offset (ft)	Schematic	Description	Len (ft)	OD (in)	Wt (lb)
GR	13.64		None	0.75	1.50	5.00
			GR-T2POINT (TITAN2POINT)	2.52	2.44	25.00

