

multi well plan

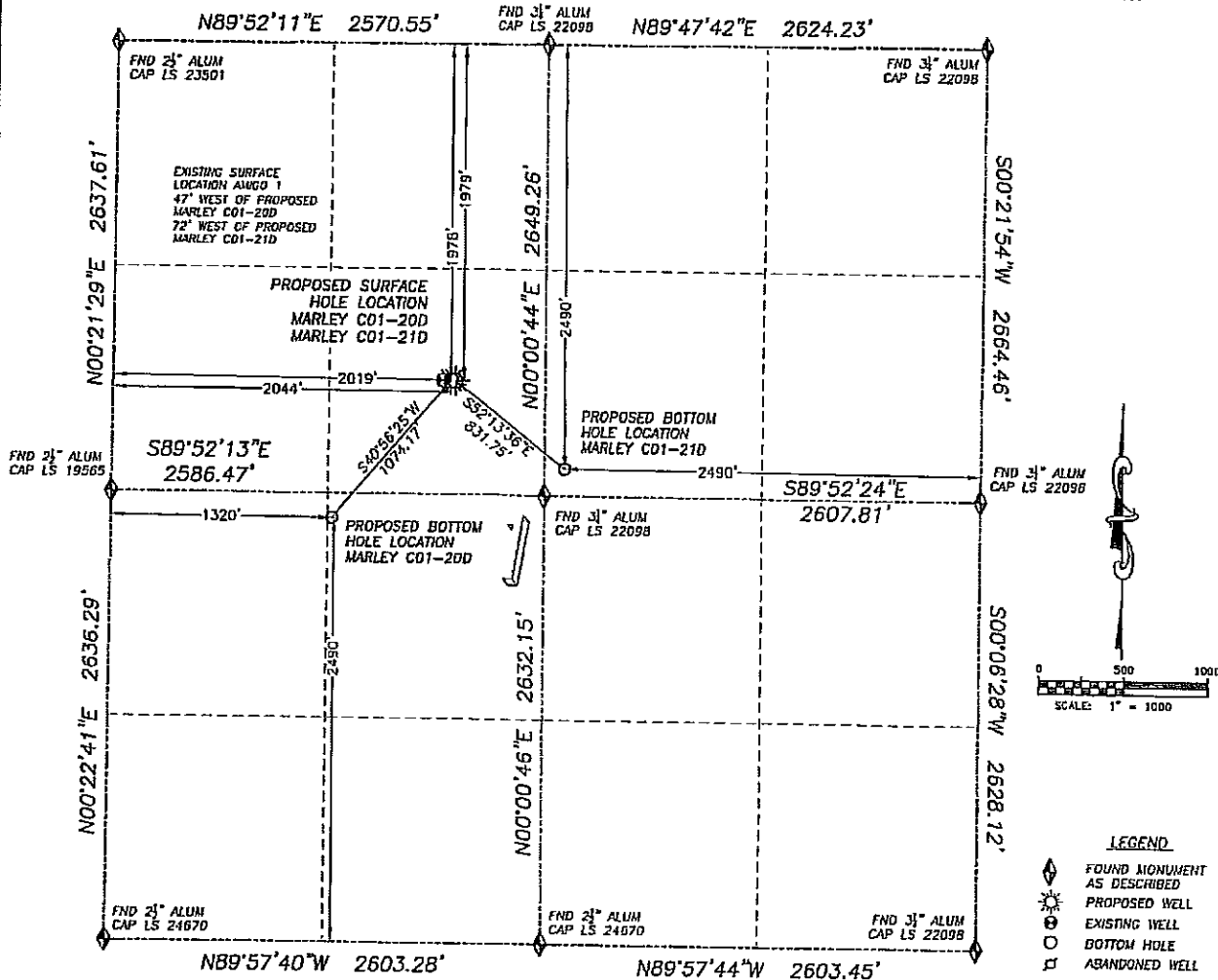
DALEY LAND SURVEYING, INC.

PARKER, CO. 80134

303 953 9841

DIRECTIONAL LAYOUT MARLEY C01-20D & MARLEY C01-21D

SECTION 1, TOWNSHIP 4 NORTH, RANGE 64 WEST OF THE 6TH PRINCIPAL MERIDIAN



NAD 83 LATITUDE AND LONGITUDE

MARLEY C01-20D SURFACE HOLE:

LATITUDE: N40.34323°
LONGITUDE: W104.50094°
ELEVATION: 4607'
PDOP 1.3
1978' FNL, 2019' FWL

BOTTOM HOLE:

LATITUDE: N40.34101°
LONGITUDE: W104.50346°
2490' FSL, 1320' FWL

NEAREST EXISTING WELL:

AMIGO 2 SURFACE HOLE
LATITUDE: N40.34324°
LONGITUDE: W104.50110°
ELEVATION: 4606'
47' WEST

NAD 83 LATITUDE AND LONGITUDE

MARLEY C01-21D SURFACE HOLE:

LATITUDE: N40.34323°
LONGITUDE: W104.50085°
ELEVATION: 4606'
PDOP 1.9
1979' FNL, 2044' FWL

BOTTOM HOLE:

LATITUDE: N40.34183°
LONGITUDE: W104.49849°
2490' FNL, 2490' FEL

NEAREST EXISTING WELL:

AMIGO 2 SURFACE HOLE
LATITUDE: N40.34324°
LONGITUDE: W104.50110°
ELEVATION: 4606'
72' WEST