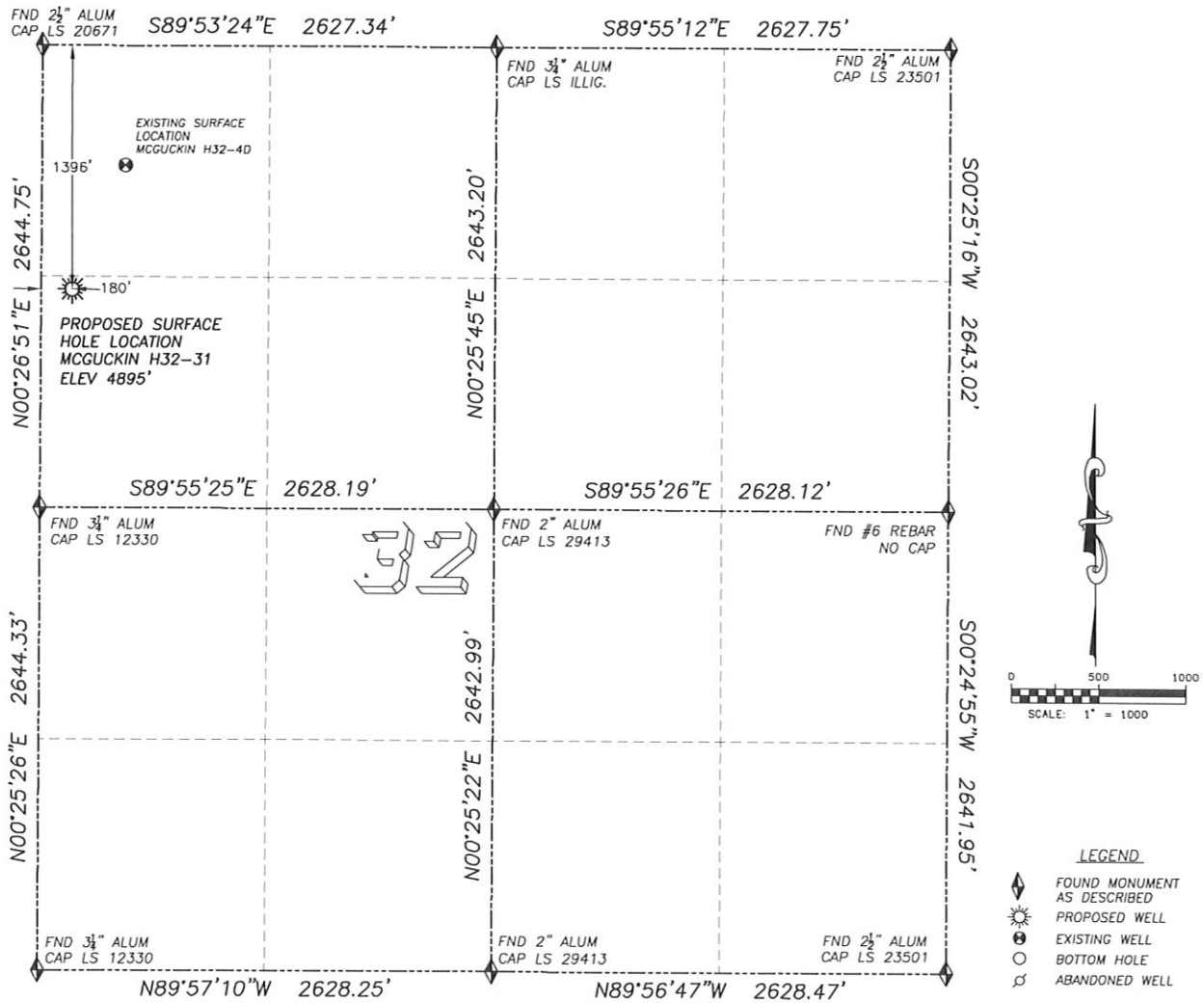


# WELL LOCATION CERTIFICATE

## MCGUCKIN H32-31

SECTION 32, TOWNSHIP 3 NORTH, RANGE 65 WEST OF THE 6TH PRINCIPAL MERIDIAN



**NAD 83 LATITUDE AND LONGITUDE**

**MCGUCKIN H32-31 SURFACE HOLE:**  
 LATITUDE: N40.18536°  
 LONGITUDE: W104.69611°  
 ELEVATION: 4895'  
 PDOP: 1.9  
 1396' FNL, 180' FWL

**NEAREST EXISTING WELL:**

MCGUCKIN H32-4D  
 LATITUDE: N40.18731°  
 LONGITUDE: W104.69501°  
 ELEVATION: 4894'  
 775' NORTHEAST

QUARTER/QUARTER: SW4/NW4

NEAREST APPARENT PROPERTY LINE:  
 180'± WEST

IN ACCORDANCE WITH A REQUEST FROM MATT CAMPBELL OF NOBLE ENERGY INC., DALEY LAND SURVEYING, INC. HAS DETERMINED THE SURFACE LOCATION OF THE MCGUCKIN H32-31 WELL TO BE 1396' FNL, 180' FWL, AS MEASURED AT NINETY (90) DEGREES FROM THE SECTION LINES OF SECTION 32, TOWNSHIP 3 NORTH, RANGE 65 WEST OF THE 6TH PRINCIPAL MERIDIAN, WELD COUNTY COLORADO.

I HEREBY CERTIFY THAT THIS WELL LOCATION CERTIFICATE WAS PREPARED BY ME OR UNDER MY DIRECT SUPERVISION, THAT THE WORK WAS COMPLETED ON 10/22/2009 FOR AND ON BEHALF OF NOBLE ENERGY, INC., AND THAT THIS MAP DOES NOT REPRESENT A BOUNDARY SURVEY, IT IS NOT A LAND SURVEY PLAT OR AN IMPROVEMENT SURVEY PLAT AND IT IS NOT TO BE RELIED UPON FOR THE ESTABLISHMENT OF FENCE, BUILDING OR OTHER FUTURE IMPROVEMENT LINES.

**NOTES:**

- 1) BASIS OF BEARING FOR THIS MAP IS ASSUMED AND BASED UPON GPS OBSERVATIONS MADE BETWEEN MONUMENTS LOCATED AT THE NORTHWEST AND WEST QUARTER CORNER OF SECTION 32, T.3N., R.65W., AND ALL BEARINGS SHOWN HEREON ARE RELATIVE THERETO.
- 2) HORIZONTAL DATUM IS NAD83.
- 3) VERTICAL DATUM IS NAVD88. ELEVATIONS ARE DERIVED FROM GPS-RTK OBSERVATIONS PROCESSED THROUGH OPUS, UTILIZING THE GEOID03 MODEL.
- 4) SEE VISIBLE IMPROVEMENTS EXHIBIT FOR VISIBLE IMPROVEMENTS WITHIN 400' OF PROPOSED SURFACE HOLE LOCATION
- 5) SURFACE USE: OPEN FIELD

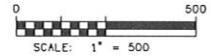
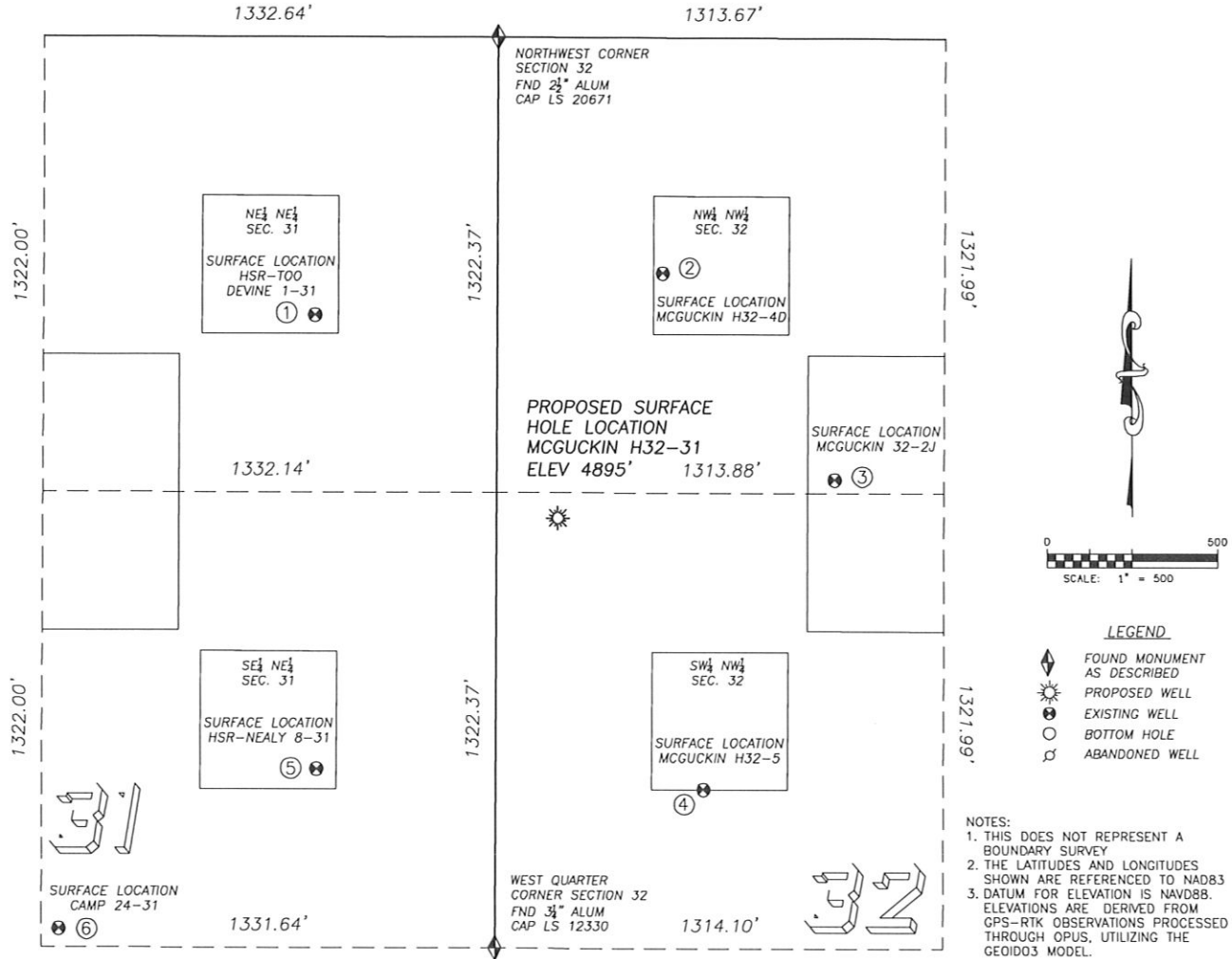
NOTICE: According to Colorado law you MUST commence any legal action based upon any defect in this W.L.C. within three years after you first discover such defect. In no event may any action based upon any such defect in this W.L.C. be commenced more than ten years from the date of the certification shown hereon.



FOR AND ON BEHALF OF  
 DALEY LAND SURVEYING INC.,  
 Robert Daley, PLS 35597

# SITE SKETCH MCGUCKIN H32-31

SECTION 32, TOWNSHIP 3 NORTH, RANGE 65 WEST OF THE 6TH PRINCIPAL MERIDIAN



**LEGEND**

- FOUND MONUMENT AS DESCRIBED
- PROPOSED WELL
- EXISTING WELL
- BOTTOM HOLE
- ABANDONED WELL

**NOTES:**

1. THIS DOES NOT REPRESENT A BOUNDARY SURVEY
2. THE LATITUDES AND LONGITUDES SHOWN ARE REFERENCED TO NAD83
3. DATUM FOR ELEVATION IS NAVD88. ELEVATIONS ARE DERIVED FROM GPS-RTK OBSERVATIONS PROCESSED THROUGH OPUS, UTILIZING THE GEOID03 MODEL.

①  
**HSR TOO DEVINE 1-31**  
NE/NE SEC. 31  
807' FNL, 535' FEL  
923' NW OF PROPOSED SURFACE HOLE LOCATION  
LAT. N40.18697"  
LONG. W104.69865"  
EL: 4911'  
PDOP 1.8

②  
**MCGUCKIN H32-4D**  
NW/NW SEC. 32  
685' FNL, 484' FWL  
775' NE OF PROPOSED SURFACE HOLE LOCATION  
LAT. N40.18731"  
LONG. W104.69501"  
EL: 4894'  
PDOP 1.6

③  
**MCGUCKIN 32-2J**  
NW/NW SEC. 32  
1283' FNL, 993' FWL  
821' EAST OF PROPOSED SURFACE HOLE LOCATION  
LAT. N40.18566"  
LONG. W104.69320"  
EL: 4886'  
PDOP 1.7

④  
**MCGUCKIN H32-5**  
SW/NW SEC. 32  
2183' FNL, 610' FWL  
895' SE OF PROPOSED SURFACE HOLE LOCATION  
LAT. N40.18319"  
LONG. W104.69460"  
EL: 4895'  
PDOP 1.9

⑤  
**HSR-NEALY 8-31**  
SE/NE SEC. 31  
2125' FNL, 525' FEL  
1018' SW OF PROPOSED SURFACE HOLE LOCATION  
LAT. N40.18336"  
LONG. W104.69866"  
EL: 4924'  
PDOP 1.8

⑥  
**CAMP 24-31**  
SE/NE SEC. 31  
2589' FNL, 1280' FEL  
1892' SW OF PROPOSED SURFACE HOLE LOCATION  
LAT. N40.18208"  
LONG. W104.70137"  
EL: 4923'  
PDOP 1.3