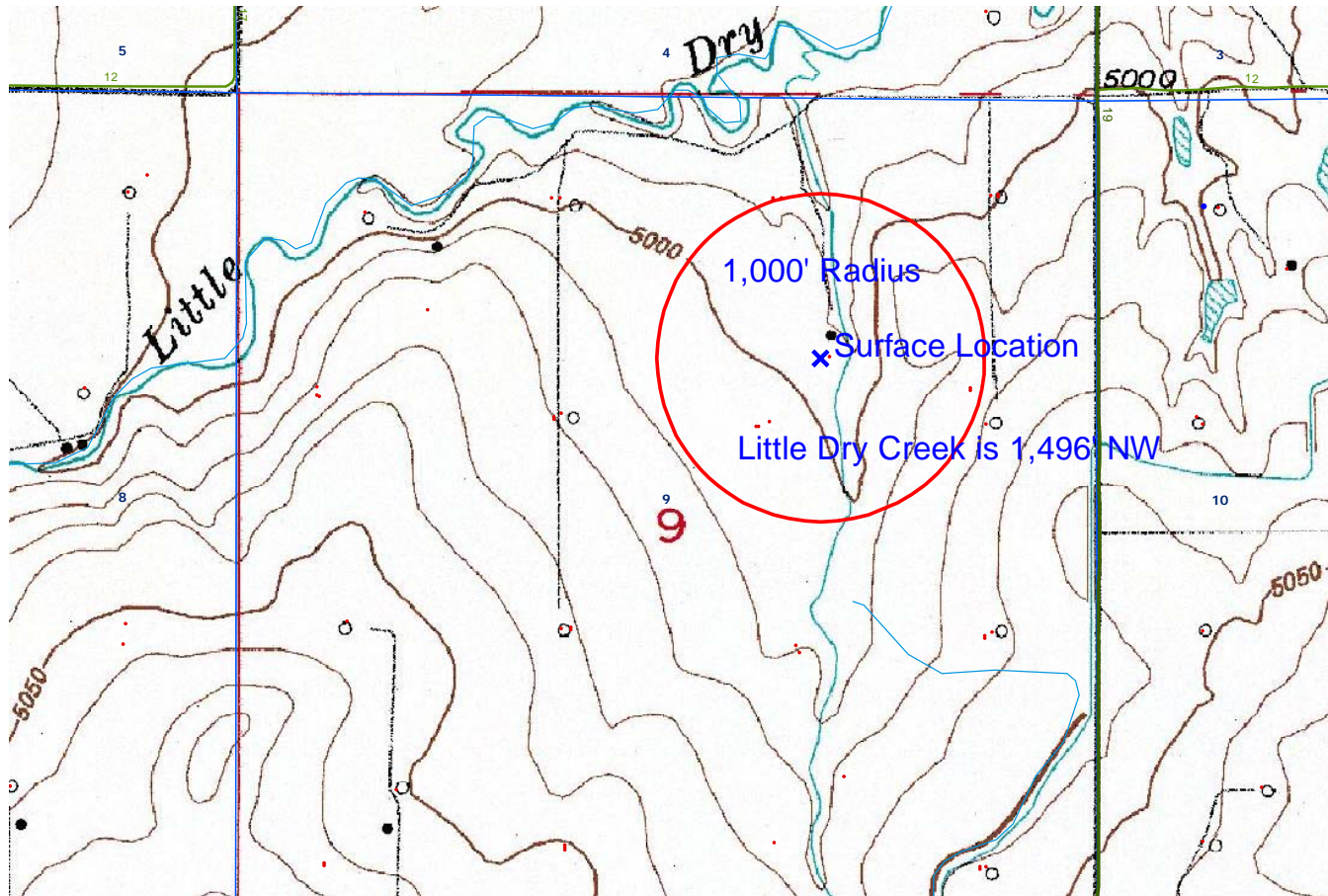


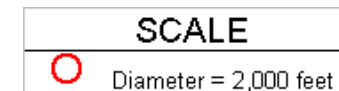
**NRC 1-9**

**TOPO**

**HYDROLOGY MAP-A**



TOWNSHIP 1 NORTH, RANGE 67 WEST



**LEGEND A**

**WATER RESOURCES**

- Water Wells
- Lakes
- Major Rivers
- Streams
- 300-Foot Stream Buffers

**LEGEND B**

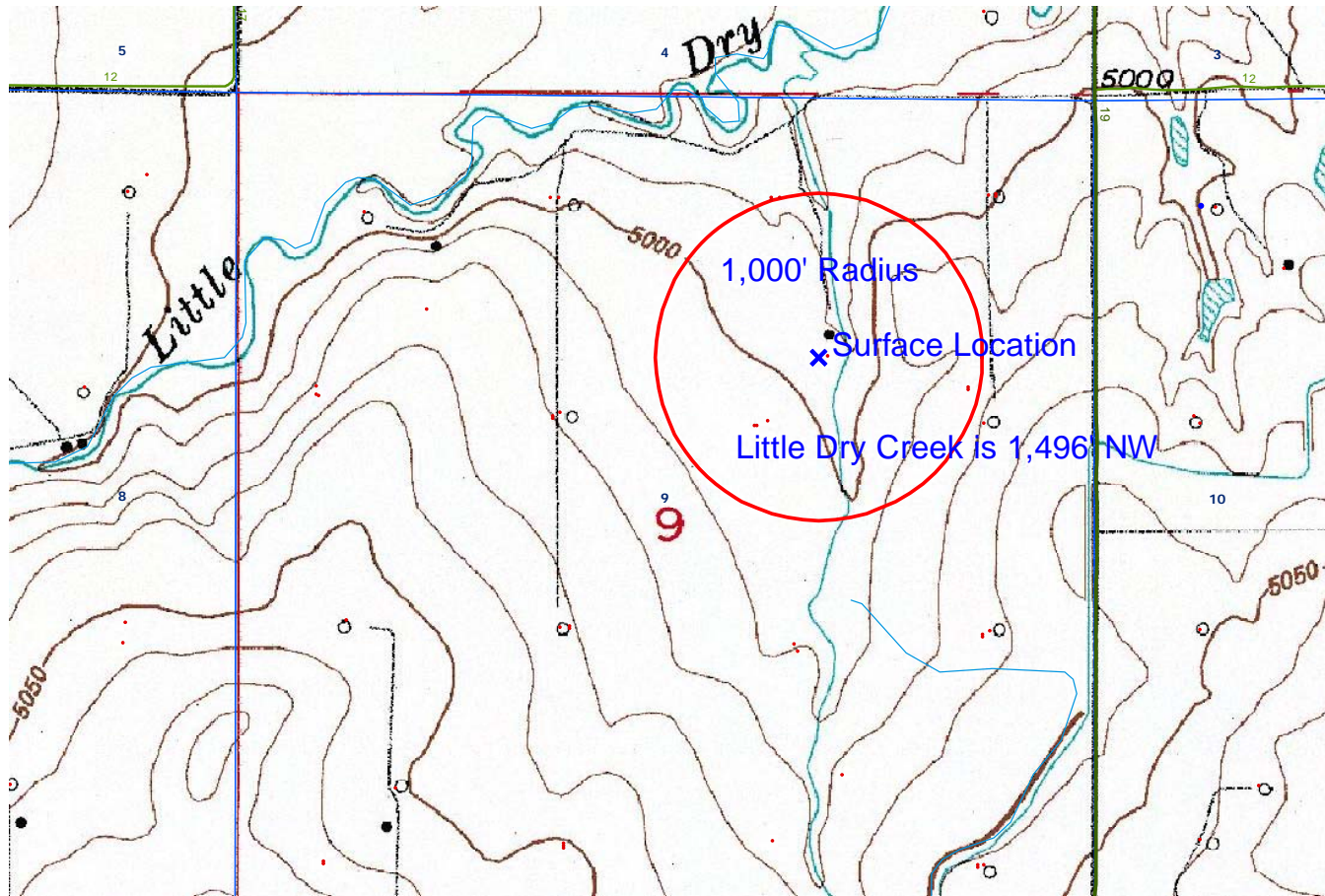
**1200-SEARIES WILDLIFE AREAS**

- RSO Areas
- RSO\_Osprey\_Curren
- SWH Areas
- State Wildlife Areas

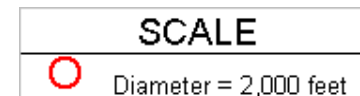
**NRC 1-9**

**TOPO**

**HYDROLOGY MAP-B**



**TOWNSHIP 1 NORTH, RANGE 67 WEST**



LEGEND A
WATER RESOURCES
● Water Wells
□ Lakes
— Major Rivers
— Streams
■ 300-Foot Stream Buffers

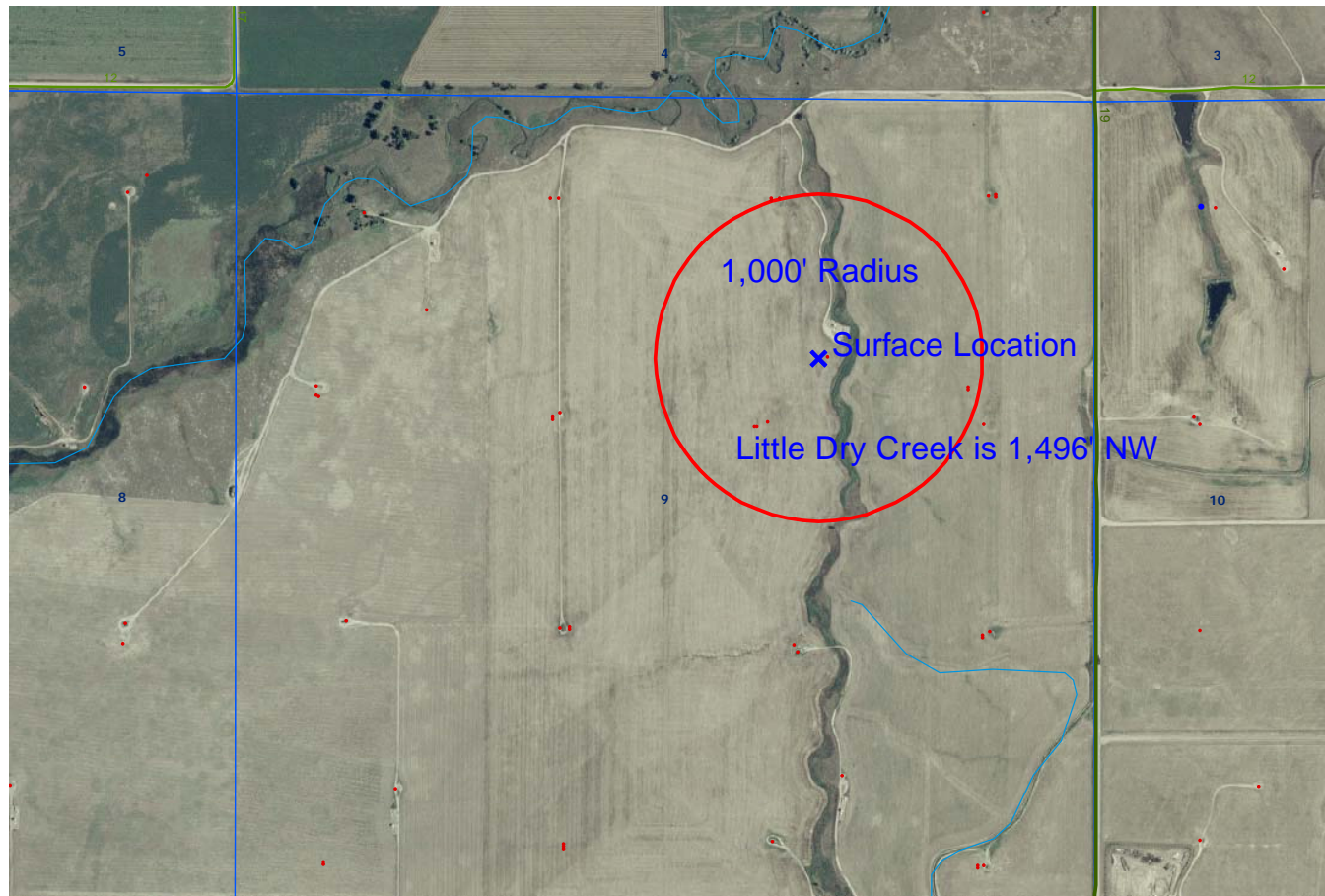
LEGEND B
1200-SEARIES WILDLIFE AREAS
■ RSO Areas
■ RSO_Osprey_Curren
■ SWH Areas
■ State Wildlife Areas



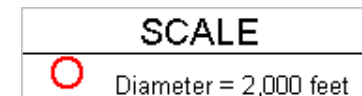
# NRC 1-9

# AERIAL

# HYDROLOGY MAP-A

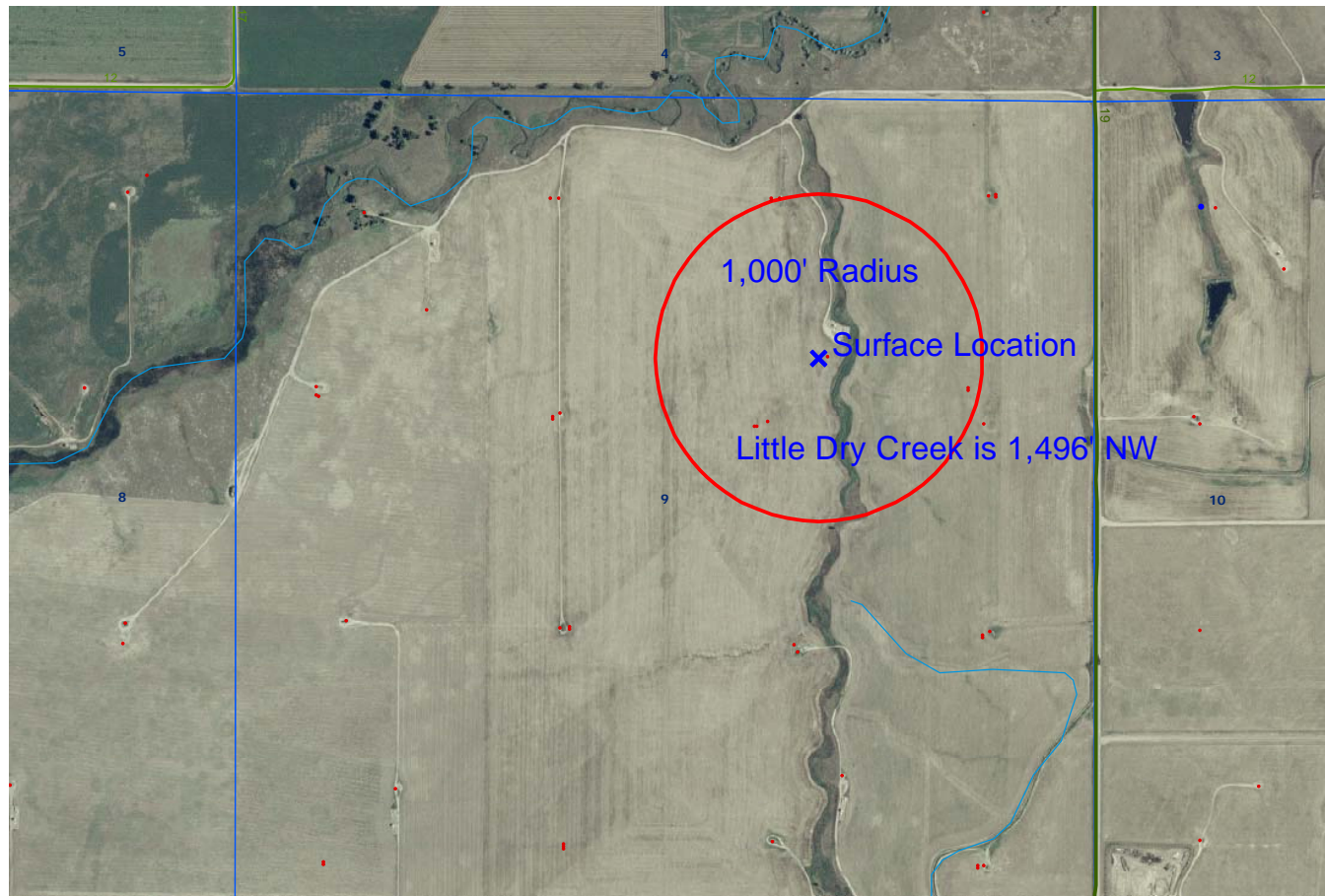


TOWNSHIP 1 NORTH, RANGE 67 WEST




LEGEND A
WATER RESOURCES
Water Wells
Lakes
Major Rivers
Streams
300-Foot Stream Buffers

LEGEND B
1200-SEARIES WILDLIFE AREAS
RSO Areas
RSO_Osprey_Curren
SWH Areas
State Wildlife Areas



TOWNSHIP 1 NORTH, RANGE 67 WEST

SCALE

 Diameter = 2,000 feet

## LEGEND A

## WATER RESOURCES

- Water Wells
- Lakes
- Major Rivers
- Streams
- 300-Foot Stream Buffers

## LEGEND B

## 1200-SEARIES WILDLIFE AREAS

- RSO Areas
- RSO\_Osprey\_Curren
- SWH Areas
- State Wildlife Areas