



SUPERIOR
WELL SERVICES
Black Lick, Pa.
Mercer, Pa.
Wooster, Oh.
Cleveland, Ok.
Trinidad, Co.

CEMENT BOND LOG

Company XTO Energy Inc.
Well New Elk 25-01
Field Purgatoire River
County Las Animas State Colorado

Location: API # : 05 071 09356 00

454' FNL & 135' FEL

SEC 25 TWP 33S RGE 68W

Permanent Datum Ground Level Elevation 7943'
Log Measured From Ground Level
Drilling Measured From Ground Level

Other Services
Elevation
K.B. -----
D.F. -----
G.L. 7943'

Date 9-05-07

Run Number	One		
Depth Driller	2225'		
Depth Logger	2163'		
Bottom Logged Interval	2161'		
Top Log Interval	Surface		
Open Hole Size	7 7/8"		
Type Fluid	Water		
Density / Viscosity	///		
Max. Recorded Temp.	102 DEG F		
Estimated Cement Top	460'		
Time Well Ready	9:15 A.M.		
Time Logger on Bottom	9:45 A.M.		
Equipment Number	T697		
Location	Trinidad		
Recorded By	M. Norton		
Witnessed By	Mr. Travis Gordin		

Borehole Record				Tubing Record			
Run Number	Bit	From	To	Size	Weight	From	To

Casing Record	Size	Wgt/Ft	Top	Bottom
Surface String	8 5/8"		00	496'
Prot. String				
Production String	5 1/2"		00	N/A
Liner				

<<< Fold Here >>>

All interpretations are opinions based on inferences from electrical or other measurements and we cannot and do not guarantee the accuracy or correctness of any interpretation, and we shall not, except in the case of gross or willful negligence on our part, be liable or responsible for any loss, costs, damages, or expenses incurred or sustained by anyone resulting from any interpretation made by any of our officers, agents or employees. These interpretations are also subject to our general terms and conditions set out in our current Price Schedule.

Comments

Well Directions:
Second Bosque entrance four miles after Weston,
right on Apache Canyon, first right after third drive thru location, end on location.

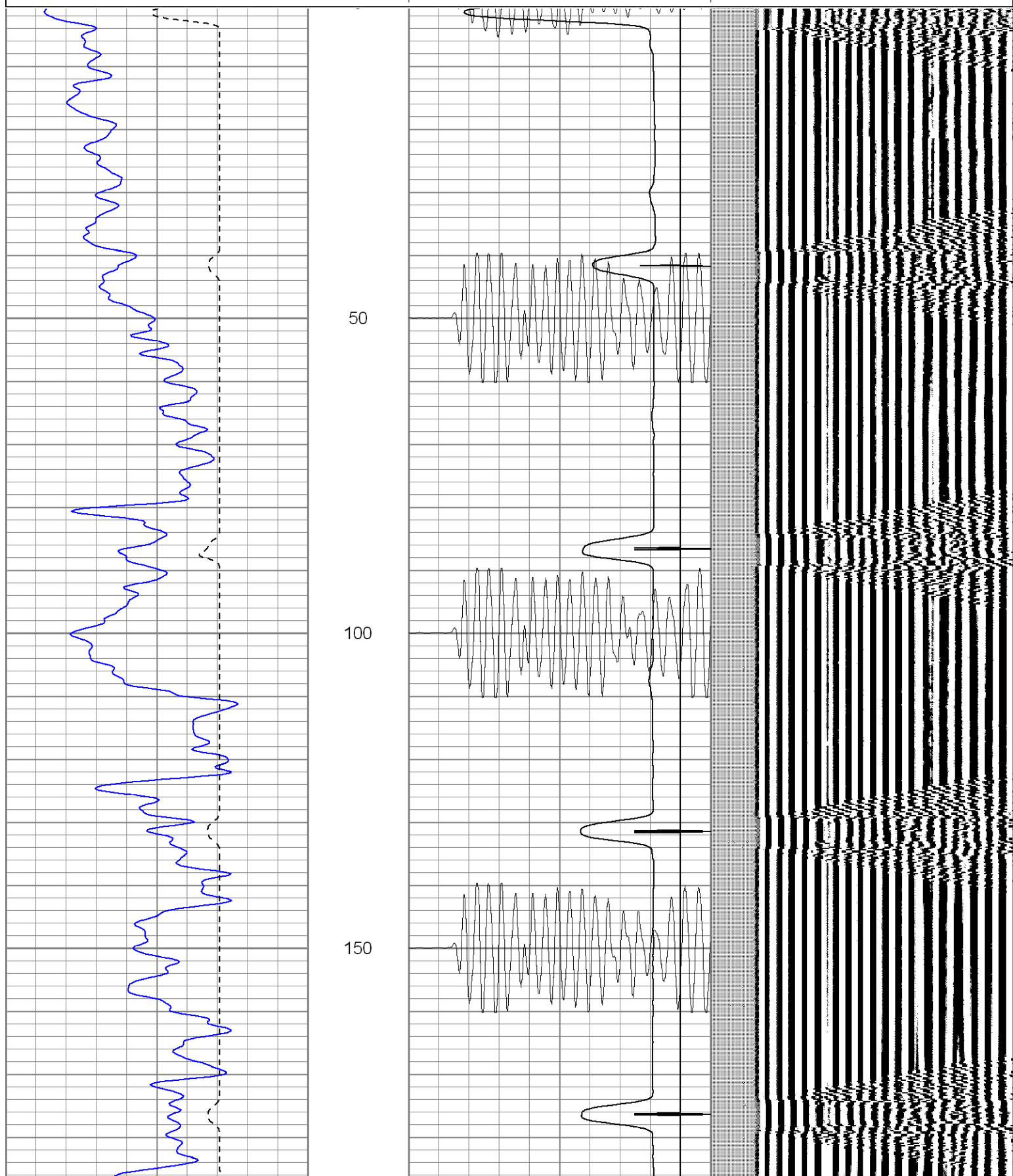


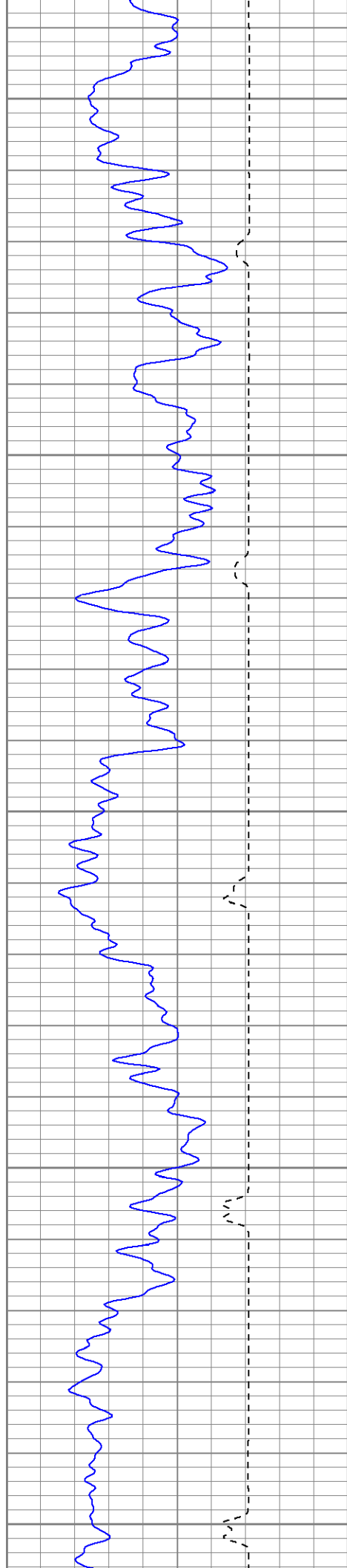
SUPERIOR
Black Lick, Pa.
Mercer, Pa.
Wooster, Oh.
Cleveland, Ok.
Trinidad, Co.

Main Pass 1000 PSI

Database File: xstone2501-090507b.db
Dataset Pathname: pass2
Presentation Format: cblrt
Dataset Creation: Wed Sep 05 09:50:12 2007 by Log Open-Cased 061129
Charted by: Depth in Feet scaled 1:240

0	GR (GAPI)	200	0	AMP3 (mV)	100	200	Variable Density	1200
400	TT3 (usec)	200	18	CCL	-2			
-----			200	CBL5	1200			





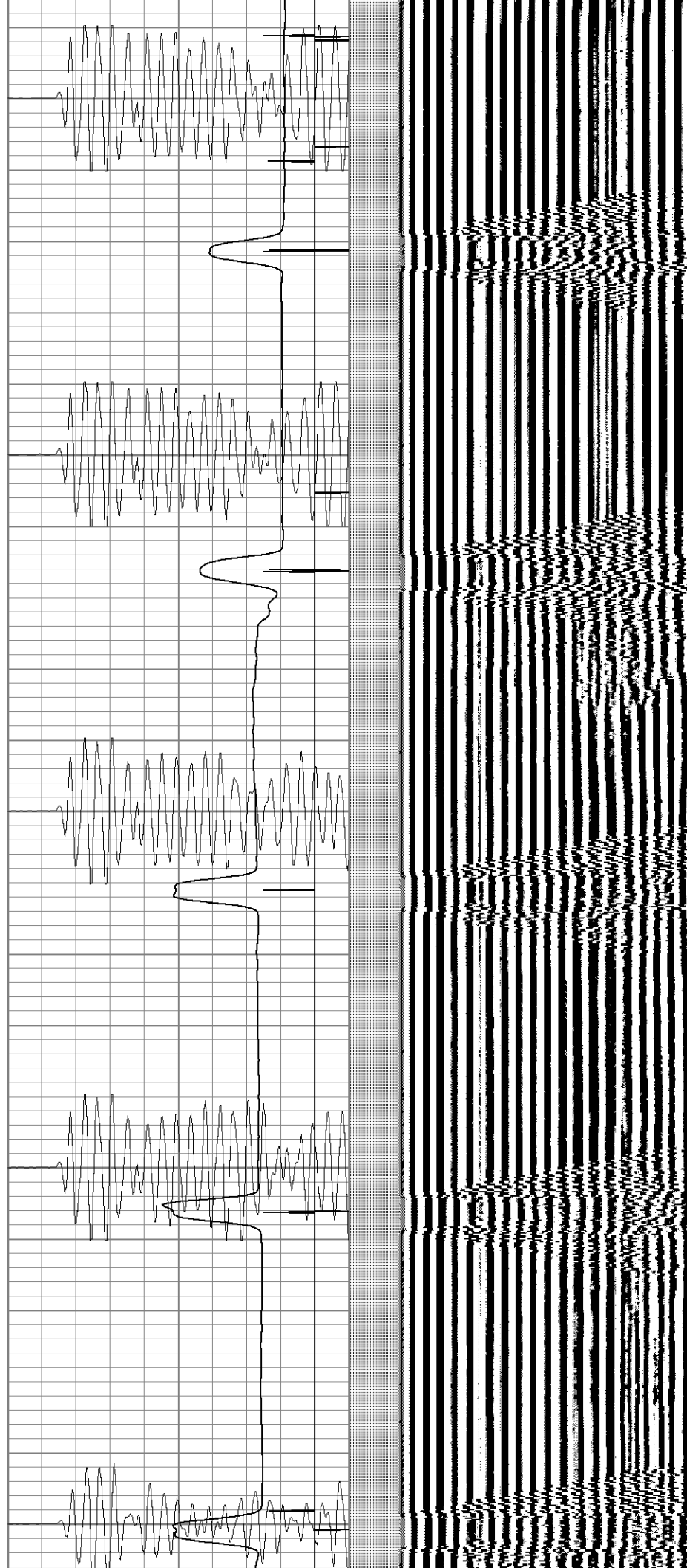
200

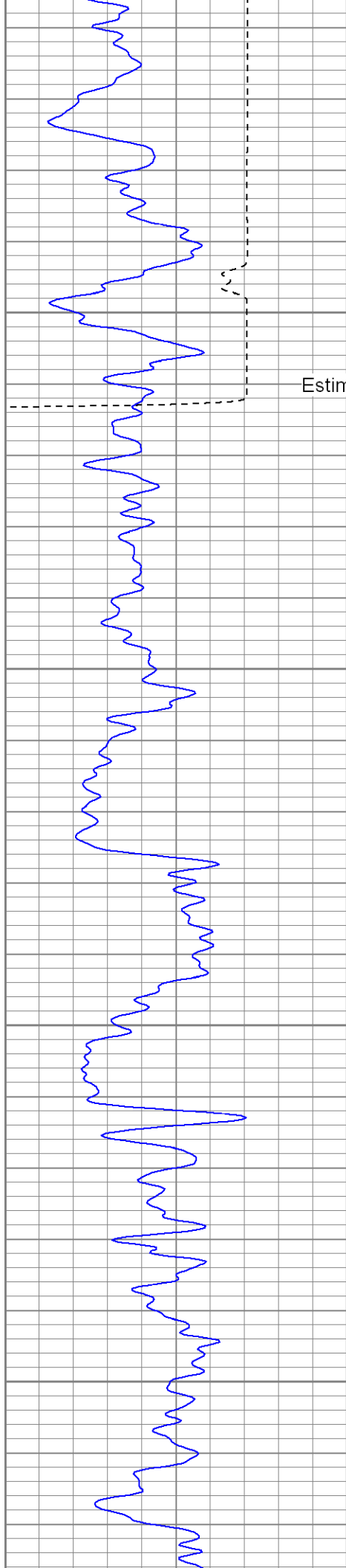
250

300

350

400





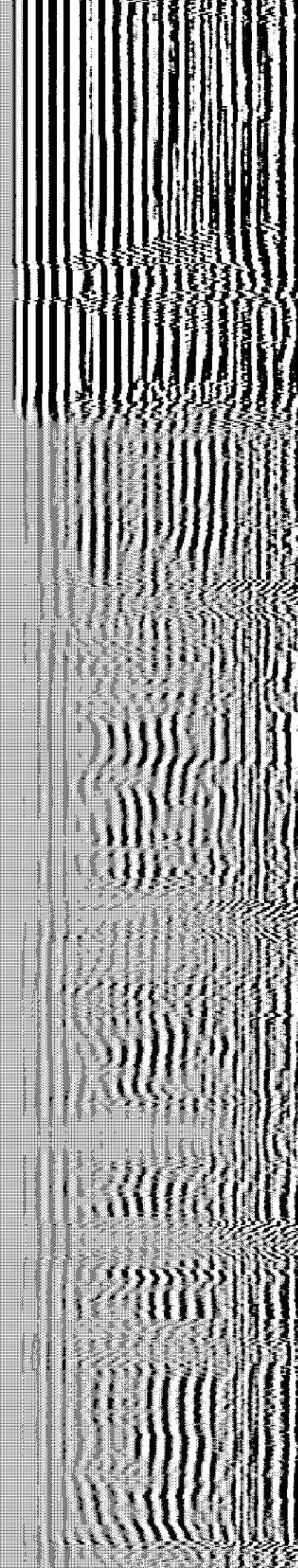
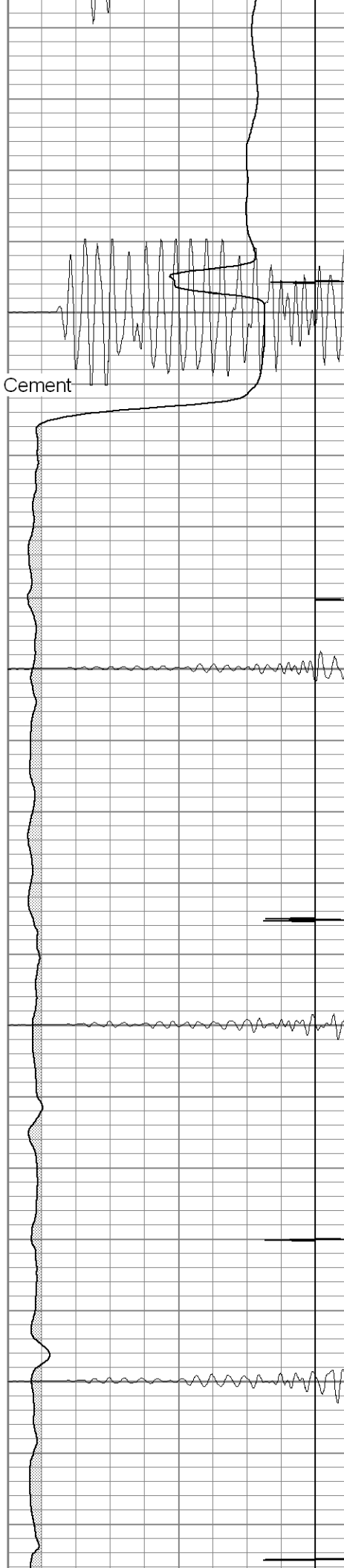
Estimated Top of Cement

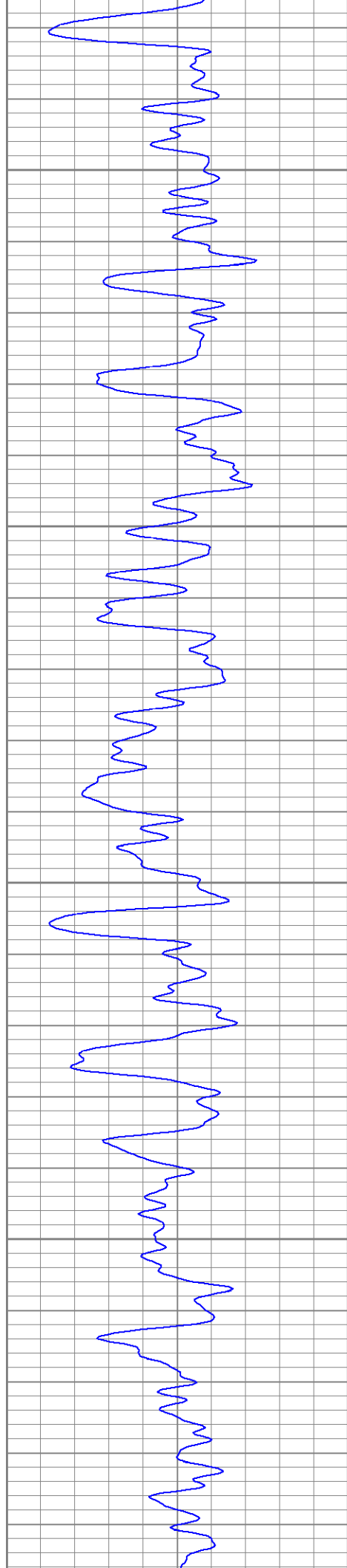
450

500

550

600



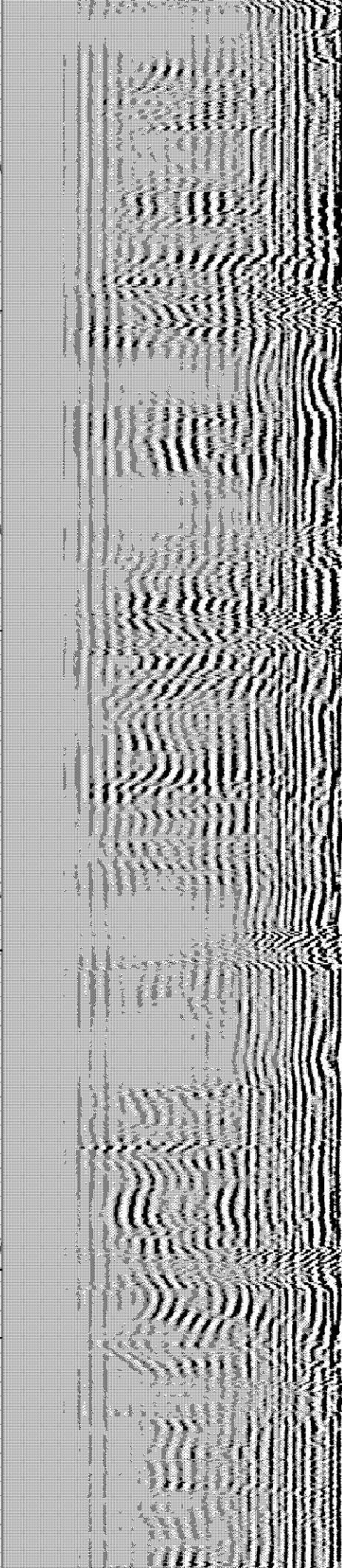
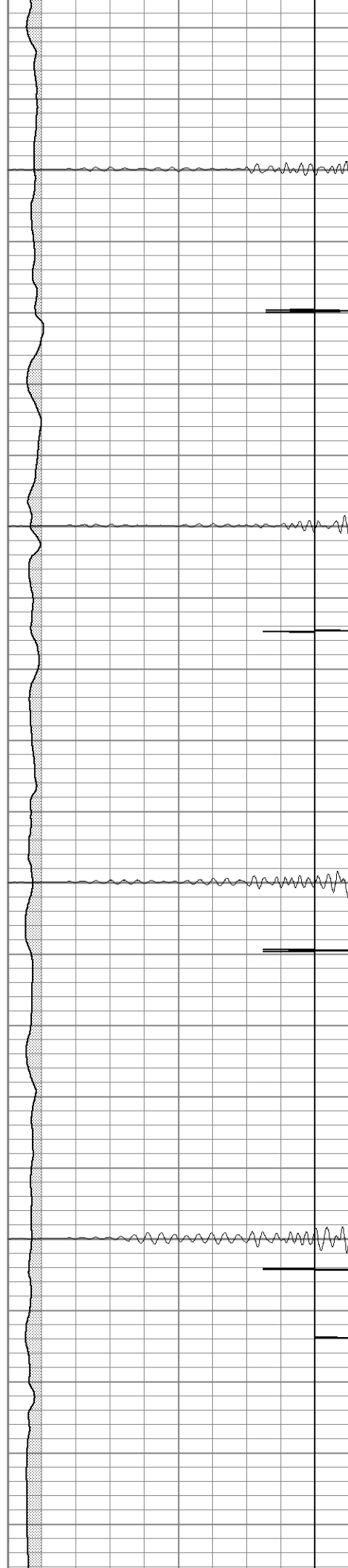


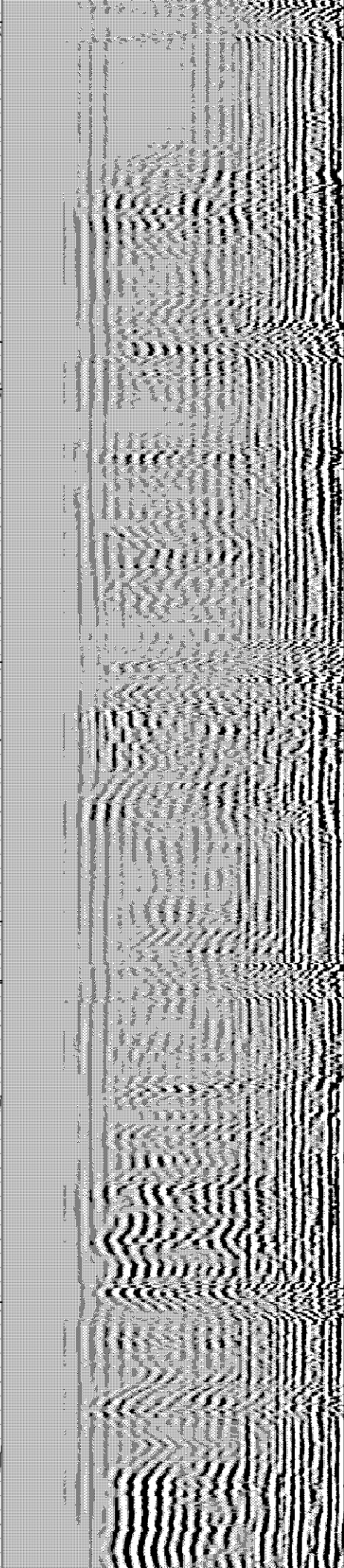
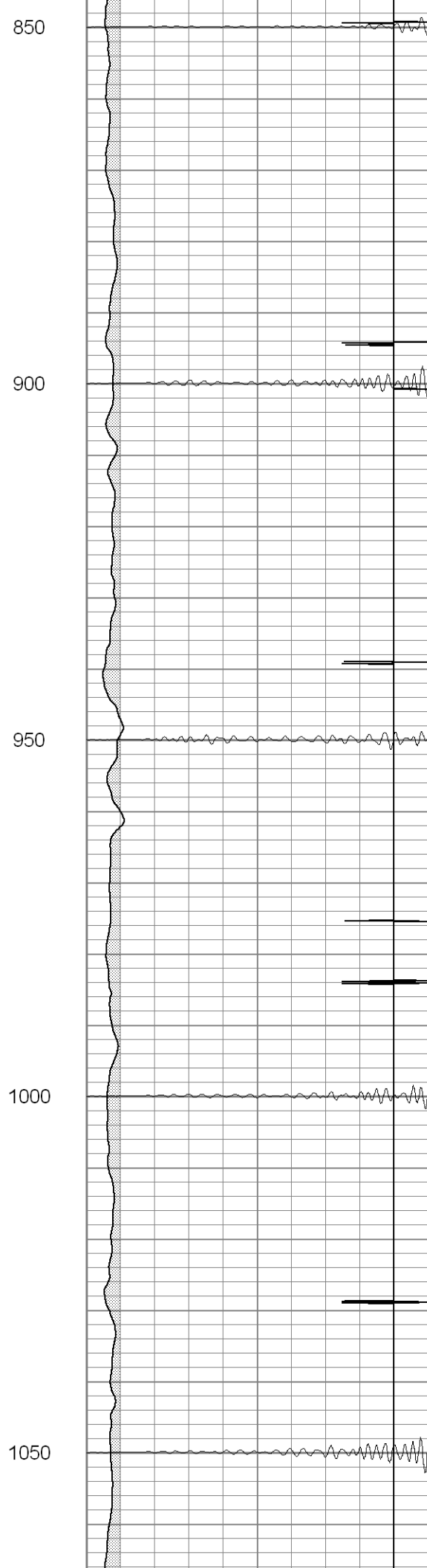
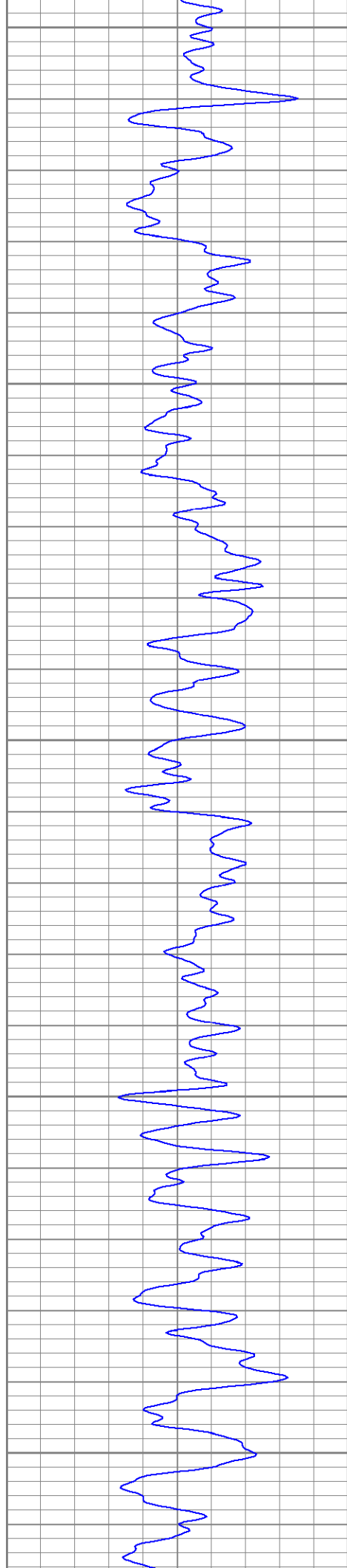
650

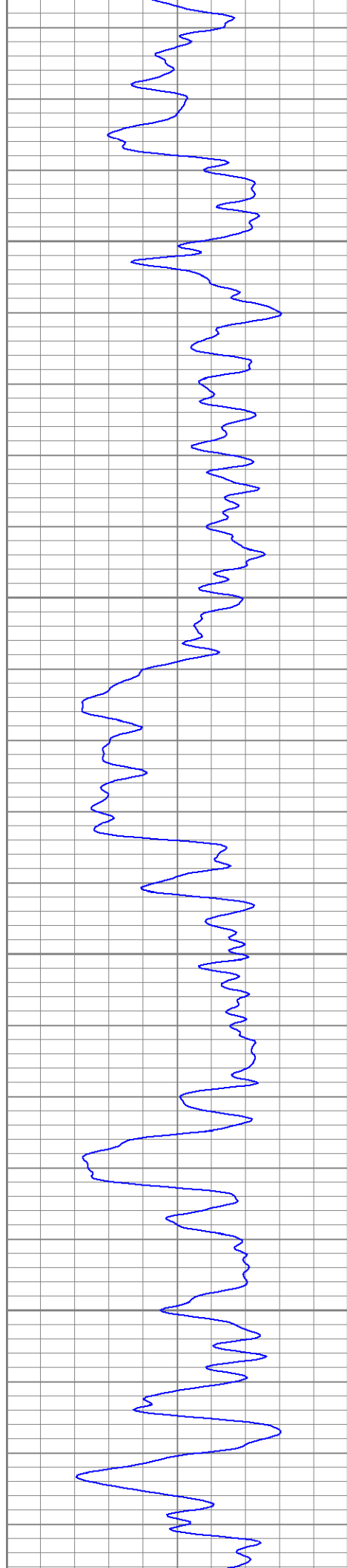
700

750

800





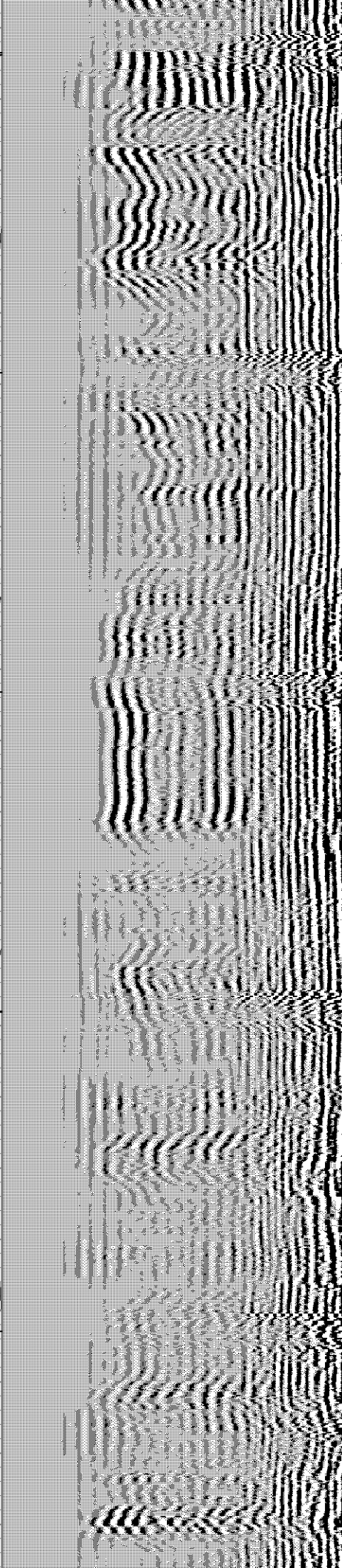
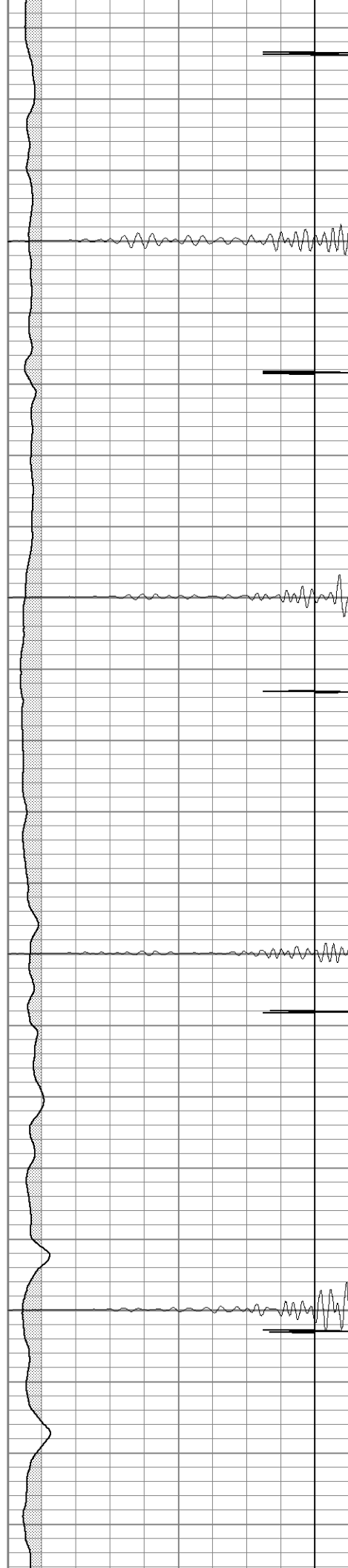


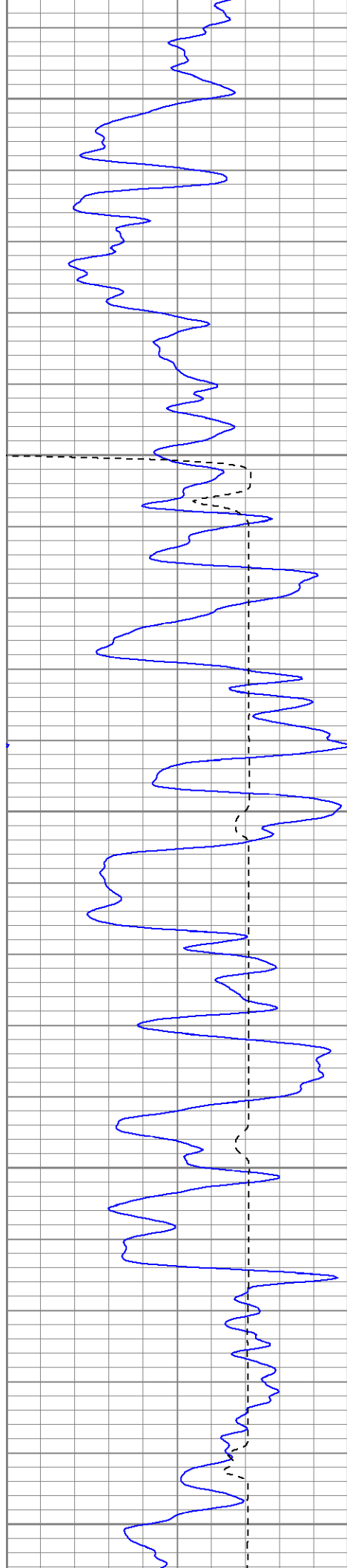
1100

1150

1200

1250





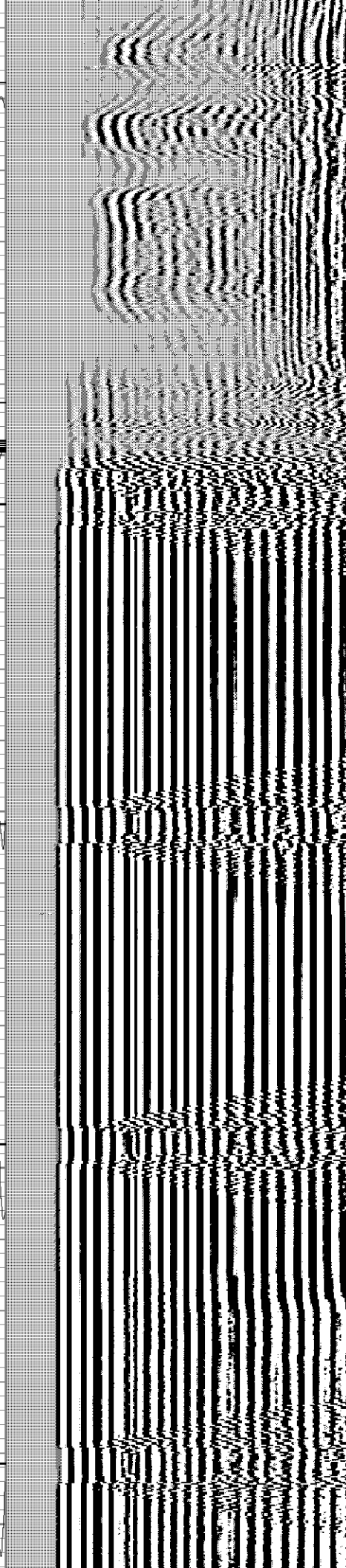
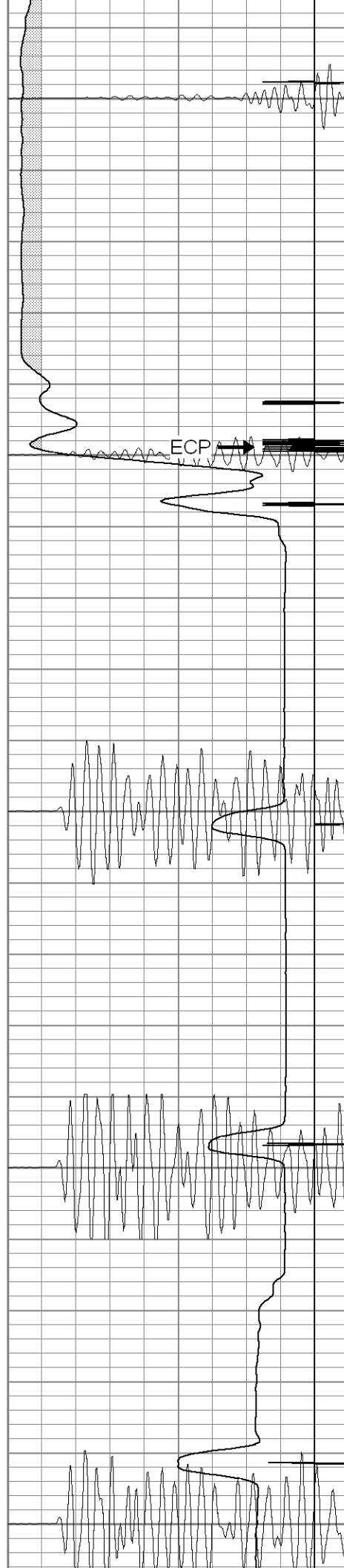
1300

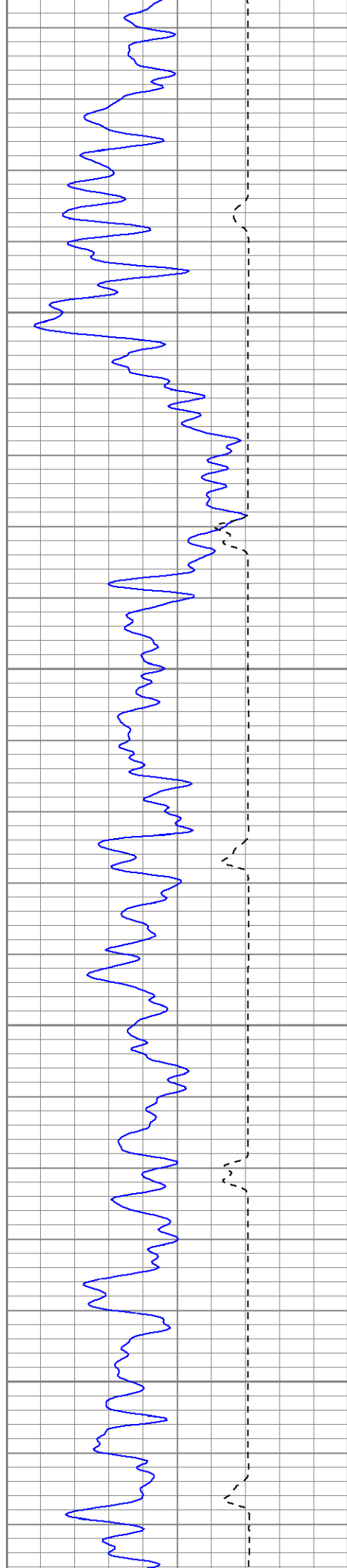
1350

1400

1450

1500



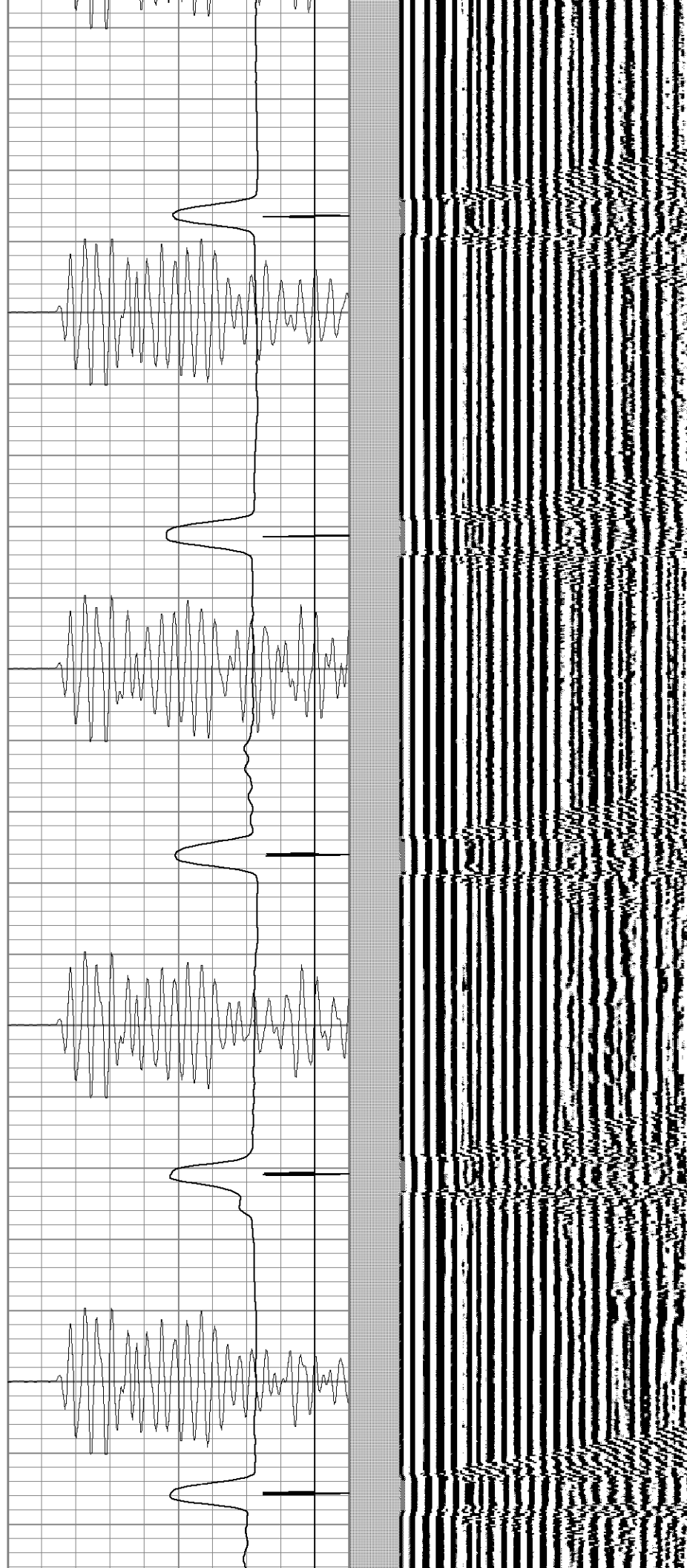


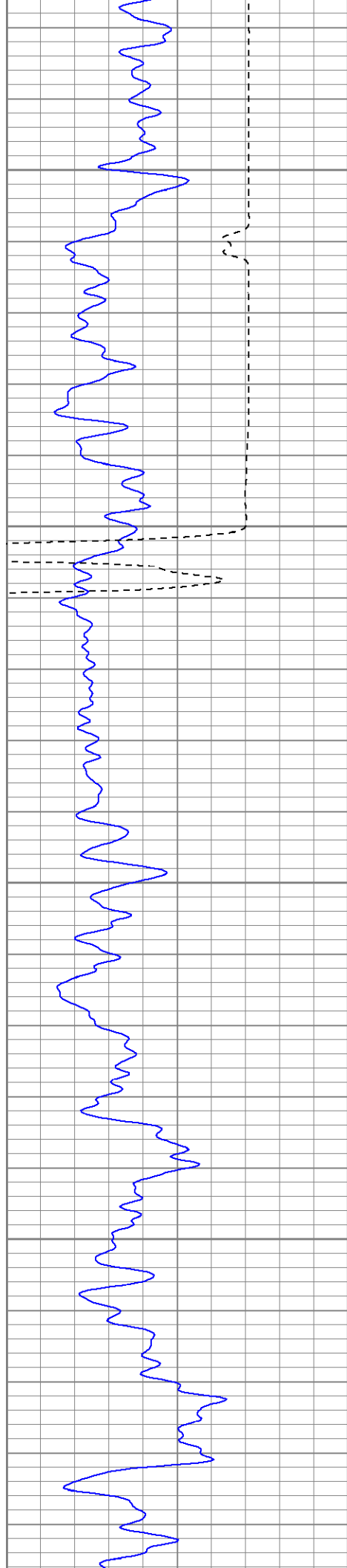
1550

1600

1650

1700



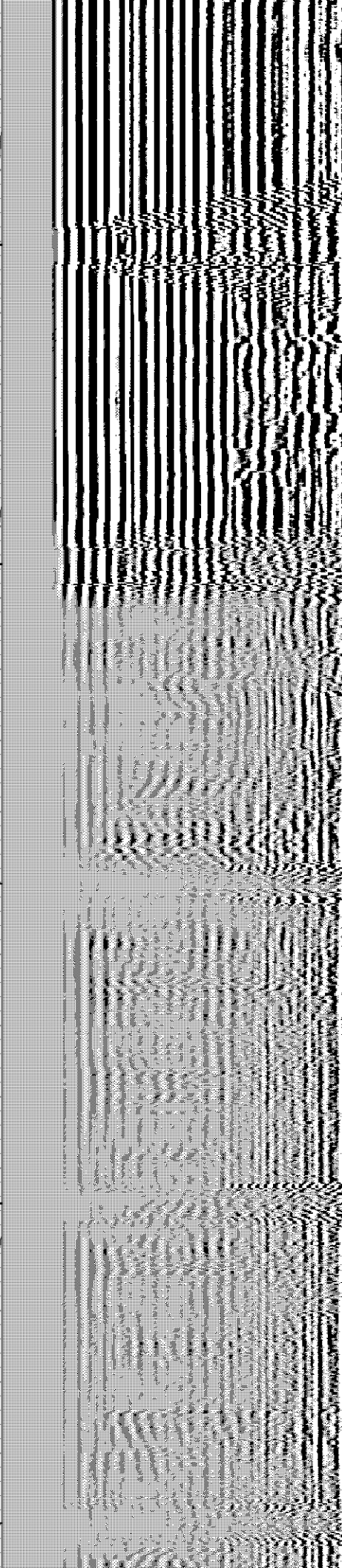
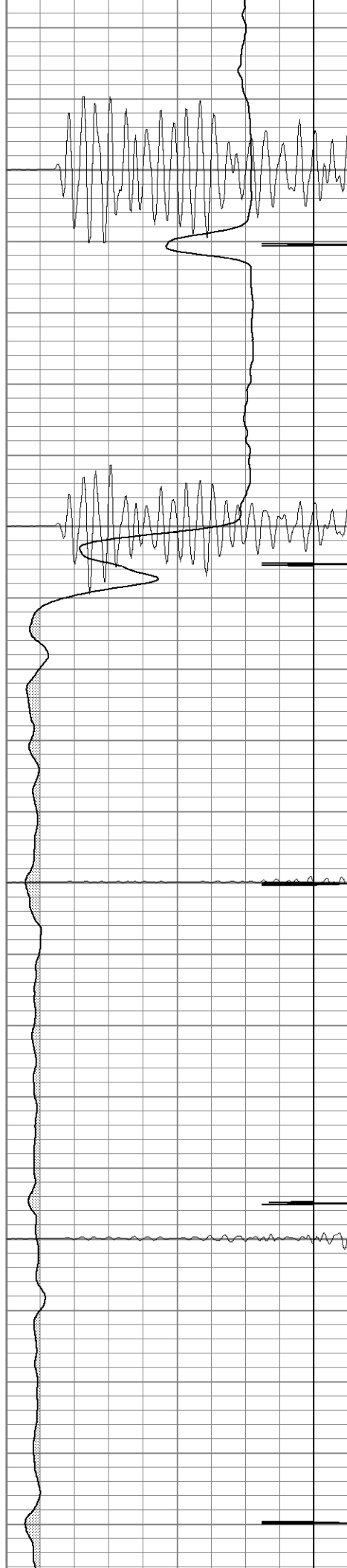


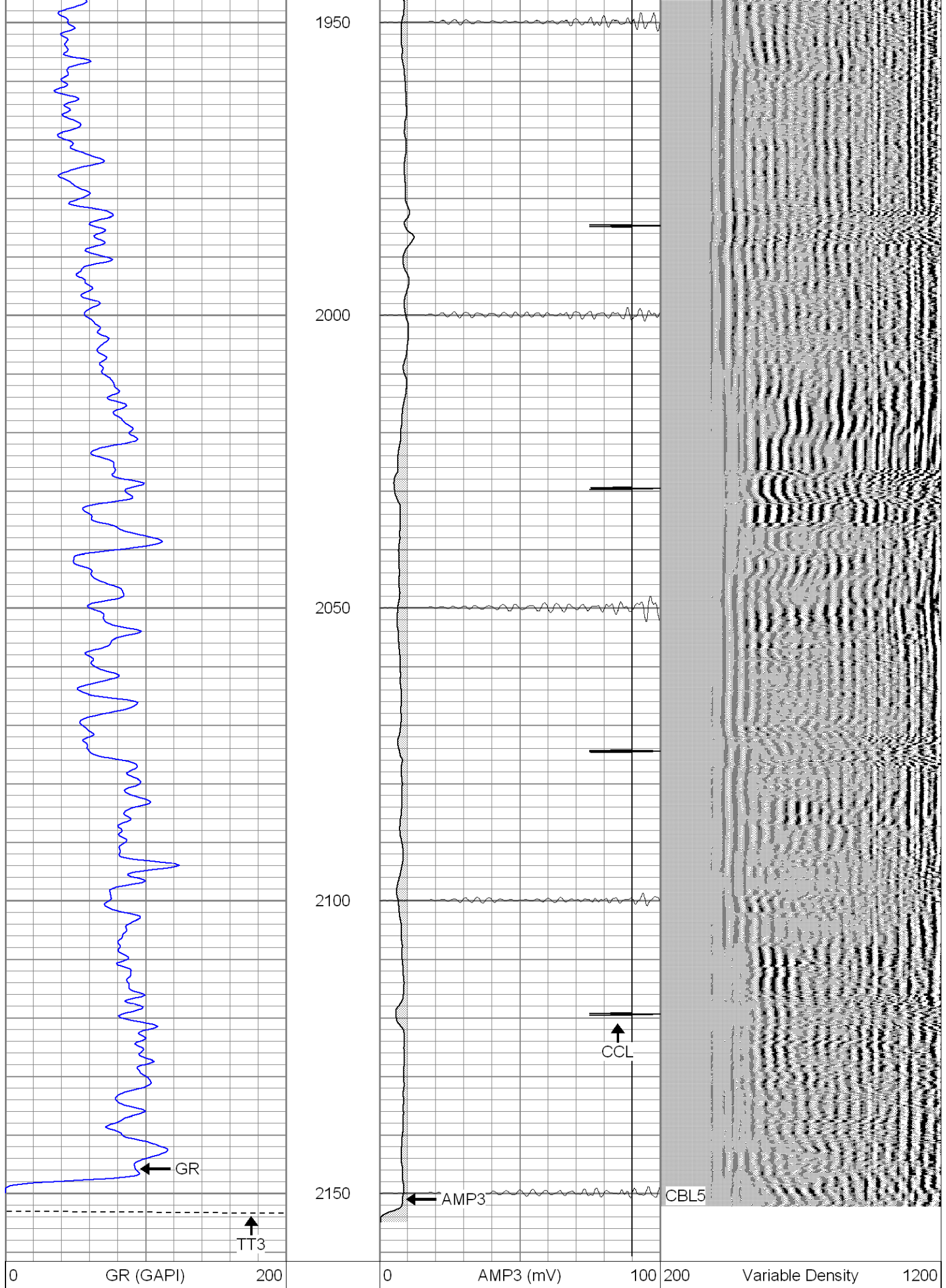
1750

1800

1850

1900





400	TT3 (usec)	200
<hr/>		

18	CCL	-2
200	CBL5	1200



SUPERIOR

Black Lick, Pa.
Mercer, Pa.
Wooster, Oh.
Cleveland, Ok.
Trinidad, Co.

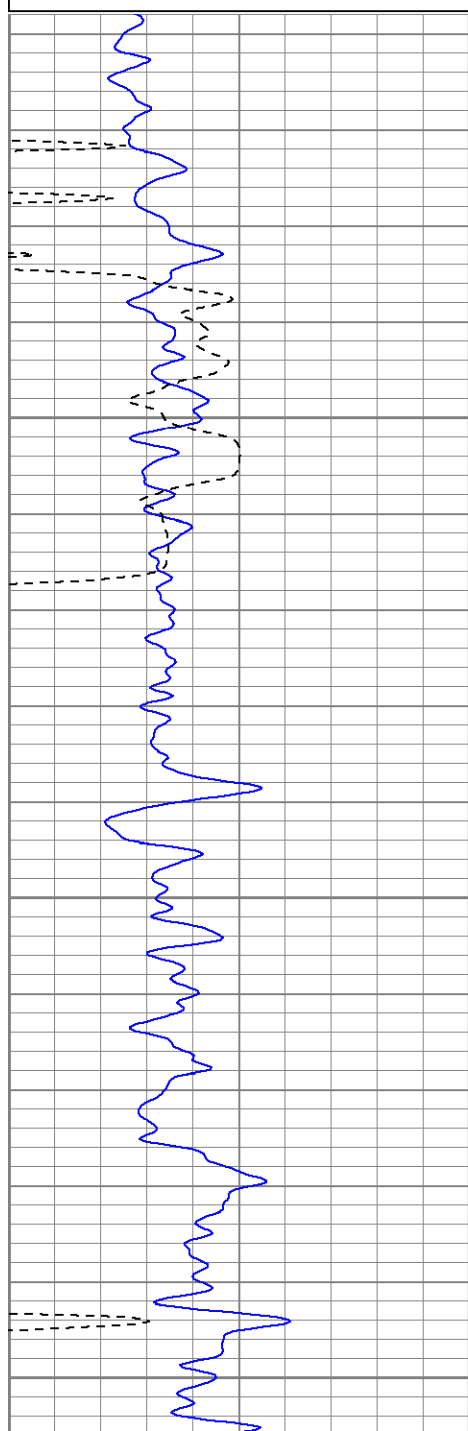
Repeat Pass No Pressure

Database File: xtone2501-090507b.db
Dataset Pathname: pass1
Presentation Format: cblrt
Dataset Creation: Wed Sep 05 09:42:34 2007 by Log Open-Cased 061129
Charted by: Depth in Feet scaled 1:240

0	GR (GAPI)	200
400	TT3 (usec)	200
<hr/>		

0	AMP3 (mV)	100
18	CCL	-2
200	CBL5	1200

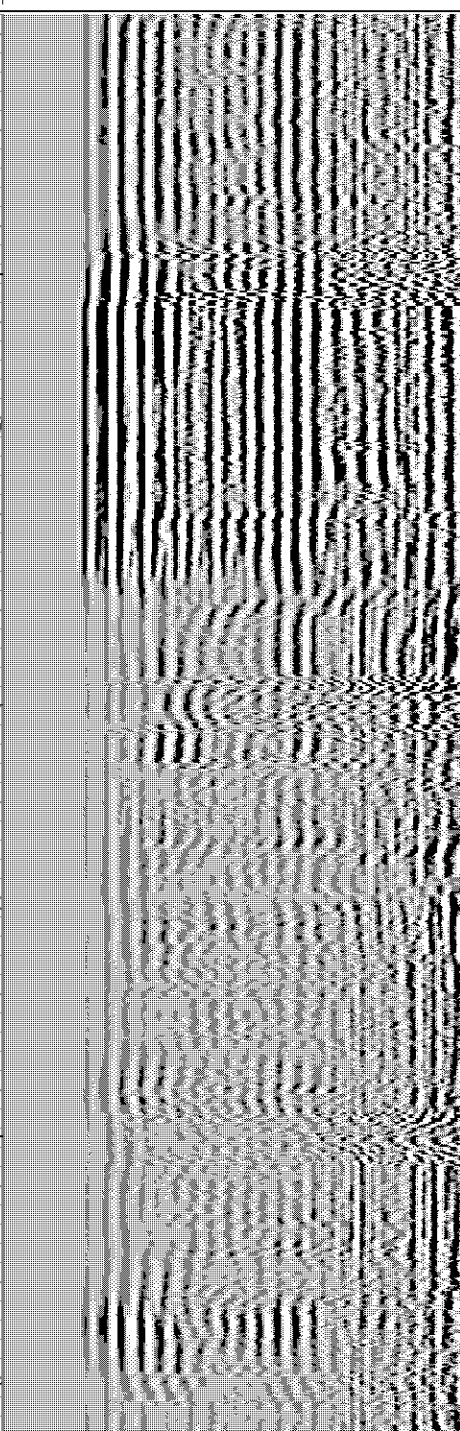
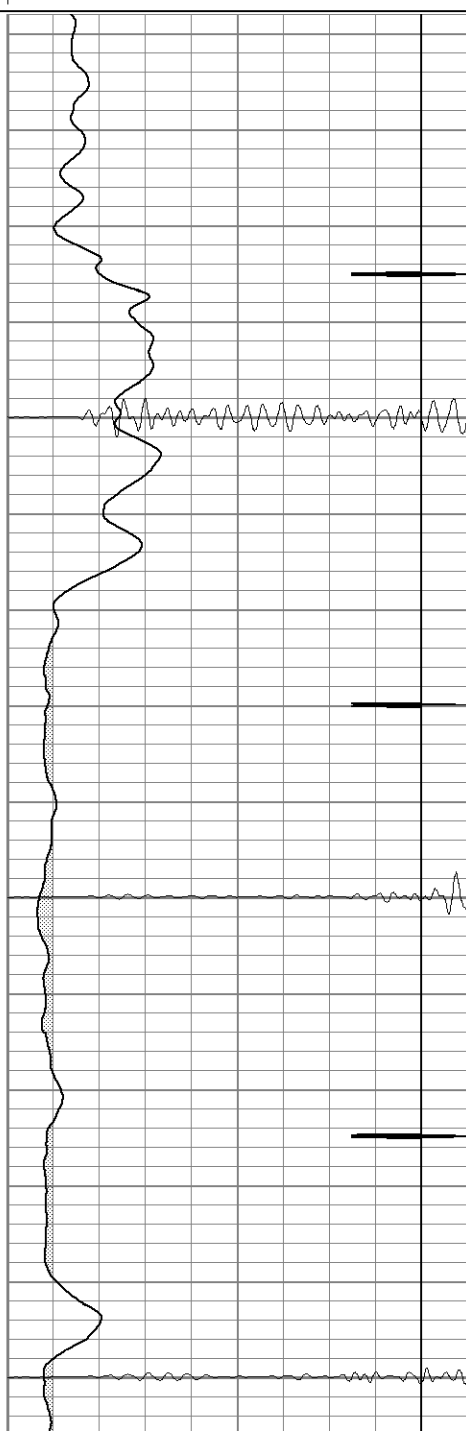
200 Variable Density 1200

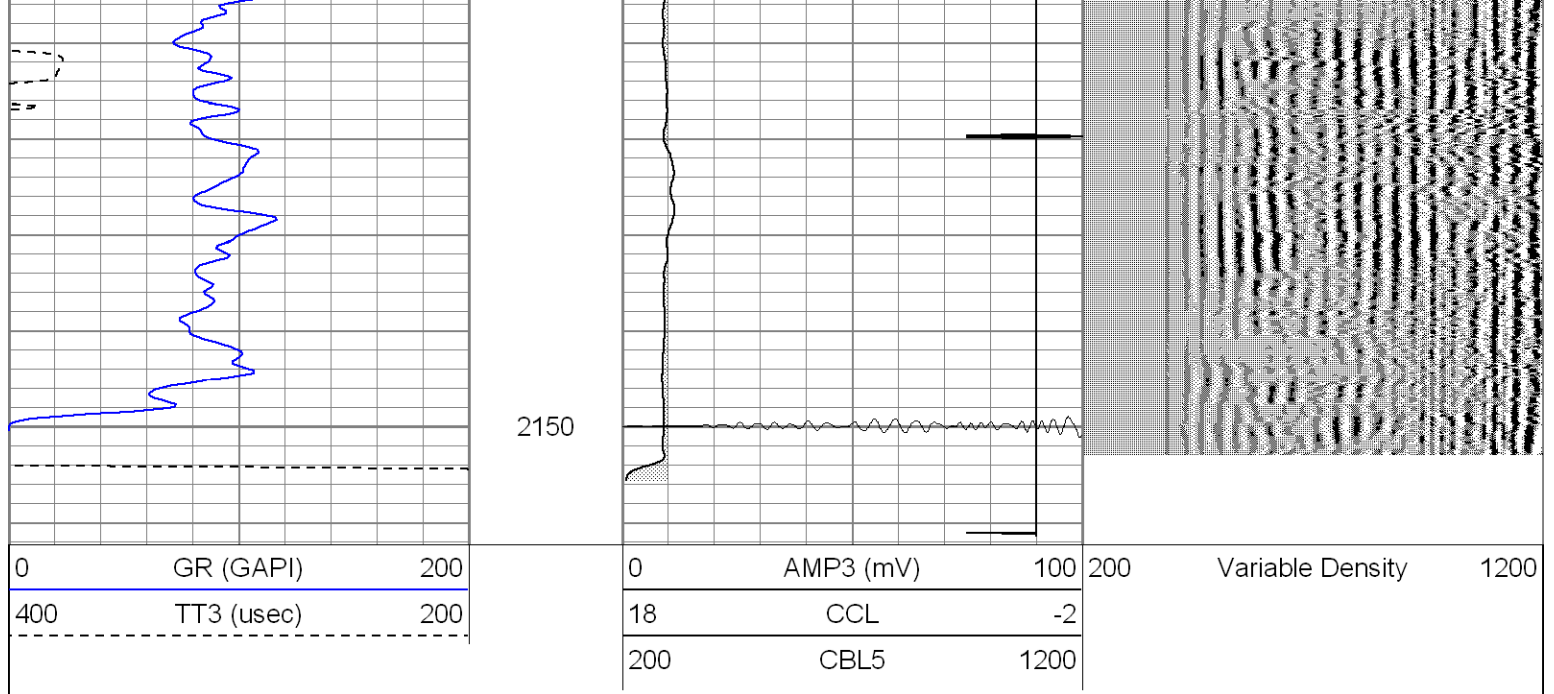


2000

2050

2100





Calibration Report

Database File: xtone2501-090507b.db
 Dataset Pathname: pass1
 Dataset Creation: Wed Sep 05 09:42:34 2007 by Log Open-Cased 061129

Cement Bond Log Calibration Report

Serial Number:	Titan3		
Tool Model:	T3		
Performed:	Wed Sep 05 09:36:15 2007		
Depth:	0	ft	
Casing Diameter:	0	in	
	3' Spacing	5' Spacing	
Signal Zero:	1	1	mV
Calibrated Amplitude:	85	85	mV
Reading at Signal Zero:	0.01	0.01	V
Reading in Free Pipe:	1.6	2.25	V
Gain:	52.8302	37.5	
Offset:	0.471698	0.625	

Gamma Ray Calibration Report

Serial Number:	Titan3	
Tool Model:	T3	
Performed:	Thu Aug 23 11:56:29 2007	
Calibrator Value:	1.0	GAPI
Background Reading:	0.0	cps
Calibrator Reading:	1.0	cps
Sensitivity:	1.0000	GAPI/cps

Sensor	Offset (ft)	Schematic	Description	Len (ft)	OD (in)	Wt (lb)
GR	13.40		None	0.75	1.50	5.00
			GR-T3 (Titan3) Titan3	2.52	2.25	25.00

WVF5	9.24		CBL-T3 (Titan3)	7.23	2.25	110.00
WVF3	8.24		Titan3			
			X	3.00	1.69	25.00
CCL	0.70		CCL-T2 (Titan2) Short	1.91	2.75	15.00
Dataset: xtone2501-090507b.db: field/well/run1/pass2 Total Length: 15.41 ft Total Weight: 180.00 lb O.D. 2.75 in						