

Patterson

**CEMENT BOND
GAMMA RAY**

Company XTO Energy Inc.
Well Golden Eagle 20-11
Field Purgatorie River
County Las Animas
State CO

Company XTO Energy Inc.
Well Golden Eagle 20-11
Field Purgatorie River
County Las Animas
State CO

Location: API #: 05 071 08800 00

2119' FSL & 2197' FWL

SEC 20 TWP 33S RGE 67W

Permanent Datum Ground Level Elevation 7752'
Log Measured From Ground Level
Drilling Measured From Ground Level

Elevation
K.B. -----
D.F. -----
G.L. 7752'

Date 9/23/06

Run Number one

Depth Driller 1043'

Depth Logger 587'

Bottom Logged Interval 583'

Top Log Interval Surf.

Open Hole Size 11"

Type Fluid water

Density / Viscosity ///

Max. Recorded Temp. 86F

Estimated Cement Top NA

Time Well Ready 6:00

Time Logger on Bottom 6:10

Equipment Number T244

Location Trinidad

Recorded By Worley

Witnessed By Mr. Johnson

Borehole Record		Tubing Record					
Run Number	Bit	From	To	Size	Weight	From	To

Casing Record Size Wgt/Ft Top Bottom

Surface String 8 5/8" 00 1043'

Prot. String

Production String

Liner

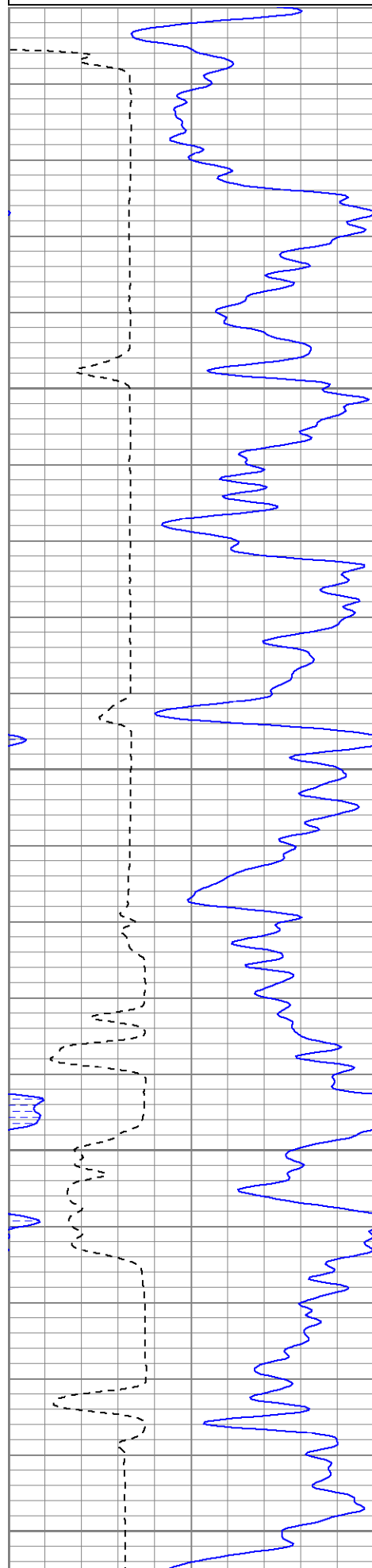
<<< Fold Here >>>

All interpretations are opinions based on inferences from electrical or other measurements and we cannot and do not guarantee the accuracy or correctness of any interpretation, and we shall not, except in the case of gross or willful negligence on our part, be liable or responsible for any loss, costs, damages, or expenses incurred or sustained by anyone resulting from any interpretation made by any of our officers, agents or employees. These interpretations are also subject to our general terms and conditions set out in our current Price Schedule.

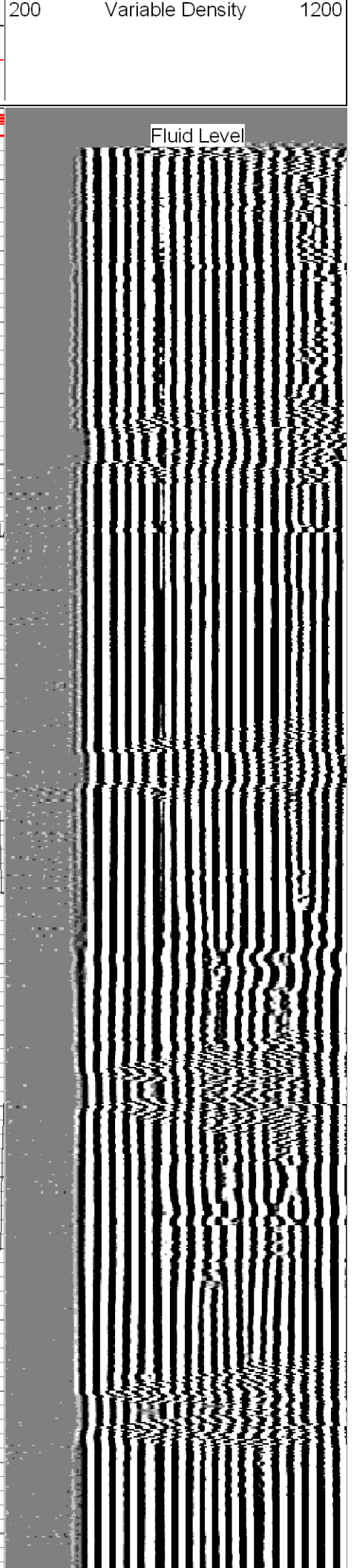
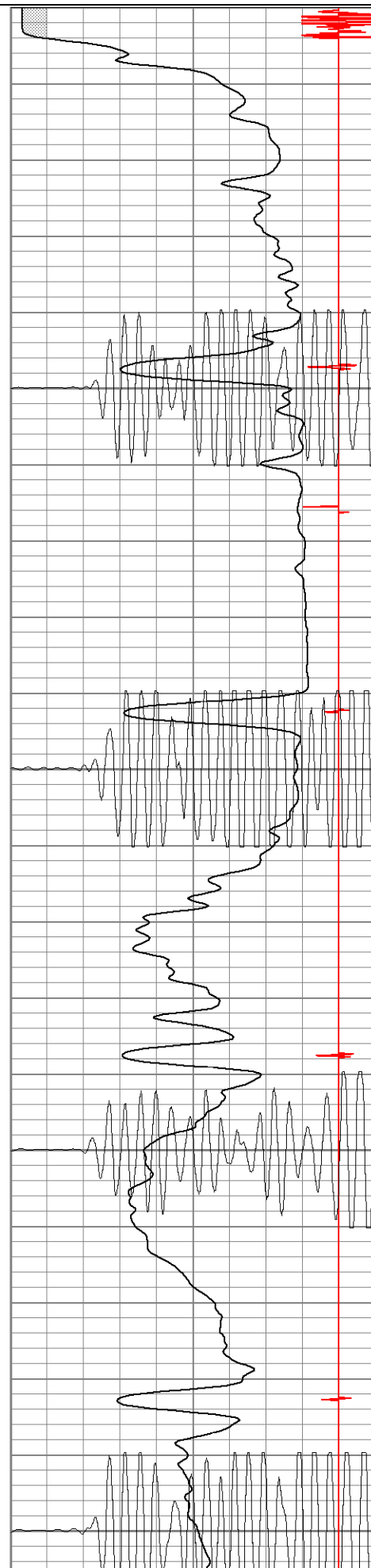
Comments

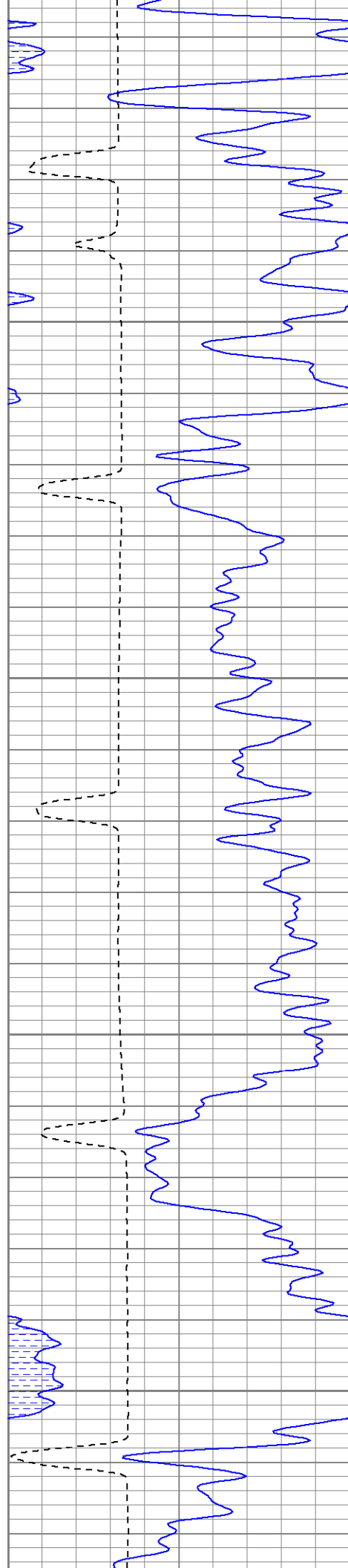
Database File: ge20-11b92306.db
Dataset Pathname: pass1.1
Presentation Format: cblrt
Dataset Creation: Sat Sep 23 06:32:52 2006 by Calc Warrior 7.0 STD Cas
Charted by: Depth in Feet scaled 1:240

0	GR (GAPI)	200
400	TT3 (usec)	200



0	AMP3 (mV)	200
18	CCL	-2
200	CBL5	1200





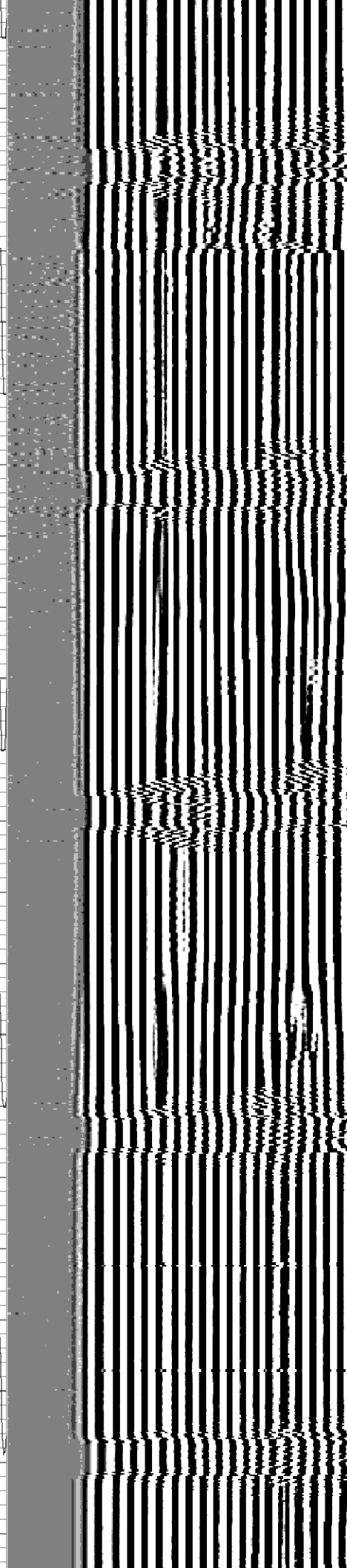
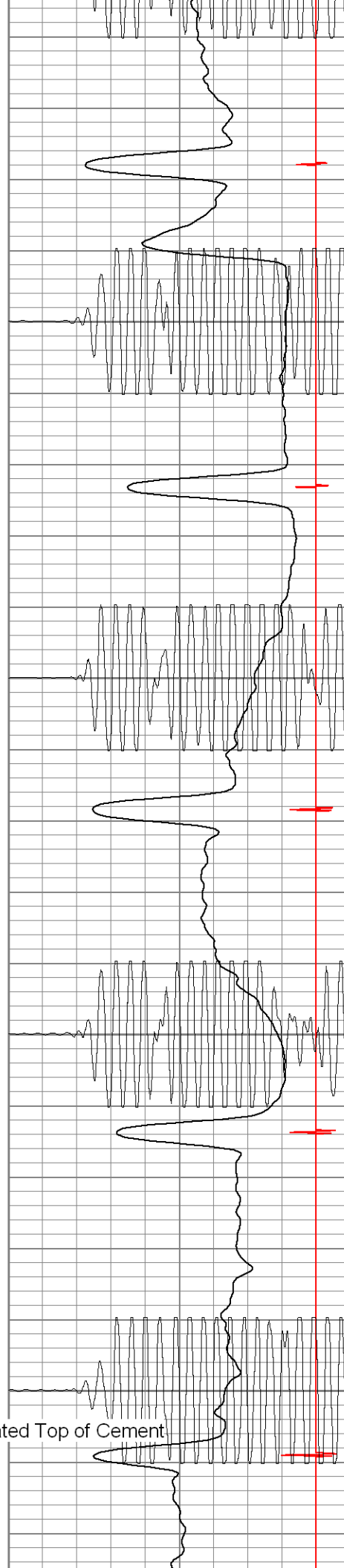
250

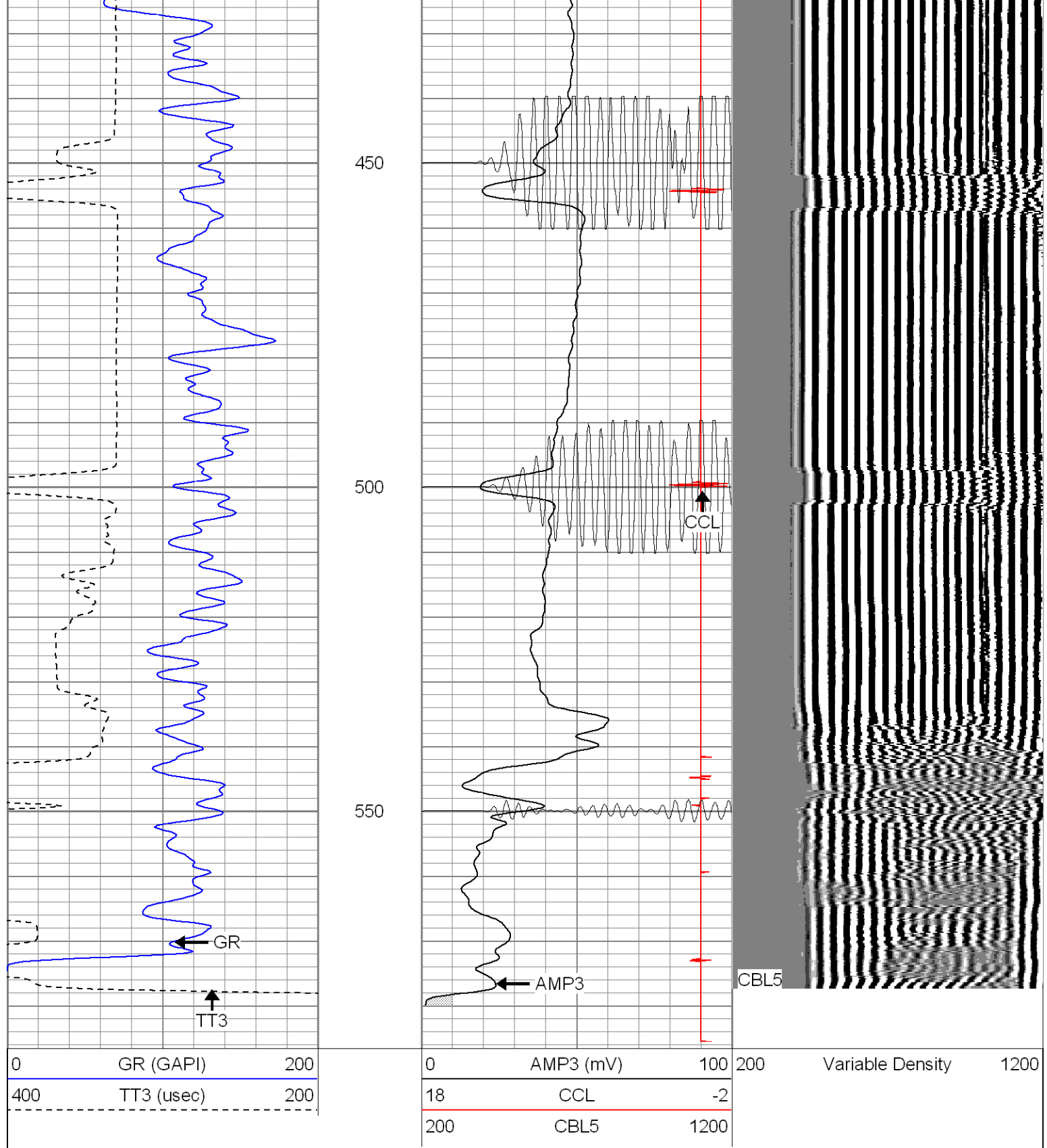
300

350

400

Estimated Top of Cement





Cement Bond Log Calibration Report

Serial Number: Titan5
Tool Model: 2
Performed: Sat Sep 23 06:11:53 2006

Depth: 0 ft
Casing Diameter: 0 in

3' Spacing

5' Spacing

Signal Zero:	0	0	mV
Calibrated Amplitude:	85	85	mV
Reading at Signal Zero:	-0.02	0.00866699	V
Reading in Free Pipe:	1.15	1.4	V
Gain:	72.6496	61.0925	
Offset:	1.45299	-0.529488	

Gamma Ray Calibration Report

Serial Number:	Titan5
Tool Model:	T2
Performed:	Thu Aug 17 10:26:00 2006
Calibrator Value:	1.0

CAD