

Patterson

**CEMENT BOND
GAMMA RAY
LOG**

Company		XTO Energy, Inc.	
Well		Apache Canyon 06-02	
Field		Purgatoire River	
County		Las Animas	
State		CO	
Company		XTO Energy, Inc.	
Well		Apache Canyon 06-02	
Field		Purgatoire River	
County		Las Animas	
State		CO	
Location:		API # : 05 071 08789 00	
SEC 06 TWP 34S RGE 67W		438' FNL & 2516' FEL	
Permanent Datum		Ground Level	
Log Measured From		Ground Level	
Drilling Measured From		Ground Level	
Elevation		8149'	
Other Services		Pressure Control	
K.B. -----		Elevation	
D.F. -----		8149'	
G.L. 8149'			
Date		7-31-06	
Run Number		One	
Depth Driller		2665'	
Depth Logger		2580'	
Bottom Logged Interval		2578'	
Top Log Interval		Surface	
Open Hole Size		7 7/8"	
Type Fluid		Water	
Density / Viscosity		///	
Max. Recorded Temp.		///	
Estimated Cement Top		130'	
Time Well Ready		11:50AM	
Time Logger on Bottom		12:20PM	
Equipment Number		1875	
Location		Trinidad	
Recorded By		E. Ray	
Witnessed By		Mr. Ryan Rensink	
Run Number		Borehole Record	
Bit		From	
To		Size	
Weight		Tubing Record	
From		To	
Casing Record		Size	
Surface String		8 5/8"	
Prot. String		Wgt/Ft	
Production String		Top	
Liner		Bottom	
51/2"		00	
		N/A	

<<< Fold Here >>>

All interpretations are opinions based on inferences from electrical or other measurements and we cannot and do not guarantee the accuracy or correctness of any interpretation, and we shall not, except in the case of gross or willful negligence on our part, be liable or responsible for any loss, costs, damages, or expenses incurred or sustained by anyone resulting from any interpretation made by any of our officers, agents or employees. These interpretations are also subject to our general terms and conditions set out in our current Price Schedule.

Comments

First Bosque entrance, Right on Cherry Canyon, @first Y stay Left, Thru Two Gates, Stay on Main Road @ Top of Hill @ T stay Left, Drive thru Location, @ T stay right, First Location on Right

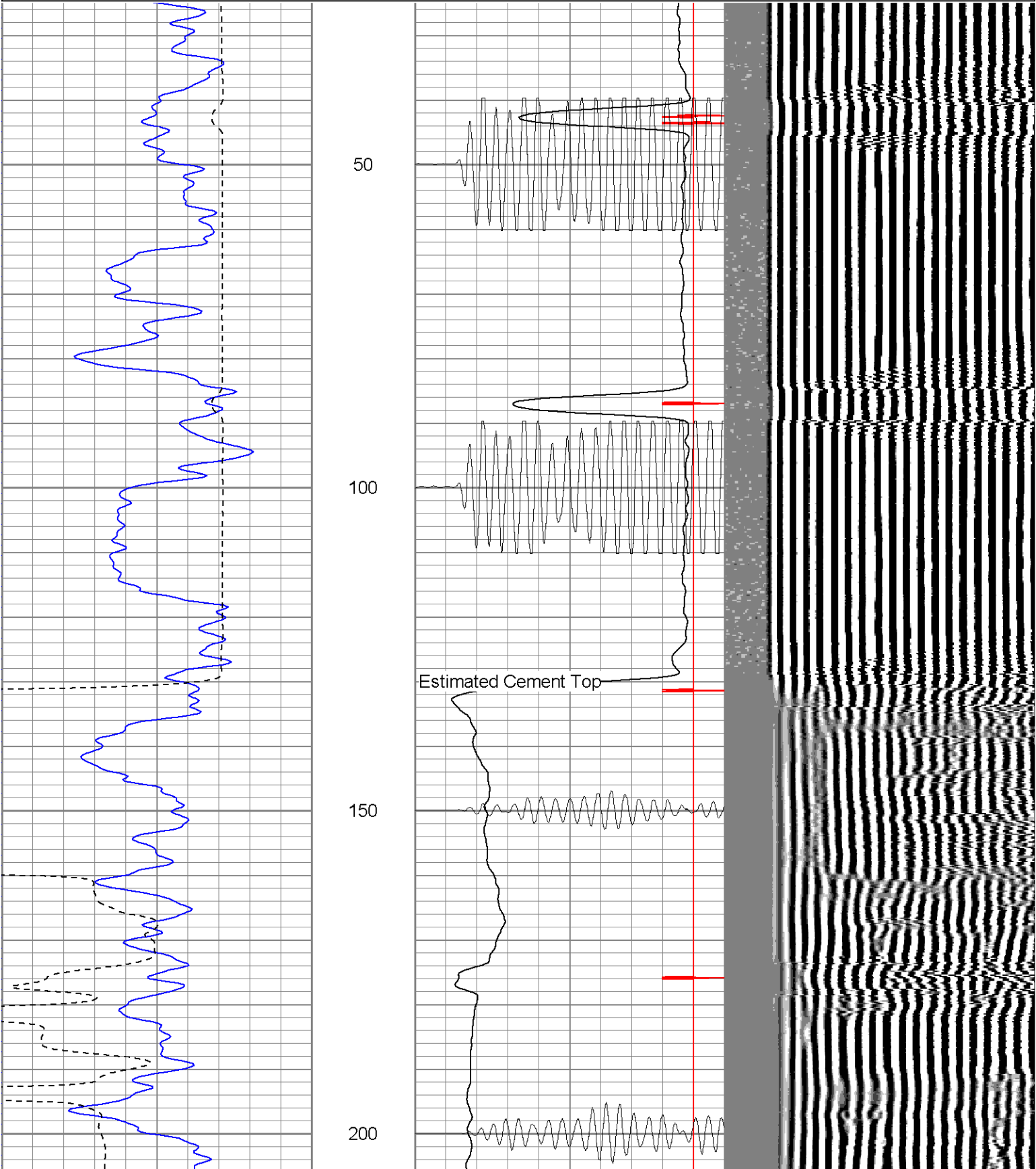
Main Pass ran under 1000 PSI
Repeat Section ran under 0 PSI

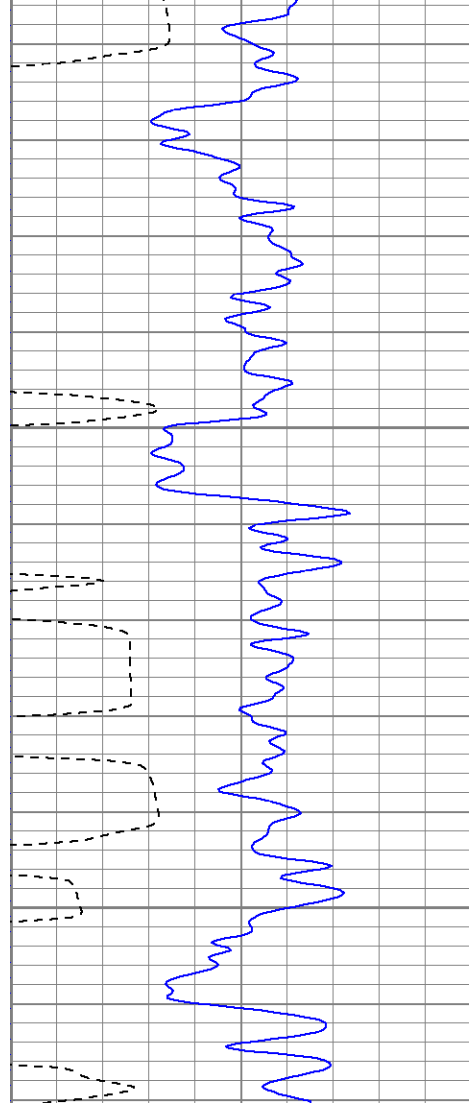
Patterson

Main Pass (1000 PSI)

Database File: ac060273106b.db
Dataset Pathname: pass2
Presentation Format: cblrt
Dataset Creation: Mon Jul 31 12:41:15 2006 by Log Open-Cased 060407
Charted by: Depth in Feet scaled 1:240

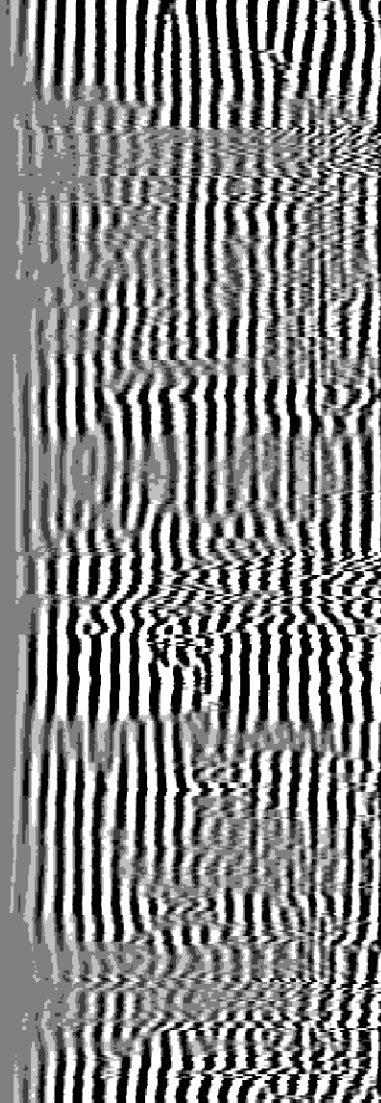
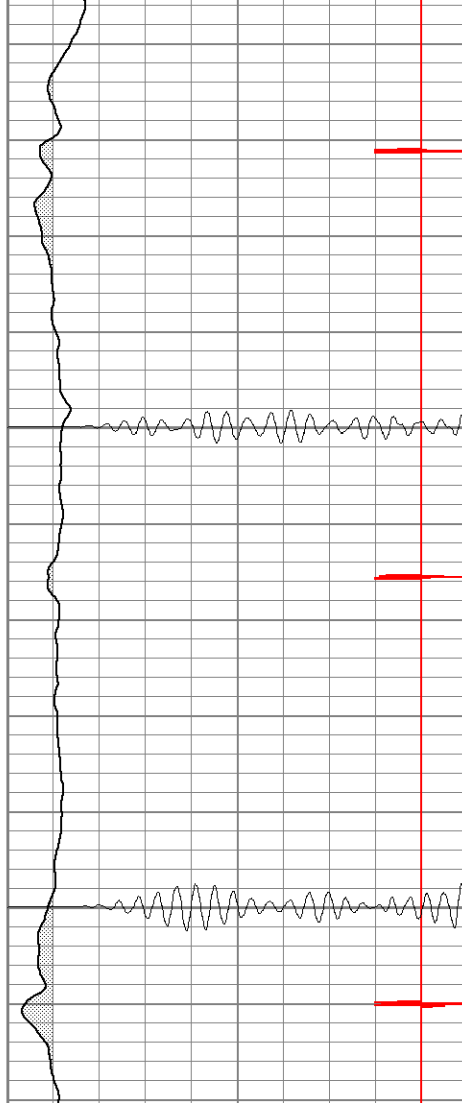
0	GR (GAPI)	200	0	AMP3 (mV)	100	200	Variable Density	1200
200	GR (GAPI)	400	18	CCL	-2			
400	TT3 (usec)	200	200	CBL5	1200			

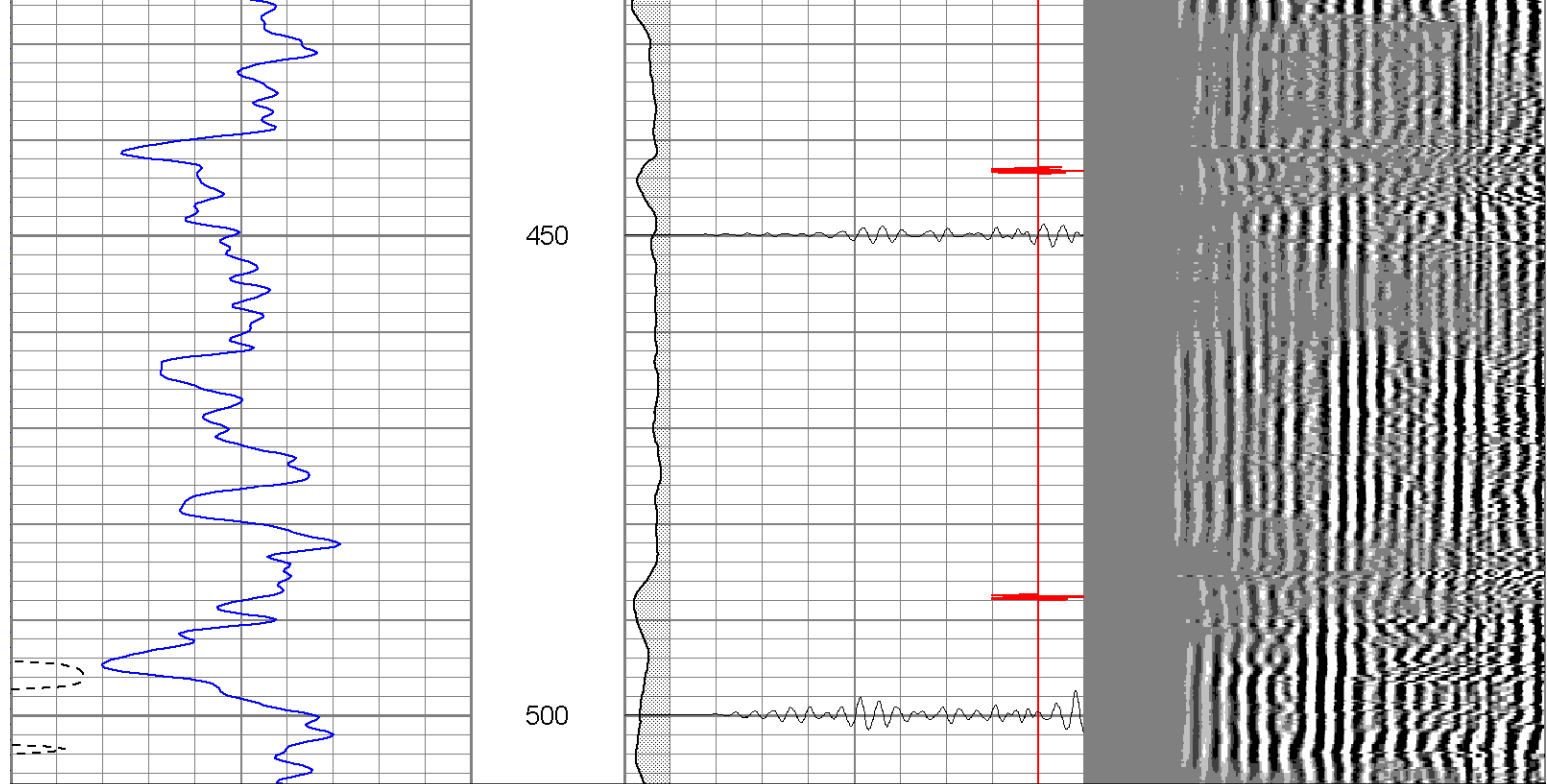


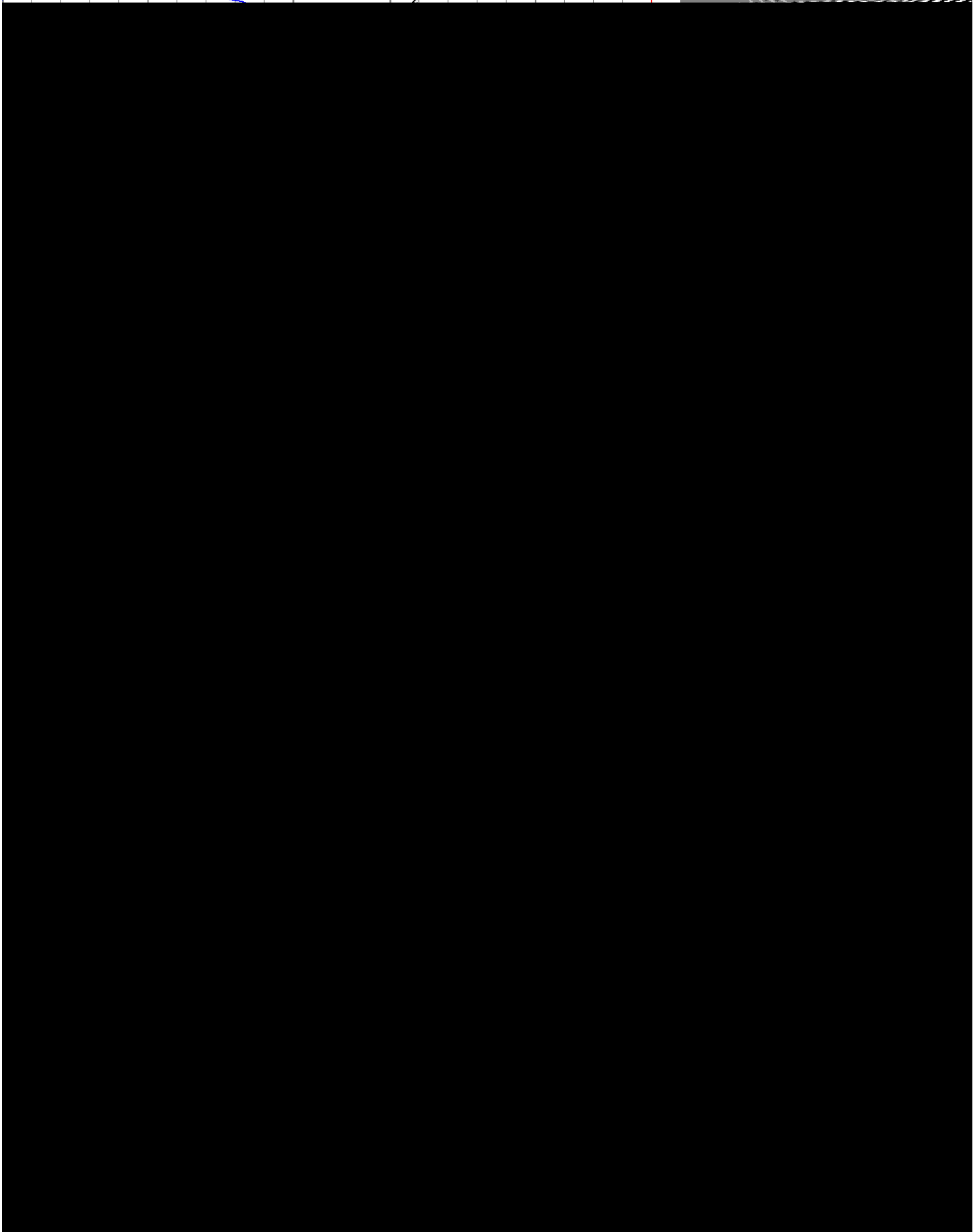


250

300



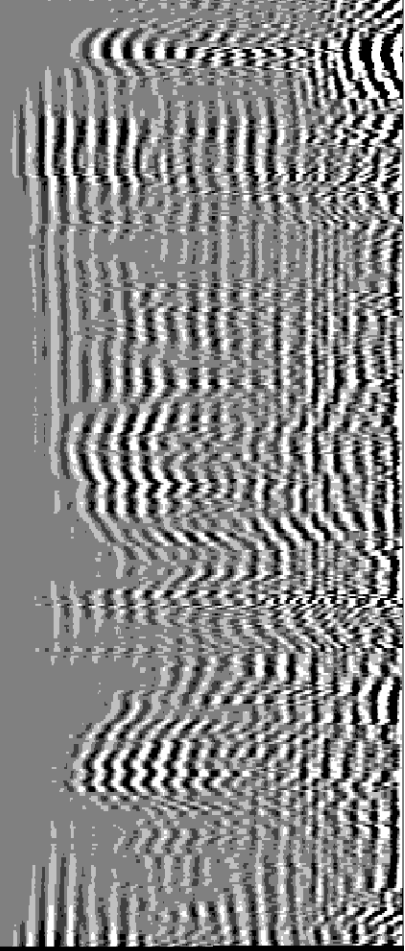
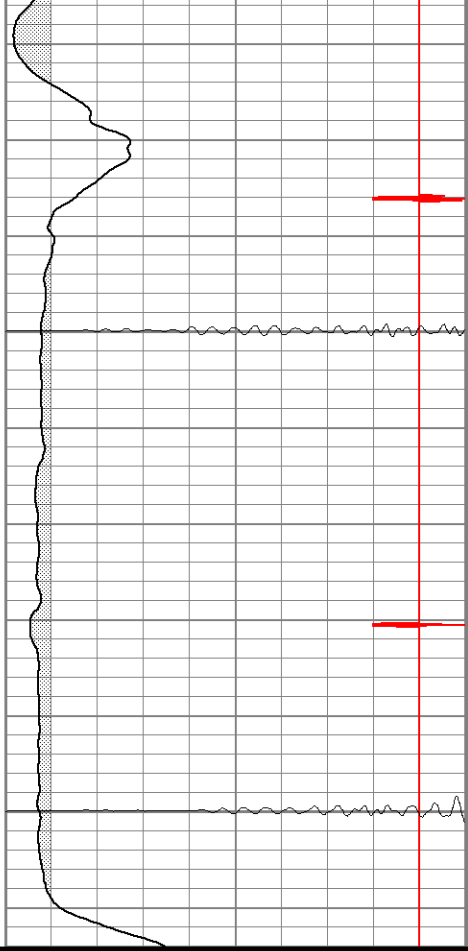


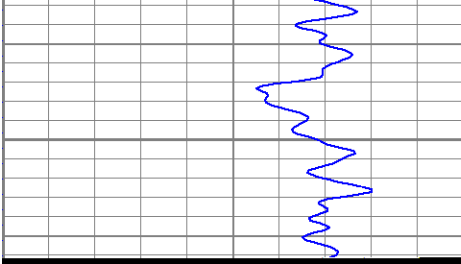




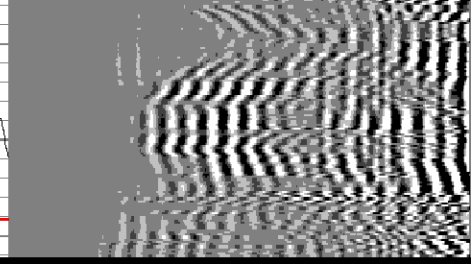
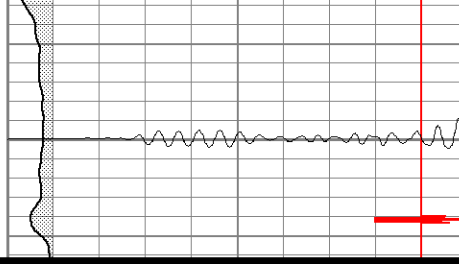
900

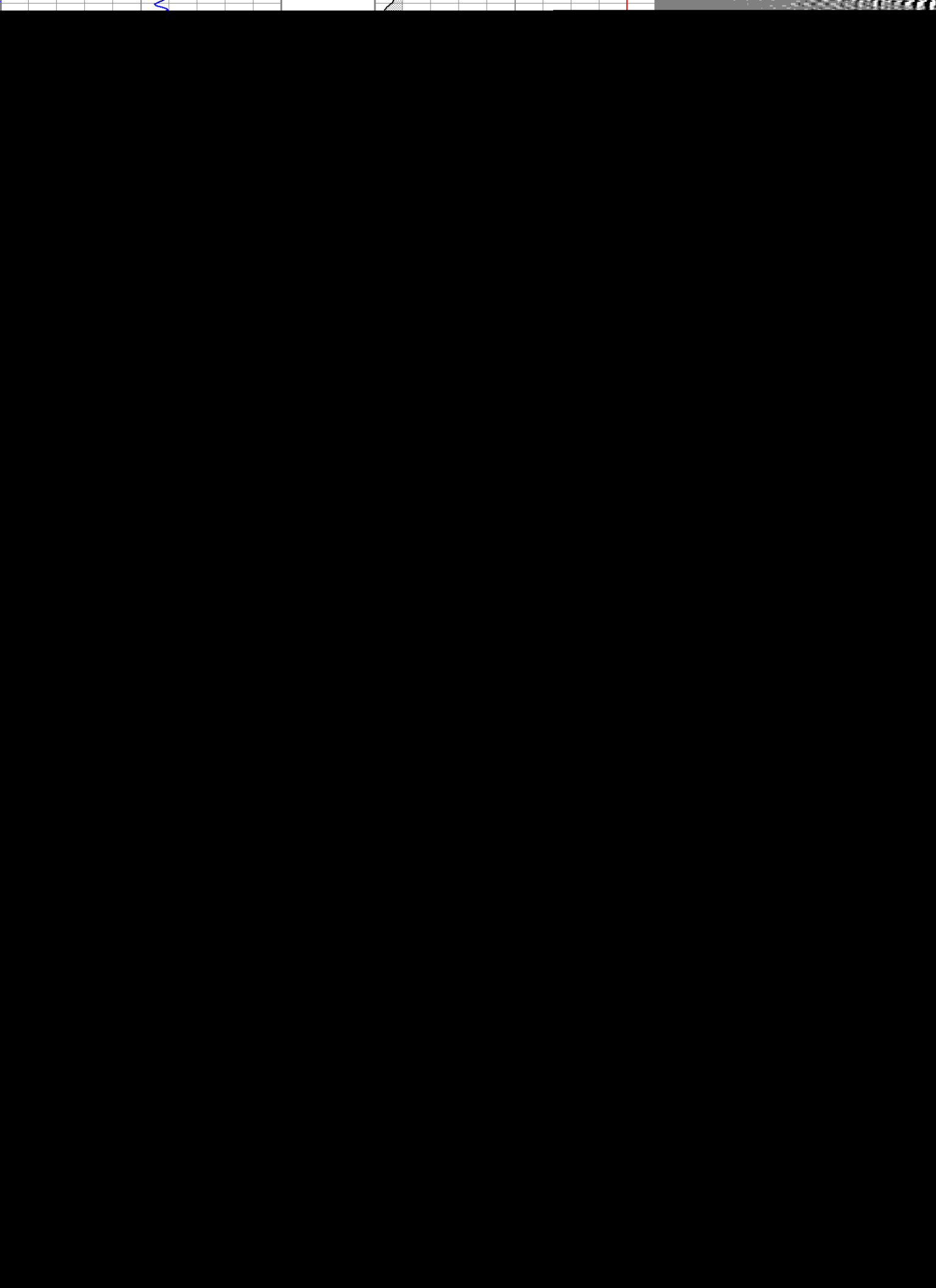
950





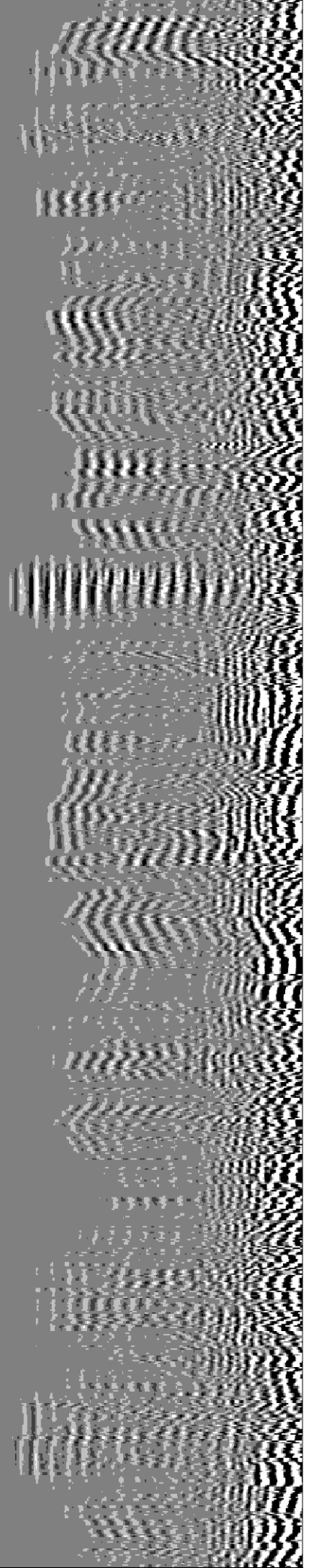
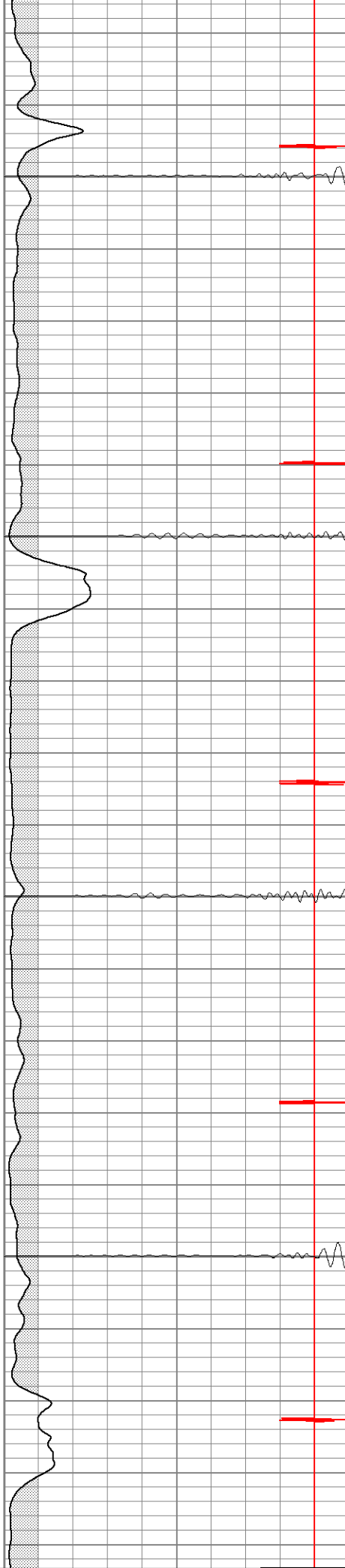
1100

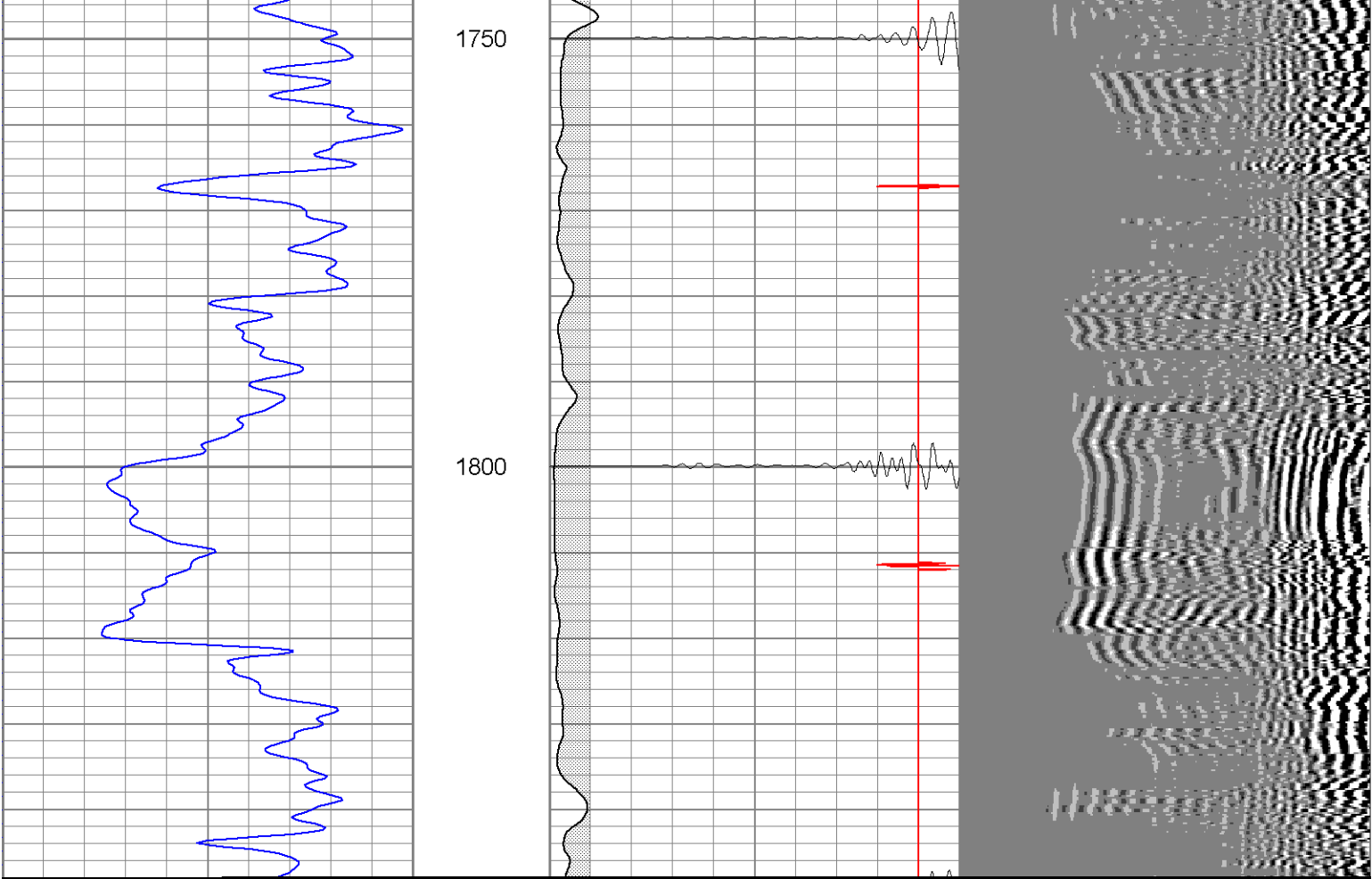


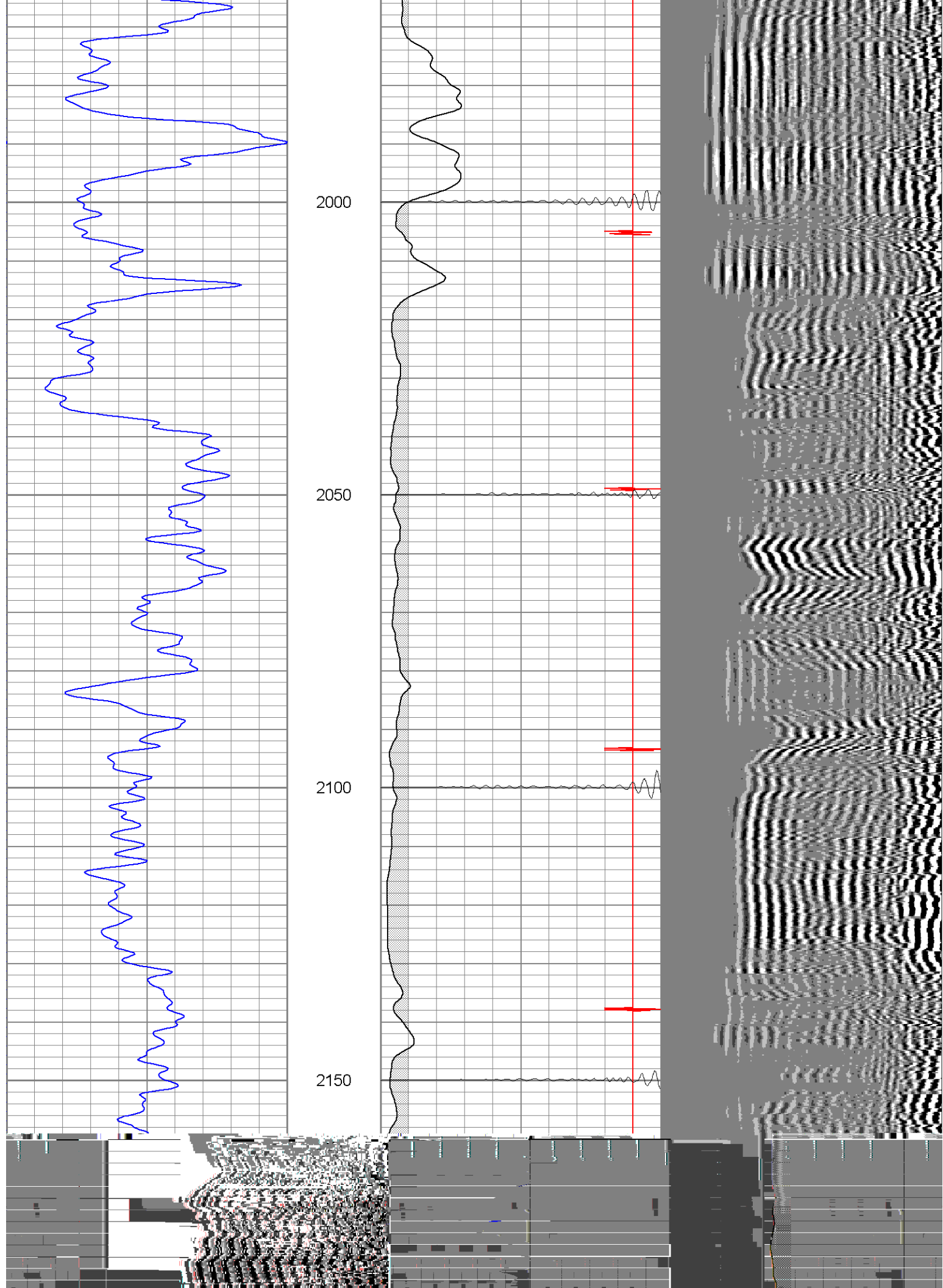


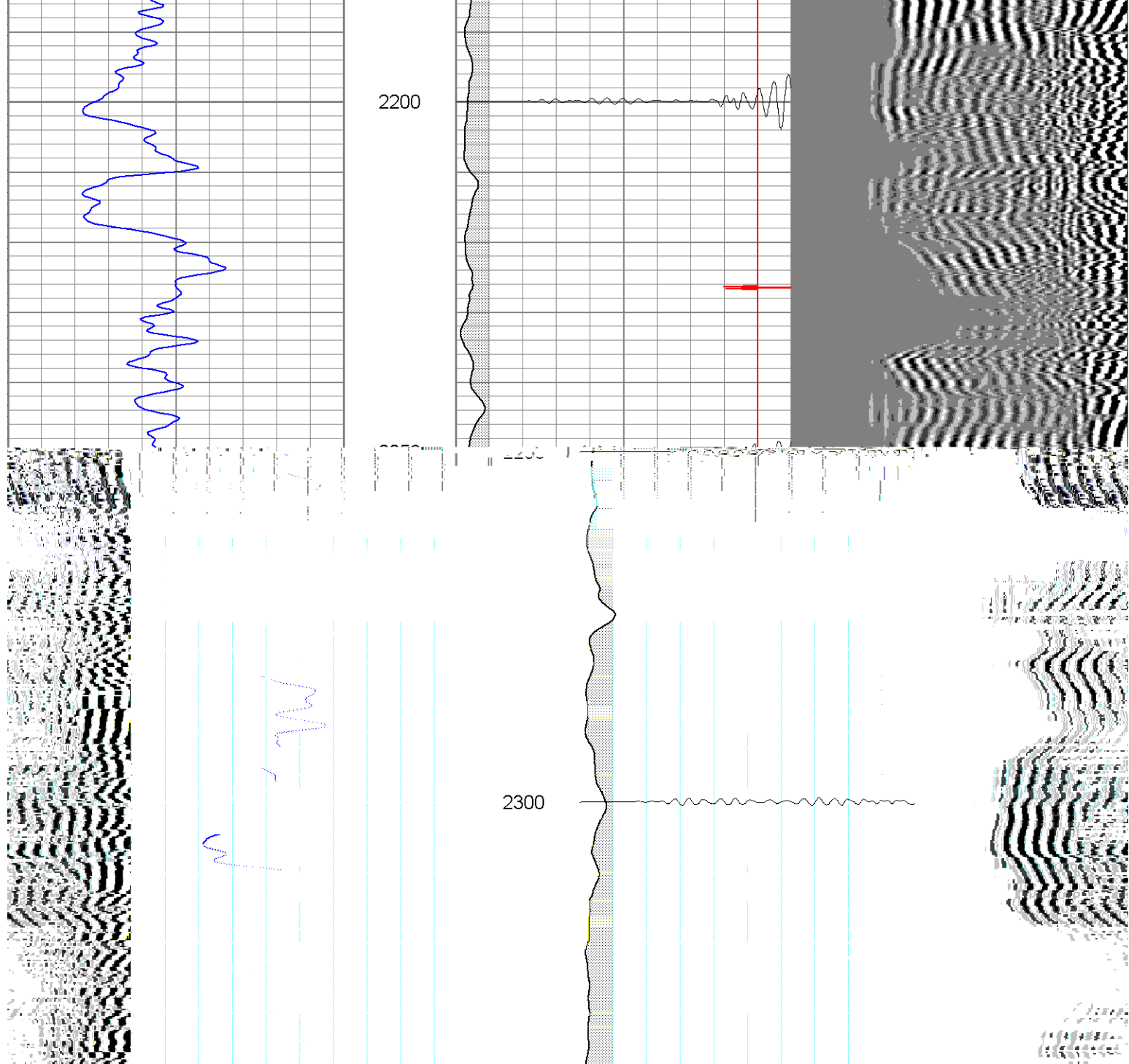


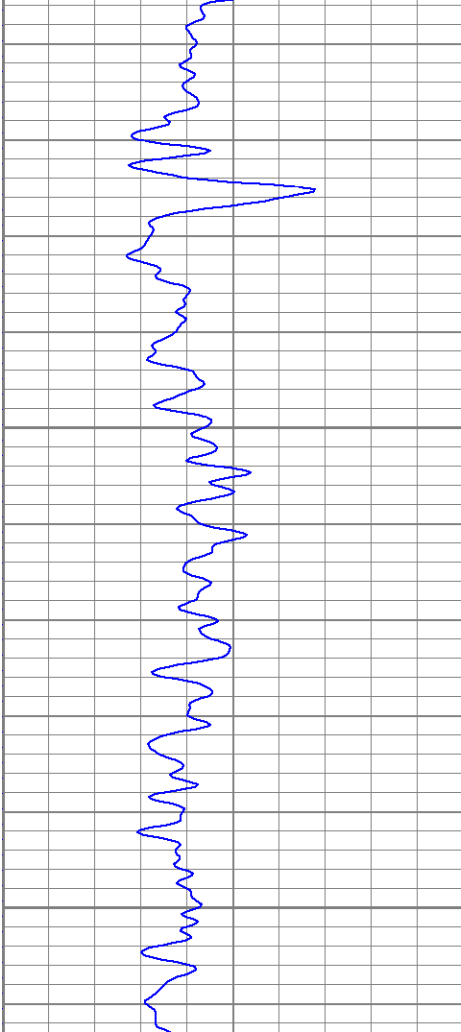
1550
1600
1650
1700





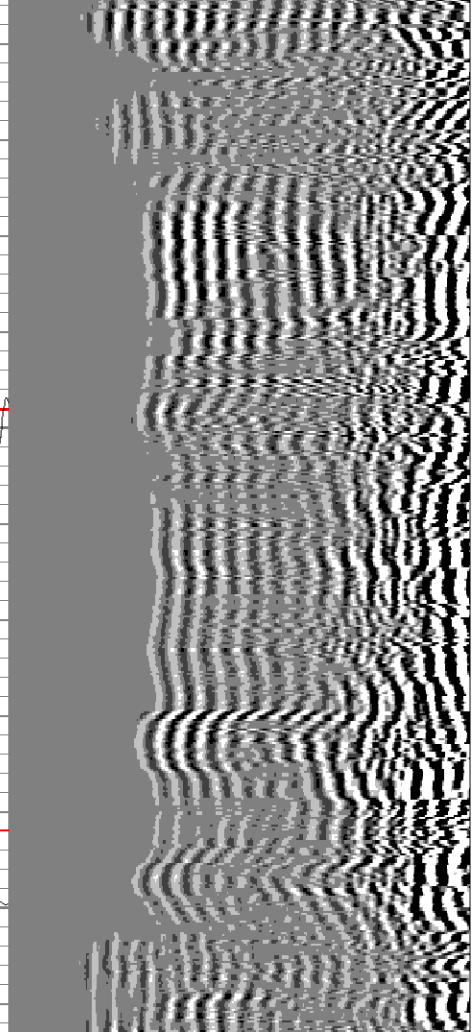






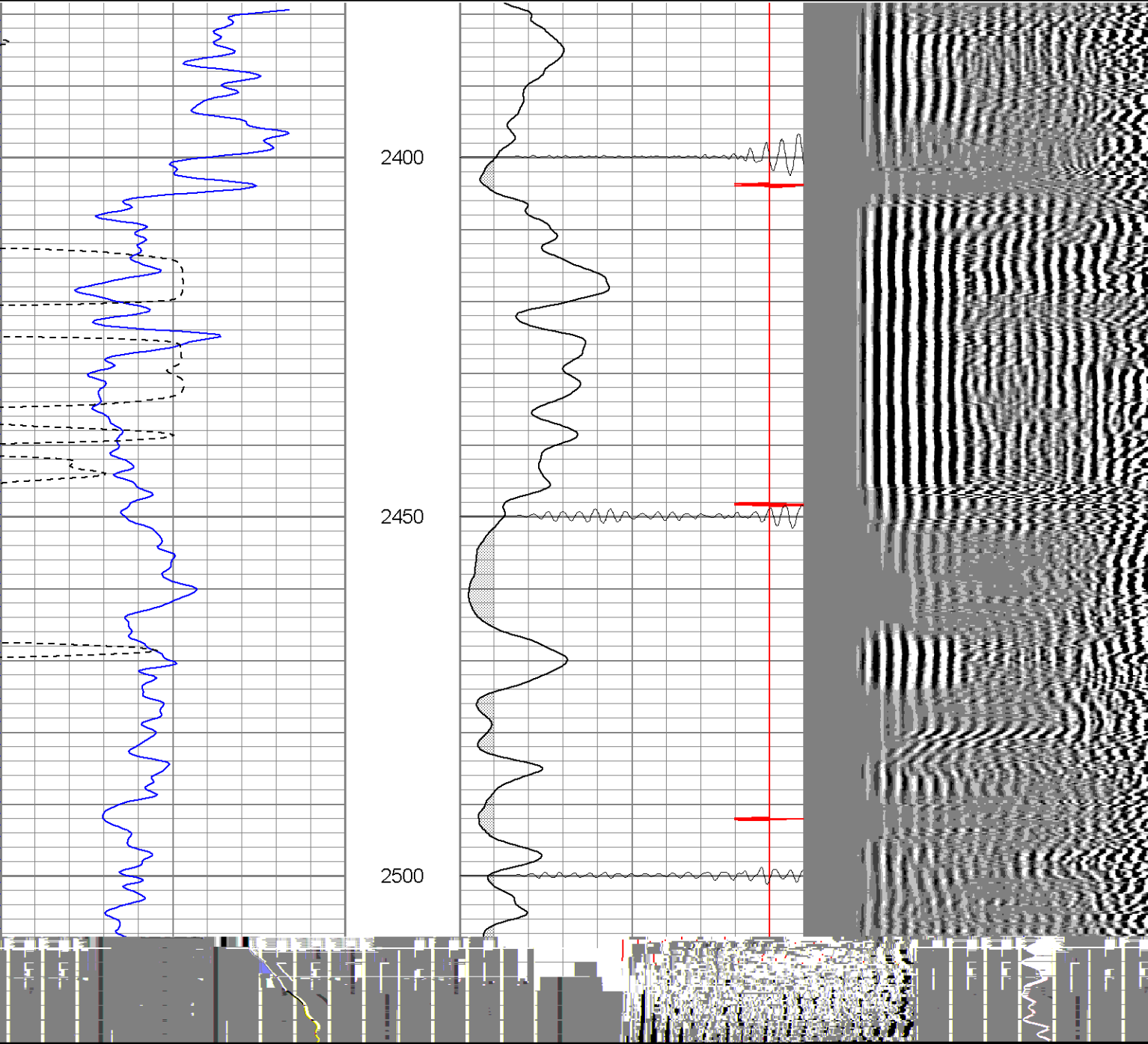
2450

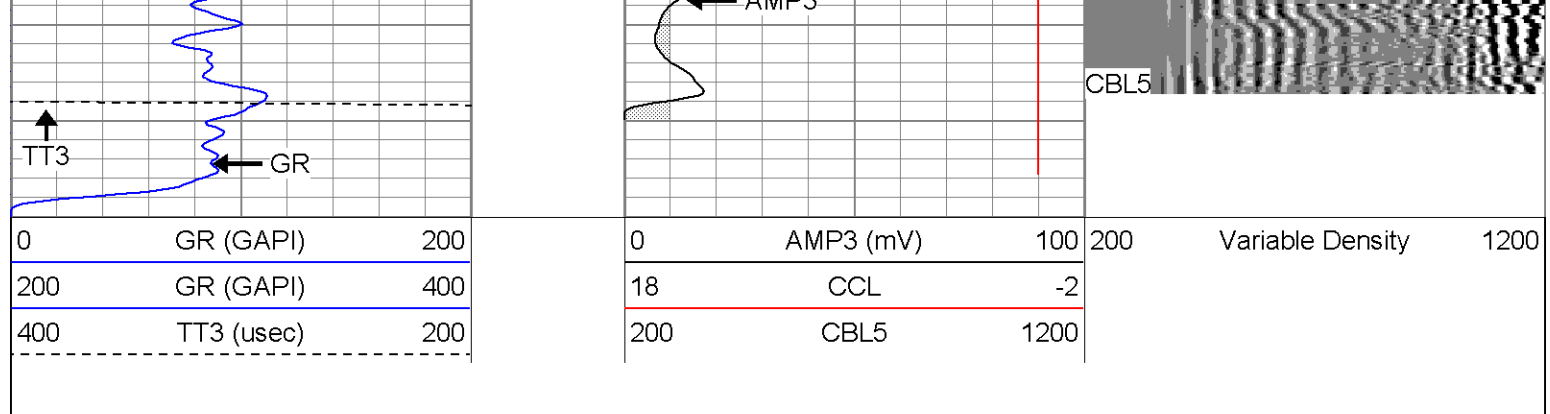
2500



Database File: ac060273106b.db
Dataset Pathname: pass1
Presentation Format: cblrt
Dataset Creation: Mon Jul 31 12:31:05 2006 by Log Open-Cased 060407
Charted by: Depth in Feet scaled 1:240

0	GR (GAPI)	200	0	AMP3 (mV)	100	200	Variable Density	1200
200	GR (GAPI)	400	18	CCL	-2			
400	TT3 (usec)	200	200	CBL5	1200			





Calibration Report

Database File: ac060273106b.db
 Dataset Pathname: pass1
 Dataset Creation: Mon Jul 31 12:31:05 2006 by Log Open-Cased 060407

Gamma Ray Calibration Report

Serial Number: Titan2.75
 Tool Model: 2.75
 Performed: Fri Jul 14 10:45:24 2006

Calibrator Value: 200.0 GAPI

Background Reading: 40.0 cps
 Calibrator Reading: 240.0 cps

Sensitivity: 1.1000 GAPI/cps

Cement Bond Log Calibration Report

Serial Number: Titan4
 Tool Model: 4
 Performed: Mon Jul 24 12:08:10 2006

Depth: 1054.62 ft
 Casing Diameter: 5.5 in

	3' Spacing	5' Spacing	
Signal Zero:	0	1	mV
Calibrated Amplitude:	85	85	mV
Reading at Signal Zero:	0.00161133	0.0143555	V
Reading in Free Pipe:	1.09	1.65081	V
Gain:	78.0971	51.3306	
Offset:	-0.12584	0.263125	

Sensor	Offset (ft)	Schematic	Description	Len (ft)	OD (in)	Wt (lb)
CHD	20.38		CHD-None (0)	0.75	1.50	5.00
CENT	19.63		CENT-X (2)	3.00	1.69	25.00
WVF5	12.82		CBL-4 (Titan4)	8.15	2.25	110.00
WVF3	11.82					
CENT	8.48		CENT-X (4)	2.00	1.69	25.00

