

**Patterson**

**DUAL  
INDUCTION  
LOG**

Company XTO Energy, Inc.  
Well Hill Ranch 35-05  
Field Purgatoire River  
County Las Animas State CO

Location:	API # : 05 071 08801 00	Other Services CDL NEUTON
SEC 35 TWP 34S RGE 67W		
Permanent Datum	Ground Level	Elevation 7895'
Log Measured From	Ground Level	
Drilling Measured From	Ground Level	

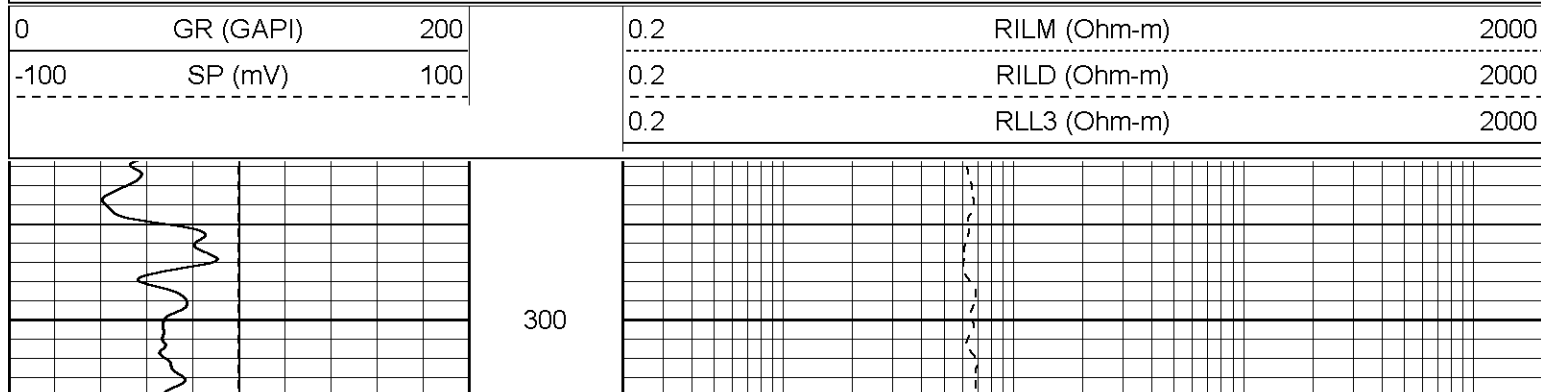
Company XTO Energy, Inc.  
Well Hill Ranch 35-05  
Field Purgatoire River  
County Las Animas  
State CO

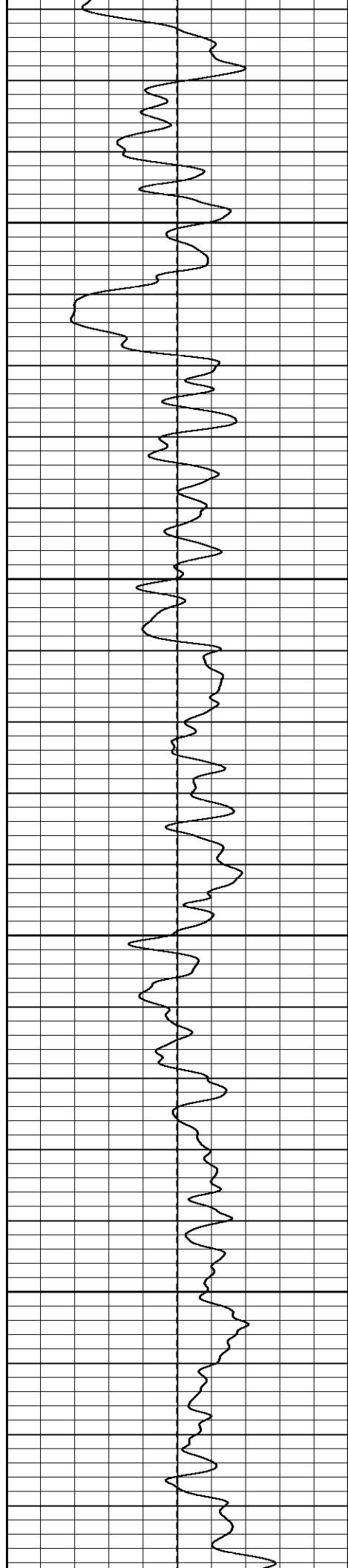
Date	9-13-06		
Run Number	One		
Depth Driller	2500'		
Depth Logger	2491'		
Bottom Logged Interval	2489'		
Top Log Interval	Surface Casing 8 5/8" @ 316'		
Casing Driller			
Casing Logger	320'		
Bit Size	7 7/8"		
Type Fluid in Hole	Water		
Density / Viscosity	///		
pH / Fluid Loss	///		
Source of Sample	///		
Rm @ Meas. Temp	///		
Rmf @ Meas. Temp	///		
Rmc @ Meas. Temp	///		
Source of Rmf / Rmc	///		
Rm @ BHT	///		
Time Circulation Stopped	2:30 A.M.		
Time Logger on Bottom	10:00 A.M.		
Maximum Recorded Temperature	113 DEG F		
Equipment Number	T720		
Location	Trinidad		
Recorded By	M. Norton		
Witnessed By	Mr. Don Johnson		

<<< Fold Here >>>

All interpretations are opinions based on inferences from electrical or other measurements and we cannot and do not guarantee the accuracy or correctness

Database File: xtohr3505.db  
Dataset Pathname: pass2.1  
Presentation Format: dil  
Dataset Creation: Wed Sep 13 12:32:30 2006 by Calc Warrior 7.0 STD Ope  
Charted by: Depth in Feet scaled 1:240



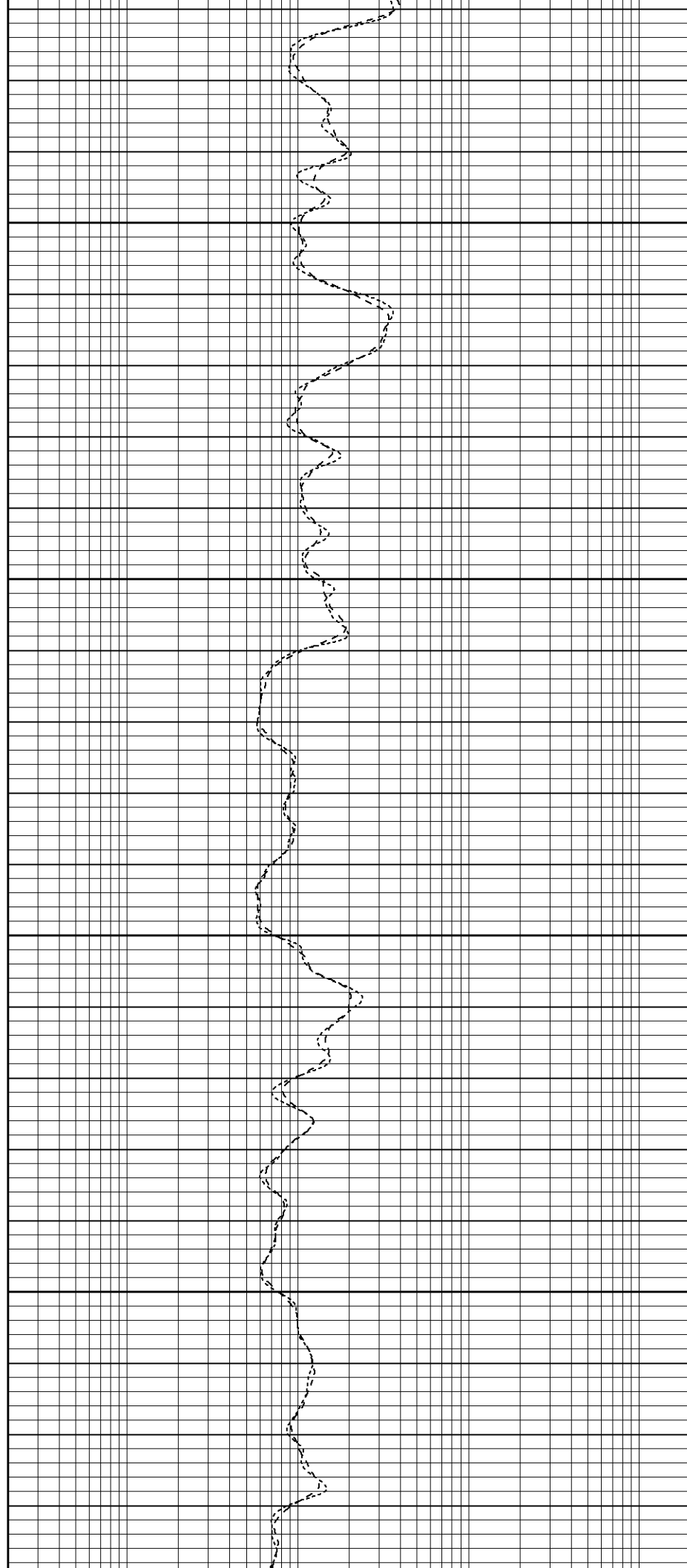


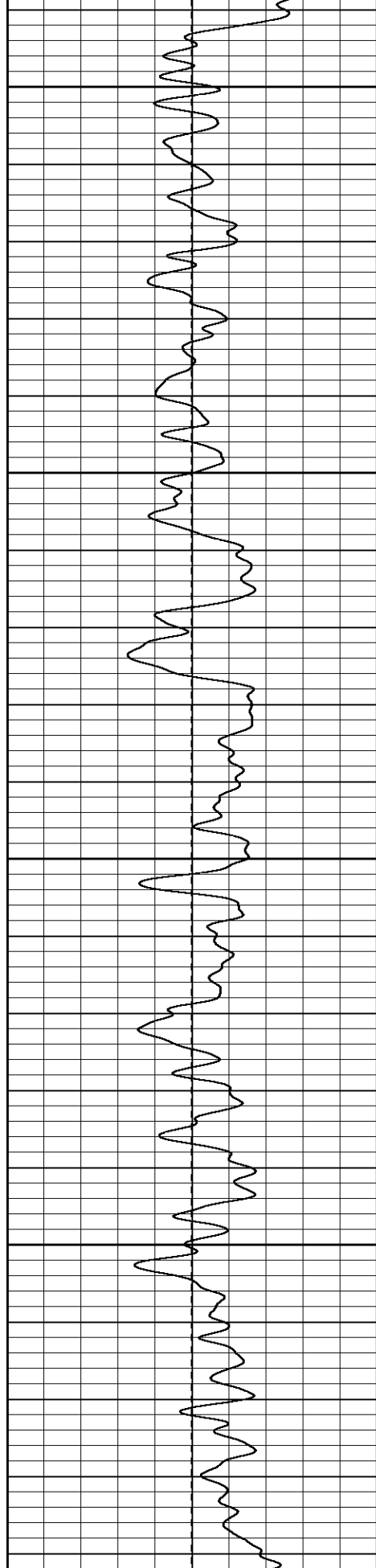
500

550

600

650



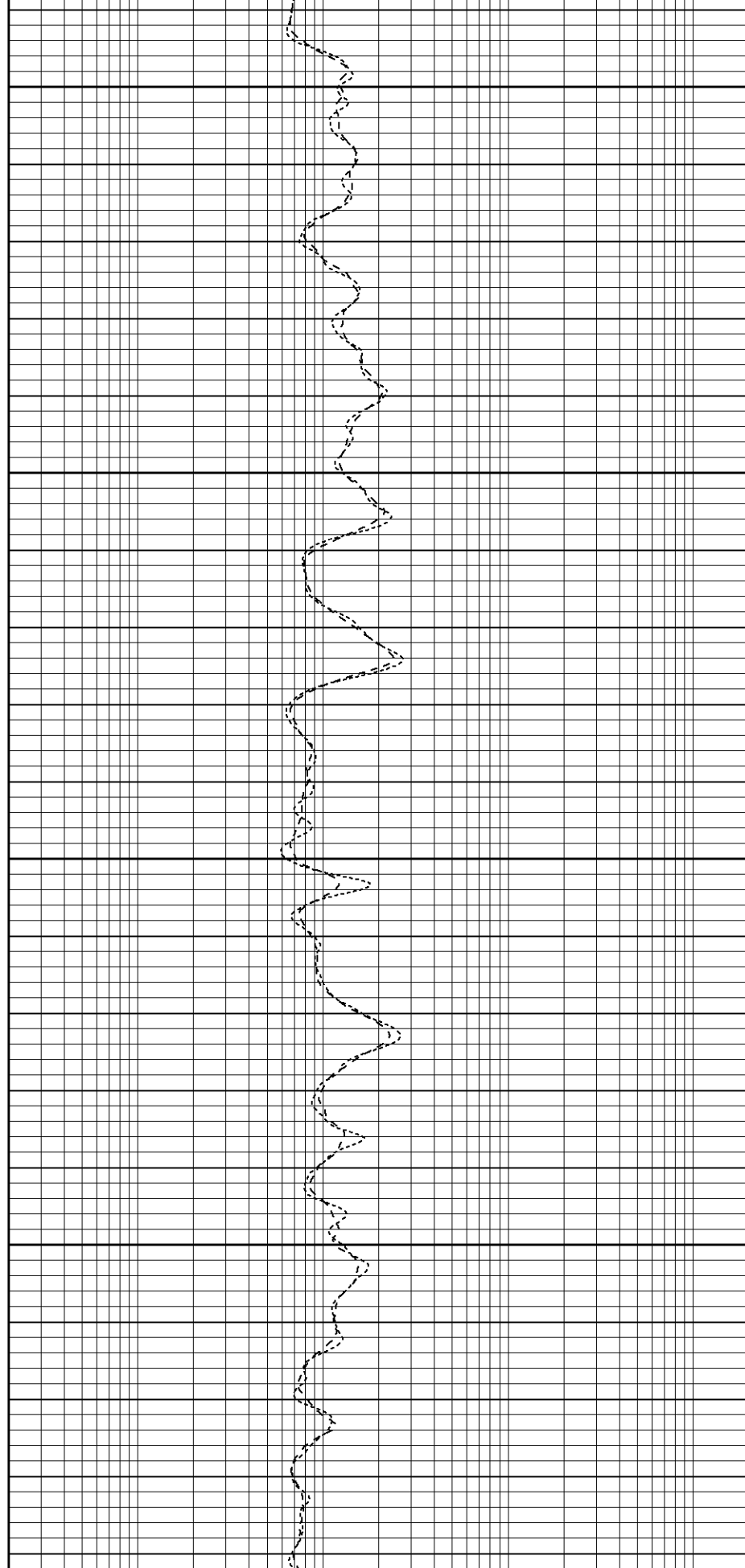


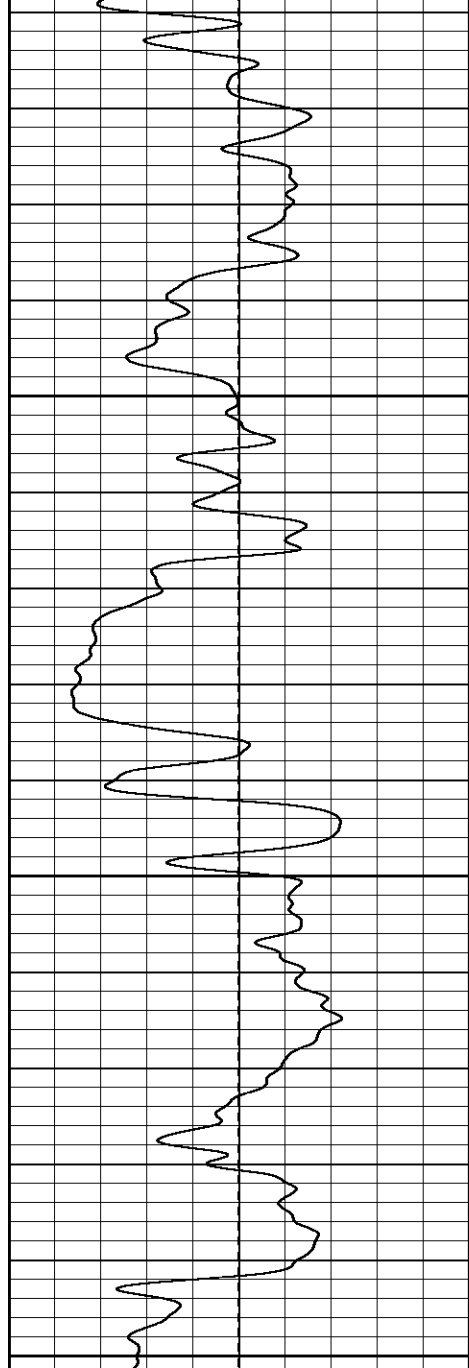
700

750

800

850

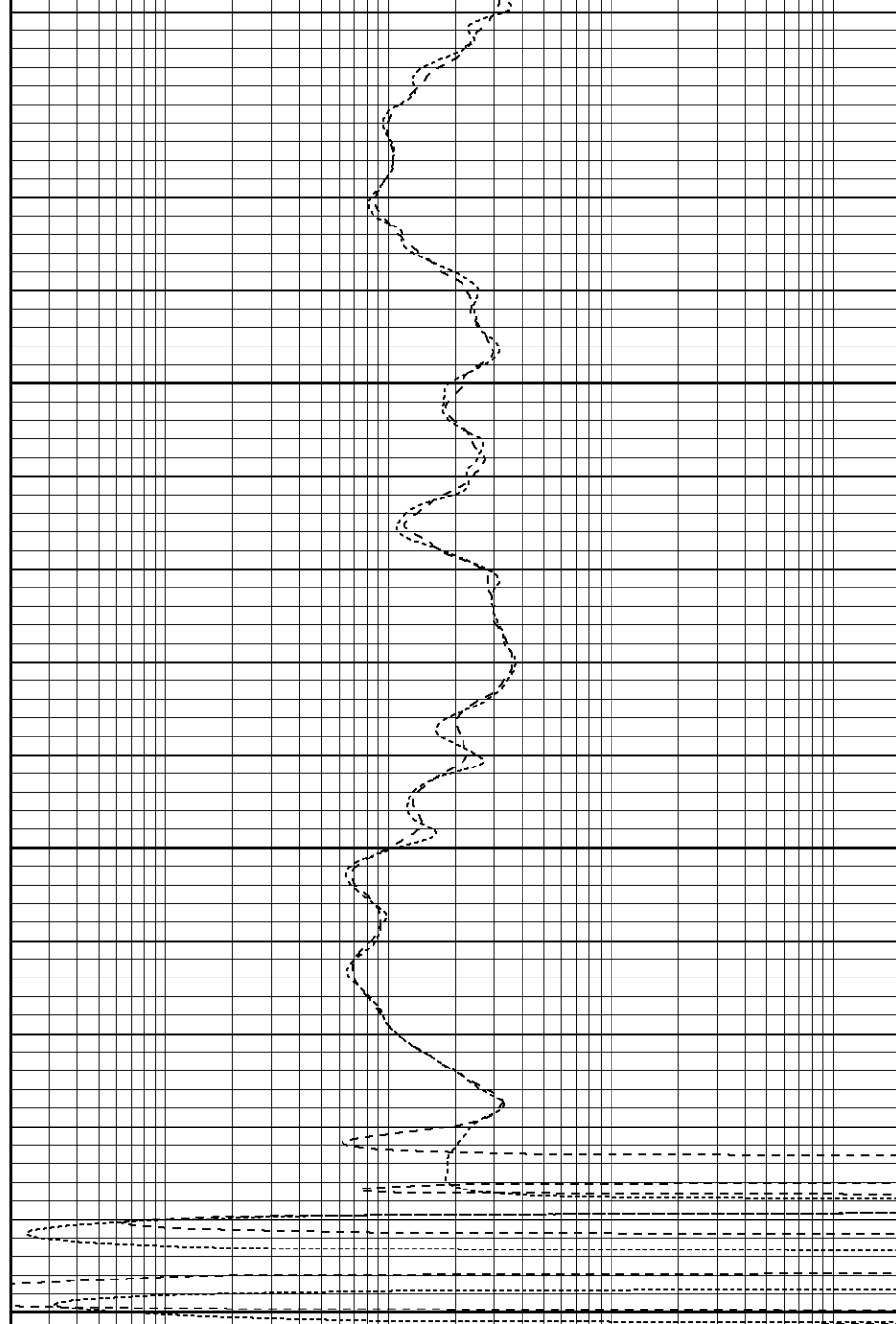


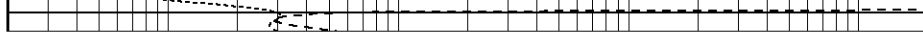


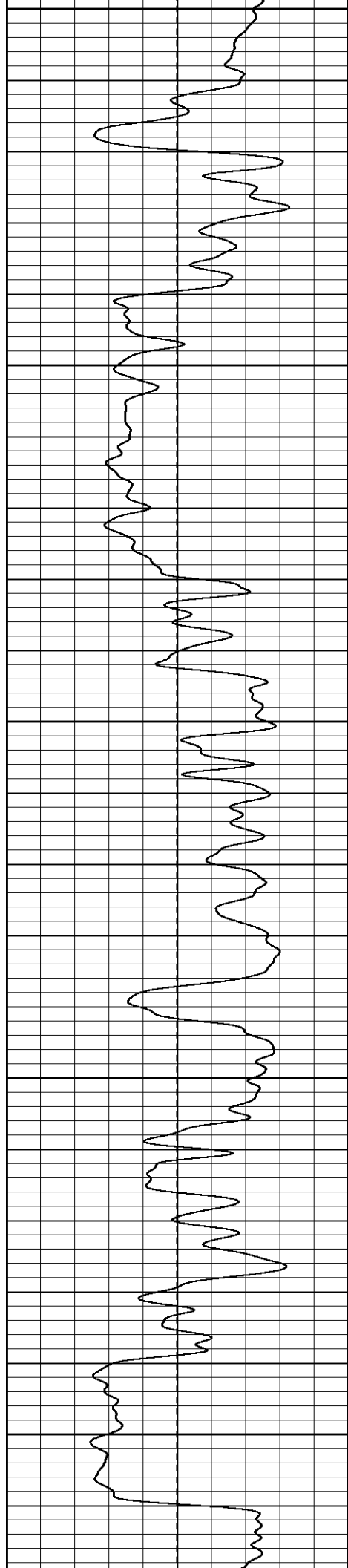
950

1000

1050







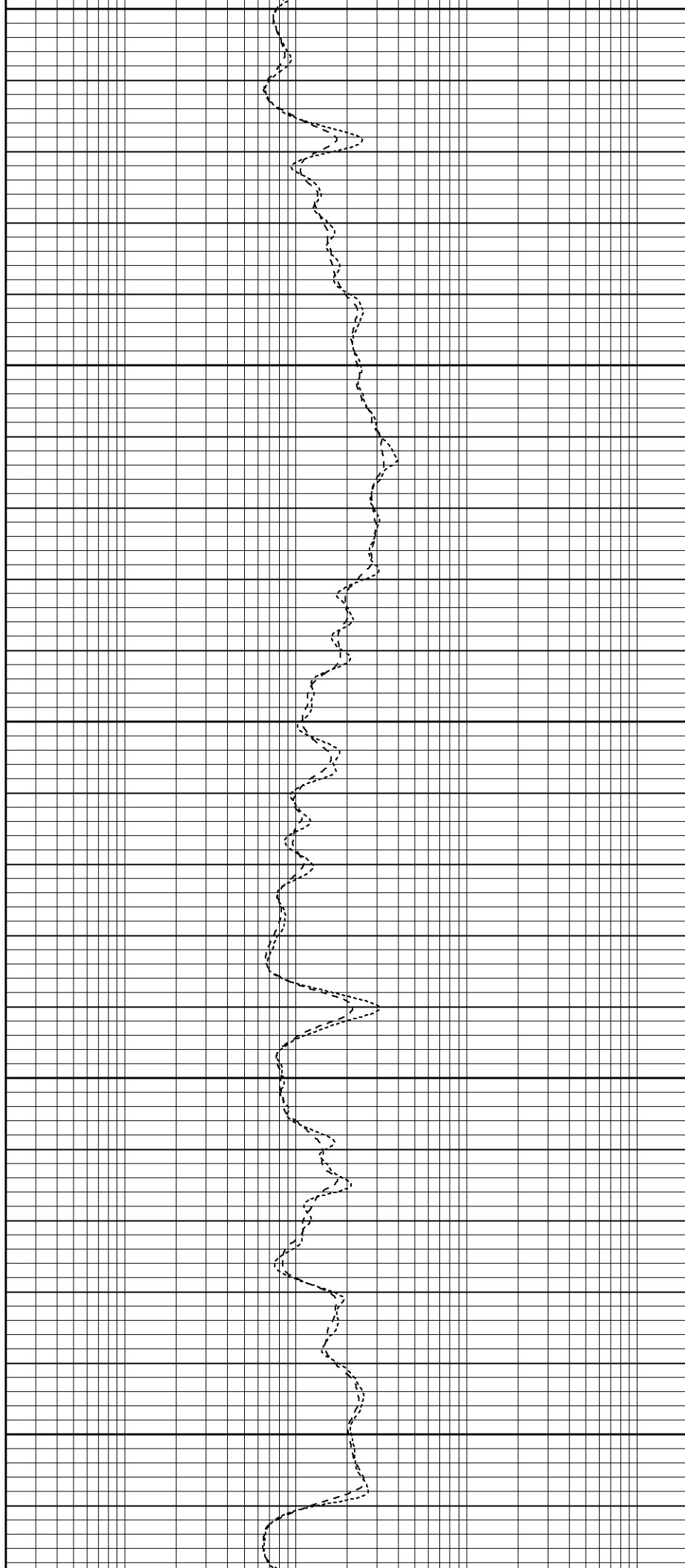
1350

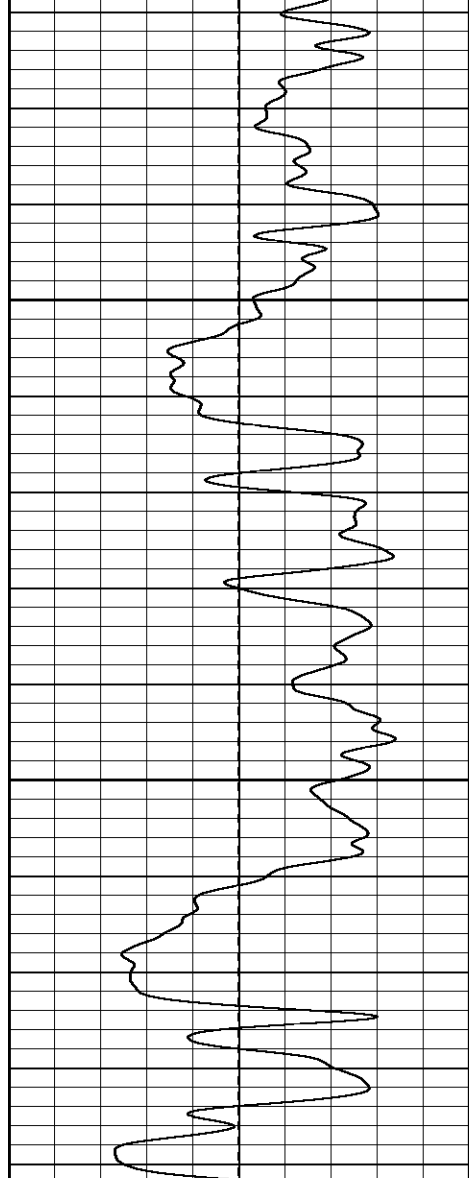
1400

1450

1500

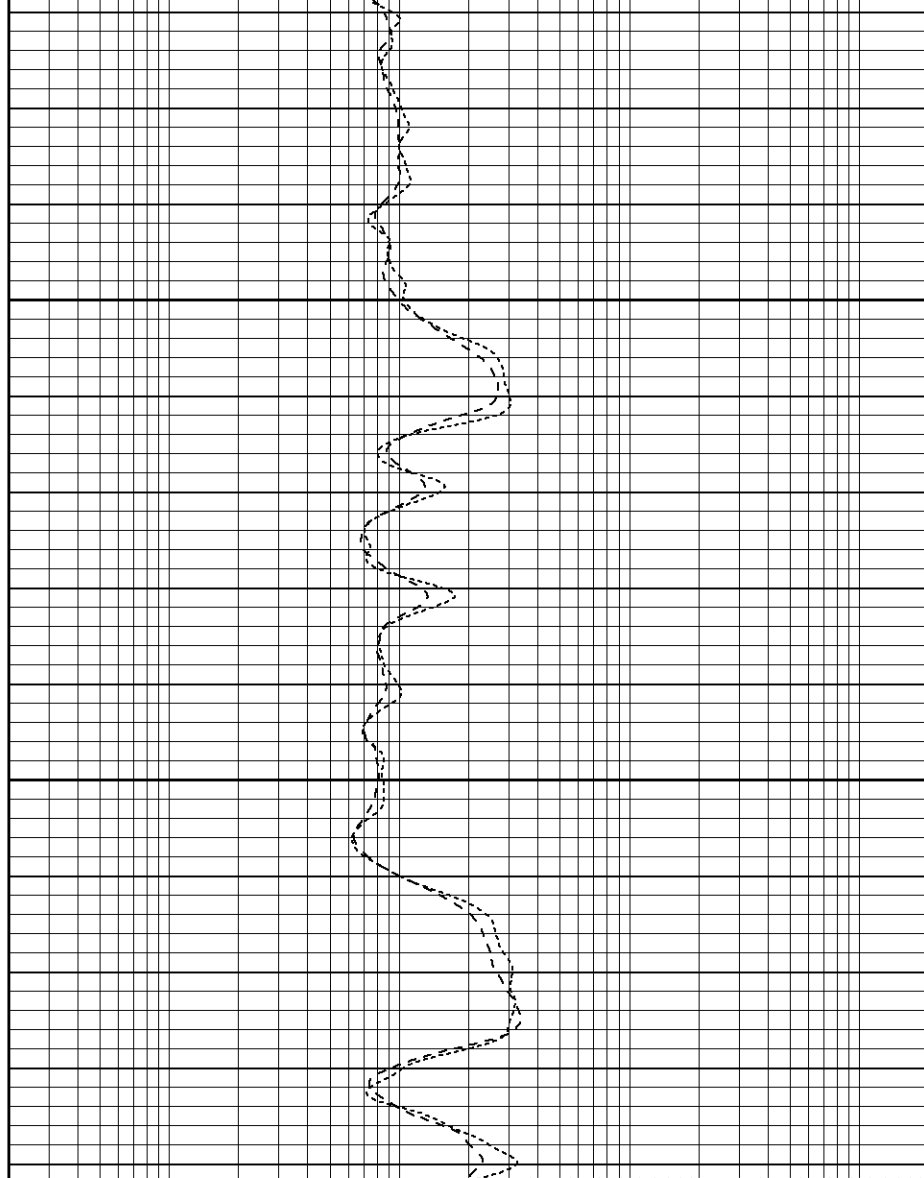
1550



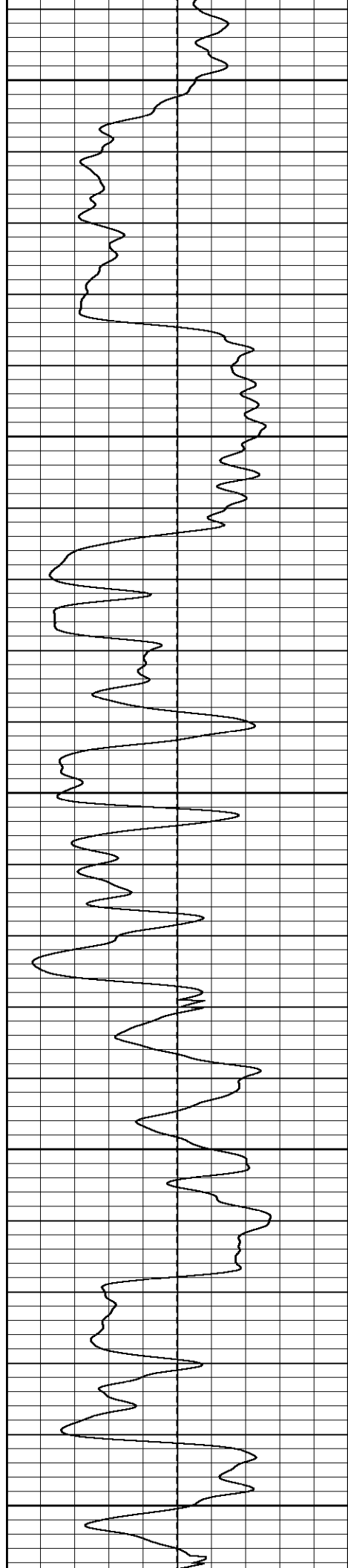


1600

1650







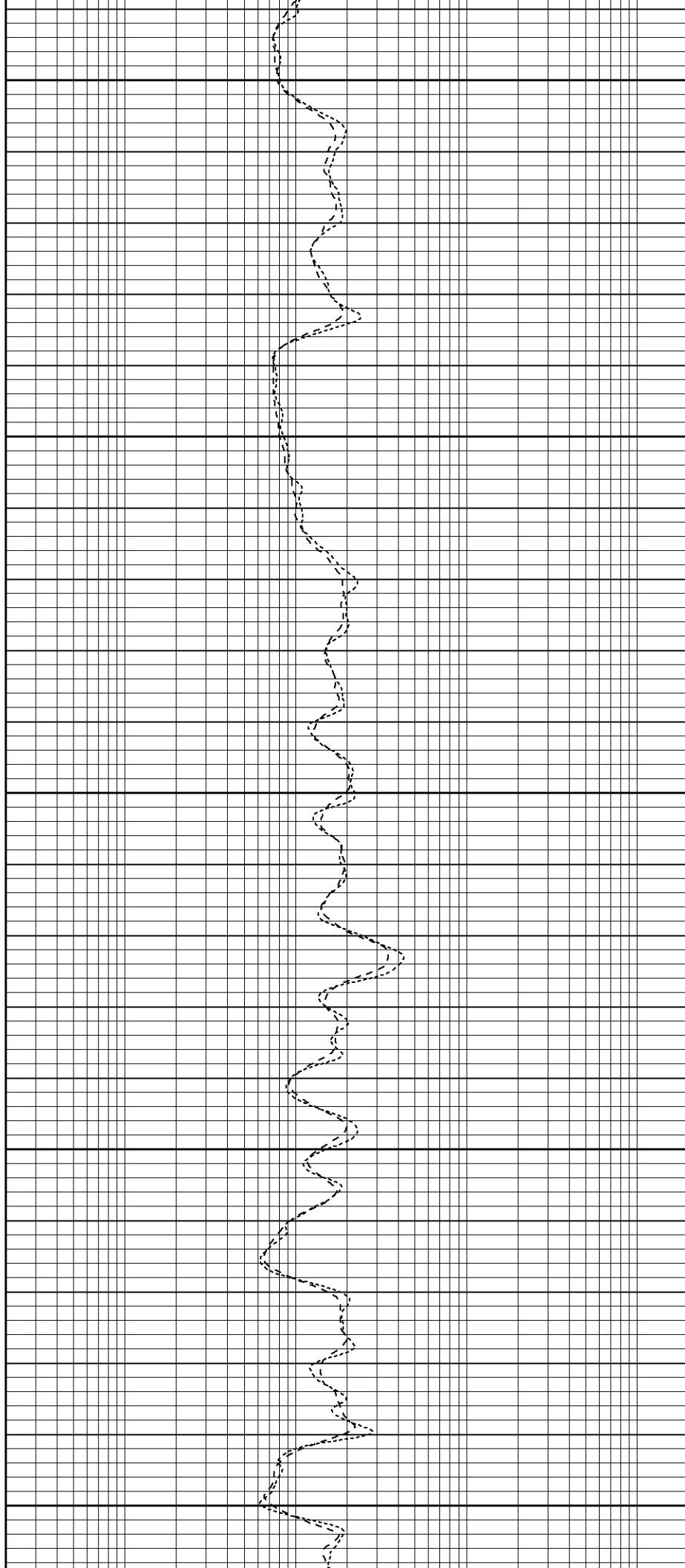
1800

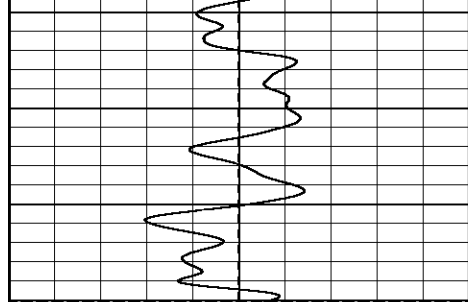
1850

1900

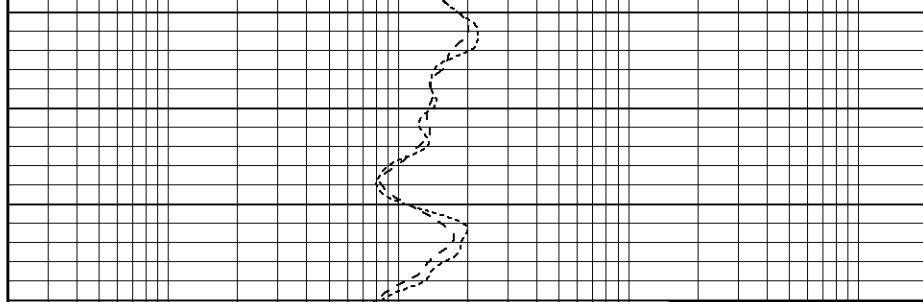
1950

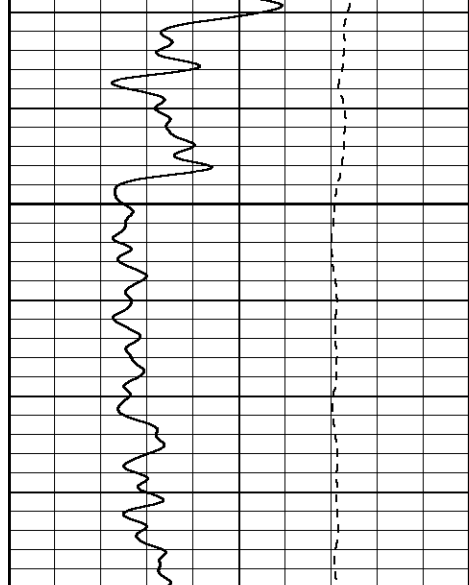
2000



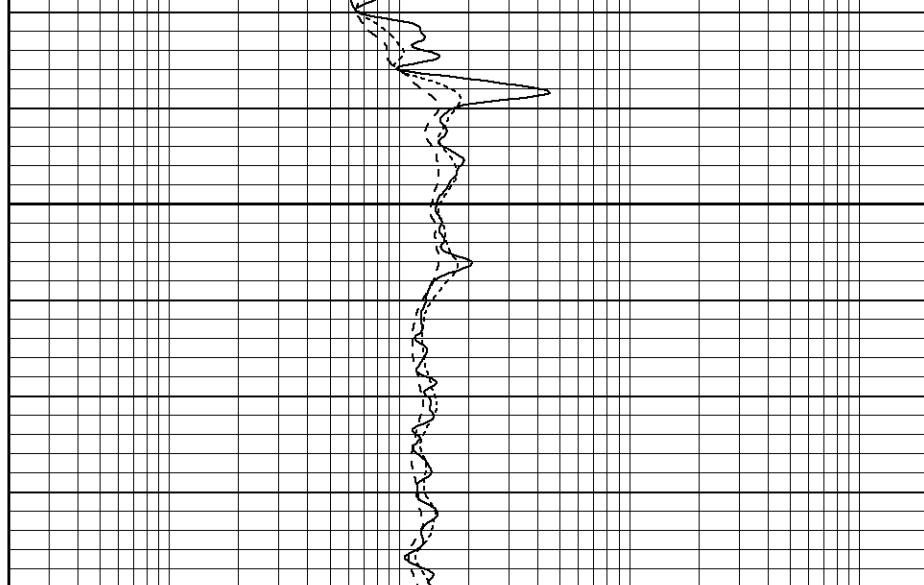


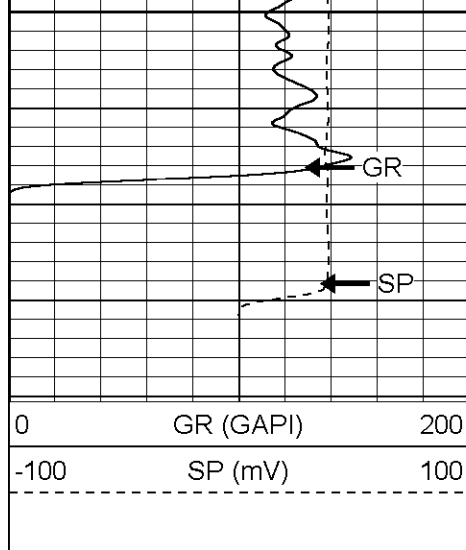
Fluid Level



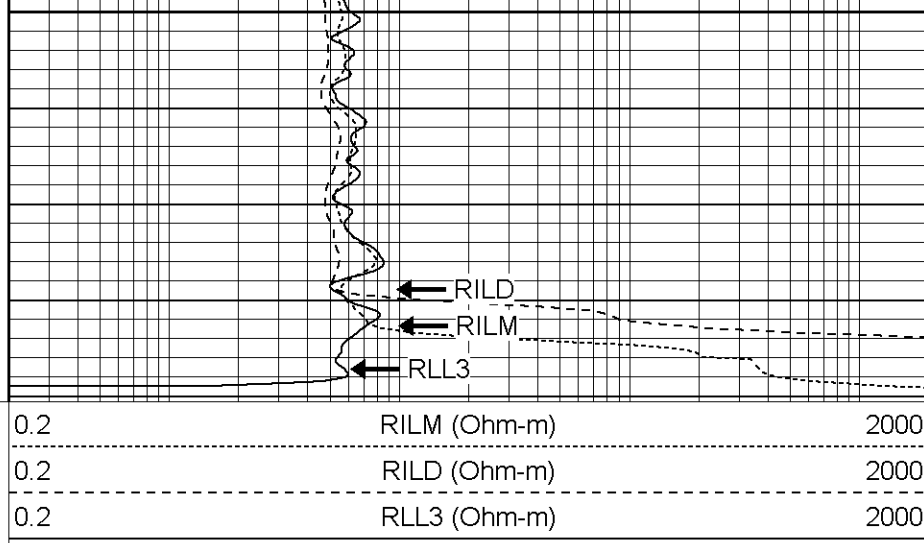


2250





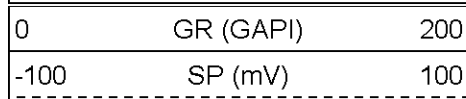
2450



**Patterson**

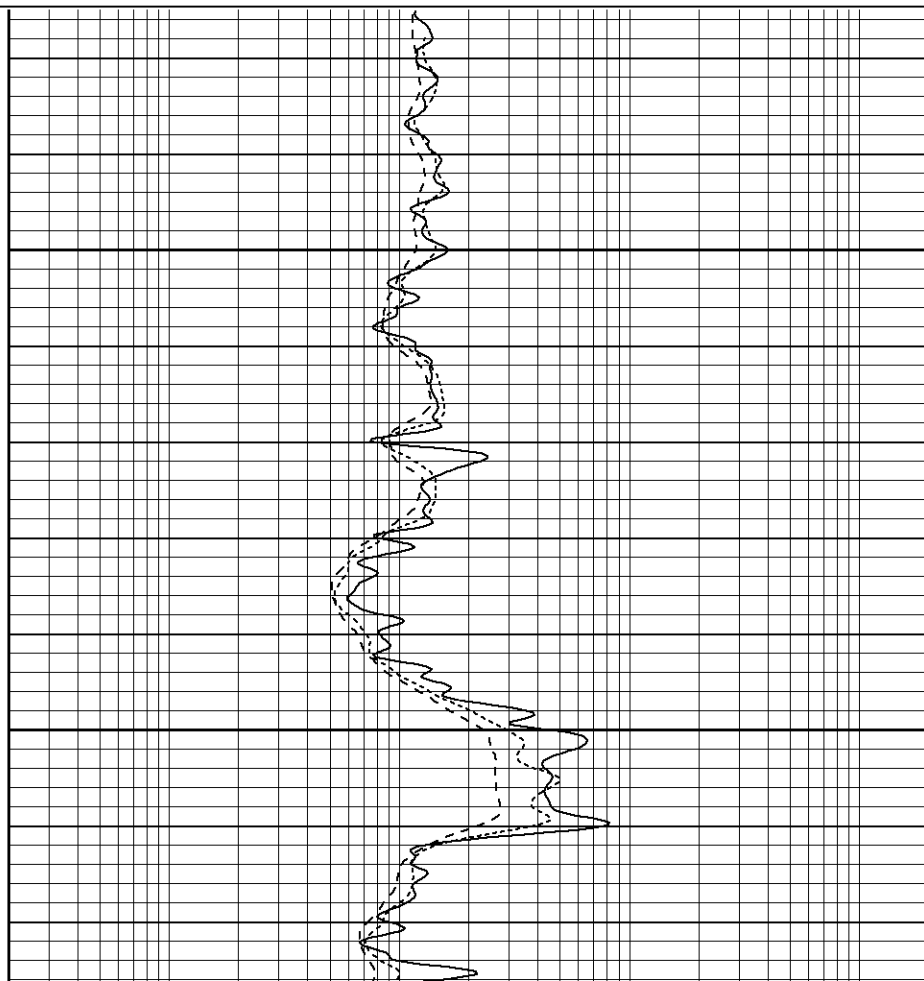
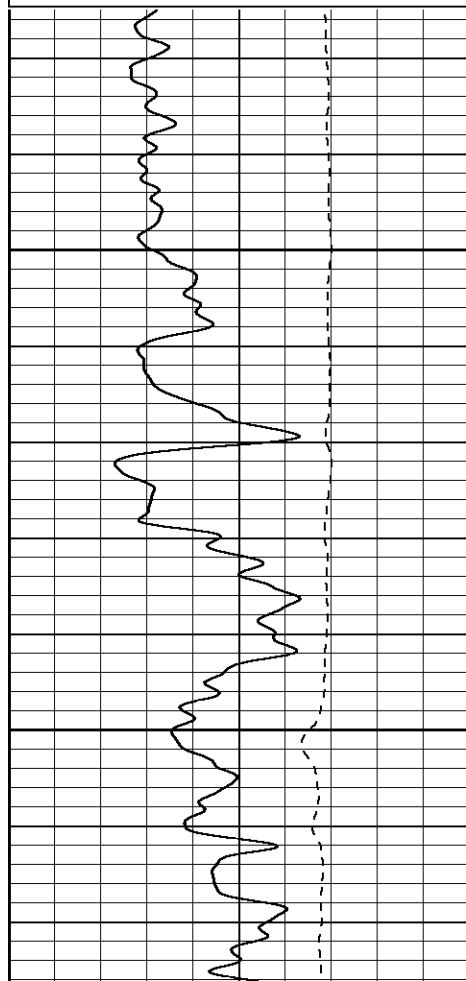
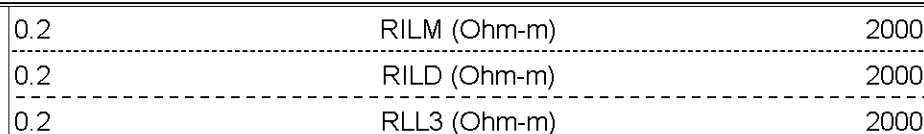
## Repeat Section

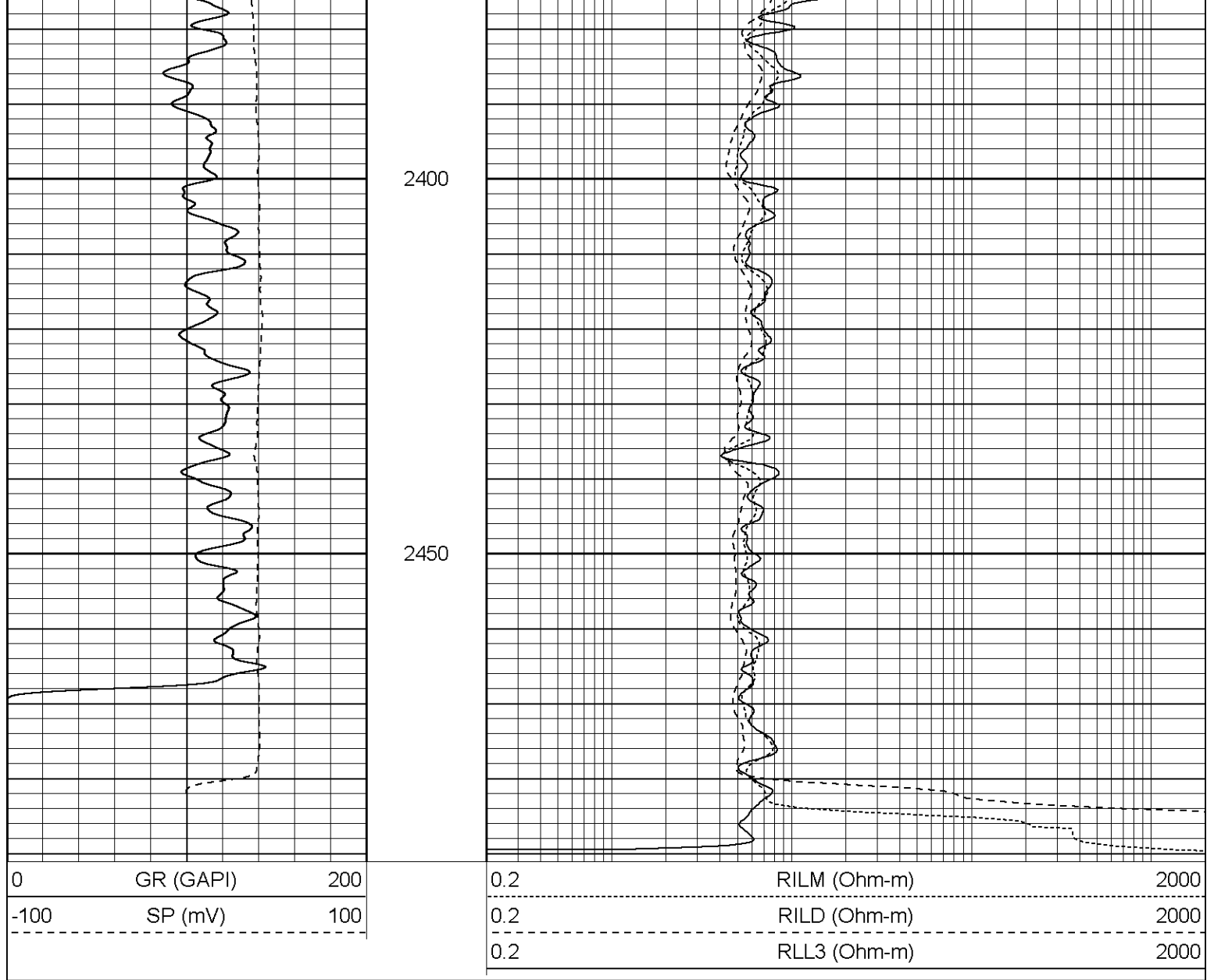
Database File: xtohr3505.db  
 Dataset Pathname: pass1.1  
 Presentation Format: dil  
 Dataset Creation: Wed Sep 13 12:31:55 2006 by Calc Warrior 7.0 STD Ope  
 Charted by: Depth in Feet scaled 1:240



2300

2350





Dual Induction Calibration Report									
Serial-Model:				5375-G					
Surface Cal Performed:				Mon Aug 14 08:21:41 2006					
Downhole Cal Performed:				Wed Aug 16 20:35:44 2006					
Surface Calibration									
Readings				References			Results		
Loop:	Air	Loop		Air	Loop		m	b	
Deep	0.012	0.633	V	0.000	500.000	mmho-m	804.288	-9.342	
Medium	0.016	0.752	V	0.000	550.000	mmho-m	747.433	-11.697	
Internal:	Zero	Cal		Zero	Cal		m	b	
Deep	0.012	0.636	V	0.000	500.000	mmho-m	800.610	-9.578	
Medium	0.016	0.752	V	0.000	550.000	mmho-m	747.389	-12.066	
Downhole Calibration									
Readings				References			Results		
Internal:	Zero	Cal		Zero	Cal		m	b	

Internal:	Zero	Cal	Zero	Cal	in	lb		
Deep	1.512	503.799	mmho-m	0.280	500.000	mmho-m	0.995	-1.224
Medium	0.922	551.464	mmho-m	0.370	550.000	mmho-m	0.998	-0.550
Shallow	2.522	0.024	V	500.000	2.000	Ohm-m	145.000	-2.500

Gamma Ray Calibration Report		
Serial Number:	2001	
Tool Model:	OH	
Performed:	Wed Aug 30 14:48:29 2006	
Calibrator Value:	1.0	GAPI
Background Reading:	0.0	cps
Calibrator Reading:	1.0	cps
Sensitivity:	0.1800	GAPI/cps

Sensor	Offset (ft)	Schematic	Description	Len (ft)	OD (in)	Wt (lb)
CHD	25.08		None	0.75	1.50	5.00
GR	22.83		GR-OH (2001) SIE	3.50	3.25	40.00
CILD	10.60		DIL-G (5375) Gearhart	20.83	4.00	345.00
SP	10.60					
CILM	6.89					
RLL3	1.70					

Dataset:	/field/well/run1/_plots/_jobs_/dil
Total Length:	25.08 ft
Total Weight:	390.00 lb
O.D.	4.00 in