

# Patterson

CEMENT BOND  
GAMMA RAY

Company XTO Energy Inc.  
Well Golden Eagle 20-14  
Field Vemejo Coal  
County Las Animas  
State CO

Company XTO Energy Inc.

Well Golden Eagle 20-14

Field Vemejo Coal

County Las Animas State CO

Location: API # : 05 071 08614 00

587' FSL & 2478' FWL

SEC 20 TWP 33S RGE 67W

Permanent Datum Ground Level Elevation 6997'  
Log Measured From Ground Level  
Drilling Measured From Ground Level

Other Services  
PRES  
CONTROL

Elevation

K.B. -----  
D.F. -----  
G.L. 6997'

Date 1/13/06

Run Number one

Depth Driller 2155'

Depth Logger 2096'

Bottom Logged Interval 2092'

Top Log Interval Surf.

Open Hole Size 7 7/8"

Type Fluid Water

Density / Viscosity ///

Max. Recorded Temp. ///

Estimated Cement Top 54'

Time Well Ready 8:00

Time Logger on Bottom 8:10

Equipment Number T244

Location Trinidad

Recorded By Worley

Witnessed By Mr. Polley

Run Number

Bit From To

Size

Weight From To

Size

Wgt/Ft

Top Bottom

8 5/8" 00 771'

5 1/2" 00 NA

NA

<<< Fold Here >>>

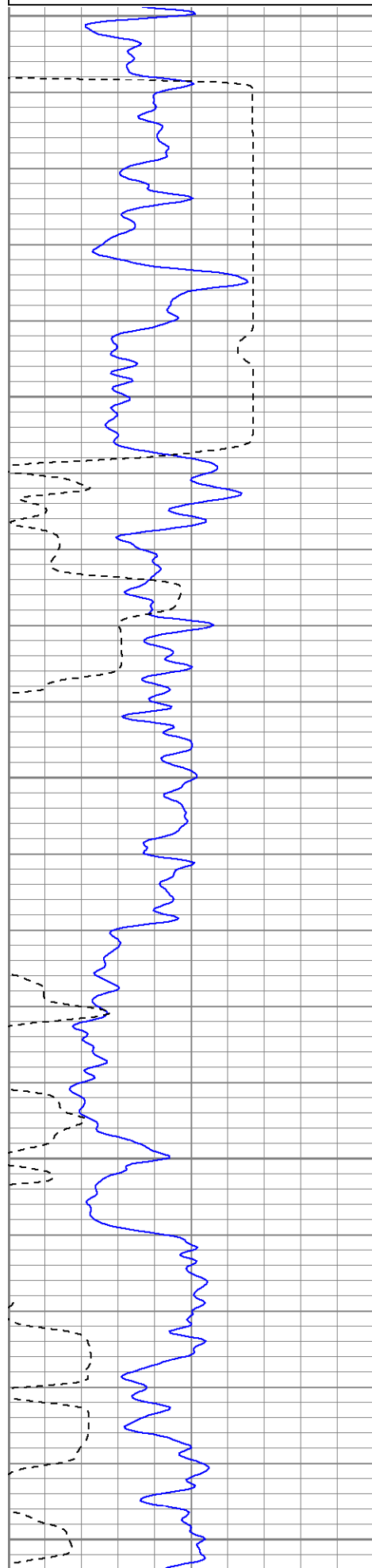
All interpretations are opinions based on inferences from electrical or other measurements and we cannot and do not guarantee the accuracy or correctness of any interpretation, and we shall not, except in the case of gross or willful negligence on our part, be liable or responsible for any loss, costs, damages, or expenses incurred or sustained by anyone resulting from any interpretation made by any of our officers, agents or employees. These interpretations are also subject to our general terms and conditions set out in our current Price Schedule.

## Comments

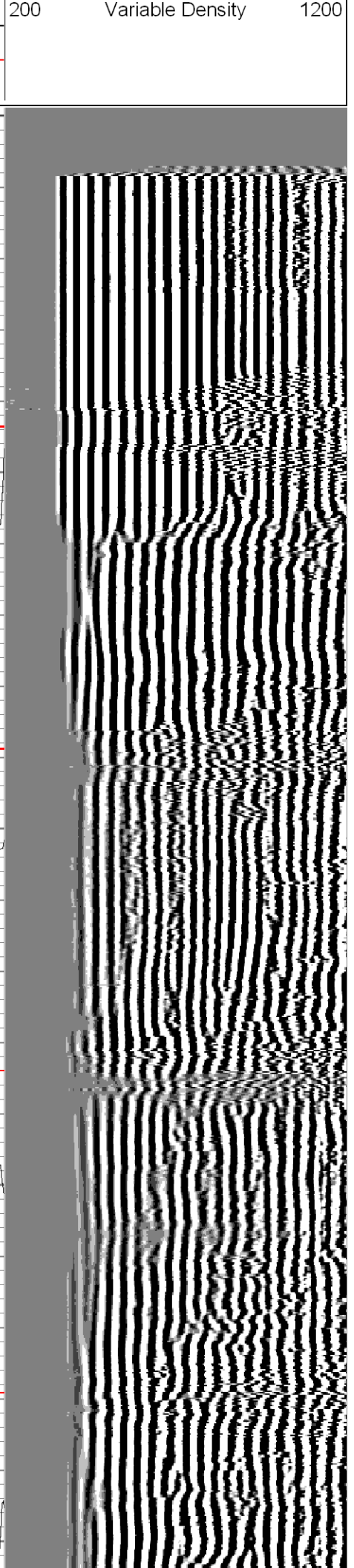
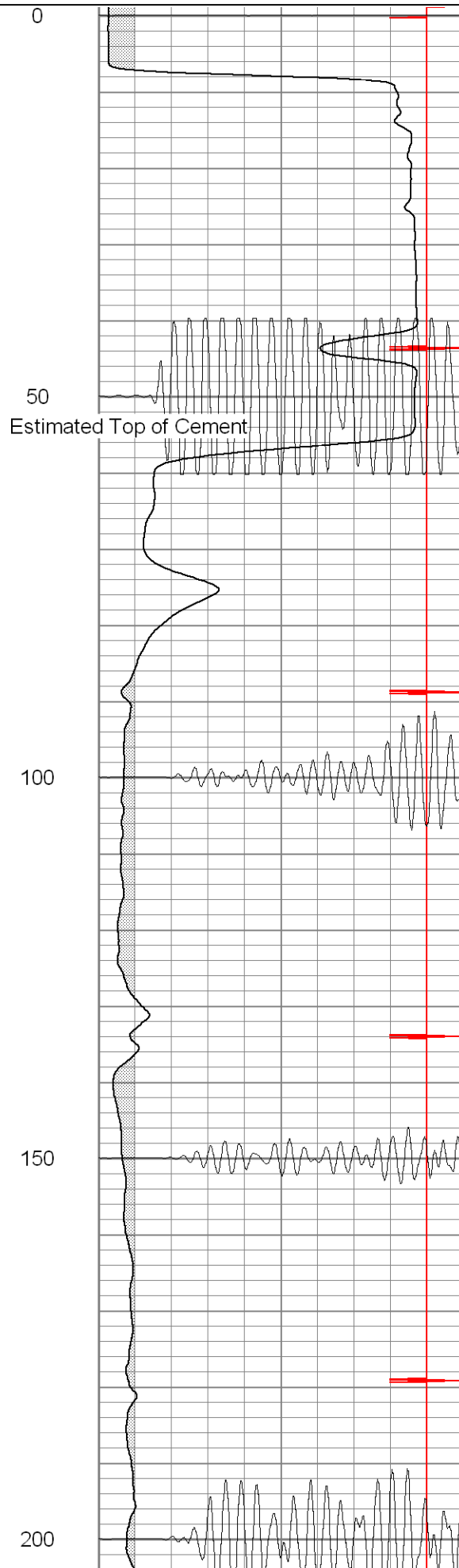
Four Miles past Weston, Take Right, Stay On Main Road To T, Go Right Up Hill To Compressor,  
Take Middle Road And Stay Right, Dead End On Location.

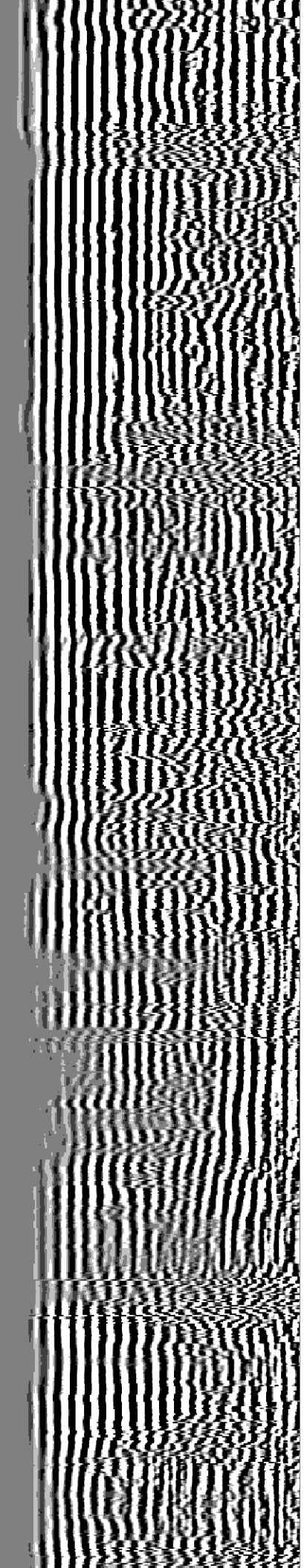
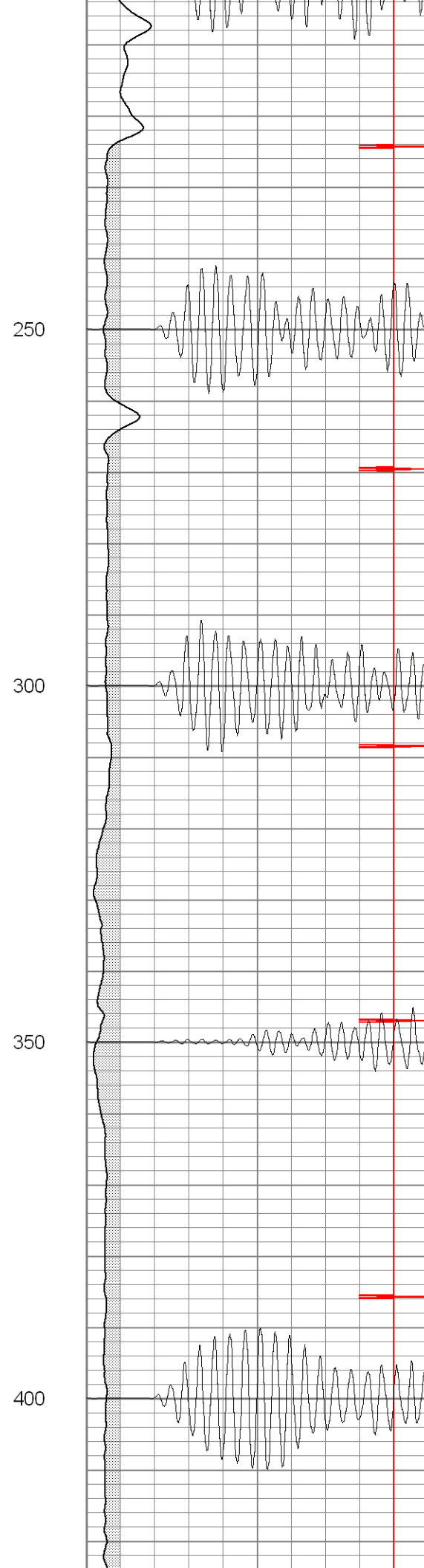
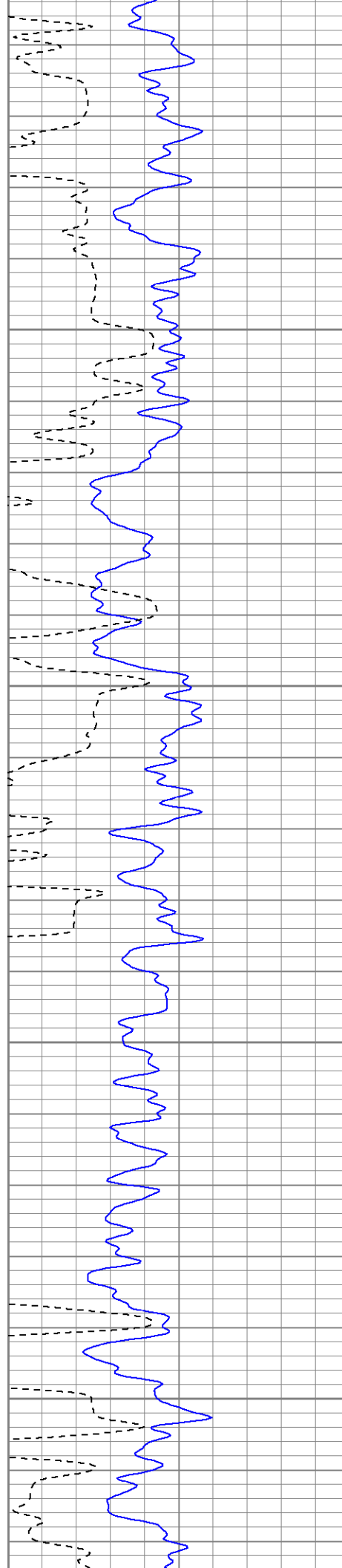
Database File: ge20-14b011306.db  
Dataset Pathname: pass2  
Presentation Format: cblrt  
Dataset Creation: Fri Jan 13 08:20:08 2006 by Log Warrior 7.0 STD Cas  
Charted by: Depth in Feet scaled 1:240

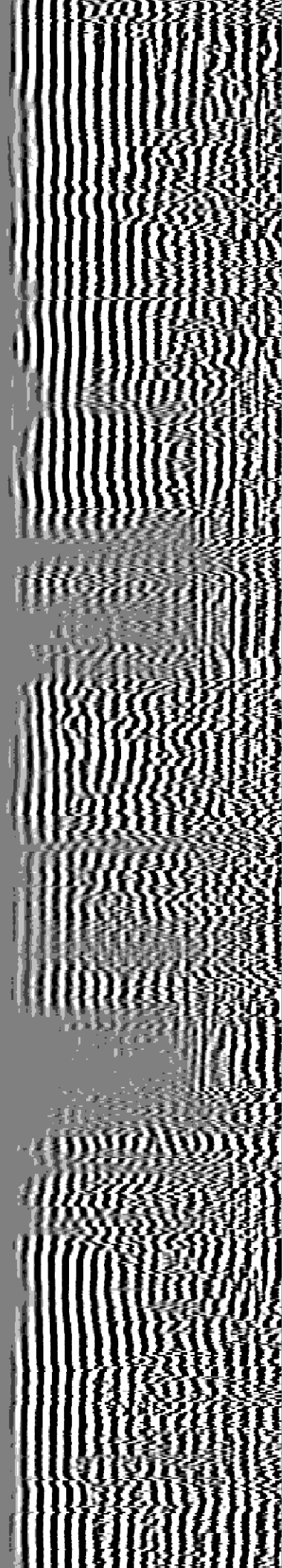
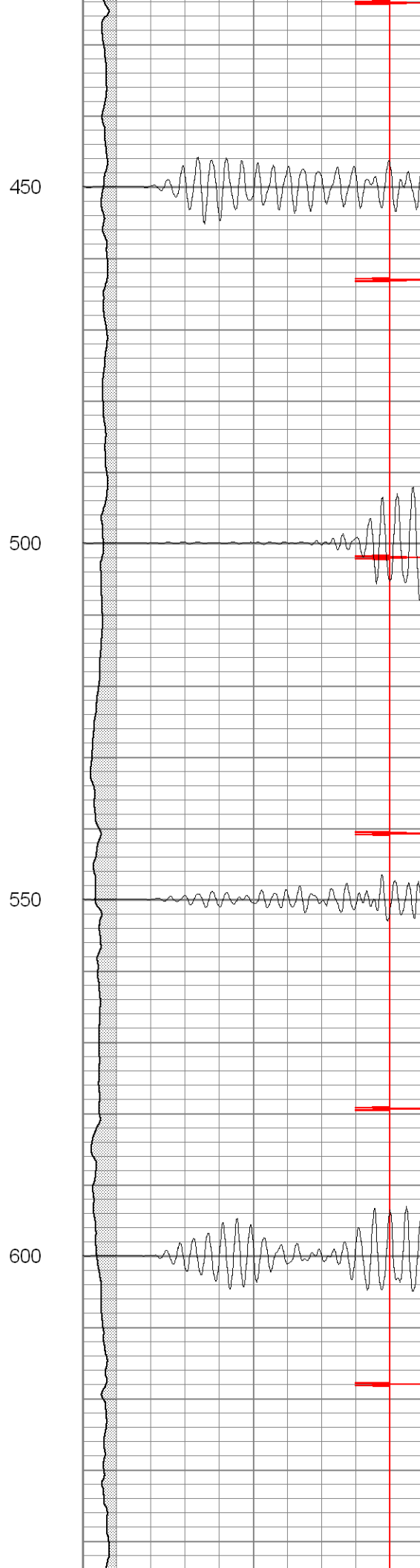
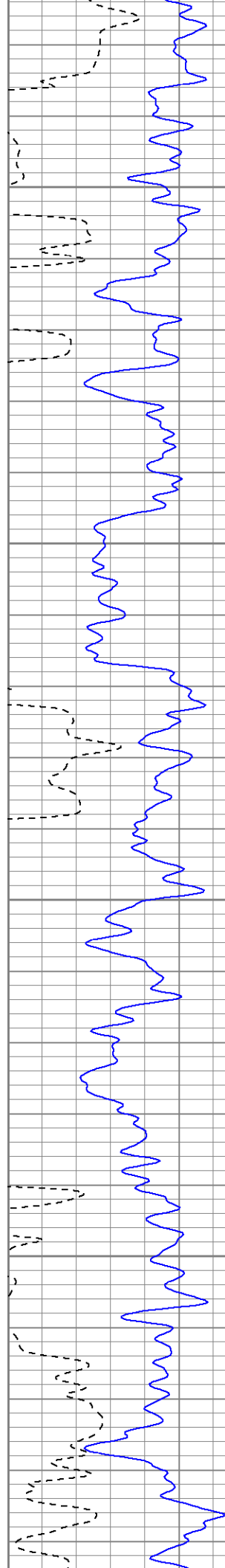
0	GR (GAPI)	200
400	TT3 (usec)	200
<hr style="border-top: 1px dashed black;"/>		

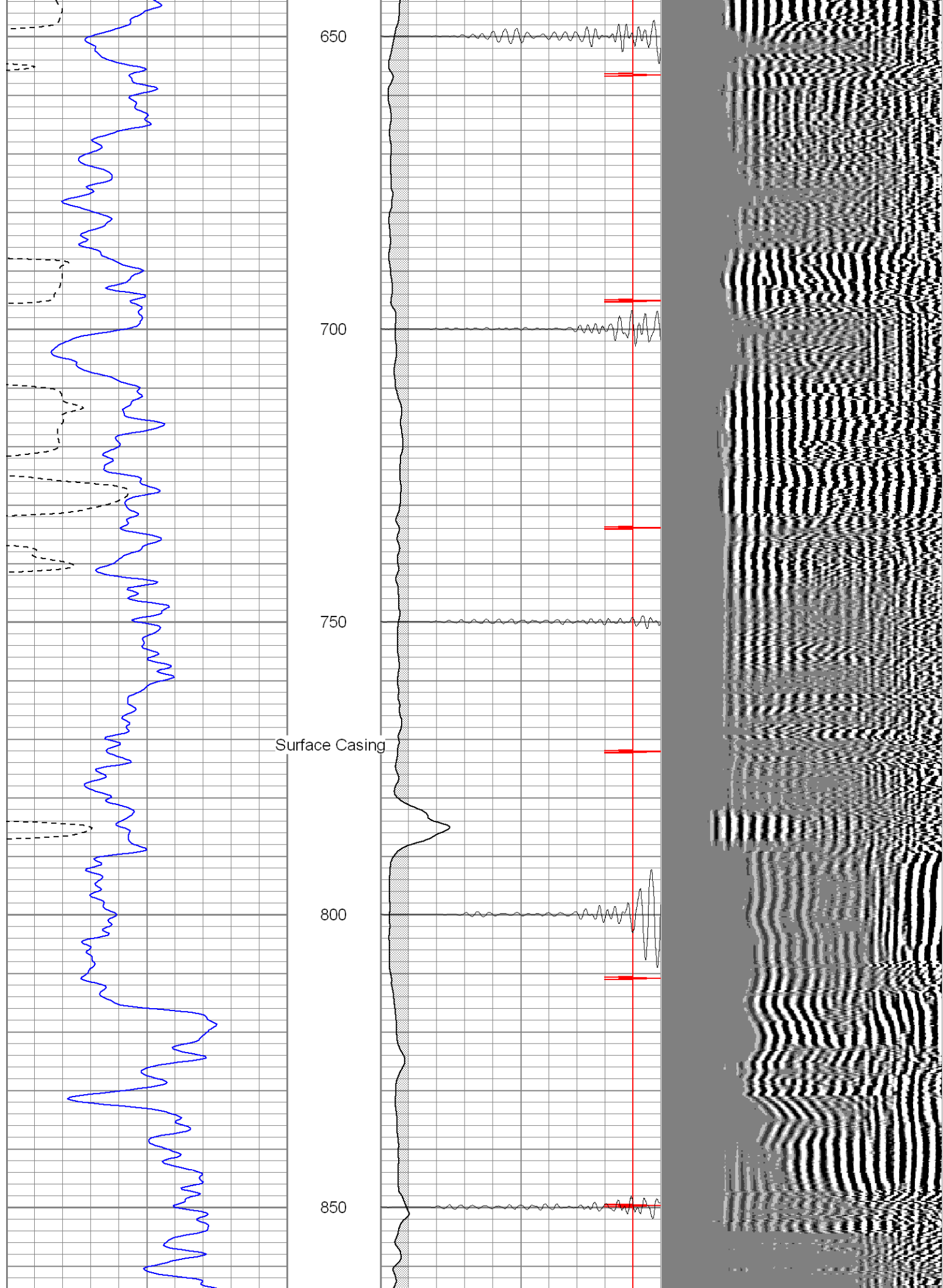


0	AMP3 (mV)	100
18	CCL	-2
200	CBL5	1200

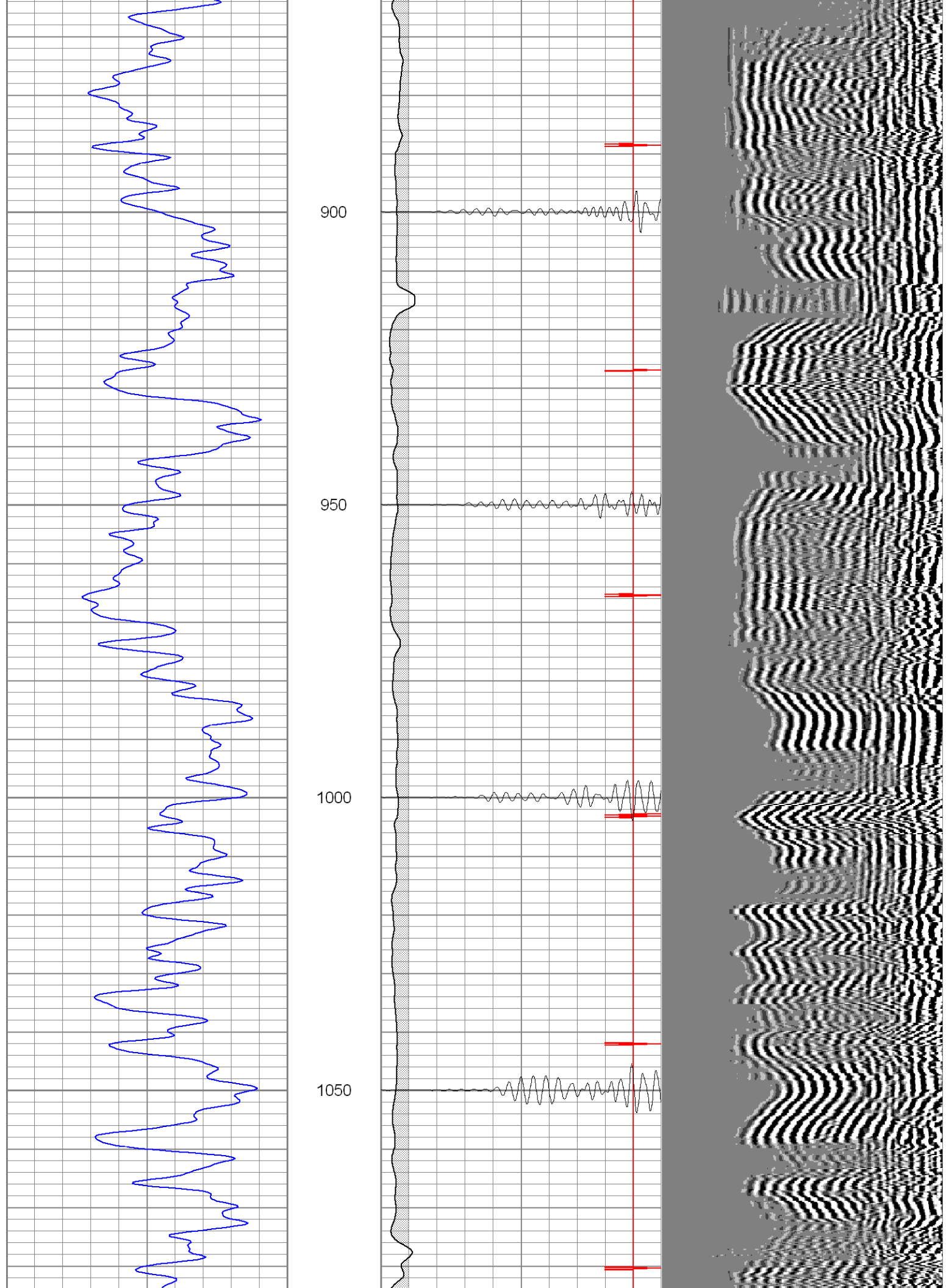


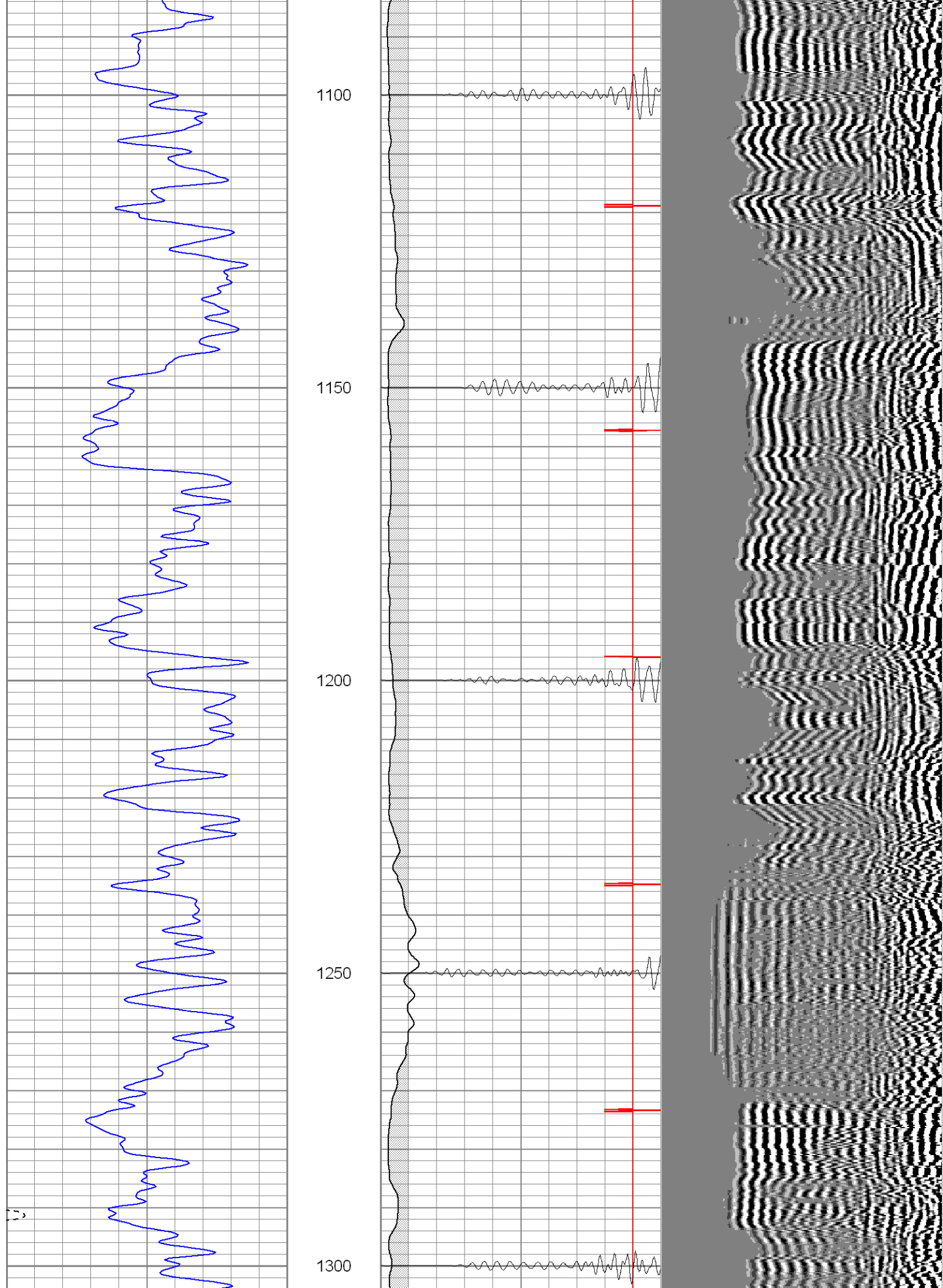


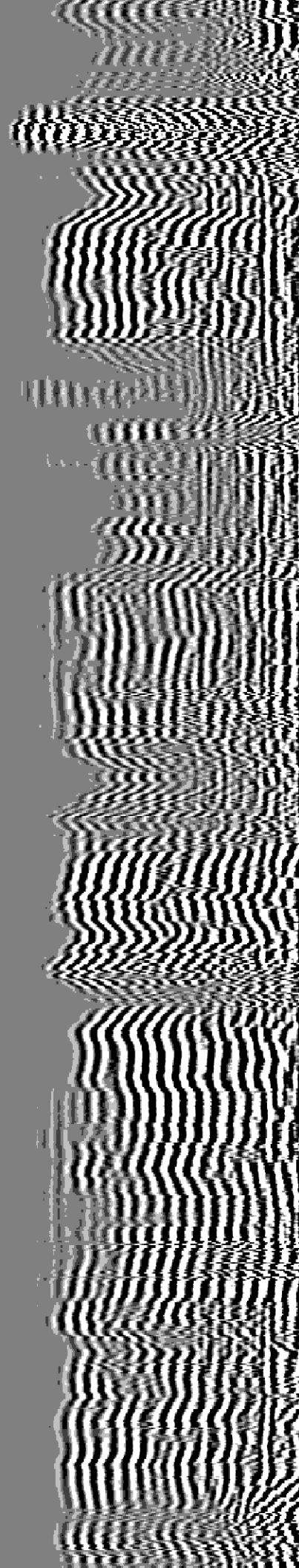
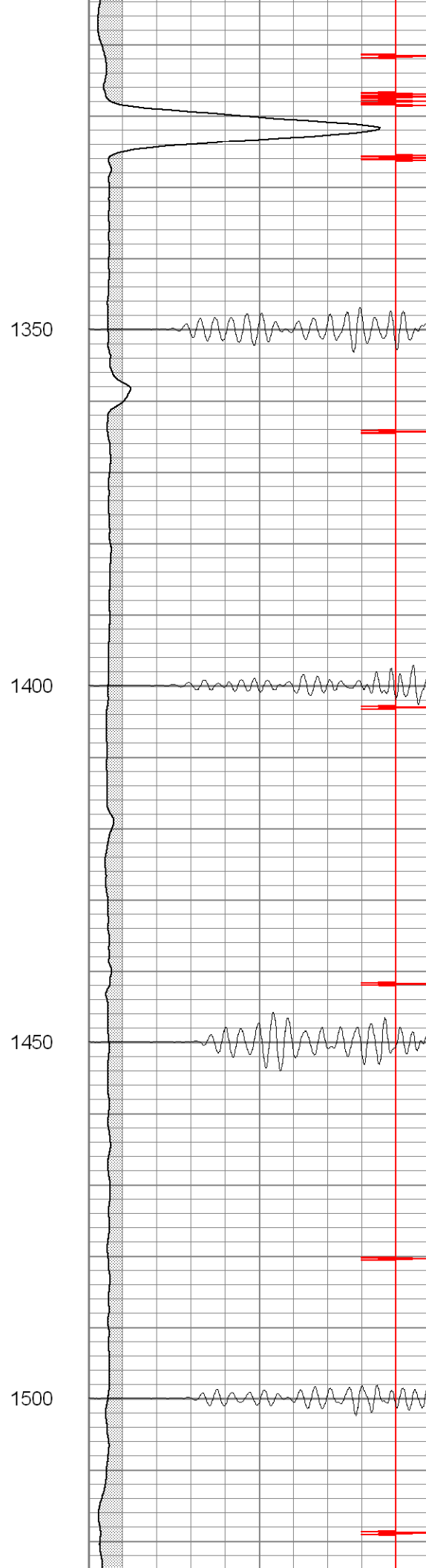
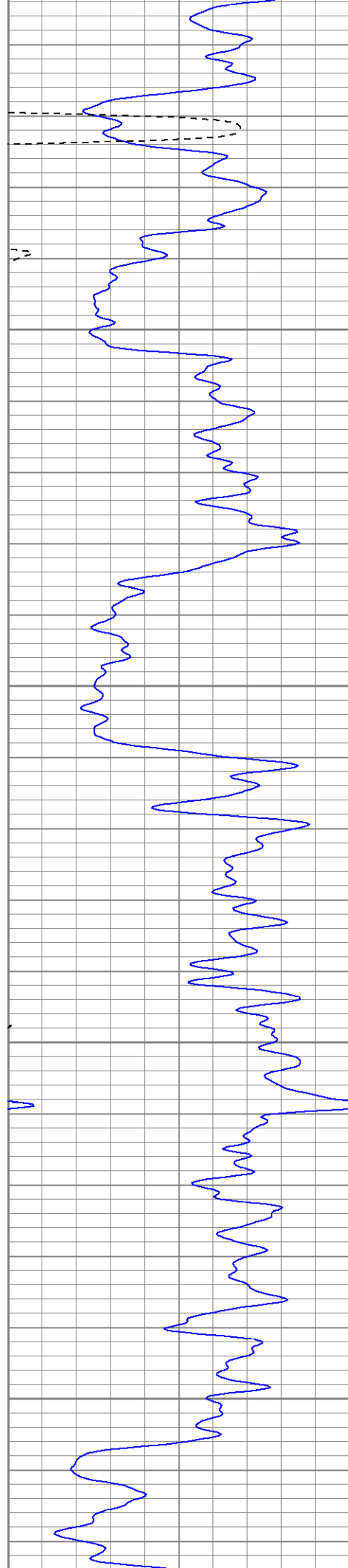




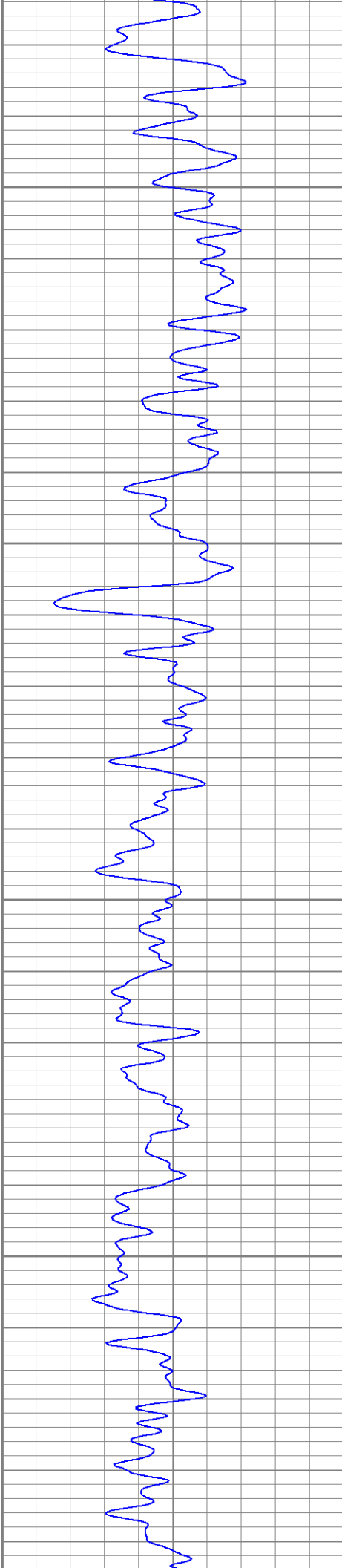










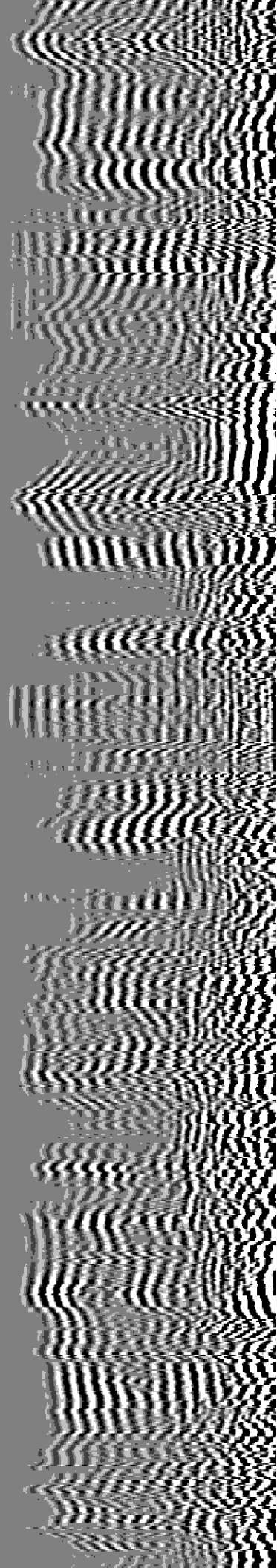
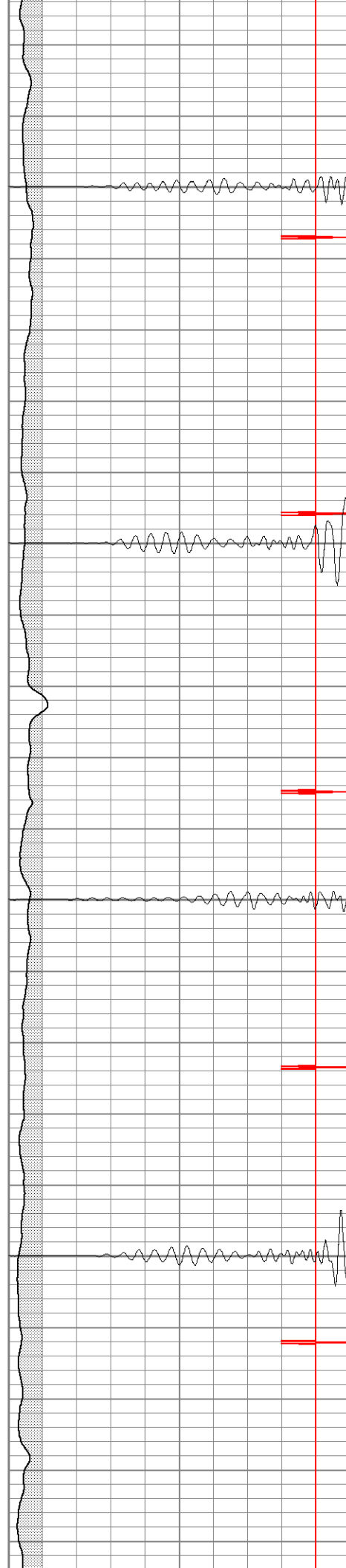


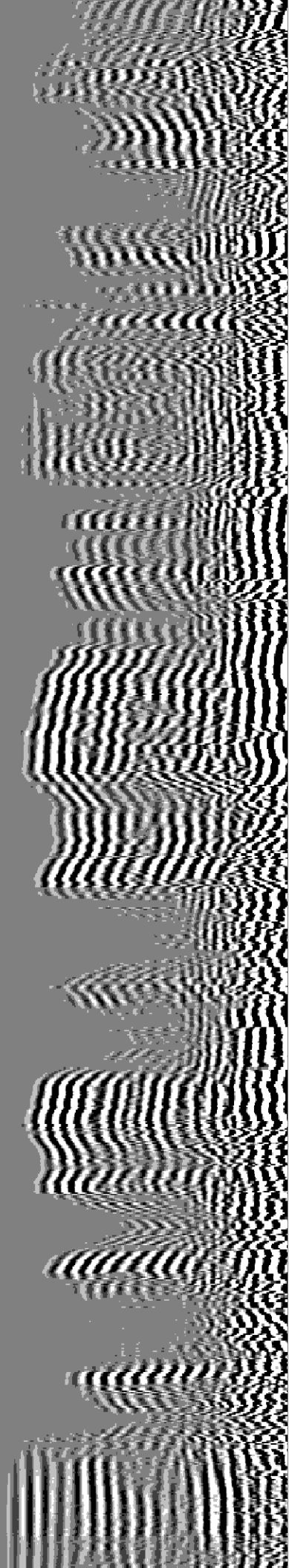
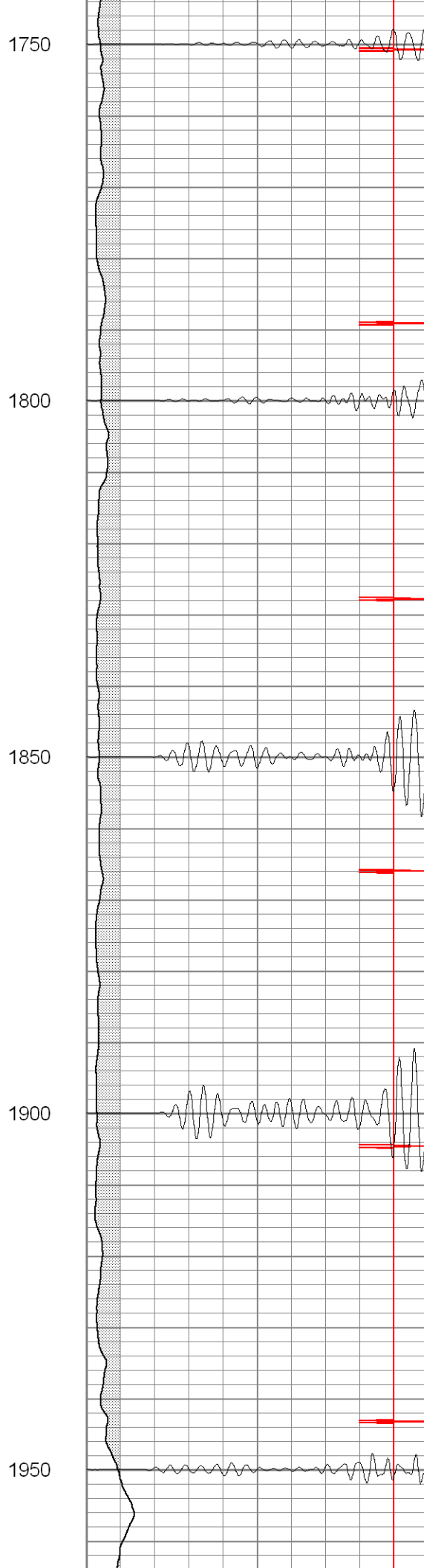
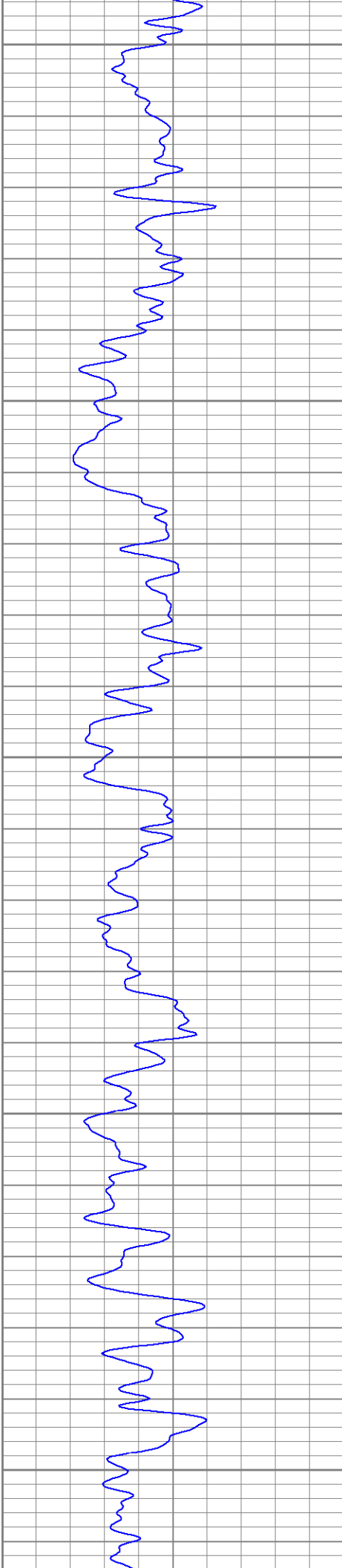
1550

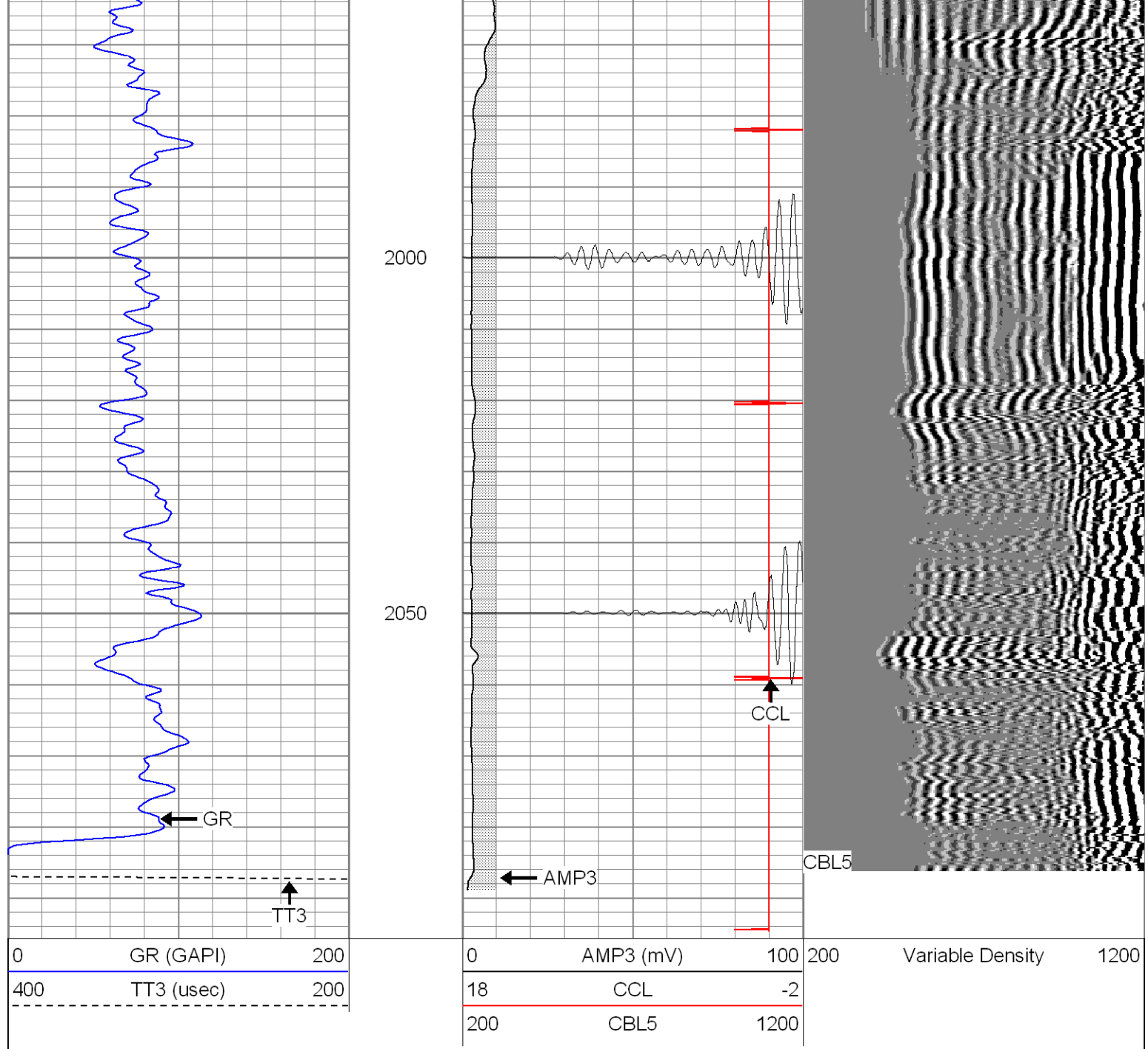
1600

1650

1700



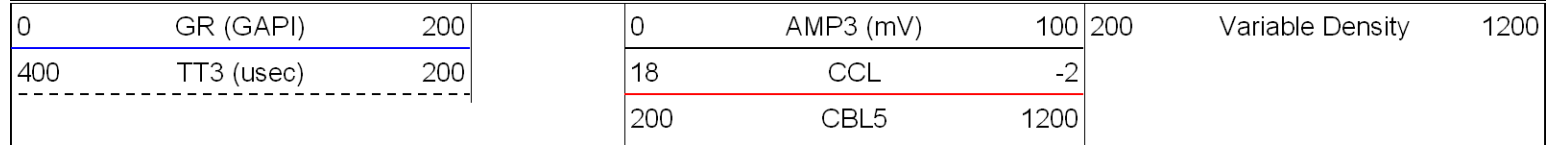


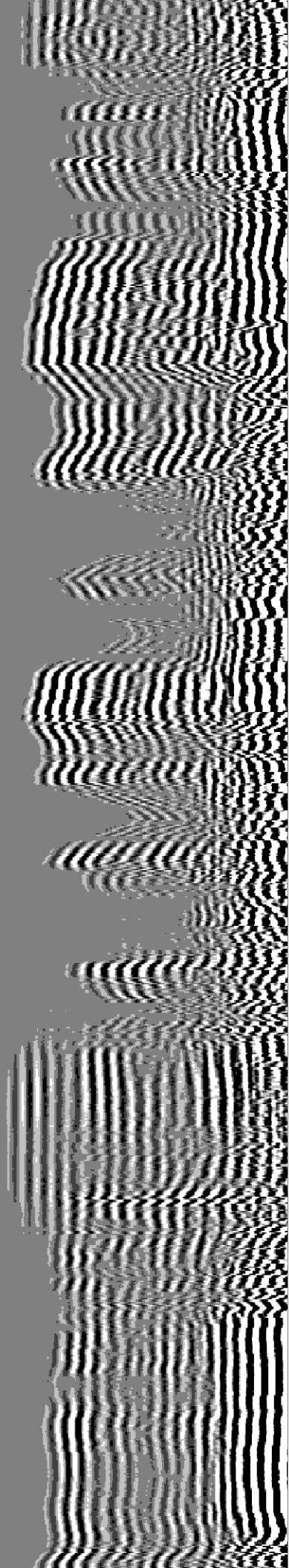
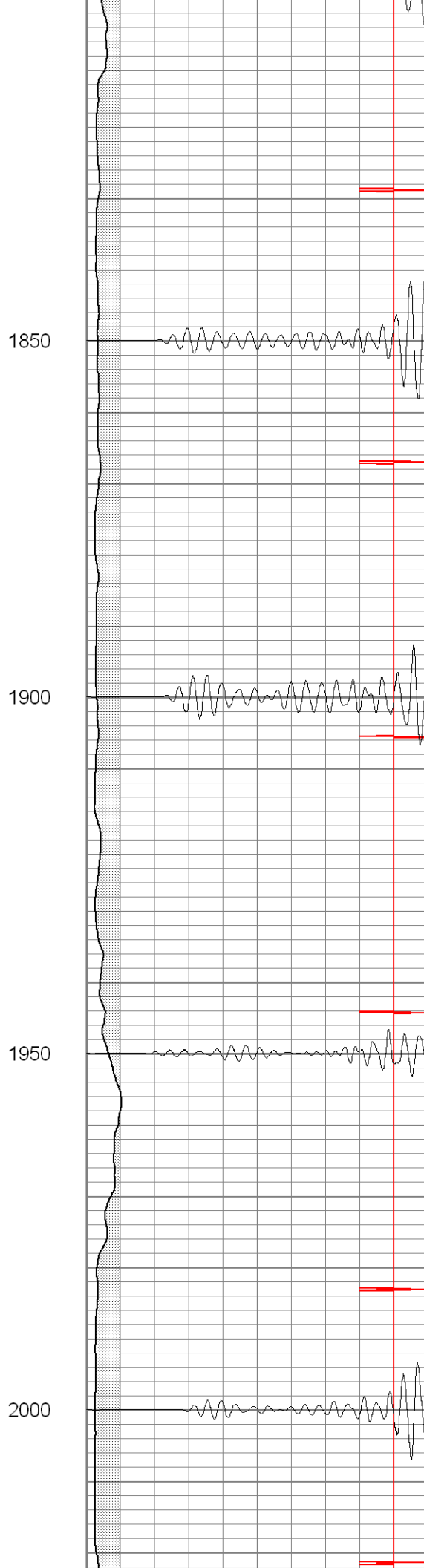
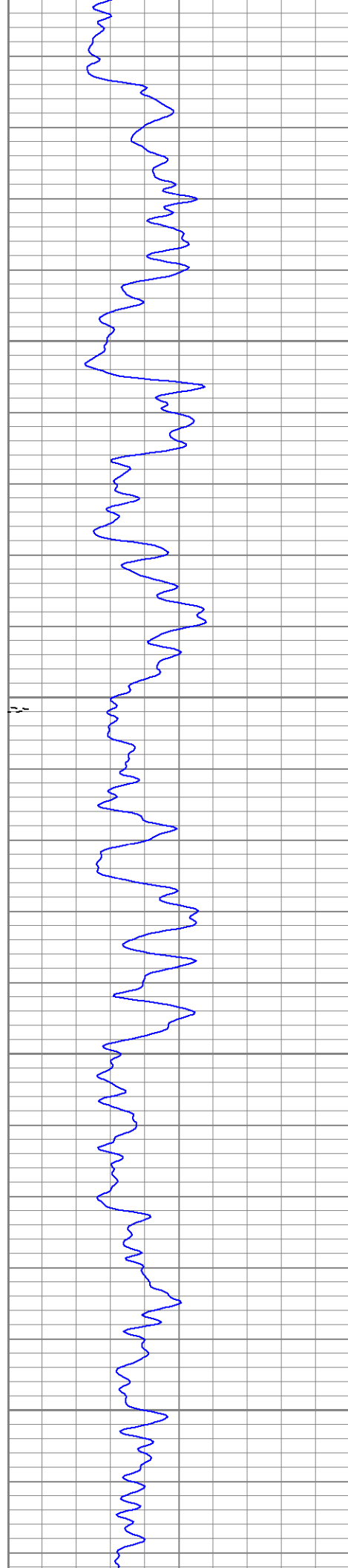


**Patterson**

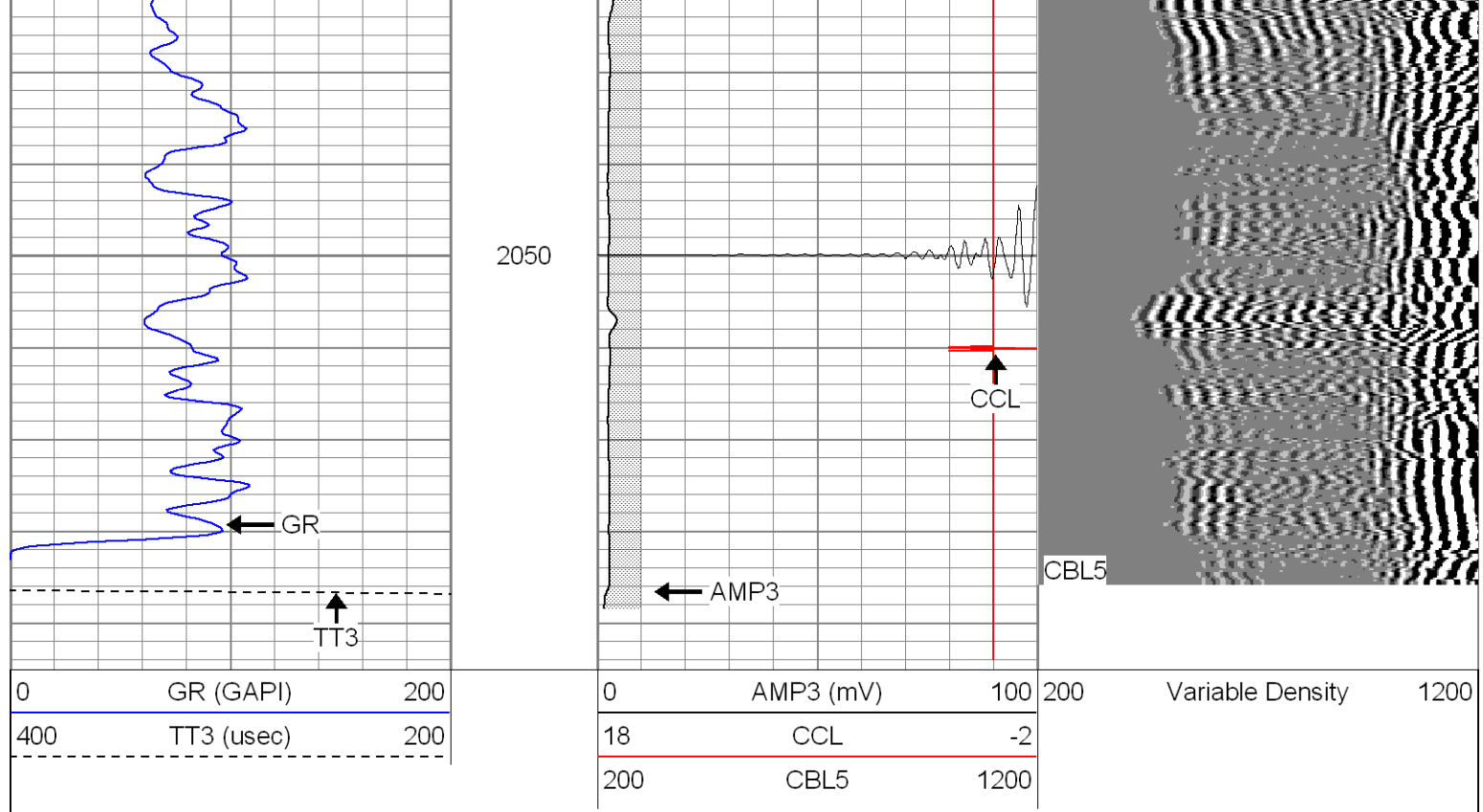
## Repeat Section

Database File: ge20-14b011306.db  
 Dataset Pathname: pass1  
 Presentation Format: cblrt  
 Dataset Creation: Fri Jan 13 08:08:24 2006 by Log Warrior 7.0 STD Cas  
 Charted by: Depth in Feet scaled 1:240









### Cement Bond Log Calibration Report

Serial Number:	Titan5		
Tool Model:	2		
Performed:	Fri Jan 13 08:05:55 2006		
Depth:	2158.27	ft	
Casing Diameter:	5.5	in	
	3' Spacing	5' Spacing	
Signal Zero:	0	0	mV
Calibrated Amplitude:	85	85	mV
Reading at Signal Zero:	-0.02	0	V
Reading in Free Pipe:	1	0.9	V
Gain:	83.3333	94.4444	
Offset:	1.66667	0	

### Gamma Ray Calibration Report

Serial Number:	Titan5	
Tool Model:	T2	
Performed:	Wed Jan 11 10:28:30 2006	
Calibrator Value:	1.0	GAPI
Background Reading:	0.0	cps
Calibrator Reading:	1.0	cps
Sensitivity:	1.2000	GAPI/cps