



SUPERIOR
 Black Lick, Pa.
 Mercer, Pa.
 Wooster, Oh.
 Cleveland, Ok.
 Trinidad, Co.

**CEMENT BOND
 GAMMA RAY
 1000 PSI**

Company XTO Energy Inc.
 Well New Elk 36-10
 Field Purgatorie River
 County Las Animas
 State CO

Company XTO Energy Inc.
 Well New Elk 36-10
 Field Purgatorie River
 County Las Animas State CO

Location: 1579' FSL & 1703' FEL
 API #: 05 071 09136 00
 SEC 36 TWP 33S RGE 68W
 Permanent Datum Ground Level Elevation 787'1"
 Log Measured From Ground Level
 Drilling Measured From Ground Level
 Other Services
 PRES
 CONTROL
 Elevation
 K.B. -----
 D.F. -----
 G.L. 787'1"

Date	3/23/07			
Run Number	one			
Depth Driller	2200'			
Depth Logger	2129'			
Bottom Logged Interval	2125'			
Top Log Interval	Surf.			
Open Hole Size	7 7/8"			
Type Fluid	water			
Density / Viscosity	///			
Max. Recorded Temp.	///			
Estimated Cement Top	150'			
Time Well Ready	2:45			
Time Logger on Bottom	2:57			
Equipment Number	0703			
Location	Trinidad			
Recorded By	Worley			
Witnessed By	Mr. Polley			
Run Number	Borehole Record		Tubing Record	
	Bit	From	To	Size
Casing Record	Size	Vgt/Ft	Top	Bottom
Surface String	8 5/8"		00	498'
Prot. String				
Production String	5 1/2"		00	NA
Liner				

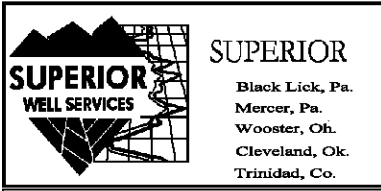
<<< Fold Here >>>

All interpretations are opinions based on inferences from electrical or other measurements and we cannot and do not guarantee the accuracy or correctness of any interpretation, and we shall not, except in the case of gross or willful negligence on our part, be liable or responsible for any loss, costs, damages, or expenses incurred or sustained by anyone resulting from any interpretation made by any of our officers, agents or employees. These interpretations are also subject to our general terms and conditions set out in our current Price Schedule.

Comments

Second Bosque entrance four miles past Weston turn left, at Y stay left on Ciruele Canyon, drive to windmill stay right, at next Y stay left, third drive thru location.

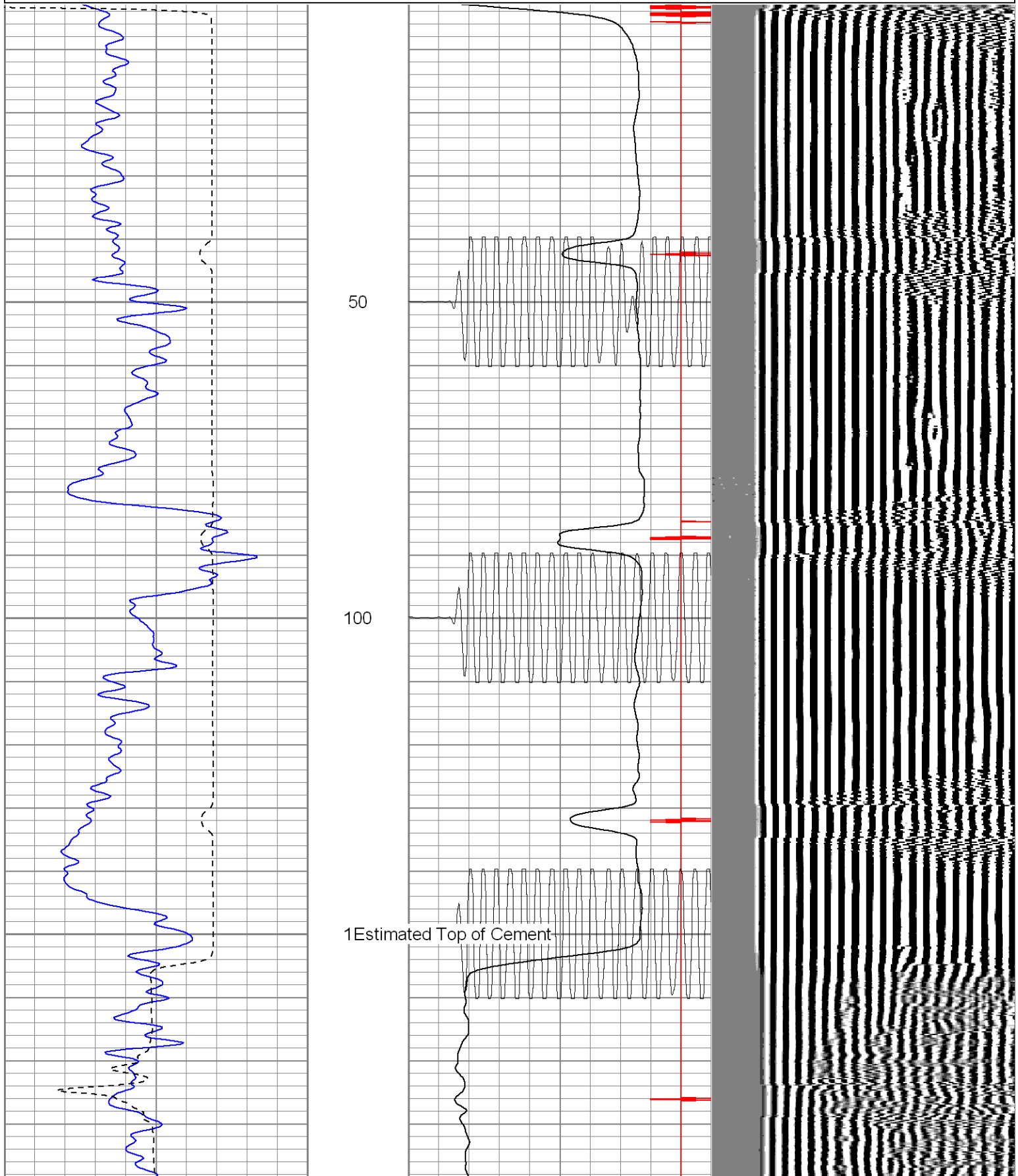
CBL ran under 1000 PSI.

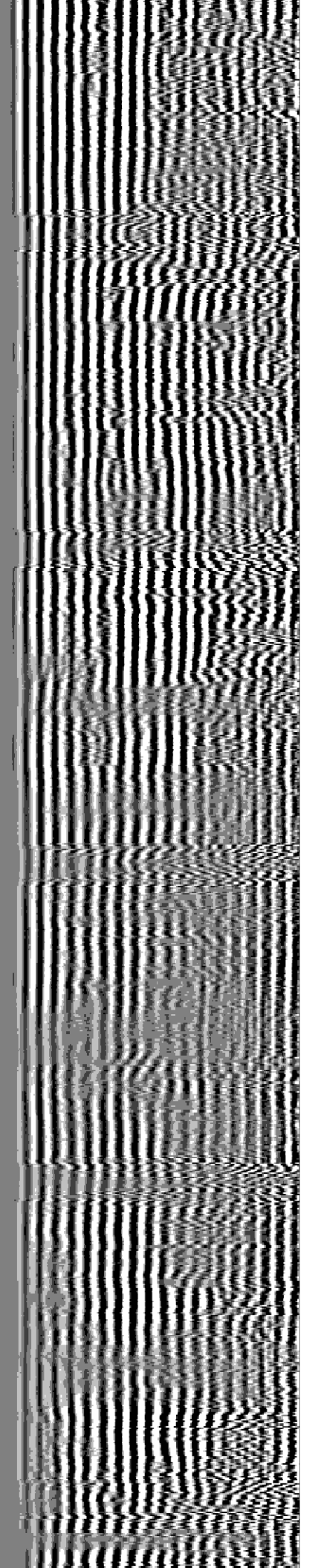
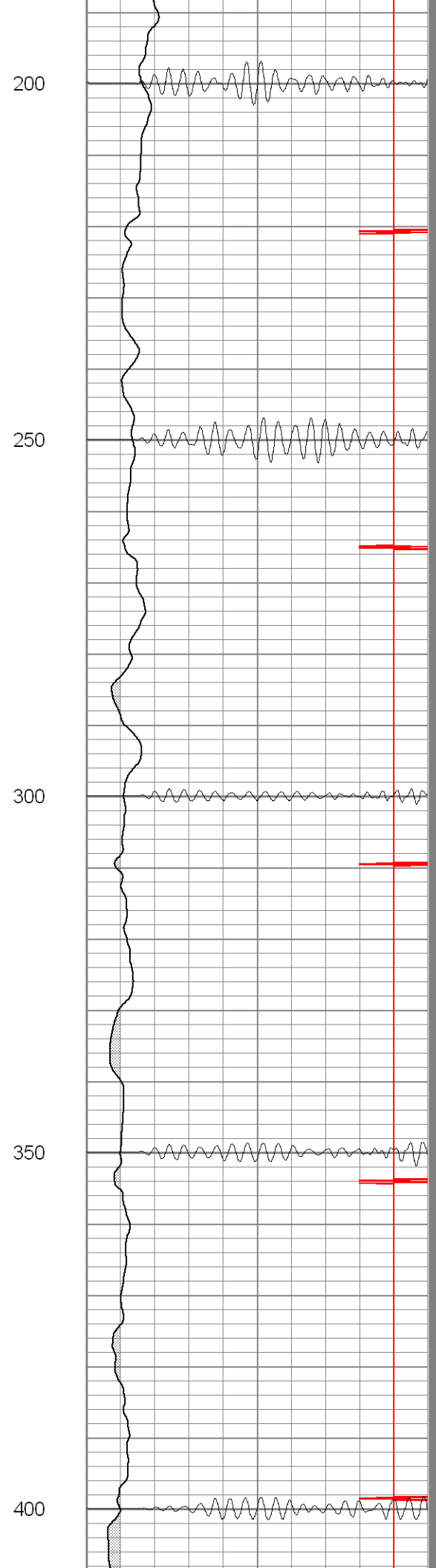
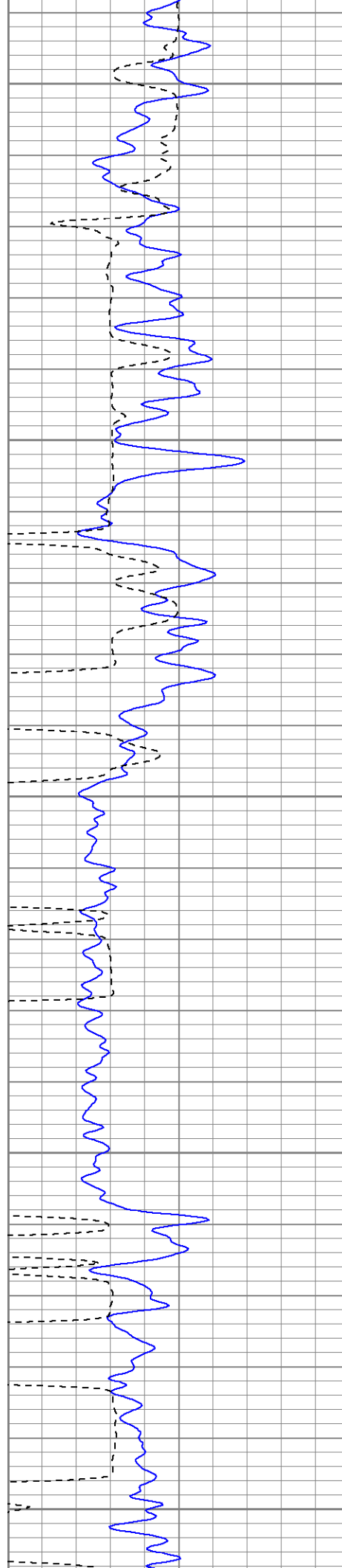


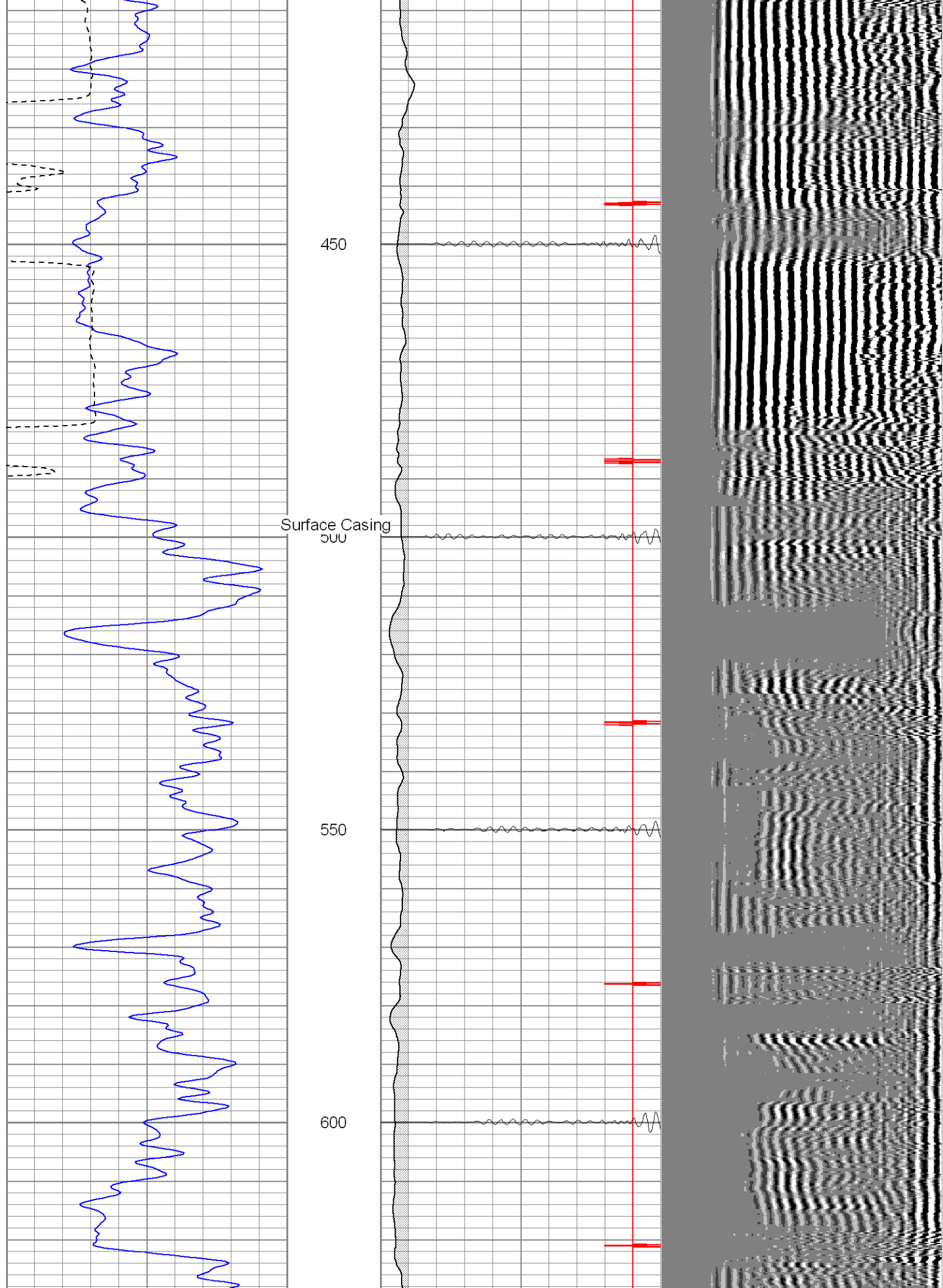
Main Pass 1000 PSI

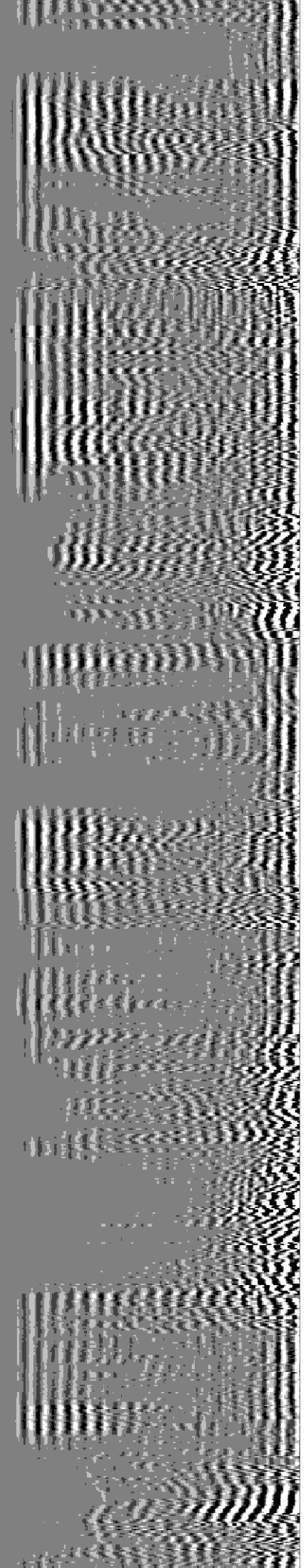
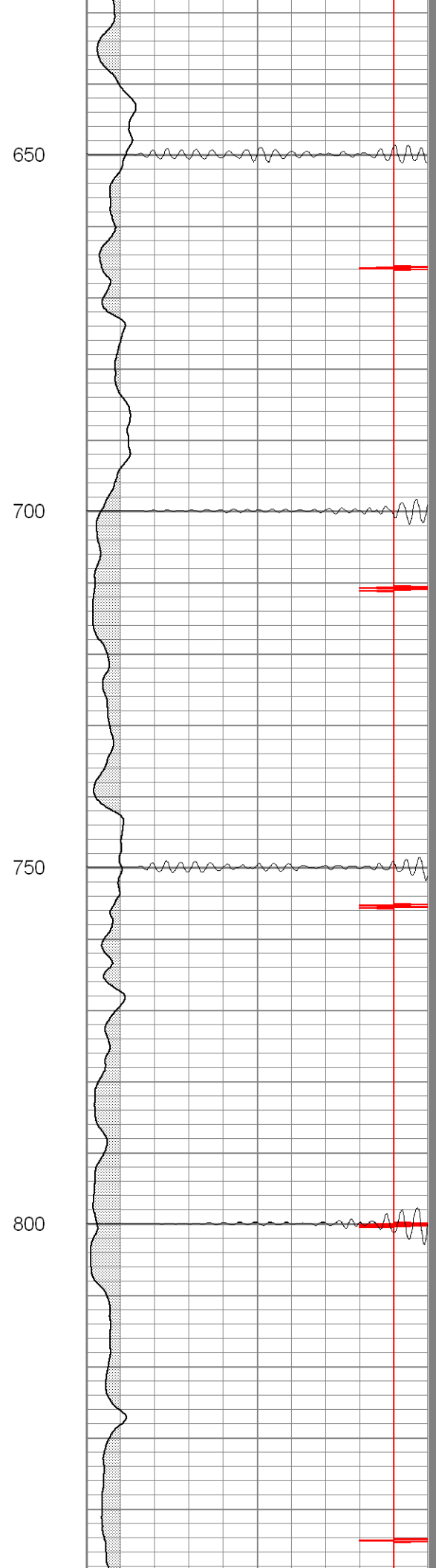
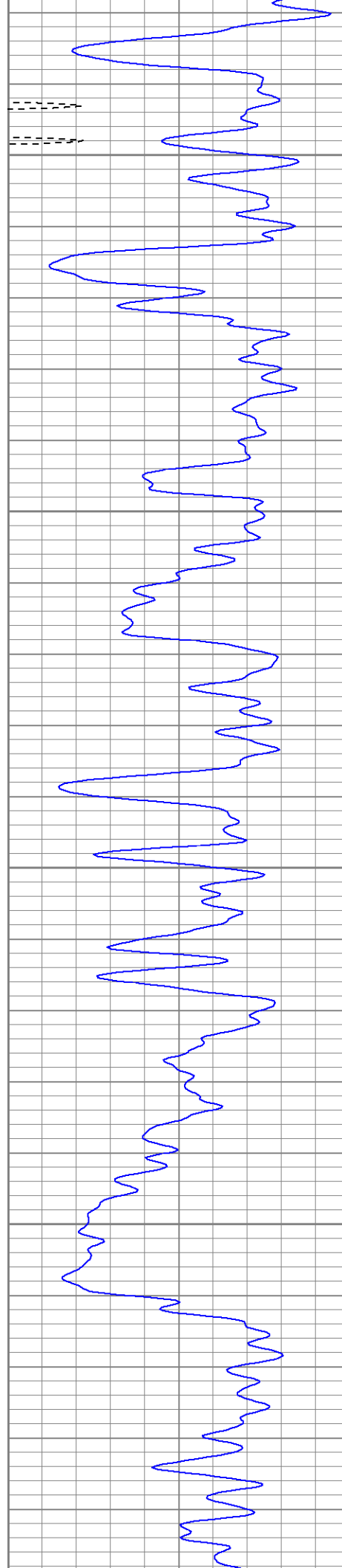
Database File: ne36-10b32307.db
 Dataset Pathname: pass2.1
 Presentation Format: cblrt
 Dataset Creation: Fri Mar 23 16:03:03 2007 by Calc Warrior 7.0 STD Cas
 Charted by: Depth in Feet scaled 1:240

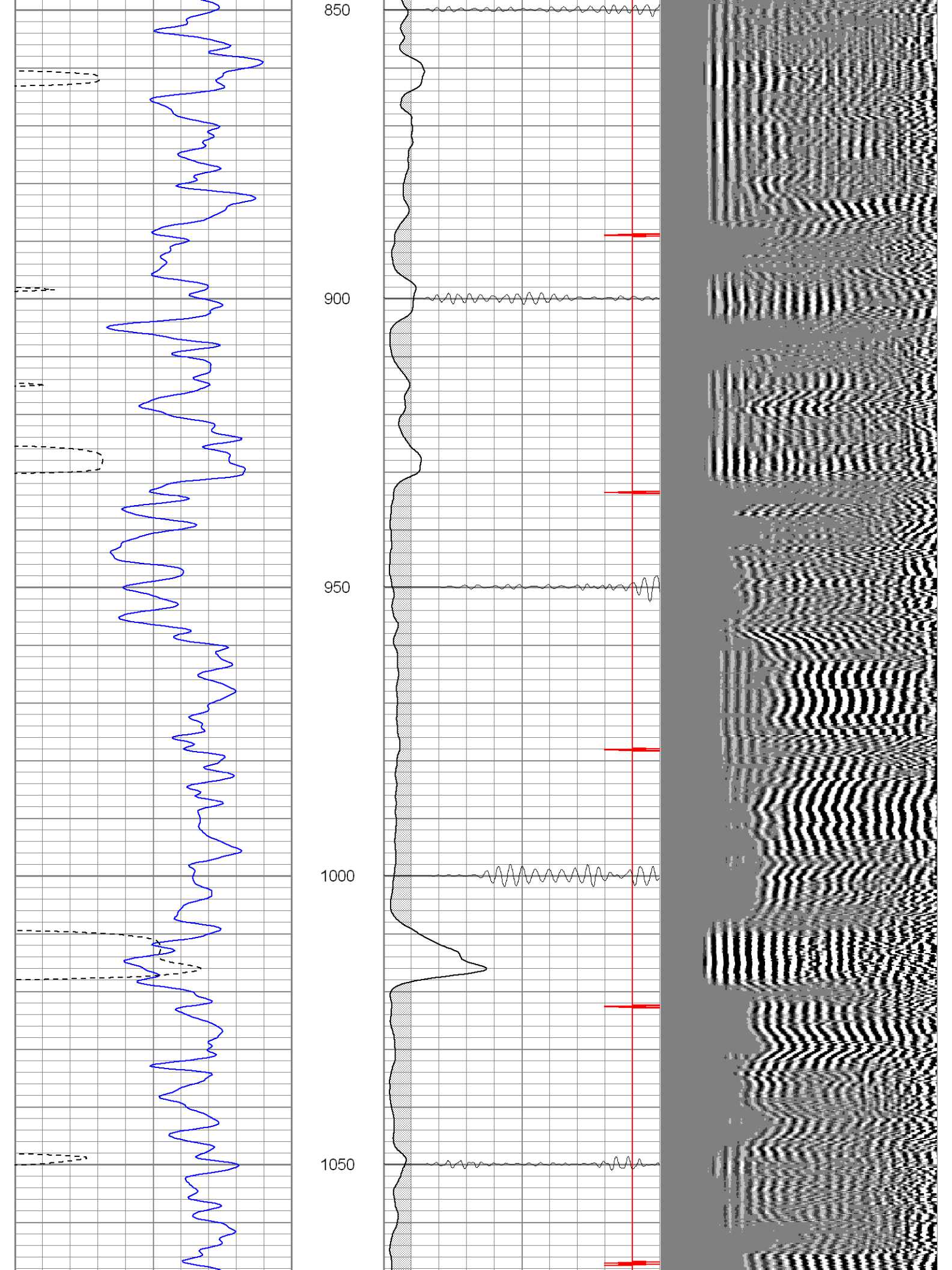
0	GR (GAPI)	200	0	AMP3 (mV)	100	200	Variable Density	1200
400	TT3 (usec)	200	18	CCL	-2			
			200	CBL5	1200			

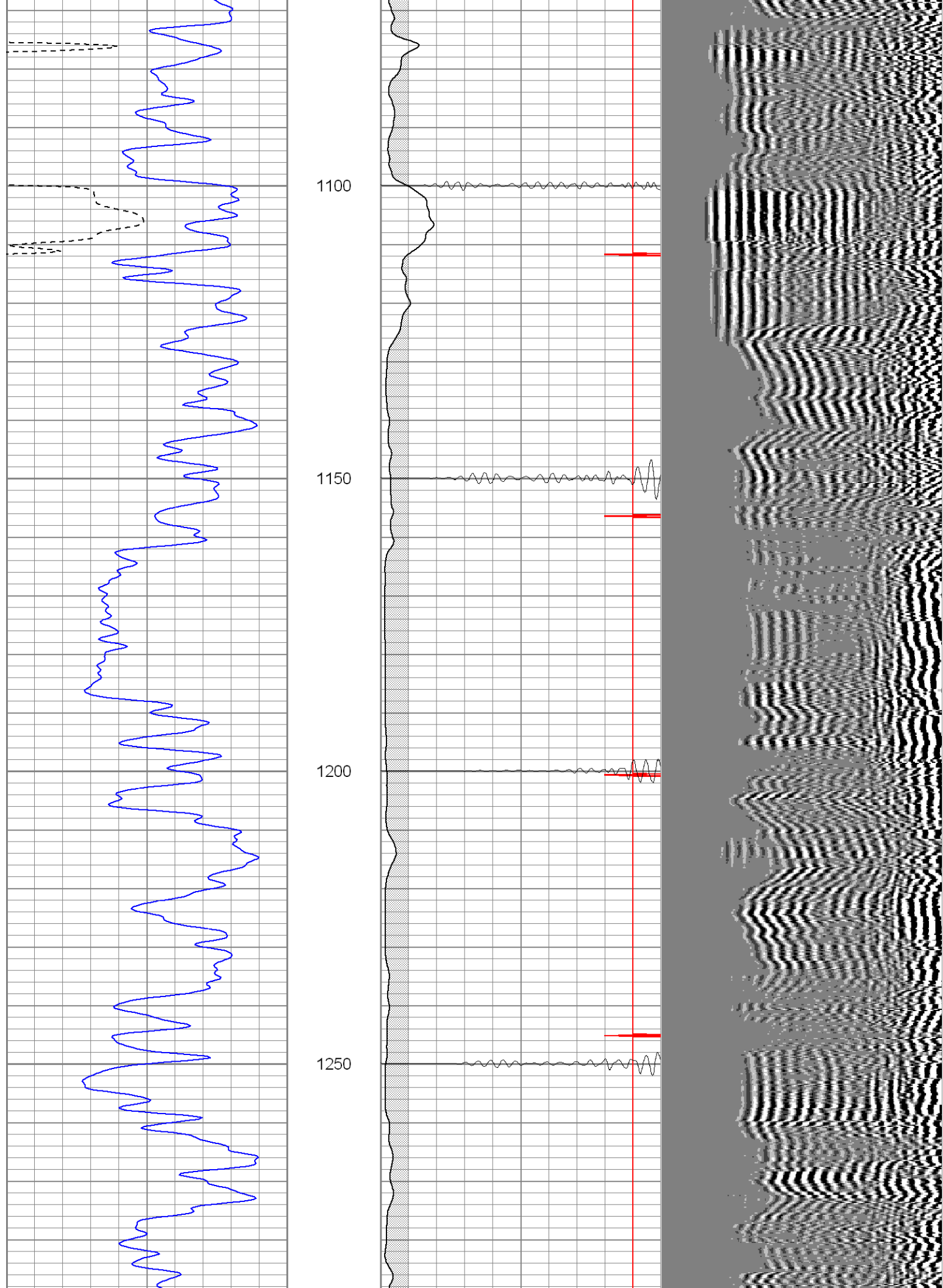


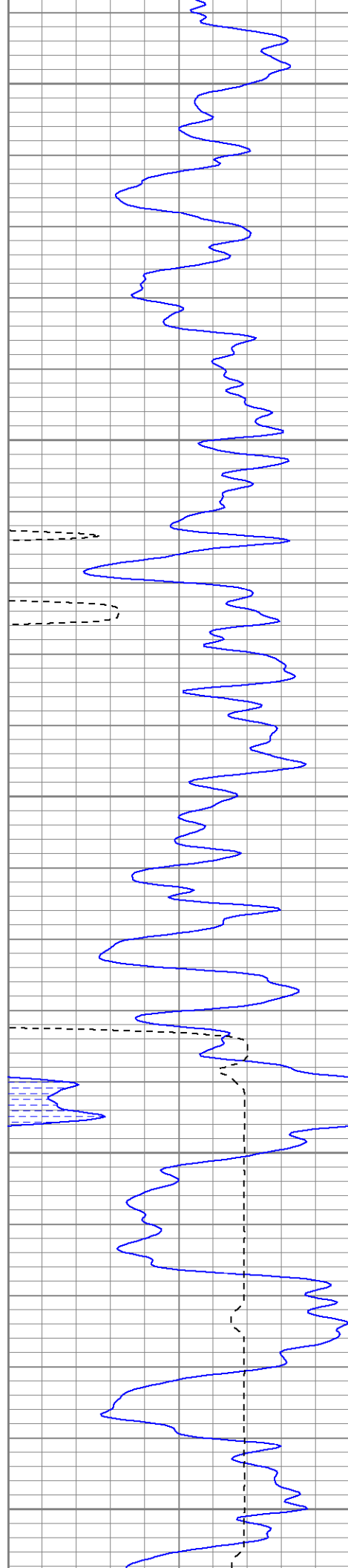












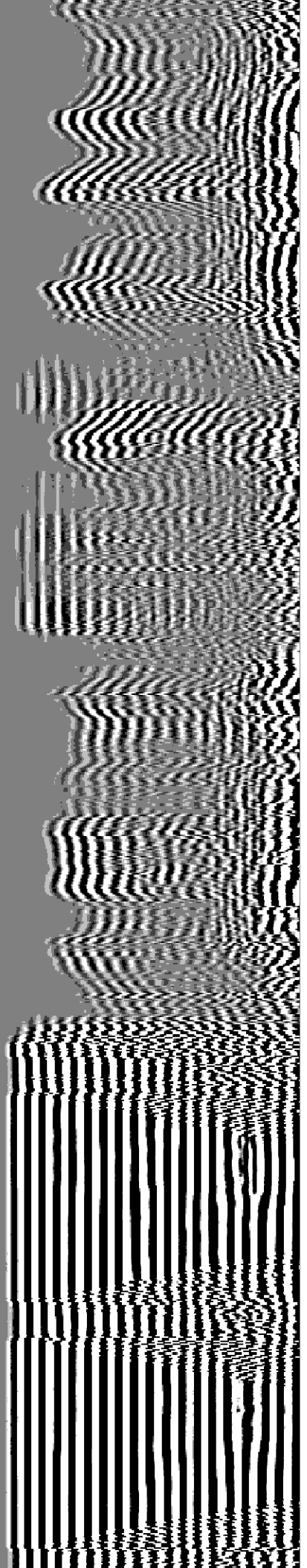
1300

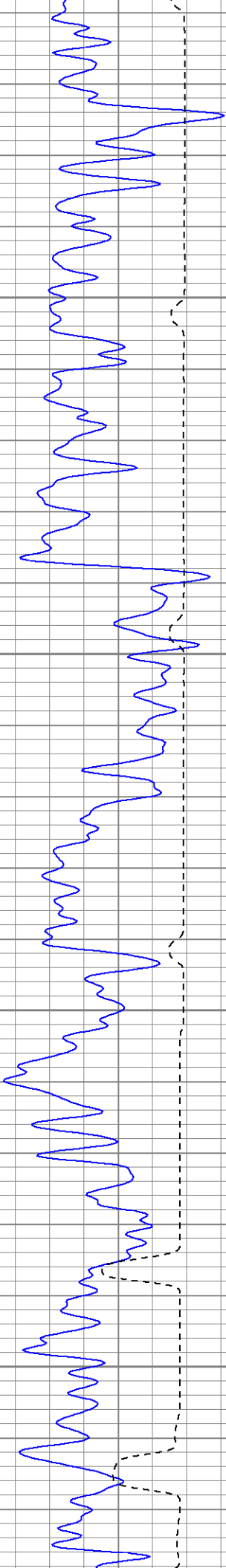
1350

1400

1450

1500



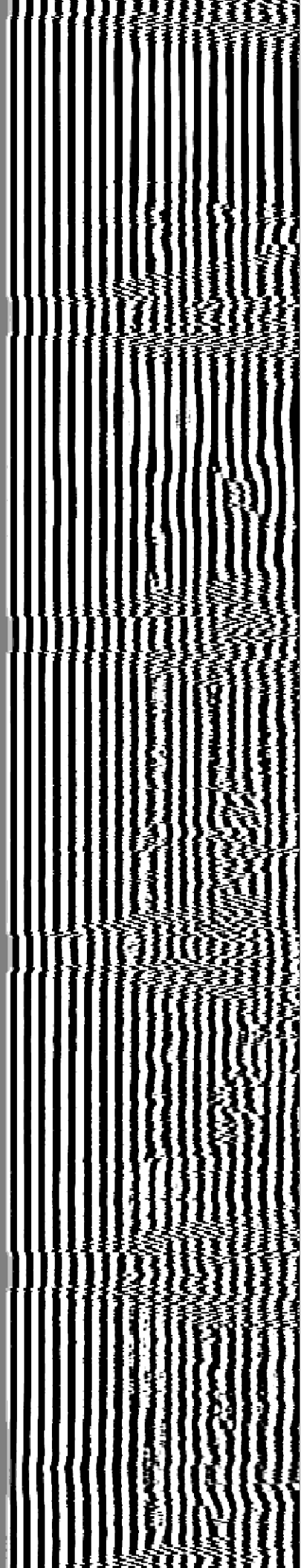
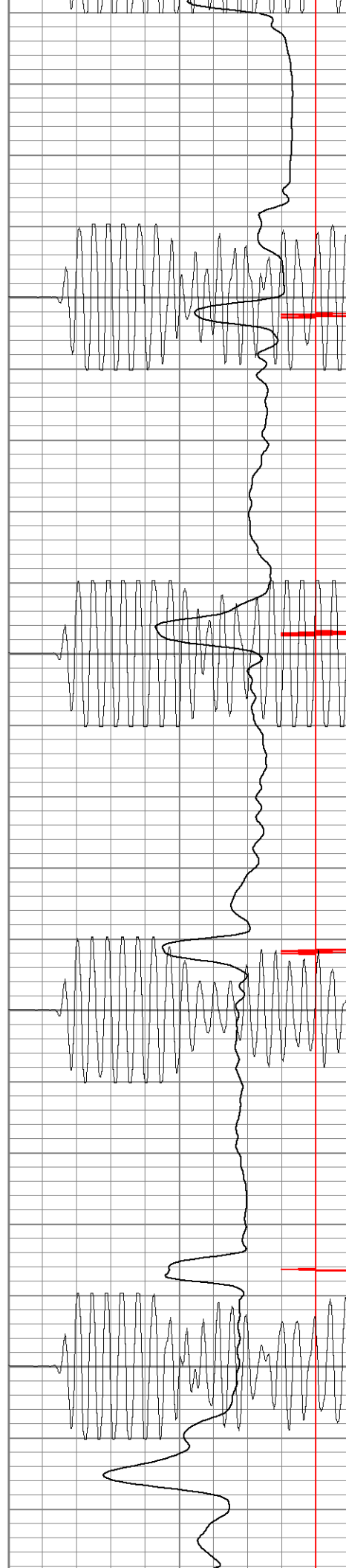


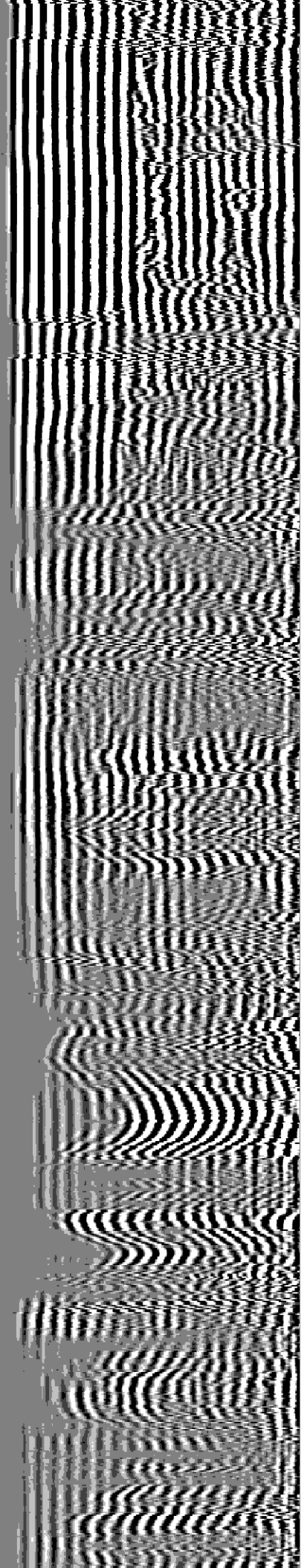
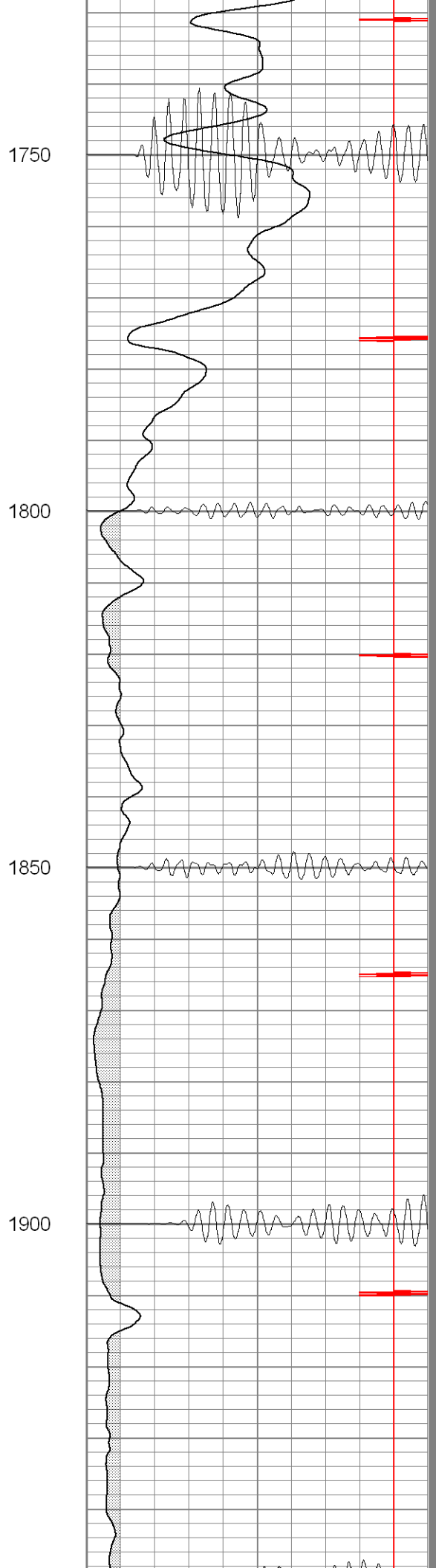
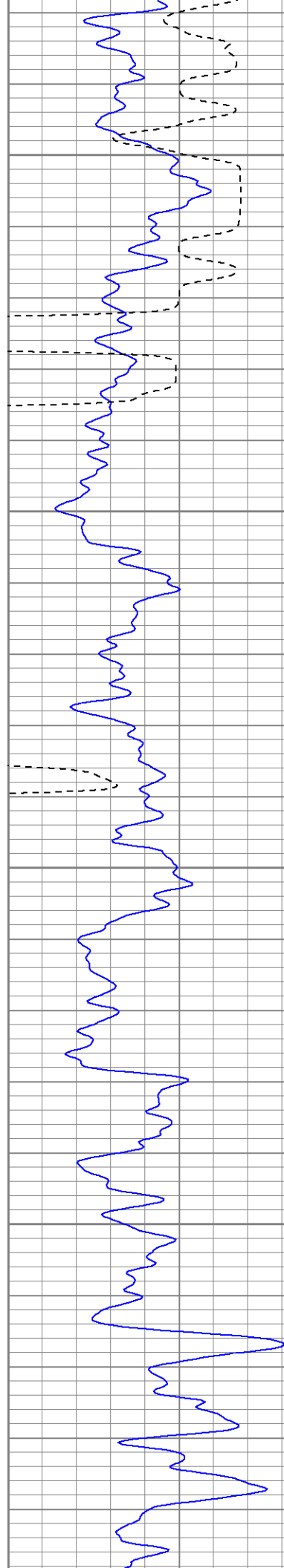
1550

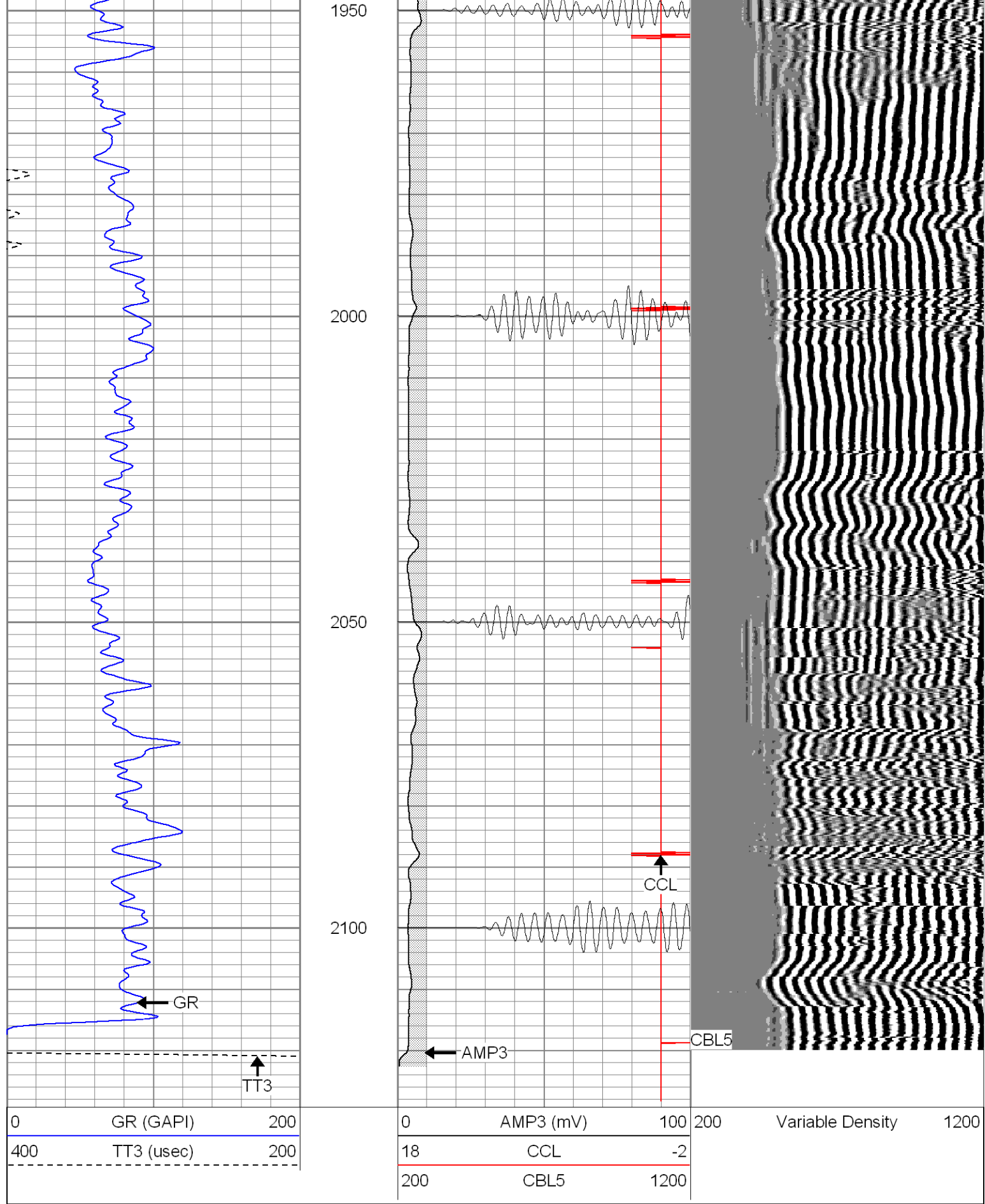
1600

1650

1700





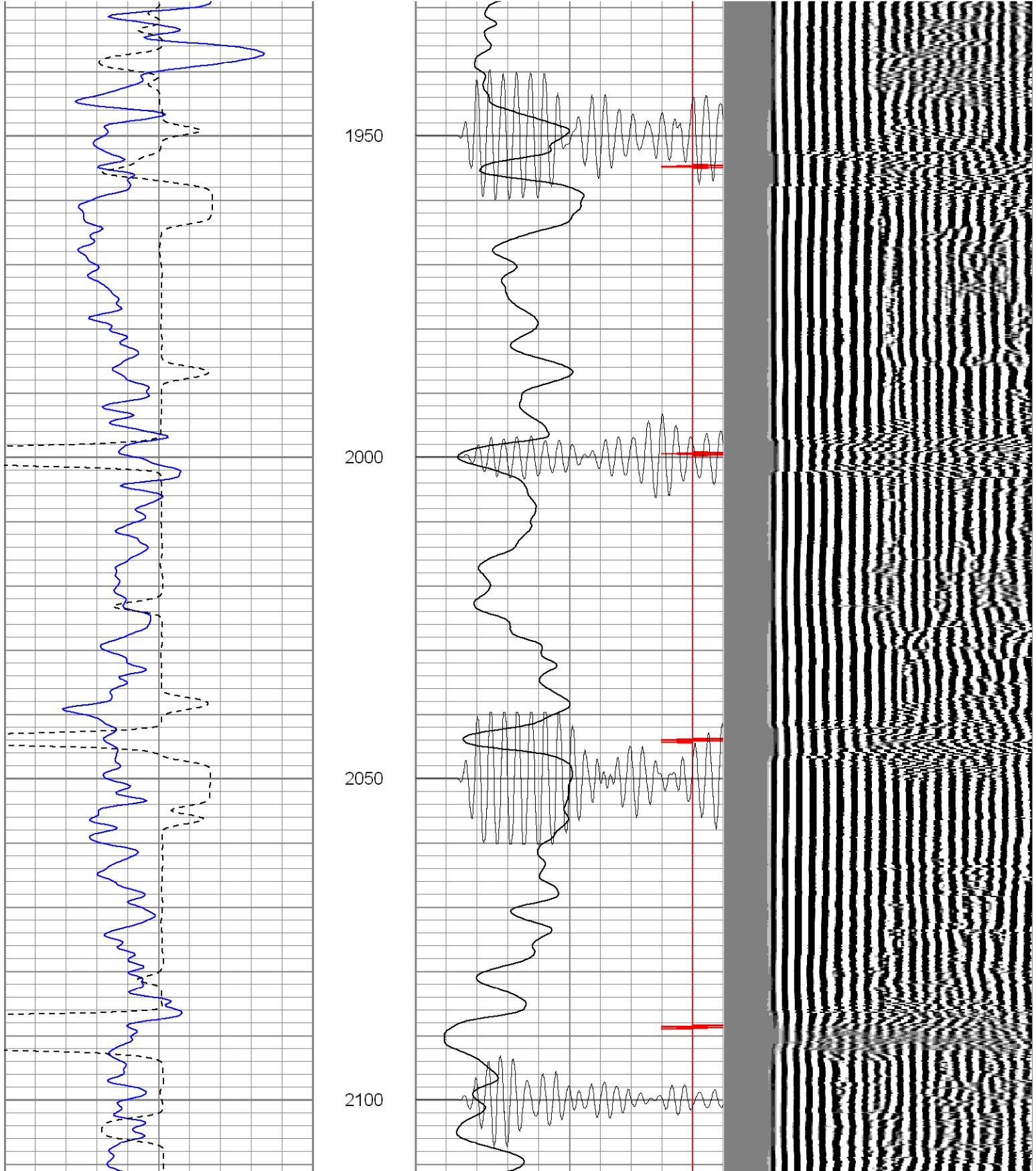


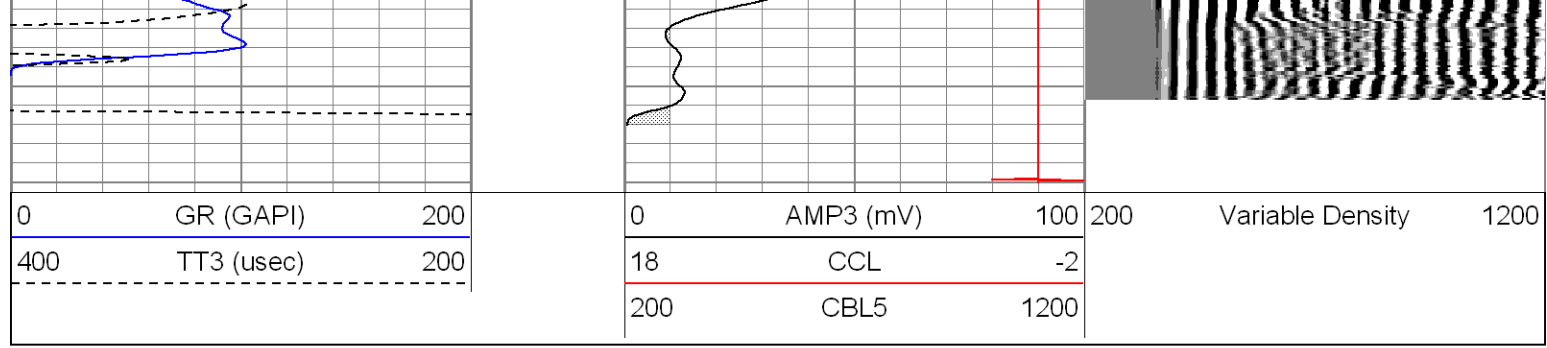
SUPERIOR
 Black Lick, Pa.
 Mercer, Pa.
 Wooster, Oh.
 Cleveland, Ok.

Repeat Section 0 PSI

Database File: ne36-10b32307.db
Dataset Pathname: pass1
Presentation Format: cblrt
Dataset Creation: Fri Mar 23 14:57:01 2007 by Log Warrior 7.0 STD Cas
Charted by: Depth in Feet scaled 1:240

0	GR (GAPI)	200	0	AMP3 (mV)	100	200	Variable Density	1200
400	TT3 (usec)	200	18	CCL	-2			
			200	CBL5	1200			





Cement Bond Log Calibration Report

Serial Number:	Titan5		
Tool Model:	2		
Performed:	Mon Mar 05 10:53:58 2007		
Depth:	210.983	ft	
Casing Diameter:	5.5	in	
	3' Spacing	5' Spacing	
Signal Zero:	0	0	mV
Calibrated Amplitude:	85	85	mV
Reading at Signal Zero:	-0.01	0.00866699	V
Reading in Free Pipe:	1.2	1.2	V
Gain:	70.2479	71.3486	
Offset:	0.702479	-0.618378	

Gamma Ray Calibration Report

Serial Number:	Titan5	
Tool Model:	T2	
Performed:	Thu Mar 08 09:00:44 2007	
Calibrator Value:	1.0	GAPI
Background Reading:	0.0	cps
Calibrator Reading:	1.0	cps
Sensitivity:	1.2500	GAPI/cps