



**SUPERIOR**  
Black Lick, Pa.  
Mercer, Pa.  
Wooster, Oh.  
Cleveland, Ok.  
Trinidad, Co.

## CEMENT BOND LOG

Company XTO Energy Inc.  
Well Apache Canyon 08-12  
Field Purgatorie River  
County Las Animas  
State CO

Company XTO Energy Inc.  
Well Apache Canyon 08-12  
Field Purgatorie River  
County Las Animas State CO

Location: API #: 05 071 09280 00

1861' FSL & 851' FWL

SEC 8 TWP 34S RGE 67W

Permanent Datum Ground Level Elevation 7597'  
Log Measured From Ground Level  
Drilling Measured From Ground Level

Other Services  
Pressure  
control  
Elevation  
K.B. -----  
D.F. -----  
G.L. 7597'

Date	7-31-07				
Run Number	One				
Depth Driller	2185'				
Depth Logger	2098'				
Bottom Logged Interval	2096'				
Top Log Interval	Surface				
Open Hole Size	7 7/8				
Type Fluid	Water				
Density / Viscosity	///				
Max. Recorded Temp.	103F				
Estimated Cement Top	Surface				
Time Well Ready	ROA				
Time Logger on Bottom	4:45PM				
Equipment Number	T0698				
Location	Trinidad				
Recorded By	J. Sisneros				
Witnessed By	Mr. Terry Maxwell				
Run Number	Borehole Record				Tubing Record
	Bit	From	To	Size	Weight
					From
					To
Casing Record					
Surface String		Size		Wgt/Ft	Top
Prot. String		8 5/8"			Bottom
Production String		5.5"			496'
Liner					

<<< Fold Here >>>

All interpretations are opinions based on inferences from electrical or other measurements and we cannot and do not guarantee the accuracy or correctness of any interpretation, and we shall not, except in the case of gross or willful negligence on our part, be liable or responsible for any loss, costs, damages, or expenses incurred or sustained by anyone resulting from any interpretation made by any of our officers, agents or employees. These interpretations are also subject to our general terms and conditions set out in our current Price Schedule.

### Comments

Lower Bosque Entrance, turn right up Torres Canyon, drive thru gate,  
first drive through location



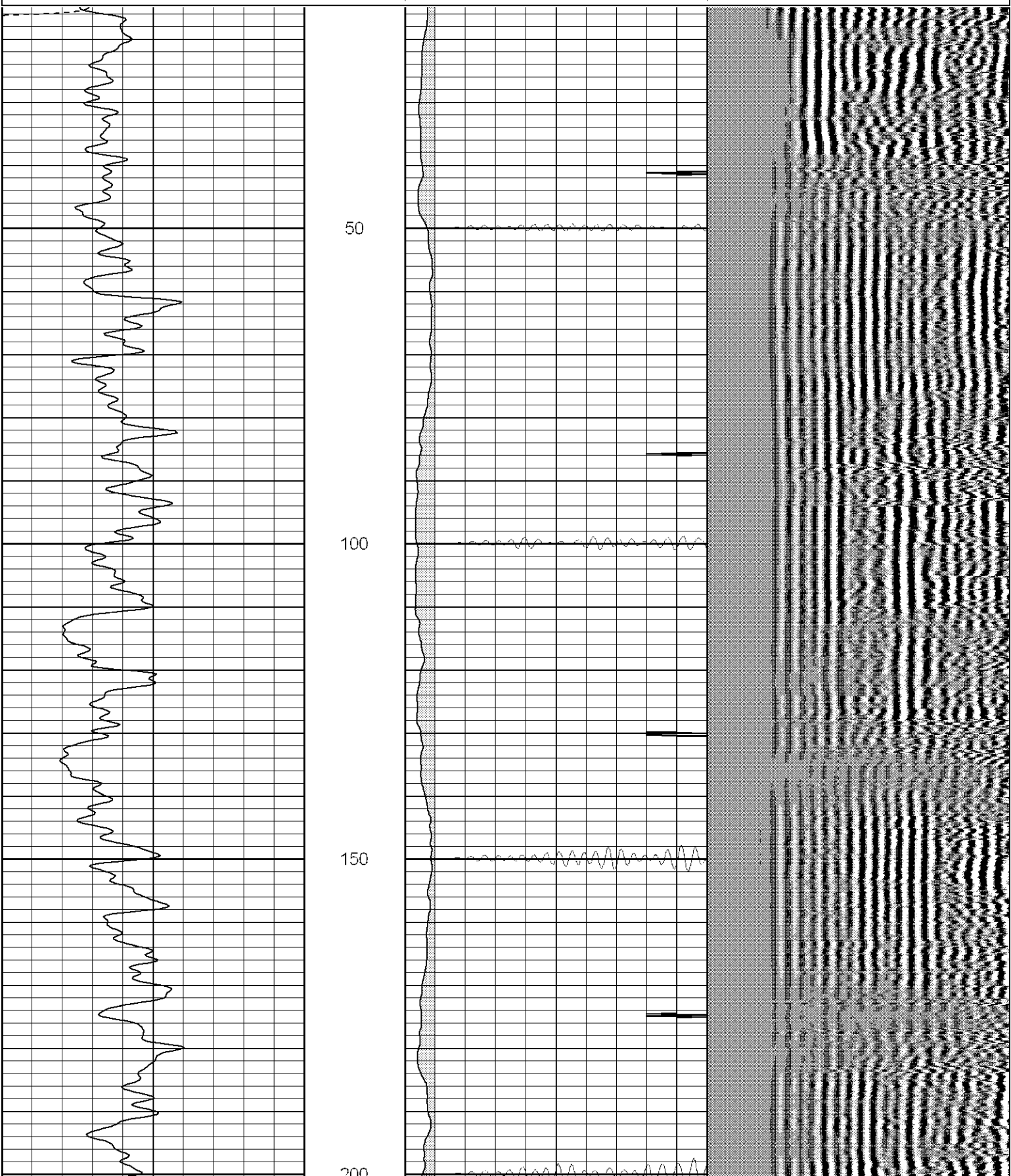
**SUPERIOR**

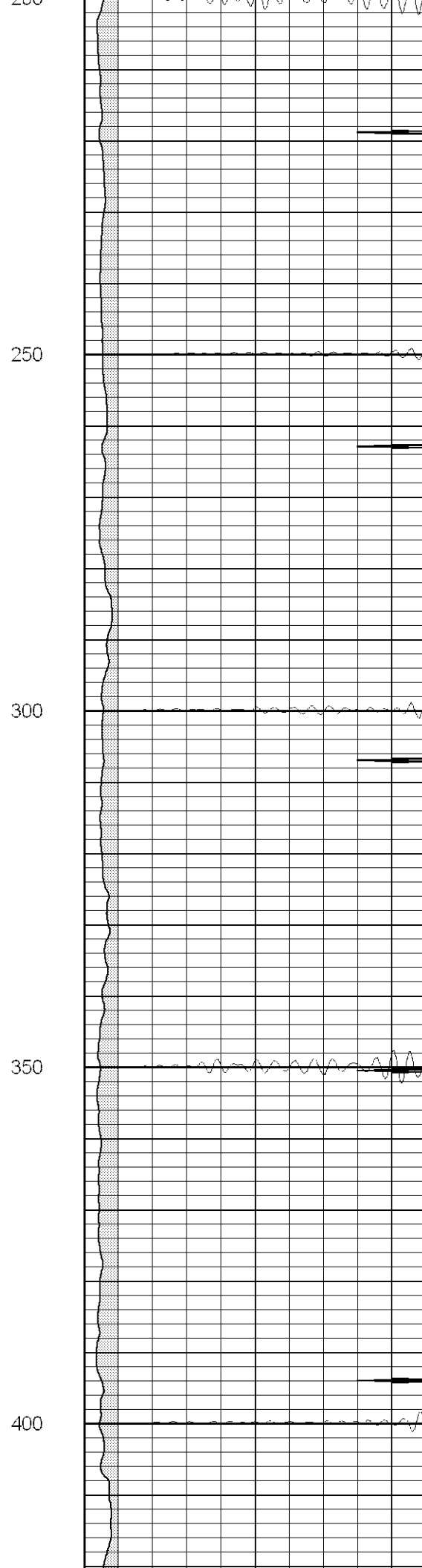
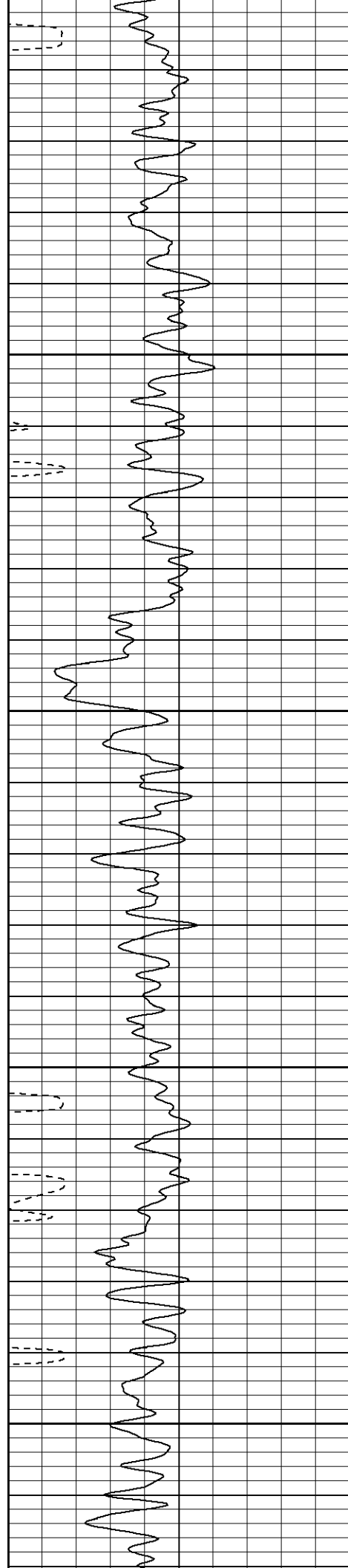
Black Lick, Pa.  
Mercer, Pa.  
Wooster, Oh.  
Cleveland, Ok.  
Trinidad, Co.

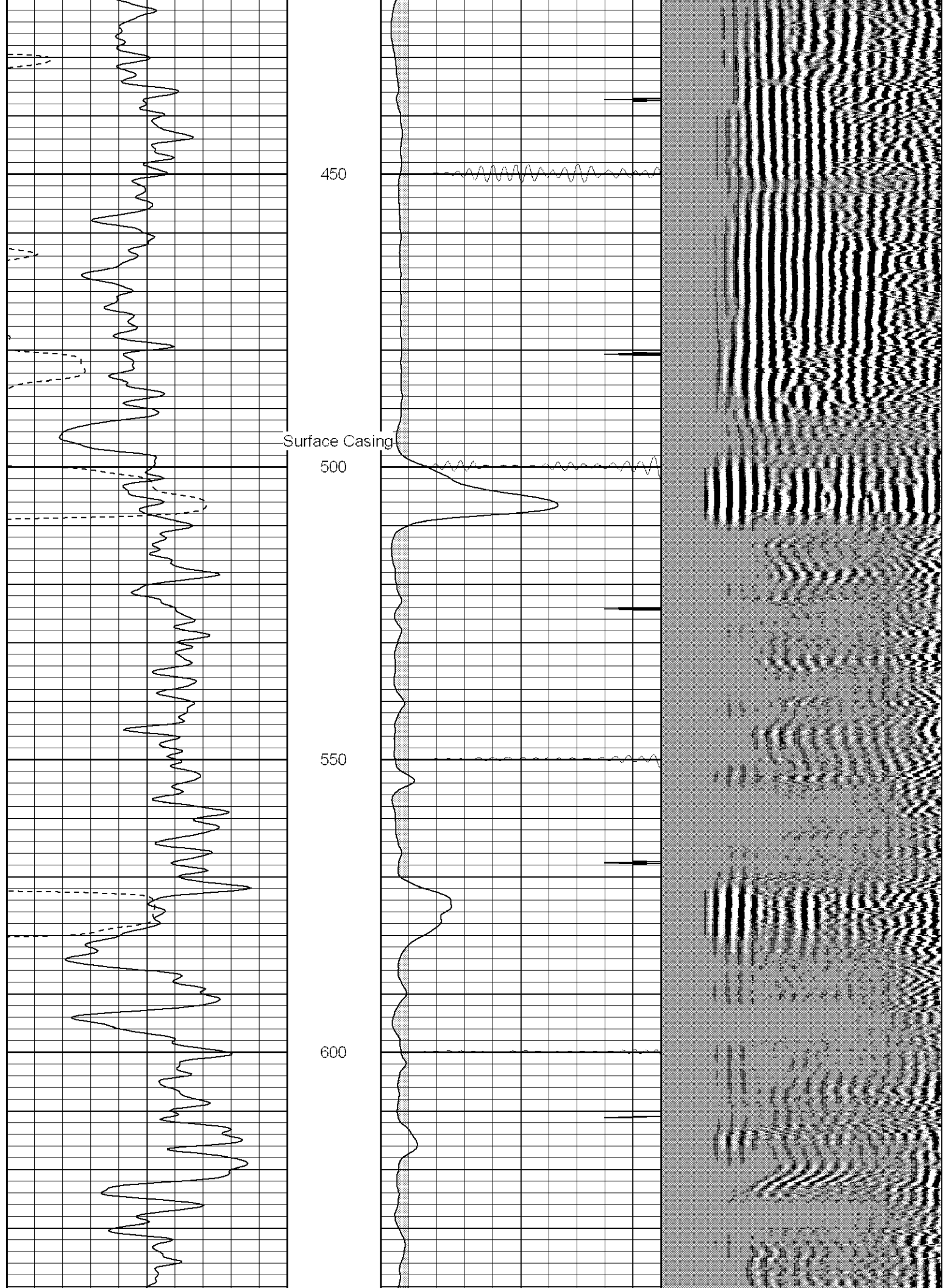
# Main Pass

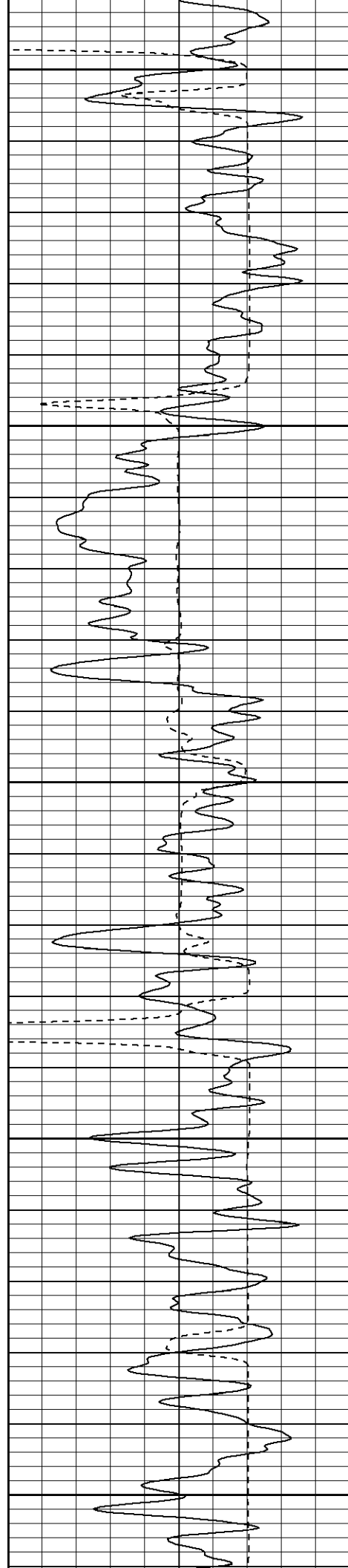
Database File: ac081273107b.db  
Dataset Pathname: pass5  
Presentation Format: cblrt  
Dataset Creation: Wed Aug 01 07:02:51 2007  
Charted by: Depth in Feet scaled 1:240

0	GR (GAPI)	200	0	AMP3 (mV)	100	200	Variable Density	1200
400	TT3 (usec)	200	18	CCL	-2			
-----			200	CBL5	1200			









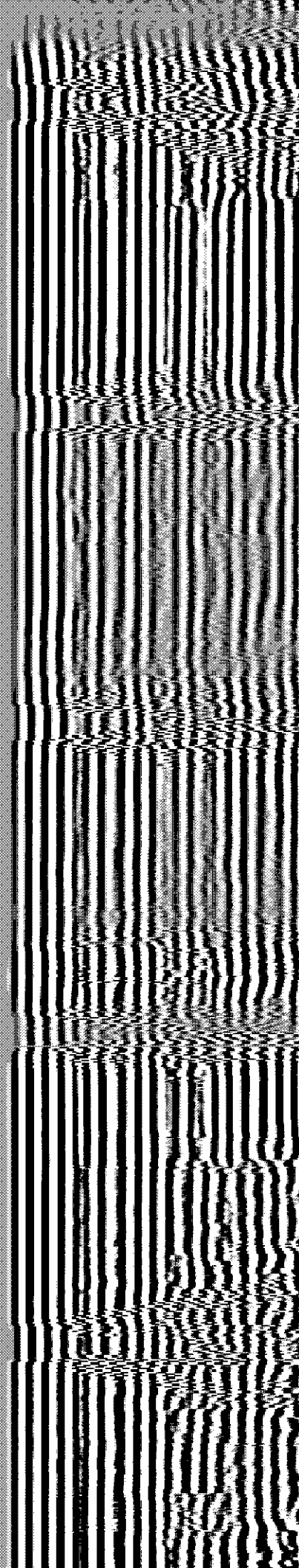
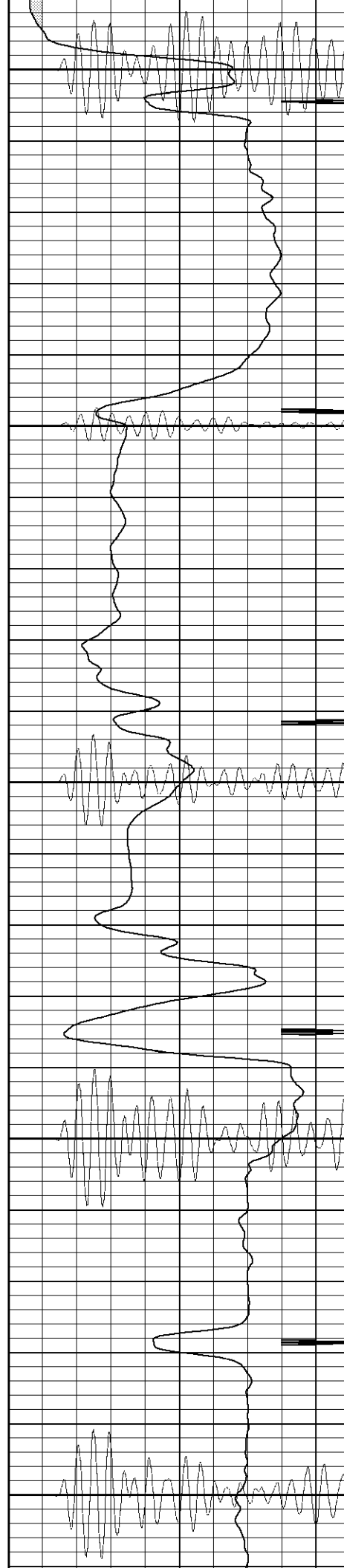
650

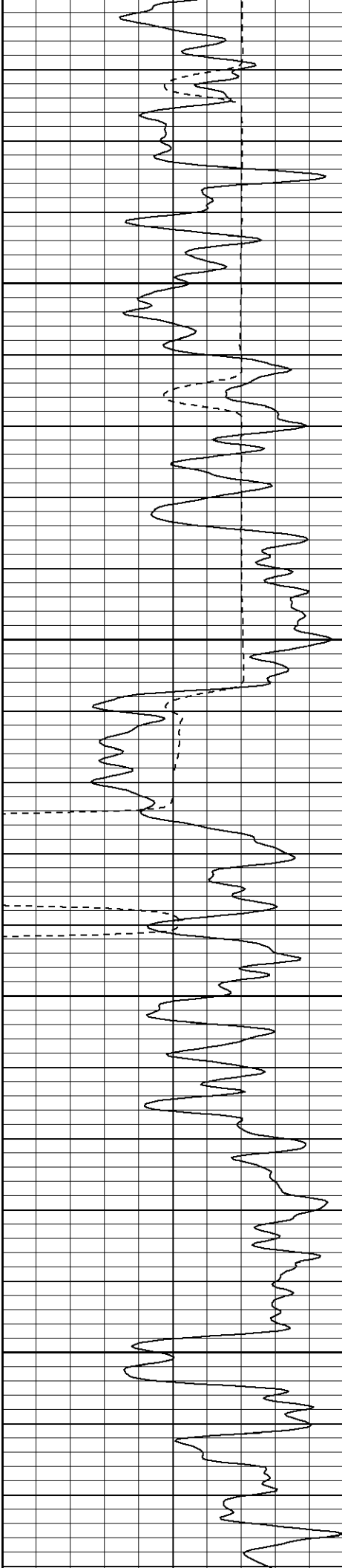
700

750

800

850



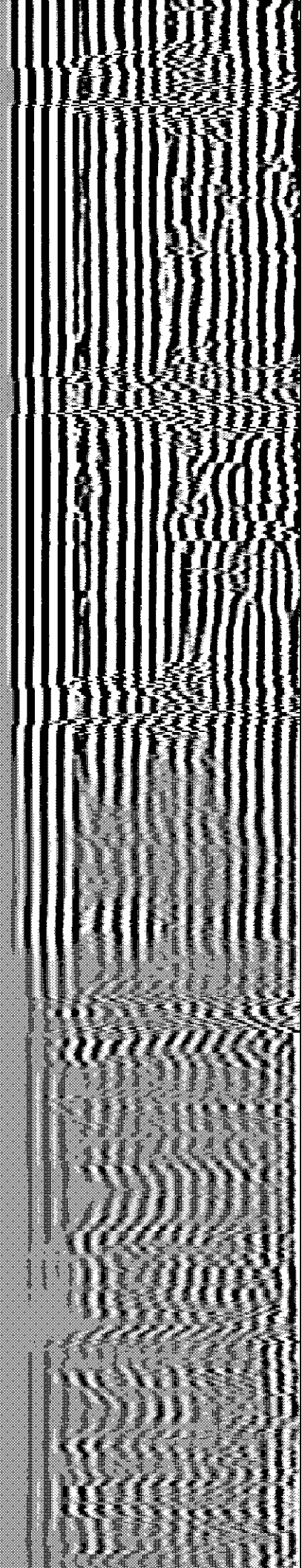
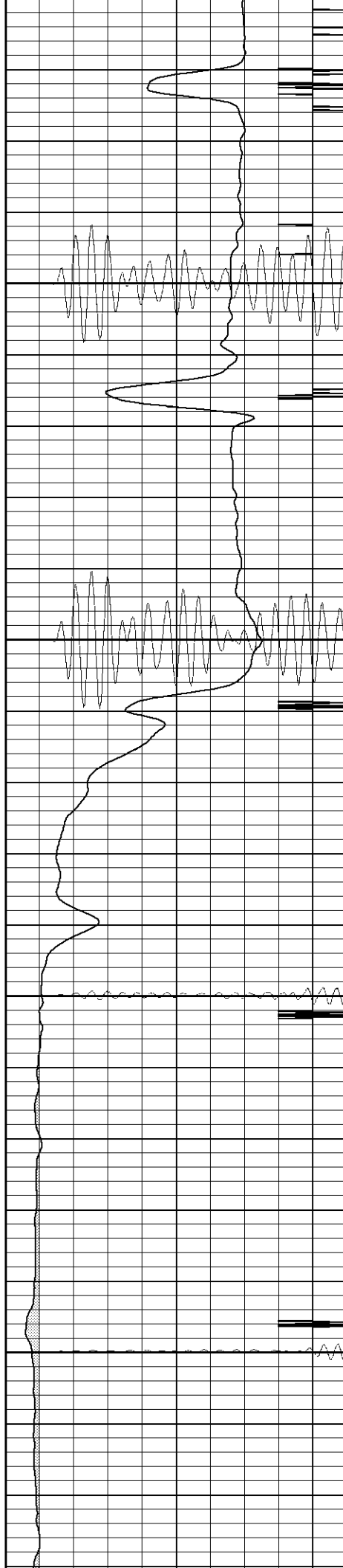


900

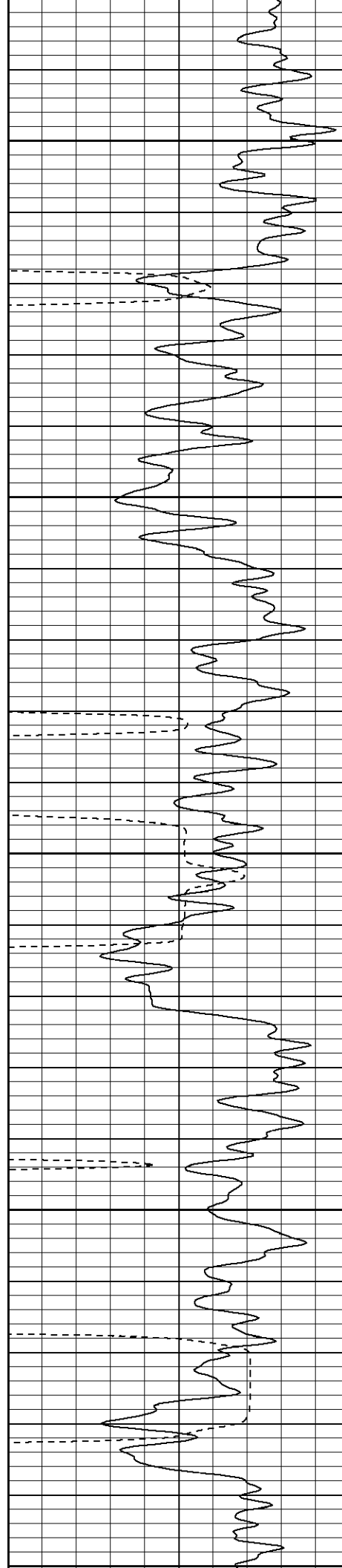
950

1000

1050







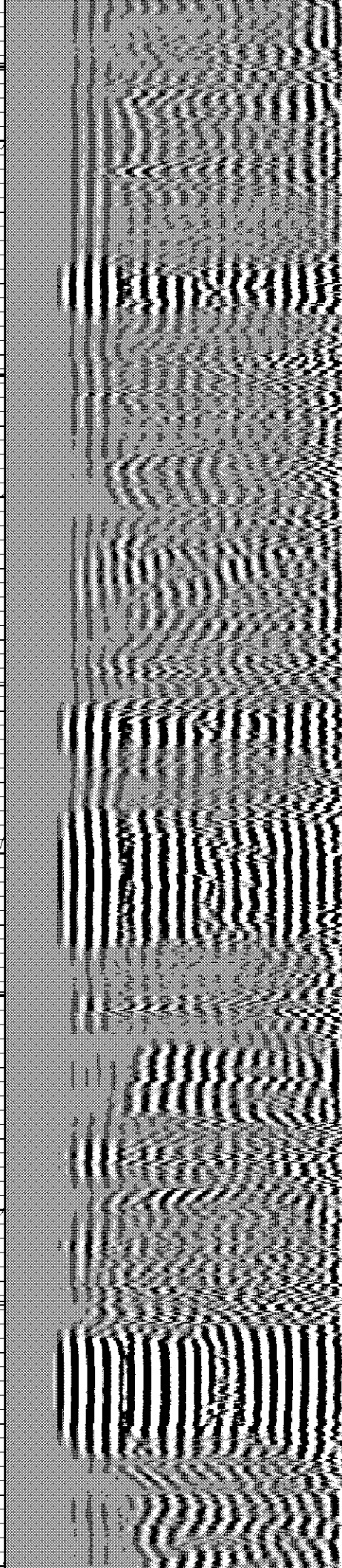
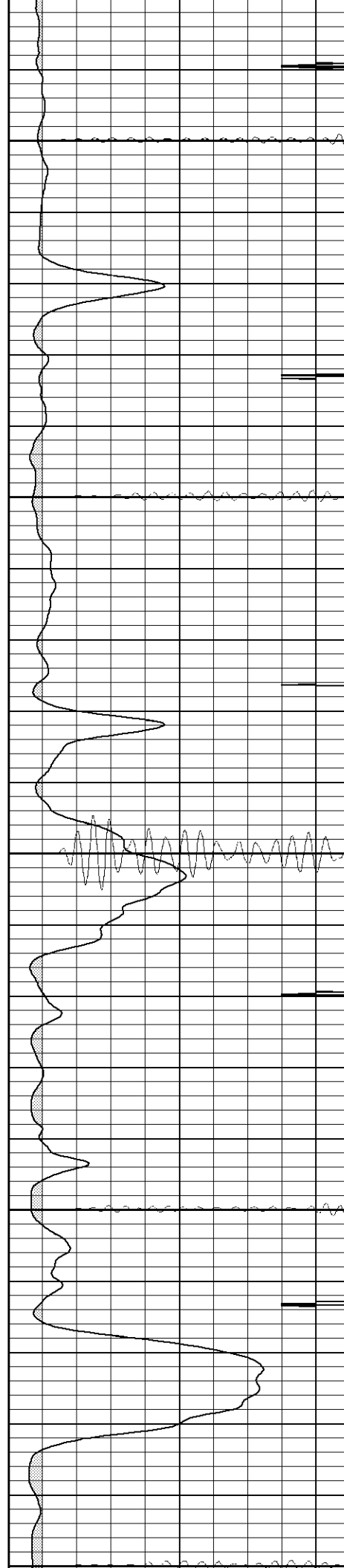
1100

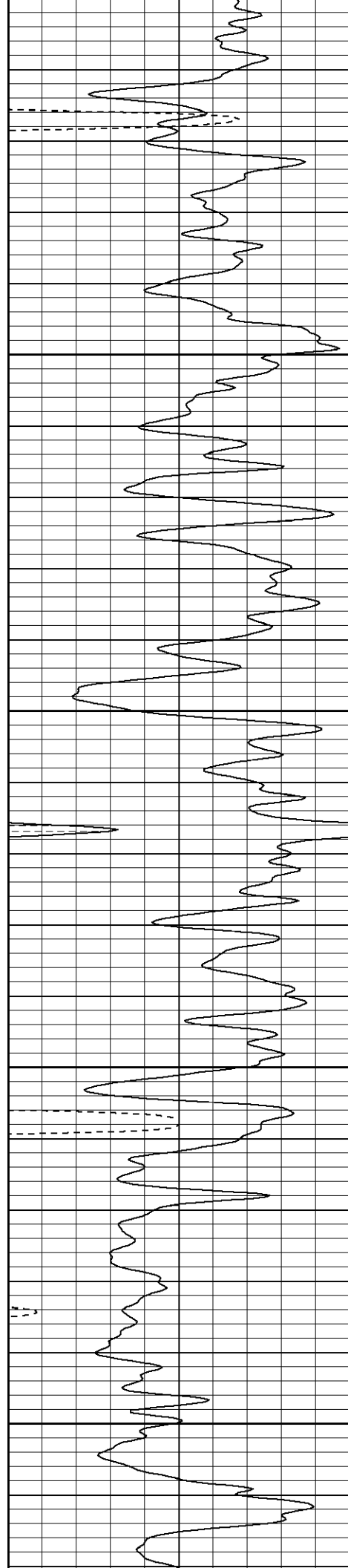
1150

1200

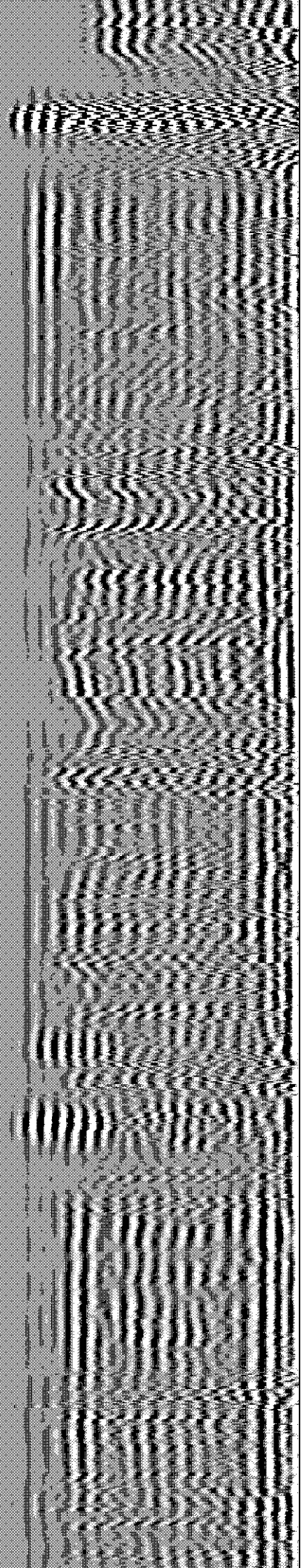
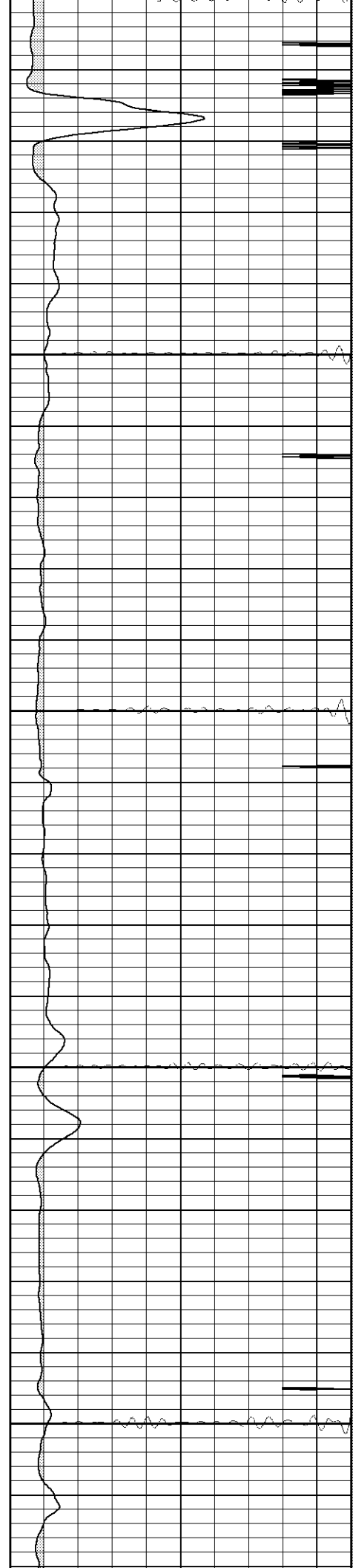
1250

1300

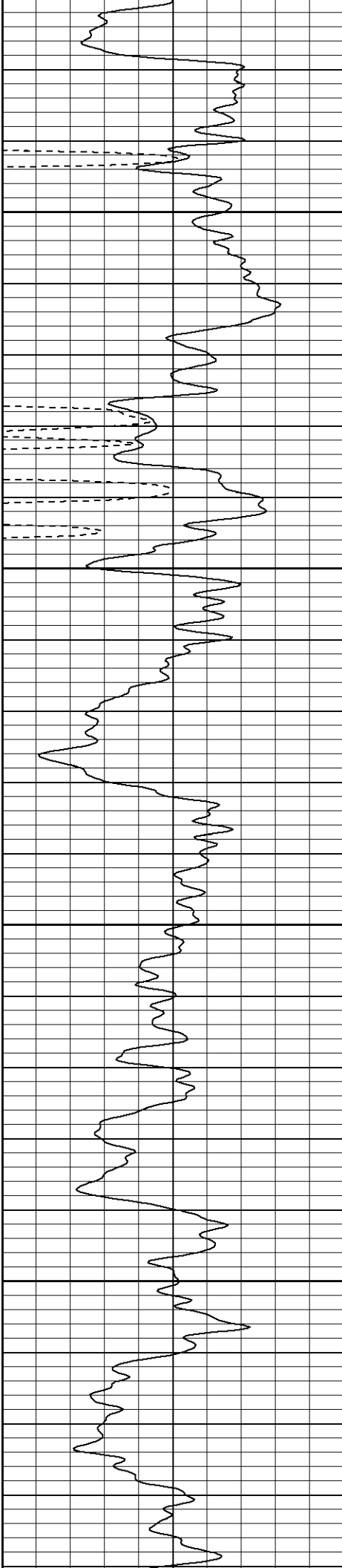




1500  
1350  
1400  
1450  
1500





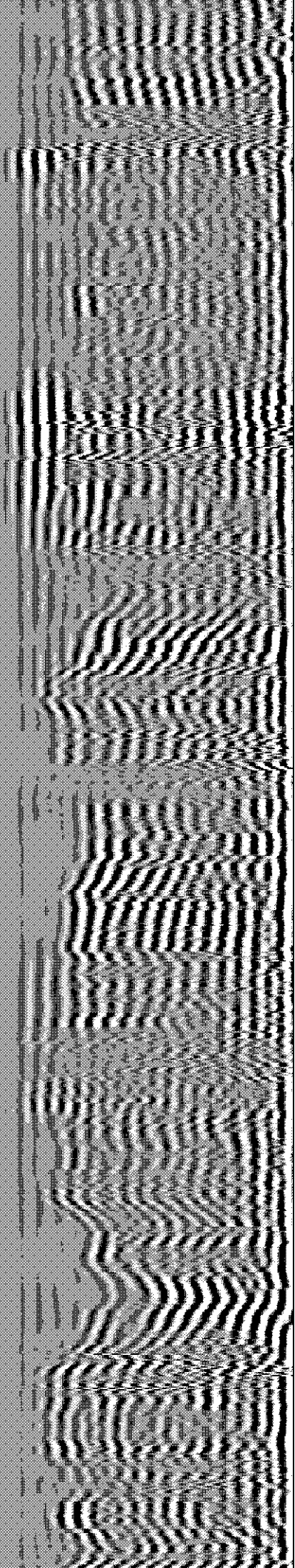
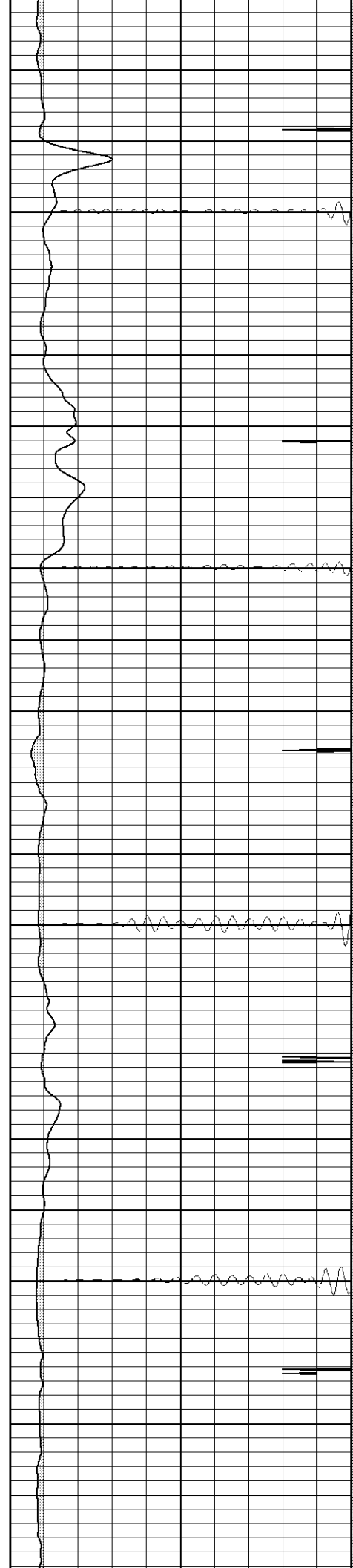


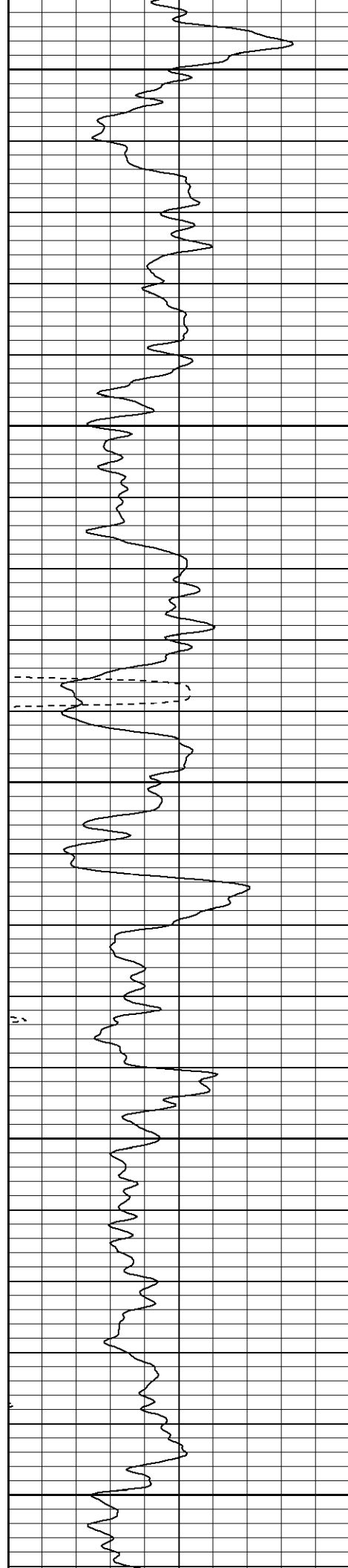
1550

1600

1650

1700





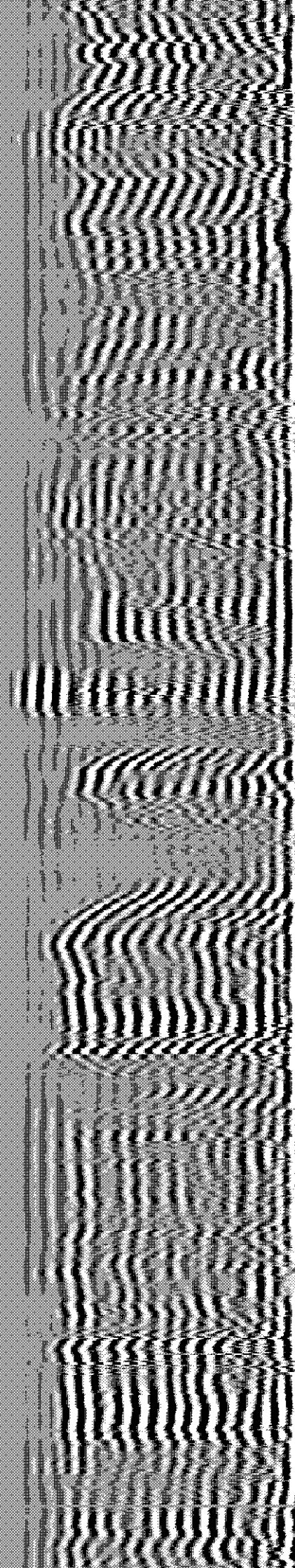
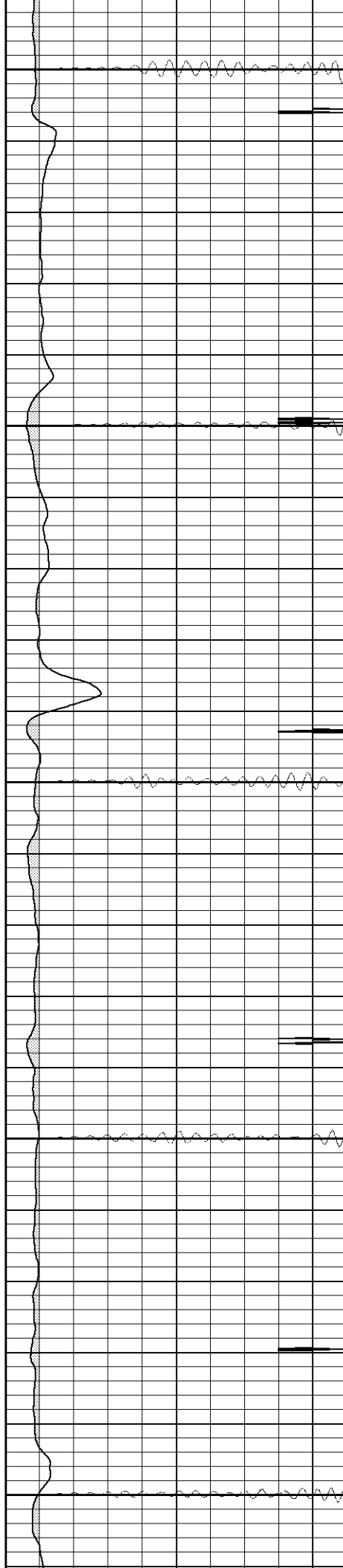
1750

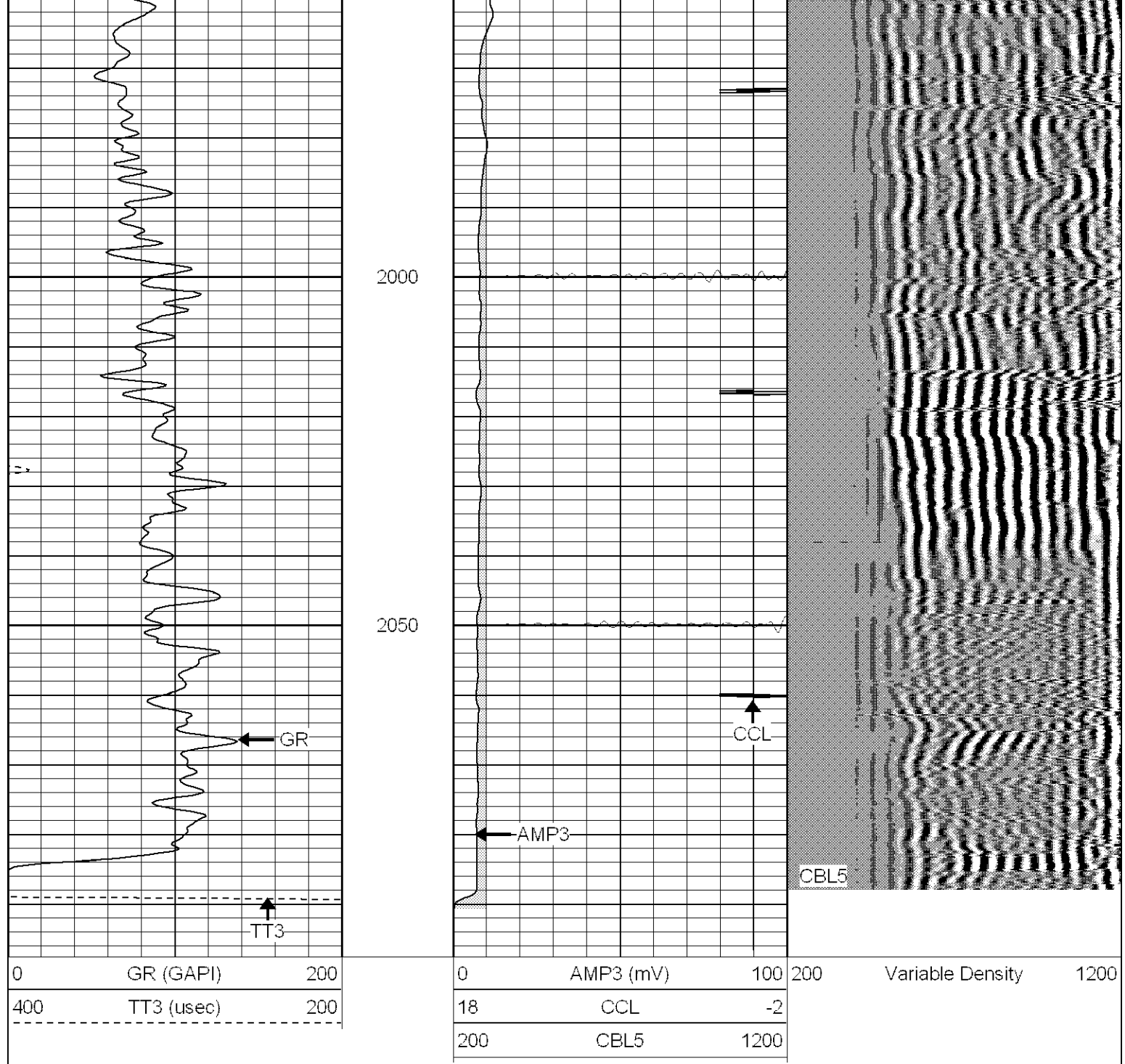
1800

1850

1900

1950



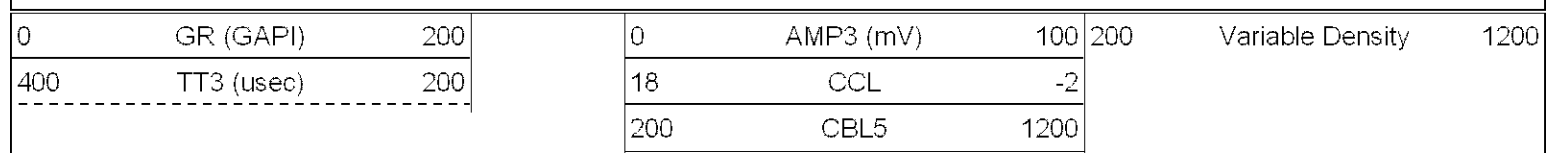


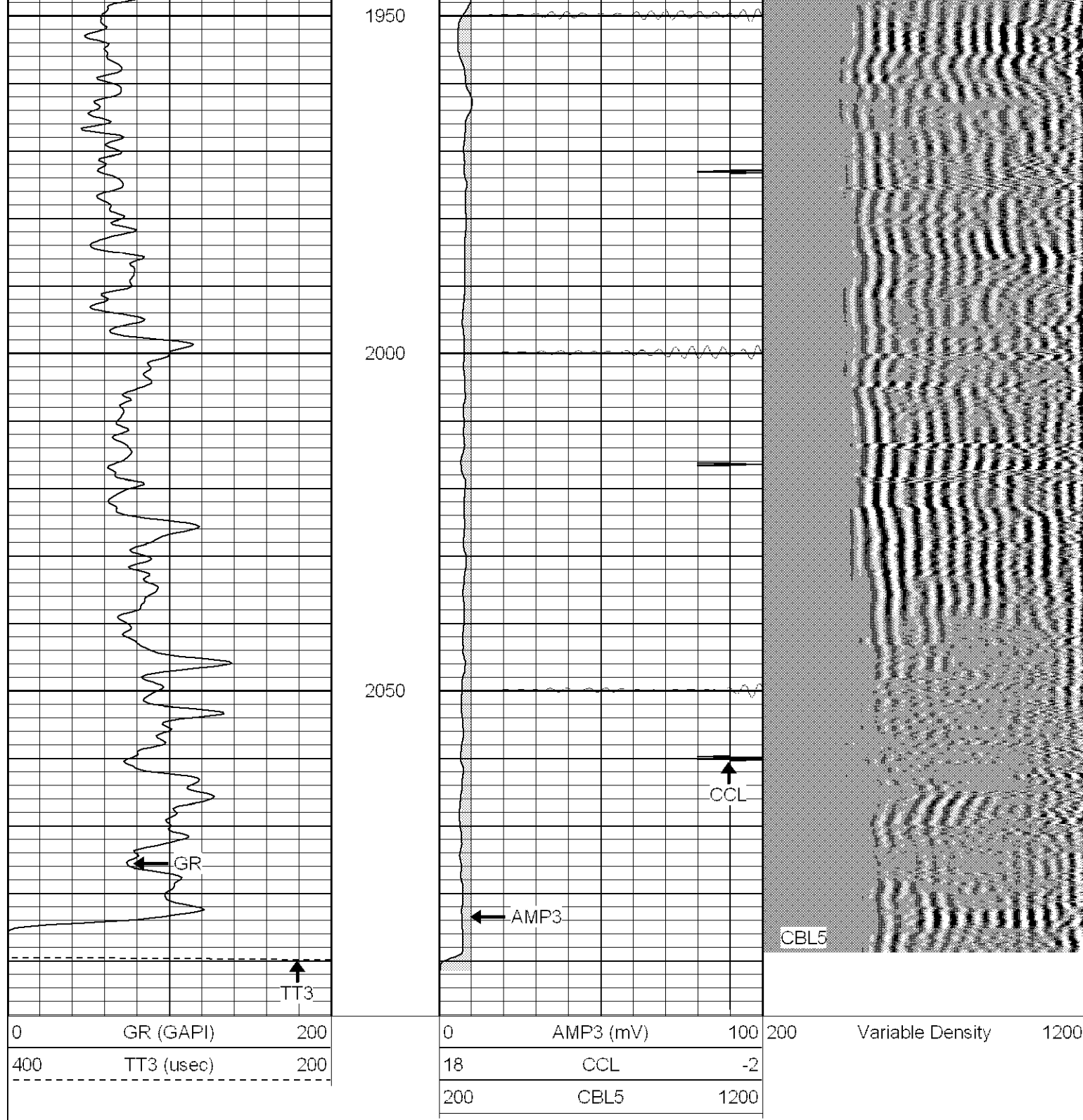
**SUPERIOR**

Black Lick, Pa.  
Mercer, Pa.  
Wooster, Oh.  
Cleveland, Ok.  
Trinidad, Co.

# Repeat Section

Database File: ac081273107b.db  
Dataset Pathname: pass1  
Presentation Format: cblrt  
Dataset Creation: Tue Jul 31 16:38:26 2007 by Log Open-Cased 070508  
Charted by: Depth in Feet scaled 1:240





### Calibration Report

Database File: ac081273107b.db  
Dataset Pathname: pass1  
Dataset Creation: Tue Jul 31 16:38:26 2007 by Log Open-Cased 070508

### Cement Bond Log Calibration Report

Serial Number: Titan6  
Tool Model: T6  
Performed: Wed Jul 25 10:45:02 2007

Depth: 734.977 ft  
Casing Diameter: 5.5 in

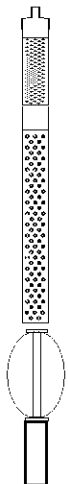
2' Spacing

5' Spacing

Signal Zero:	0	0	mV
Calibrated Amplitude:	85	85	mV
Reading at Signal Zero:	0.0194092	0.0207275	V
Reading in Free Pipe:	0.75	2	V
Gain:	116.344	42.9451	
Offset:	0.5	-0.890144	

# Gamma Ray Calibration Report

Serial Number:	Titan6	
Tool Model:	T6	
Performed:	Tue Jul 24 11:46:21 2007	
Calibrator Value:	1.0	GAPI
Background Reading:	0.0	cps
Calibrator Reading:	1.0	cps
Sensitivity:	1.2000	GAPI/cps

Sensor	Offset (ft)	Schematic	Description	Len (ft)	OD (in)	Wt (lb)	
GR	13.64		CHD-None (0)	0.75	1.50	5.00	
			GR-T6 (Titan6)	2.52	2.25	25.00	
WVF5	9.49						
WVF3	8.49		CBL-T6 (Titan6) Titan 6	7.23	2.44	110.00	
			CENT-X (1)	3.00	1.69	25.00	
CCL	0.83		CCL-T5 (Titan5)	2.15	2.75	15.00	
<div>Dataset: ac081273107b.db: field/well/run1/pass1</div> <div>Total Length: 15.66 ft</div> <div>Total Weight: 180.00 lb</div> <div>O.D. 2.75 in</div>							