

Patterson

**CEMENT
BOND
LOG**

Company XTO Energy Inc.
Well Apache Canyon 23-16
Field Purgatoire River
County Las Animas State Colorado

Location:	API # : 05 071 08686 00	Other Services
563' FSL & 519' FEL		
SEC 23 TWP 34S RGE 68W		
Permanent Datum	Ground Level	Elevation 7704'
Log Measured From	Ground Level	
Drilling Measured From	Ground Level	Elevation K.B. ----- D.F. ----- G.L. 7704'

Company XTO Energy Inc.
Well Apache Canyon 23-16
Field Purgatoire River
County Las Animas
State Colorado

Date 3-17-06

Run Number	One	
Depth Driller	1738'	
Depth Logger	1636'	
Bottom Logged Interval	1634'	
Top Log Interval	Surface	
Open Hole Size	7 7/8"	
Type Fluid	Water	
Density / Viscosity	///	
Max. Recorded Temp.	101 DEG F	
Estimated Cement Top	38'	
Time Well Ready	5:15 P.M.	
Time Logger on Bottom	5:30 P.M.	
Equipment Number	1720	
Location	Trinidad	
Recorded By	M. Norton	
Witnessed By	Mr. Ryan Rensink	

Borehole Record			Tubing Record				
Run Number	Bit	From	To	Size	Weight	From	To

Casing Record	Size	Wgt/Ft	Top	Bottom
Surface String	8 5/8"		00	228'
Prot. String				
Production String	5 1/2"		00	N/A
Liner				

<<< Fold Here >>>

All interpretations are opinions based on inferences from electrical or other measurements and we cannot and do not guarantee the accuracy or correctness of any interpretation, and we shall not, except in the case of gross or willful negligence on our part, be liable or responsible for any loss, costs, damages, or expenses incurred or sustained by anyone resulting from any interpretation made by any of our officers, agents or employees. These interpretations are also subject to our general terms and conditions set out in our current Price Schedule.

Comments

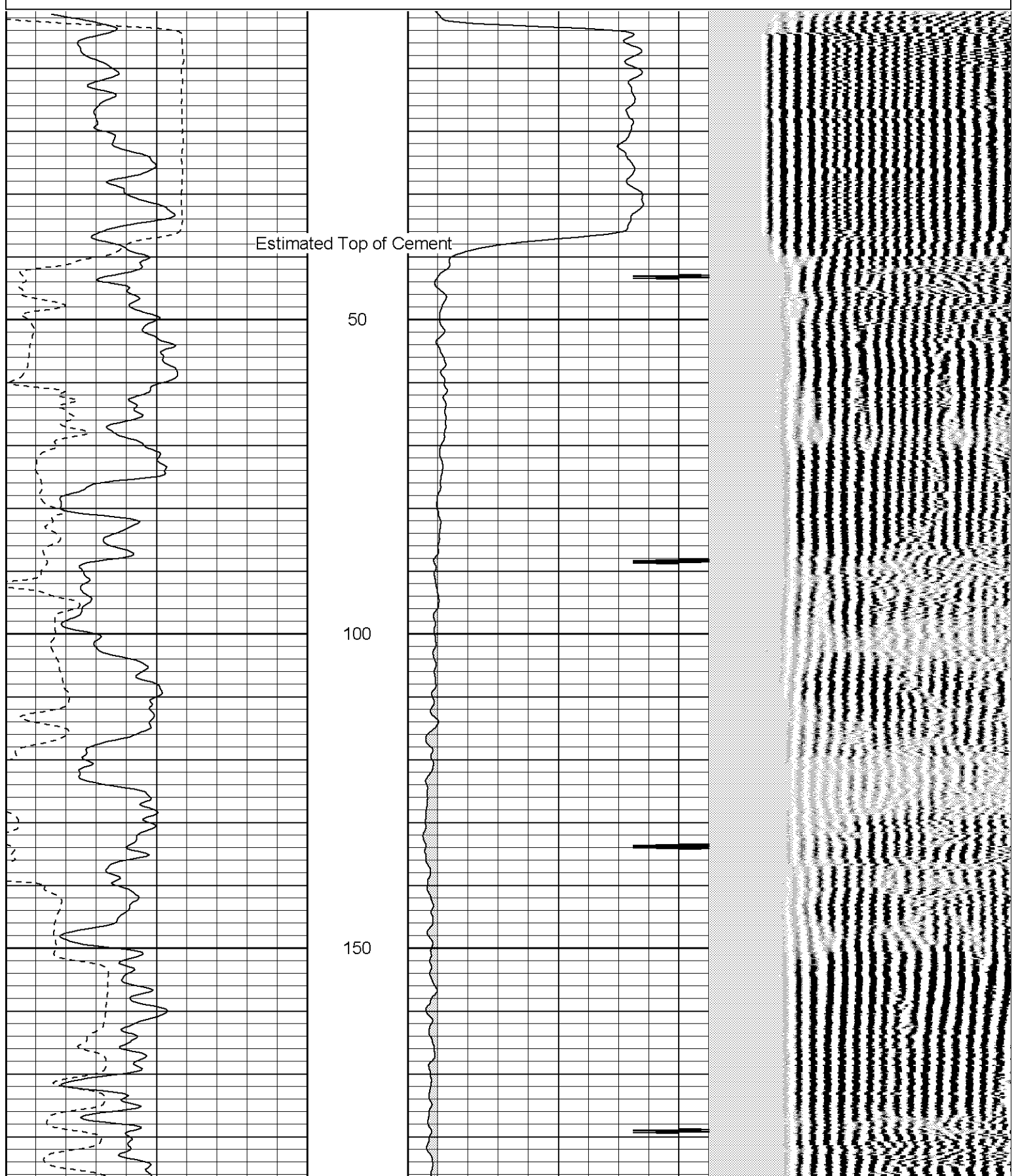
Well Directions:
First Bosque Entrance, Stay On Main Road Thru Green Gate,
Second Left, To Y Stay Right Drive Thru Location, Dead End On Location.

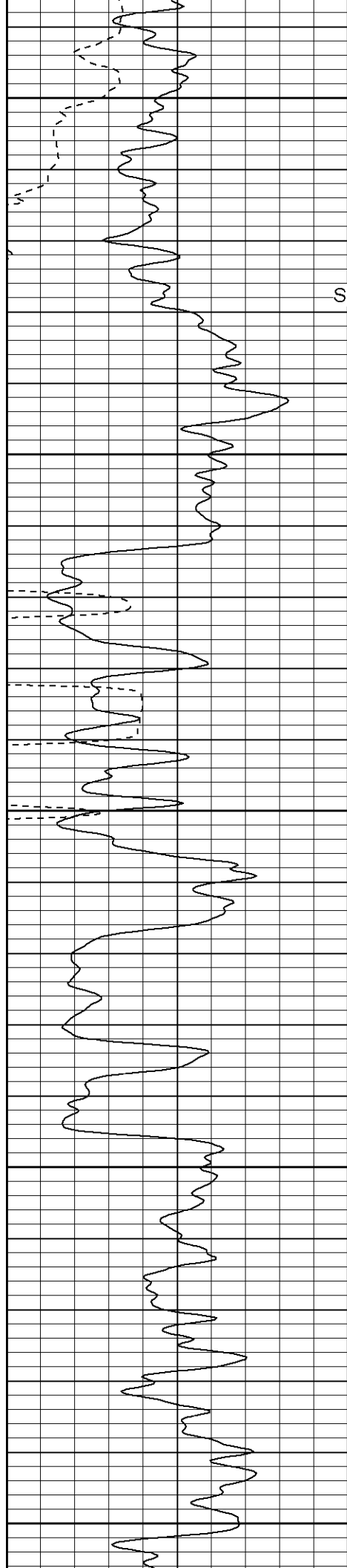
Patterson

Main Pass

Database File: xtoac2316031706b.db
Dataset Pathname: pass3.2
Presentation Format: cblrt
Dataset Creation: Sat Mar 18 16:51:44 2006 by Calc Warrior 7.0 STD Ope
Charted by: Depth in Feet scaled 1:240

0	GR (GAPI)	200	0	AMP3 (mV)	100	200	Variable Density	1200
400	TT3 (usec)	200	18	CCL	-2			





Surface Casing

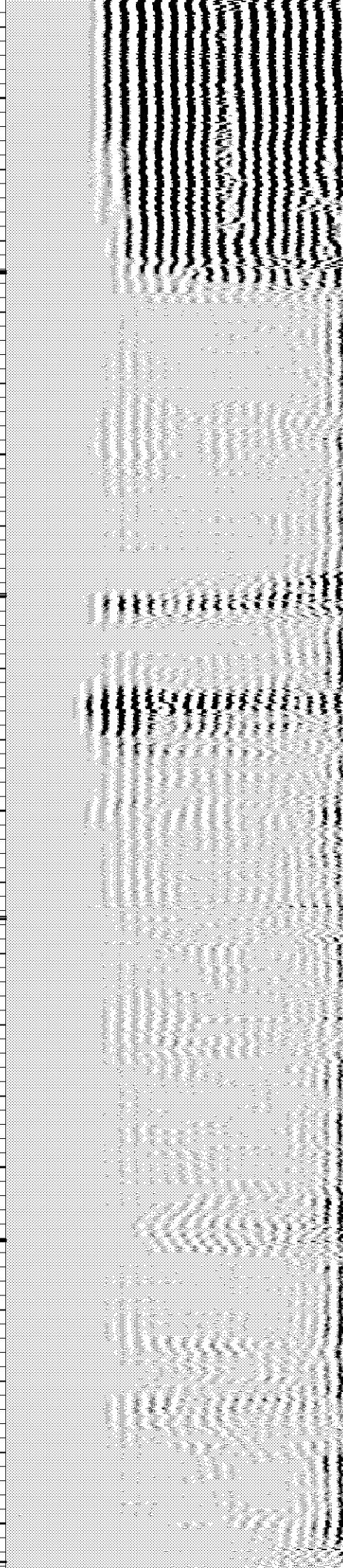
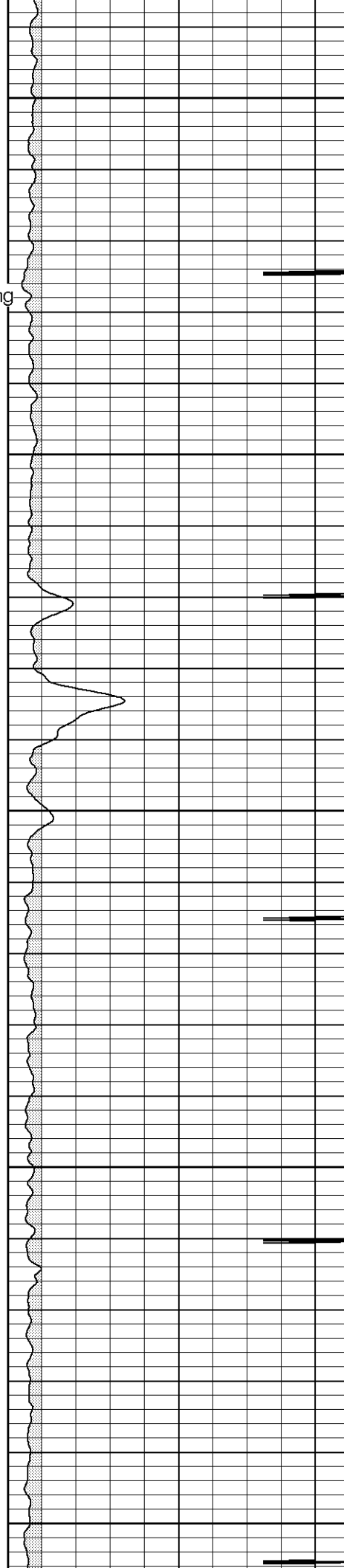
200

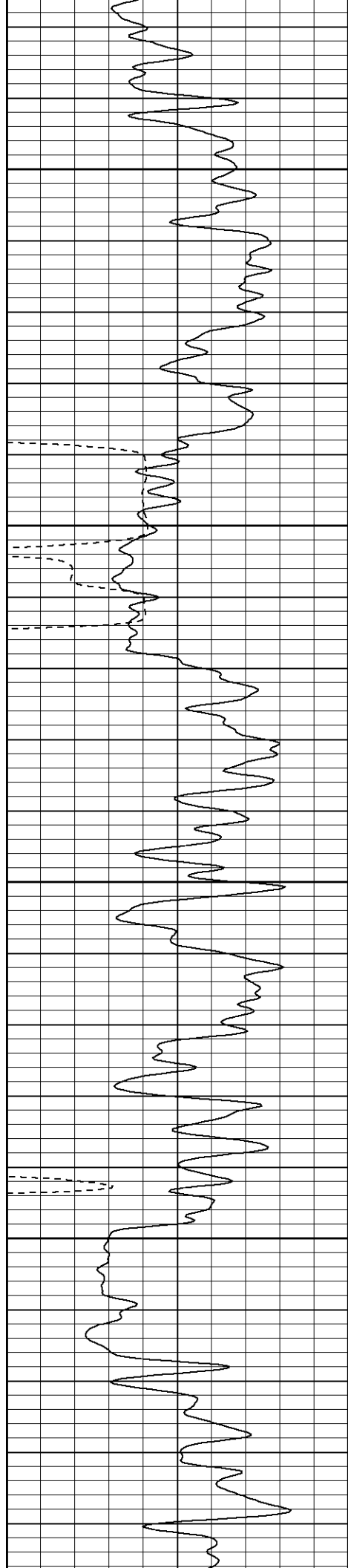
250

300

350

400



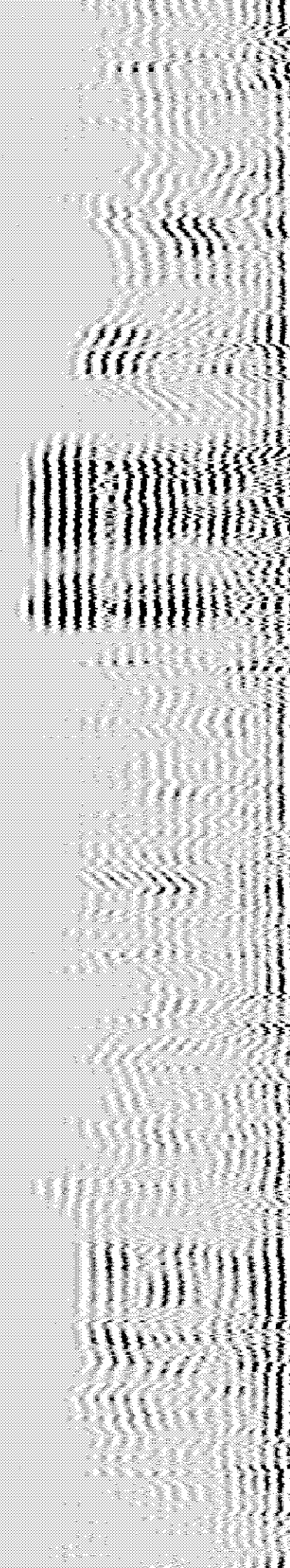
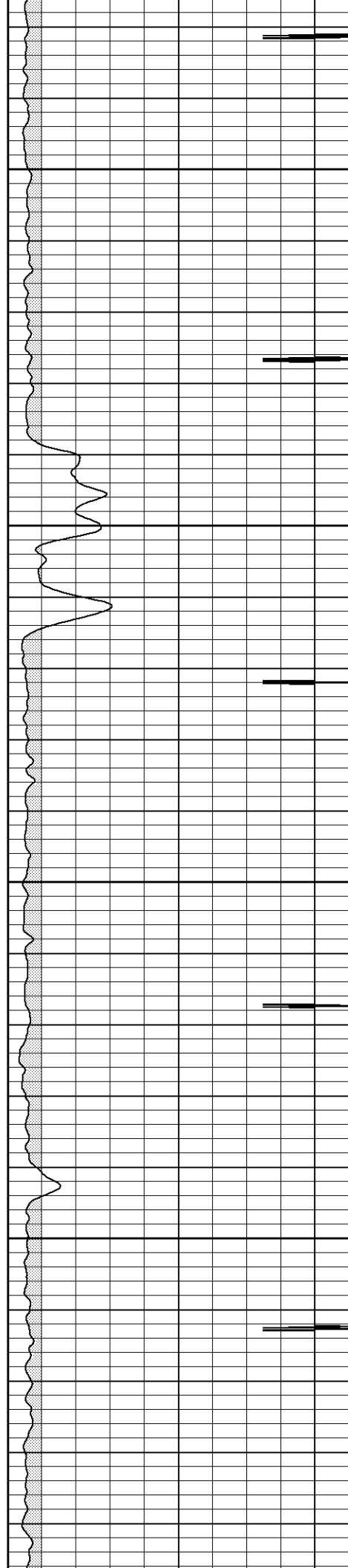


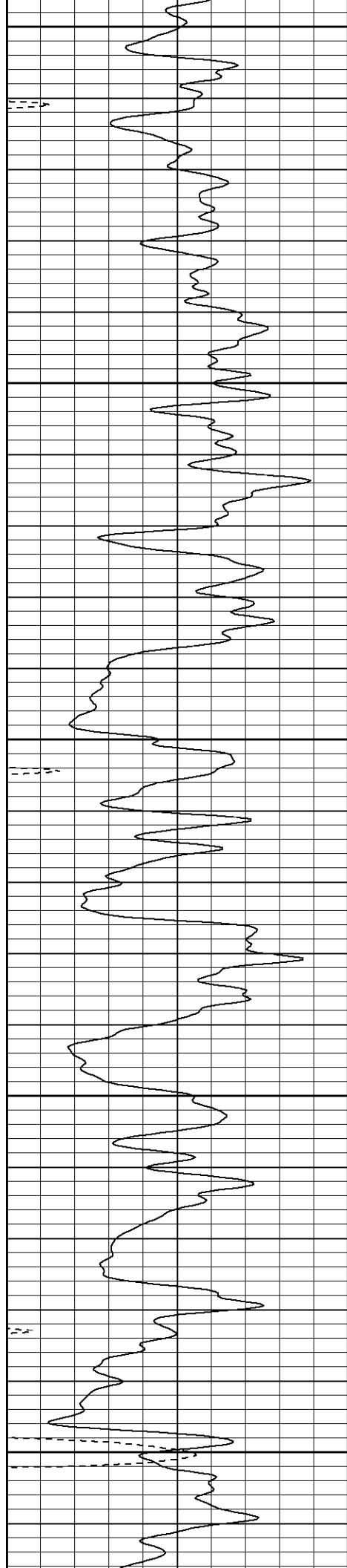
650

700

750

800





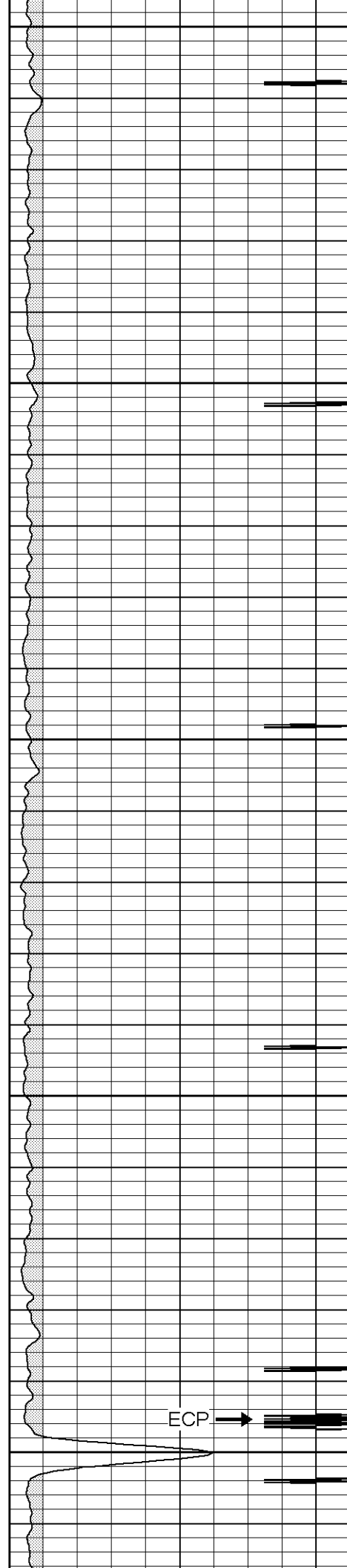
850

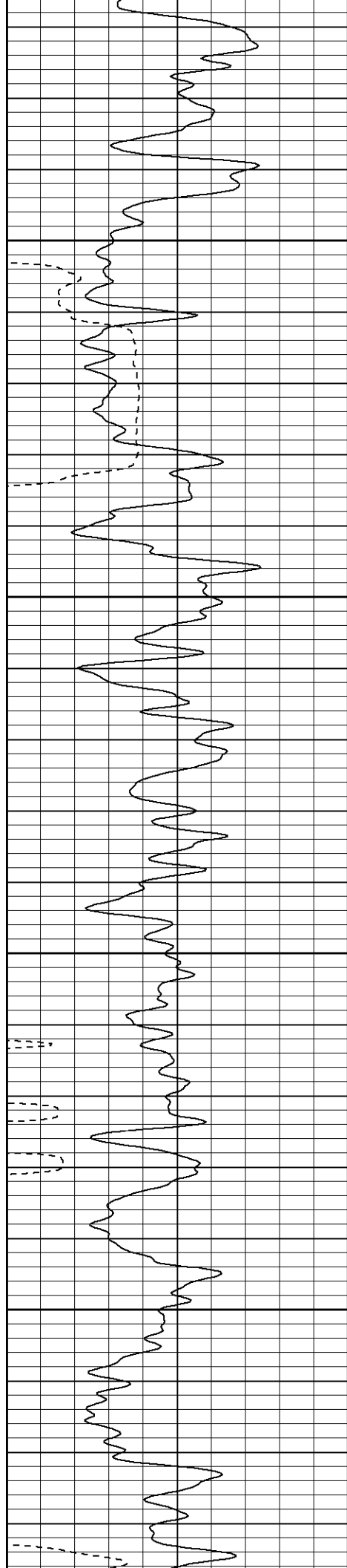
900

950

1000

1050



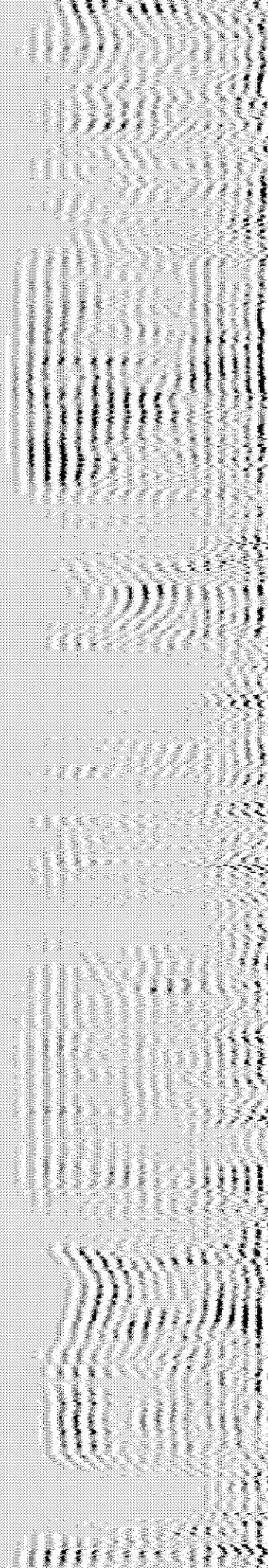
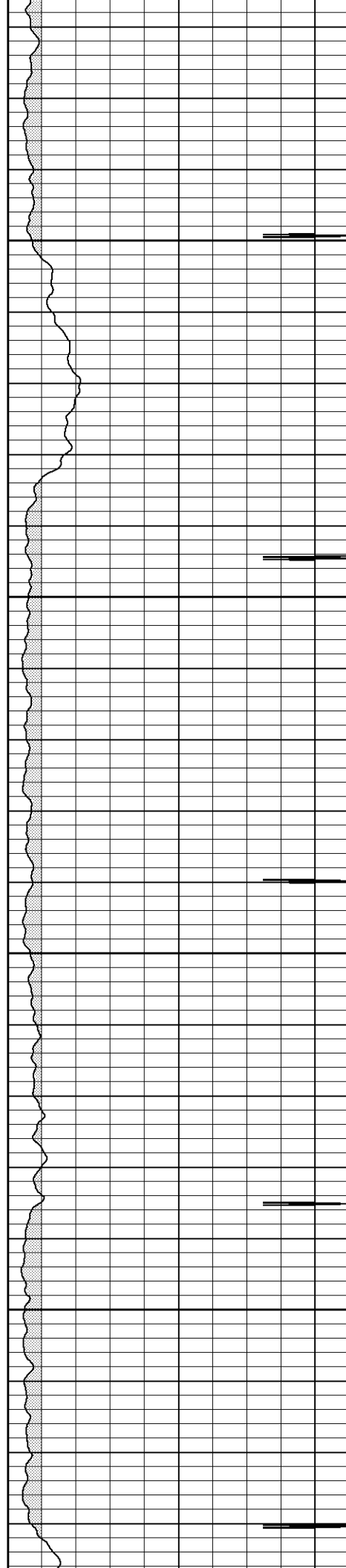


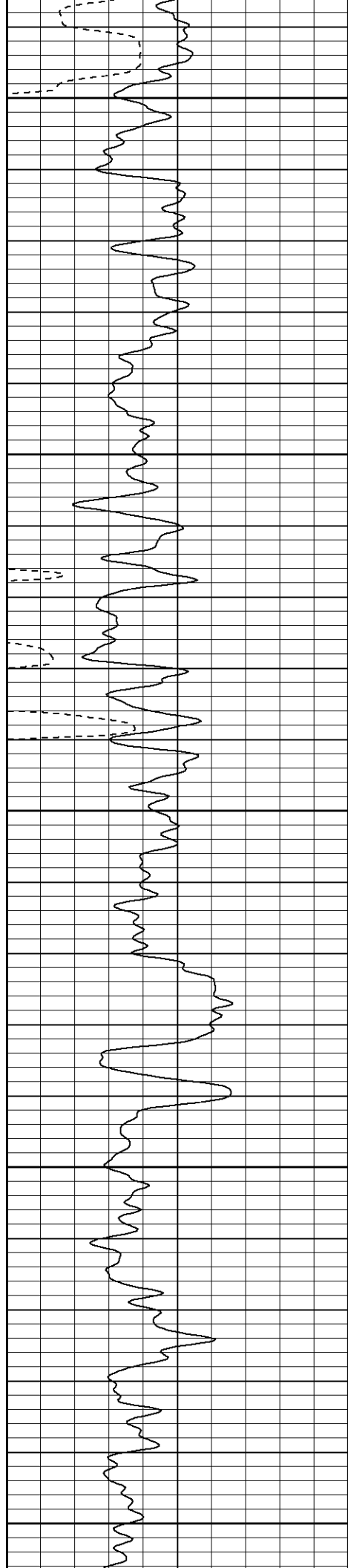
1100

1150

1200

1250





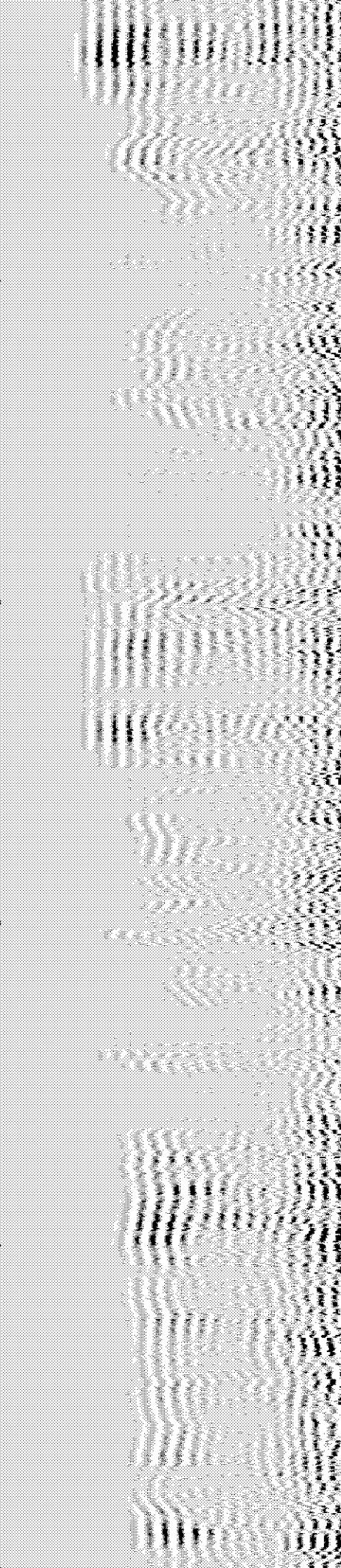
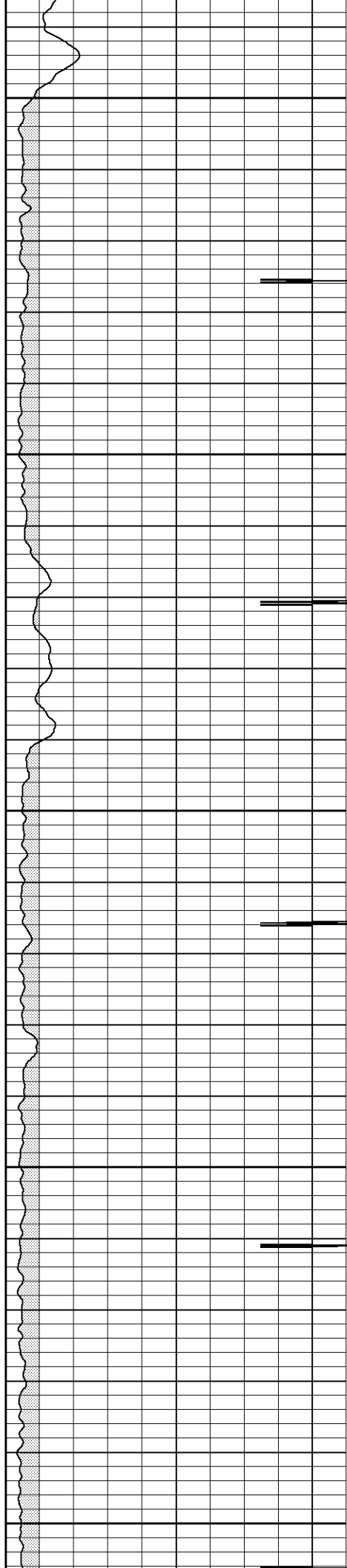
1300

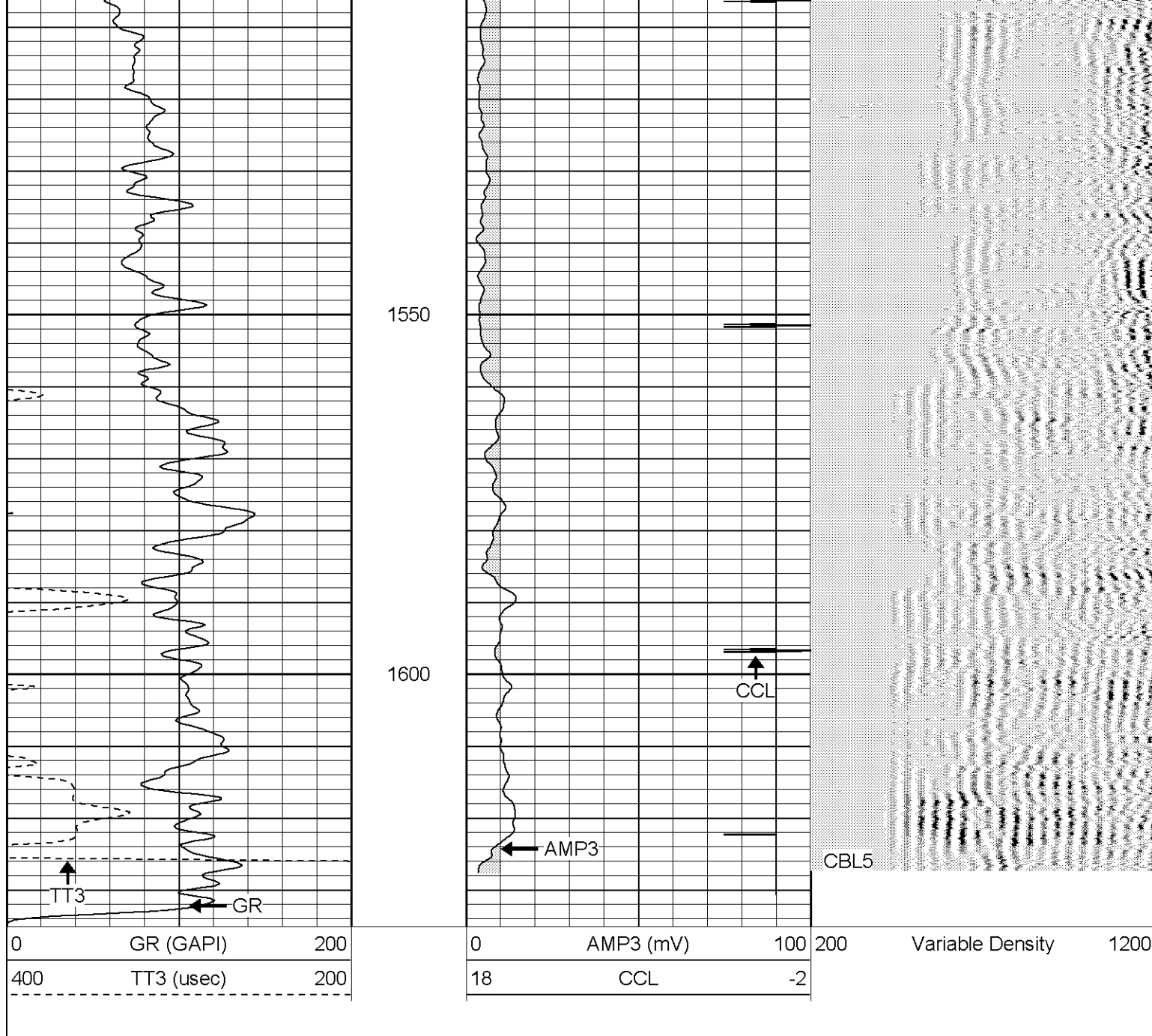
1350

1400

1450

1500



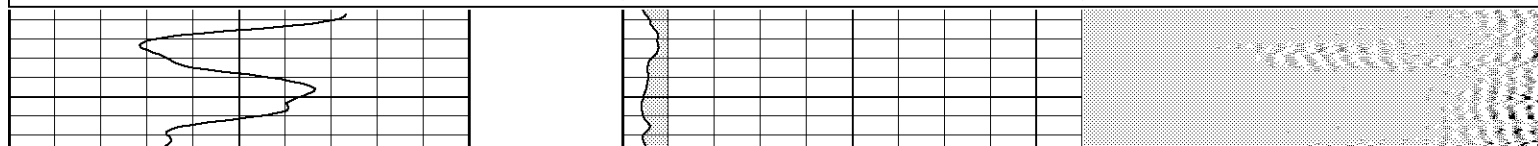


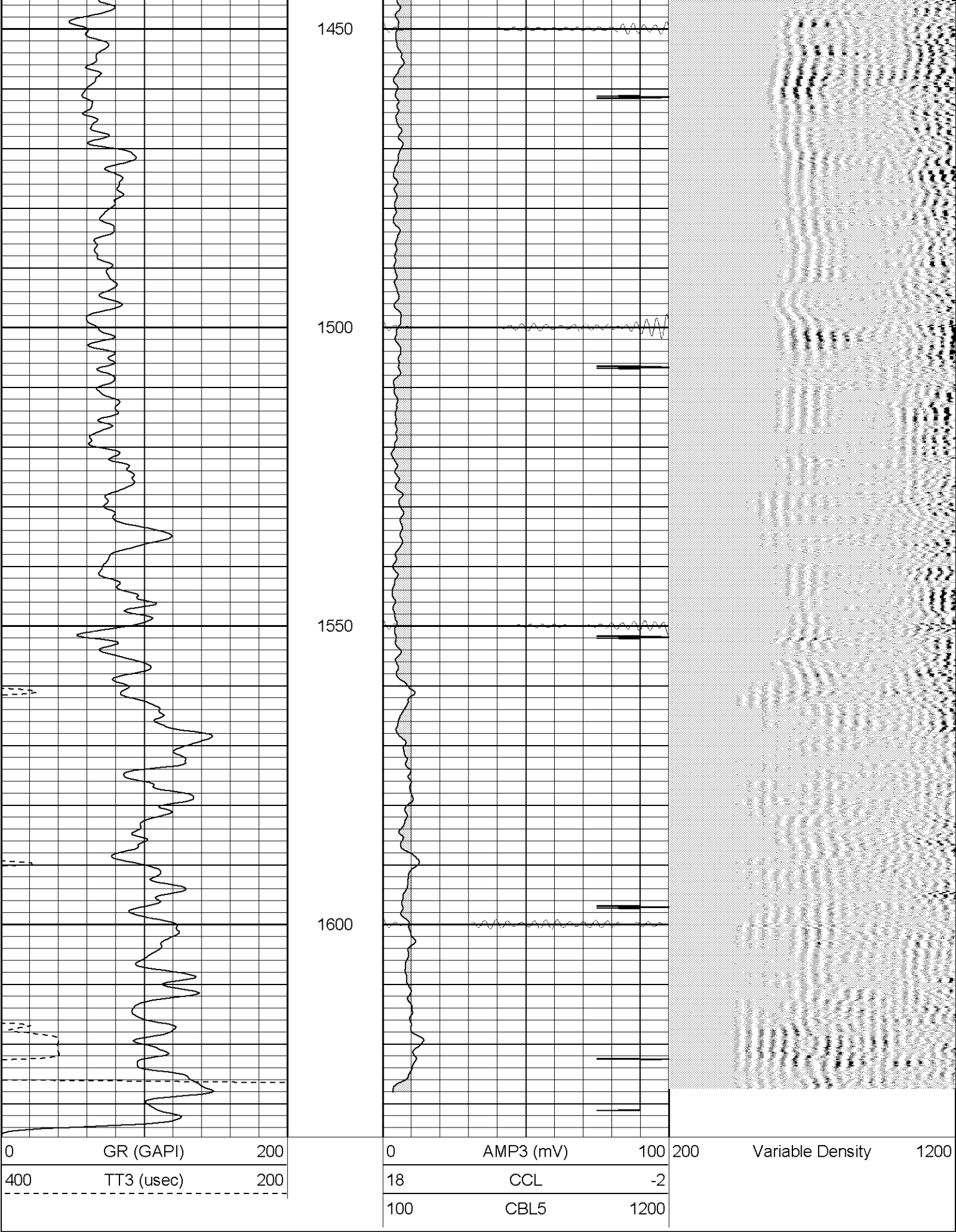
Patterson

Repeat Section

Database File: xtoac2316031706b.db
 Dataset Pathname: pass1.2
 Presentation Format: cblrt
 Dataset Creation: Sat Mar 18 16:51:10 2006 by Calc Warrior 7.0 STD Ope
 Charted by: Depth in Feet scaled 1:240

0	GR (GAPI)	200	0	AMP3 (mV)	100	200	Variable Density	1200
400	TT3 (usec)	200	18	CCL	-2			
			100	CBL5	1200			





Serial Number: Titan1
Tool Model: T1
Performed: Fri Mar 17 13:50:51 2006

Calibrator Value: 1.0 GAPI

Background Reading: 0.0 cps
Calibrator Reading: 1.0 cps

Sensitivity: 1.2500 GAPI/cps

Cement Bond Log Calibration Report


Serial Number: 030407
Tool Model: P1
Performed: Fri Mar 17 13:56:41 2006

Depth: 119.398 ft
Casing Diameter: 5.5 in

3' Spacing 5' Spacing

Signal Zero:	1	1	mV
Calibrated Amplitude:	85	85	mV
Reading at Signal Zero:	-0.01	-0.01	V
Reading in Free Pipe:	1.4	2	V

Gain:	59.5745	41.791
Offset:	1.59574	1.41791

Sensor	Offset (ft)	Schematic	Description	Len (ft)	OD (in)	Wt (lb)
WVF3 WVF5	9.15 8.15		CBL-P1 (030407) Probe1	8.00	2.75	100.00
CCL	4.10		CCL-T1 (Titan1) titan1	1.33	3.13	15.00
GR	1.30		GR-T1 (Titan1) Titan1	3.63	3.13	40.00
Dataset: /field/well/run1/_plots/_jobs_/cbl Total Length: 12.96 ft Total Weight: 155.00 lb O.D. 3.13 in						