



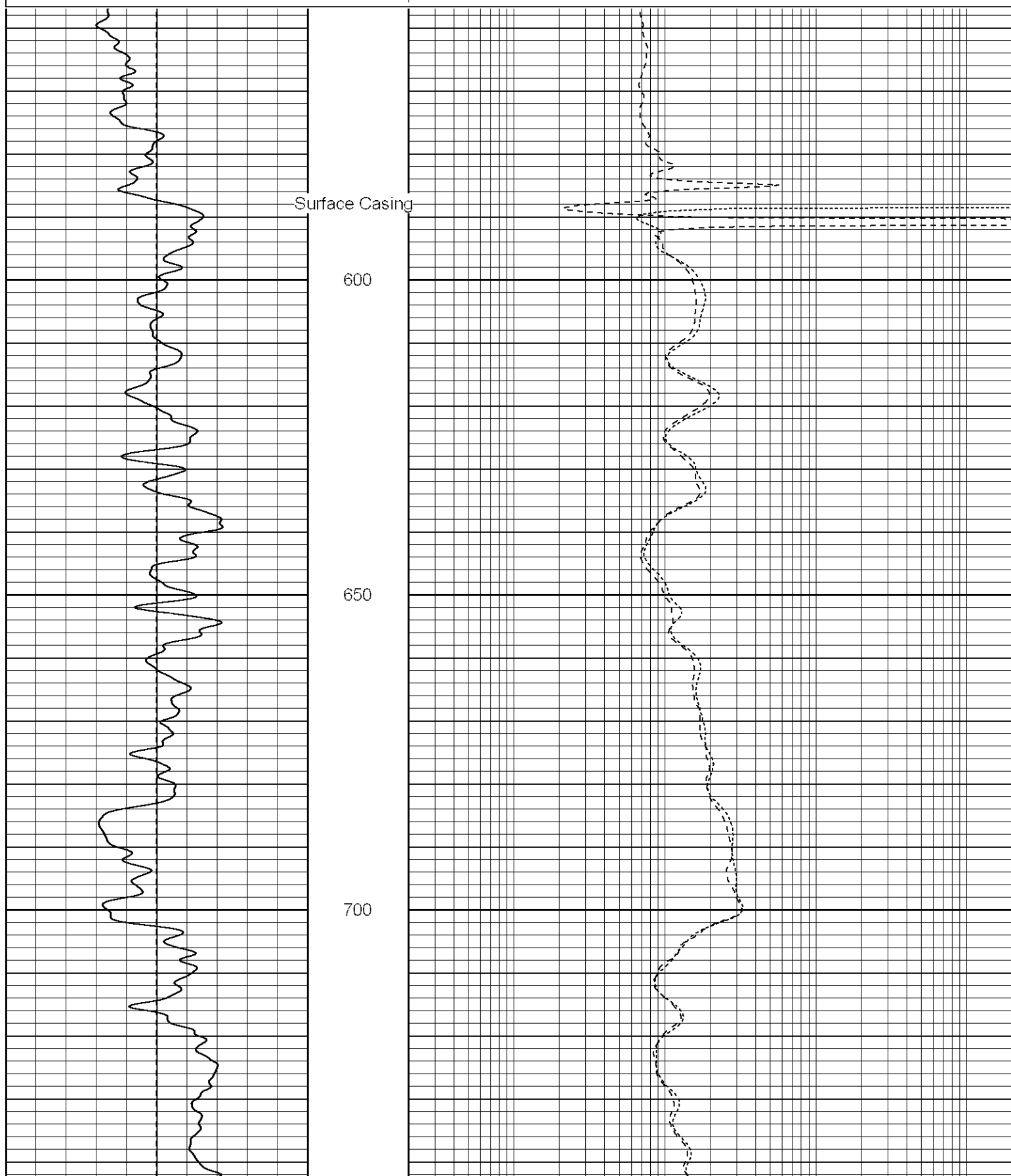
| | |
|---------|---------------------|
| Company | XTO Energy Inc. |
| Well | Apache Canyon 18-16 |
| Field | Purgatoire River |
| County | Las Animas |
| State | Colorado |

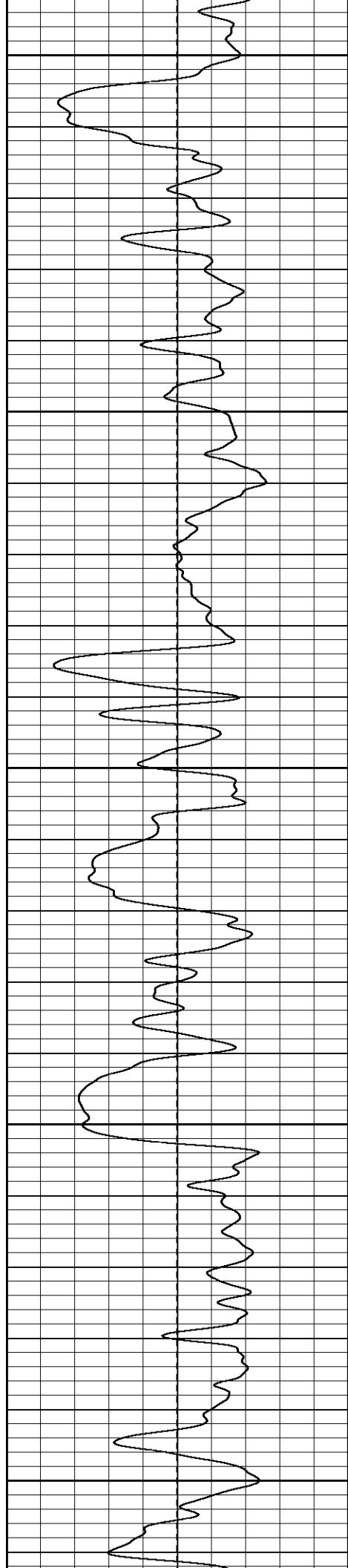
| Date |
|-----------------------|
| Run Number |
| Depth Driller |
| Depth Logger |
| Bottom Logged Inter |
| Top Log Interval |
| Casing Driller |
| Casing Logger |
| Bit Size |
| Type Fluid in Hole |
| Density / Viscosity |
| pH / Fluid Loss |
| Source of Sample |
| Rm @ Meas. Temp |
| Rmf @ Meas. Temp |
| Rmc @ Meas. Temp |
| Source of Rmf / Rm |
| Rm @ BHT |
| Time Circulation Stop |
| Time Logger on Bottom |
| Maximum Recorded |
| Equipment Number |
| Location |
| Recorded By |
| Witnessed By |

Database File: xtoac1816.db
Dataset Pathname: pass2.1
Presentation Format: dil
Dataset Creation: Fri Feb 02 15:02:47 2007 by Calc Open-Cased 060407
Charted by: Depth in Feet scaled 1:240

| | | |
|------|-----------|-----|
| 0 | GR (GAPI) | 200 |
| -100 | SP (mV) | 100 |

| | | |
|-----|--------------|------|
| 0.2 | RILM (Ohm-m) | 2000 |
| 0.2 | RILD (Ohm-m) | 2000 |
| 0.2 | RLL3 (Ohm-m) | 2000 |





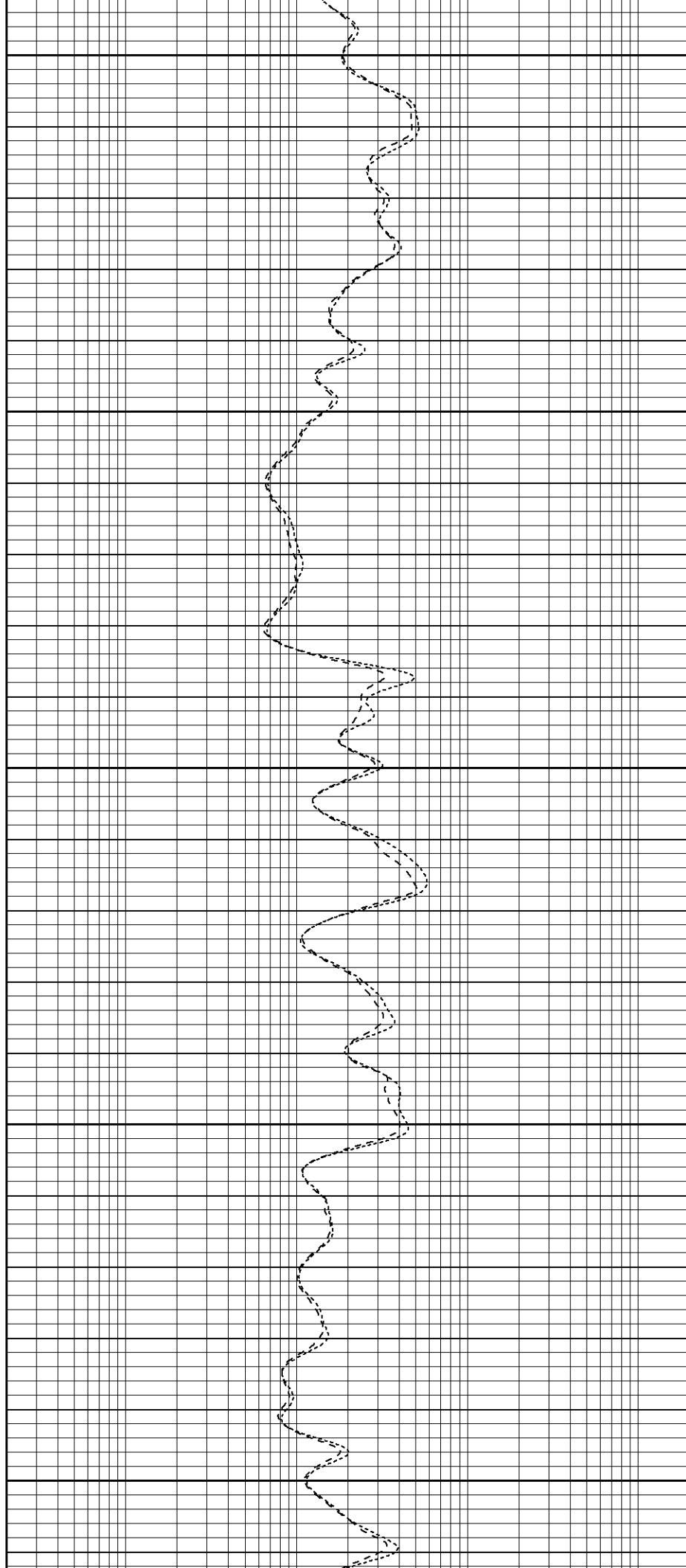
750

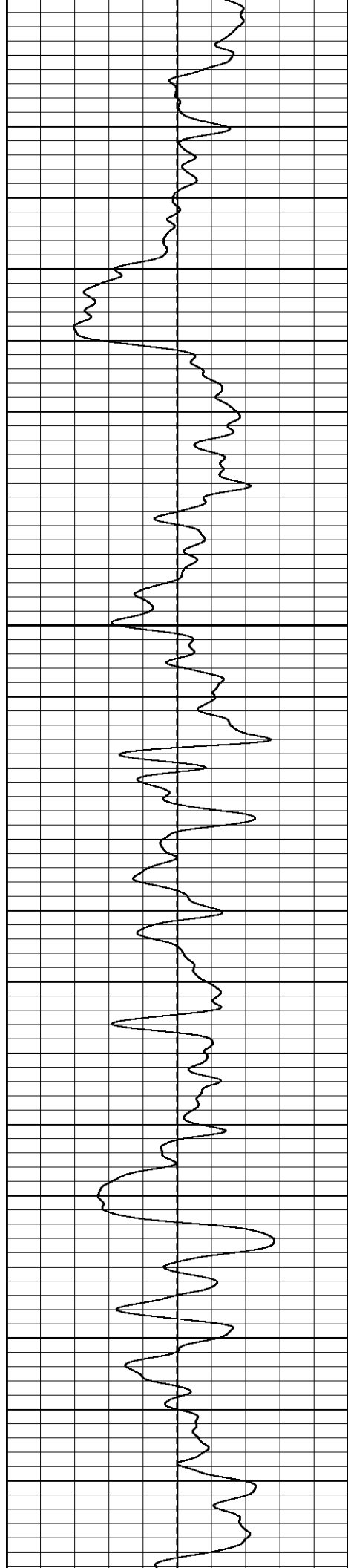
800

850

900

950



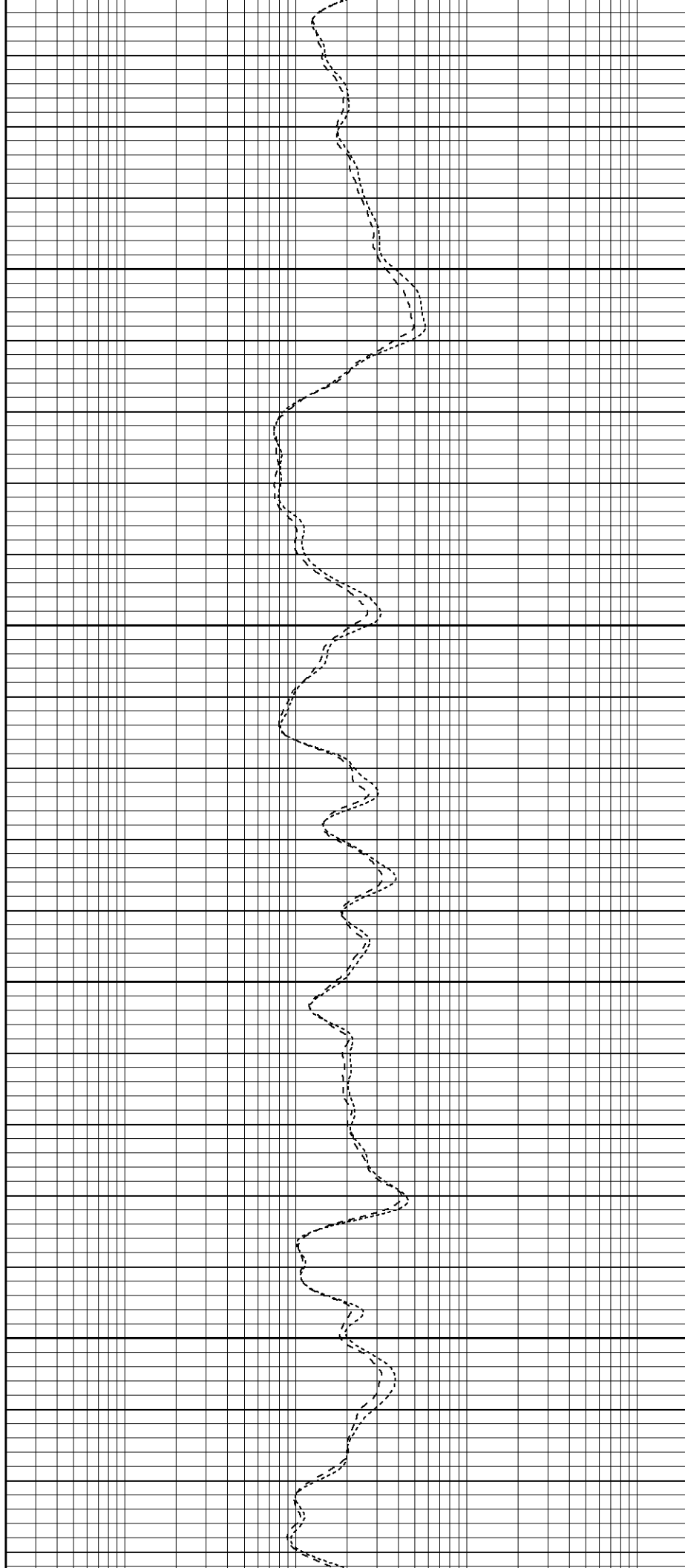


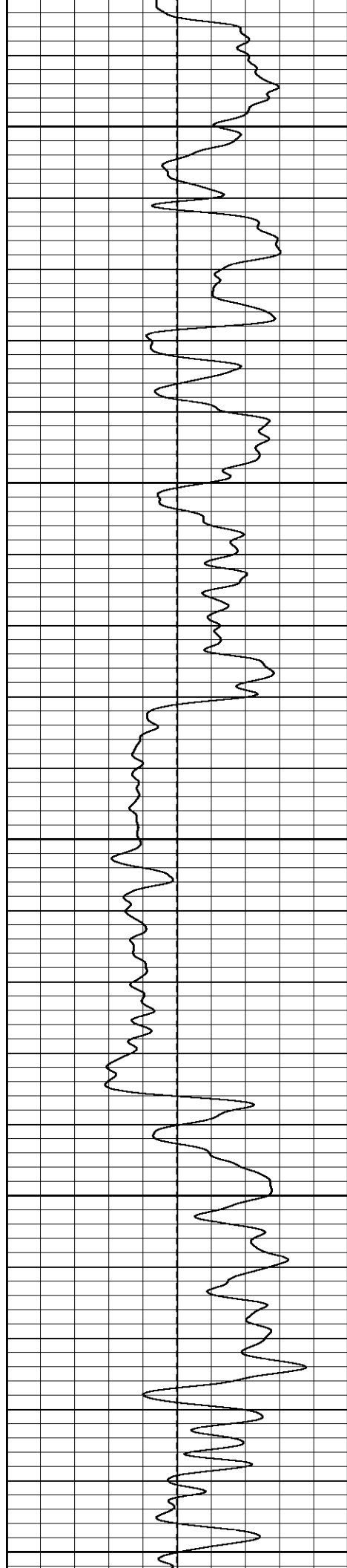
1000

1050

1100

1150





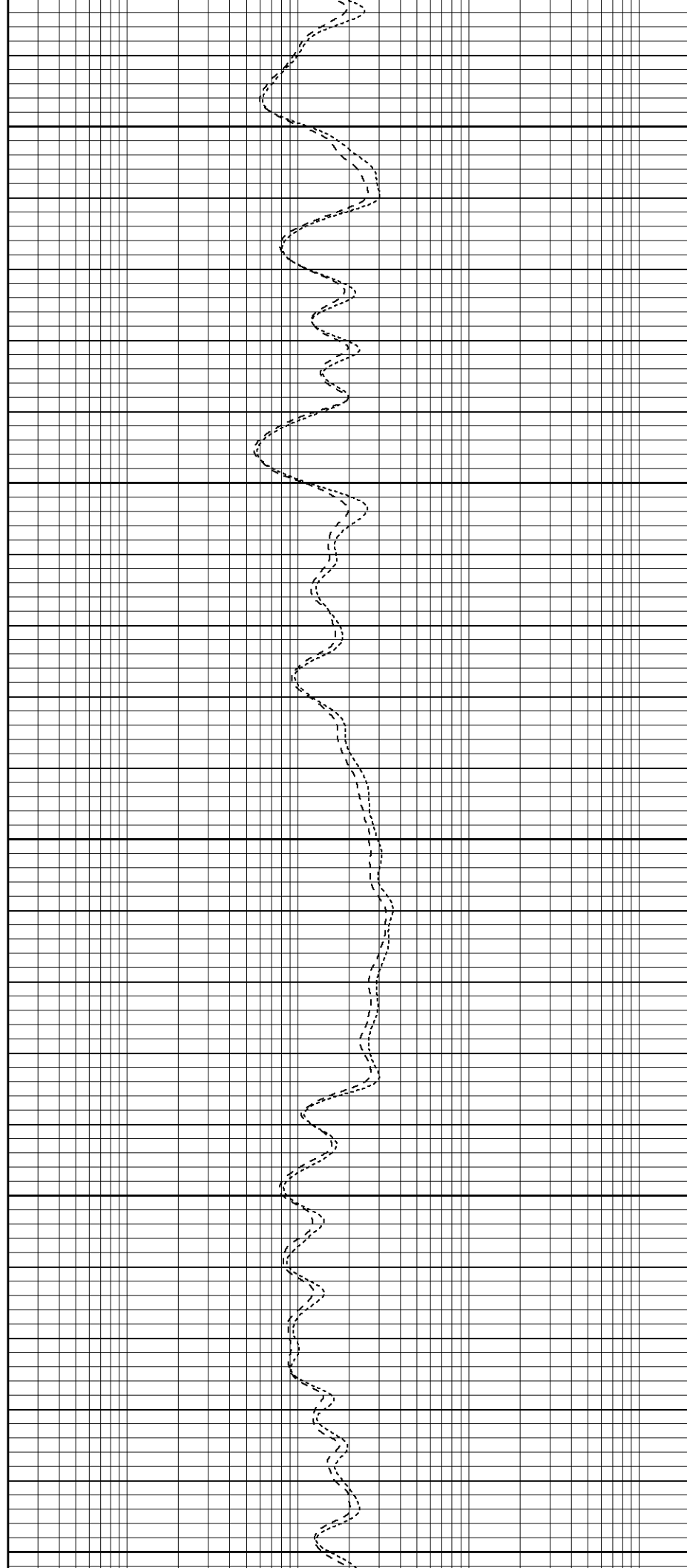
1200

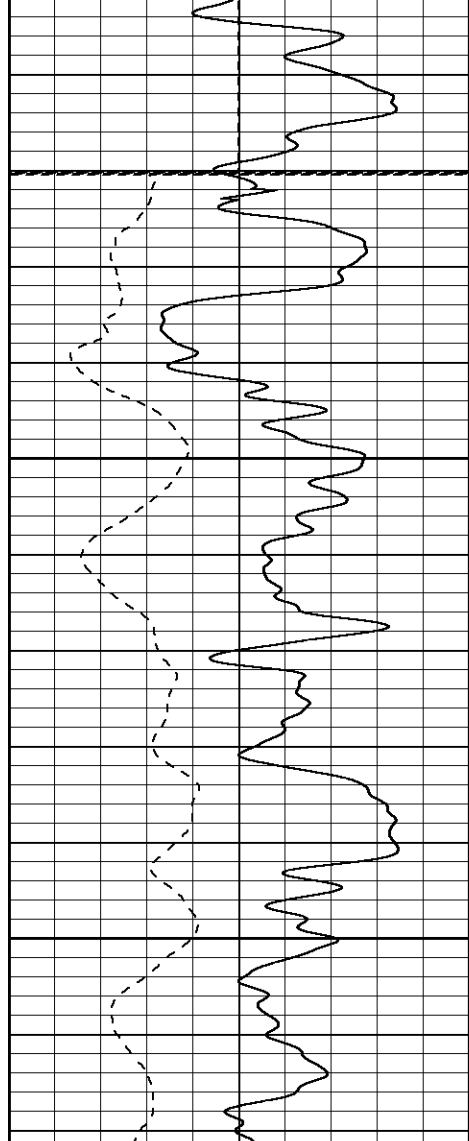
1250

1300

1350

1400

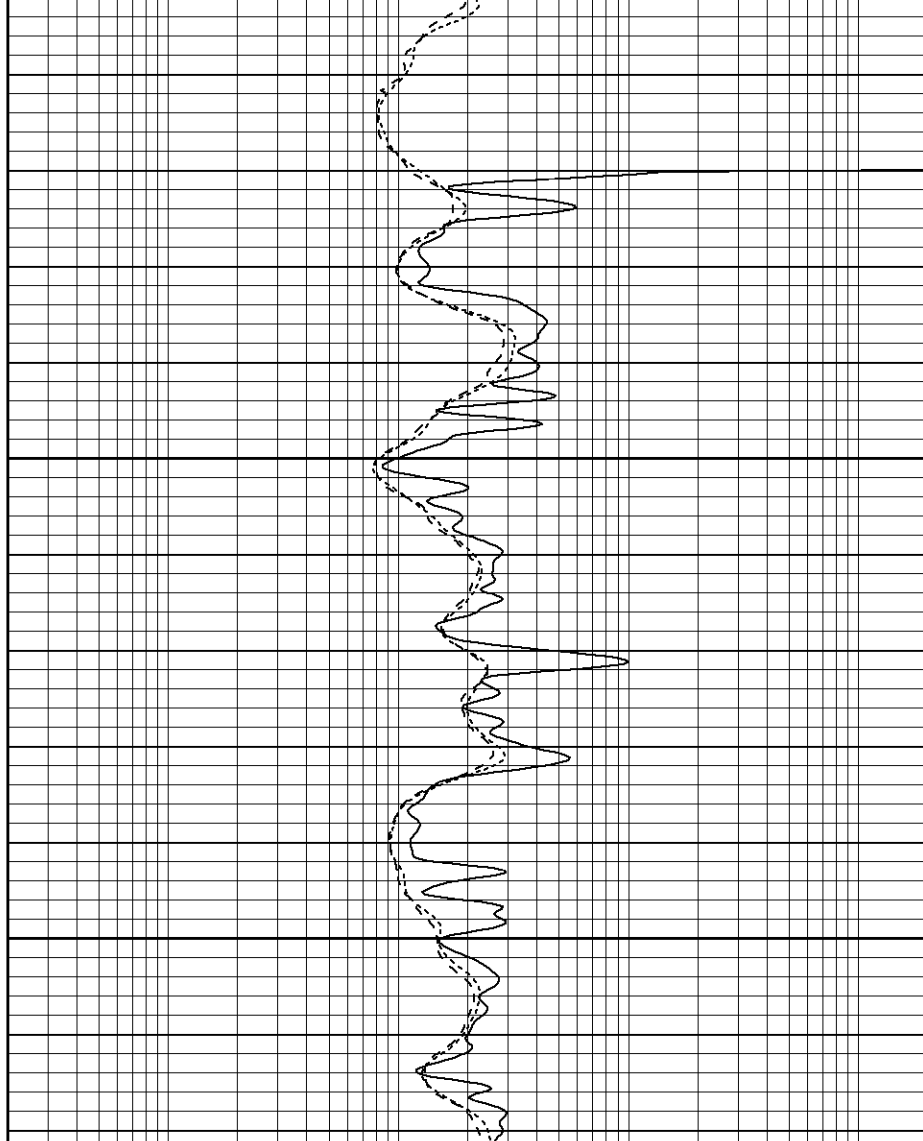


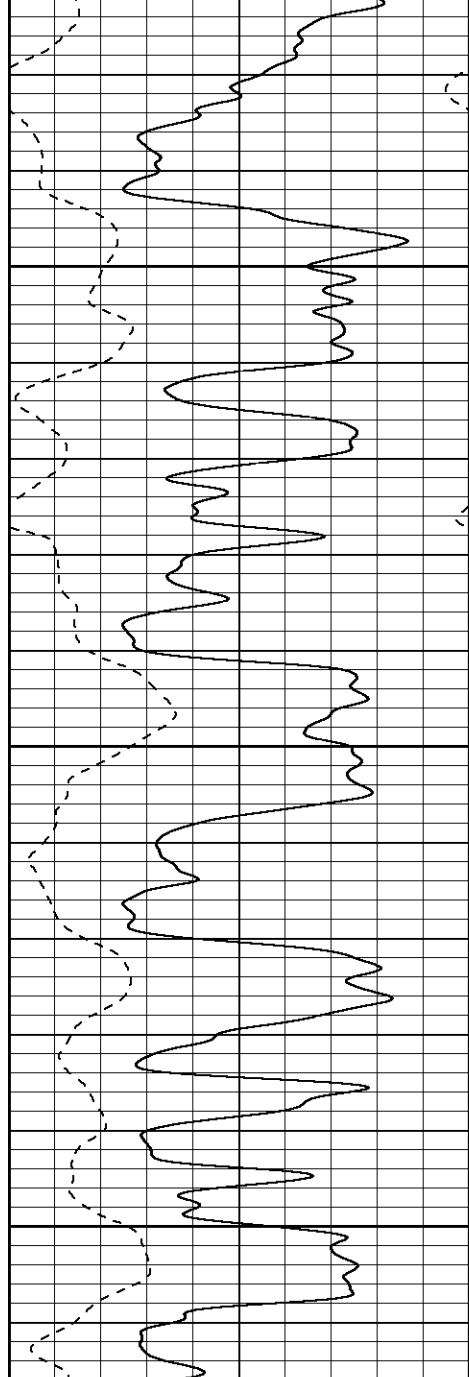


Fluid Level

1450

1500

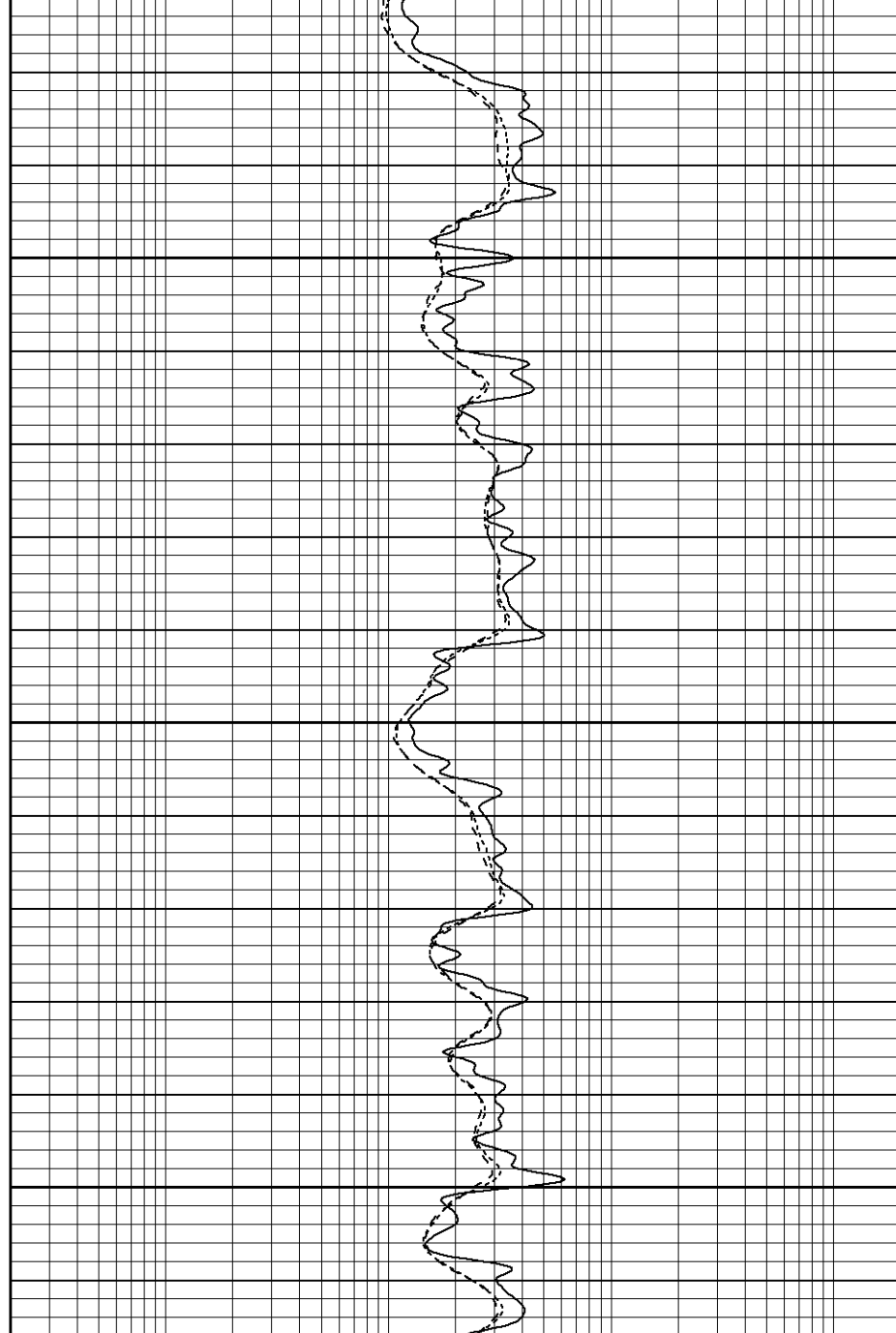


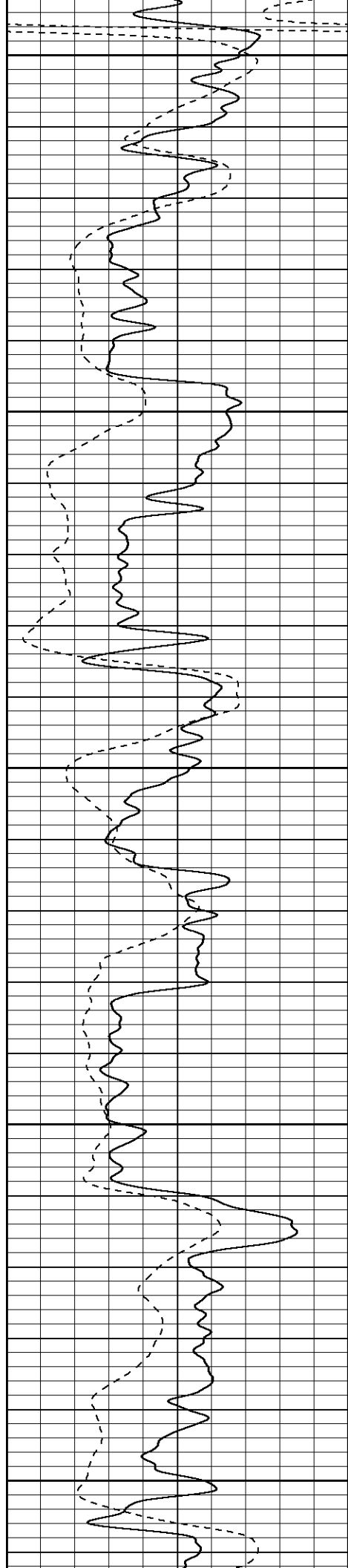


1650

1700

1750





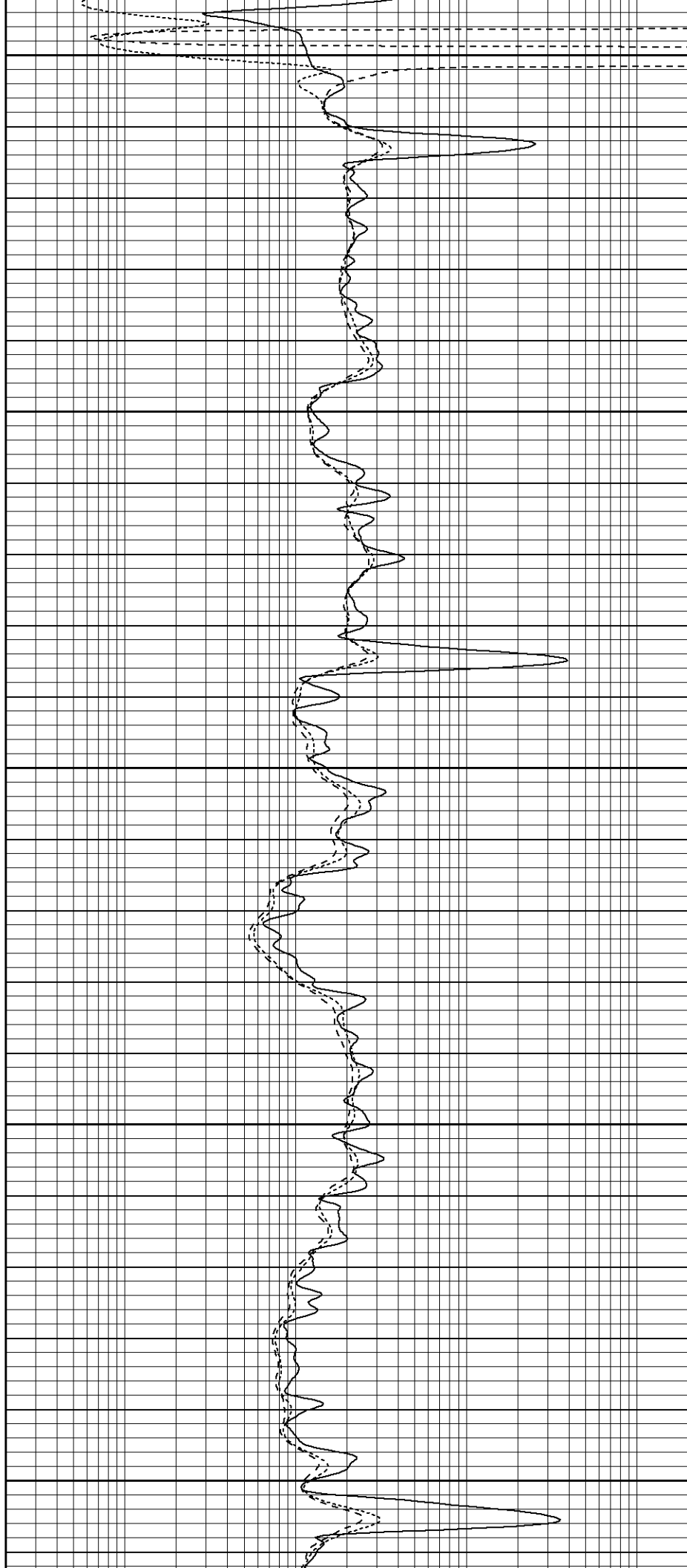
1850

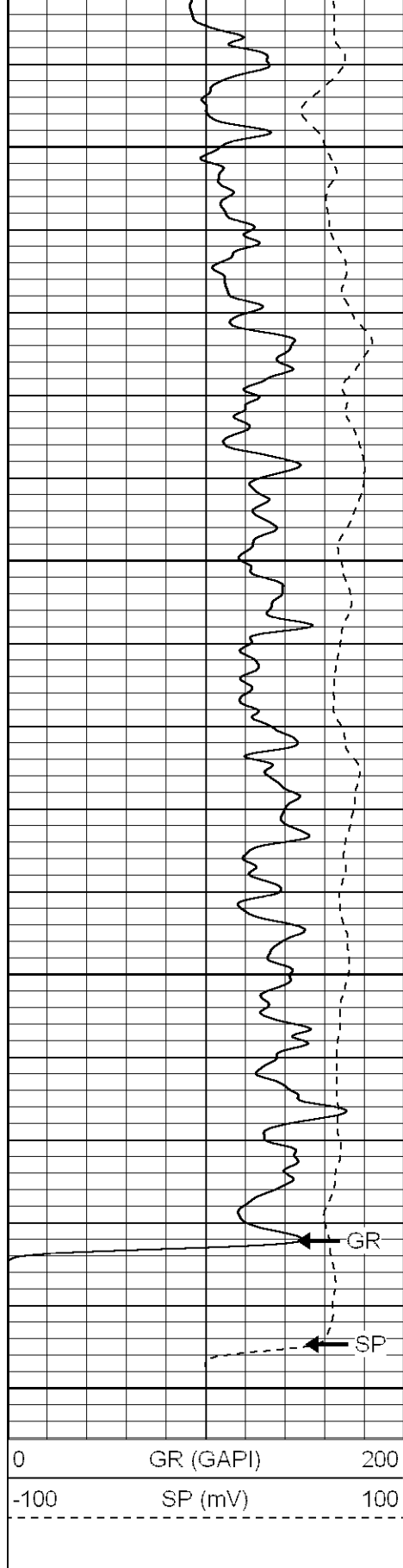
1900

1950

2000

2050



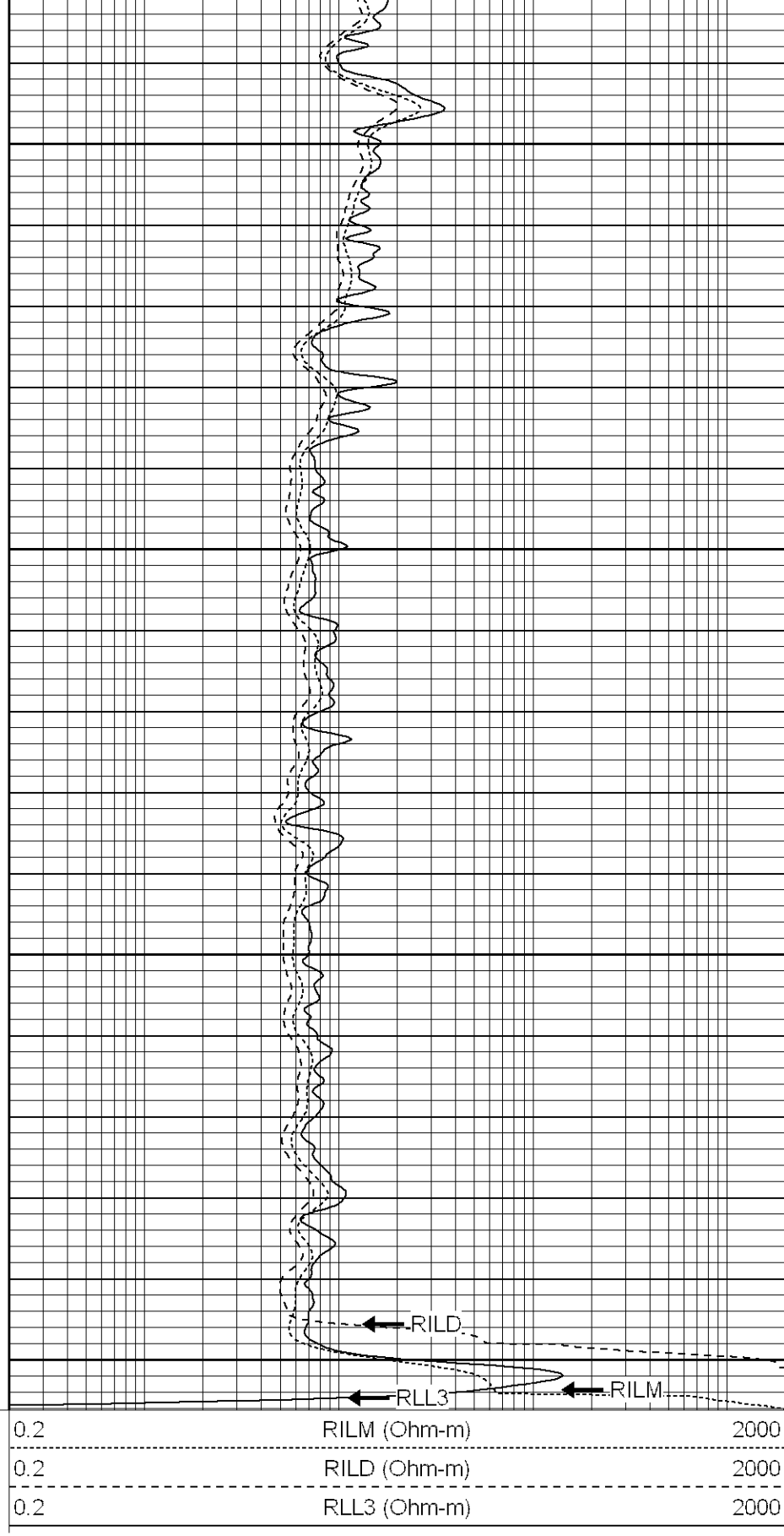


2300

2350

2400

2450



SUPERIOR

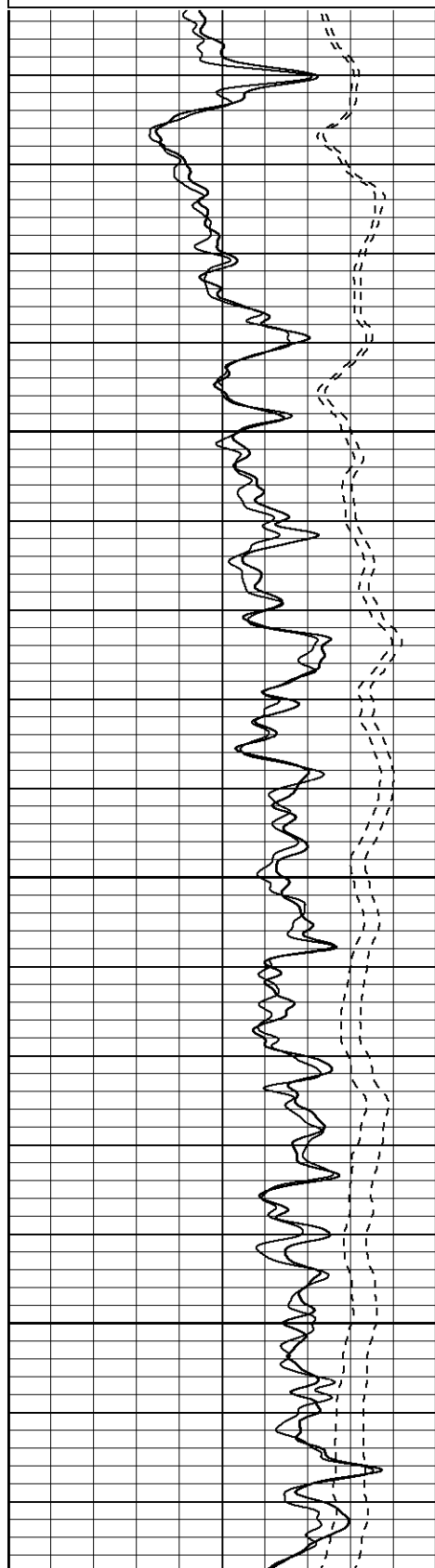
Black Lick, Pa.
Mercer, Pa.
Wooster, Oh.
Cleveland, Ok.
Trinidad, Co.

Repeat Section

Dataset Pathname: pass1.1
Presentation Format: dil
Dataset Creation: Fri Feb 02 15:02:21 2007 by Calc Open-Cased 060407
Charted by: Depth in Feet scaled 1:240

| | | |
|------|------------------|-----|
| 0 | GR (GAPI) | 200 |
| -100 | SP (mV) | 100 |
| 0 | GR-repeat (GAPI) | 200 |
| -100 | SP-repeat (mV) | 100 |

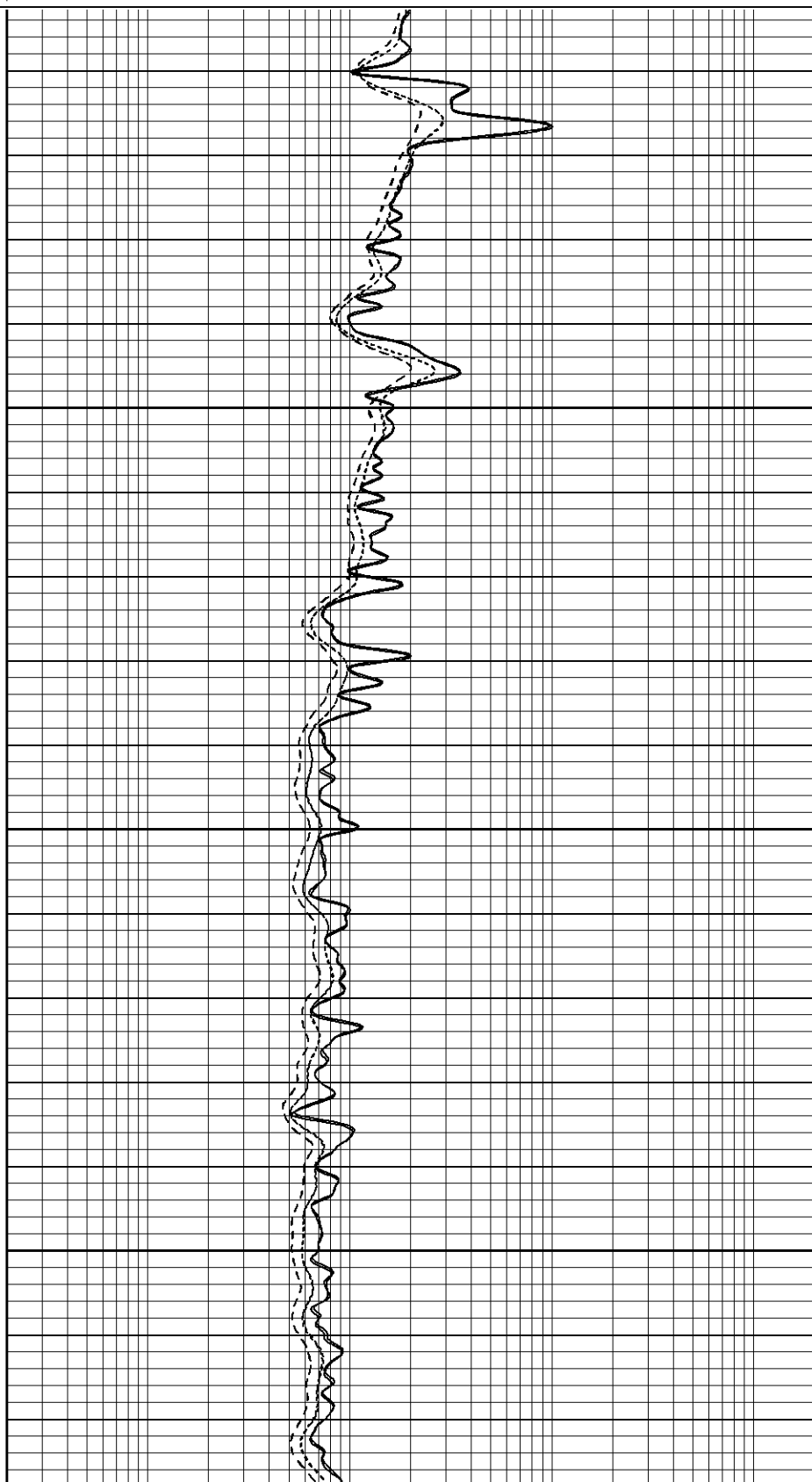
| | | |
|-----|---------------------|------|
| 0.2 | RILM (Ohm-m) | 2000 |
| 0.2 | RILD (Ohm-m) | 2000 |
| 0.2 | RLL3 (Ohm-m) | 2000 |
| 0.2 | RLL3-repeat (Ohm-m) | 2000 |
| 0.2 | RILM-repeat (Ohm-m) | 2000 |
| 0.2 | RILD-repeat (Ohm-m) | 2000 |

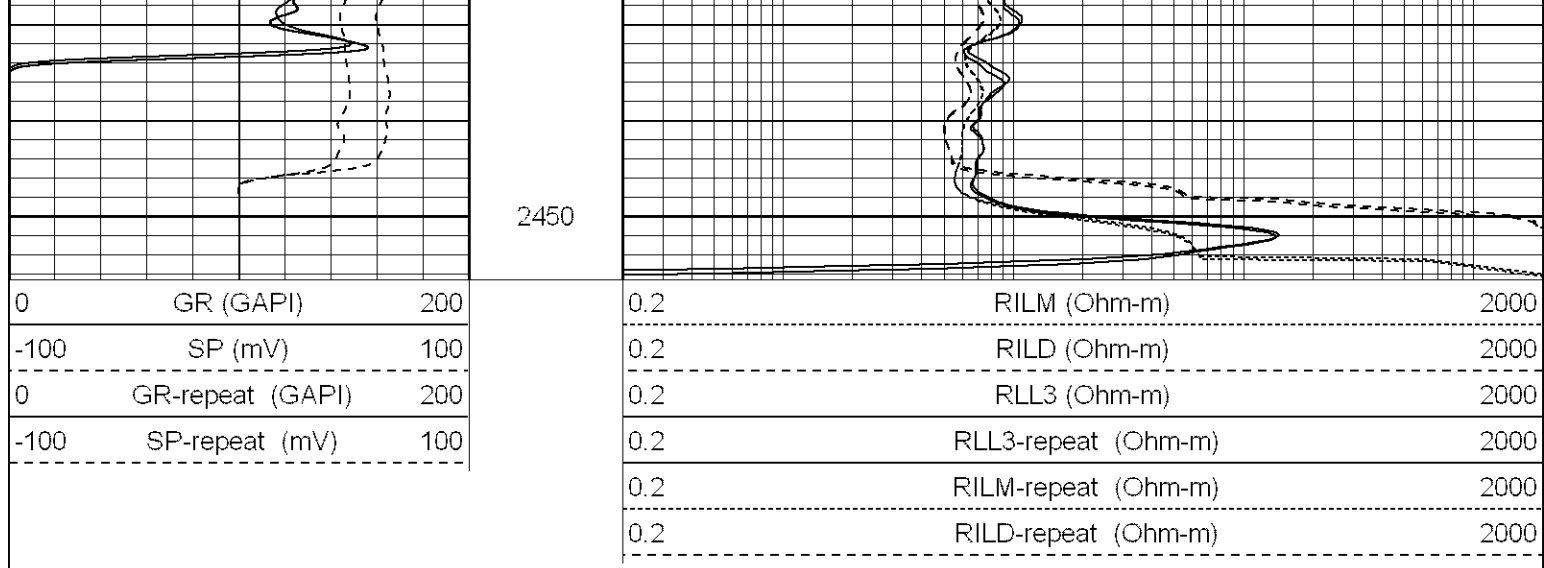


2300

2350

2400





Calibration Report

Database File: xtoac1816.db
 Dataset Pathname: pass2
 Dataset Creation: Fri Feb 02 12:49:08 2007 by Log Open-Cased 060407

Dual Induction Calibration Report

Serial-Model: 5375-G
 Surface Cal Performed: Fri Jan 19 08:02:09 2007
 Downhole Cal Performed: Sun Jan 21 14:02:19 2007

Surface Calibration

| Readings | | | | References | | | Results | |
|-----------|-------|-------|---|------------|---------|--------|---------|--------|
| Loop: | Air | Loop | | Air | Loop | | m | b |
| Deep | 0.001 | 0.620 | V | 0.000 | 500.000 | mmho-m | 807.659 | -1.119 |
| Medium | 0.005 | 0.743 | V | 0.000 | 550.000 | mmho-m | 744.727 | -3.505 |
| Internal: | Zero | Cal | | Zero | Cal | | m | b |
| Deep | 0.001 | 0.620 | V | 0.000 | 500.000 | mmho-m | 807.698 | -1.159 |
| Medium | 0.005 | 0.743 | V | 0.000 | 550.000 | mmho-m | 744.801 | -3.569 |

Downhole Calibration

| Readings | | | | References | | | Results | |
|-----------|-------|---------|--------|------------|---------|--------|---------|--------|
| Internal: | Zero | Cal | | Zero | Cal | | m | b |
| Deep | 0.123 | 499.901 | mmho-m | 0.039 | 500.015 | mmho-m | 1.000 | -0.084 |
| Medium | 0.245 | 549.982 | mmho-m | 0.064 | 550.009 | mmho-m | 1.000 | -0.182 |
| Shallow | 2.506 | 0.009 | V | 500.000 | 2.000 | Ohm-m | 145.000 | 0.000 |

Gamma Ray Calibration Report

Serial Number: 2001
 Tool Model: OH
 Performed: Fri Feb 02 12:36:35 2007

Calibrator Value: 1.0 GAPI

Background Reading: 0.0 cps
 Calibrator Reading: 1.0 cps

Sensitivity: 0.1600 GAPI/cps

| Sensor | Offset (ft) | Schematic | Description | Len (ft) | OD (in) | Wt (lb) |
|---|-------------|-----------|--------------------------|----------|---------|---------|
| CHD | 25.08 | | None | 0.75 | 1.50 | 5.00 |
| GR | 22.83 | | GR-OH (2001) SIE | 3.50 | 3.25 | 40.00 |
| CILD | 10.60 | | DIL-G (5375) Gearhart | 20.83 | 4.00 | 345.00 |
| SP | 10.60 | | | | | |
| CILM | 6.89 | | | | | |
| RLL3 | 1.70 | | | | | |
| Dataset: xtoac1816.db: field/well/run1/pass2 Total Length: 25.08 ft Total Weight: 390.00 lb O.D. 4.00 in | | | | | | |