

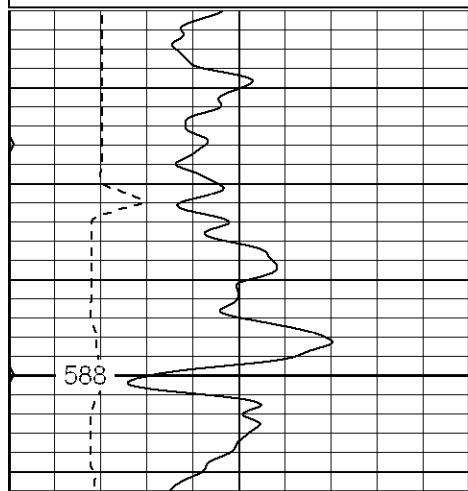
Patterson

| | | |
|------------------------------|-----------|---------------------|
| Company | | XTO Energy Inc. |
| Well | | Apache Canyon 19-06 |
| Field | | Purgatoire River |
| County | | Las Animas |
| State | | Colorado |
| Location: | | 1572' |
| | | SEC 19 T |
| Permanent Datum | | |
| Log Measured From | | |
| Drilling Measured From | | |
| Date | 08-30-1 | |
| Run Number | One | |
| Depth Driller | 2395 | |
| Depth Logger | 2361 | |
| Bottom Logged Interval | 2336 | |
| Top Log Interval | Surface C | |
| Casing Driller | 8 5/8" @ | |
| Casing Logger | 628' | |
| Bit Size | 7 7/8' | |
| Type Fluid in Hole | Water | |
| Density / Viscosity | /// | |
| pH / Fluid Loss | /// | |
| Source of Sample | /// | |
| Rm @ Meas. Temp | /// | |
| Rmf @ Meas. Temp | /// | |
| Rmc @ Meas. Temp | /// | |
| Source of Rmf / Rmc | /// | |
| Rm @ BHT | /// | |
| Time Circulation Stopped | 2:15 p. | |
| Time Logger on Bottom | 7:20 p. | |
| Maximum Recorded Temperature | 114 | |
| Equipment Number | T677 | |
| Location | Trinidad | |
| Recorded By | L. Smith | |
| Witnessed By | Mr. Dan | |

Database File: xtoac1906.db
 Dataset Pathname: pass2.1
 Presentation Format: cdl
 Dataset Creation: Wed Aug 30 20:51:04 2006 by Calc Warrior 7.0 STD Ope
 Charted by: Depth in Feet scaled 1:240

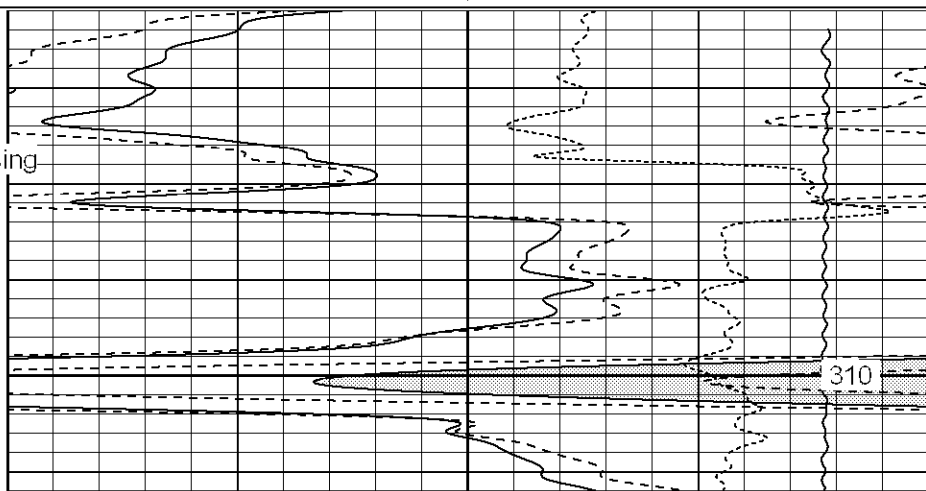
| | | |
|---|-----------|-----|
| 0 | GR (GAPI) | 200 |
| 6 | DCAL (in) | 16 |
| 0 | MINMK | 80 |

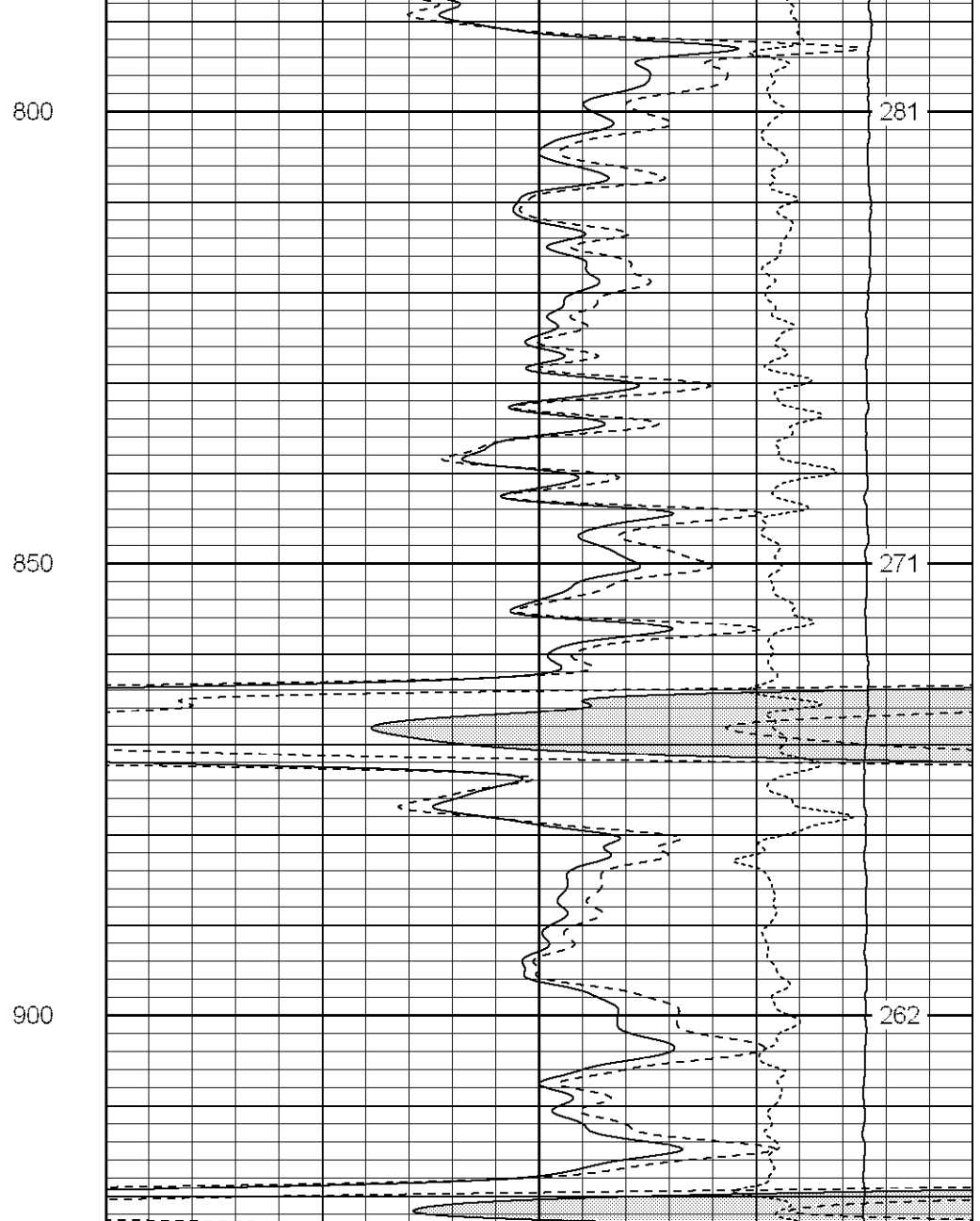
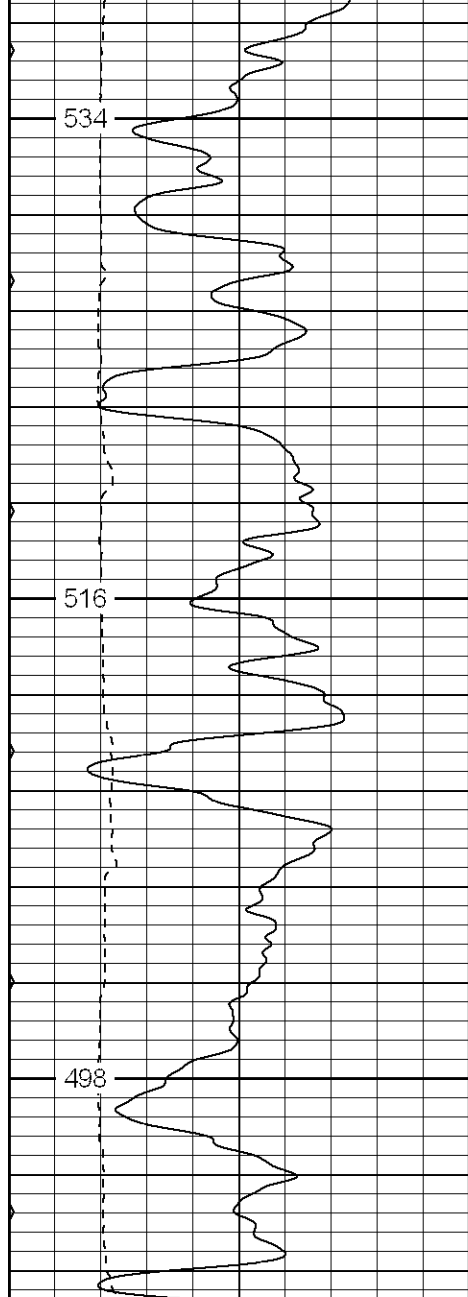
| | | |
|------|-------------|-----|
| 2 | RHOB (g/cc) | 3 |
| 1 | RHOB (g/cc) | 2 |
| 30 | DPOR (pu) | -10 |
| -0.5 | RHOC (g/cc) | 0.5 |
| 4000 | LTEN (lb) | 0 |

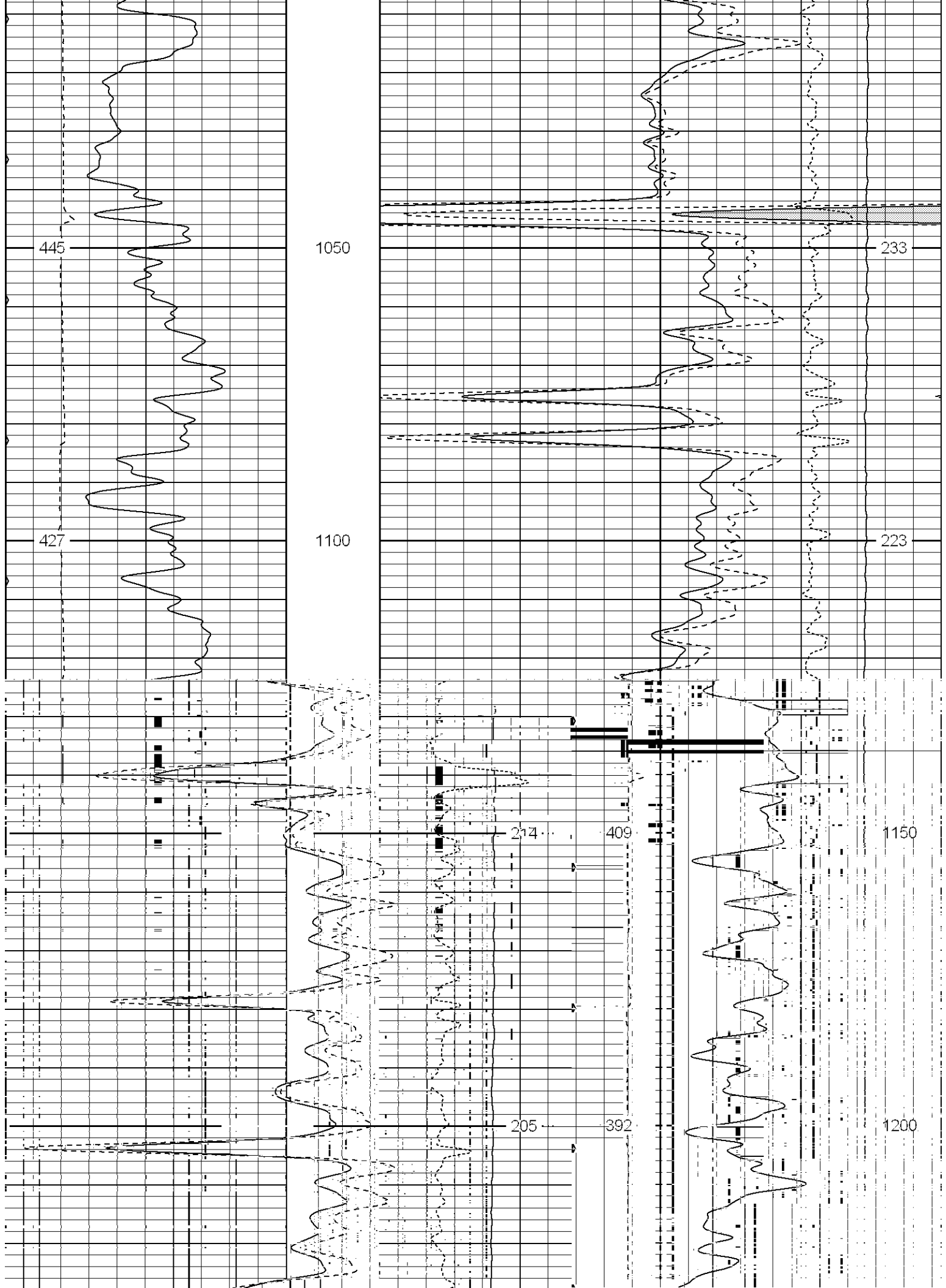


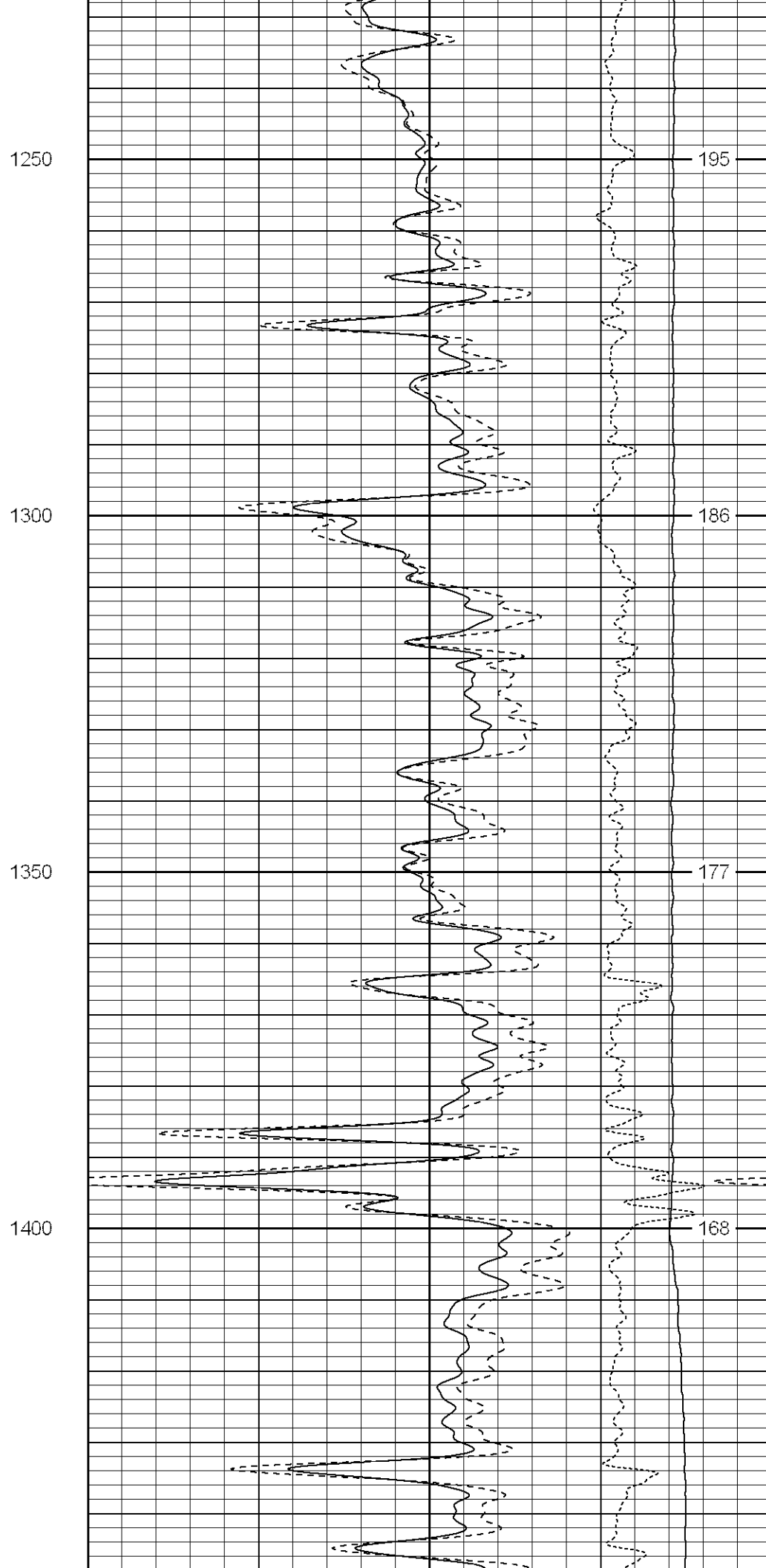
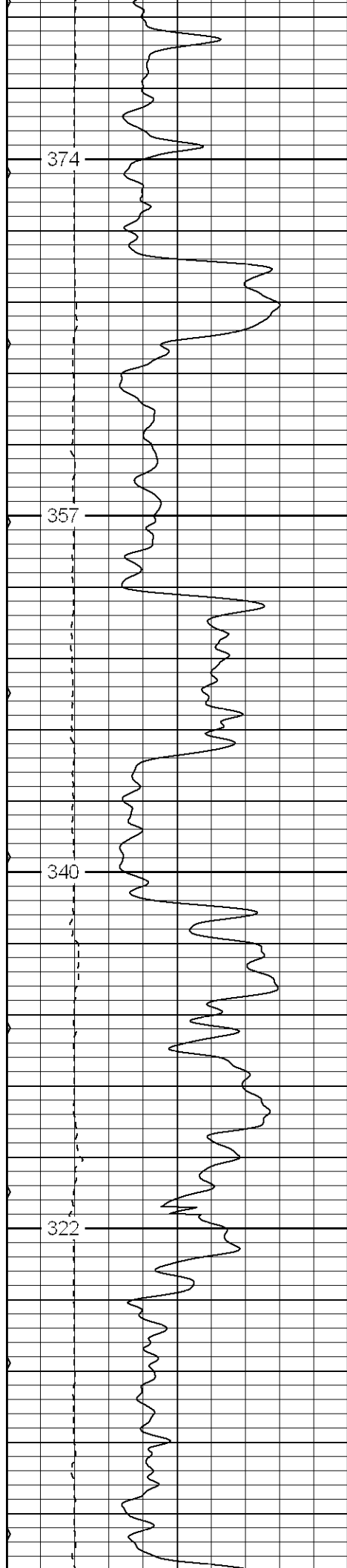
Surface Casing

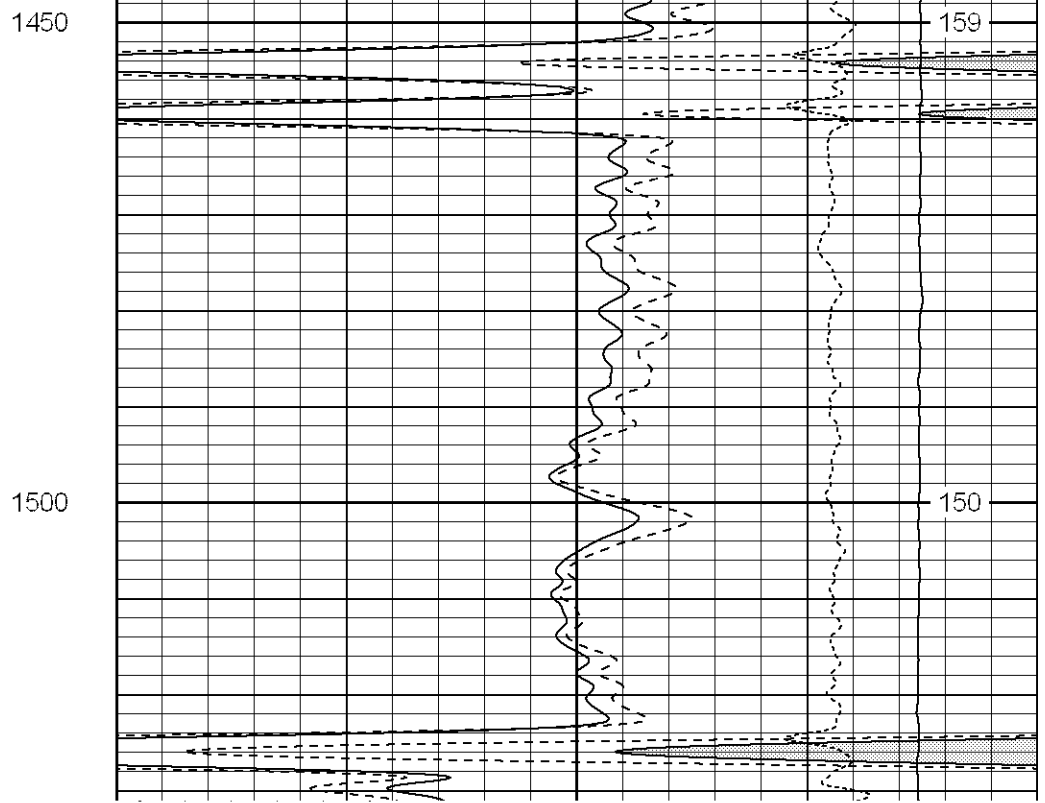
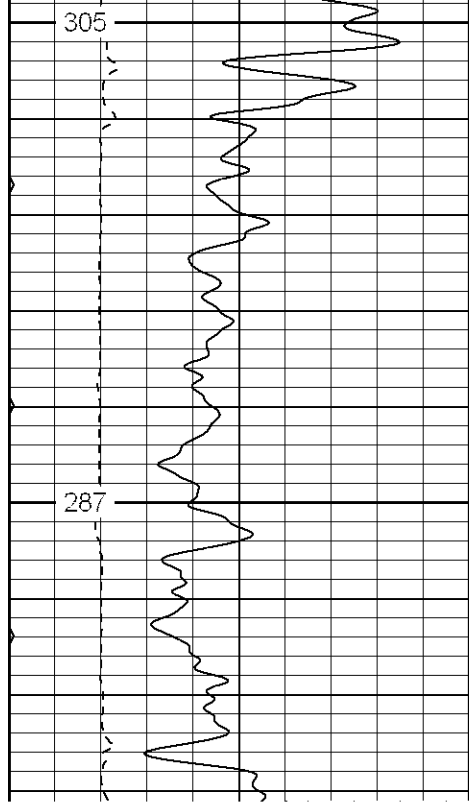
650

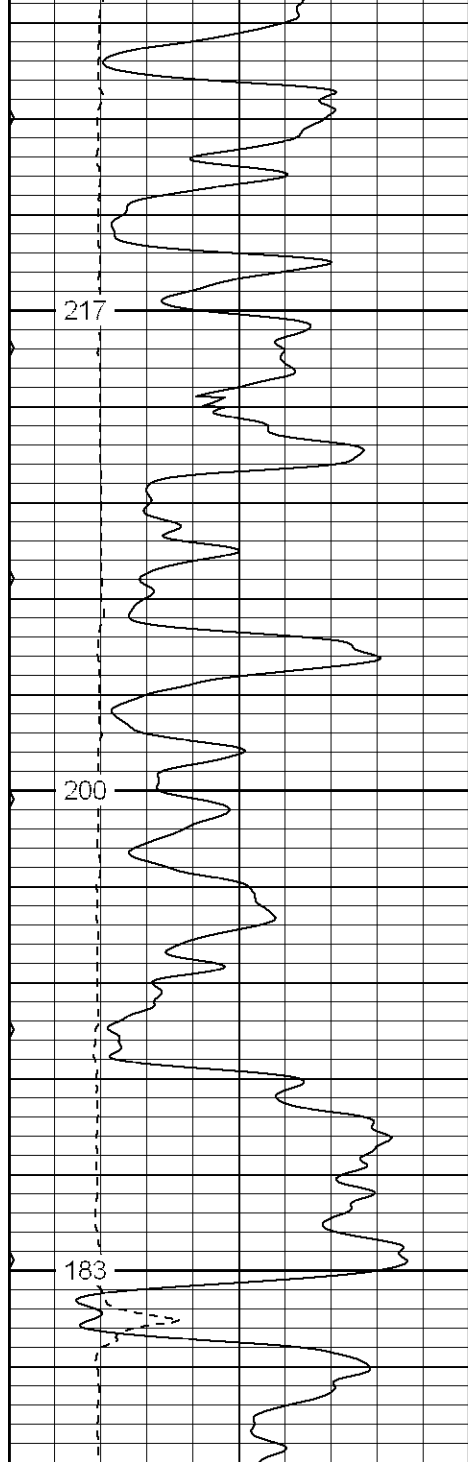








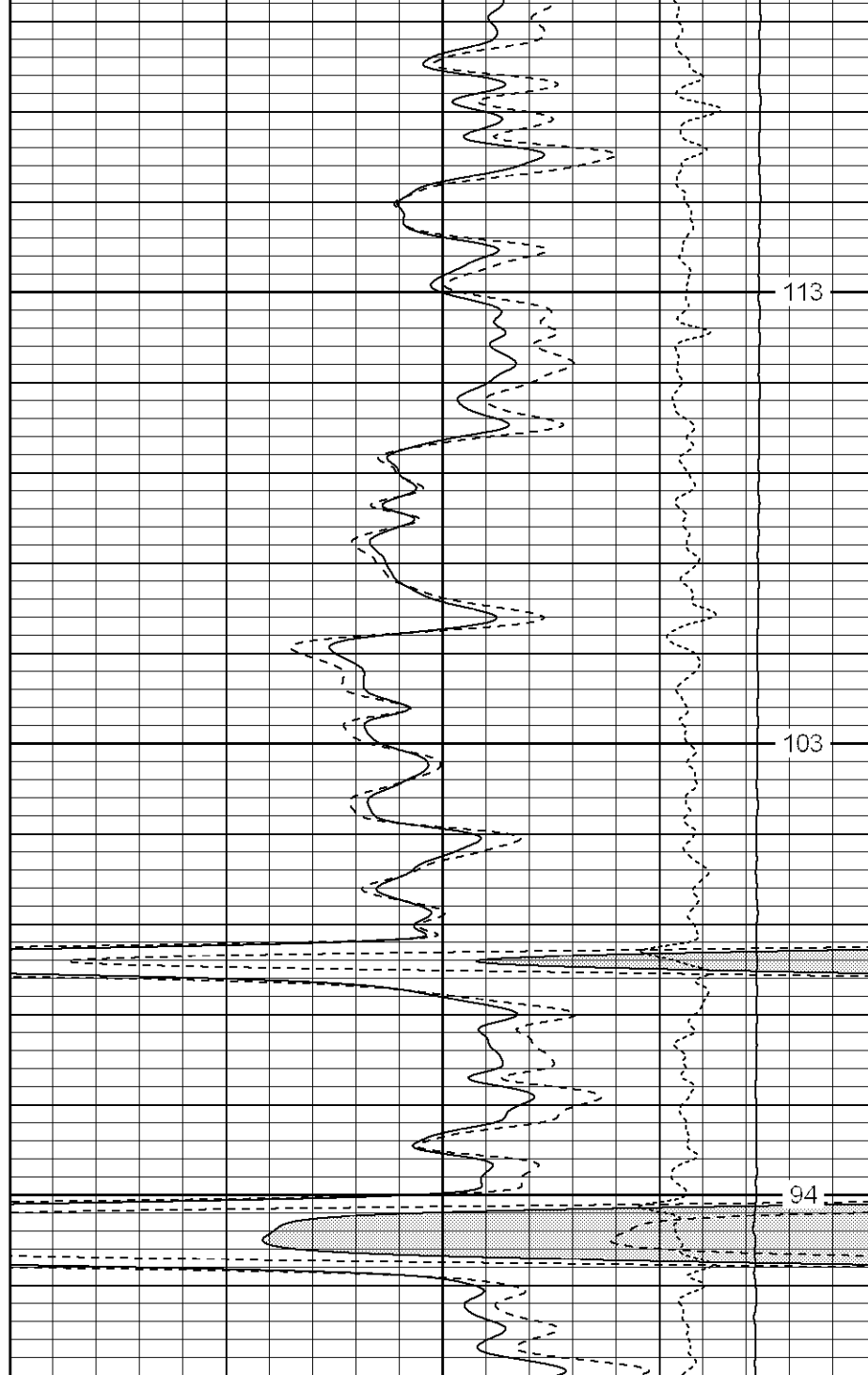




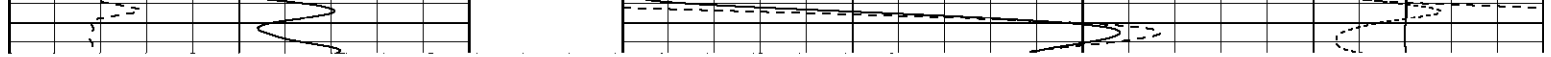
1700

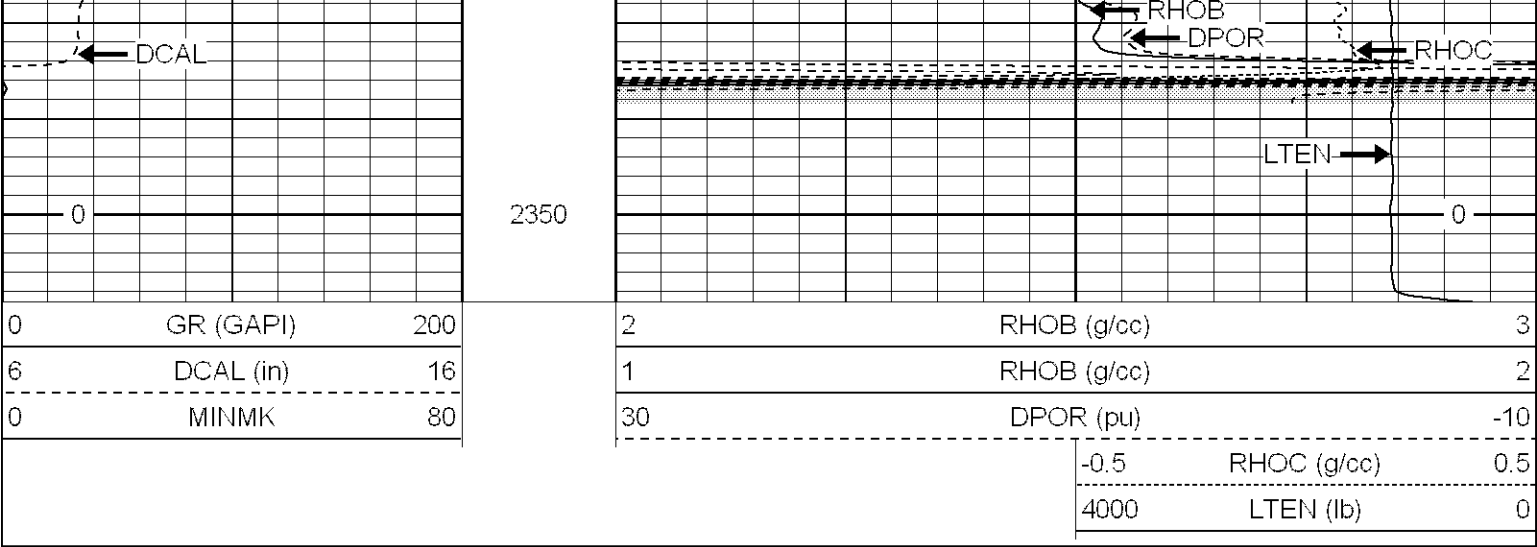
1750

1800







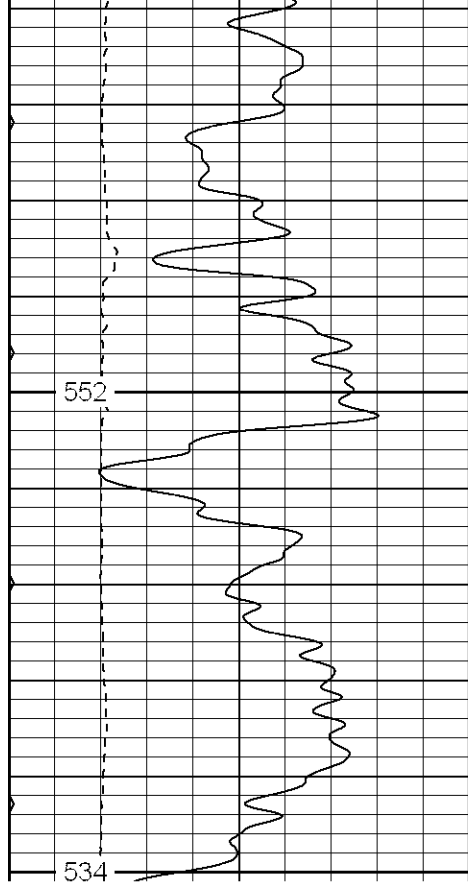


Patterson

Main Pass

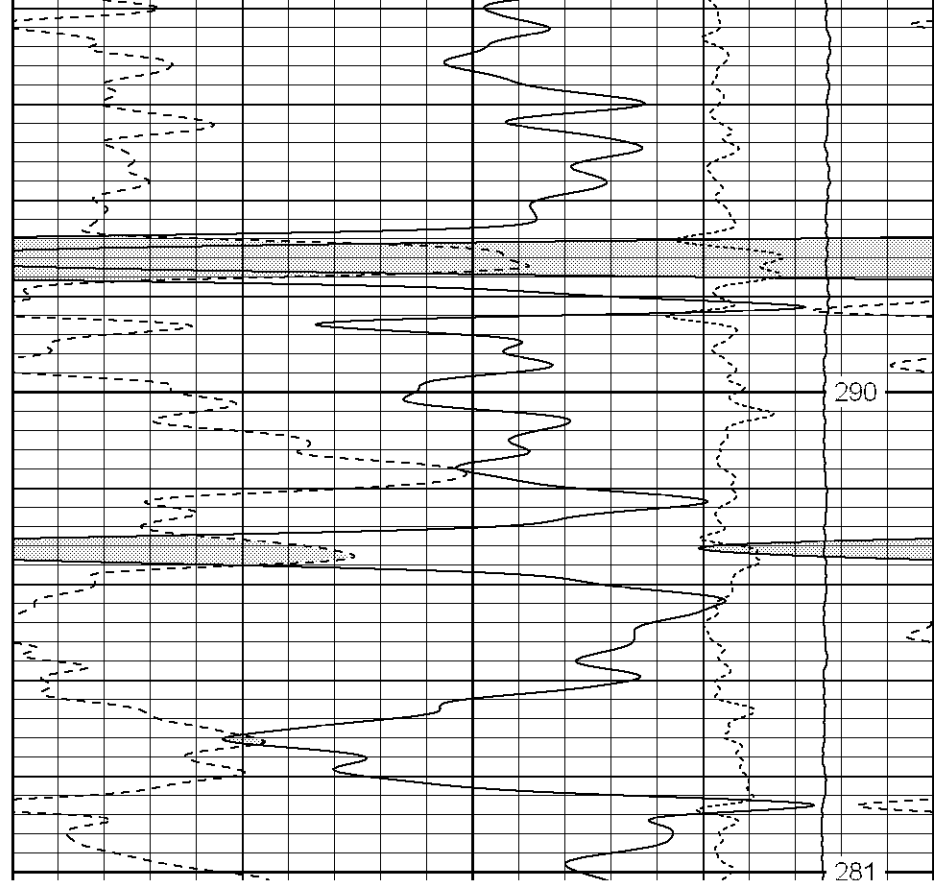
Database File: xtoac1906.db
Dataset Pathname: pass2.1
Presentation Format: cdnl
Dataset Creation: Wed Aug 30 20:51:04 2006 by Calc Warrior 7.0 STD Ope
Charted by: Depth in Feet scaled 1:240

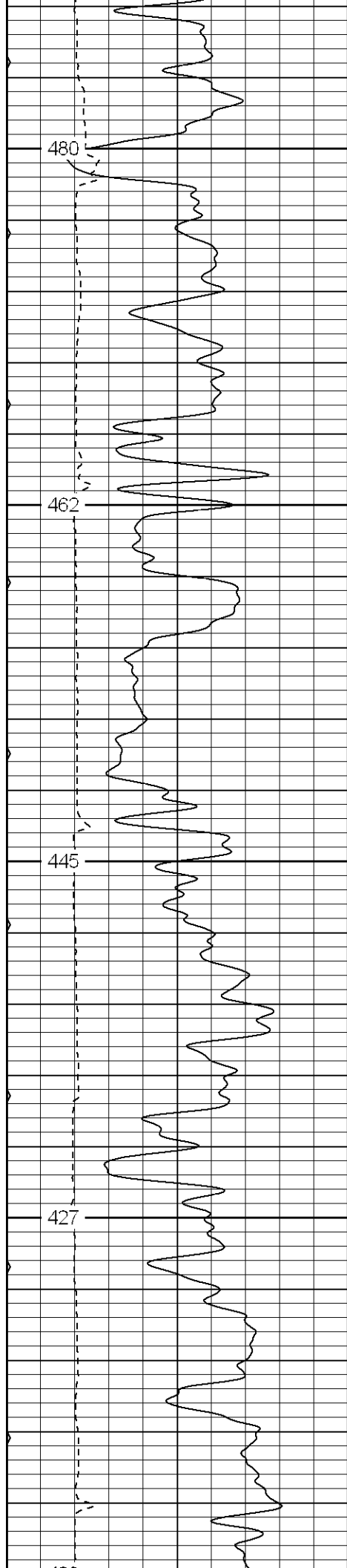
| | | | | | |
|---|-----------|-----|------|-------------|-----|
| 0 | GR (GAPI) | 200 | 30 | NPOR (pu) | -10 |
| 6 | DCAL (in) | 16 | 30 | DPOR (pu) | -10 |
| 0 | MINMK | 80 | -0.5 | RHOC (g/cc) | 0.5 |
| | | | 4000 | LTEN (lb) | 0 |



750

800



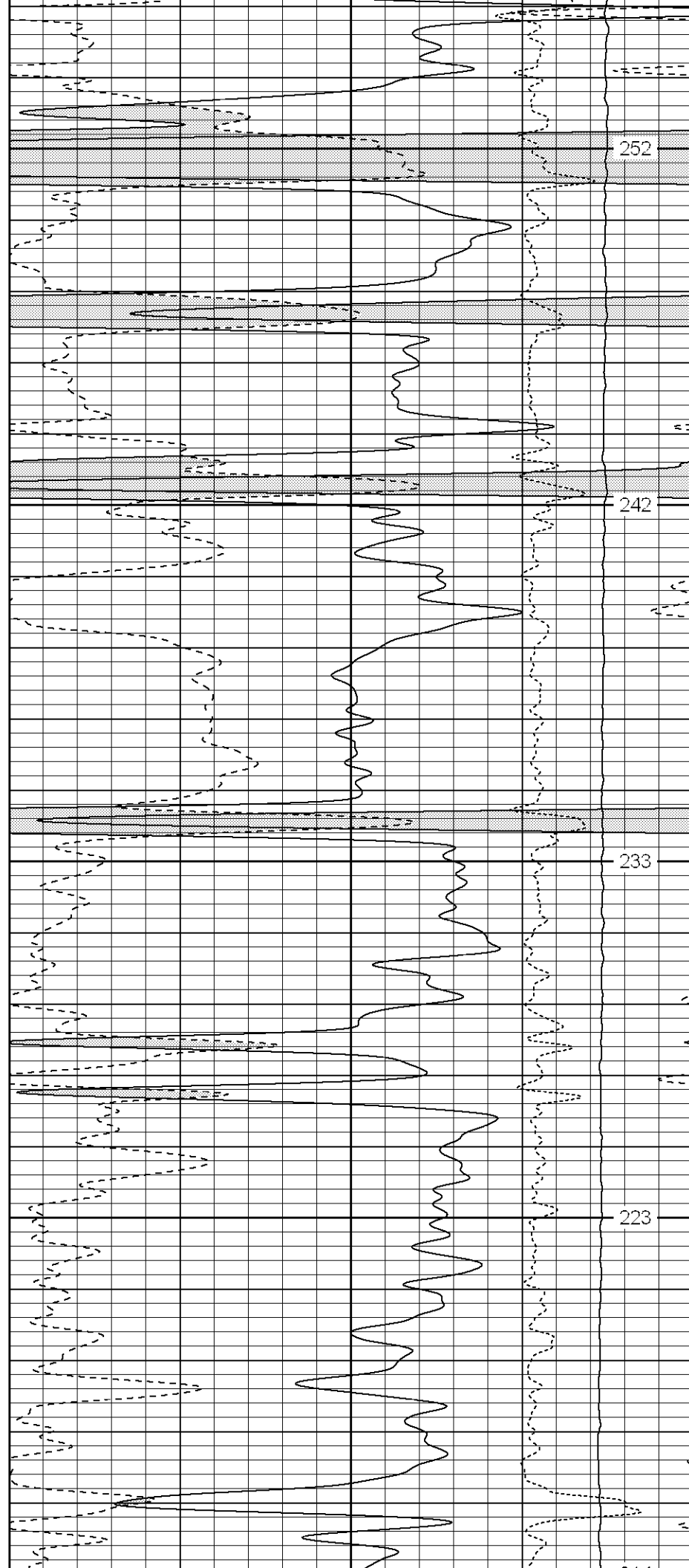


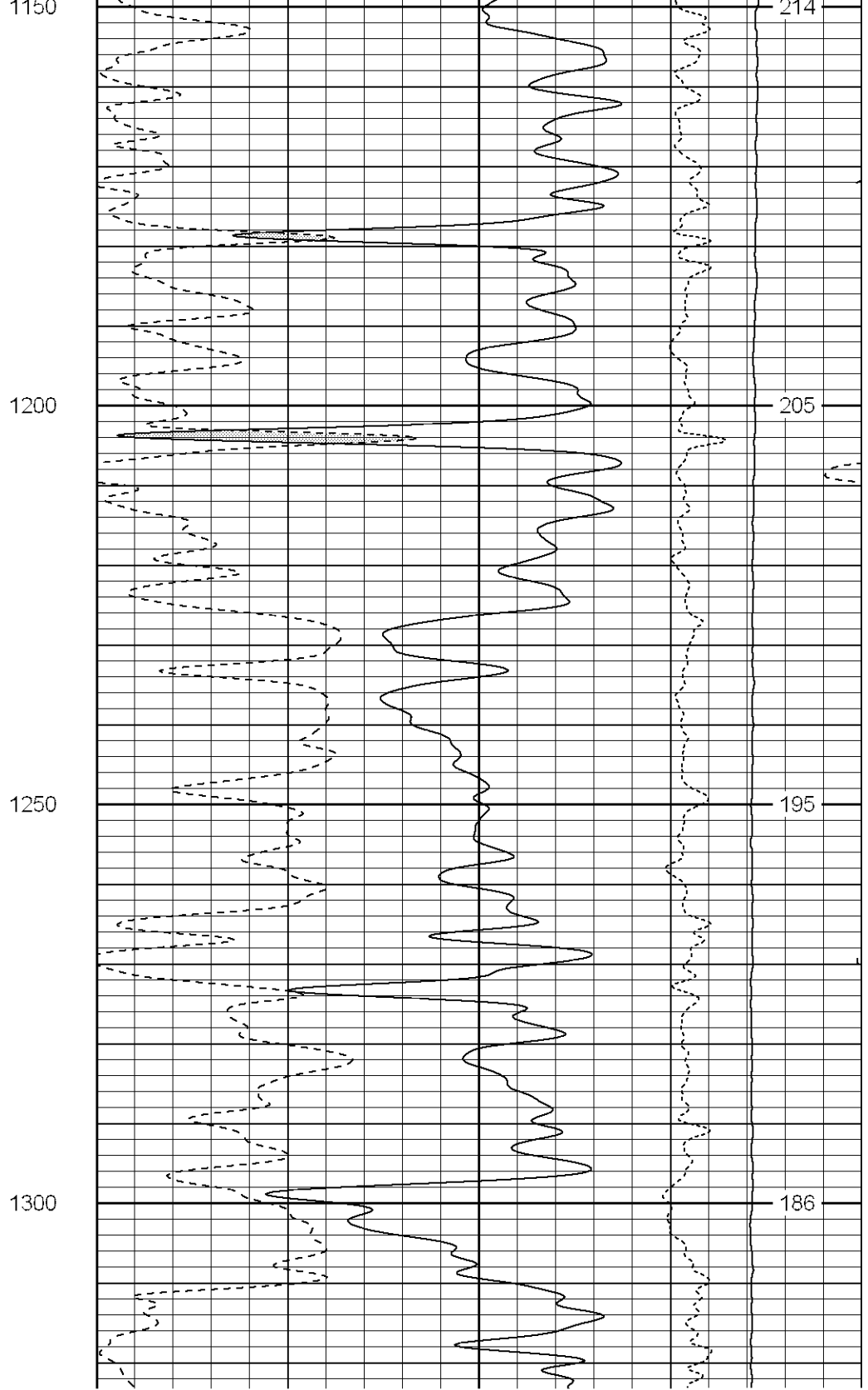
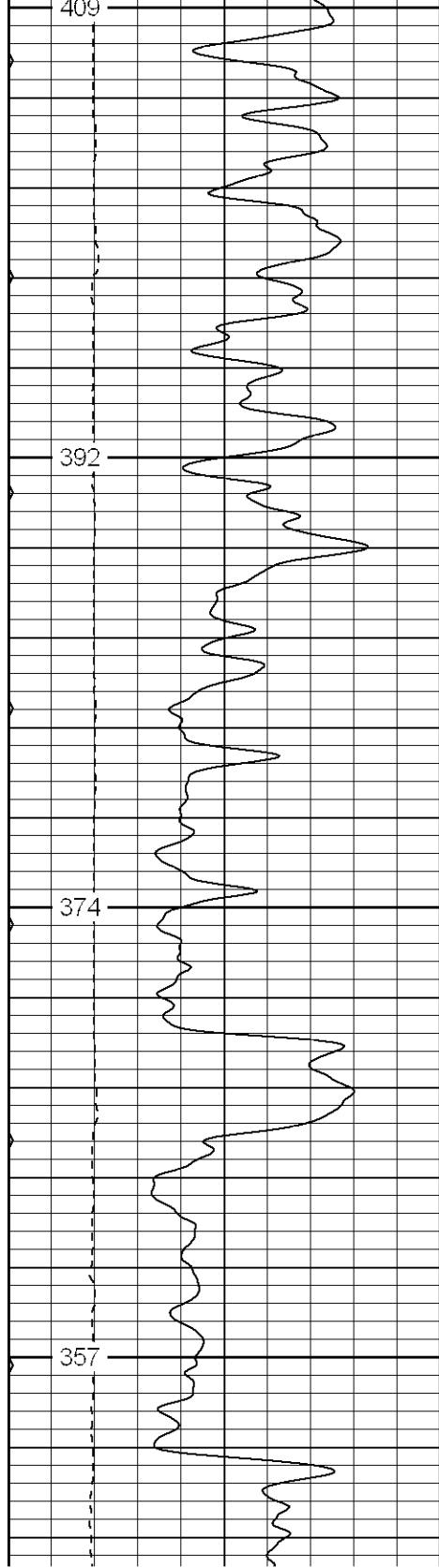
950

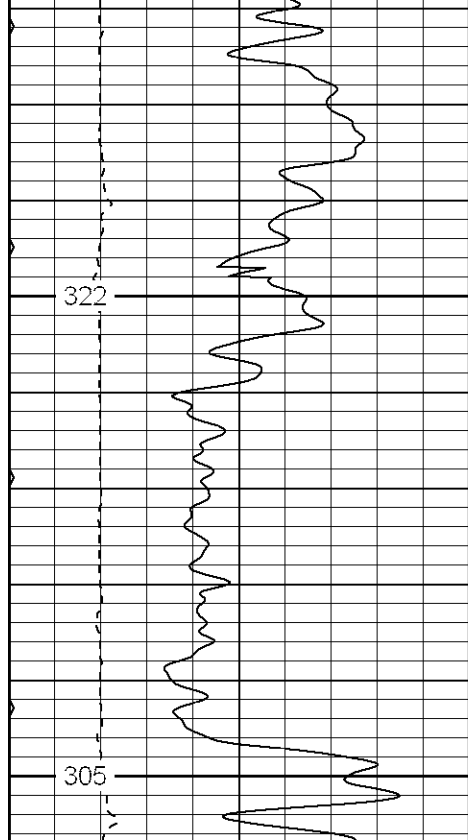
1000

1050

1100

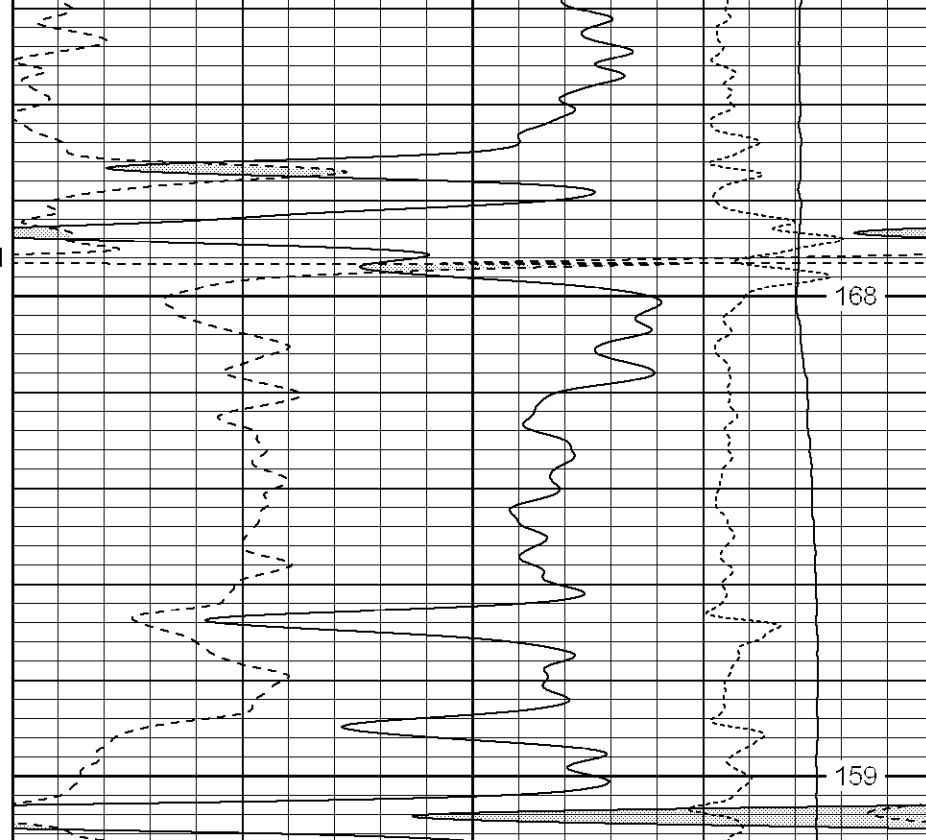


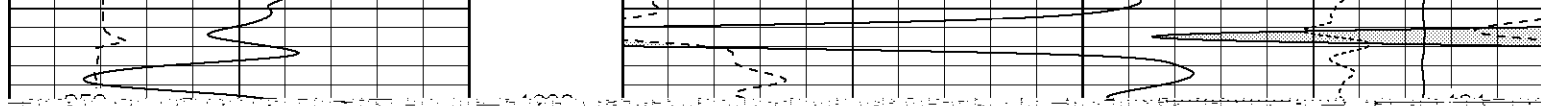


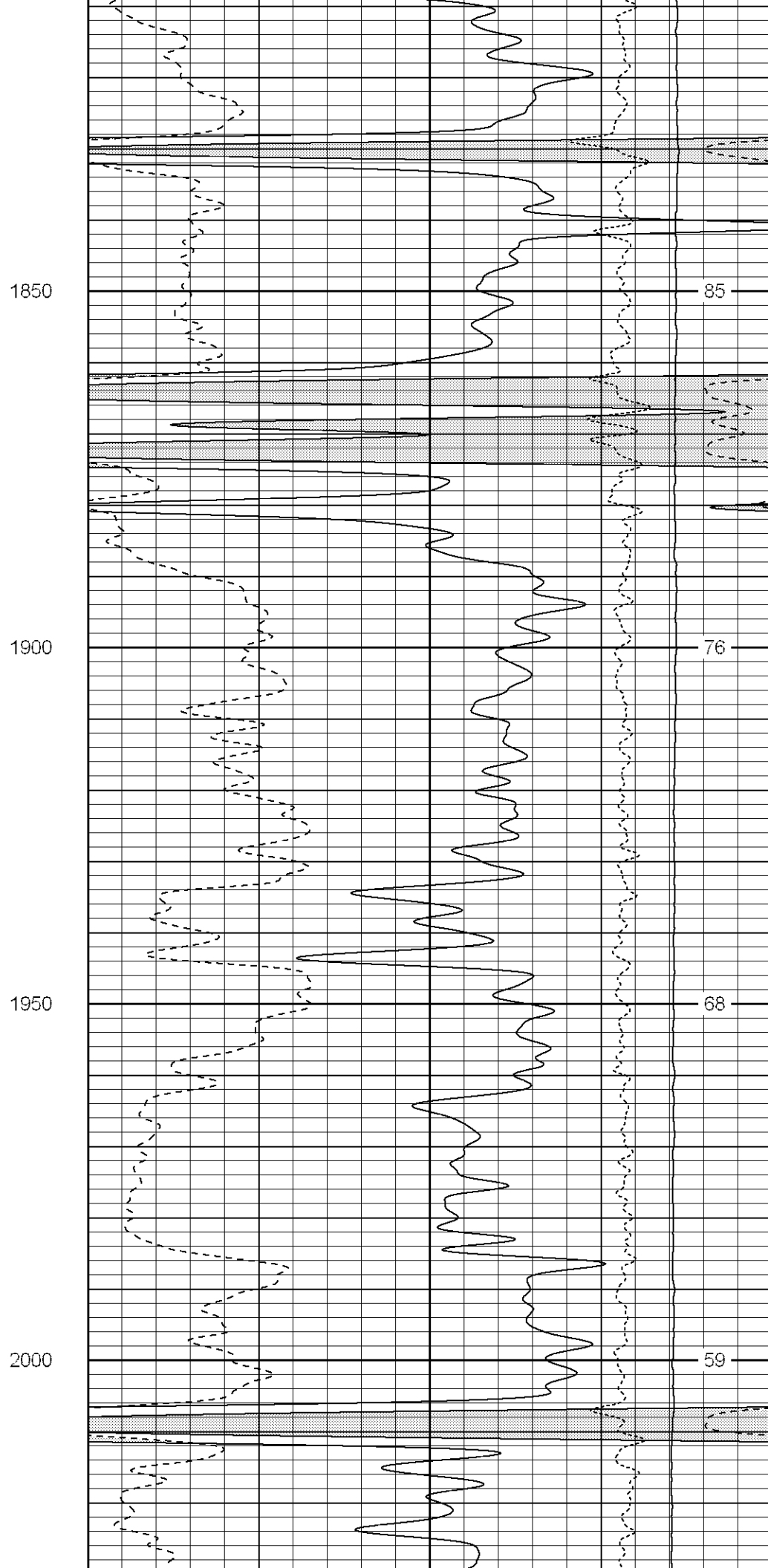
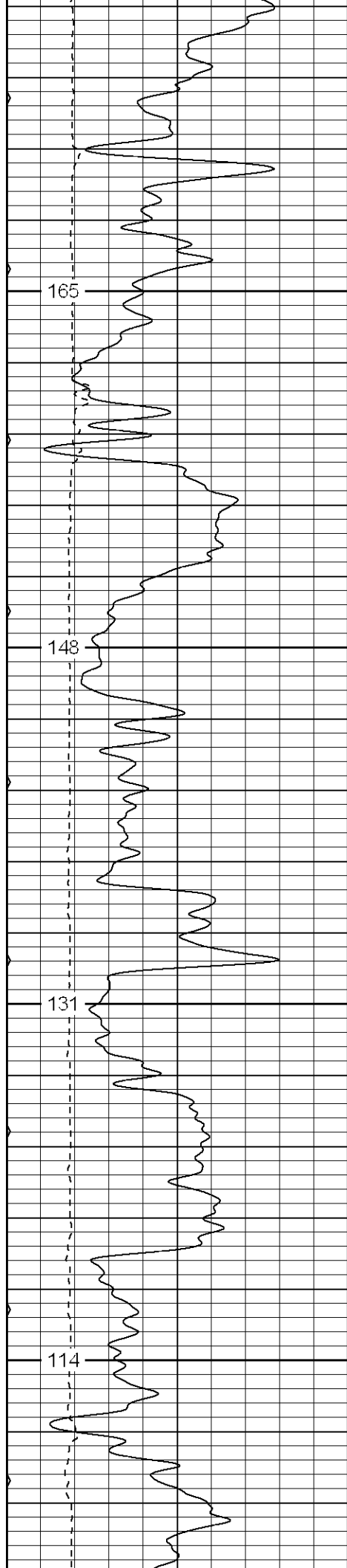


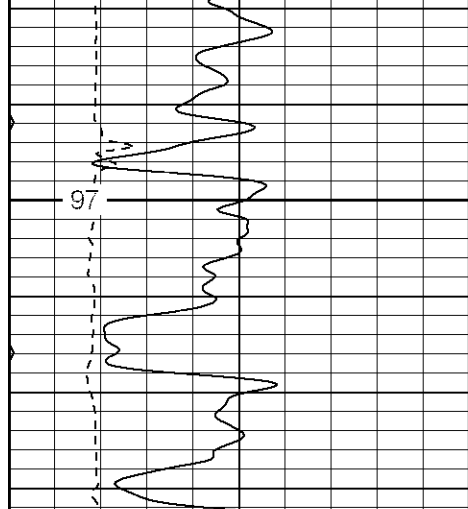
Fluid Level
1400

1450

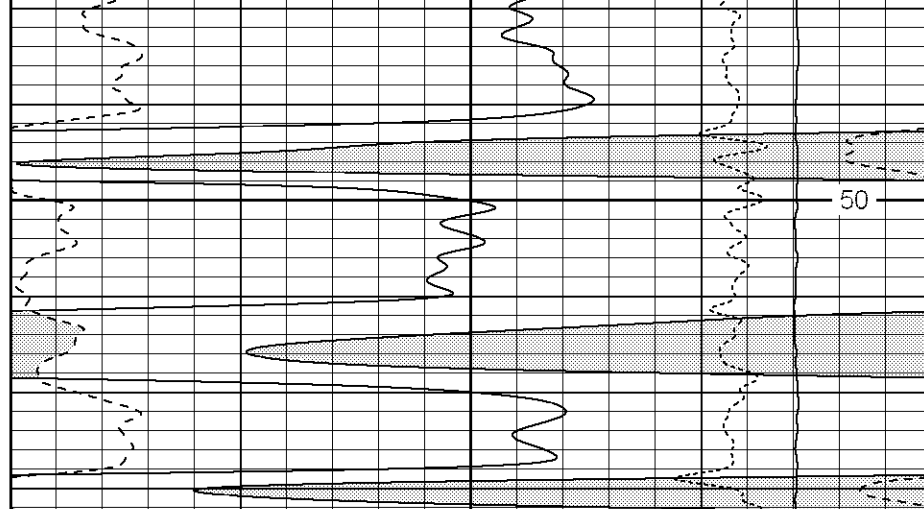


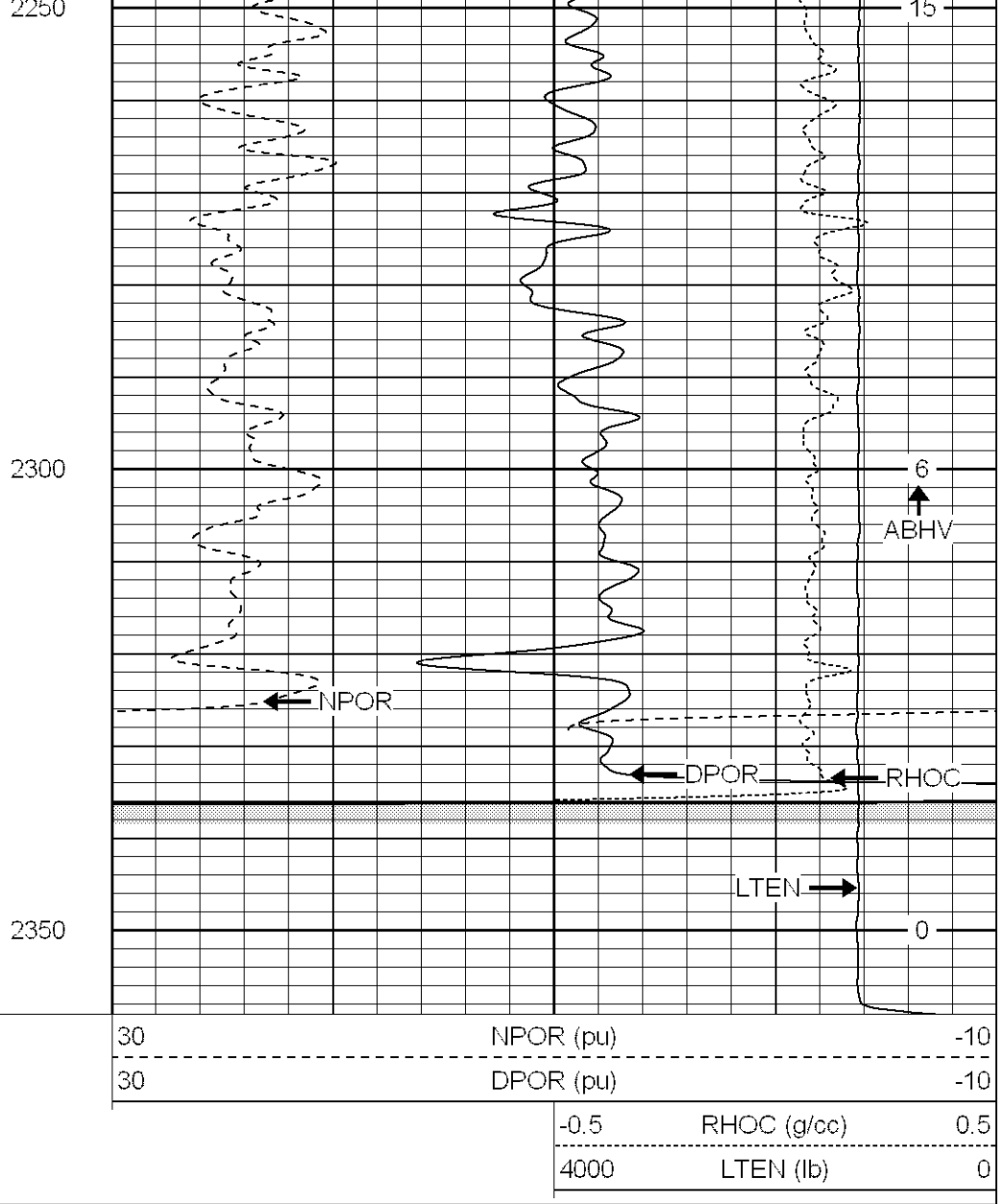
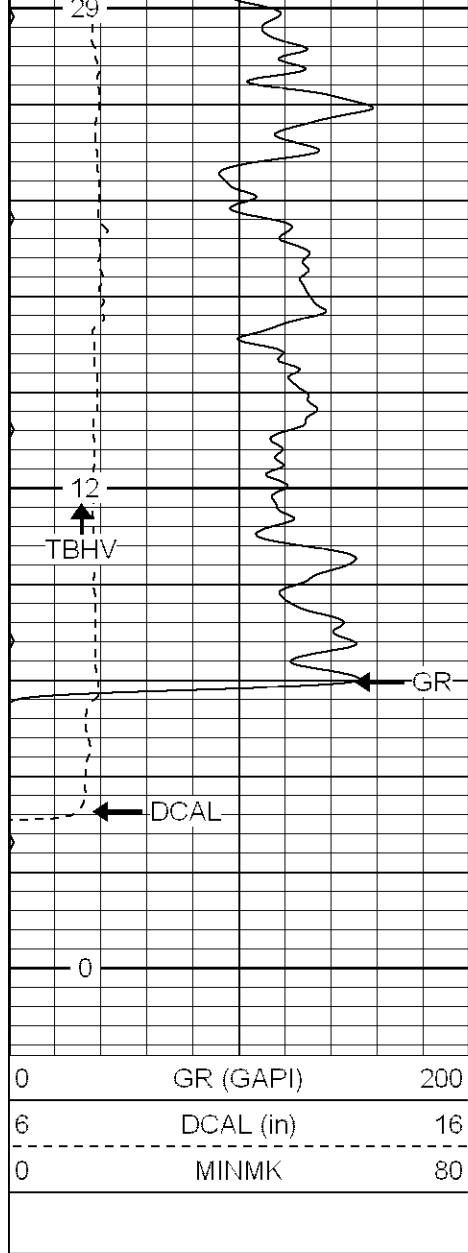






2050





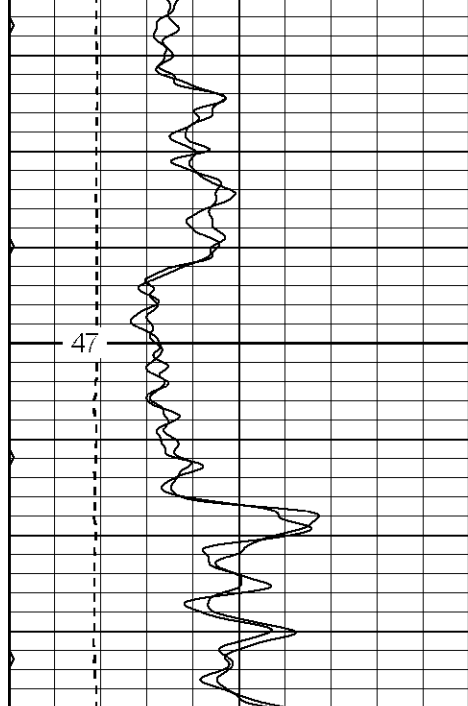
Patterson

Repeat Pass

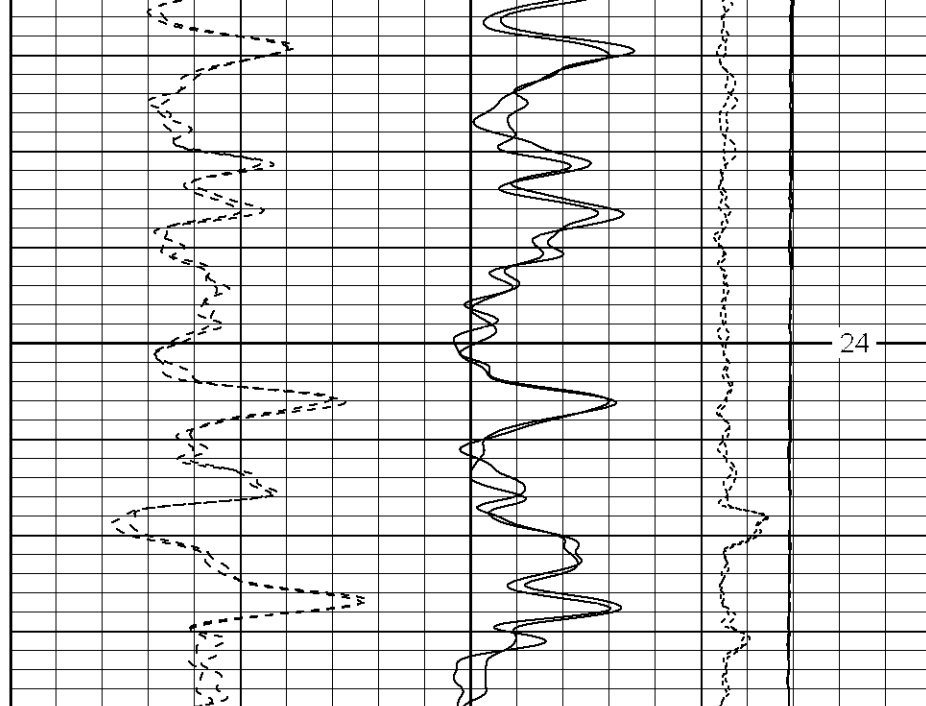
Database File: xtoac1906.db
 Dataset Pathname: pass1.1
 Presentation Format: cdnl
 Dataset Creation: Wed Aug 30 19:50:28 2006 by Calc Warrior 7.0 STD Ope
 Charted by: Depth in Feet scaled 1:240

| | | |
|---|------------------|-----|
| 0 | GR (GAPI) | 200 |
| 6 | DCAL (in) | 16 |
| 0 | MINMK | 80 |
| 0 | GR-repeat (GAPI) | 200 |
| 6 | DCAL-repeat (in) | 16 |

| | | |
|------|--------------------|-----|
| 30 | NPOR (pu) | -10 |
| 30 | DPOR (pu) | -10 |
| 30 | NPOR-repeat (pu) | -10 |
| 30 | DPOR-repeat (pu) | -10 |
| -0.5 | RHOC (g/cc) | 0.5 |
| 4000 | LTEN (lb) | 0 |
| -0.5 | RHOC-repeat (g/cc) | 0.5 |
| 4000 | LTEN-repeat (lb) | 0 |



2200

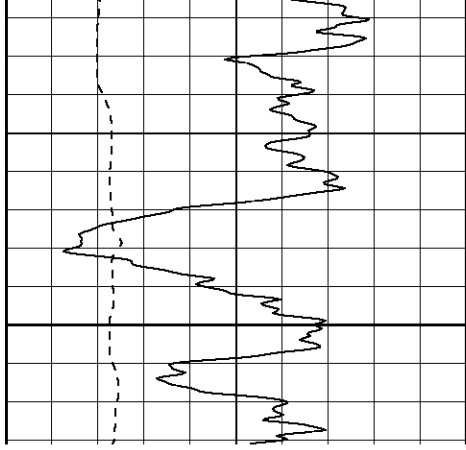


24

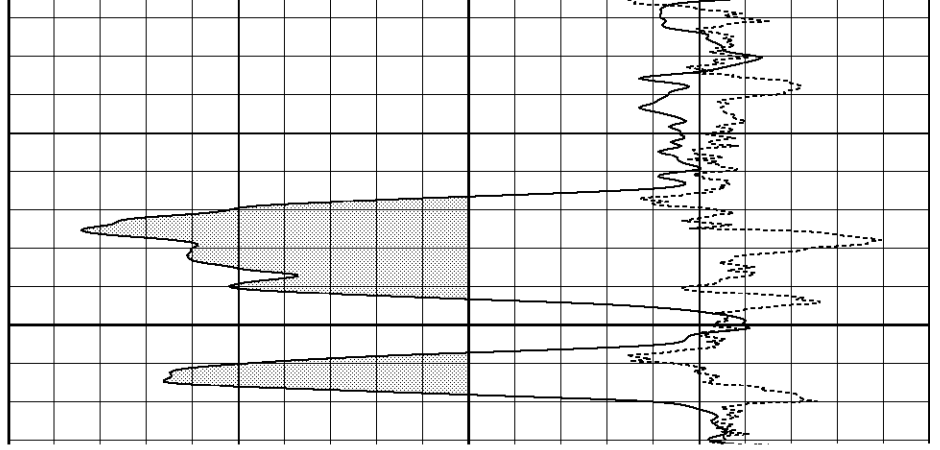
| | | | |
|--|------|--------------------|-----|
| | 4000 | LTEN (lb) | 0 |
| | -0.5 | RHOC-repeat (g/cc) | 0.5 |
| | 4000 | LTEN-repeat (lb) | 0 |

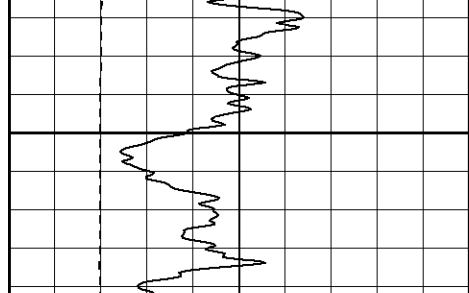
| | |
|------------------|-------------------------------|
| Patterson | <h1>High Resolution Pass</h1> |
|------------------|-------------------------------|

| | |
|----------------------|--------------|
| Database File: | xtoac1906.db |
| Dataset Pathname: | pass2.2 |
| Presentation Format: | edlhr |

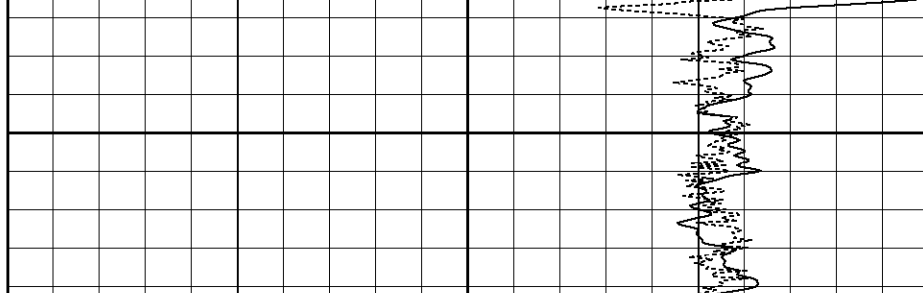


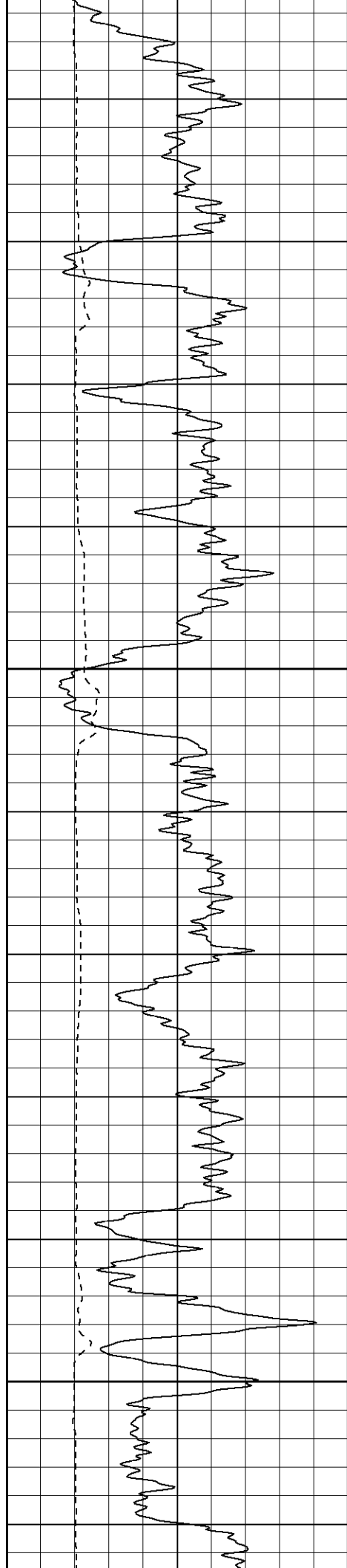
700





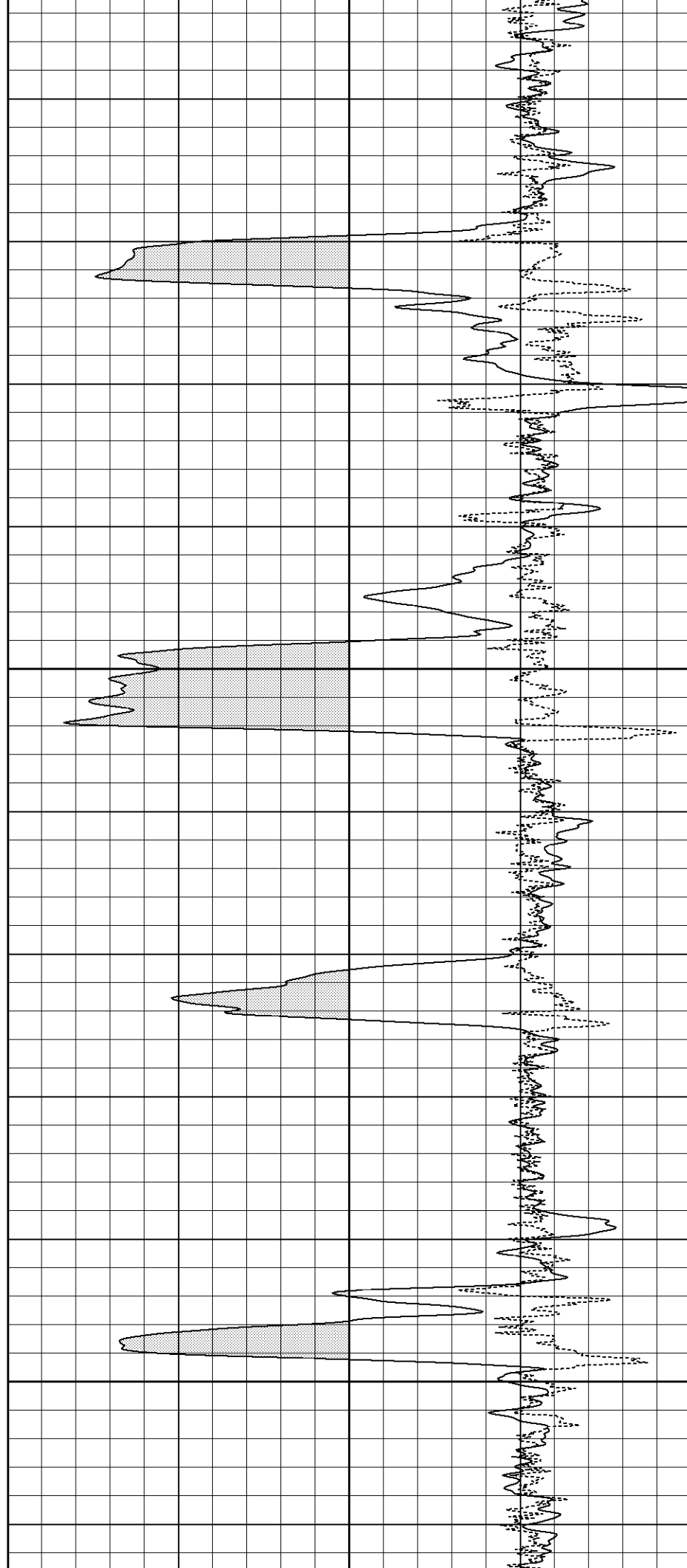
800

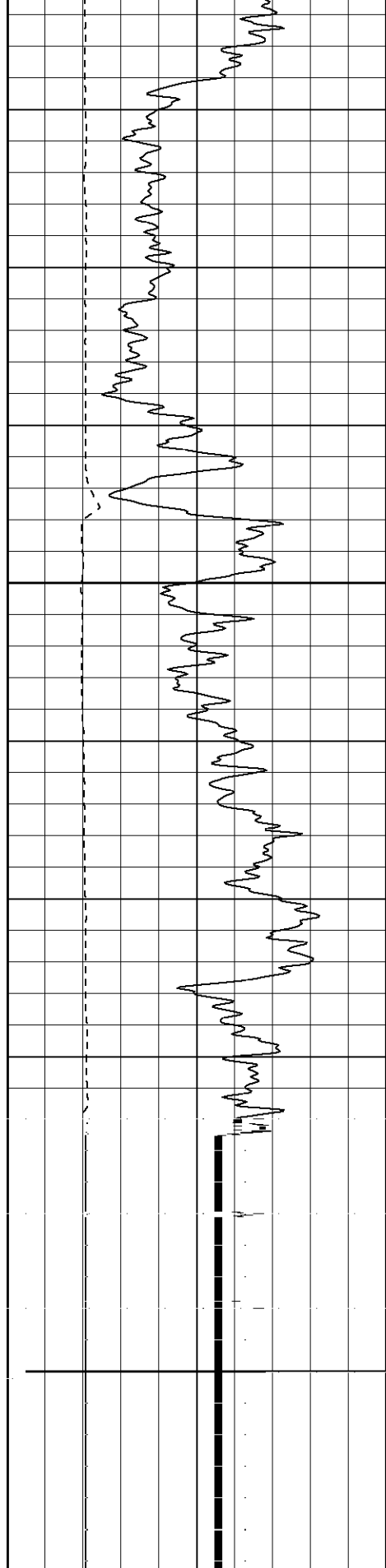




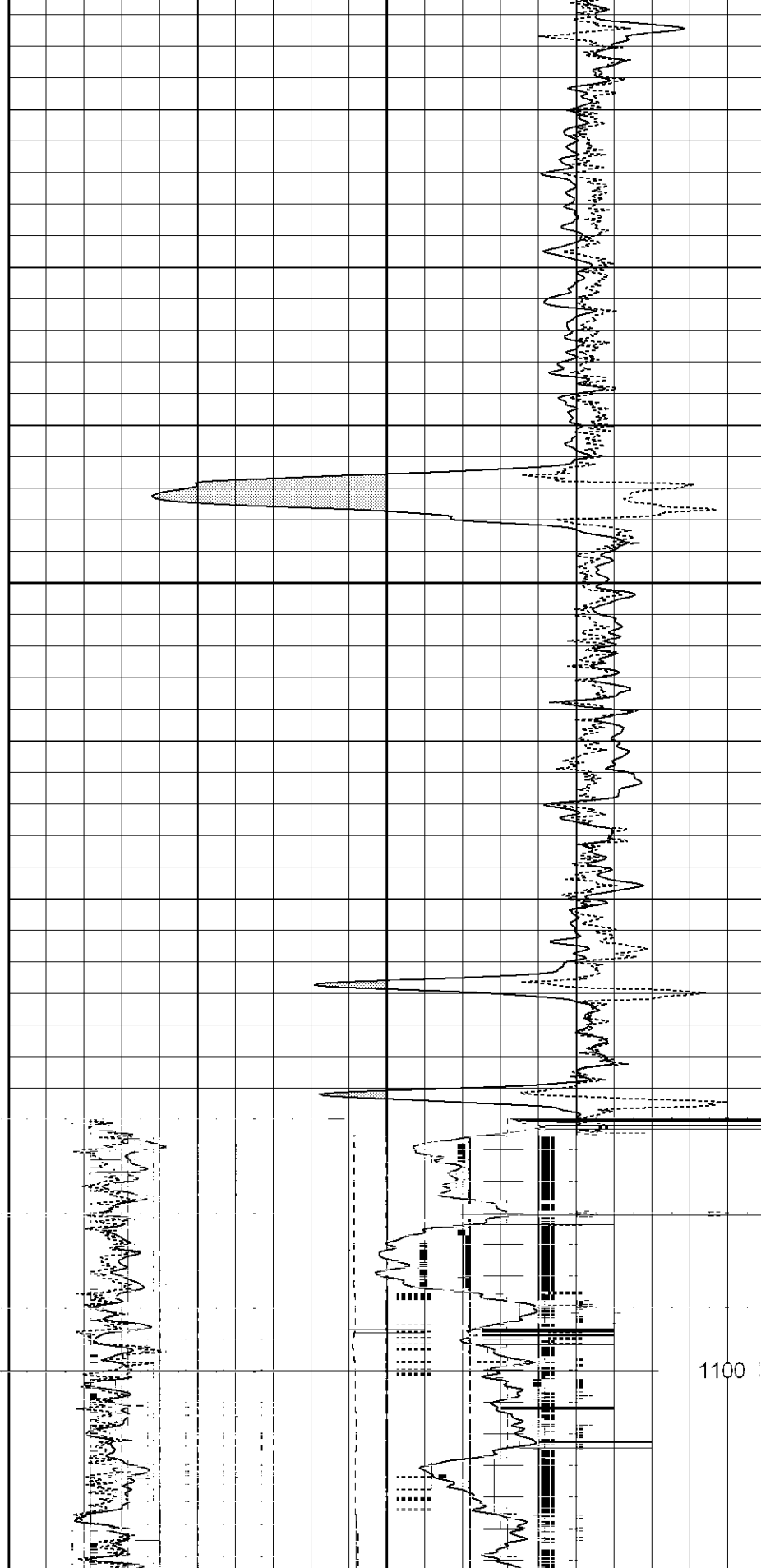
950

1000

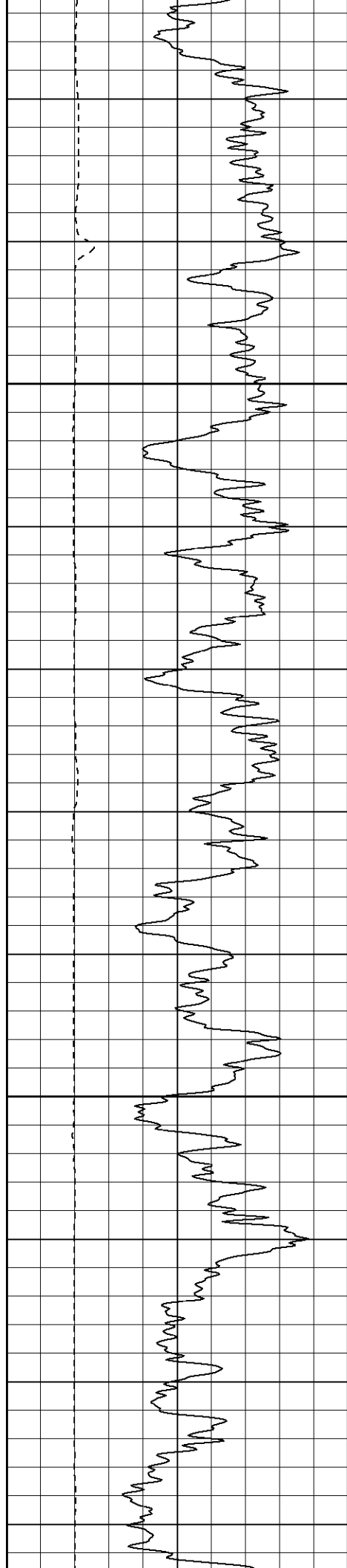




1050

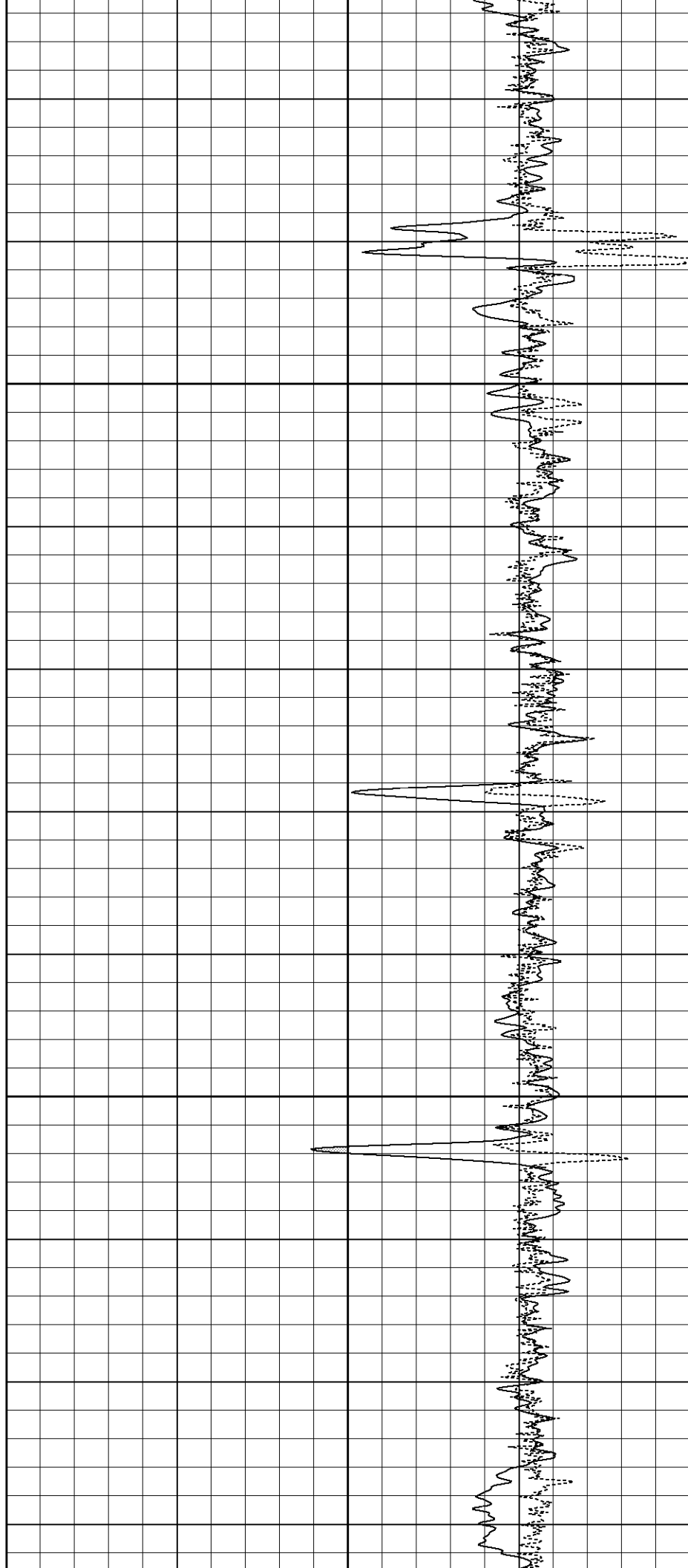


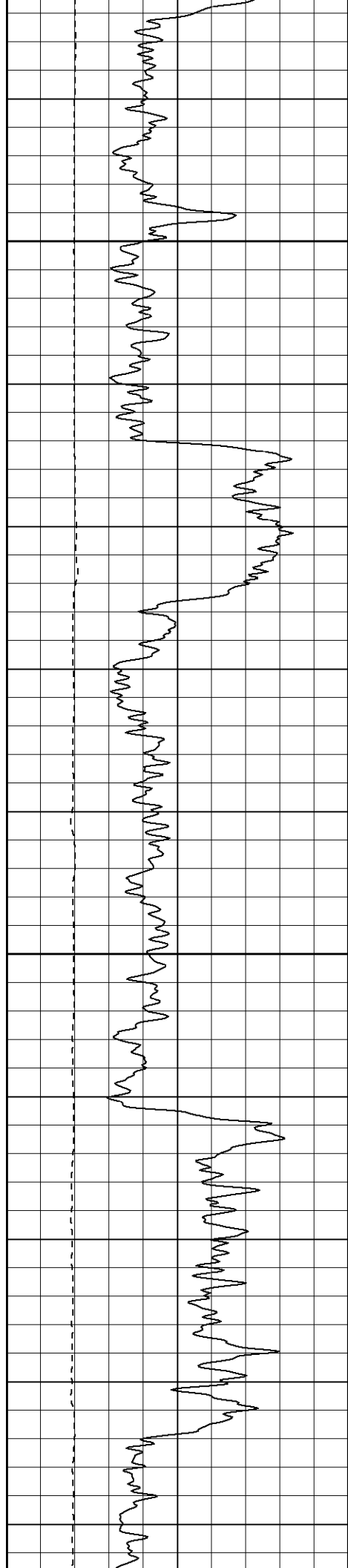
1100



1150

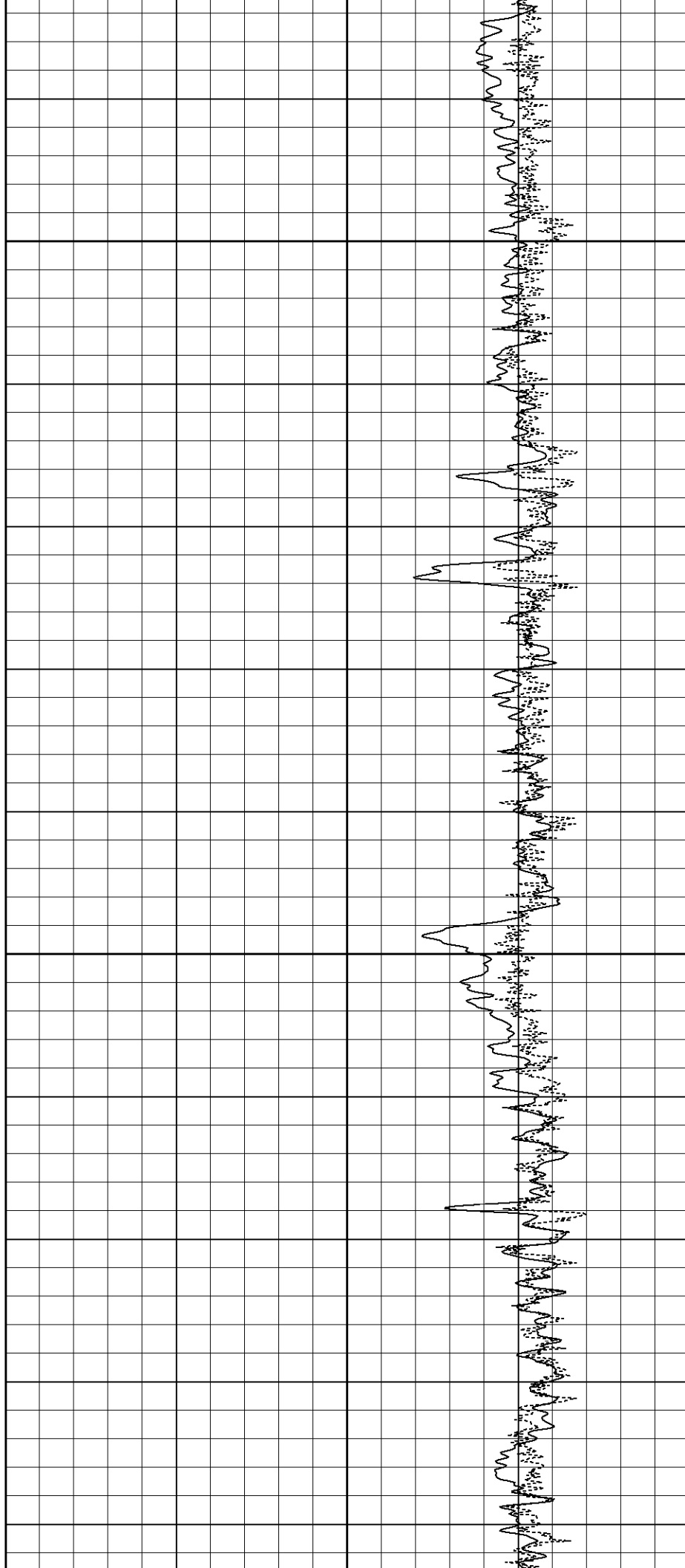
1200

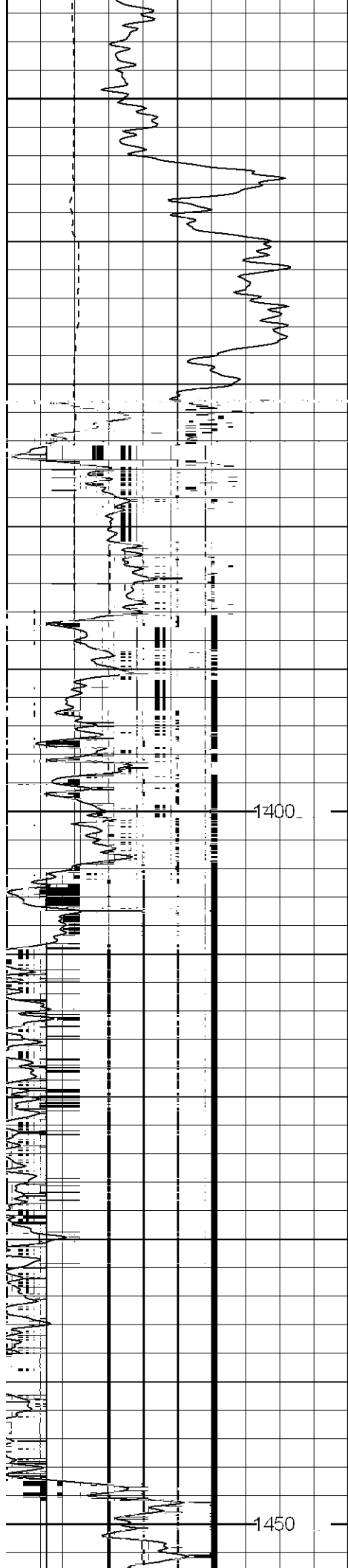




1250

1300

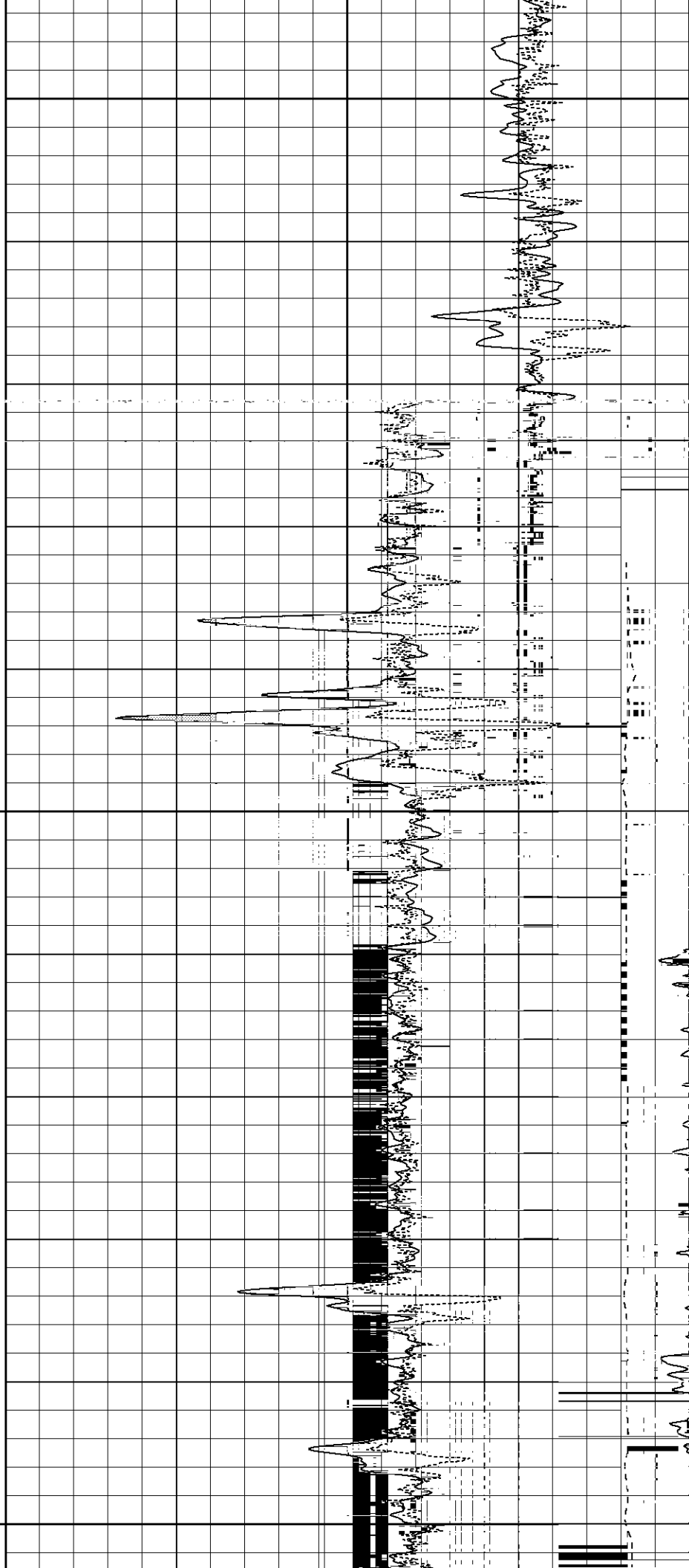


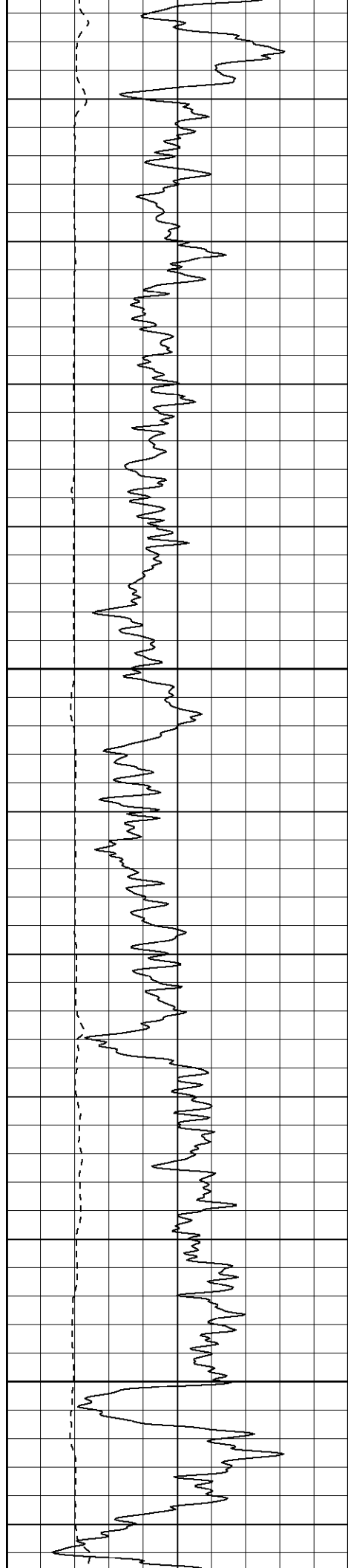


1350

1400

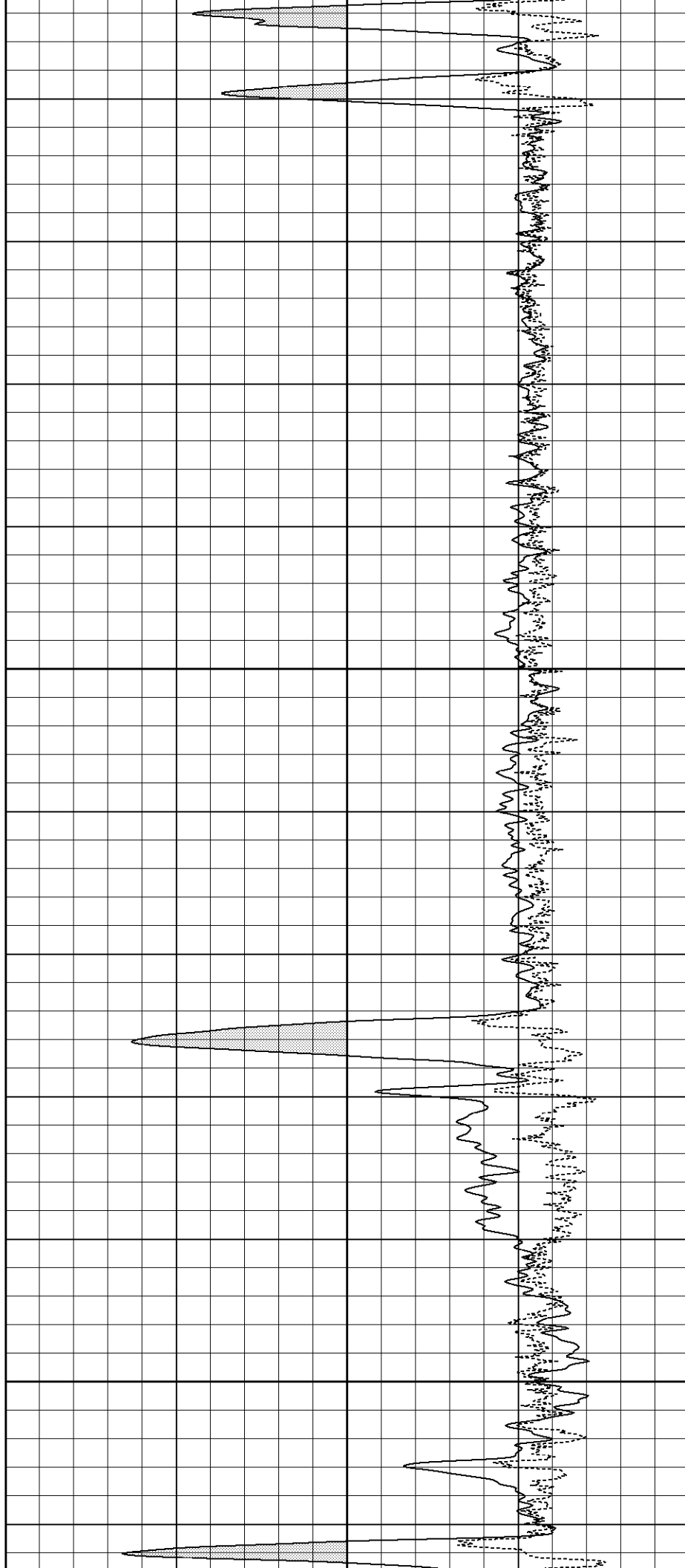
1450

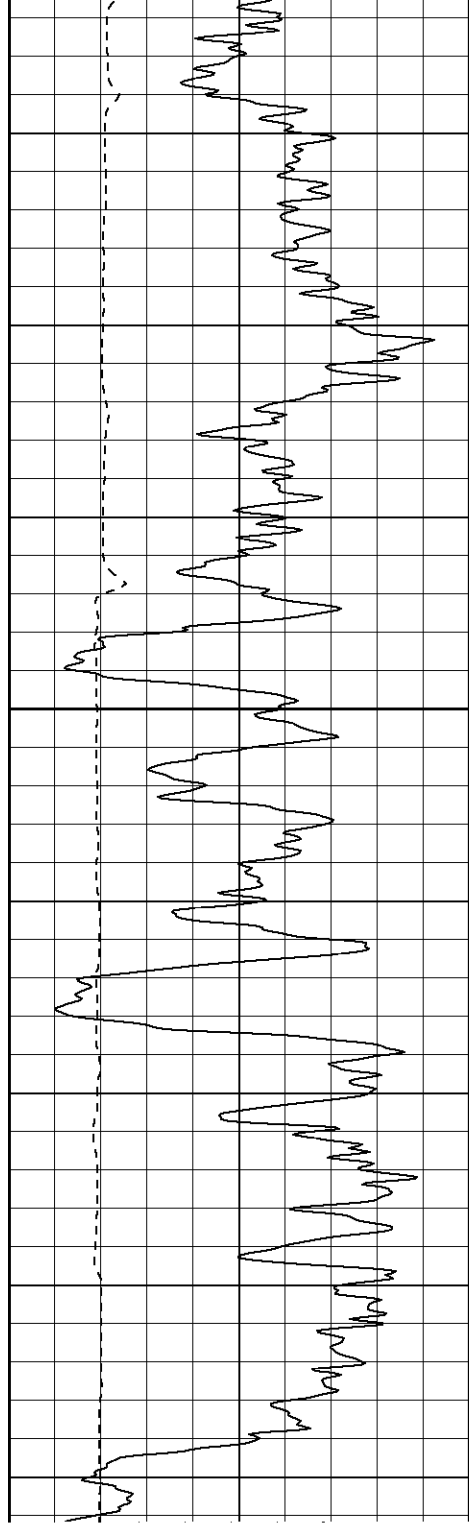




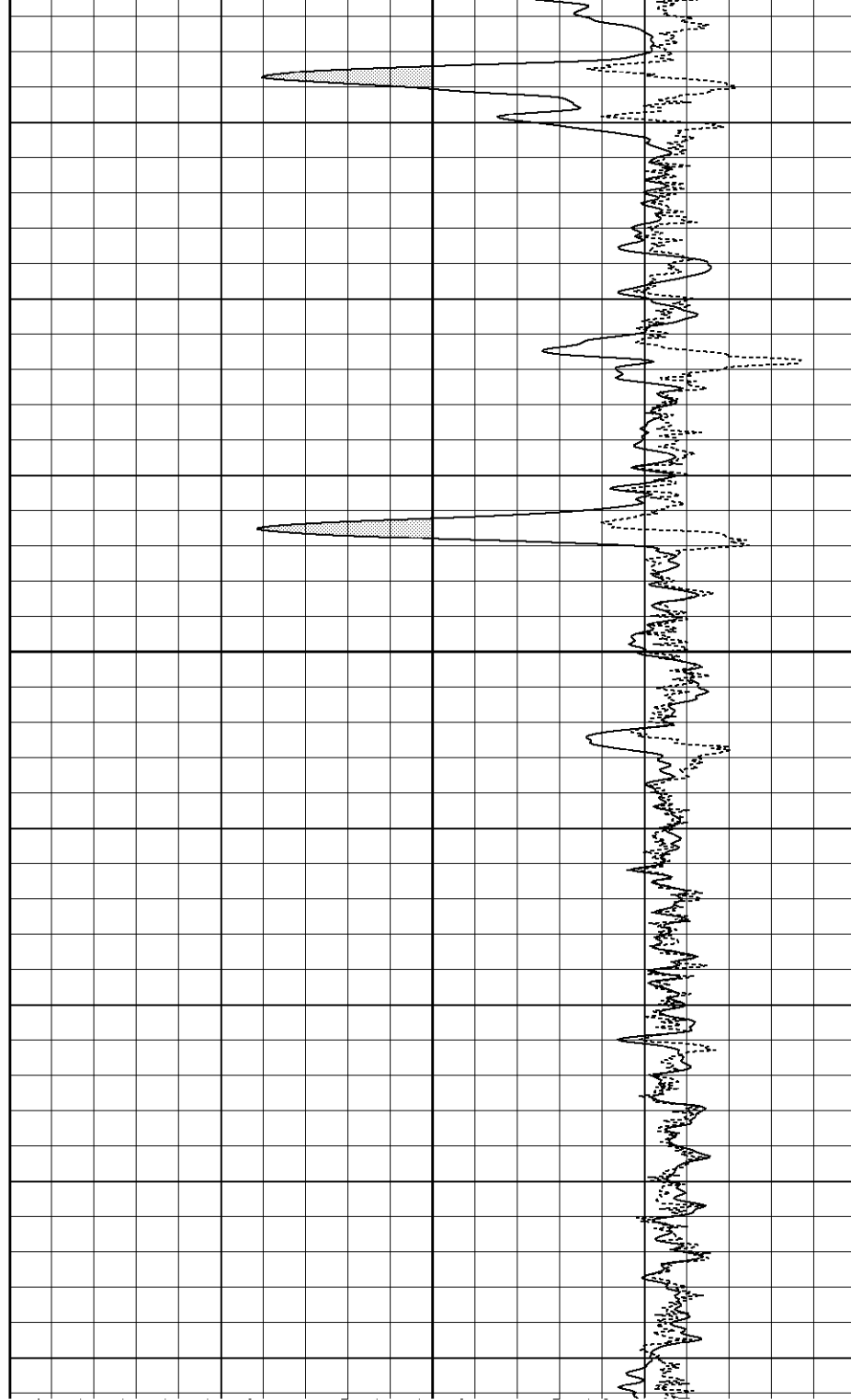
1500

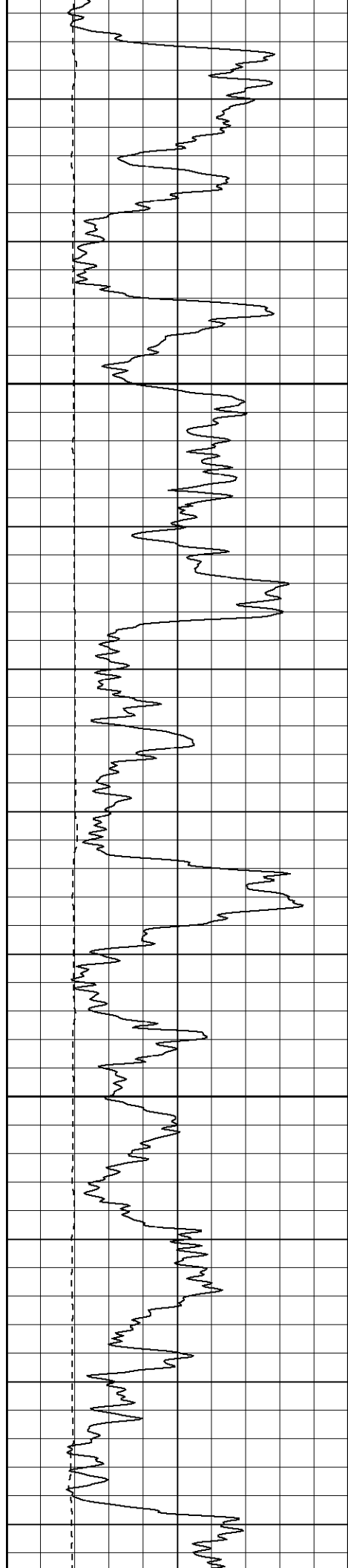
1550





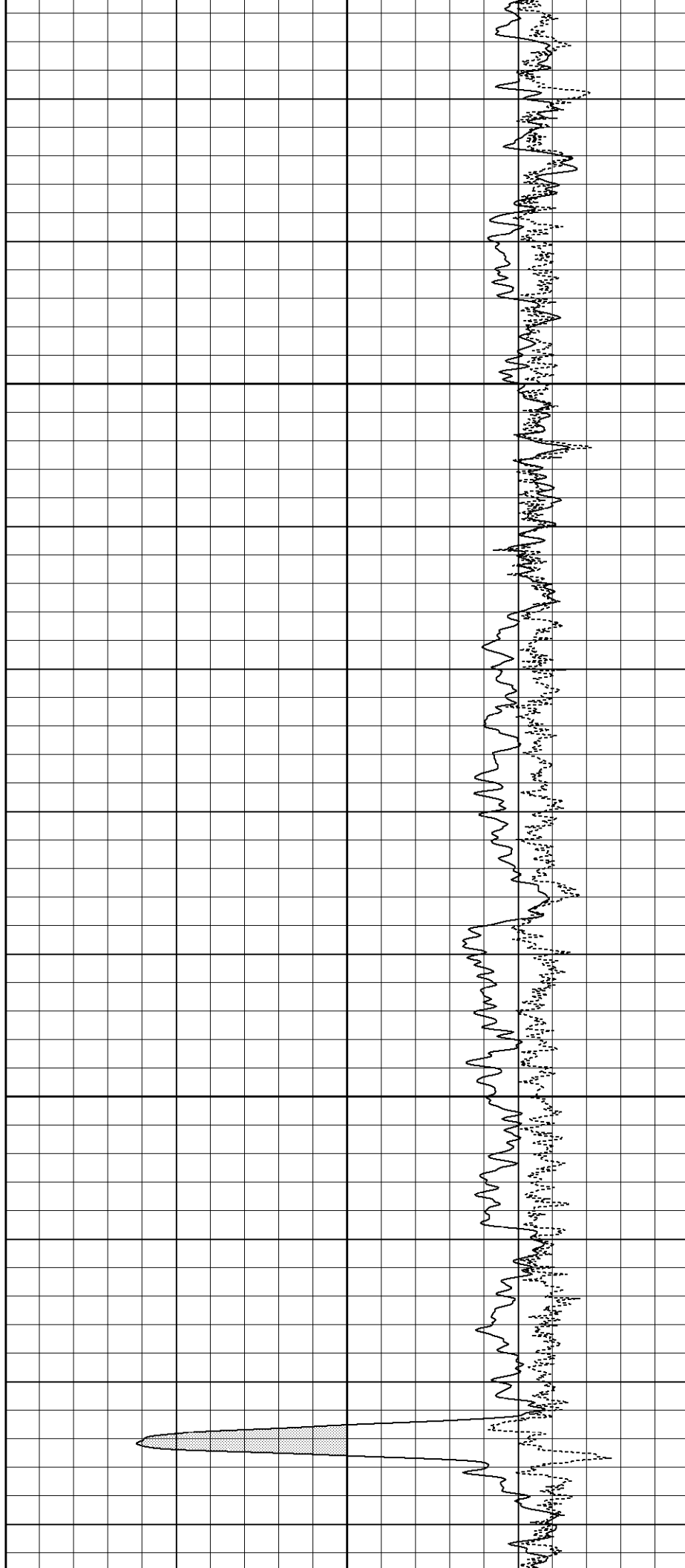
1600

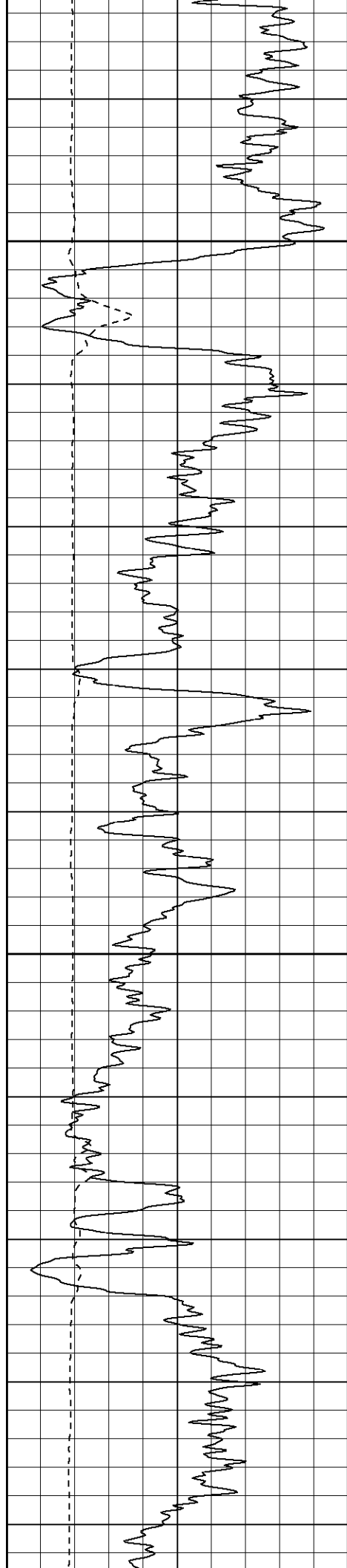




1700

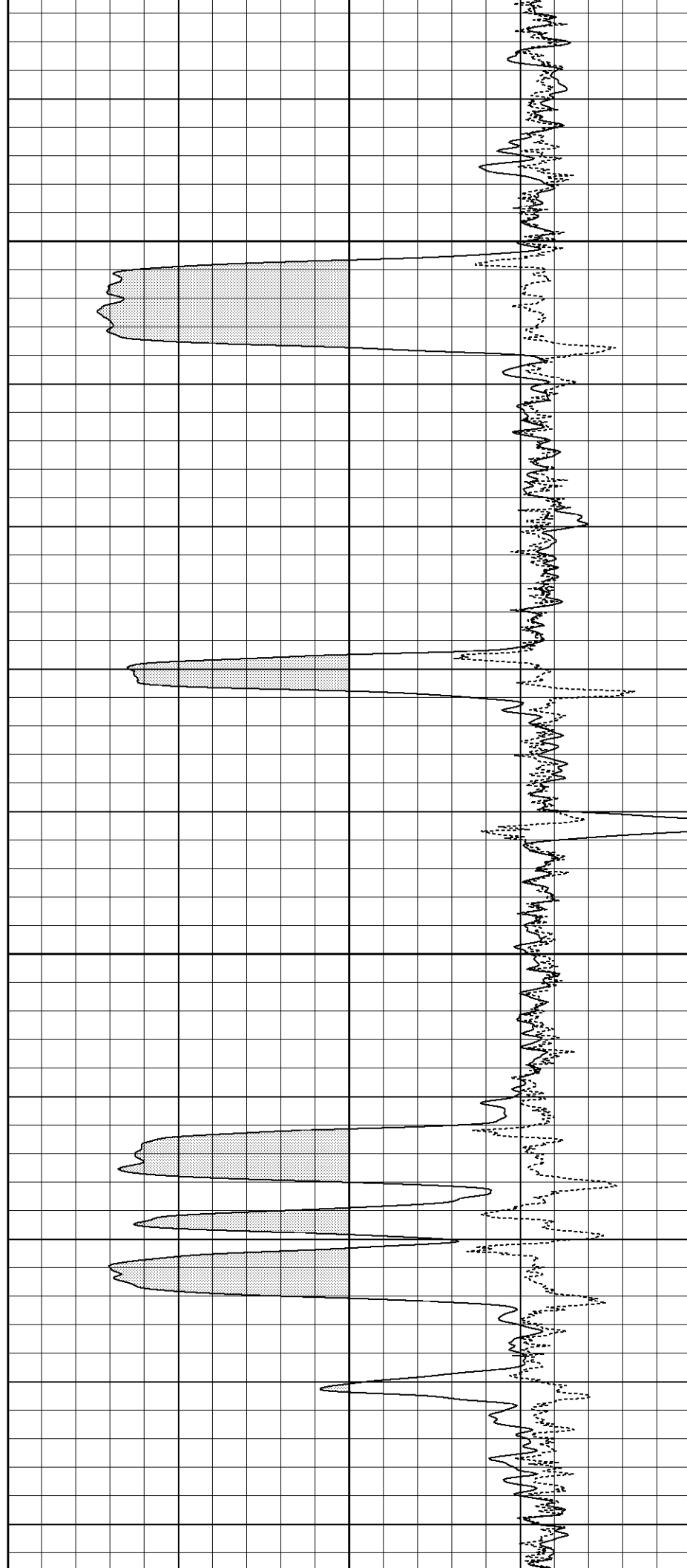
1750

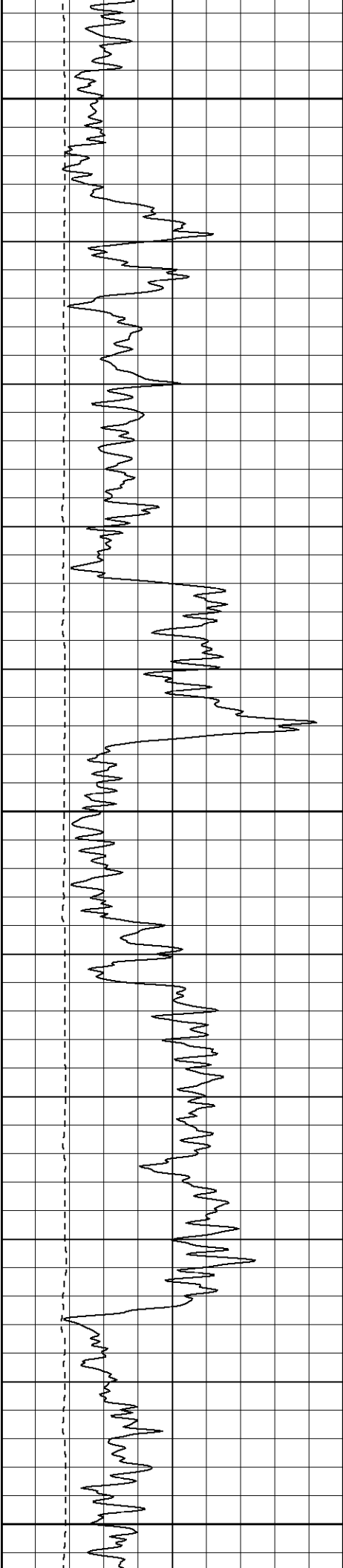




1800

1850

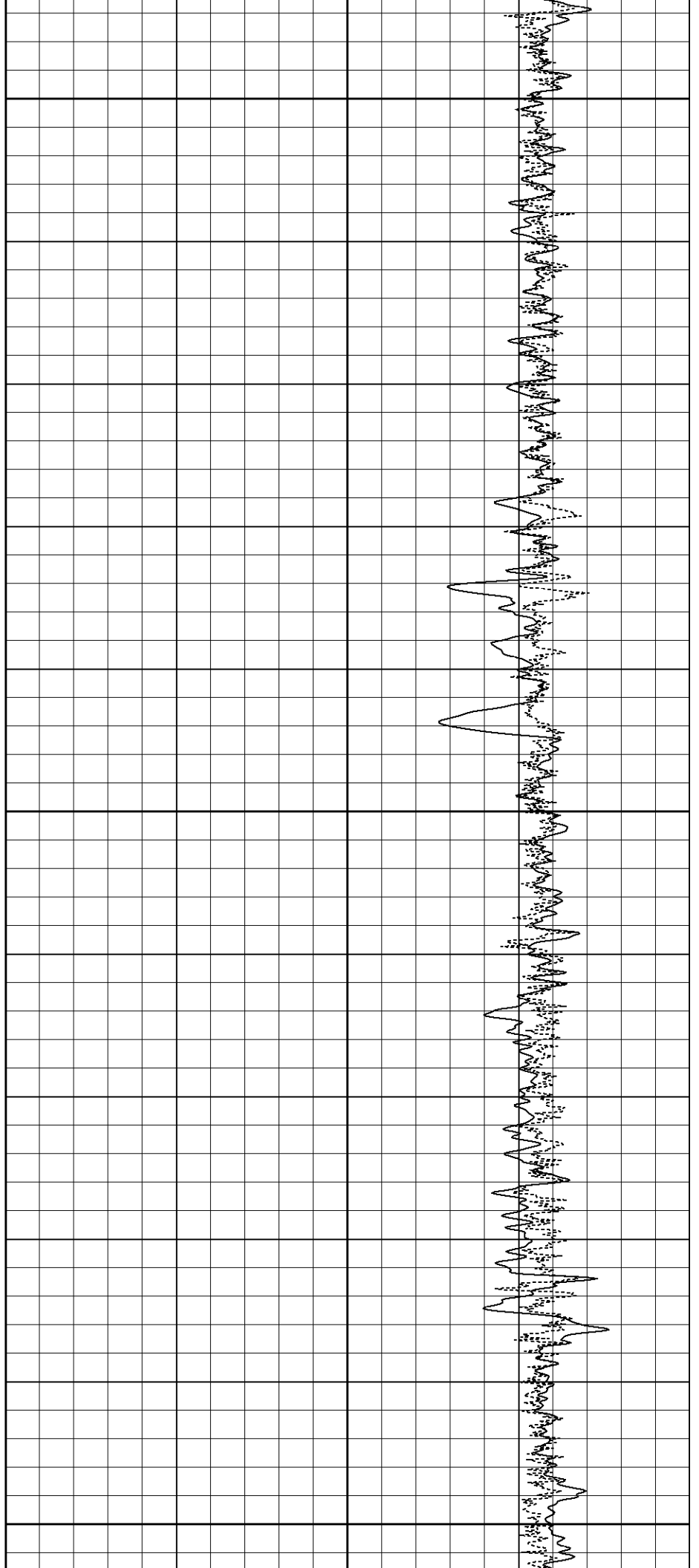


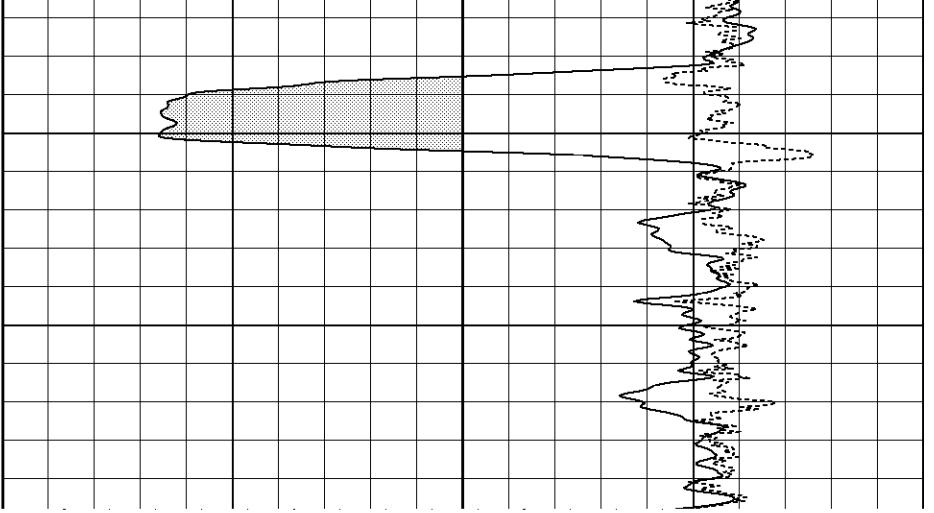
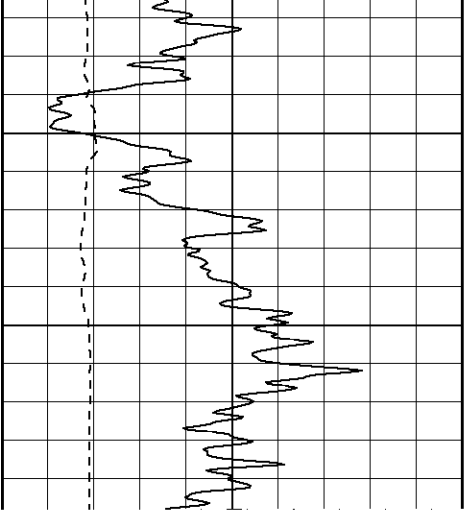


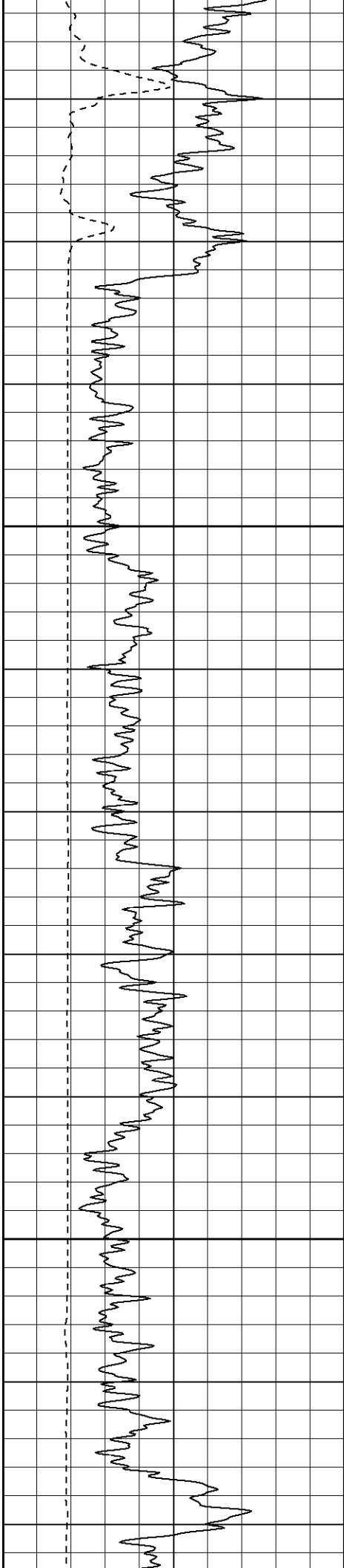
1900

1950

2000

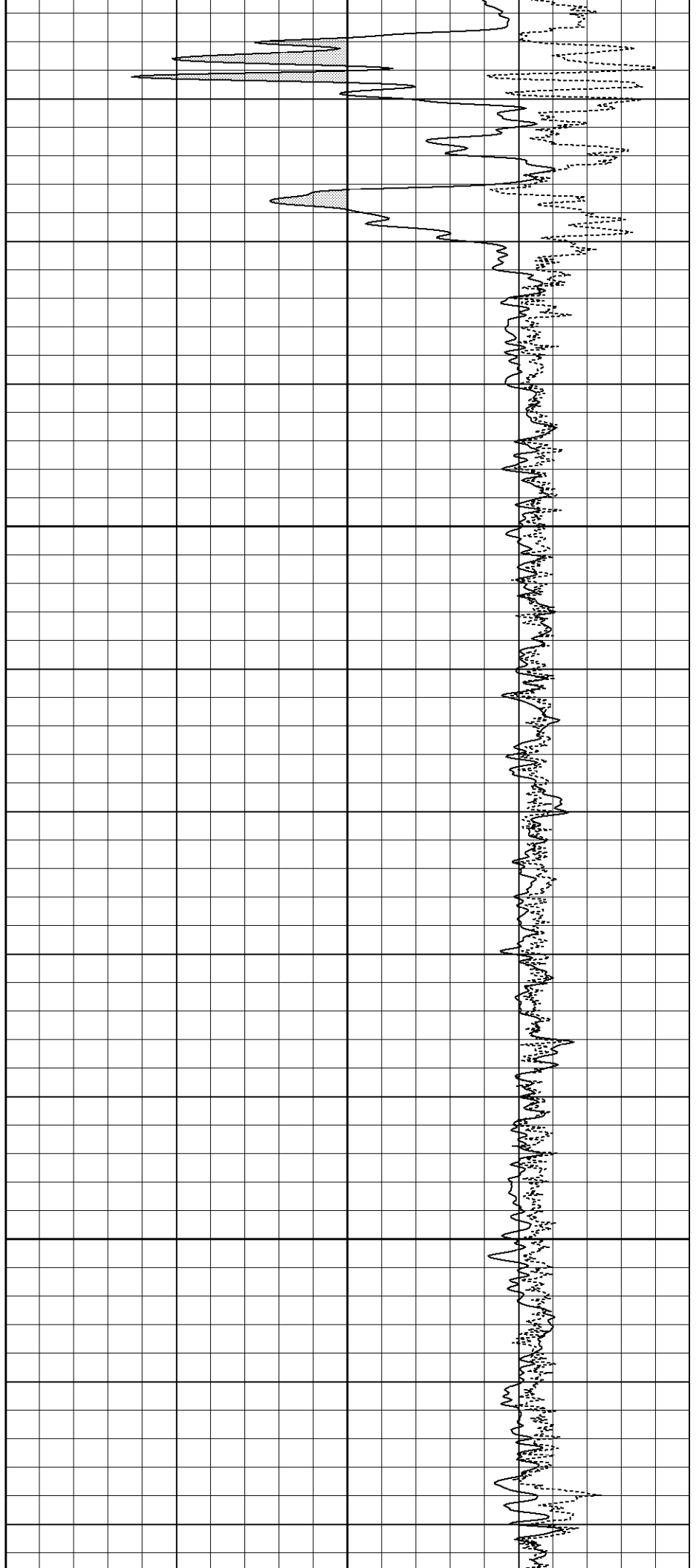


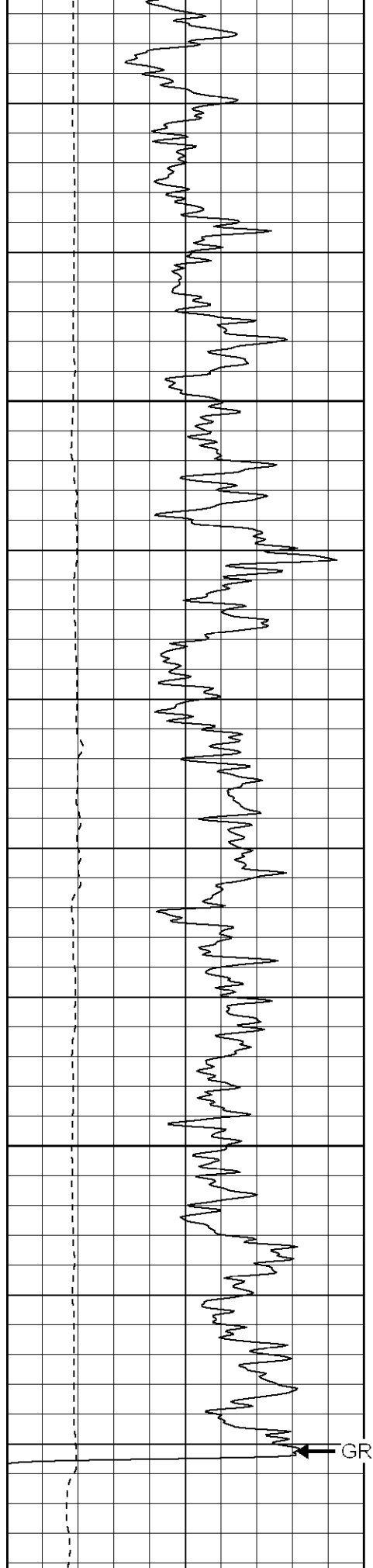




2150

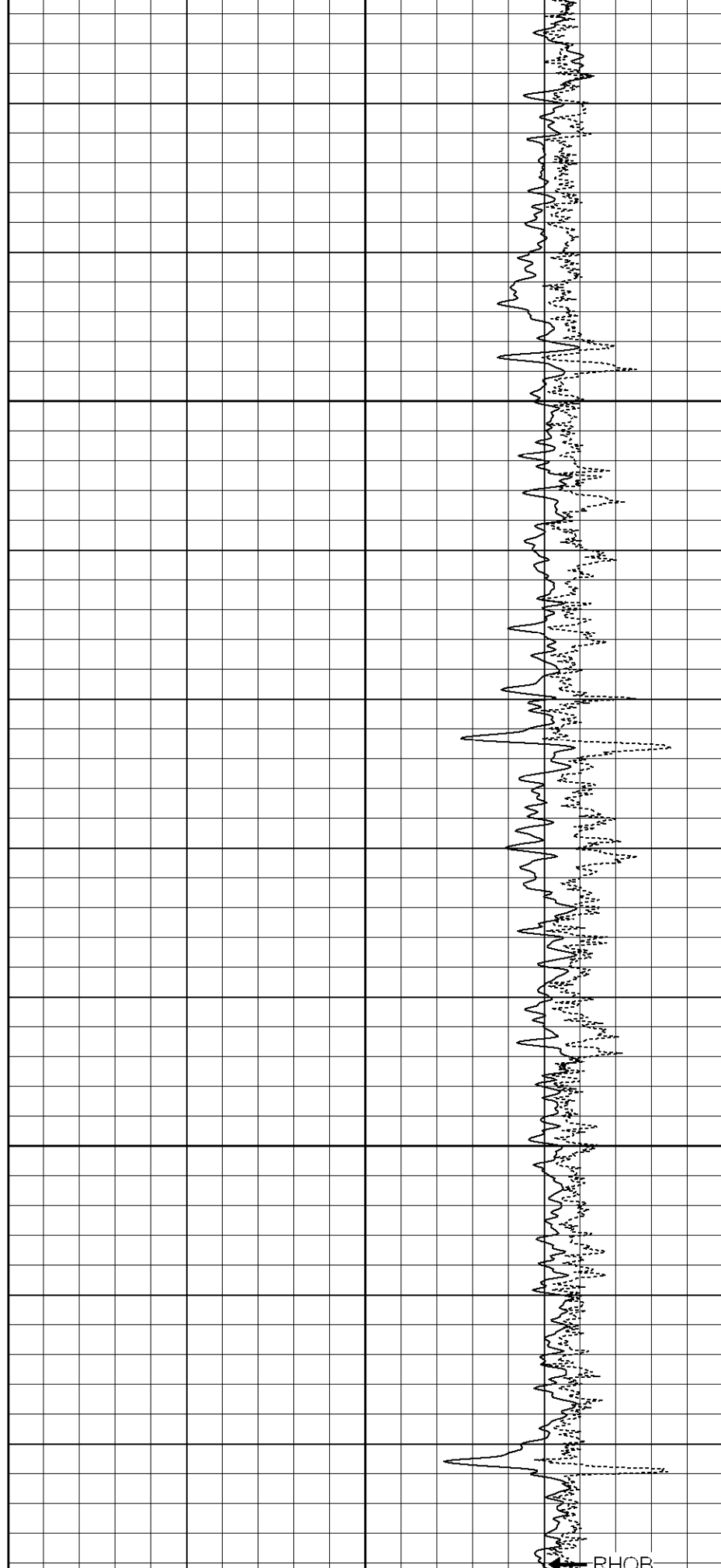
2200

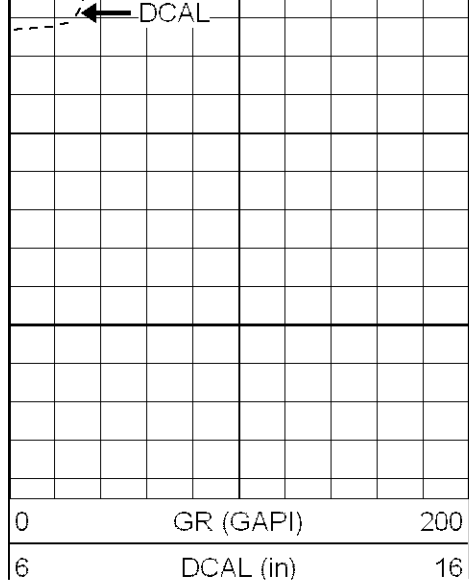




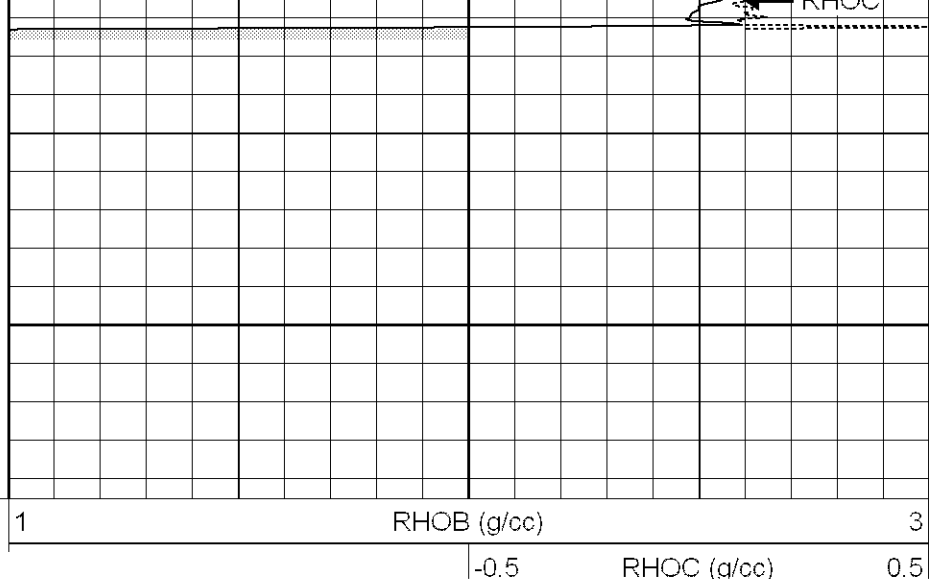
2250

2300





2350



Spine Angle = 67.85

Density/Spine Ratio = 0.474

Spine Angle = 67.85

Density/Spine Ratio = 0.474

| | Size | | Reading | |
|------------|-------|----|---------|---|
| Small Ring | 8.10 | in | 1.84 | V |
| Large Ring | 17.00 | in | 4.32 | V |

| Neutron Calibration Report | | | |
|----------------------------|--------------------------|----------|--|
| Serial Number: | 802 | | |
| Tool Model: | 2.75POH | | |
| Performed: | Thu Aug 24 12:48:24 2006 | | |
| Calibrator Value: | 1 | NAPI | |
| Calibrator Reading: | 1 | cps | |
| Sensitivity: | 1 | NAPI/cps | |

| Gamma Ray Calibration Report | | | |
|------------------------------|--------------------------|----------|--|
| Serial Number: | 804 | | |
| Tool Model: | 2.75POH | | |
| Performed: | Mon Aug 21 14:48:38 2006 | | |
| Calibrator Value: | 1.0 | GAPI | |
| Background Reading: | 0.0 | cps | |
| Calibrator Reading: | 1.0 | cps | |
| Sensitivity: | 0.8100 | GAPI/cps | |

| Sensor | Offset (ft) | Schematic | Description | Len (ft) | OD (in) | Wt (lb) |
|--------|-------------|-----------|---------------------------------------|----------|---------|---------|
| CHD | 39.37 | | None | 0.75 | 1.50 | 5.00 |
| GR | 37.84 | | GR-2.75POH (804) Probe | 3.73 | 2.75 | 43.00 |
| NEU | 32.30 | | NEU-2.75POH (802) Probe Epithermal | 4.75 | 2.75 | 58.00 |
| LSD | 24.47 | | CDL-2.75POH (902) Probe | 8.43 | 2.75 | 106.00 |
| DCAL | 24.19 | | Probe | 0.89 | 3.50 | 20.00 |
| SSD | 23.95 | | | | | |
| 10pin | 21.72 | | | | | |

| | | | | | |
|---|----------------|--|-------|------|--------|
| CILD SP | 10.60 10.60 | | 20.83 | 4.00 | 345.00 |
| CILM | 6.89 | | | | |
| RLL3 | 1.70 | | | | |
| Dataset: /field/well/run1/_plots/_jobs_/cdnl Total Length: 39.37 ft Total Weight: 577.00 lb O.D. 4.00 in | | | | | |