

| | | | | | | | | | |
|------------------------|--|---------------------------------------------|------|-------|------|--------|------|--------|--|
| Company | | EnCana Oil & Gas (USA) Inc. | | | | | | | |
| Well | | Costigan 33-20 | | | | | | | |
| Field | | Wattenberg | | | | | | | |
| County | | Weld | | | | | | | |
| State/Prov | | Colorado | | | | | | | |
| Location | | 1983 FN. & 1978 FEL NW SE - 1N Rge - 68W | | | | | | | |
| Other Services | | None | | | | | | | |
| Permanent Team | | GL | | | | | | | |
| Log Measured From | | HB | | | | | | | |
| Drilling Measured From | | HB | | | | | | | |
| Date Entered | | July 5, 2006 | | | | | | | |
| Date Entered | | K.B. 3155 D.L. 3159 | | | | | | | |
| Depth (m) | | 8771 | | | | | | | |
| Depth (ft) | | 8860 | | | | | | | |
| Tool Joint Interval | | 600' | | | | | | | |
| Open Hole Size | | 7 7/8" | | | | | | | |
| Water | | | | | | | | | |
| Type and Locality | | | | | | | | | |
| Max. Recorded Temp. | | 228 | | | | | | | |
| Estimated Cement Top | | 1020 | | | | | | | |
| Time Well Test Started | | 1000 | | | | | | | |
| Engineer Number | | 4075 | | | | | | | |
| Location By | | Bjorklin | | | | | | | |
| Witnessed By | | Tom Cahn | | | | | | | |
| Borehole Record | | Tubing Record | | | | | | | |
| Run Number | | Bit | From | To | Size | Weight | From | To | |
| Casing Record | | Size | | Wt/Lf | | Top | | Bottom | |
| Surface String | | | | | | | | | |
| Production String | | | | | | | | | |
| Liner | | | | | | | | | |

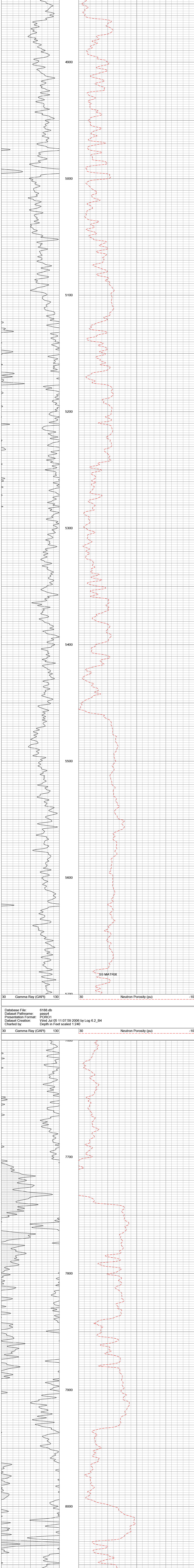
<<< Fold Here >>>

All interpretations are opinions based on inferences from electrical or other measurements and we cannot and do not guarantee the accuracy or correctness of any interpretation, and we shall not, except in the case of gross or willful negligence on our part, be liable or responsible for any loss, costs, damages, or expenses incurred or sustained by anyone resulting from any interpretation made by any of our officers, agents or employees. These interpretations are also subject to our general terms and conditions set out in our current Price Schedule.

Comments

Thank you for using Phoenix Surveys
API #: 05-123-23057-00

Database File: 6188 db
Dataset Pathname: pass4.1
Presentation Format: PORO1
Dataset Creation: Wed Jul 05 12:06:42 2006 by Calc 6.2_B4
Charted by: Depth in Feet scaled 1:240



Database File: 6188 db
Dataset Pathname: pass4
Presentation Format: PORO1
Dataset Creation: Wed Jul 05 11:07:59 2006 by Log 6.2_B4
Charted by: Depth in Feet scaled 1:240

