

**Patterson**

**CEMENT BOND  
GAMMA RAY**

Company XTO Energy Inc.  
Well Golden Eagle 20-14  
Field Purgatorie River  
County Las Animas  
State CO

Company XTO Energy Inc.  
Well Golden Eagle 20-14  
Field Purgatorie River  
County Las Animas  
State CO

Location: API #: 05 071 08614 00

587' FSL & 2478' FWL

SEC 20 TWP 33S RGE 67W

Permanent Datum Ground Level Elevation 7408'  
Log Measured From Ground Level  
Drilling Measured From Ground Level

Elevation

K.B.  
D.F.  
G.L. 7408'

Date 12/10/05

Run Number one  
Depth Driller 736  
Depth Logger 700'  
Bottom Logged Interval 696'  
Top Log Interval Surf.  
Open Hole Size 11"  
Type Fluid water  
Density / Viscosity ///  
Max. Recorded Temp. ///  
Estimated Cement Top NA  
Time Well Ready 3:30  
Time Logger on Bottom 3:40  
Equipment Number T244  
Location Trinidad  
Recorded By Worley

Witnessed By

Borehole Record Bit From To Size Weight From To

Casing Record Surface String Size Wgt/Ft Top Bottom

Prot. String

Production String 8 5/8" 00 723'

Liner

<<< Fold Here >>>

All interpretations are opinions based on inferences from electrical or other measurements and we cannot and do not guarantee the accuracy or correctness of any interpretation, and we shall not, except in the case of gross or willful negligence on our part, be liable or responsible for any loss, costs, damages, or expenses incurred or sustained by anyone resulting from any interpretation made by any of our officers, agents or employees. These interpretations are also subject to our general terms and conditions set out in our current Price Schedule.

Comments

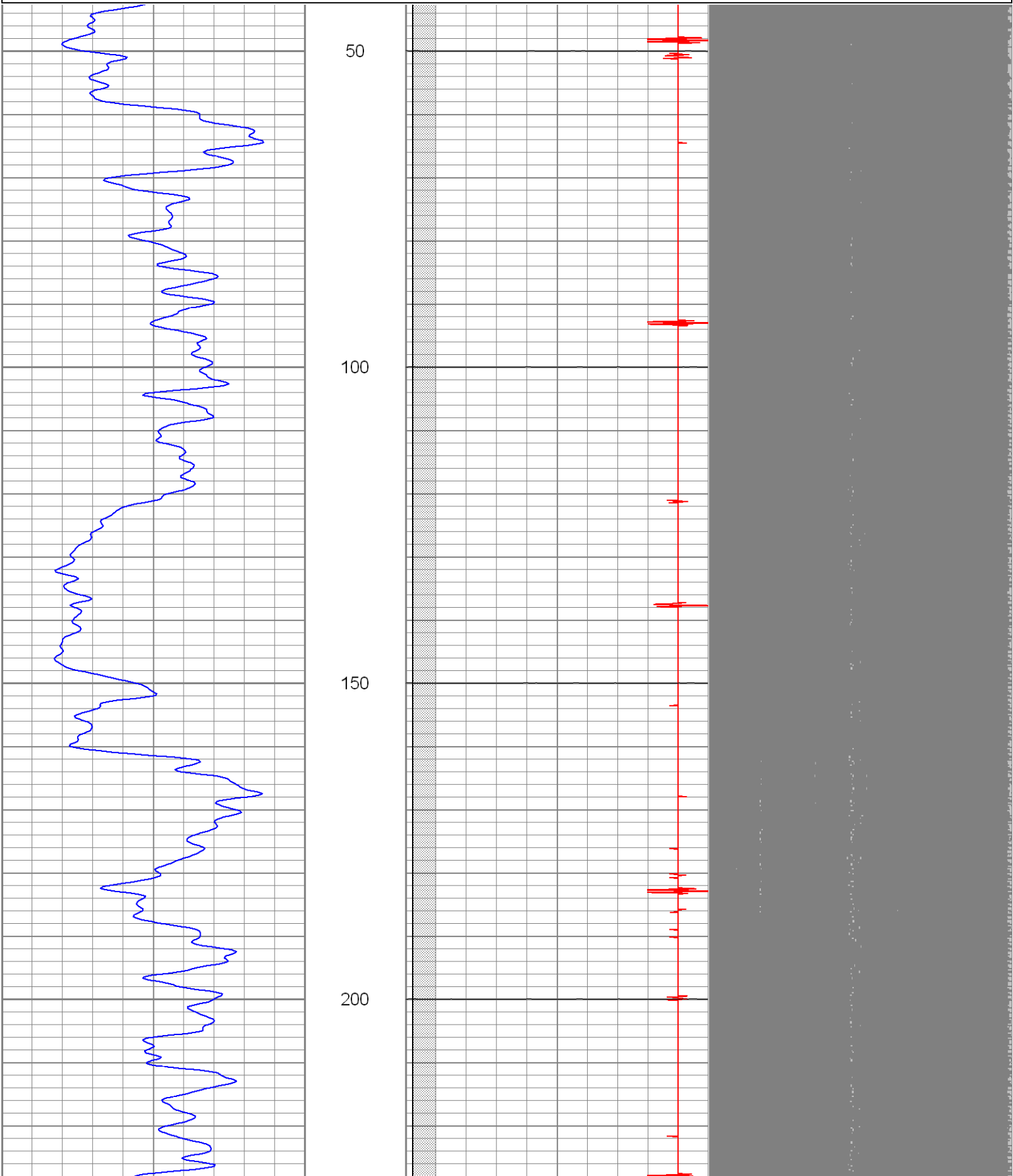
4 Miles From Weston, Turn Right, Go Thru Gate, Stay On Main Road To T, Go Right Up Hill,  
At Compressor Go Right, Next Y Go Right, Stay On Main Road, Dead End On Location.

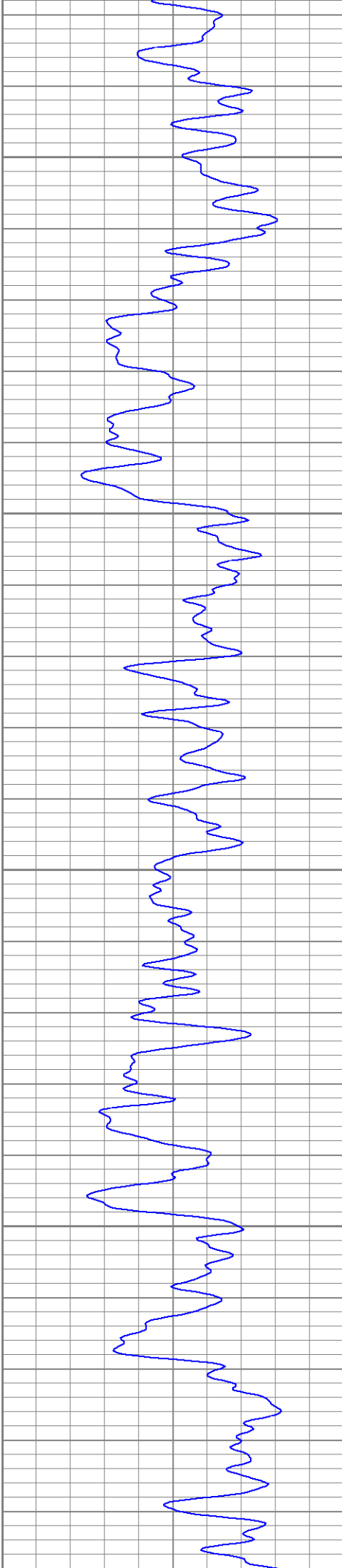
**Patterson**

**Main Pass**

Database File: ge20-14b121005.db  
Dataset Pathname: pass2  
Presentation Format: cblrt  
Dataset Creation: Sat Dec 10 15:54:00 2005 by Log Warrior 7.0 STD Cas  
Charted by: Depth in Feet scaled 1:240

0	GR (GAPI)	200	0	AMP3 (mV)	100	200	Variable Density	1200
400	TT3 (usec)	200	18	CCL	-2			
			200	CBL5	1200			





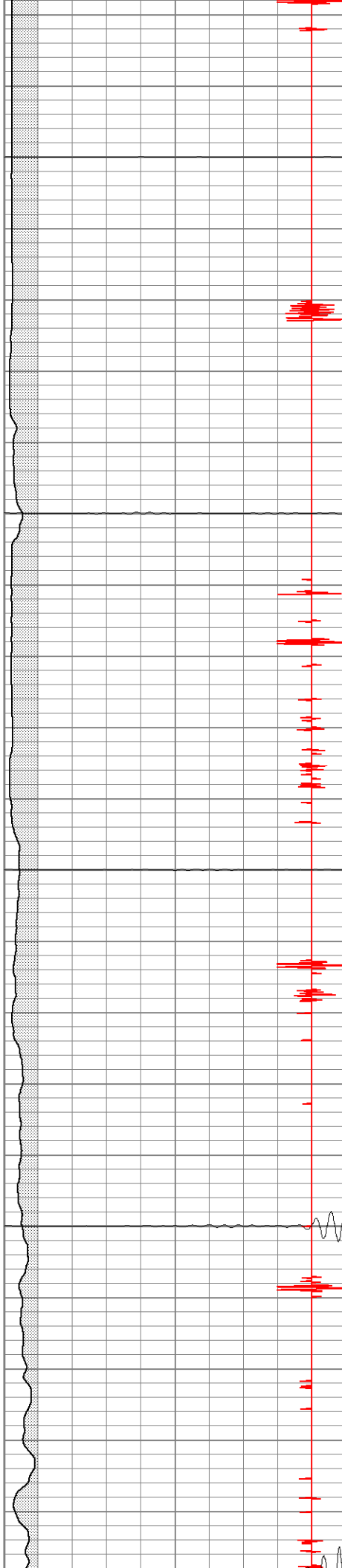
250

300

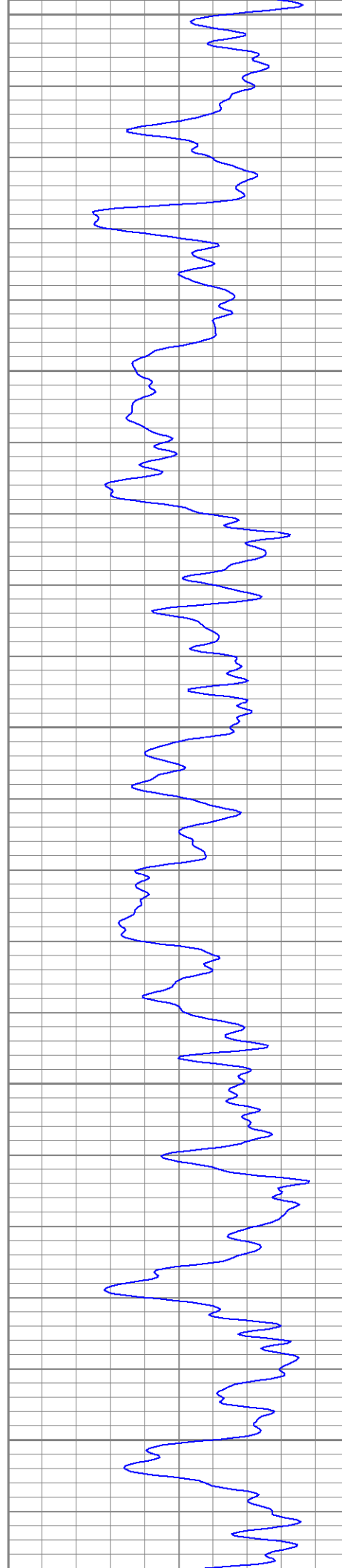
350

AIR

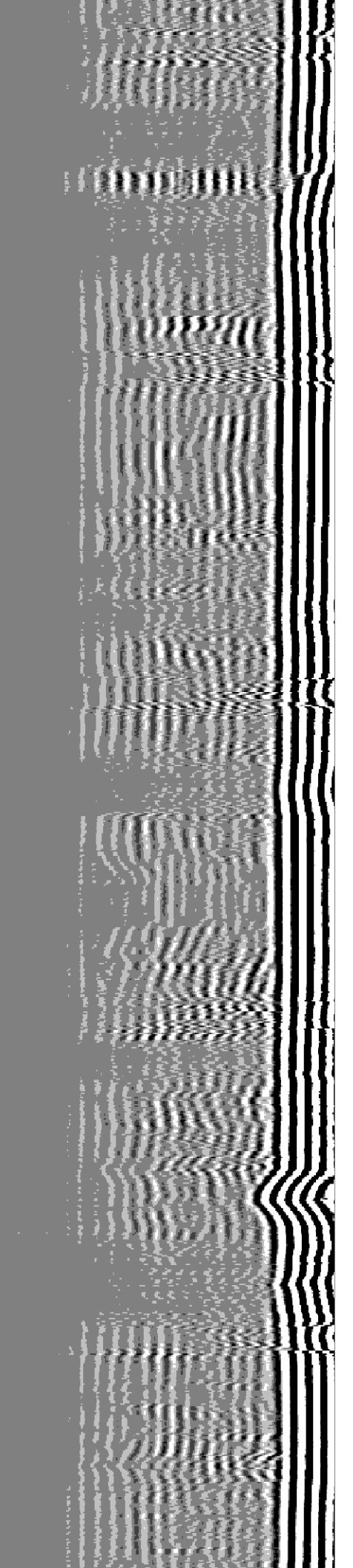
400

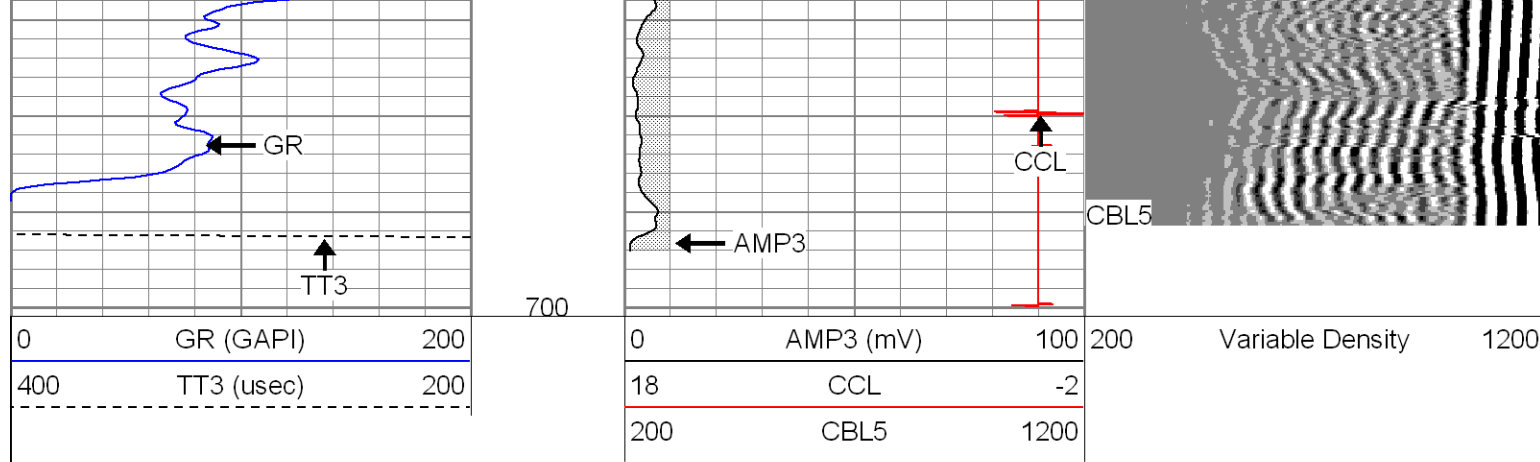


AIR



450  
500  
550  
600  
650





### Cement Bond Log Calibration Report

Serial Number:	Titan5		
Tool Model:	2		
Performed:	Sat Dec 10 15:47:37 2005		
Depth:	2158.27	ft	
Casing Diameter:	5.5	in	
	3' Spacing	5' Spacing	
Signal Zero:	0	0	mV
Calibrated Amplitude:	85	85	mV
Reading at Signal Zero:	-0.02	0	V
Reading in Free Pipe:	1.3	1.24607	V
Gain:	64.3939	68.2145	
Offset:	1.28788	0	

### Gamma Ray Calibration Report

Serial Number:	Titan5	
Tool Model:	T2	
Performed:	Thu Dec 08 09:28:23 2005	
Calibrator Value:	1.0	GAPI
Background Reading:	0.0	cps
Calibrator Reading:	1.0	cps
Sensitivity:	1.3000	GAPI/cps