



CEMENT BOND GAMMA RAY COLLAR CORRELATION LOG

Company K. P. KAUFFMAN Well SUNMARKE 15-28 Field WATTENBERG County WELD State COLORADO	Company		K. P. KAUFFMAN	
	Well		SUNMARKE 15-28	
	Field		WATTENBERG	
	County		WELD	State COLORADO
	Location:		API #: 05-123-24646-00	
		SE/SW		Other Services
		958' FSL & 1370' FWL		PERF
		SEC 28 TWP 4N RGE 67W		Elevation
		Permanent Datum GROUND LEVEL Elevation 4970		K.B. 4982
		Log Measured From KELLY BUSHING		D.F. 4981
		Drilling Measured From KELLY BUSHING		G.L. 4970
Date		13-FEB-2008		
Run Number		ONE		
Depth Driller		7962		
Depth Logger		7903		
Bottom Logged Interval		7902		
Top Log Interval		3350		
Open Hole Size		7 7/8		
Type Fluid		WATER		
Density / Viscosity		---		
Max. Recorded Temp.		253 F		
Estimated Cement Top		3545		
Time Well Ready		---		
Time Logger on Bottom		---		
Equipment Number		2337/CR29/20		
Location		BRIGHTON		
Recorded By		JACKSON		
Witnessed By		MR. RICK OHLEMEIER		
Borehole Record				Tubing Record
Run Number	Bit	From	To	Size
				Weight
				From
				To
Casing Record		Size	Wgt/Ft	Top
Surface String				Bottom
Prot. String				
Production String		4 1/2	11.6	SURFACE
Liner				TOTAL DEPTH

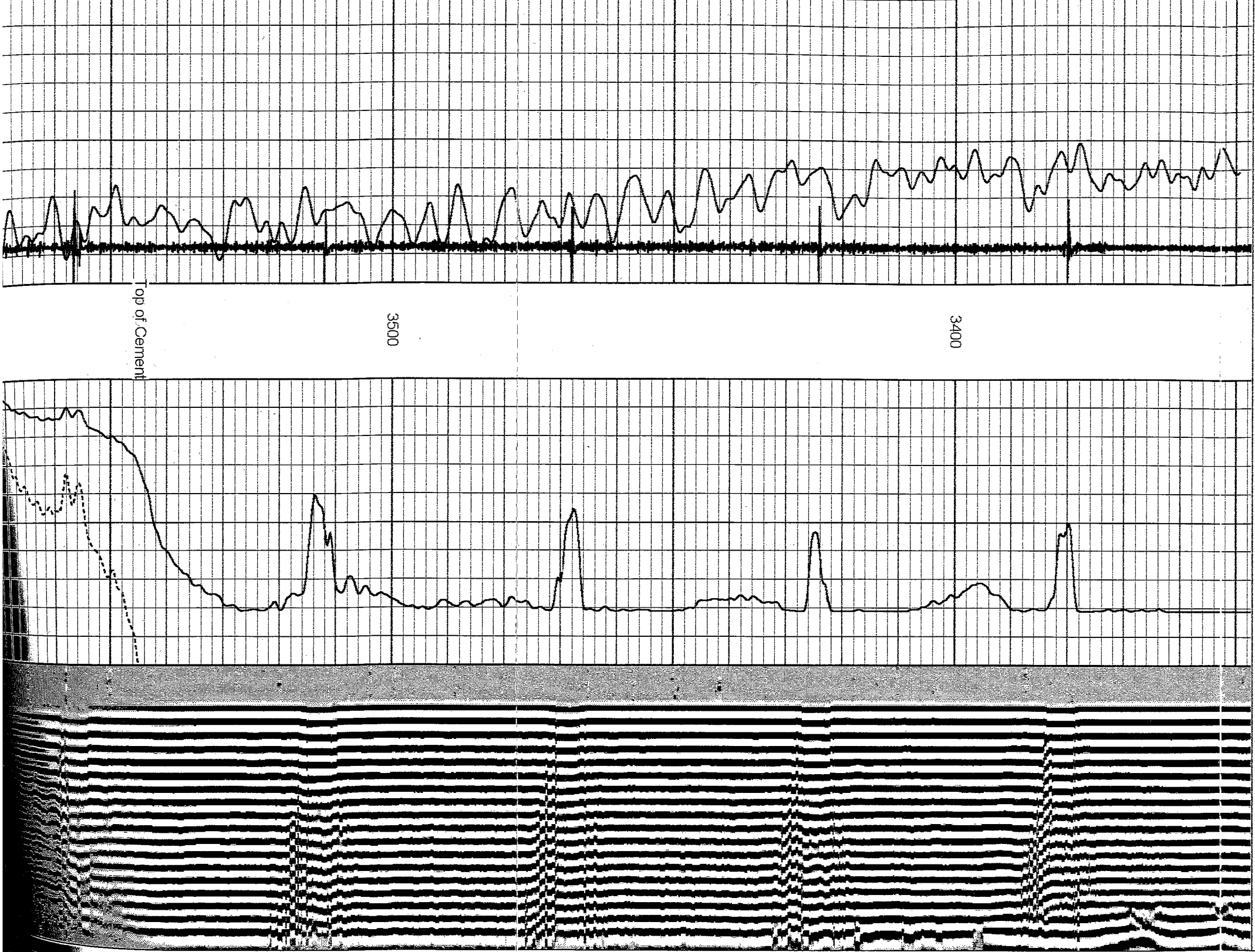
All interpretations are opinions based on inferences from electrical or other measurements and we cannot and do not guarantee the accuracy or correctness of any interpretation, and we shall not, except in the case of gross or willful negligence on our part, be liable or responsible for any loss, costs, damages, or expenses incurred or sustained by anyone resulting from any interpretation made by any of our officers, agents or employees. These interpretations are also subject to our general terms and conditions set out in our current Price Schedule.

Comments

LOG CORRELATED TO CDNDIL DATED 26-DEC-2007

Database File: summarker1528chl.db
Dataset Pathname: pass2
Presentation Format: sch_dr
Dataset Creation: Wed Feb 13 09:30:28 2008 by Log Std Casedhole 07051
Charted by: Depth in Feet scaled 1:240

7	Collar Locator	-1	0	Amplified Amplitude (mV)	30	200	Variable Density	1200
30	Gamma Ray (GAPI)	150	0	3' Amplitude (mV)	100			



BOND RAY ATION LOG

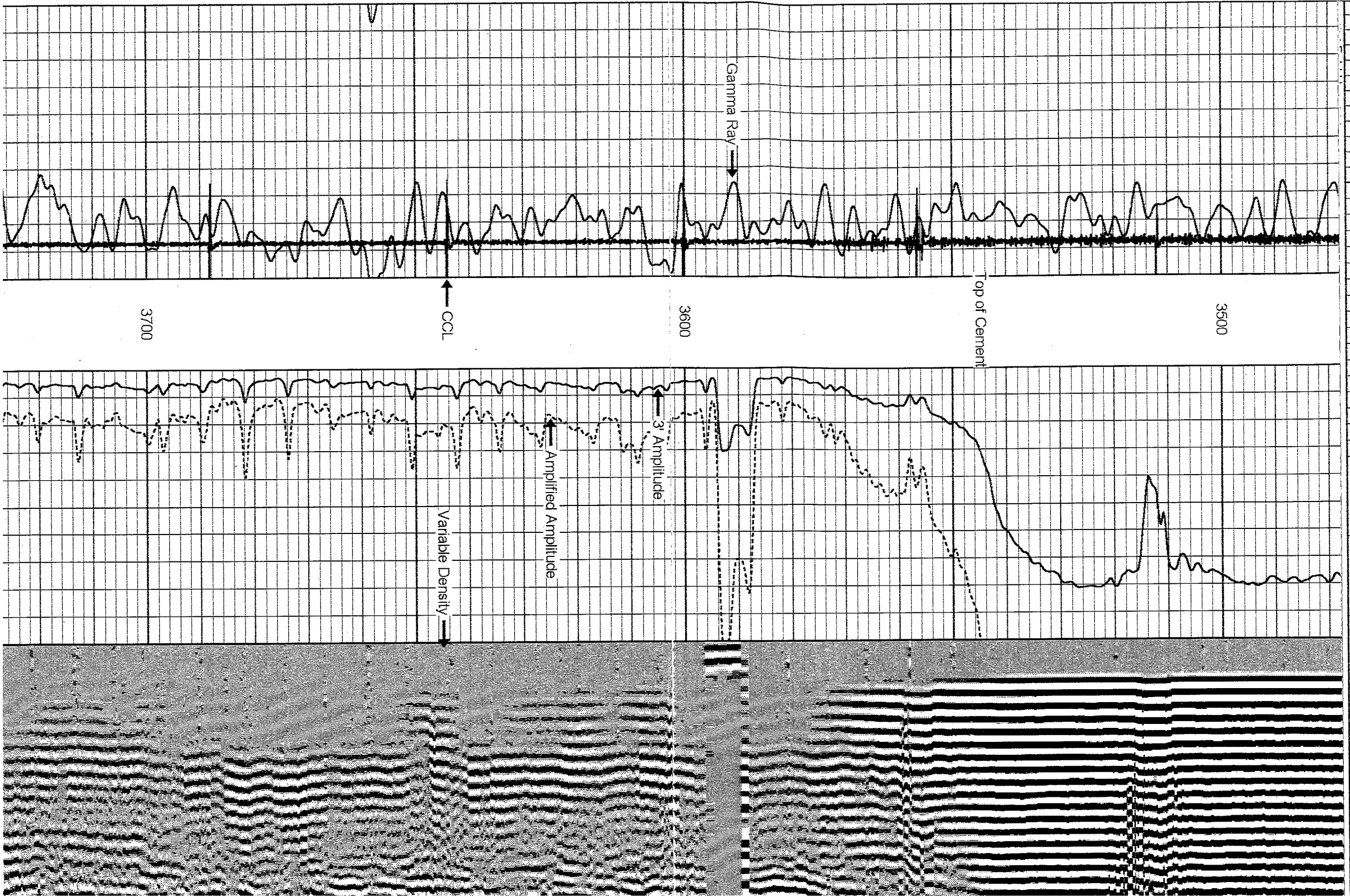
00
Other Services
PERF
Elevation
K.B. 4982
D.F. 4981
G.L. 4970

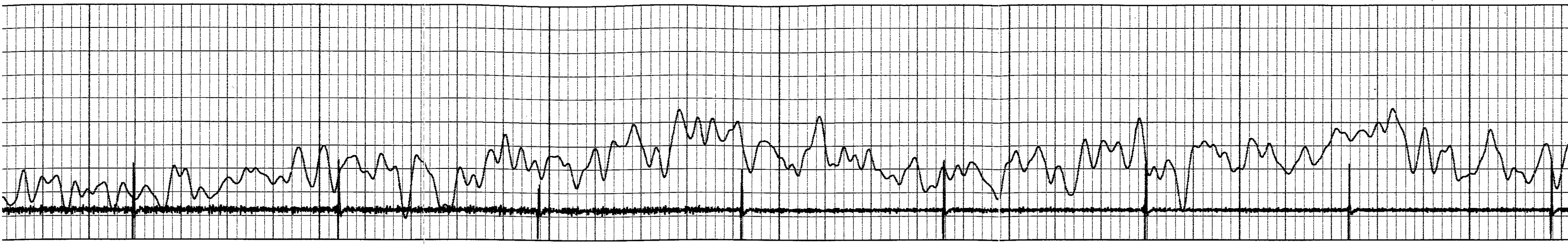
COLORADO

Record
From
To

Bottom

TOTAL DEPTH

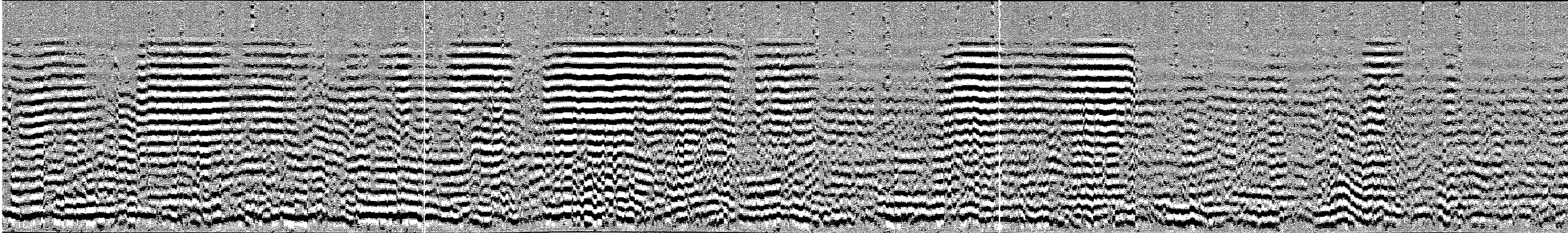
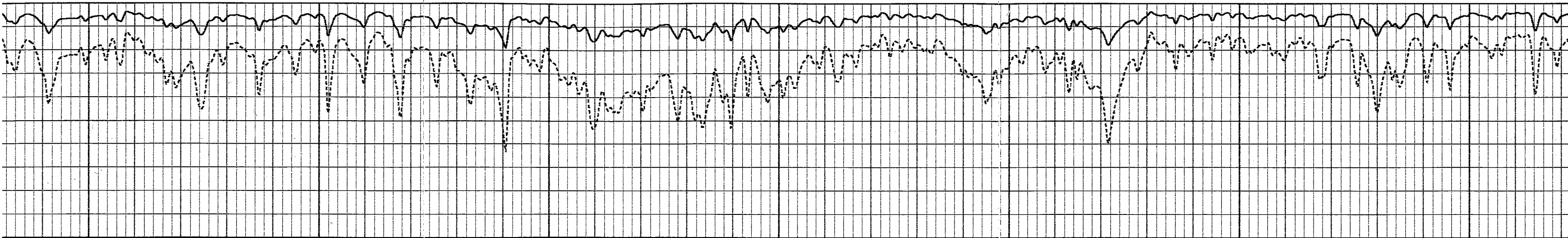


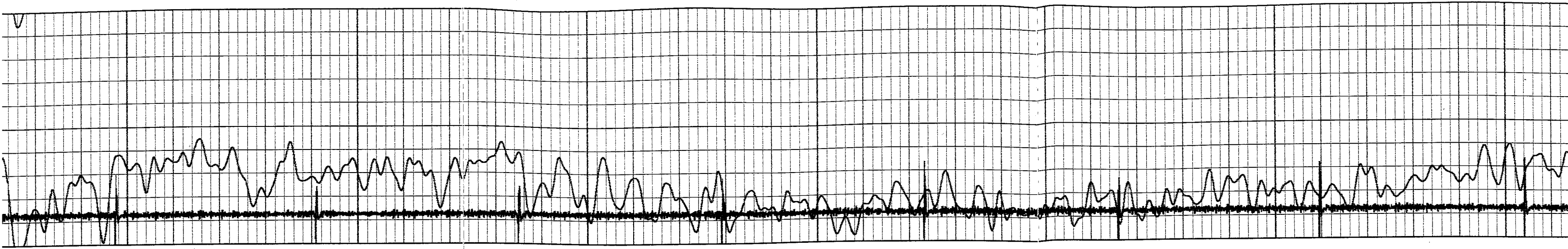


4000

3900

3800



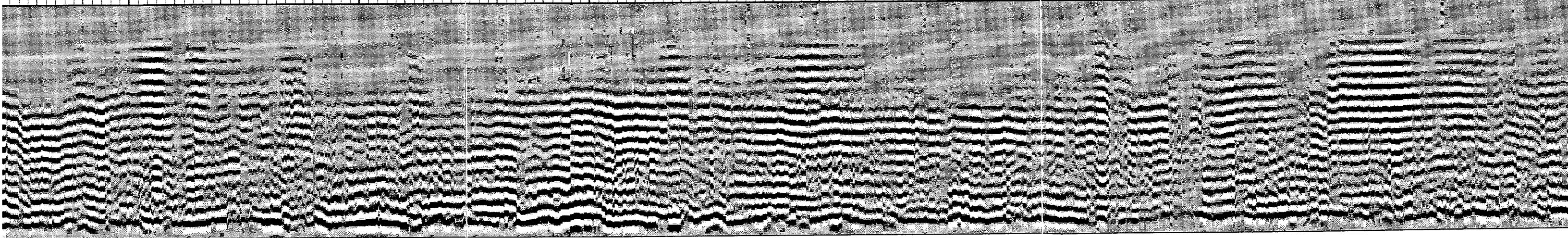
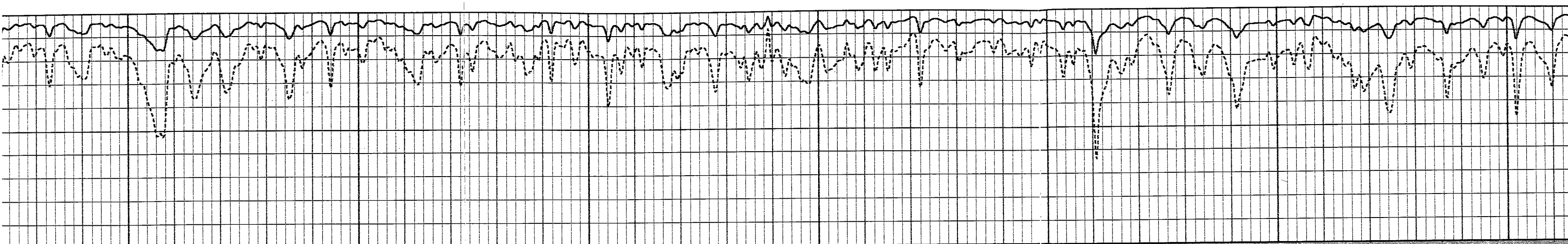


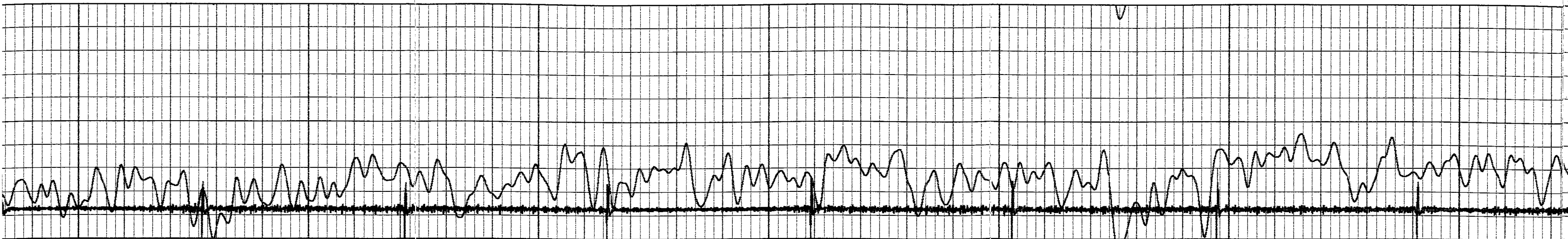
4300

4200

4100

4000

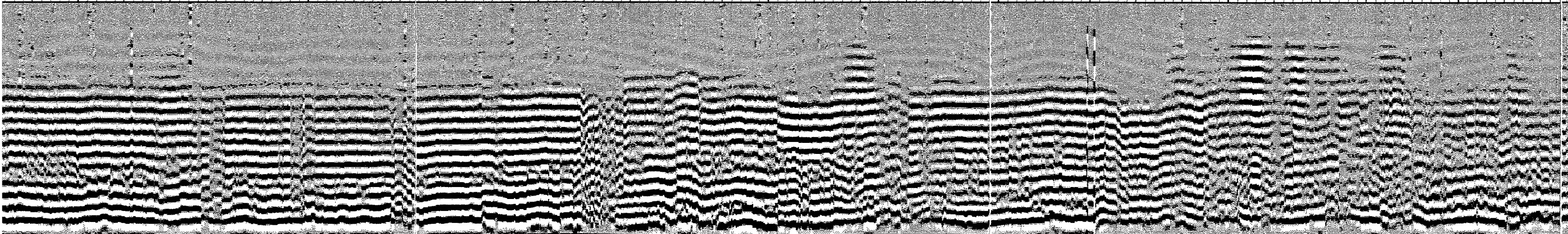
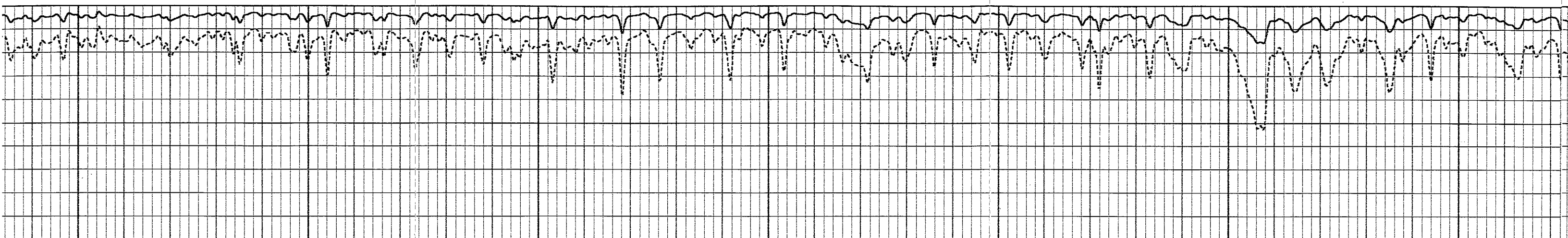


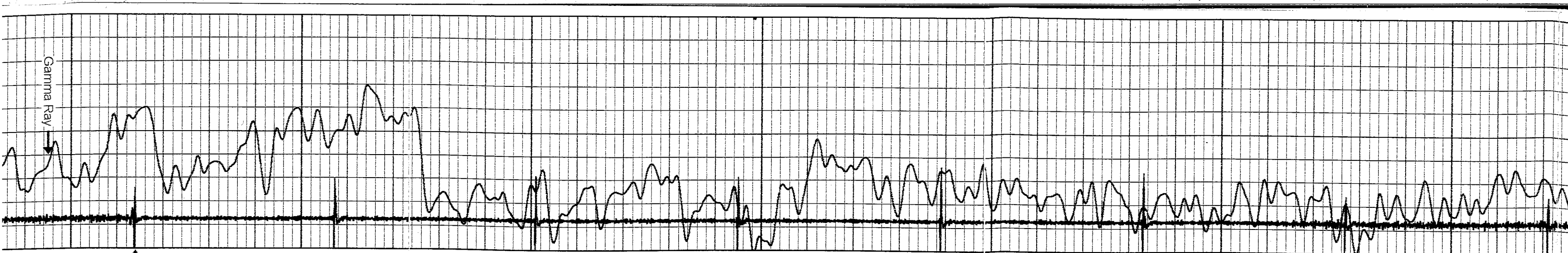


4500

4400

4300





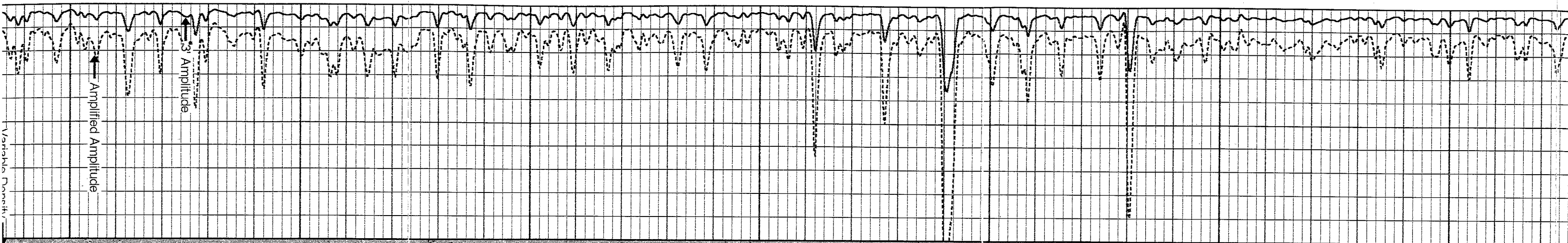
4800

CCL

4700

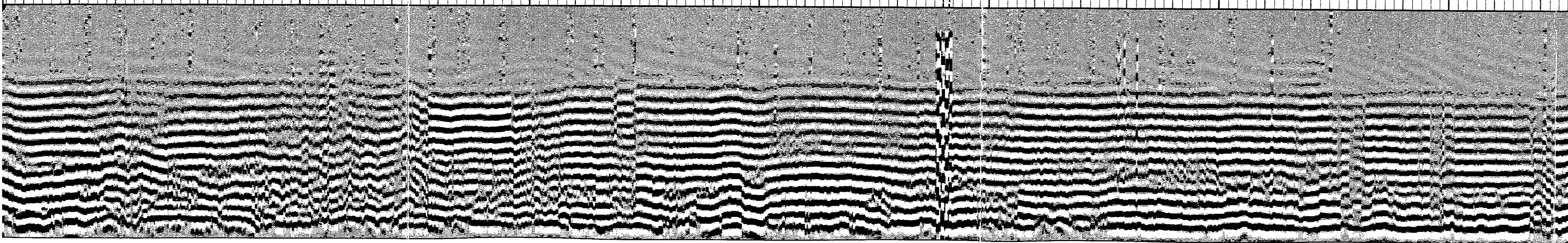
4600

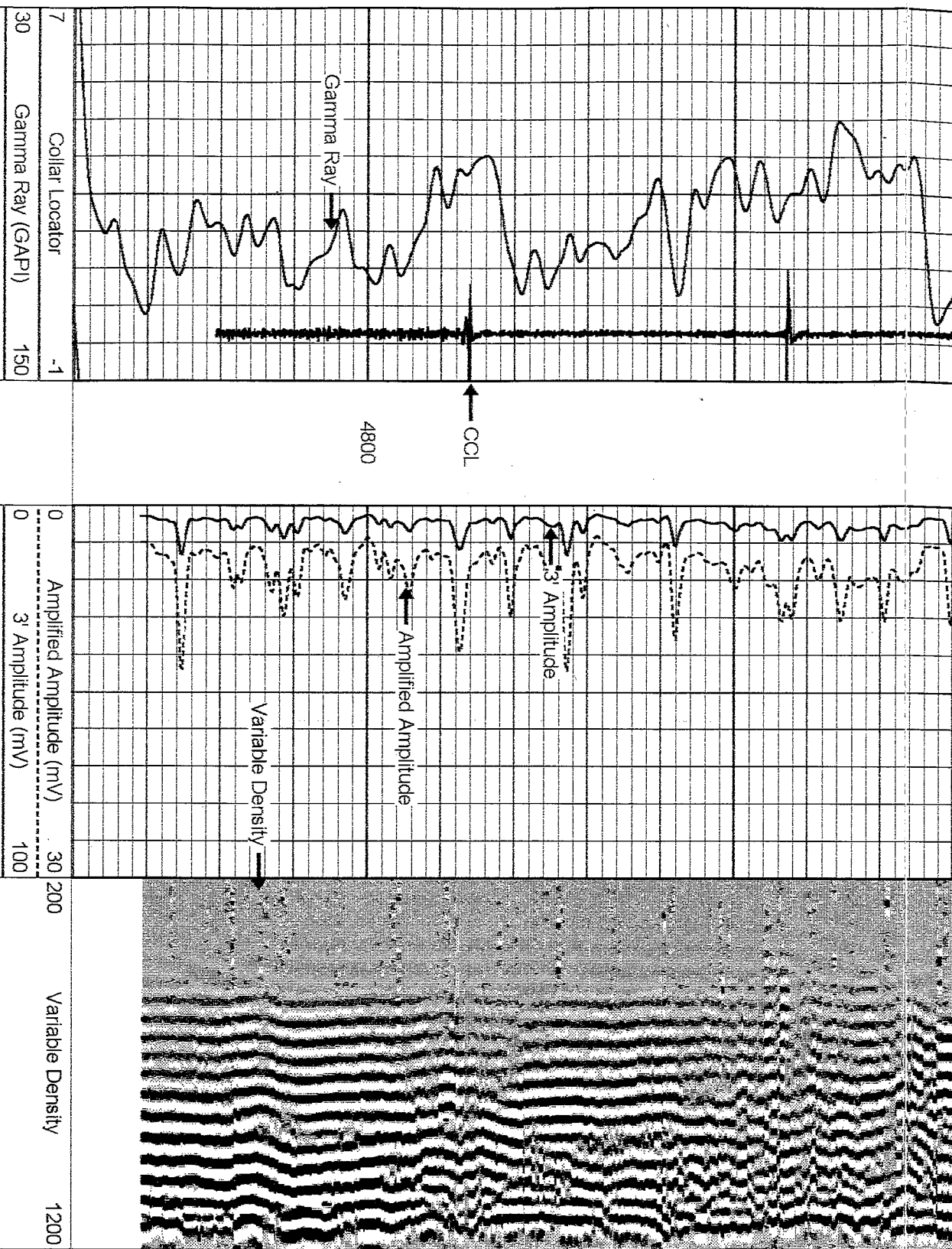
4500



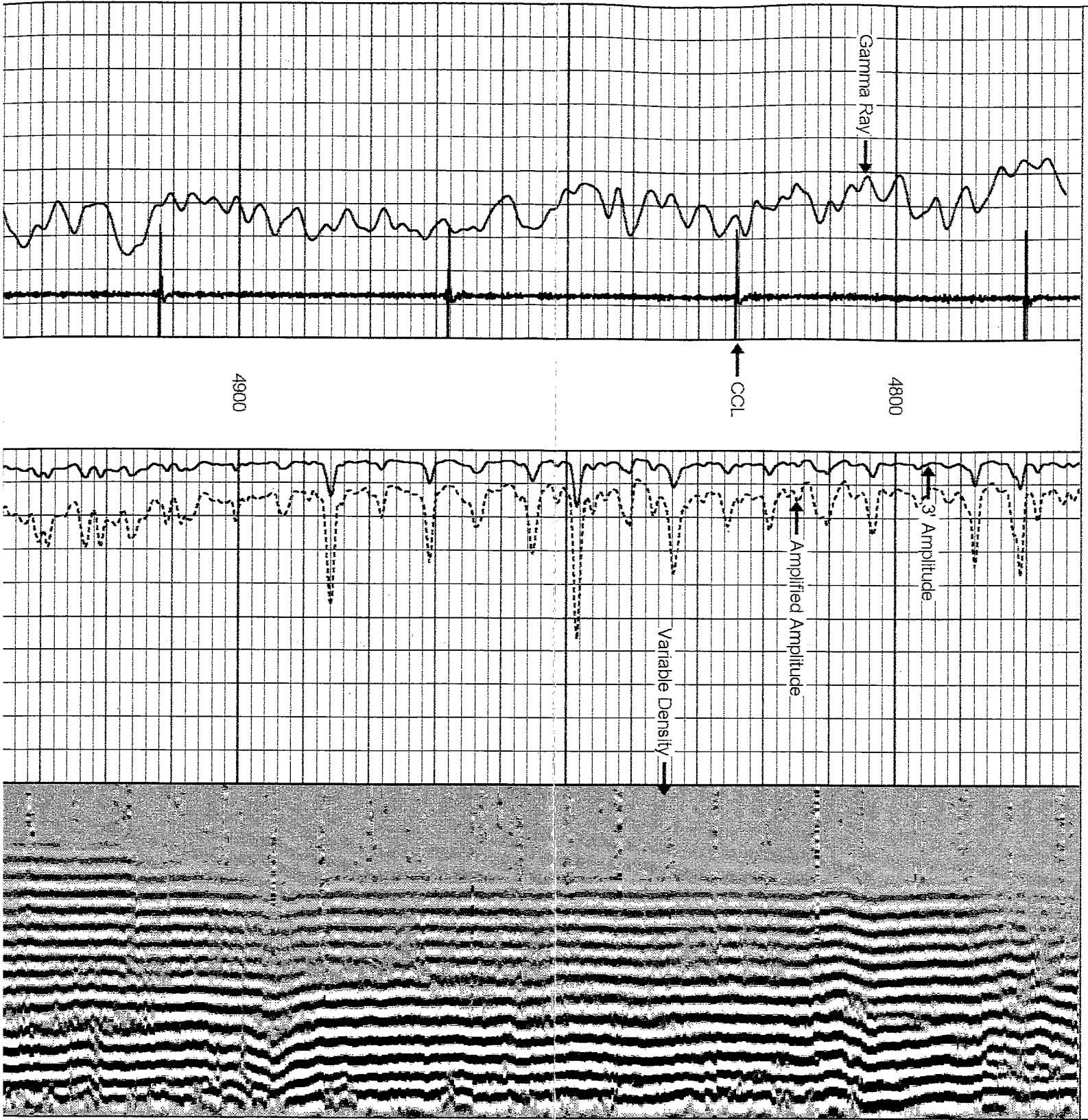
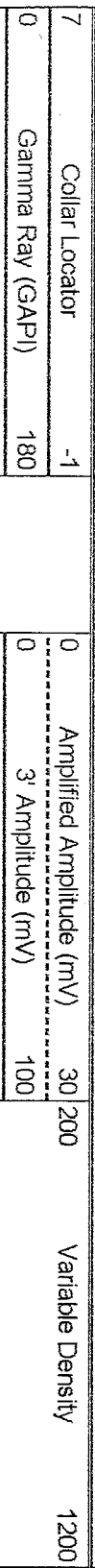
Amplified Amplitude

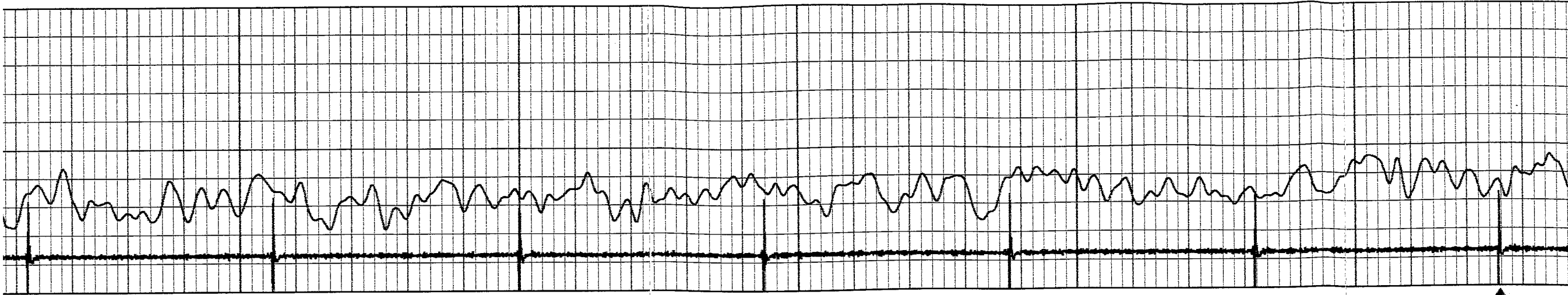
3 Amplitude





Database File: summarker1528cbl.db
Dataset Pathname: pass1
Presentation Format: scbl_cfr
Dataset Creation: Wed Feb 13 08:40:59 2008 by Log Std Casedhole 07051
Charted by: Depth in Feet scaled 1:240

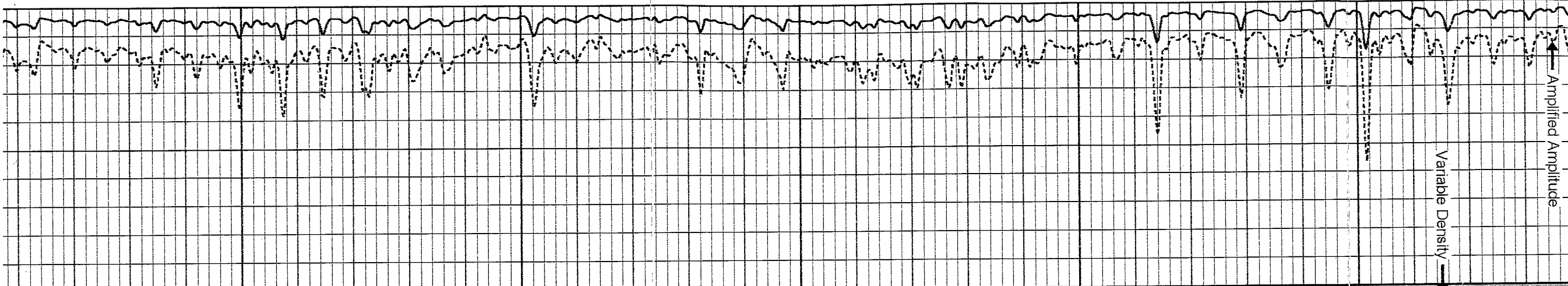




5000

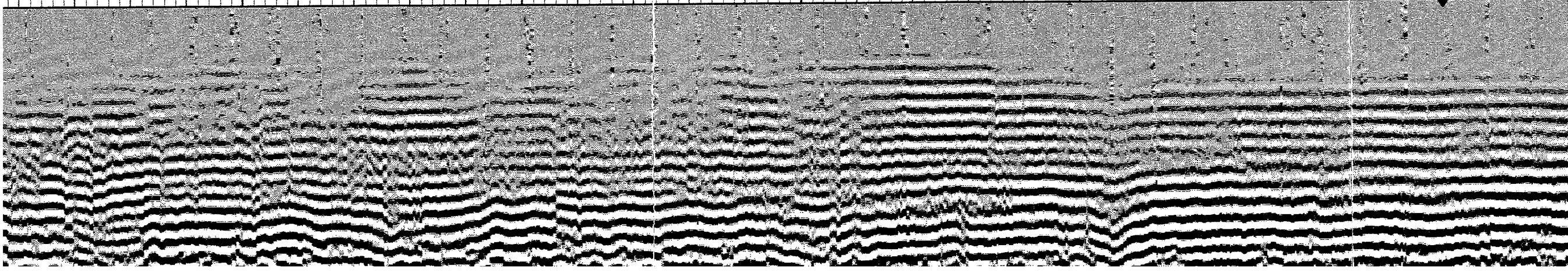
4900

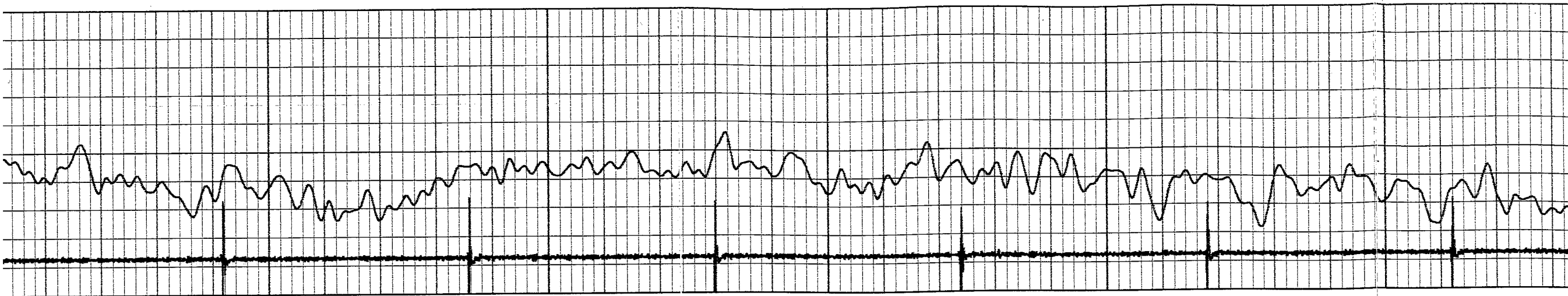
CCl



Amplified Amplitude

Variable Density

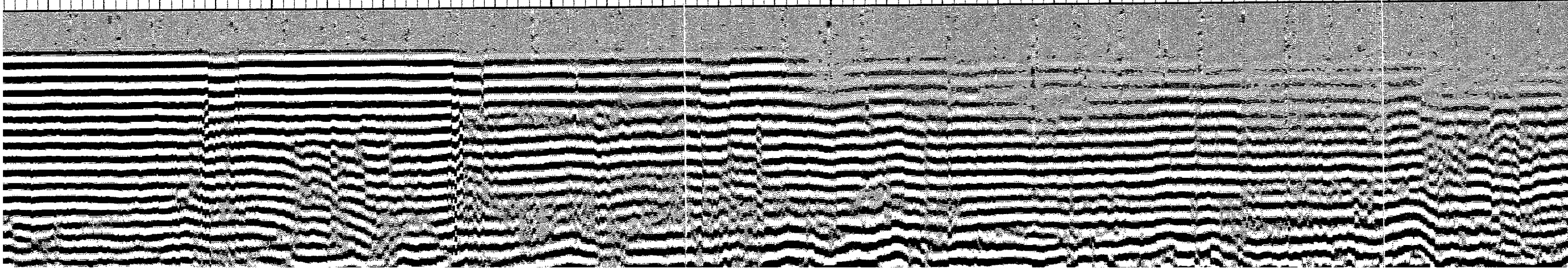
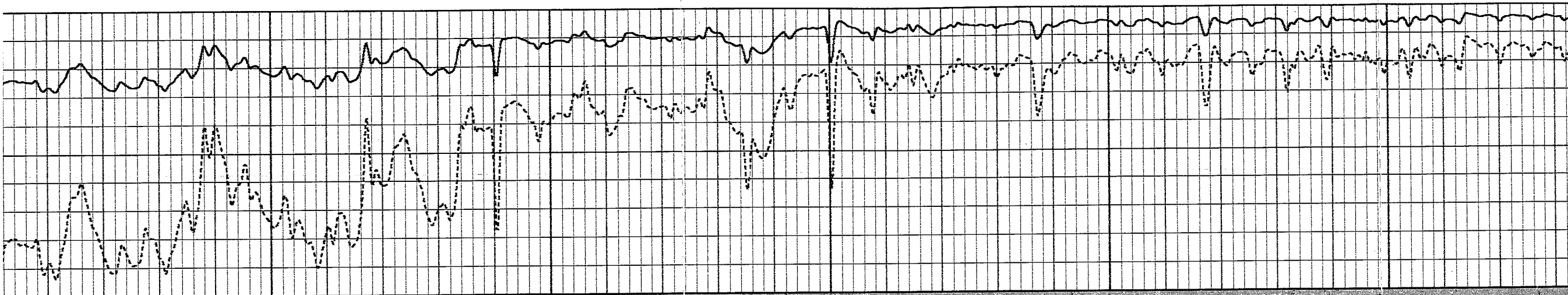


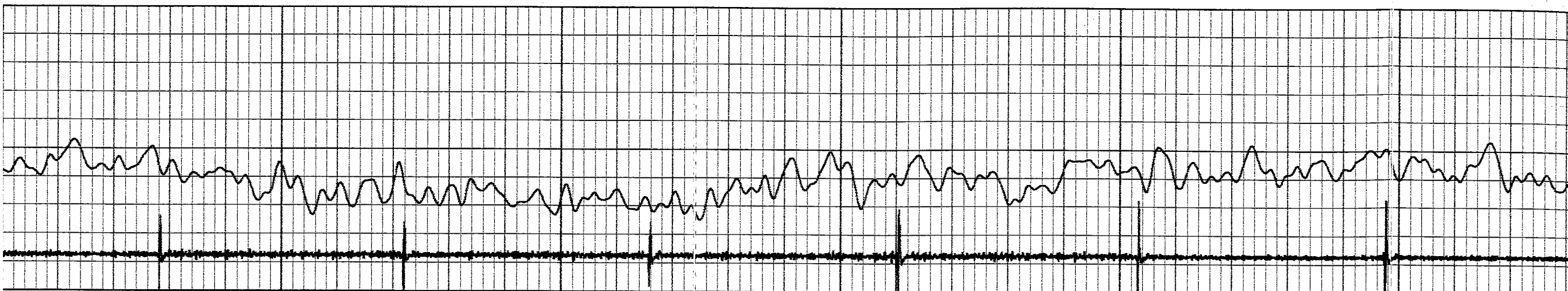


5300

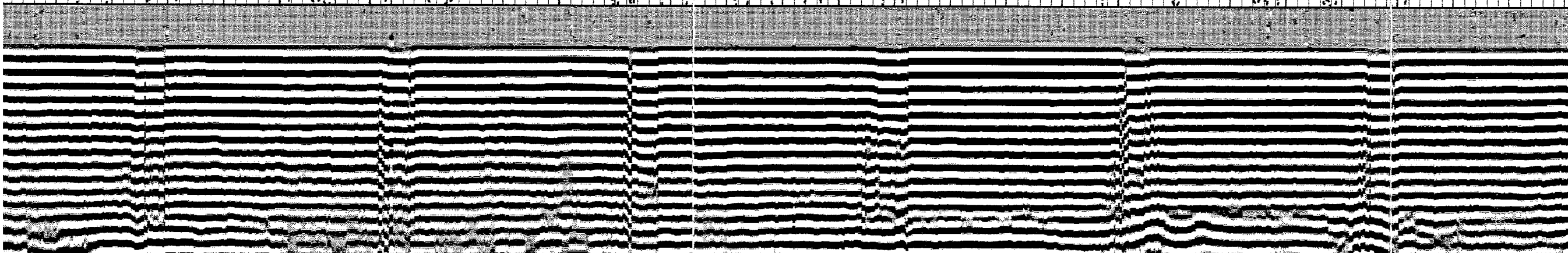
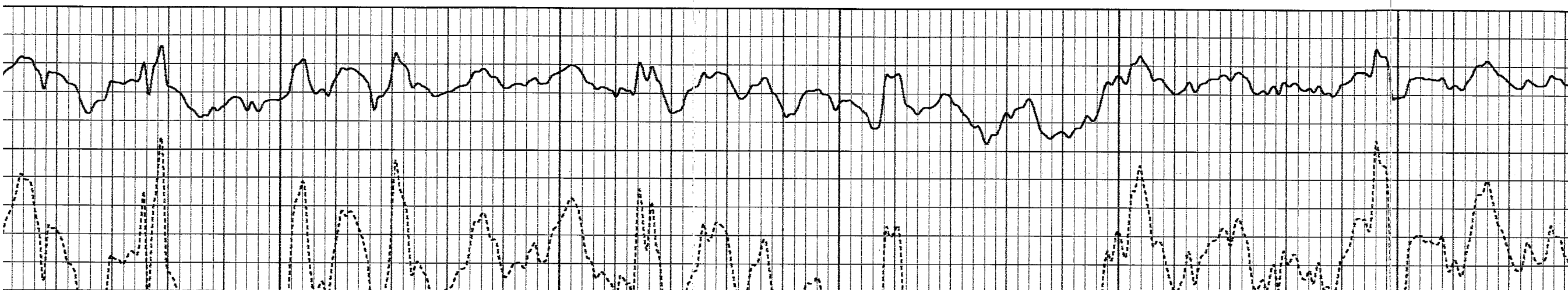
5200

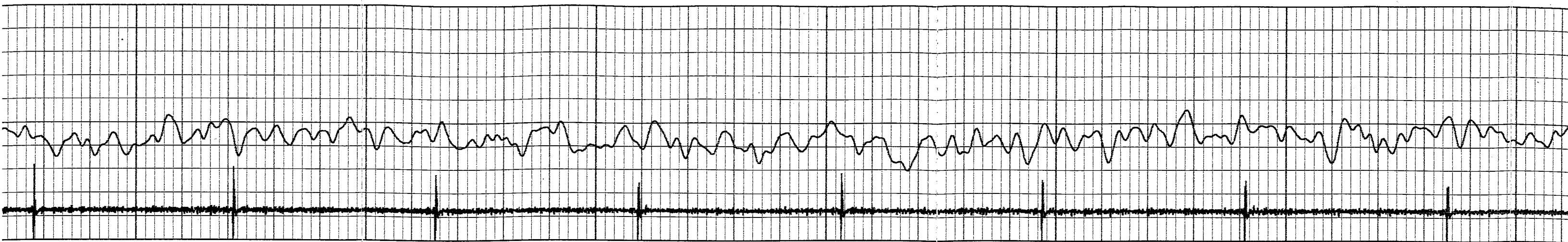
5100





5400 5500



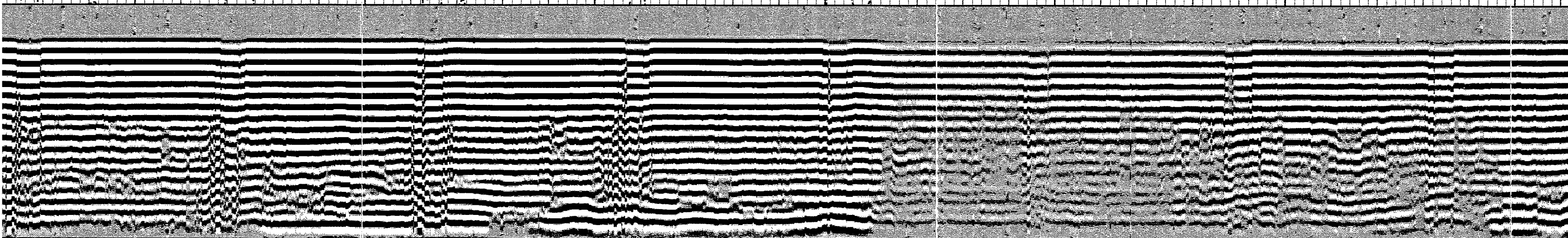
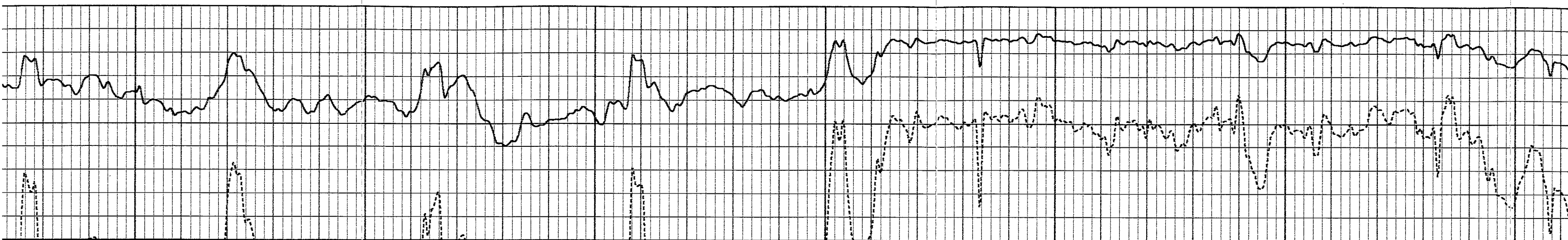


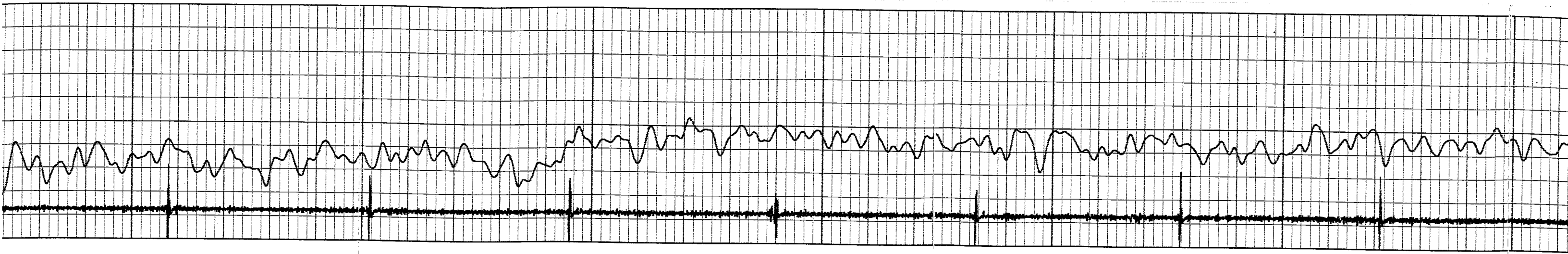
5900

5800

5700

5600

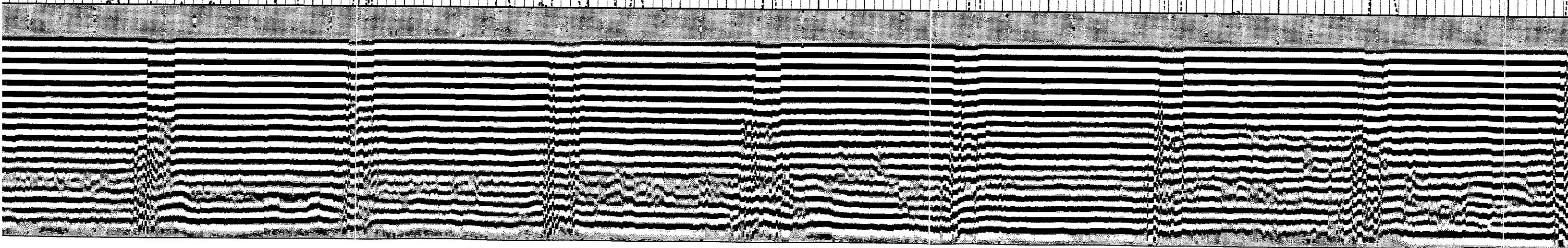
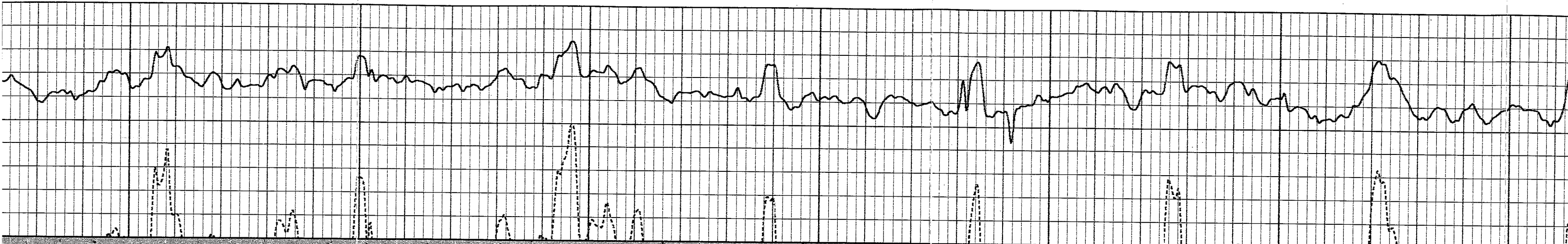




6100

6000

5900



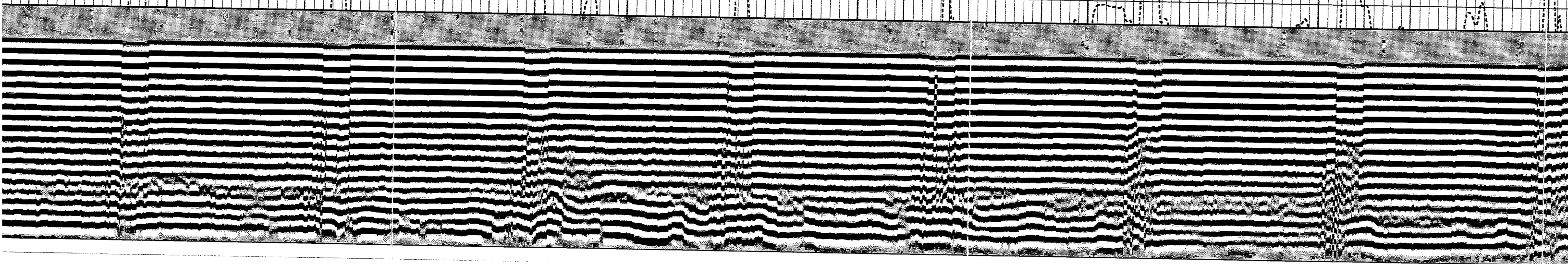
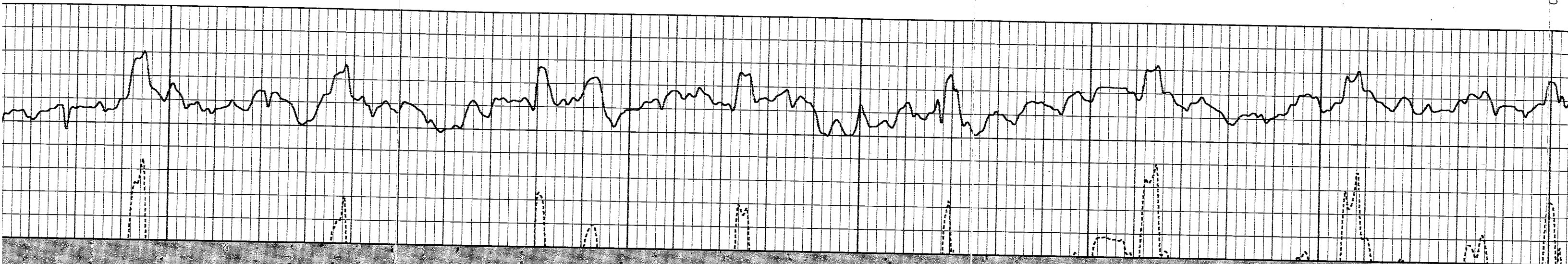


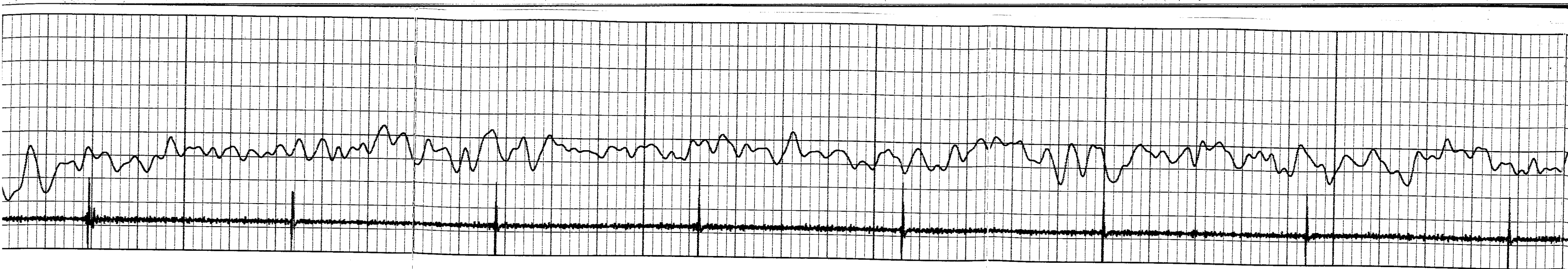
6400

6300

6200

6100

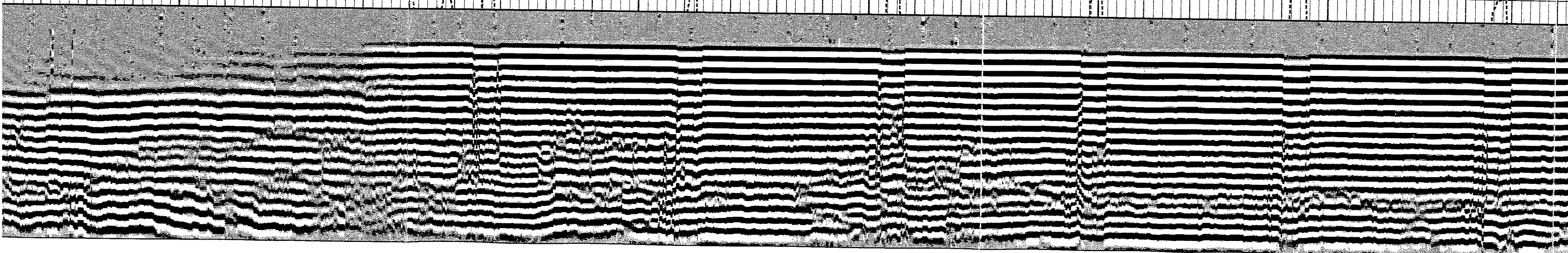
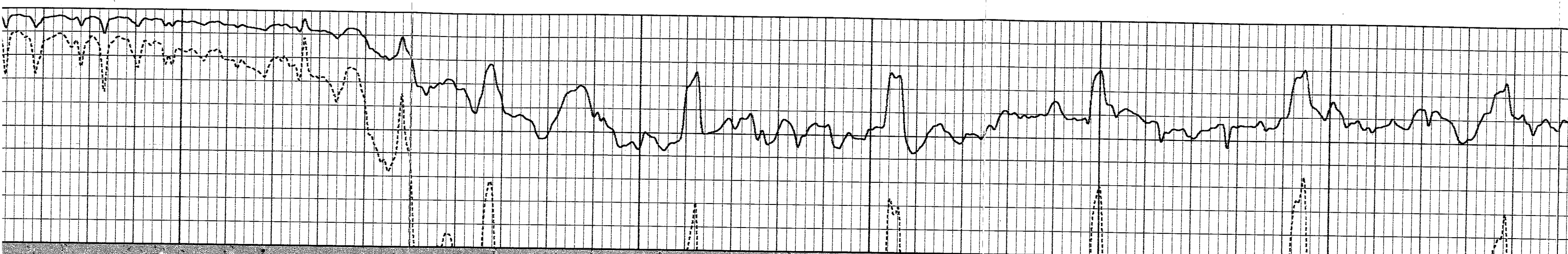


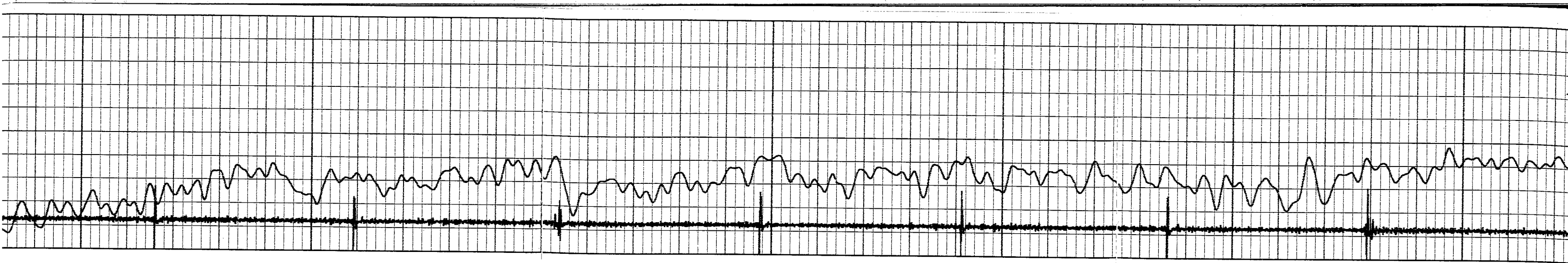


6600

6500

6400

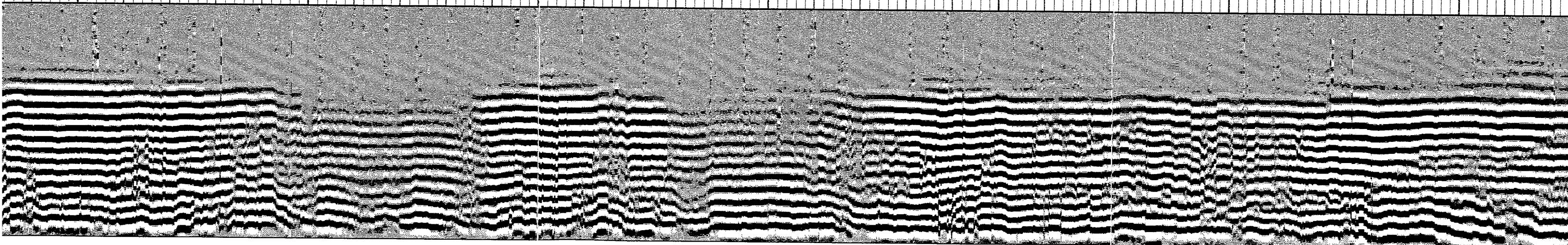
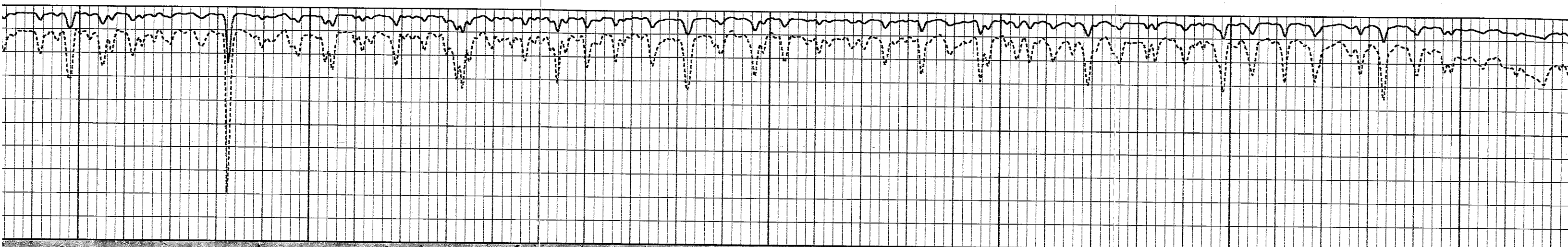


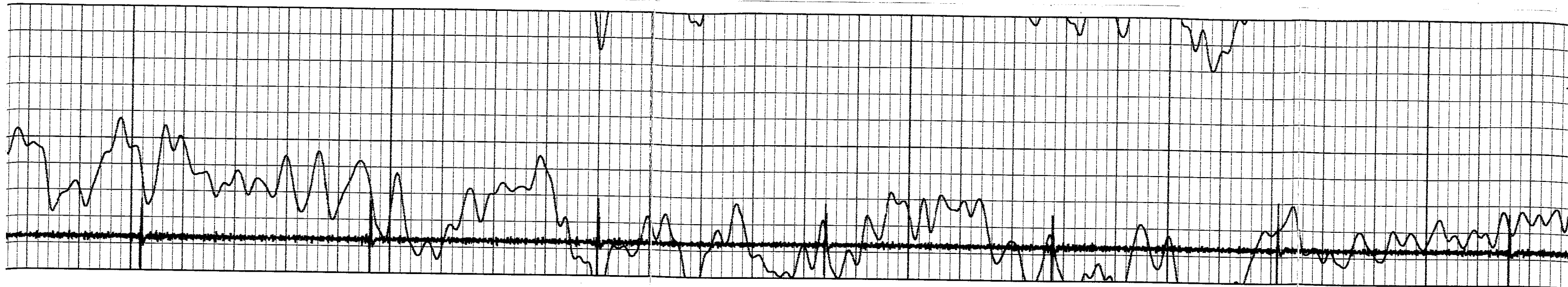


6900

6800

6700

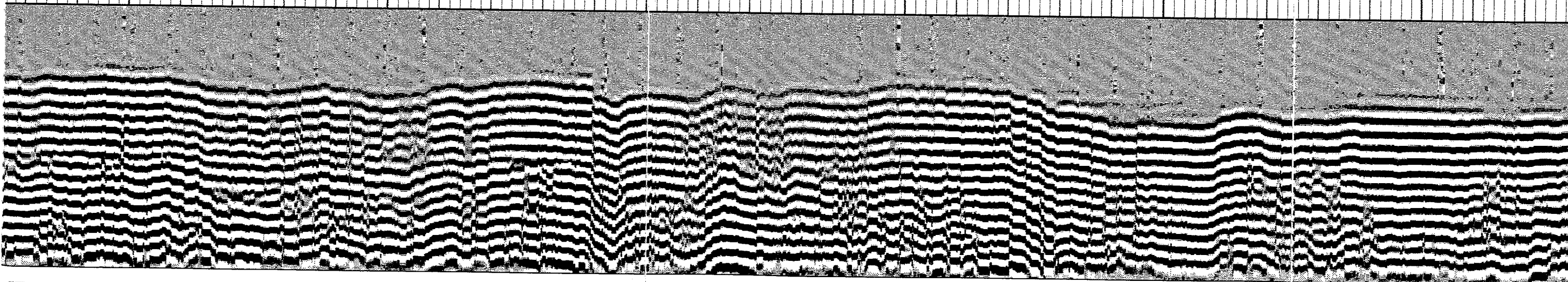
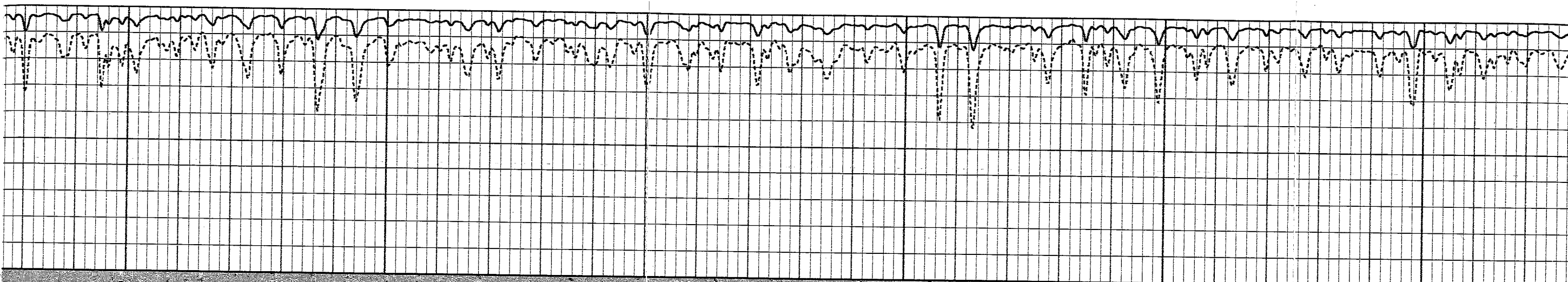


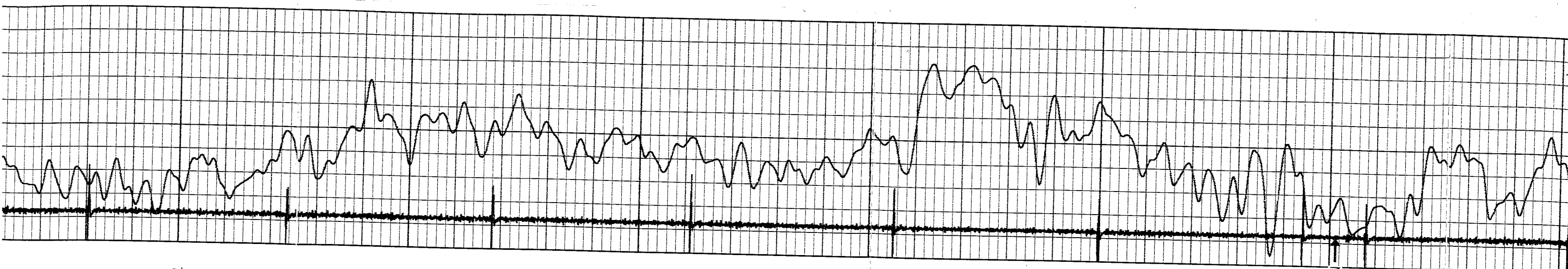


7200

7100

7000





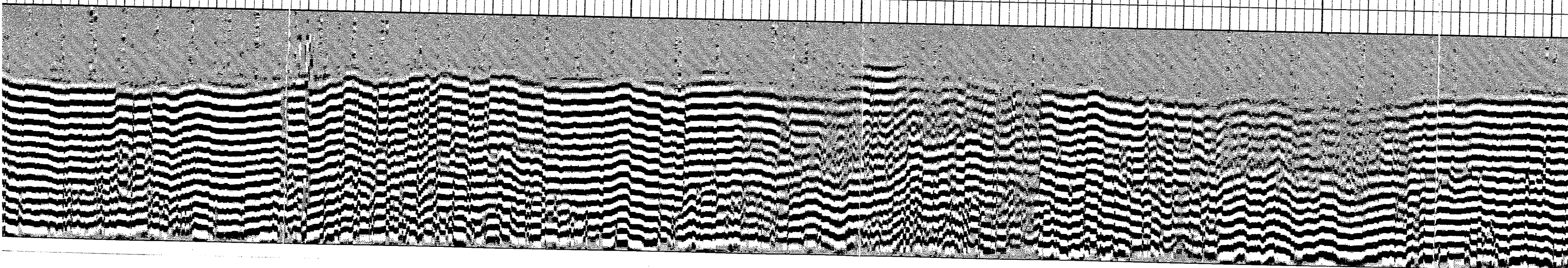
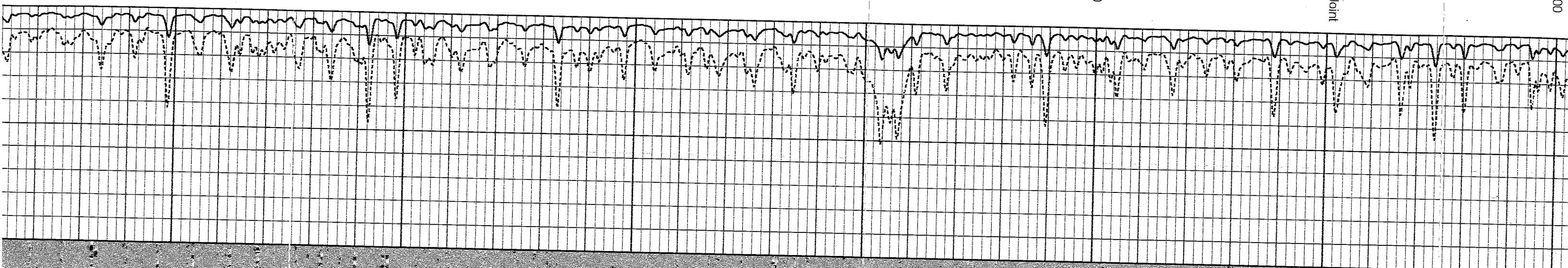
7500

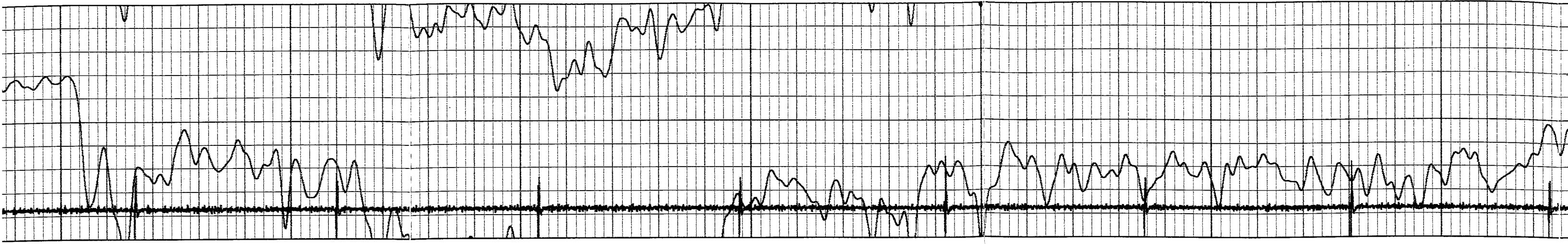
7400

7300

Marker Joint

7200





7800

7700

7600

7500

