



SUPERIOR
Black Lick, Pa.
Mercer, Pa.
Wooster, Oh.
Cleveland, Ok.
Trinidad, Co.

CEMENT BOND GAMMA RAY

Company Pioneer Natural Resources
Well Patti C 31-33
Field Purgatorie River
County Las Animas
State CO

Company Pioneer Natural Resources
Well Patti C 31-33
Field Purgatorie River
County Las Animas
State CO

Location: API #: 05 071 08950 00

594' FNL & 2079' FEL

SEC 33 TWP 32S RGE 67W

Permanent Datum Ground Level Elevation 7582'
Log Measured From Kelly Bushing 4' Above G.L.
Drilling Measured From Kelly Bushing

Elevation
K.B. 7586'
D.F. -----
G.L. 7582'

Date 5/21/07

Run Number three

Depth Driller 2565'

Depth Logger 2526'

Bottom Logged Interval 2522'

Top Log Interval Surf.

Open Hole Size 7 7/8"

Type Fluid water

Density / Viscosity ///

Max. Recorded Temp. 124F

Estimated Cement Top 788'

Time Well Ready ROA

Time Logger on Bottom 12:10

Equipment Number 0703

Location Trinidad

Recorded By Worley

Witnessed By

Run Number

Bit From To

Size Weight From To

Casing Record Size Wgt/Ft Top Bottom

Surface String 8 5/8" 00 608'

Prot. String

Production String 5 1/2" 00 NA

Liner

<<< Fold Here >>>

All interpretations are opinions based on inferences from electrical or other measurements and we cannot and do not guarantee the accuracy or correctness of any interpretation, and we shall not, except in the case of gross or willful negligence on our part, be liable or responsible for any loss, costs, damages, or expenses incurred or sustained by anyone resulting from any interpretation made by any of our officers, agents or employees. These interpretations are also subject to our general terms and conditions set out in our current Price Schedule.

Comments

Wet Canyon first left just before Sarcillo turn off (toward Buggy Whip), first right to location.



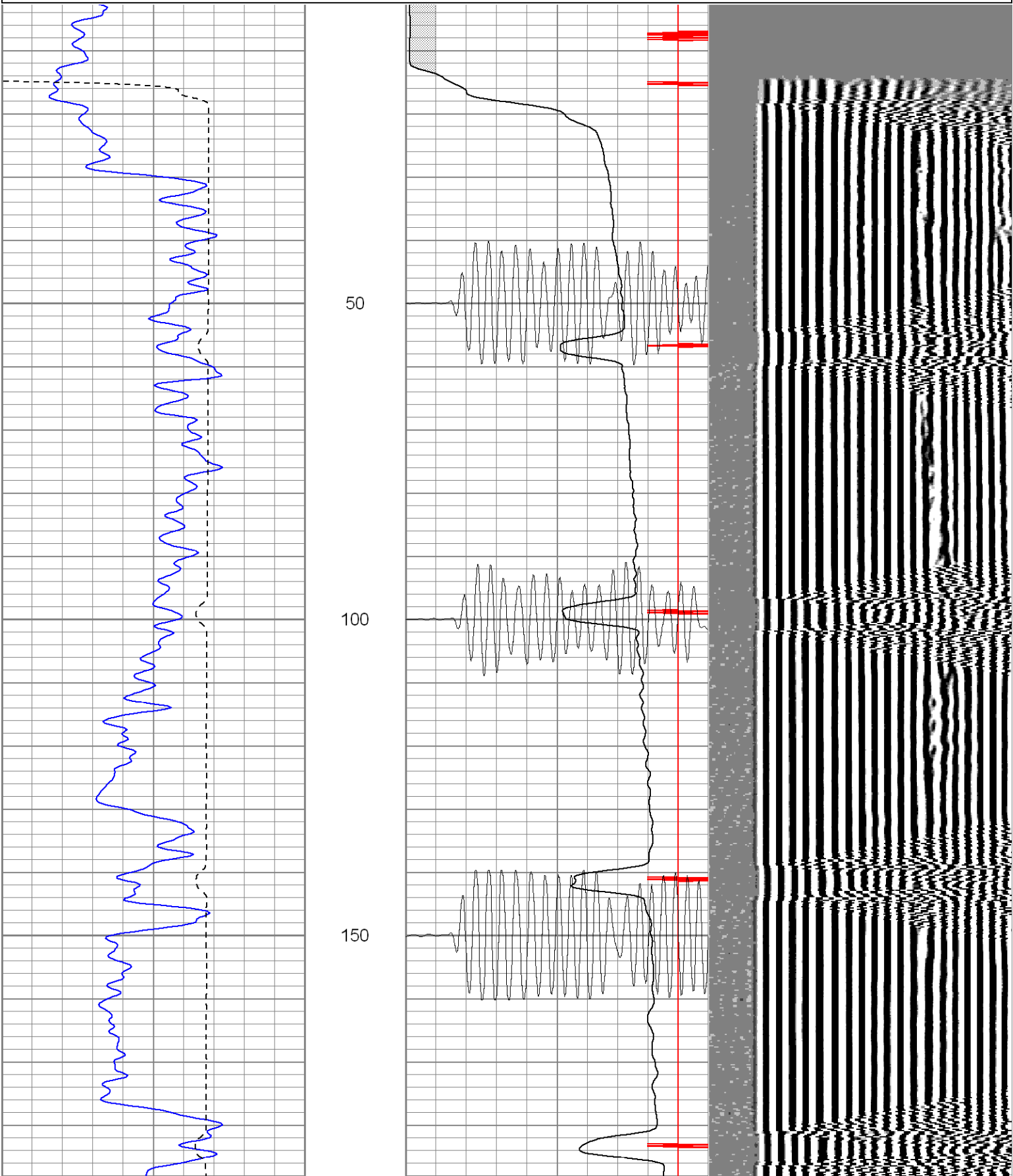
SUPERIOR

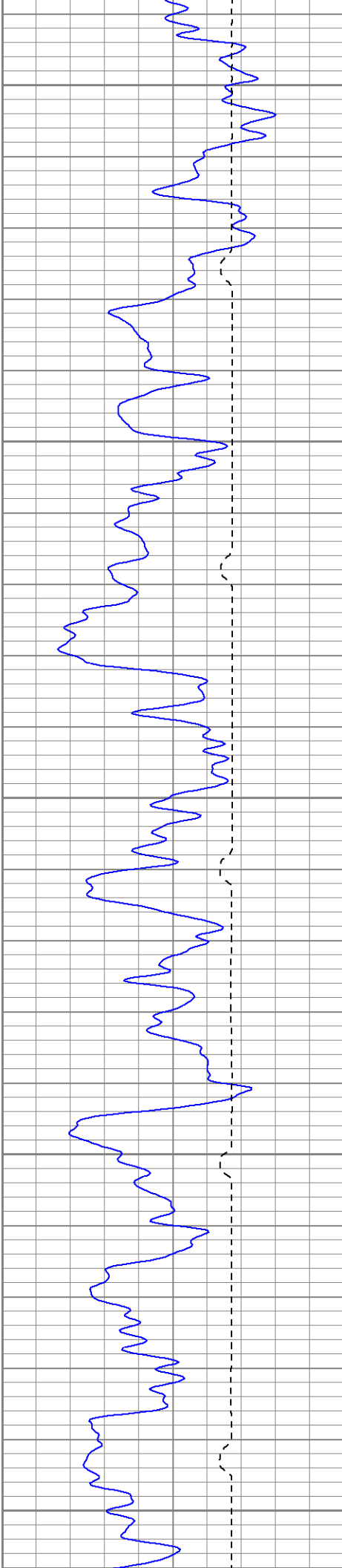
Black Lick, Pa.
Mercer, Pa.
Wooster, Oh.
Cleveland, Ok.
Trinidad, Co.

Main Pass

Database File: patic52107b.db
Dataset Pathname: pass2
Presentation Format: cblrt
Dataset Creation: Mon May 21 12:17:52 2007 by Log Warrior 7.0 STD Cas
Charted by: Depth in Feet scaled 1:240

0	GR (GAPI)	200	0	AMP3 (mV)	100	200	Variable Density	1200
400	TT3 (usec)	200	18	CCL	-2			
			200	CBL5	1200			





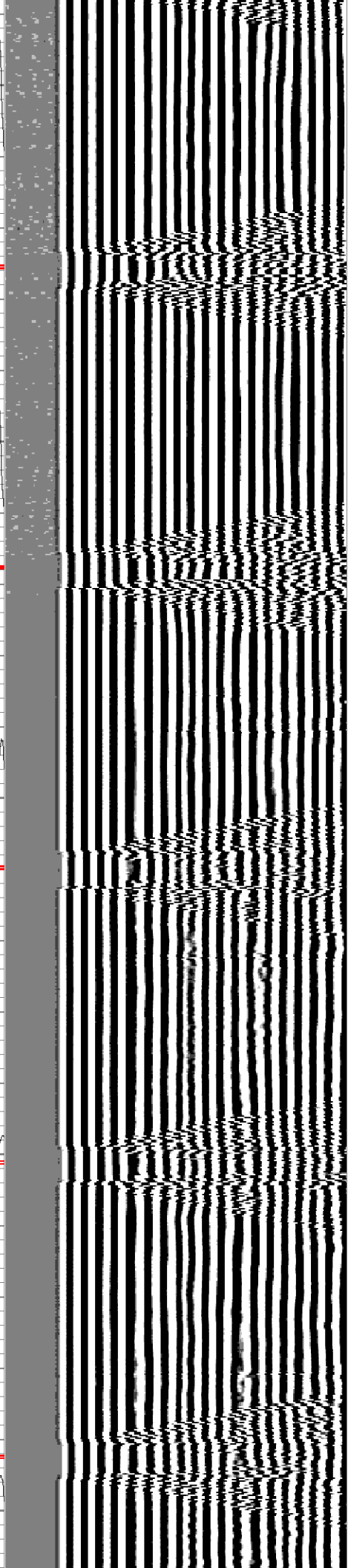
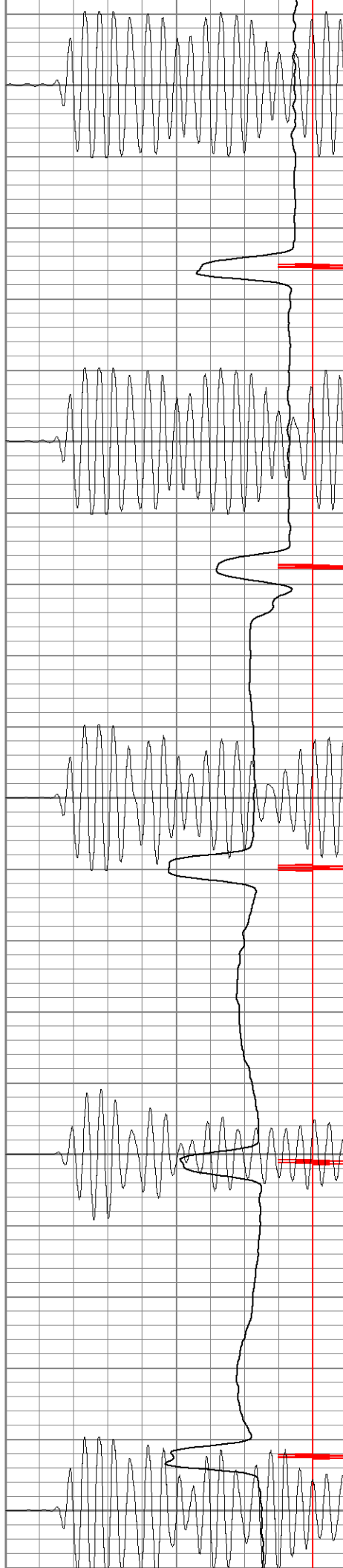
200

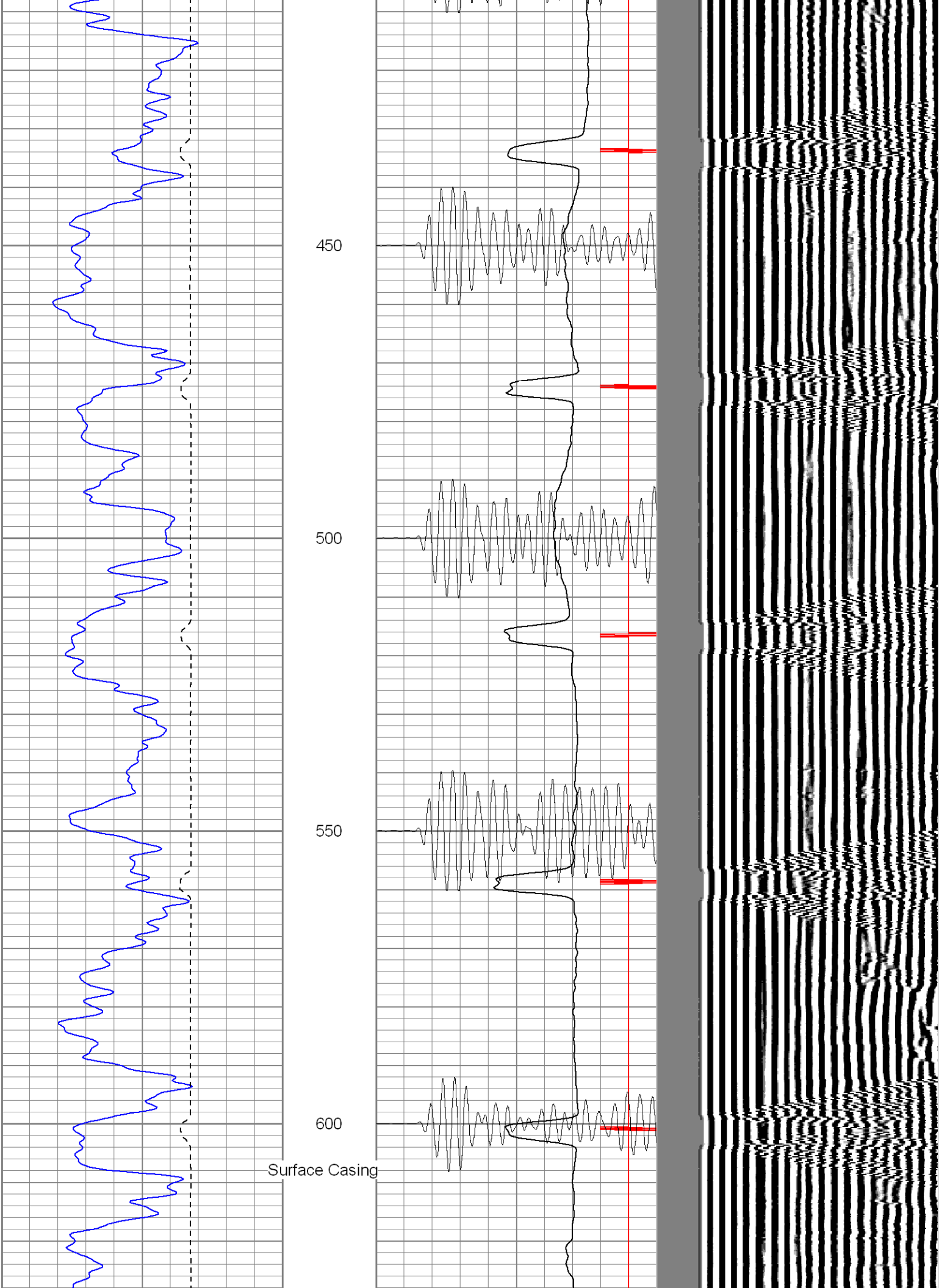
250

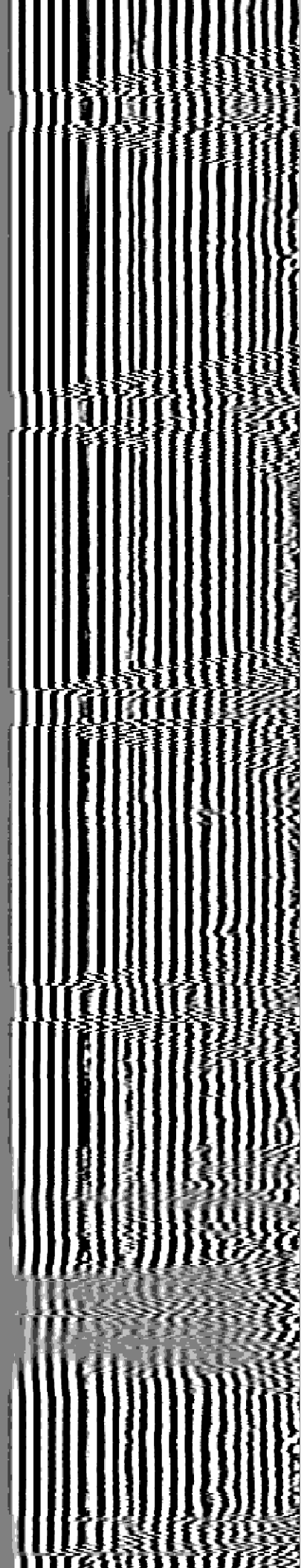
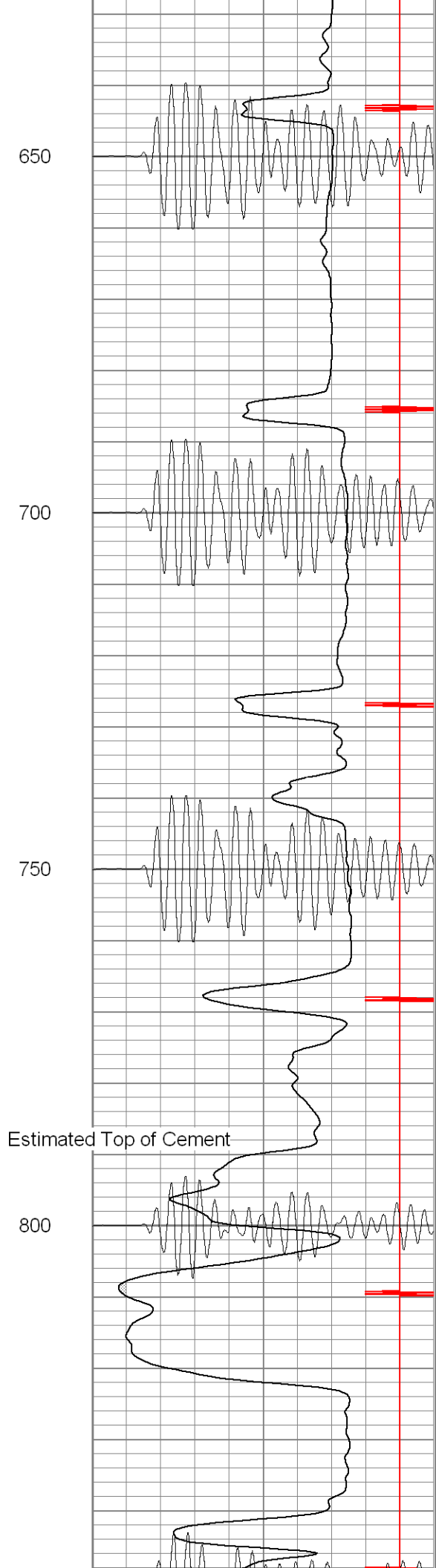
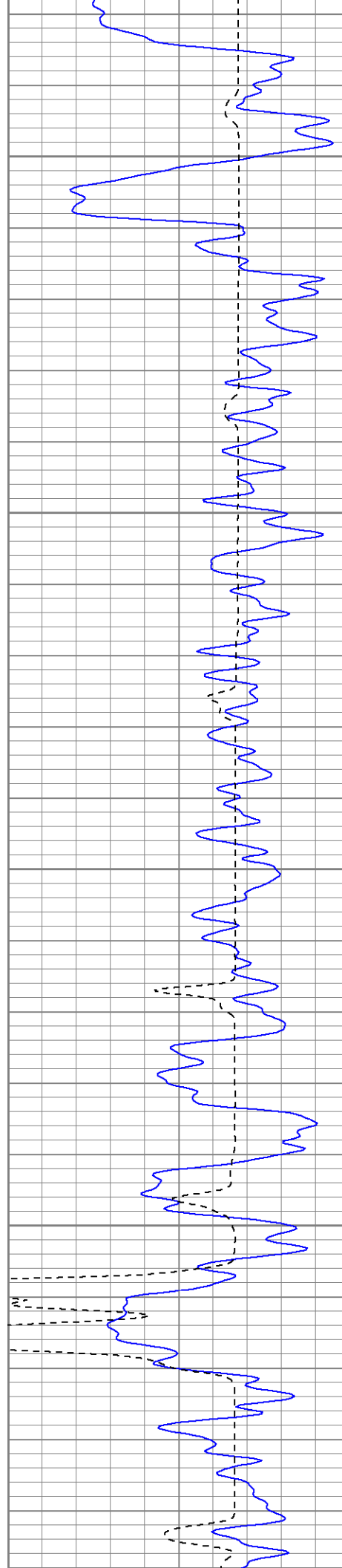
300

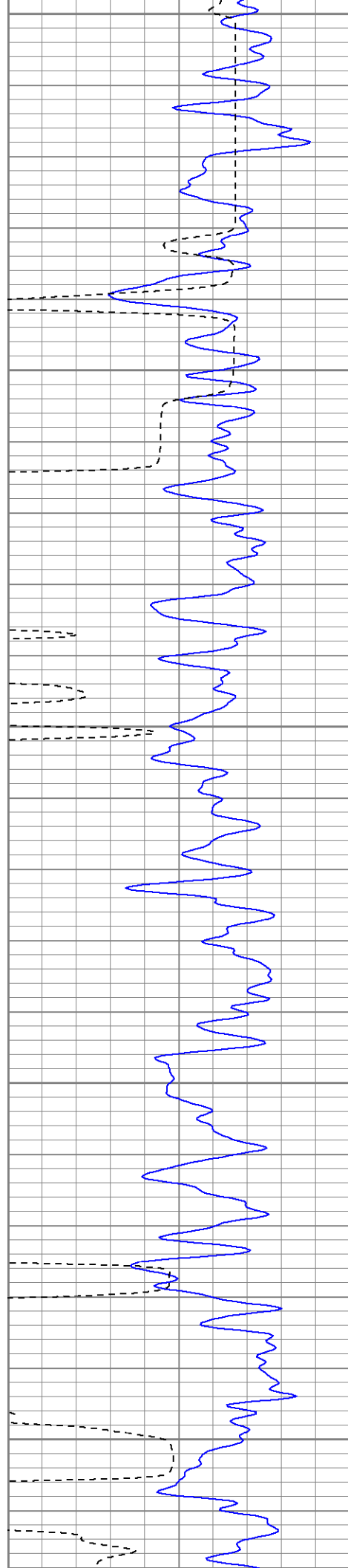
350

400

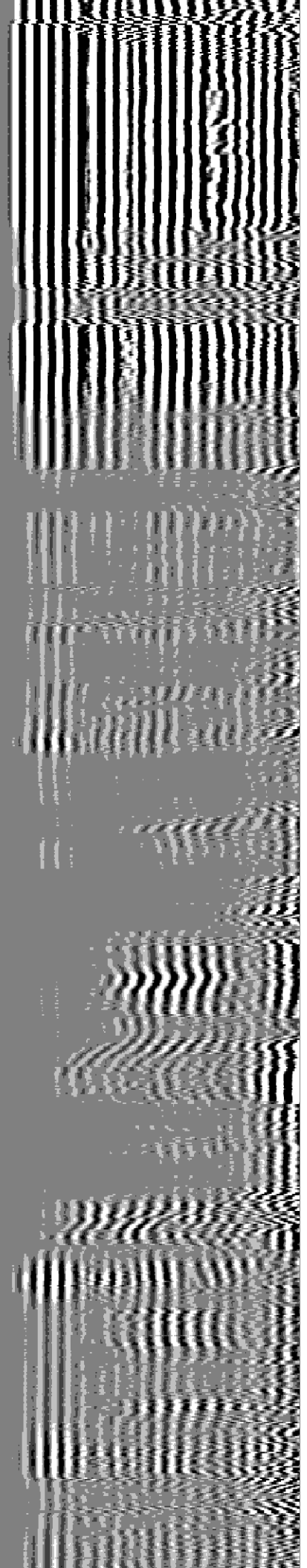
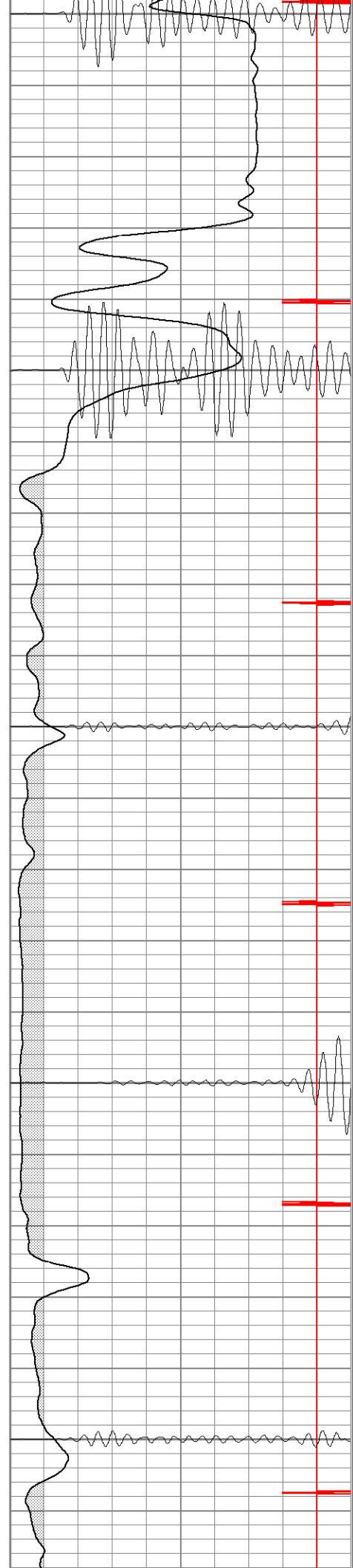


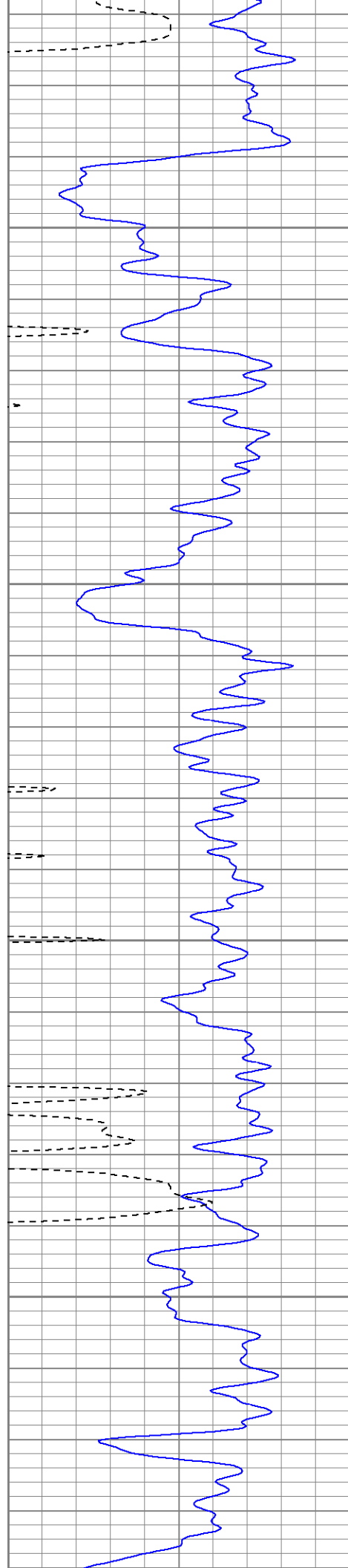






850
900
950
1000
1050



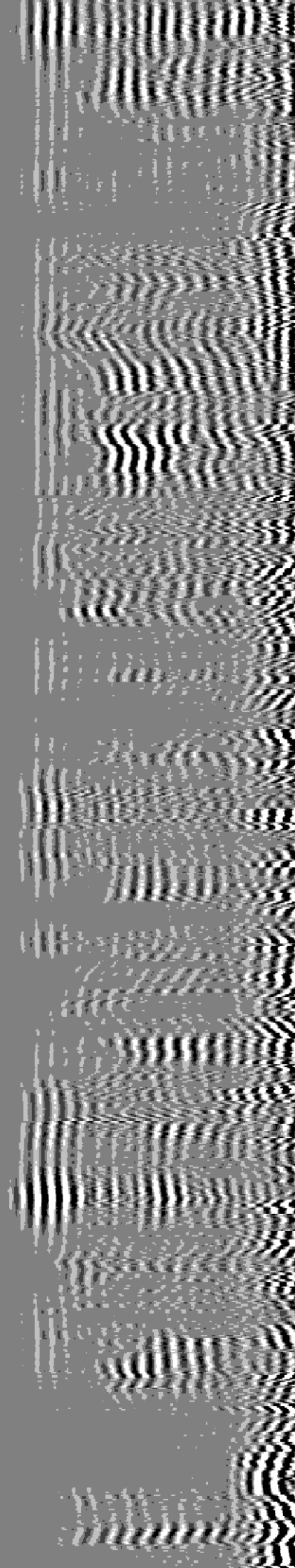
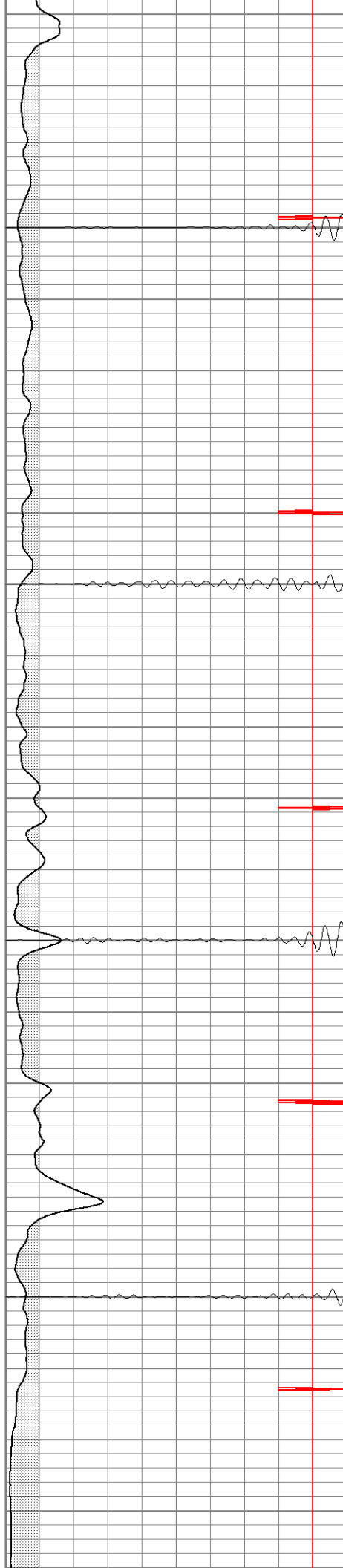


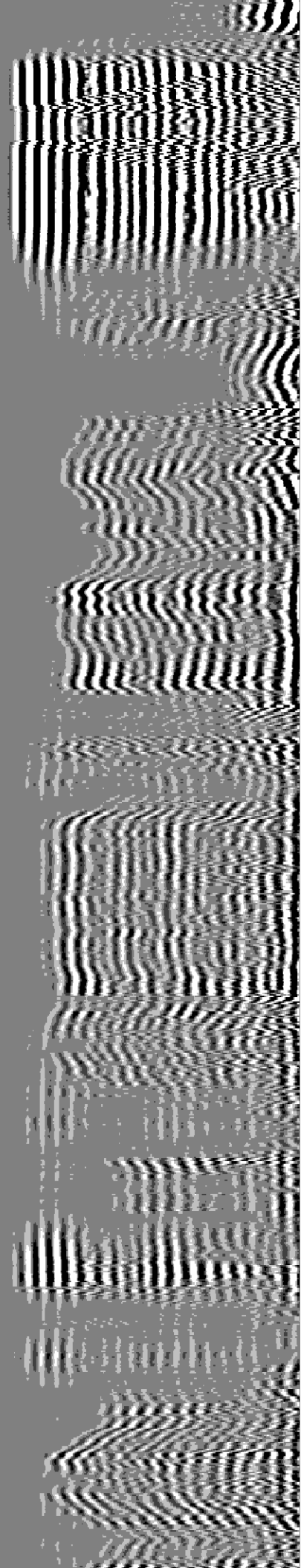
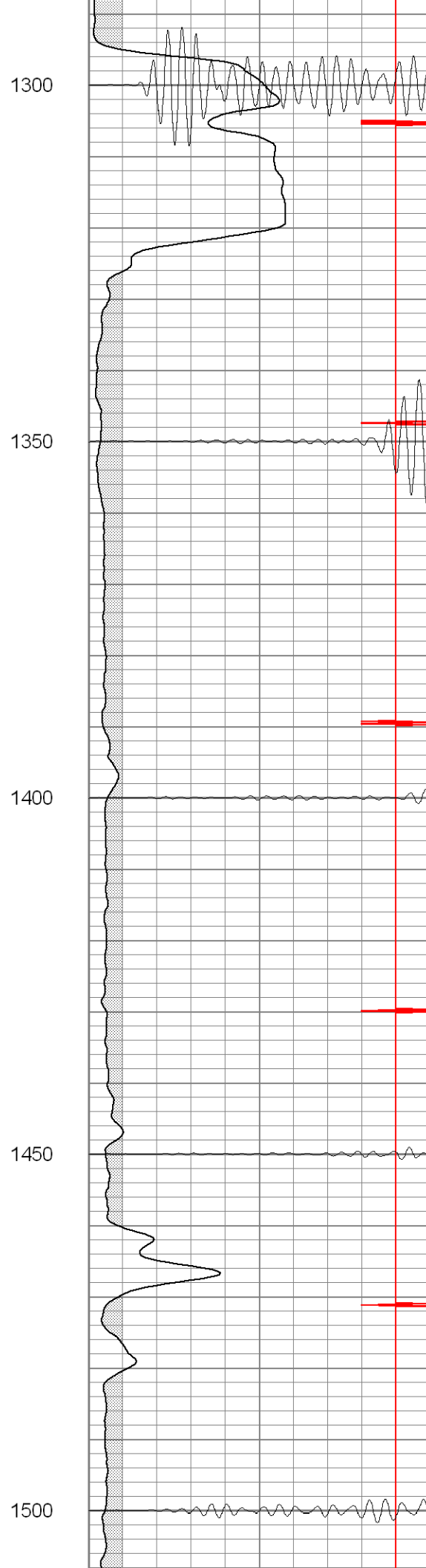
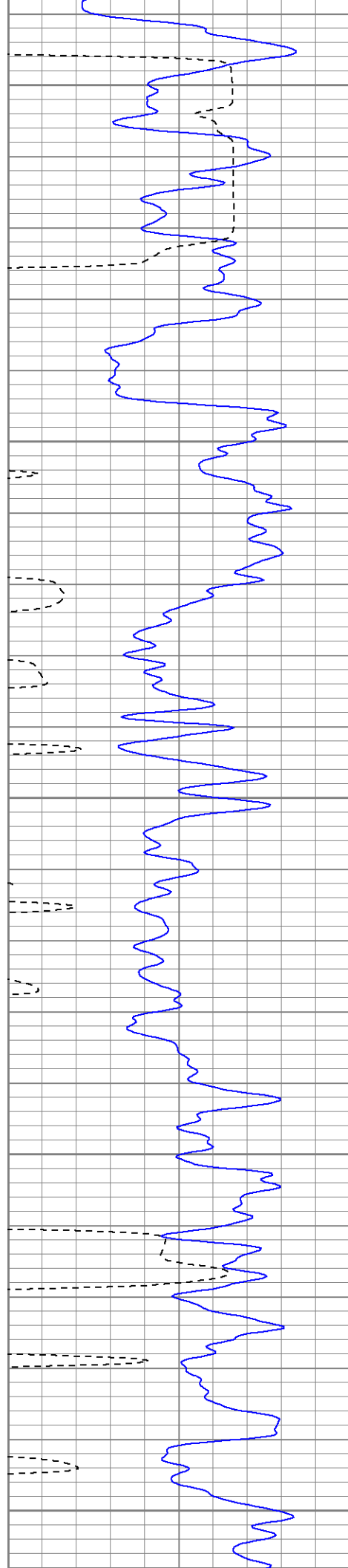
1100

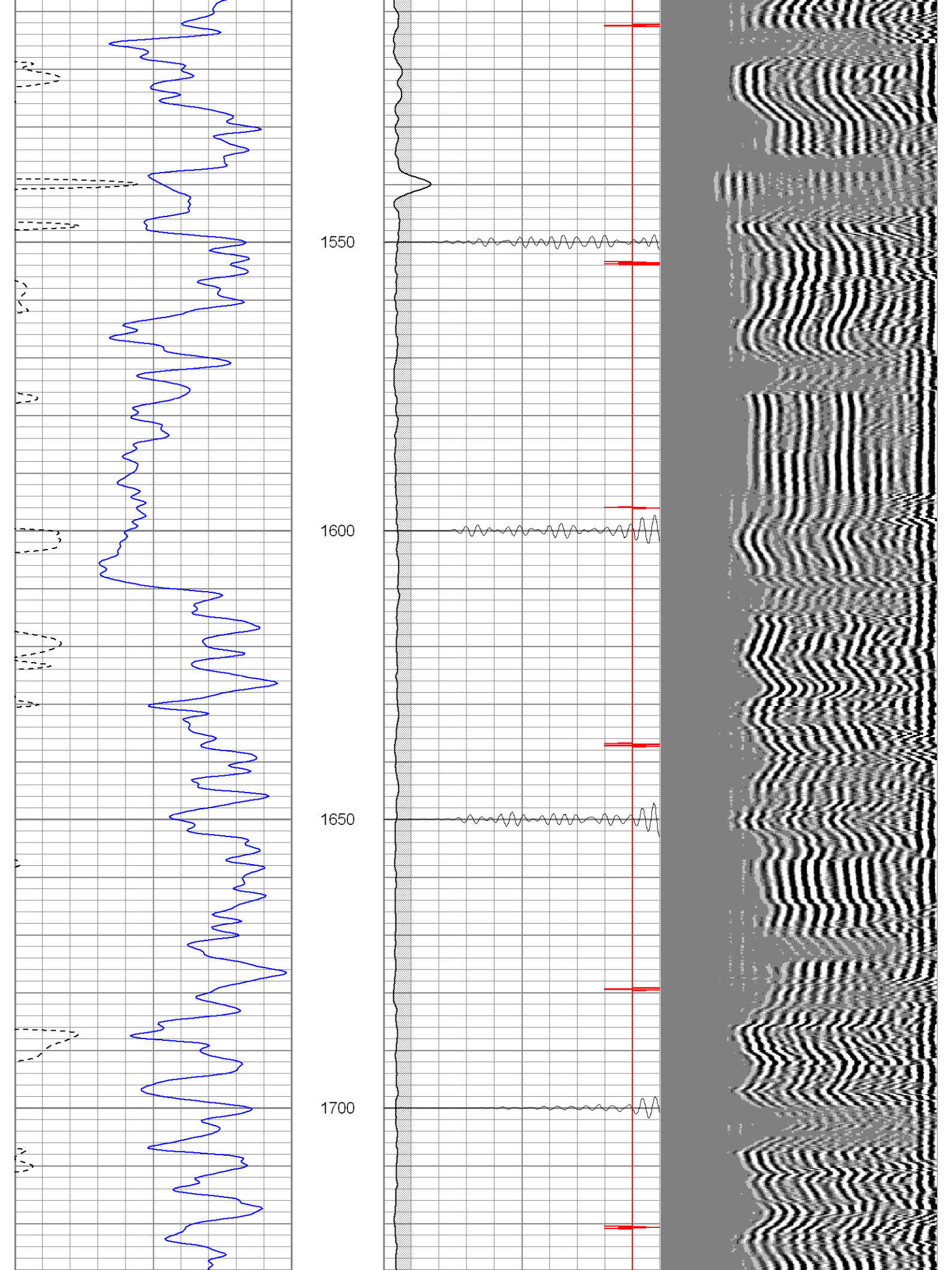
1150

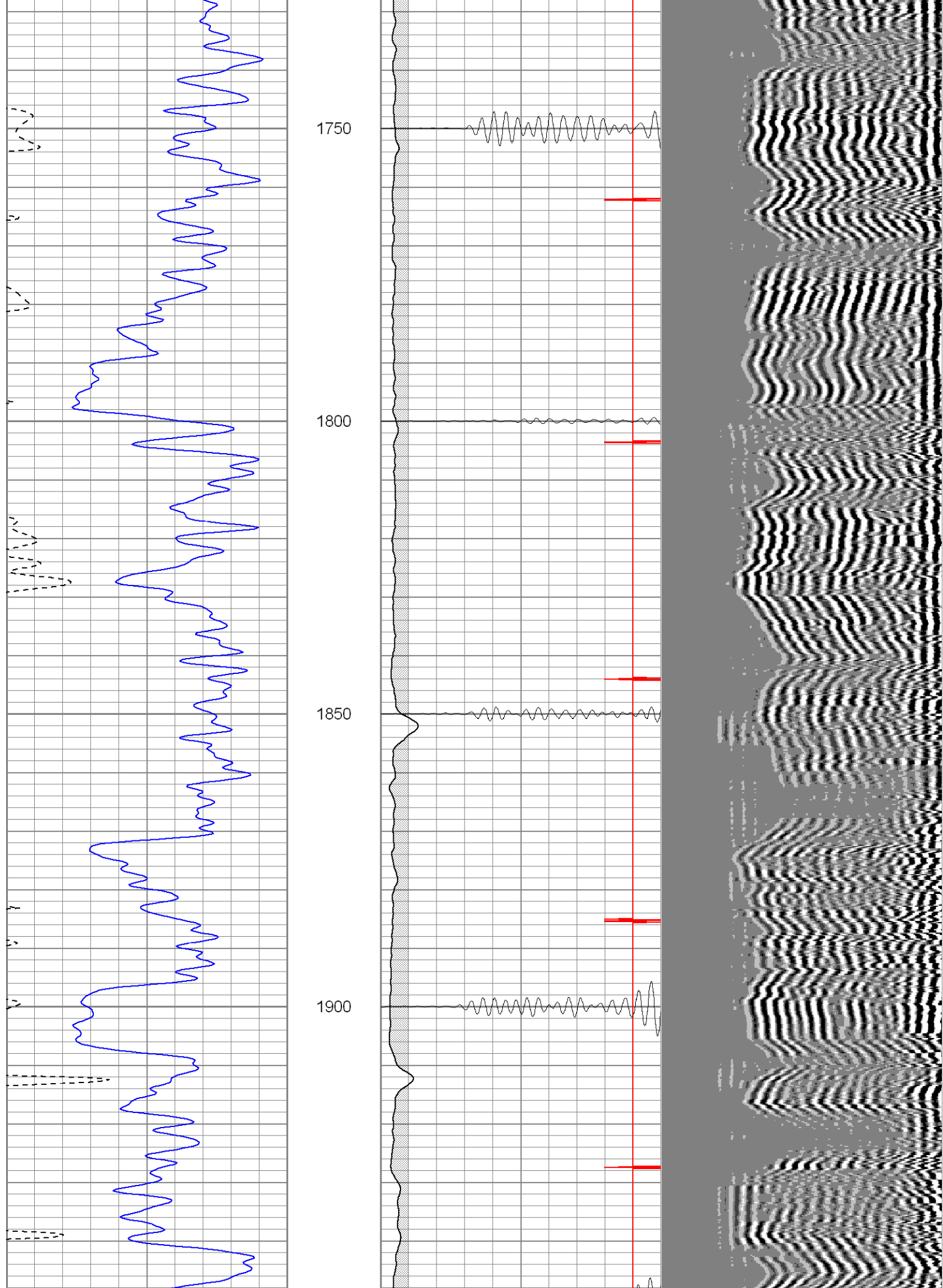
1200

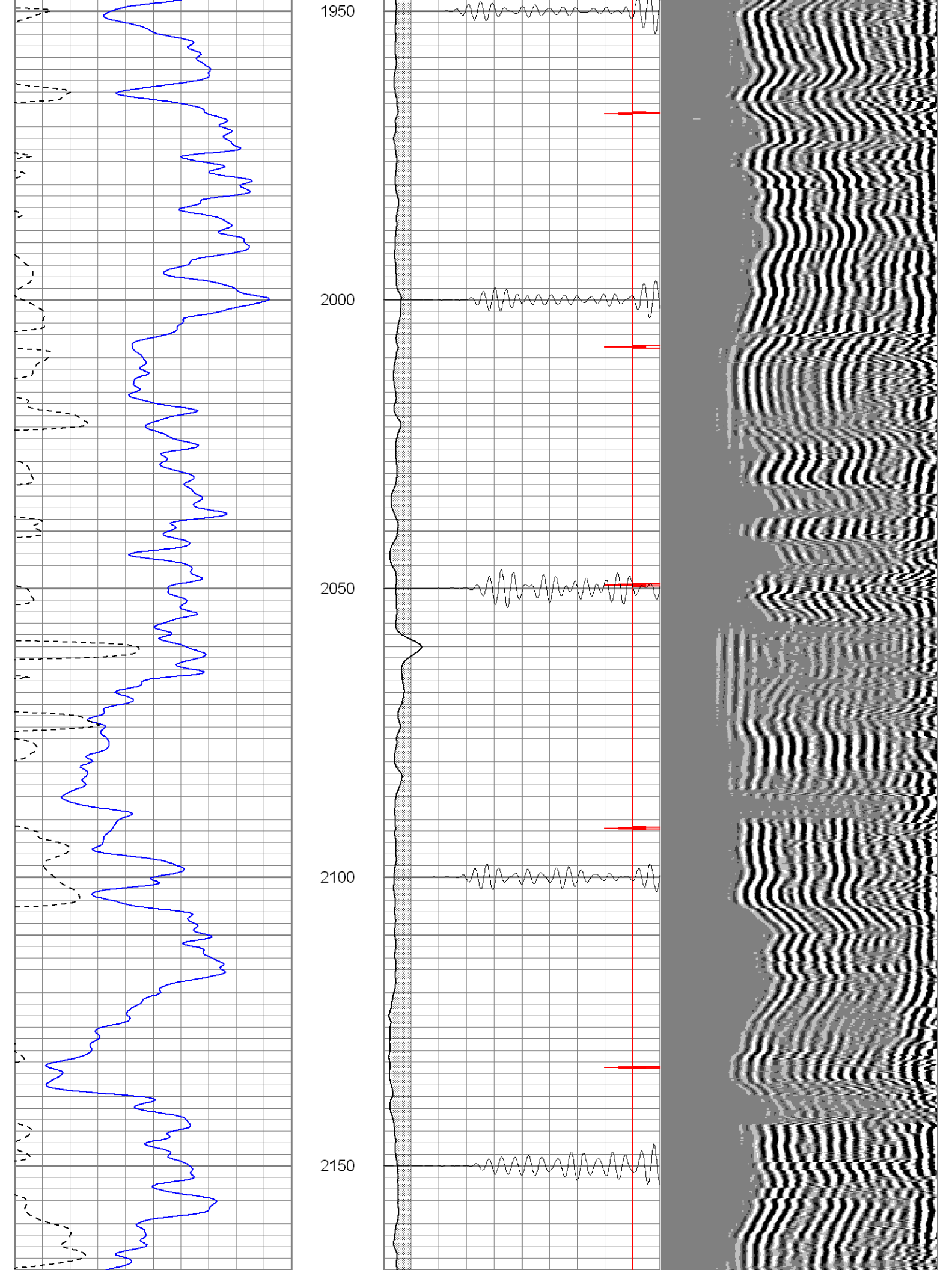
1250

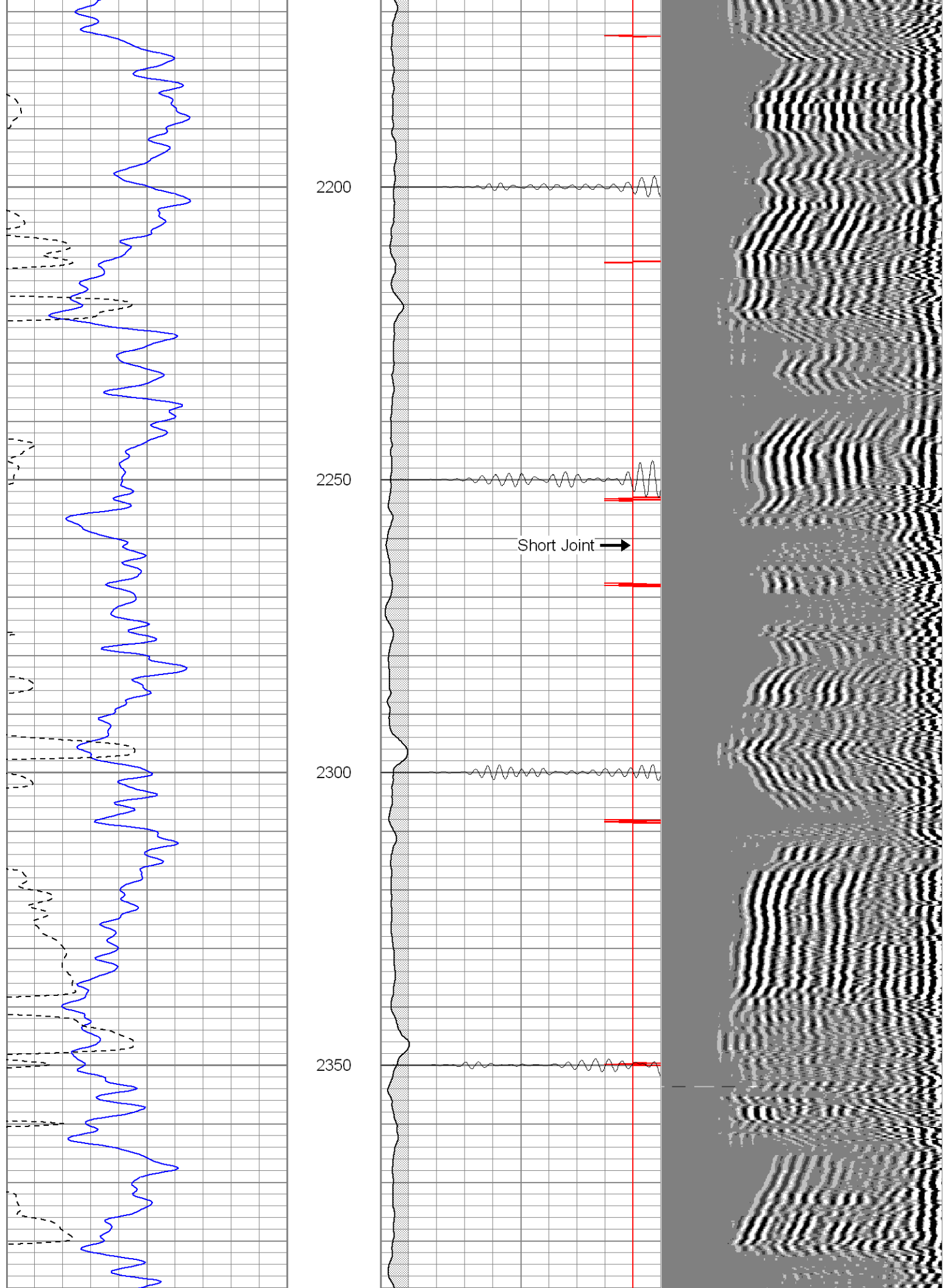


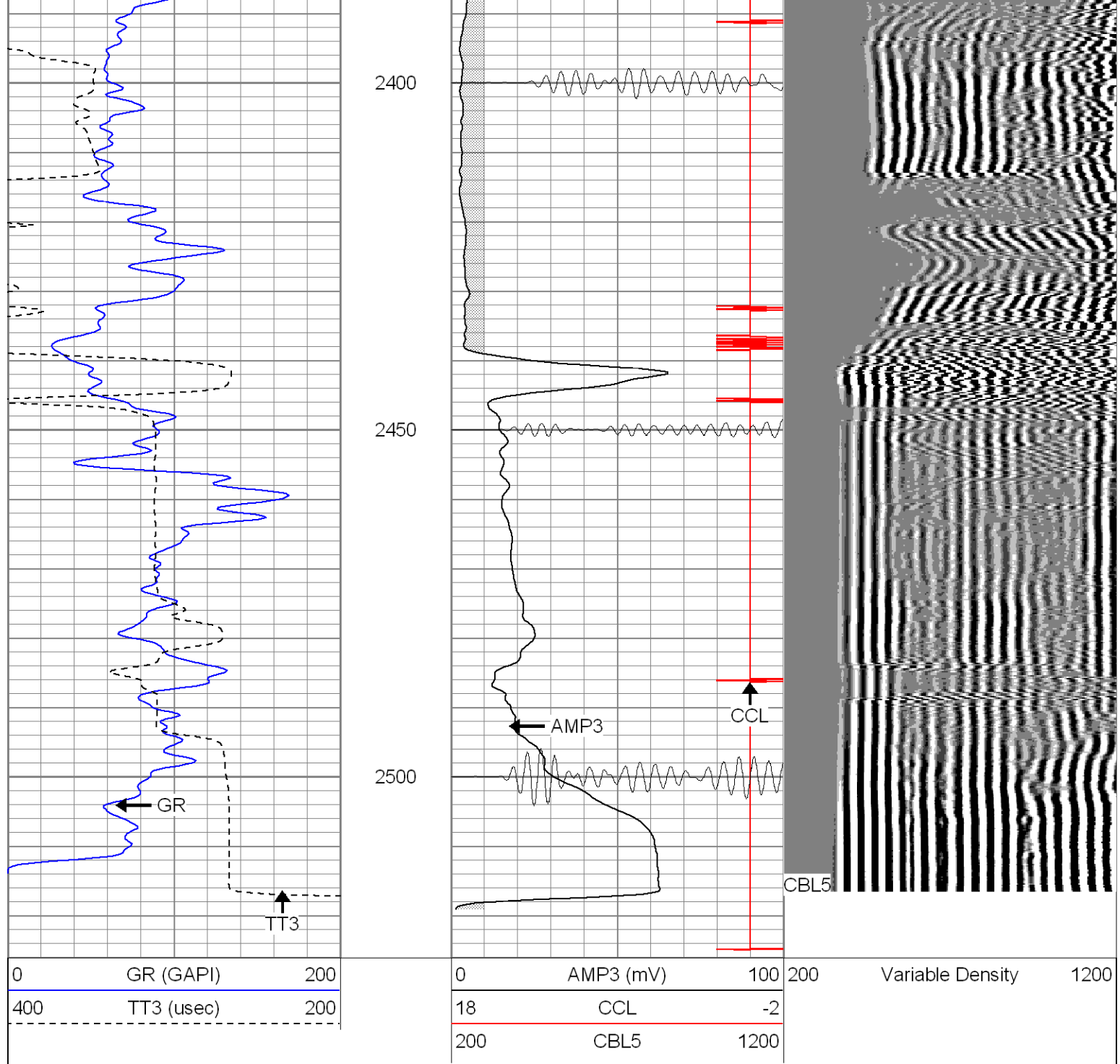










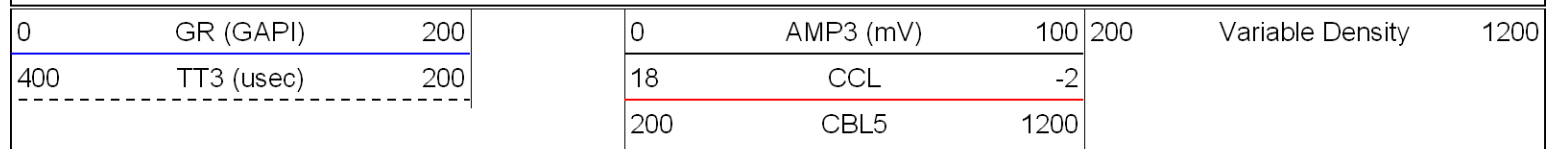


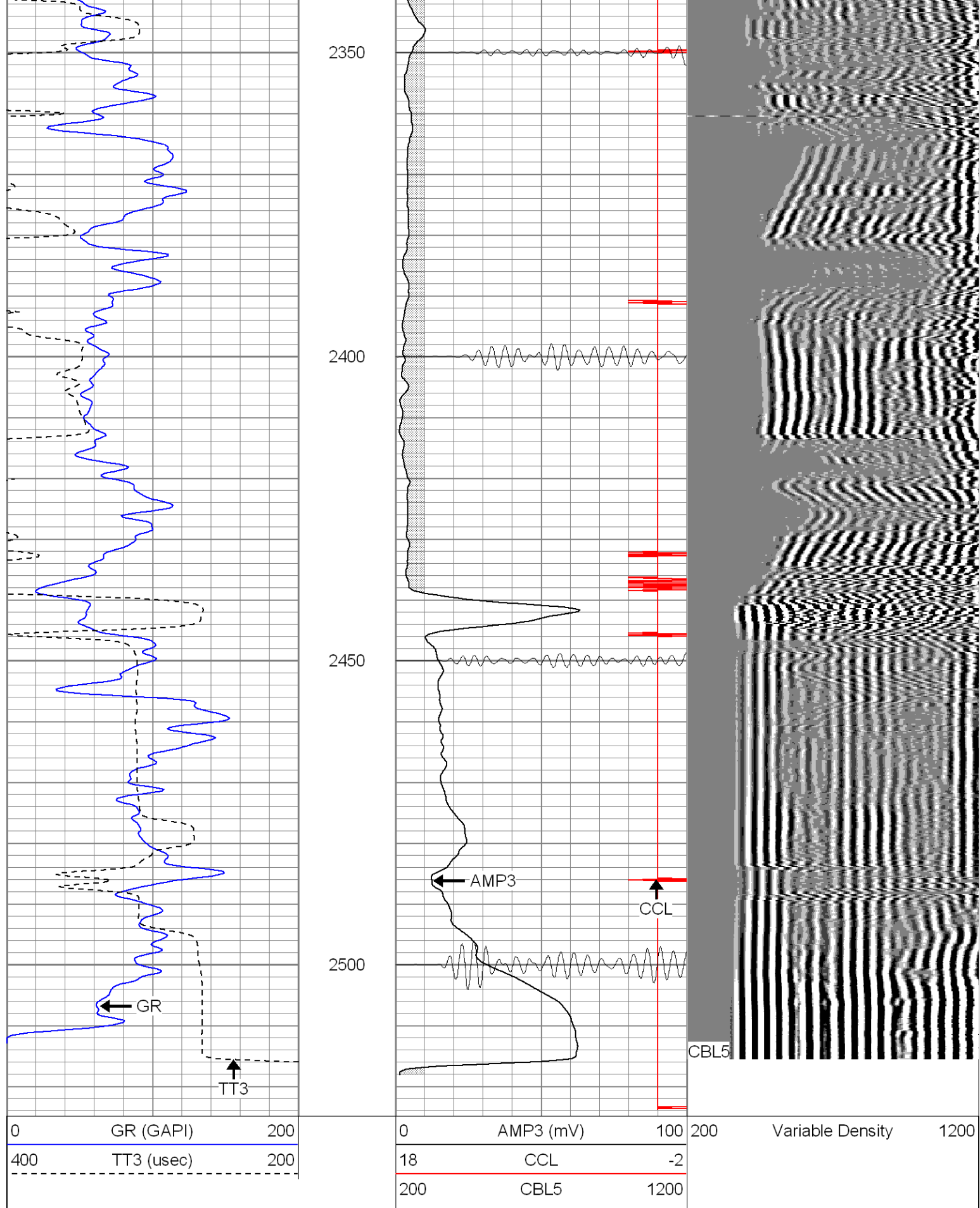
SUPERIOR

Black Lick, Pa.
Mercer, Pa.
Wooster, Oh.
Cleveland, Ok.
Trinidad, Co.

Repeat Section

Database File: pattic52107b.db
Dataset Pathname: pass1
Presentation Format: cblrt
Dataset Creation: Mon May 21 12:10:44 2007 by Log Warrior 7.0 STD Cas
Charted by: Depth in Feet scaled 1:240





Cement Bond Log Calibration Report

Serial Number:
Tool Model:

Titan2
2

Performed: Mon May 21 10:12:59 2007

Depth: 3855.89 ft
Casing Diameter: 5.5 in

3' Spacing 5' Spacing

Signal Zero: 1 1 mV
Calibrated Amplitude: 85 71.921 mV
Reading at Signal Zero: -0.01 -0.00683594 V
Reading in Free Pipe: 1.7 1.4 V

Gain: 49.1228 50.4117
Offset: 1.49123 1.34461

Gamma Ray Calibration Report

Serial Number: TITAN2
Tool Model: T2
Performed: Fri May 11 14:49:08 2007

Calibrator Value: 200.0 GAPI

Background Reading: 54.0 cps
Calibrator Reading: 219.0 cps

Sensitivity: 1.2500 GAPI/cps