



SUPERIOR
Black Lick, Pa.
Mercer, Pa.
Wooster, Oh.
Cleveland, Ok.
Trinidad, Co.

CEMENT BOND GAMMA RAY LOG

Company XTO Energy Inc.
Well Golden Eagle 29-09-2
Field Purgatorie River
County Las Animas
State CO

Company XTO Energy Inc.
Well Golden Eagle 29-09-2
Field Purgatorie River
County Las Animas State CO

Location: API #: 05 071 09362 00
2209' FSL & 441' FEL
SEC 29 TWP 33S RGE 67W
Permanent Datum Ground Level Elevation 7180'
Log Measured From Ground Level
Drilling Measured From Ground Level
Other Services
Pressure Control/
temp.
Elevation
K.B. -----
D.F. -----
G.L. 7180'

Date	1-30-08						
Run Number	One						
Depth Driller	1915'						
Depth Logger	1841'						
Bottom Logged Interval	1840'						
Top Log Interval	Surface						
Open Hole Size	7 7/8"						
Type Fluid	Water						
Density / Viscosity	///						
Max. Recorded Temp.	120F						
Estimated Cement Top	Surface						
Time Well Ready	ROA						
Time Logger on Bottom	8:00AM						
Equipment Number	T0698						
Location	Trinidad						
Recorded By	J Sisneros						
Witnessed By	Mr. Steve Dominguez						
Borehole Record				Tubing Record			
Run Number	Bit	From	To	Size	Weight	From	To
Casing Record	Size		Wgt/Ft		Top		Bottom
Surface String	8 5/8"				00		451'
Prot. String							
Production String	5 1/2"				00		N/A
Liner							

<<< Fold Here >>>

All interpretations are opinions based on inferences from electrical or other measurements and we cannot and do not guarantee the accuracy or correctness of any interpretation, and we shall not, except in the case of gross or willful negligence on our part, be liable or responsible for any loss, costs, damages, or expenses incurred or sustained by anyone resulting from any interpretation made by any of our officers, agents or employees. These interpretations are also subject to our general terms and conditions set out in our current Price Schedule.

Comments

Second Bosque entrance four miles past Weston, first left (old railroad tracks),
First right, first left to location



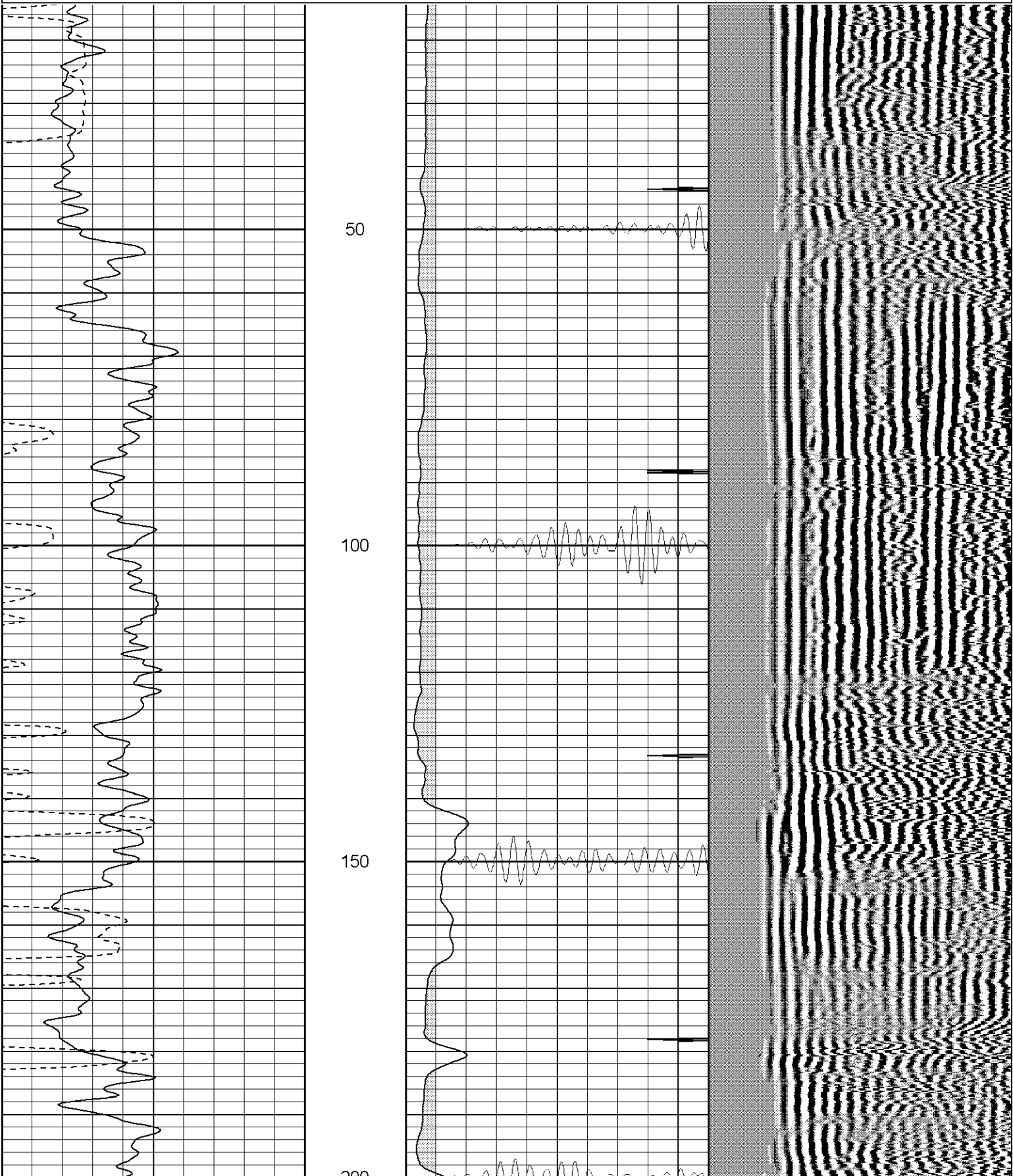
SUPERIOR

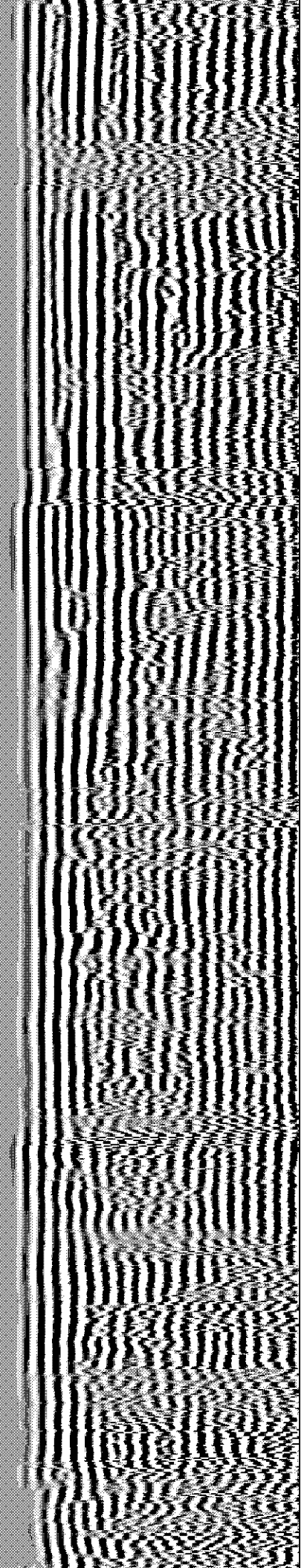
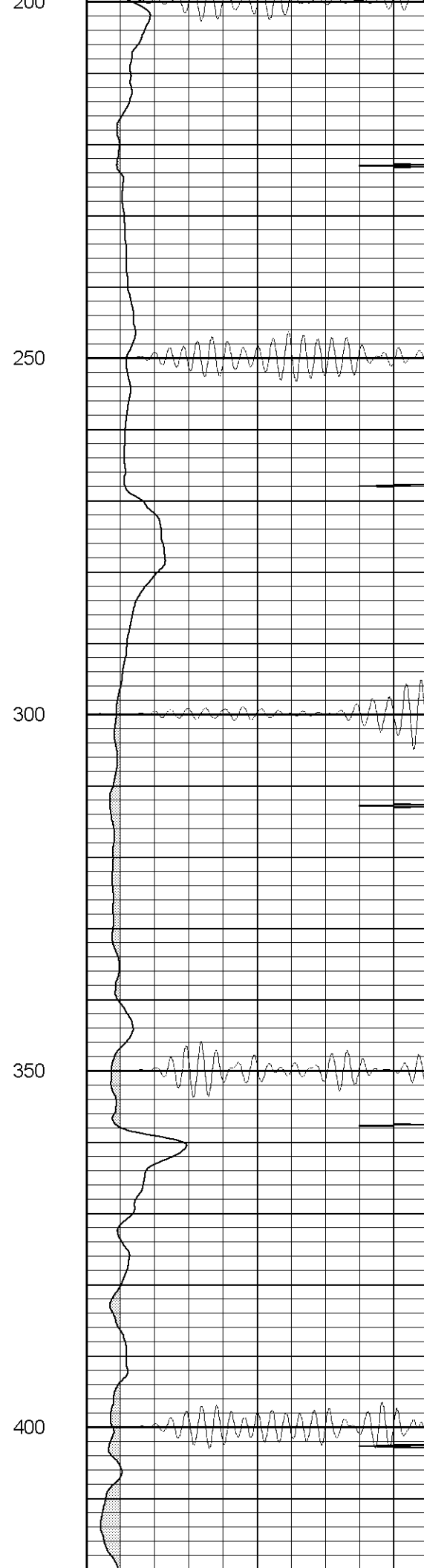
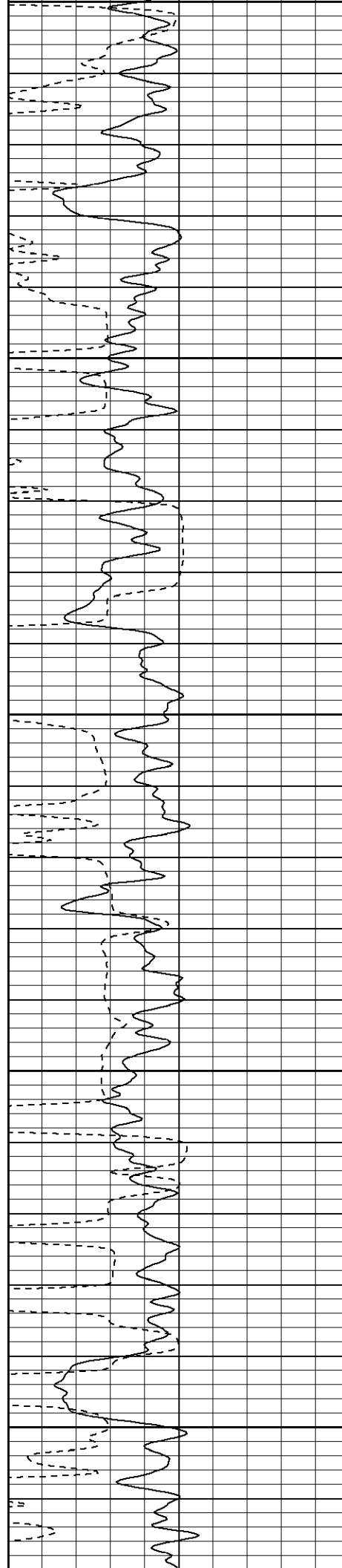
Black Lick, Pa.
Mercer, Pa.
Wooster, Oh.
Cleveland, Ok.
Trinidad, Co.

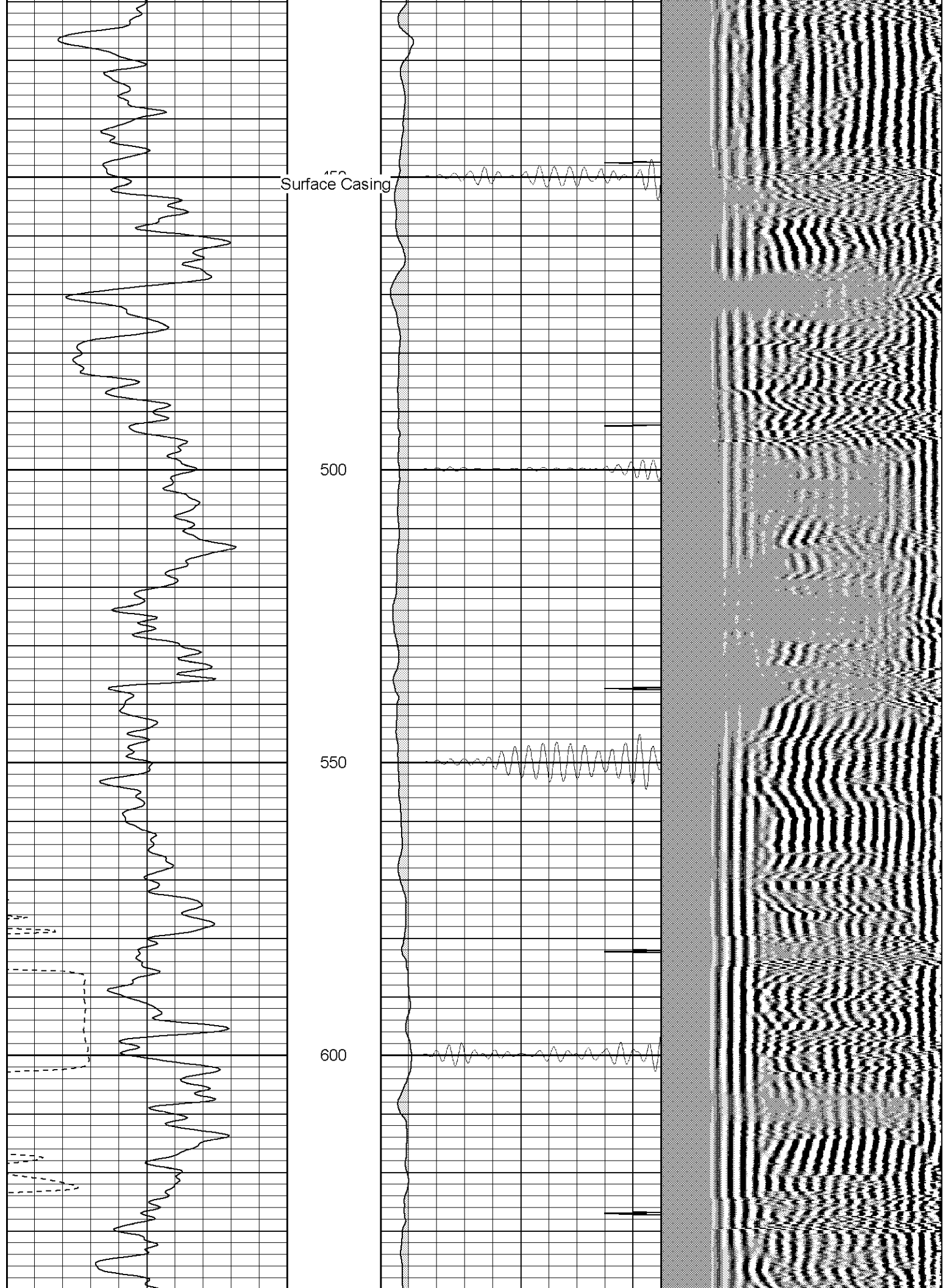
Main Pass (1000PSI)

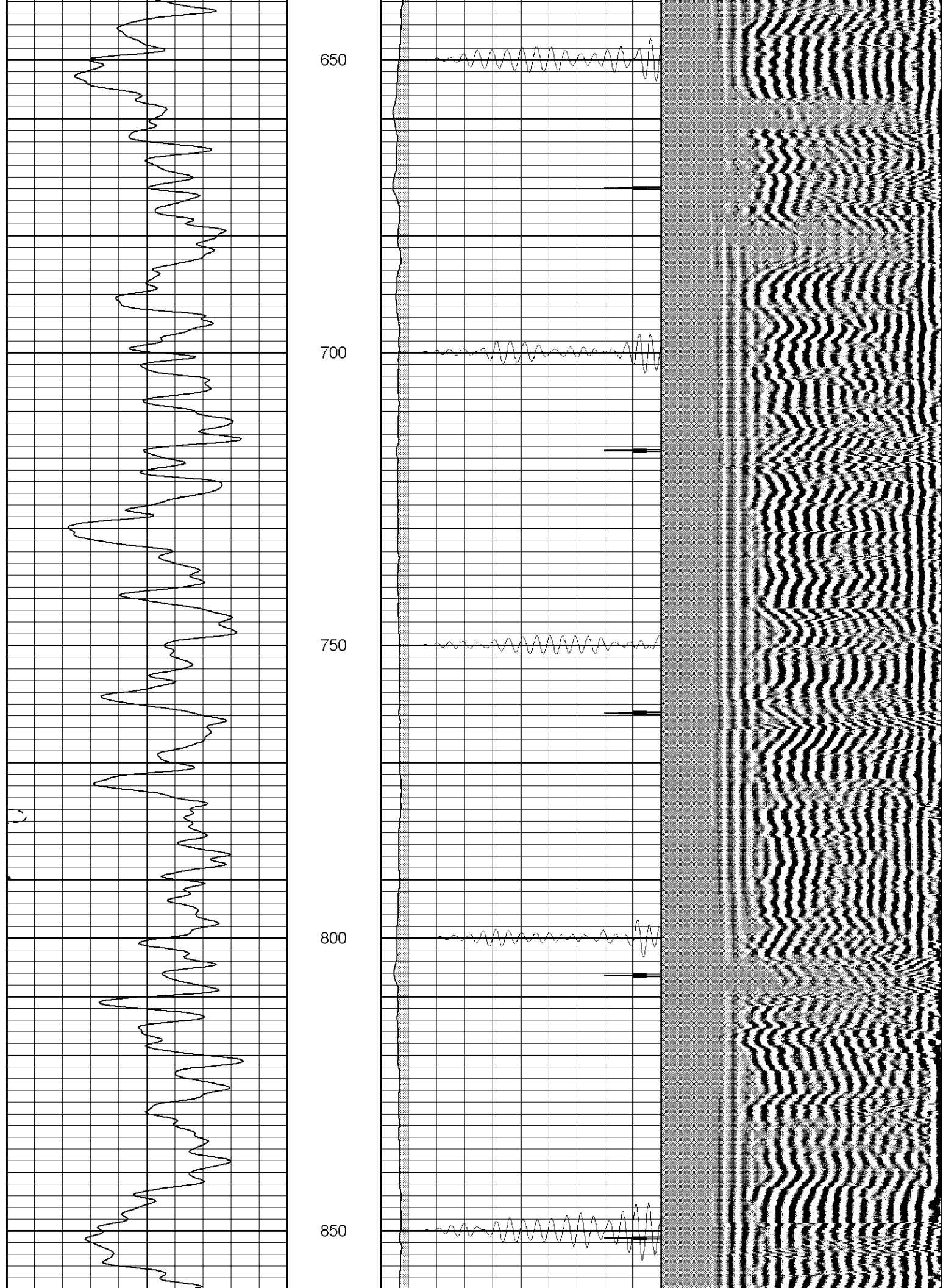
Database File: ge29092013008b .db
Dataset Pathname: pass2.1
Presentation Format: cblrt
Dataset Creation: Wed Jan 30 21:04:37 2008 by Calc Open-Cased 070814
Charted by: Depth in Feet scaled 1:240

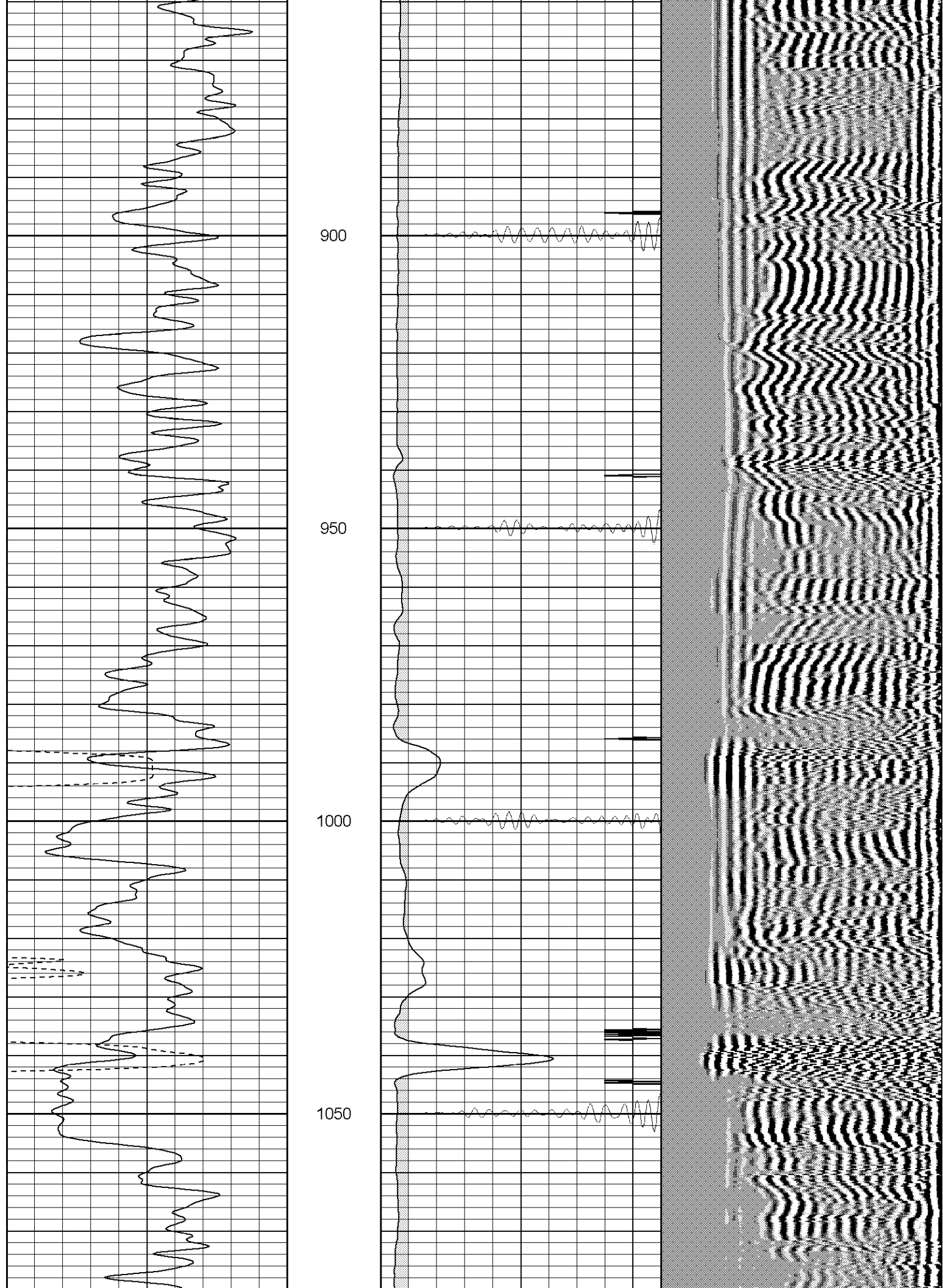
0	GR (GAPI)	200	0	AMP3 (mV)	100	200	Variable Density	1200
400	TT3 (usec)	200	18	CCL	-2			
-----			200	CBL5	1200			

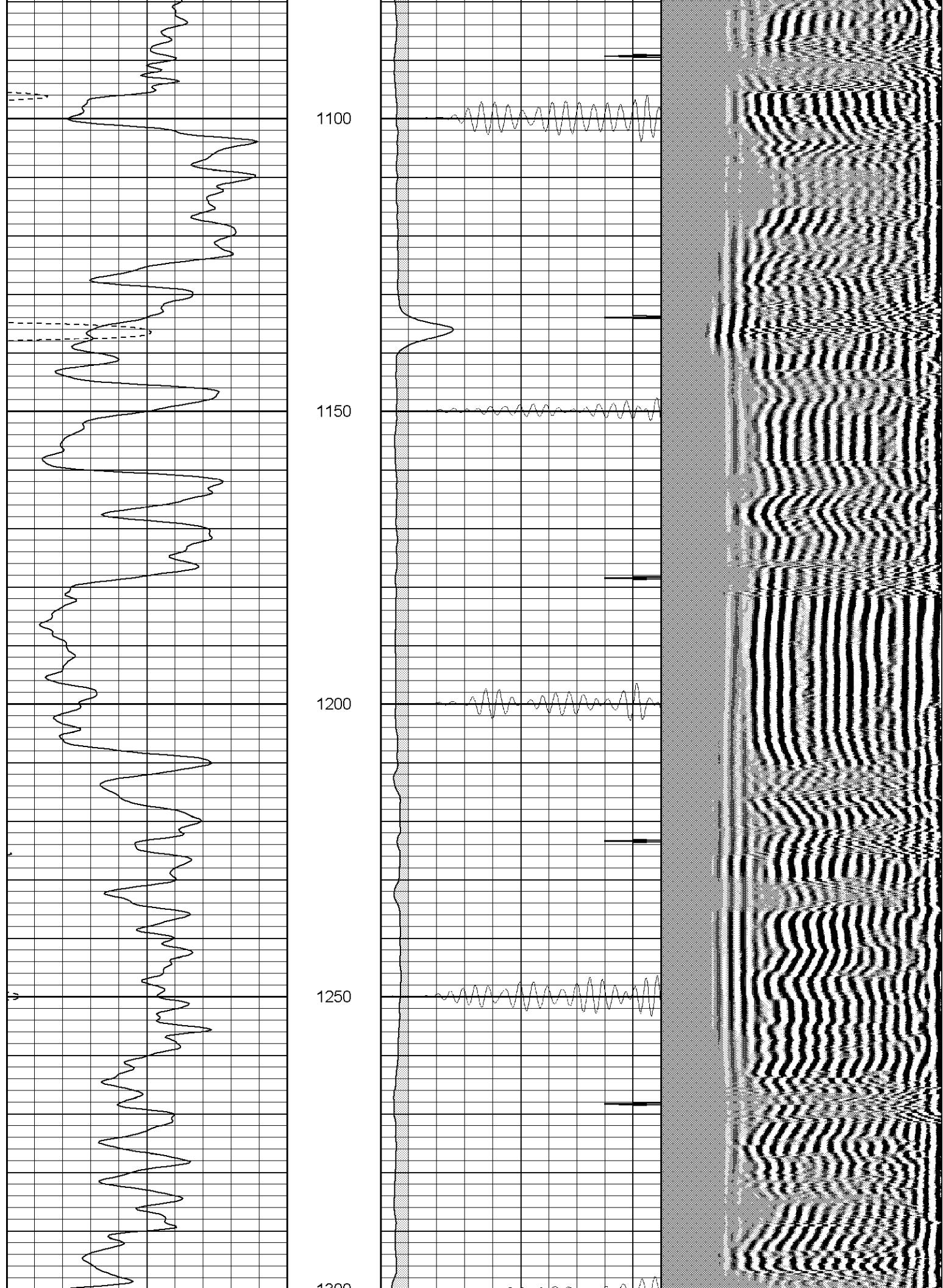


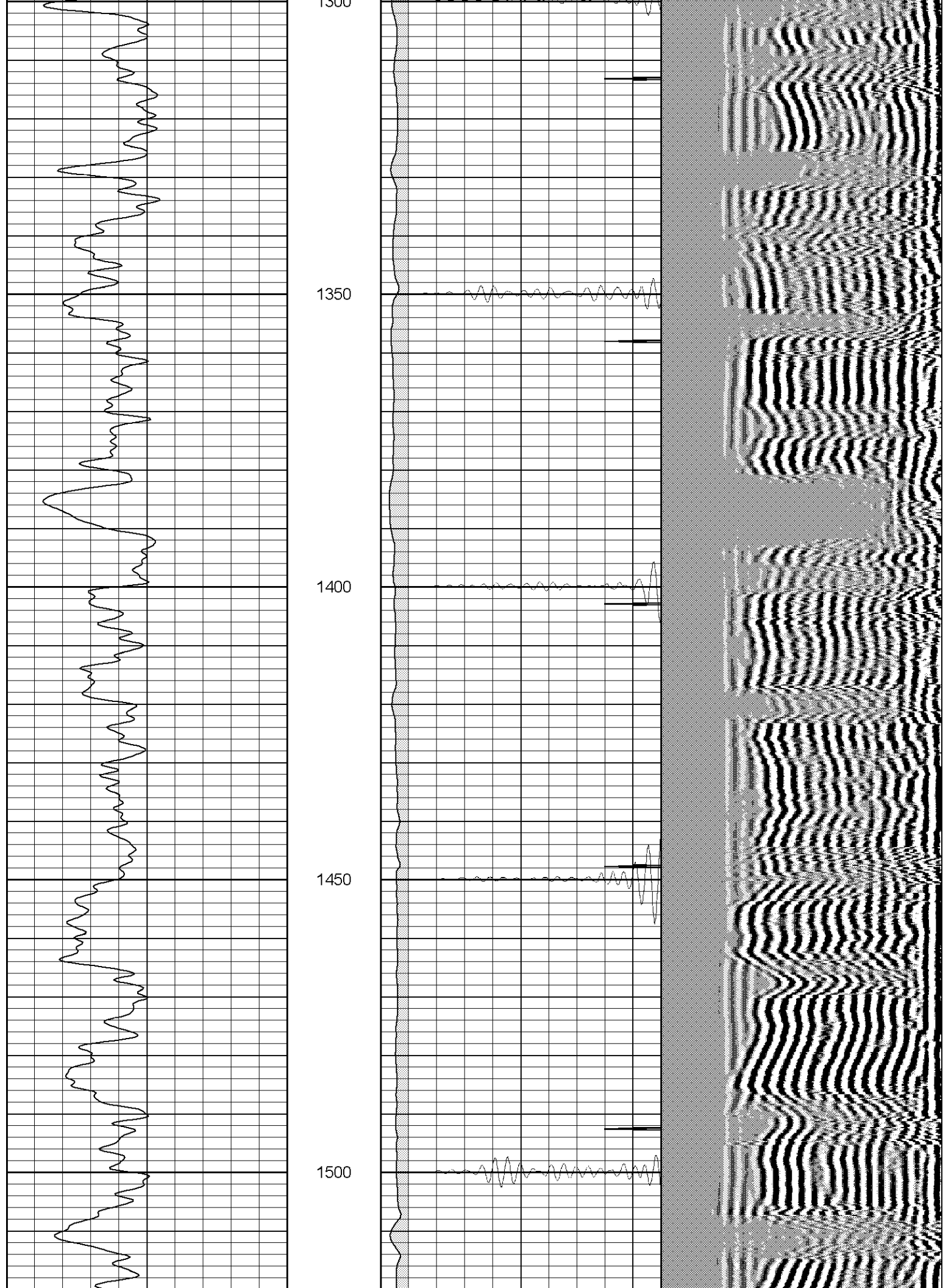


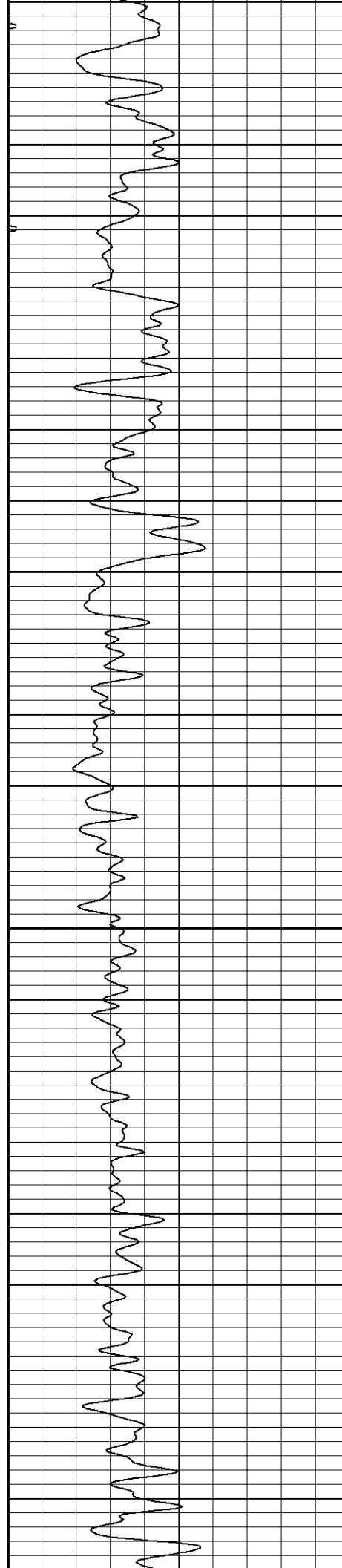










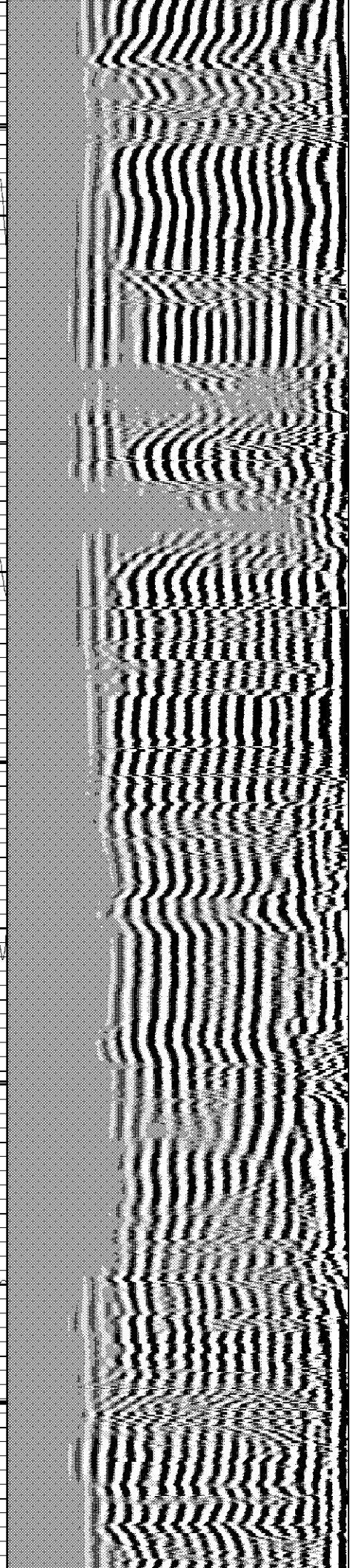
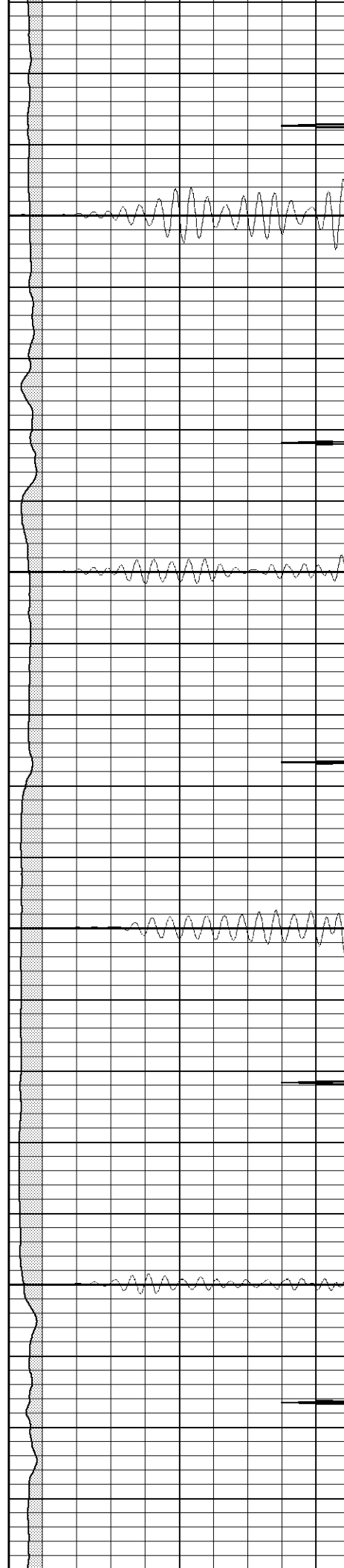


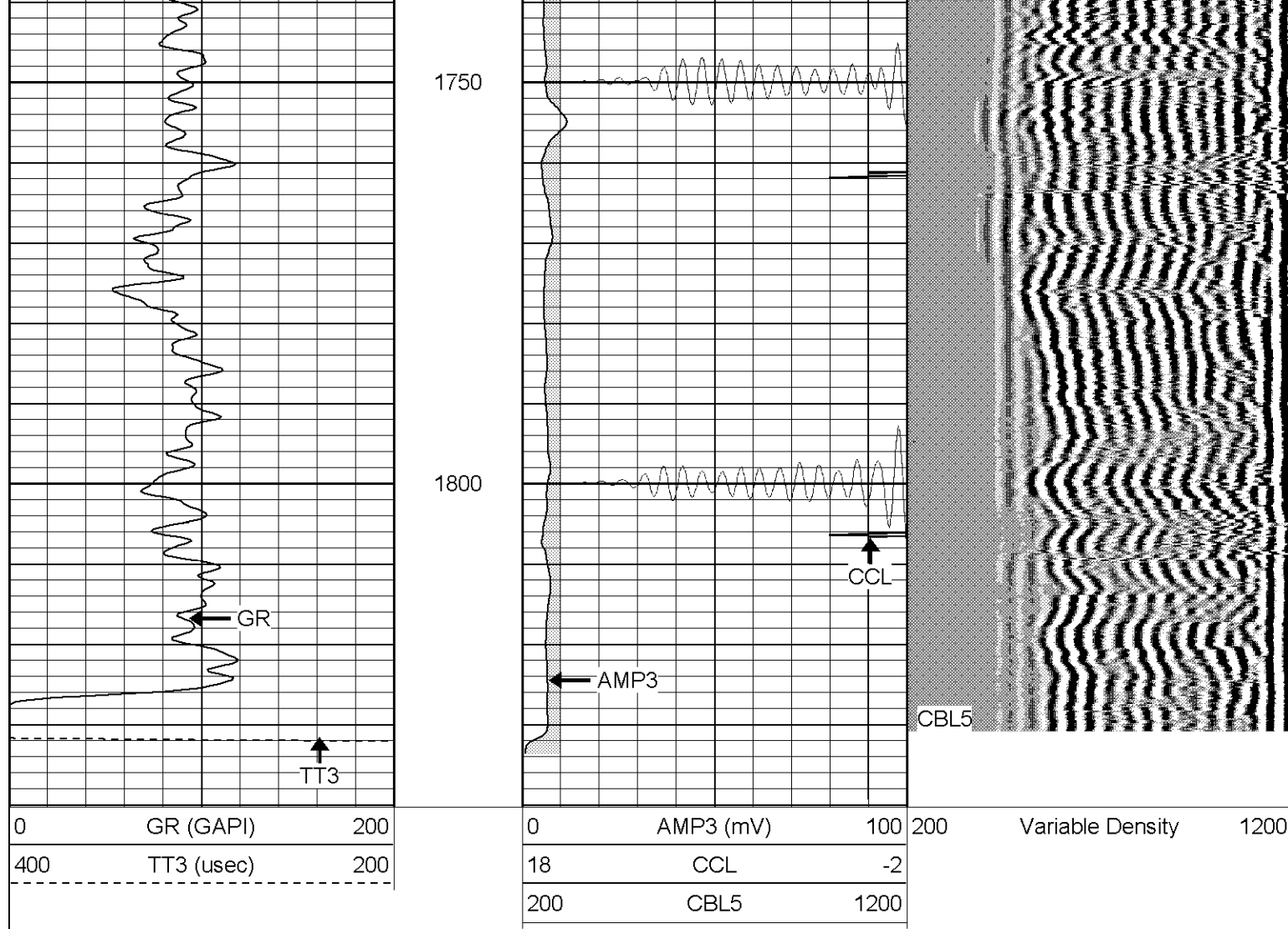
1550

1600

1650

1700



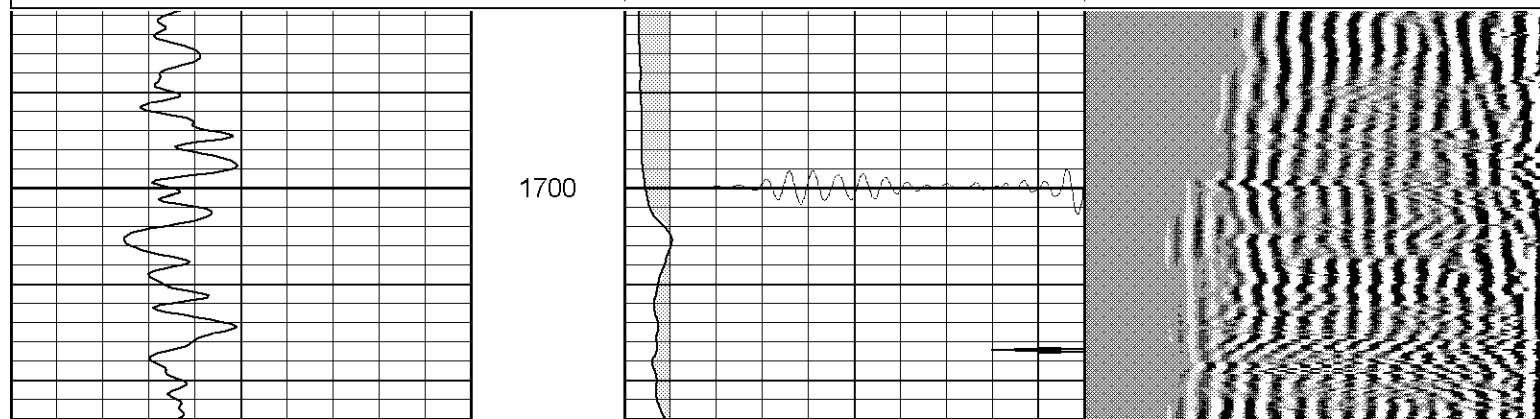
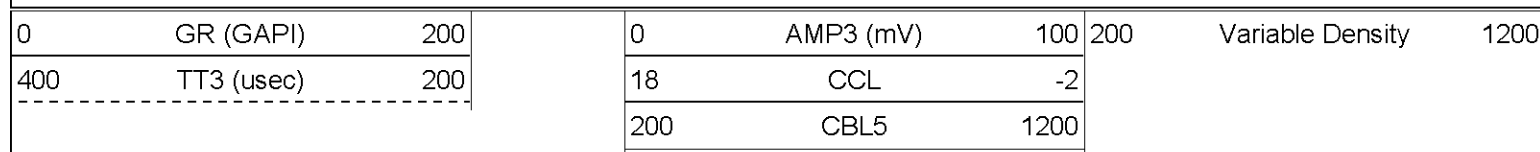


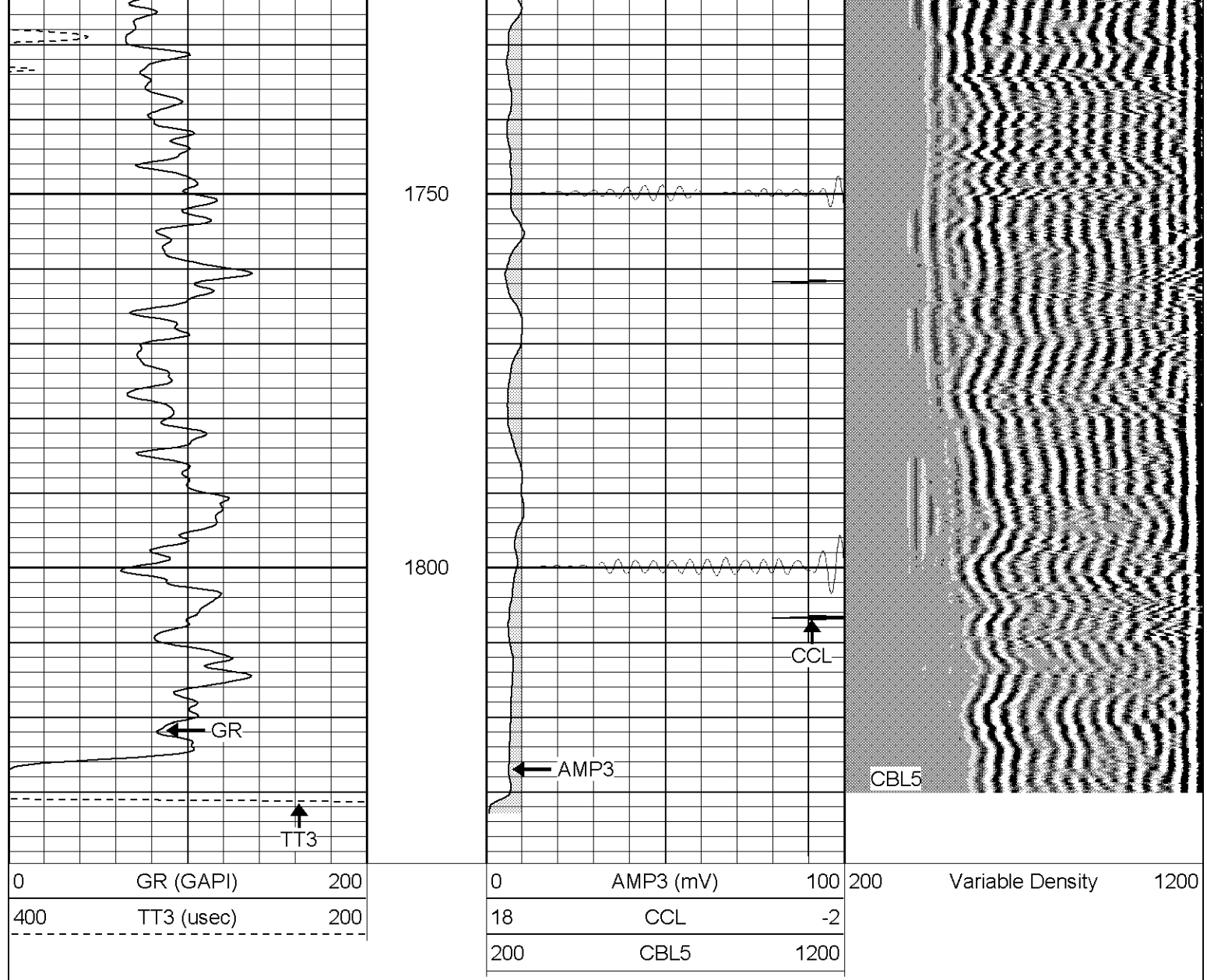
SUPERIOR

Black Lick, Pa.
Mercer, Pa.
Wooster, Oh.
Cleveland, Ok.
Trinidad, Co.

Repeat Section (0PSI)

Database File: ge29092013008b .db
Dataset Pathname: pass1
Presentation Format: cblrt
Dataset Creation: Wed Jan 30 20:06:35 2008 by Log Open-Cased 070814
Charted by: Depth in Feet scaled 1:240





Calibration Report

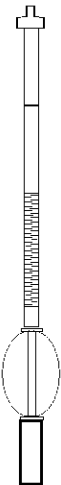
Database File: ge29092013008b .db
 Dataset Pathname: pass1
 Dataset Creation: Wed Jan 30 20:06:35 2008 by Log Open-Cased 070814

Cement Bond Log Calibration Report

Serial Number:	Titan6		
Tool Model:	T6		
Performed:	Mon Jan 28 15:43:51 2008		
Depth:	206.576	ft	
Casing Diameter:	5.5	in	
	3' Spacing	5' Spacing	
Signal Zero:	0	0	mV
Calibrated Amplitude:	85	85	mV
Reading at Signal Zero:	0.0194092	0	V
Reading in Free Pipe:	1.45	1.2	V
Gain:	59.416	70.8333	
Offset:	1	0	

Gamma Ray Calibration Report

Sensitivity: 1.2000 GAP/cps

Sensor	Offset (ft)	Schematic	Description	Len (ft)	OD (in)	Wt (lb)	
GR	13.64		CHD-None (0)	0.75	1.50	5.00	
			GR-T6 (Titan6)	2.52	2.25	25.00	
WVF5	9.49						
WVF3	8.49			CBL-T6 (Titan6)	7.23	2.25	110.00
				CENT-X (2)	3.00	1.69	25.00
CCL	0.81		CCL-T6long (Titan6long)	2.15	2.75	15.00	
		Dataset: ge29092013008b.db: field/well/run1/pass1 Total Length: 15.66 ft Total Weight: 180.00 lb O.D. 2.75 in					