

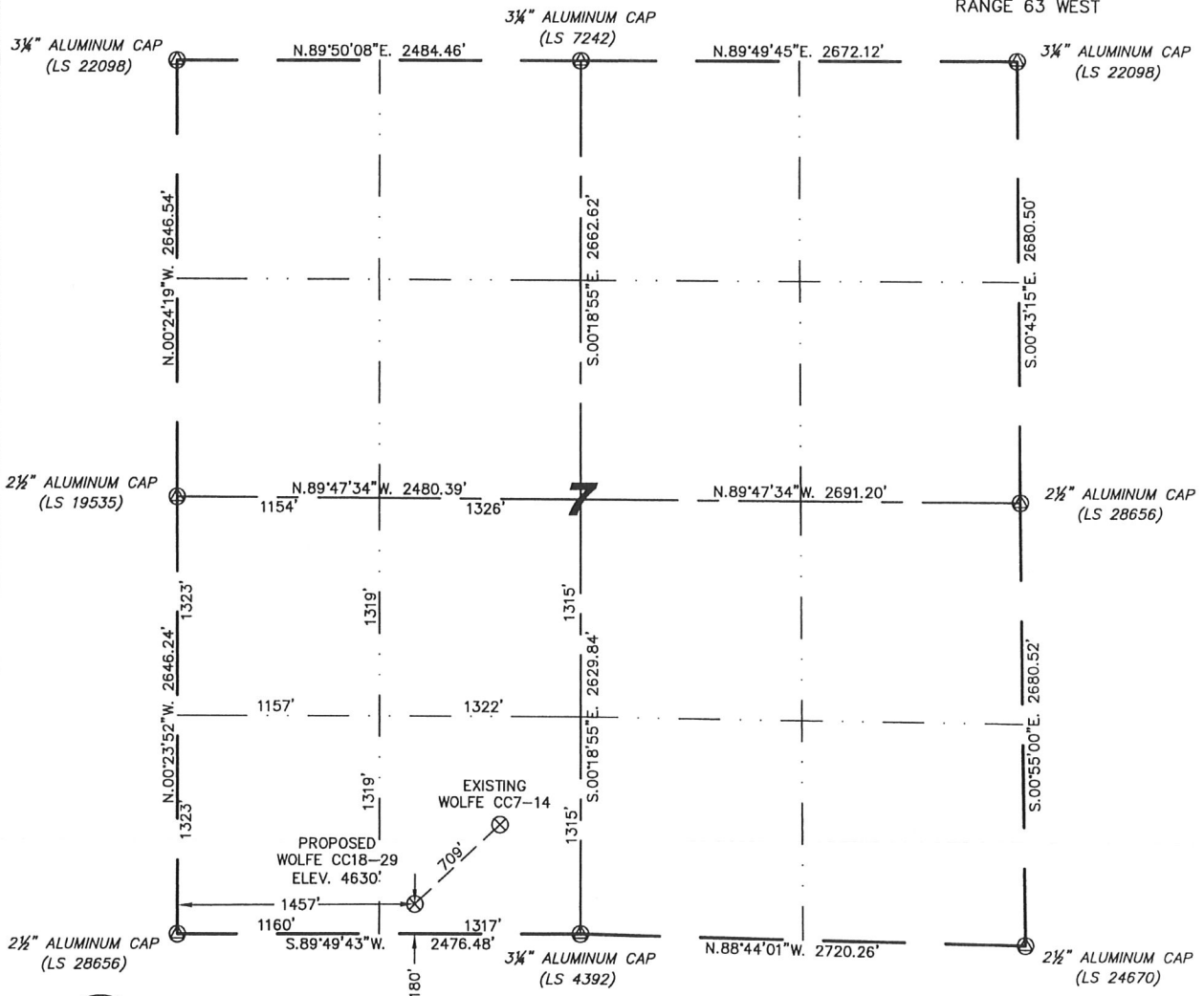
Steil Surveying Services, LLC

1102 West 19th Street P.O. BOX 2073

Cheyenne, Wyoming 82009

WELL LOCATION CERTIFICATE  
THIS MAP DOES NOT REPRESENT A BOUNDARY SURVEY

SECTION 7  
TOWNSHIP 4 NORTH  
RANGE 63 WEST



0 1000  
Scale: 1" = 1000'

IN ACCORDANCE WITH A REQUEST FROM ROBBIE MILLER - NOBLE ENERGY INC., STEIL SURVEYING SERVICES, LLC HAS DETERMINED THE LOCATION OF THE WOLFE CC18-29 WELL TO BE 180' FSL, 1457' FWL, AS MEASURED AT NINETY (90) DEGREES FROM THE SECTION LINES, SECTION 7, TOWNSHIP 4 NORTH, RANGE 63 WEST, 6TH PRINCIPLE MERIDIAN, WELD COUNTY, COLORADO.

I HEREBY CERTIFY THAT THIS WELL LOCATION CERTIFICATE WAS PREPARED BY ME, OR UNDER MY DIRECT SUPERVISION, THAT THE FIELD WORK WAS COMPLETED ON 10/20/2009, FOR AND ON BEHALF OF NOBLE ENERGY INC., THAT IT IS NOT A LAND SURVEY PLAT OR AN IMPROVEMENT SURVEY PLAT, AND THAT IT IS NOT TO BE RELIED UPON FOR ESTABLISHMENT OF FENCE, BUILDING, OR OTHER FUTURE IMPROVEMENT LINES.

NOTES:

- 1) BASIS OF BEARINGS FOR THIS MAP ARE BASED UPON GPS OBSERVATIONS MADE ON 07/14/2006 BETWEEN MONUMENTS LOCATED AT THE SOUTHEAST SECTION CORNER AND THE NORTHEAST SECTION CORNER OF SAID SECTION AND WITH ALL BEARINGS SHOWN HEREON RELATIVE THERETO.
- 2) ELEVATIONS ARE BASED UPON NGS OPUS SOLUTION NAVD 88 DATUM.
- 3) THE NEAREST EXISTING WELL IS: WOLFE CC7-14, 709' NORTHEAST.
- 4) SEE VISIBLE IMPROVEMENTS EXHIBIT FOR ALL IMPROVEMENTS WITHIN 400'.
- 5) THE LOCATION FALLS IN IRRIGATED CROP LAND.

LATITUDE & LONGITUDE (NAD 83 SURFACE HOLE):  
LATITUDE: N 40.32010°  
LONGITUDE: W 104.48444°  
PDOP: 2.0  
QUARTER-QUARTER: SE/4SW/4  
NEAREST PROPERTY LINE: 180' TO THE SOUTH

LEGEND

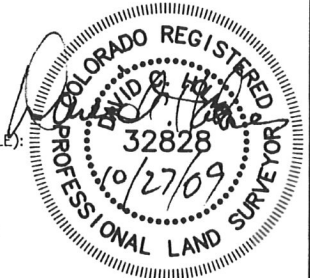
- ⊙ FOUND SURVEY MONUMENT PER  
MONUMENT RECORD - EXCEPTIONS NOTED.
- (C) CALCULATED DIMENSION

NOTICE: According to Colorado law you MUST commence any legal action based upon any defect in this W.L.C. within three years after you first discover such defect. In no event may any action based upon any defect in this W.L.C. be commenced more than ten years from this said date of the certification shown hereon.

David C. Holmes  
Professional Land Surveyor Registration No. 32828  
State of Colorado

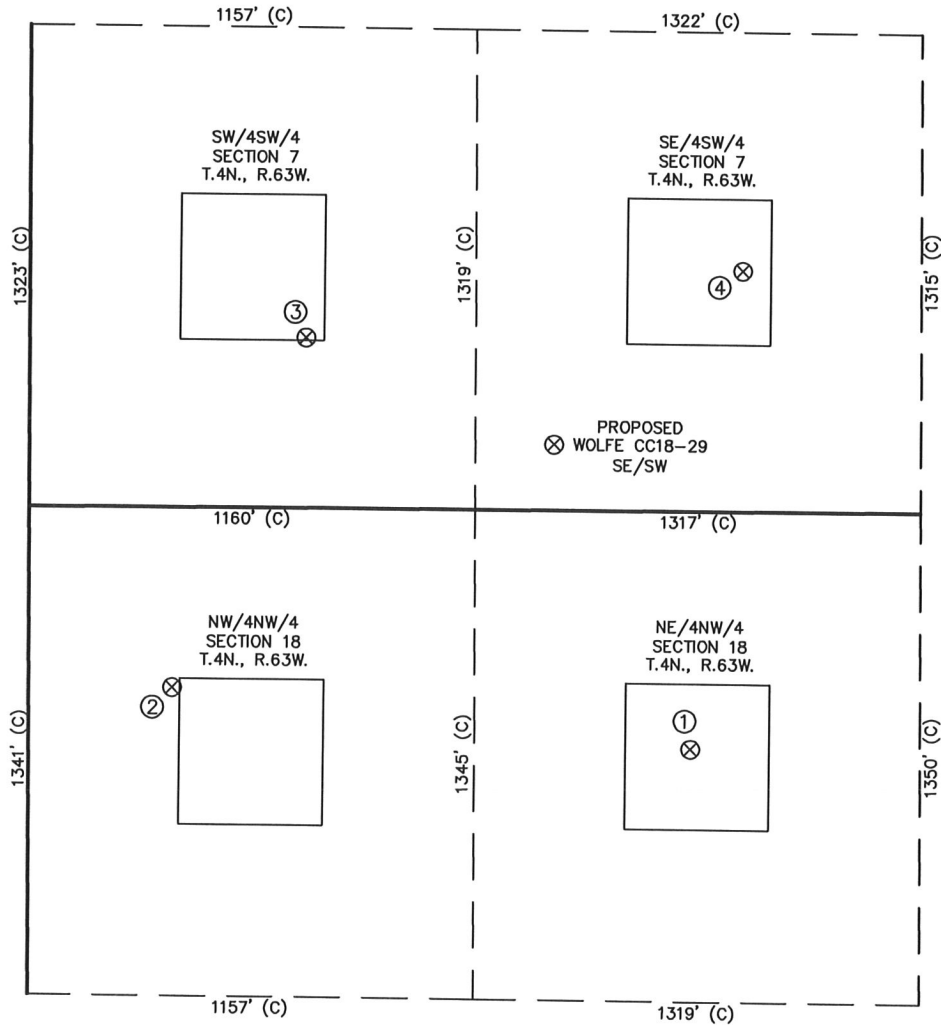
JOB #: 09086

Completed 10/27/2009

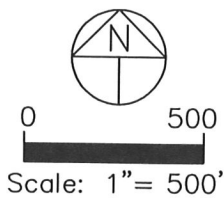


# SITE SKETCH – WOLFE CC18-29

SECTION 7  
TOWNSHIP 4 NORTH  
RANGE 63 WEST



①	②	③	④
LEGGETT 18-2 NE/NW SEC. 18 653' FNL 1835' FWL EL 4629' N 40.31780 W 104.48309 PDOP 2.8	LEGGETT 18-4 NW/NW SEC. 18 496' FNL 397' FWL EL 4625' N 40.31826 W 104.48824 PDOP 2.8	WOLFE CC7-13 SW/SW SEC. 7 467' FSL 768' FWL EL 4627' N 40.32090 W 104.48690 PDOP 2.5	WOLFE CC7-14 SE/SW SEC. 7 661' FSL 1980' FWL EL 4624' N 40.32140 W 104.48255 PDOP 2.4



- NOTES:
- THIS SKETCH DOES NOT REPRESENT A BOUNDARY SURVEY.
  - THE DATUM FOR THE LATITUDES AND LONGITUDES ON THIS SKETCH IS NAD83.