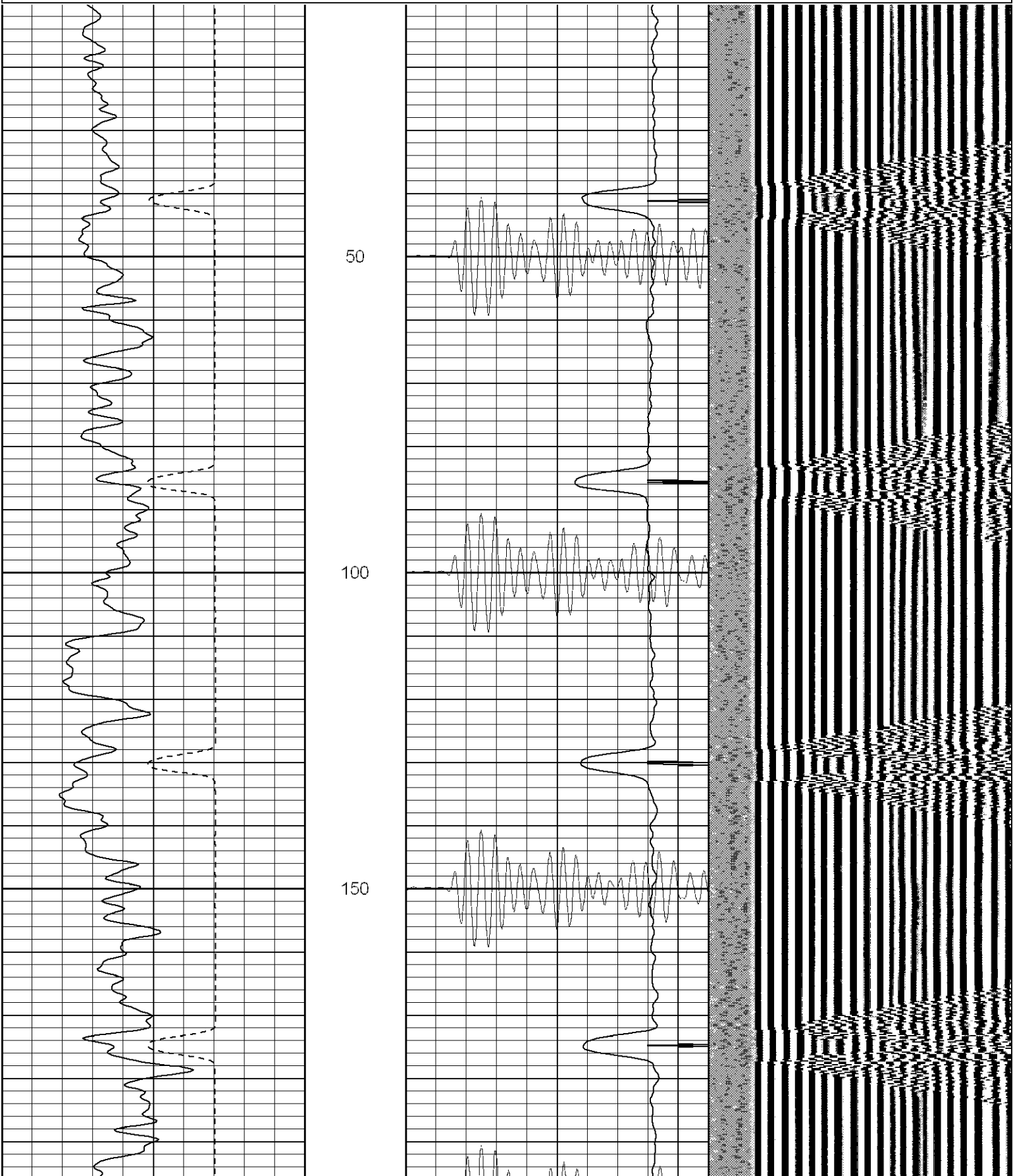
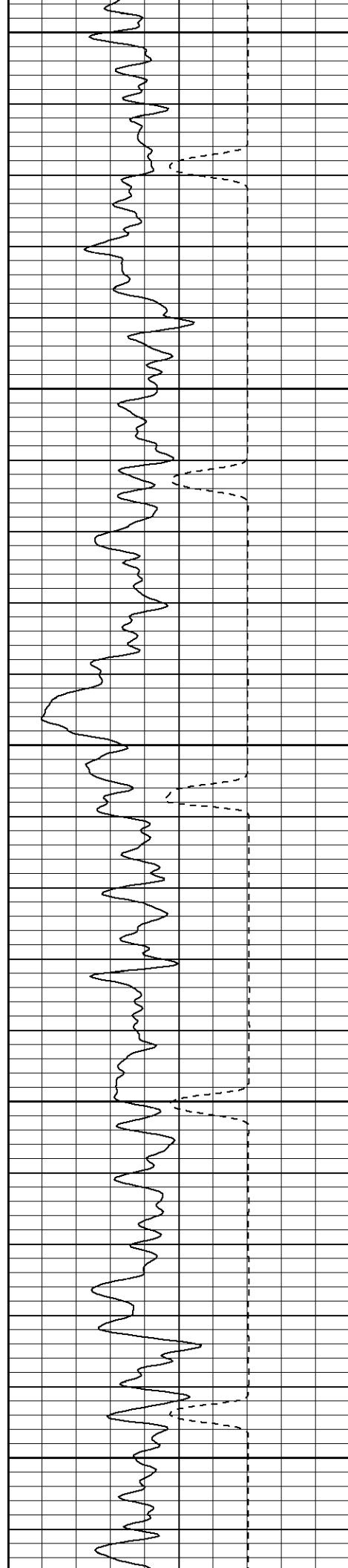


Database File: ac081272507b.db
Dataset Pathname: pass2.2
Presentation Format: cblrt
Dataset Creation: Wed Jul 25 12:36:52 2007 by Calc Open-Cased 070508
Charted by: Depth in Feet scaled 1:240

0	GR (GAPI)	200	0	AMP3 (mV)	100	200	Variable Density	1200
400	TT3 (usec)	200	18	CCL	-2			
			200	CBL5	1200			





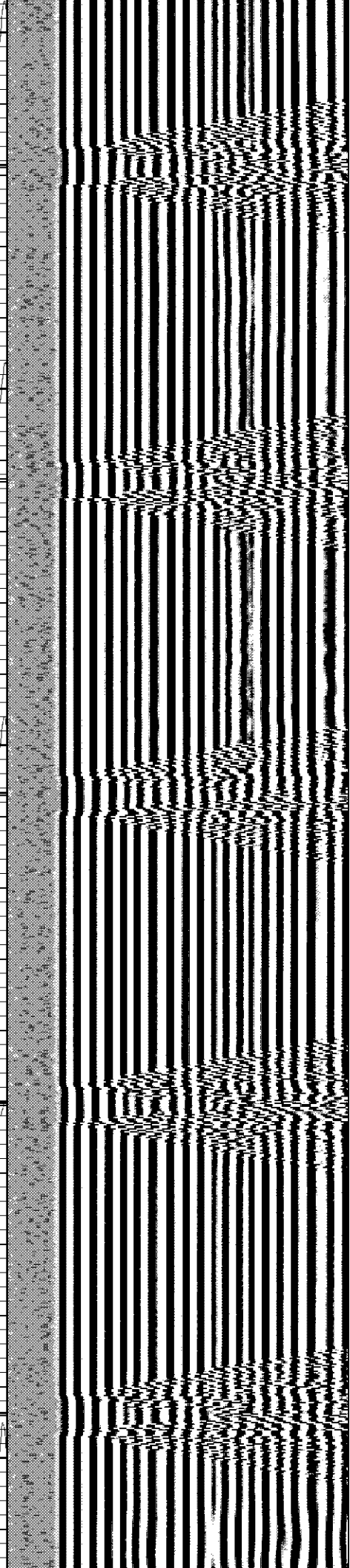
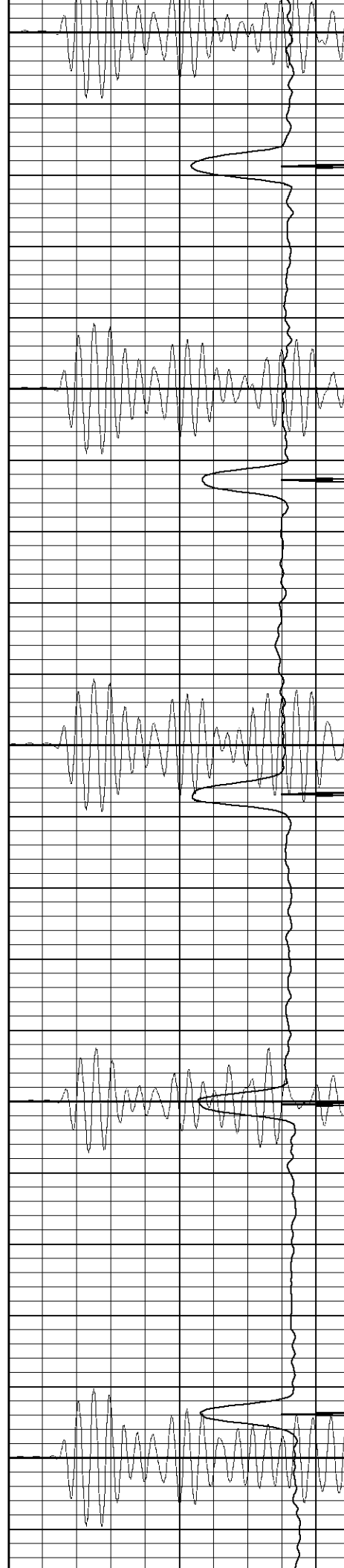
200

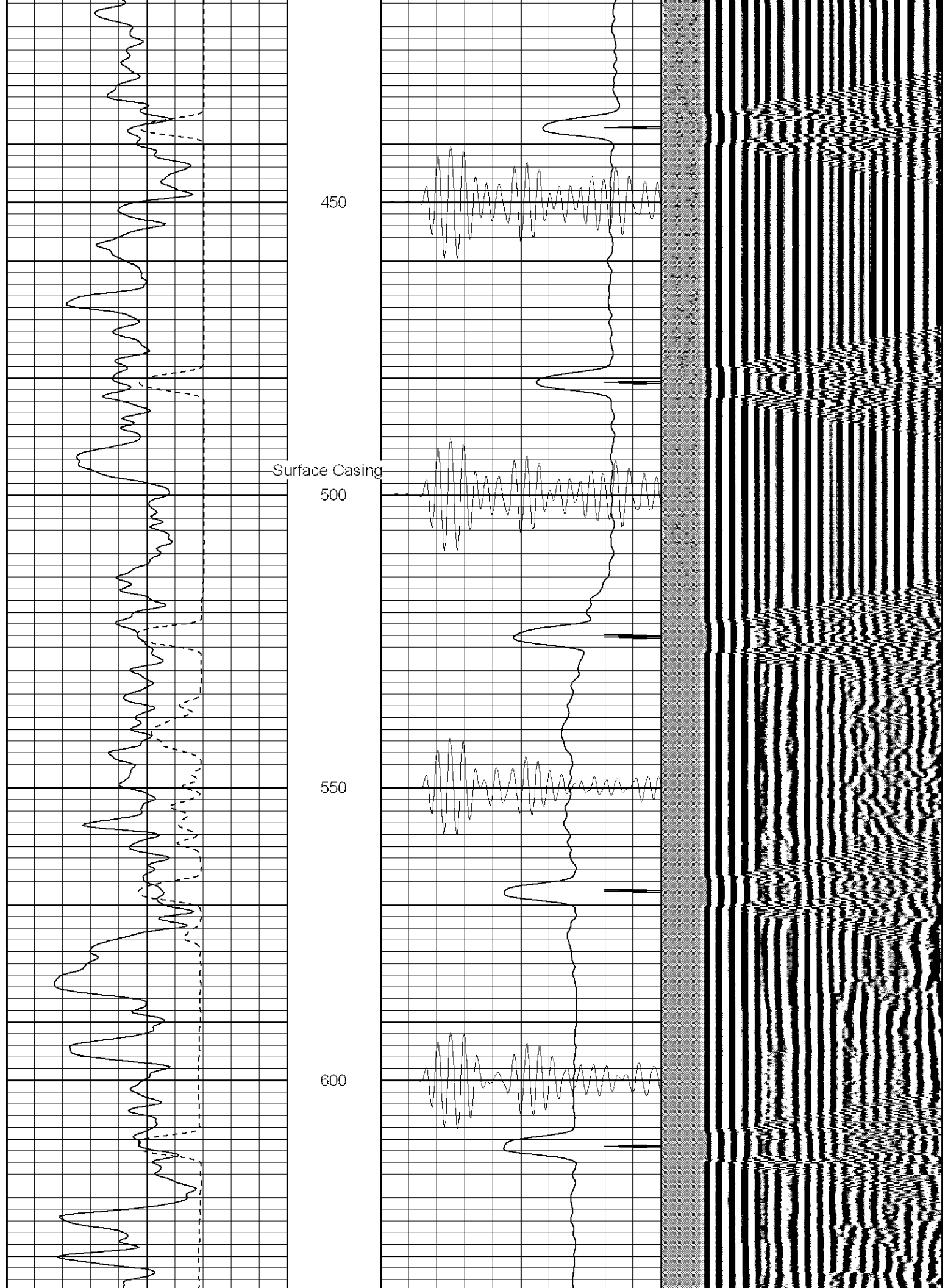
250

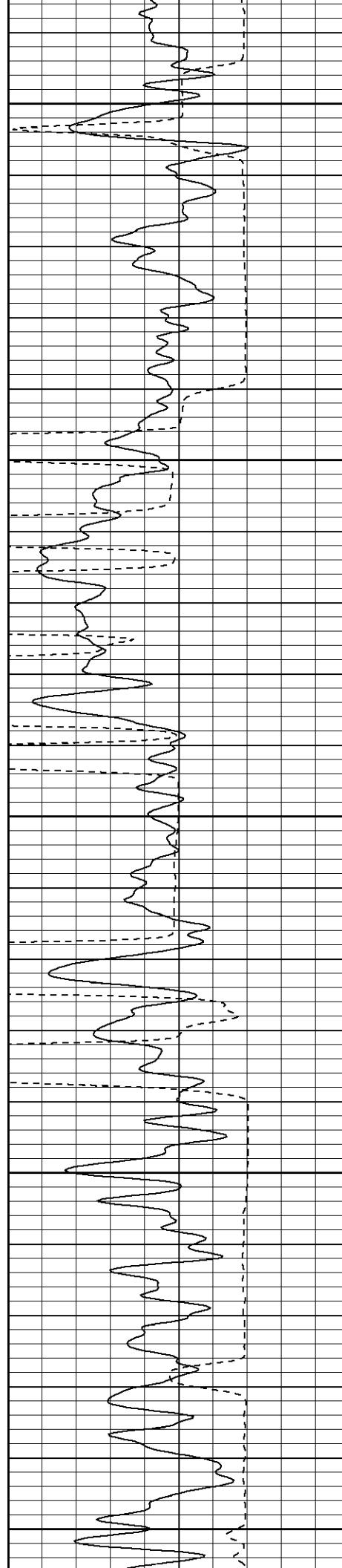
300

350

400







Estimated Top of Cement

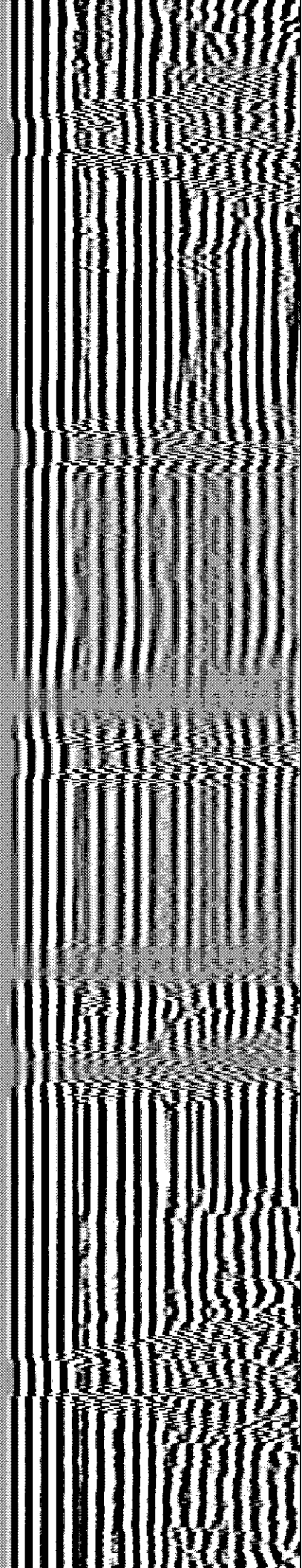
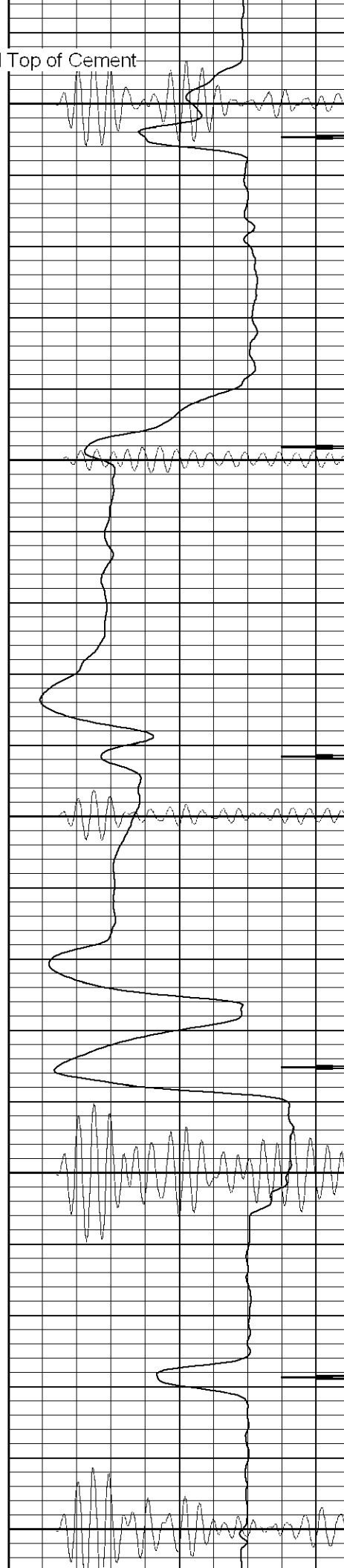
650

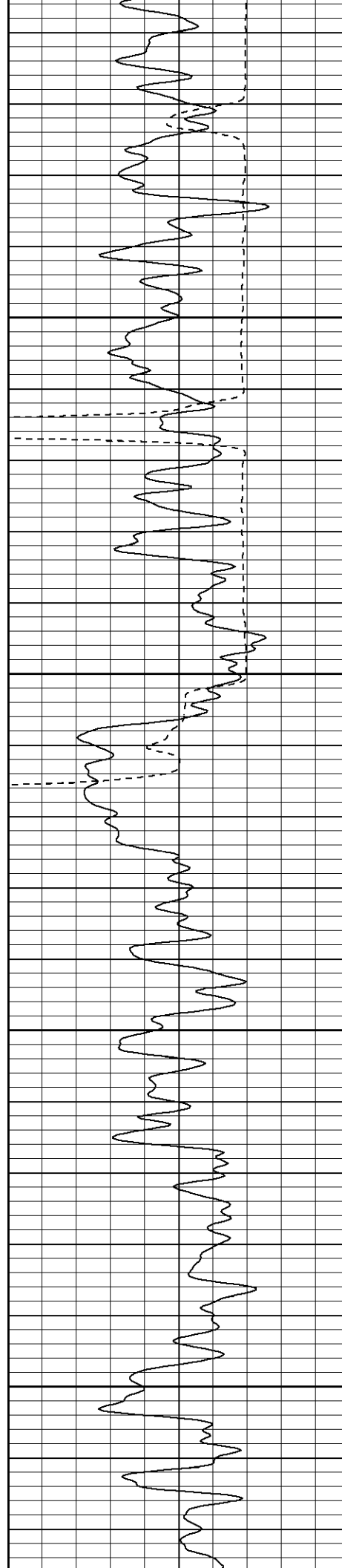
700

750

800

850



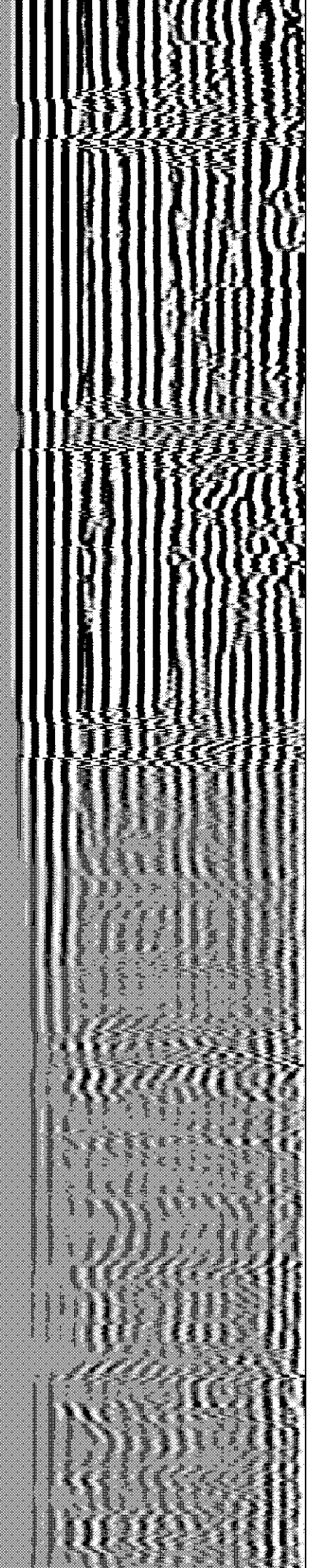
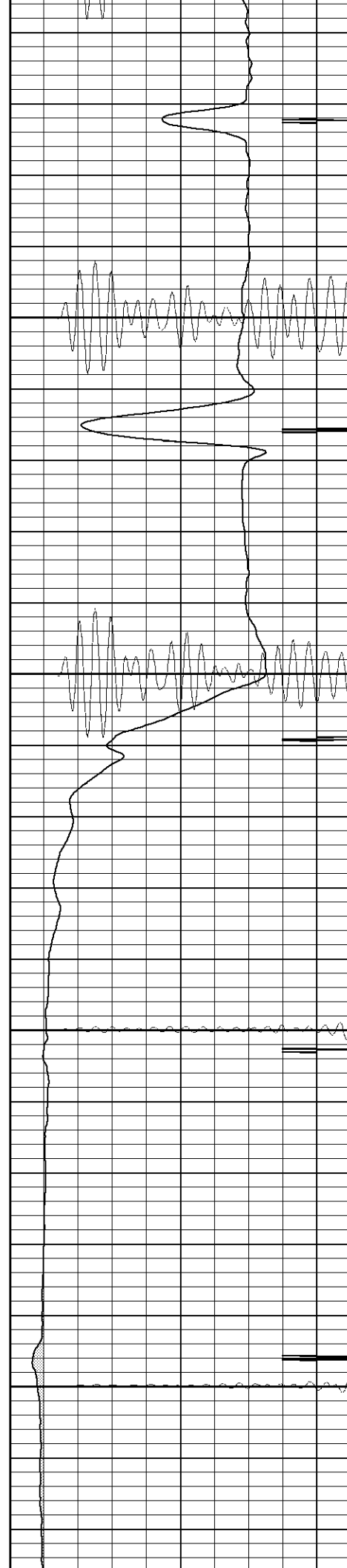


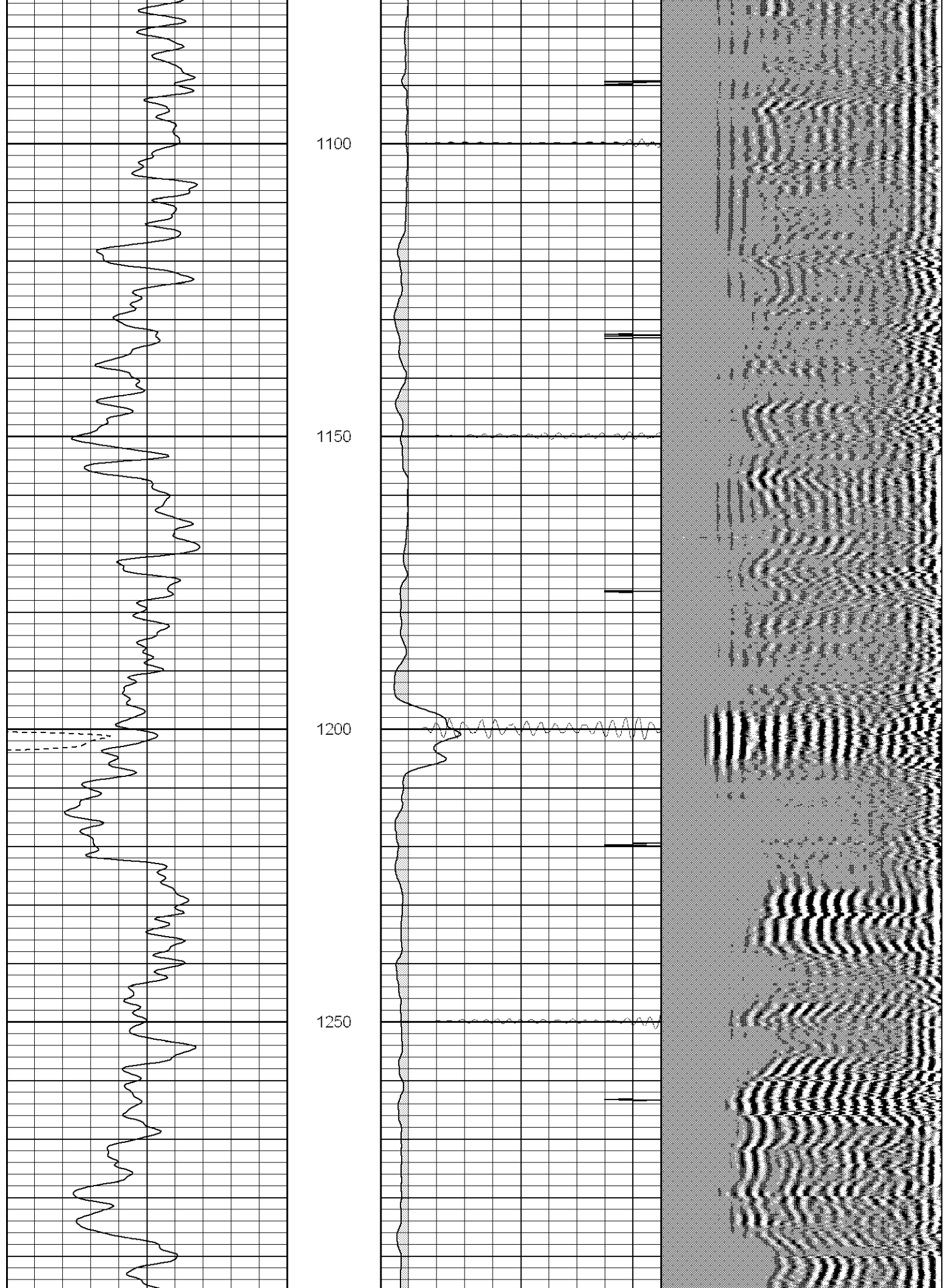
900

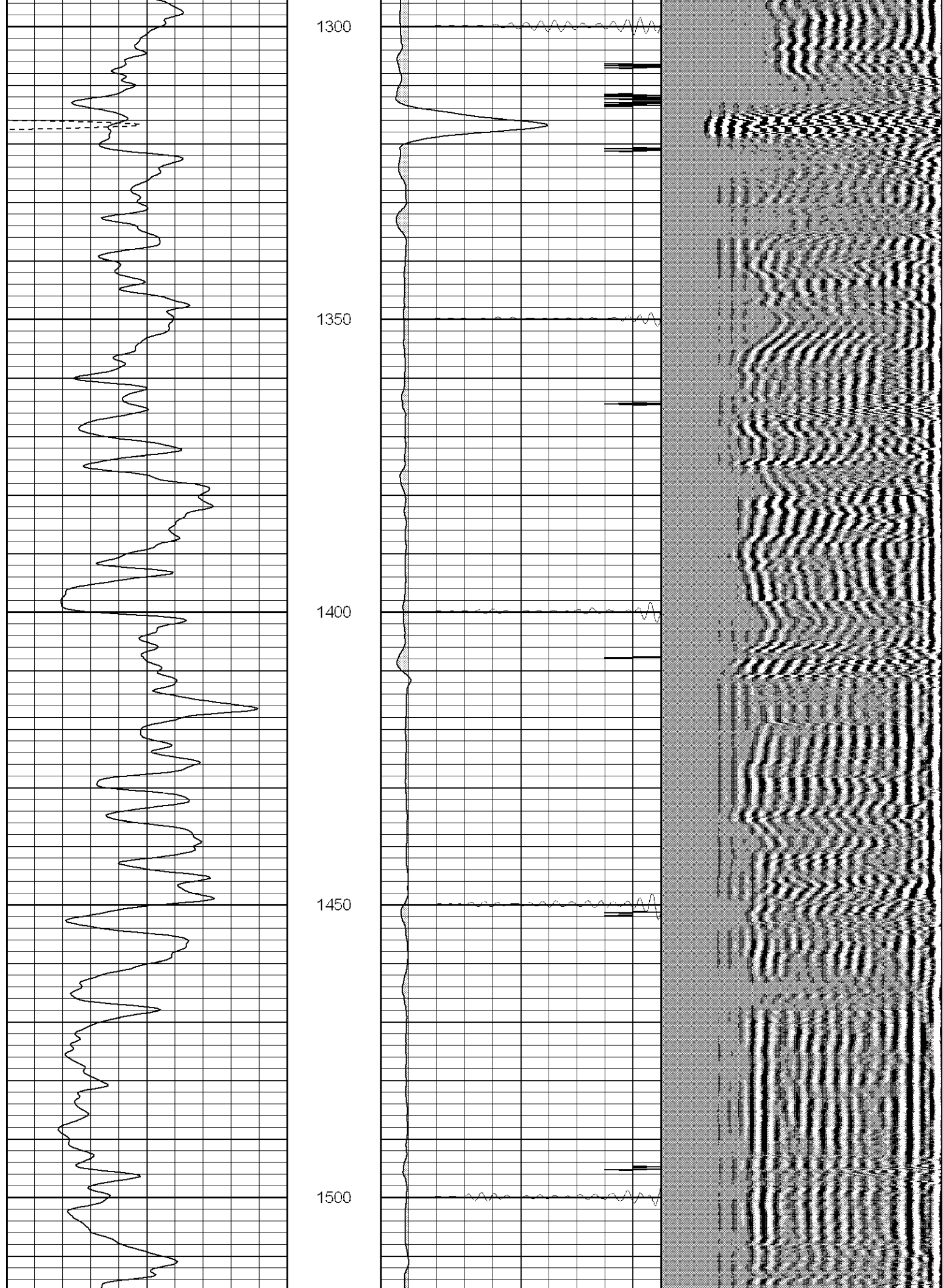
950

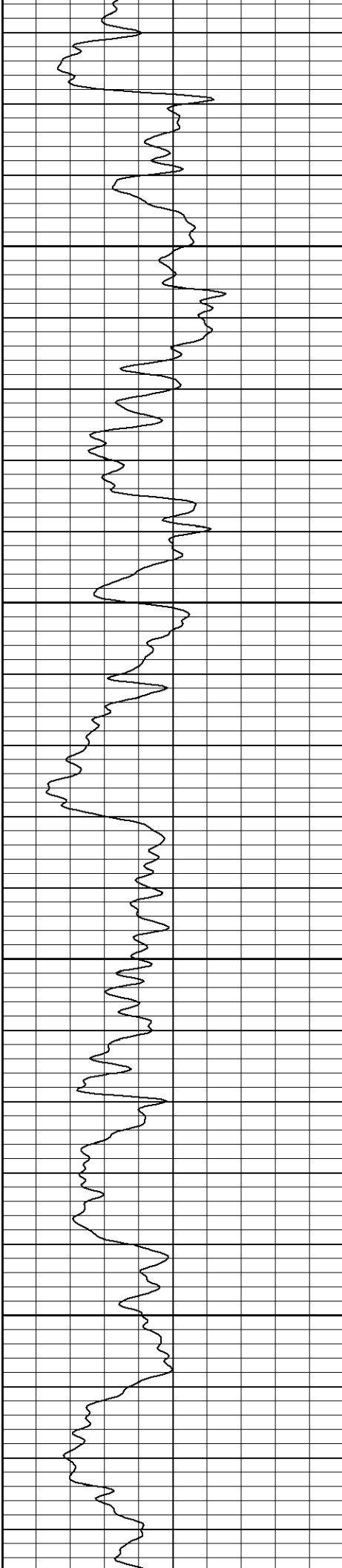
1000

1050







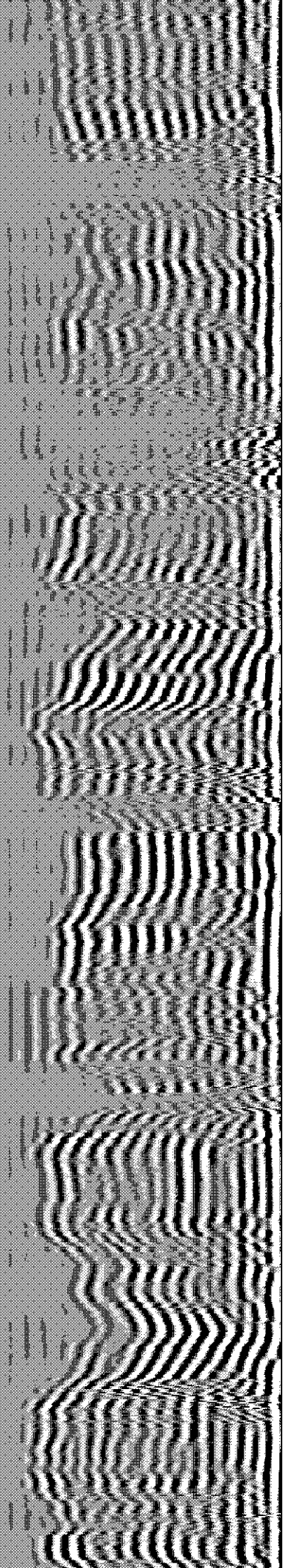
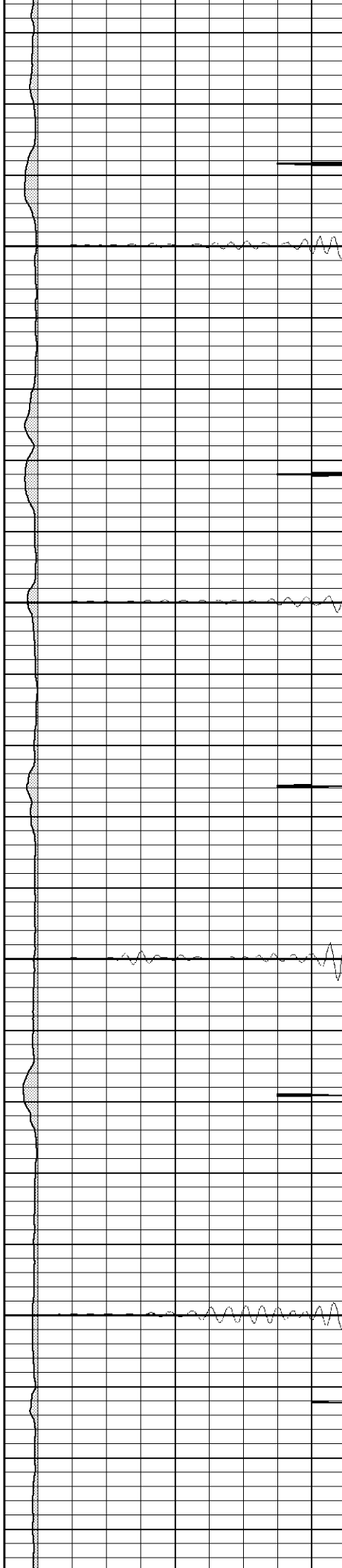


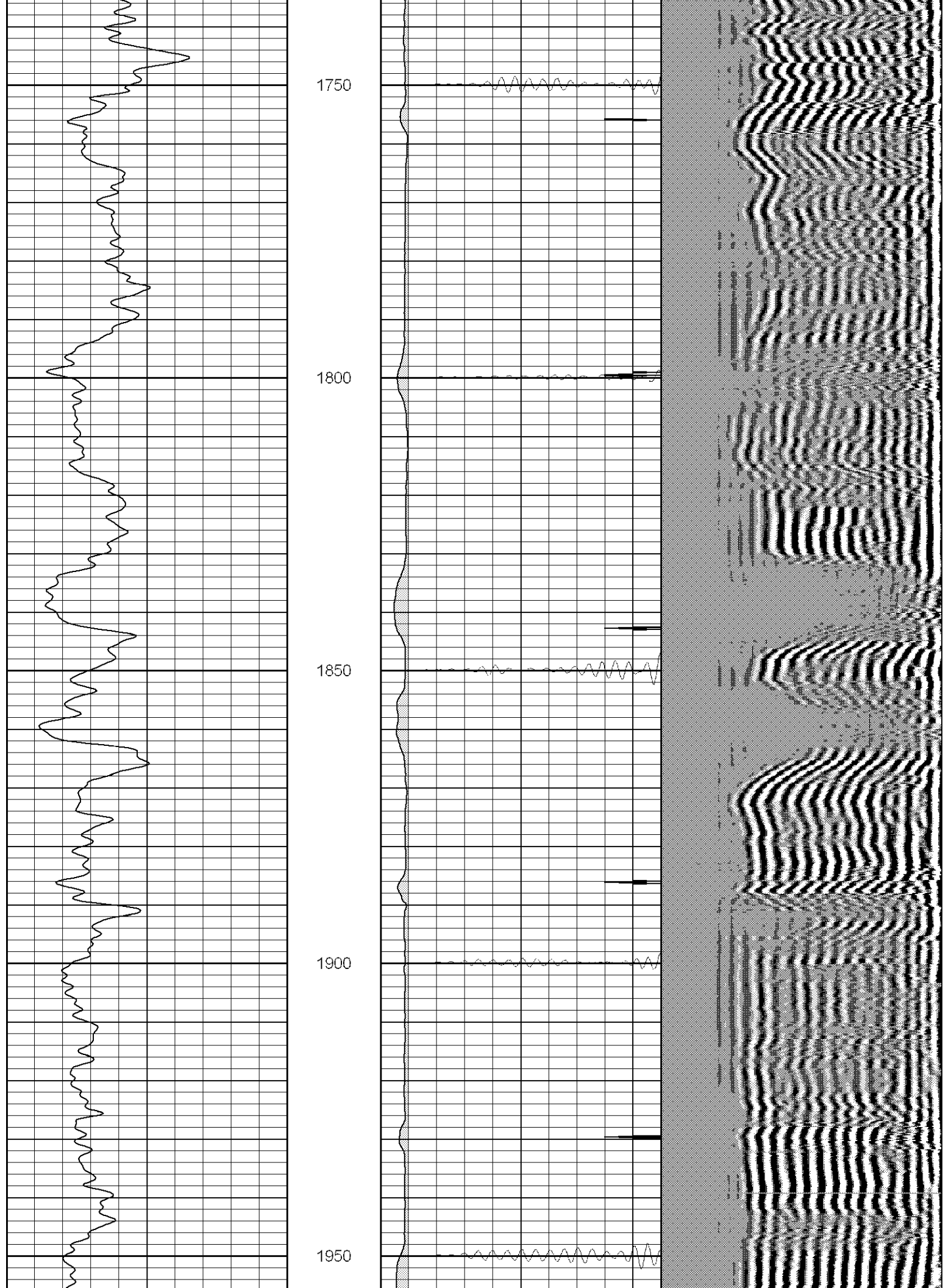
1550

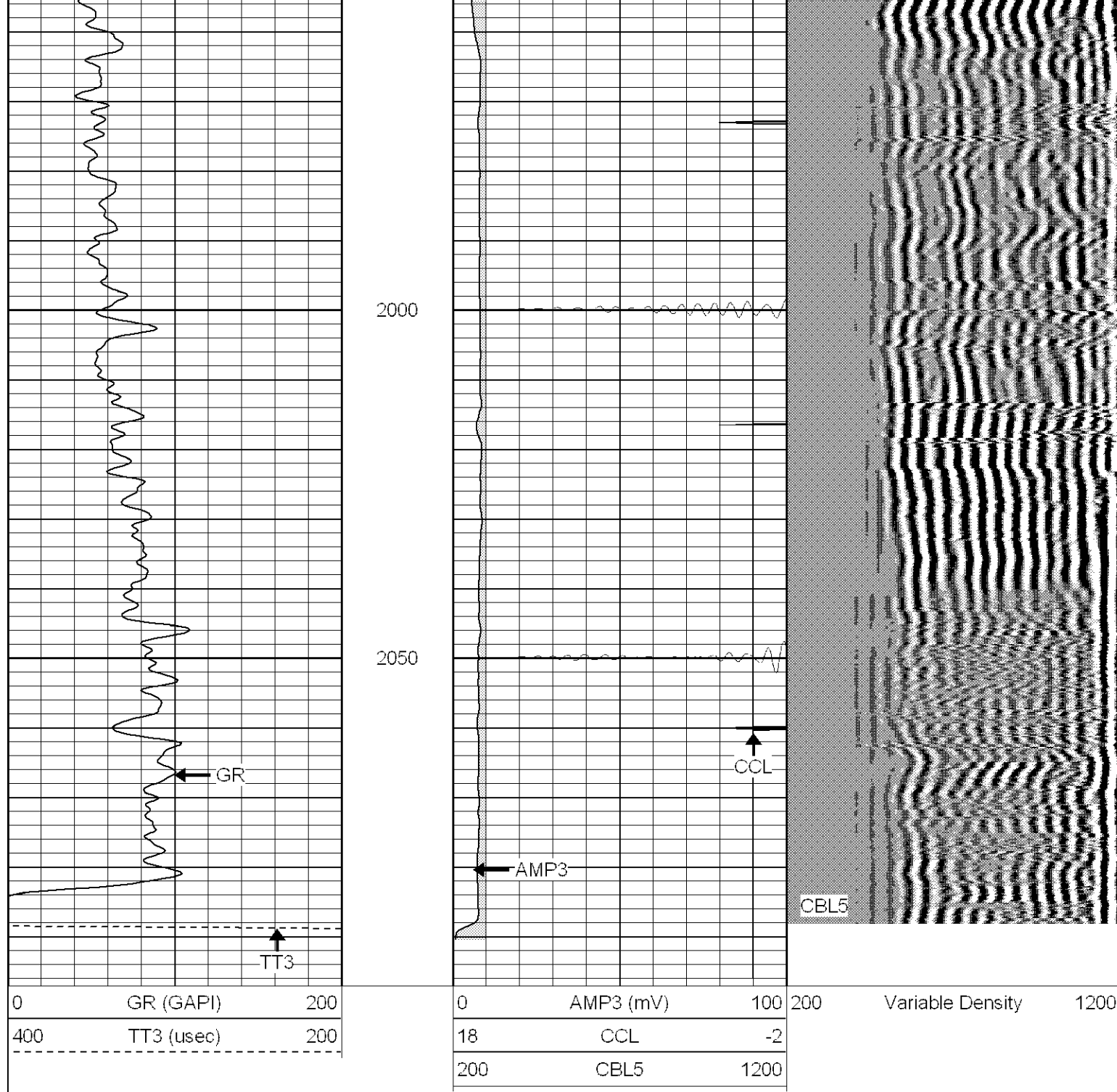
1600

1650

1700







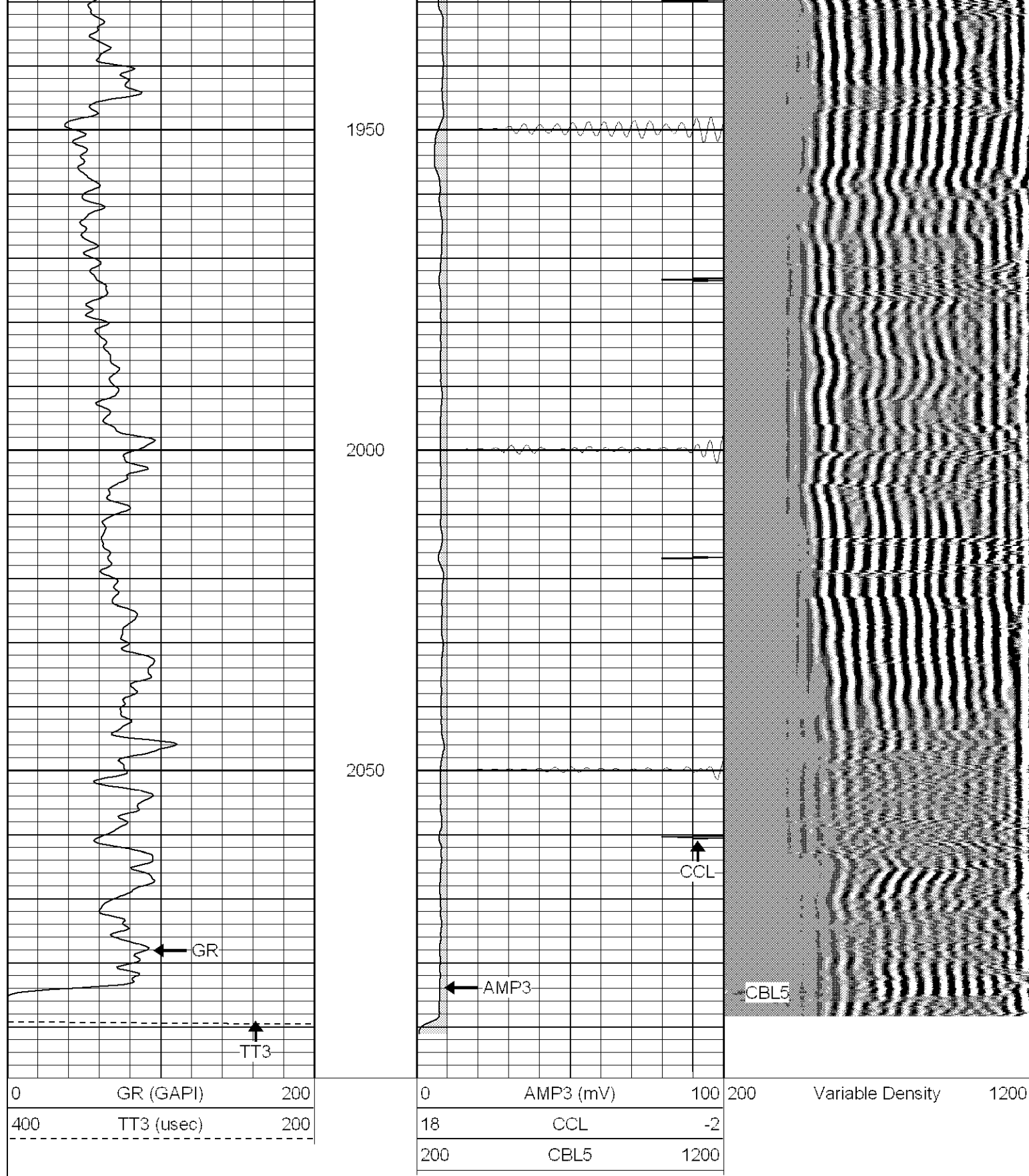
SUPERIOR

Black Lick, Pa.
Mercer, Pa.
Wooster, Oh.
Cleveland, Ok.
Trinidad, Co.

Repeat Section (0PSI)

Database File: ac081272507b.db
Dataset Pathname: pass1
Presentation Format: cblrt
Dataset Creation: Wed Jul 25 11:04:43 2007 by Log Open-Cased 070508
Charted by: Depth in Feet scaled 1:240

0	GR (GAPI)	200	0	AMP3 (mV)	100	200	Variable Density	1200
400	TT3 (usec)	200	18	CCL	-2			
			200	CBL5	1200			



Calibration Report

Database File: ac081272507b.db
 Dataset Pathname: pass1
 Dataset Creation: Wed Jul 25 11:04:43 2007 by Log Open-Cased 070508

Cement Bond Log Calibration Report

Serial Number: Titan6
 Tool Model: T6

Dataset:	ac081272507b.db: field/well/run1/pass1
Total Length:	15.66 ft
Total Weight:	180.00 lb
O.D.	2.75 in