

Patterson

**CEMENT BOND
GAMMA RAY
LOG**

Company		XTO Energy, Inc.	
Well		Hill Ranch 36-04	
Field		Purgatoire River	
County		Las Animas	
State		CO	
Location:		API # : 05 071 08802 00	
SEC 36 TWP 34S RGE 67W		1218' FNL & 892' FWL	
Permanent Datum		Ground Level	Elevation 7850'
Log Measured From		Ground Level	
Drilling Measured From		Ground Level	
Other Services		Elevation K.B. ----- D.F. ----- G.L. 7850'	
Date	9-15-06		
Run Number	One		
Depth Driller	2500'		
Depth Logger	2284'		
Bottom Logged Interval	2282'		
Top Log Interval	Surface		
Open Hole Size	7 7/8"		
Type Fluid	Water		
Density / Viscosity	///		
Max. Recorded Temp.	114F		
Estimated Cement Top	37'		
Time Well Ready	Portable Mast		
Time Logger on Bottom	11:25AM		
Equipment Number	T875		
Location	Trinidad		
Recorded By	E. Ray		
Witnessed By			
Borehole Record		Tubing Record	
Run Number	Bit	From	To
		Size	Weight
		From	To
Casing Record	Size	Wgt/Ft	Top
Surface String	8 5/8"		00
Prot. String			
Production String	5 1/2"		00
Liner			N/A

<<< Fold Here >>>

All interpretations are opinions based on inferences from electrical or other measurements and we cannot and do not guarantee the accuracy or correctness of any interpretation, and we shall not, except in the case of gross or willful negligence on our part, be liable or responsible for any loss, costs, damages, or expenses incurred or sustained by anyone resulting from any interpretation made by any of our officers, agents or employees. These interpretations are also subject to our general terms and conditions set out in our current Price Schedule.

Comments

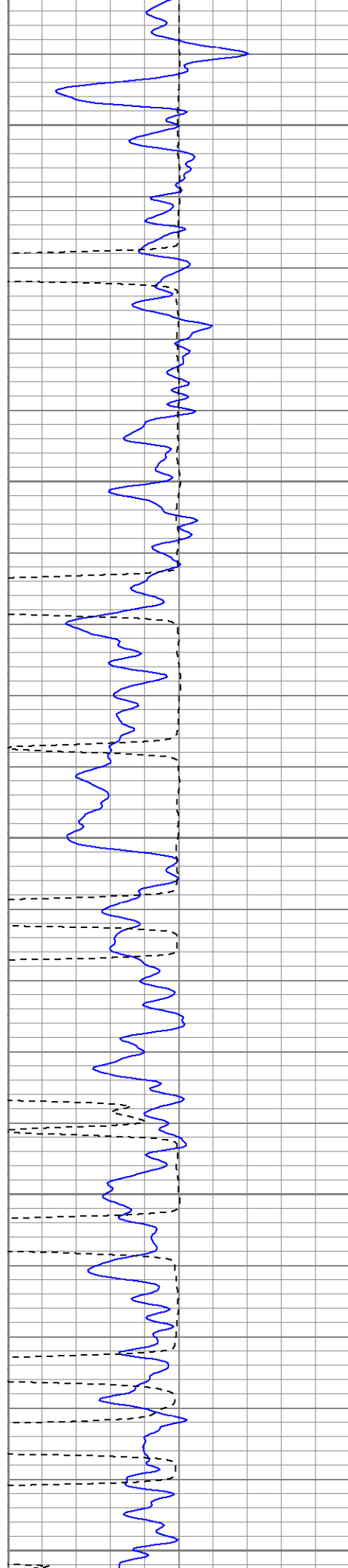
Up Lorencito Canyon 5.4 Miles Turn Right (XTO Road),
Go 2.7 Miles and Turn Right to Location (Third Right)

Database File: hillranch360491506b.db

Dataset Pathname: pass2

Presentation Format: cblrt

Dataset Creation: Fri Sep 15 11:20:45 2006 by Les Oren Case# 060407



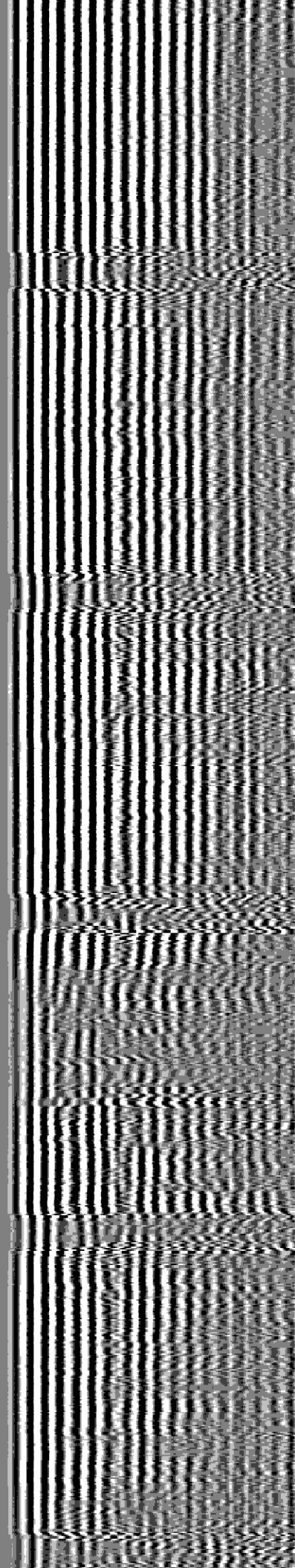
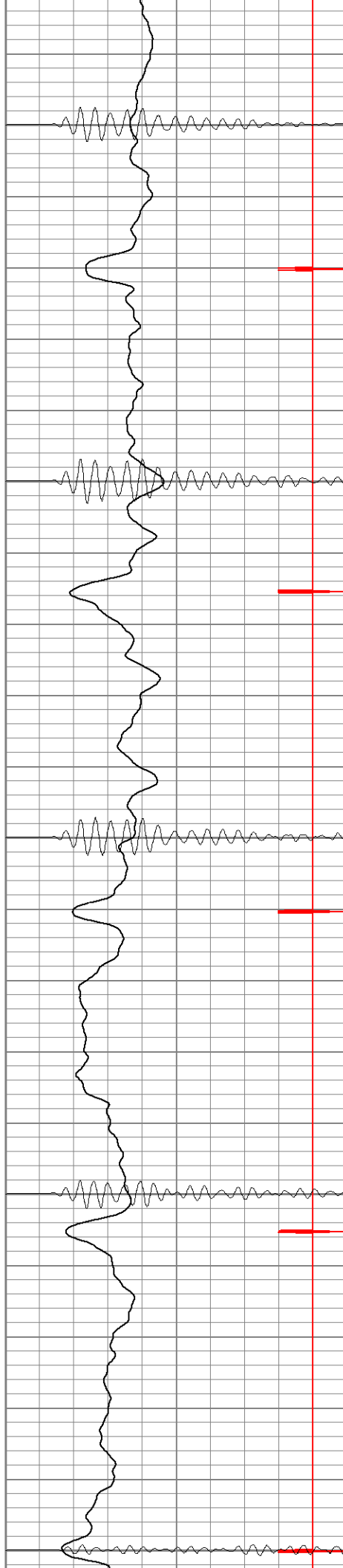
200

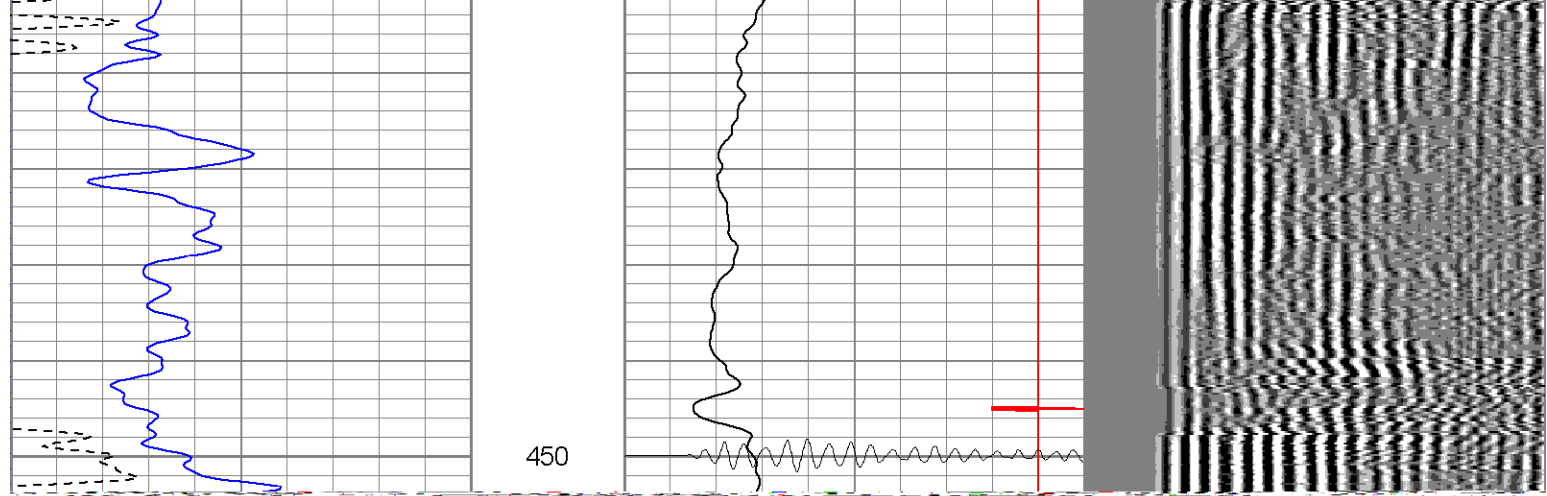
250

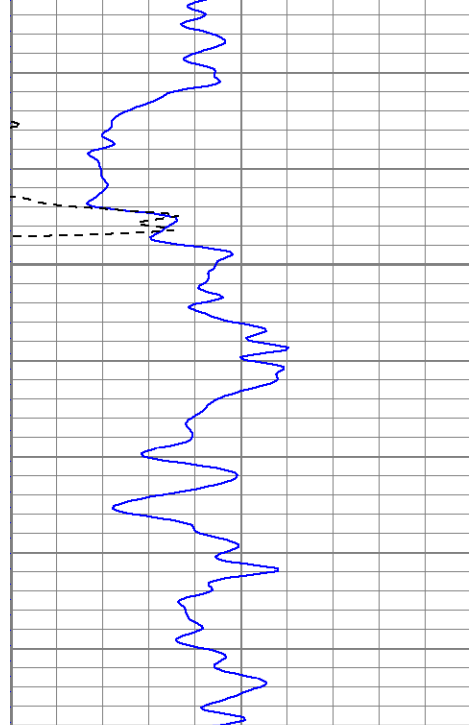
300

350

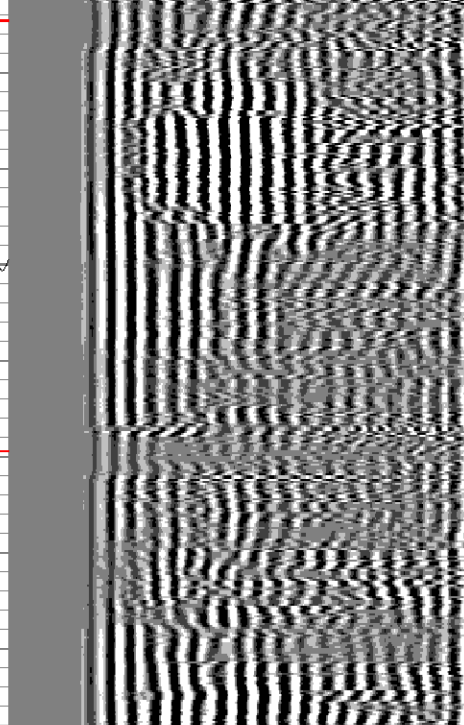
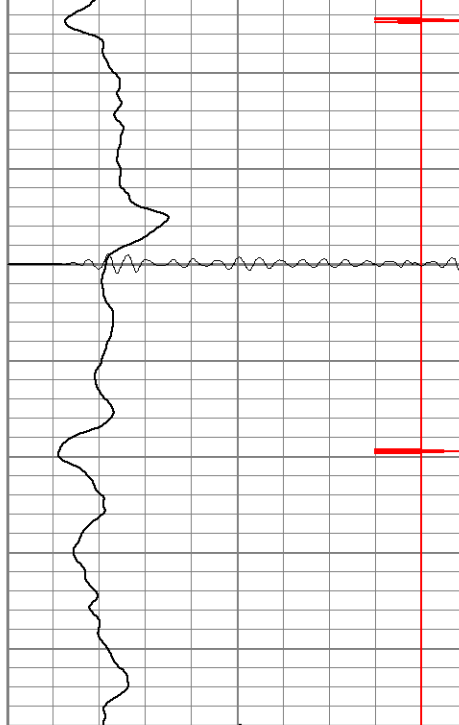
400

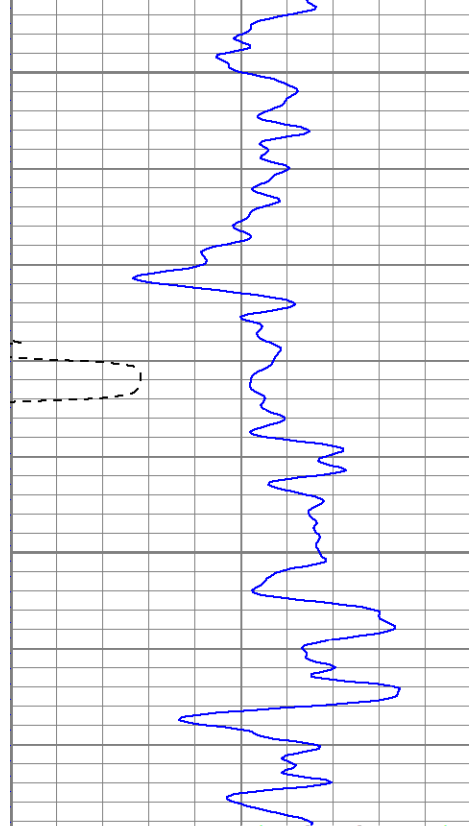






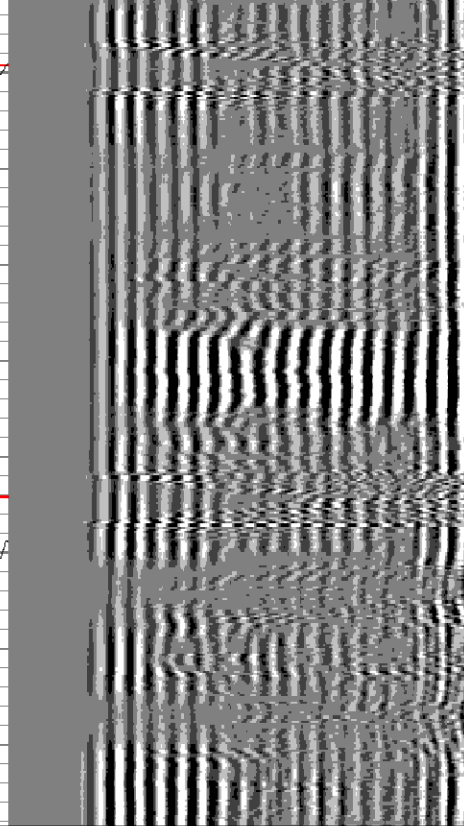
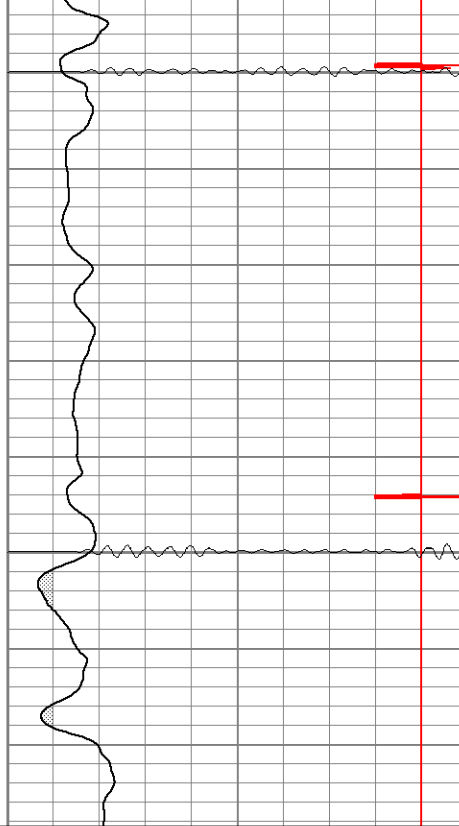
650

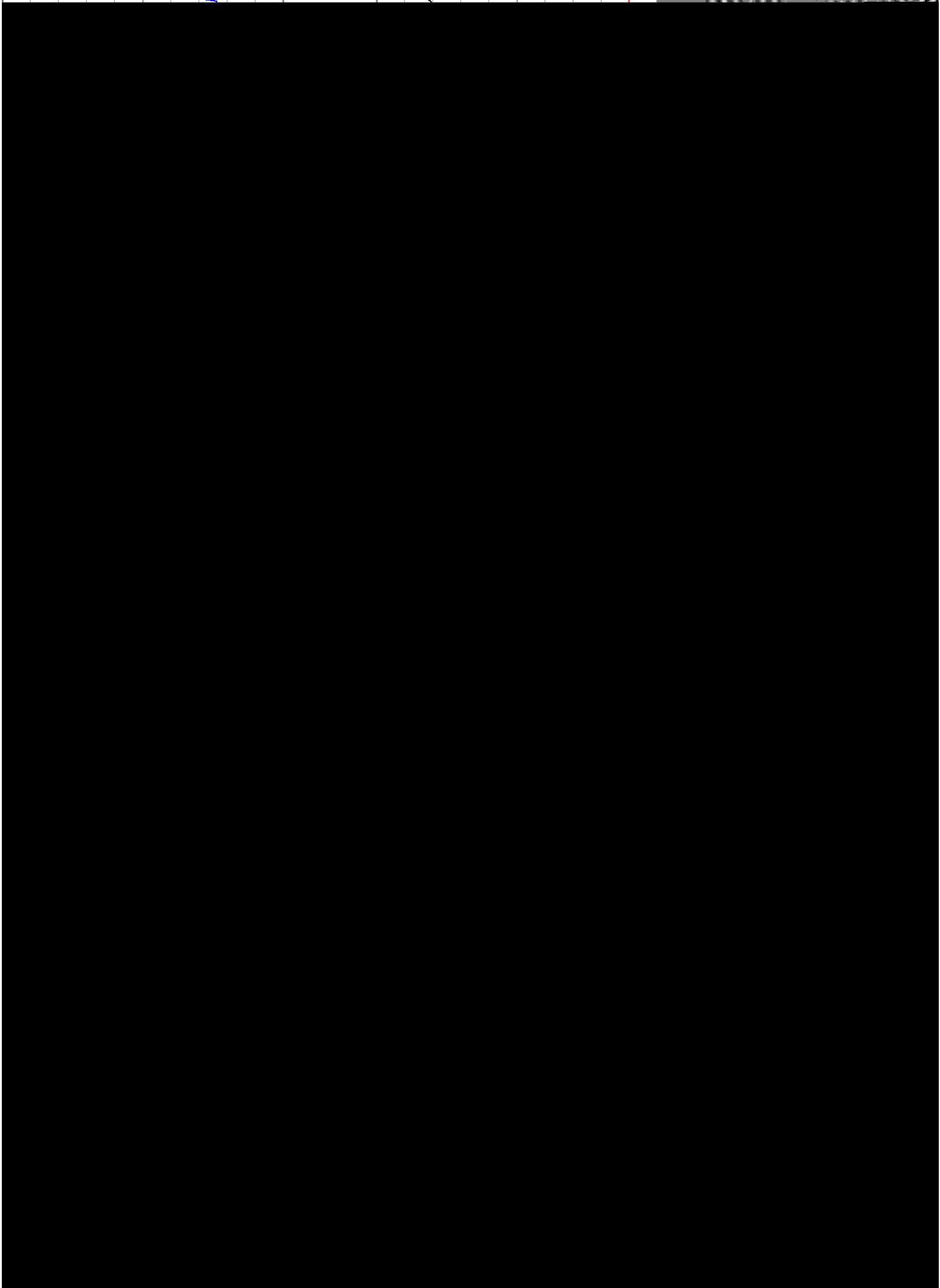


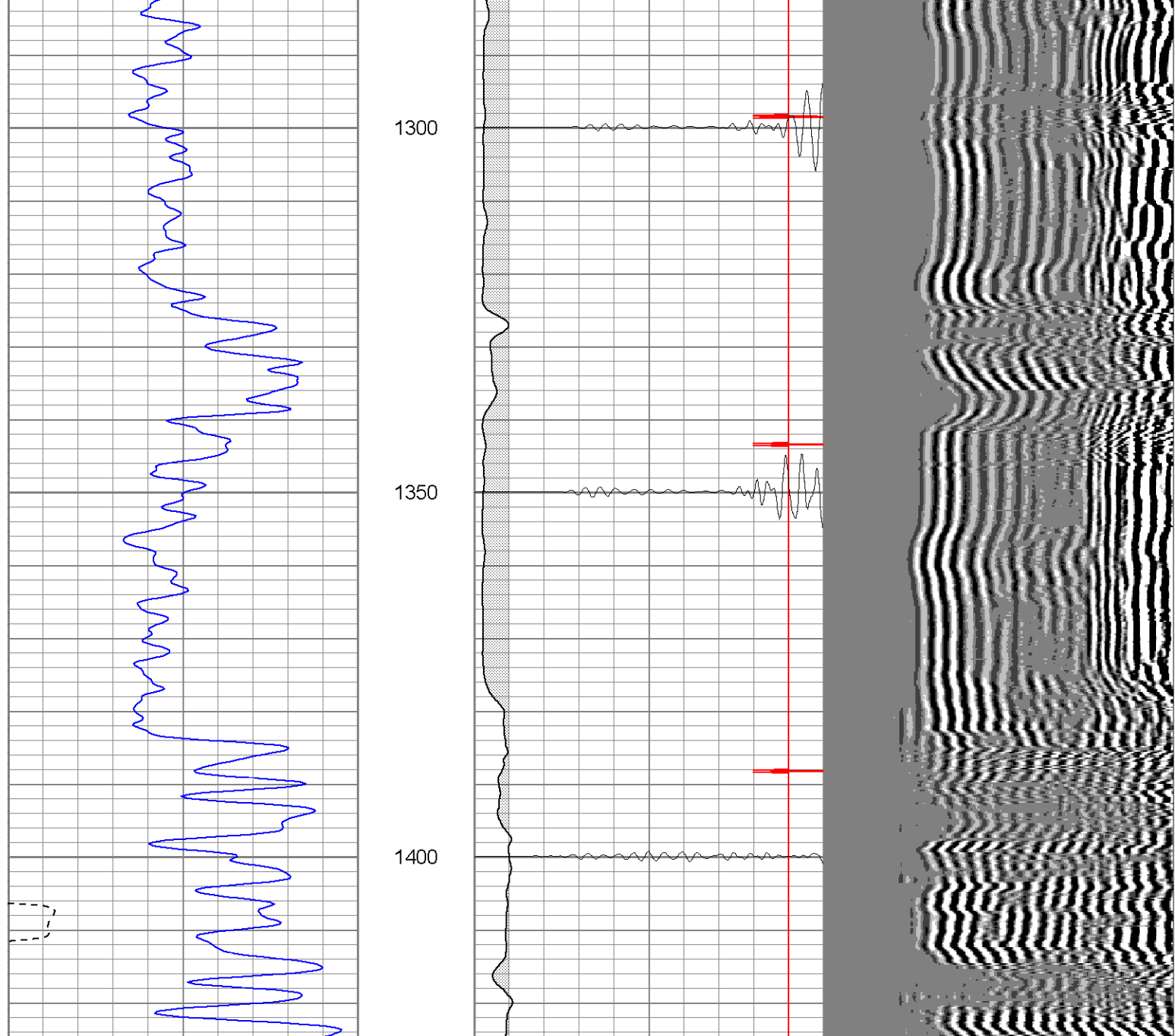


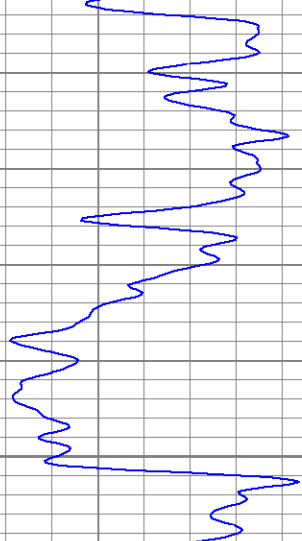
850

900

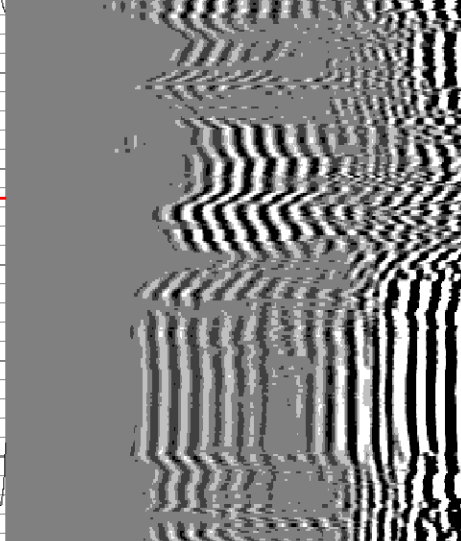


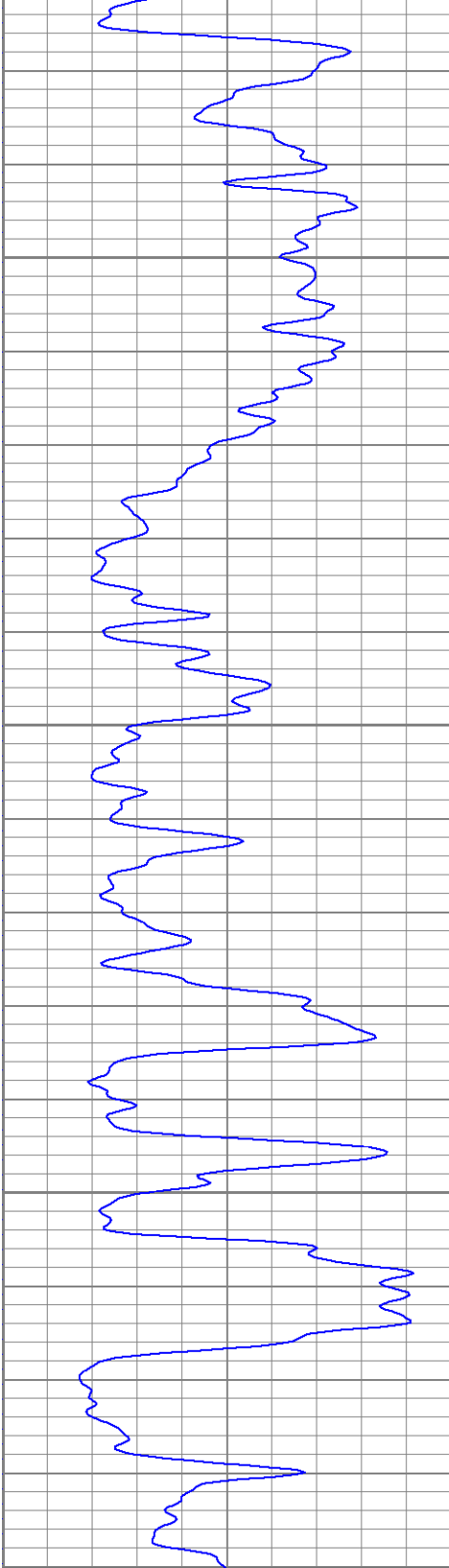






1550

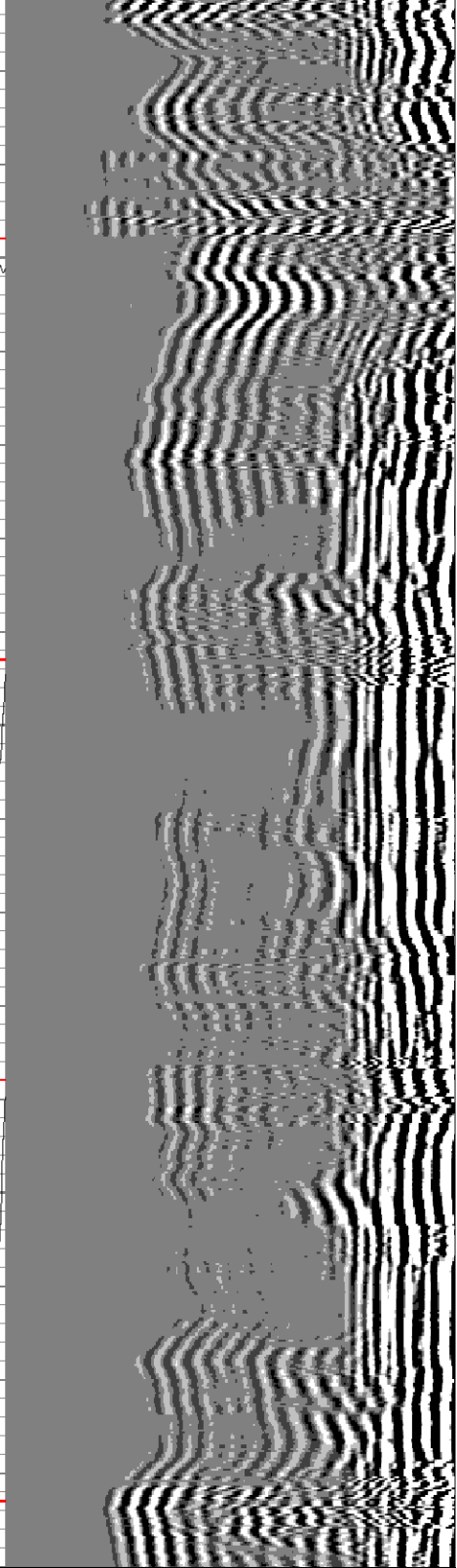


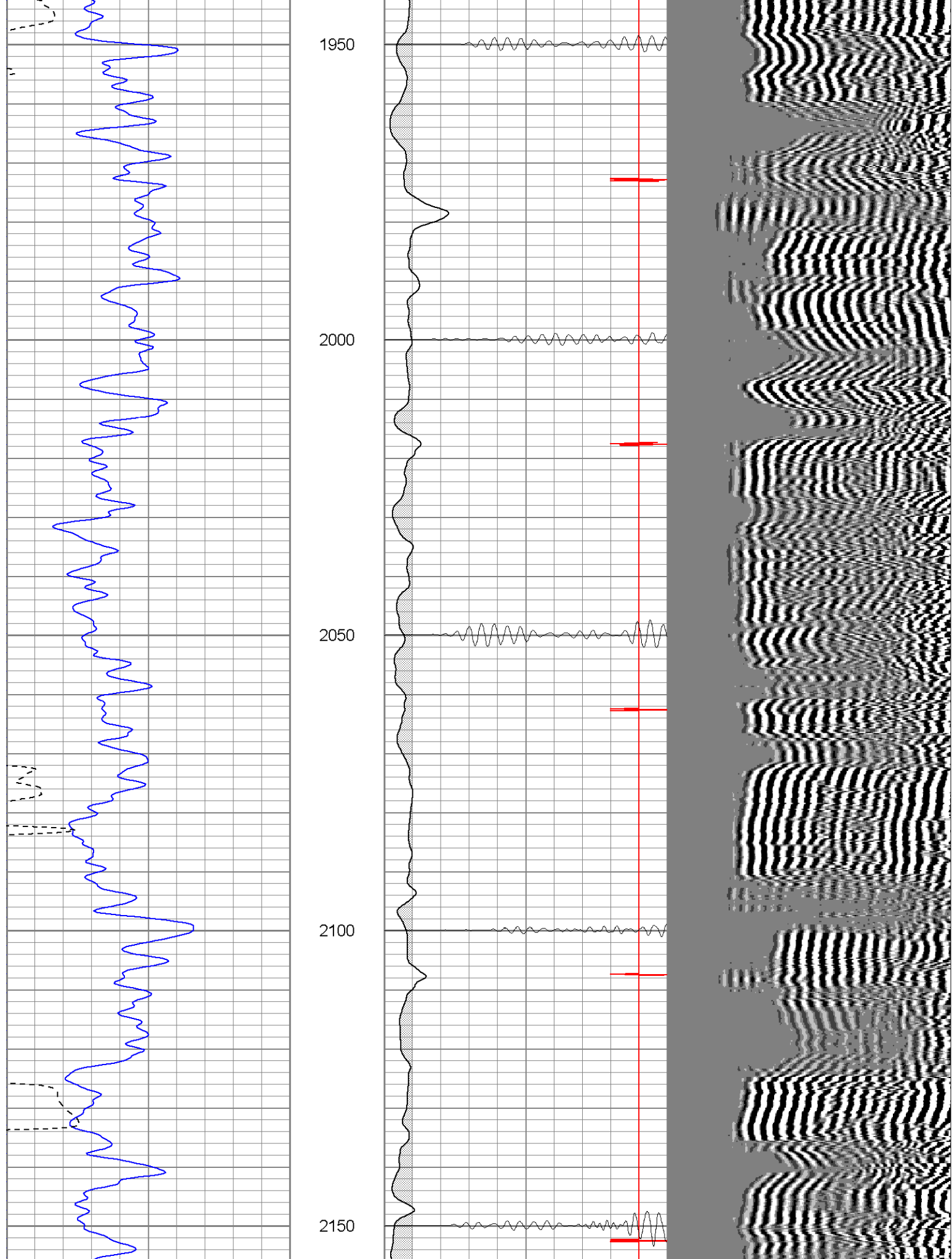


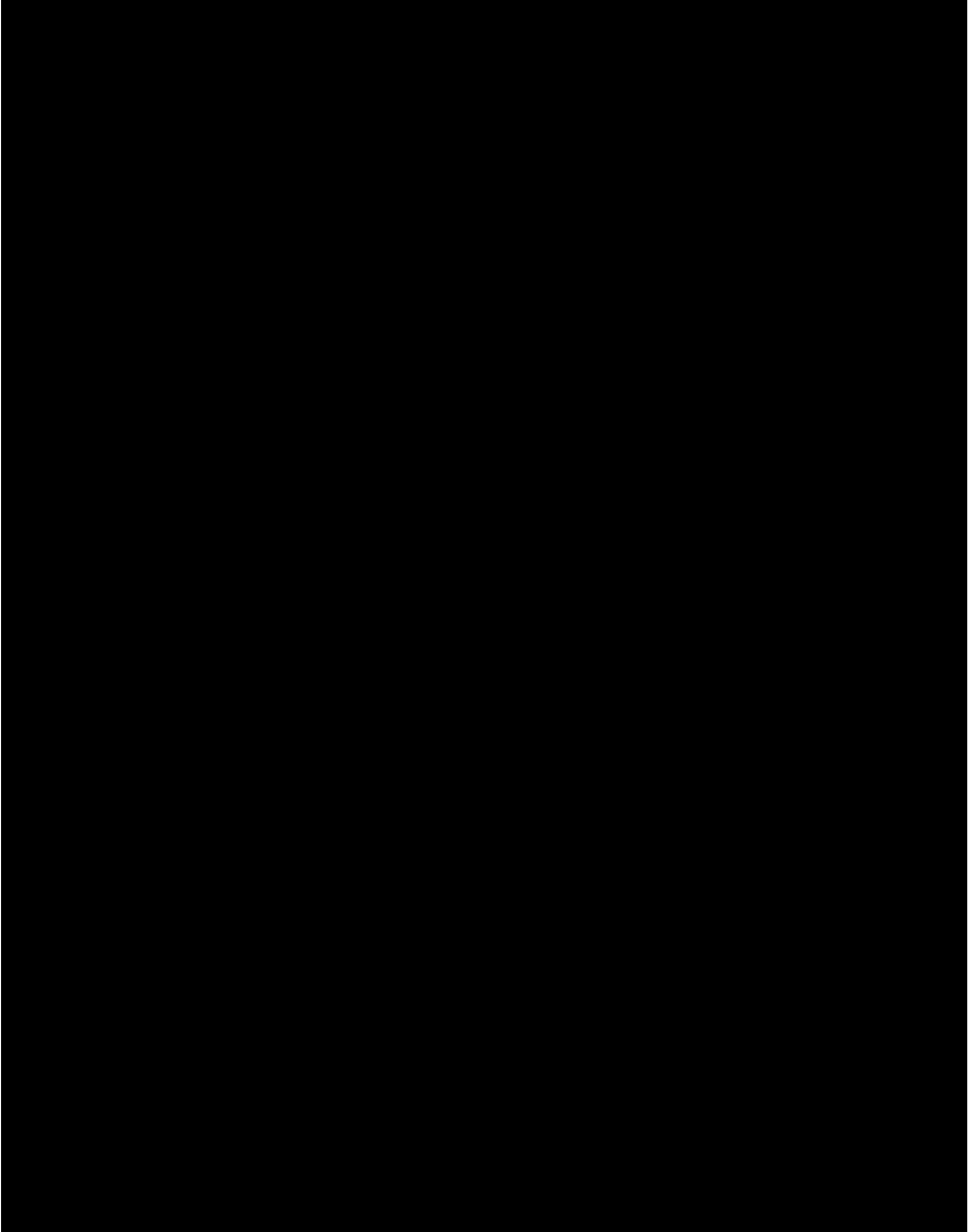
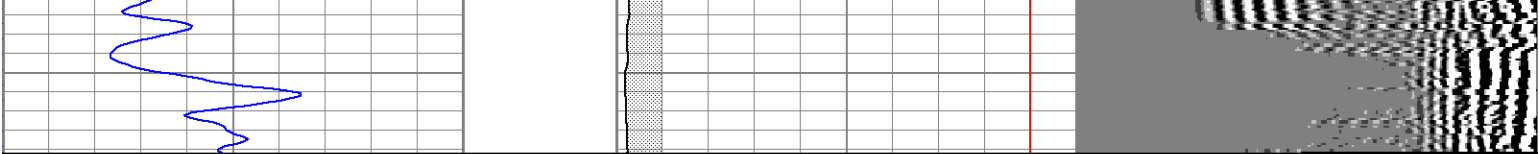
1750

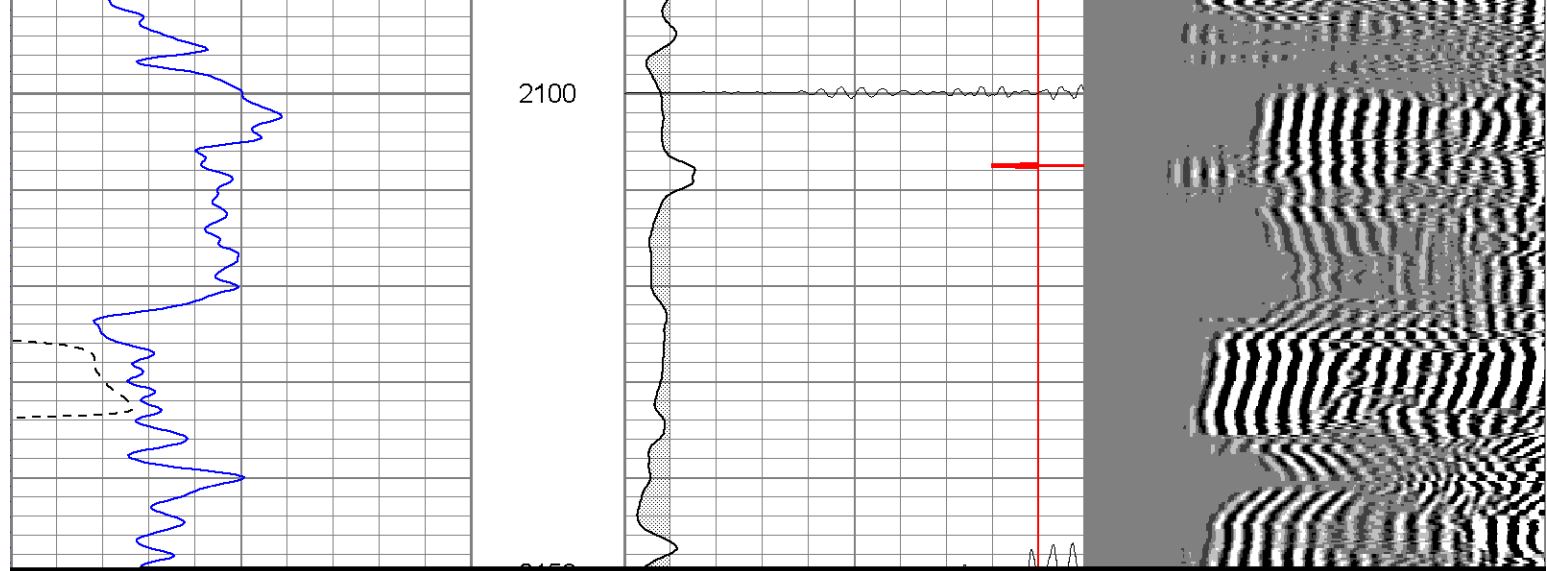
1800

1850









Calibration Report

Database File: hillranch360491506b.db
 Dataset Pathname: pass1
 Dataset Creation: Fri Sep 15 11:22:59 2006 by Log Open-Cased 060407

Gamma Ray Calibration Report

Serial Number: Titan2.75
 Tool Model: 2.75
 Performed: Wed Sep 06 09:59:59 2006

Calibrator Value: 200.0 GAPI

Background Reading: 40.0 cps
 Calibrator Reading: 240.0 cps

Sensitivity: 1.1000 GAPI/cps

Cement Bond Log Calibration Report

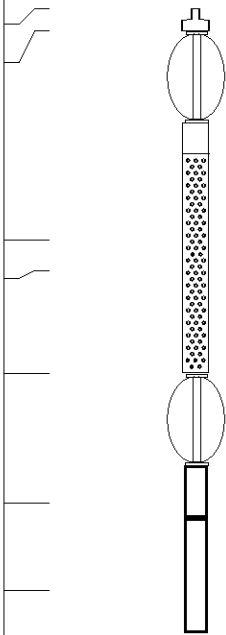
Serial Number: Titan4
 Tool Model: 4
 Performed: Thu Sep 07 10:29:39 2006

Depth: 1054.62 ft
 Casing Diameter: 5.5 in

3' Spacing 5' Spacing

Signal Zero: 0 1 mV
 Calibrated Amplitude: 85 85 mV
 Reading at Signal Zero: 0.00161133 0.0143555 V
 Reading in Free Pipe: 1.15 1.65081 V

Gain: 74.0168 51.3306
 Offset: 1 0.263125

Sensor	Offset (ft)	Schematic	Description	Len (ft)	OD (in)	Wt (lb)
CHD	20.38		CHD-None (0)	0.75	1.50	5.00
CENT	19.63		CENT-X (2)	3.00	1.69	25.00
WVF5	12.82		CBL-4 (Titan4)	8.15	2.25	110.00
WVF3	11.82					
CENT	8.48		CENT-X (1)	3.00	1.69	25.00
CCL	4.27		CCL-2.75 (Titan2.75)	1.71	2.75	15.00
GR	1.42		GR-2.75 (Titan2.75) Two Point	3.77	2.75	25.00

Dataset: hillranch360491506b.db: field/well/run1/pass1
 Total Length: 20.38 ft
 Total Weight: 205.00 lb
 O.D. 2.75 in