

Patterson

**DUAL
INDUCTION
LOG**

Company XTO Energy Inc.		Company XTO Energy Inc.	
Well Apache Canyon 18-07		Well Apache Canyon 18-07	
Field Purgatoire River		Field Purgatoire River	
County Las Animas		County Las Animas	
State Colorado		State Colorado	
Location: API # : 05 071 08887 00		Other Services cdl neutron	
SEC 18 TWP 34S RGE 67W		Elevation	
Permanent Datum	Ground Level	Elevation	7684'
Log Measured From	Ground Level	K.B. -----	
Drilling Measured From	Ground Level	D.F. -----	
		G.L. 7684'	
Date	08-09-06		
Run Number	One		
Depth Driller	2220'		
Depth Logger	2203'		
Bottom Logged Interval	2201'		
Top Log Interval	Surface Casing		
Casing Driller	8 5/8" @ 362'		
Casing Logger	362'		
Bit Size	7 7/8"		
Type Fluid in Hole	Water		
Density / Viscosity	///		
pH / Fluid Loss	///		
Source of Sample	///		
Rm @ Meas. Temp	///		
Rmf @ Meas. Temp	///		
Rmc @ Meas. Temp	///		
Source of Rmf / Rmc	///		
Rm @ BHT	///		
Time Circulation Stopped	12:00 a.m.		
Time Logger on Bottom	3:20 a.m.		
Maximum Recorded Temperature	115		
Equipment Number	T677		
Location	Trinidad		
Recorded By	L. Smith		
Witnessed By	Mr. Don Johnson		

>>> Fold Here >>>

All interpretations are opinions based on inferences from electrical or other measurements and we cannot and do not guarantee the accuracy or correctness of any interpretation, and we shall not, except in the case of gross or willful negligence on our part, be liable or responsible for any loss, costs, damages, or expenses incurred or sustained by anyone resulting from any interpretation made by any of our officers, agents or employees. These interpretations are also subject to our general terms and conditions set out in our current Price Schedule.

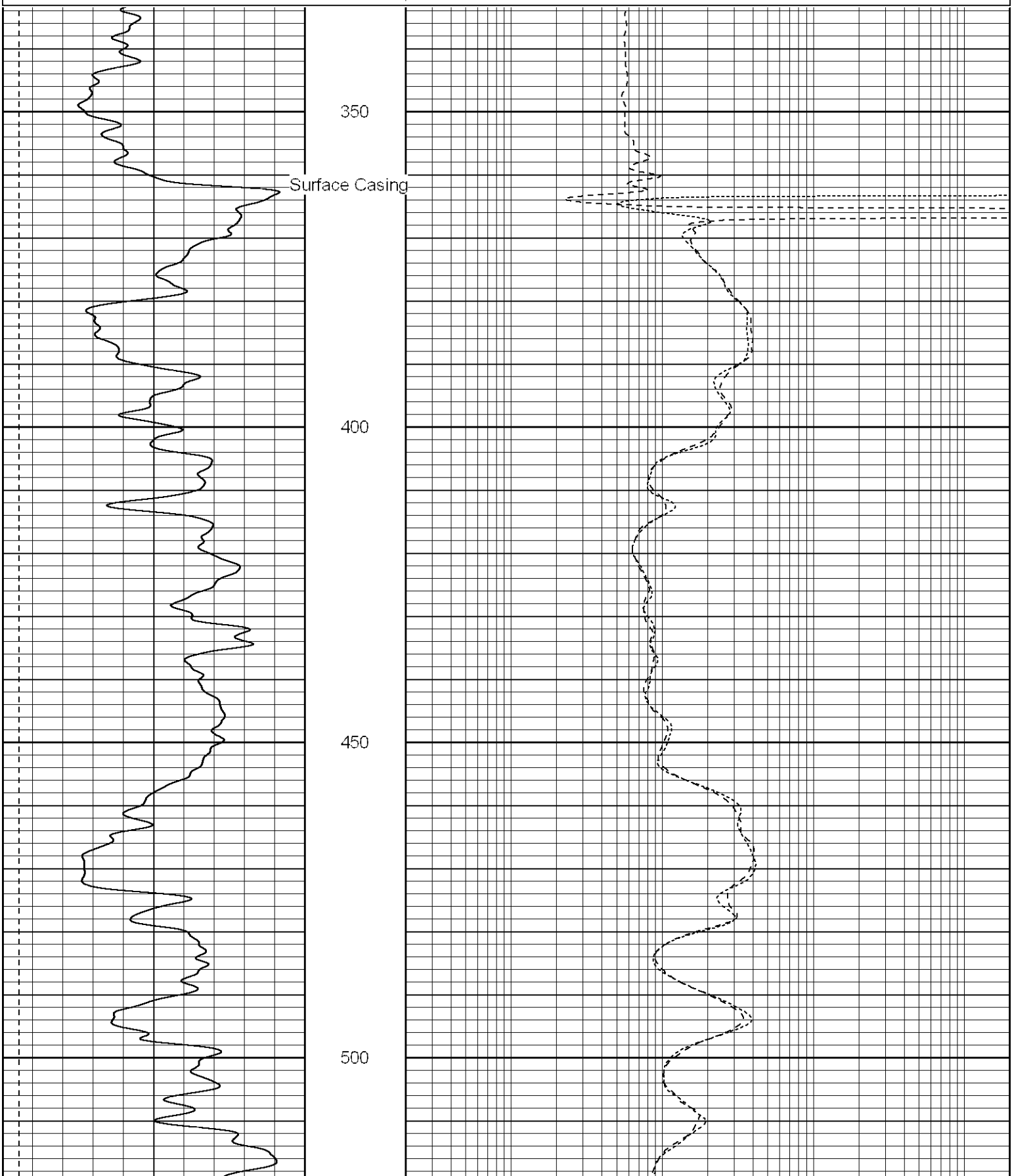
Comments

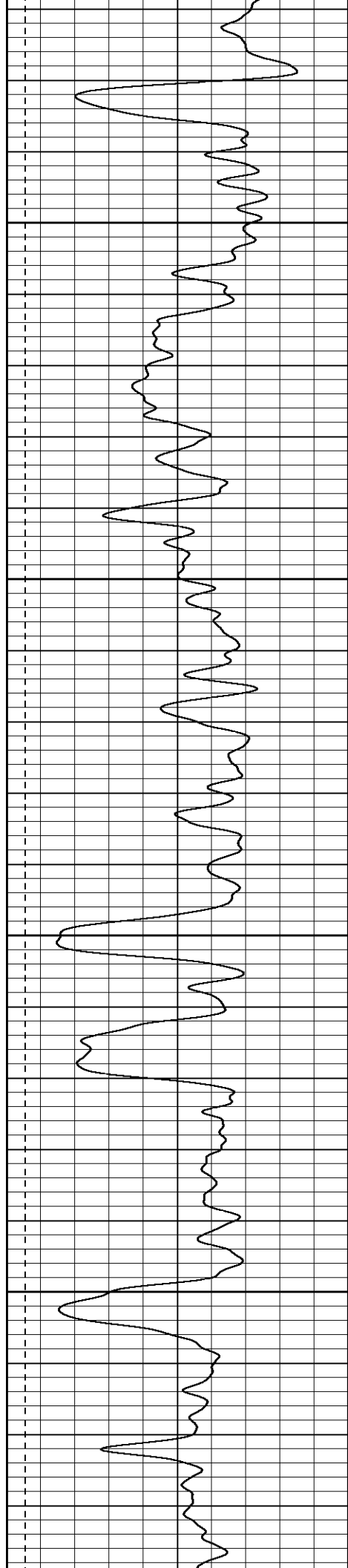
Turn at Bosque before Weston, go right at Big Bingham Canyon, stay on main rd. for 1.7 miles and go right to location.

Patterson

Main Pass

0	GR (GAPI)	200	0.2	RILD (Ohm-m)	2000
-200	SP (mV)	0	0.2	RILM (Ohm-m)	2000
			0.2	RLL3 (Ohm-m)	2000



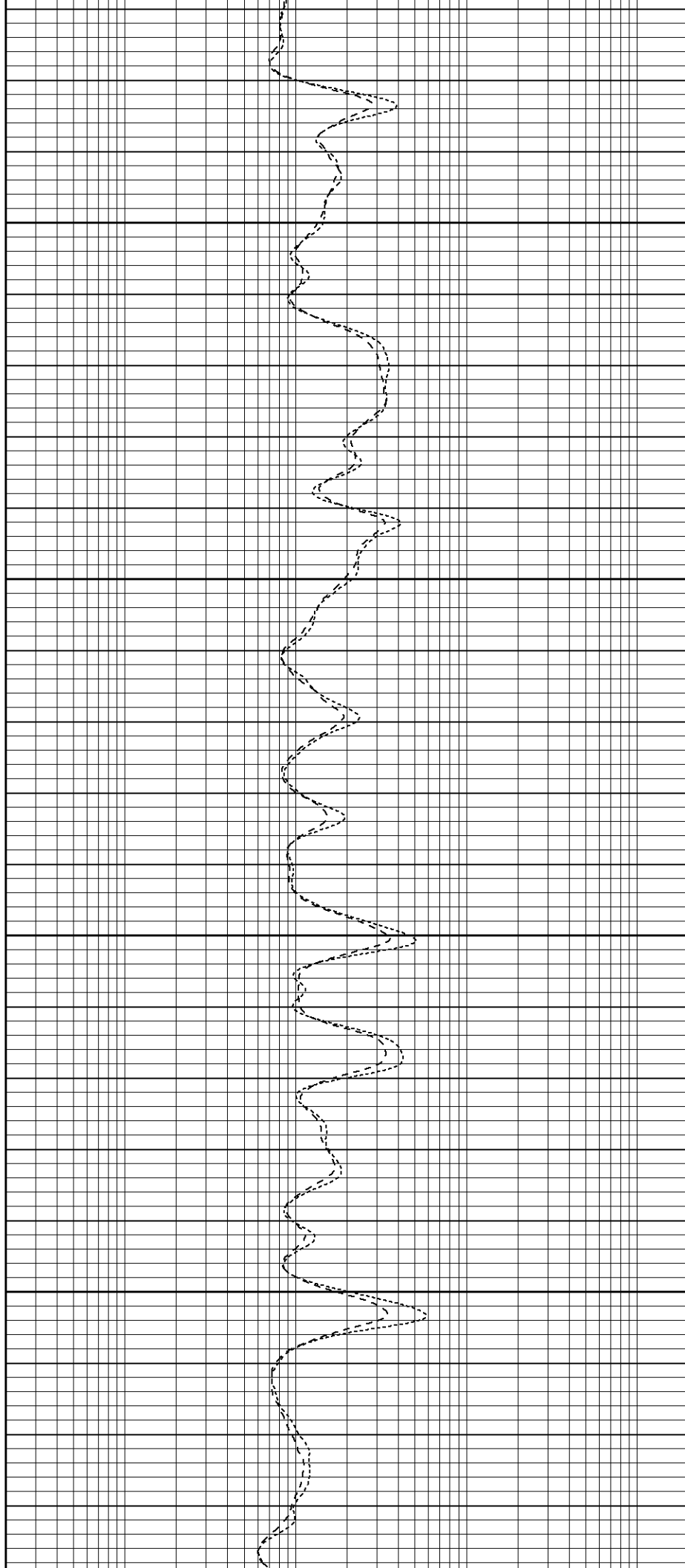


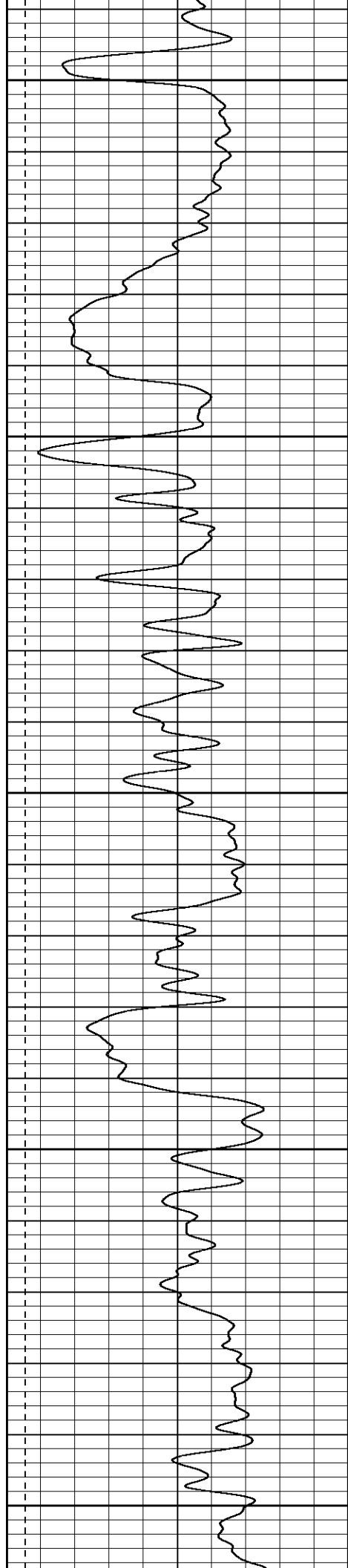
550

600

650

700





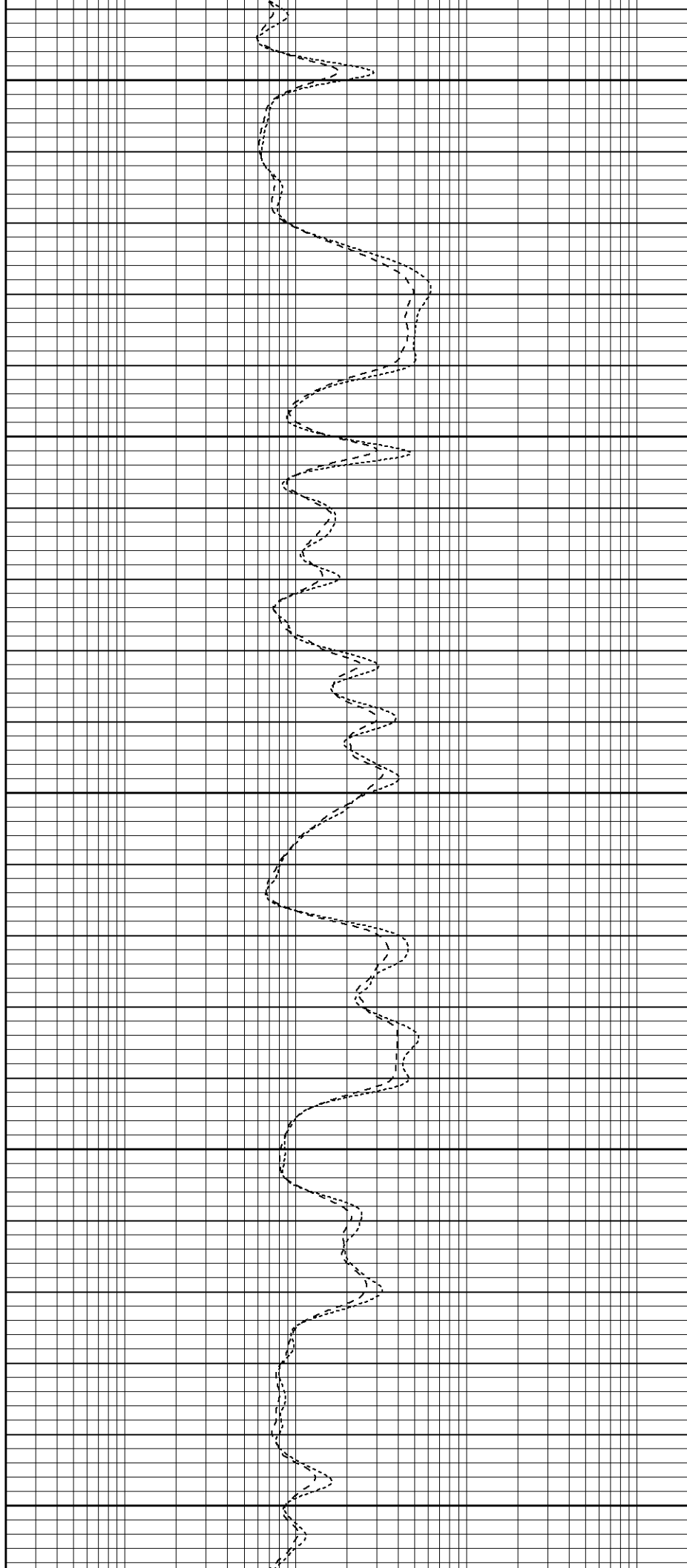
750

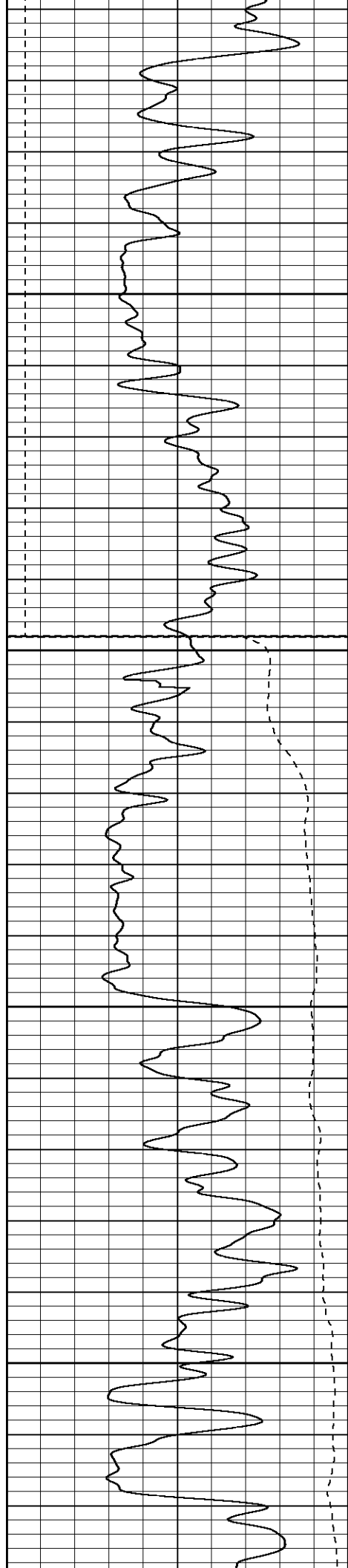
800

850

900

950



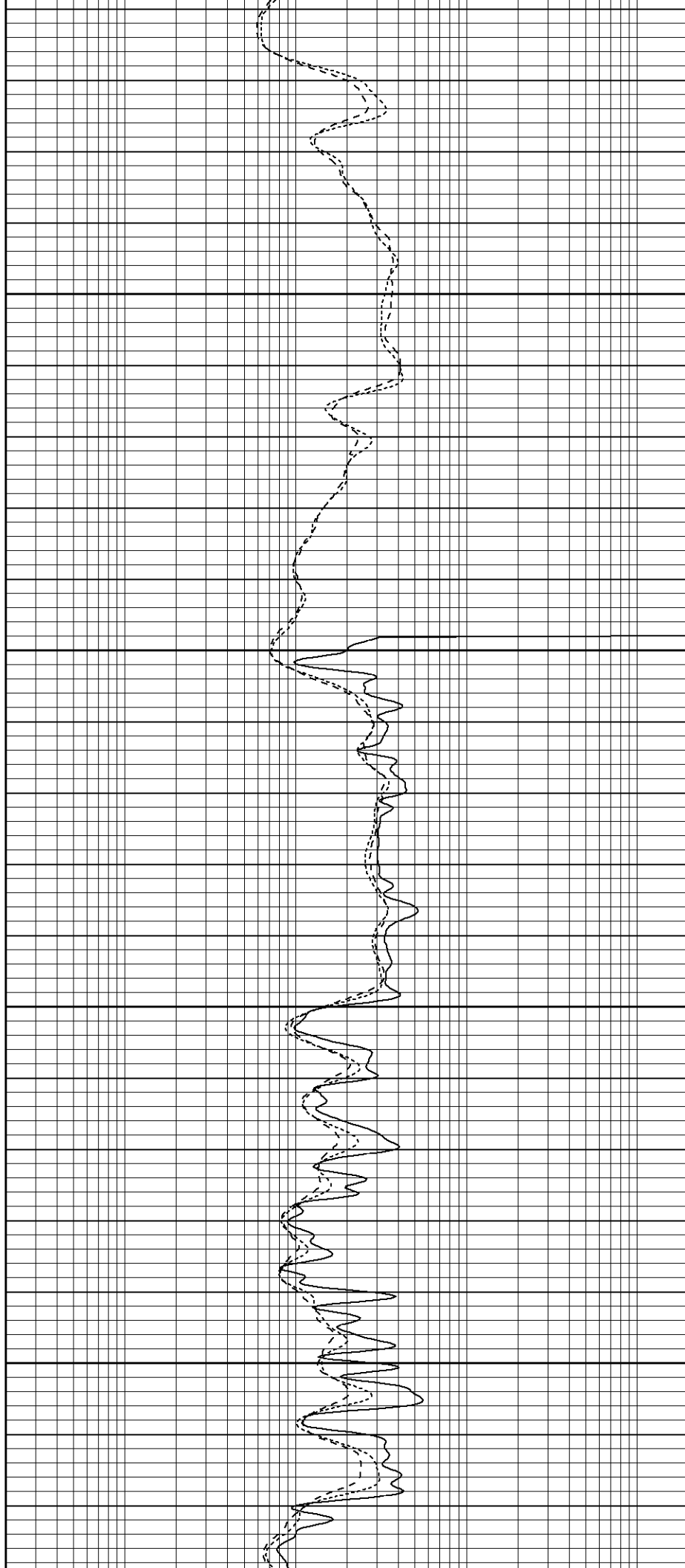


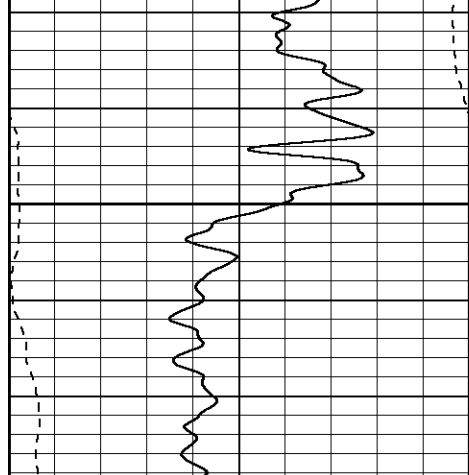
1000

Fluid Level
1000

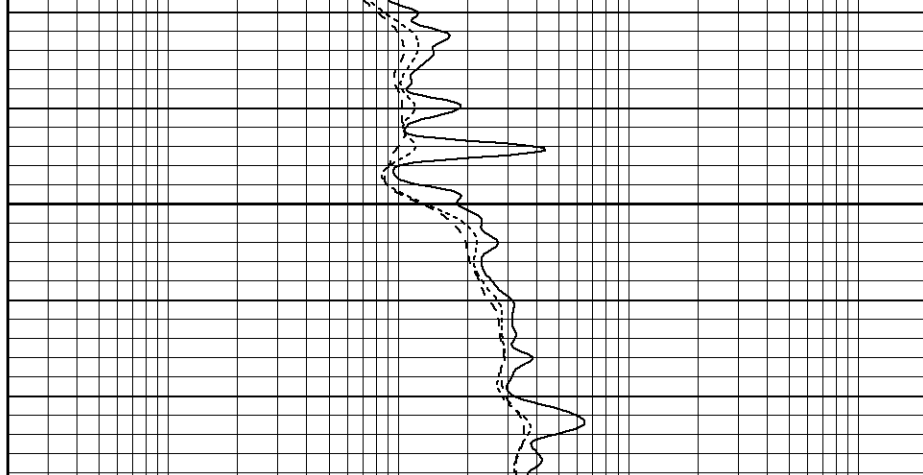
1100

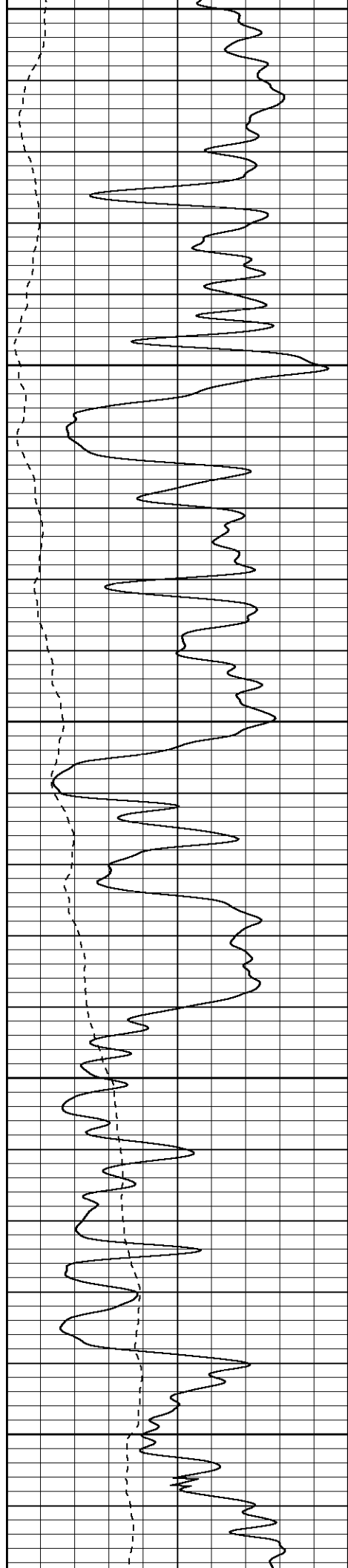
1150





1200





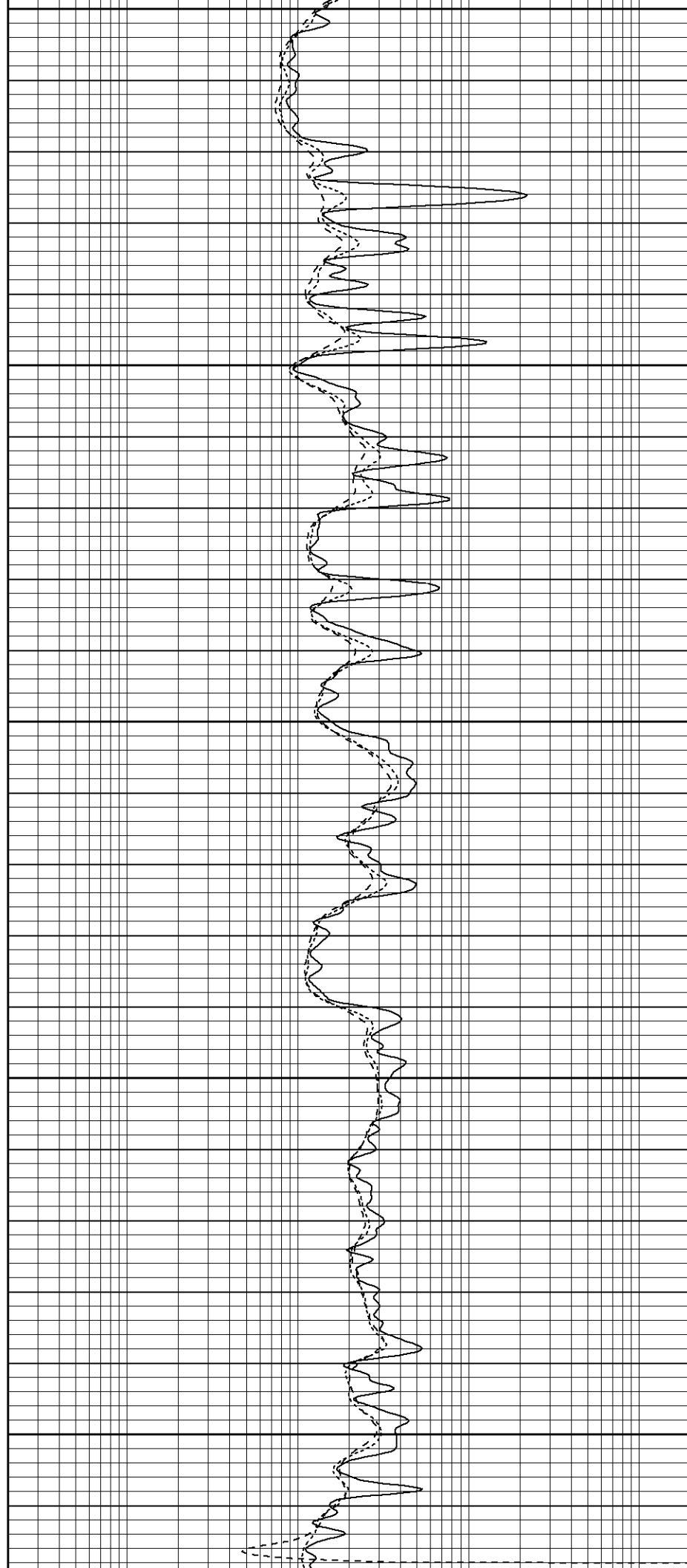
1400

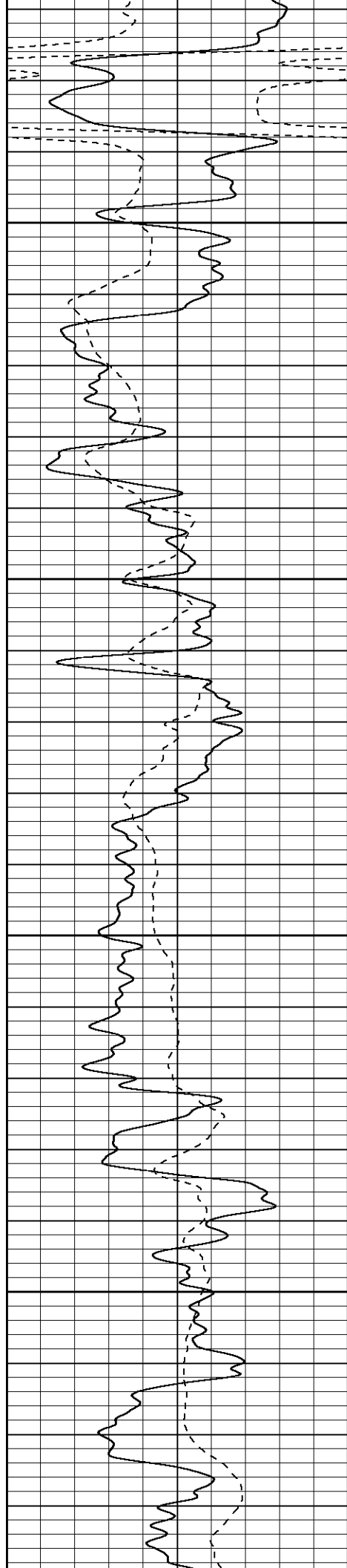
1450

1500

1550

1600



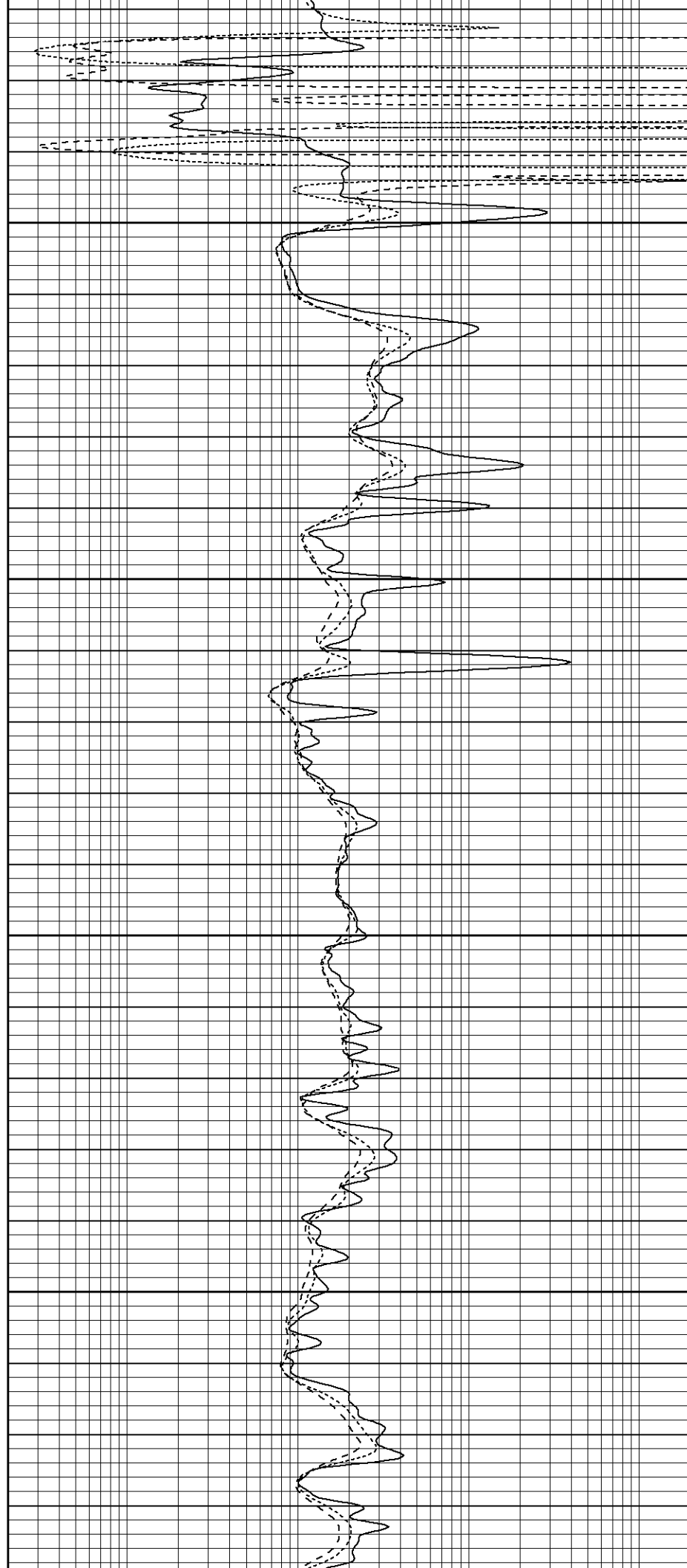


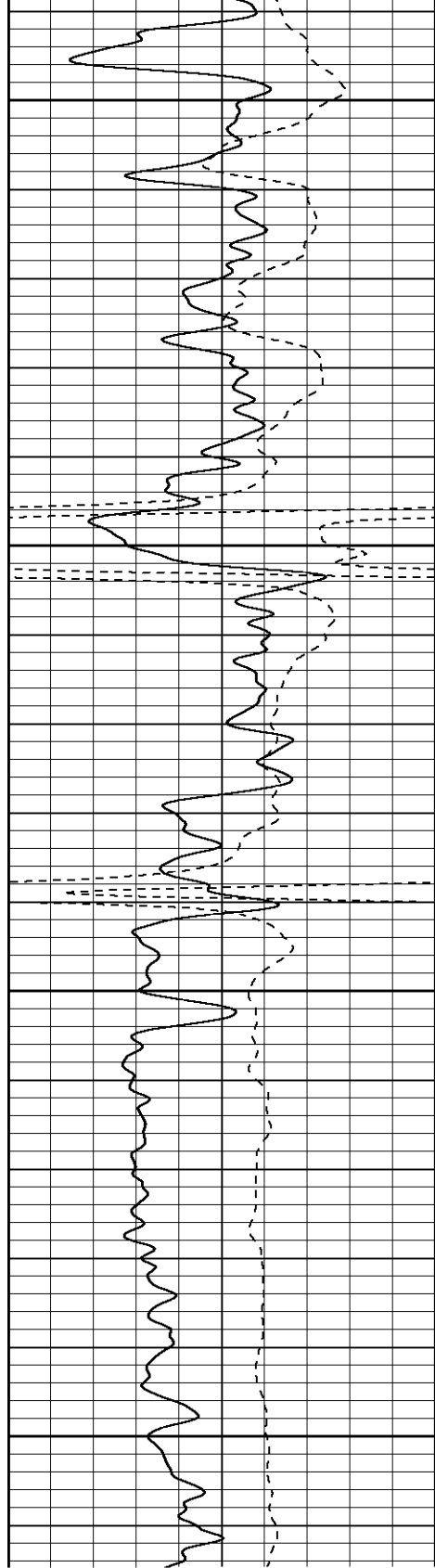
1650

1700

1750

1800



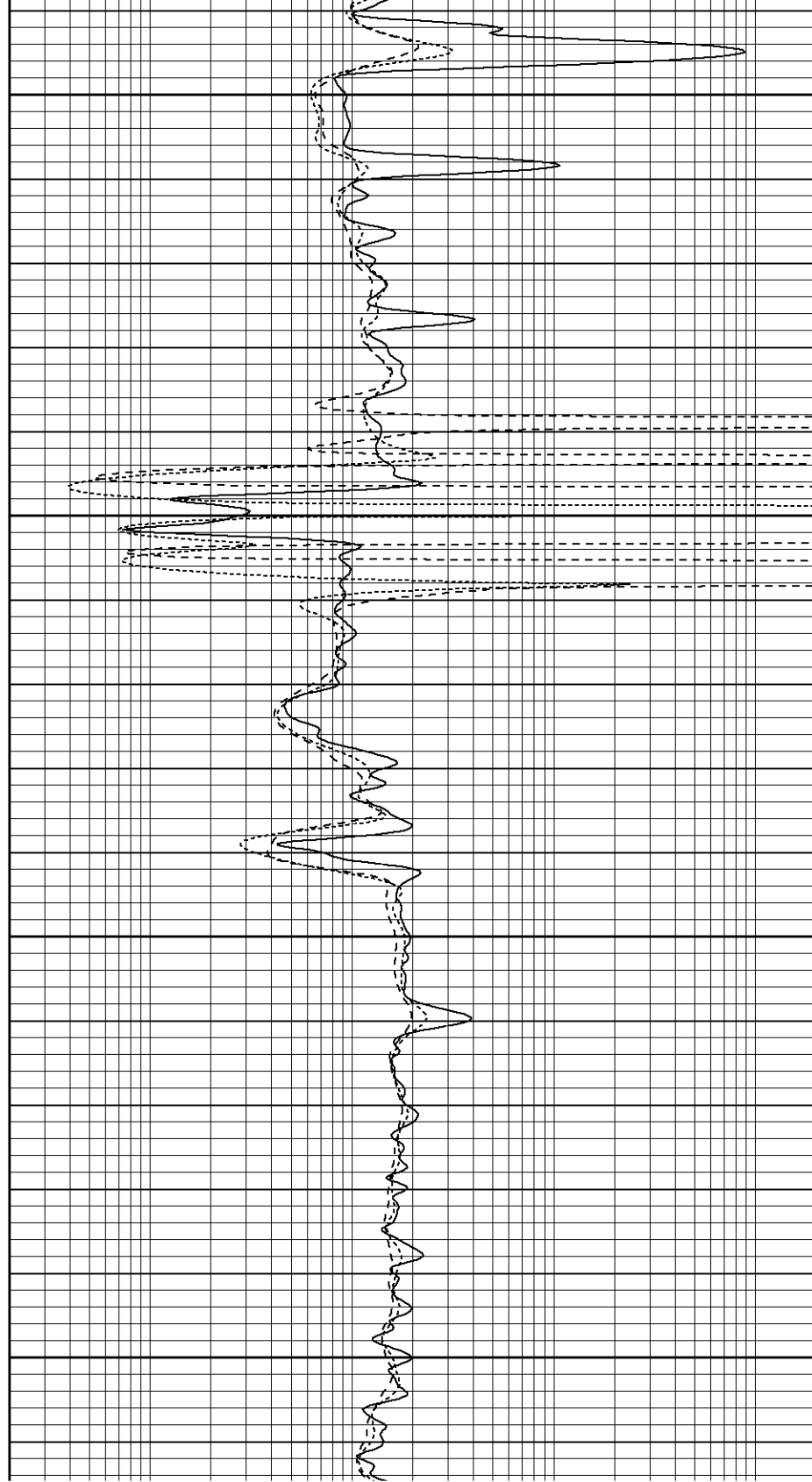


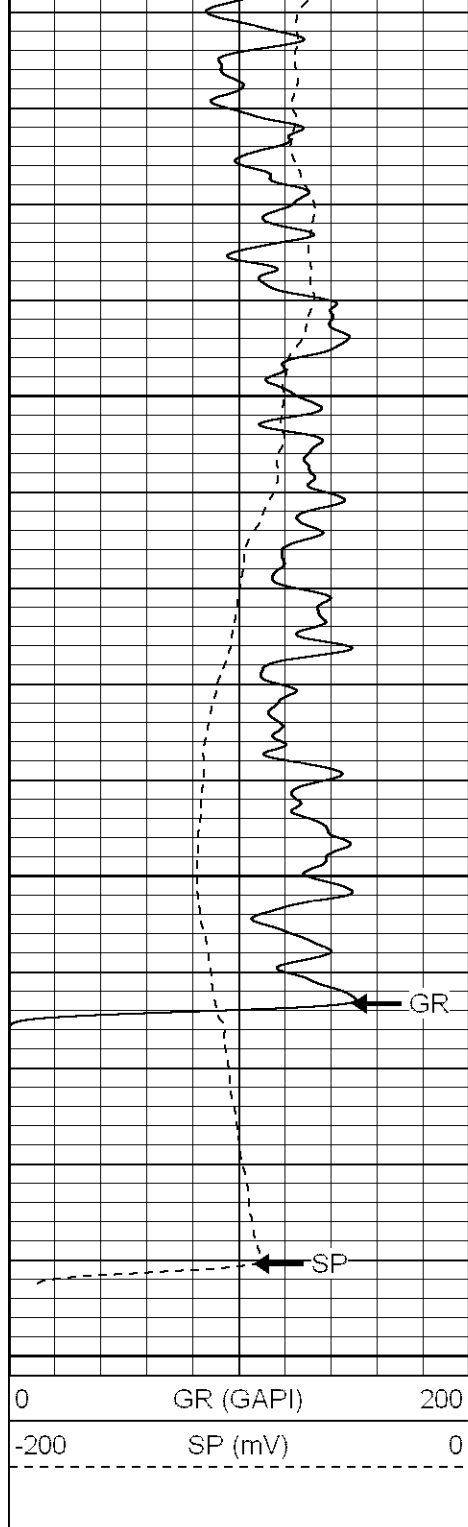
1850

1900

1950

2000

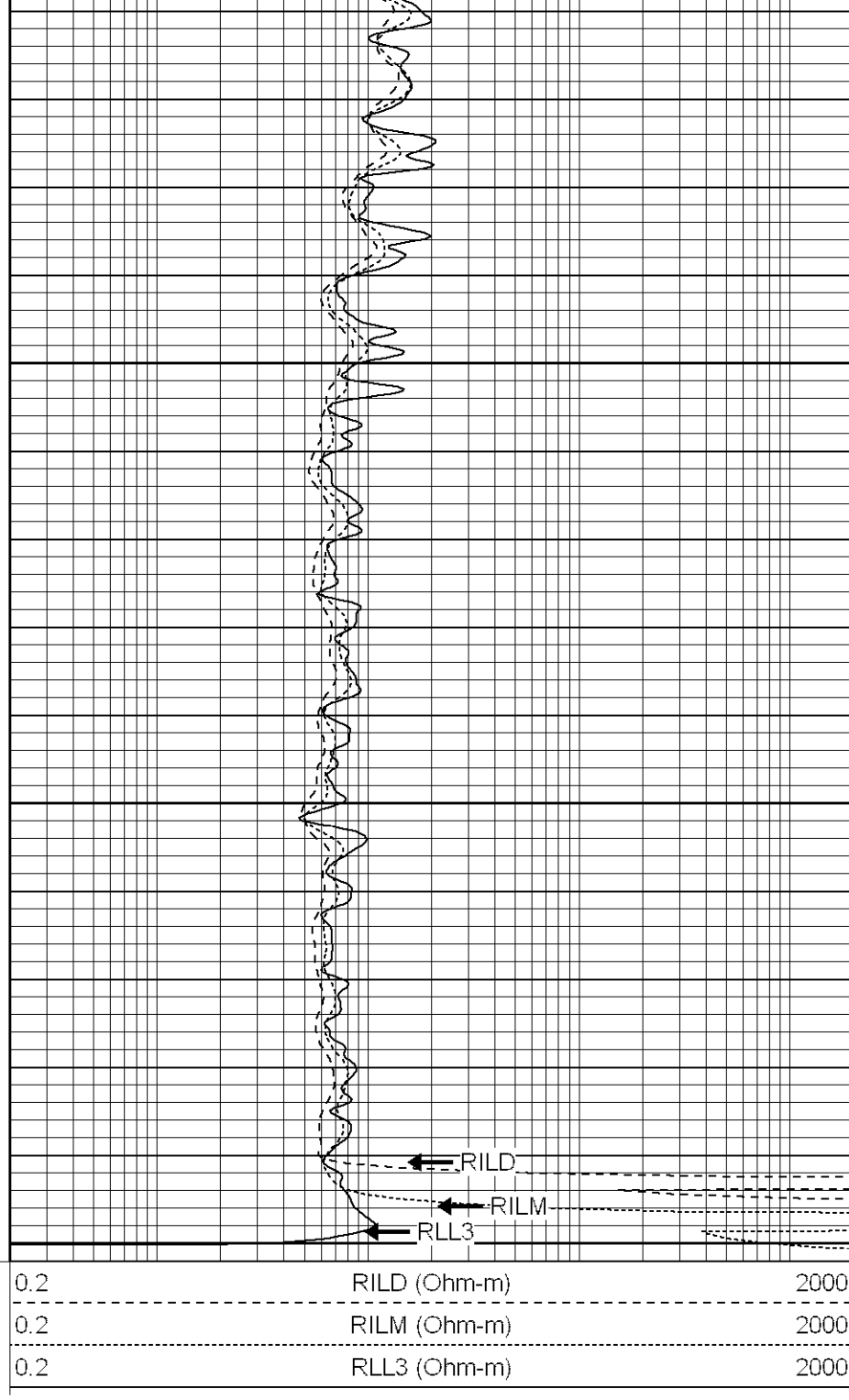




2100

2150

2200



Patterson

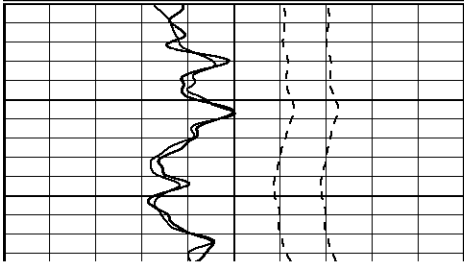
Repeat Pass

Database File: xtoac1807.db
 Dataset Pathname: pass1.1
 Presentation Format: dil
 Dataset Creation: Wed Aug 09 04:17:03 2006 by Calc Warrior 7.0 STD Ope
 Charted by: Depth in Feet scaled 1:240

0	GR (GAPI)	200
-200	SP (mV)	0
0	GR-repeat (GAPI)	200

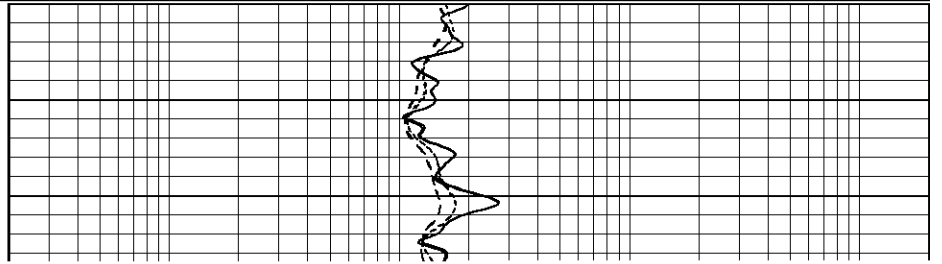
0.2	RILD (Ohm-m)	2000
0.2	RILM (Ohm-m)	2000
0.2	RLL3 (Ohm-m)	2000

-200 SP-repeat (mV) 0



2000

0.2 RLL3-repeat (Ohm-m) 2000
0.2 RILM-repeat (Ohm-m) 2000
0.2 RILD-repeat (Ohm-m) 2000



GR (GAPI)		200	0.2	RILD (Ohm-m)	2000
-200	SP (mV)	0	0.2	RILM (Ohm-m)	2000
0	GR-repeat (GAPI)	200	0.2	RLL3 (Ohm-m)	2000
-200	SP-repeat (mV)	0	0.2	RLL3-repeat (Ohm-m)	2000
			0.2	RILM-repeat (Ohm-m)	2000
			0.2	RILD-repeat (Ohm-m)	2000

Dual Induction Calibration Report				
Serial-Model:		5375-G		
Surface Cal Performed:		Tue Aug 08 14:35:20 2006		
Downhole Cal Performed:		Wed Aug 09 02:35:58 2006		

Surface Calibration									
Readings				References			Results		
Loop:	Air	Loop		Air	Loop		m	b	
Deep	0.007	0.626	V	0.000	500.000	mmho-m	807.722	-5.990	
Medium	0.011	0.749	V	0.000	550.000	mmho-m	744.807	-7.828	
Internal:	Zero	Cal		Zero	Cal		m	b	
Deep	0.007	0.626	V	0.000	500.000	mmho-m	808.280	-5.940	
Medium	0.010	0.749	V	0.000	550.000	mmho-m	744.980	-7.794	

Downhole Calibration									
Readings				References			Results		
Internal:	Zero	Cal		Zero	Cal		m	b	
Deep	0.025	500.232	mmho-m	-0.054	499.601	mmho-m	0.999	-0.079	
Medium	-0.182	550.455	mmho-m	-0.036	549.836	mmho-m	0.999	0.145	
Shallow	2.510	0.017	V	500.000	2.000	Ohm-m	149.001	-4.800	

Compensated Density Calibration Report				
Serial-Model:		902-2.75POH		
Source / Verifier:		/		
Master Calibration Performed:		Mon Aug 07 09:58:44 2006		

Master Calibration					
Density			Far Detector	Near Detector	
Magnesium	1.710	g/cc	1017.78	494.16	cps
Aluminum	2.590	g/cc	182.34	245.43	cps

Performed: Mon Aug 07 03:32:00 2006

Calibrator Value:	1	NAPI
Calibrator Reading:	1	cps
Sensitivity:	1	NAPI/cps

Gamma Ray Calibration Report

Serial Number:	804
Tool Model:	2.75POH
Performed:	Mon Aug 07 03:32:00 2006

Calibrator Value:	1.0	GAPI
Background Reading:	0.0	cps
Calibrator Reading:	1.0	cps
Sensitivity:	0.8000	GAPI/cps

Sensor	Offset (ft)	Schematic	Description	Len (ft)	OD (in)	Wt (lb)
CHD	39.37		None	0.75	1.50	5.00
GR	37.64		GR-2.75POH (804) Probe	3.73	2.75	43.00
NEU	32.10		NEU-2.75POH (802) Probe Epithermal	4.75	2.75	58.00
LSD	24.47		CDL-2.75POH (902) Probe	8.43	2.75	106.00
DCAL	24.19		Probe	0.89	3.50	20.00
SSD	23.95					
10pin	21.72					
CILD	10.60		DIL-G (5375) Gearhart	20.83	4.00	345.00
SP	10.60					
CILM	6.89					

RLL3	1.70					
Dataset: /field/well/run1/_plots/_jobs_/dil Total Length: 39.37 ft Total Weight: 577.00 lb O.D. 4.00 in						