

|   |  |  |  |                          |  |                     |  |                                      |  |                            |  |
|---|--|--|--|--------------------------|--|---------------------|--|--------------------------------------|--|----------------------------|--|
| <div>PHOENIX SURVEYS, INC.</div> <div><div>PSI</div><div>DUAL INDUCTION<br/>GUARD LOG<br/>GAMMA RAY</div></div> |  | Company<br>Great Western Oil & Gas LLC |  | Well<br>Cornish 11-17    |  | Field<br>Wattenberg |  | County<br>Weld                       |  | State/Province<br>Colorado |  |
| Location  |  | 698 FNL & 692 FWL                      |  | Sec 17, T10P 6N, R9E 63W |  | Elevation<br>4830   |  | Other Services<br>Density<br>Neutron |  |                            |  |
| Permanent Beam  |  | CL                                     |  |                          |  |                     |  |                                      |  |                            |  |
| Log Measured From   |  | KB                                     |  |                          |  | Elevation<br>4830   |  | K & L<br>D.E. 4830                   |  |                            |  |
| Date  |  | October 16, 2007                       |  |                          |  |                     |  |                                      |  |                            |  |
| Run Number  |  | 6980                                   |  |                          |  |                     |  |                                      |  |                            |  |
| Depth Logger  |  | 6980                                   |  |                          |  |                     |  |                                      |  |                            |  |
| Bottom Logged Interval  |  | Casing                                 |  |                          |  |                     |  |                                      |  |                            |  |
| Top Log Interval  |  |  |  |                          |  |                     |  |                                      |  |                            |  |
| Casing Outer  |  | 7.50                                   |  |                          |  |                     |  |                                      |  |                            |  |
| Casing ID   |  | 7.75                                   |  |                          |  |                     |  |                                      |  |                            |  |
| Type Fluid in Hole  |  | Chem Gel                               |  |                          |  |                     |  |                                      |  |                            |  |
| Density / viscosity   |  | 3.53 / 50                              |  |                          |  |                     |  |                                      |  |                            |  |
| Source of Sample  |  | Flowline                               |  |                          |  |                     |  |                                      |  |                            |  |
| Run @ Meas. Temp  |  | 3.41 @ 82° F                           |  |                          |  |                     |  |                                      |  |                            |  |
| Run @ Meas. Temp  |  | 2.72 @ 82° F                           |  |                          |  |                     |  |                                      |  |                            |  |
| Run @ Meas. Temp  |  | 4.09 @ 78° F                           |  |                          |  |                     |  |                                      |  |                            |  |
| Run @ RT Meas. Temp   |  | 1.15 @ 207° F                          |  |                          |  |                     |  |                                      |  |                            |  |
| Time Cables Stopped   |  | 23:00 10/15                            |  |                          |  |                     |  |                                      |  |                            |  |
| Time Cables Started   |  | 4:30                                   |  |                          |  |                     |  |                                      |  |                            |  |
| Minimum Recorded Temperature  |  | 207° F                                 |  |                          |  |                     |  |                                      |  |                            |  |
| Location  |  | Britten, CO                            |  |                          |  |                     |  |                                      |  |                            |  |
| Recorded By   |  | Patty Chaffin                          |  |                          |  |                     |  |                                      |  |                            |  |
| Unrevised By  |  | Mark Scamardo                          |  |                          |  |                     |  |                                      |  |                            |  |

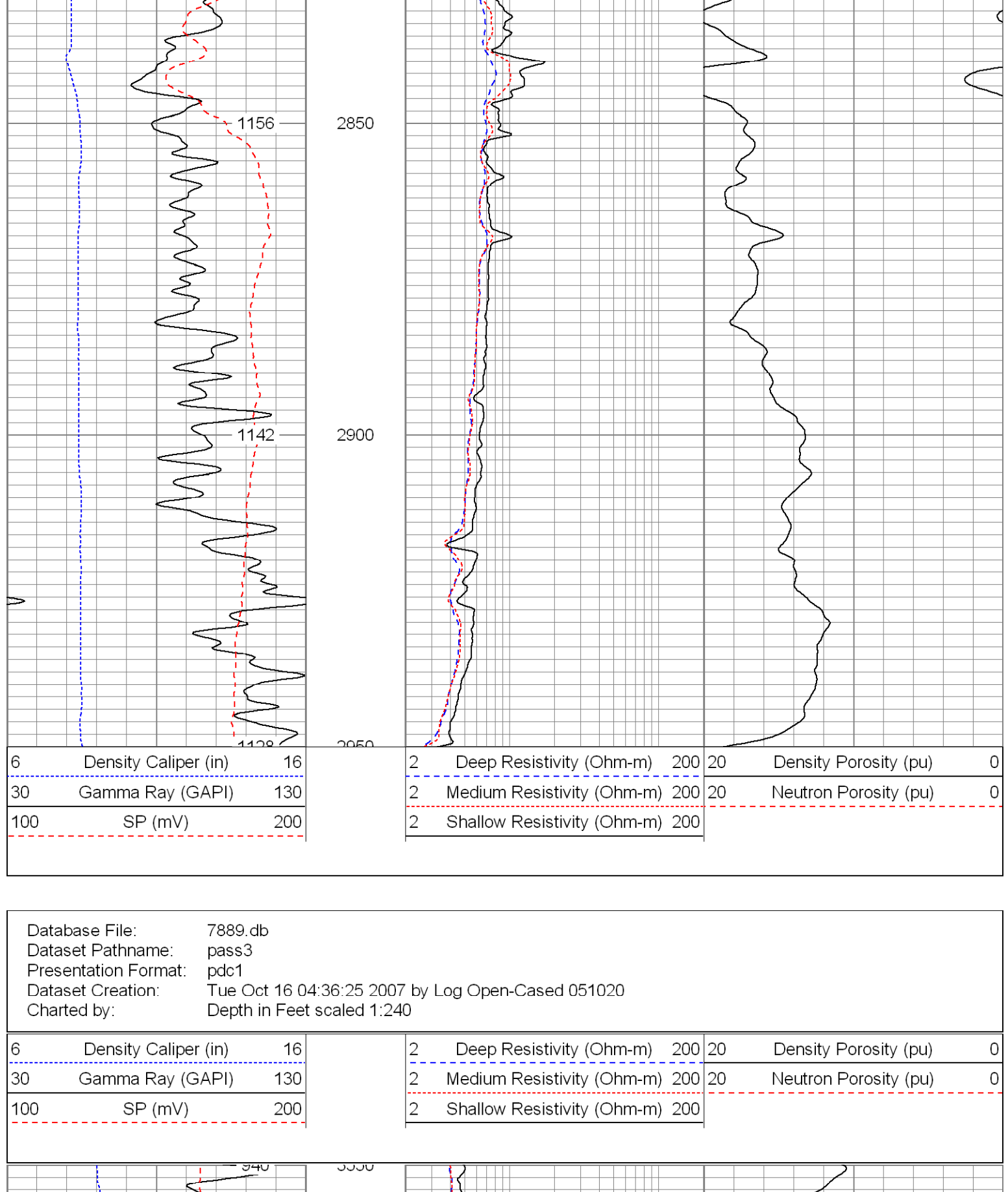
<<< Fold Here >>>

All interpretations are opinions based on inferences from electrical or other measurements and we cannot and do not guarantee the accuracy or correctness of any interpretation, and we shall not, except in the case of gross or willful negligence on our part, be liable or responsible for any loss, costs, damages, or expenses incurred or sustained by anyone resulting from any interpretation made by any of our officers, agents or employees. These interpretations are also subject to our general terms and conditions set out in our current Price Schedule.

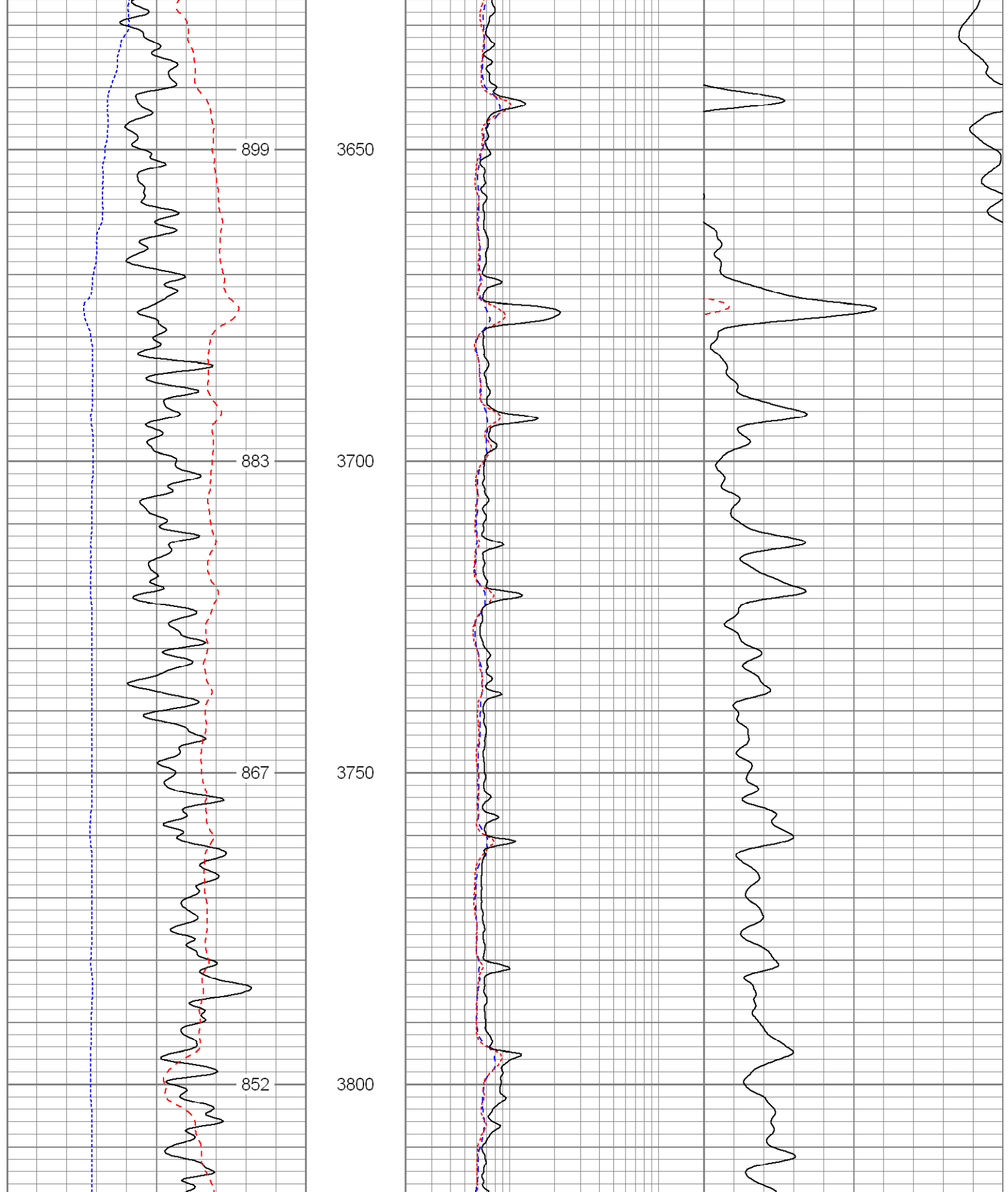
Comments

Annular volume calculated for 4.5" casing  
Ensign Drilling Rig 55  
Thank you for using Phoenix Surveys.  
API #: 05-123-24169-00

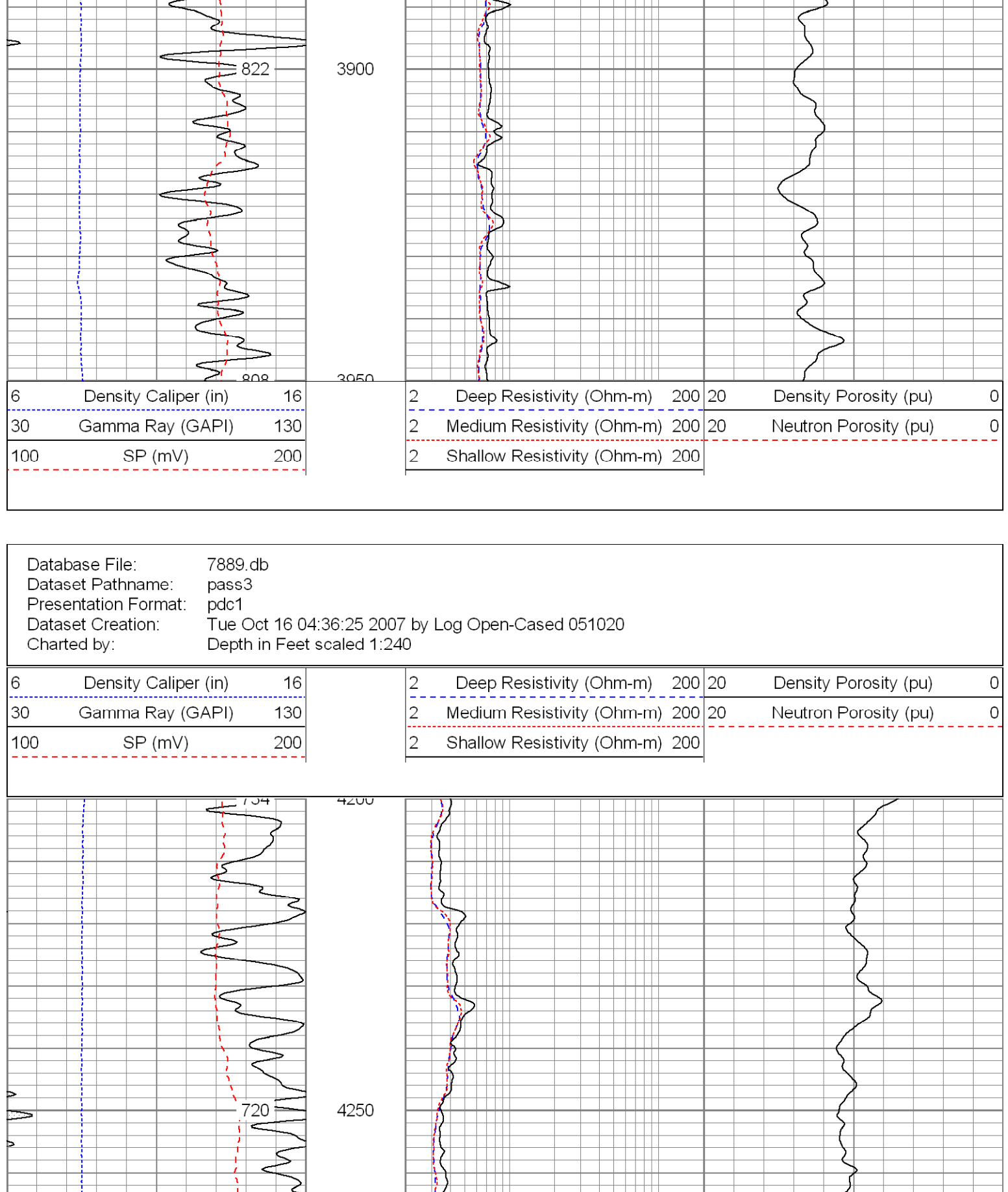
Database File: 7889.db  
Dataset Pathname: pass3  
Presentation Format: pdc1  
Dataset Creation: Tue Oct 16 04:36:25 2007 by Log Open-Cased 051020  
Charted by: Depth in Feet scaled 1:240



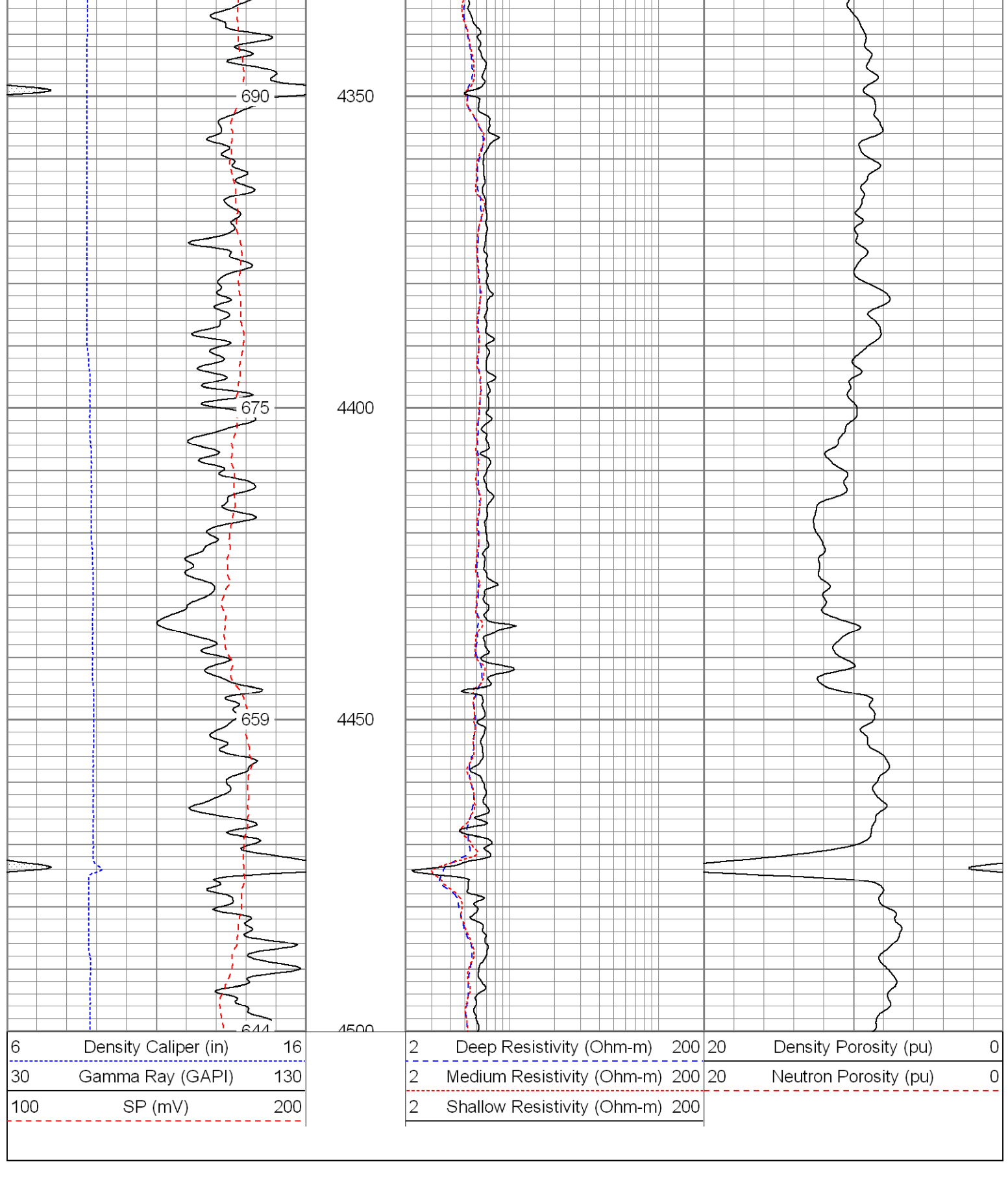
Database File: 7889.db  
Dataset Pathname: pass3  
Presentation Format: pdc1  
Dataset Creation: Tue Oct 16 04:36:25 2007 by Log Open-Cased 051020  
Charted by: Depth in Feet scaled 1:240



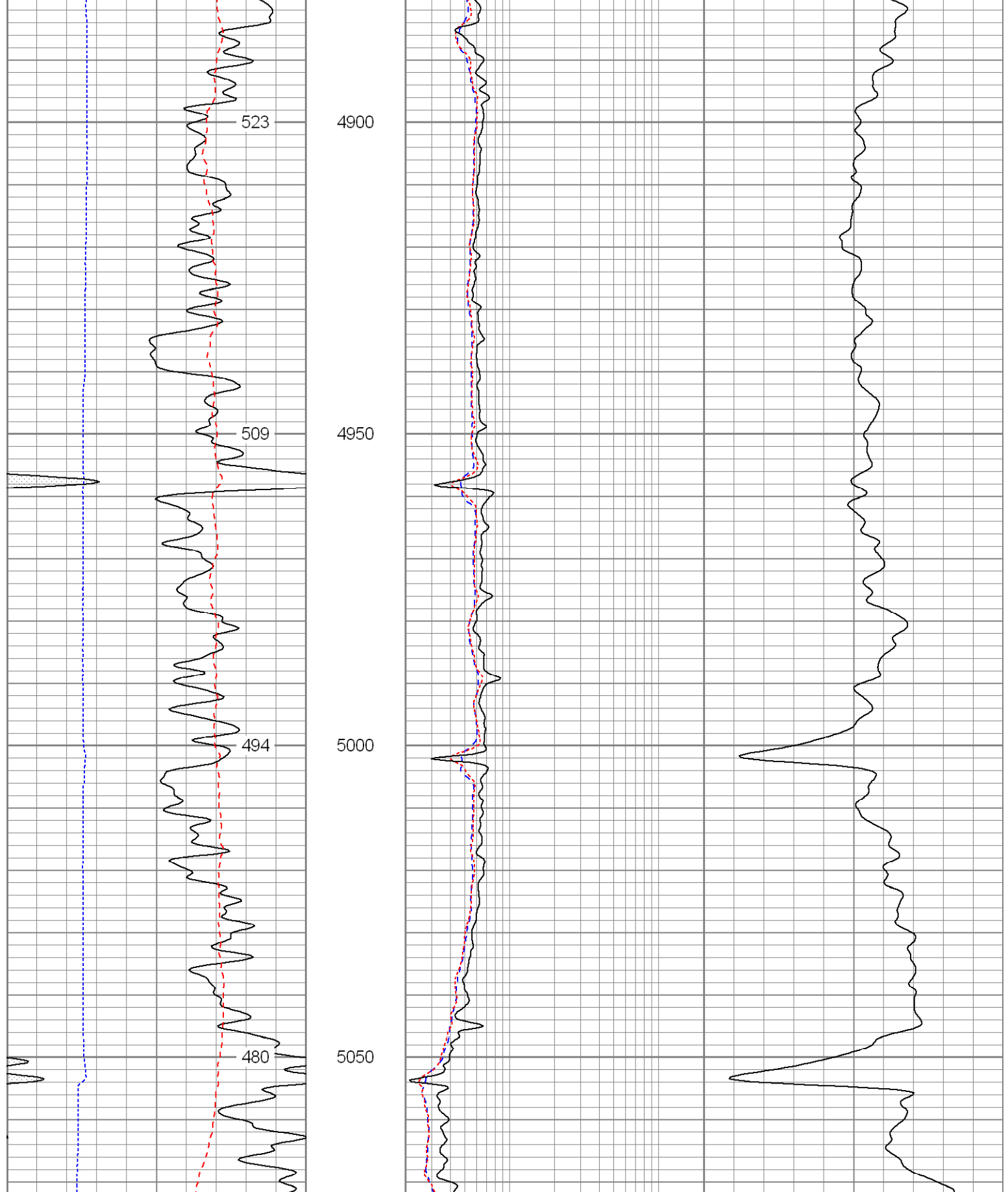
Database File: 7889.db  
Dataset Pathname: pass3  
Presentation Format: pdc1  
Dataset Creation: Tue Oct 16 04:36:25 2007 by Log Open-Cased 051020  
Charted by: Depth in Feet scaled 1:240



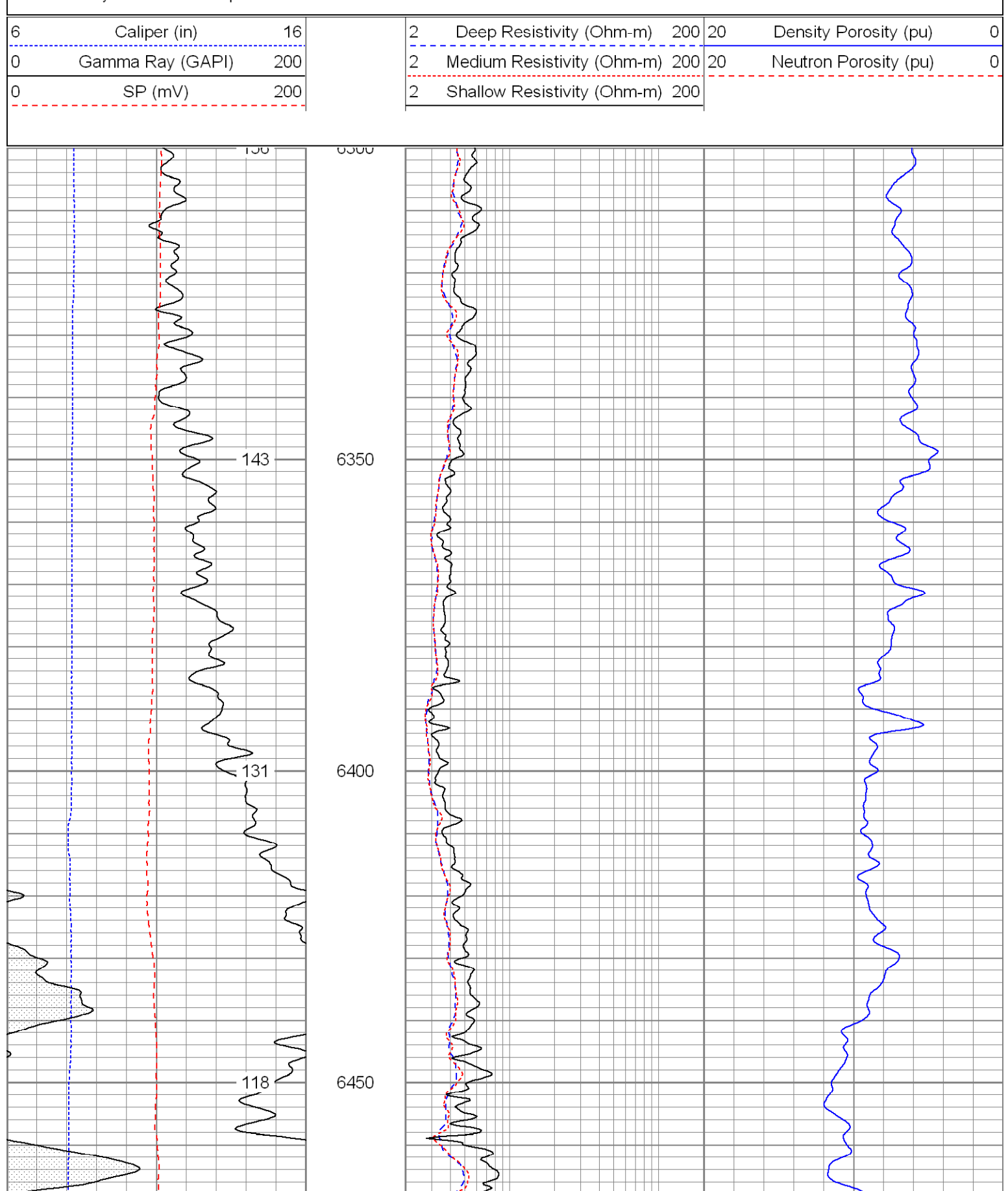
Database File: 7889.db  
Dataset Pathname: pass3  
Presentation Format: pdc1  
Dataset Creation: Tue Oct 16 04:36:25 2007 by Log Open-Cased 051020  
Charted by: Depth in Feet scaled 1:240



Database File: 7889.db  
Dataset Pathname: final  
Presentation Format: pdc  
Dataset Creation: Tue Oct 16 04:52:23 2007  
Charted by: Depth in Feet scaled 1:240



Database File: 7889.db  
Dataset Pathname: final  
Presentation Format: pdc  
Dataset Creation: Tue Oct 16 04:52:23 2007  
Charted by: Depth in Feet scaled 1:240



Database File: 7889.db  
Dataset Pathname: final  
Presentation Format: pdc  
Dataset Creation: Tue Oct 16 04:52:23 2007  
Charted by: Depth in Feet scaled 1:240

