



**SUPERIOR**  
Black Lick, Pa.  
Mercer, Pa.  
Wooster, Oh.  
Cleveland, Ok.  
Trinidad, Co.

## DUAL INDUCTION LOG

Company XTO Energy Inc.  
Well New Elk 25-01  
Field Purgatoire River  
County Las Animas State Colorado

Location: API # : 05 071 09356 00

454' FNL & 135' FEL

SEC 25 TWP 33S RGE 68W

Permanent Datum Ground Level Elevation 7943'  
Log Measured From Ground Level  
Drilling Measured From Ground Level

Other Services  
CDL  
NEUTRON  
Elevation  
K.B. -----  
D.F. -----  
G.L. 7943'

Date 8-05-07 8-09-07

Run Number One Two

Depth Driller 2225' 2225'

Depth Logger 1828' 2227'

Bottom Logged Interval 1826' 2225'

Top Log Interval Surface Casing Surface

Casing Driller 8 5/8" @ 496' 8 5/8" @ 496'

Casing Logger 496' 496'

Bit Size 7 7/8" 7 7/8"

Type Fluid in Hole Water Water

Density / Viscosity /// ///

pH / Fluid Loss /// ///

Source of Sample /// ///

Rm @ Meas. Temp /// ///

Rmf @ Meas. Temp /// ///

Rmc @ Meas. Temp /// ///

Source of Rmf / Rmc /// ///

Rm @ BHT /// ///

Time Circulation Stopped 6:30 P.M. 7:45 A.M.

Time Logger on Bottom 9:15 P.M. 9:45 A.M.

Maximum Recorded Temperature 94 DEG F 103 DEG F

Equipment Number T697 T697

Location Trinidad Trinidad

Recorded By M. Norton M. Norton

Witnessed By Mr. Don Johnson Mr. Don Johnson

<<< Fold Here >>>

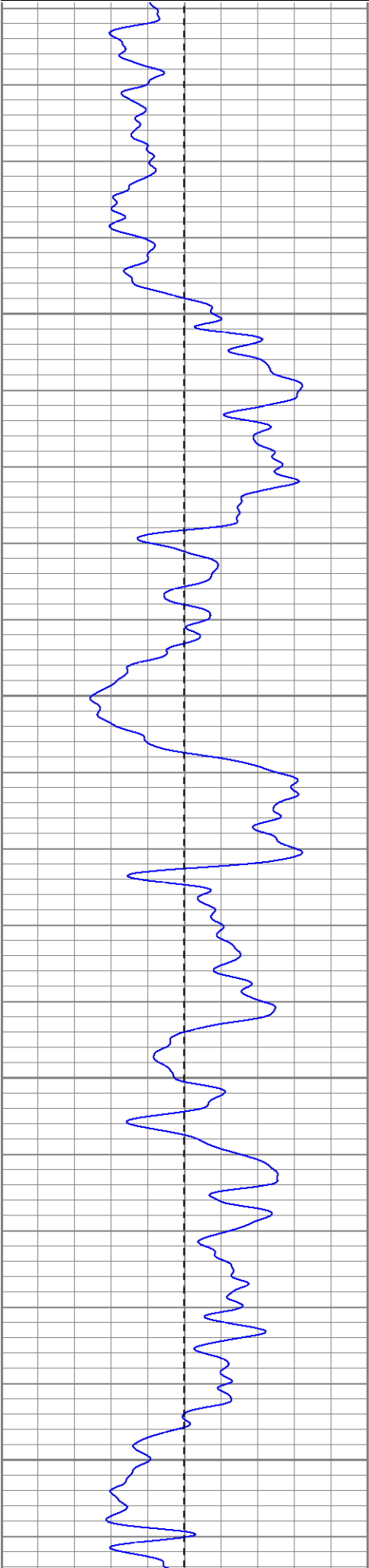
All interpretations are opinions based on inferences from electrical or other measurements and we cannot and do not guarantee the accuracy or correctness of any interpretation, and we shall not, except in the case of gross or willful negligence on our part, be liable or responsible for any loss, costs, damages, or expenses incurred or sustained by anyone resulting from any interpretation made by any of our officers, agents or employees. These interpretations are also subject to our general terms and conditions set out in our current Price Schedule.

### Comments

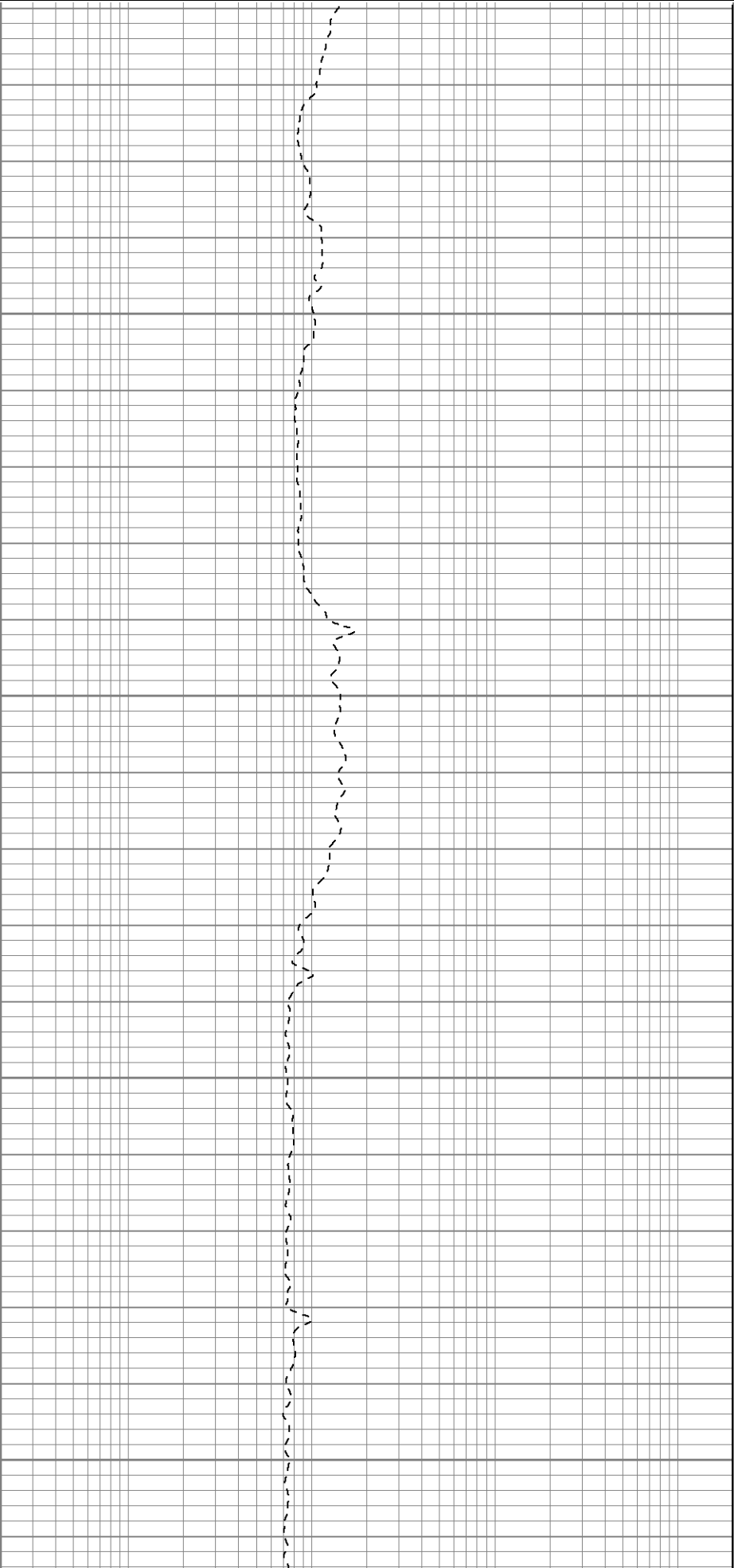
Well Directions:  
Second Bosque entrance four miles after Weston,  
right on Apache Canyon, first right after third drive thru location, end on location.

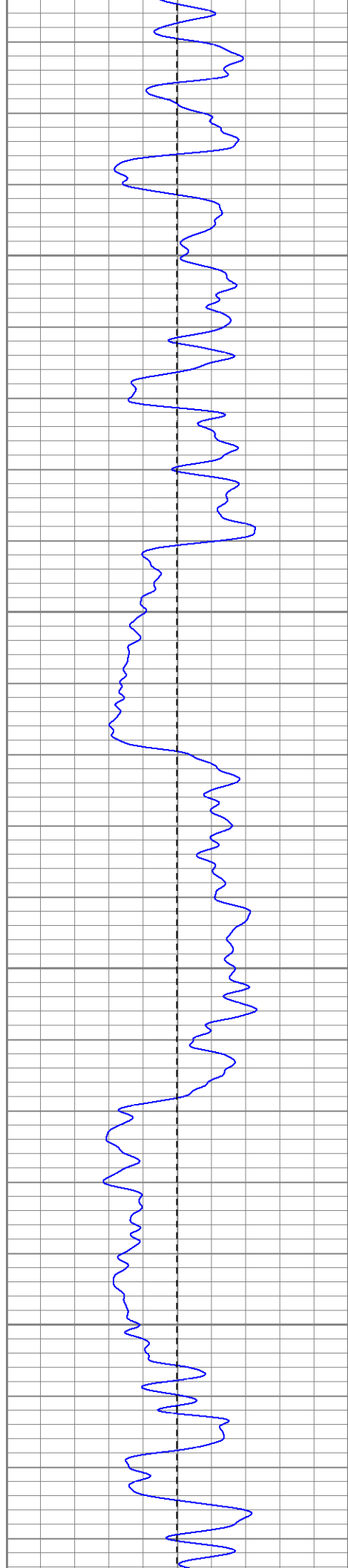
Database File: xtone2501.db  
Dataset Pathname: pass4.1  
Presentation Format: dil  
Dataset Creation: Thu Aug 09 12:05:38 2007 by Calc Open-Cased 061129  
Charted by: Depth in Feet scaled 1:240

0	GR (GAPI)	200
-100	SP (mV)	100



0.2	RILM (Ohm-m)	2000
0.2	RILD (Ohm-m)	2000
0.2	RLL3 (Ohm-m)	2000



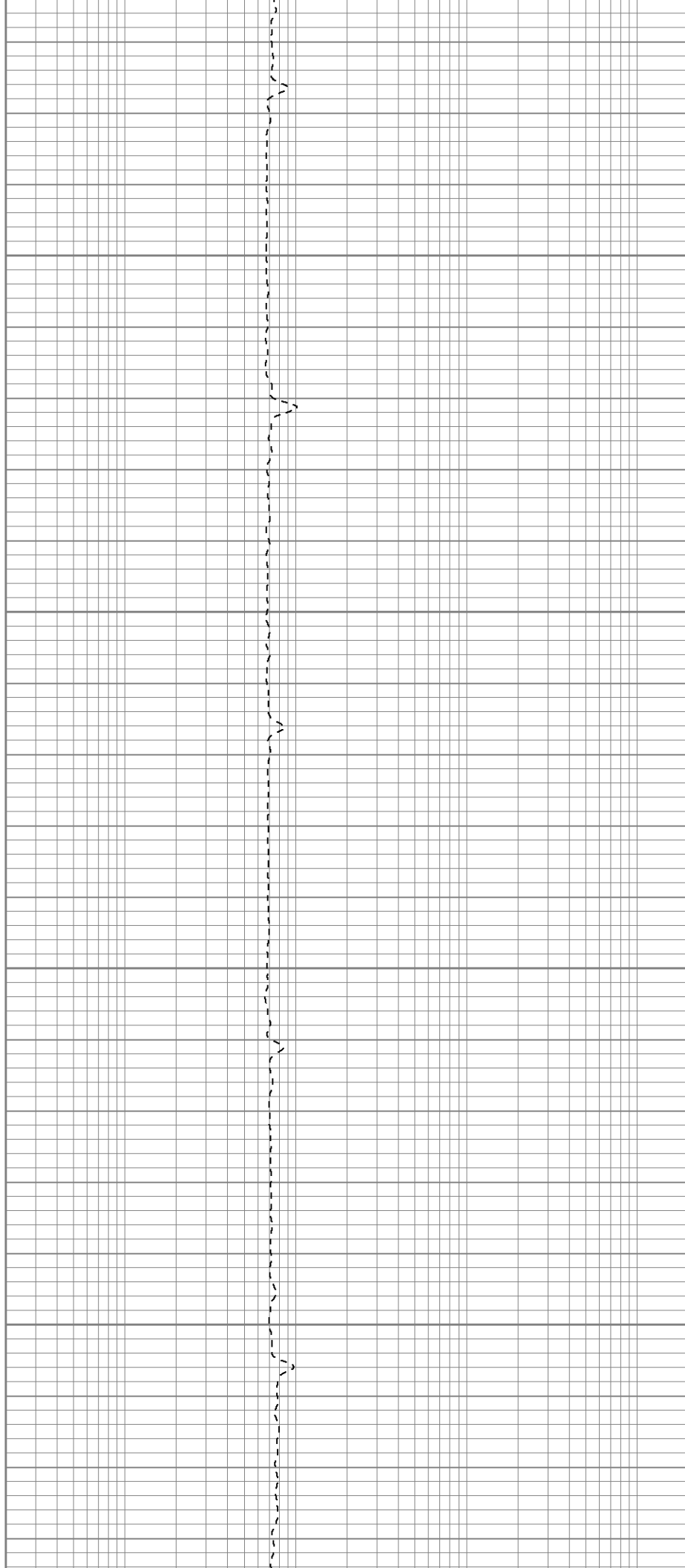


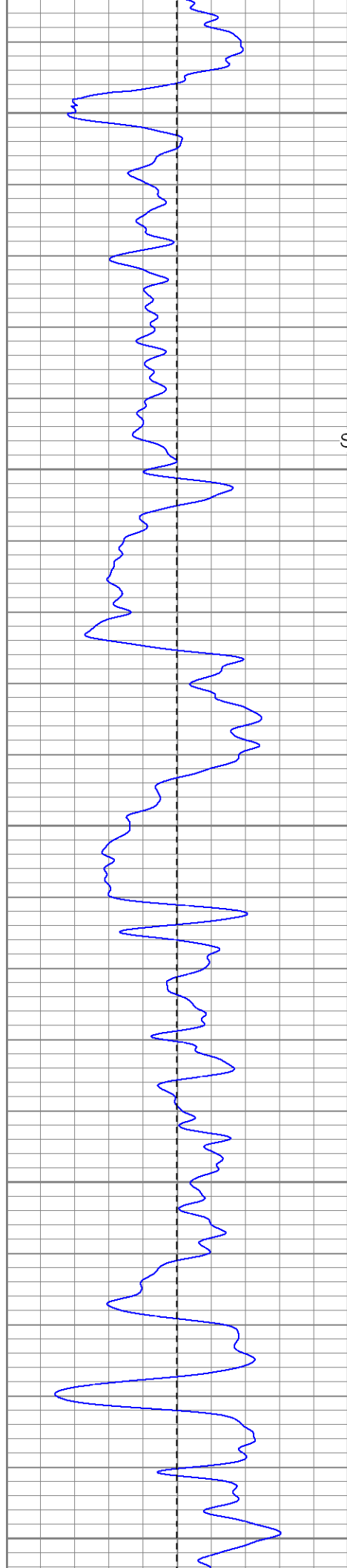
250

300

350

400





450

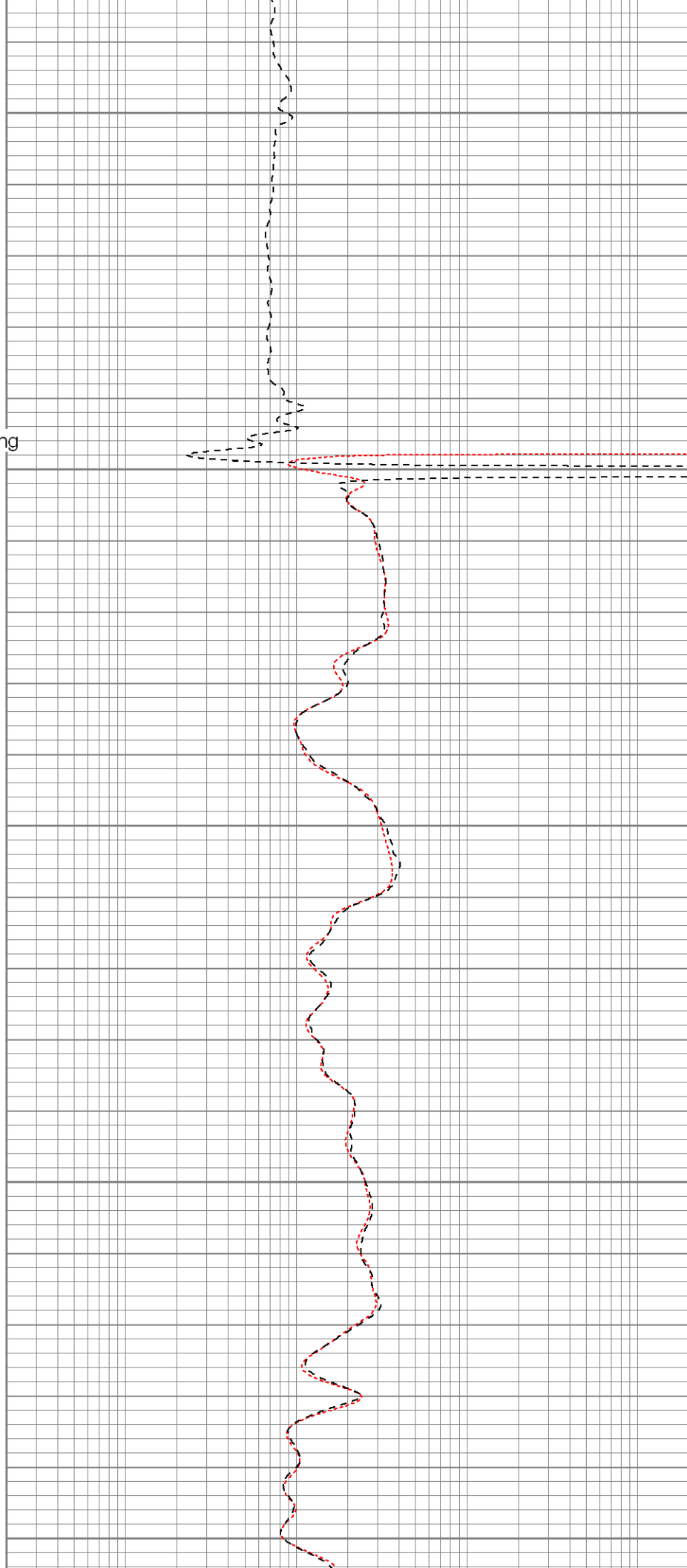
Surface Casing

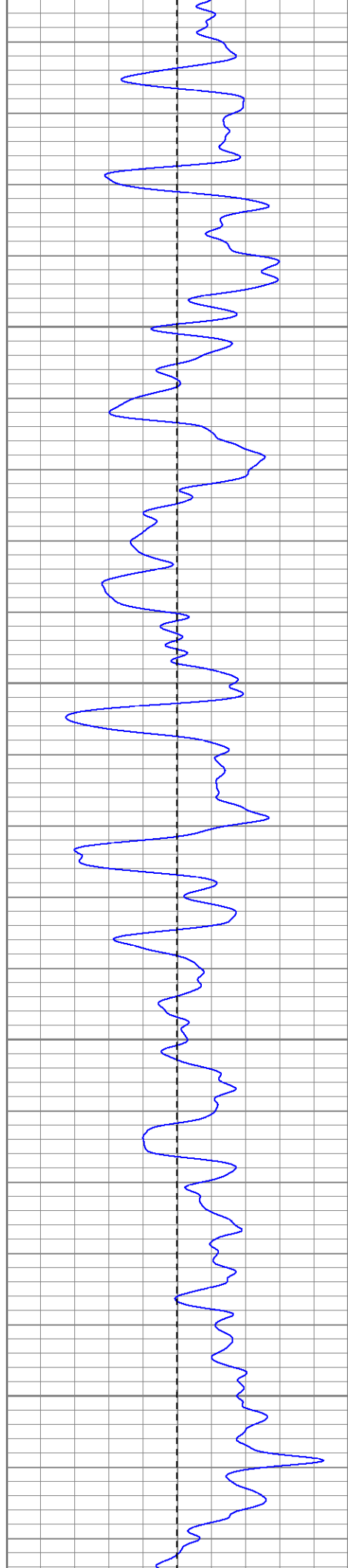
500

550

600

650



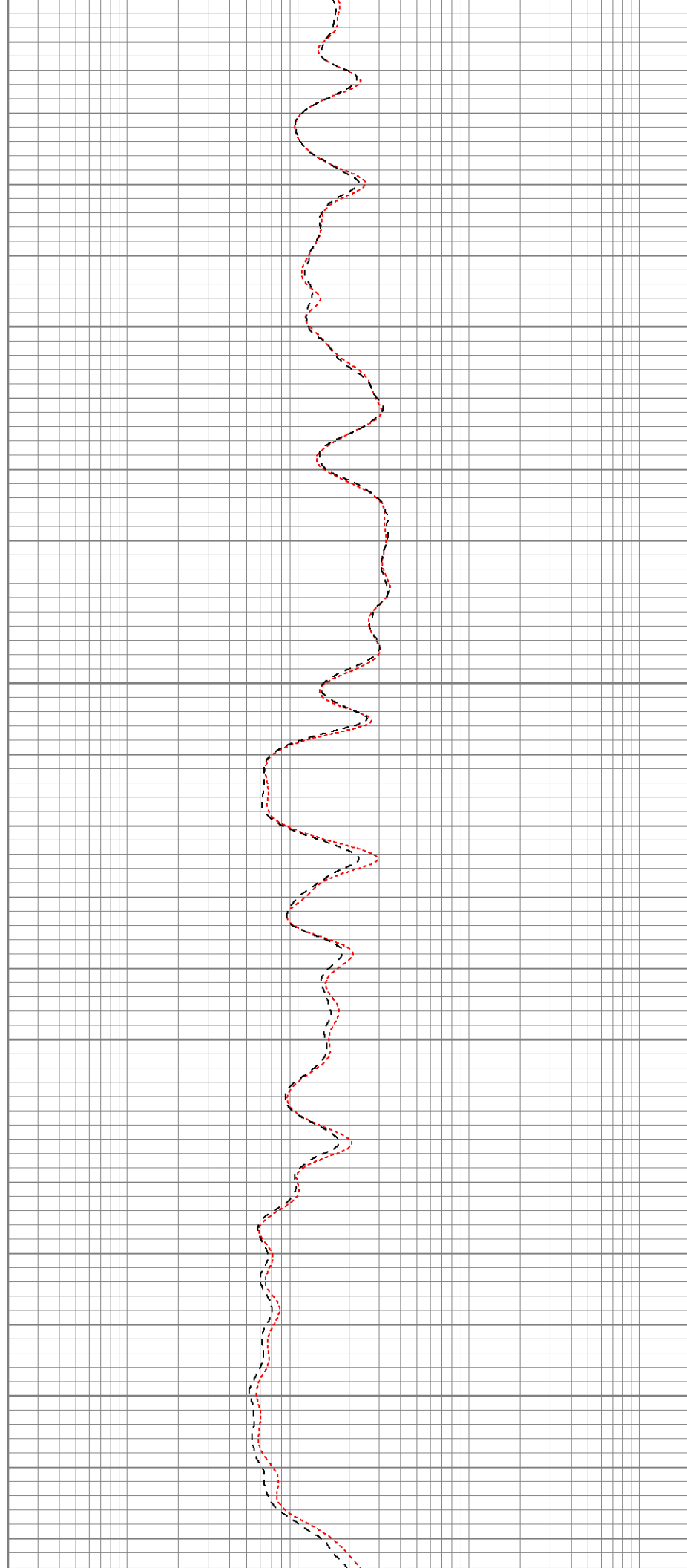


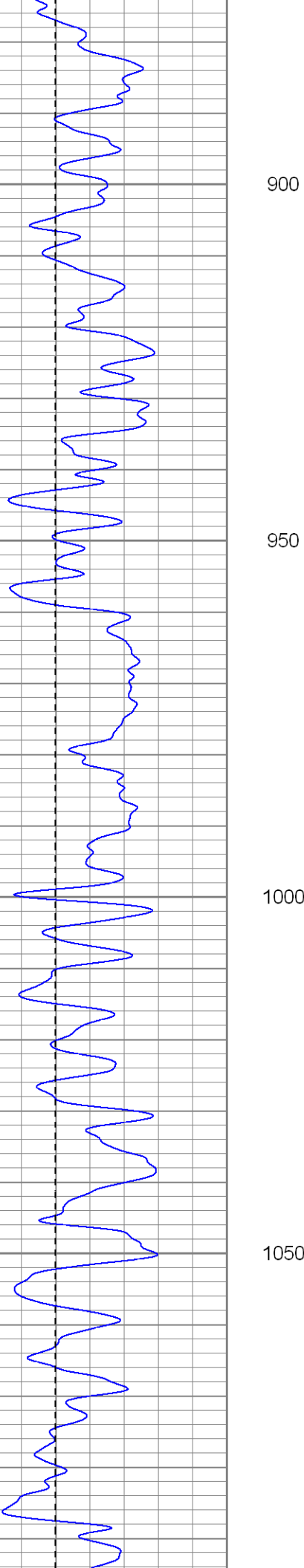
700

750

800

850



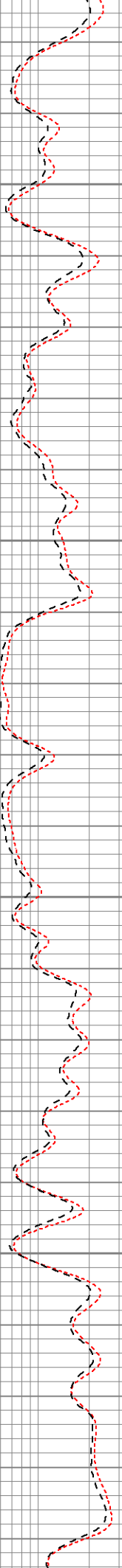


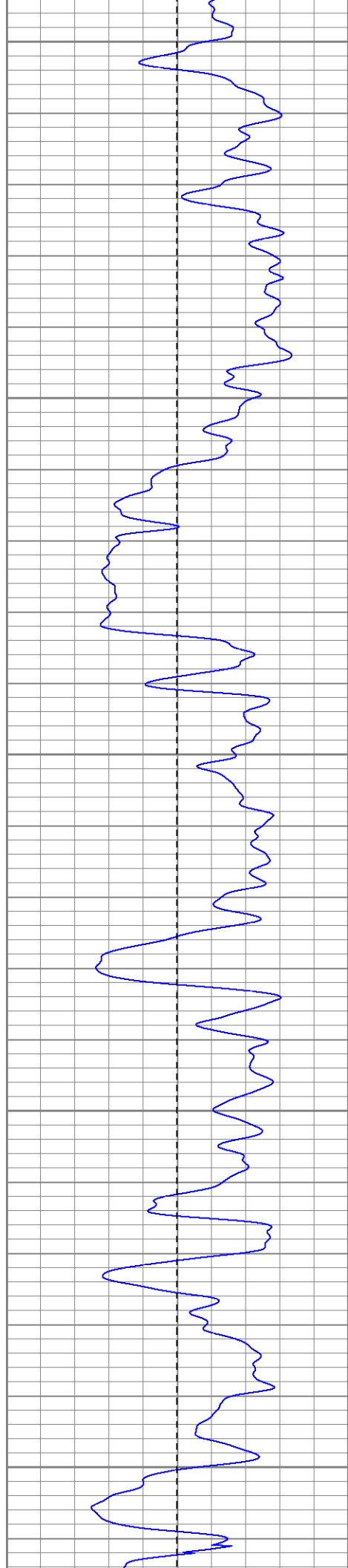
900

950

1000

1050





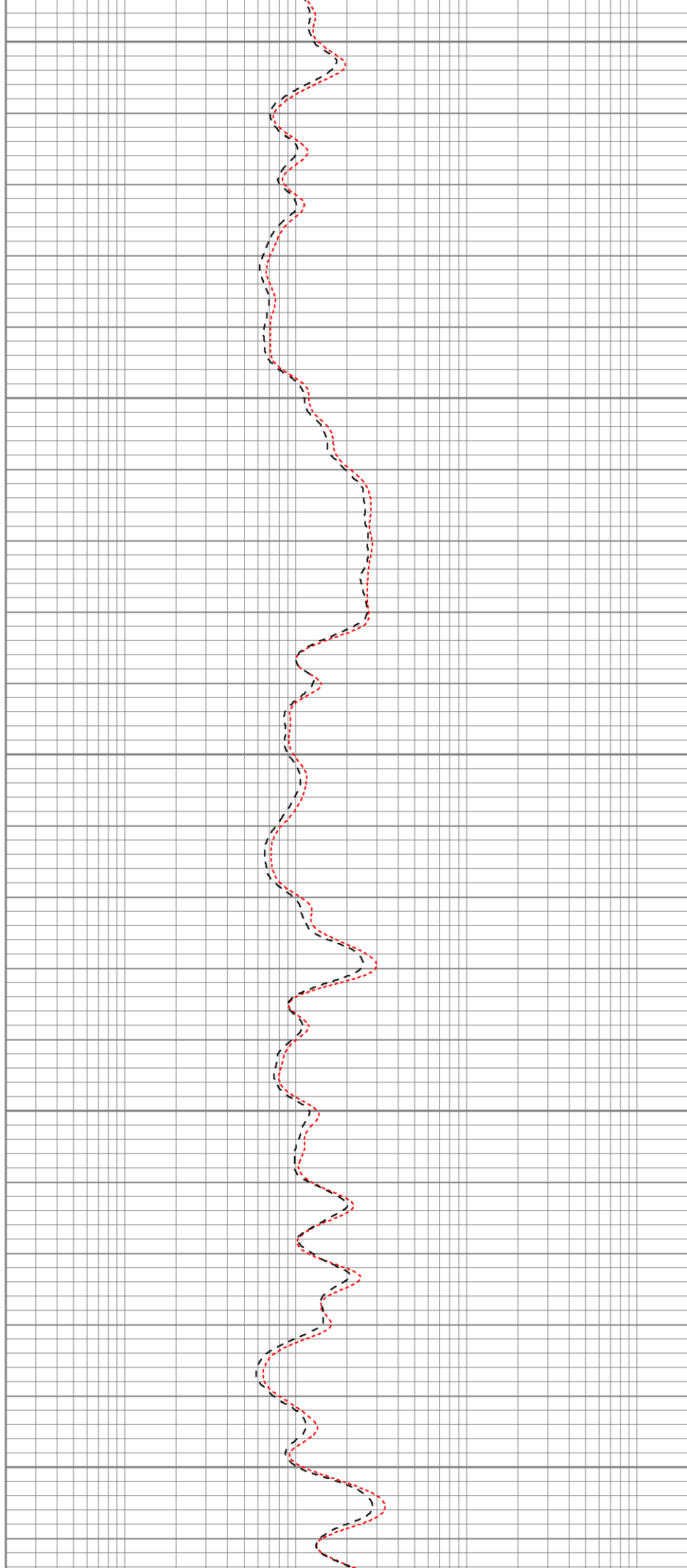
1100

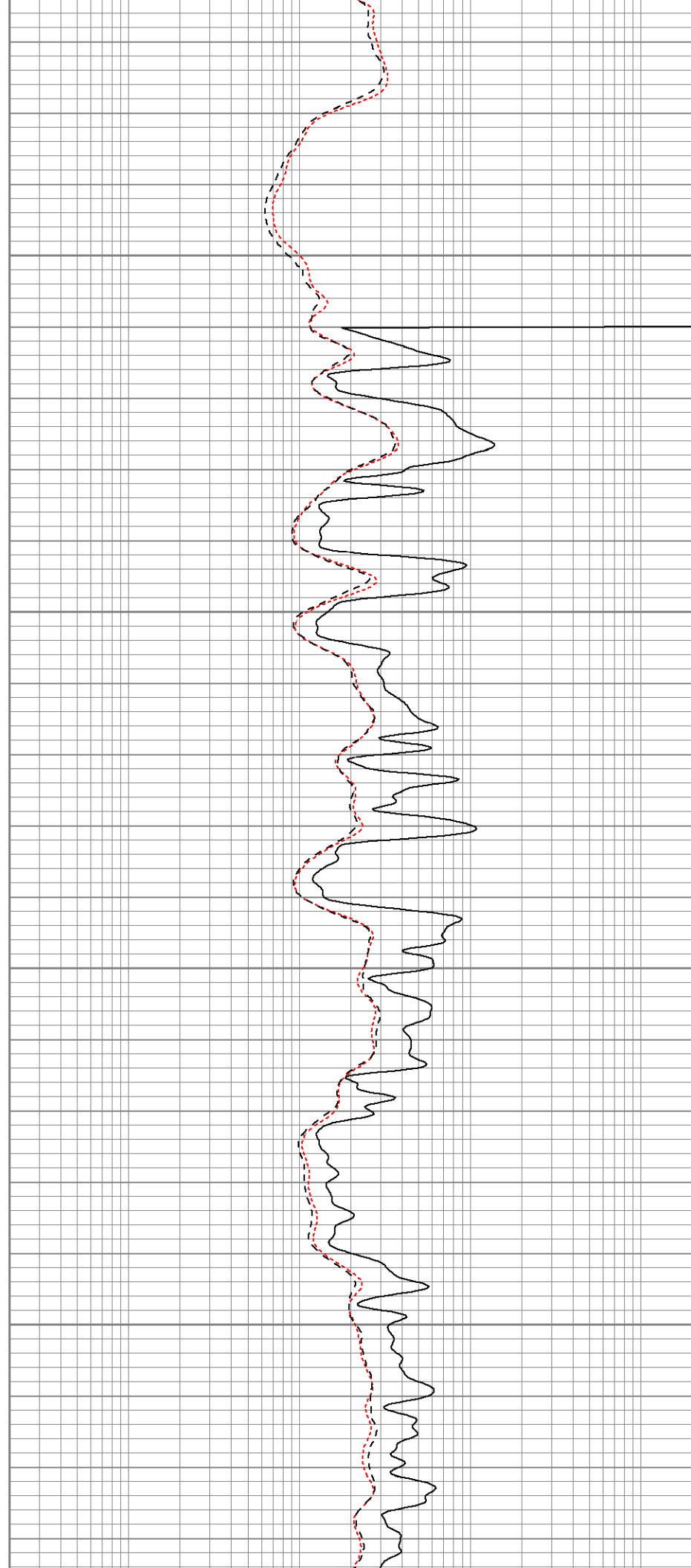
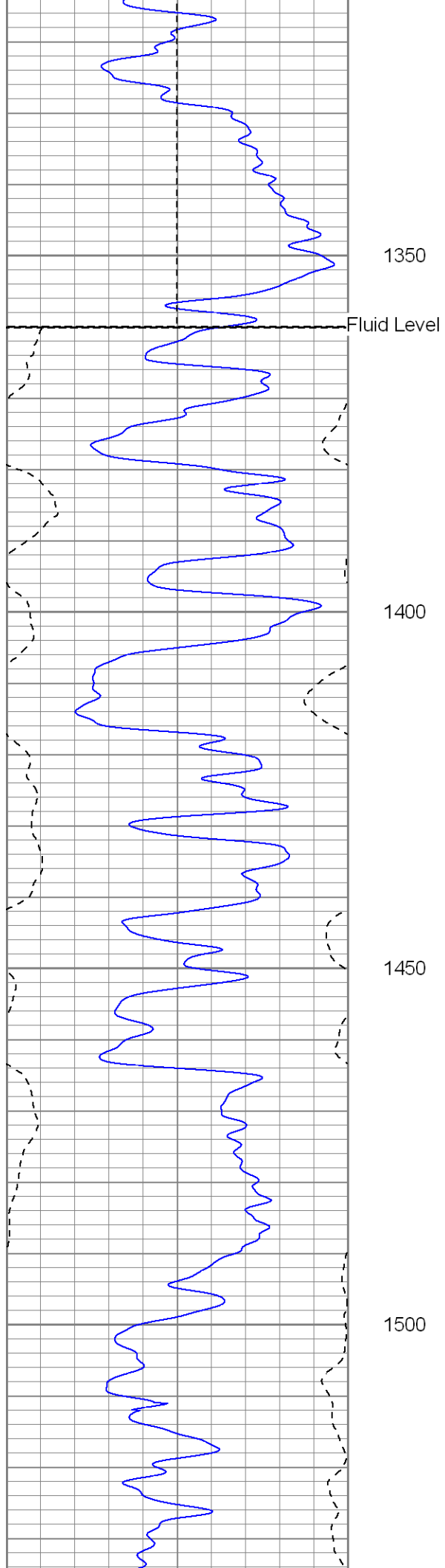
1150

1200

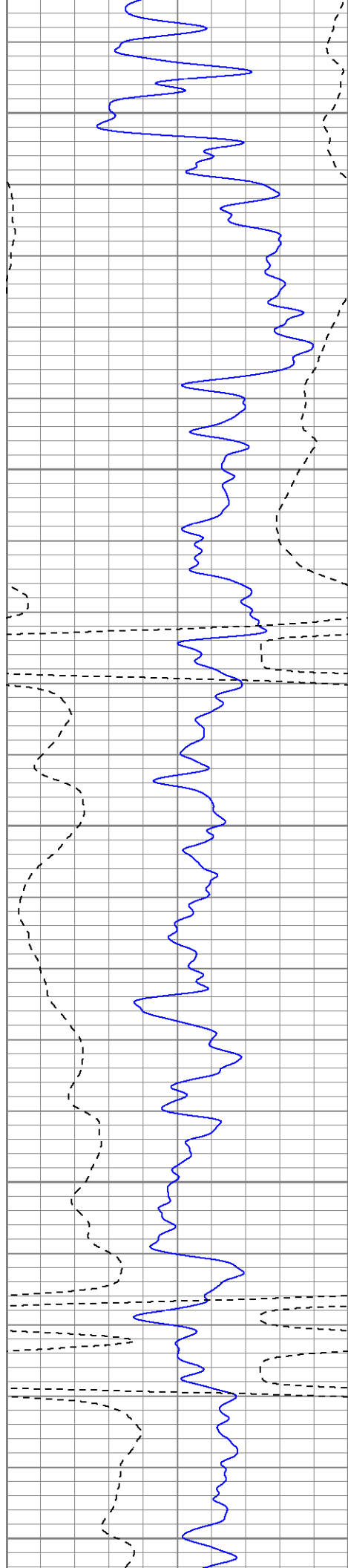
1250

1300









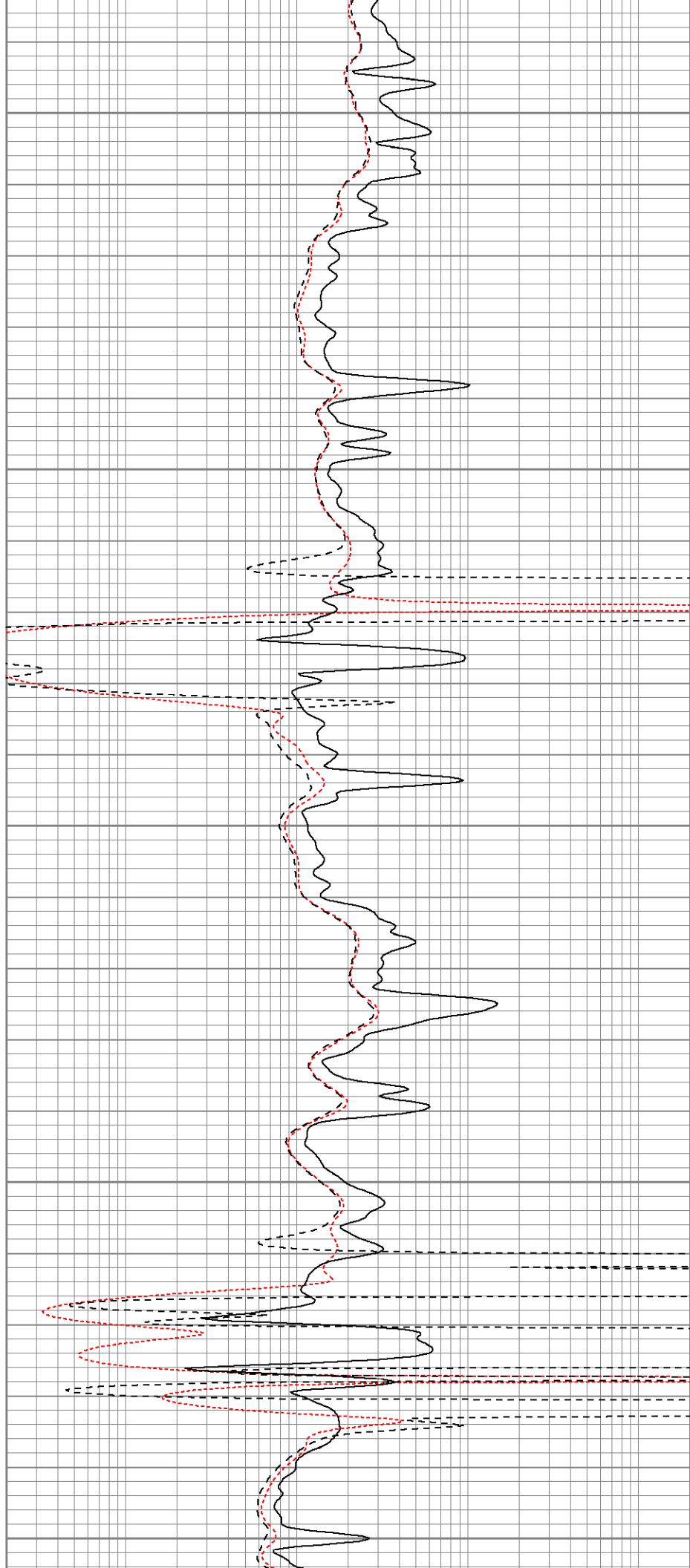
1550

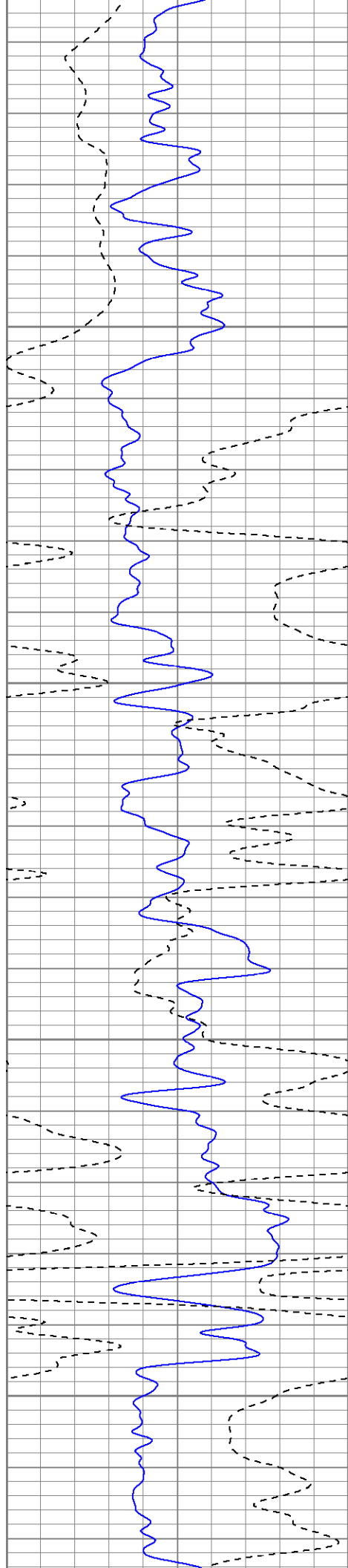
1600

1650

1700

1750



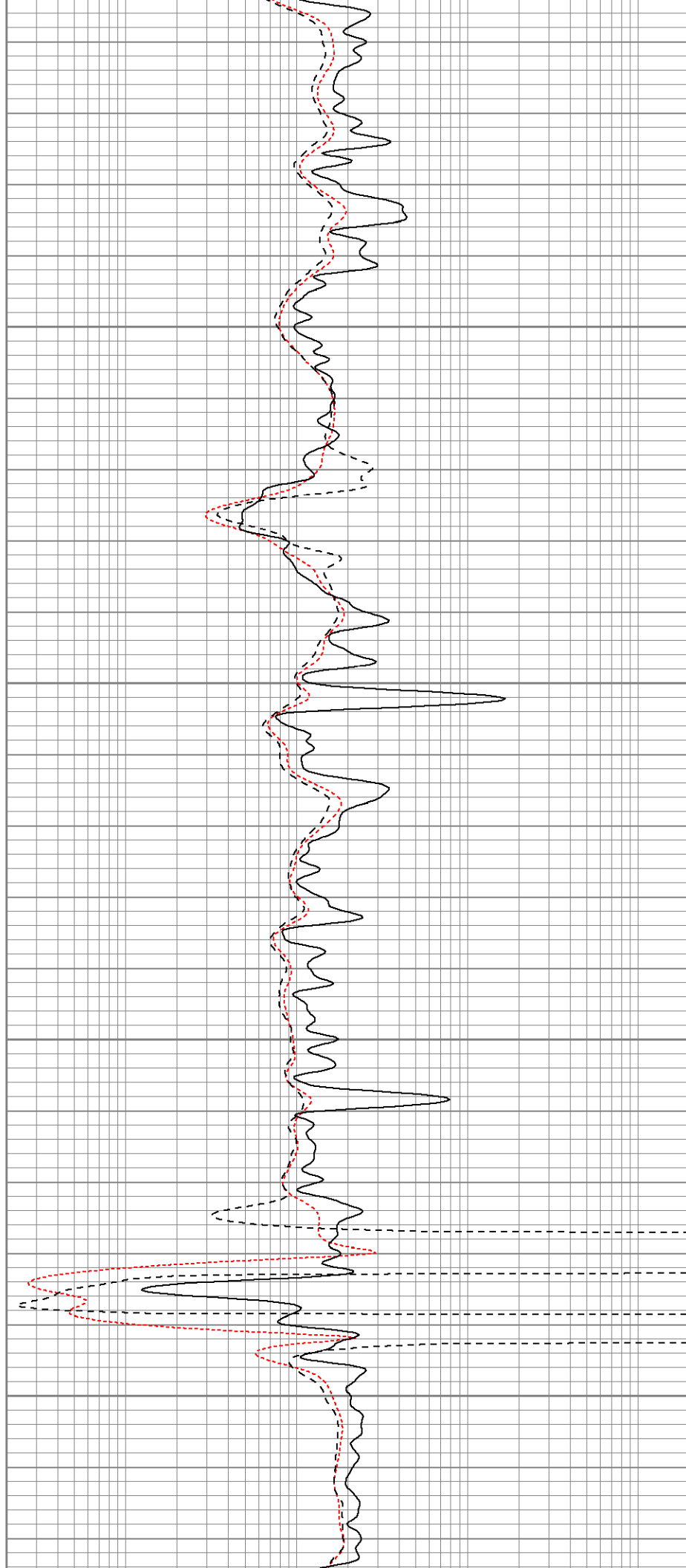


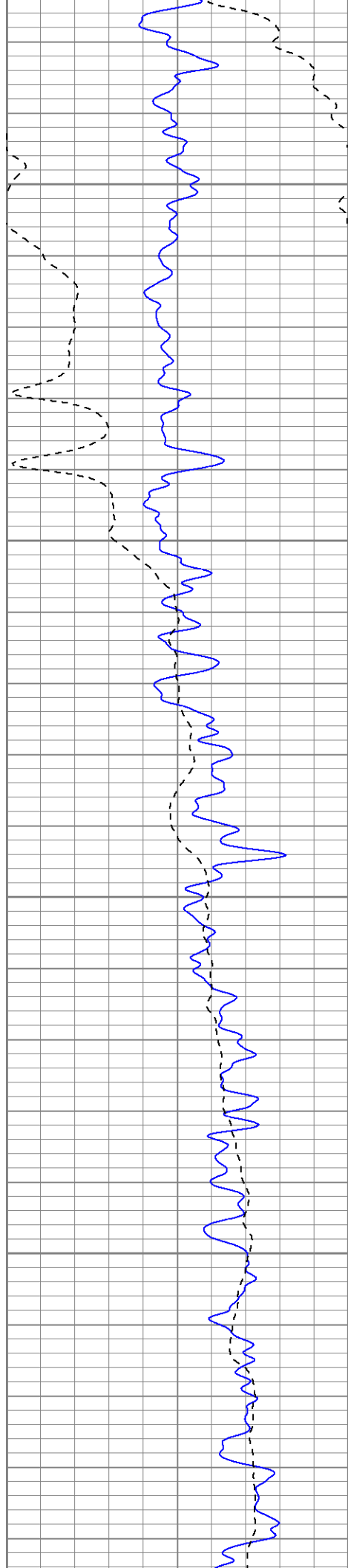
1800

1850

1900

1950



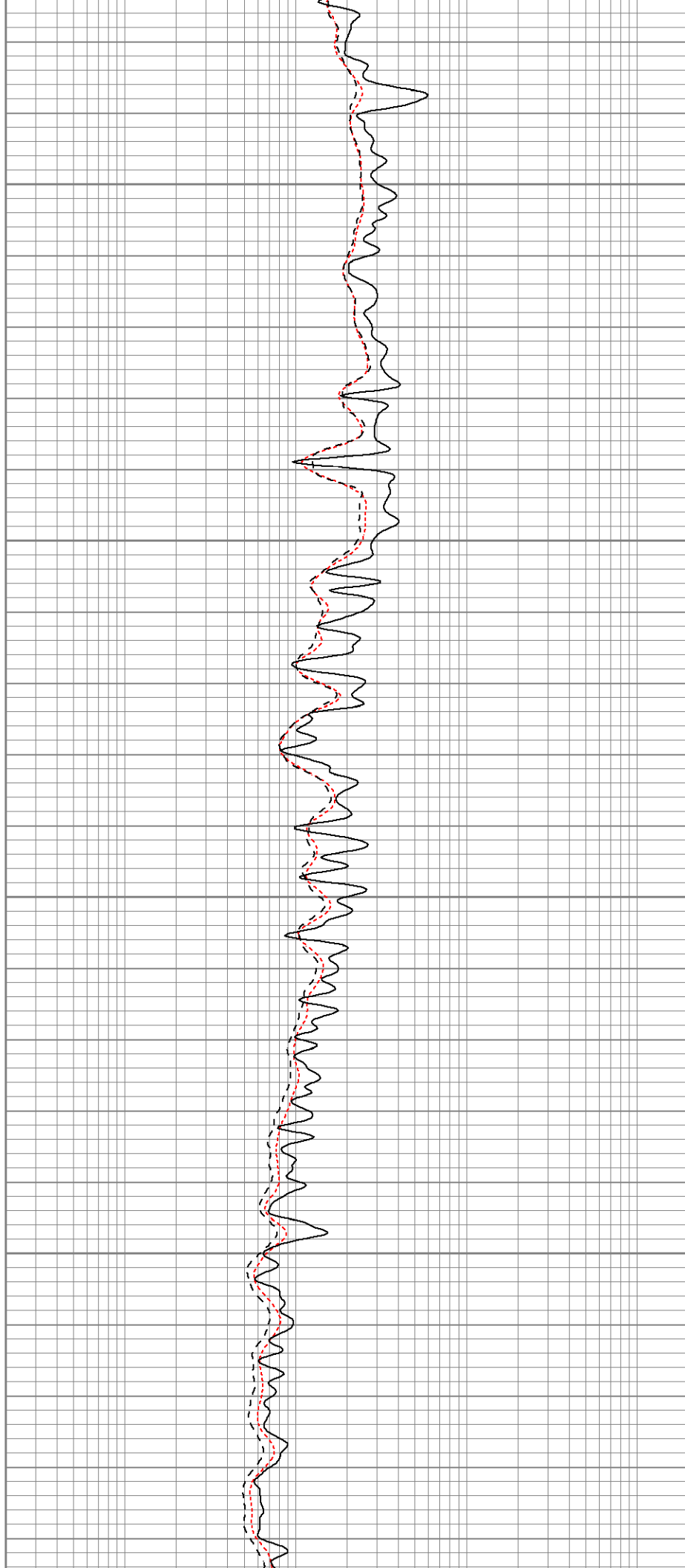


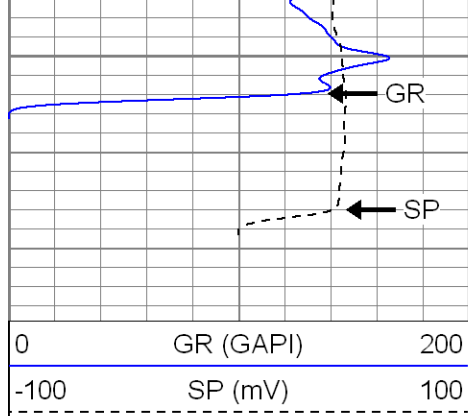
2000

2050

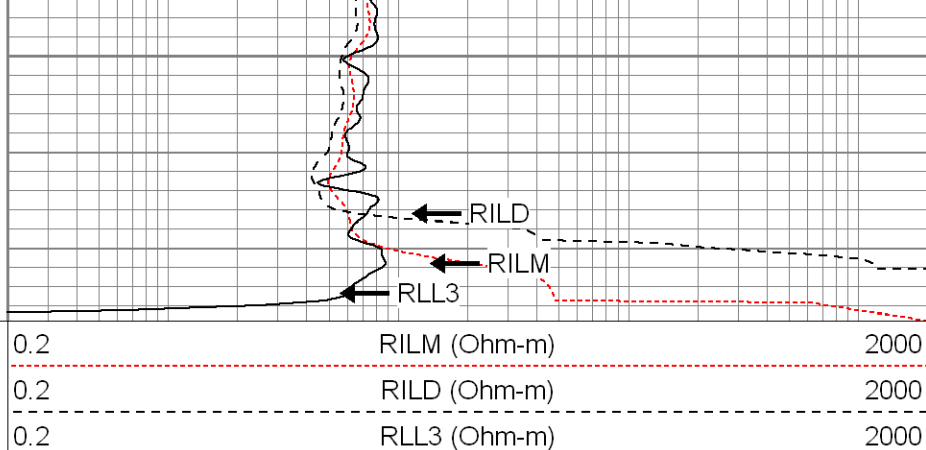
2100

2150





2200



**SUPERIOR**

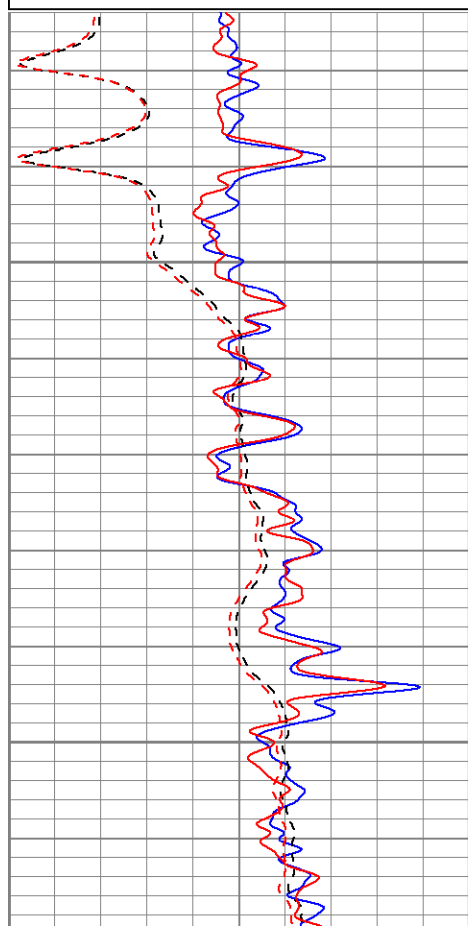
Black Lick, Pa.  
Mercer, Pa.  
Wooster, Oh.  
Cleveland, Ok.  
Trinidad, Co.

# Repeat Section

Database File: xtone2501.db  
Dataset Pathname: pass3.1  
Presentation Format: dil  
Dataset Creation: Thu Aug 09 12:05:03 2007 by Calc Open-Cased 061129  
Charted by: Depth in Feet scaled 1:240

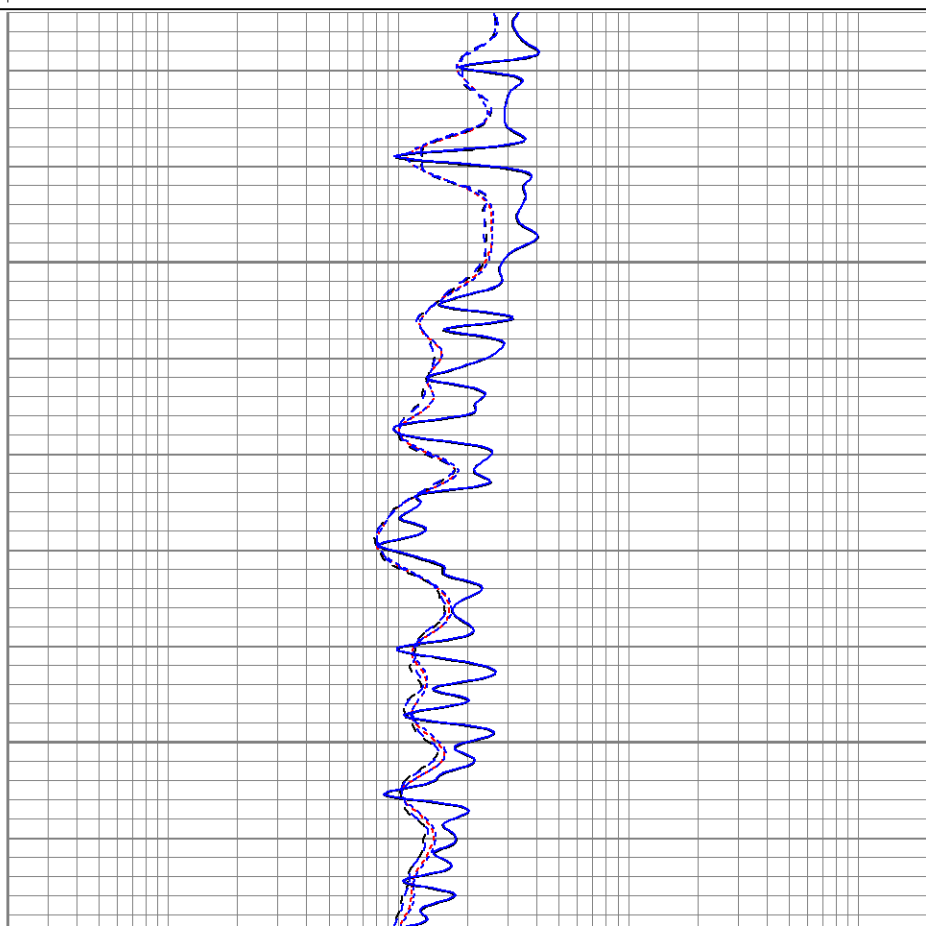
0	GR (GAPI)	200
-100	SP (mV)	100
0	GR-repeat (GAPI)	200
-100	SP-repeat (mV)	100
0	GR-repeat (GAPI)	200

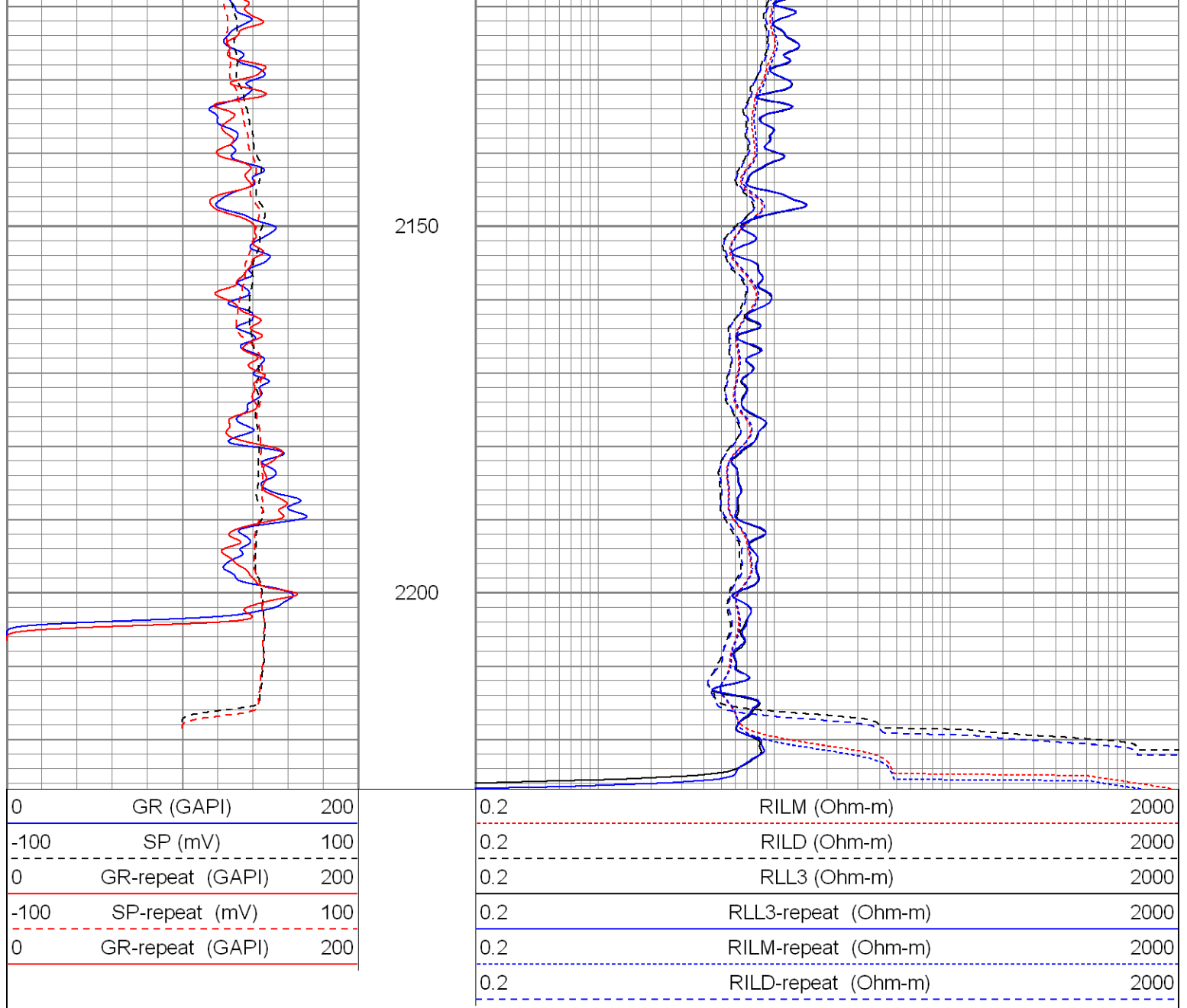
0.2	RILM (Ohm-m)	2000
0.2	RILD (Ohm-m)	2000
0.2	RLL3 (Ohm-m)	2000
0.2	RLL3-repeat (Ohm-m)	2000
0.2	RILM-repeat (Ohm-m)	2000
0.2	RILD-repeat (Ohm-m)	2000



2050

2100









Calibration Report									
Database File:		xtone2501.db							
Dataset Pathname:		pass4							
Dataset Creation:		Thu Aug 09 09:53:07 2007 by Log Open-Cased 061129							
Dual Induction Calibration Report									
Serial-Model:					5375-G				
Surface Cal Performed:					Wed Aug 08 13:10:57 2007				
Downhole Cal Performed:					Thu Aug 09 09:45:00 2007				
Surface Calibration									
Readings				References			Results		
Loop:	Air	Loop		Air	Loop		m	b	
Deep	0.002	0.622	V	0.000	500.000	mmho-m	807.380	-1.996	
Medium	0.004	0.745	V	0.000	550.000	mmho-m	742.488	-3.313	
Internal:	Zero	Cal		Zero	Cal		m	b	
Deep	0.002	0.621	V	0.000	500.000	mmho-m	807.436	-1.769	
Medium	0.004	0.745	V	0.000	550.000	mmho-m	742.510	-3.182	

Medium	0.004	0.745	V	0.000	550.000	mmho-m	742.818	-3.183
Downhole Calibration								
			Readings		References		Results	
Internal:	Zero	Cal		Zero	Cal		m	b
Deep	0.000	0.000	mmho-m	-0.227	499.739	mmho-m	1.000	0.000
Medium	0.000	0.000	mmho-m	-0.131	549.624	mmho-m	1.000	0.000
Shallow	2.506	0.009	V	500.000	2.000	Ohm-m	150.000	0.000

Gamma Ray Calibration Report								
Serial Number:			2001					
Tool Model:			OH					
Performed:			Wed Aug 08 12:47:02 2007					
Calibrator Value:			1.0		GAPI			
Background Reading:			0.0		cps			
Calibrator Reading:			1.0		cps			
Sensitivity:			0.2500		GAPI/cps			

Sensor	Offset (ft)	Schematic	Description	Len (ft)	OD (in)	Wt (lb)
GR	22.83		None	0.75	1.50	5.00
			GR-OH (2001) SIE	3.50	3.25	40.00
CILD SP	10.60 10.60		DIL-G (5375) Gearhart	20.83	4.00	345.00
CILM	6.89					
RLL3	1.70					
Dataset: xtone2501.db: field/well/run1/pass4						
Total Length: 25.08 ft						
Total Weight: 390.00 lb						
O.D. 4.00 in						