

Patterson

**CEMENT
BOND
LOG**

Company		XTO Energy Inc.					
Well		Golden Eagle 20-03					
Field		Purgatoire River					
County		Las Animas					
State		Colorado					
Location:		API # : 05 071 08734 00					
SEC 20 TWP 33S RGE 67W		temp.					
Permanent Datum		Ground Level					
Log Measured From		Ground Level					
Drilling Measured From		Ground Level					
Elevation		7757'					
K.B. -----		D.F. -----					
G.L. 7757'							
Date		03-28-06					
Run Number		One					
Depth Driller		2645'					
Depth Logger		2408'					
Bottom Logged Interval		2406'					
Top Log Interval		Surface					
Open Hole Size		7 7/8"					
Type Fluid		Water					
Density / Viscosity		///					
Max. Recorded Temp.		124					
Estimated Cement Top		104'					
Time Well Ready		10:45 a.m.					
Time Logger on Bottom		10:55 a.m.					
Equipment Number		T677					
Location		Trinidad					
Recorded By		L. Smith					
Witnessed By		Mr. Brian Cimsted					
Borehole Record		Tubing Record					
Run Number	Bit	From	To	Size	Weight	From	To
Casing Record	Size		Wgt/Ft		Top		Bottom
Surface String	8 5/8"				0		229'
Prot. String							
Production String							
Liner							

>>> Fold Here >>>

All interpretations are opinions based on inferences from electrical or other measurements and we cannot and do not guarantee the accuracy or correctness of any interpretation, and we shall not, except in the case of gross or willful negligence on our part, be liable or responsible for any loss, costs, damages, or expenses incurred or sustained by anyone resulting from any interpretation made by any of our officers, agents or employees. These interpretations are also subject to our general terms and conditions set out in our current Price Schedule.

Comments

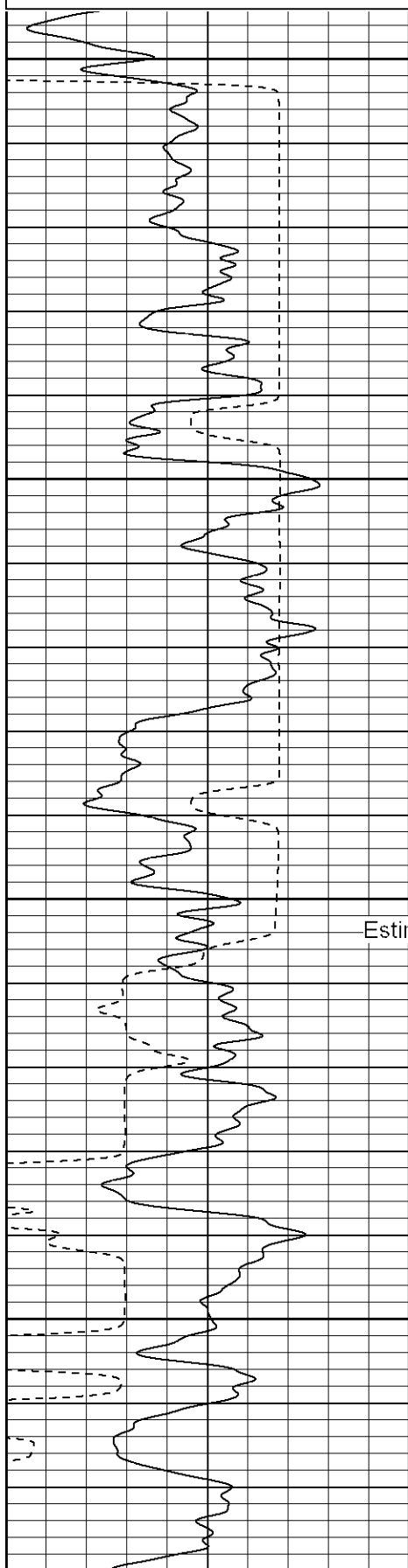
4 miles past Weston, turn right at Missy Chaves rd., follow rd. to Tand turn right, at top of hill stay left to location.

Database File: xtoge2003032806b.db
Dataset Pathname: pass2.1
Presentation Format: cblrt
Dataset Creation: Tue Mar 28 11:58:14 2006 by Calc Warrior 7.0 STD Ope
Charted by: Depth in Feet scaled 1:240

0	GR (GAPI)	200
400	TT3 (usec)	200

0	AMP3 (mV)	100
18	CCL	-2
100	CBL5	1200

200	Variable Density	1200
-----	------------------	------



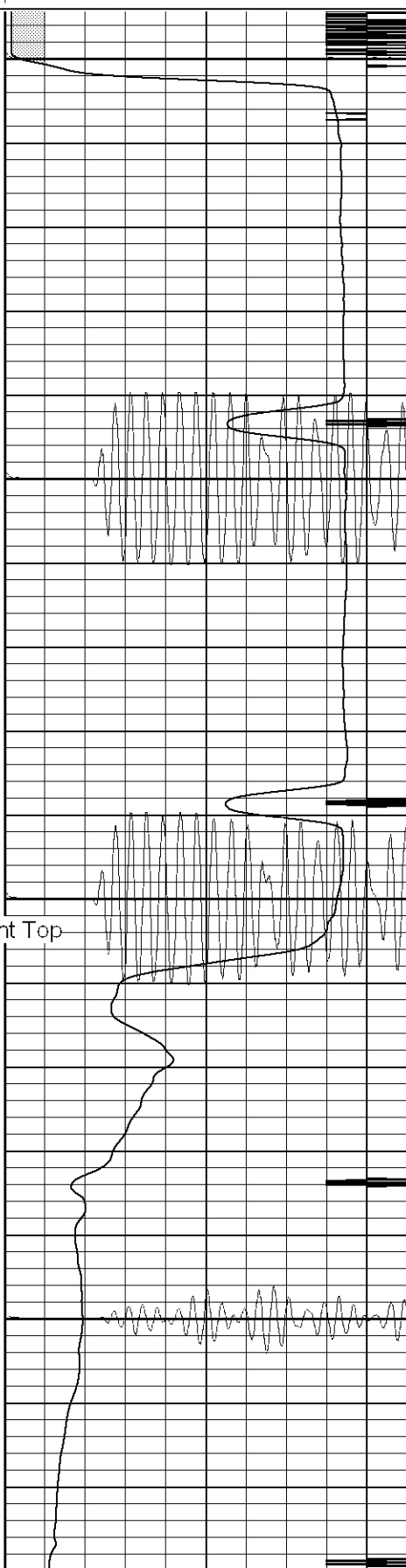
0

50

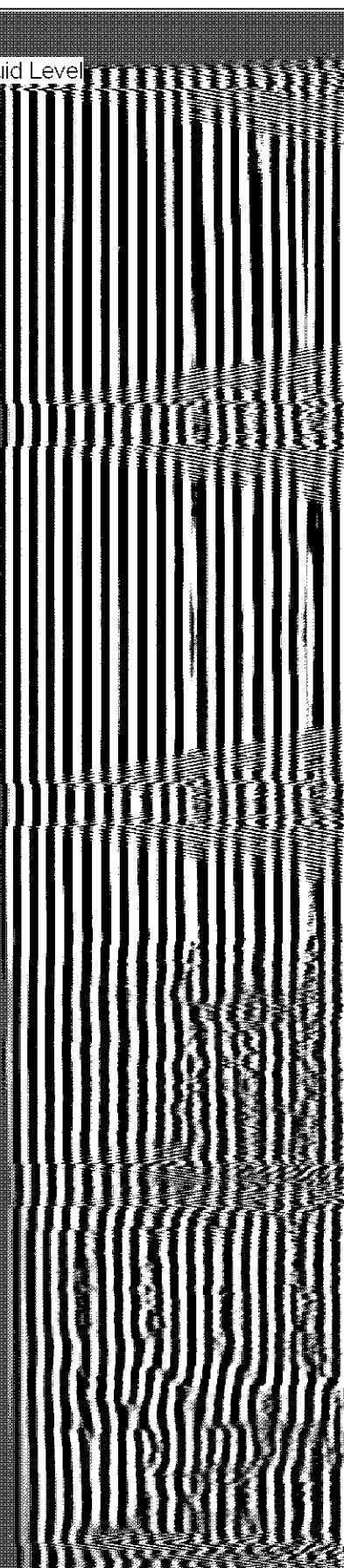
100

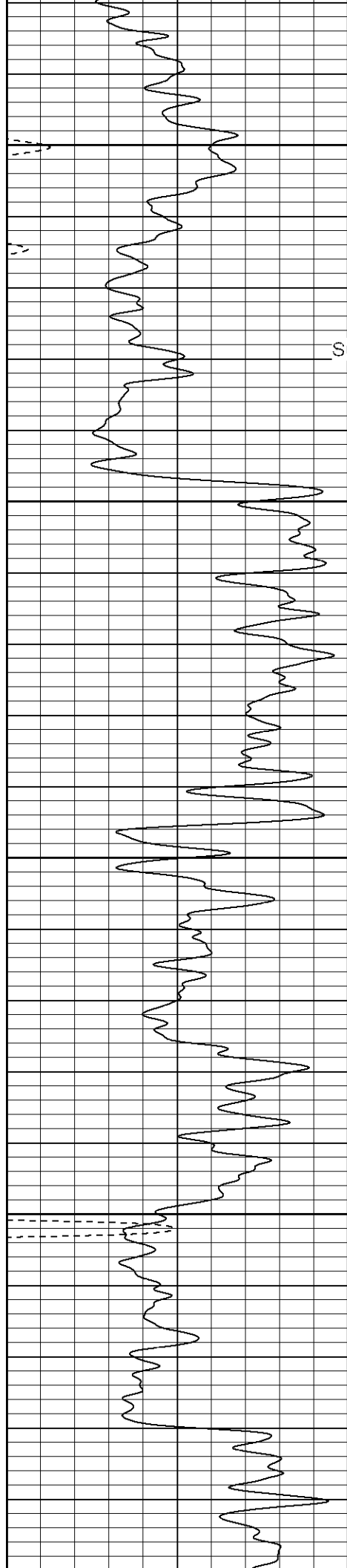
Estimated Cement Top

150



Fluid Level





Surface Casing

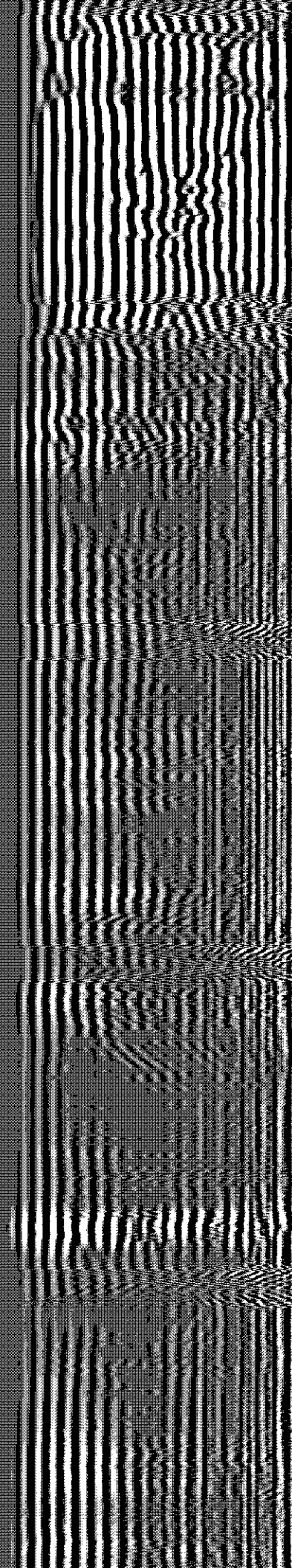
200

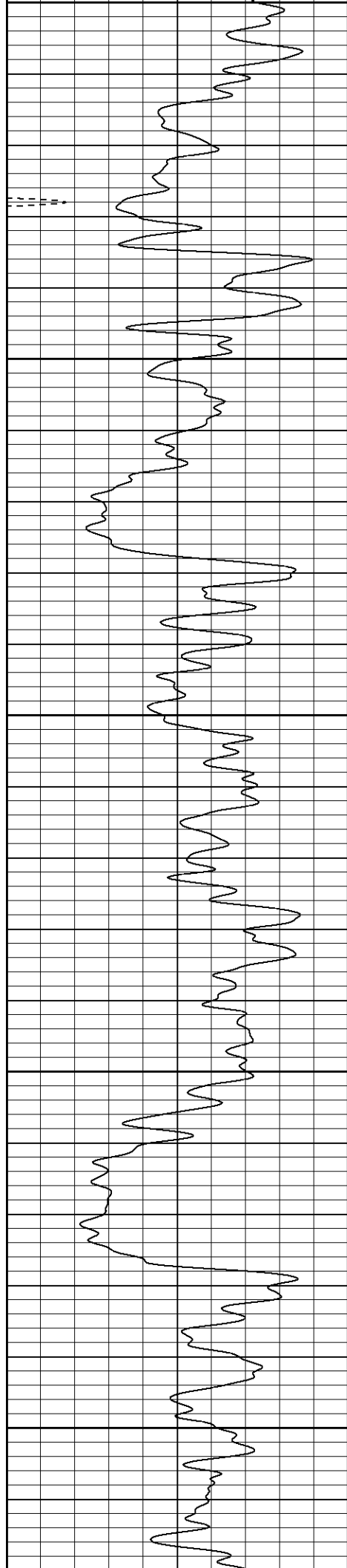
250

300

350

400





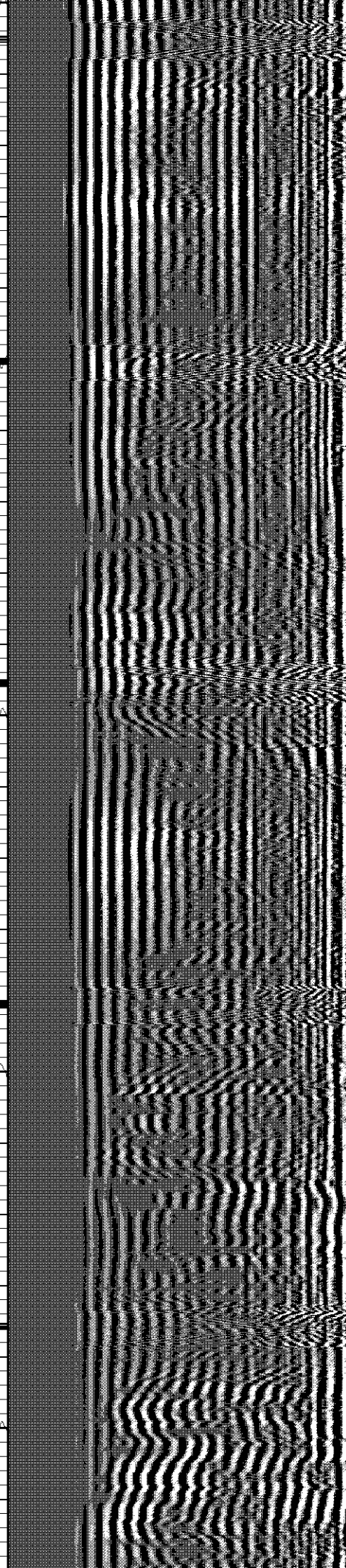
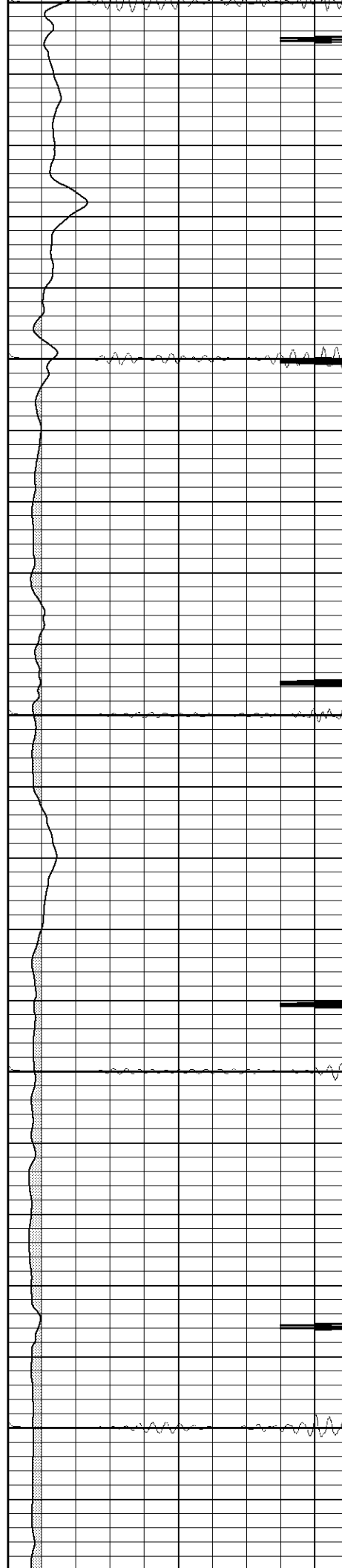
400

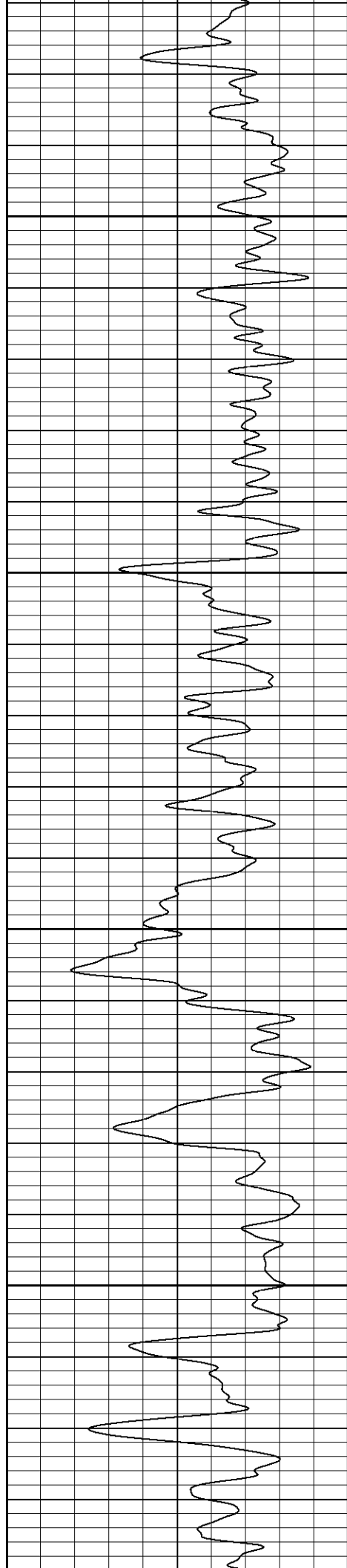
450

500

550

600



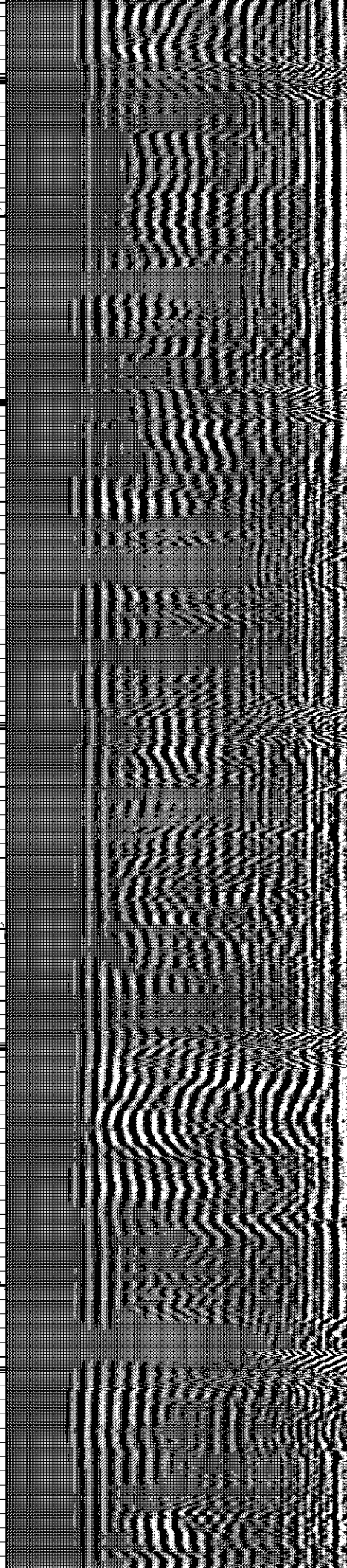
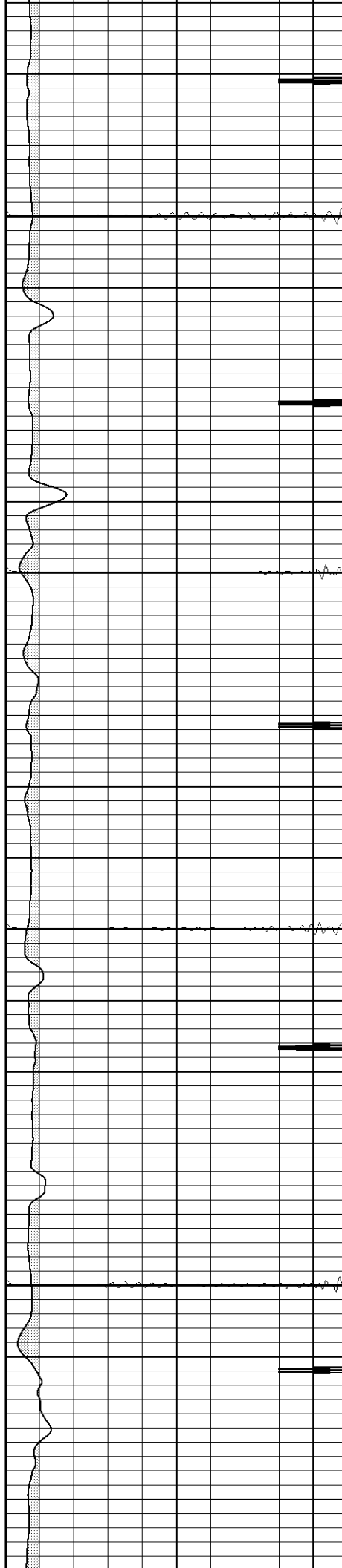


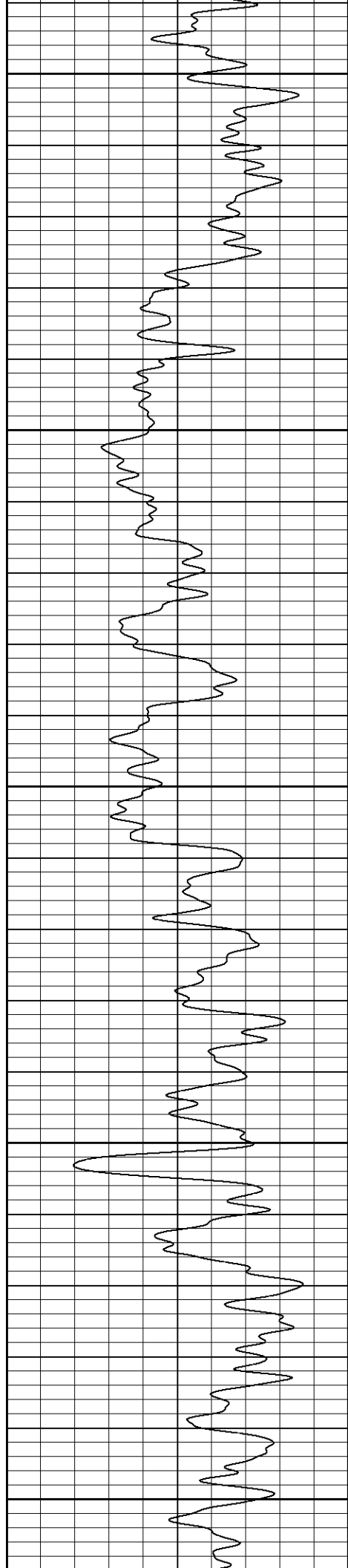
650

700

750

800





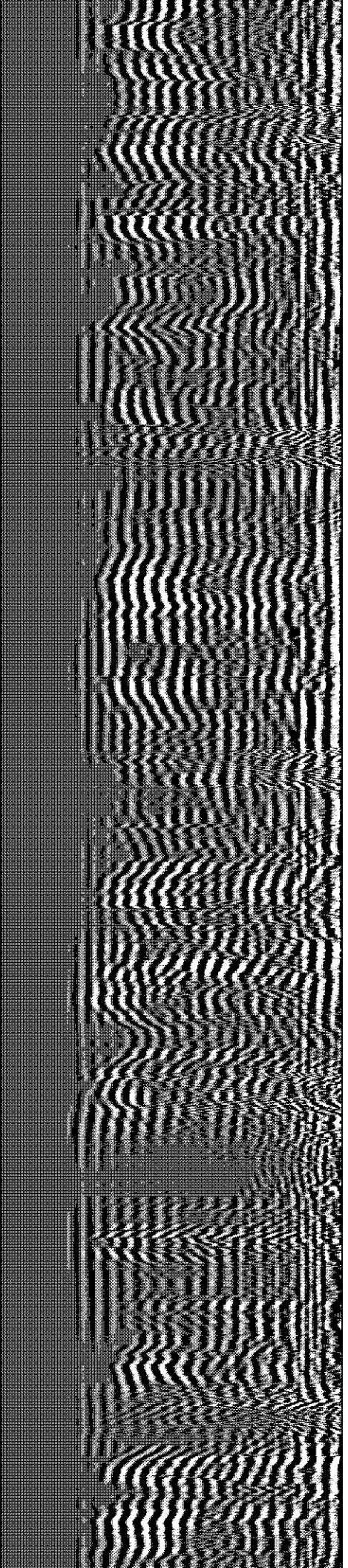
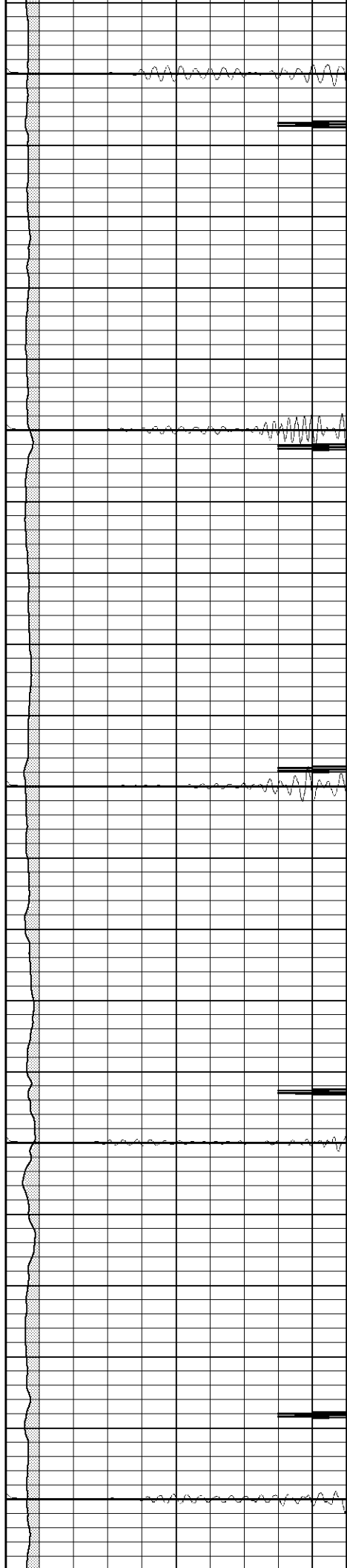
850

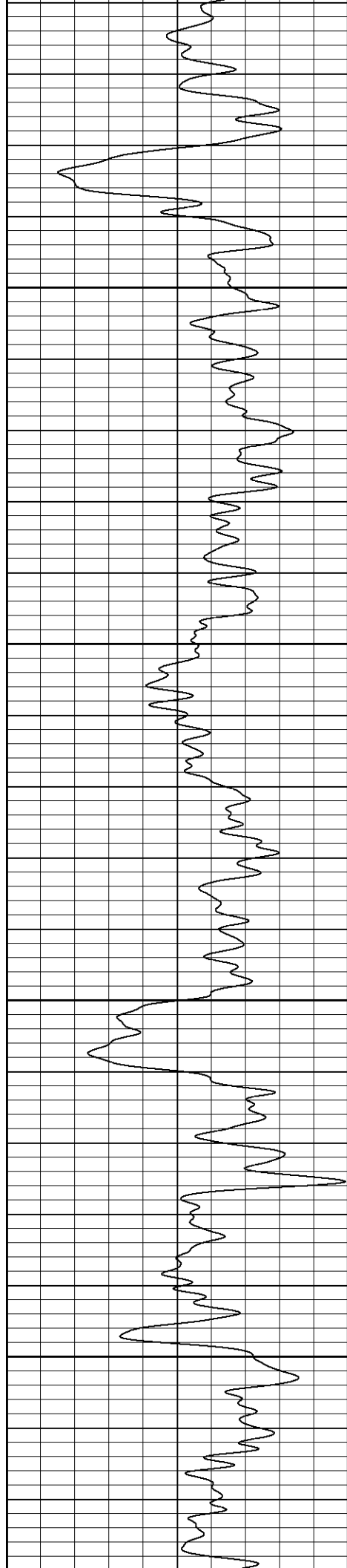
900

950

1000

1050



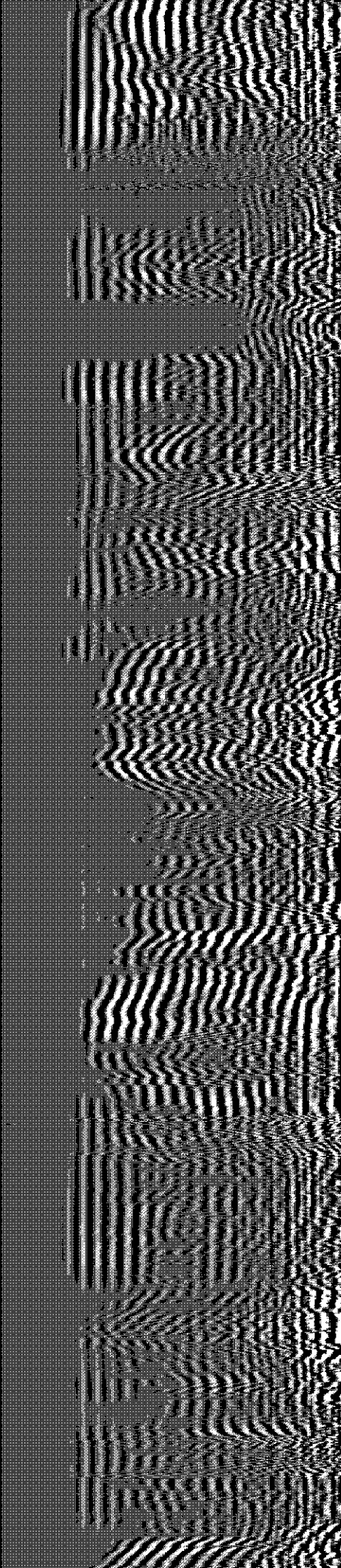
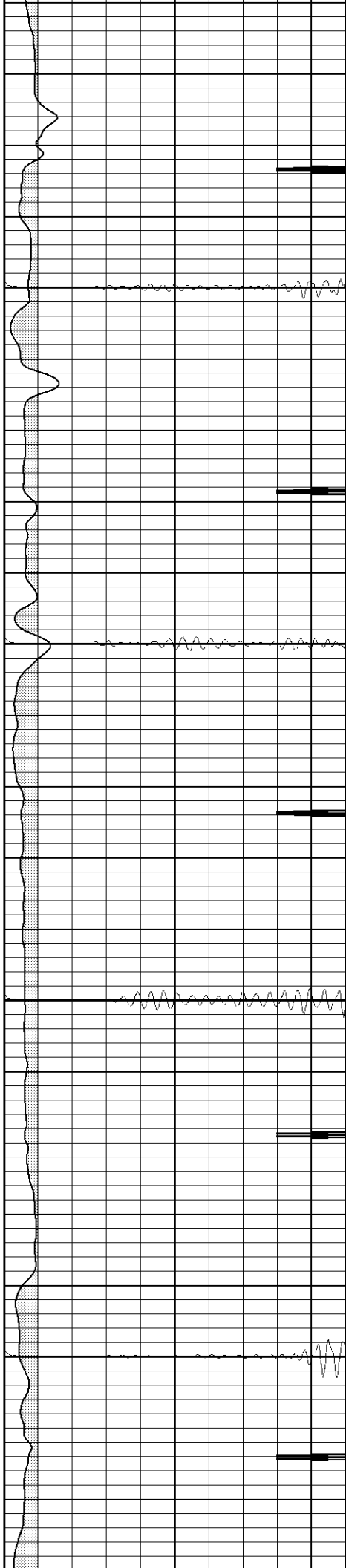


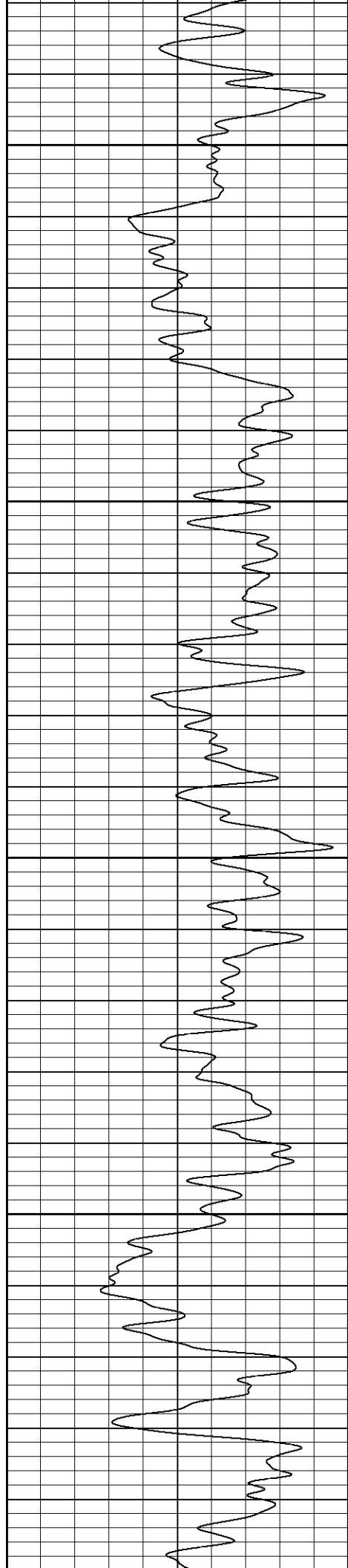
1100

1150

1200

1250





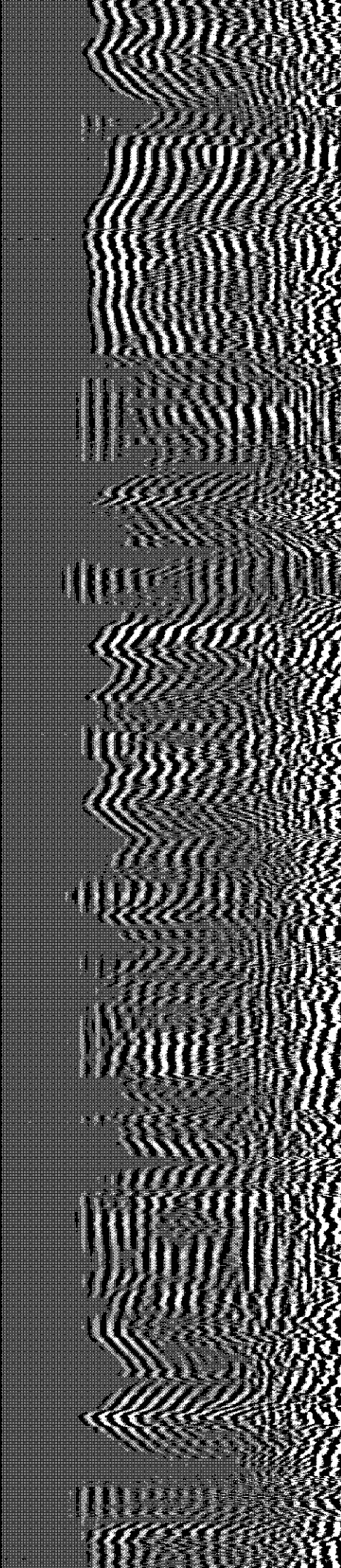
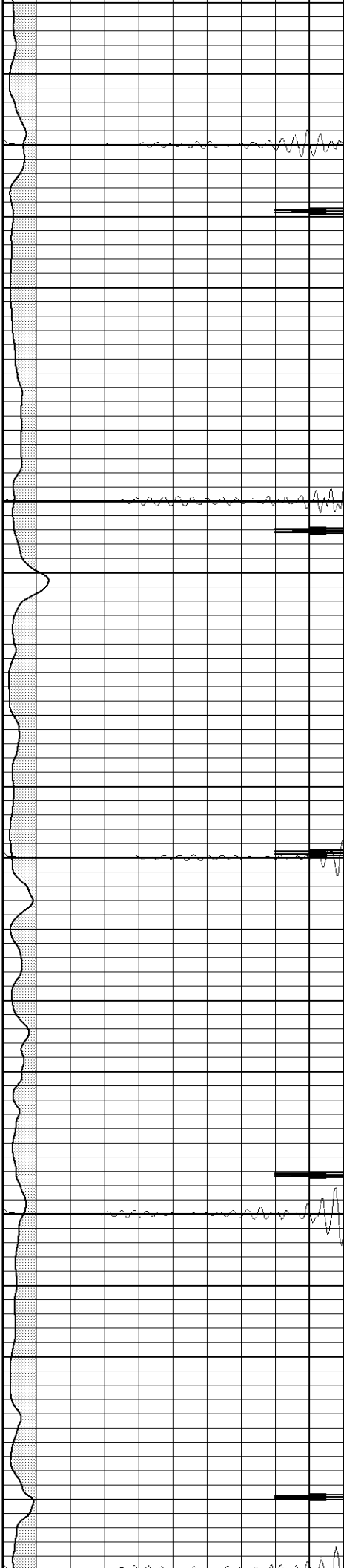
1300

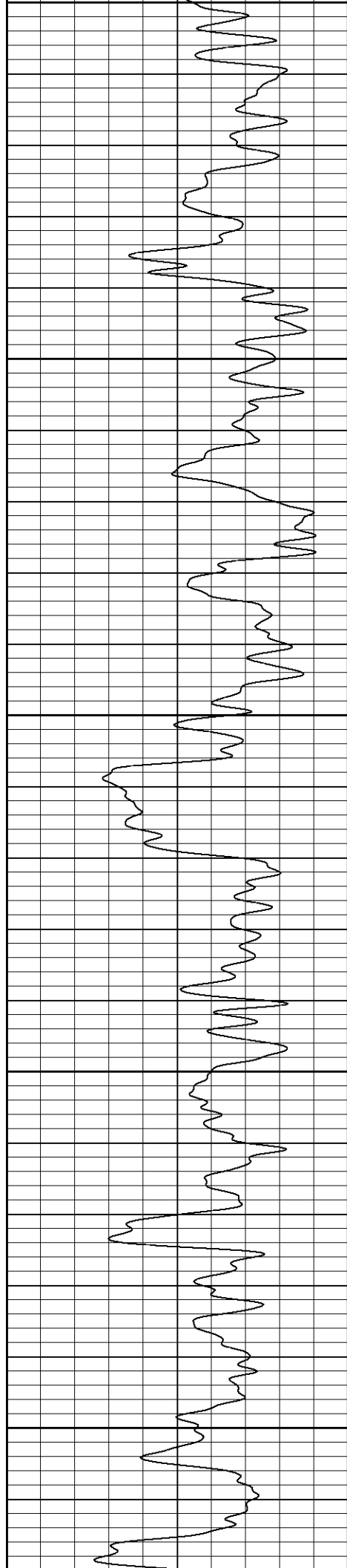
1350

1400

1450

1500





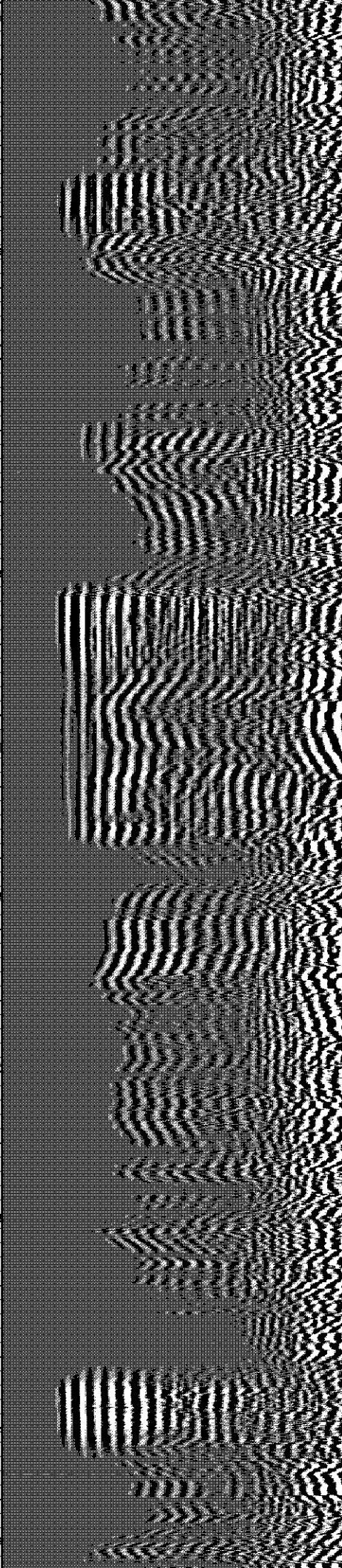
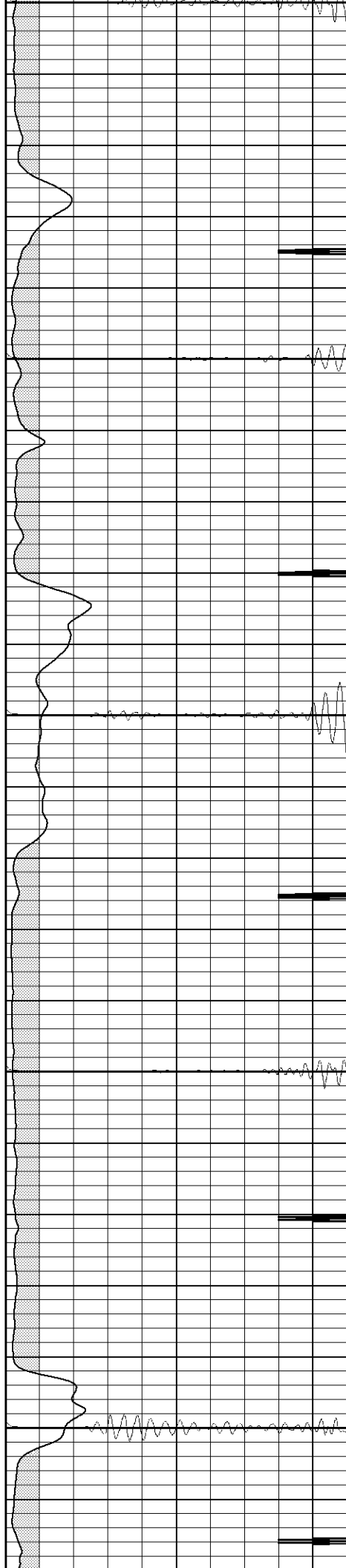
1500

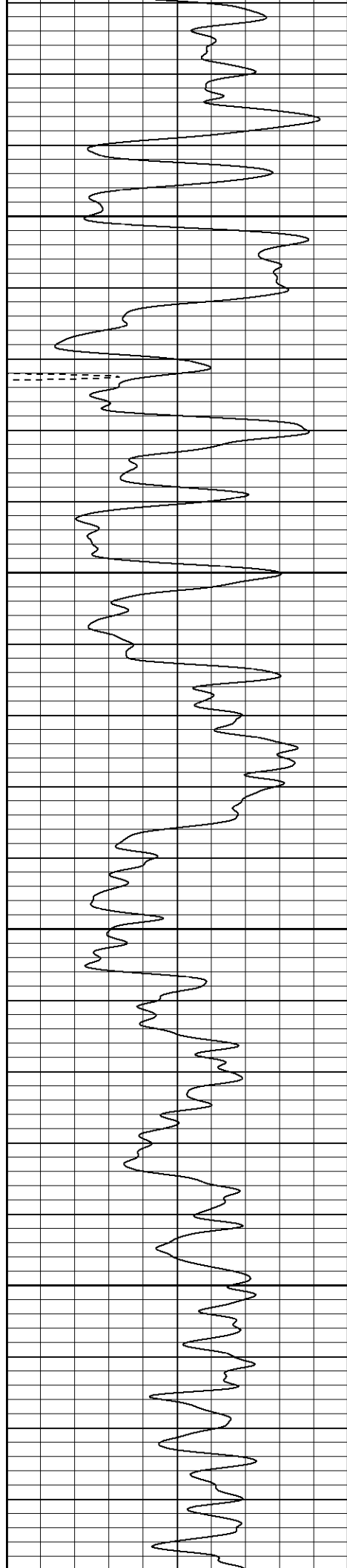
1550

1600

1650

1700



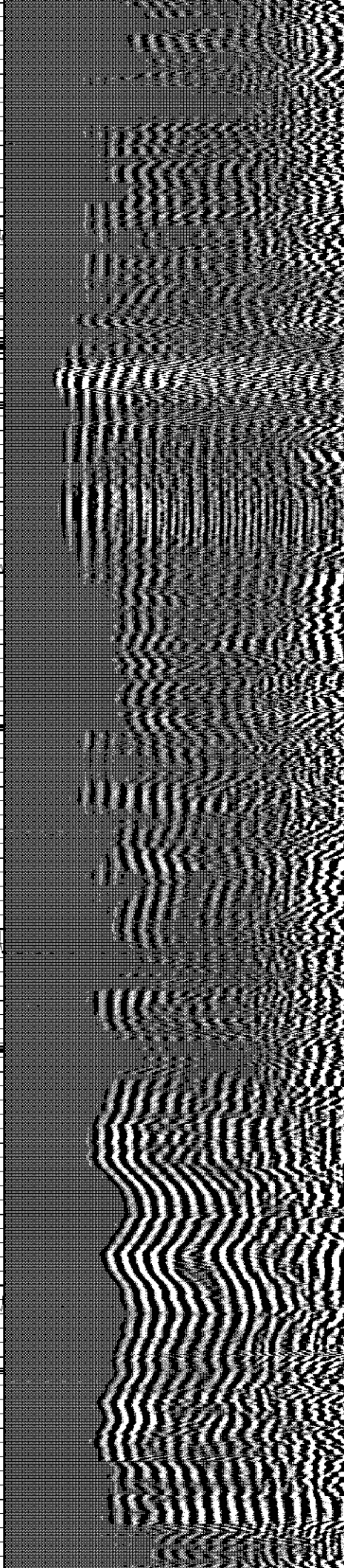
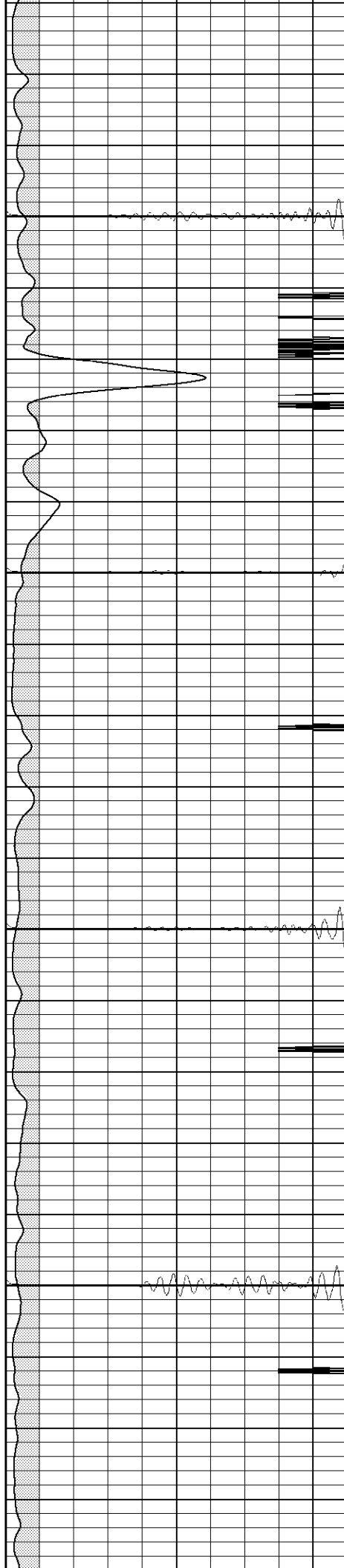


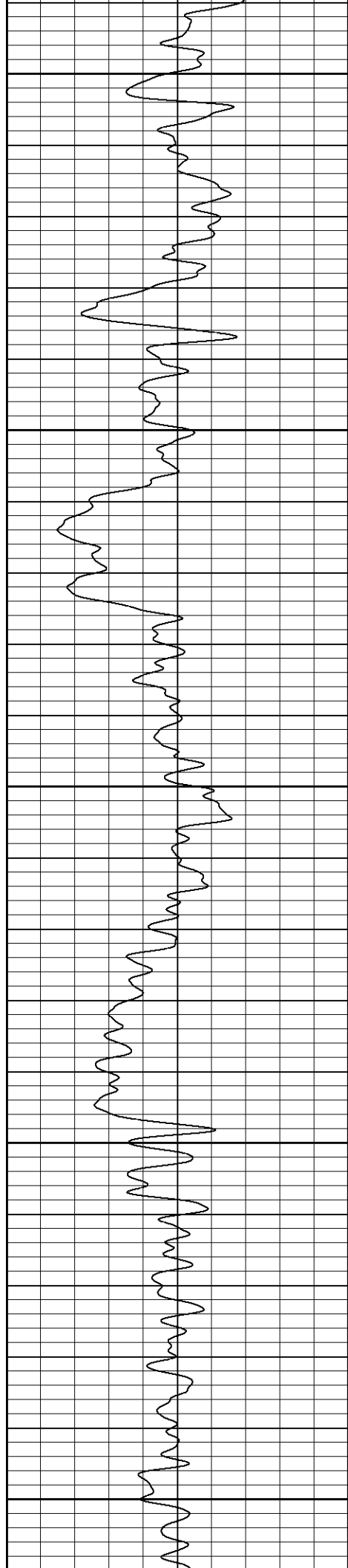
1750

1800

1850

1900





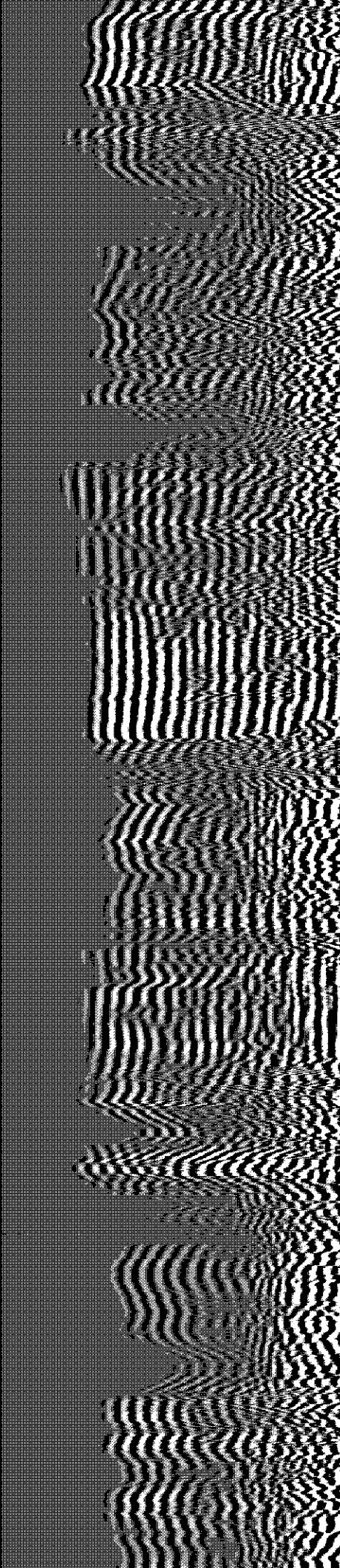
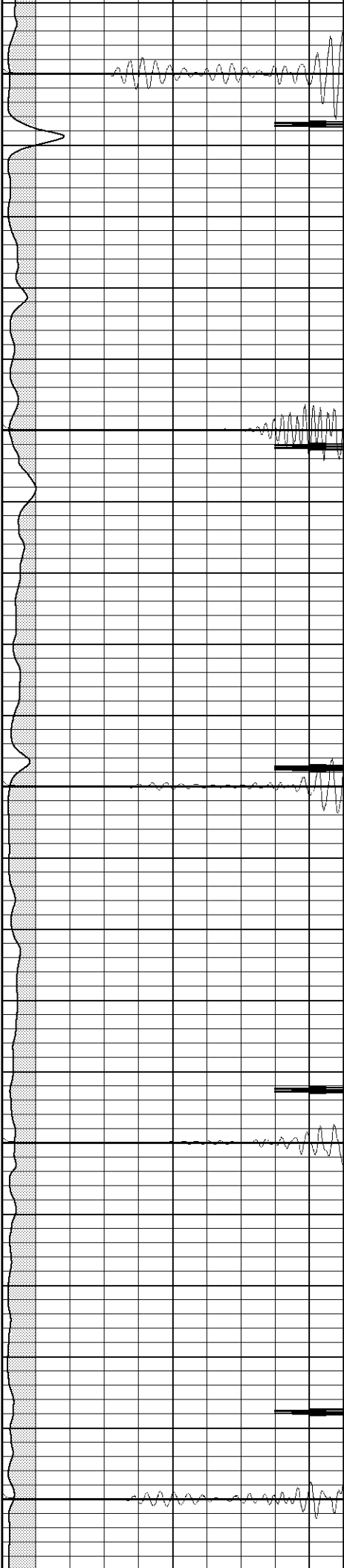
1950

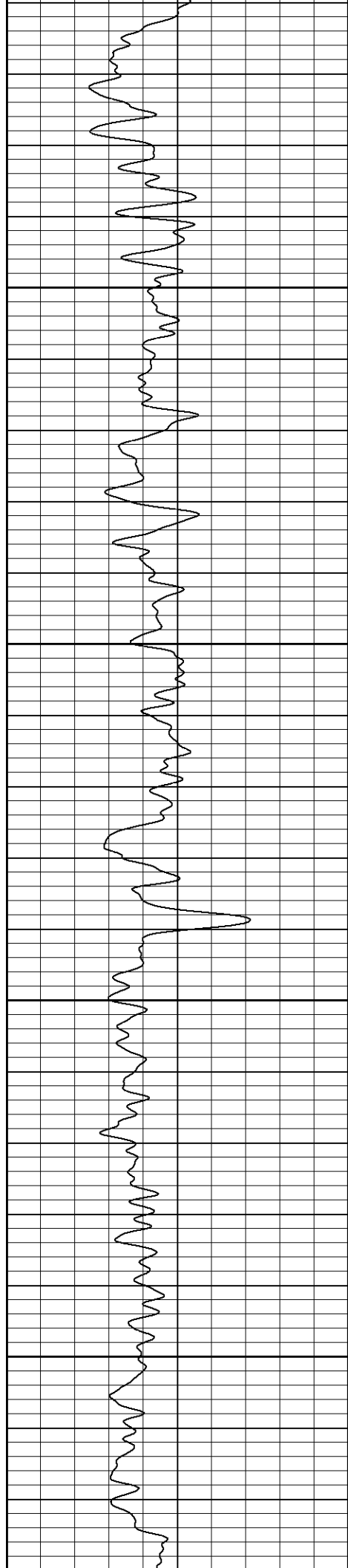
2000

2050

2100

2150



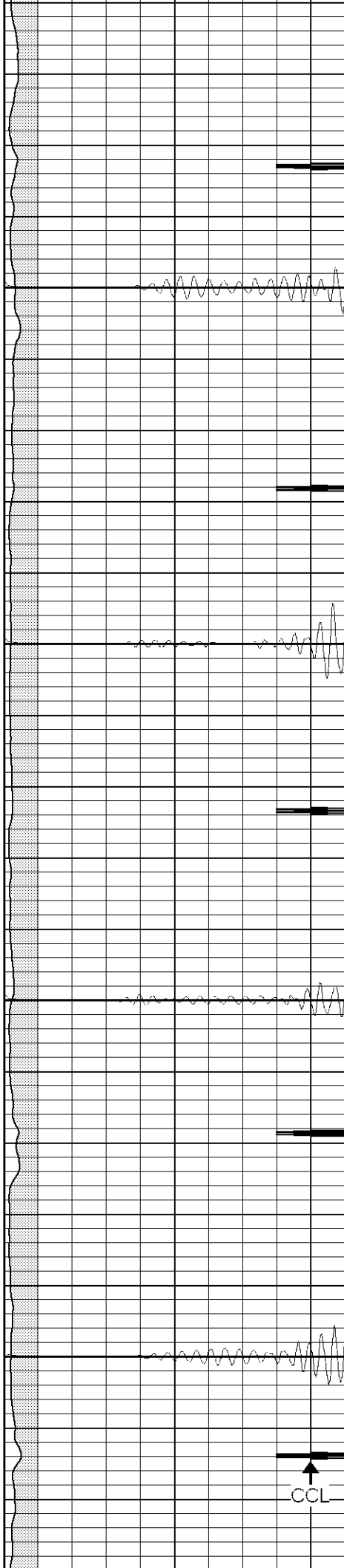


2200

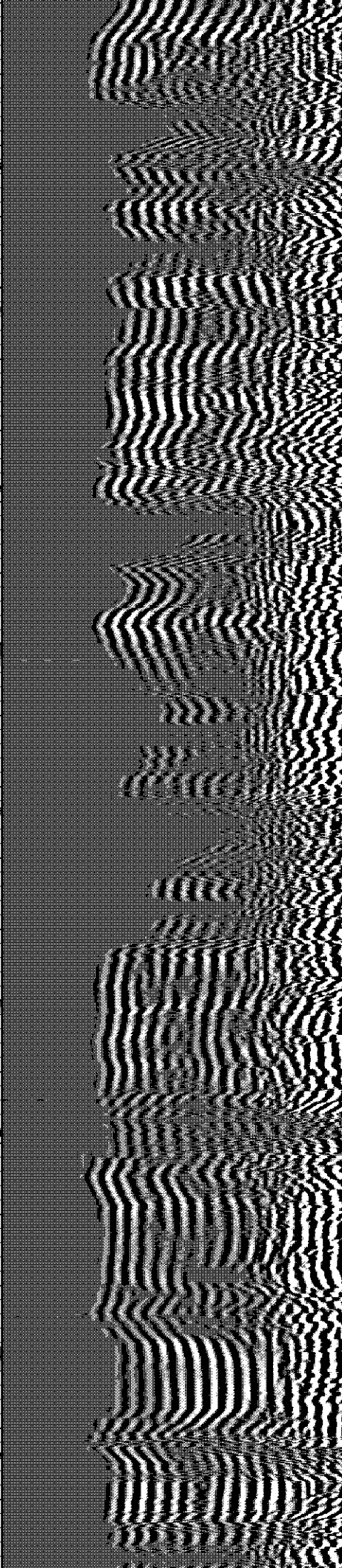
2250

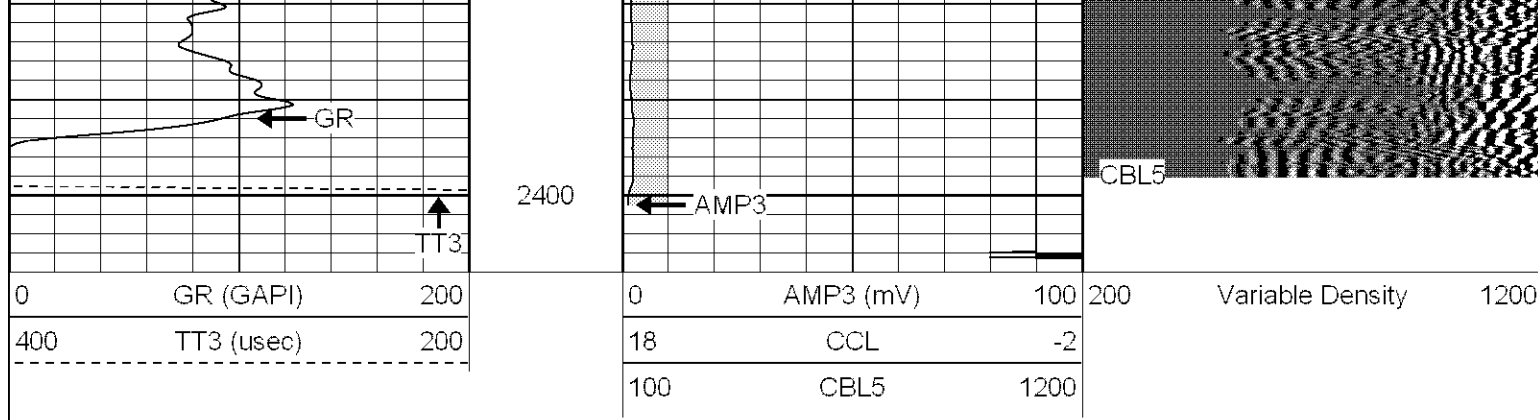
2300

2350



CCL



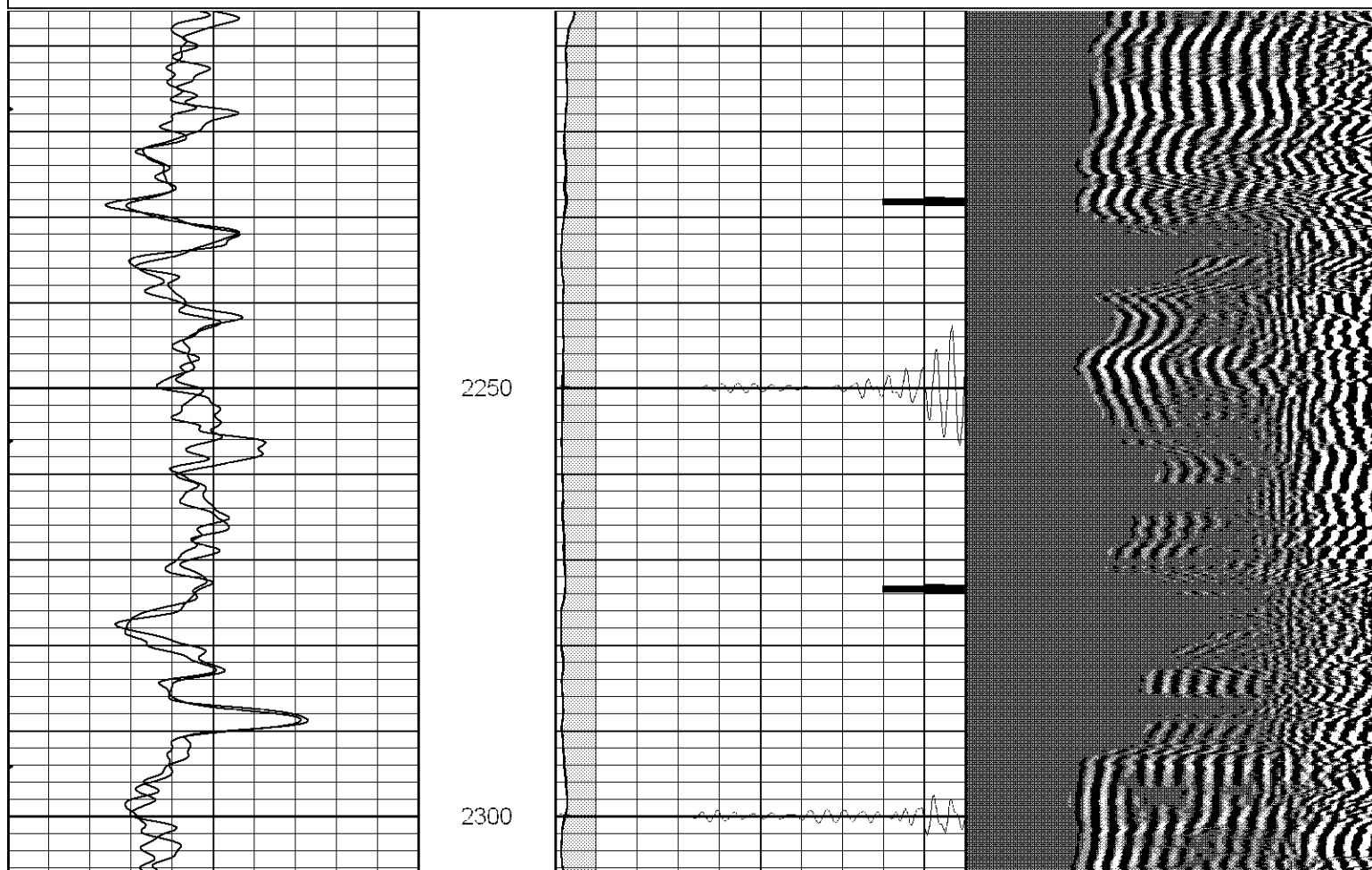


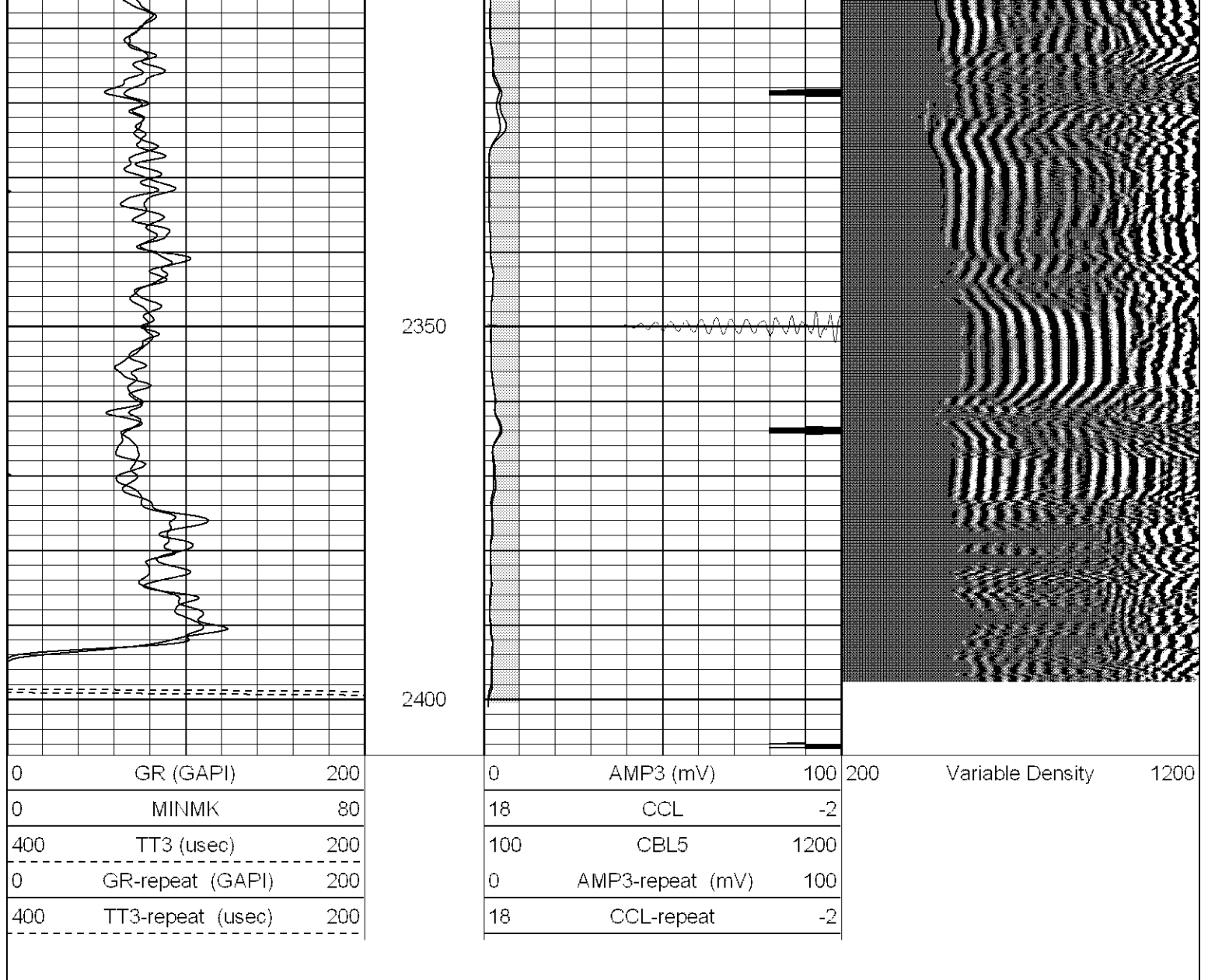
Patterson

Repeat Pass

Database File: xtoge2003032806b.db
 Dataset Pathname: pass1.1
 Presentation Format: cblrt
 Dataset Creation: Tue Mar 28 11:54:35 2006 by Calc Warrior 7.0 STD Ope
 Charted by: Depth in Feet scaled 1:240

0	GR (GAPI)	200	0	AMP3 (mV)	100	200	Variable Density	1200
0	MINMK	80	18	CCL	-2			
400	TT3 (usec)	200	100	CBL5	1200			
0	GR-repeat (GAPI)	200	0	AMP3-repeat (mV)	100			
400	TT3-repeat (usec)	200	18	CCL-repeat	-2			





Cement Bond Log Calibration Report

Serial Number:	Titan5		
Tool Model:	T5		
Performed:	Tue Mar 28 10:28:16 2006		
Depth:	214.013	ft	
Casing Diameter:	5.5	in	
	3' Spacing	5' Spacing	
Signal Zero:	1	0	mV
Calibrated Amplitude:	85	85	mV
Reading at Signal Zero:	-0.00380859	-0.00378418	V
Reading in Free Pipe:	1.61	1.3	V
Gain:	52.0508	65.1948	
Offset:	1.19824	0.246709	

Gamma Ray Calibration Report

Serial Number:	Titan5
Tool Model:	T2
Performed:	Tue Mar 14 23:28:34 2006

Calibrator Value:	1.0	GAPI
Background Reading:	0.0	cps
Calibrator Reading:	1.0	cps
Sensitivity:	1.2100	GAPI/cps

Sensor	Offset (ft)	Schematic	Description	Len (ft)	OD (in)	Wt (lb)
CHD	15.66		None	0.75	1.50	5.00
GR	13.64		GR-T2 (Titan5) Titan5	2.52	2.44	25.00
WVF5	9.49		CBL-T5 (Titan5)	7.23	2.44	110.00
WVF3	8.49					
CENT	5.15		X	3.00	1.69	25.00
CCL	0.83		CCL-T5 (Titan5) Long	2.15	2.75	15.00
Dataset: /field/well/run1/_plots/_jobs/_cbl Total Length: 15.66 ft Total Weight: 180.00 lb O.D. 2.75 in						