

Patterson

**GAMMA RAY
NEUTRON
LOG**

Company El Paso E & P Company, L.P.
Well VPR "C"-125
Field Purgatorie River
County Las Animas State Colorado

Location: API # : 05-071-08769-00
2564' FNL & 2573' FEL
SEC 13 TWP 35S RGE 67W
Permanent Datum Ground Level Elevation 7950'
Log Measured From Ground Level
Drilling Measured From Ground Level
Other Services
CBL
Elevation
K.B. -----
D.F. -----
G.L. 7950'

Company El Paso E & P Company, L.P.
Well VPR "C"-125
Field Purgatorie River
County Las Animas
State Colorado

Date	5-3-06		
Run Number	One		
Depth Driller	2424'		
Depth Logger	2387'		
Bottom Logged Interval	2385'		
Top Log Interval	320'		
Open Hole Size	7 7/8"		
Type Fluid	Water		
Density / Viscosity	////		
Max. Recorded Temp.	128 DEG F		
Estimated Cement Top	1262'		
Time Well Ready	Portable Mast		
Time Logger on Bottom	9:30 A.M.		
Equipment Number	T096		
Location	Trinidad		
Recorded By	S. Allen		
Witnessed By			

Borehole Record				Tubing Record			
Run Number	Bit	From	To	Size	Weight	From	To

Casing Record	Size	Wgt/Ft	Top	Bottom
Surface String	8 5/8"		00	330'
Prot. String				
Production String	5 1/2"		00	N/A
Liner				

>>> Fold Here >>>

All interpretations are opinions based on inferences from electrical or other measurements and we cannot and do not guarantee the accuracy or correctness of any interpretation, and we shall not, except in the case of gross or willful negligence on our part, be liable or responsible for any loss, costs, damages, or expenses incurred or sustained by anyone resulting from any interpretation made by any of our officers, agents or employees. These interpretations are also subject to our general terms and conditions set out in our current Price Schedule.

Comments

Well Directions:
Lorencito Gate-Stay on Main Road-Cross into New Mexico-
Drive Past A-182 WDW to "T"-Turn Right-
Stay on Road-Dead End on Location.

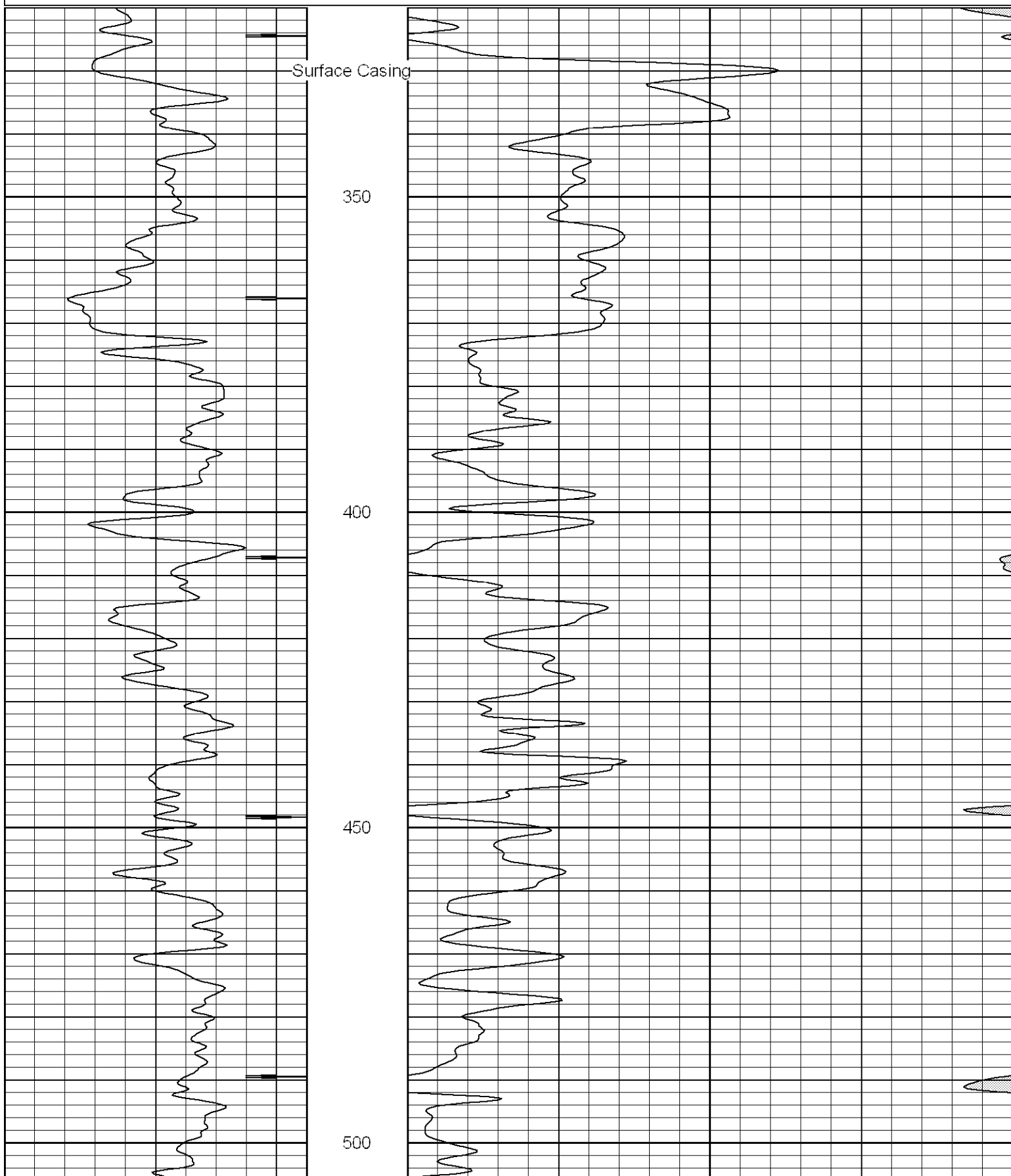
Patterson

Main Pass

Database File: elpasovprc125-050306bn.db
Dataset Pathname: pass3.1
Presentation Format: gr-n-ccl
Dataset Creation: Wed May 03 13:39:56 2006 by Calc Warrior 7.0 STD Ope
Charted by: Depth in Feet scaled 1:240

0	GR (GAPI)	200
18	CCL	-2

30	NPOR (pu)	-10
----	-----------	-----



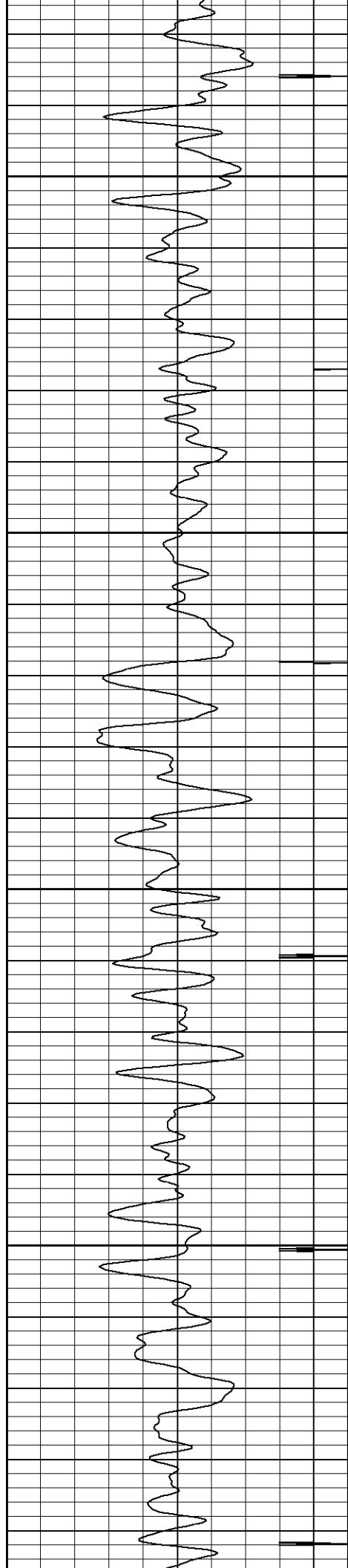
Fluid Level on Backside of 5 1/2" Casing

550

600

650

700

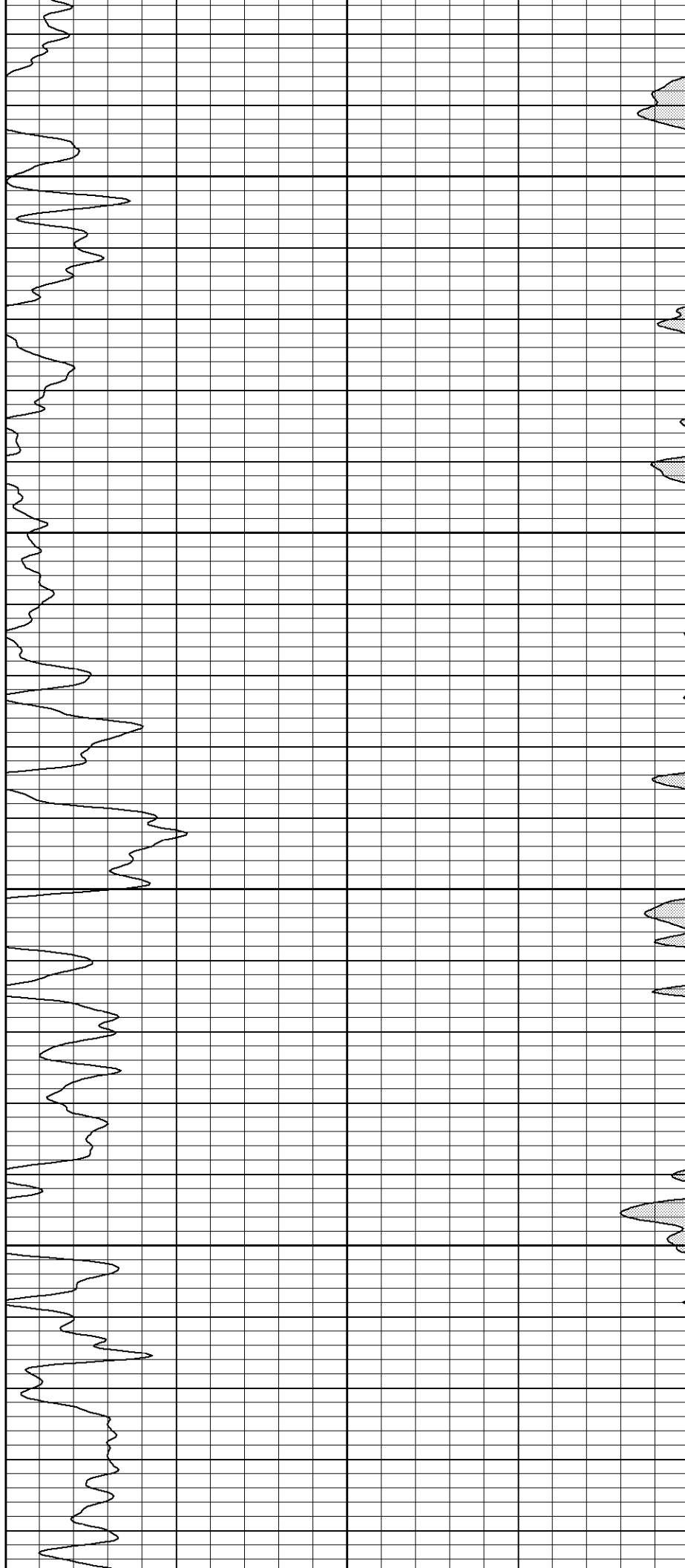


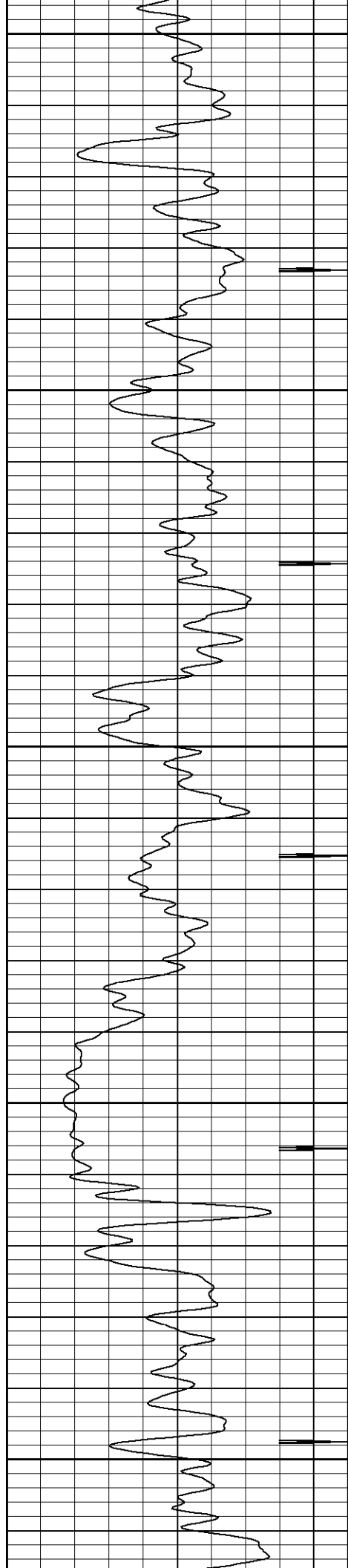
750

800

850

900





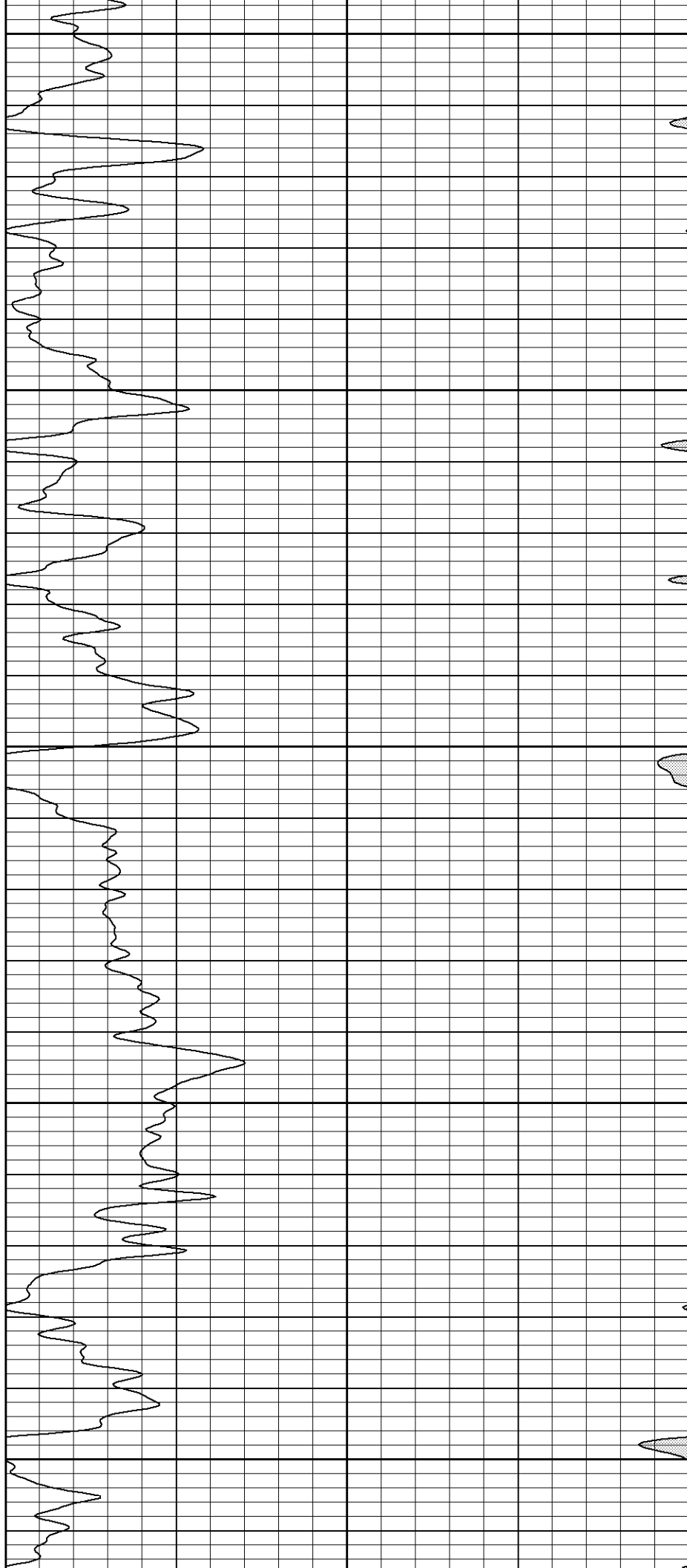
950

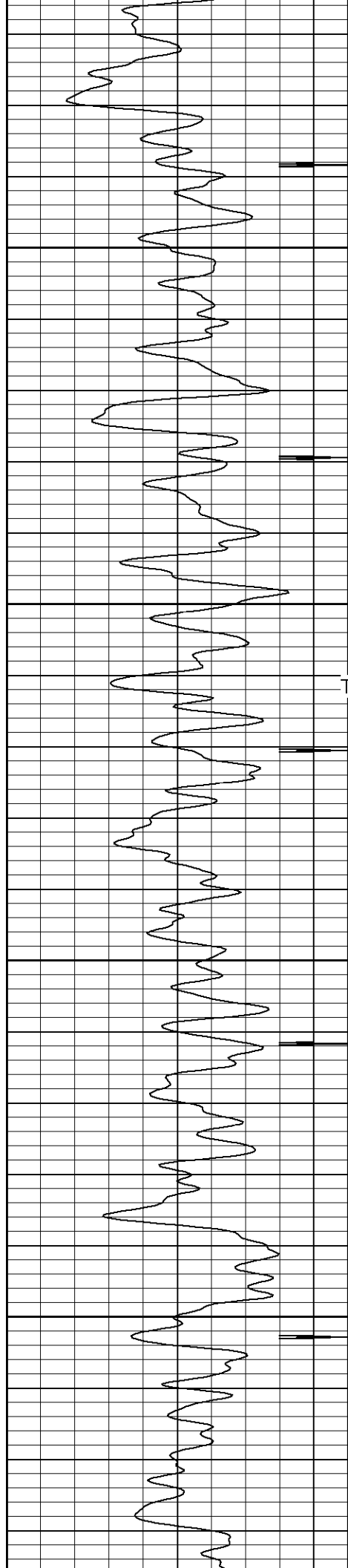
1000

1050

1100

1150





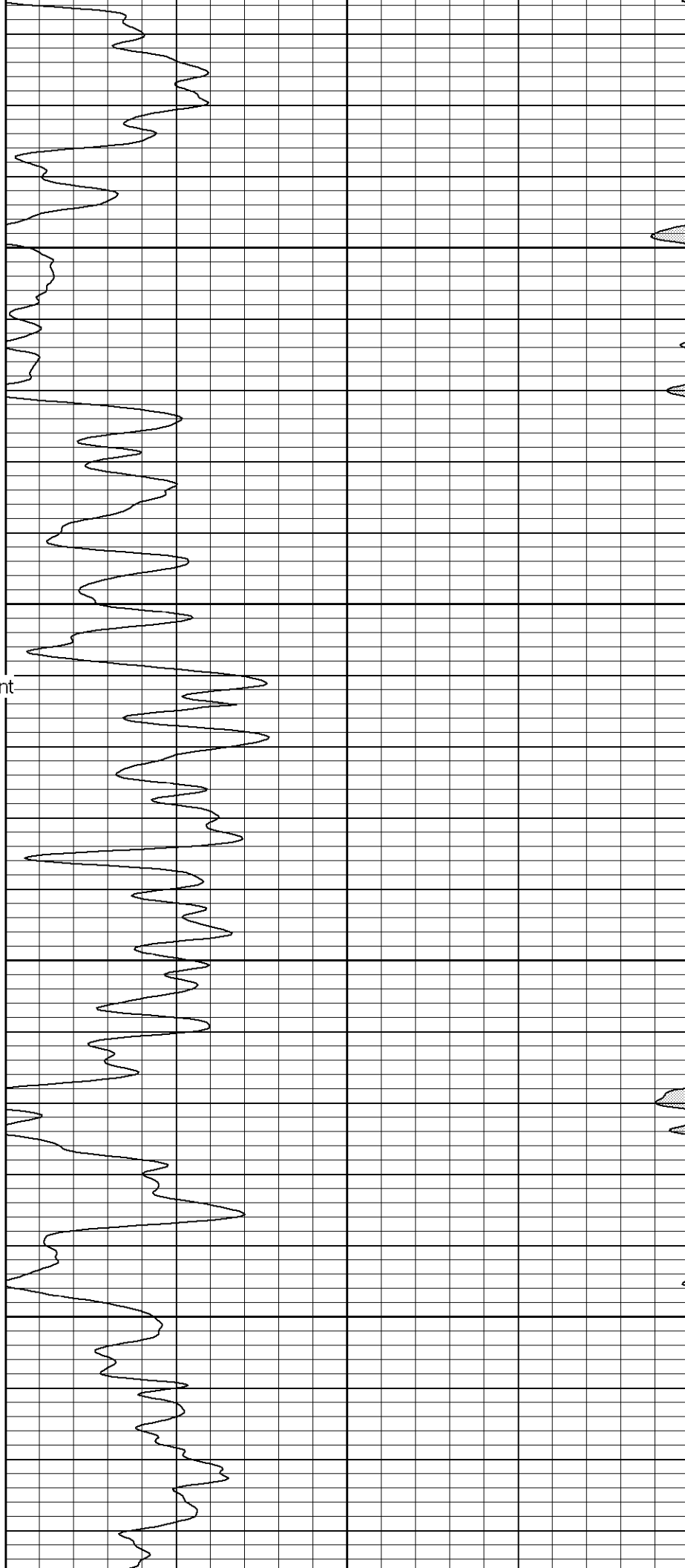
1200

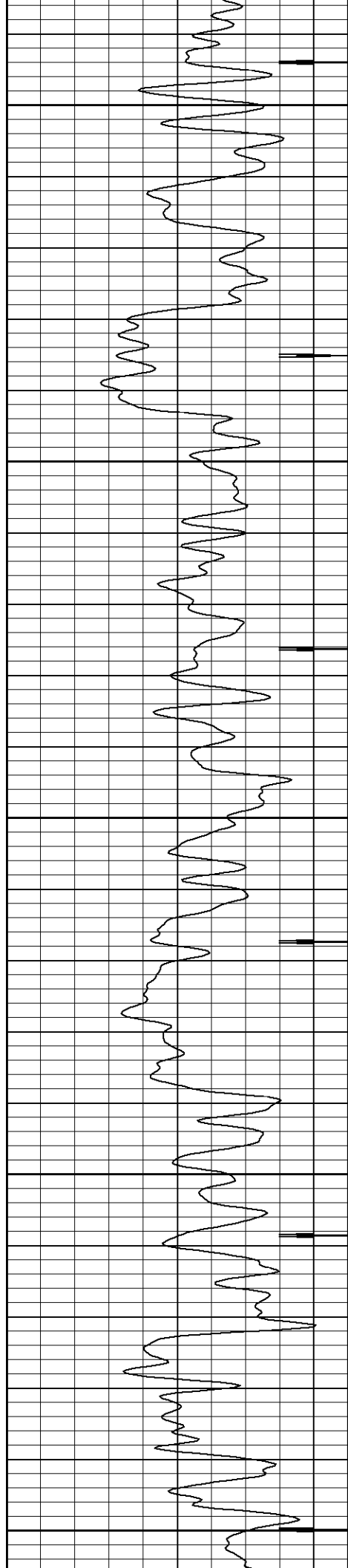
1250

Top of Cement

1300

1350





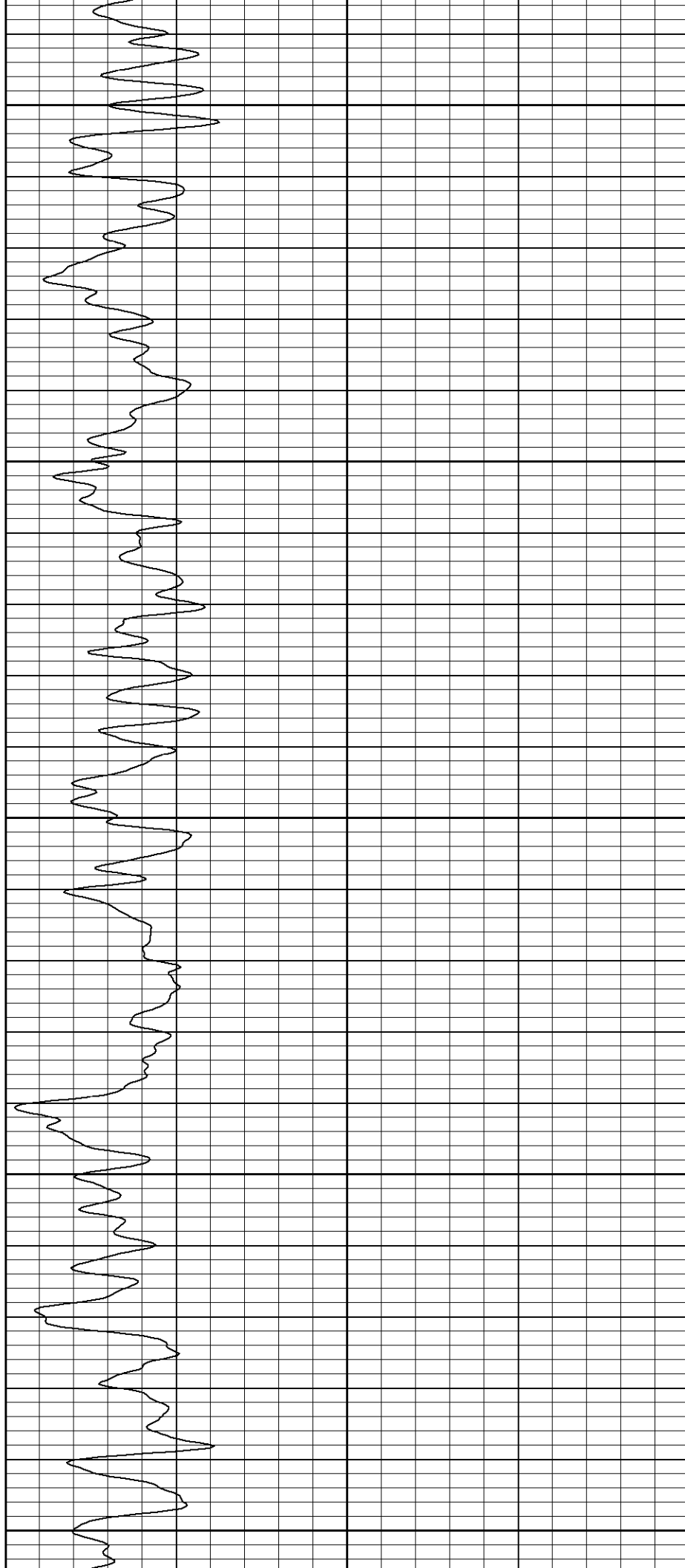
1400

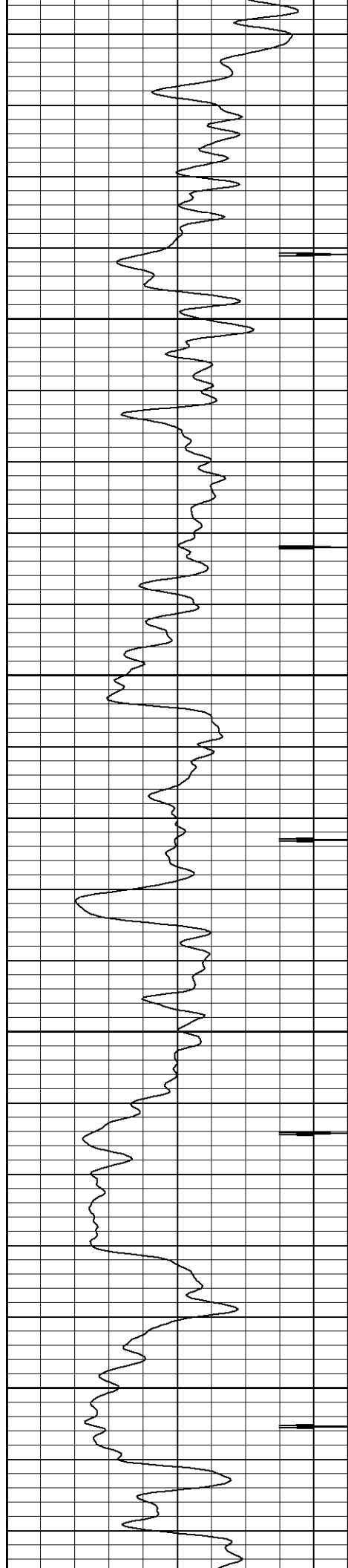
1450

1500

1550

1600



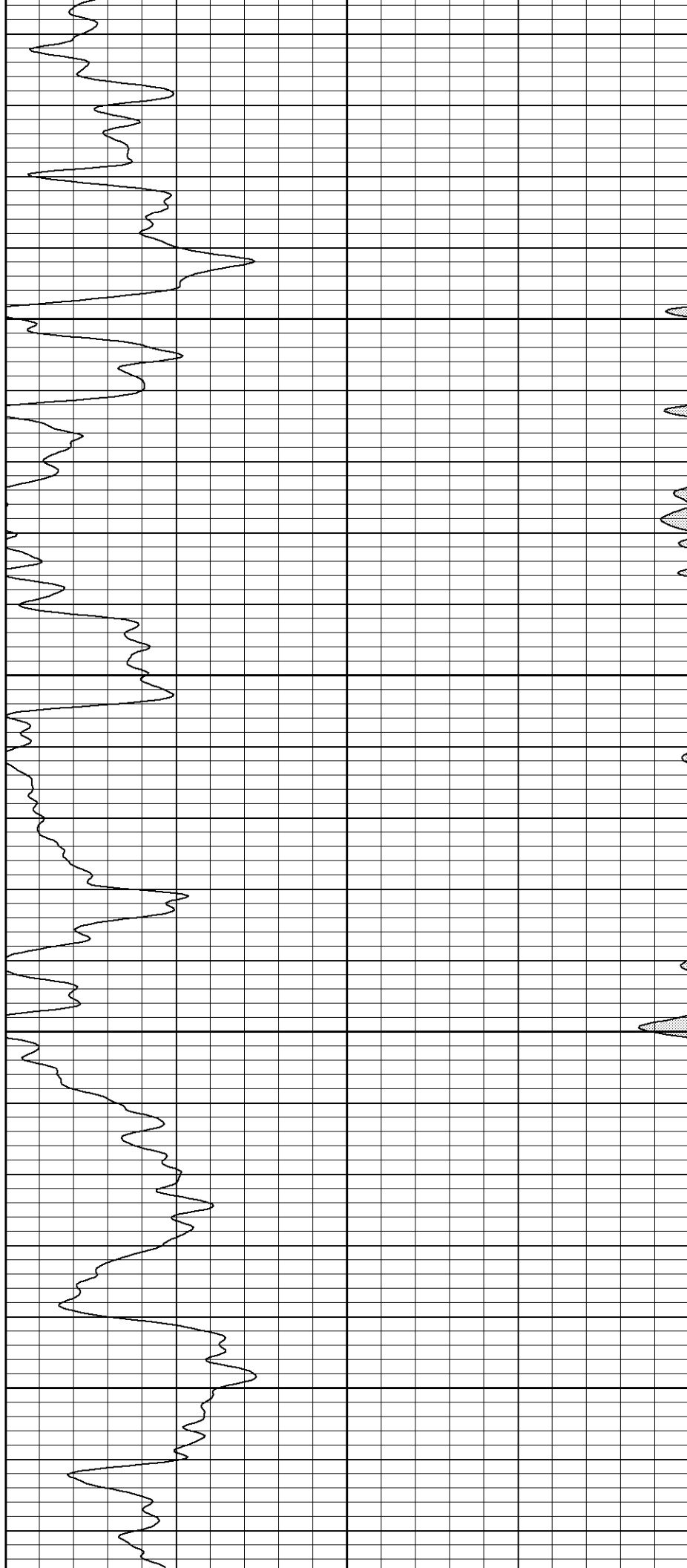


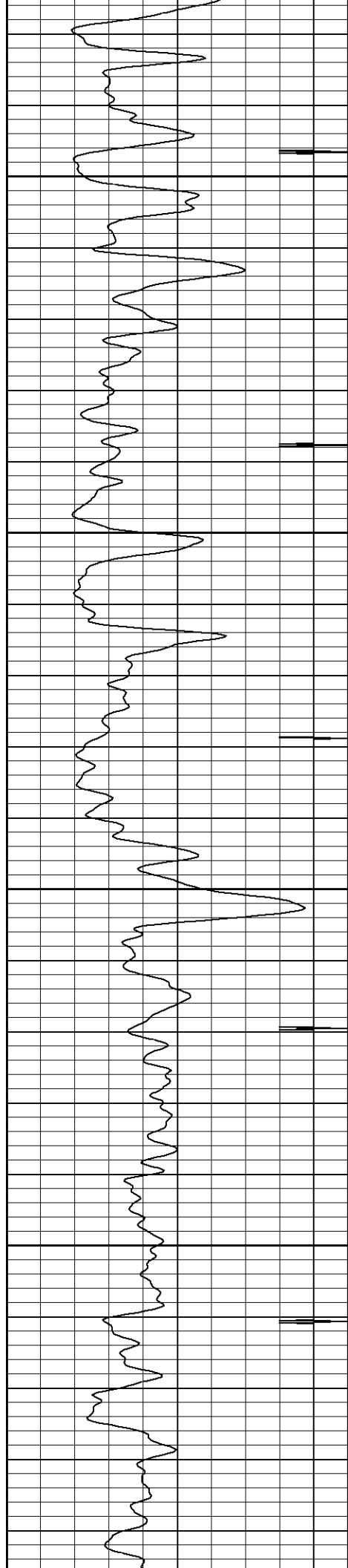
1650

1700

1750

1800



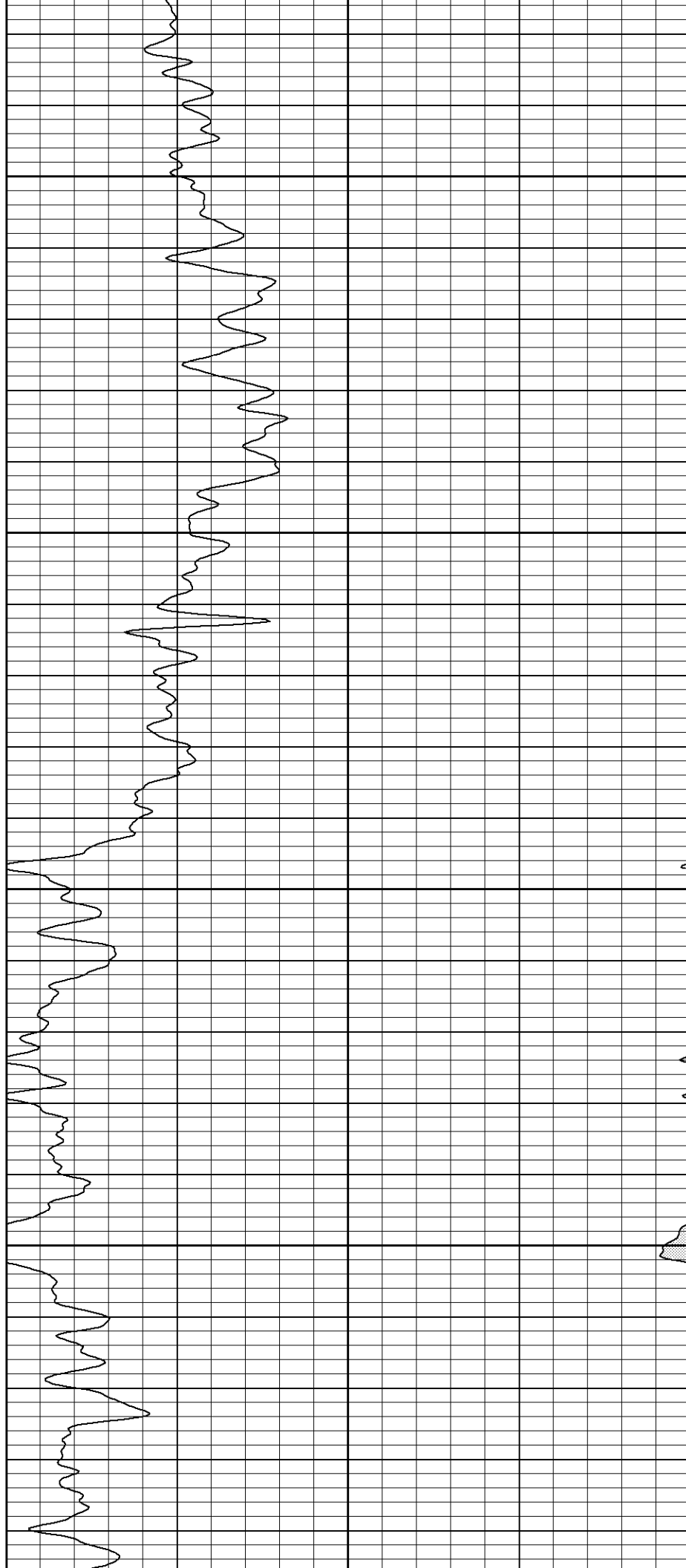


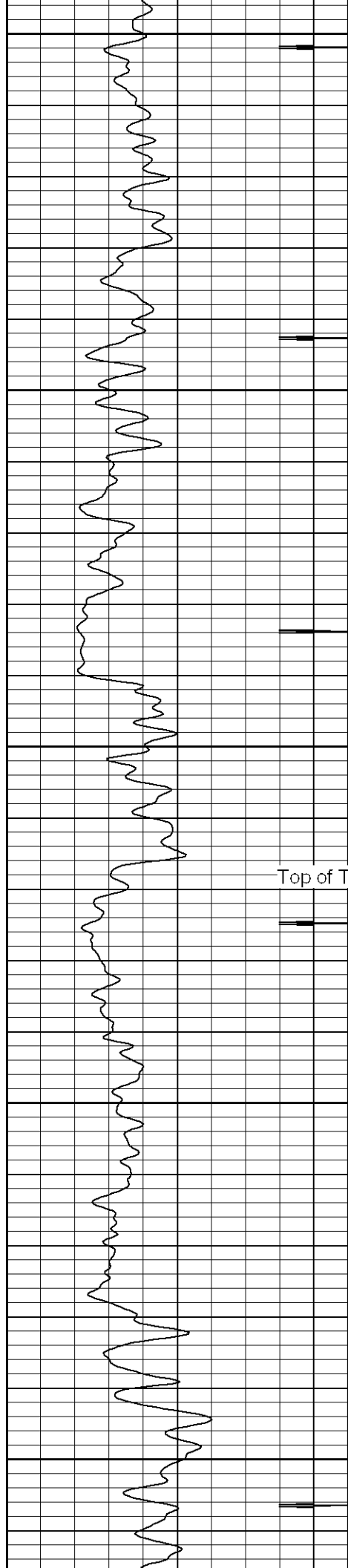
1850

1900

1950

2000





2050

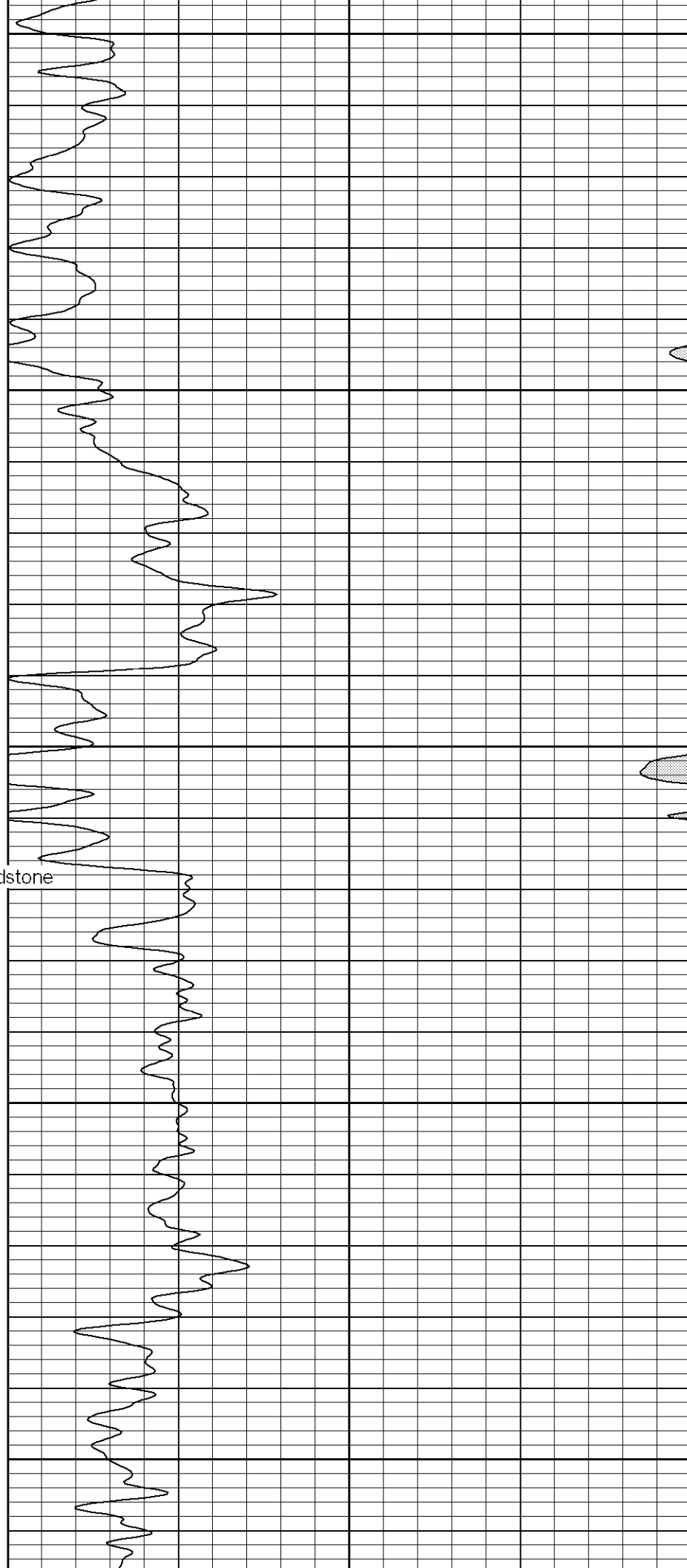
2100

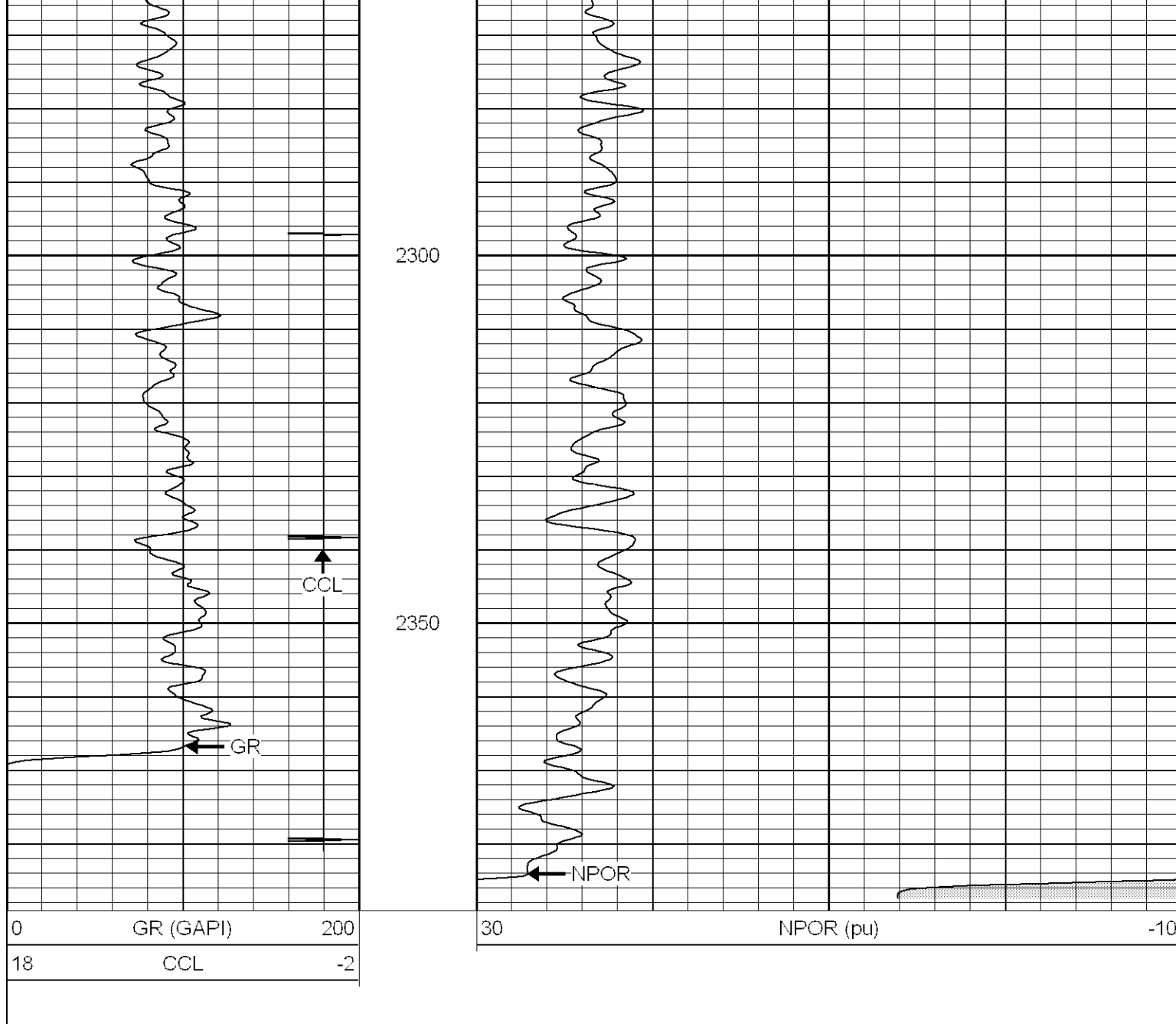
2150

Top of Trinidad Sandstone

2200

2250

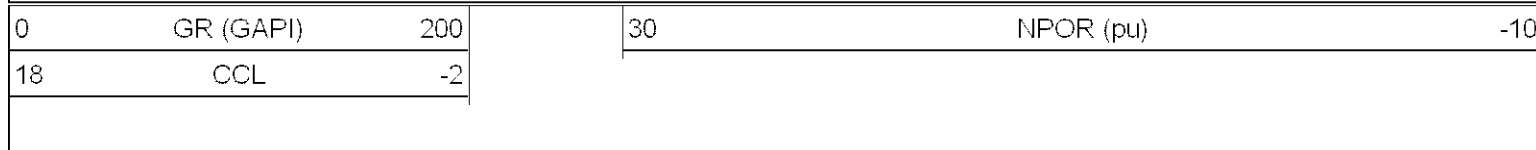


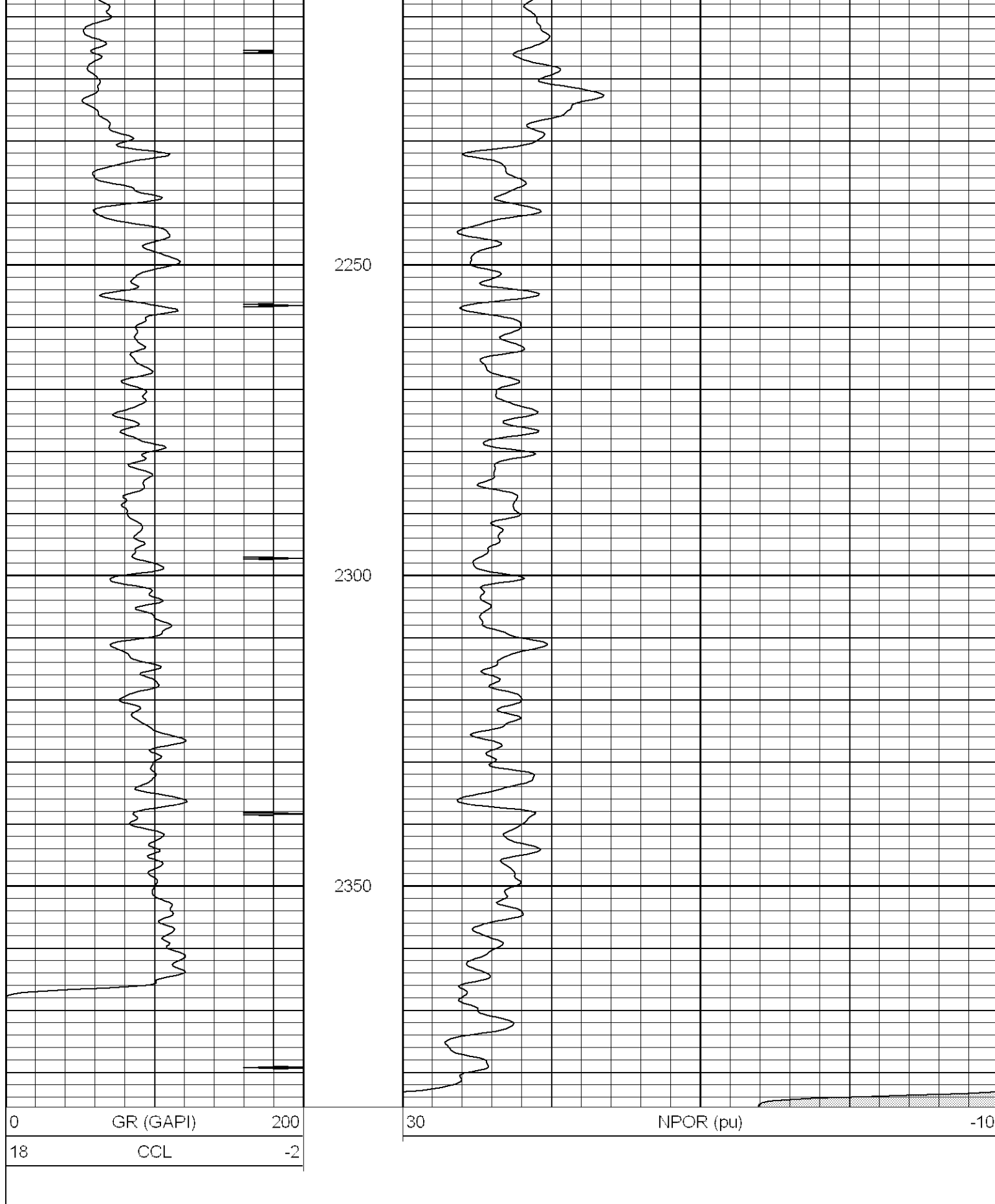


Patterson

Repeat Section

Database File: elpasovprc125-050306bn.db
 Dataset Pathname: pass2.1
 Presentation Format: gr-n-ccl
 Dataset Creation: Wed May 03 13:38:00 2006 by Calc Warrior 7.0 STD Ope
 Charted by: Depth in Feet scaled 1:240





Neutron Calibration Report

Serial Number:
Tool Model:
Performed:

Titan
T
Thu May 08 10:16:24 2003

Calibrator Value:	1200	NAPI
Calibrator Reading:	1700	cps
Sensitivity:	1	NAPI/cps

Cement Bond Log Calibration Report

Serial Number:	Titan3		
Tool Model:	T3		
Performed:	Wed May 03 09:13:33 2006		
Depth:	41.715	ft	
Casing Diameter:	5.5	in	
	3' Spacing	5' Spacing	
Signal Zero:	1	1	mV
Calibrated Amplitude:	85	85	mV
Reading at Signal Zero:	0	0.00661621	V
Reading in Free Pipe:	1.1	1.50681	V
Gain:	76.3636	55.9927	
Offset:	1	0.62954	

Gamma Ray Calibration Report

Serial Number:	Titan3	
Tool Model:	T2	
Performed:	Thu Apr 13 15:03:04 2006	
Calibrator Value:	200.0	GAPI
Background Reading:	54.0	cps
Calibrator Reading:	219.0	cps
Sensitivity:	1.1000	GAPI/cps

Sensor	Offset (ft)	Schematic	Description	Len (ft)	OD (in)	Wt (lb)
GR	18.65		GR-T2 (Titan3)	2.52	2.44	25.00
WVF5	14.50		CBL-T3 (Titan3)	7.23	2.44	110.00
WVF3	13.50					
CENT	10.16		X	3.00	1.69	25.00
CCL	5.84		CCL-T5 (Titan3) Long	2.15	2.75	15.00
NEU	1.41		NEU-T (Titan)	5.01	1.69	21.00

Dataset: /field/well/run/_plots/_jobs/_grn
Total Length: 19.92 ft
Total Weight: 196.00 lb
O.D. 2.75 in