



SUPERIOR
Black Lick, Pa.
Mercer, Pa.
Wooster, Oh.
Cleveland, Ok.
Trinidad, Co.

CEMENT BOND GAMMA RAY

Company Pioneer Natural Resources
Well Tanana 33-4
Field Purgatorie River
County Las Animas
State CO

Company Pioneer Natural Resources
Well Tanana 33-4
Field Purgatorie River
County Las Animas State CO

Location: API #: 05 071 09294 00

2689' FSL & 1962' FEL

SEC 4 TWP 32S RGE 66W

Permanent Datum Ground Level Elevation 7576'
Log Measured From Kelly Bushing 9' Above G.L.
Drilling Measured From Kelly Bushing

Other Services
DEVI SUR/
TEMP

Elevation

K.B. 7585'
D.F. -----
G.L. 7576'

Date 10/5/07

Run Number	one
Depth Driller	2550'
Depth Logger	2470'
Bottom Logged Interval	2466'
Top Log Interval	Surf.
Open Hole Size	7 7/8"
Type Fluid	water
Density / Viscosity	///
Max. Recorded Temp.	122F
Estimated Cement Top	2441'
Time Well Ready	ROA
Time Logger on Bottom	3:45
Equipment Number	0703
Location	Trinidad
Recorded By	Worley
Witnessed By	

Borehole Record		Tubing Record					
Run Number	Bit	From	To	Size	Weight	From	To

Casing Record	Size	Wgt/Ft	Top	Bottom
Surface String	8 5/8"		00	642'
Prot. String				
Production String	4 1/2"		00	NA
Liner				

<<< Fold Here >>>

All interpretations are opinions based on inferences from electrical or other measurements and we cannot and do not guarantee the accuracy or correctness of any interpretation, and we shall not, except in the case of gross or willful negligence on our part, be liable or responsible for any loss, costs, damages, or expenses incurred or sustained by anyone resulting from any interpretation made by any of our officers, agents or employees. These interpretations are also subject to our general terms and conditions set out in our current Price Schedule.

Comments

I-25 to exit 30 to Gulnare, take left at Jarosa gravel pit, stay right at creek, go to top of new Healy hill road, 3rd left to drive thru location.

1Degree of Deviation @ T.D.



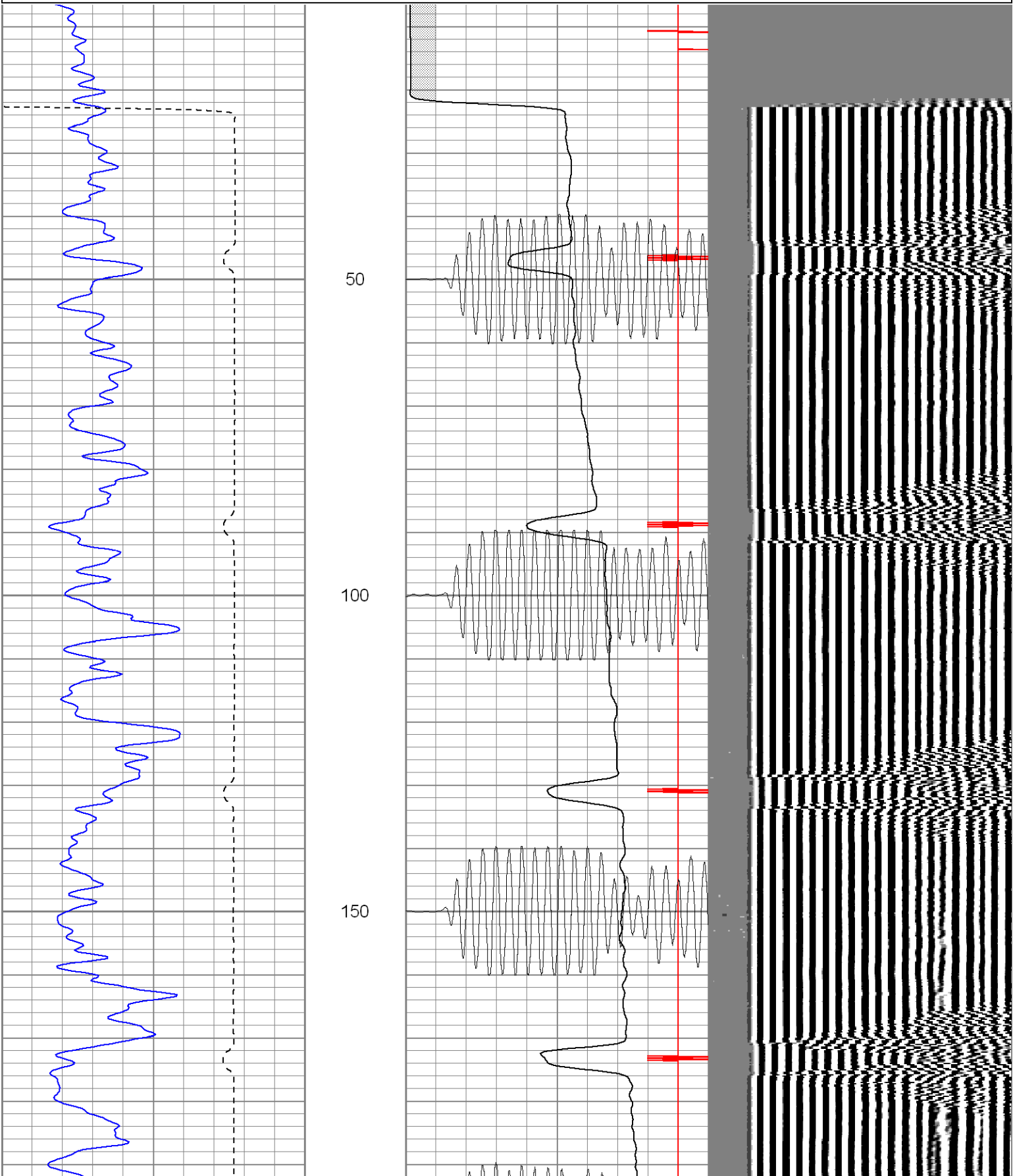
SUPERIOR

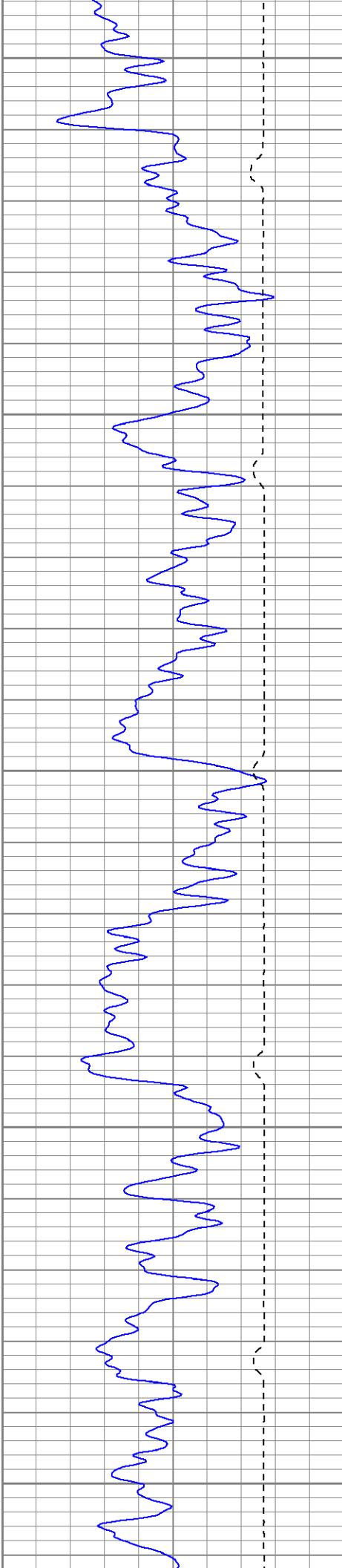
Black Lick, Pa.
Mercer, Pa.
Wooster, Oh.
Cleveland, Ok.
Trinidad, Co.

Main Pass

Database File: tanana10507b.db
Dataset Pathname: pass2
Presentation Format: cblrt
Dataset Creation: Fri Oct 05 15:49:35 2007 by Log Std Casedhole 07051
Charted by: Depth in Feet scaled 1:240

0	GR (GAPI)	200	0	AMP3 (mV)	100	200	CBL5	1200
400	TT3 (usec)	200	18	CCL	-2			
			200	CBL5	1200			





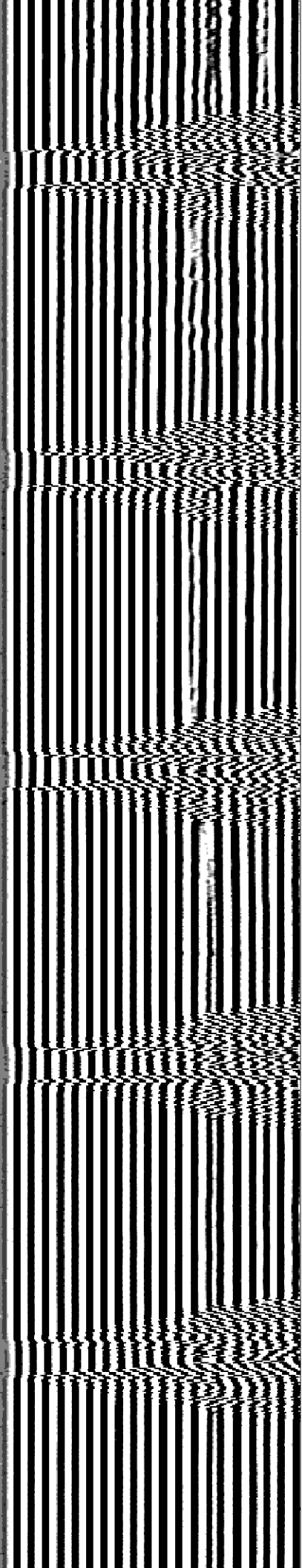
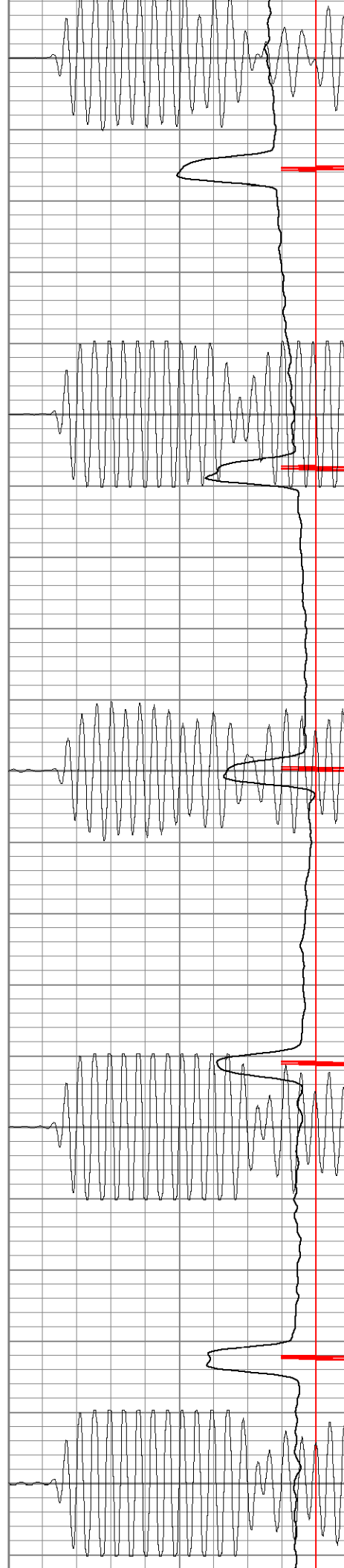
200

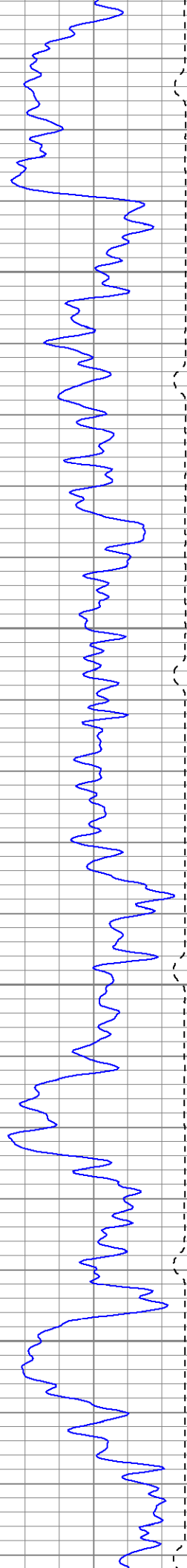
250

300

350

400



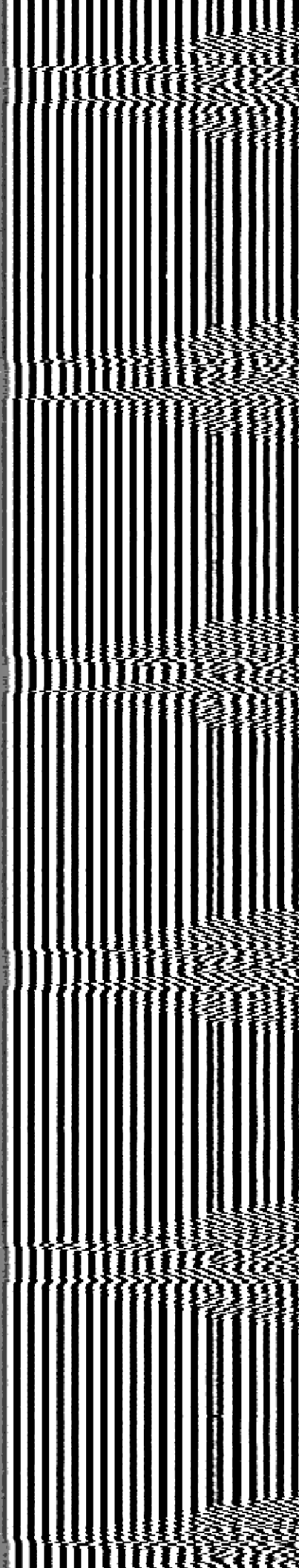
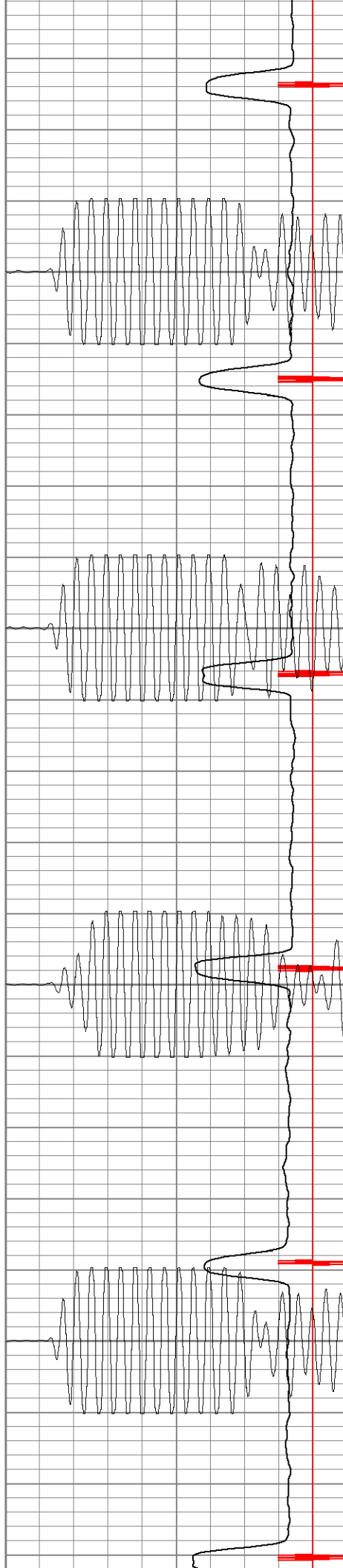


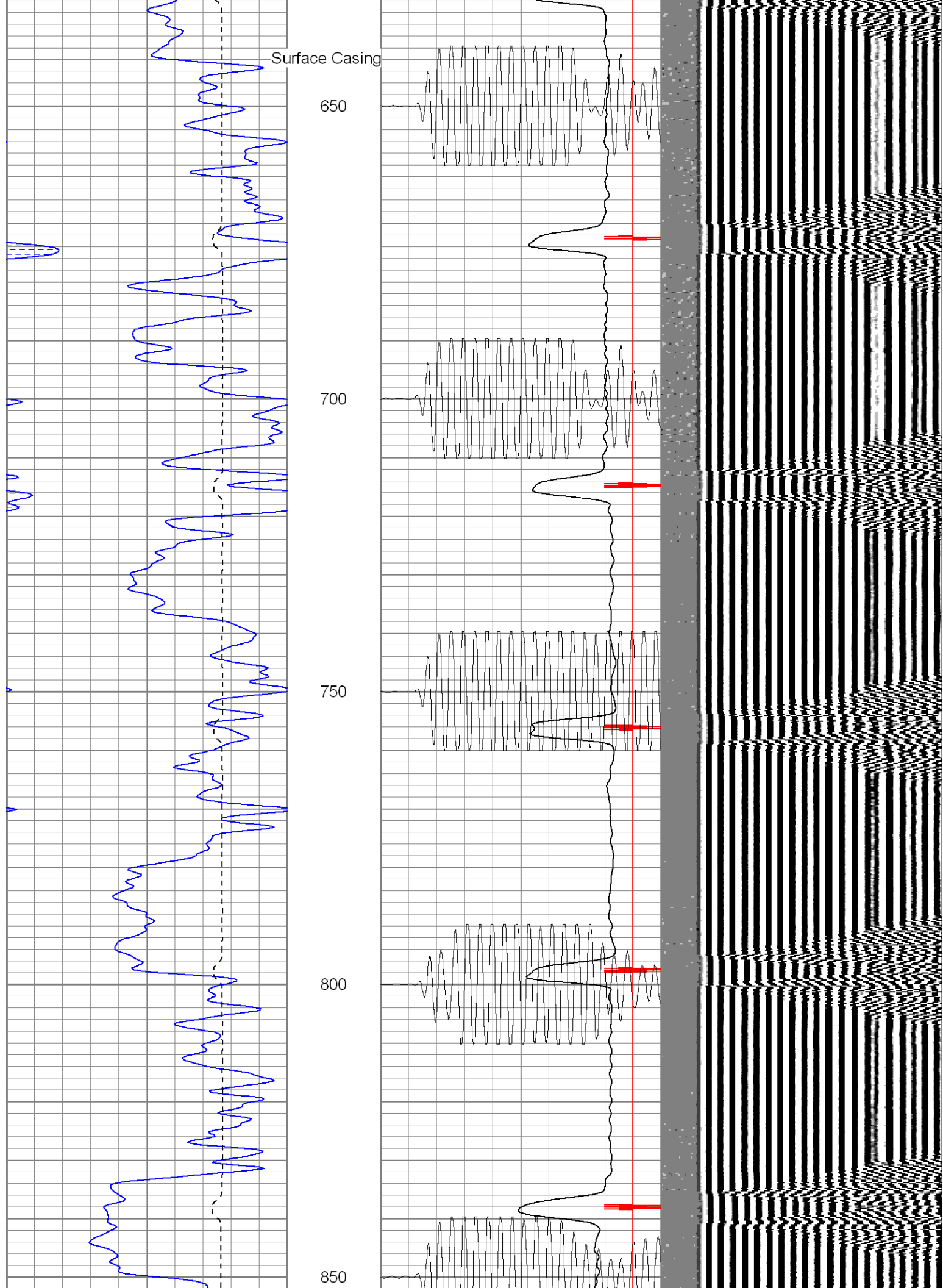
450

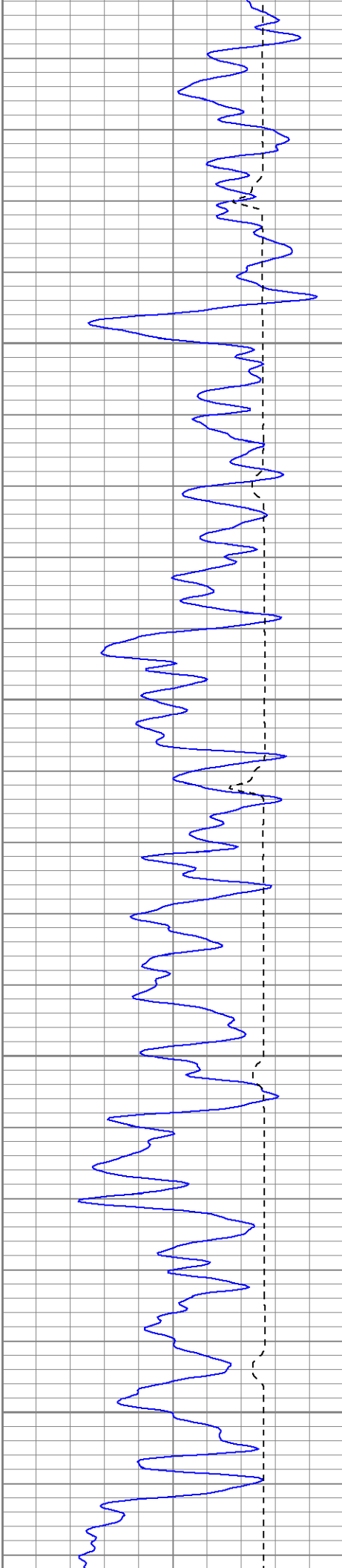
500

550

600





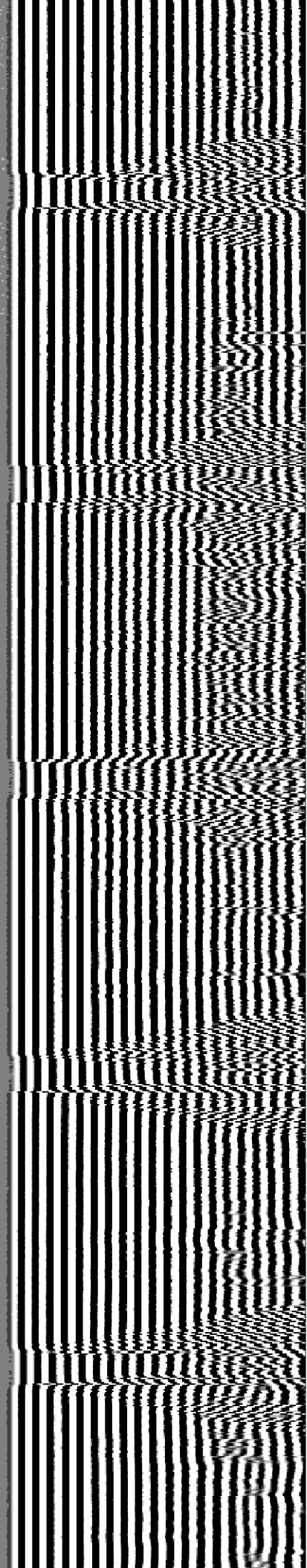
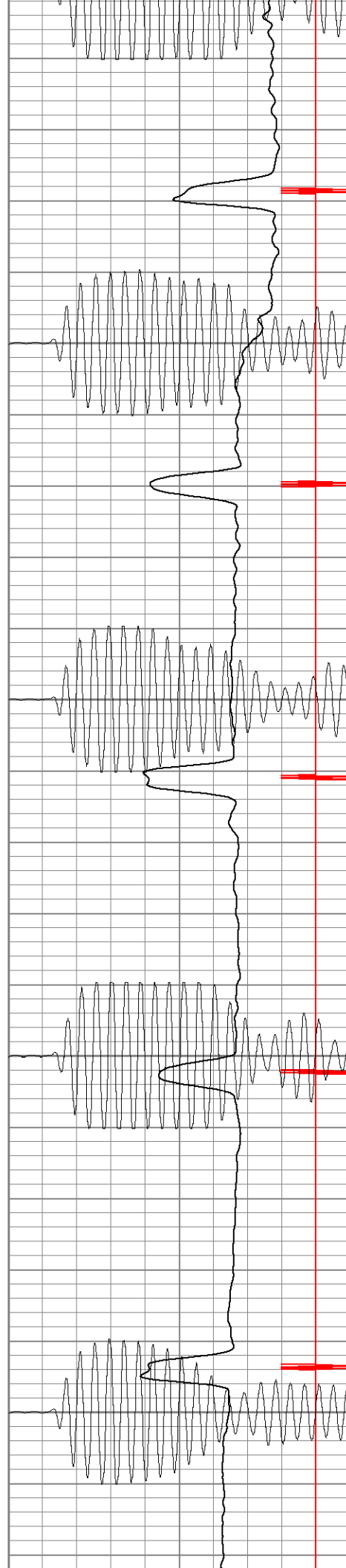


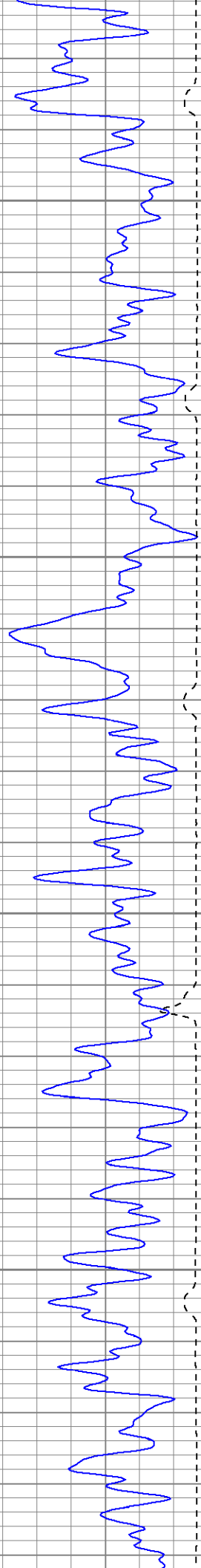
900

950

1000

1050



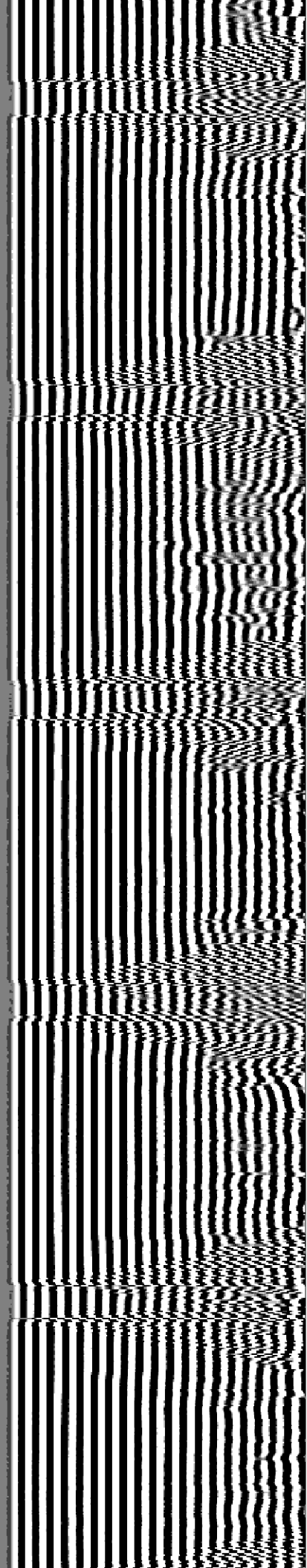
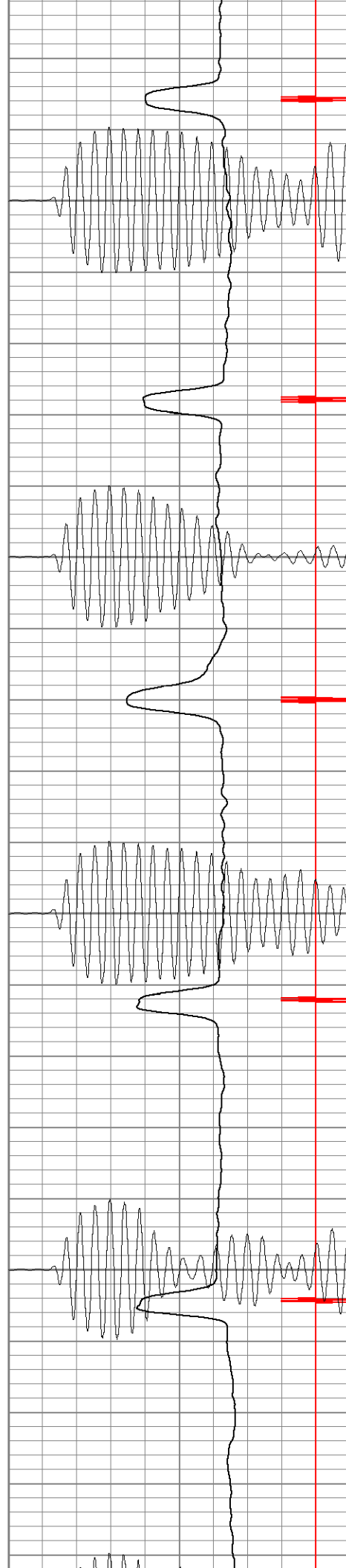


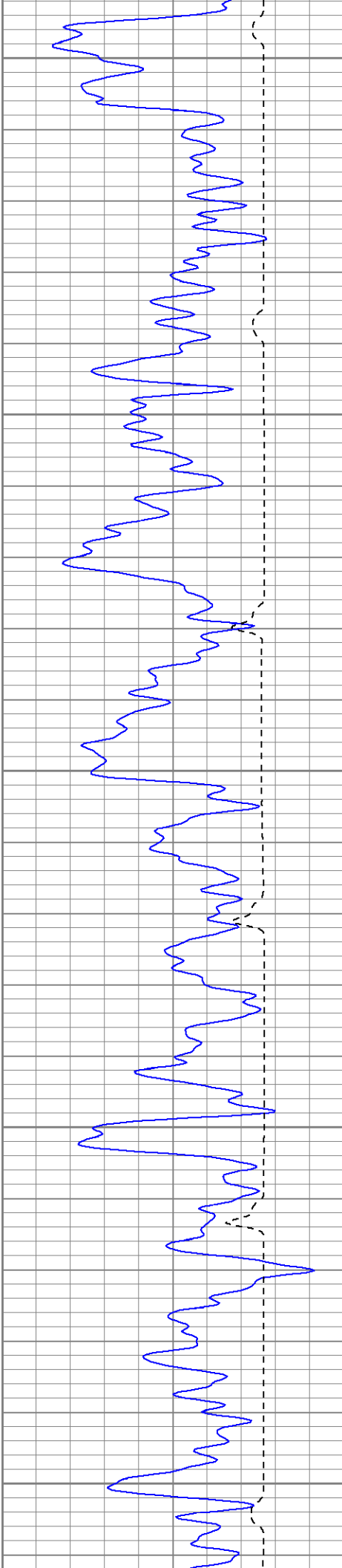
1100

1150

1200

1250





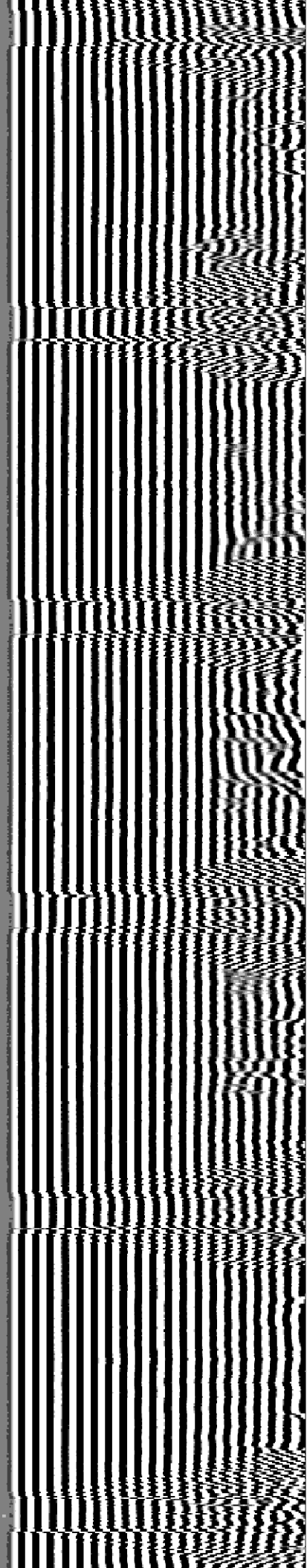
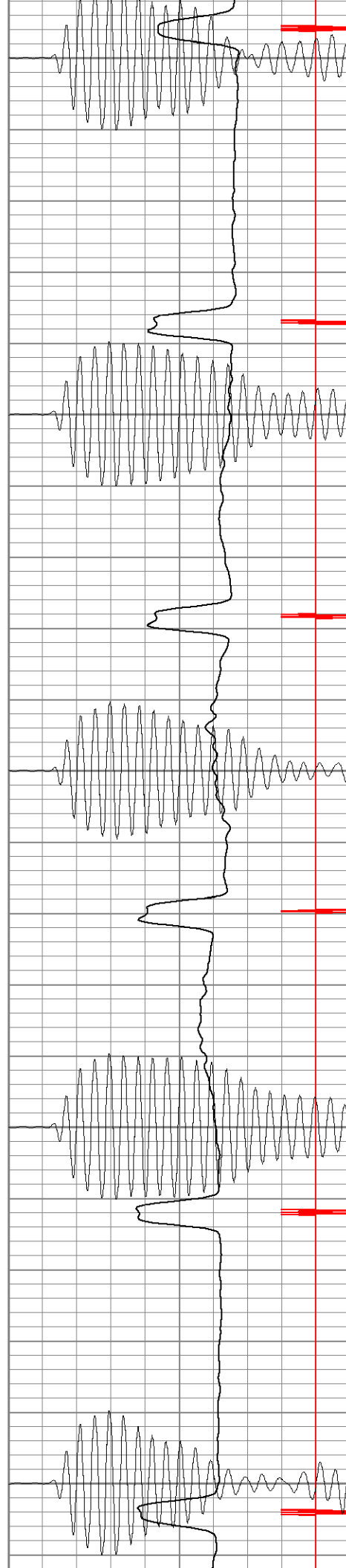
1300

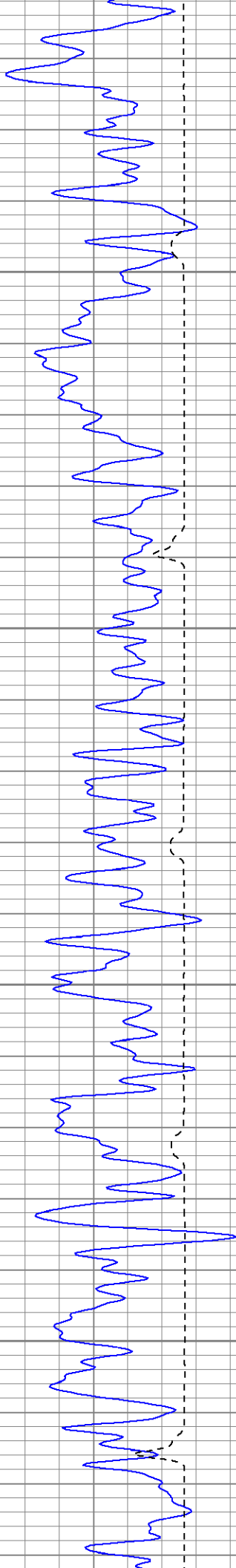
1350

1400

1450

1500



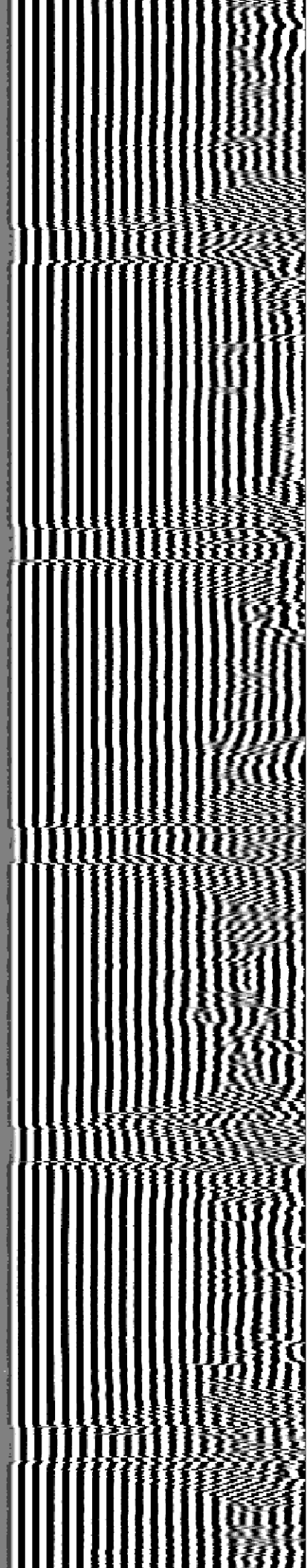
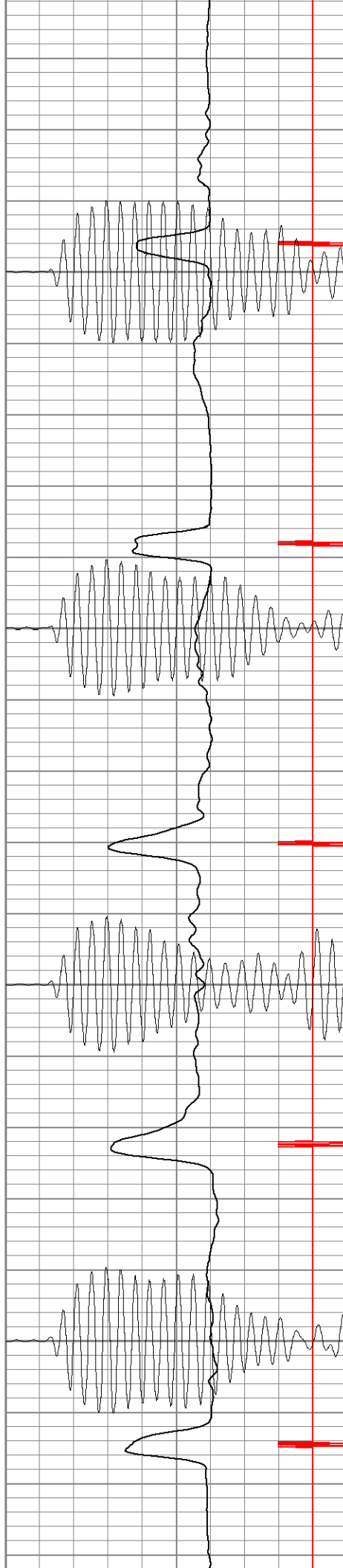


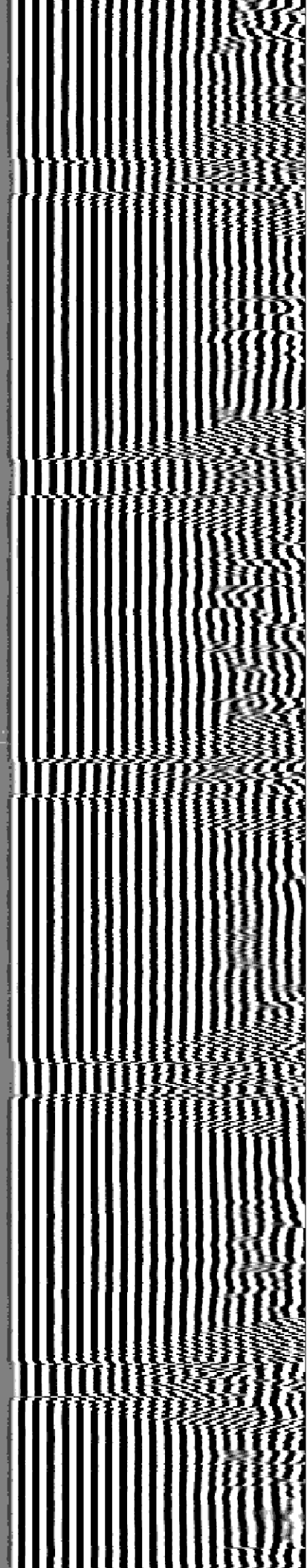
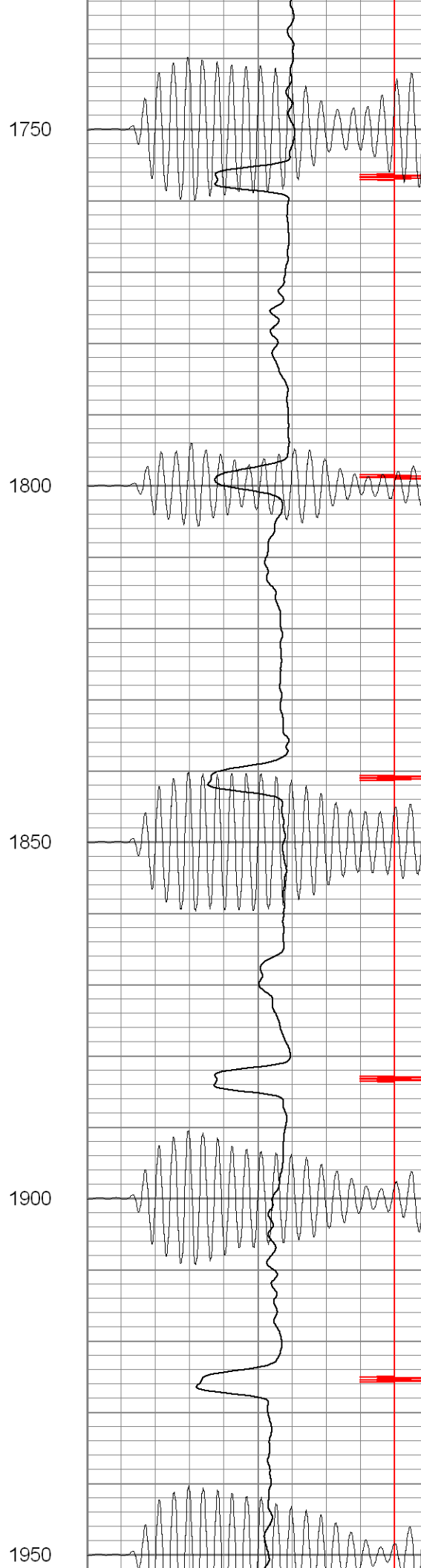
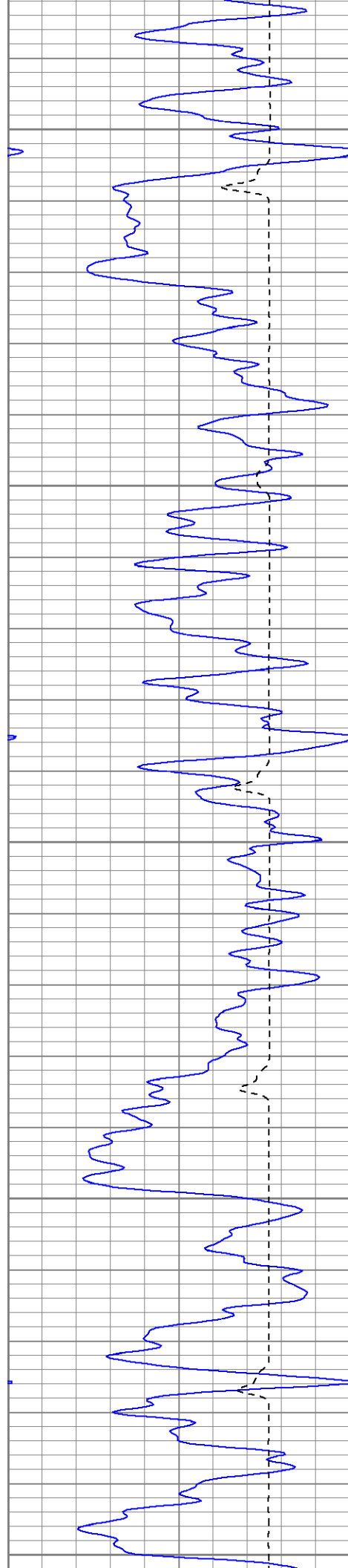
1550

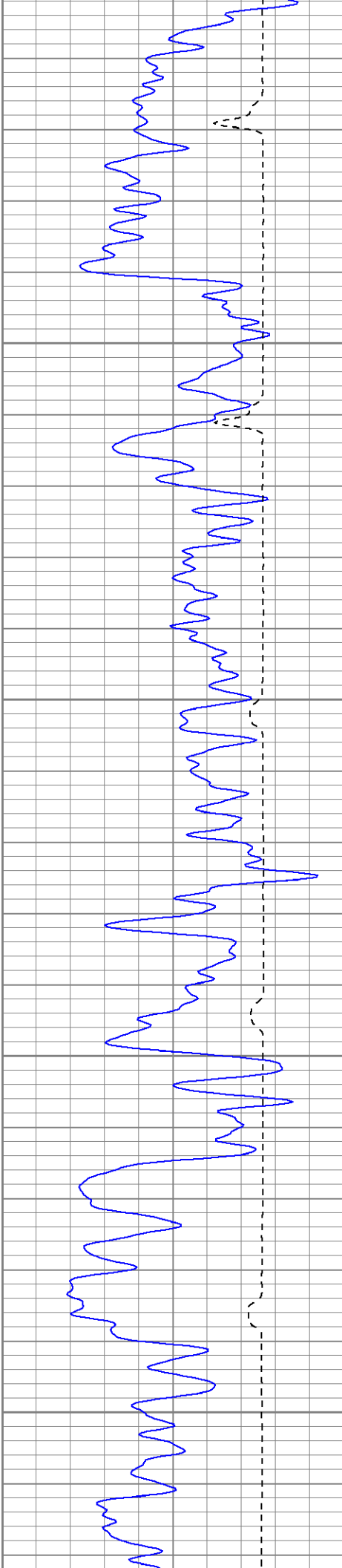
1600

1650

1700





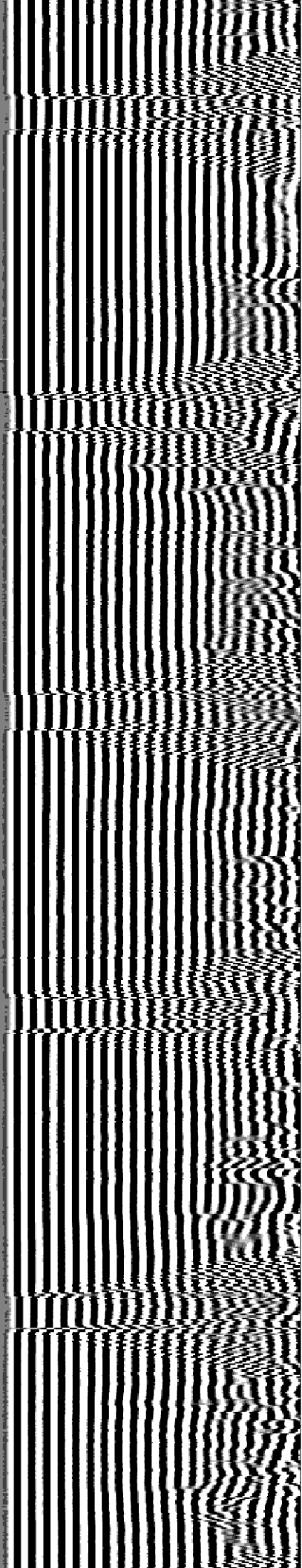
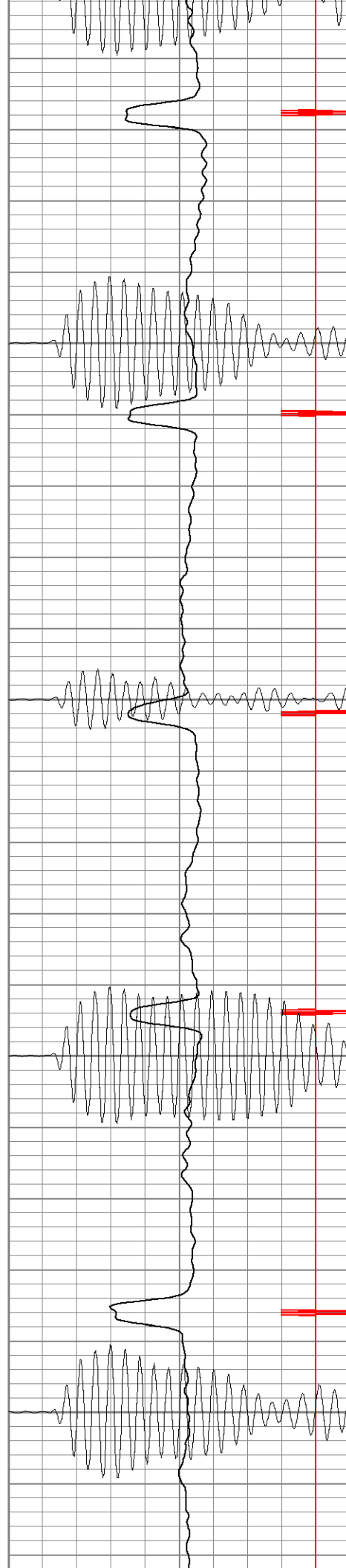


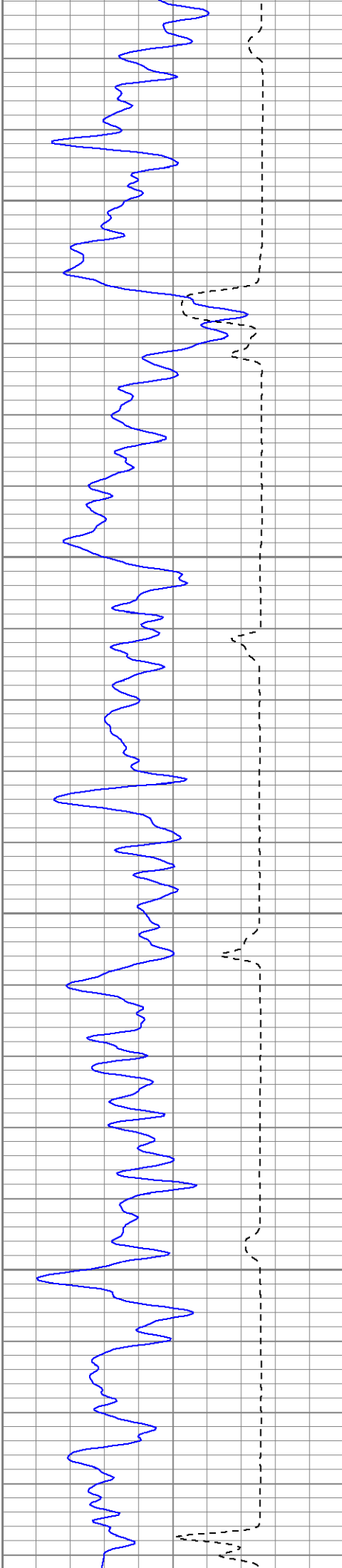
2000

2050

2100

2150



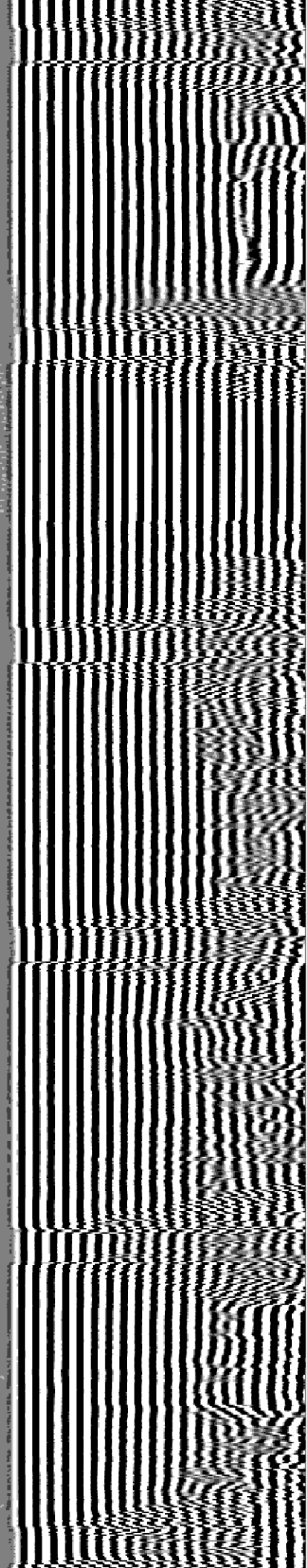
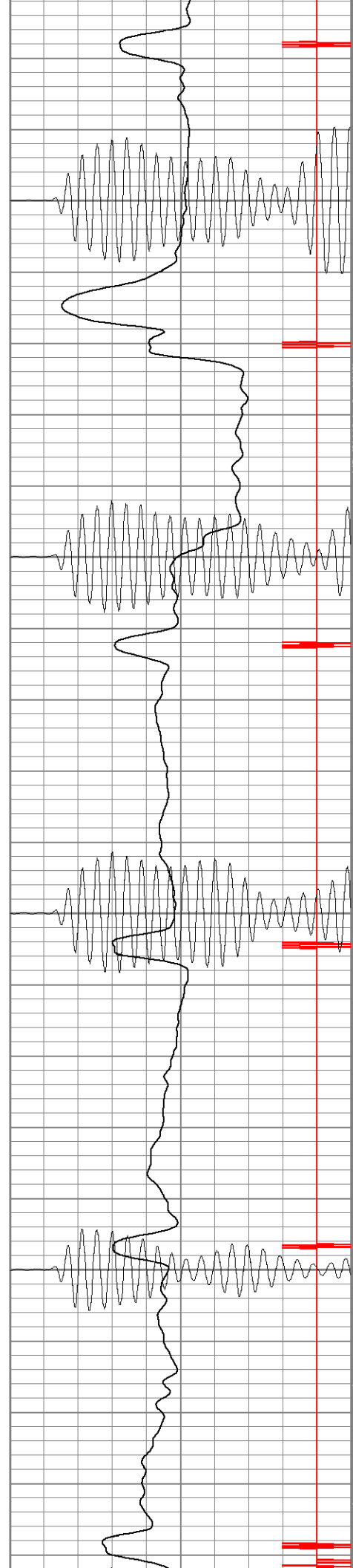


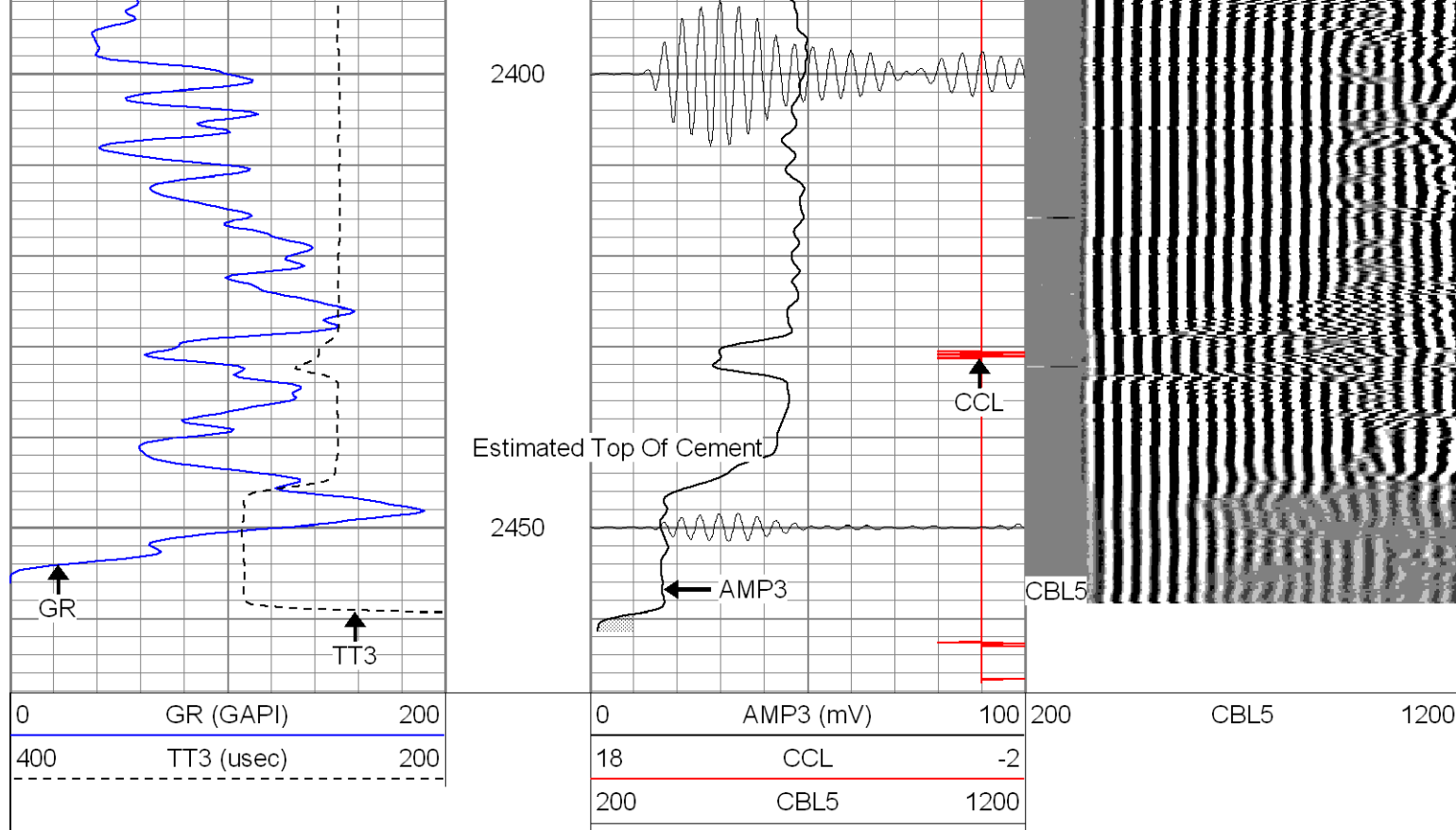
2200

2250

2300

2350



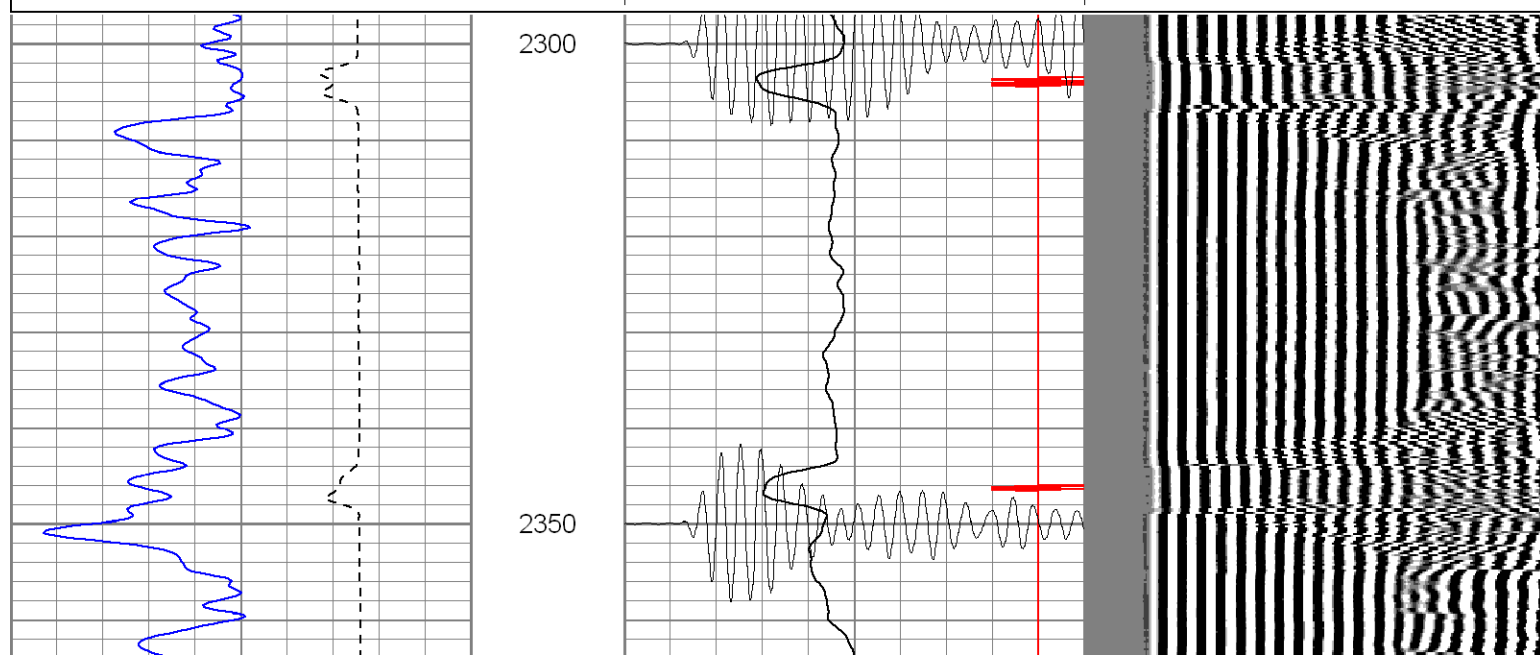
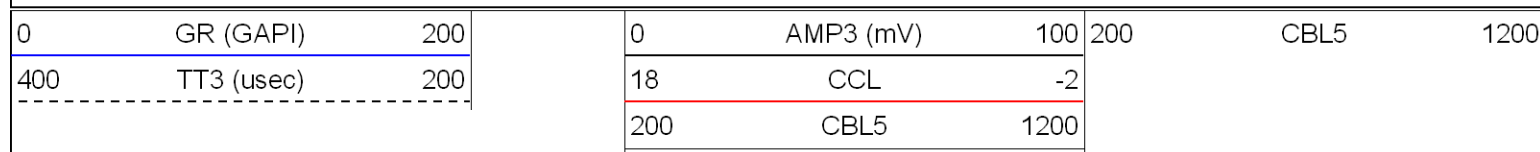


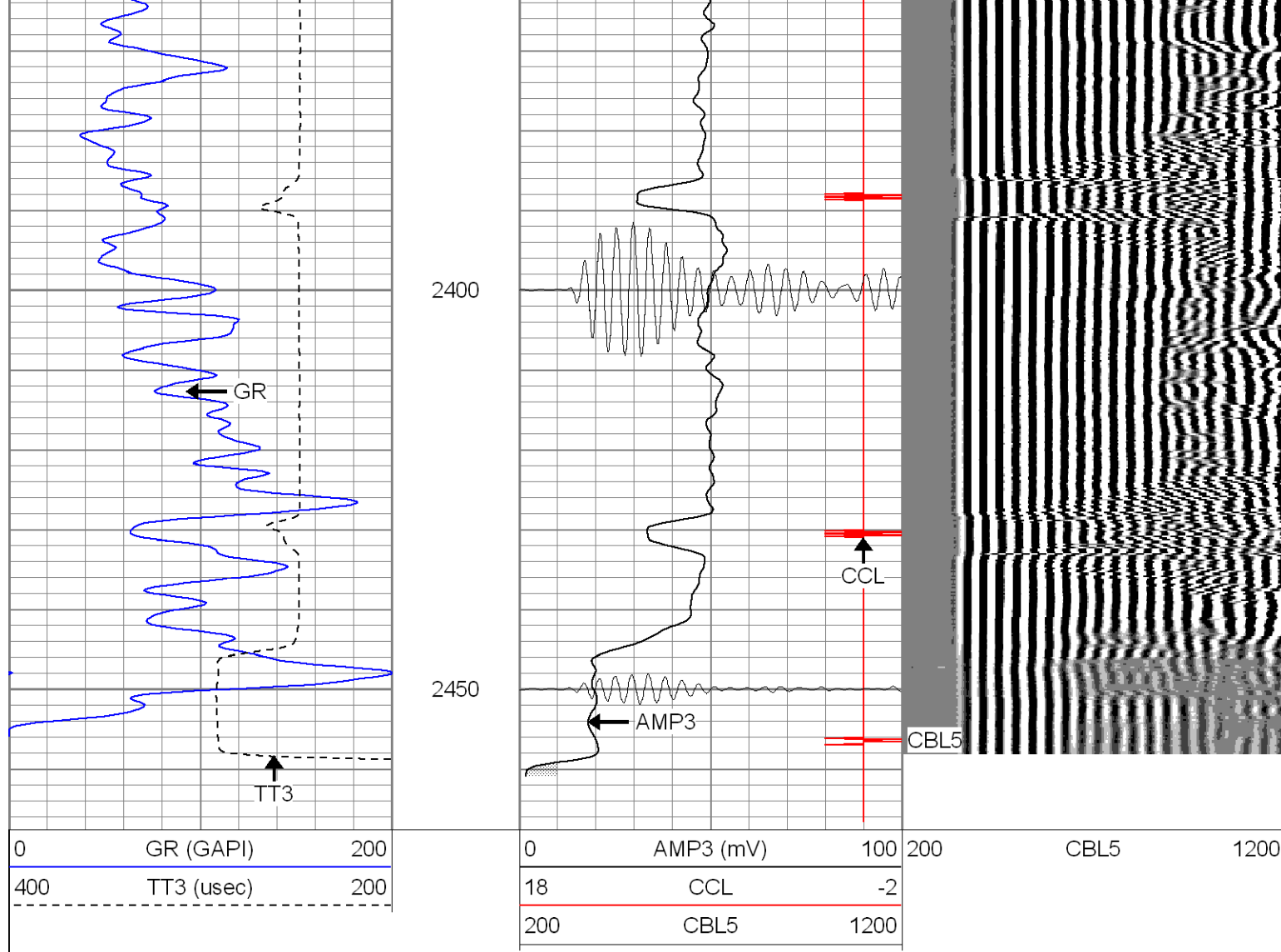
SUPERIOR

Black Lick, Pa.
Mercer, Pa.
Wooster, Oh.
Cleveland, Ok.
Trinidad, Co.

Repeat Section

Database File: tanana10507b.db
Dataset Pathname: pass1
Presentation Format: cblrt
Dataset Creation: Fri Oct 05 15:44:23 2007 by Log Std Casedhole 07051
Charted by: Depth in Feet scaled 1:240





Calibration Report

Database File: tanana10507b.db
 Dataset Pathname: pass1
 Dataset Creation: Fri Oct 05 15:44:23 2007 by Log Std Casedhole 07051

Cement Bond Log Calibration Report

Serial Number:	Titan2		
Tool Model:	T2		
Performed:	Fri Oct 05 15:37:51 2007		
Depth:	0	ft	
Casing Diameter:	0	in	
	3' Spacing	5' Spacing	
Signal Zero:	0	0	mV
Calibrated Amplitude:	85	85	mV
Reading at Signal Zero:	-0.04	0	V
Reading in Free Pipe:	1.8	1.6	V
Gain:	46.1957	53.125	
Offset:	1.84783	0	

Gamma Ray Calibration Report

Serial Number:	TITAN2
Tool Model:	T2
Performed:	Fri Sep 28 11:10:20 2007

Calibrator Value:	1.0	GAPI
Background Reading:	0.0	cps
Calibrator Reading:	1.0	cps
Sensitivity:	1.5000	GAPI/cps