



PHOENIX SURVEYS, INC.

COMPENSATED DENSITY  
COMPENSATED NEUTRON  
DUAL INDUCTION

Company Petroleum Development Corporation		
Well Whomble 22-32		
Field Beecher Island		
County Yuma State/Province Colorado		
Location	2080' FNL & 1871' FWL SE NW Sec. 32, Twp. 2S, Rge. 43W	
Other Services None		
Permanent Datum	GL	Elevation 3629
Log Measured From	KB	K.B. 3634 D.F. 3633
Drilling Measured From	KB	G.L. 3629
Date	April 9, 2007	
Run Number	1	
Depth Driller	1685	
Depth Logger	1687	
Bottom Logged Interval	1687	
Top Log Interval	Casing	
Casing Driller	290	
Casing Logger	290	
Bit Size	6.25"	
Type Fluid in Hole	Polymer Kcl	
Density / Viscosity	8.6 / 58	
PH / Fluid Loss	10.0 / NA	
Source of Sample	Flowline	
Rtn @ Meas. Temp	.17 @ 57° F	
Rmtf @ Meas. Temp	.14 @ 57° F	
Rmrc @ Meas. Temp	.20 @ 57° F	
Source of Rmtf / Rmrc	Measure / Calc	
Rm @ BHT	.12 @ 82° F	
Time Circulation Stopped	1200	
Time Logger on Bottom	1430	
Maximum Recorded Temperature	82° F	
Equipment Number	4041	
Location	Brighton, CO	
Recorded By	Schoenrogge	
Witnessed By	Dean Wallace	Scott Utz Norman Landphere

<<< Fold Here >>>

All interpretations are opinions based on inferences from electrical or other measurements and we cannot and do not guarantee the accuracy or correctness of any interpretation, and we shall not, except in the case of gross or willful negligence on our part, be liable or responsible for any loss, costs, damages, or expenses incurred or sustained by anyone resulting from any interpretation made by any of our officers, agents or employees. These interpretations are also subject to our general terms and conditions set out in our current Price Schedule.

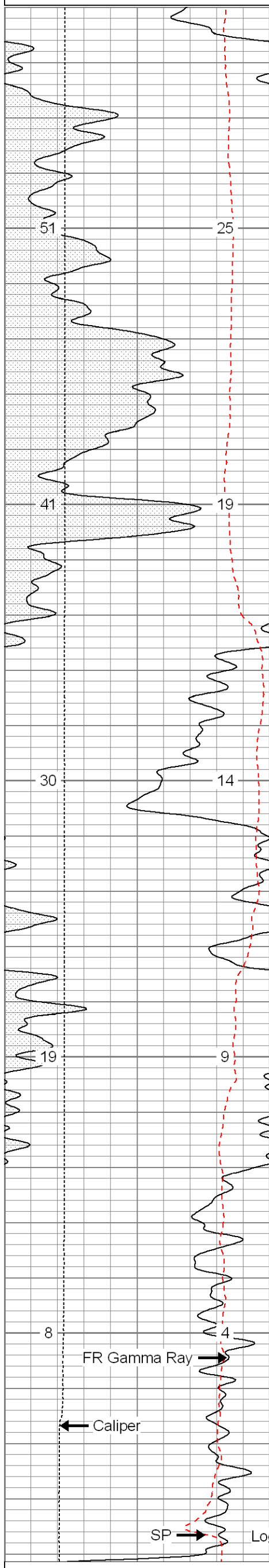
Comments

Annular volume calculated for 4-1/2" casing  
Western Well Drilling Rig D1  
Thank you for using Phoenix Surveys!!  
API #: 05-125-10586-00

Database File: 7014.db  
Dataset Pathname: pass3  
Presentation Format: pdce  
Dataset Creation: Mon Apr 09 14:18:21 2007 by Log Open-Cased 061129  
Charted by: Depth in Feet scaled 1:240

0	Gamma Ray (GAPI)	200
0	SP (mV)	200
4	Caliper (in)	14

0.2	Deep Resistivity (Ohm-m)	20	60	Density Porosity (pu)	0
0.2	Shallow Resistivity (Ohm-m)	20	60	Neutron Porosity (pu)	0
0.2	Medium Resistivity (Ohm-m)	20			



1500

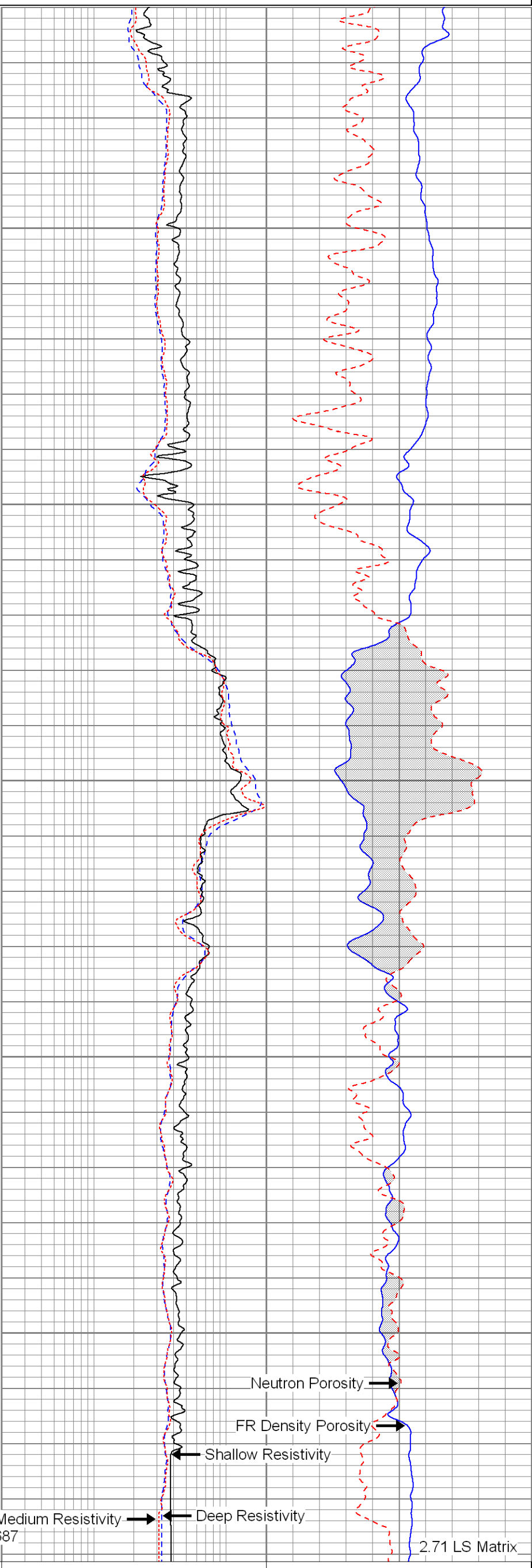
1600

FR Gamma Ray  
Caliper

SP

Logger's TD: 1687

0	Gamma Ray (GAPI)	200
0	SP (mV)	200
4	Caliper (in)	14



Neutron Porosity  
FR Density Porosity  
Shallow Resistivity  
Deep Resistivity  
Medium Resistivity

2.71 LS Matrix

0.2	Deep Resistivity (Ohm-m)	20	60	Density Porosity (pu)	0
0.2	Shallow Resistivity (Ohm-m)	20	60	Neutron Porosity (pu)	0
0.2	Medium Resistivity (Ohm-m)	20			