

EOG RESOURCES, INC.

CONSTRUCTION LAYOUT FOR

CRITTER CREEK #01-02H
SECTION 2, T11N, R63W, 6th P.M.
700' FNL 1950' FEL

FIGURE #1

SCALE: 1" = 60'
DATE: 01-19-10
DRAWN BY: D.R.B.

Proposed Access Road

F-1.2'
El. 295.4'

Approx.
Toe of
Fill Slope

F-0.4'
El. 296.2'

C-2.9'
El. 299.5'

NOTE:
Flare Pit is to
be located a min.
of 100' from the
Well Head.

Total Pit Capacity
= 670 Bbls.±
Total Pit Volume
= 140 Cu. Yds

40'
(1:1 Slope)
FLARE PIT
(4' Deep)

S18°47'58"E 4230.93'
(TO BOTTOM HOLE)

Cut/Fill
Transition Line

C-0.3'
El. 296.9'

F-0.7'
El. 295.9'

C-2.4'
El. 296.0'
(Btm. Pit)

C-0.1'
El. 296.7'

Total Pit Capacity
= 2,600 Bbls.±
Total Pit Volume
= 540 Cu. Yds

42'
35'
100'
RESERVE PITS
(3' Deep)
(1 1/2:1 SIDE SLOPE)

3' High Berm

Round Corners
as Needed

C-0.2'
El. 296.8'

C-3.2'
El. 296.8'
(Btm. Pit)

Existing
Drainage

F-0.1'
El. 296.5'

Reserve Pit Backfill
& Spoils Stockpile

Existing
Fenceline

C-2.0'
El. 298.6'

Approx.
Top of
Cut Slope

C-1.7'
El. 298.3'

Elev. Ungraded Ground At Loc. Stake = 5296.9'
FINISHED GRADE ELEV. AT LOC. STAKE = 5296.6'

UINTAH ENGINEERING & LAND SURVEYING

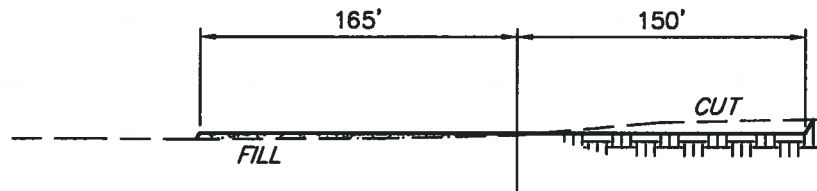
85 So. 200 East * Vernal, Utah 84078 * (435) 789-1017

1" = 40'
X-Section
Scale
1" = 100'

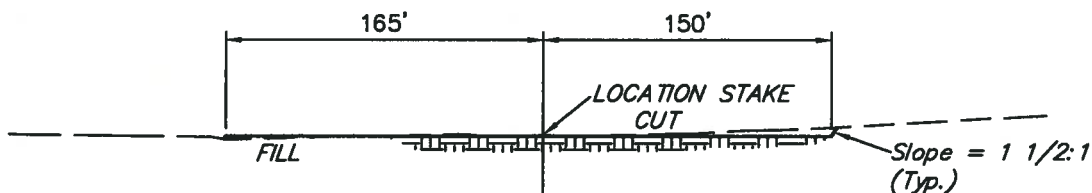
DATE: 01-19-10
DRAWN BY: D.R.B.

EOG RESOURCES, INC.
CONSTRUCTION LAYOUT CROSS SECTION FOR
CRITTER CREEK #01-02H
SECTION 2, T11N, R63W, 6th P.M.
700' FNL 1950' FEL

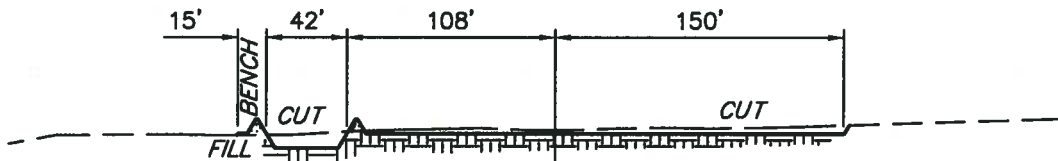
FIGURE #2



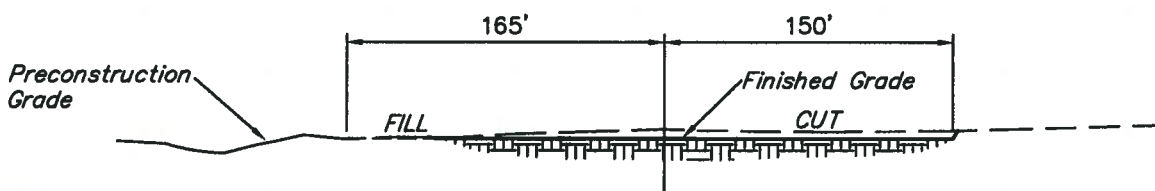
STA. 4+00



STA. 2+00



STA. 1+00



STA. 0+00

NOTE:

Topsoil should not be
Stripped Below Finished
Grade on Substructure Area.

APPROXIMATE ACREAGES
WELL SITE DISTURBANCE = ± 3.676 ACRES
ACCESS ROAD DISTURBANCE = ± 1.508 ACRES
TOTAL = ± 5.184 ACRES

* NOTE:
FILL QUANTITY INCLUDES
5% FOR COMPACTION

APPROXIMATE YARDAGES

(6") Topsoil Stripping = 2,400 Cu. Yds.
Remaining Location = 2,380 Cu. Yds.
TOTAL CUT = 4,780 CU.YDS.
FILL = 2,110 CU.YDS.

EXCESS MATERIAL = 2,670 Cu. Yds.
Topsoil & Pit Backfill = 2,670 Cu. Yds.
(1/2 Pit Vol.)
EXCESS UNBALANCE = 0 Cu. Yds.
(After Interim Rehabilitation)

UINTAH ENGINEERING & LAND SURVEYING
85 So. 200 East * Vernal, Utah 84078 * (435) 789-1017

EOG RESOURCES, INC.

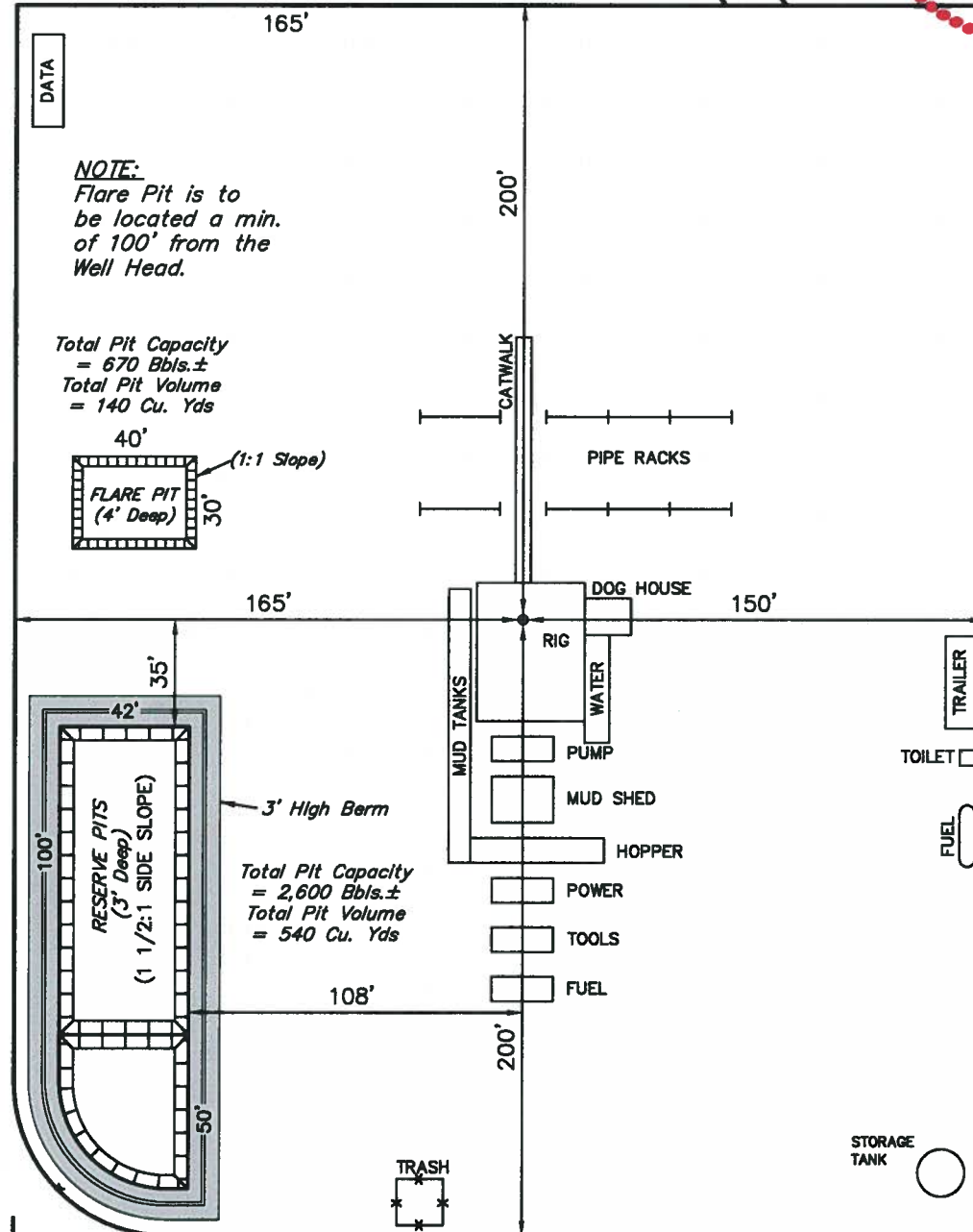
TYPICAL RIG LAYOUT FOR

CRITTER CREEK #01-02H
SECTION 2, T11N, R63W, 6th P.M.
700' FNL 1950' FEL

FIGURE #3



SCALE: 1" = 60'
DATE: 01-19-10
DRAWN BY: D.R.B.



EOG RESOURCES, INC.
RECLAMATION DIAGRAM FOR
CRITTER CREEK #01-02H
SECTION 2, T11N, R63W, 6th P.M.
700' FNL 1950' FEL

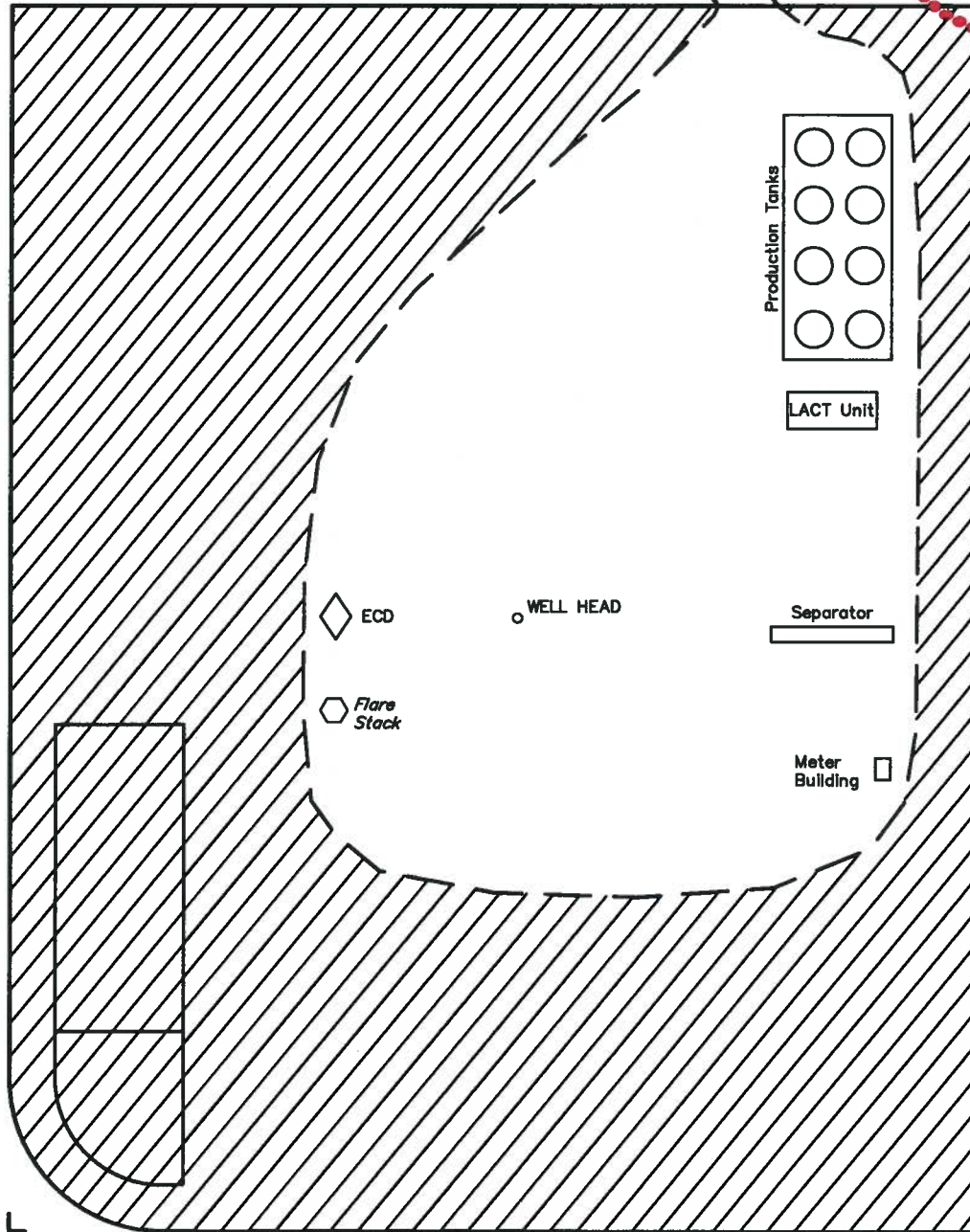
FIGURE #4



SCALE: 1" = 60'
DATE: 01-19-10
DRAWN BY: D.R.B.



Access Road



APPROXIMATE ACREAGES
UN-RECLAIMED AREA = ± 1.076 ACRES

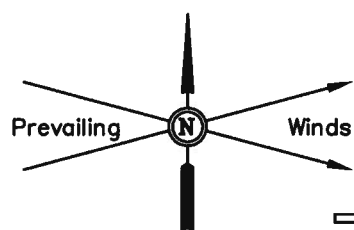


RECLAIMED AREA

UINTAH ENGINEERING & LAND SURVEYING
85 So. 200 East * Vernal, Utah 84078 * (435) 789-1017

PLOT PLAN FOR TANK BATTERY

SCALE: 1" = 1000'
DATE: 01-19-10
DRAWN BY: D.R.B.



Separator

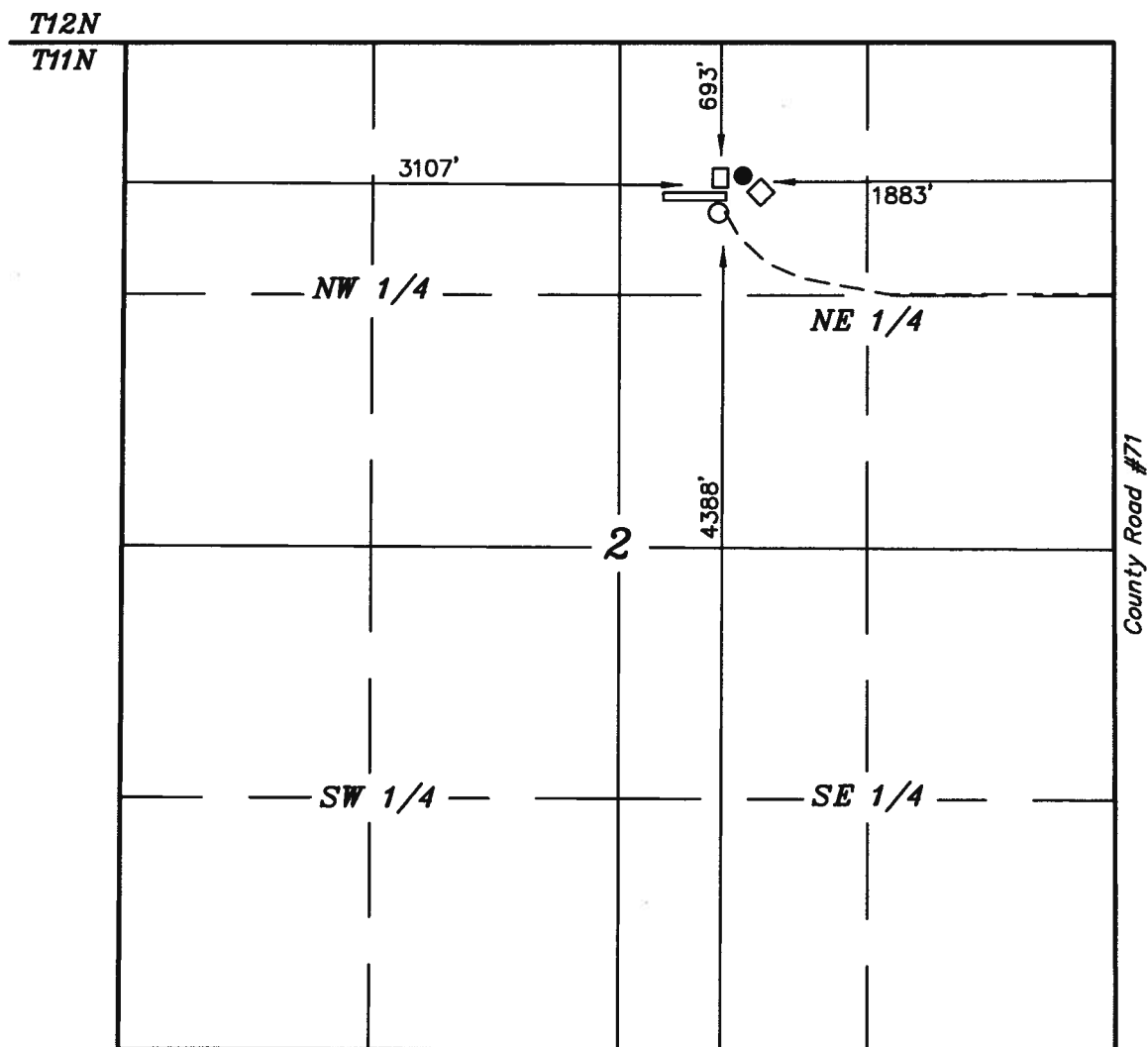
● **Well Head**

☐ Meter Building

Access

◇ ECD

○ Production Tanks



UINTAH ENGINEERING & LAND SURVEYING
85 So. 200 East * Vernal, Utah 84078 * (435) 789-1017