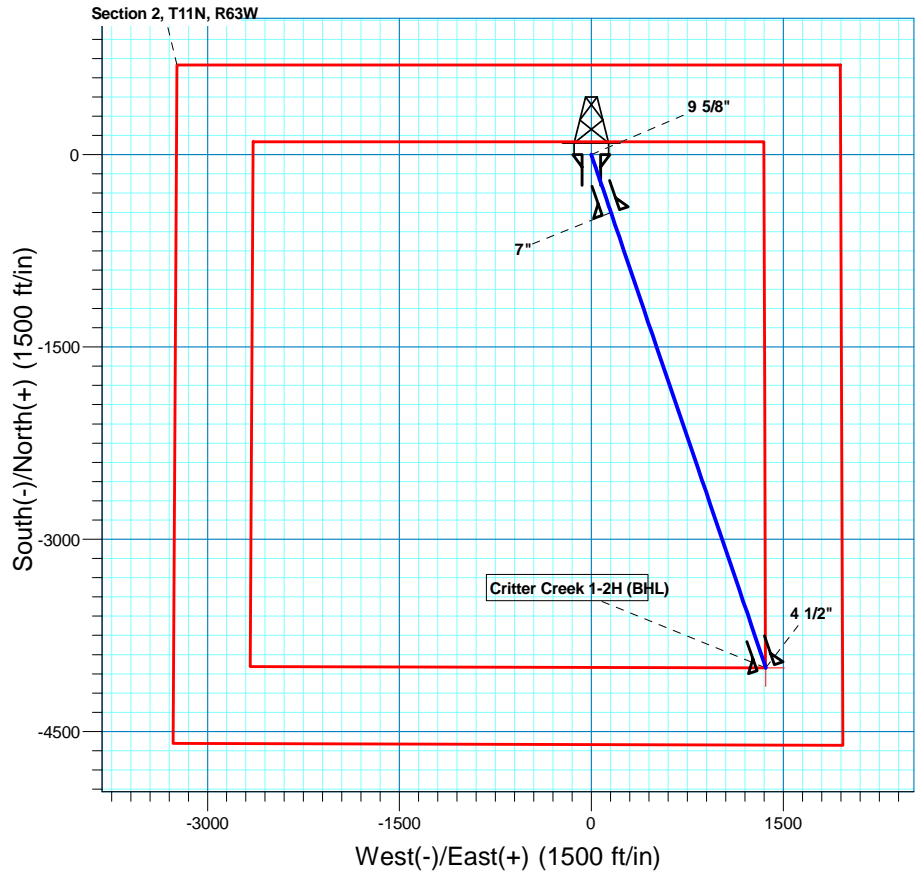
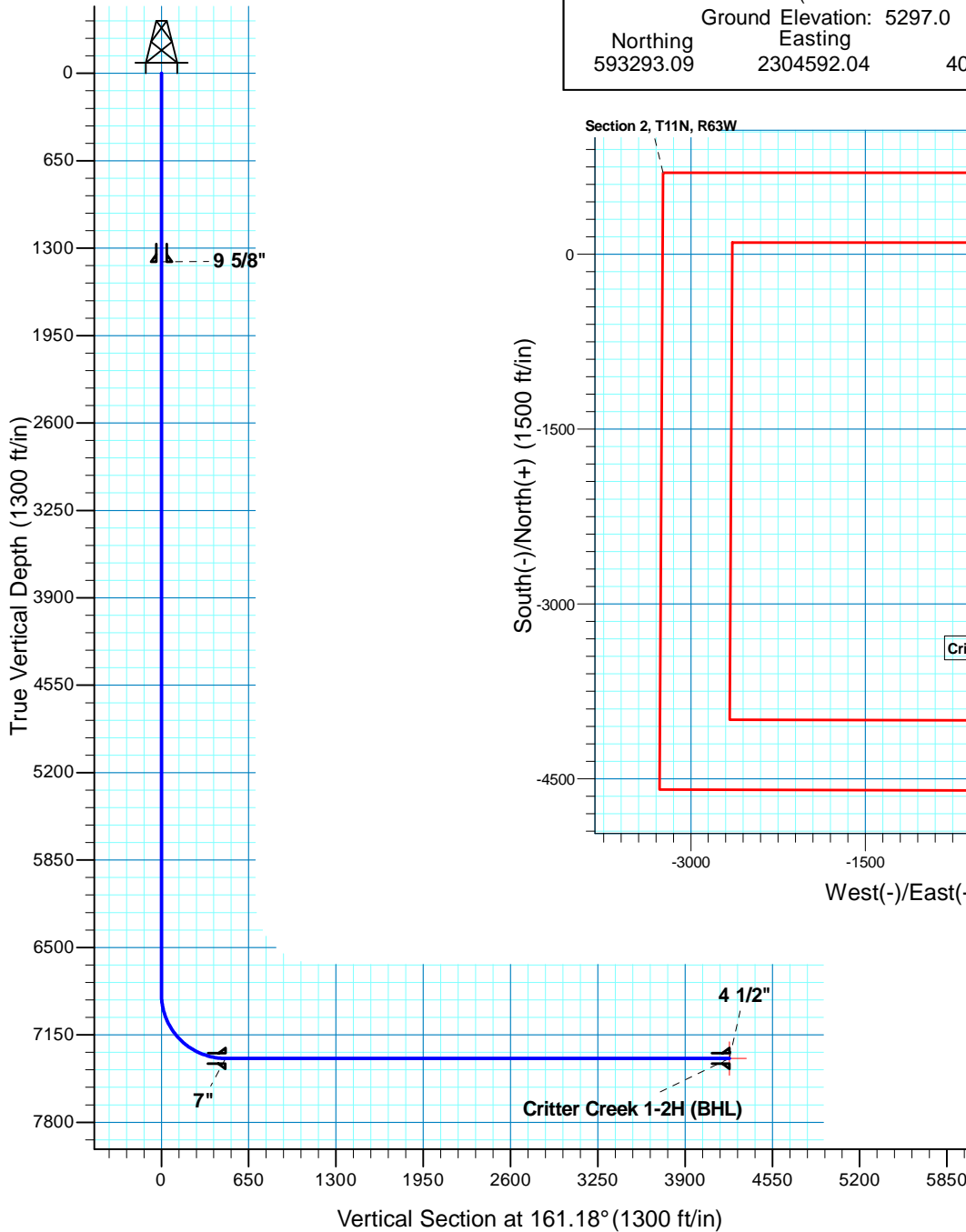


Critter Creek 1-2H

Section 2 T11N R63W

Weld County, CO

Surface Location			
NAD 1927 (NADCON CONUS) Colorado North 501			
Ground Elevation: 5297.0 RIG @ 5322.0ft (TBD)			
Northing	Easting	Latitude	Longitude
593293.09	2304592.04	40° 57' 24.412 N	104° 23' 50.269 W



T M

Azimuths to True North
Magnetic North: 8.86°

Magnetic Field
Strength: 53621.6snT
Dip Angle: 67.62°
Date: 1/22/2010
Model: IGRF200510

Project: DJ - Hereford Ranch
Site: Critter Creek 01-02H
Well: Critter Creek 1-2H
Plan: APD

SECTION DETAILS

Sec	MD	Inc	Azi	TVD	+N/-S	+E/-W	DLeg	TFace	VSec	Target
1	0.0	0.00	0.00	0.0	0.0	0.0	0.00	0.00	0.0	
2	6847.5	0.00	0.00	6847.5	0.0	0.0	0.00	0.00	0.0	
3	7597.5	90.00	161.18	7325.0	-451.9	154.0	12.00	161.18	477.5	
4	11350.0	90.00	161.18	7325.0	-4003.8	1364.5	0.00	0.00	4230.0	Critter Creek 1-2H (BHL)

TARGET DETAILS

Name	TVD	+N/-S	+E/-W	Northing	Easting	Latitude	Longitude	Shape
Critter Creek 1-2H (BHL)	7325.0	-4003.8	1364.5	589306.54	2306006.25	40° 56' 44.851 N	104° 23' 32.489 W	Point