



**SUPERIOR**  
Black Lick, Pa.  
Mercer, Pa.  
Wooster, Oh.  
Cleveland, Ok.  
Trinidad, Co.

# CEMENT BOND GAMMA RAY LOG

Company XTO Energy Inc.  
Well Hill Ranch 36-02  
Field Purgatorie River  
County Las Animas  
State CO

Company XTO Energy Inc.  
Well Hill Ranch 36-02  
Field Purgatorie River  
County Las Animas State CO

Location: API #: 05 071 00  
843' FNL & 1489' FEL

SEC 36 TWP 34S RGE 67W

Permanent Datum Ground Level Elevation 7789'  
Log Measured From Ground Level  
Drilling Measured From Ground Level

Other Services  
Pressure  
Control  
Elevation  
K.B. -----  
D.F. -----  
G.L. 7789'

Date

4-10-07

Run Number

One

Depth Driller

2420'

Depth Logger

2298'

Bottom Logged Interval

2296

Top Log Interval

Surface

Open Hole Size

7 7/8"

Type Fluid

Water

Density / Viscosity

///

Max. Recorded Temp.

///

Estimated Cement Top

1080'

Time Well Ready

ROA

Time Logger on Bottom

8:30AM

Equipment Number

T0698

Location

Trinidad

Recorded By

J Sinerros

Witnessed By

Mr. Mike Polley

Run Number

Bit

From

To

Size

Weight

From

To

Size

Wgt/Ft

Top

Bottom

Surface String

8 5/8"

Prot. String

5 1/2"

Production String

00

Liner

N/A

<<< Fold Here >>>

All interpretations are opinions based on inferences from electrical or other measurements and we cannot and do not guarantee the accuracy or correctness of any interpretation, and we shall not, except in the case of gross or willful negligence on our part, be liable or responsible for any loss, costs, damages, or expenses incurred or sustained by anyone resulting from any interpretation made by any of our officers, agents or employees. These interpretations are also subject to our general terms and conditions set out in our current Price Schedule.

## Comments

Lorencito to Hill Ranch lease 3 miles to top of hill, location on right side of road.



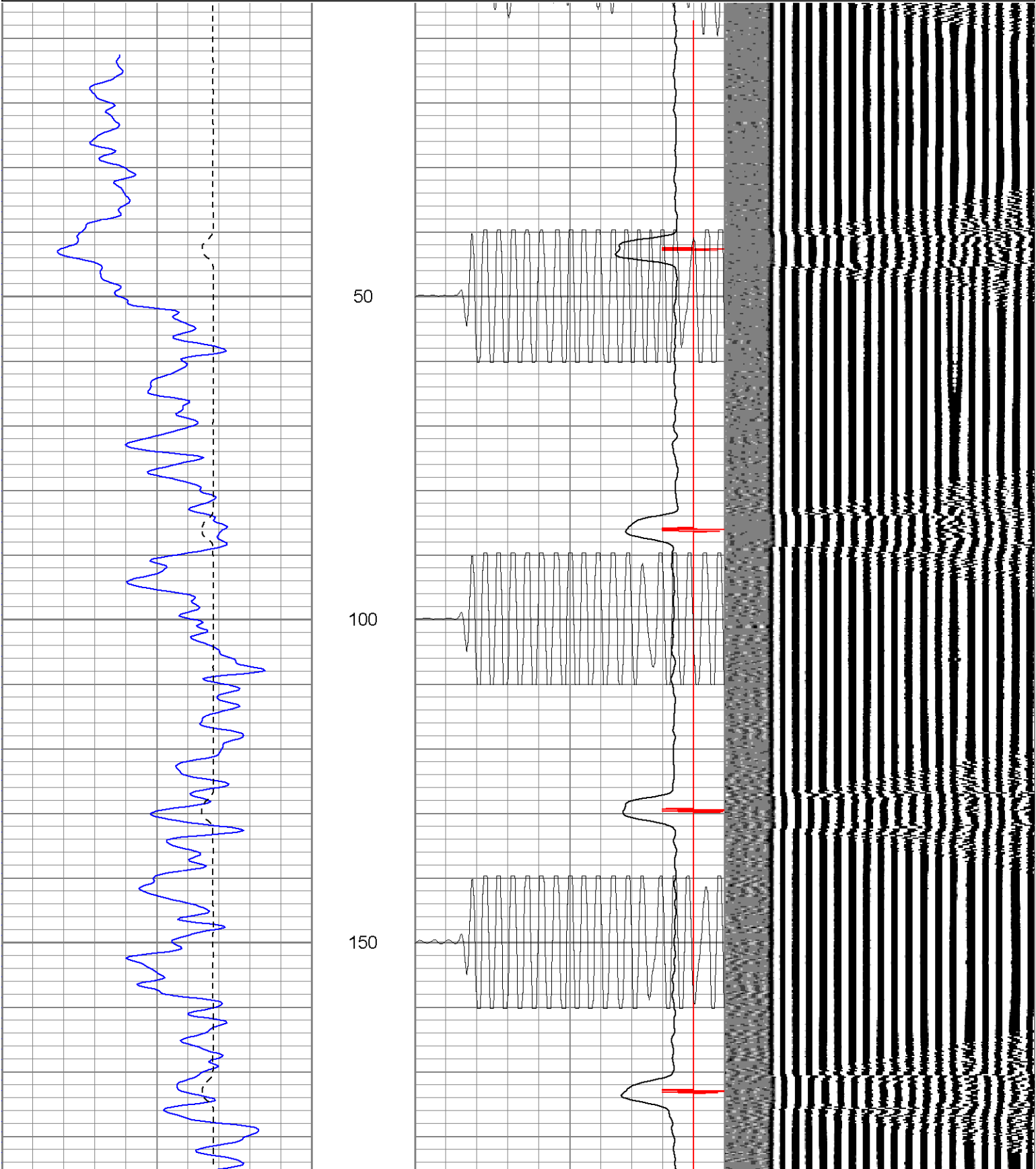
**SUPERIOR**

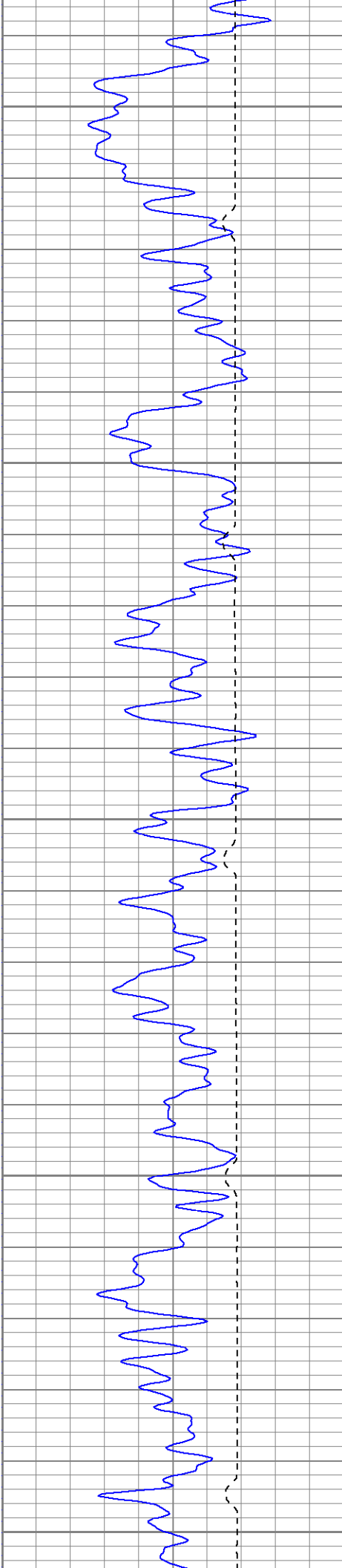
Black Lick, Pa.  
Mercer, Pa.  
Wooster, Oh.  
Cleveland, Ok.  
Trinidad, Co.

# Main Pass (1000PSI)

Database File: hr360241007b.db  
Dataset Pathname: pass2  
Presentation Format: cblrt  
Dataset Creation: Mon Apr 09 17:30:54 2007 by Log Open-Cased 060407  
Charted by: Depth in Feet scaled 1:240

0	GR (GAPI)	200	0	AMP3 (mV)	100	200	Variable Density	1200
200	GR (GAPI)	400	18	CCL	-2			
400	TT3 (usec)	200	200	CBL5	1200			





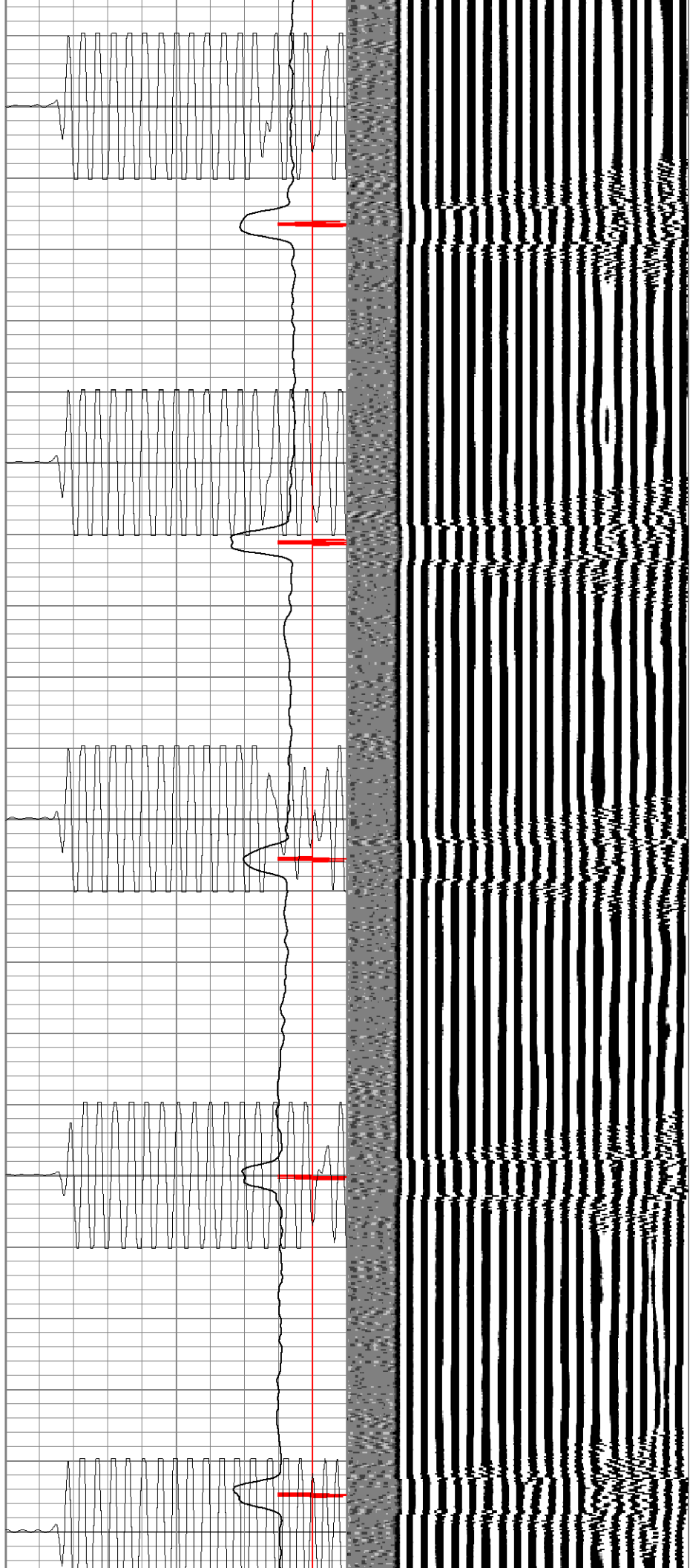
200

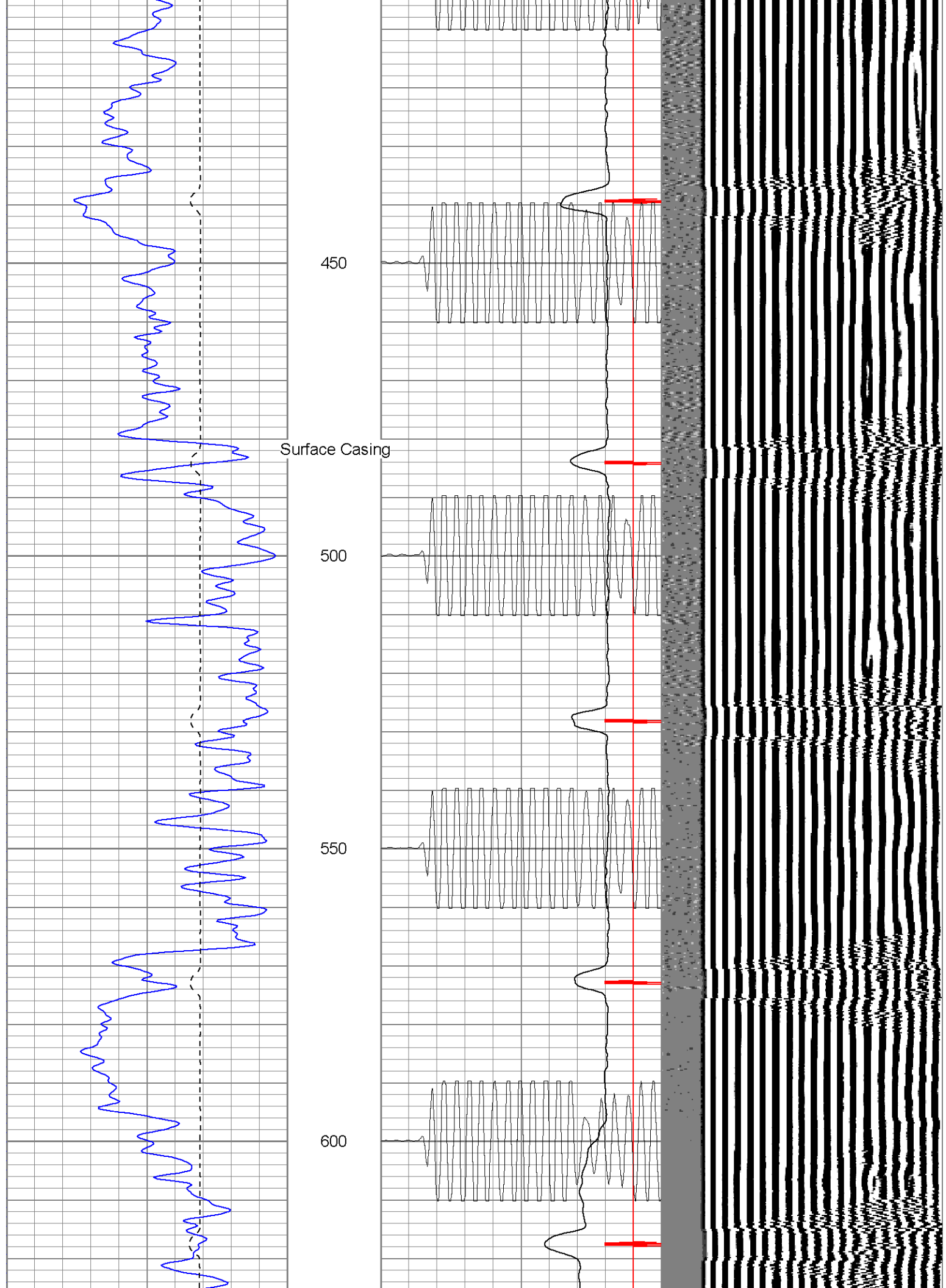
250

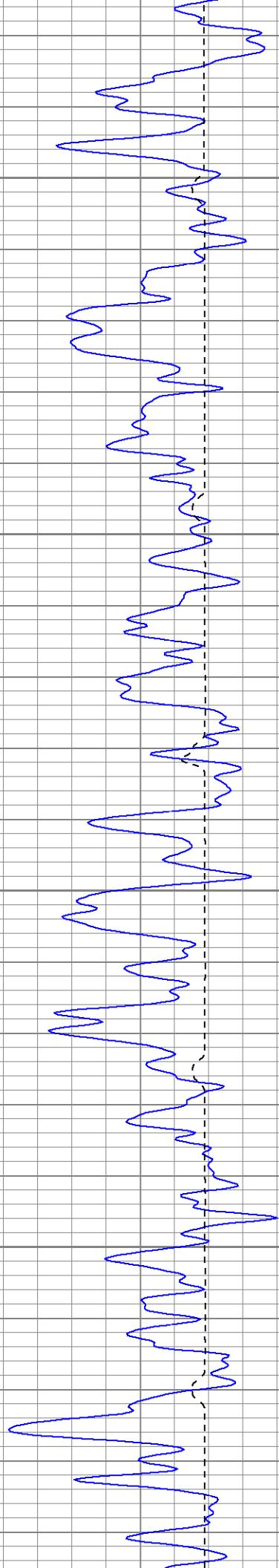
300

350

400





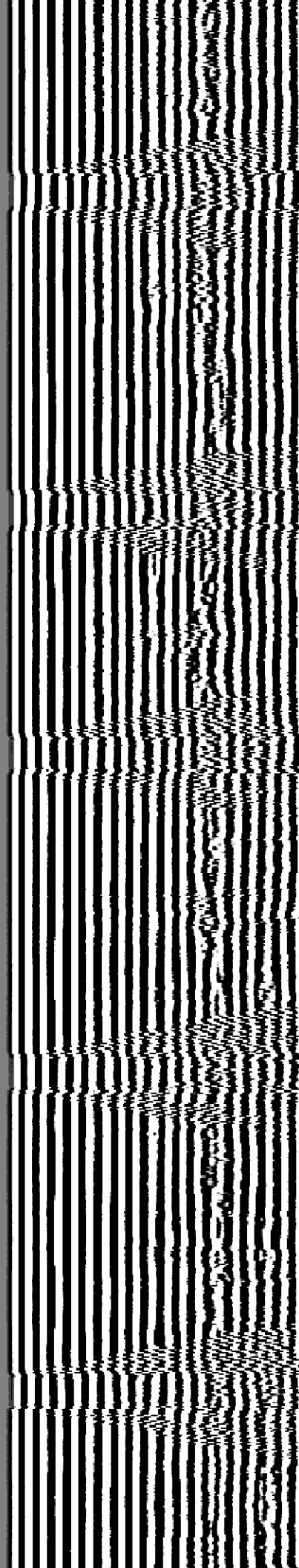
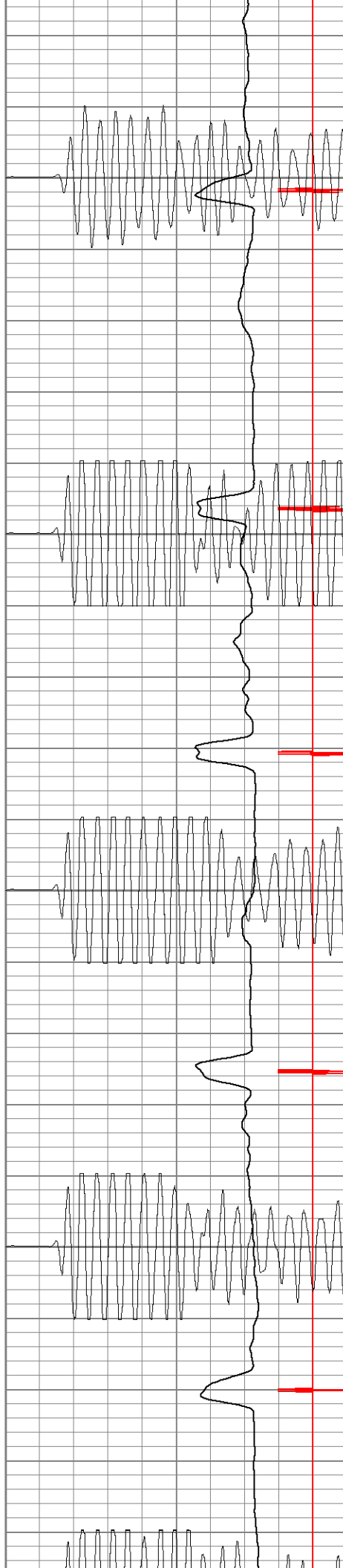


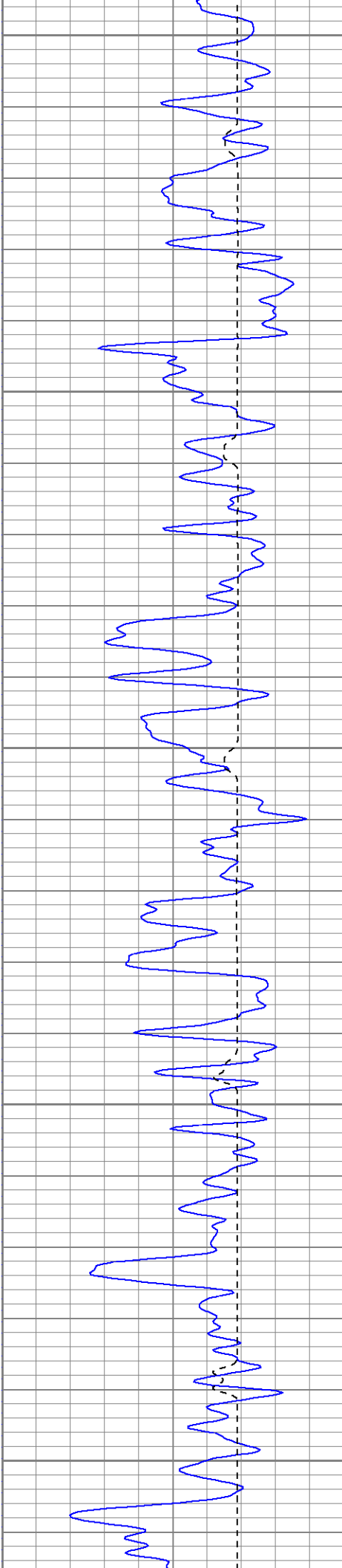
650

700

750

800





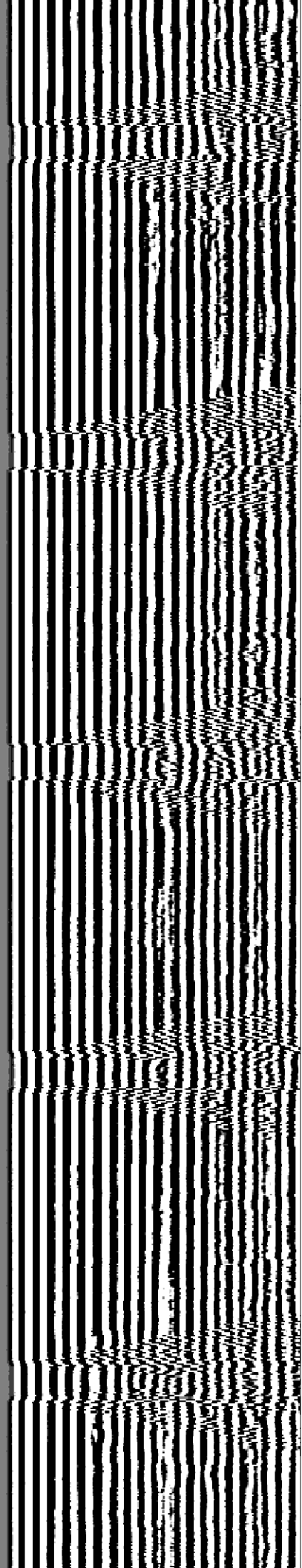
850

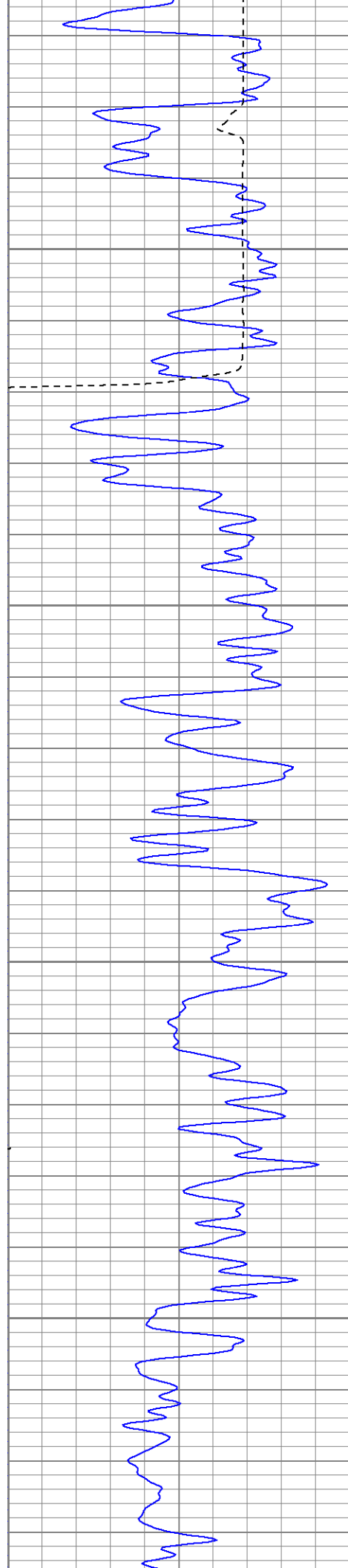
900

950

1000

1050





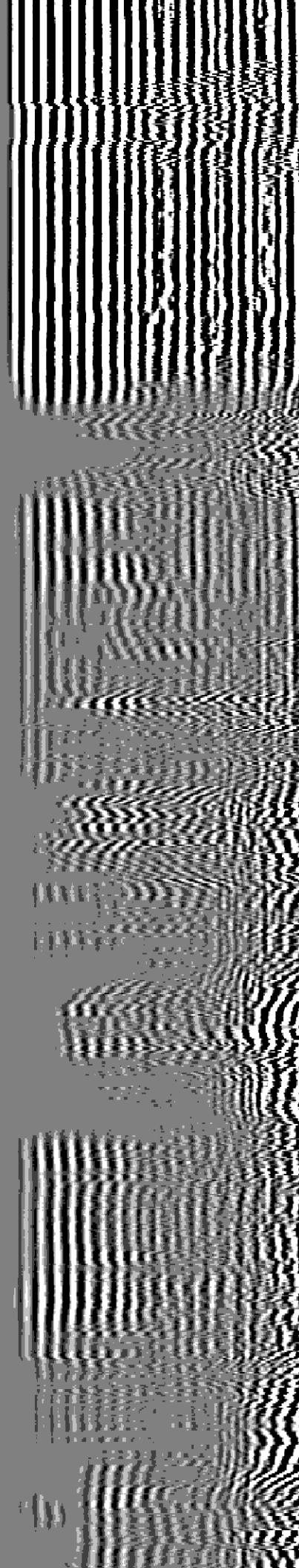
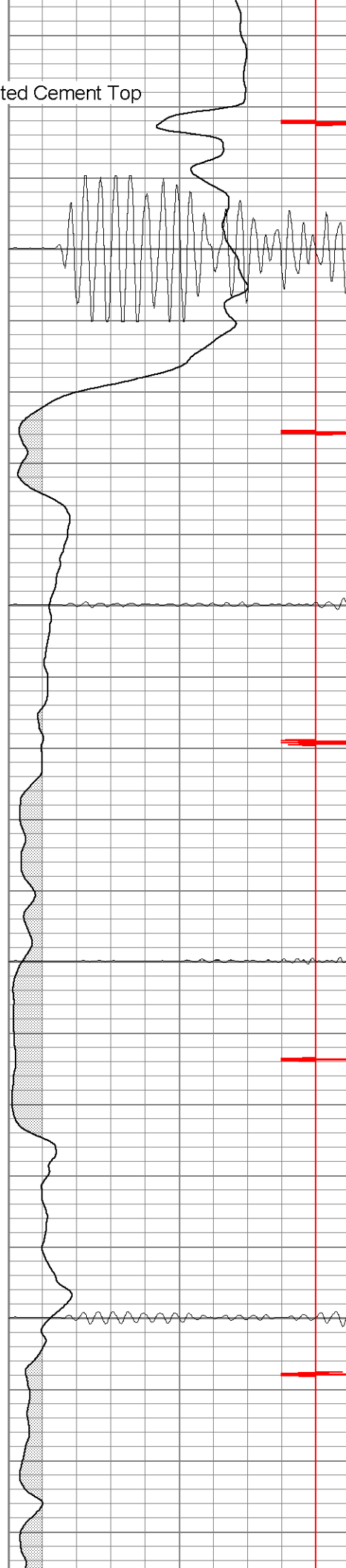
Estimated Cement Top

1100

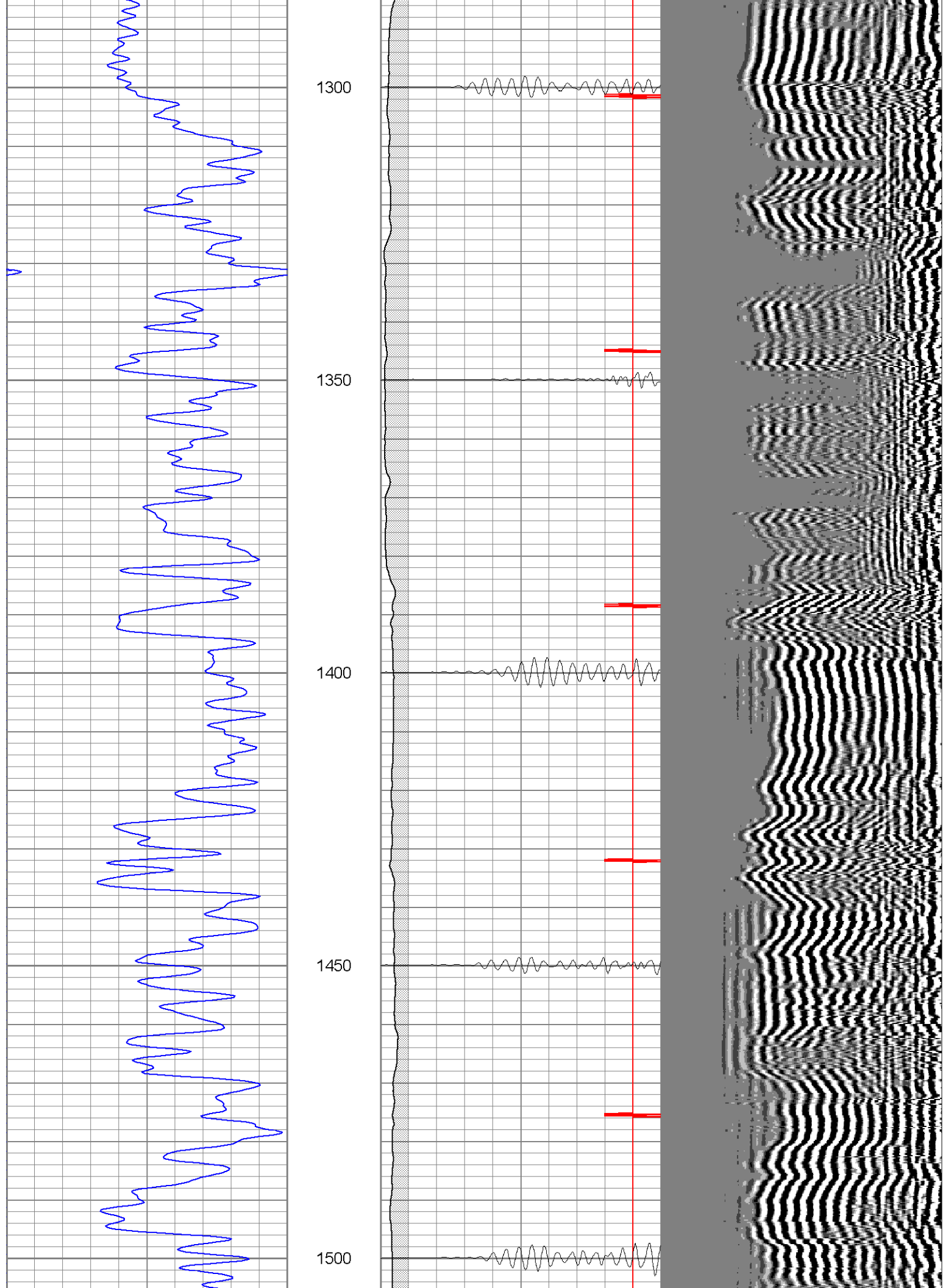
1150

1200

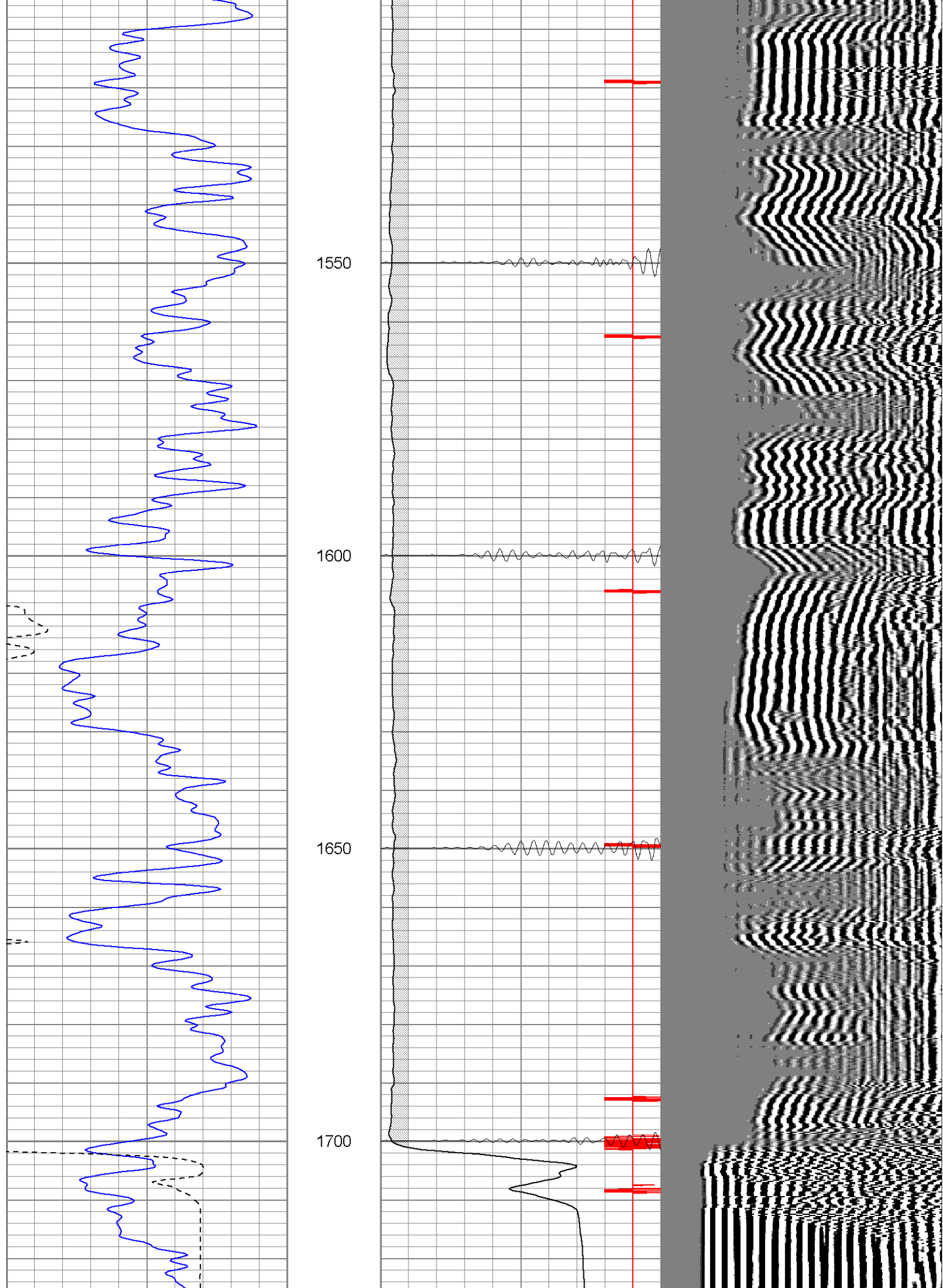
1250

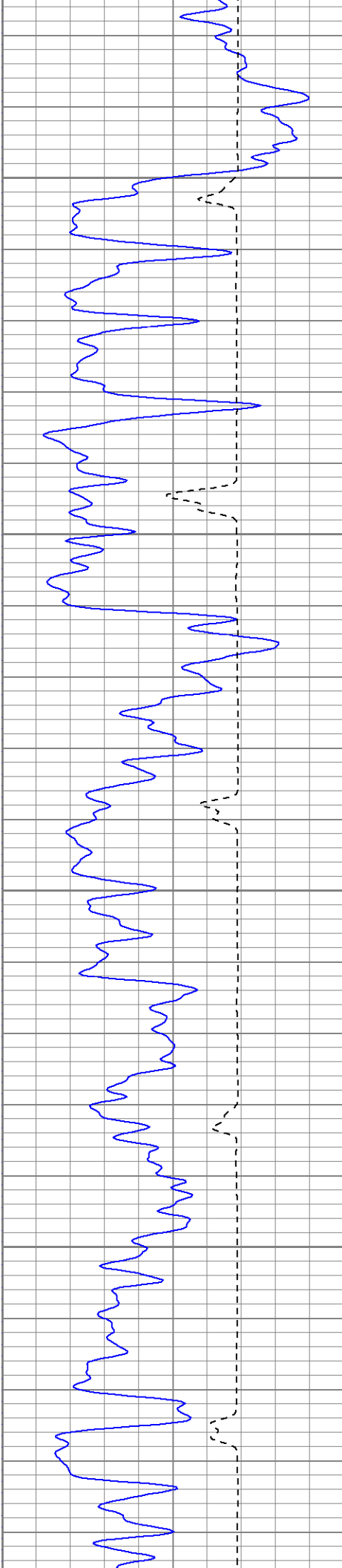










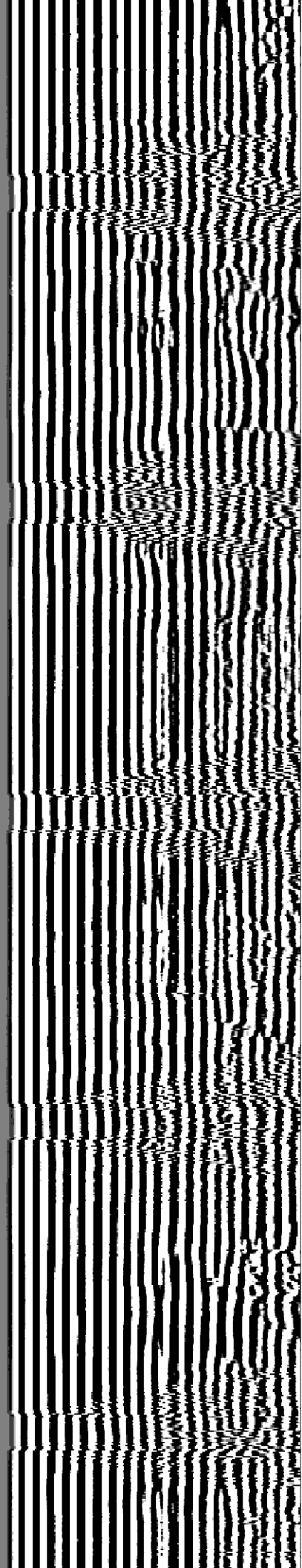
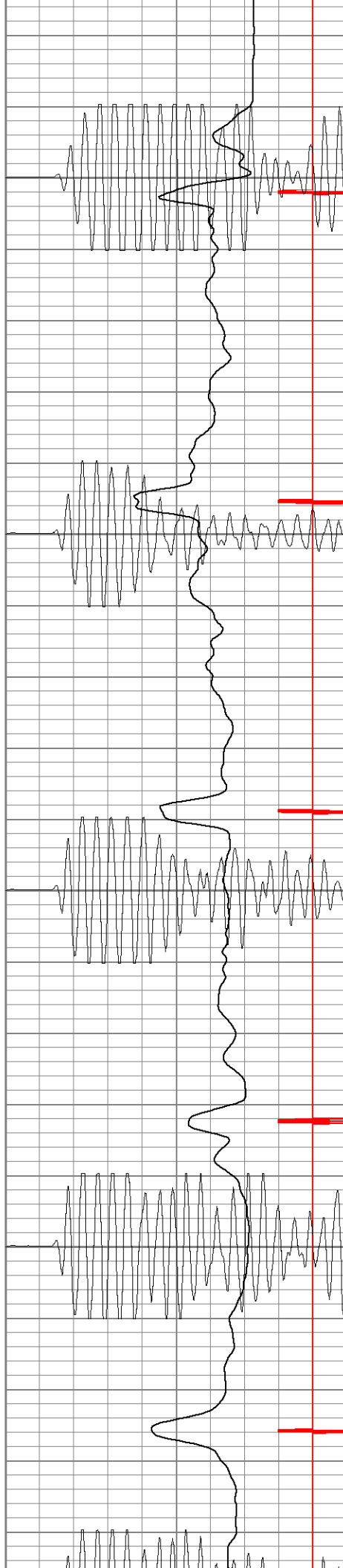


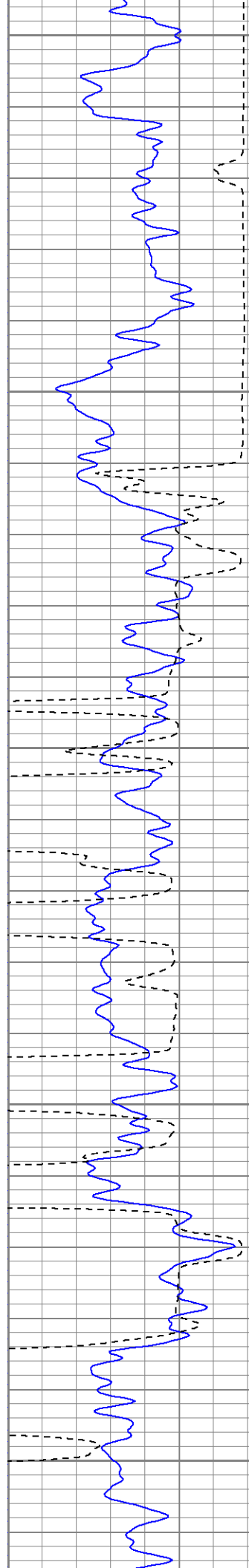
1750

1800

1850

1900





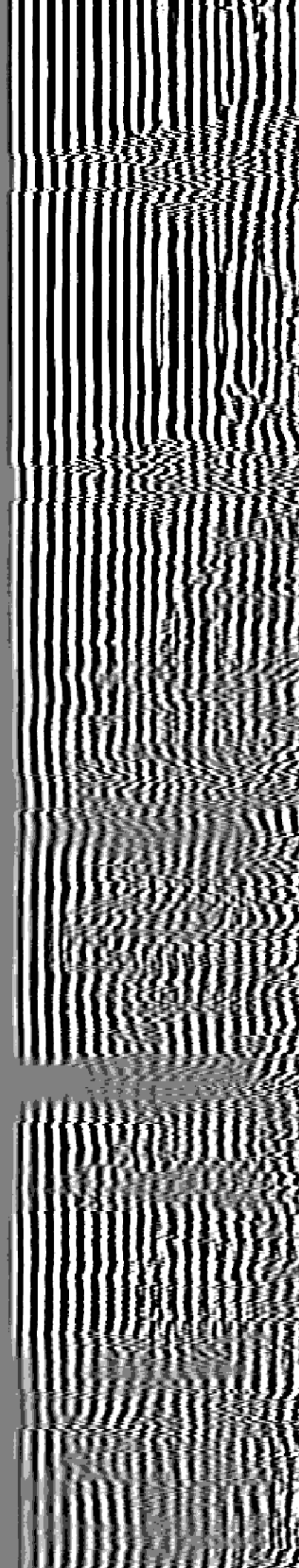
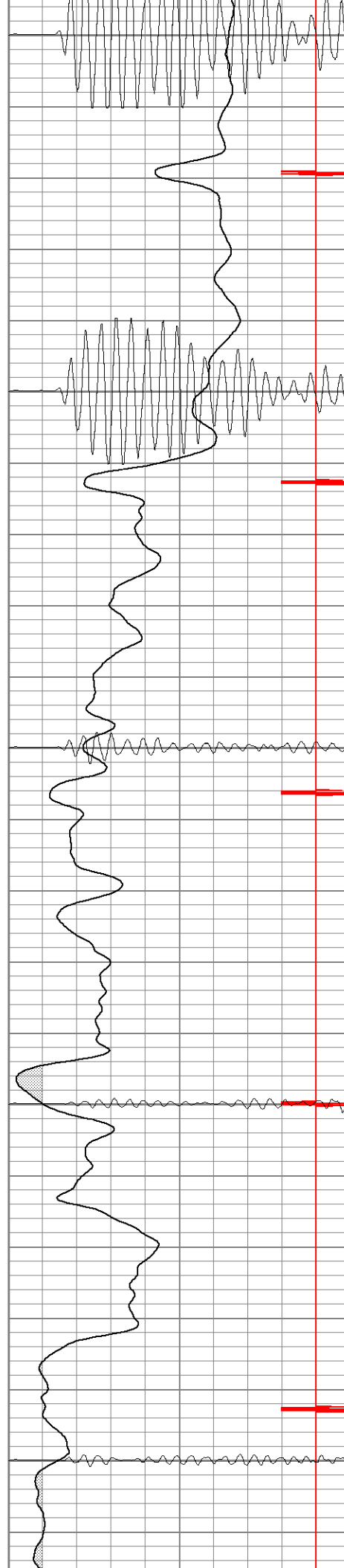
1950

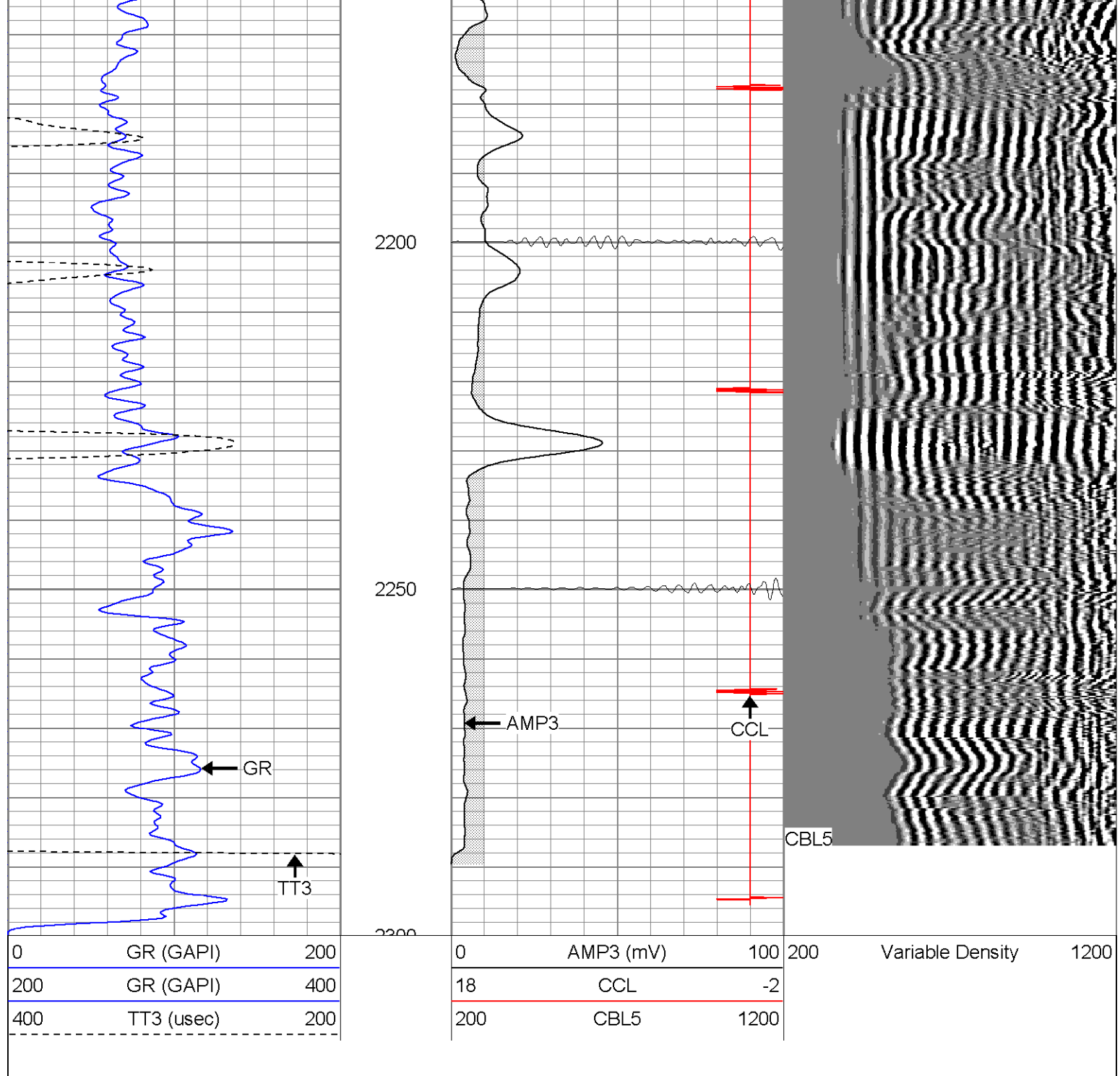
2000

2050

2100

2150





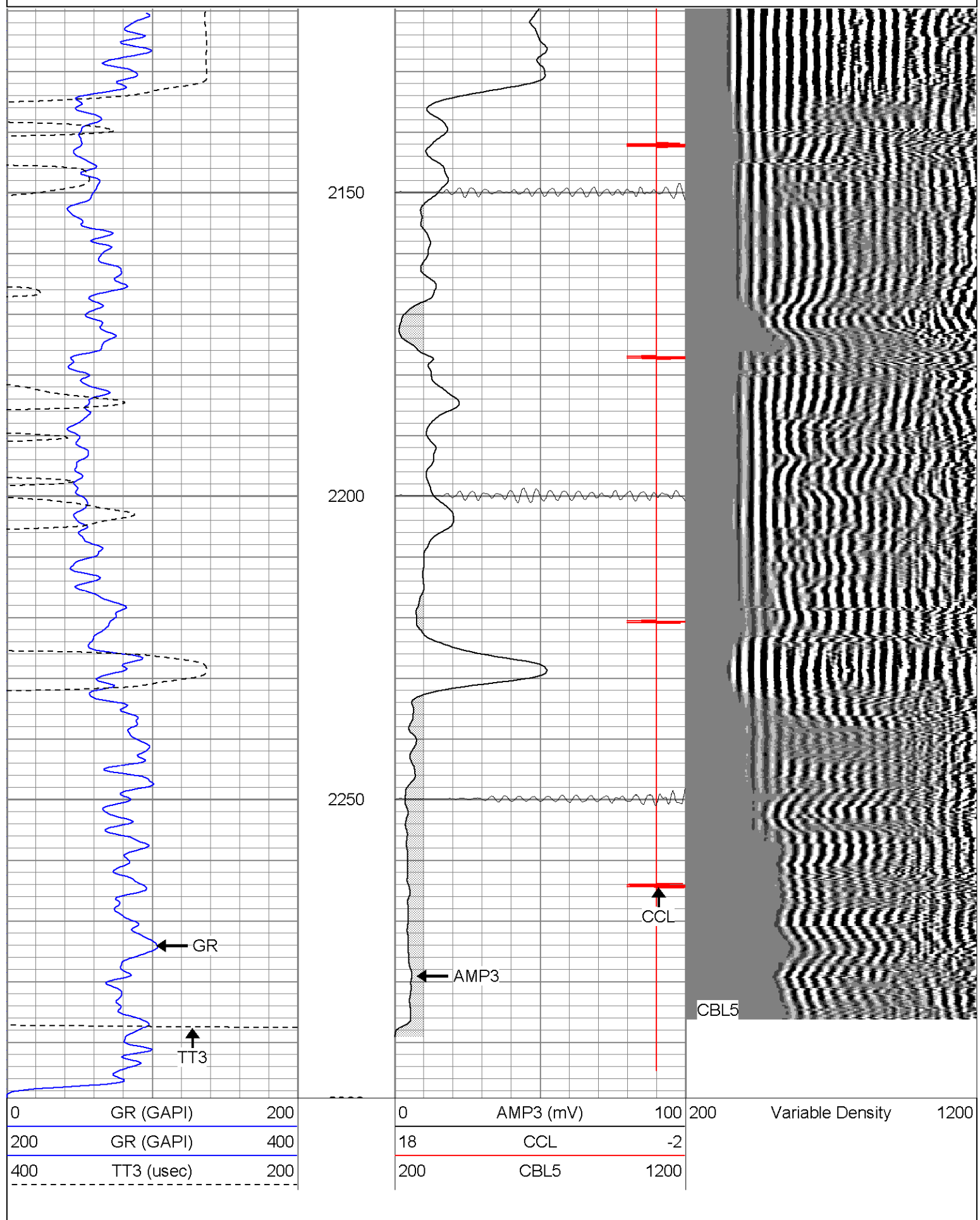
**SUPERIOR**

Black Lick, Pa.  
Mercer, Pa.  
Wooster, Oh.  
Cleveland, Ok.  
Trinidad, Co.

# Repeat Section (0PSI)

Database File: hr360241007b.db  
Dataset Pathname: pass1  
Presentation Format: cblrt  
Dataset Creation: Mon Apr 09 17:14:19 2007 by Log Open-Cased 060407  
Charted by: Depth in Feet scaled 1:240

0	GR (GAPI)	200	0	AMP3 (mV)	100	200	Variable Density	1200
200	GR (GAPI)	400	18	CCL	-2			
400	TT3 (usec)	200	200	CBL5	1200			



### Calibration Report

Database File: hr360241007b.db

Dataset Pathname: pass1

Dataset Creation: Mon Apr 09 17:14:19 2007 by Log Open Cased 060407

## Gamma Ray Calibration Report

Serial Number: Titan2.75  
 Tool Model: 2.75  
 Performed: Mon Apr 09 09:53:52 2007  
  
 Calibrator Value: 200.0 GAPI  
  
 Background Reading: 40.0 cps  
 Calibrator Reading: 240.0 cps  
  
 Sensitivity: 1.1000 GAPI/cps

## Cement Bond Log Calibration Report

Serial Number: Titan4  
 Tool Model: 4  
 Performed: Mon Apr 09 17:03:33 2007  
  
 Depth: 1054.62 ft  
 Casing Diameter: 5.5 in  
  
 3' Spacing 5' Spacing  
  
 Signal Zero: 0 1 mV  
 Calibrated Amplitude: 85 85 mV  
 Reading at Signal Zero: 0.00161133 0.0143555 V  
 Reading in Free Pipe: 1.8 1.65081 V  
  
 Gain: 47.2645 51.3306  
 Offset: 0.2 0.263125

Sensor	Offset (ft)	Schematic	Description	Len (ft)	OD (in)	Wt (lb)
CHD	20.38		CHD-None (0)	0.75	1.50	5.00
CENT	19.63		CENT-X (2)	3.00	1.69	25.00
WVF5	12.82		CBL-4 (Titan4)	8.15	2.25	110.00
WVF3	11.82					
CENT	8.48		CENT-X (1)	3.00	1.69	25.00
CCL	4.27		CCL-2.75 (Titan2.75)	1.71	2.75	15.00
GR	1.42		GR-2.75 (Titan2.75) Two Point	3.77	2.75	25.00

Dataset: hr360241007b.db: field/well/run1/pass1  
 Total Length: 20.38 ft  
 Total Weight: 205.00 lb  
 O.D. 2.75 in