



SUPERIOR
WELL SERVICES
Black Lick, Pa.
Mercer, Pa.
Wooster, Oh.
Cleveland, Ok.
Trinidad, Co.

CEMENT BOND LOG

Company XTO Energy Inc.
Well Golden Eagle 18-15
Field Purgatorie River
County Las Animas State CO

Location: API # : 05 071 08799 00

448' FSL & 1746' FEL

SEC 18 TWP 33S RGE 67W

Permanent Datum Ground Level Elevation 6932'
Log Measured From Ground Level
Drilling Measured From Ground Level

Elevation
K.B. -----
D.F. -----
G.L. 7441'

Date 6-11-07

Run Number	Four	
Depth Driller	2250'	
Depth Logger	1112'	
Bottom Logged Interval	1108'	
Top Log Interval	Surface	
Open Hole Size	7 7/8"	
Type Fluid	Water	
Density / Viscosity	///	
Max. Recorded Temp.	-----	
Estimated Cement Top	Surface	
Time Well Ready	Portable Mast	
Time Logger on Bottom	13:30	
Equipment Number	T720	
Location	Trinidad	
Recorded By	Larson	
Witnessed By		

Borehole Record				Tubing Record			
Run Number	Bit	From	To	Size	Weight	From	To
Casing Record		Size		Wgt/Ft		Top	Bottom
Surface String		8 5/8				0'	570'
Prot. String							
Production String		5.5					NA
Liner							

<<< Fold Here >>>

All interpretations are opinions based on inferences from electrical or other measurements and we cannot and do not guarantee the accuracy or correctness of any interpretation, and we shall not, except in the case of gross or willful negligence on our part, be liable or responsible for any loss, costs, damages, or expenses incurred or sustained by anyone resulting from any interpretation made by any of our officers, agents or employees. These interpretations are also subject to our general terms and conditions set out in our current Price Schedule.

Comments

Well Directions:
Rancho Escondido left at Tee Pee Dead End on Location



SUPERIOR
Black Lick, Pa.
Mercer, Pa.
Wooster, Oh.
Cleveland, Ok.
Trinidad, Co.

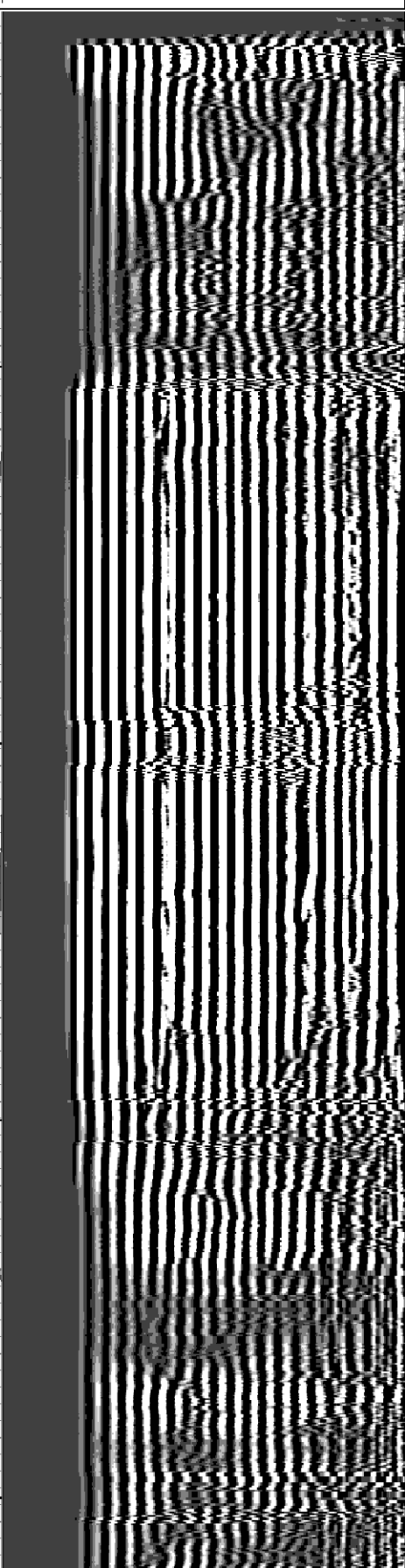
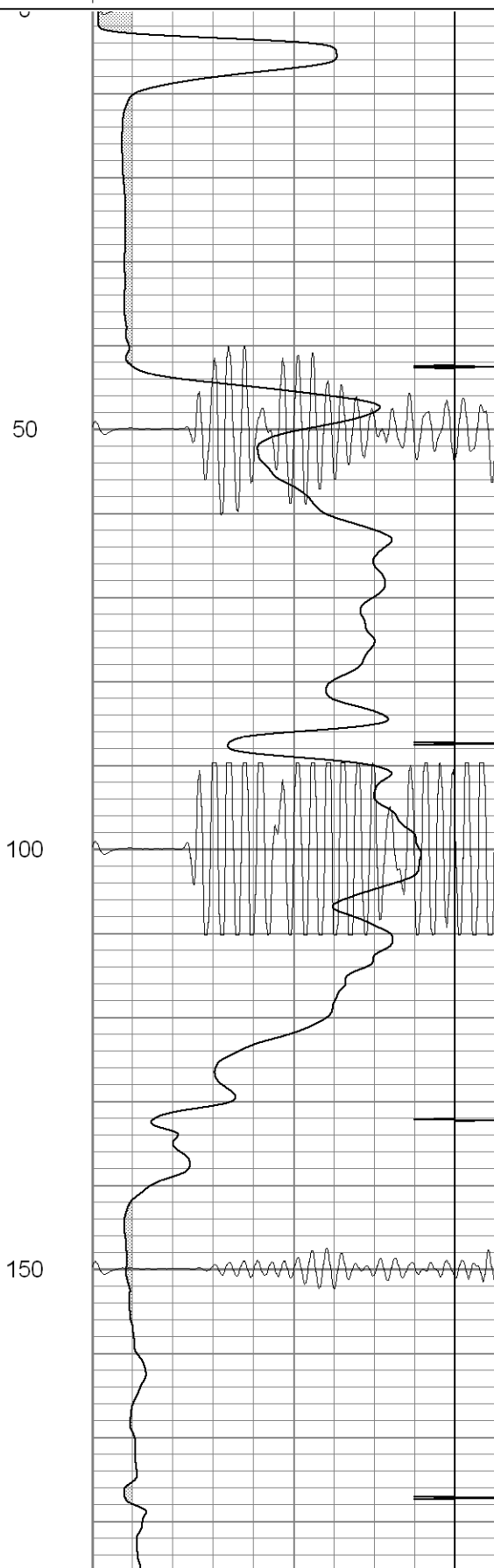
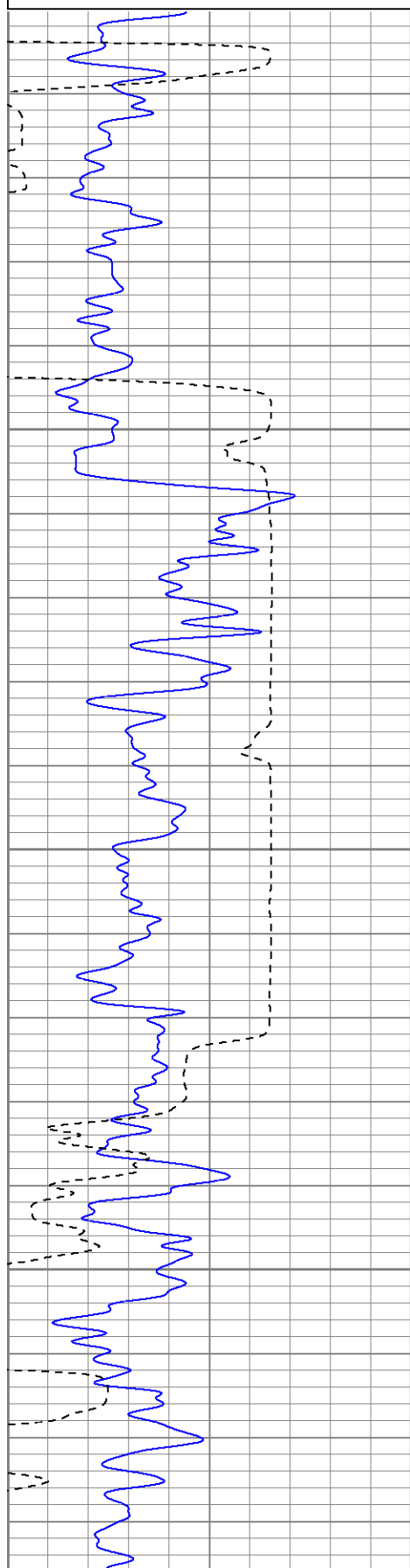
Main Pass

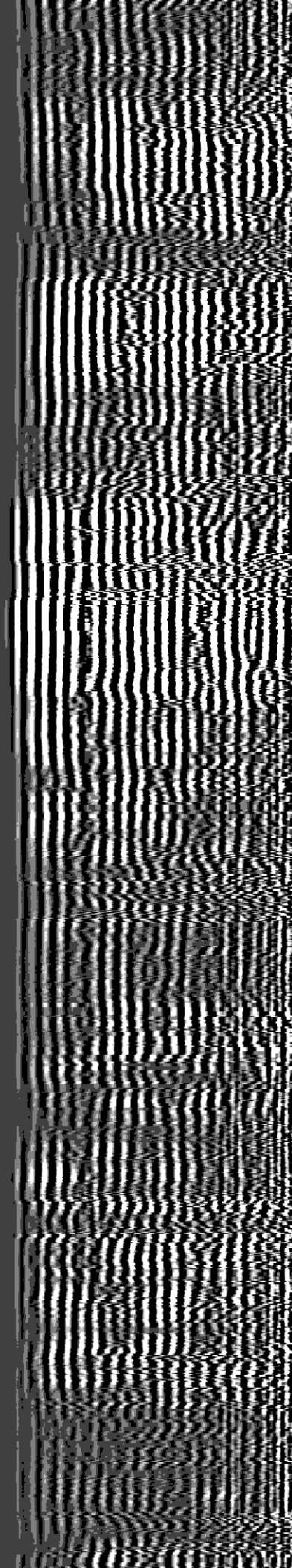
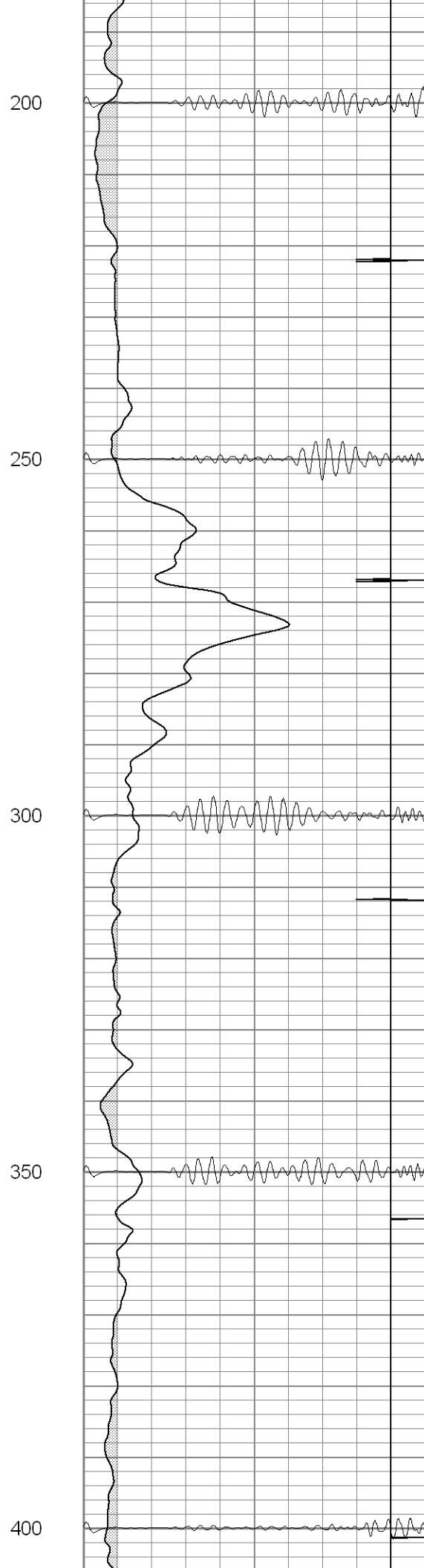
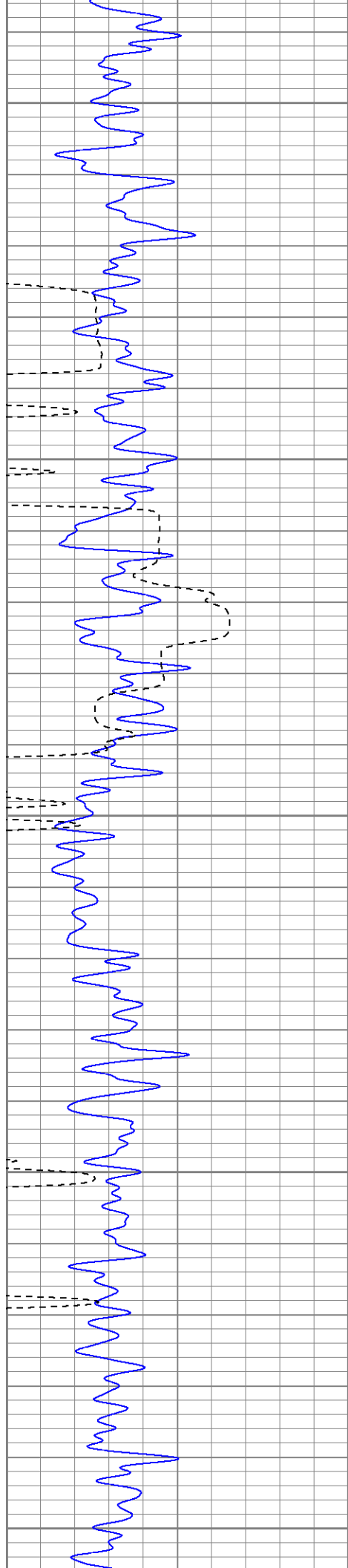
Database File: ge18-1561107cbl.db
Dataset Pathname: pass2.1
Presentation Format: cblrt
Dataset Creation: Tue Jun 12 08:10:19 2007 by Calc Open-Cased 061129
Charted by: Depth in Feet scaled 1:240

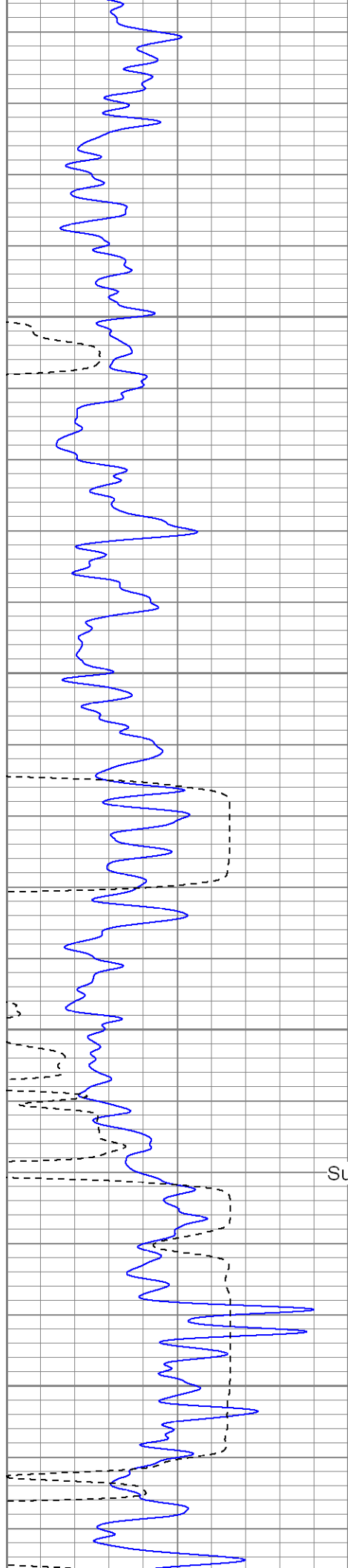
0	GR (GAPI)	200
400	TT3 (usec)	200

0	AMP3 (mV)	100
18	CCL	-2
100	CBL5	1200

200	Variable Density	1200
-----	------------------	------







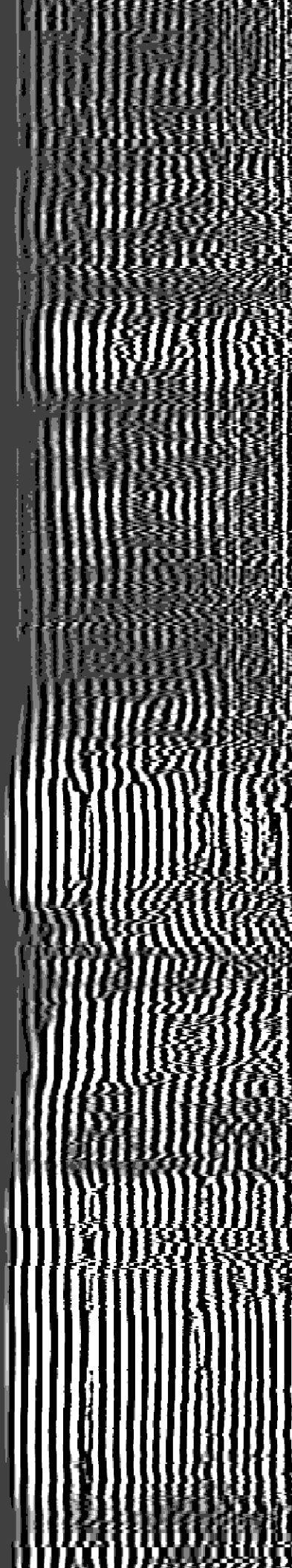
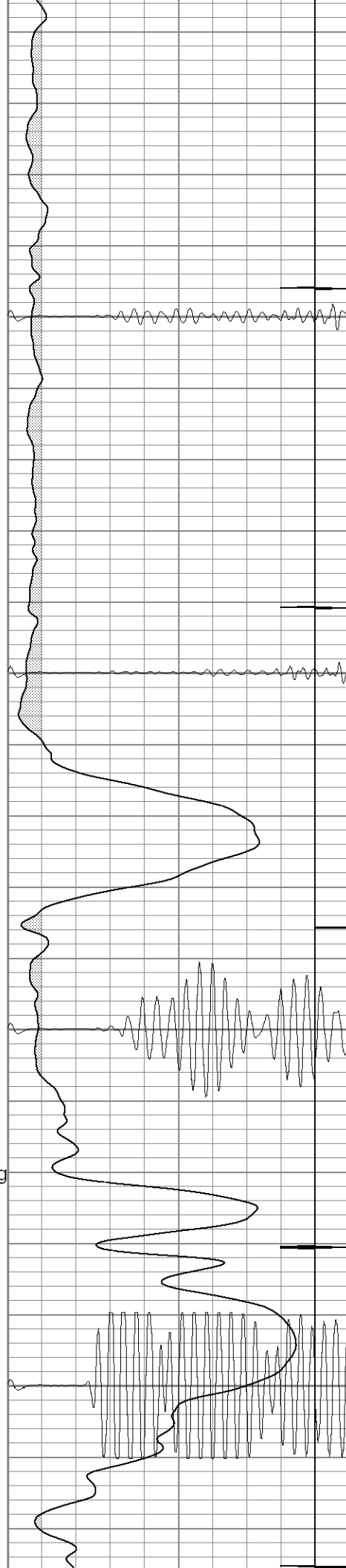
Surface Casing

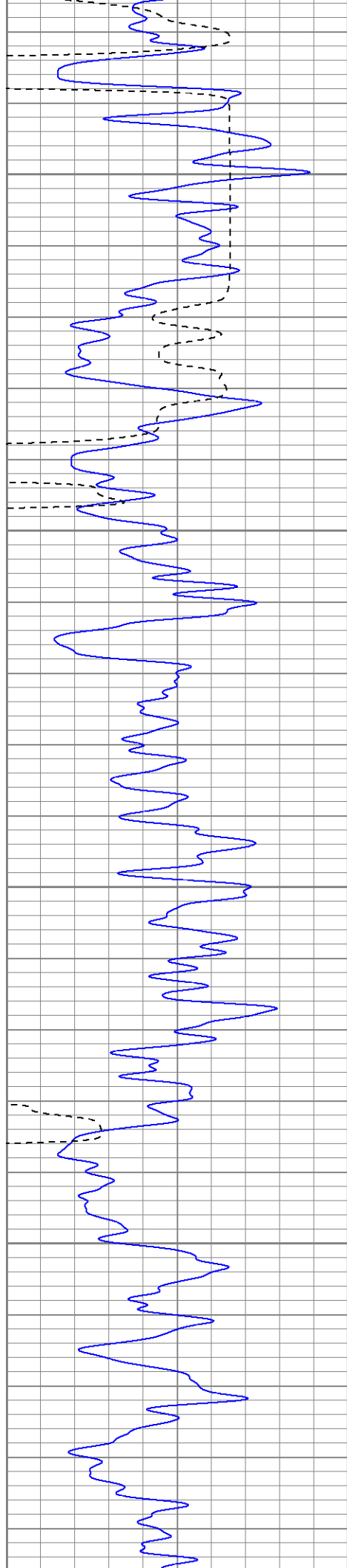
450

500

550

600



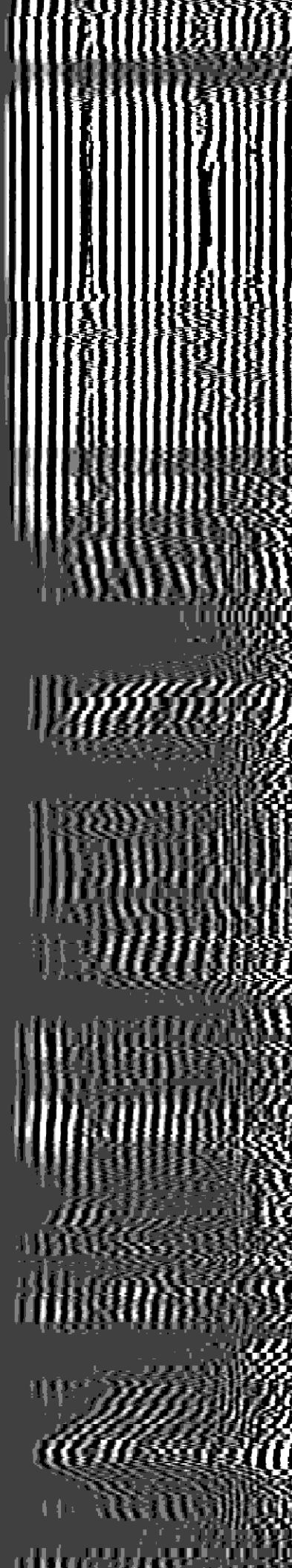
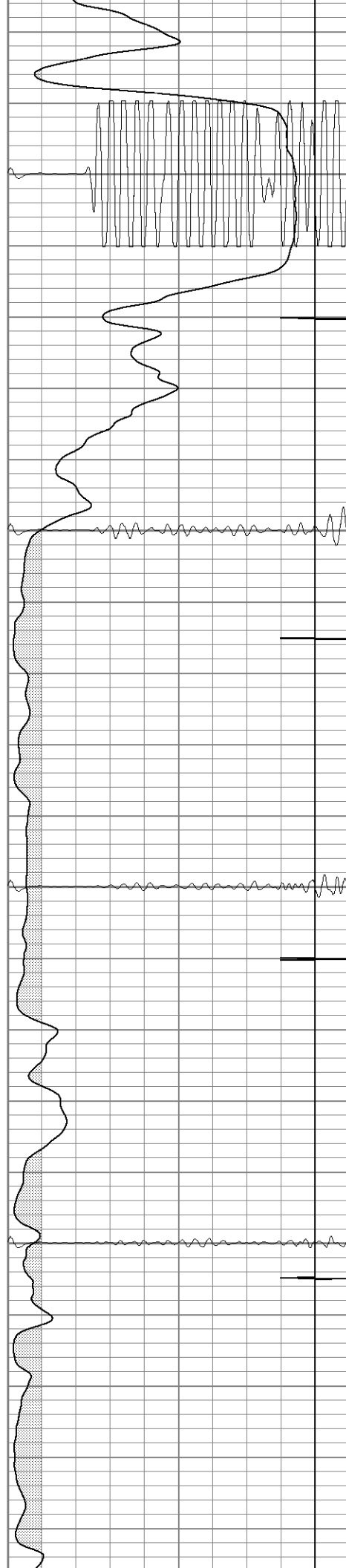


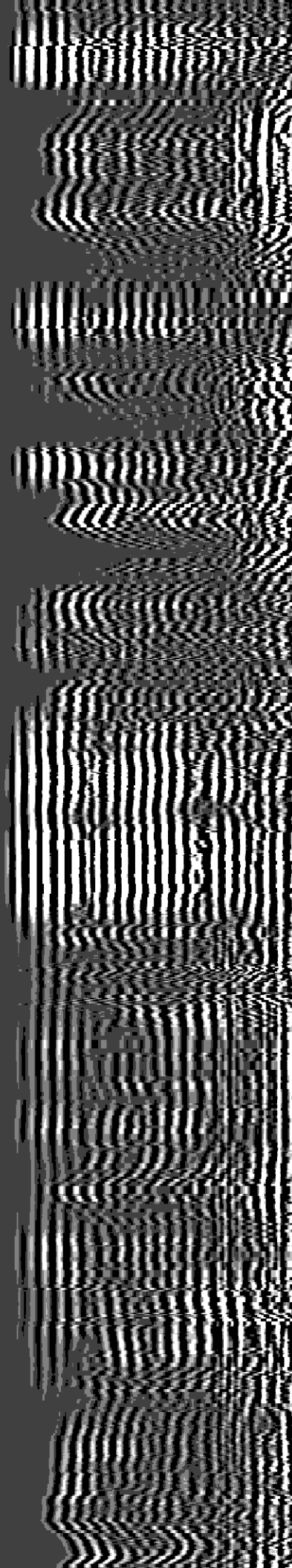
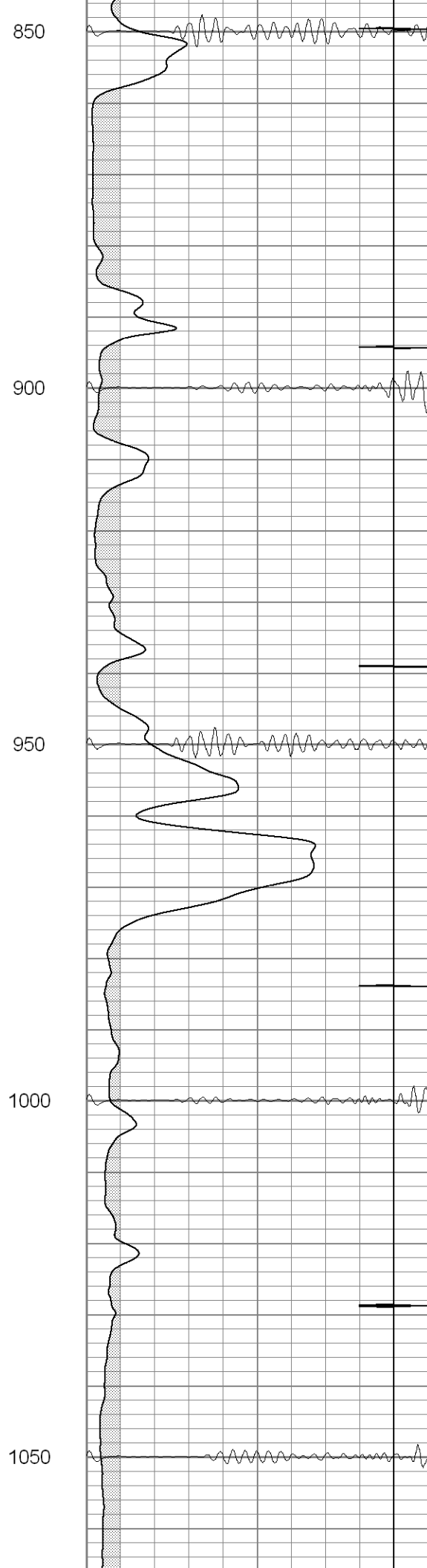
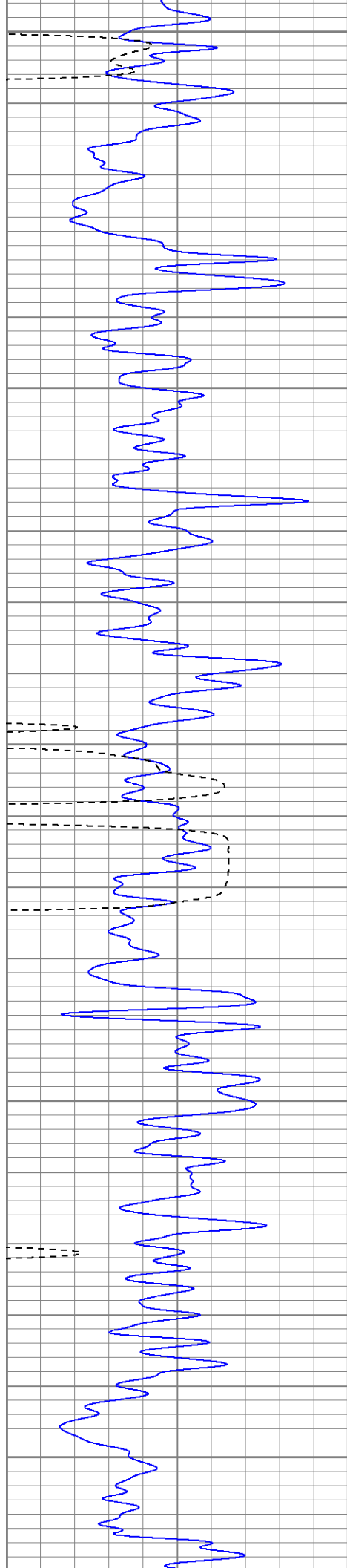
650

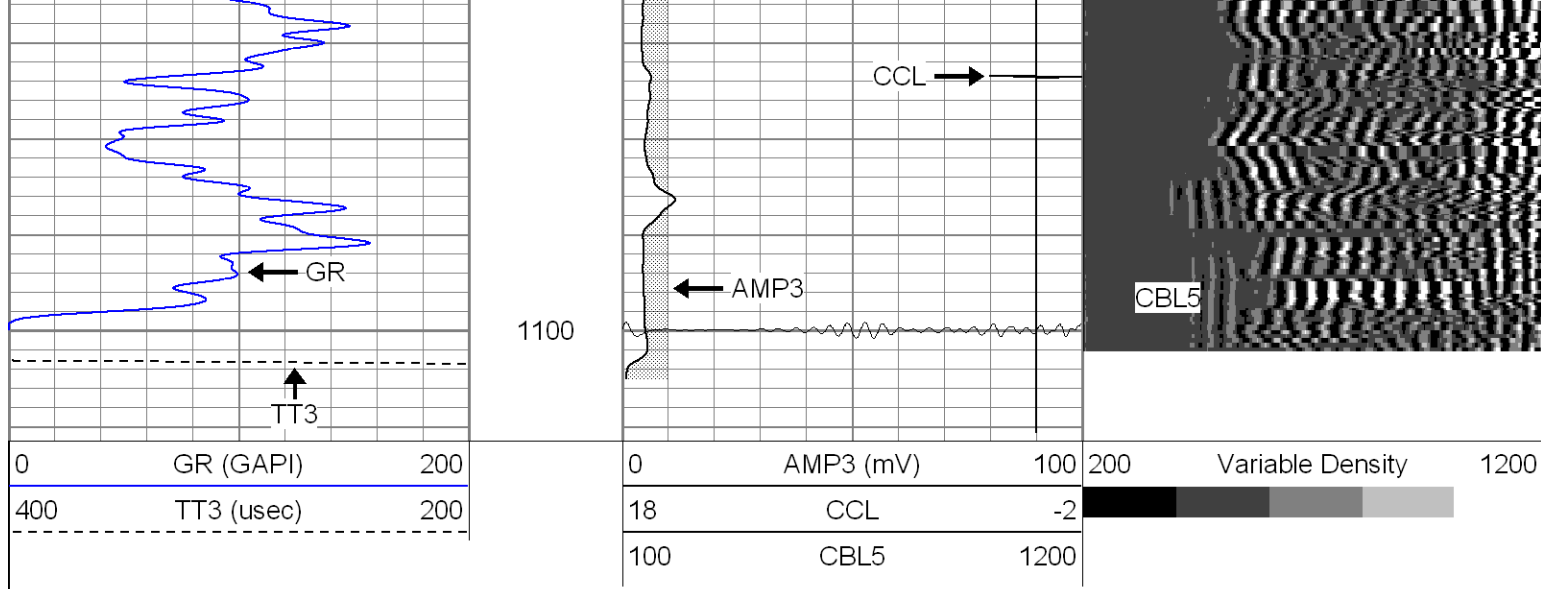
700

750

800





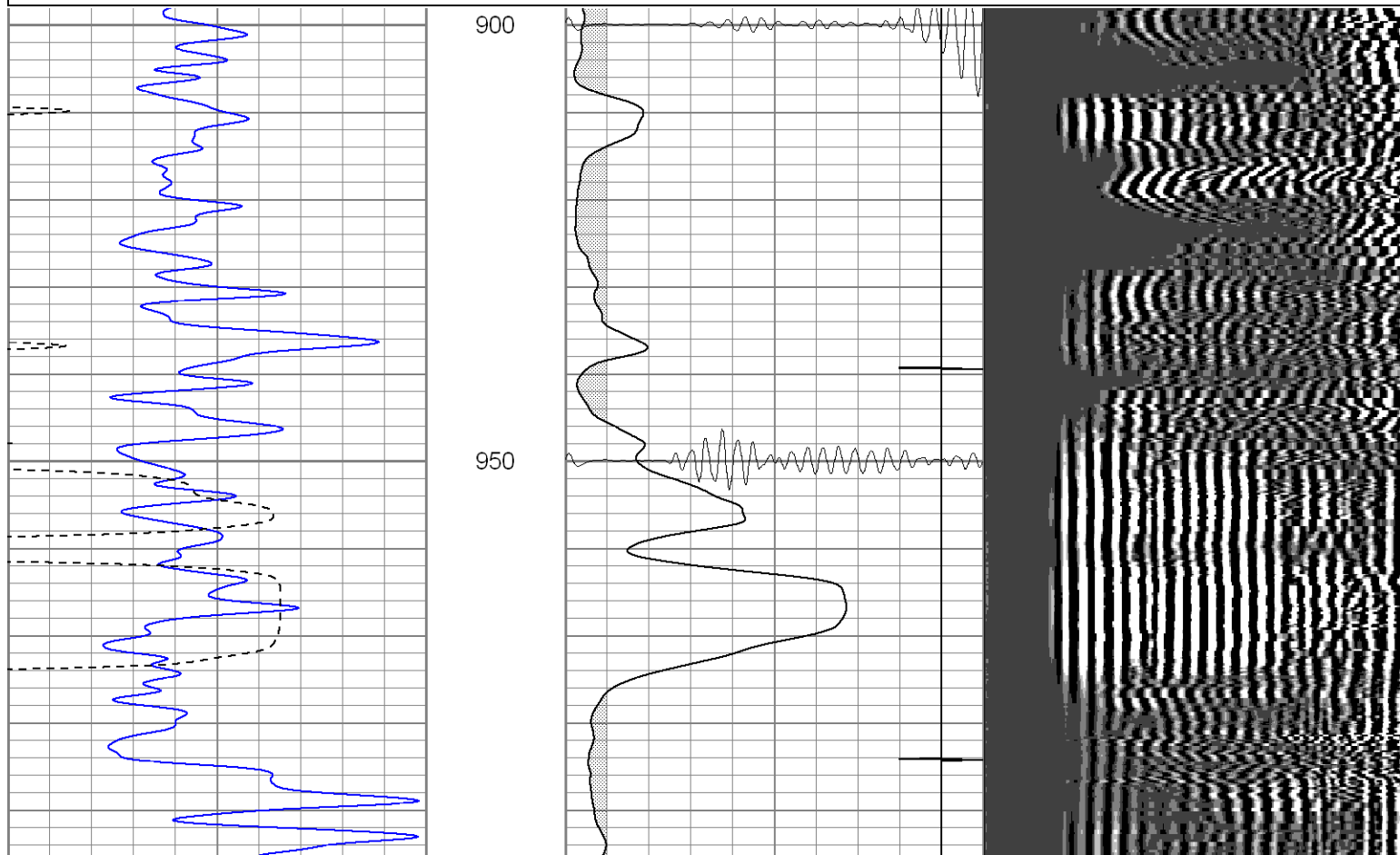
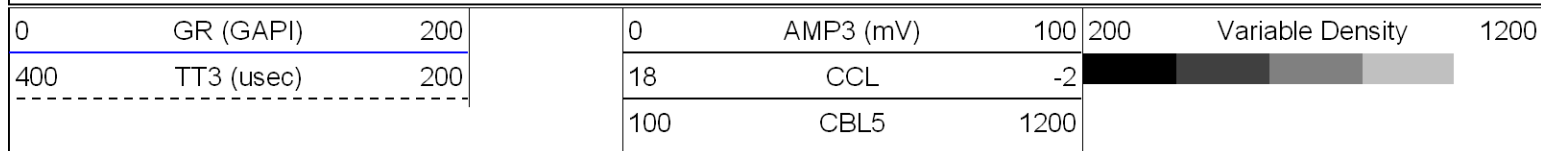


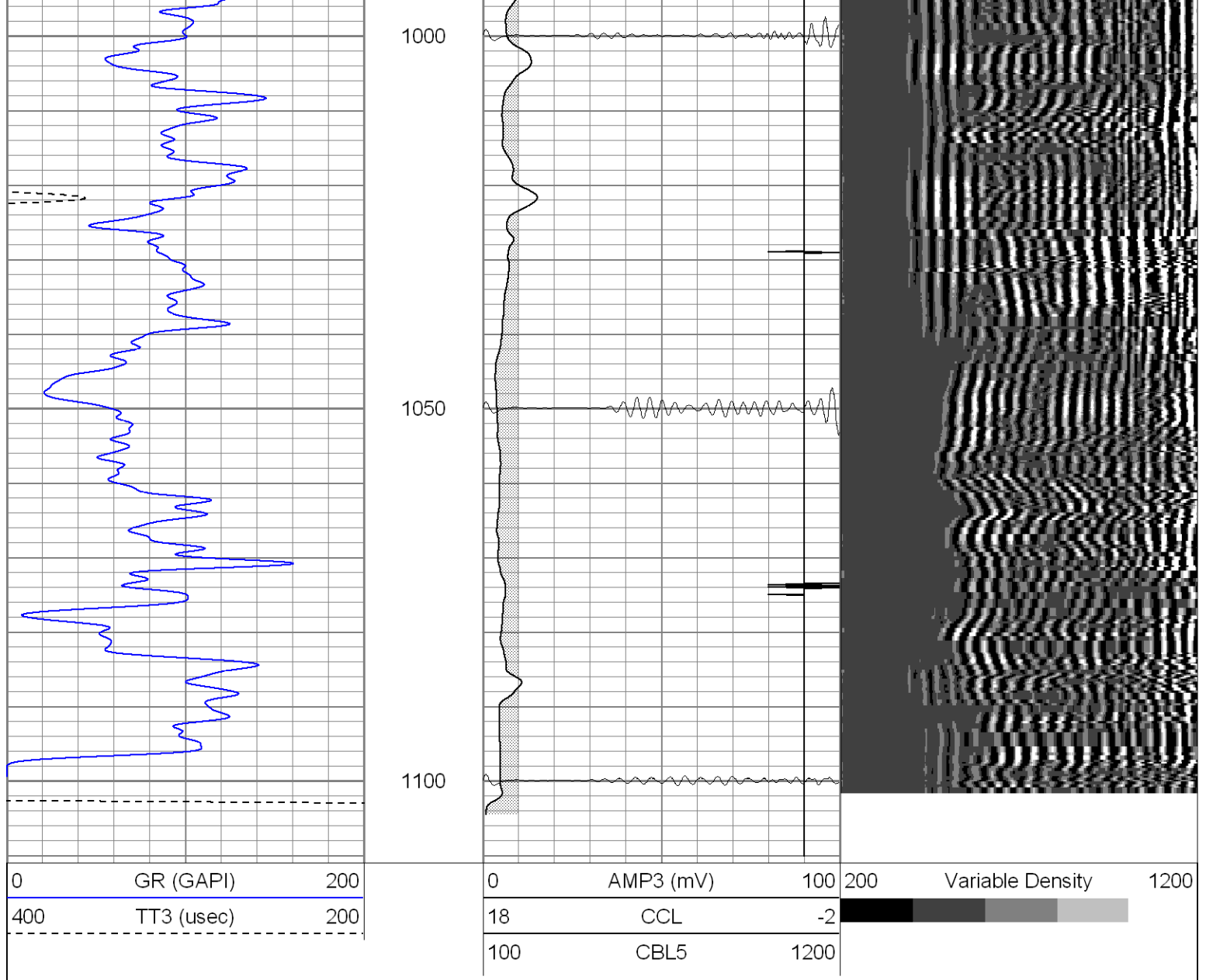
SUPERIOR

Black Lick, Pa.
Mercer, Pa.
Wooster, Oh.
Cleveland, Ok.
Trinidad, Co.

Repeat Pass

Database File: ge18-1561107cbl.db
 Dataset Pathname: pass1.1
 Presentation Format: cblrt
 Dataset Creation: Tue Jun 12 08:16:50 2007 by Calc Open-Cased 061129
 Charted by: Depth in Feet scaled 1:240





Calibration Report

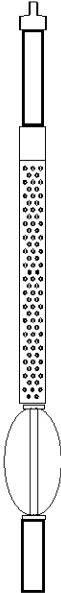
Database File: ge18-1561107cbl.db
 Dataset Pathname: pass1
 Dataset Creation: Mon Jun 11 13:57:43 2007 by Log Open-Cased 061129

Cement Bond Log Calibration Report

Serial Number:	Titan3		
Tool Model:	T3		
Performed:	Wed Oct 05 09:08:07 2005		
Depth:	0	ft	
Casing Diameter:	0	in	
	3' Spacing	5' Spacing	
Signal Zero:	1	1	mV
Calibrated Amplitude:	85	85	mV
Reading at Signal Zero:	0	0	V
Reading in Free Pipe:	1.96	2.03	V
Gain:	42.8571	41.3793	
Offset:	1	1	

Gamma Ray Calibration Report

Serial Number:	Titan3	
Tool Model:	T3	
Performed:	Wed Oct 05 09:22:01 2005	
Calibrator Value:	1.0	GAPI
Background Reading:	0.0	cps
Calibrator Reading:	1.0	cps
Sensitivity:	1.1000	GAPI/cps

Sensor	Offset (ft)	Schematic	Description	Len (ft)	OD (in)	Wt (lb)	
GR	13.40		None	0.75	1.50	5.00	
			GR-T3 (Titan3) Titan3	2.52	2.44	25.00	
WVF5	9.24		CBL-T3 (Titan3) Titan3	7.23	2.44	110.00	
WVF3	8.24						
CCL	0.70		X	3.00	1.69	25.00	
			CCL-T2 (Titan2) Short	1.91	2.75	15.00	
		Dataset:	ge18-1561107cbl.db: field/well/run1/pass2				
		Total Length:	15.41 ft				
		Total Weight:	180.00 lb				
		O.D.	2.75 in				