

Patterson

**CEMENT BOND
GAMMA RAY
LOG**

Company		XTO Energy, Inc.	
Well		Apache Canyon 13-12X	
Field		Purgatoire River	
County		Las Animas	
State		CO	
Company		XTO Energy, Inc.	
Well		Apache Canyon 13-12X	
Field		Purgatoire River	
County		Las Animas	
State		CO	
Location:		API # : 05 071 08828 00	
SEC 13 TWP 34S RGE 68W		2264' FSL & 627' FWL	
Permanent Datum		Ground Level	
Log Measured From		Ground Level	
Drilling Measured From		Ground Level	
Elevation		8394'	
Other Services		Pressure Control	
K.B. -----		Elevation	
D.F. -----		8394'	
G.L. 8394'			
Date		8-22-06	
Run Number		One	
Depth Driller		2400'	
Depth Logger		2331'	
Bottom Logged Interval		2329'	
Top Log Interval		Surface	
Open Hole Size		7 7/8"	
Type Fluid		Water	
Density / Viscosity		///	
Max. Recorded Temp.		110F	
Estimated Cement Top		1984'	
Time Well Ready		Portable Mast	
Time Logger on Bottom		8:20AM	
Equipment Number		1875	
Location		Trinidad	
Recorded By		E. Ray	
Witnessed By		Mr. Terry Maxwell	
Run Number		Borehole Record	
Bit		From	
To		Size	
Weight		From	
To		Tubing Record	
Casing Record		Size	
Surface String		8 5/8"	
Prot. String		Wgt/Ft	
Production String		Top	
Liner		5 1/2"	
		00	
		Bottom	
		216'	
		N/A	

<<< Fold Here >>>

All interpretations are opinions based on inferences from electrical or other measurements and we cannot and do not guarantee the accuracy or correctness of any interpretation, and we shall not, except in the case of gross or willful negligence on our part, be liable or responsible for any loss, costs, damages, or expenses incurred or sustained by anyone resulting from any interpretation made by any of our officers, agents or employees. These interpretations are also subject to our general terms and conditions set out in our current Price Schedule.

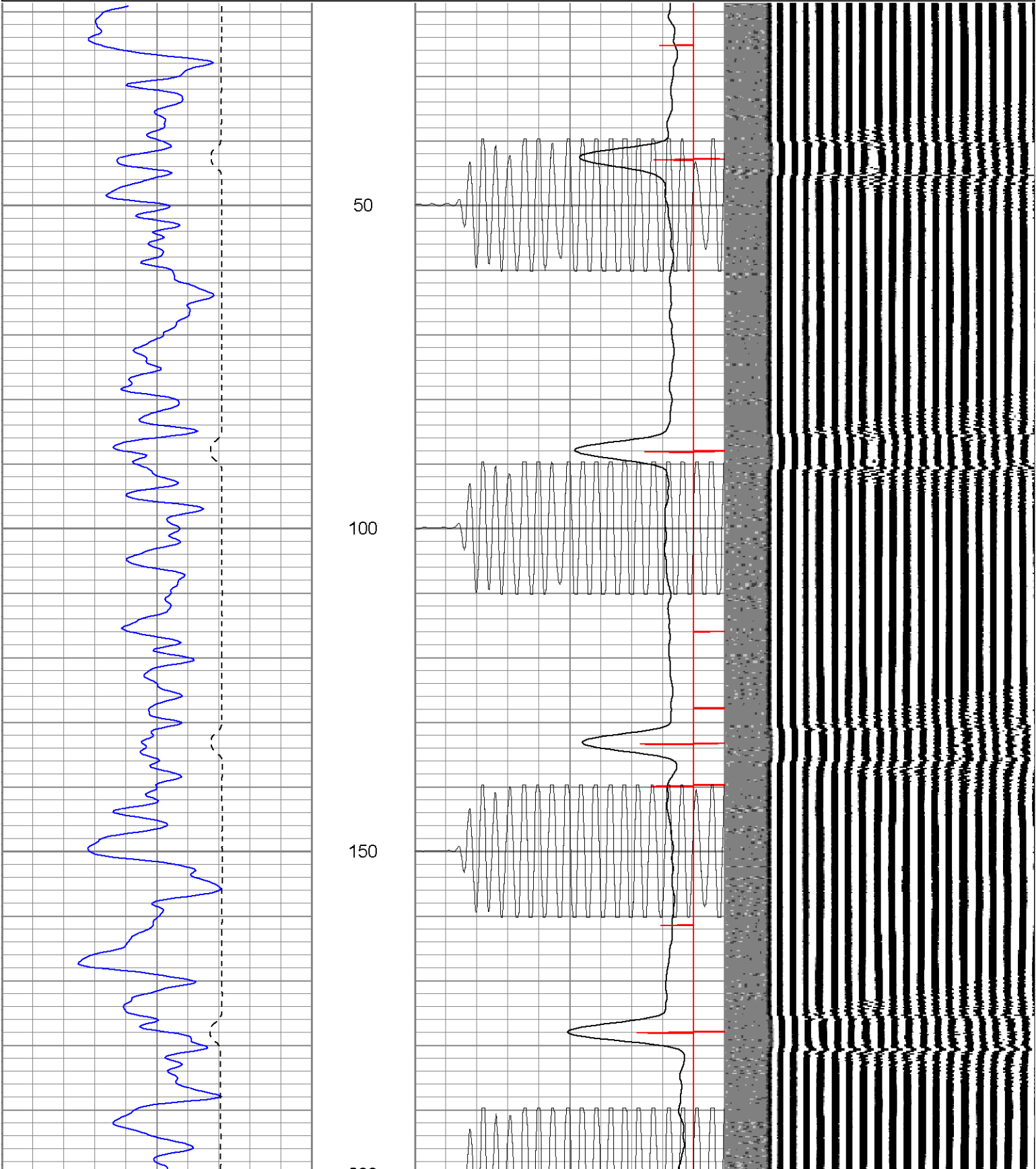
Comments

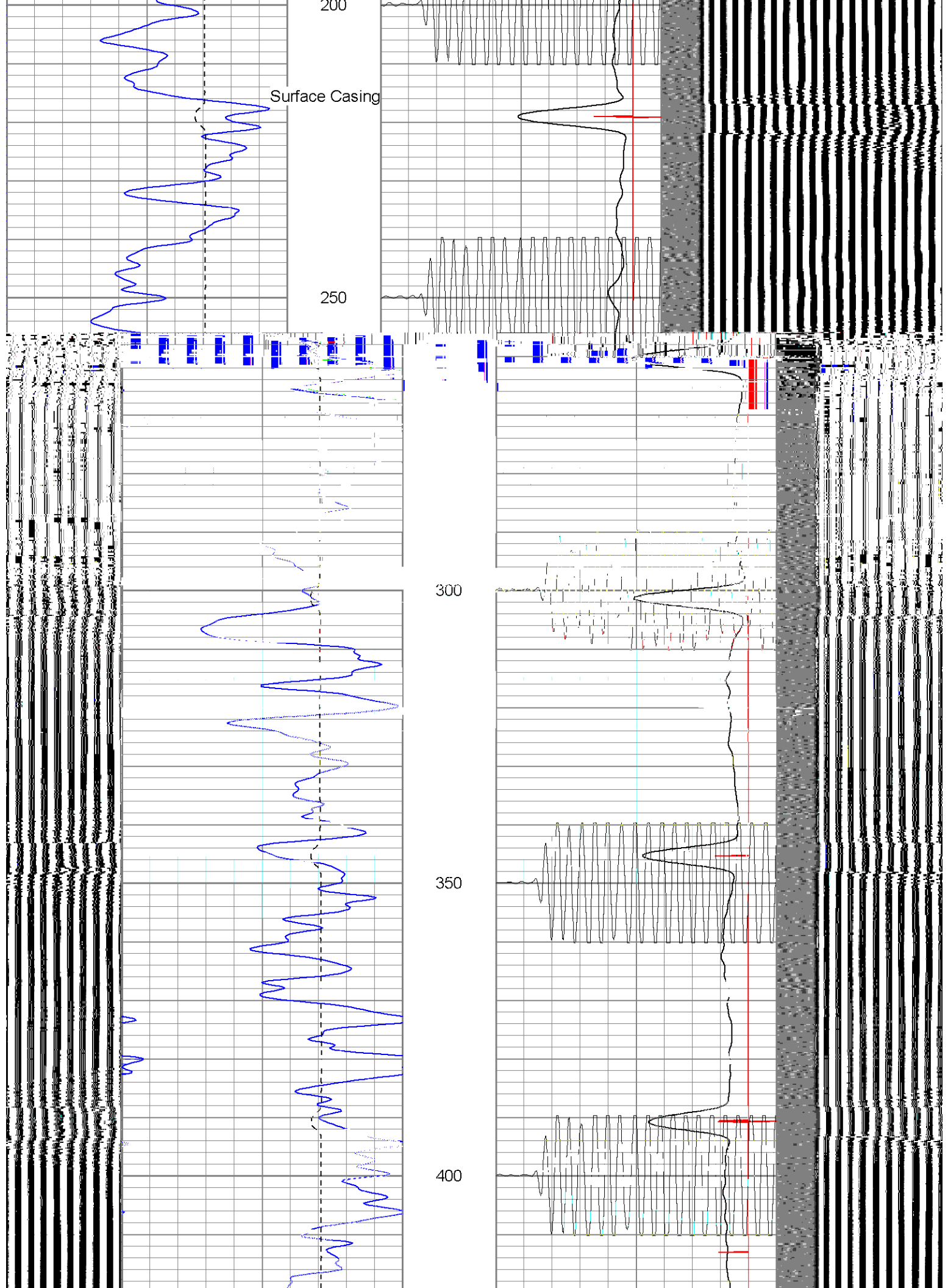
Turn @ Bosque before Weston, Right on Big Bingham, First Left thru Double Green Gates, Stay on Main Road, Second Drive thru Location. (1st well on pad)

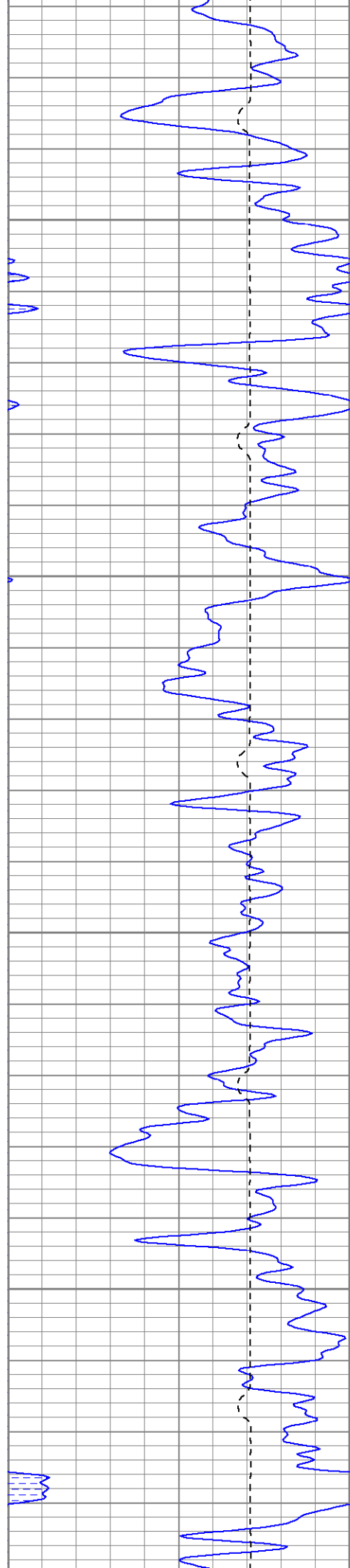
1000 PSI on Main Pass
0 PSI on Repeat Section

Database File: ac1312x82206b.db
Dataset Pathname: pass3.94
Presentation Format: cblrt
Dataset Creation: Tue Aug 22 13:48:57 2006 by Calc Open-Cased 060407
Charted by: Depth in Feet scaled 1:240

0	GR (GAPI)	200	0	AMP3 (mV)	100	200	Variable Density	1200
200	GR (GAPI)	400	18	CCL	-2			
400	TT3 (usec)	200	200	CBL5	1200			





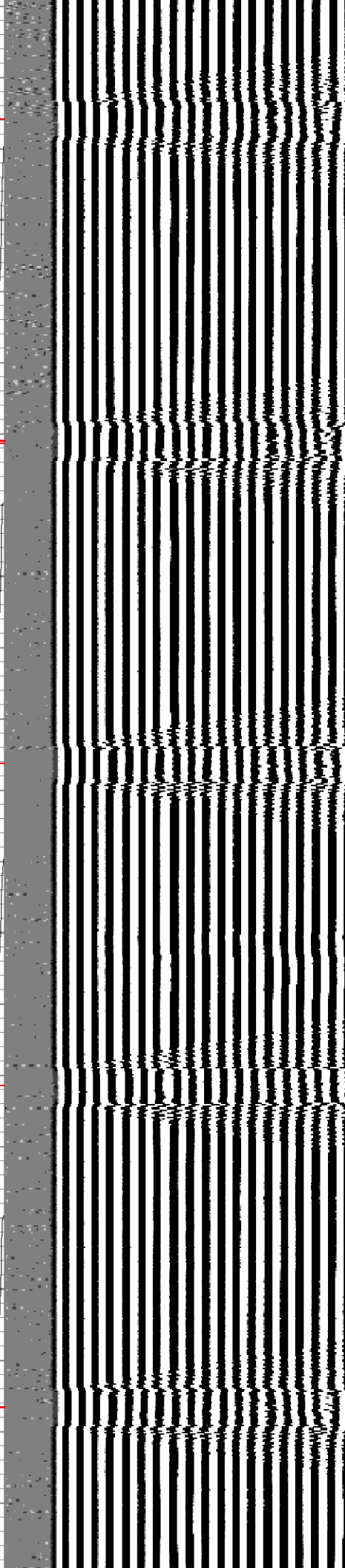
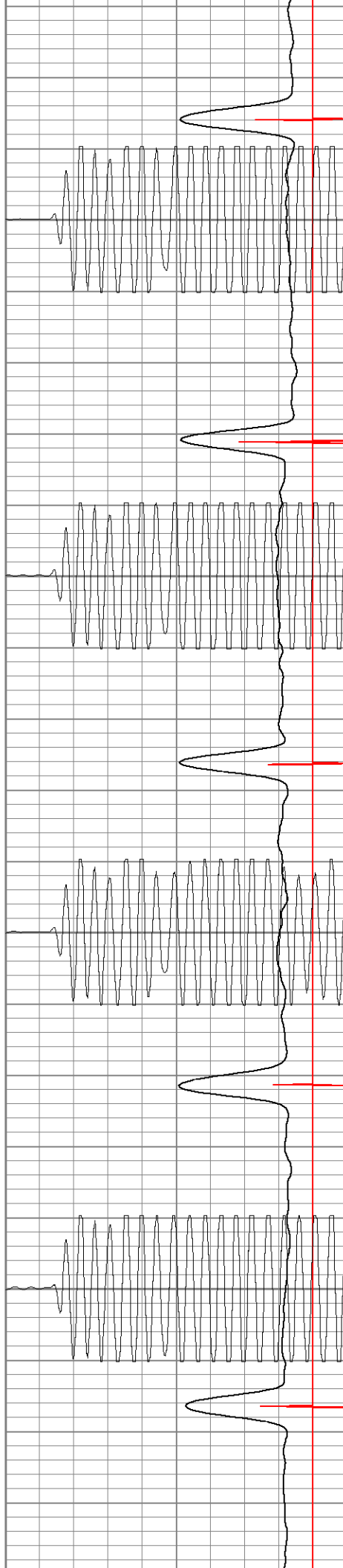


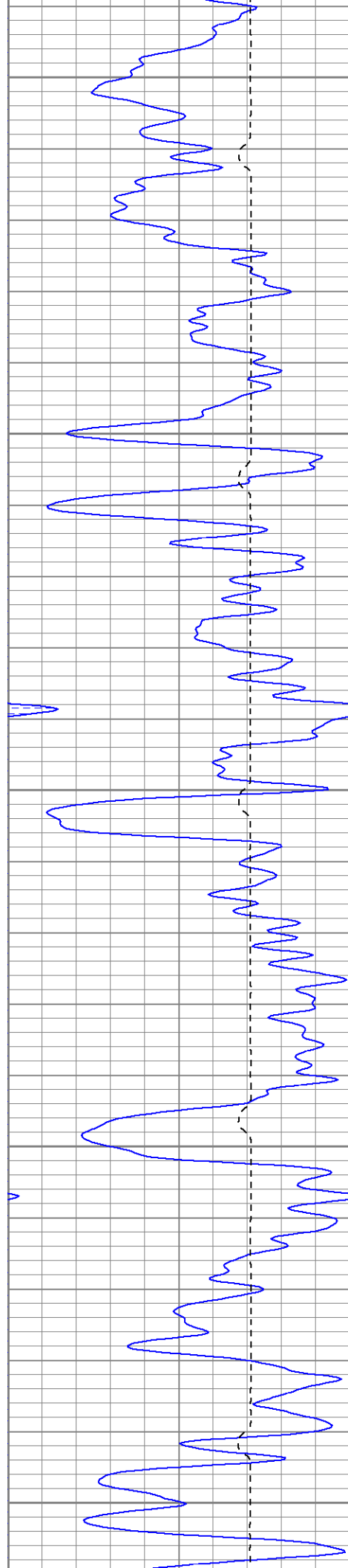
450

500

550

600





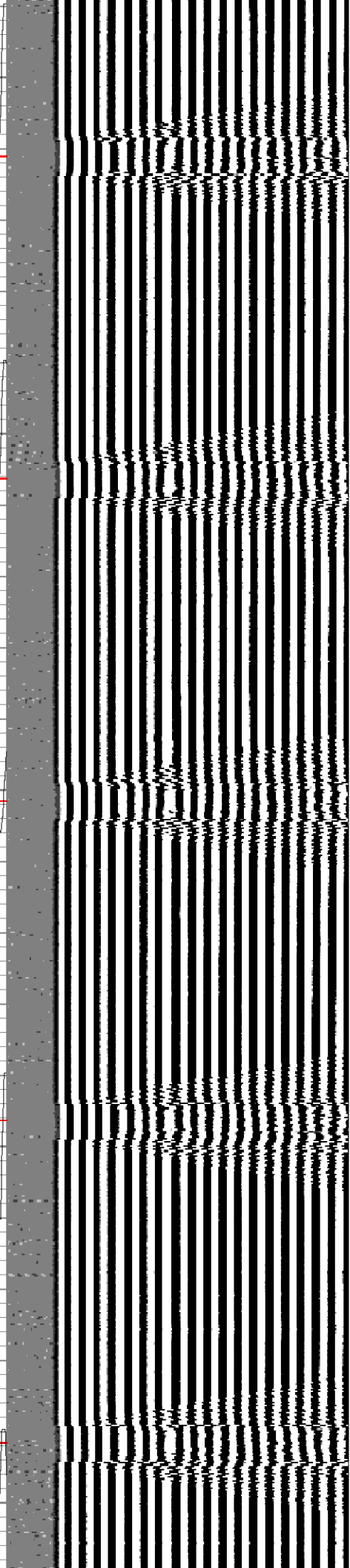
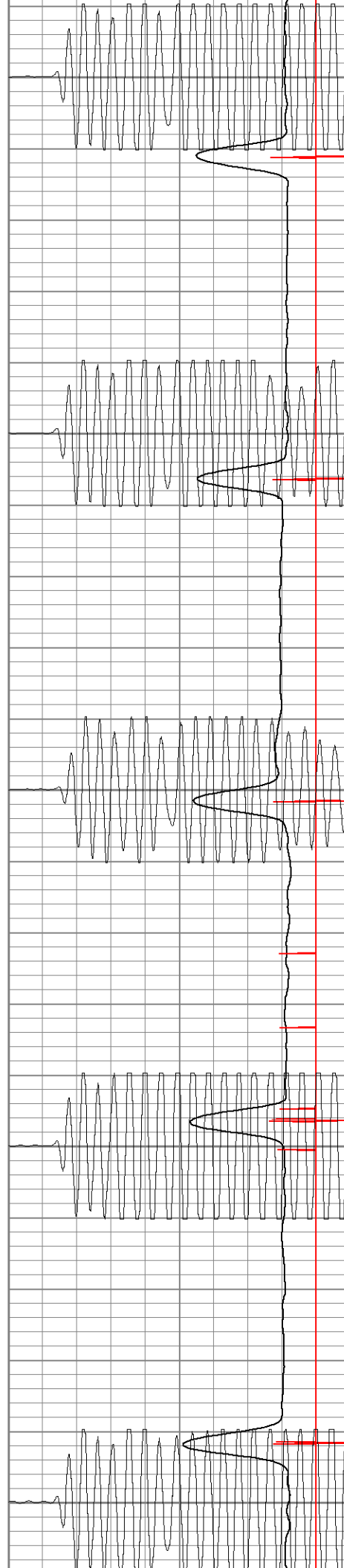
650

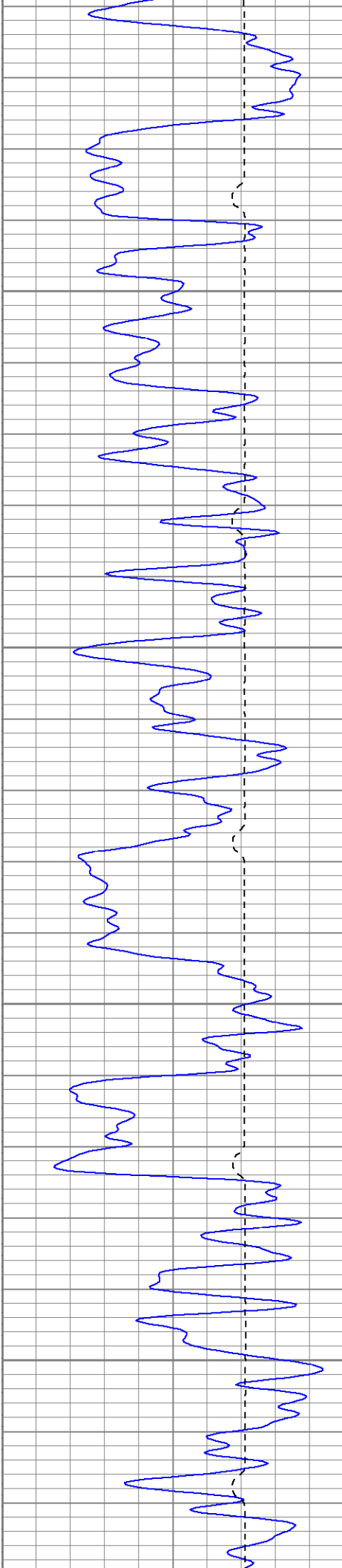
700

750

800

850



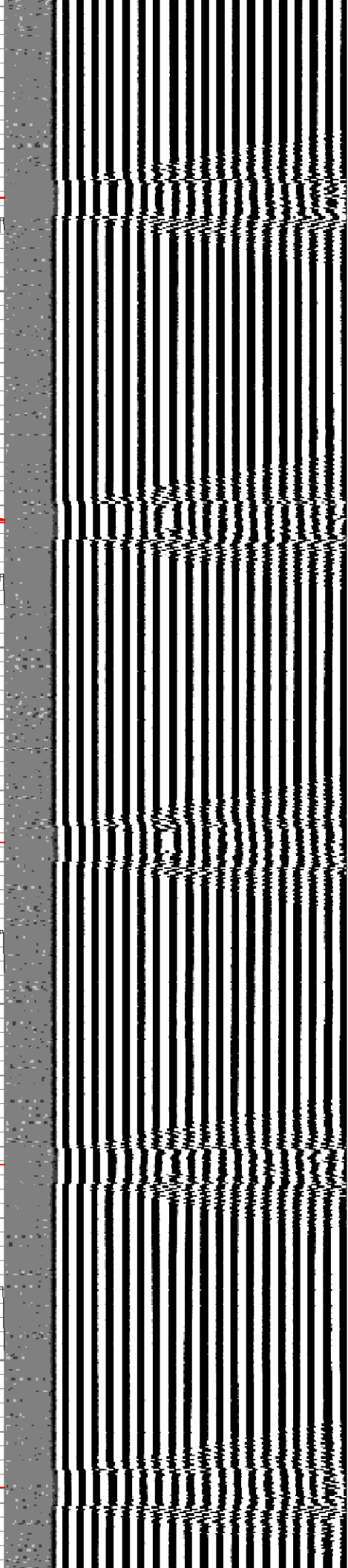
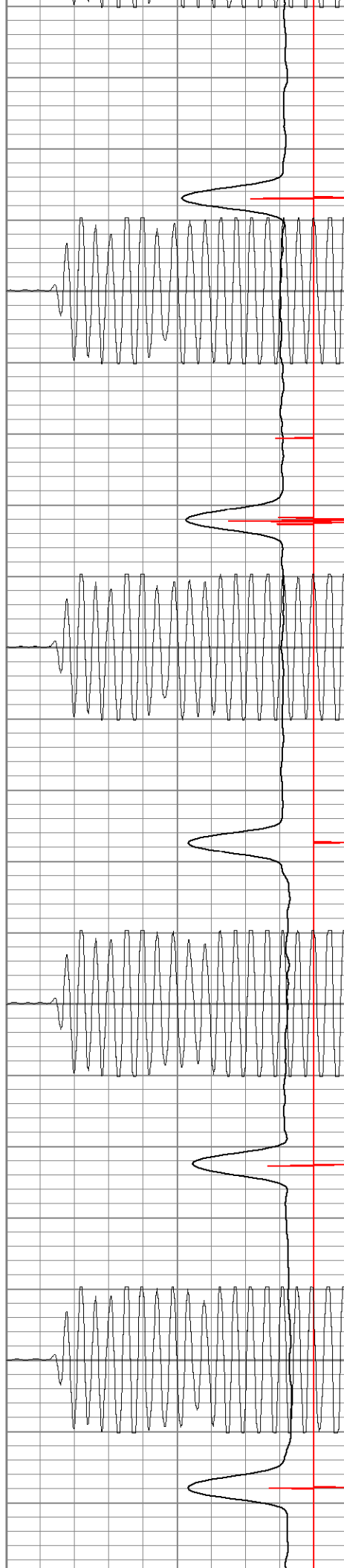


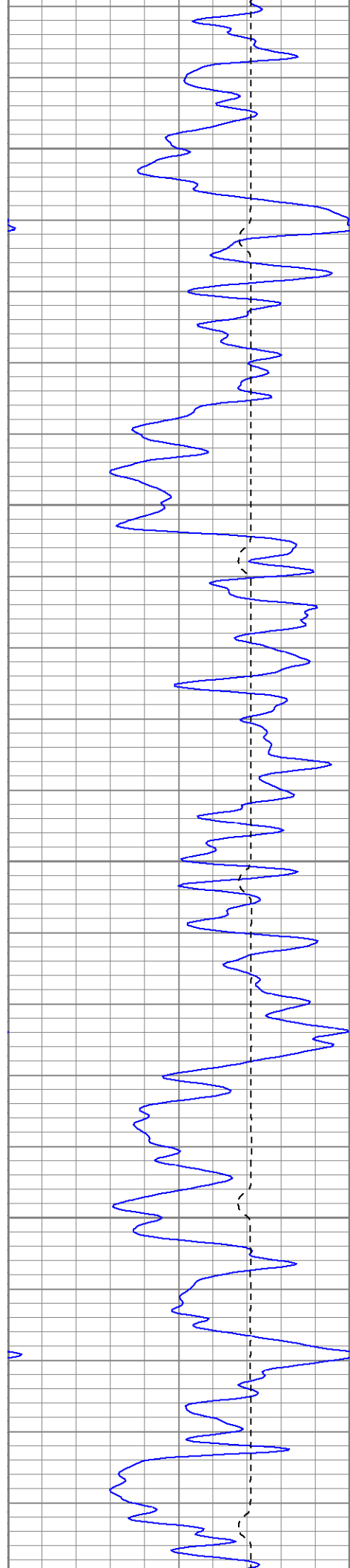
900

950

1000

1050





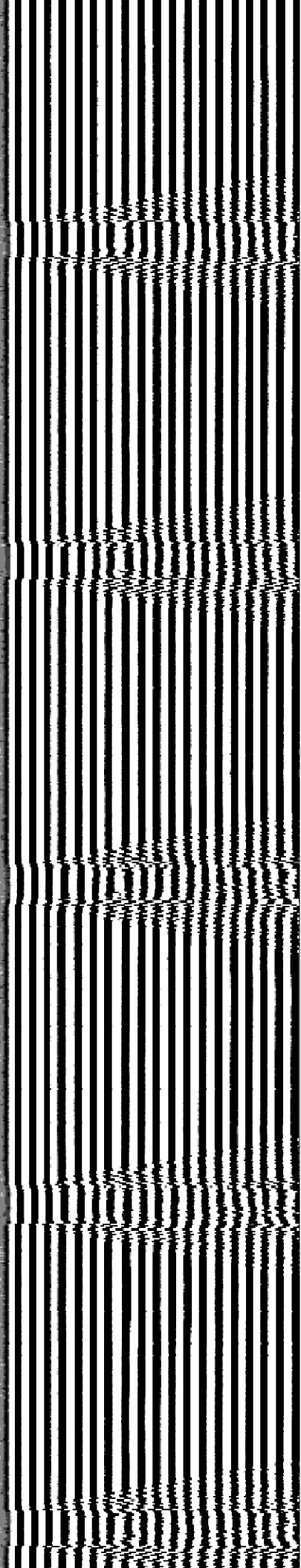
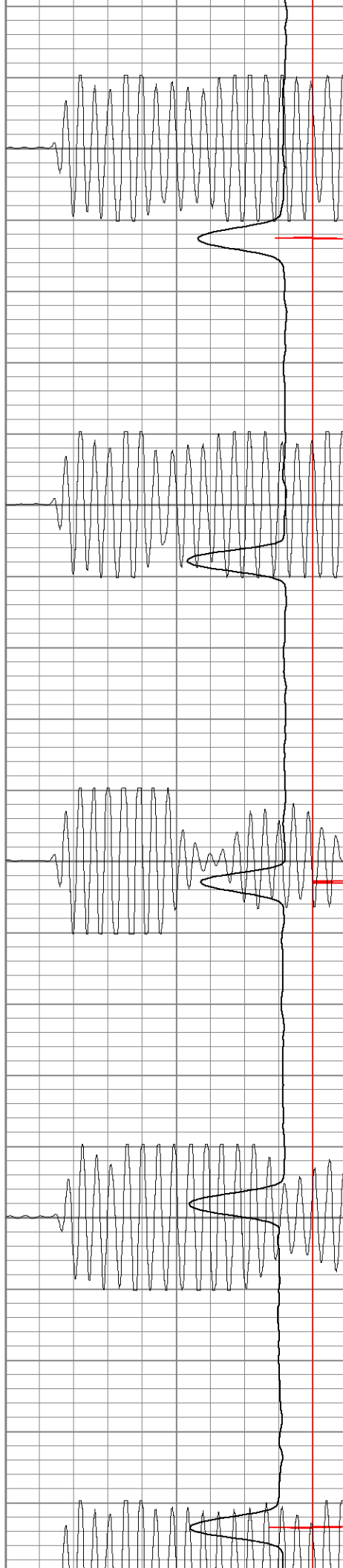
1100

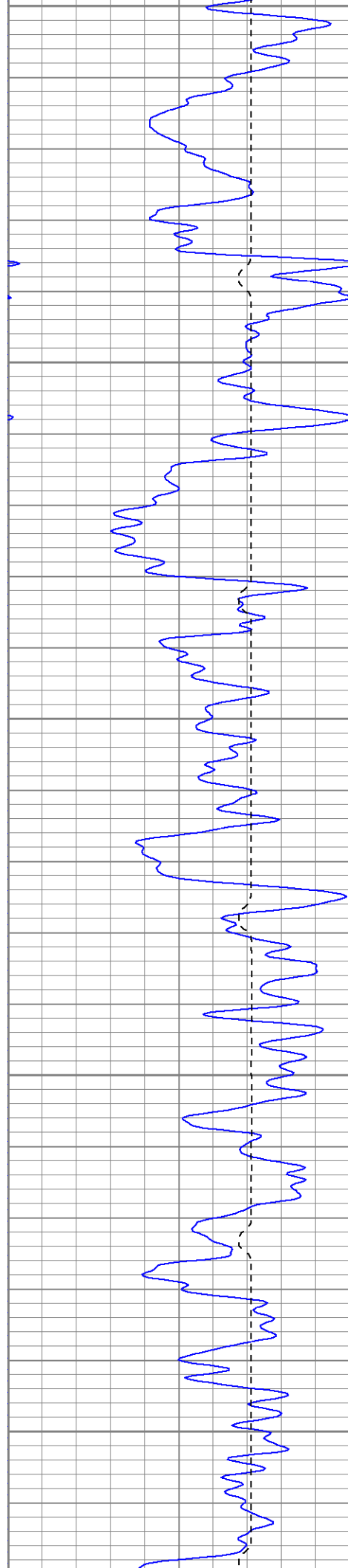
1150

1200

1250

1300





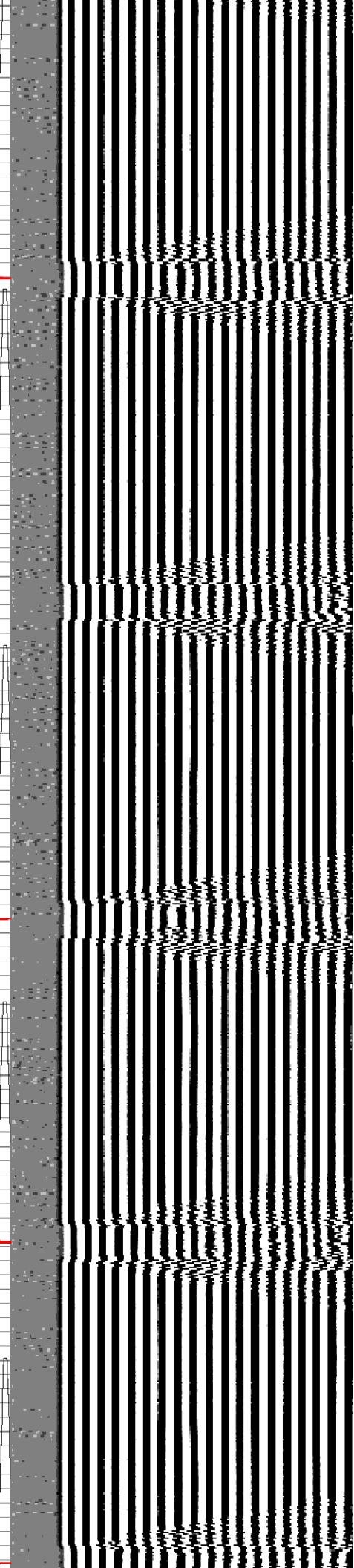
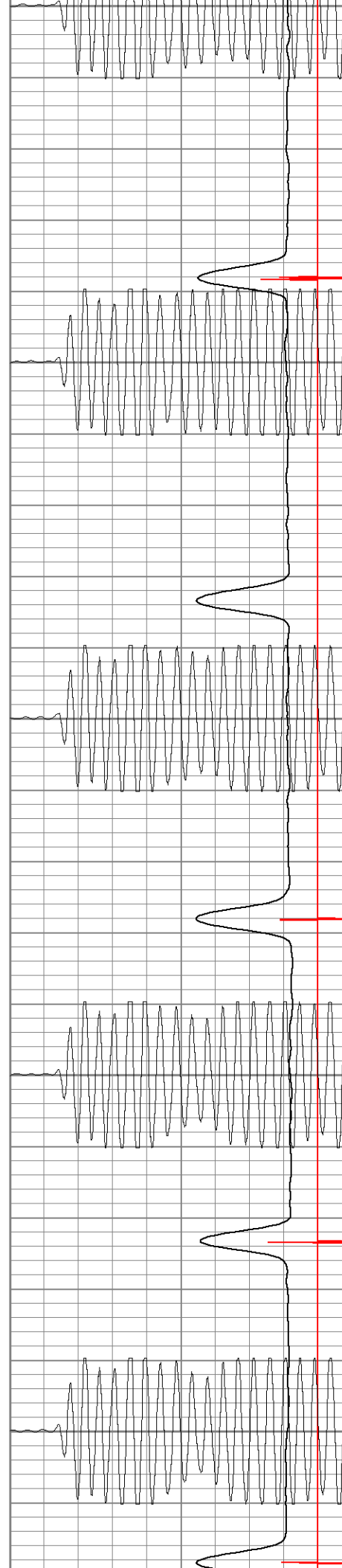
1300

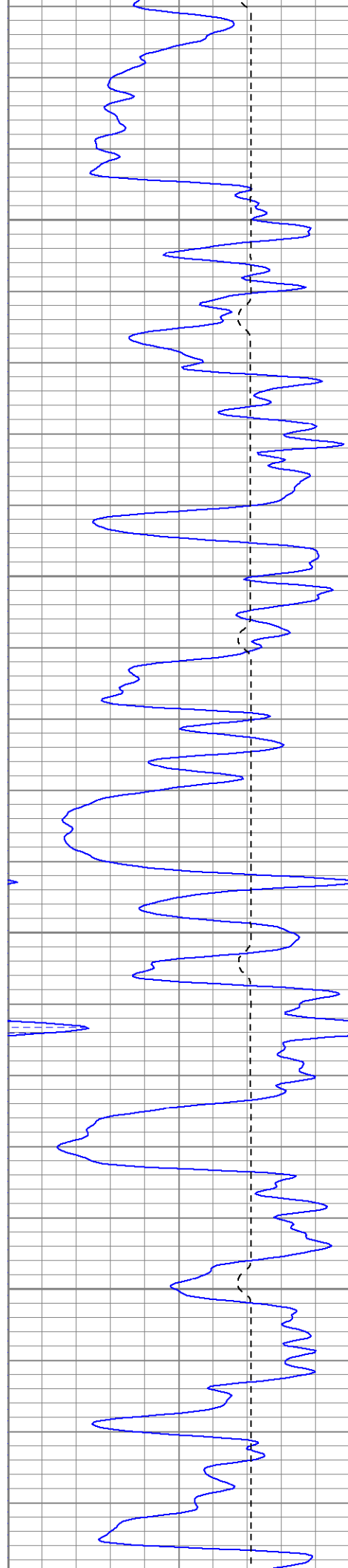
1350

1400

1450

1500



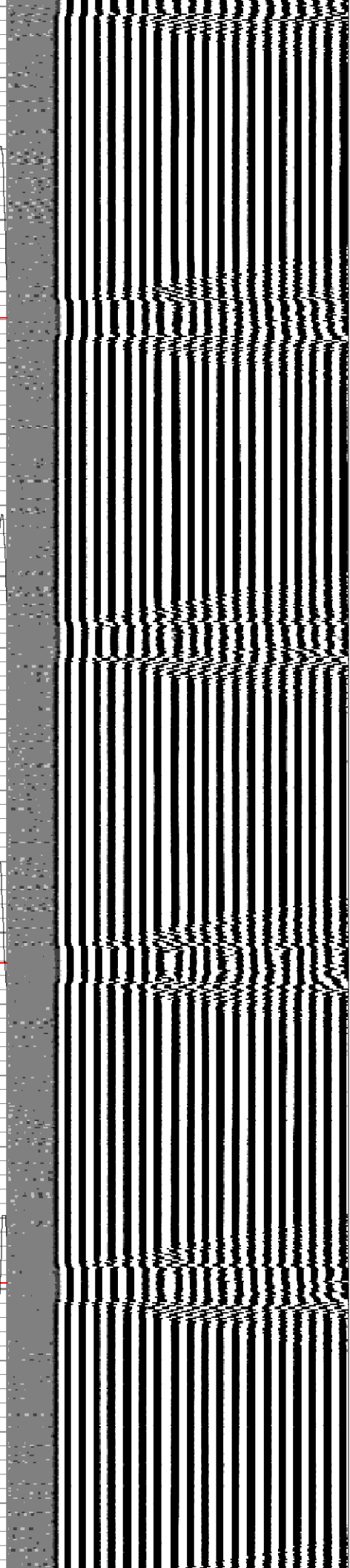


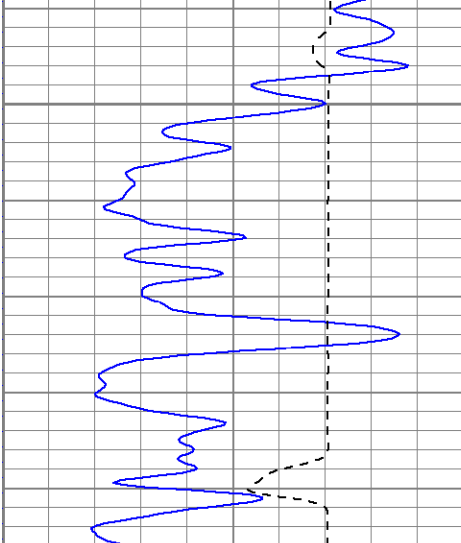
1550

1600

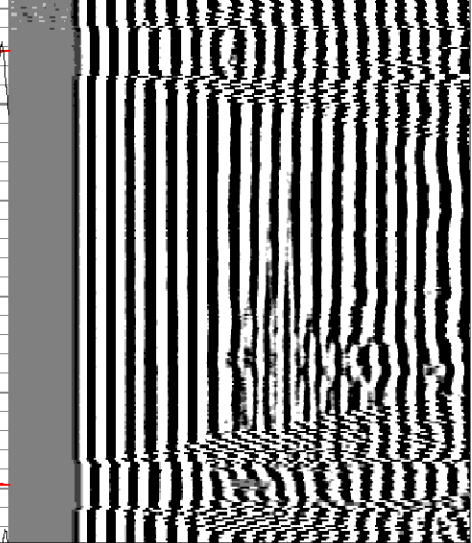
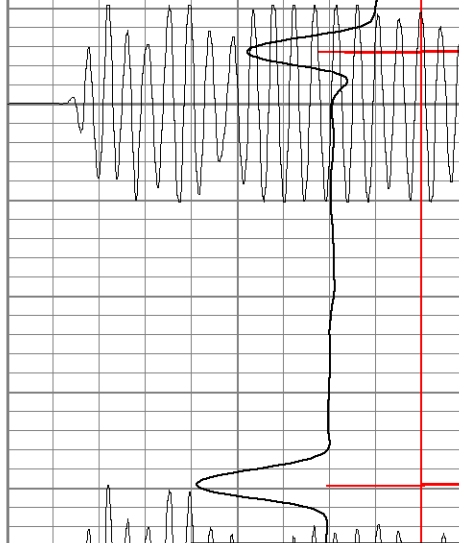
1650

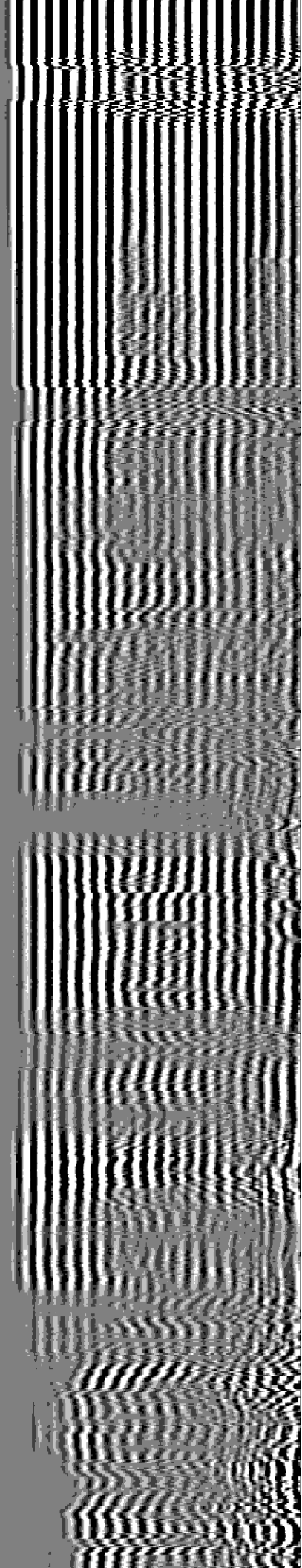
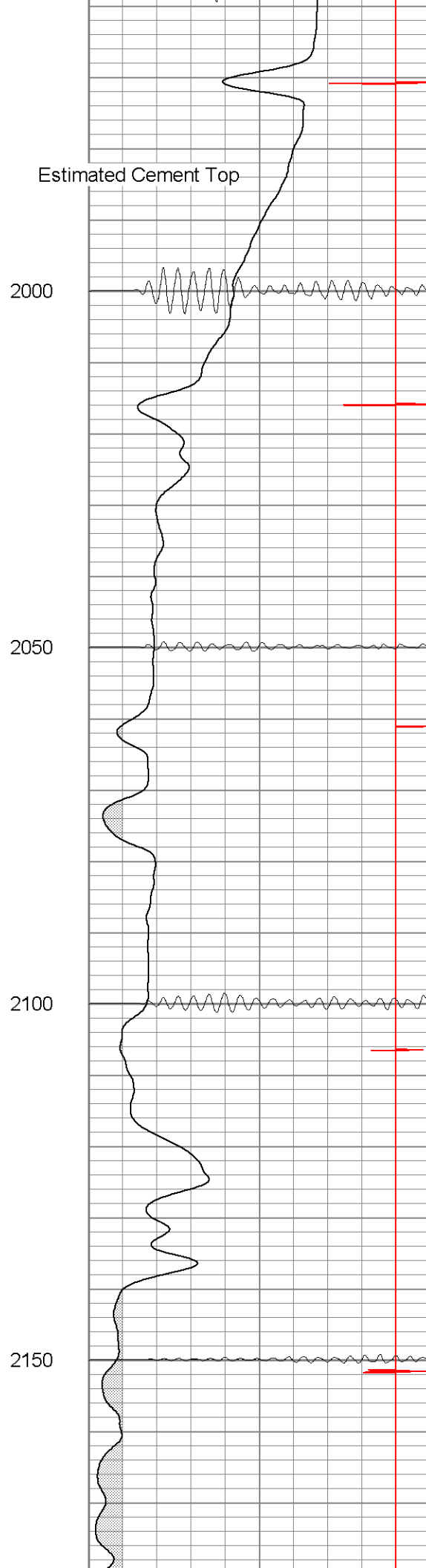
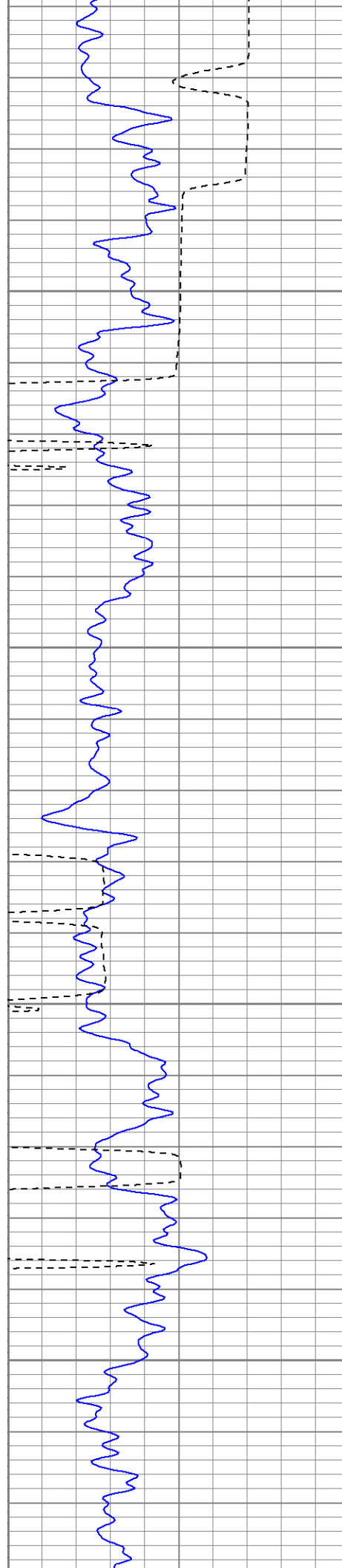
1700

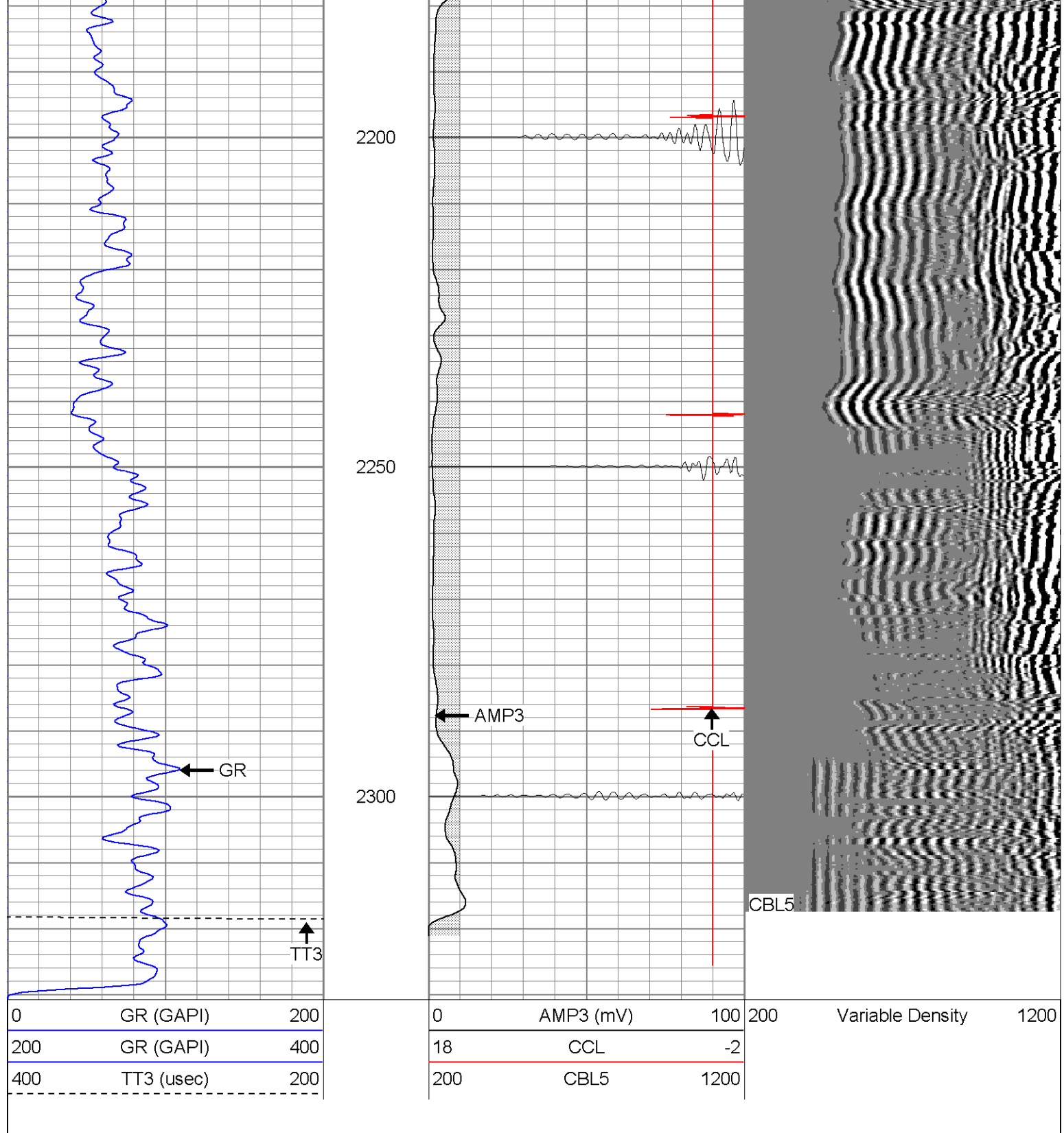




1750







Patterson

Repeat Section (0 PSI)

Database File: ac1312x82206b.db
Dataset Pathname: pass2.103
Presentation Format: cblrt
Dataset Creation: Tue Aug 22 14:02:50 2006 by Calc Open-Cased 060407
Charted by: Depth in Feet scaled 1:240



0	GR (GAPI)	200	0	AMP3 (mV)	100	200	Variable Density	1200
200	GR (GAPI)	400	18	CCL	-2			
400	TT3 (usec)	200	200	CBL5	1200			

Calibration Report				
Database File:	ac1312x82206b.db			
Dataset Pathname:	pass1			
Dataset Creation:	Tue Aug 22 08:15:34 2006 by Log Open-Cased 060407			
Gamma Ray Calibration Report				
Serial Number:	SlimHole			
Tool Model:	TitanSH			
Performed:	Thu Aug 17 15:36:54 2006			
Calibrator Value:	1.0	GAPI		
Background Reading:	0.0	cps		
Calibrator Reading:	1.0	cps		
Sensitivity:	1.1000	GAPI/cps		
Cement Bond Log Calibration Report				
Serial Number:	Titan4			
Tool Model:	4			
Performed:	Tue Aug 15 12:08:21 2006			
Depth:	1054.62	ft		
Casing Diameter:	5.5	in		
	3' Spacing	5' Spacing		
Signal Zero:	0	1	mV	
Calibrated Amplitude:	85	85	mV	
Reading at Signal Zero:	0.00161133	0.0143555	V	
Reading in Free Pipe:	1.23	1.65081	V	
Gain:	69.1963	51.3306		
Offset:	-0.111498	0.263125		

Sensor	Offset (ft)	Schematic	Description	Len (ft)	OD (in)	Wt (lb)
CHD	21.02		CHD-None (0)	0.75	1.50	5.00
CENT	20.27		CENT-X (2)	3.00	1.69	25.00
WVF5	13.45					
WVF3	12.45		CBL-4 (Titan4)	8.15	2.25	110.00
CENT	9.12		CENT-X (1)	3.00	1.69	25.00
CCL	4.99		CCL-TitanSH (SlimHole)	1.83	1.69	10.00
GR	1.43		GR-TitanSH (SlimHole)	4.28	1.69	28.00

Dataset:	ac1312x82206b.db: field/well/run1/pass1
Total Length:	21.02 ft
Total Weight:	203.00 lb
O.D.	2.25 in