



SUPERIOR
WELL SERVICES
Black Lick, Pa.
Mercer, Pa.
Wooster, Oh.
Cleveland, Ok.
Trinidad, Co.

CEMENT BOND GAMMA RAY 1000 PSI

Company XTO Energy Inc.
Well Apache Canyon 01-12
Field Purgatorie River
County Las Animas
State CO

Company XTO Energy Inc.
Well Apache Canyon 01-12
Field Purgatorie River
County Las Animas
State CO

Location: API #: 05 071 09475 00

Other Services
NEU/
PRES CONT

SEC 1 TWP 34S RGE 68W

Permanent Datum	Ground Level	Elevation	8109'
Log Measured From	Ground Level		
Drilling Measured From	Ground Level		

Elevation
K.B. -----
D.F. -----
G.L. 8109'

Date	3/24/08					
Run Number	one					
Depth Driller	2235'					
Depth Logger	2144'					
Bottom Logged Interval	2140'					
Top Log Interval	Surf.					
Open Hole Size	7 7/8"					
Type Fluid	water					
Density / Viscosity	///					
Max. Recorded Temp.	128F					
Estimated Cement Top	Surf.					
Time Well Ready	2:00					
Time Logger on Bottom	2:10					
Equipment Number	0703					
Location	Trinidad					
Recorded By	Worley					
Witnessed By	Mr. Dominguez					
Borehole Record						
Run Number	Bit	From	To	Size	Weight	To
Casing Record						
Surface String	Size	Wgt/Ft		Top	Bottom	
	8 5/8"			00	460'	
Prot. String						
Production String	5 1/2"			00	NA	
Liner						

<<< Fold Here >>>

All interpretations are opinions based on inferences from electrical or other measurements and we cannot and do not guarantee the accuracy or correctness of any interpretation, and we shall not, except in the case of gross or willful negligence on our part, be liable or responsible for any loss, costs, damages, or expenses incurred or sustained by anyone resulting from any interpretation made by any of our officers, agents or employees. These interpretations are also subject to our general terms and conditions set out in our current Price Schedule.

Comments

First Bosque entrance, right at Alamosito Canyon, stay on main road, well is on right side of road just before Alamosito Hill.

CBL ran under 1000 PSI.



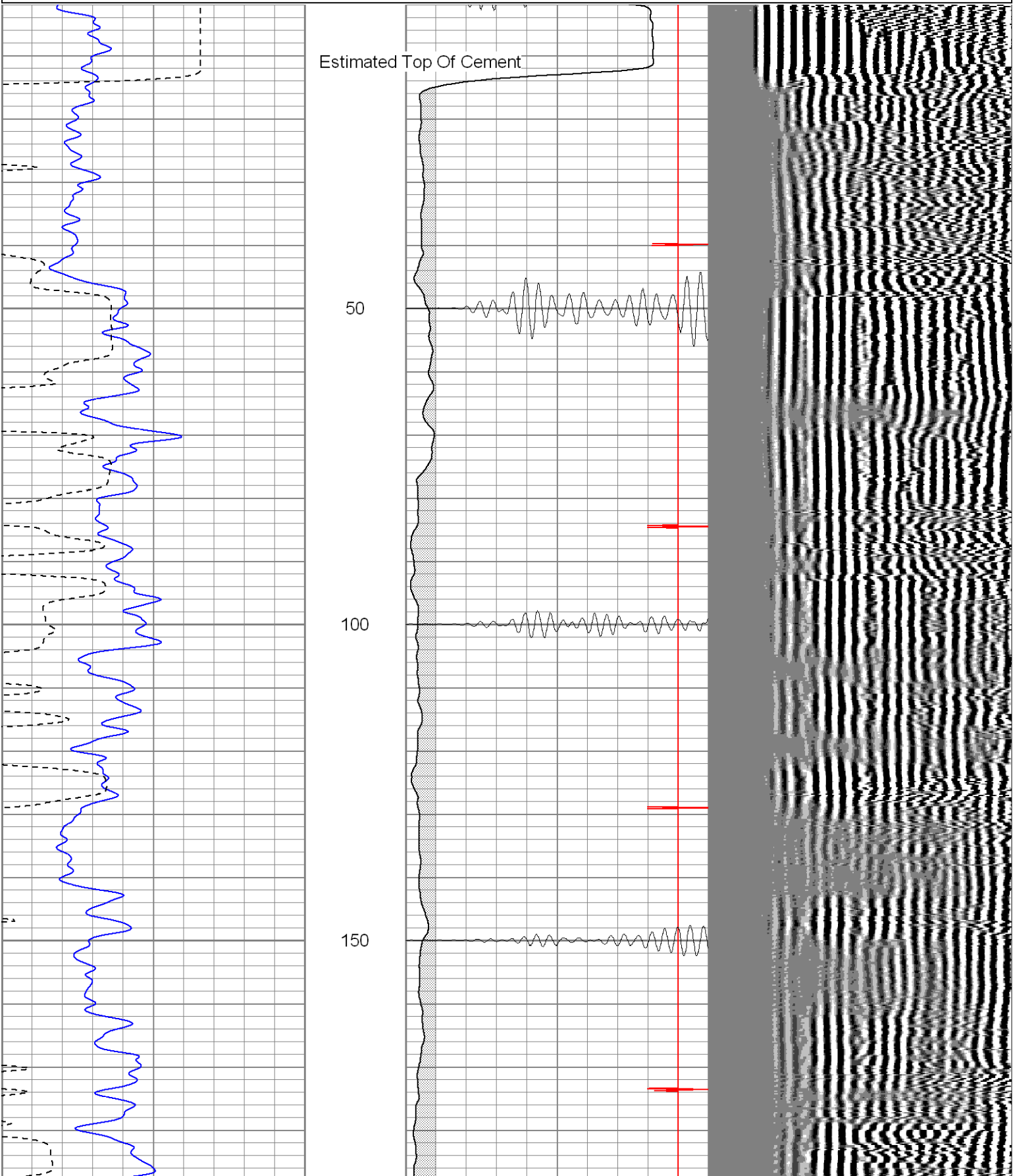
SUPERIOR

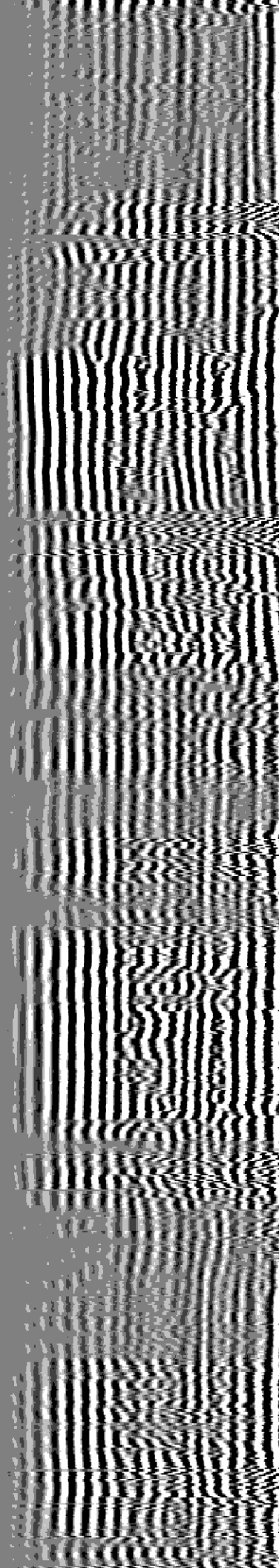
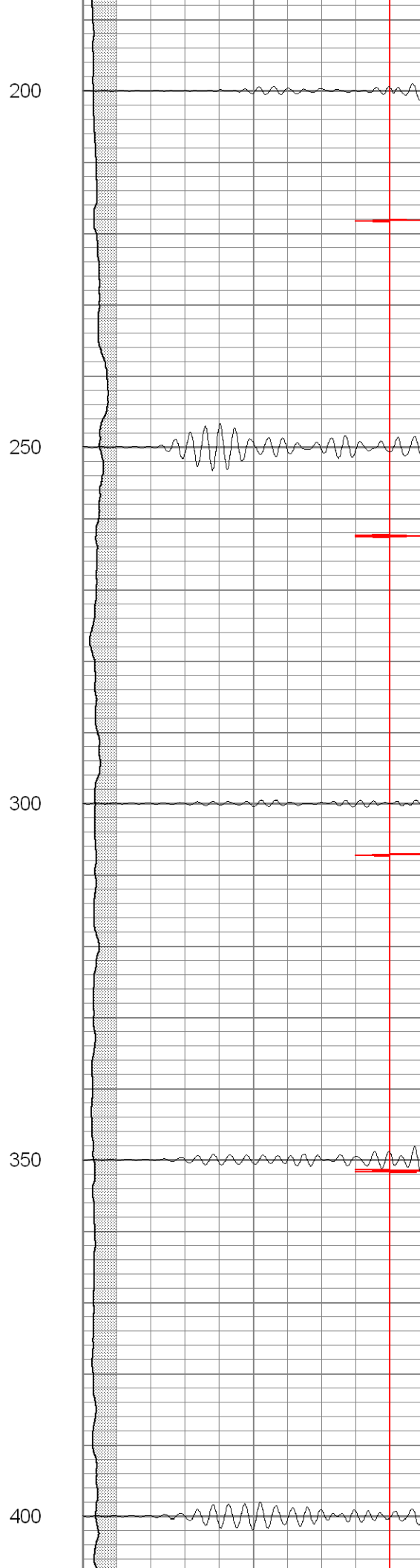
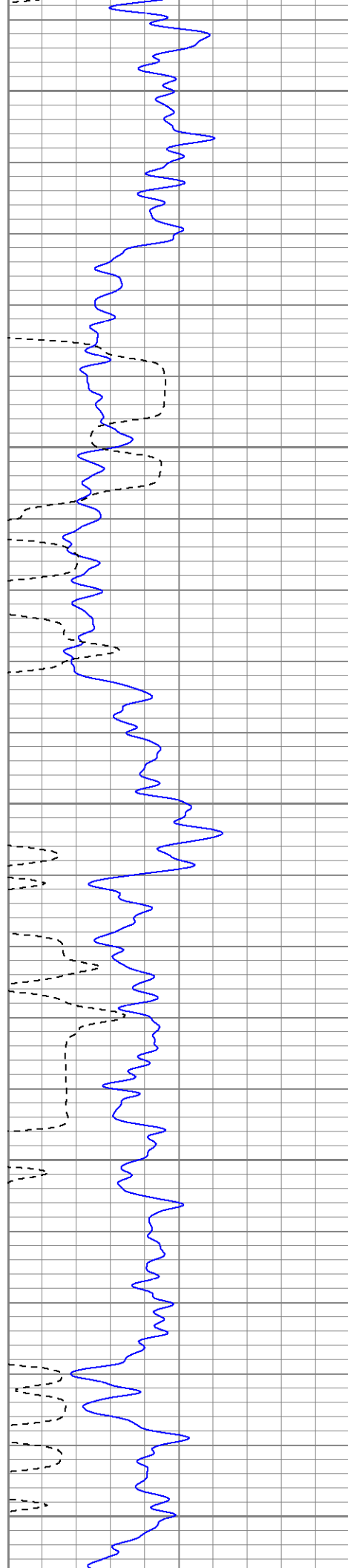
Black Lick, Pa.
Mercer, Pa.
Wooster, Oh.
Cleveland, Ok.
Trinidad, Co.

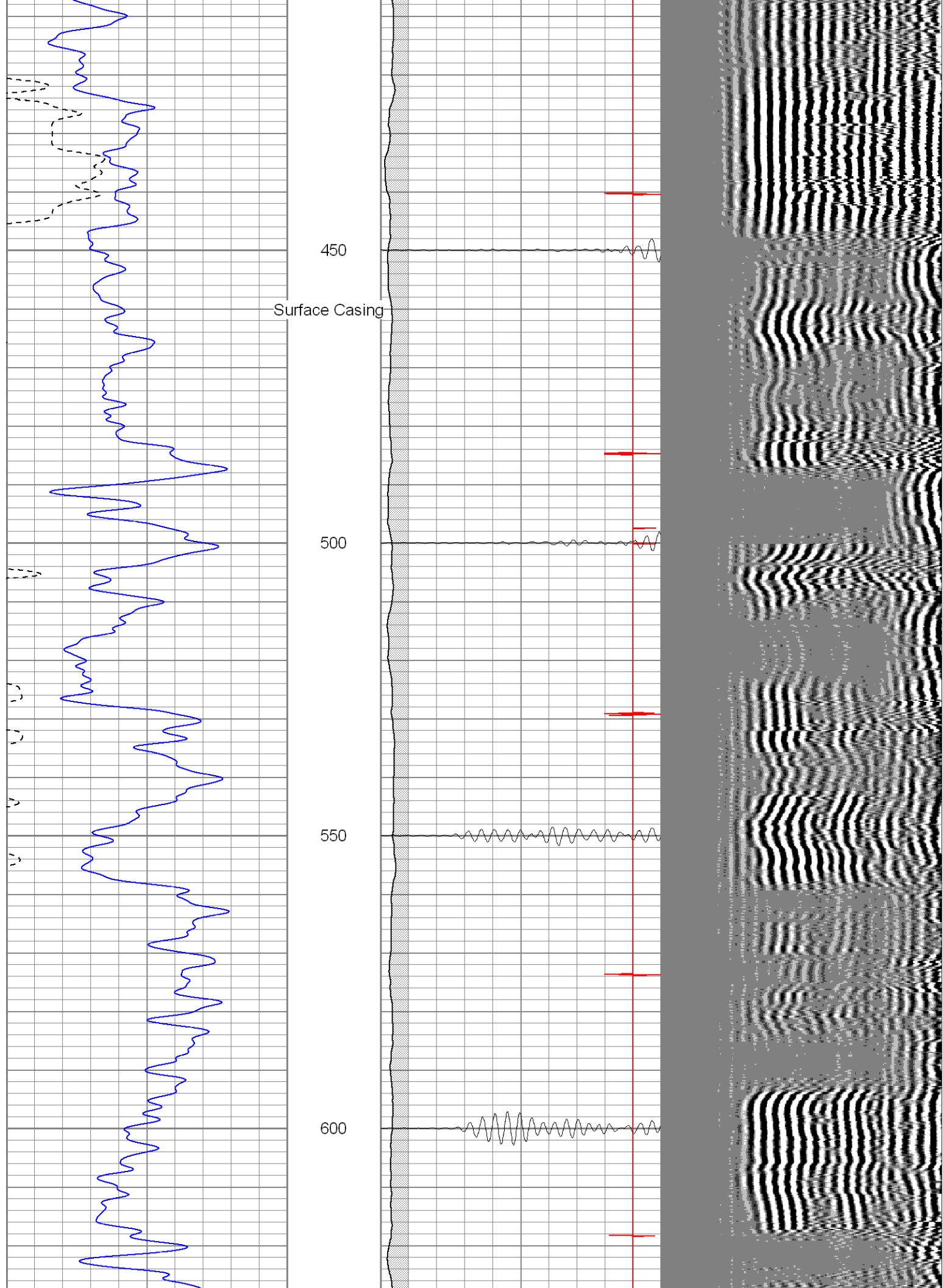
Main Pass 1000 PSI

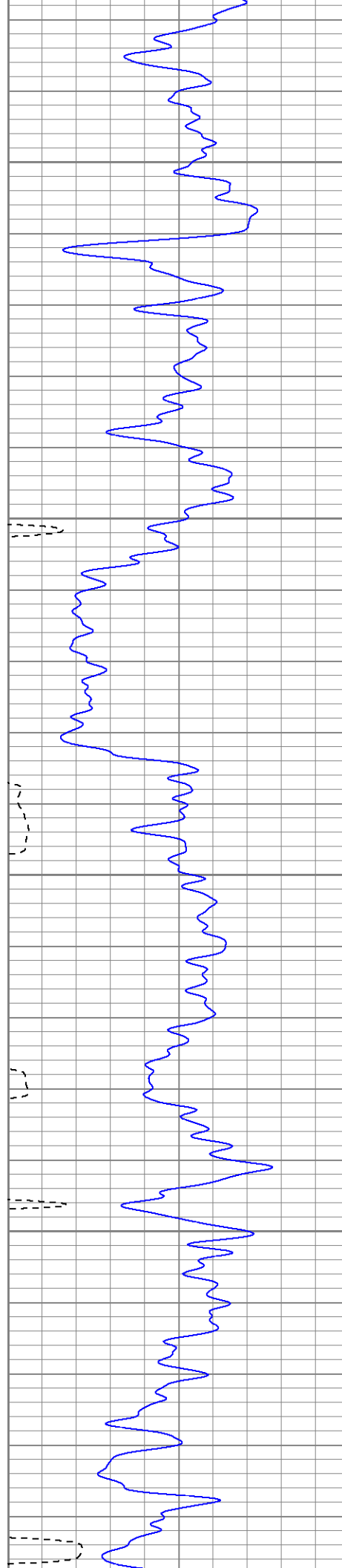
Database File: ac01-12gnb32408.db
Dataset Pathname: pass3.2
Presentation Format: cblrt
Dataset Creation: Mon Mar 24 16:43:27 2008 by Calc Open-Cased 071220
Charted by: Depth in Feet scaled 1:240

0	GR (GAPI)	200	0	AMP3 (mV)	100	200	CBL5	1200
400	TT3 (usec)	200	18	CCL	-2			
			200	CBL5	1200			







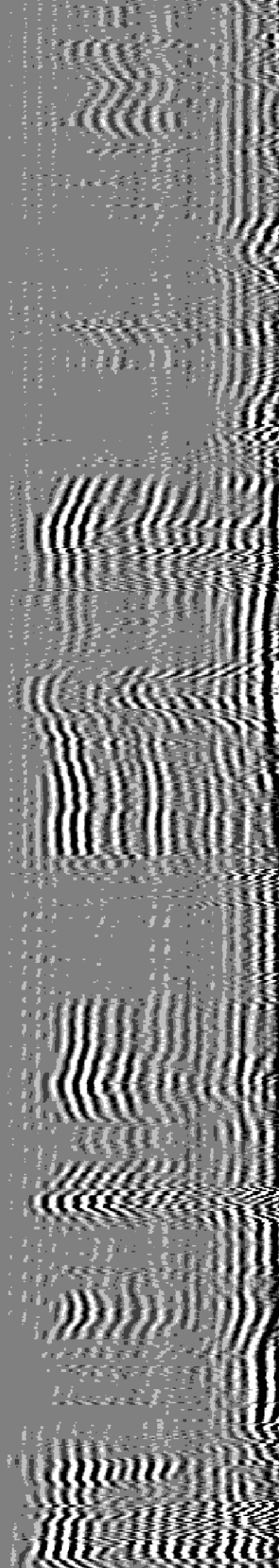
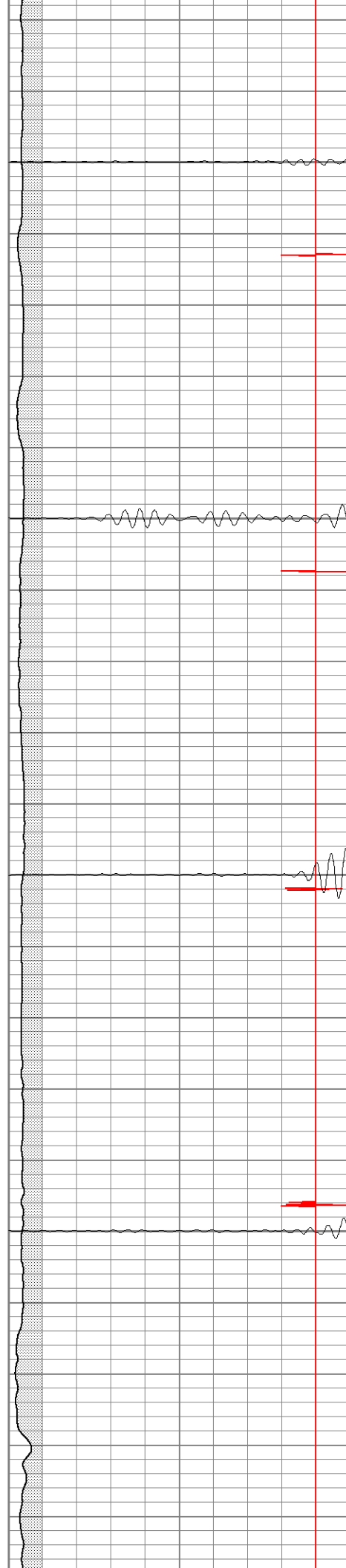


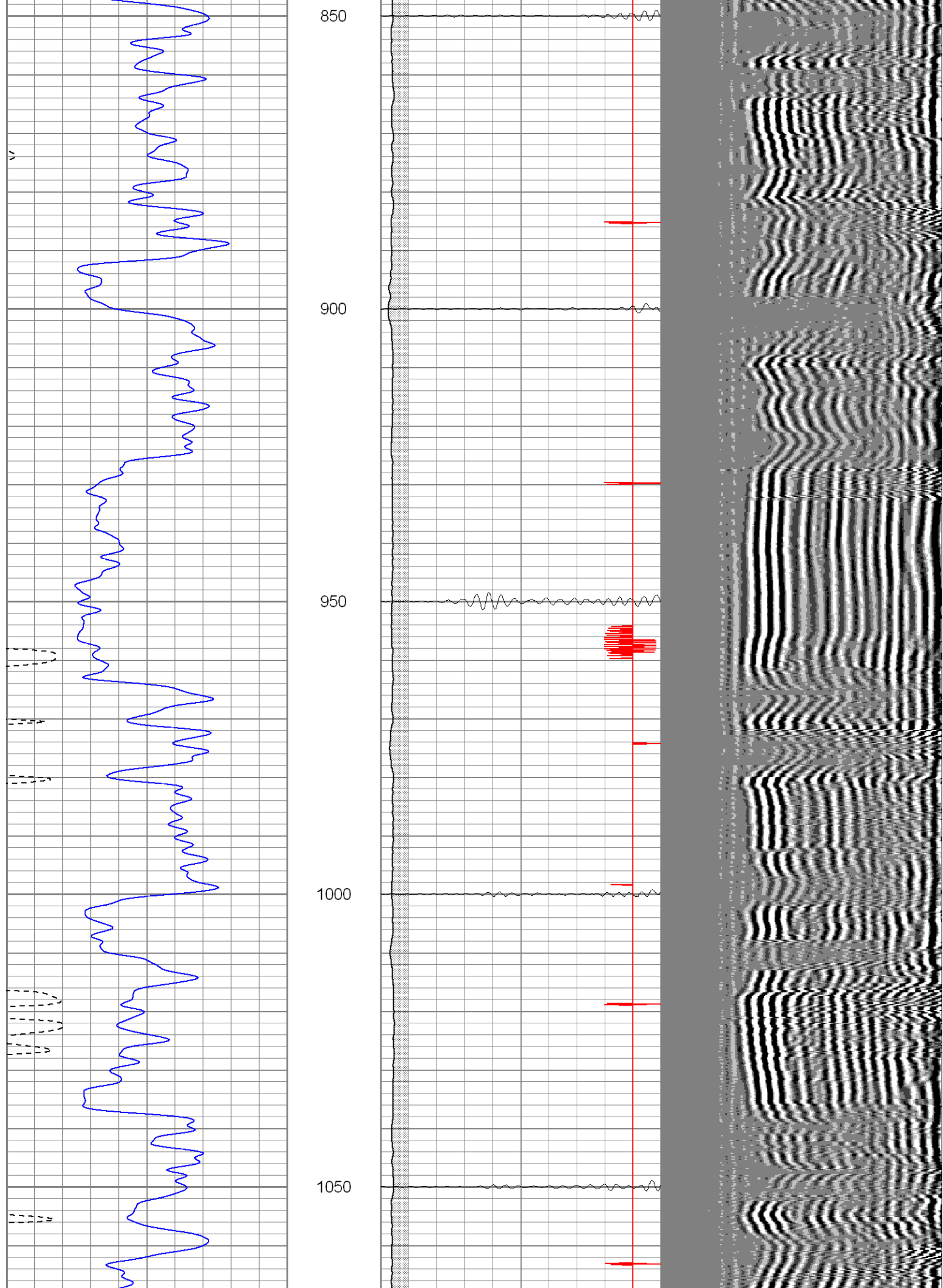
650

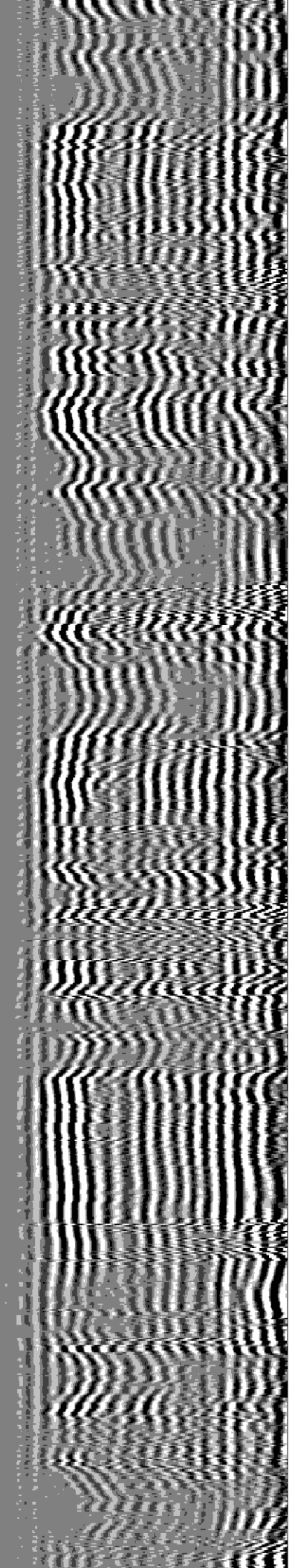
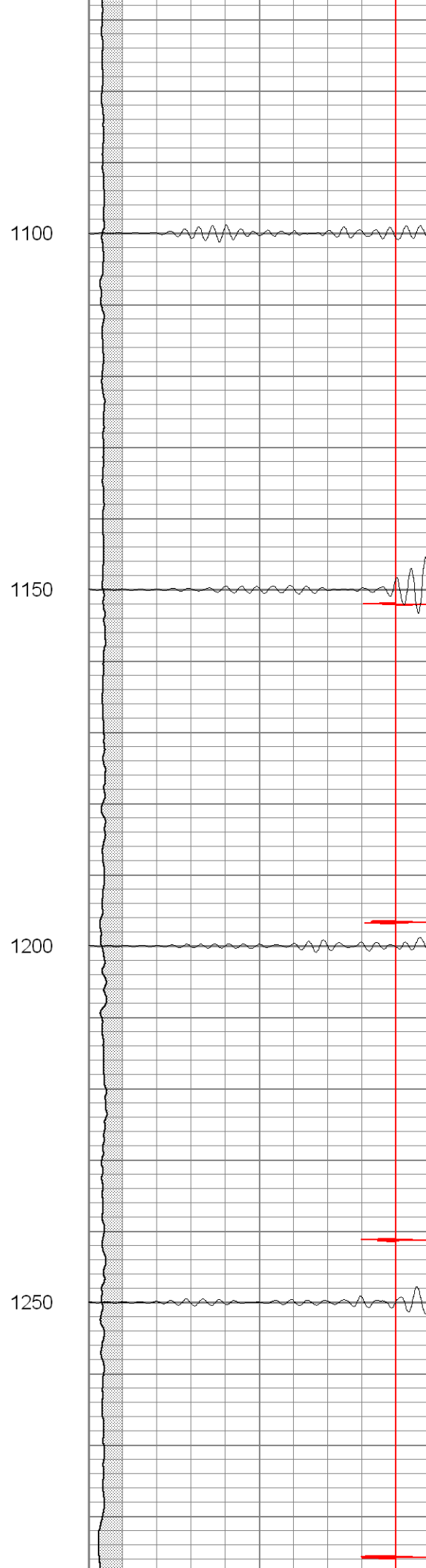
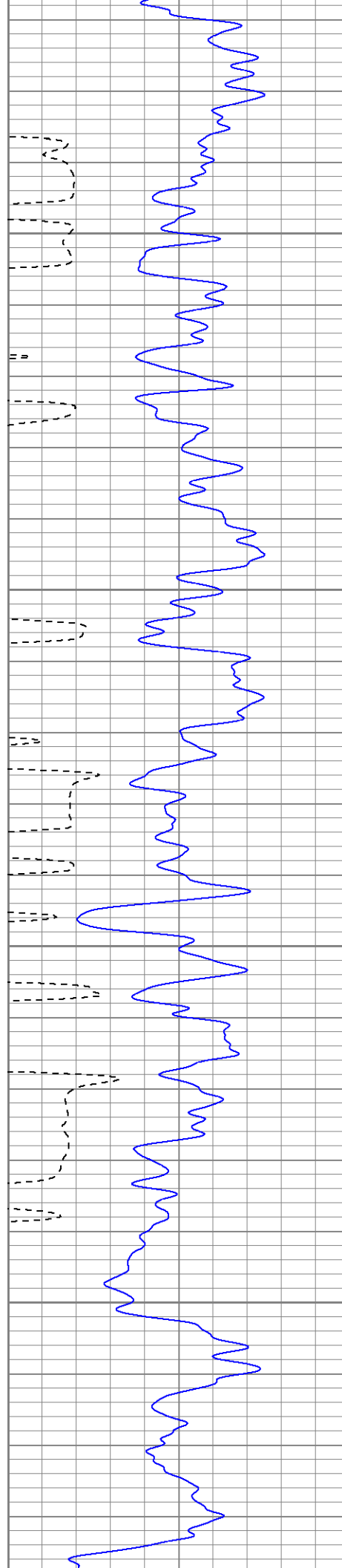
700

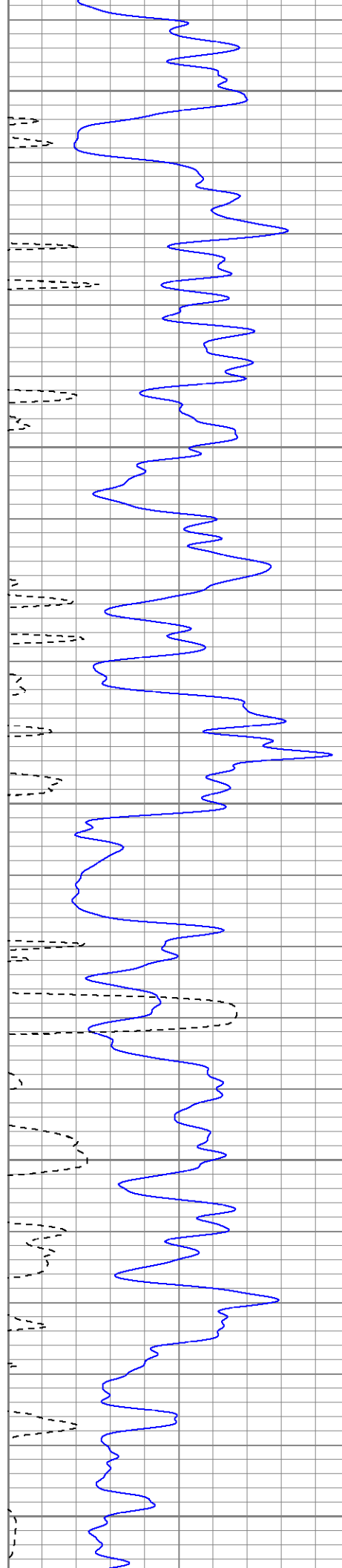
750

800









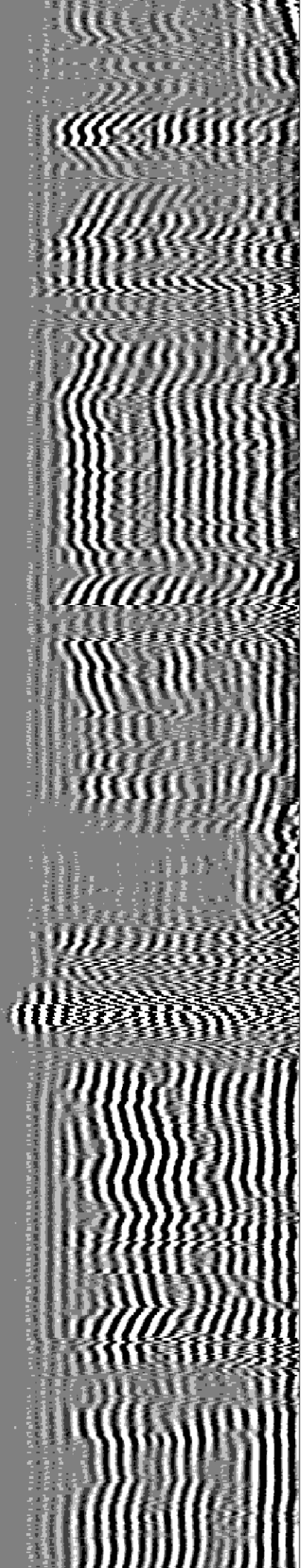
1300

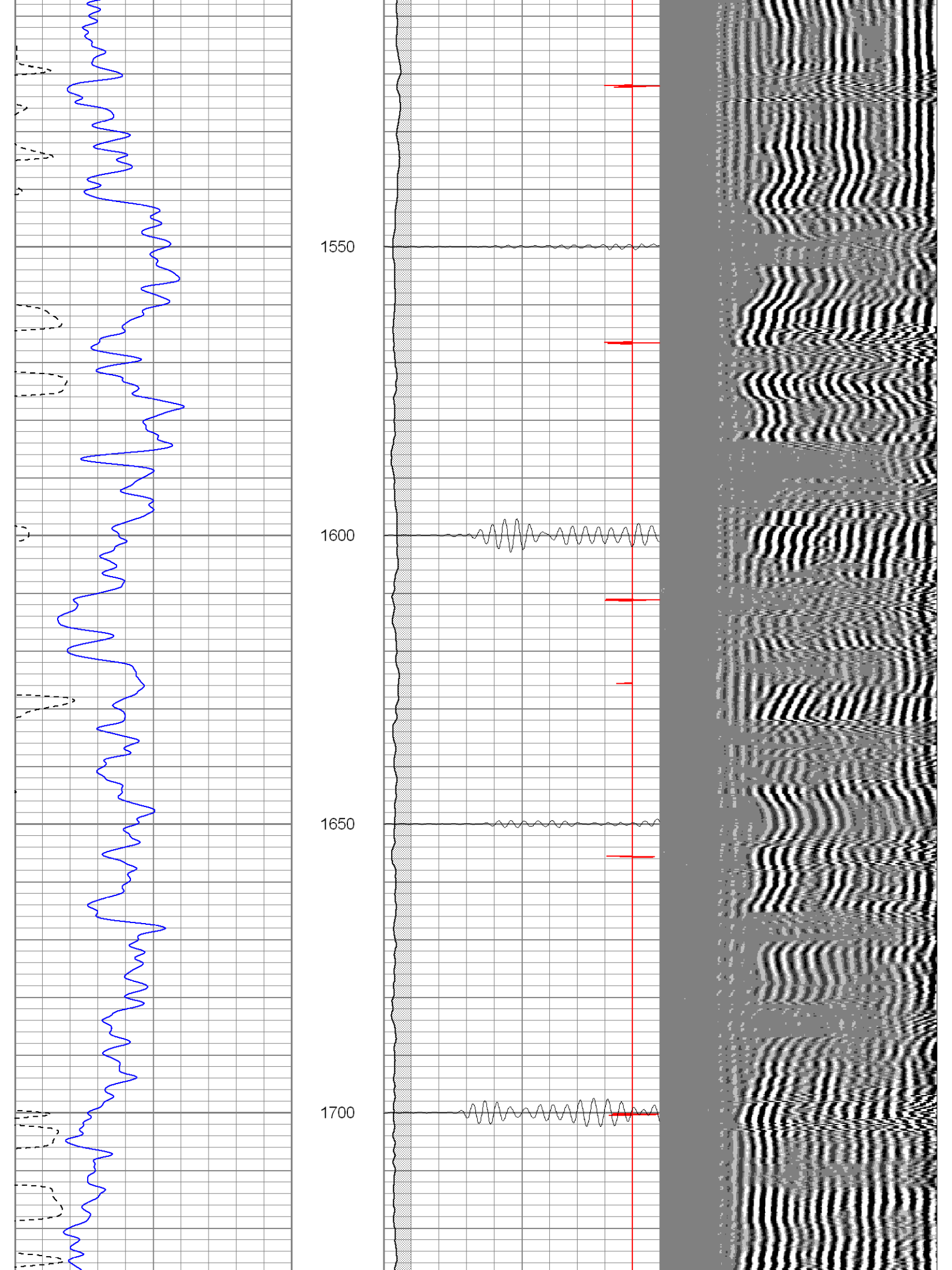
1350

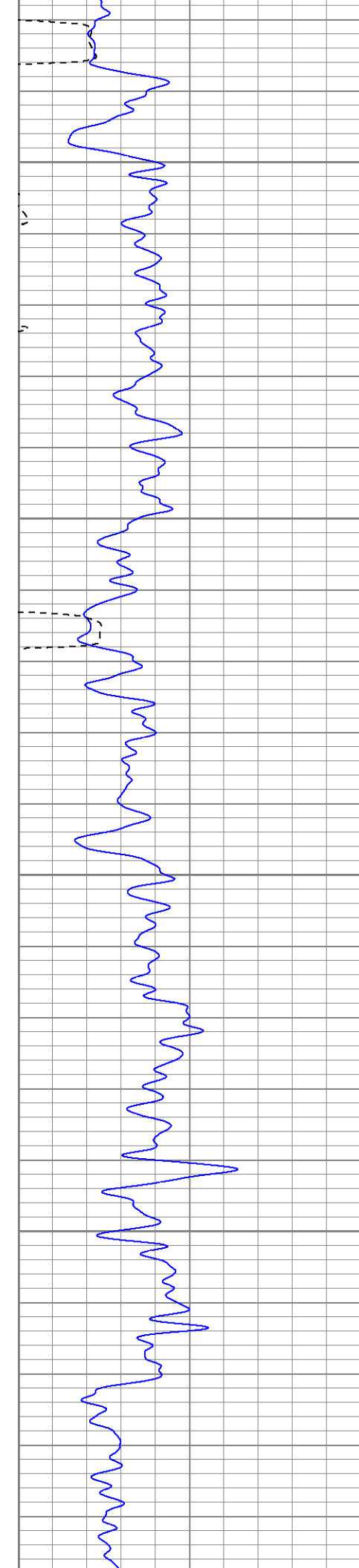
1400

1450

1500





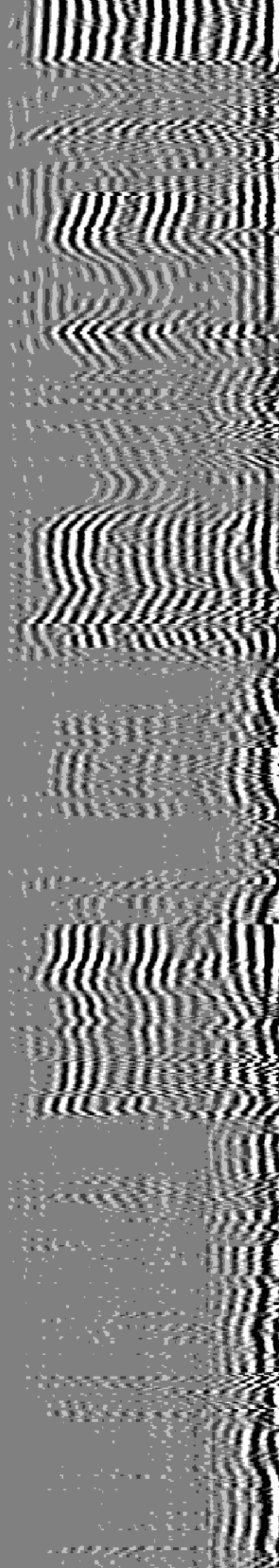
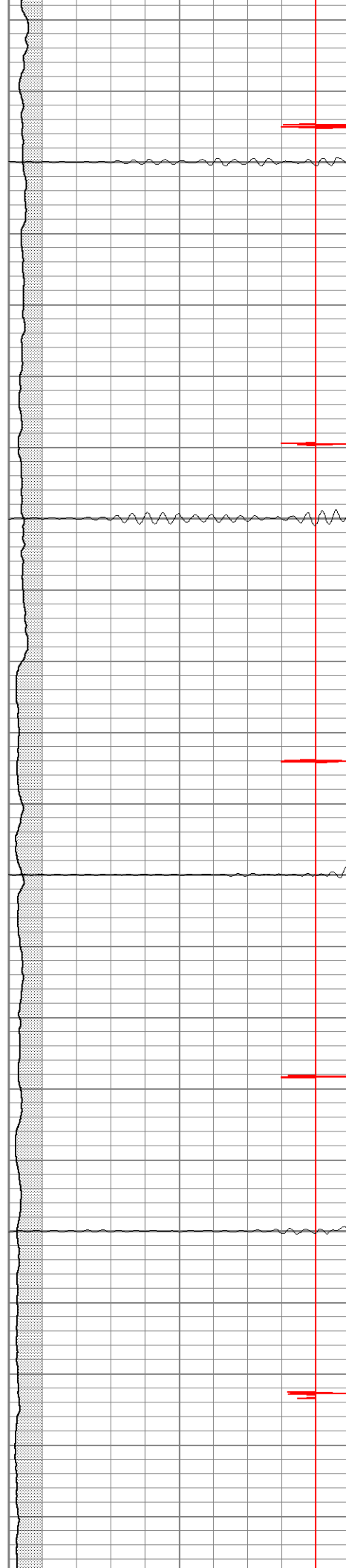


1750

1800

1850

1900





SUPERIOR

Black Lick, Pa.
Mercer, Pa.
Wooster, Oh.
Cleveland, Ok.
Trinidad, Co.

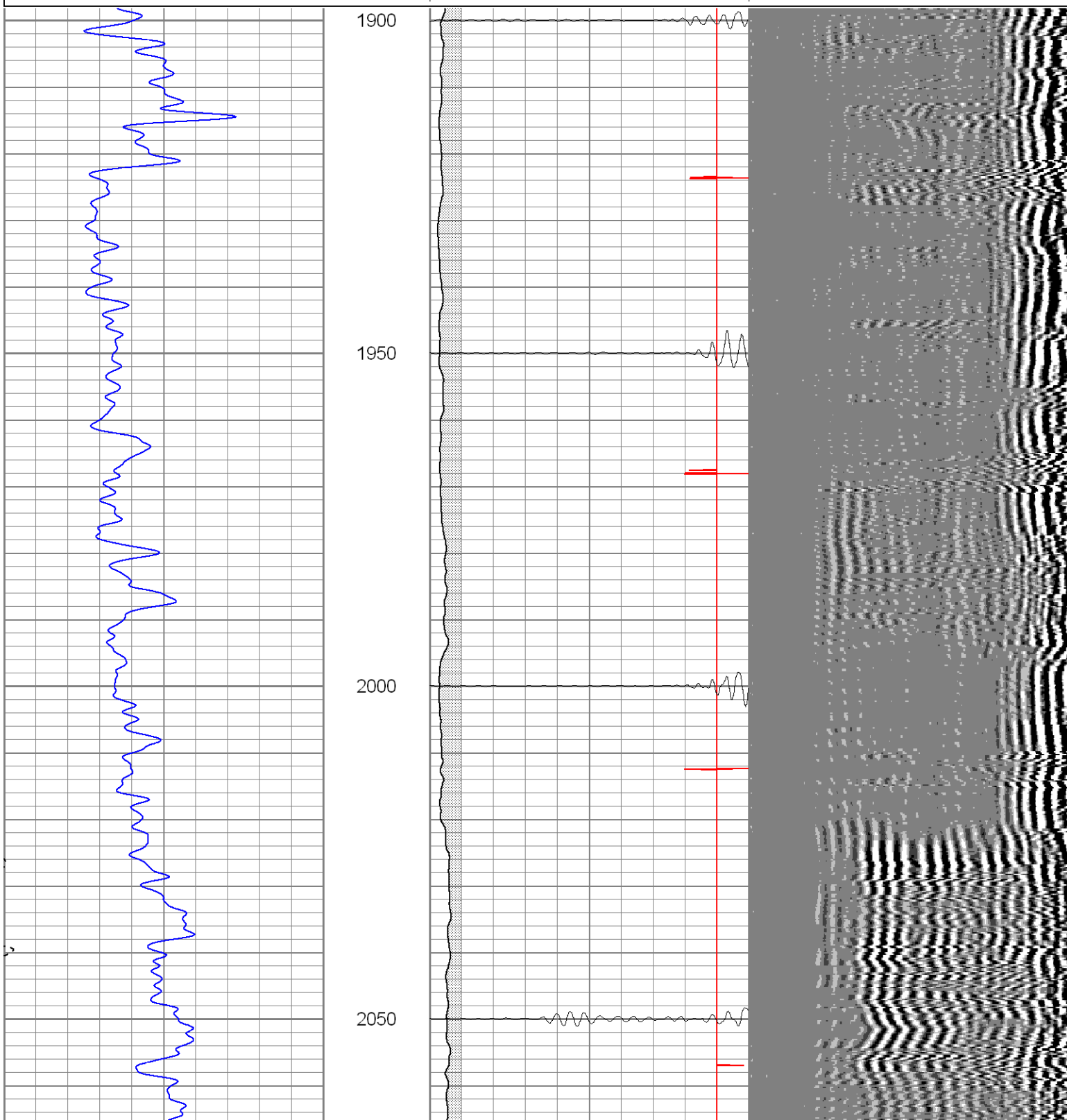
Repeat Section 0 PSI

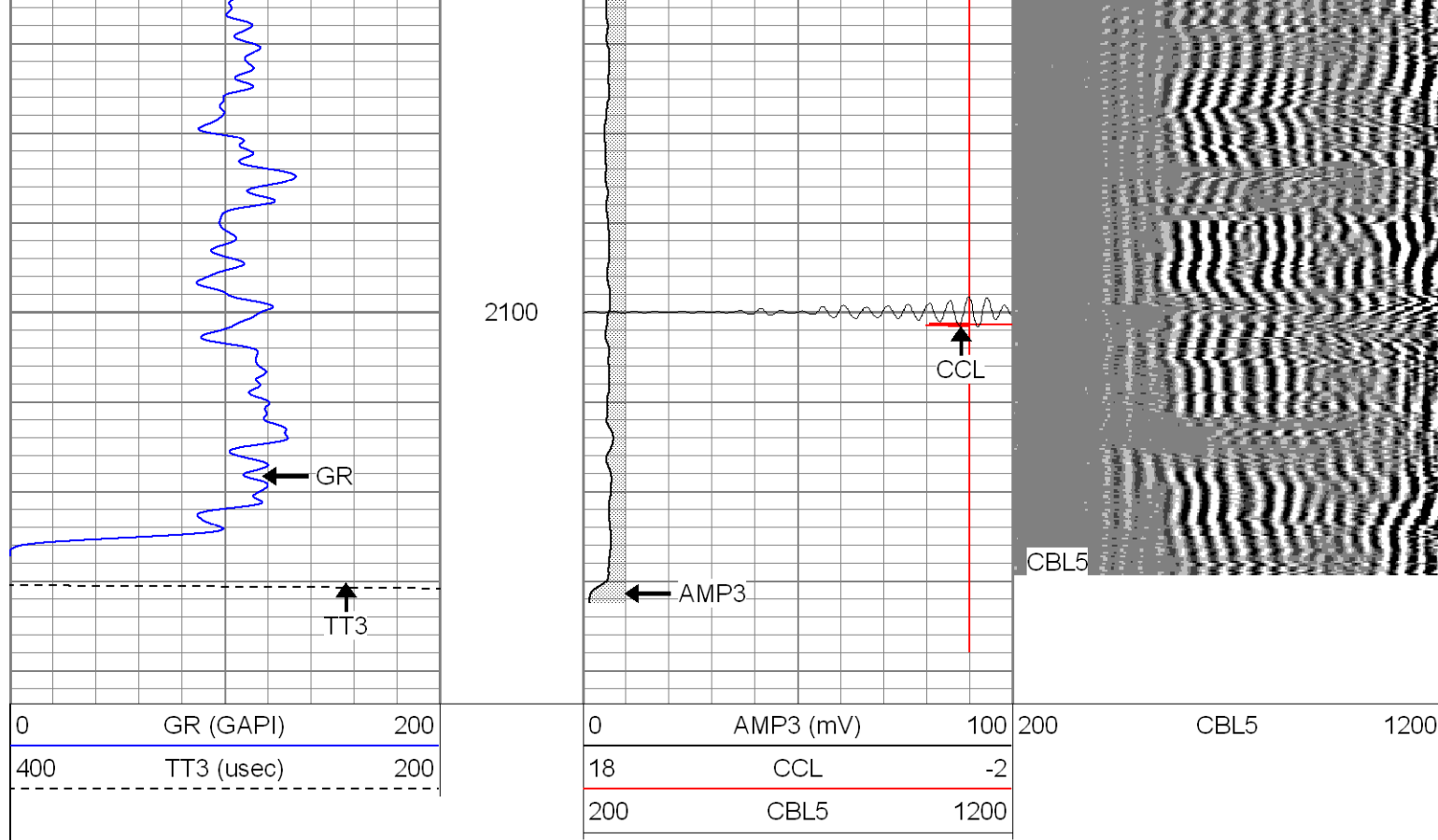
Database File: ac01-12gnb32408.db
Dataset Pathname: pass2.1
Presentation Format: cblrt
Dataset Creation: Mon Mar 24 16:55:04 2008 by Calc Open-Cased 071220
Charted by: Depth in Feet scaled 1:240

0	GR (GAPI)	200
400	TT3 (usec)	200
<hr/>		

0	AMP3 (mV)	100
18	CCL	-2
200	CBL5	1200

200 CBL5 1200





Calibration Report

Database File: ac01-12gnb32408.db
 Dataset Pathname: pass2.1
 Dataset Creation: Mon Mar 24 16:55:04 2008 by Calc Open-Cased 071220

Neutron Calibration Report

Serial Number: Titan
 Tool Model: T
 Performed: Mon Mar 24 13:19:34 2008

Calibrator Value: 1200 NAPI

Calibrator Reading: 1700 cps

Sensitivity: 0.705882 NAPI/cps

Cement Bond Log Calibration Report

Serial Number: Titan2
 Tool Model: T2
 Performed: Mon Mar 24 13:20:54 2008

Depth: 371.336 ft
 Casing Diameter: 5.5 in

	3' Spacing	5' Spacing	
Signal Zero:	0	0	mV
Calibrated Amplitude:	85	85	mV
Reading at Signal Zero:	-0.04	-0.03	V
Reading in Free Pipe:	2.05	1.75	V
Gain:	40.6699	47.7528	
Offset:	1.62679	1.43258	

Gamma Ray Calibration Report

Serial Number:	TITAN2	
Tool Model:	T2	
Performed:	Mon Mar 24 13:19:13 2008	
Calibrator Value:	1.0	GAPI
Background Reading:	0.0	cps
Calibrator Reading:	1.0	cps
Sensitivity:	1.3500	GAPI/cps