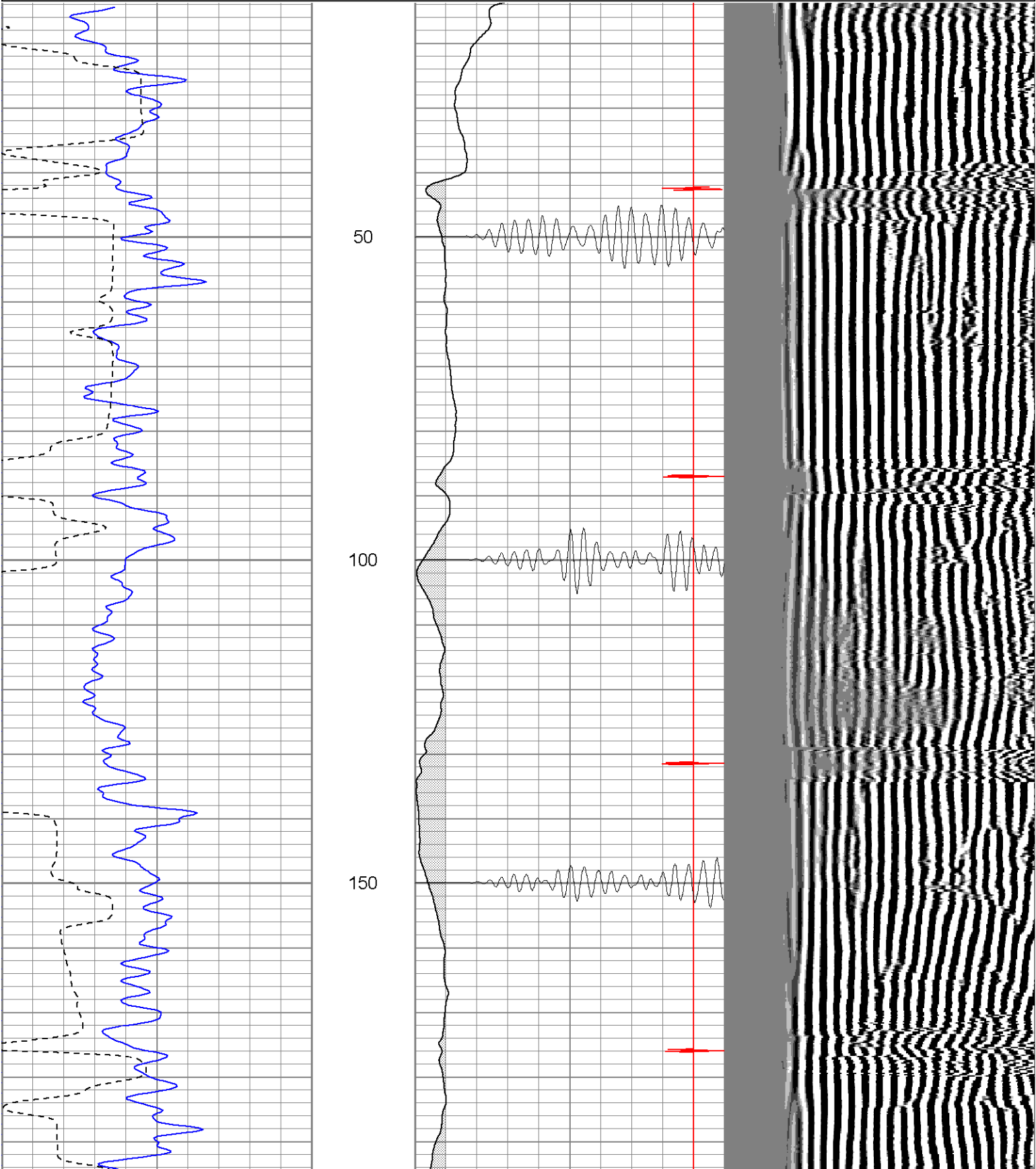
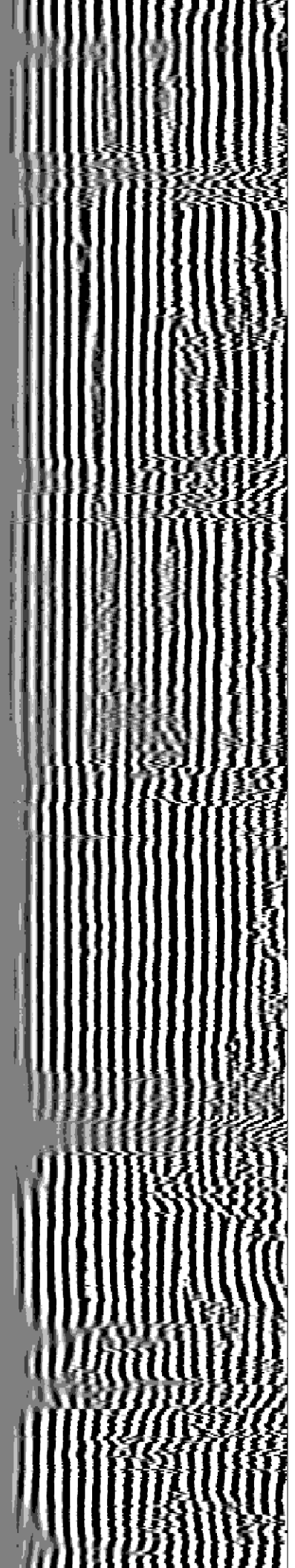
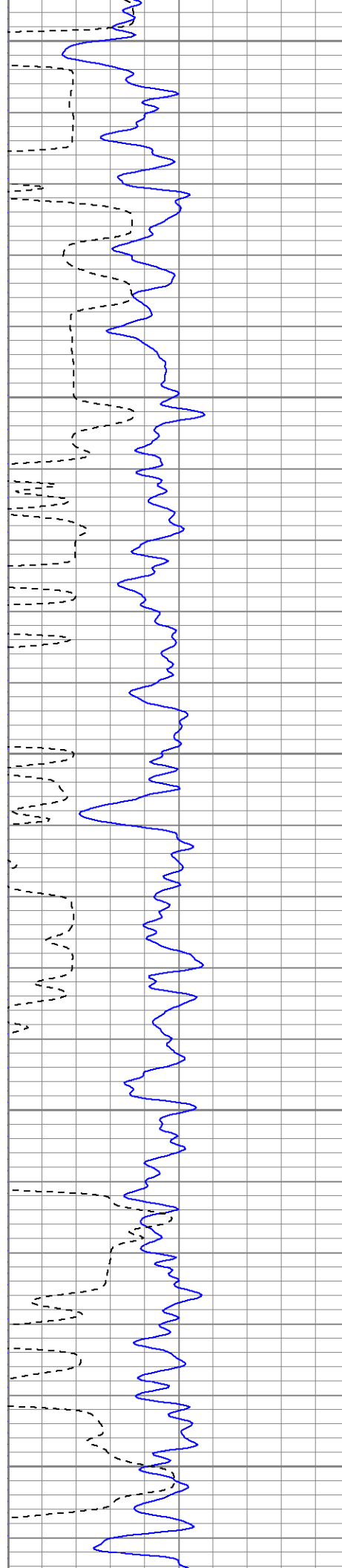


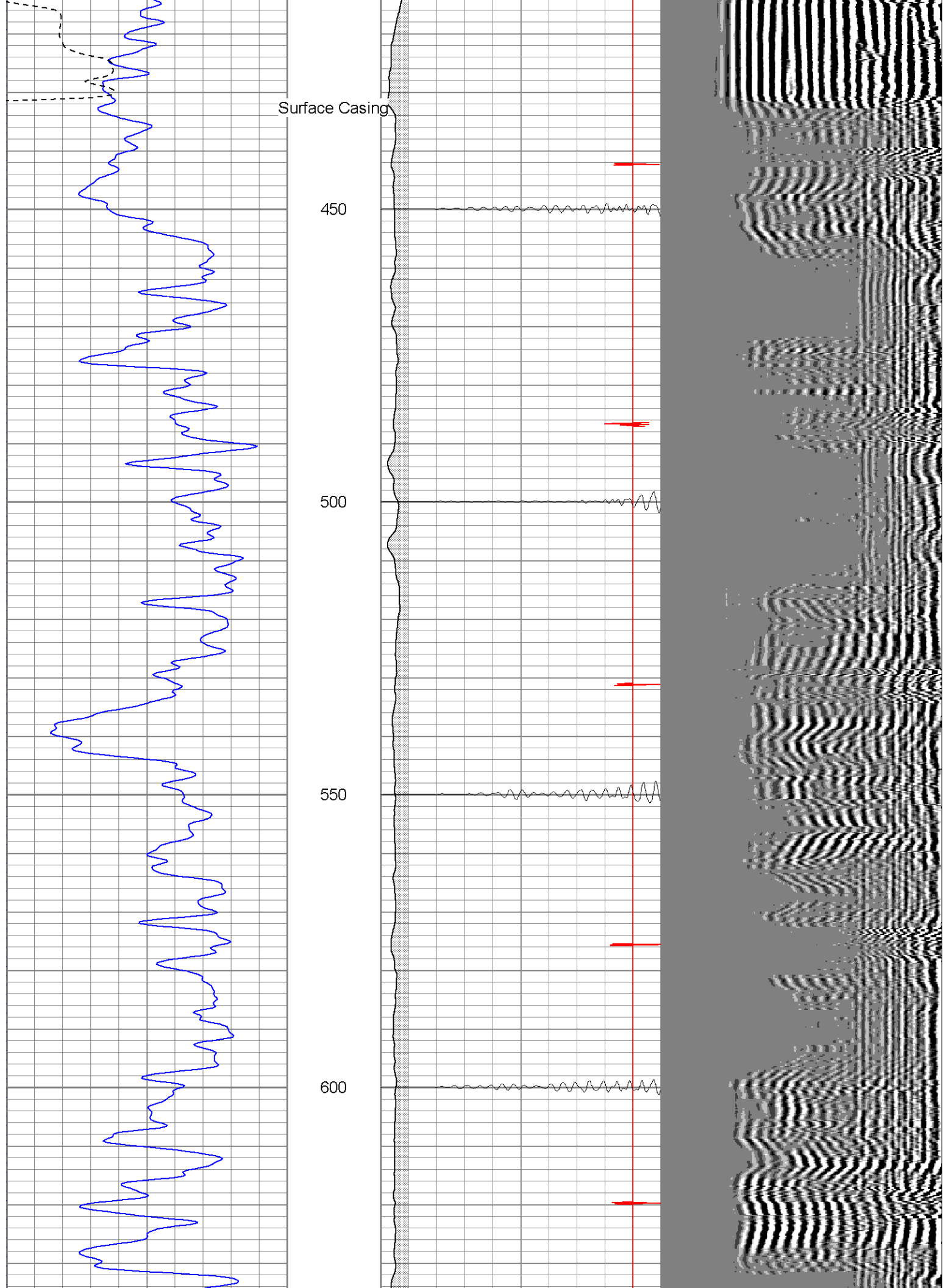
Company		XTO Energy, Inc.	
Well		Hill Ranch 27-07	
Field		Purgatoire River	
County		Las Animas	
State		CO	
		Comp	
		Well	
		Field	
		County	
		Location	
		Permanent Log Measuring Drilling Measure	
Date			
Run Number			
Depth Driller			
Depth Logger			
Bottom Logged Interval			
Top Log Interval			
Open Hole Size			
Type Fluid			
Density / Viscosity			
Max. Recorded Temp.			
Estimated Cement Top			
Time Well Ready			
Time Logger on Bottom			
Equipment Number			
Location			
Recorded By			
Witnessed By			
Borehole Record			
Run Number	Bit	Fracture	
Casing Record		Size	
Surface String		8 5/8	
Prot. String			
Production String		5 1/2	
Liner			

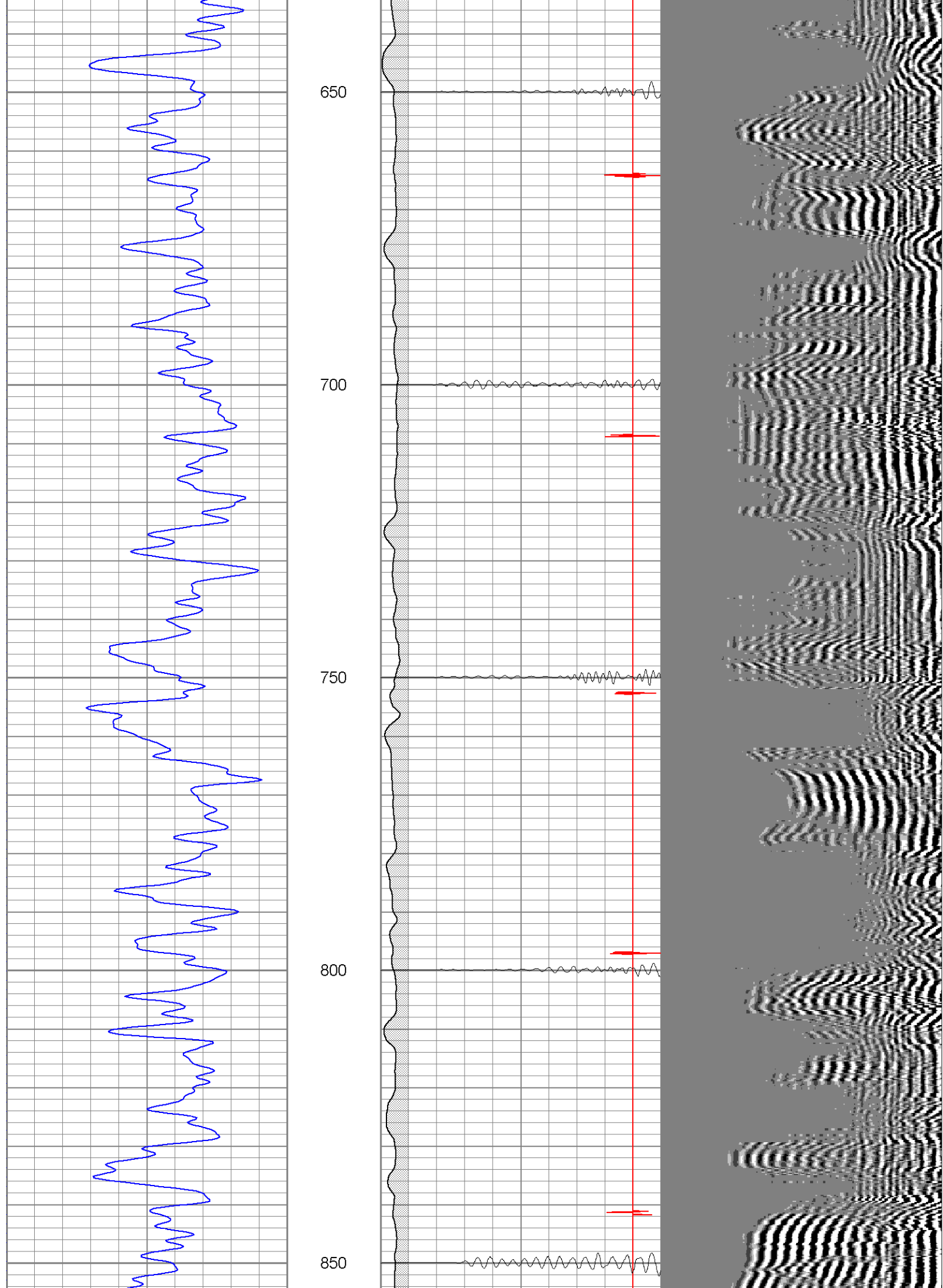
Database File: hillranch270781706b.db  
Dataset Pathname: pass2  
Presentation Format: cblrt  
Dataset Creation: Thu Aug 17 16:02:21 2006 by Log Open-Cased 060407  
Charted by: Depth in Feet scaled 1:240

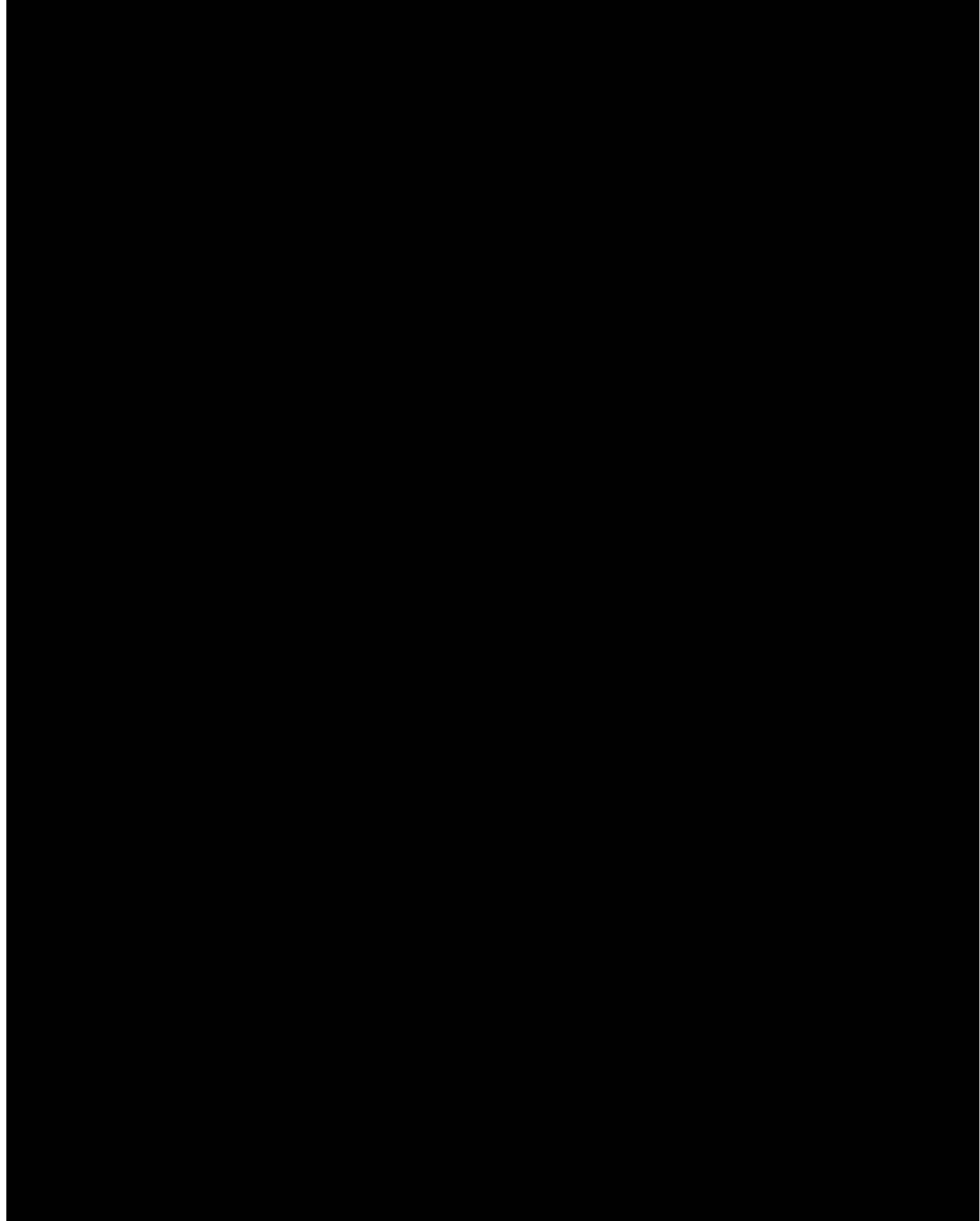
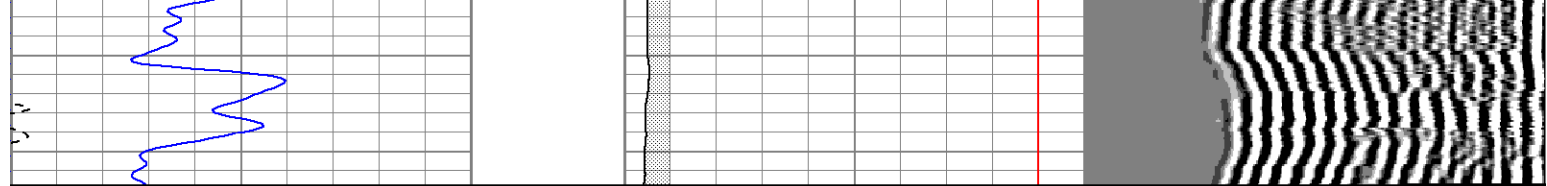
0	GR (GAPI)	200	0	AMP3 (mV)	100	200	Variable Density	1200
200	GR (GAPI)	400	18	CCL	-2			
400	TT3 (usec)	200	200	CBL5	1200			
-----								



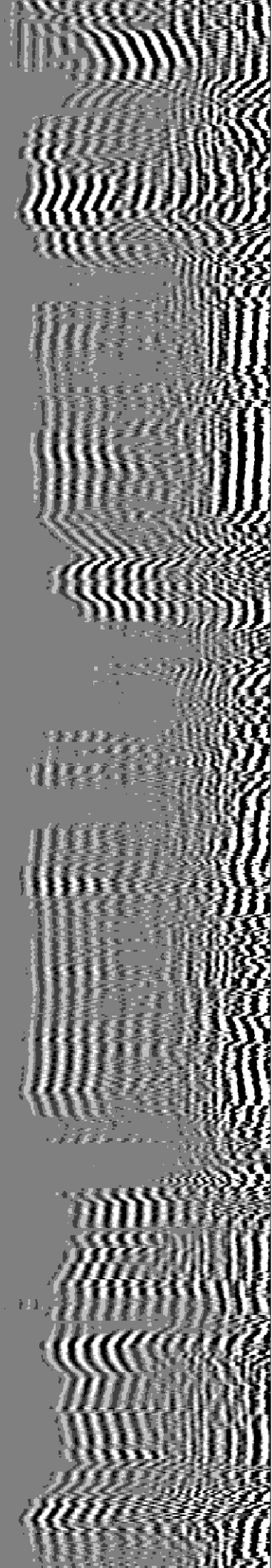
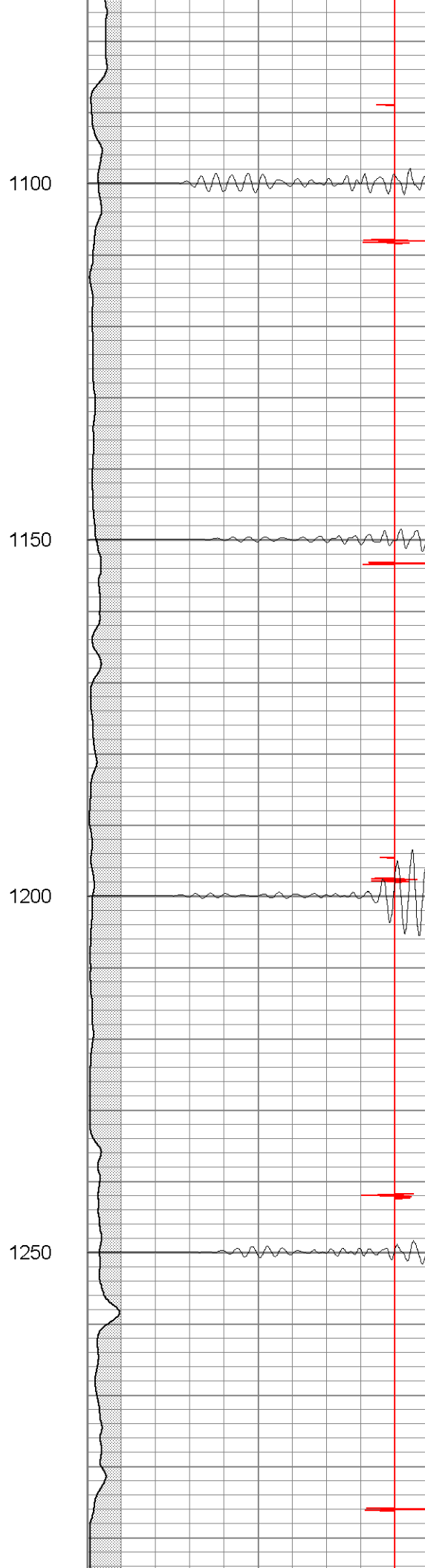
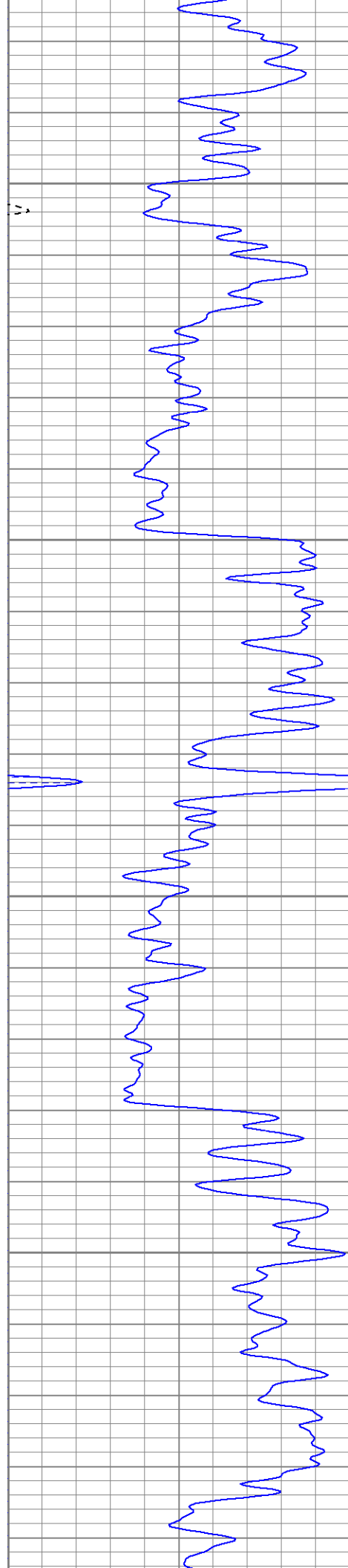


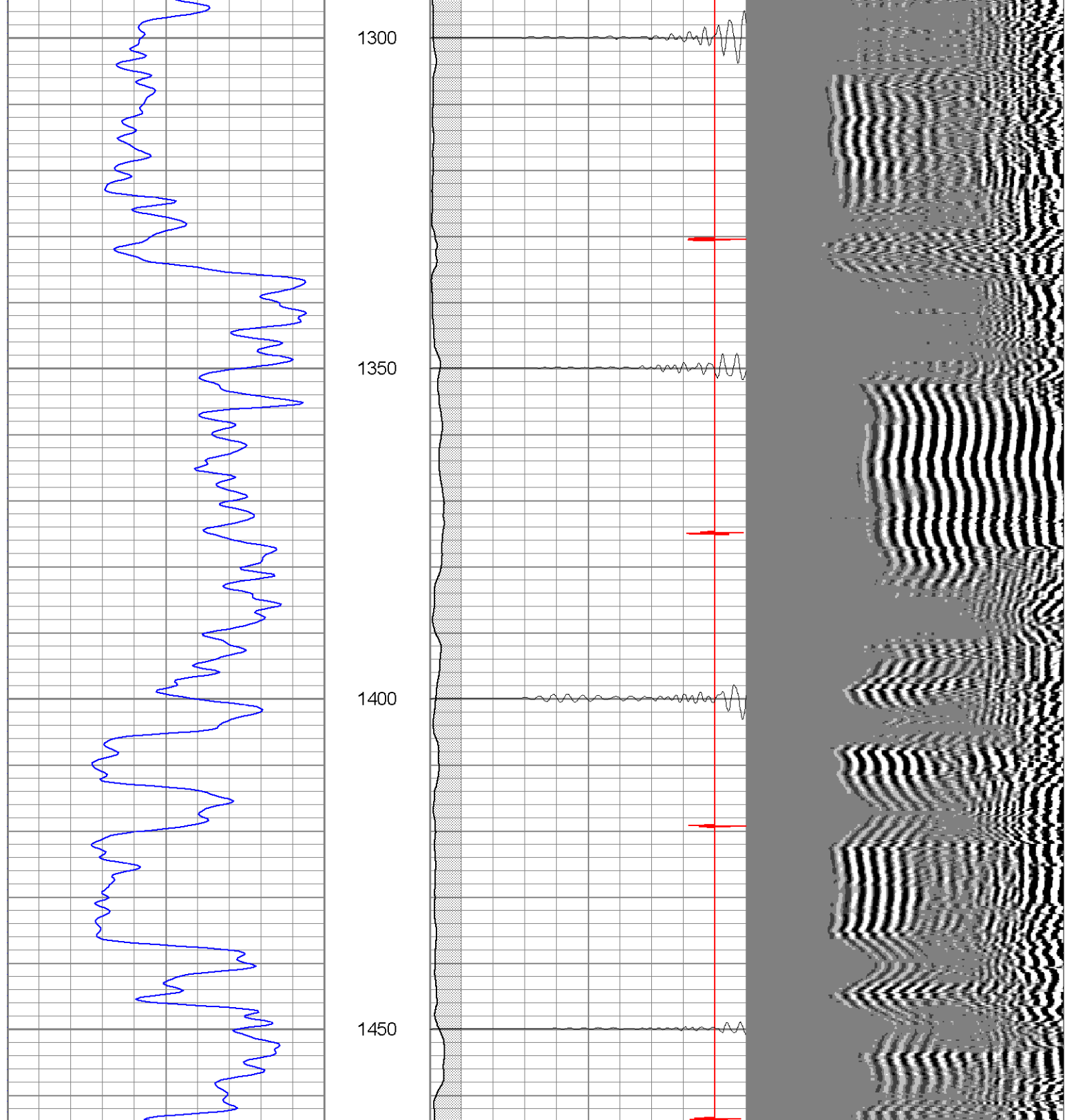




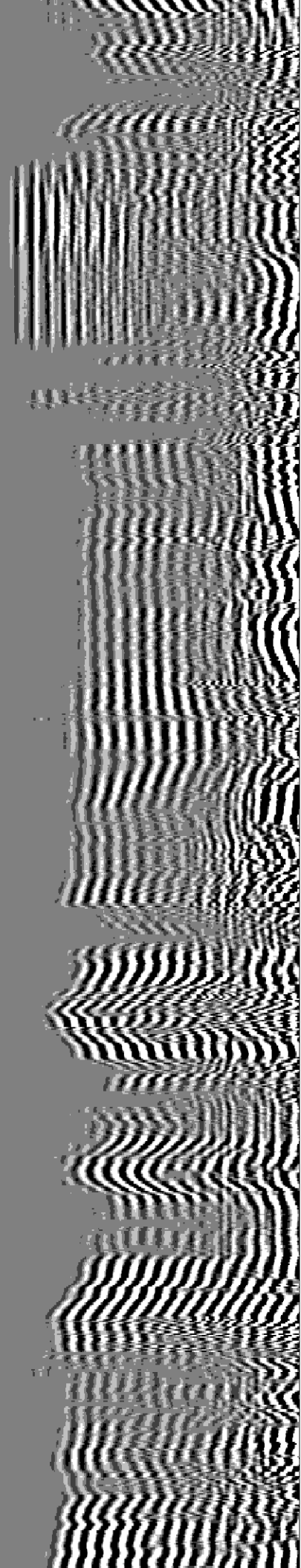
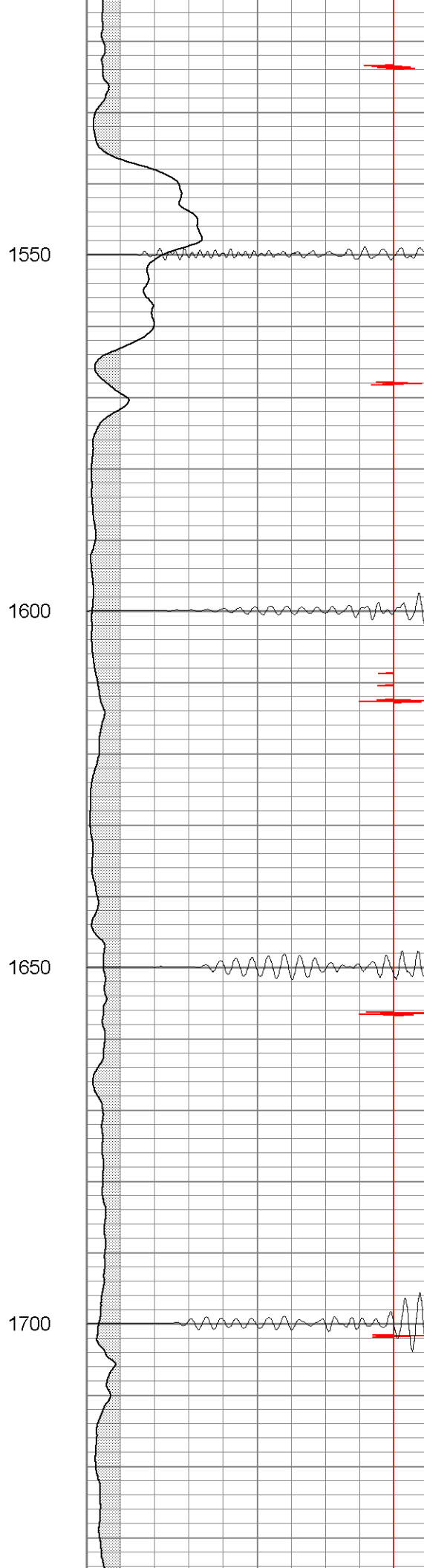
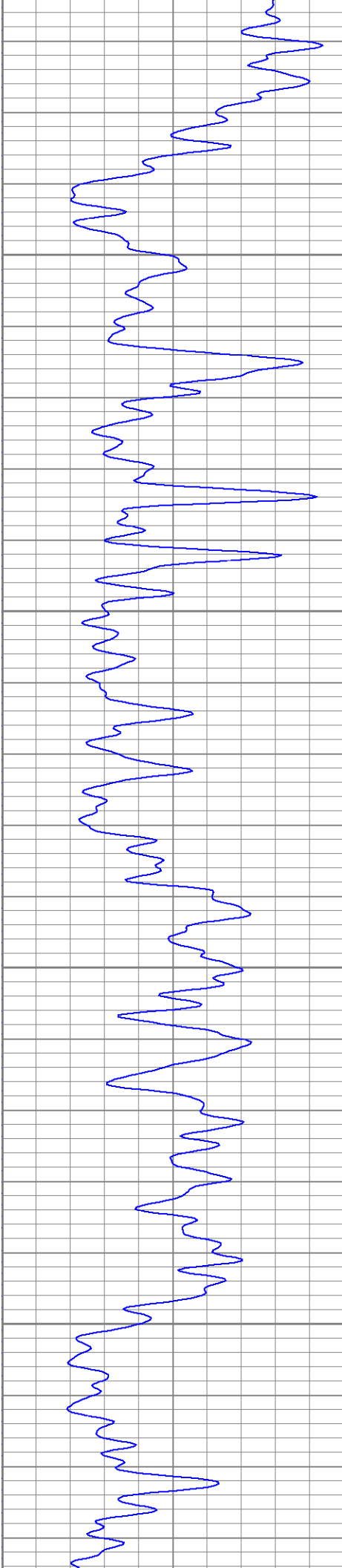


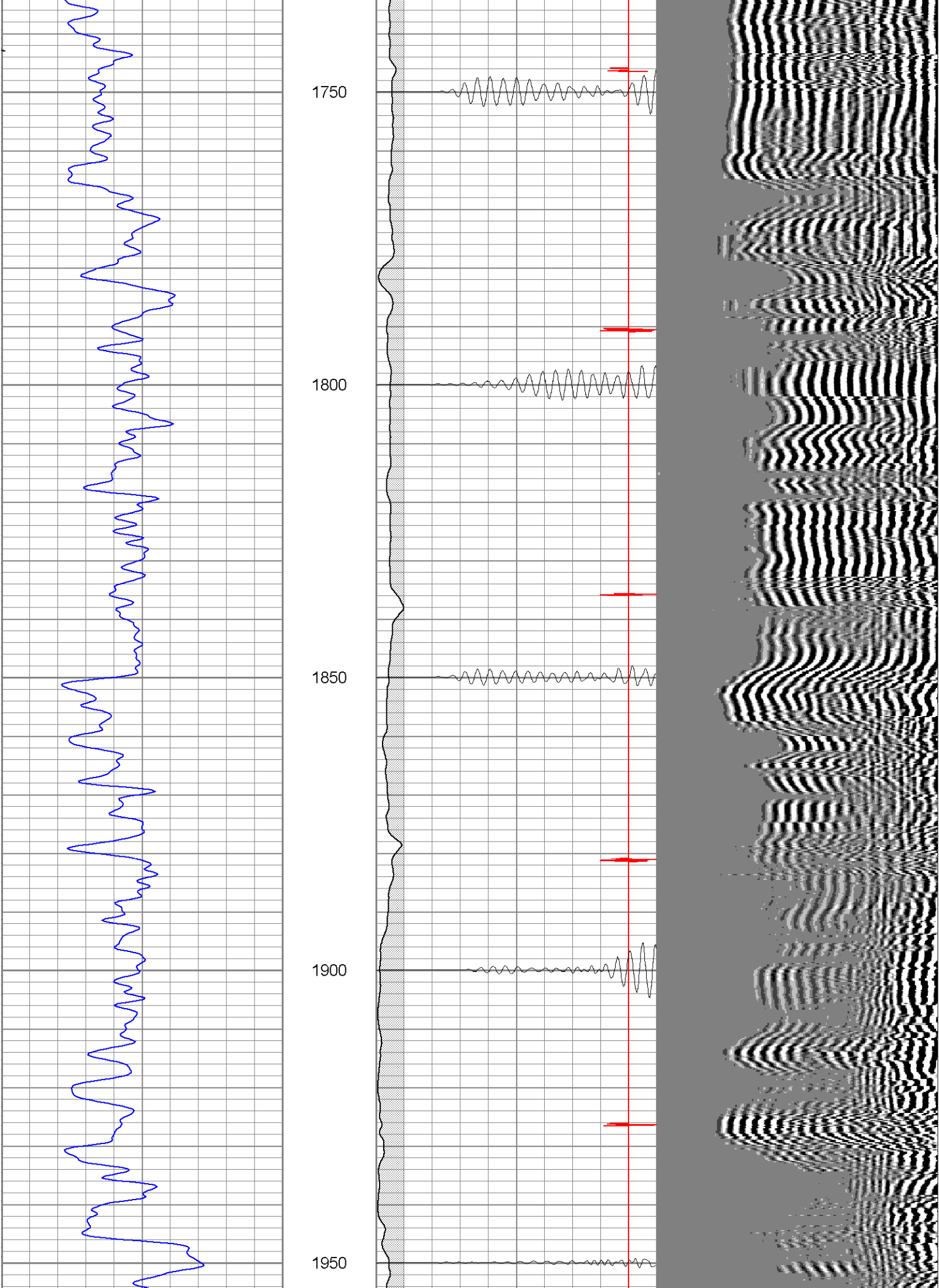


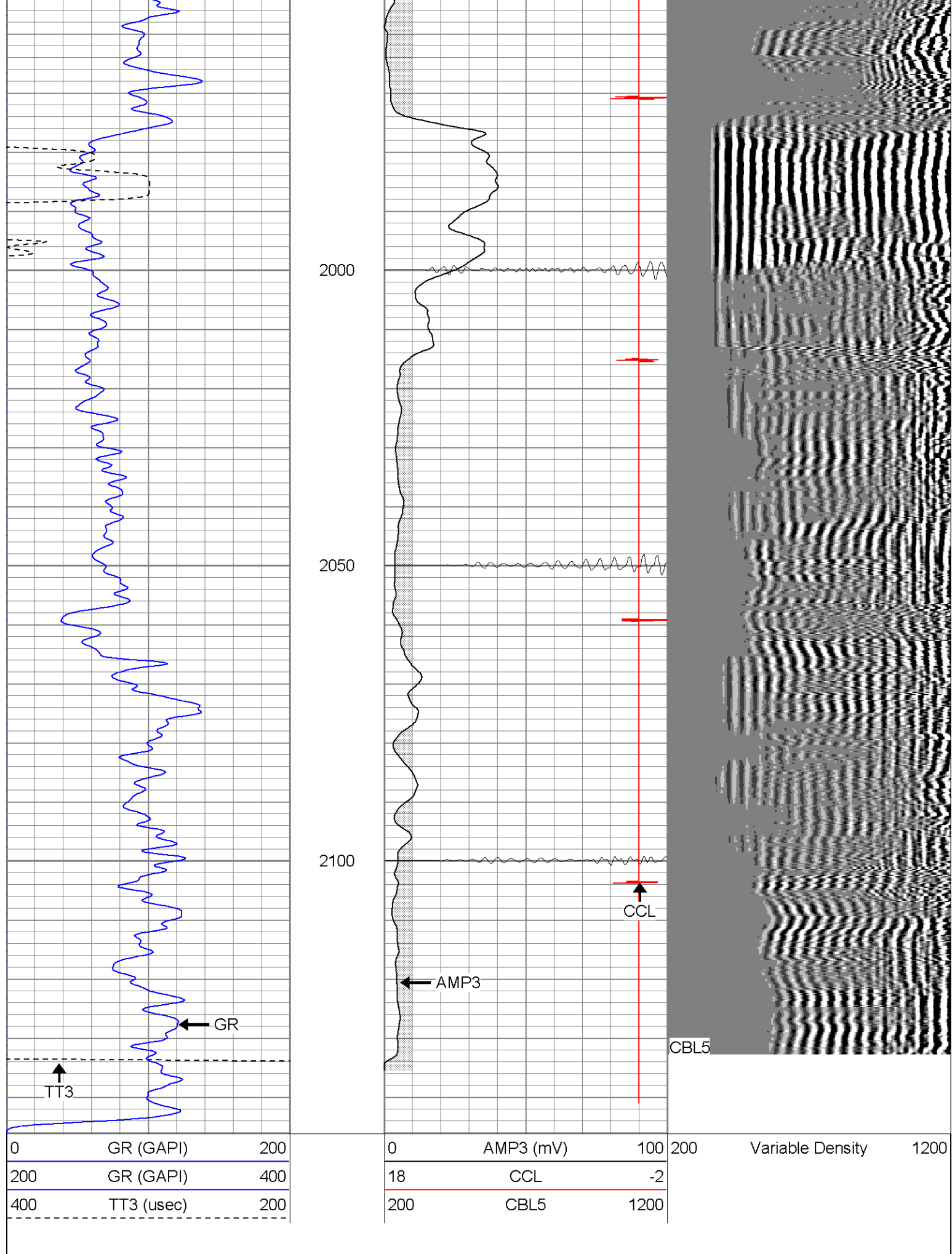






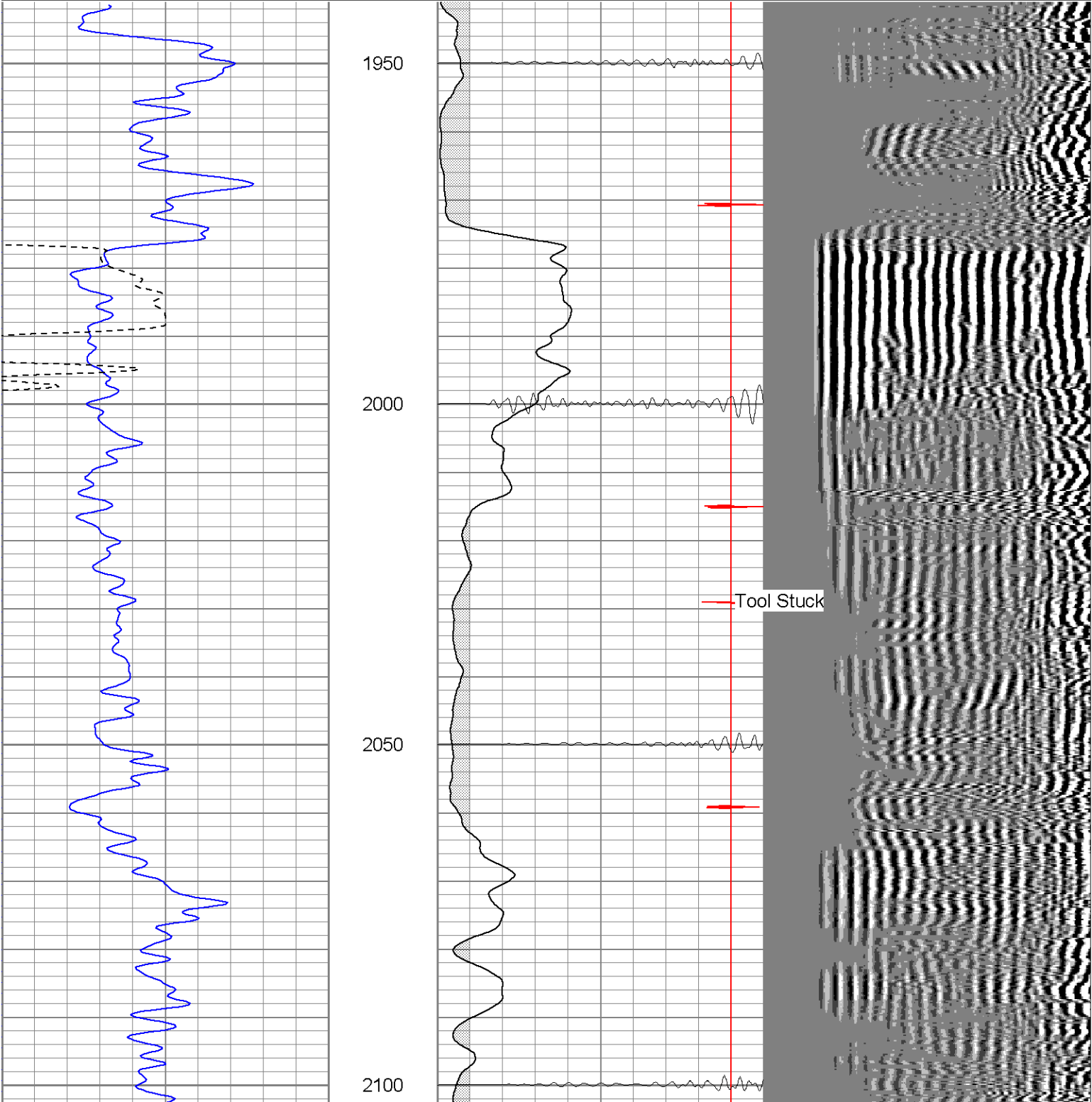


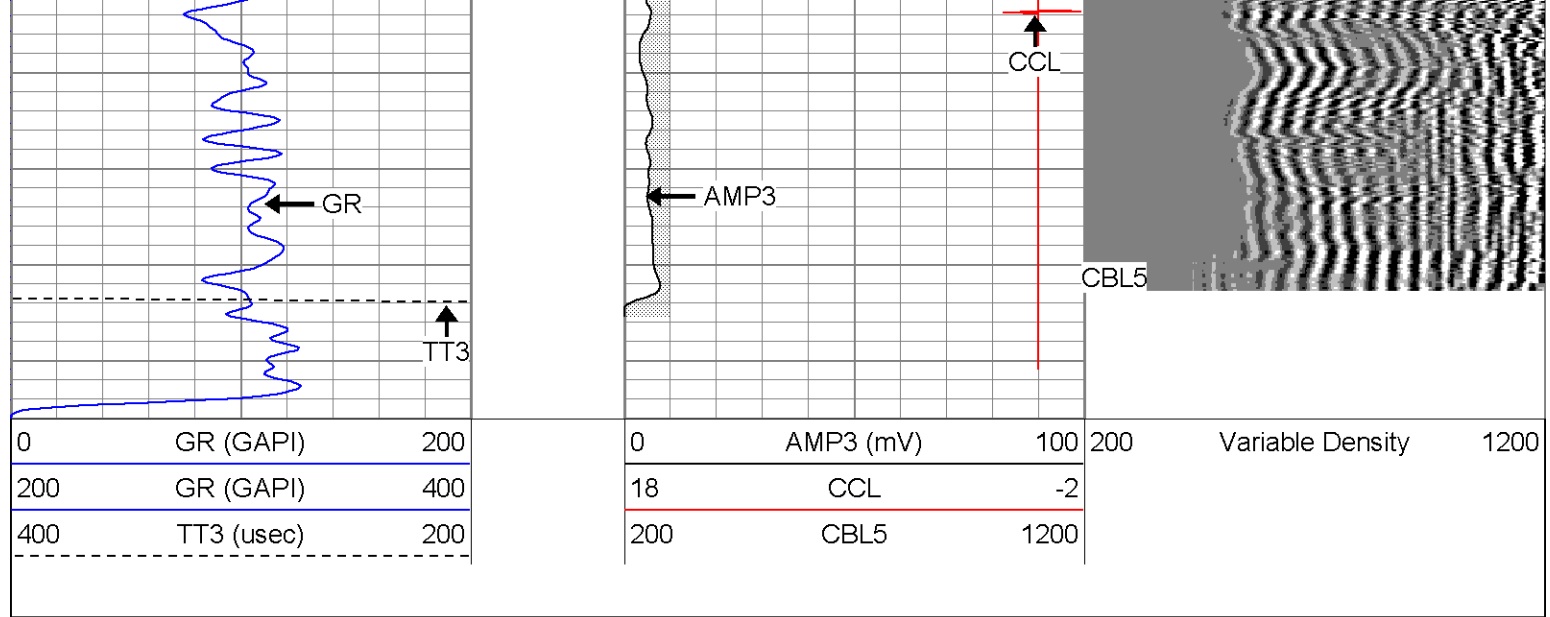




Database File: hillranch270781706b.db  
Dataset Pathname: pass1.1  
Presentation Format: cblrt  
Dataset Creation: Thu Aug 17 17:04:43 2006 by Calc Open-Cased 060407  
Charted by: Depth in Feet scaled 1:240

0	GR (GAPI)	200	0	AMP3 (mV)	100	200	Variable Density	1200
200	GR (GAPI)	400	18	CCL	-2			
400	TT3 (usec)	200	200	CBL5	1200			





### Calibration Report

Database File: hillranch270781706b.db  
 Dataset Pathname: pass1  
 Dataset Creation: Thu Aug 17 15:47:12 2006 by Log Open-Cased 060407

### Gamma Ray Calibration Report

Serial Number: SlimHole  
 Tool Model: TitanSH  
 Performed: Thu Aug 17 15:36:54 2006

Calibrator Value: 1.0 GAPI

Background Reading: 0.0 cps  
 Calibrator Reading: 1.0 cps

Sensitivity: 1.1000 GAPI/cps


### Cement Bond Log Calibration Report

Serial Number: Titan4  
 Tool Model: 4  
 Performed: Tue Aug 15 12:08:21 2006

Depth: 1054.62 ft  
 Casing Diameter: 5.5 in

	3' Spacing	5' Spacing	
Signal Zero:	0	1	mV
Calibrated Amplitude:	85	85	mV
Reading at Signal Zero:	0.00161133	0.0143555	V
Reading in Free Pipe:	1.15	1.65081	V
Gain:	74.0168	51.3306	
Offset:	-0.119265	0.263125	

Sensor	Offset (ft)	Schematic	Description	Len (ft)	OD (in)	Wt (lb)
CHD	21.02		CHD-None (0)	0.75	1.50	5.00
CENT	20.27		CENT-X (2)	3.00	1.69	25.00

WVF5	13.45		CBL-4 (Titan4)	8.15	2.25	110.00	
WVF3	12.45						
CENT	9.12			CENT-X (1)	3.00	1.69	25.00
CCL	4.99			CCL-TitanSH (SlimHole)	1.83	1.69	10.00
GR	1.43			GR-TitanSH (SlimHole)	4.28	1.69	28.00
<div>Dataset: hillranch270781706b.db: field/well/run1/pass1</div> <div>Total Length: 21.02 ft</div> <div>Total Weight: 203.00 lb</div> <div>O.D. 2.25 in</div>							