



**SUPERIOR**  
Black Lick, Pa.  
Mercer, Pa.  
Wooster, Oh.  
Cleveland, Ok.  
Trinidad, Co.

# GAMMA NEUTRON LOG

Company XTO Energy Inc.  
Well Apache Canyon 01-12  
Field Purgatorie River  
County Las Animas  
State CO

Company XTO Energy Inc.  
Well Apache Canyon 01-12  
Field Purgatorie River  
County Las Animas  
State CO

Location: API # : 05 071 09475 00  
SEC 1 TWP 34S RGE 68W  
Permanent Datum Ground Level Elevation 8109'  
Log Measured From Ground Level  
Drilling Measured From Ground Level  
Other Services  
CBL/  
PRES CONT  
Elevation  
K.B. -----  
D.F. -----  
G.L. 8109'

Date	3/24/08
Run Number	one
Depth Driller	2235'
Depth Logger	2144'
Bottom Logged Interval	2140'
Top Log Interval	400'
Open Hole Size	7 7/8"
Type Fluid	water
Density / Viscosity	///
Max. Recorded Temp.	128F
Estimated Cement Top	Surf.
Time Well Ready	2:00
Time Logger on Bottom	2:10
Equipment Number	0703
Location	Trinidad
Recorded By	Worley
Witnessed By	Mr. Dominguez
Borehole Record	
Run Number	Bit From To Size Weight From To
Casing Record	Size Wgt/Ft Top Bottom
Surface String	8 5/8" 00
Prot. String	5 1/2" 00 NA
Production String	
Liner	

<<< Fold Here >>>

All interpretations are opinions based on inferences from electrical or other measurements and we cannot and do not guarantee the accuracy or correctness of any interpretation, and we shall not, except in the case of gross or willful negligence on our part, be liable or responsible for any loss, costs, damages, or expenses incurred or sustained by anyone resulting from any interpretation made by any of our officers, agents or employees. These interpretations are also subject to our general terms and conditions set out in our current Price Schedule.

## Comments

First Bosque entrance, right at Alamosito Canyon, stay on main road,  
well is on right side of road just before Alamosito Hill.



**SUPERIOR**

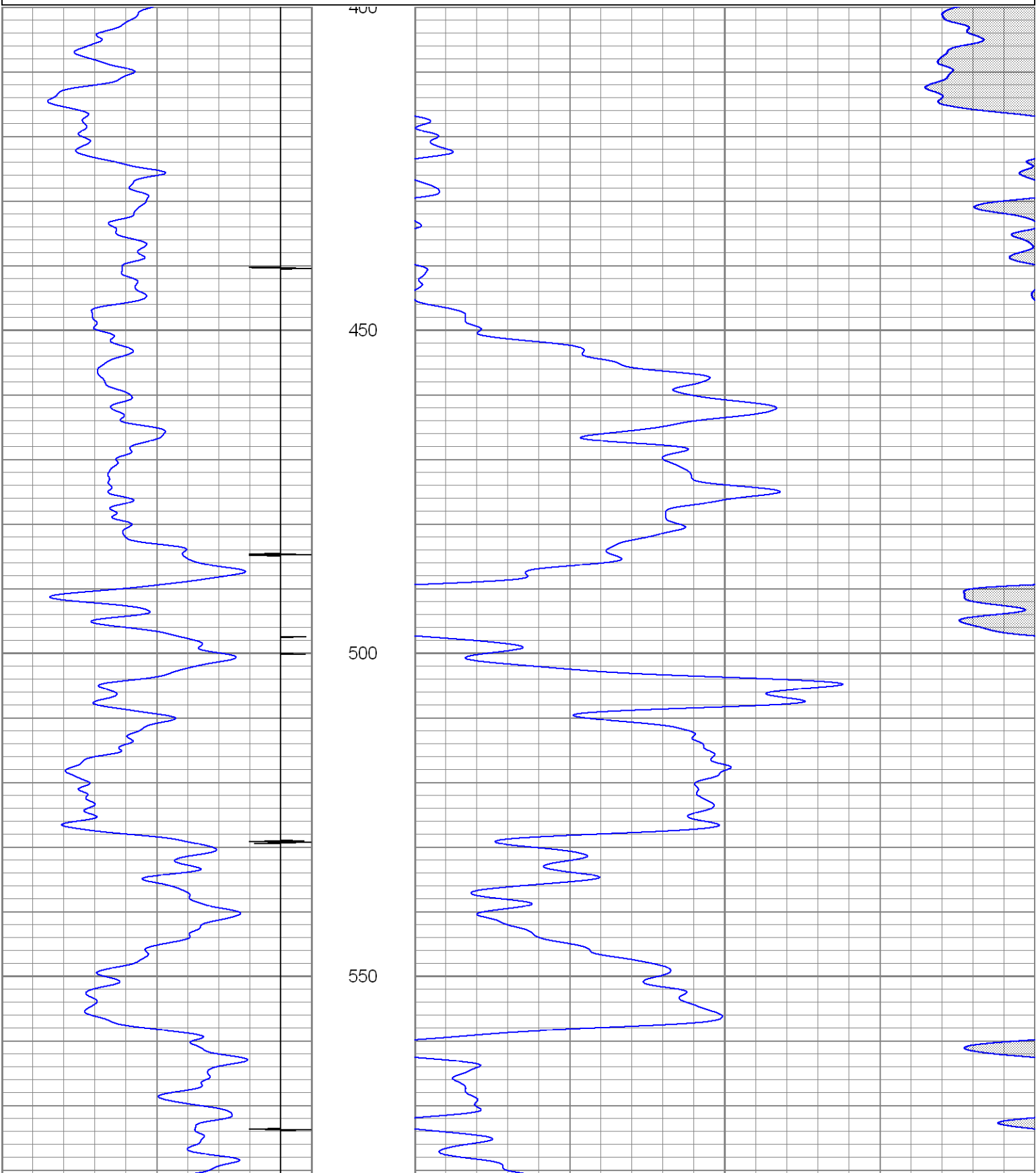
Black Lick, Pa.  
Mercer, Pa.  
Wooster, Oh.  
Cleveland, Ok.  
Trinidad, Co.

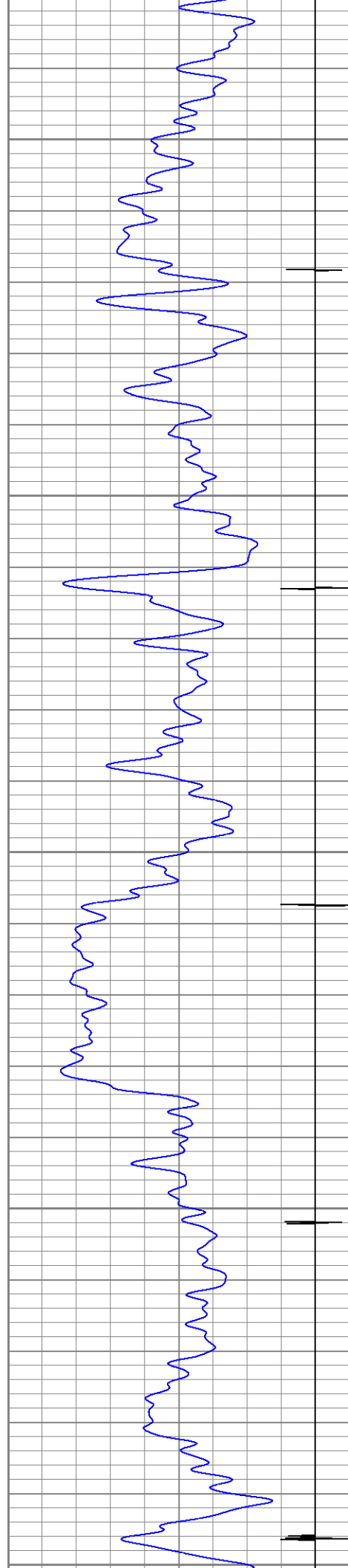
# Main Pass

Database File: ac01-12gnb32408.db  
Dataset Pathname: pass3.4  
Presentation Format: gr-n-ccl  
Dataset Creation: Tue Mar 25 07:18:20 2008 by Calc Open-Cased 071220  
Charted by: Depth in Feet scaled 1:240

18	CCL	-2
0	GR (GAPI)	200
200	GR (GAPI)	400

30	NPOR (pu)	-10
70	NPOR (pu)	30





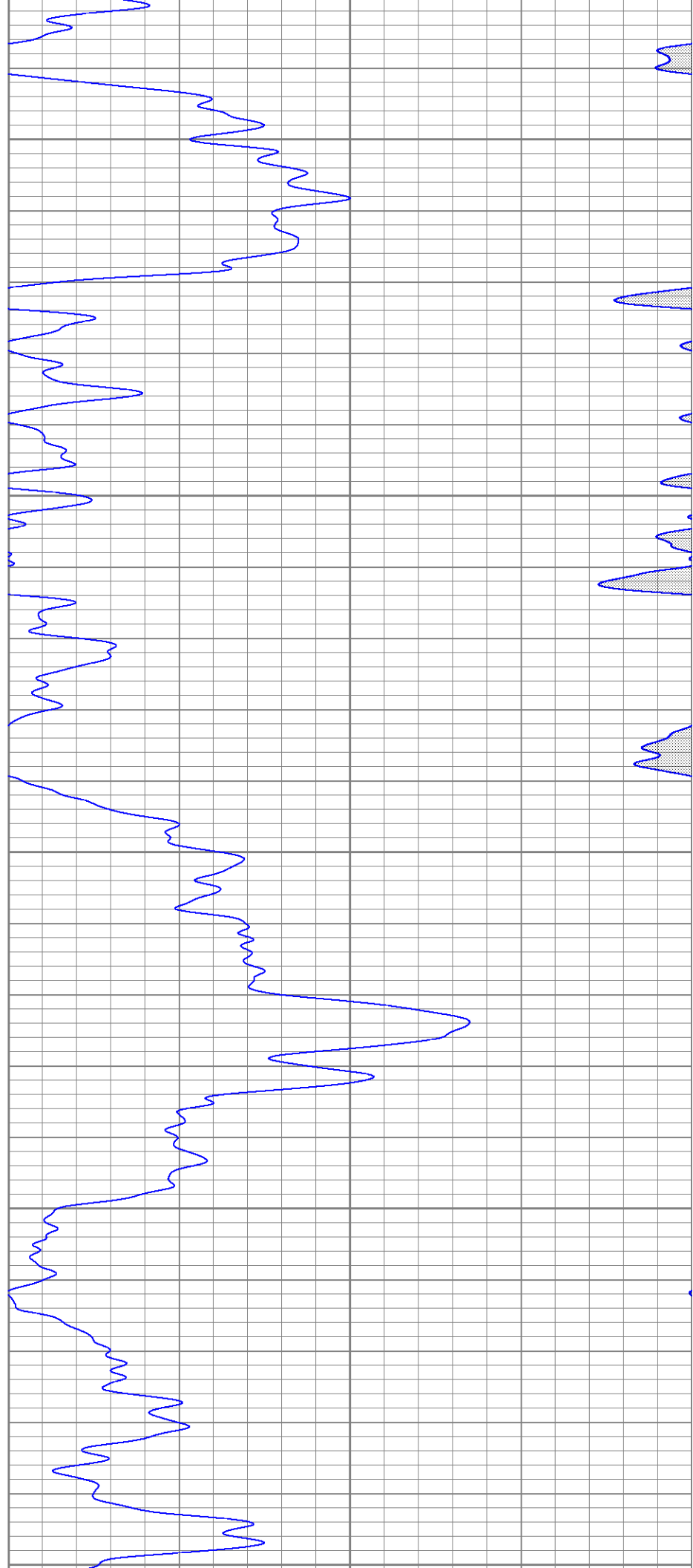
600

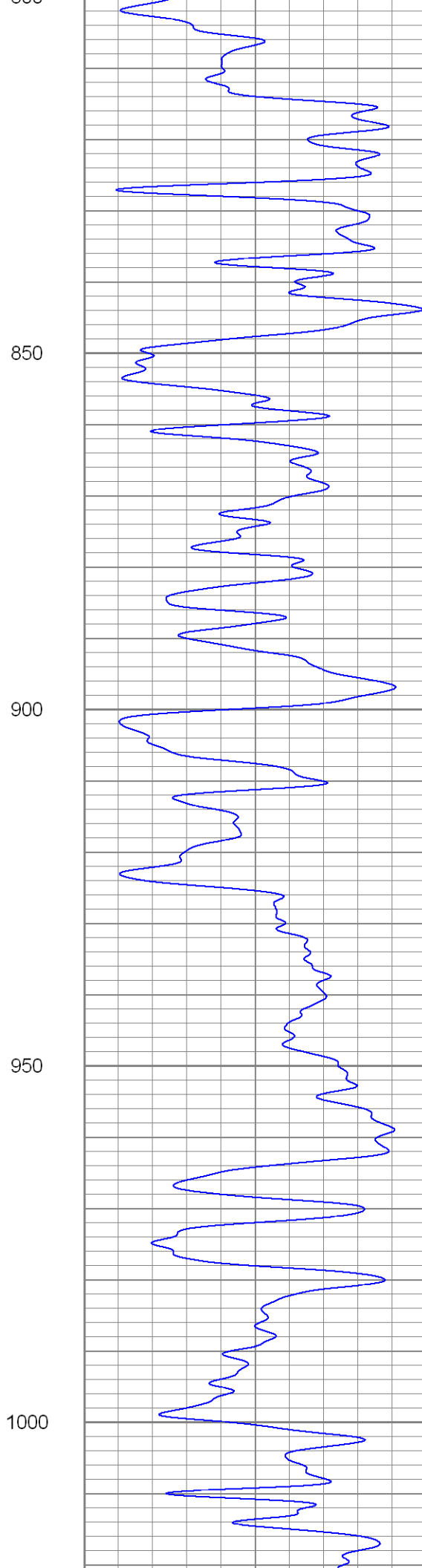
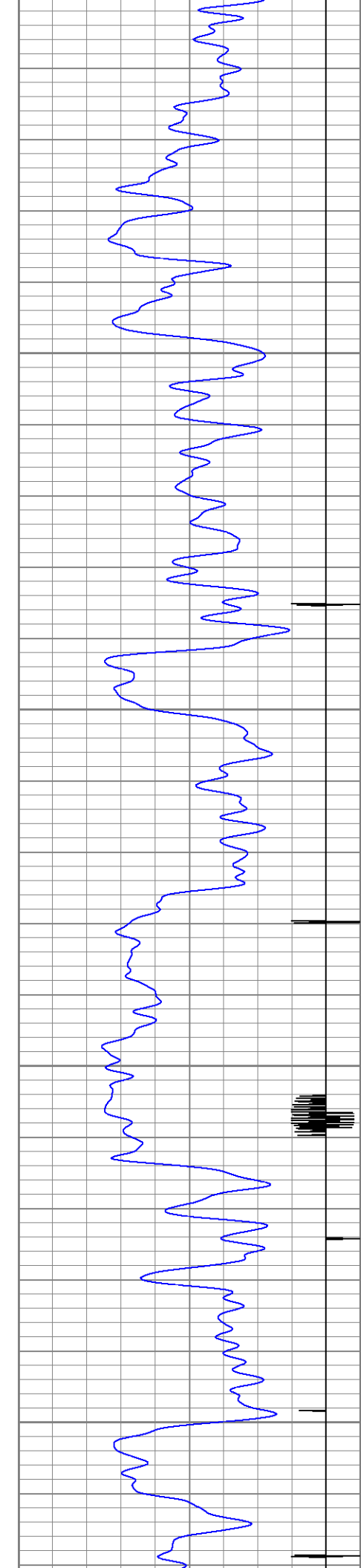
650

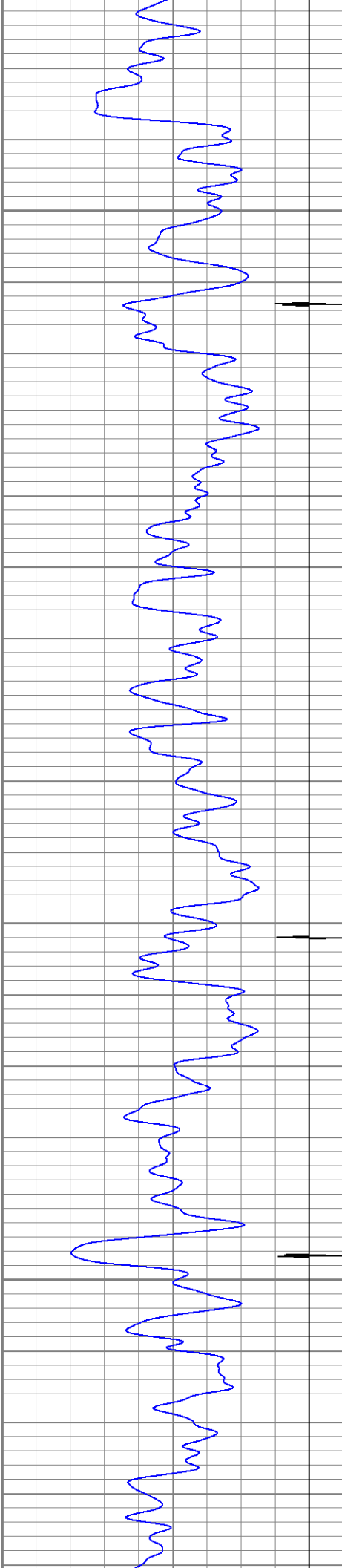
700

750

800





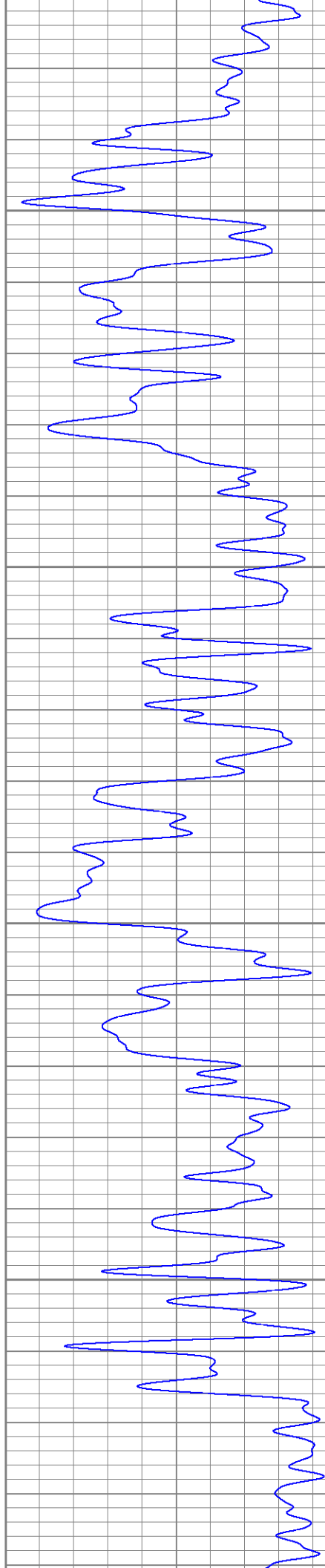


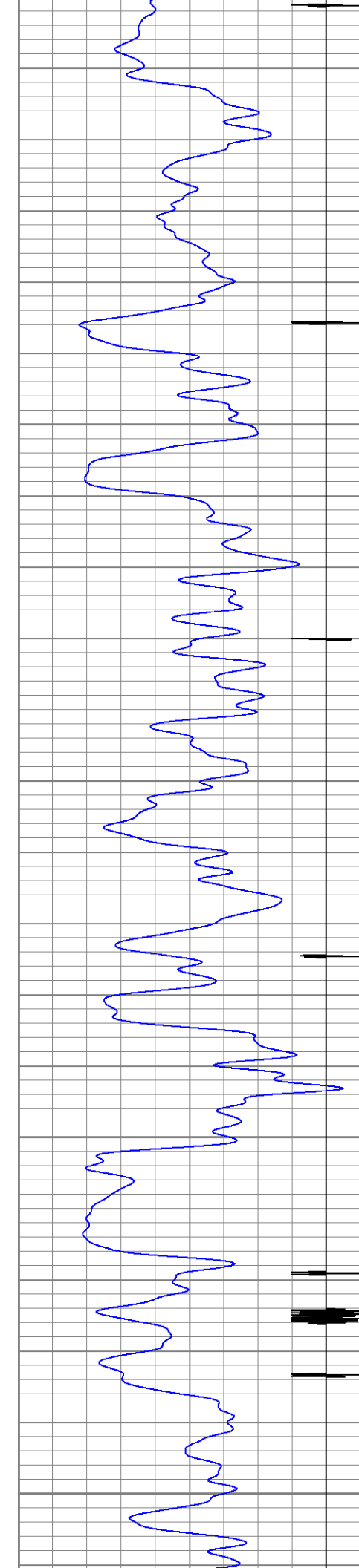
1050

1100

1150

1200





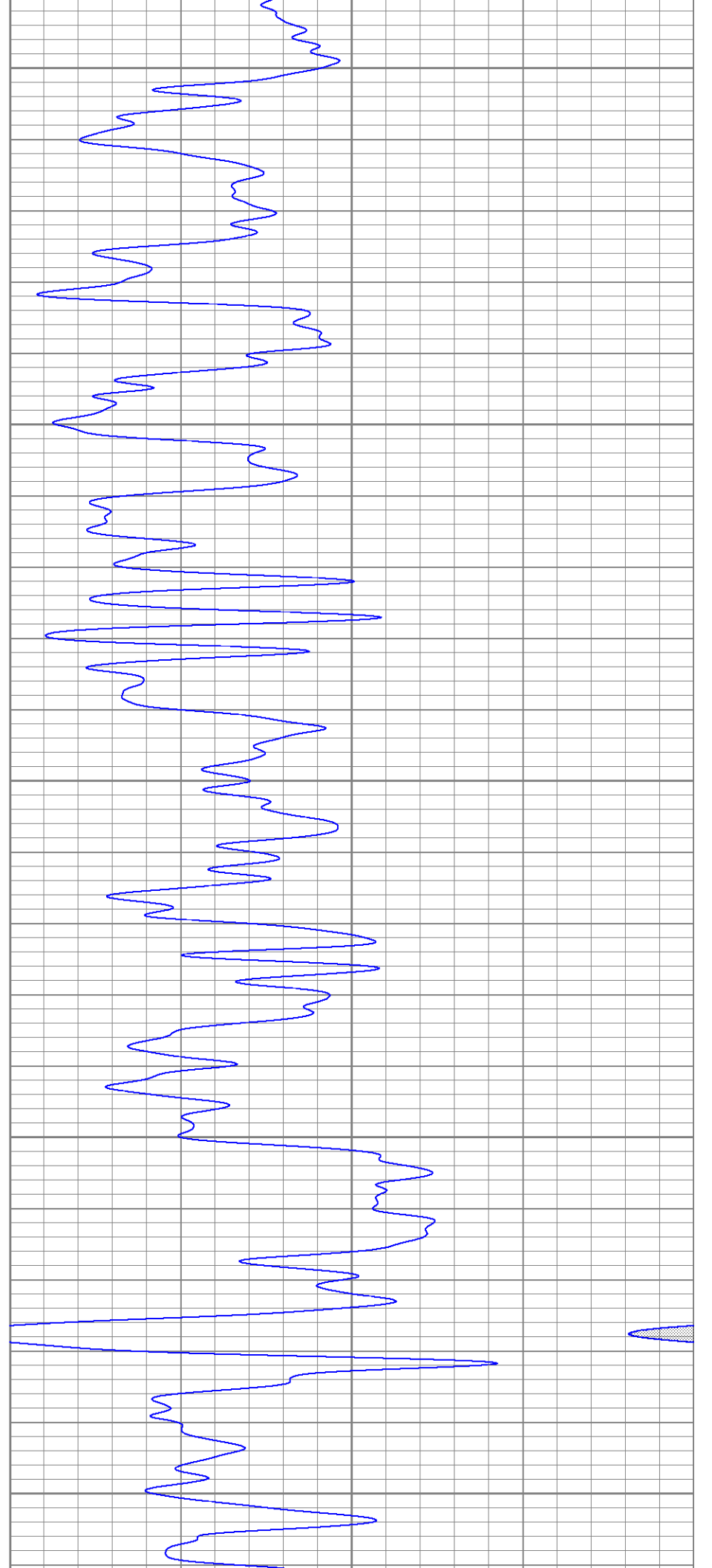
1250

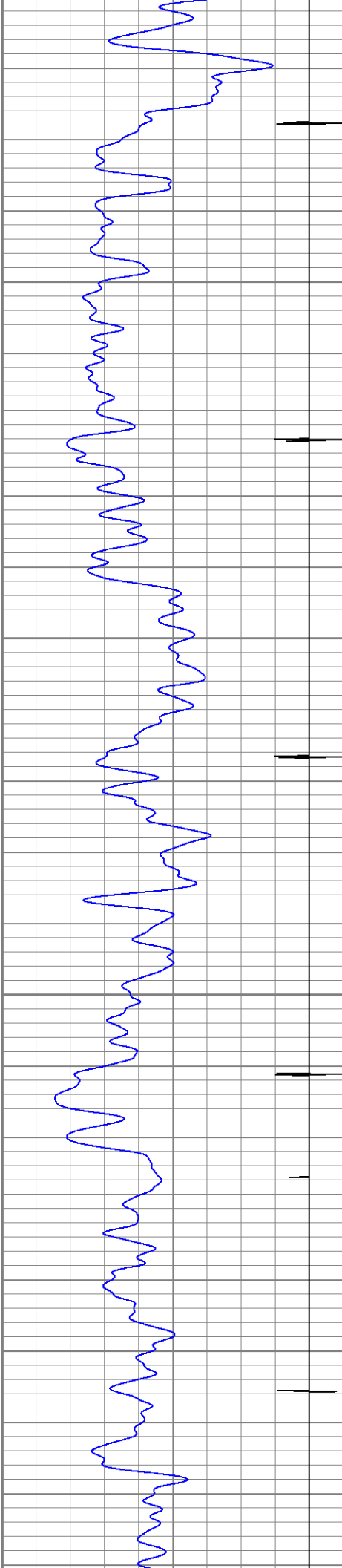
1300

1350

1400

1450



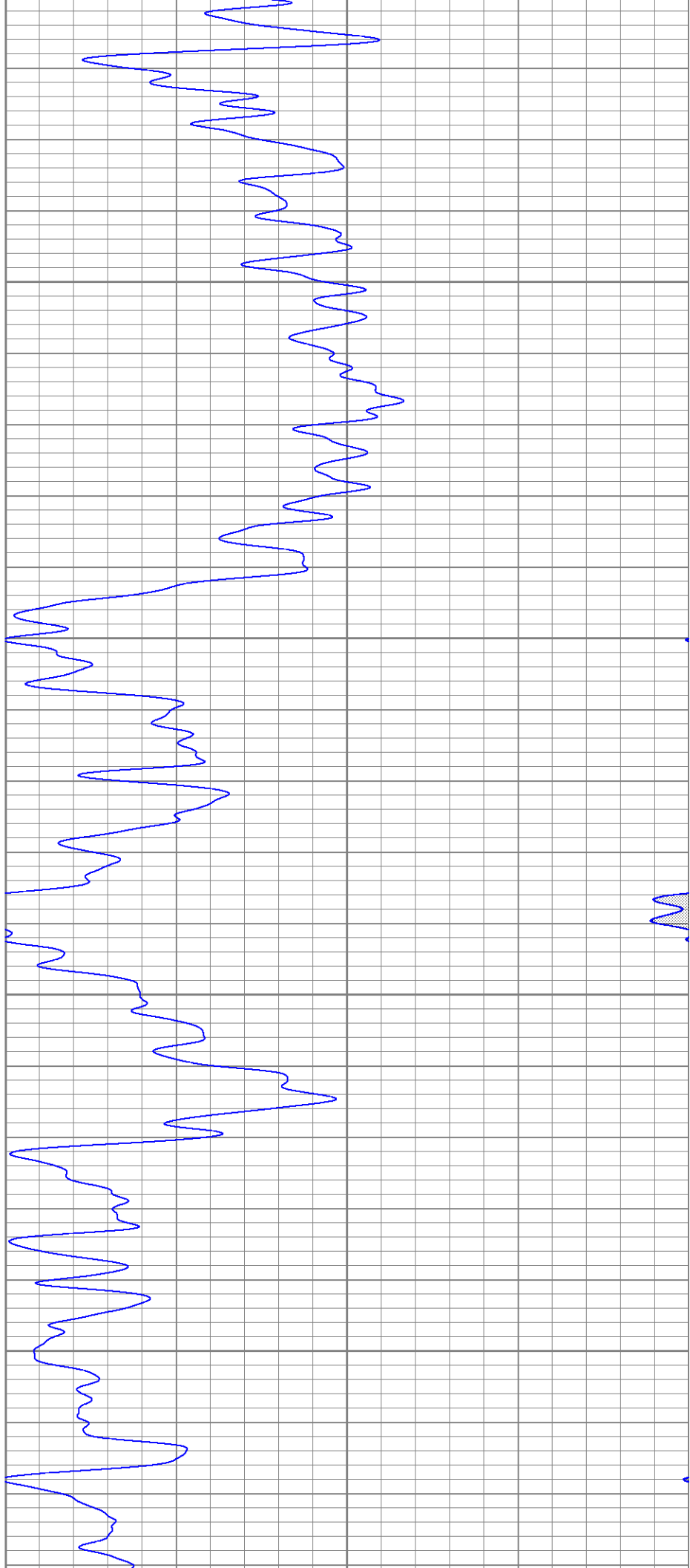


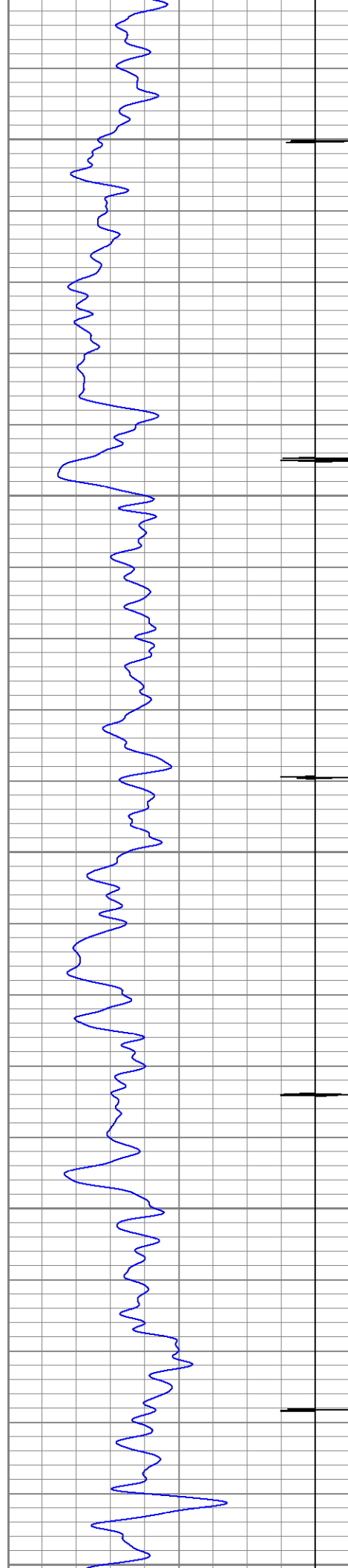
1500

1550

1600

1650





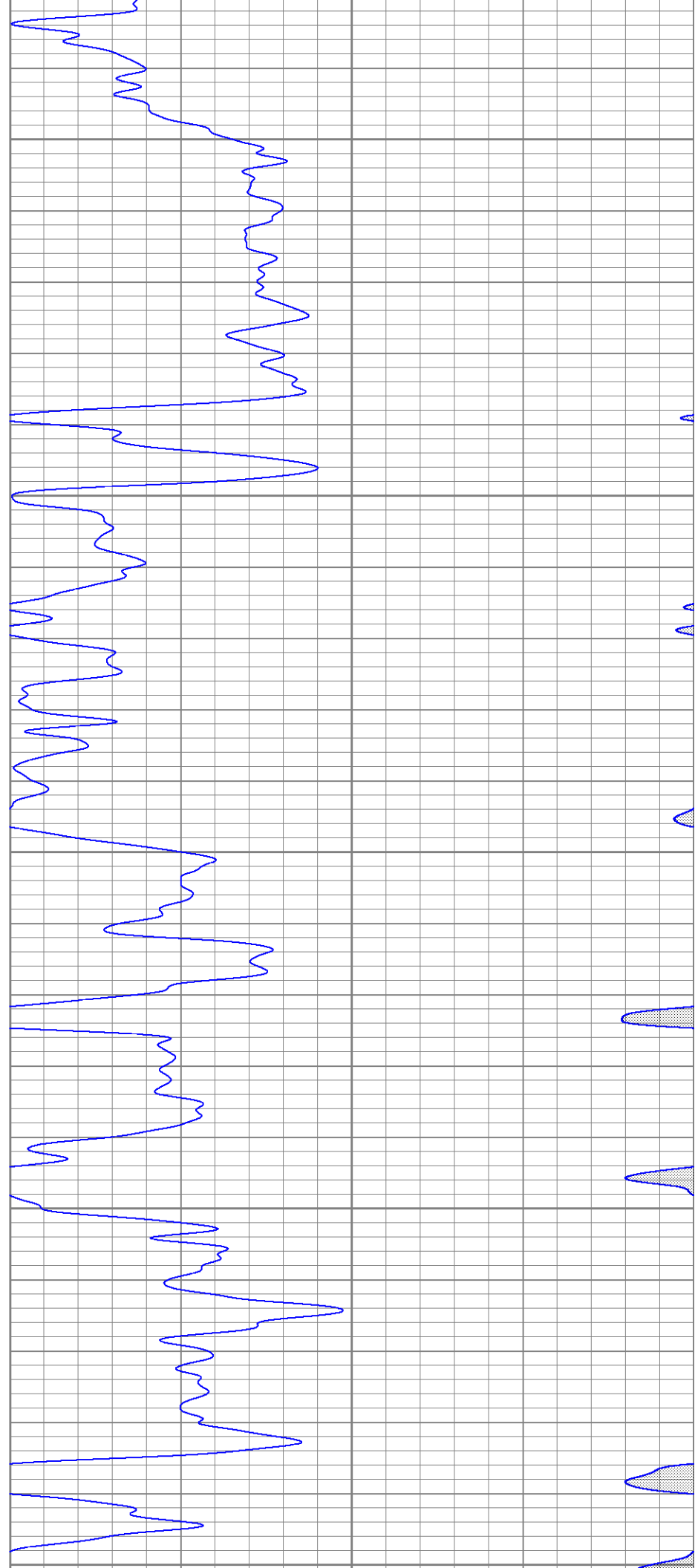
1700

1750

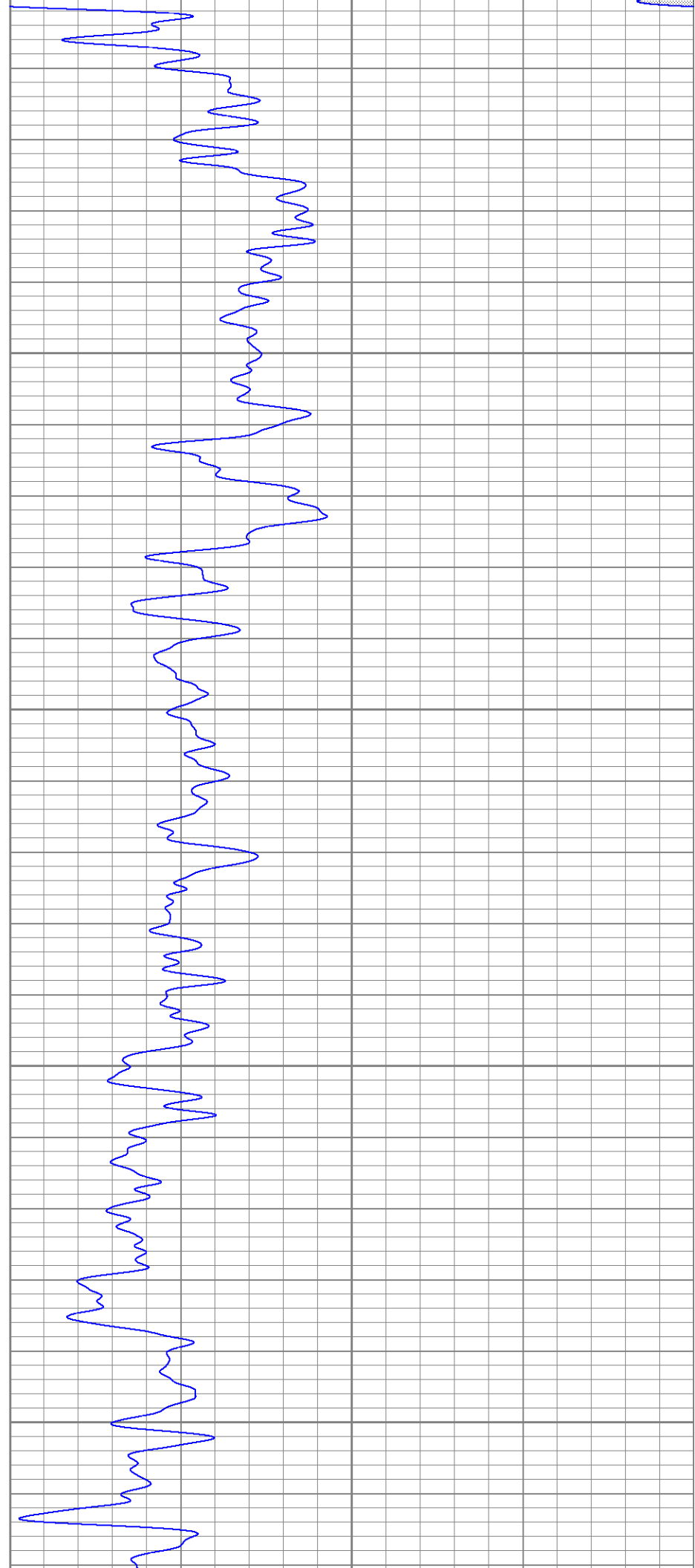
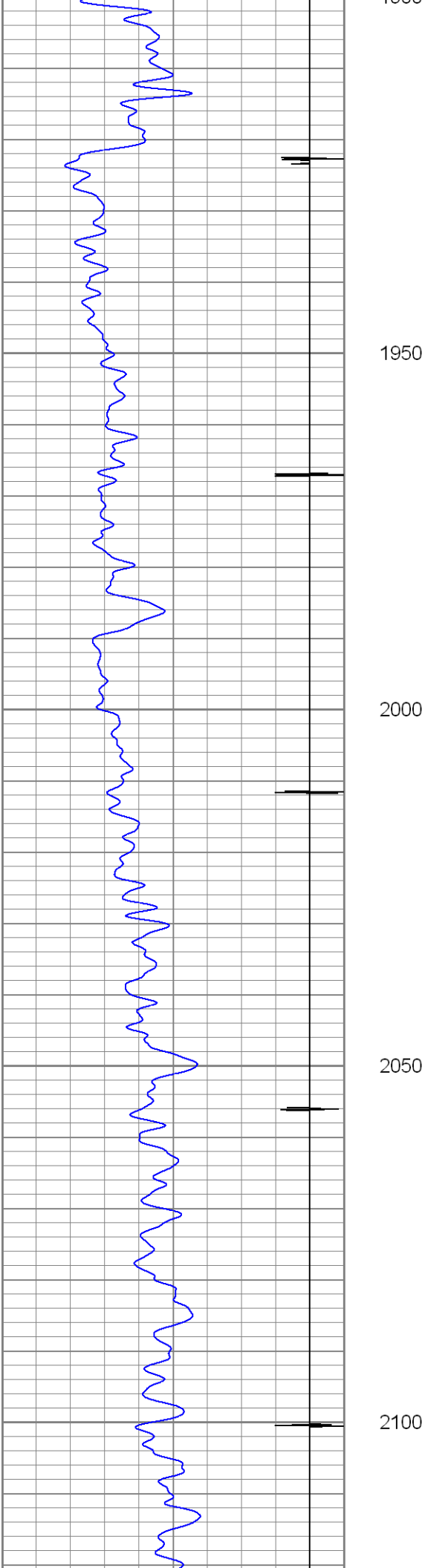
1800

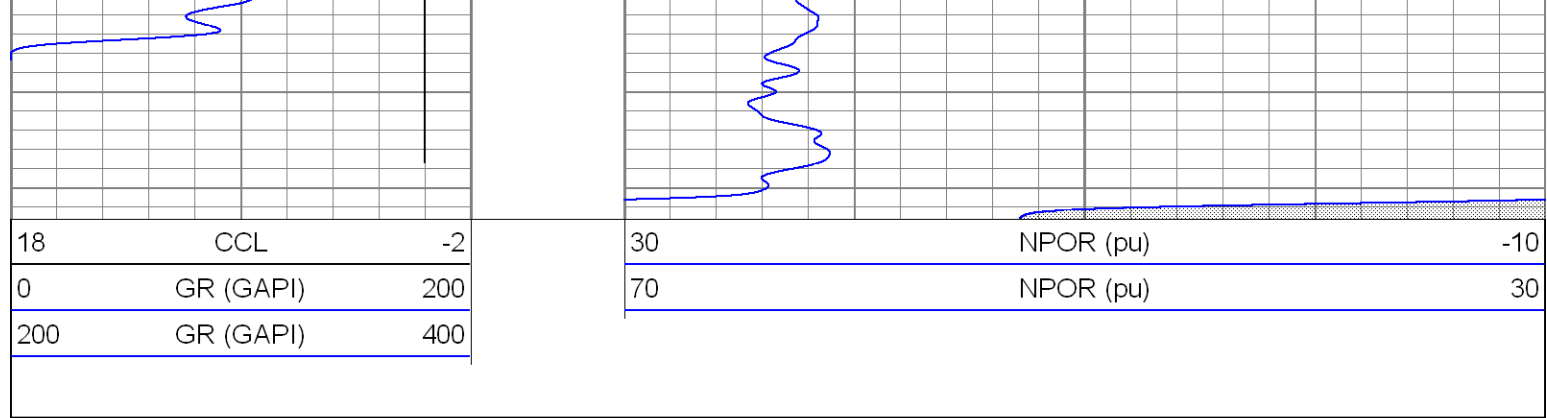
1850

1900







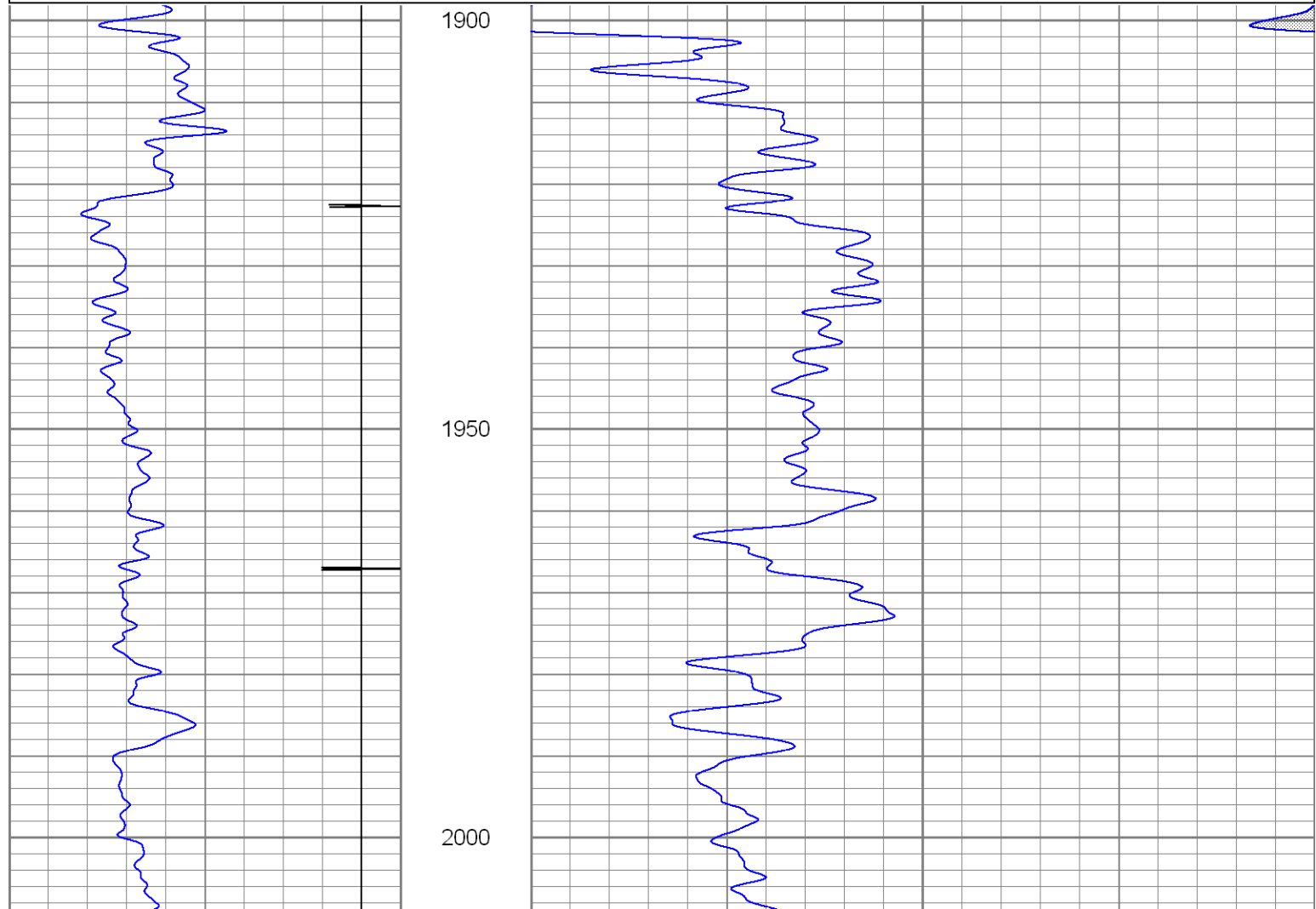
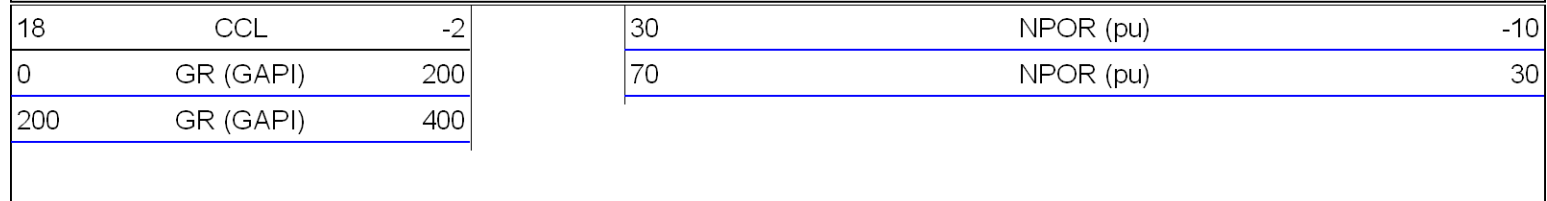


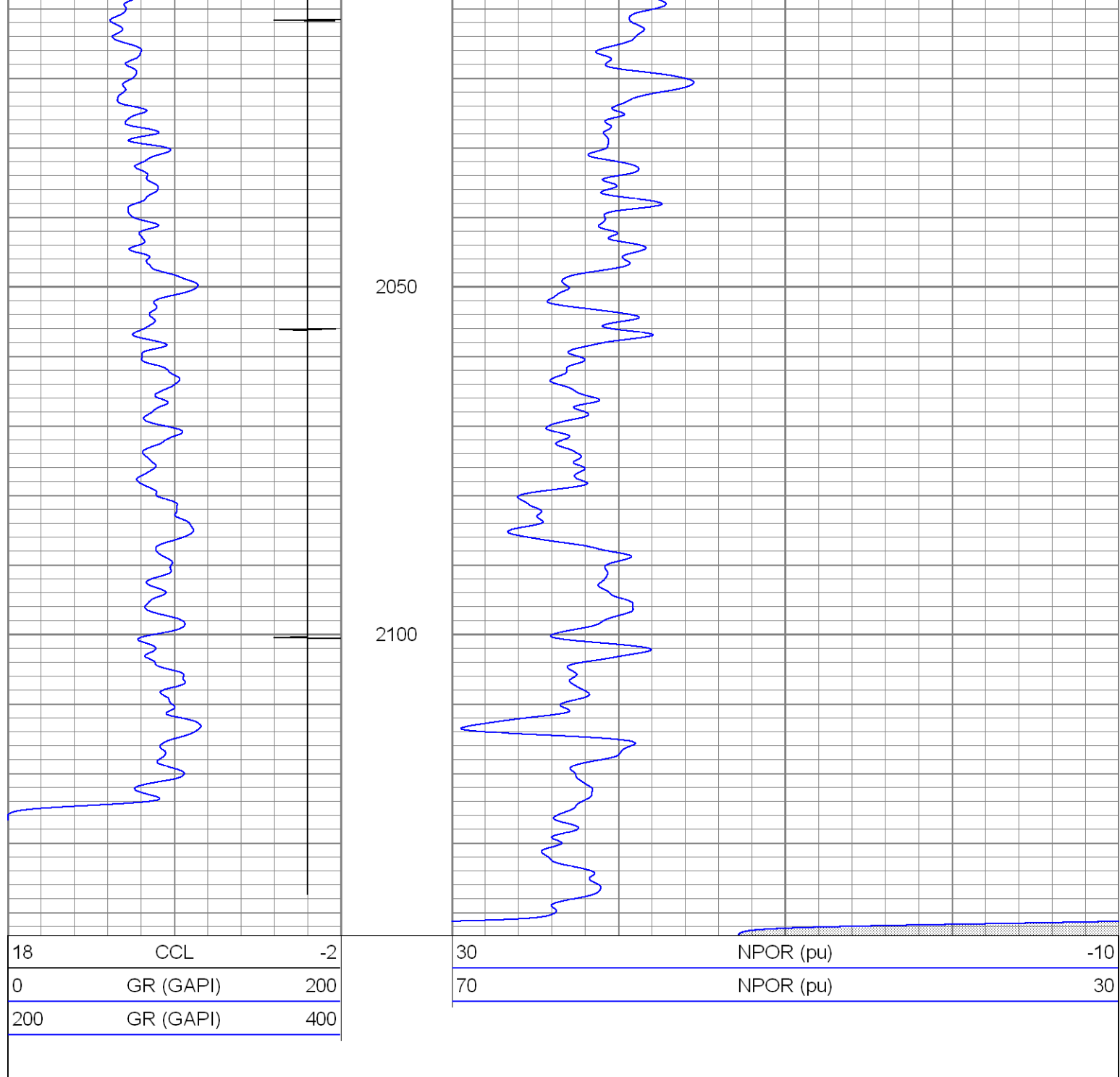


**SUPERIOR**  
Black Lick, Pa.  
Mercer, Pa.  
Wooster, Oh.  
Cleveland, Ok.  
Trinidad, Co.

# Repeat Section

Database File: ac01-12gnb32408.db  
 Dataset Pathname: pass2.2  
 Presentation Format: gr-n-ccl  
 Dataset Creation: Tue Mar 25 07:40:34 2008 by Calc Open-Cased 071220  
 Charted by: Depth in Feet scaled 1:240





### Calibration Report

Database File: ac01-12gnb32408.db  
Dataset Pathname: pass2.2  
Dataset Creation: Tue Mar 25 07:40:34 2008 by Calc Open-Cased 071220

### Neutron Calibration Report

Serial Number: Titan  
Tool Model: T  
Performed: Mon Mar 24 13:19:34 2008

Calibrator Value: 1200 NAPI

Calibrator Reading: 1700 cps

Sensitivity: 0.705882 NAPI/cps

Serial Number:	Titan2		
Tool Model:	T2		
Performed:	Mon Mar 24 13:20:54 2008		

Depth:	371.336	ft
Casing Diameter:	5.5	in

3' Spacing	5' Spacing
------------	------------

Signal Zero:	0	0	mV
Calibrated Amplitude:	85	85	mV
Reading at Signal Zero:	-0.04	-0.03	V
Reading in Free Pipe:	2.05	1.75	V

Gain:	40.6699	47.7528
Offset:	1.62679	1.43258

#### Gamma Ray Calibration Report

Serial Number:	TITAN2	
Tool Model:	T2	
Performed:	Mon Mar 24 14:31:46 2008	

Calibrator Value:	1.0	GAPI
-------------------	-----	------

Background Reading:	0.0	cps
Calibrator Reading:	1.0	cps

Sensitivity:	1.3500	GAPI/cps
--------------	--------	----------