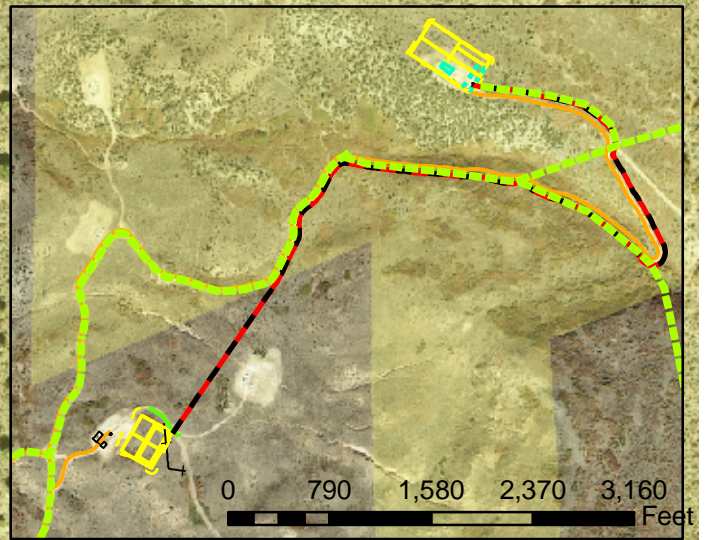


Geologist Information

General: New location, 19 new wells (drill 4 now)
 Ownership: Fed Surface, Fed Minerals
 SUA Status: N/A
 Spacing Units: 1 spacing unit
 Adjacent Owners: BLM



Plan of Development

Access: Use existing access.
 Drilling: Conventional rig first visit/ Efficiency rig second visit
 Cuttings: In reserve pit on location.
 SIMOPS: No for conventional/Yes for efficiency
 Completion: Frac on pad for conventional; Frac from Flat Iron Mesa frac pad (near RU 11-7).
 Flowback: On pad for conventional, Frac pad for efficiency.
 Prod Equip: Production equipment to be off south East side of pad in a 60'x 200' area.
 Pipeline: ETC will gather gas.



Legend

- ETC Proposed Pipeline
- Existing Well
- BLM Surface
- Proposed Daylight Line
- Proposed Frac Line
- Proposed Pad or Pit
- Existing Road
- Existing Pipeline
- Proposed Production Equipment Area
- Existing Fence
- Existing Production Equipment

Williams Production RMT

RU 34-6 Plan of Development
 T7S R93W, Section 6



Date Prepared: July 6, 2009