



SUPERIOR
Black Lick, Pa.
Mercer, Pa.
Wooster, Oh.
Cleveland, Ok.
Trinidad, Co.

CEMENT BOND GAMMA RAY LOG

Company		XTO Energy Inc.					
Well		Apache Canyon 31-10					
Field		Purgatorie River					
County		Las Animas					
State		CO					
Location:		API # : 05 071 09115 00 2444' FSL & 1644' FEL					
SEC 31 TWP 33S RGE 67W		Other Services Pressure Control					
Permanent Datum		Ground Level	Elevation 7664'				
Log Measured From		Ground Level					
Drilling Measured From		Ground Level					
Elevation		K.B. ----- D.F. ----- G.L. 7664'					
Date	3-22-07						
Run Number	One						
Depth Driller	2240'						
Depth Logger	2168'						
Bottom Logged Interval	2168'						
Top Log Interval	Surface						
Open Hole Size	7 7/8"						
Type Fluid	Water						
Density / Viscosity	///						
Max. Recorded Temp.	111F						
Estimated Cement Top	88'						
Time Well Ready	Portable Mast						
Time Logger on Bottom	1:00PM						
Equipment Number	T0698						
Location	Trinidad						
Recorded By	J Sinerros						
Witnessed By	Mr. Terry Maxwell						
Borehole Record		Tubing Record					
Run Number	Bit	From	To	Size	Weight	From	To
Casing Record	Size	Wgt/Ft	Top	Bottom			
Surface String	8 5/8"		00	500'			
Prot. String							
Production String	5 1/2"		00	N/A			
Liner							

<<< Fold Here >>>

All interpretations are opinions based on inferences from electrical or other measurements and we cannot and do not guarantee the accuracy or correctness of any interpretation, and we shall not, except in the case of gross or willful negligence on our part, be liable or responsible for any loss, costs, damages, or expenses incurred or sustained by anyone resulting from any interpretation made by any of our officers, agents or employees. These interpretations are also subject to our general terms and conditions set out in our current Price Schedule.

Comments

Turn at Bosque 4 mi.past weston, up Ciruela Canyon, stay left at windmill, stay on main road, second location.

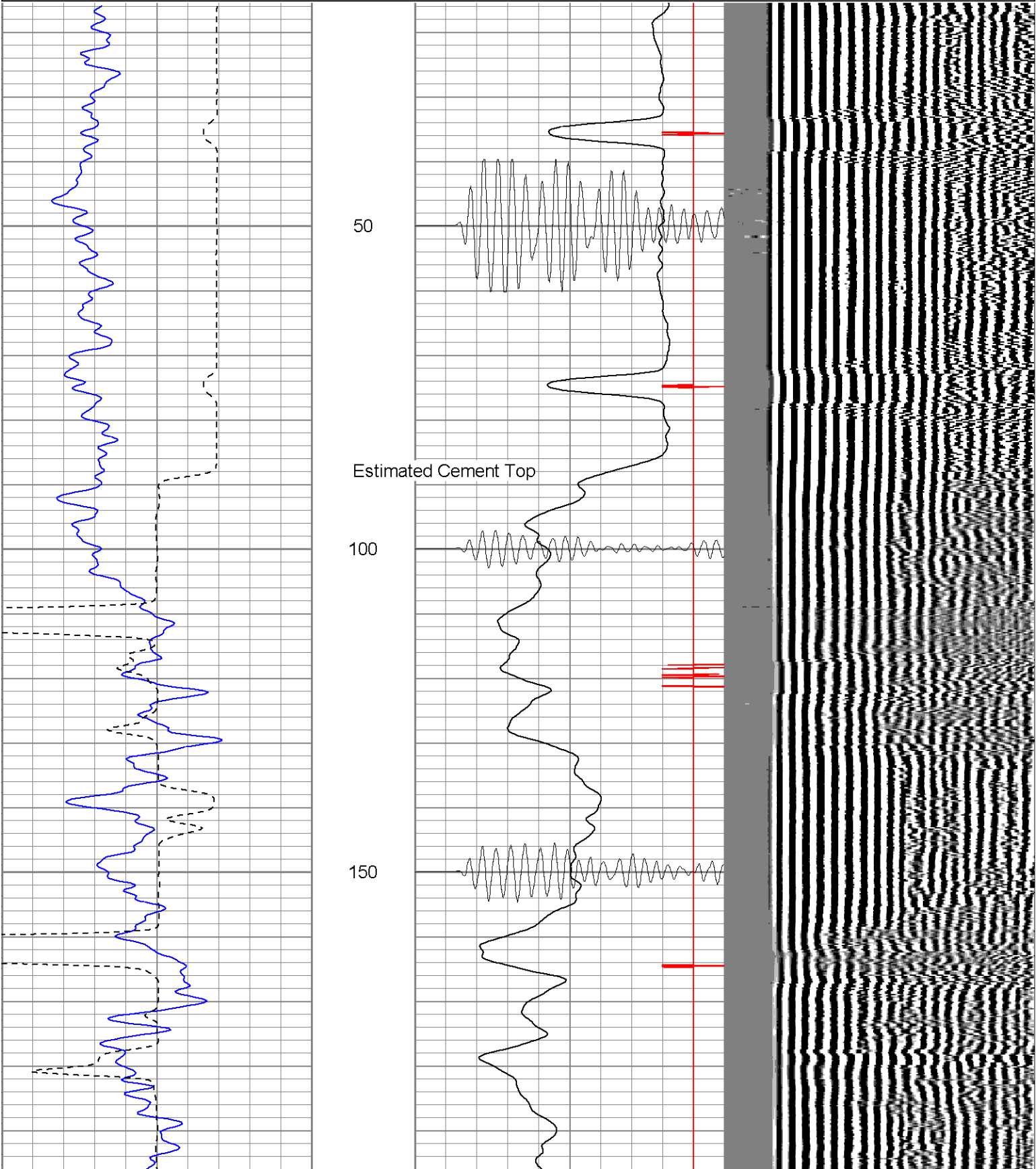


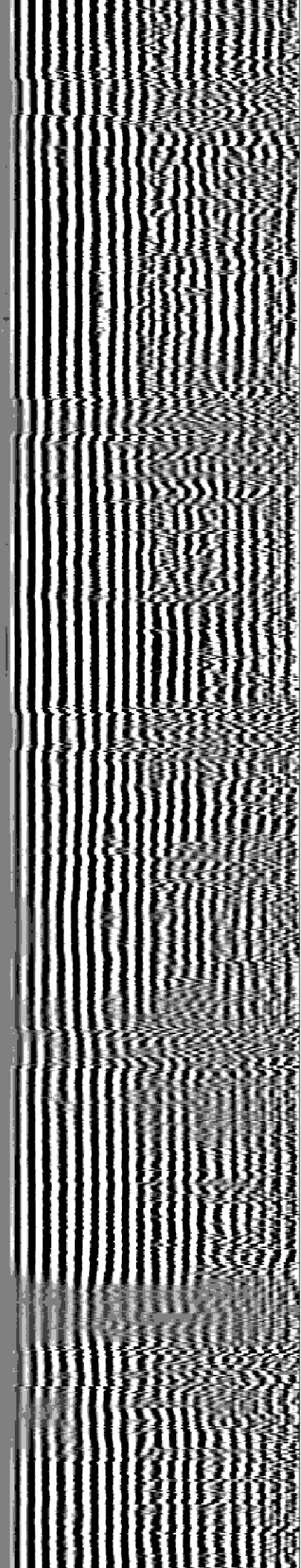
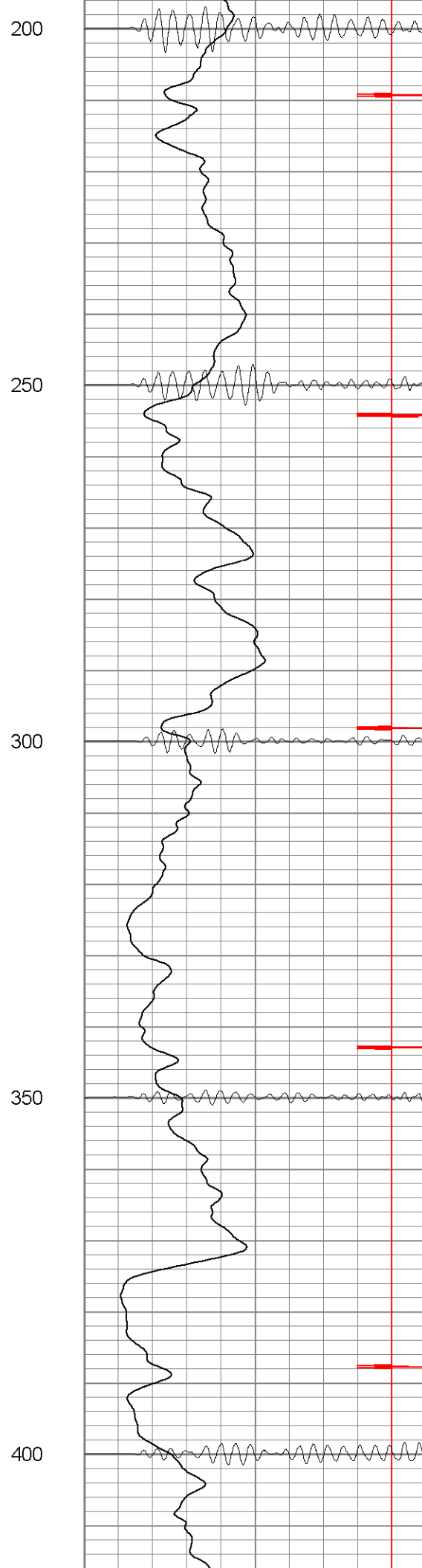
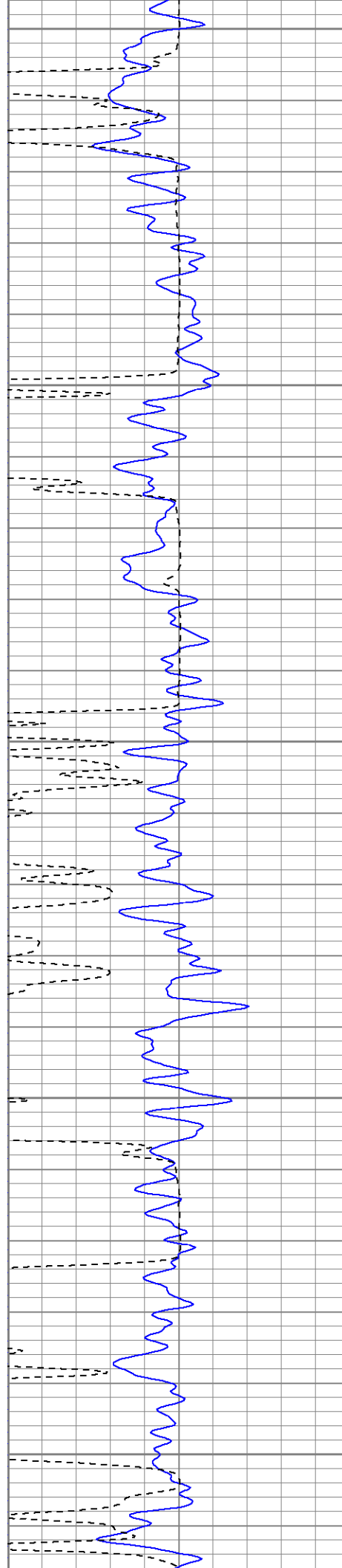
SUPERIOR

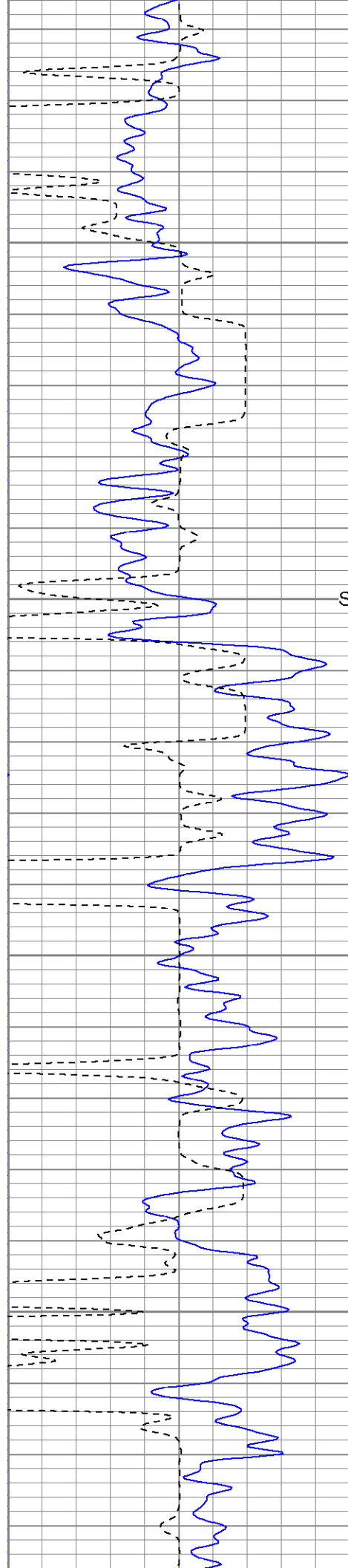
Black Lick, Pa.
Mercer, Pa.
Wooster, Oh.
Cleveland, Ok.
Trinidad, Co.

Main Pass (1000PSI)

0	GR (GAPI)	200	0	AMP3 (mV)	100	200	Variable Density	1200
200	GR (GAPI)	400	18	CCL	-2			
400	TT3 (usec)	200	200	CBL5	1200			





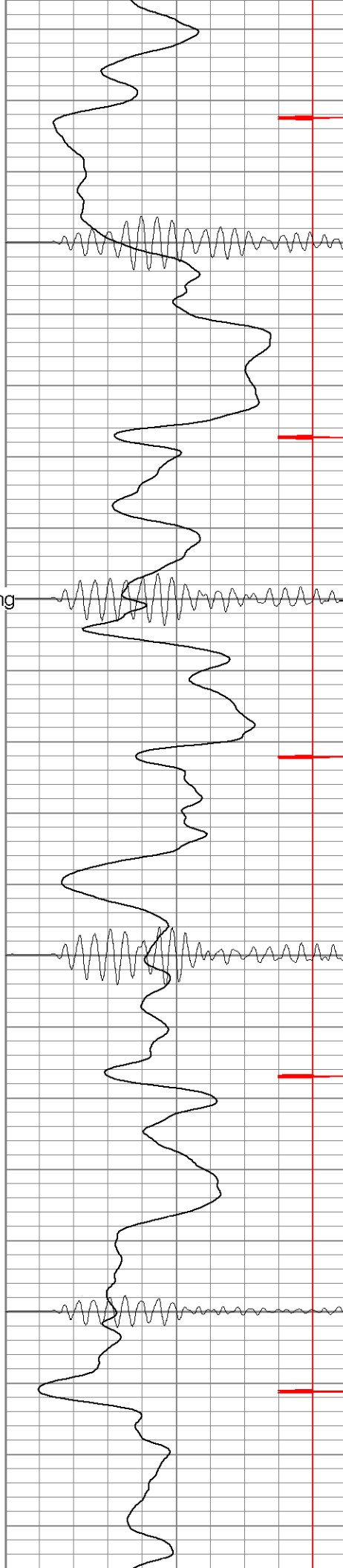


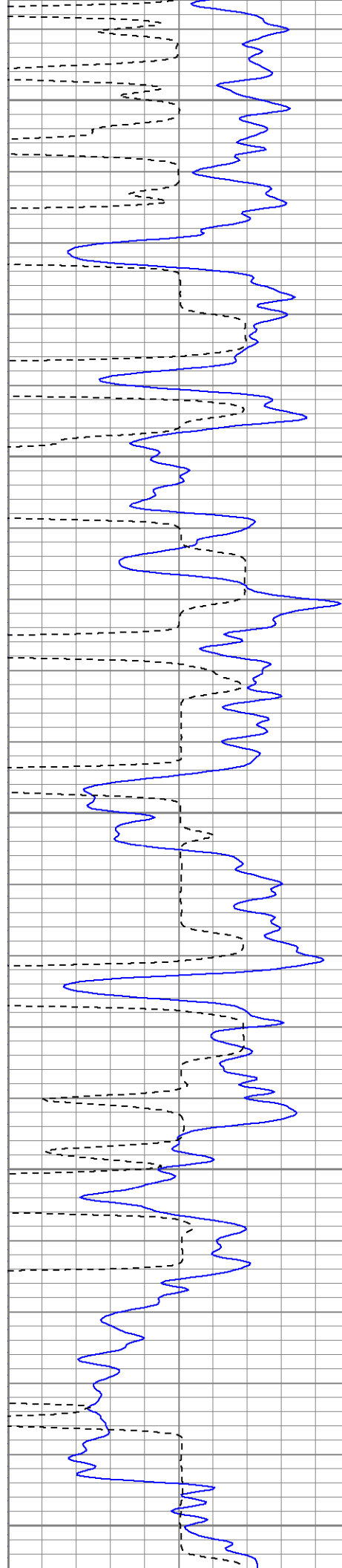
450

Surface Casing

550

600





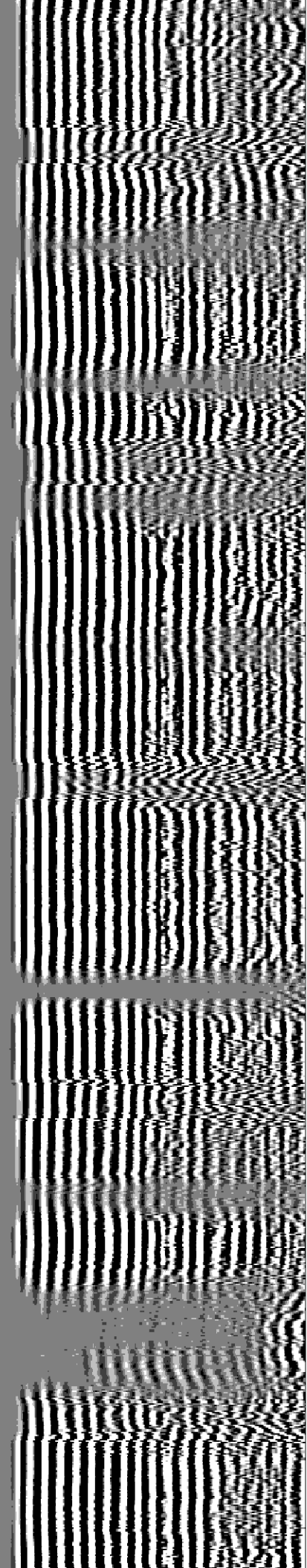
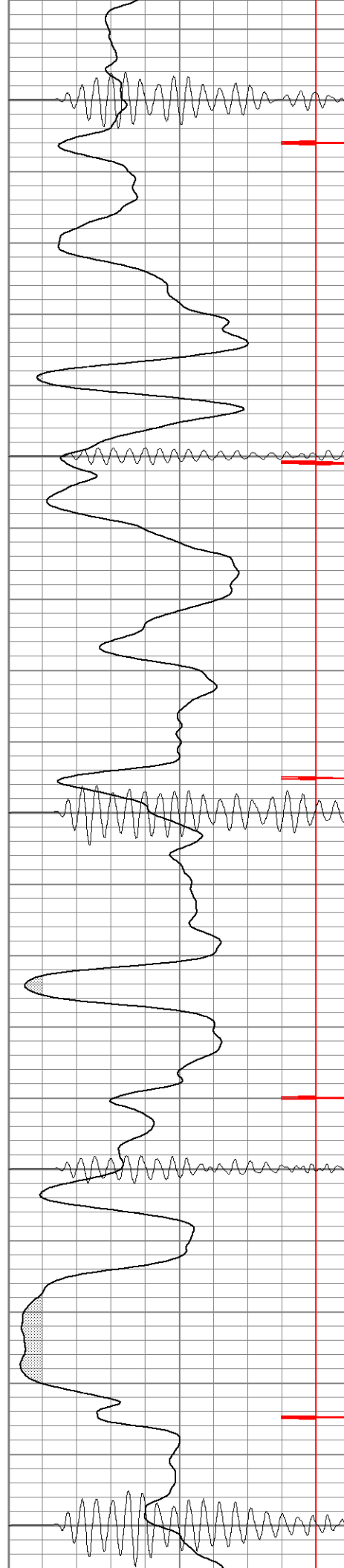
650

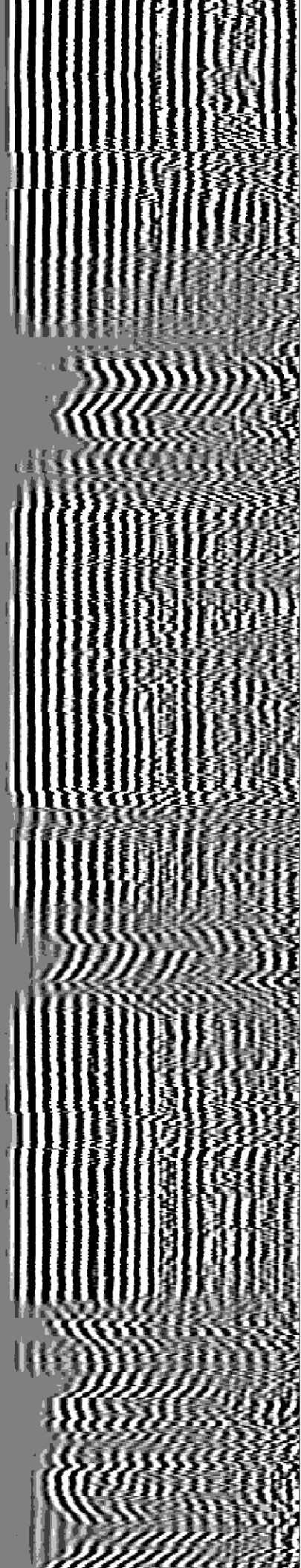
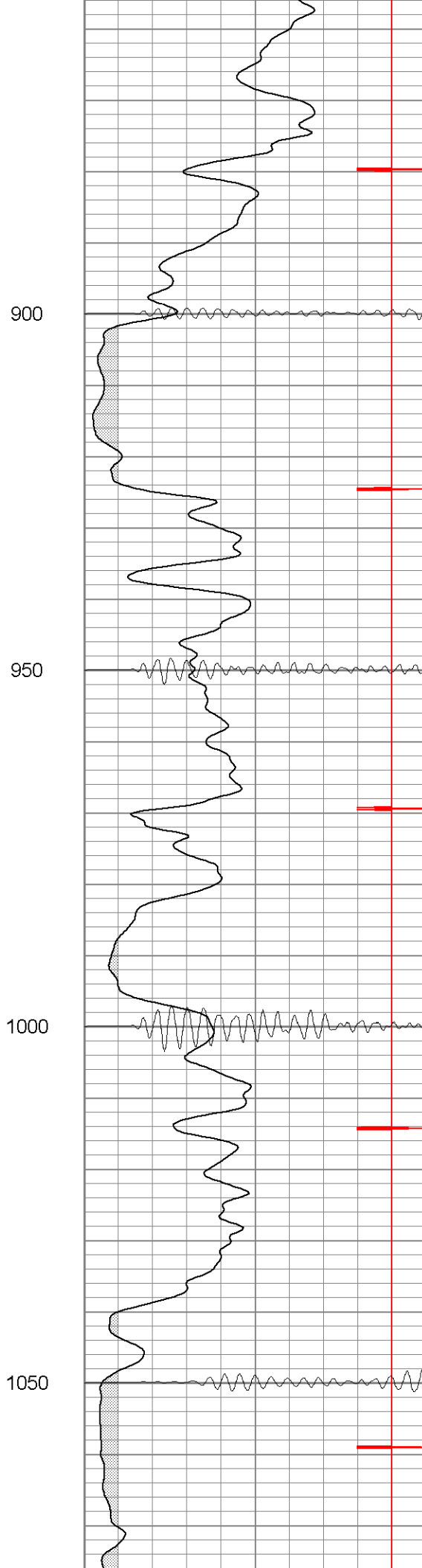
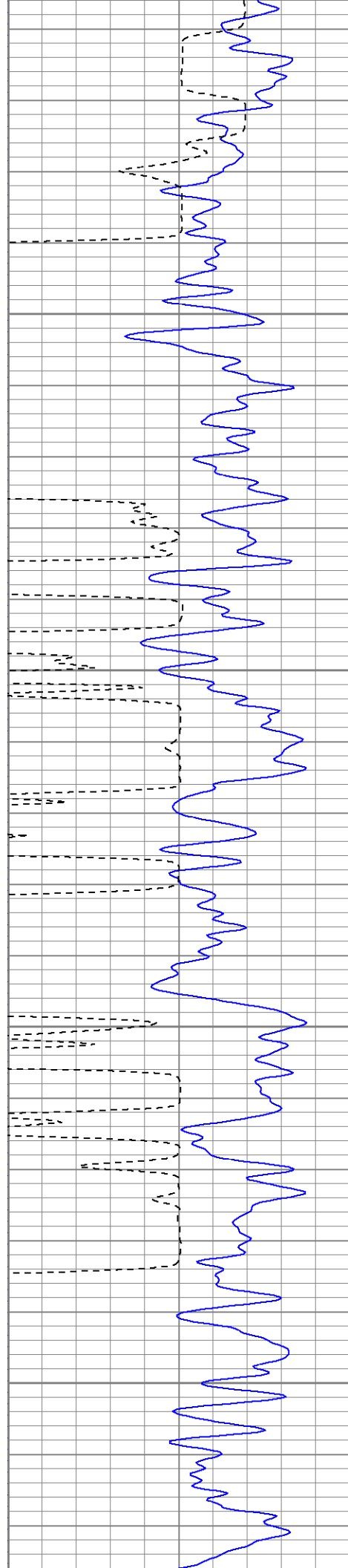
700

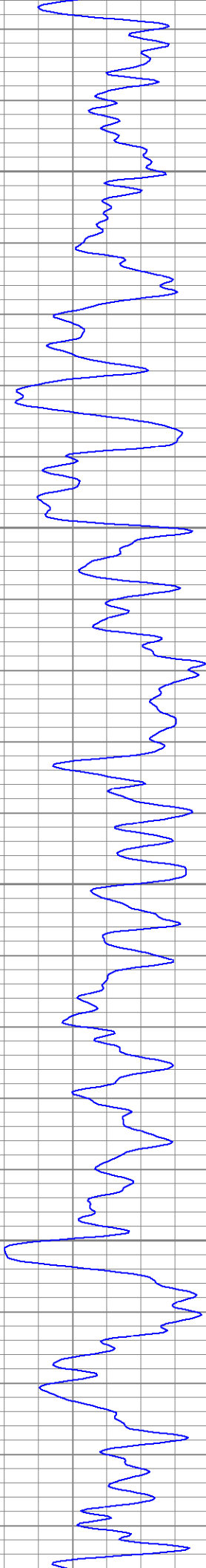
750

800

850





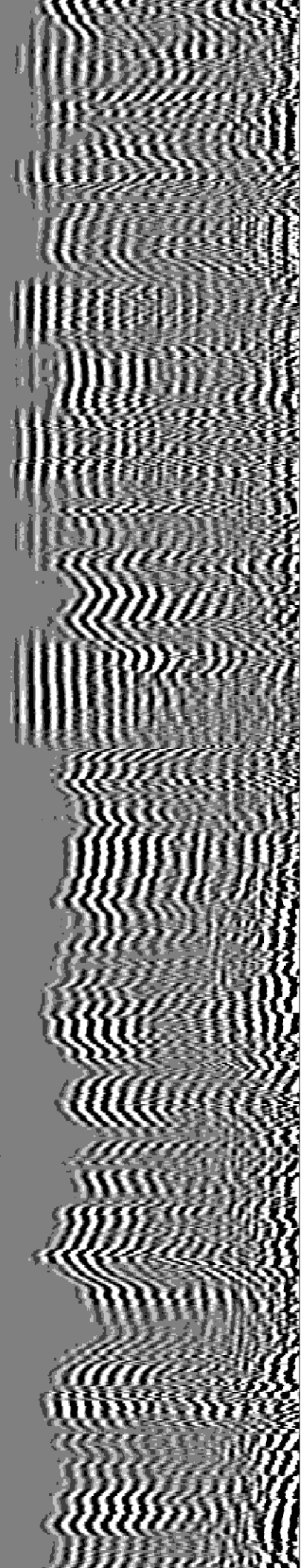


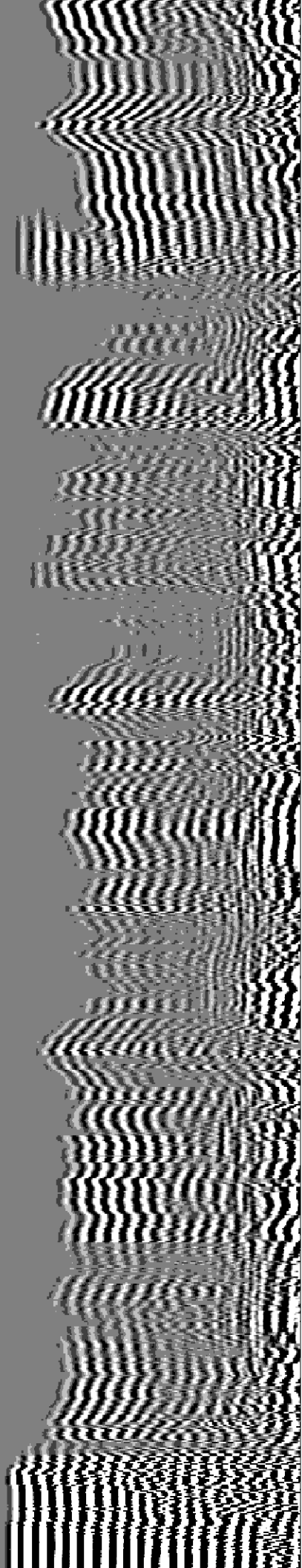
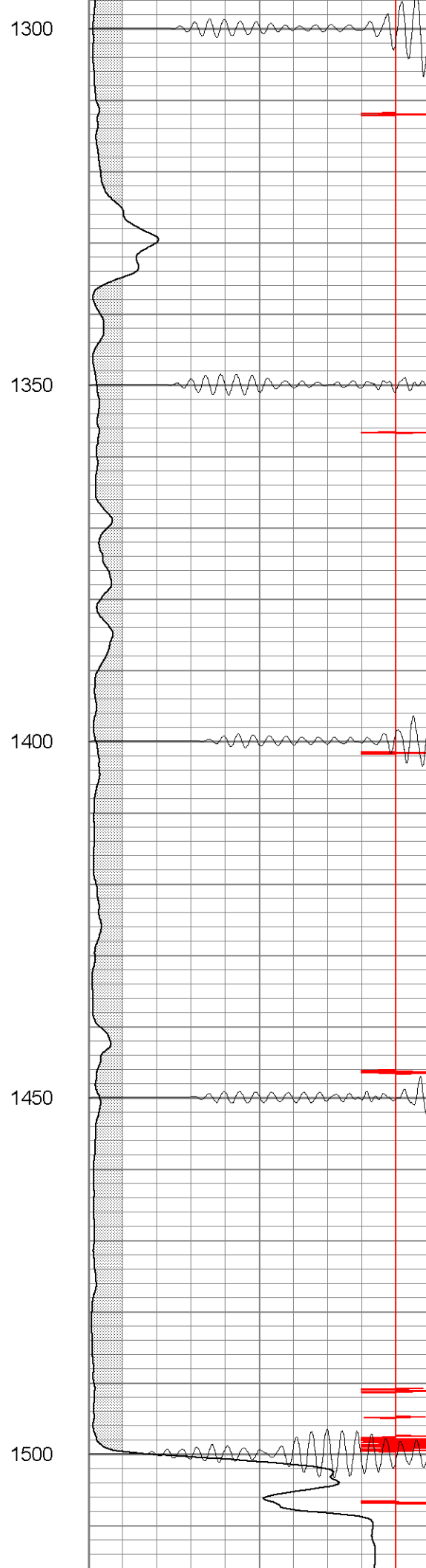
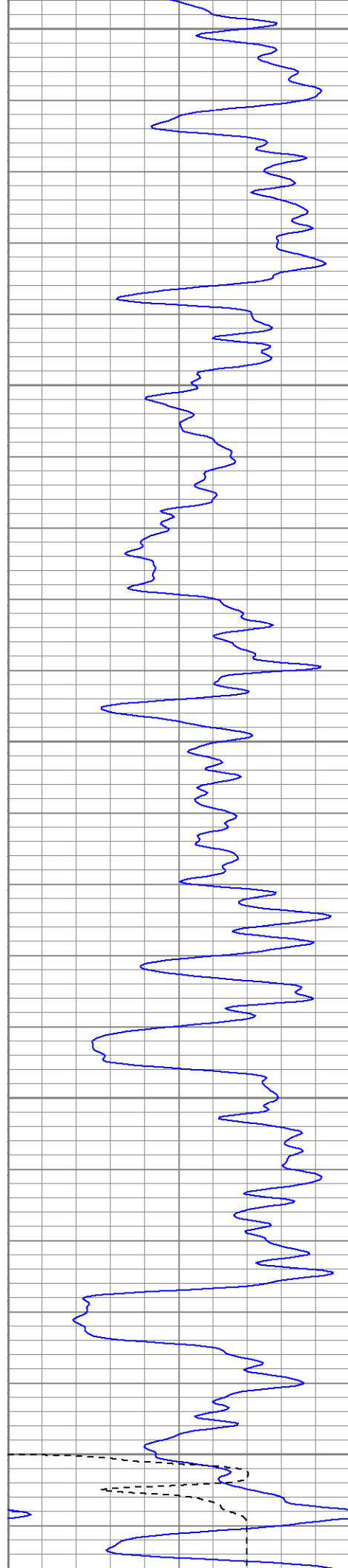
1100

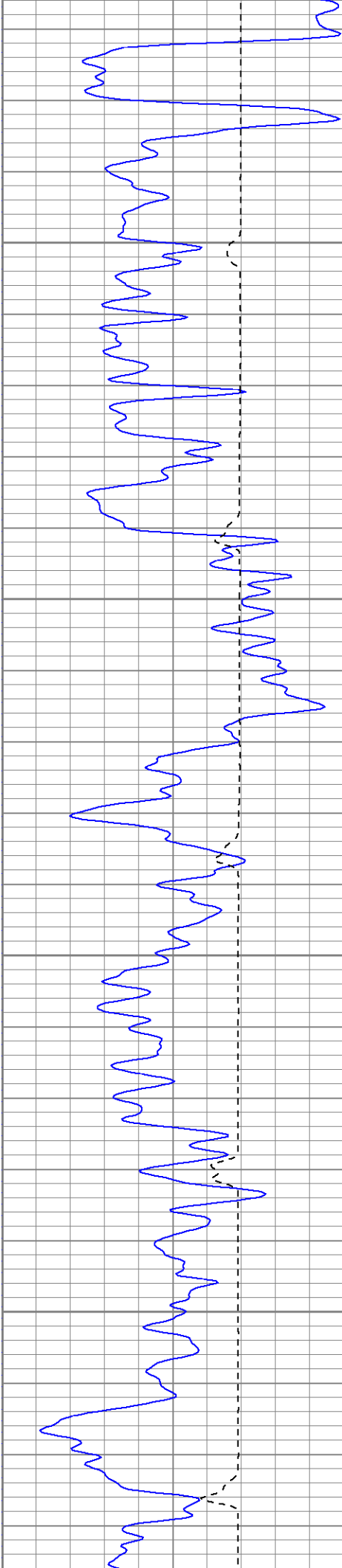
1150

1200

1250





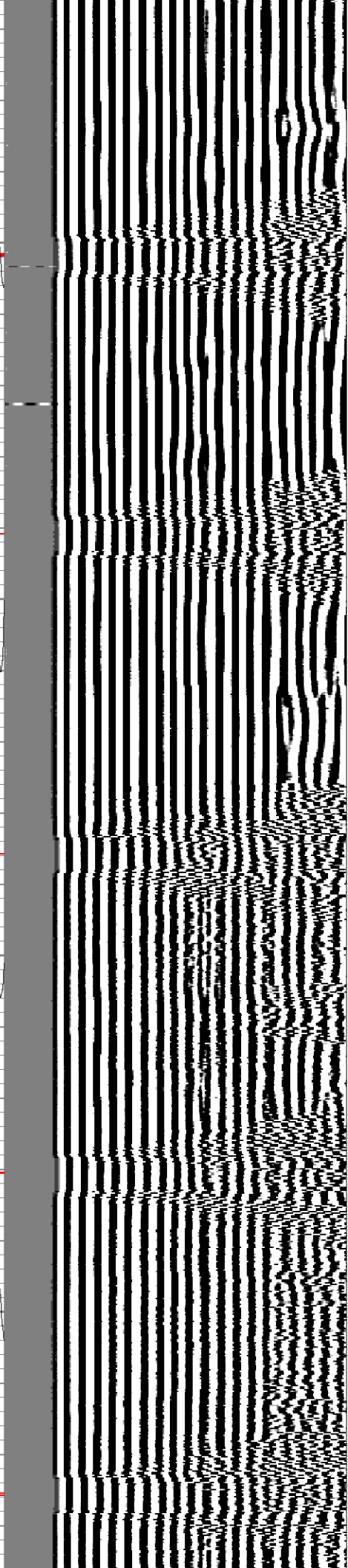
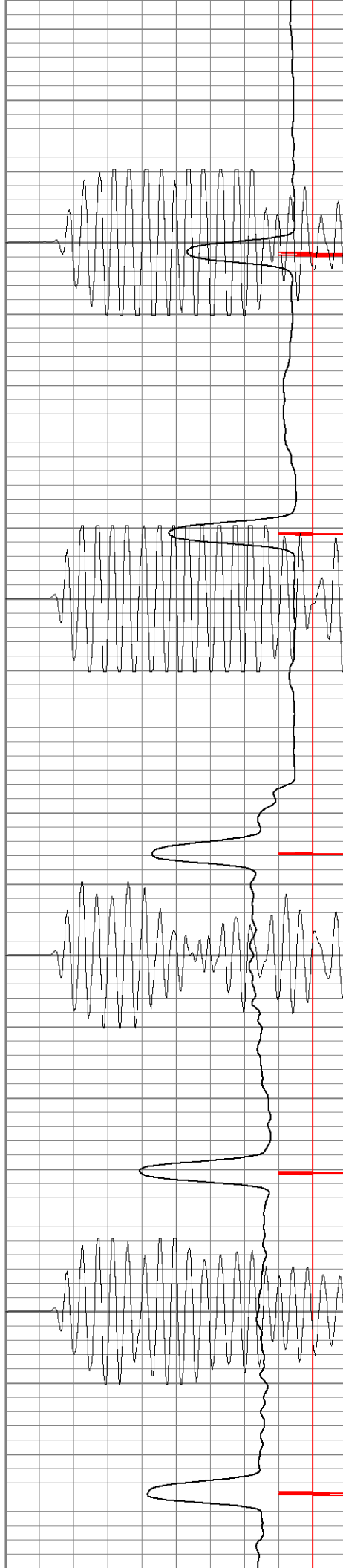


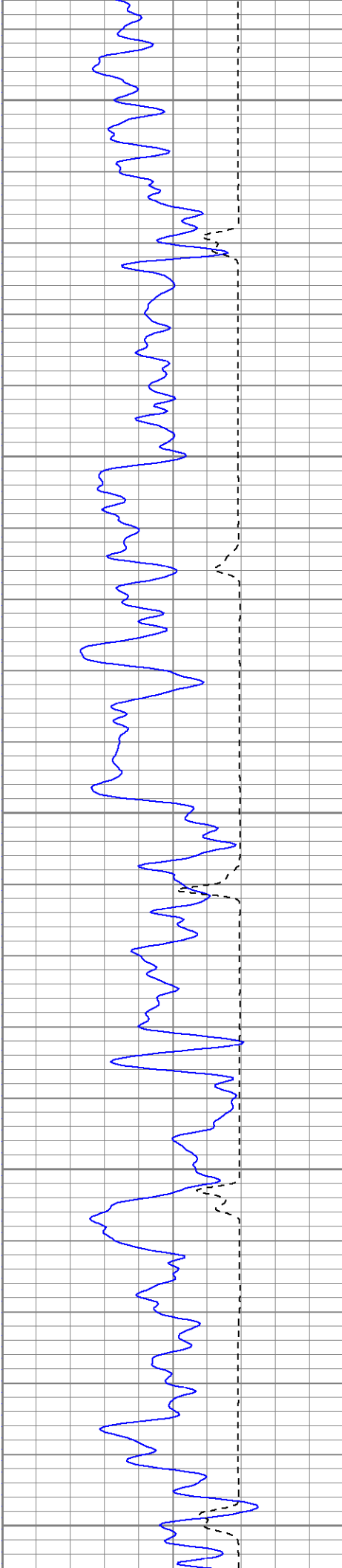
1550

1600

1650

1700





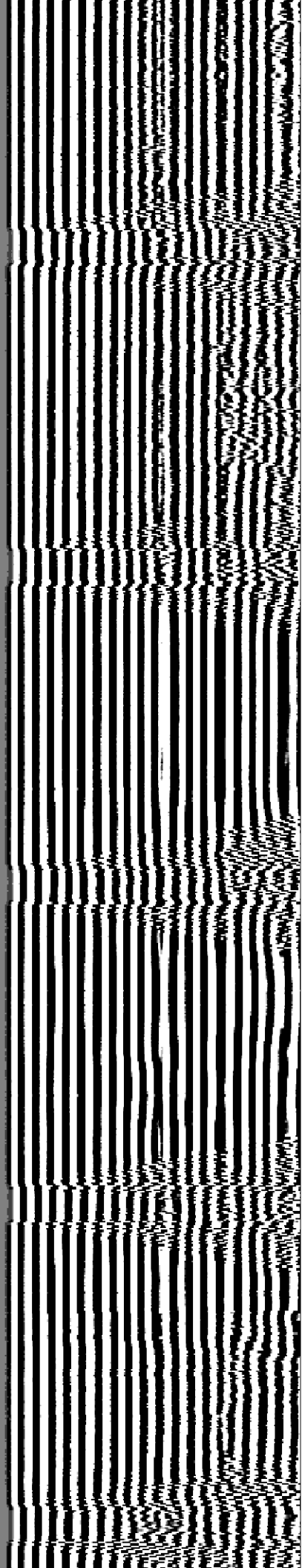
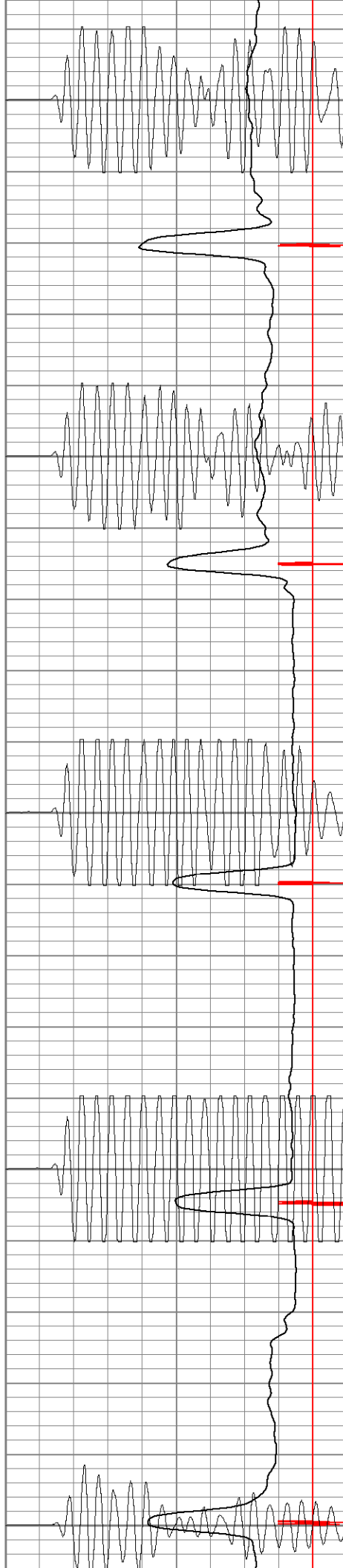
1750

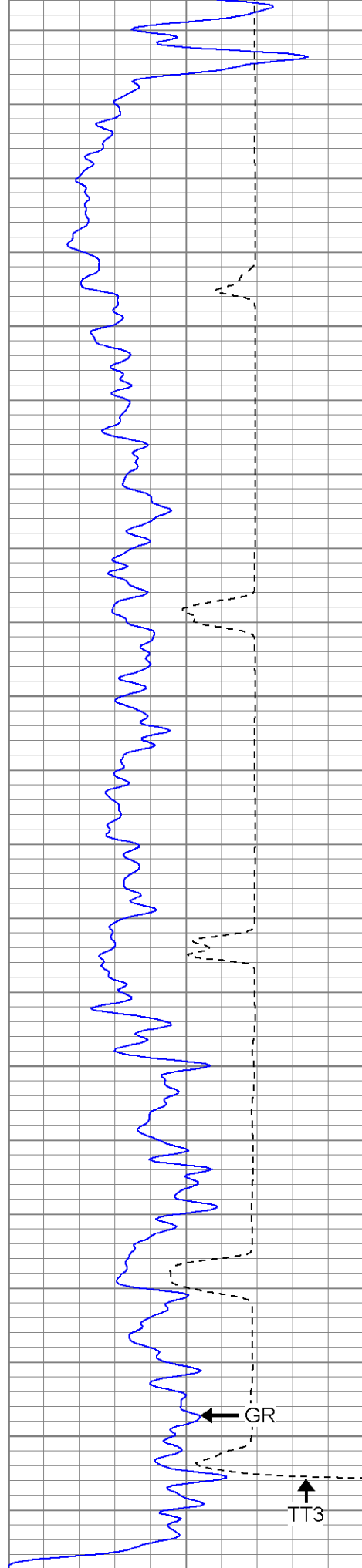
1800

1850

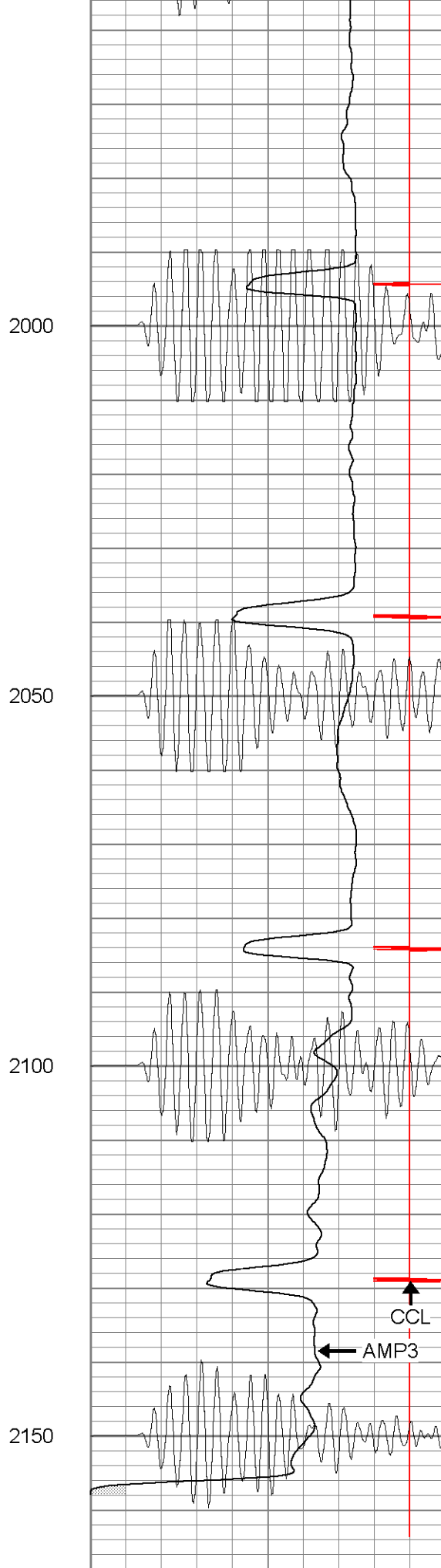
1900

1950

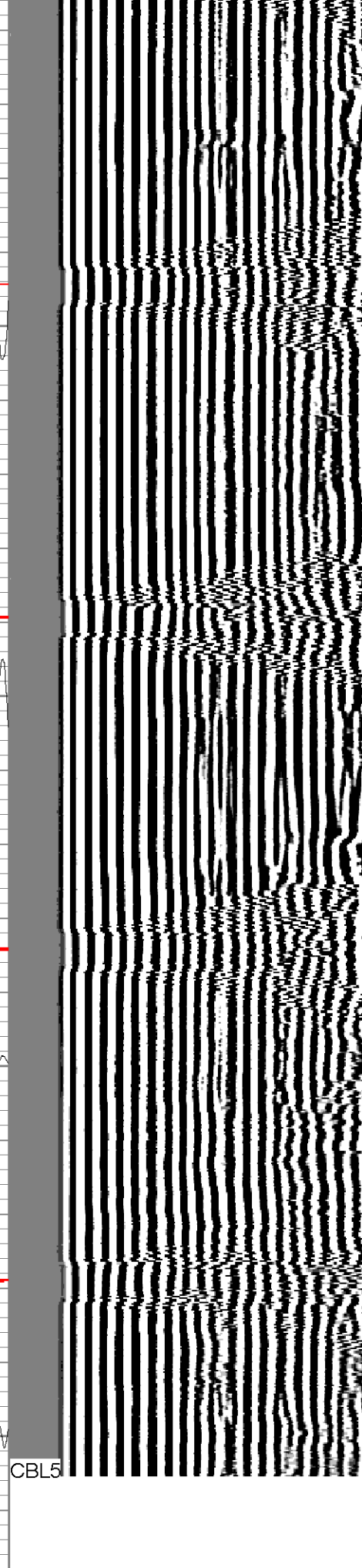




0	GR (GAPI)	200
200	GR (GAPI)	400



0	AMP3 (mV)	100
18	CCL	-2



200	Variable Density	1200
-----	------------------	------

400	GR (GAPI)	200
200	TT3 (usec)	400

200	CCL	1200
200	CBL5	1200



SUPERIOR

Black Lick, Pa.
 Mercer, Pa.
 Wooster, Oh.
 Cleveland, Ok.
 Trinidad, Co.

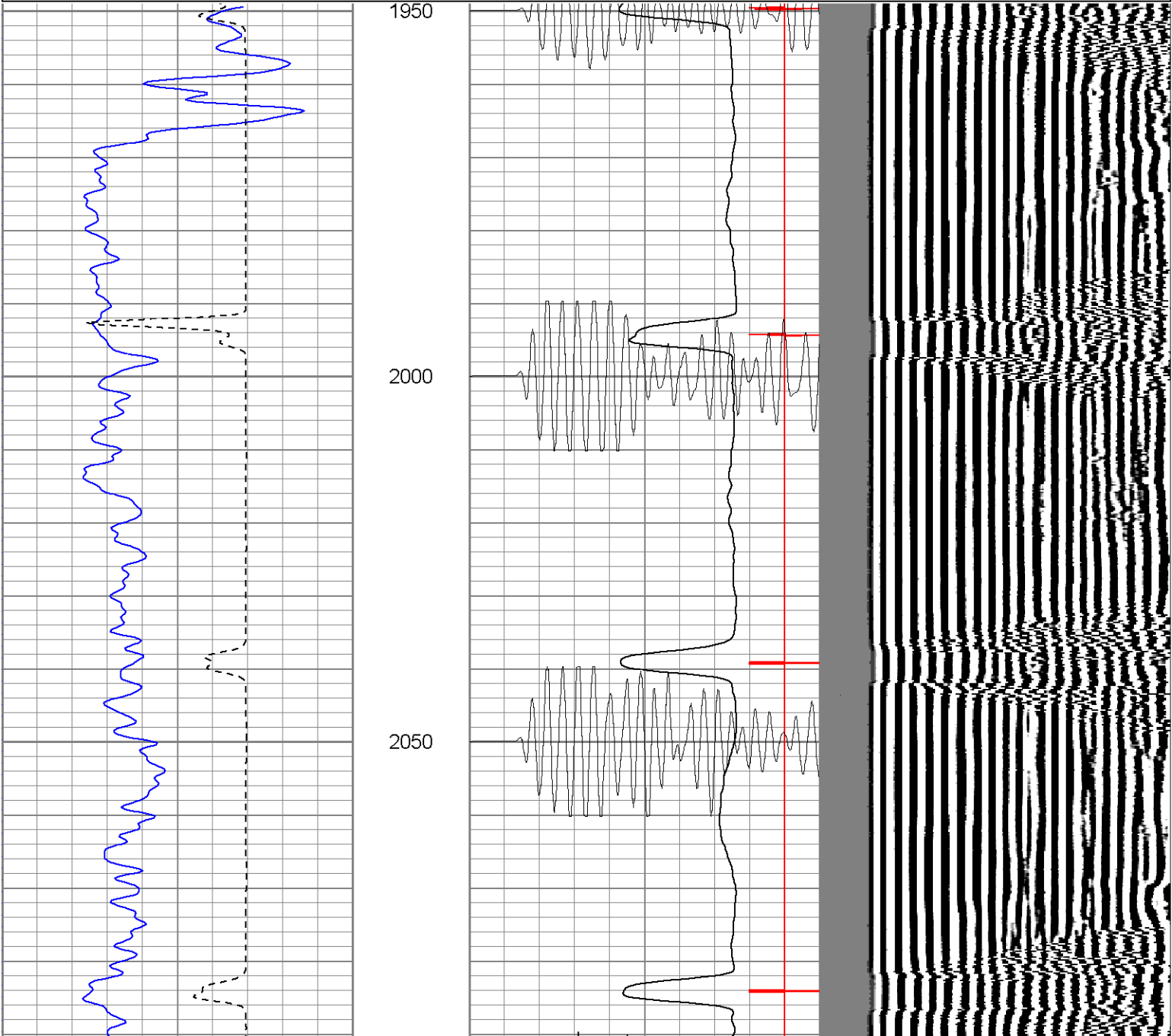
Repeat Section (0PSI)

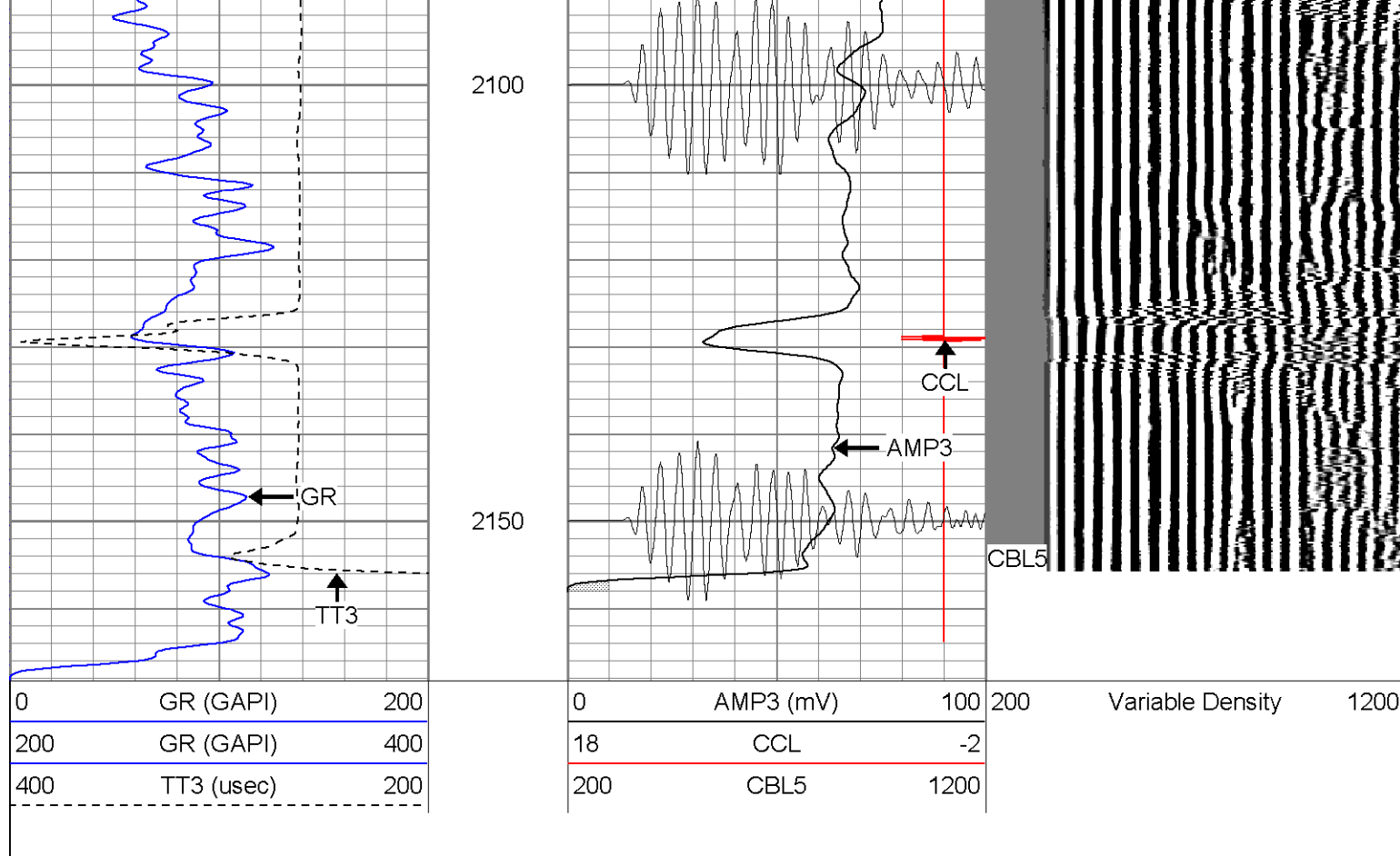
Database File:
 Dataset Pathname:
 Presentation Format:
 Dataset Creation:
 Charted by:

ac311032207b.db
 pass1.1
 cblrt
 Thu Mar 22 13:28:51 2007 by Calc Open-Cased 060407
 Depth in Feet scaled 1:240

0	GR (GAPI)	200
200	GR (GAPI)	400
400	TT3 (usec)	200

0	AMP3 (mV)	100	200	Variable Density	1200
18	CCL	-2			
200	CBL5	1200			





Calibration Report

Database File: ac311032207b.db
 Dataset Pathname: pass1
 Dataset Creation: Thu Mar 22 12:01:09 2007 by Log Open-Cased 060407

Gamma Ray Calibration Report

Serial Number: Titan2.75
 Tool Model: 2.75
 Performed: Wed Mar 07 08:33:06 2007

Calibrator Value: 200.0 GAPI

Background Reading: 40.0 cps
 Calibrator Reading: 240.0 cps

Sensitivity: 1.1000 GAPI/cps

Cement Bond Log Calibration Report

Serial Number: Titan4
 Tool Model: 4
 Performed: Thu Mar 08 08:32:41 2007

Depth: 1054.62 ft
 Casing Diameter: 5.5 in

3' Spacing 5' Spacing

Signal Zero: 0 1 mV
 Calibrated Amplitude: 85 85 mV
 Reading at Signal Zero: 0.00161133 0.0143555 V
 Reading in Free Pipe: 1.27 1.65081 V

Gain: 67.0142 51.3306
 Offset: 0.25 0.263125

Sensor	Offset (ft)	Schematic	Description	Len (ft)	OD (in)	Wt (lb)
CHD	20.38		CHD-None (0)	0.75	1.50	5.00
CENT	19.63		CENT-X (2)	3.00	1.69	25.00
WVF5	12.82		CBL-4 (Titan4)	8.15	2.25	110.00
WVF3	11.82					
CENT	8.48		CENT-X (1)	3.00	1.69	25.00
CCL	4.27		CCL-2.75 (Titan2.75)	1.71	2.75	15.00
GR	1.42		GR-2.75 (Titan2.75) Two Point	3.77	2.75	25.00
Dataset: ac311032207b.db: field/well/run1/pass1 Total Length: 20.38 ft Total Weight: 205.00 lb O.D. 2.75 in						