

GAMMA RAY  
NEUTRON  
LOG

County Las Animas State Colorado

er Ser

Colorado

---

Elevation

[illegible]

Depth Driller

Depth Logger

Top-Log Interval

Open Hole S

Type Fluid

Max. Recorded Temp.

Estimated Cement Top

Time | order on Board

Equipment A

Location

Witnessed By \_\_\_\_\_

**Figure 1**

Run Number

---

---

**0**

Surface String

---

Prot. String

inner

---

Well Directions:

Lorencito Gate-Stay on Main Road-Cross into New Mexico-

Drive Past A-182 WDW to "T"-Turn Left-

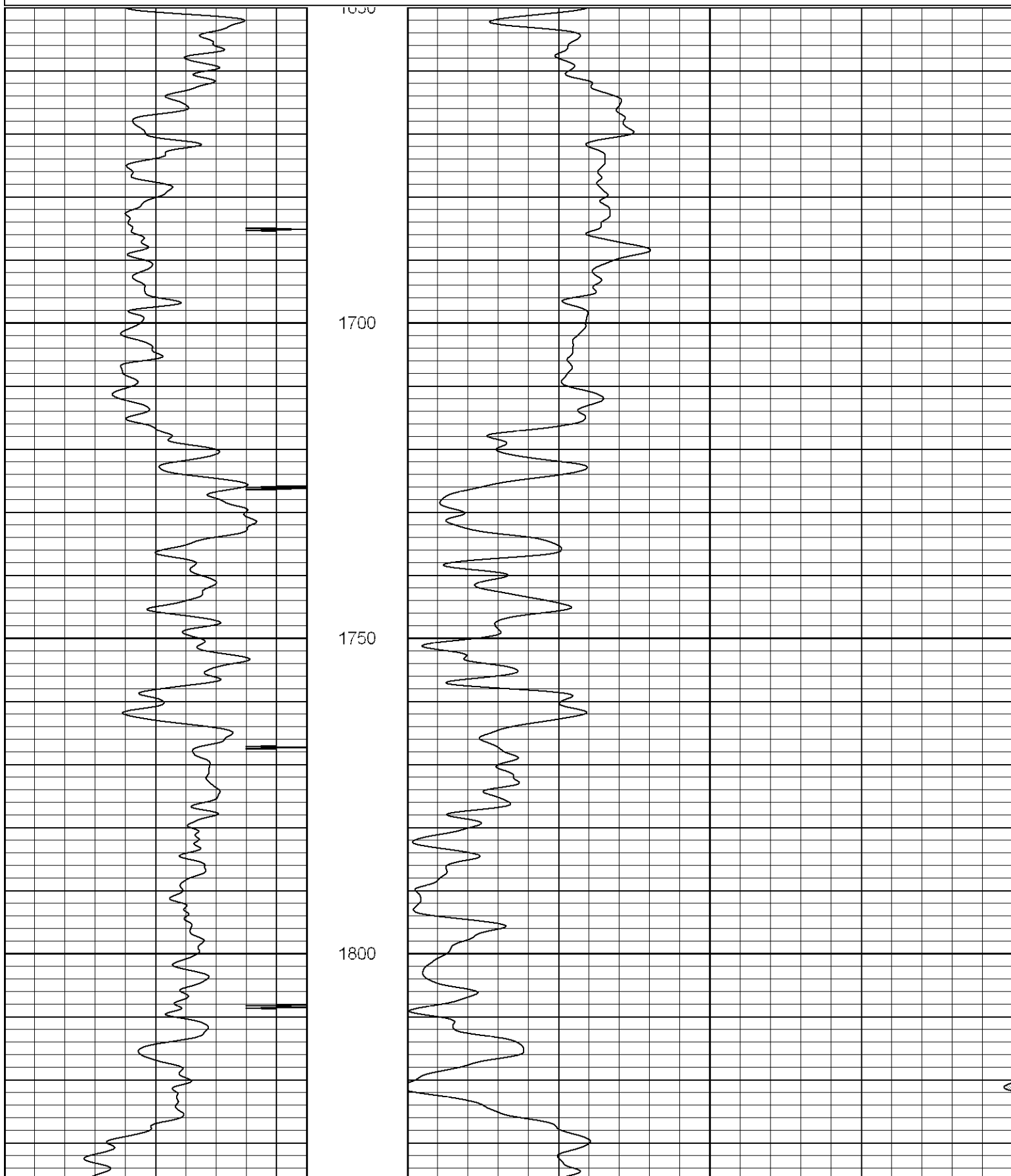
1st Right(A-1 Compressor)-2nd Right-Stay Left at "Y"-Stay Left at Next "Y"

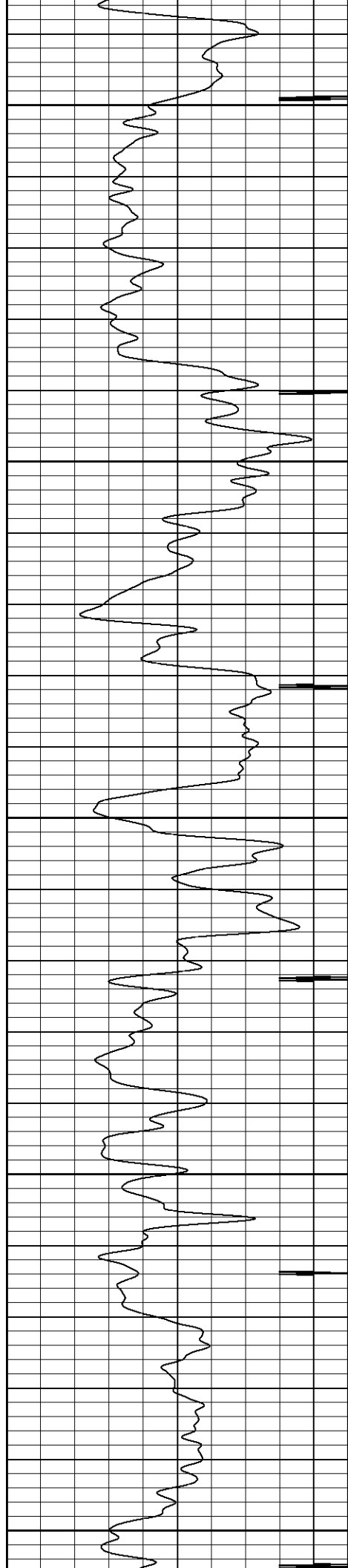
-Drive Past A-131-Follow Road to Location.

# Main Pass

Database File: elpasovprc122-050306bn.db  
Dataset Pathname: pass3.1  
Presentation Format: gr-n-ccl  
Dataset Creation: Wed May 03 14:34:42 2006 by Calc Warrior 7.0 STD Ope  
Charted by: Depth in Feet scaled 1:240

0	GR (GAPI)	200	30	NPOR (pu)	-10
18	CCL	-2			





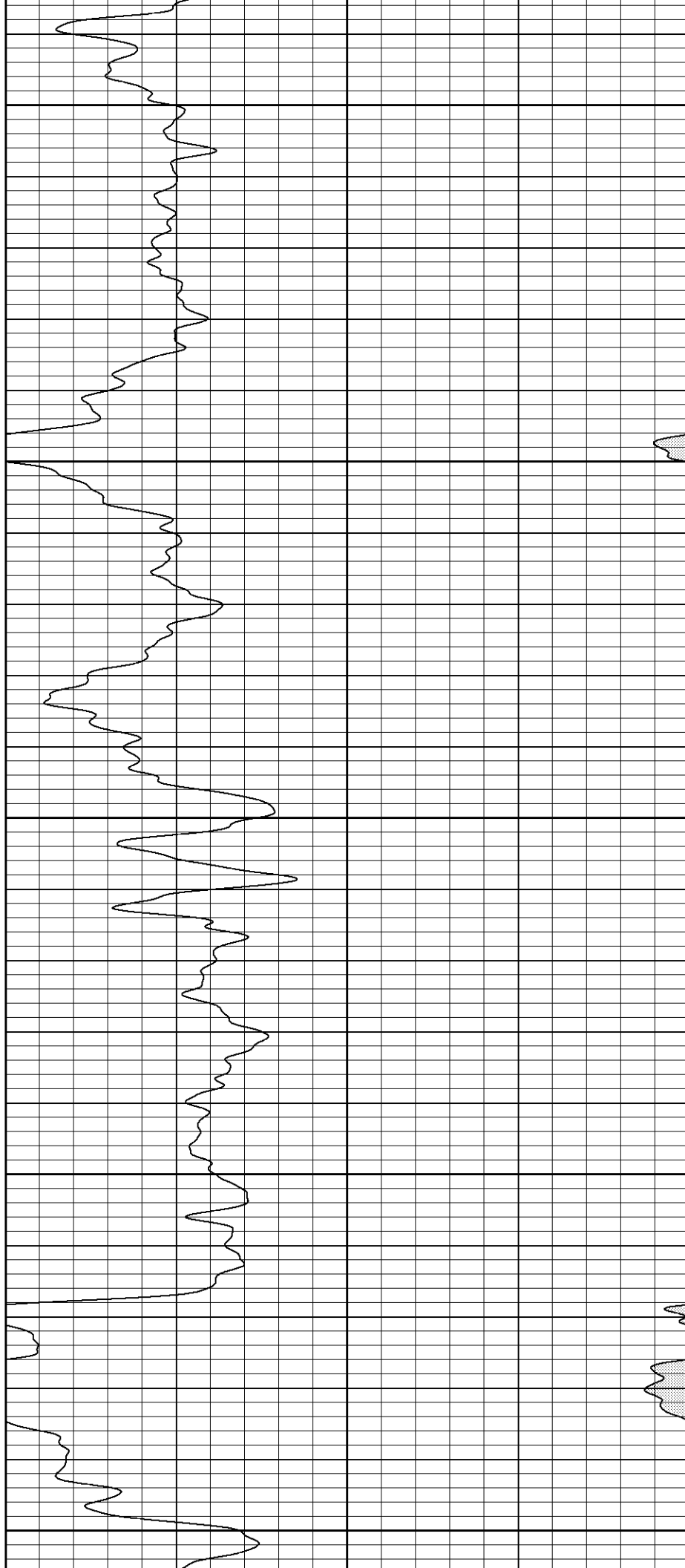
1850

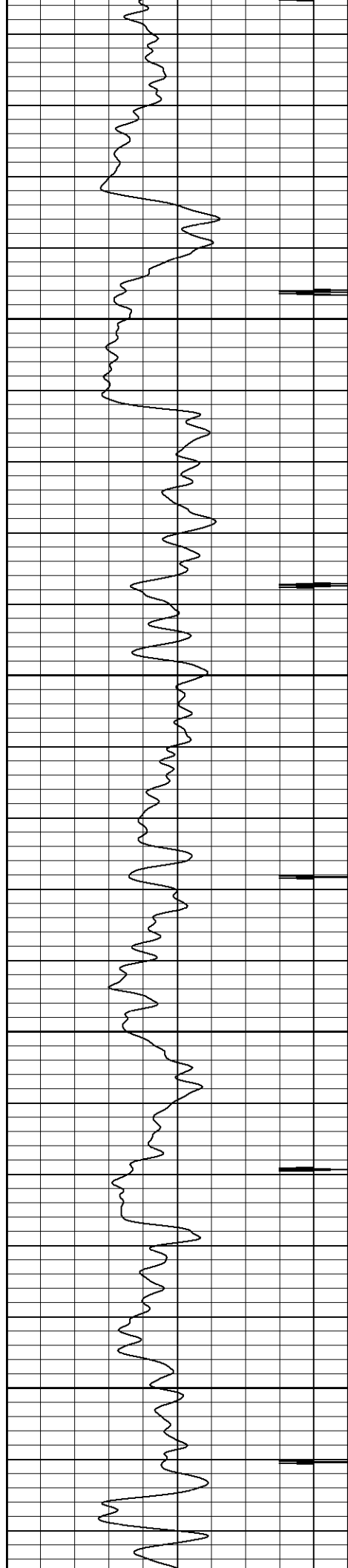
1900

1950

2000

2050



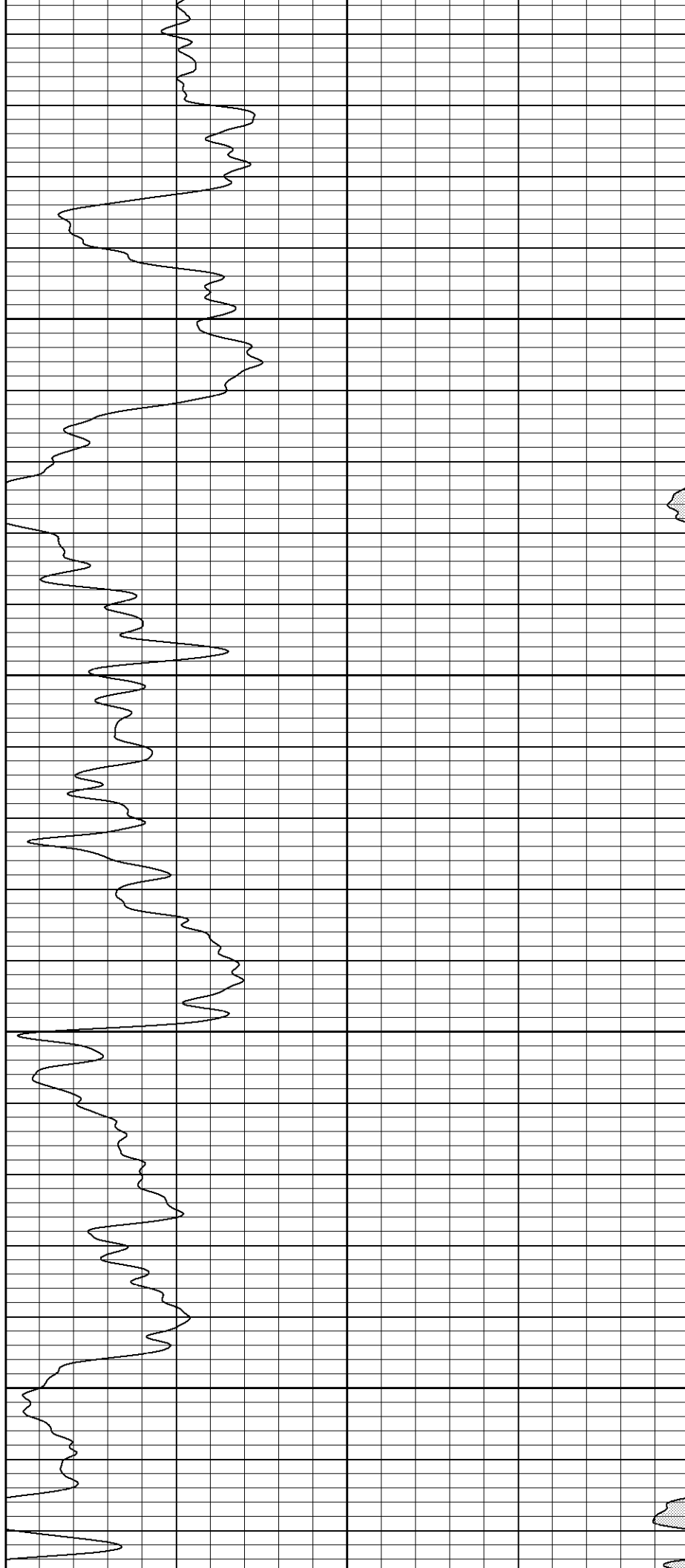


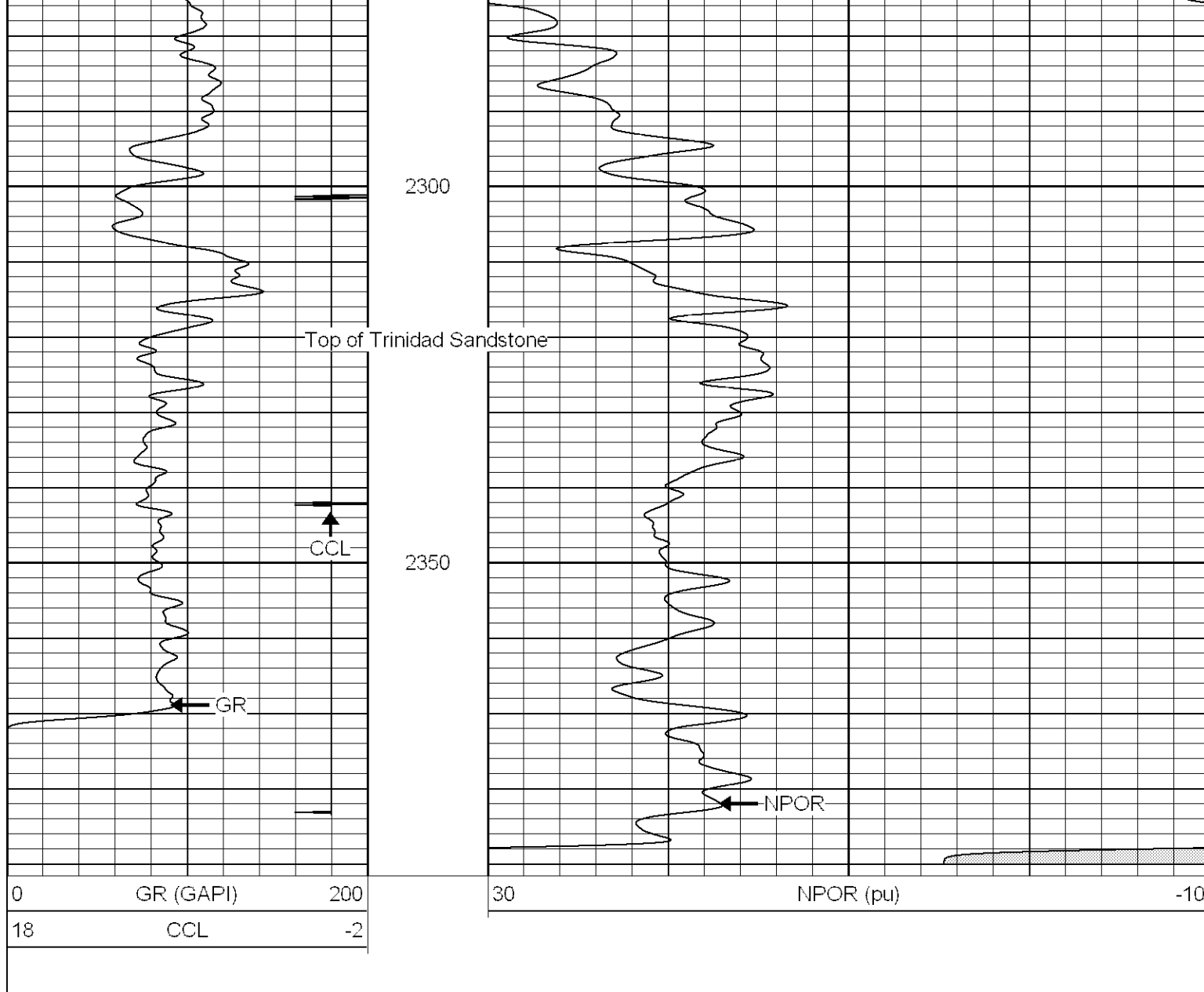
2100

2150

2200

2250





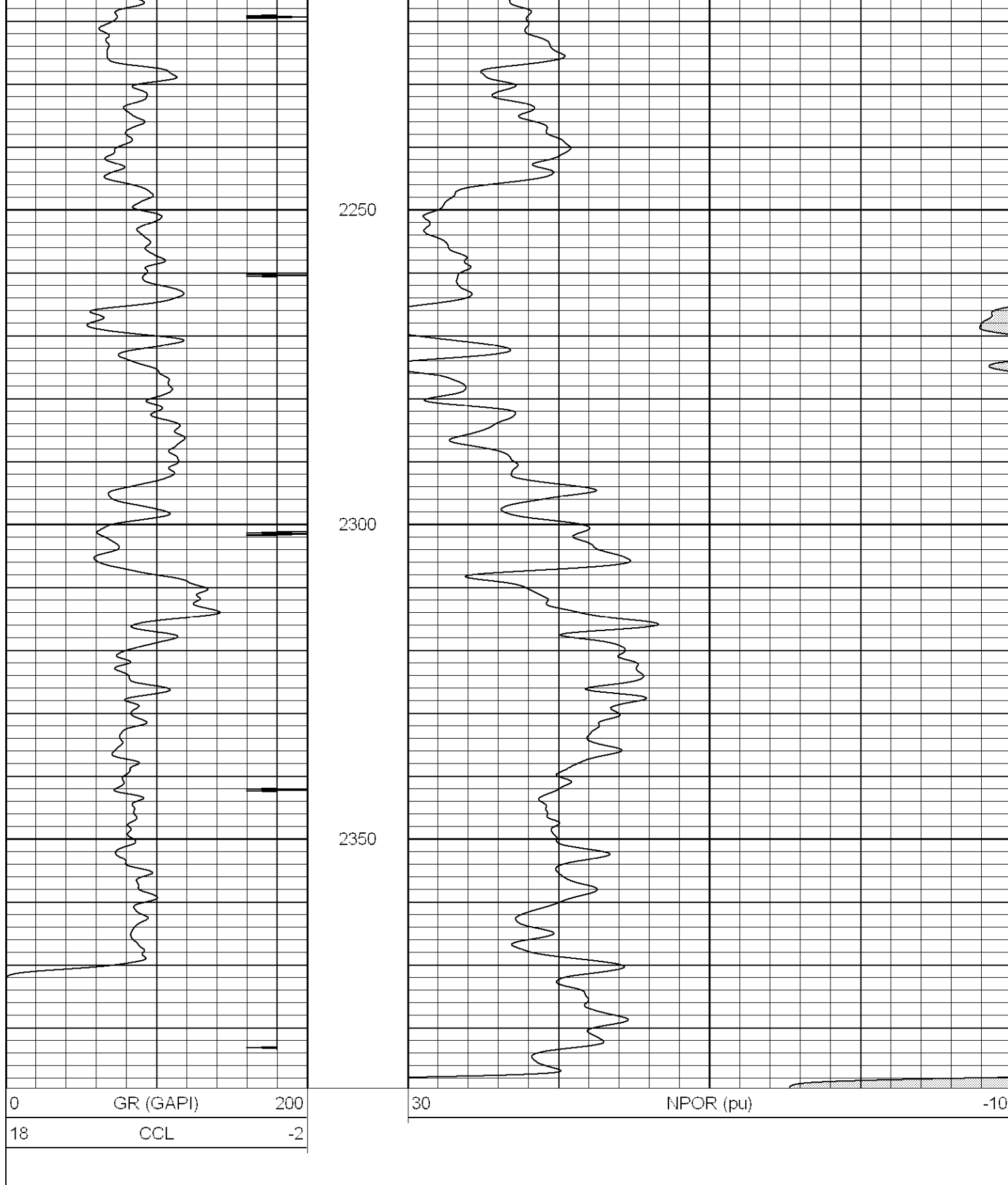
**Patterson**

## Repeat Section

Database File: elpasovprc122-050306bn.db  
 Dataset Pathname: pass2.2  
 Presentation Format: gr-n-ccl  
 Dataset Creation: Wed May 03 14:36:19 2006 by Calc Warrior 7.0 STD Ope  
 Charted by: Depth in Feet scaled 1:240

0	GR (GAPI)	200	30	NPOR (pu)	-10
18	CCL	-2			





### Neutron Calibration Report

Serial Number:

Titan

Tool Model:

T

Performed:

Thu May 08 10:16:24 2003

Calibrator Value:

1200

NAPI

Calibrator Reading:	1700	cps	
Sensitivity:	1	NAPI/cps	
Cement Bond Log Calibration Report			
Serial Number:	Titan3		
Tool Model:	T3		
Performed:	Wed May 03 11:31:51 2006		
Depth:	41.715	ft	
Casing Diameter:	5.5	in	
	3' Spacing	5' Spacing	
Signal Zero:	1	1	mV
Calibrated Amplitude:	85	85	mV
Reading at Signal Zero:	0	0.00661621	V
Reading in Free Pipe:	1	1.50681	V
Gain:	84	55.9927	
Offset:	1	0.62954	
Gamma Ray Calibration Report			
Serial Number:	Titan3		
Tool Model:	T2		
Performed:	Thu Apr 13 15:03:04 2006		
Calibrator Value:	200.0	GAPI	
Background Reading:	54.0	cps	
Calibrator Reading:	219.0	cps	
Sensitivity:	1.0000	GAPI/cps	