



SUPERIOR
Black Lick, Pa.
Mercer, Pa.
Wooster, Oh.
Cleveland, Ok.
Trinidad, Co.

CEMENT BOND GAMMA RAY

Company XTO Energy Inc.
Well Golden Eagle 32-02
Field Purgatorie River
County Las Animas
State CO

Company XTO Energy Inc.
Well Golden Eagle 32-02
Field Purgatorie River
County Las Animas
State CO

Location: API # : 05 071 09113 00

1317' FNL & 1906' FEL

SEC 32 TWP 33S RGE 67W

Permanent Datum Ground Level Elevation 7392'
Log Measured From Ground Level
Drilling Measured From Ground Level

Other Services
PRES
CONTROL
Elevation
K.B. -----
D.F. -----
G.L. 7392'

Date				4/30/07			
Run Number				two			
Depth Driller				1976'			
Depth Logger				1827'			
Bottom Logged Interval				1823'			
Top Log Interval				Surf.			
Open Hole Size				7 7/8"			
Type Fluid				water			
Density / Viscosity				///			
Max. Recorded Temp.				///			
Estimated Cement Top				Surf.			
Time Well Ready				9:10			
Time Logger on Bottom				9:20			
Equipment Number				0703			
Location				Trinidad			
Recorded By				Worley			
Witnessed By				Mr. Polley			
Borehole Record				Tubing Record			
Run Number	Bit	From	To	Size	Weight	From	To
Casing Record							
Surface String	Size	8 5/8"		Wgt/Ft	Top		Bottom
Prot. String					00		482"
Production String	5 1/2"				00		NA
Liner							

<<< Fold Here >>>

All interpretations are opinions based on inferences from electrical or other measurements and we cannot and do not guarantee the accuracy or correctness of any interpretation, and we shall not, except in the case of gross or willful negligence on our part, be liable or responsible for any loss, costs, damages, or expenses incurred or sustained by anyone resulting from any interpretation made by any of our officers, agents or employees. These interpretations are also subject to our general terms and conditions set out in our current Price Schedule.

Comments

Second Bosque entrance four miles past Weston, turn left,
first left (old railroad tracks), first right, at Y stay left, at T stay right to location.

CBL ran under 1000 PSI.



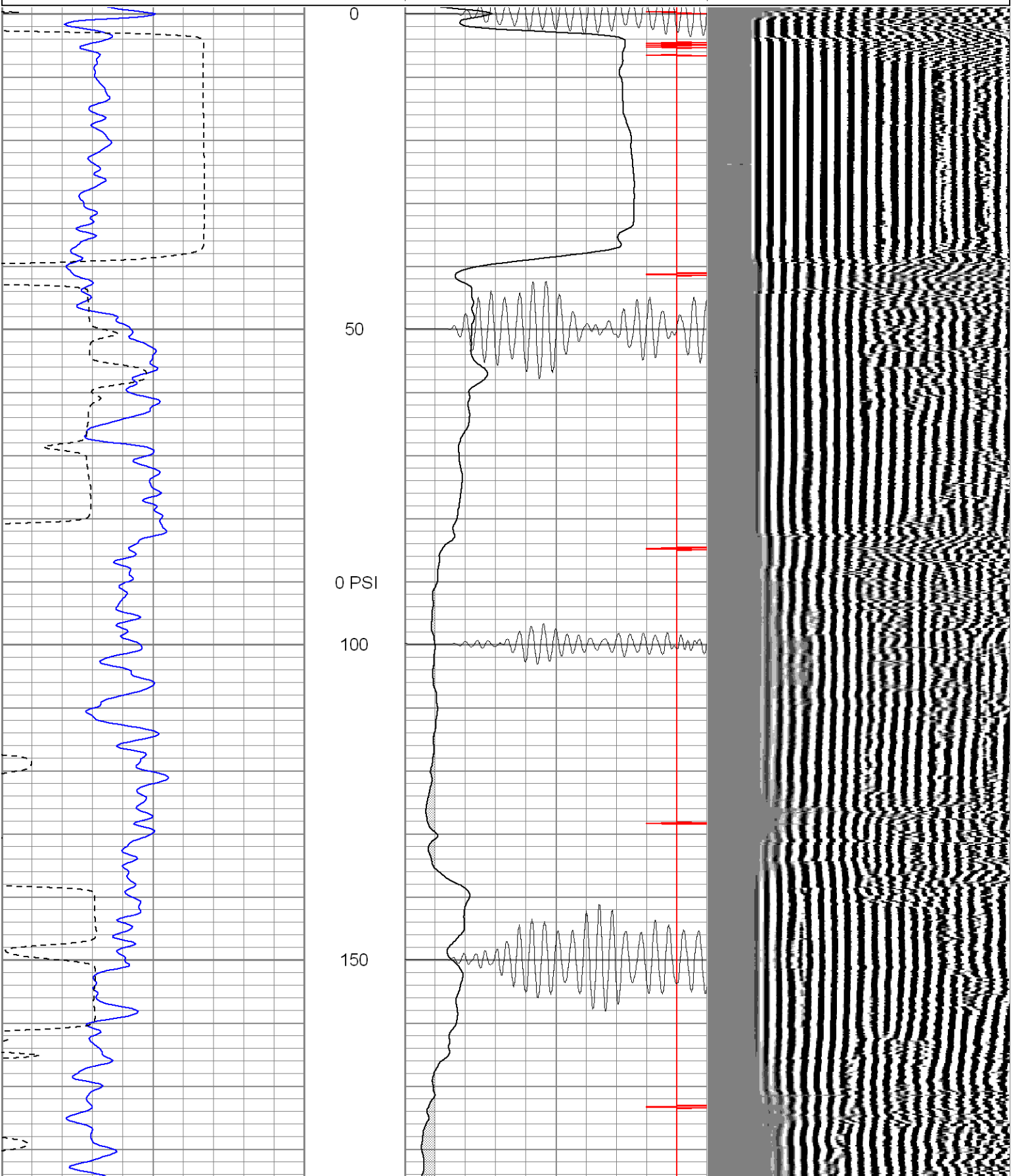
SUPERIOR

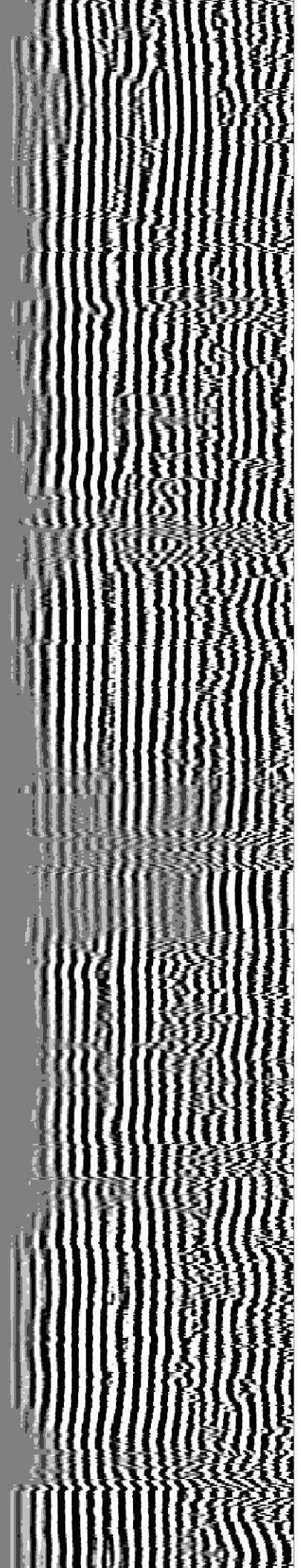
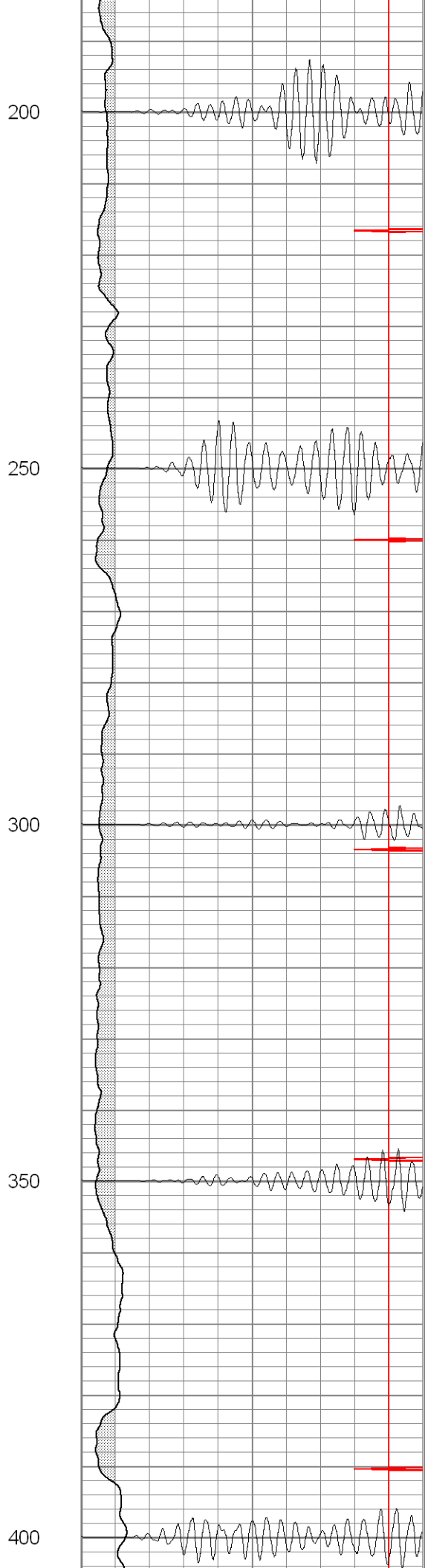
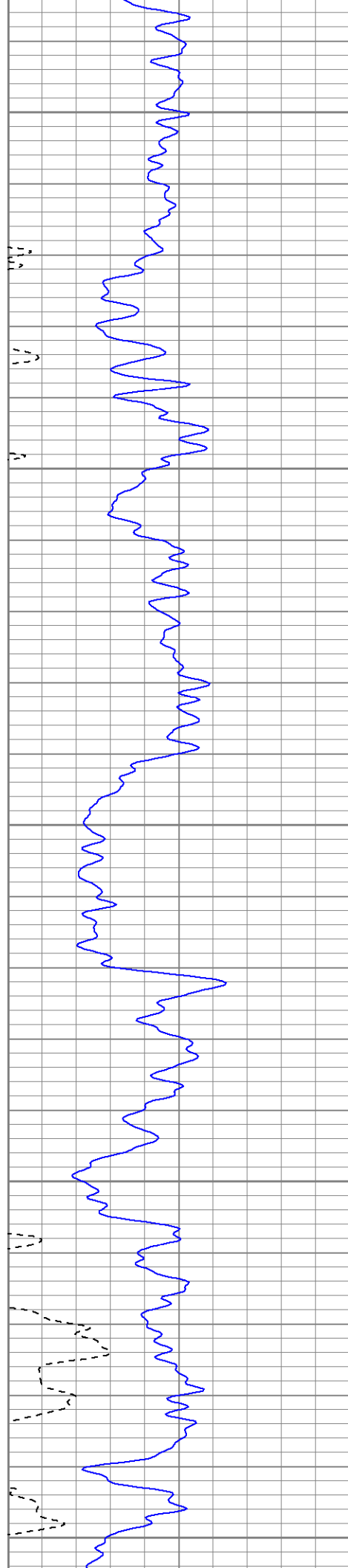
Black Lick, Pa.
Mercer, Pa.
Wooster, Oh.
Cleveland, Ok.
Trinidad, Co.

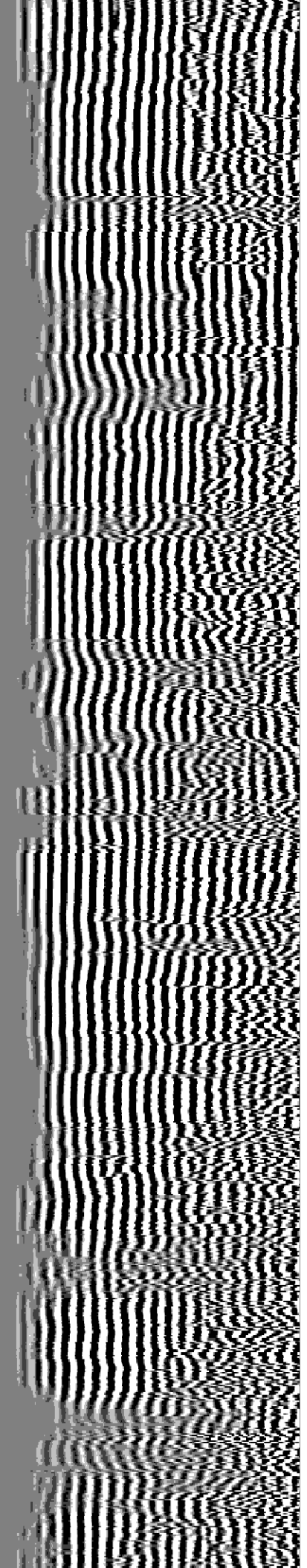
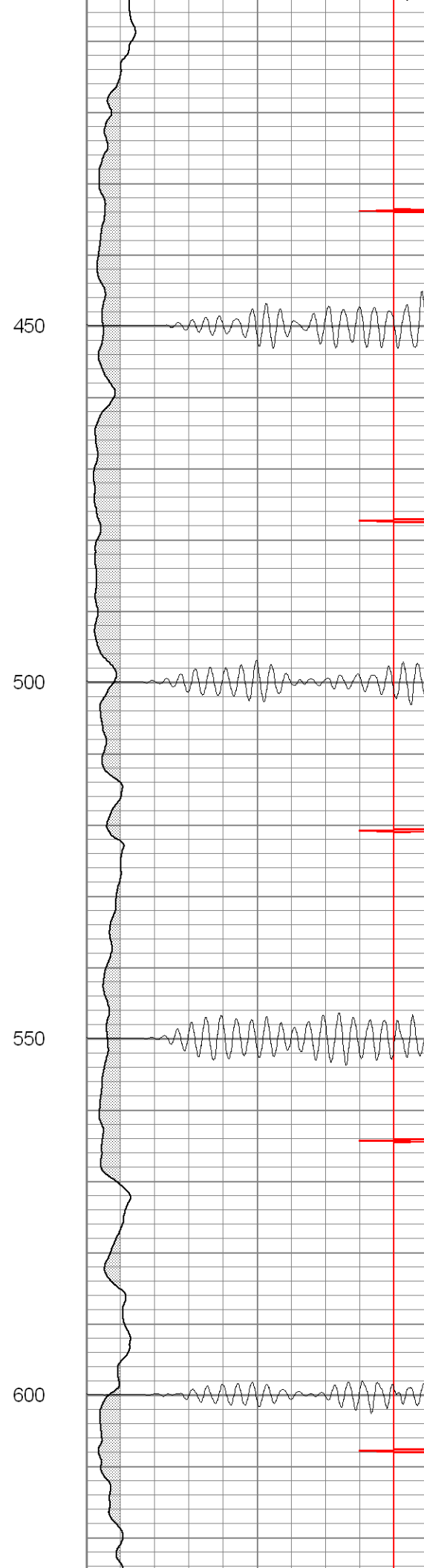
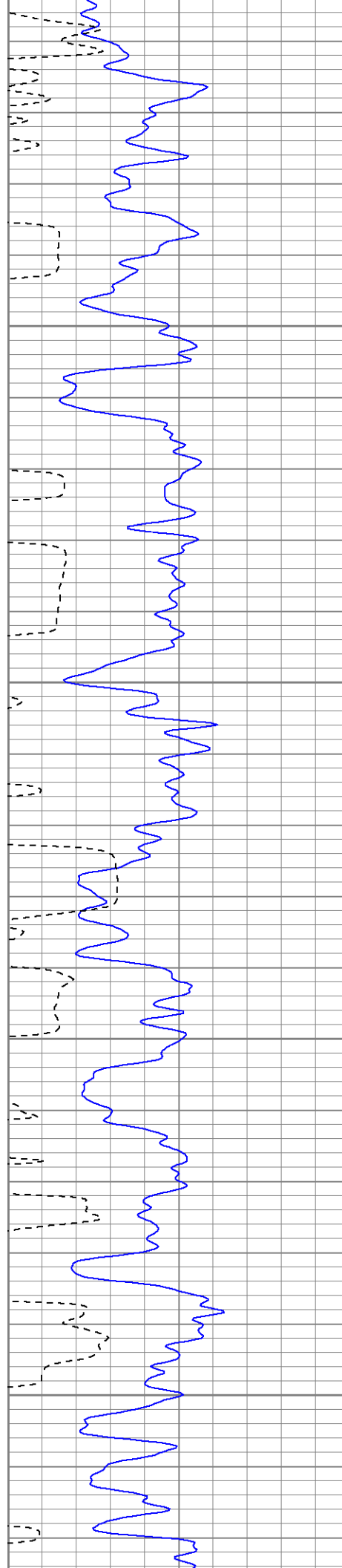
Main Pass 1000 PSI

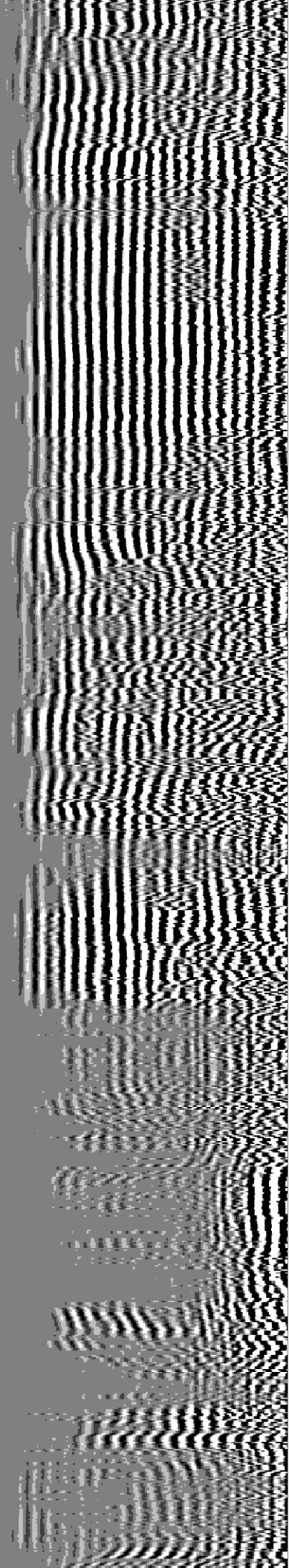
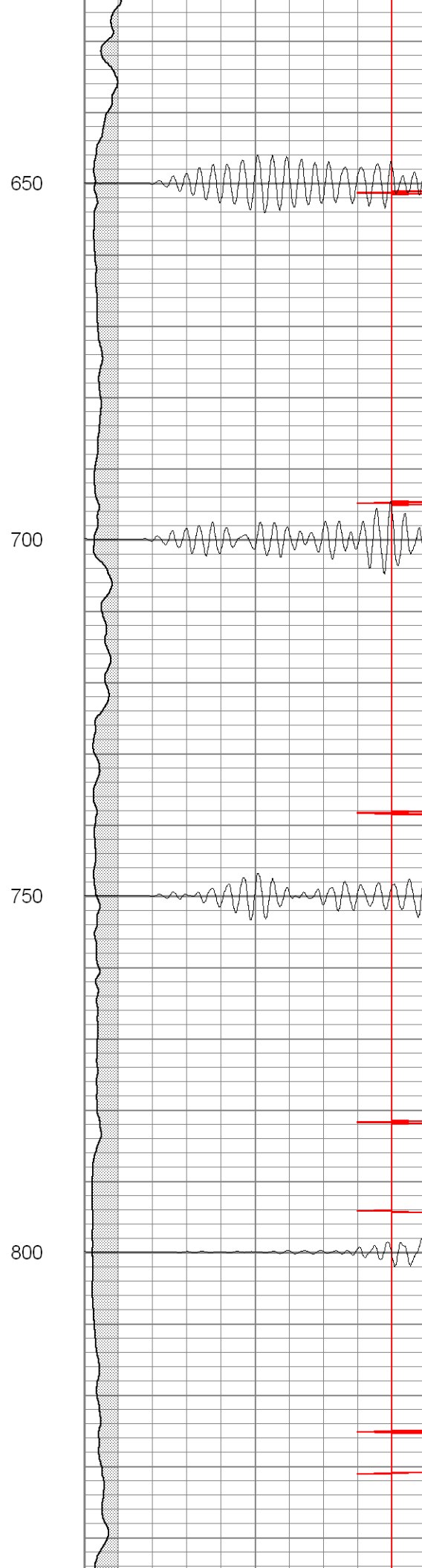
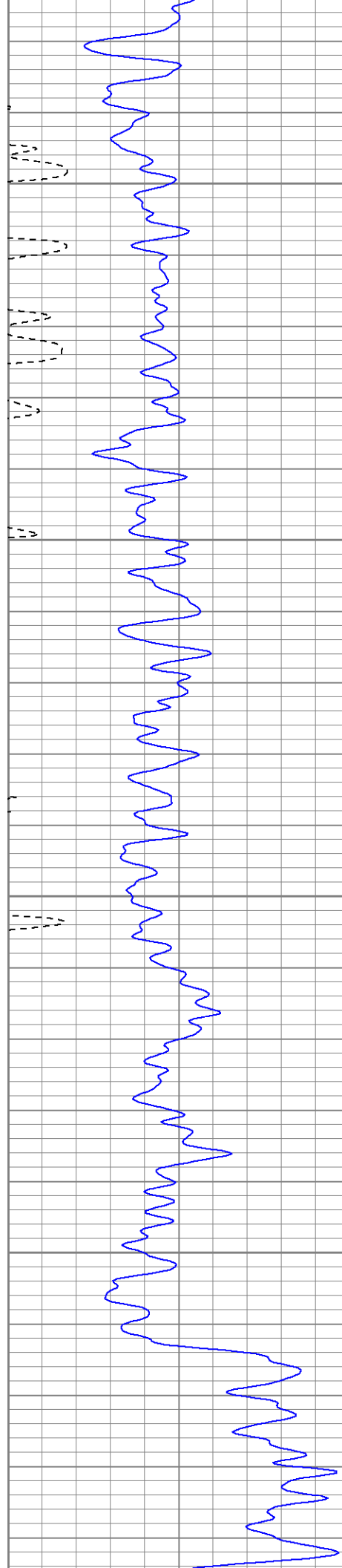
Database File: ge32-02b43007.db
Dataset Pathname: pass2
Presentation Format: cblrt
Dataset Creation: Mon Apr 30 09:37:58 2007 by Log Warrior 7.0 STD Cas
Charted by: Depth in Feet scaled 1:240

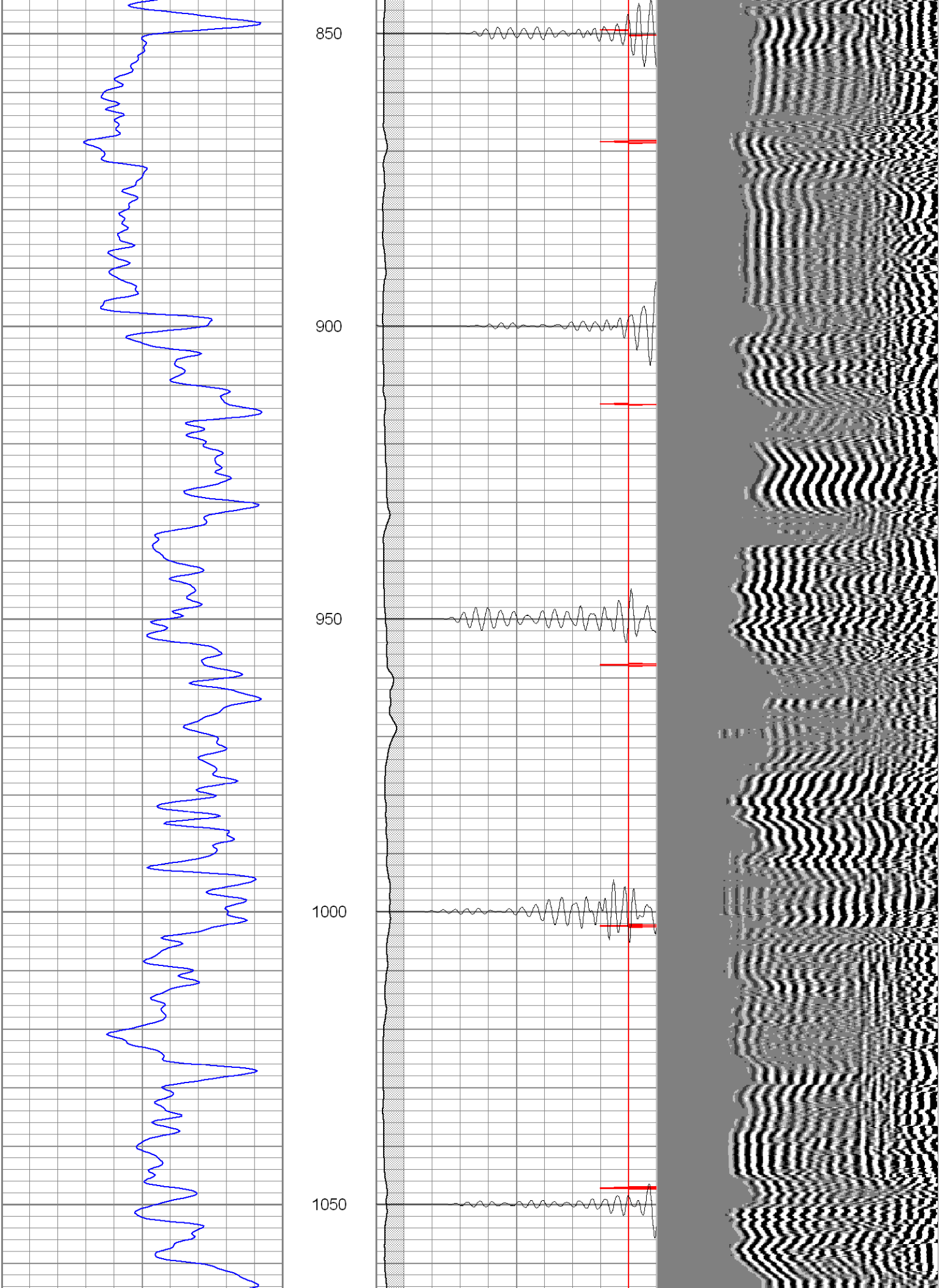
0	GR (GAPI)	200	0	AMP3 (mV)	100	200	Variable Density	1200
400	TT3 (usec)	200	18	CCL	-2			
			200	CBL5	1200			

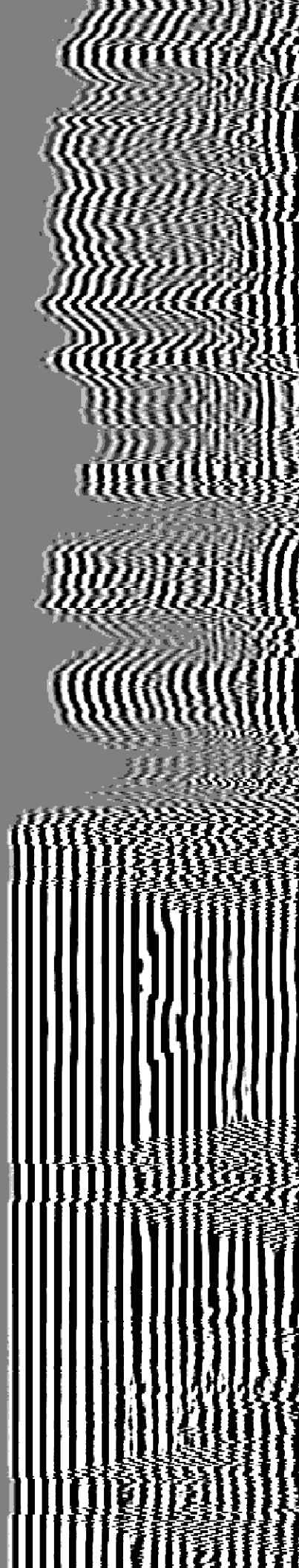
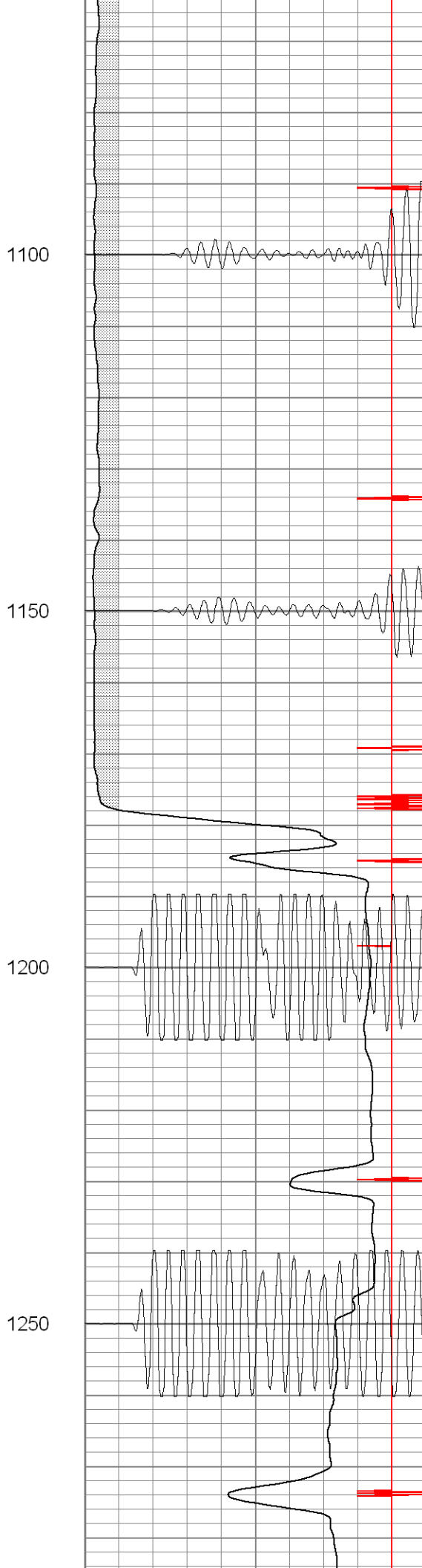
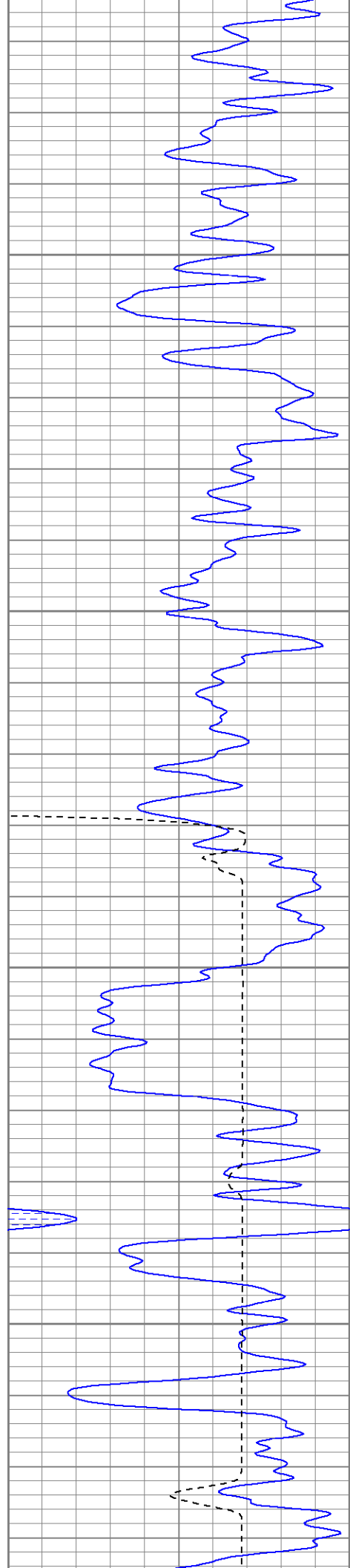


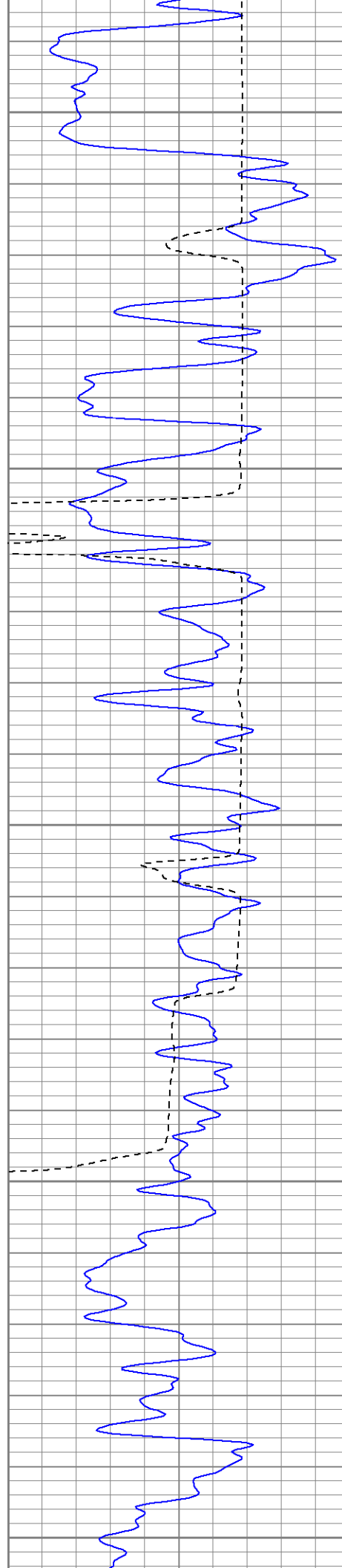












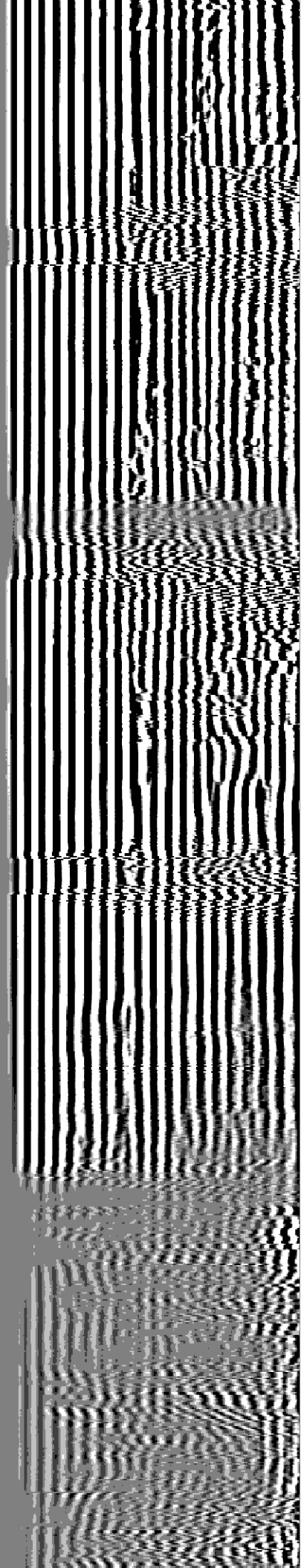
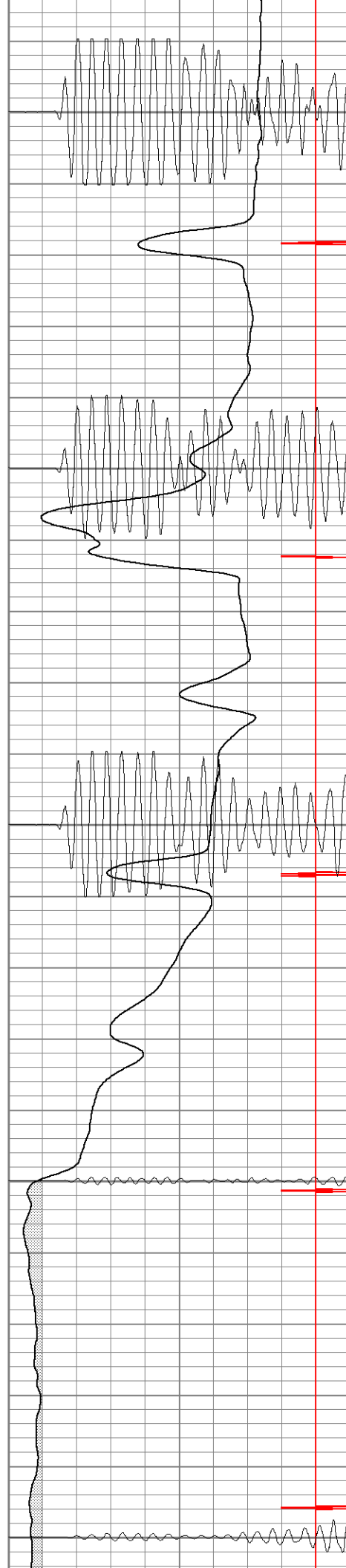
1300

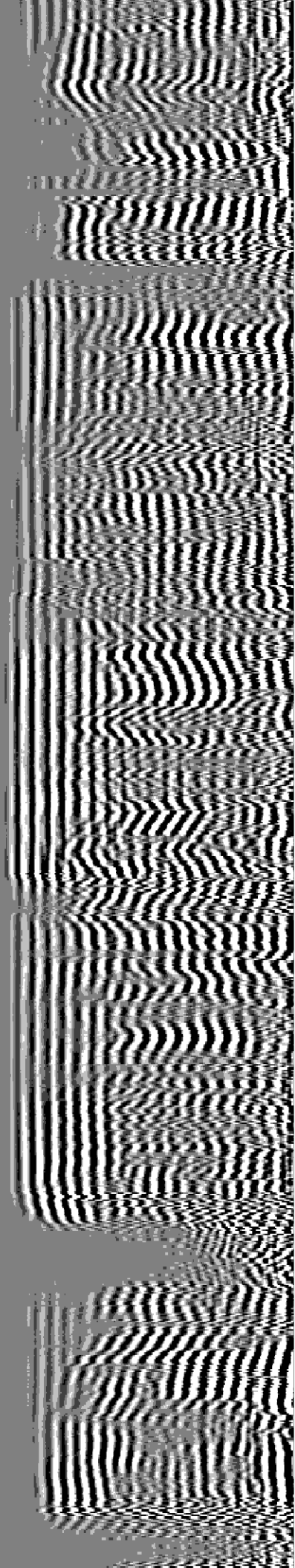
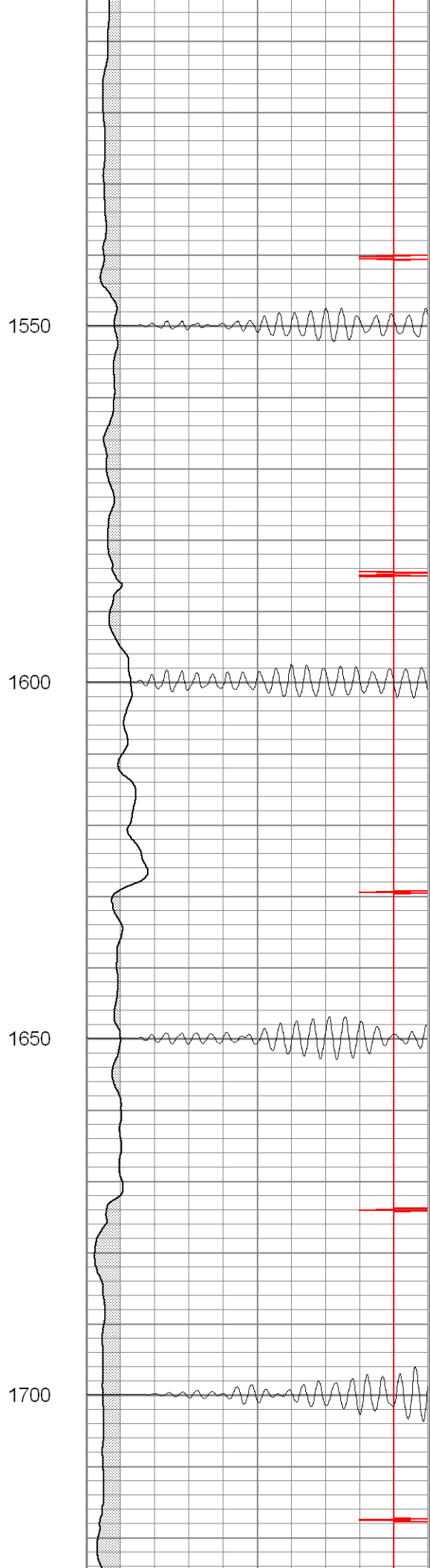
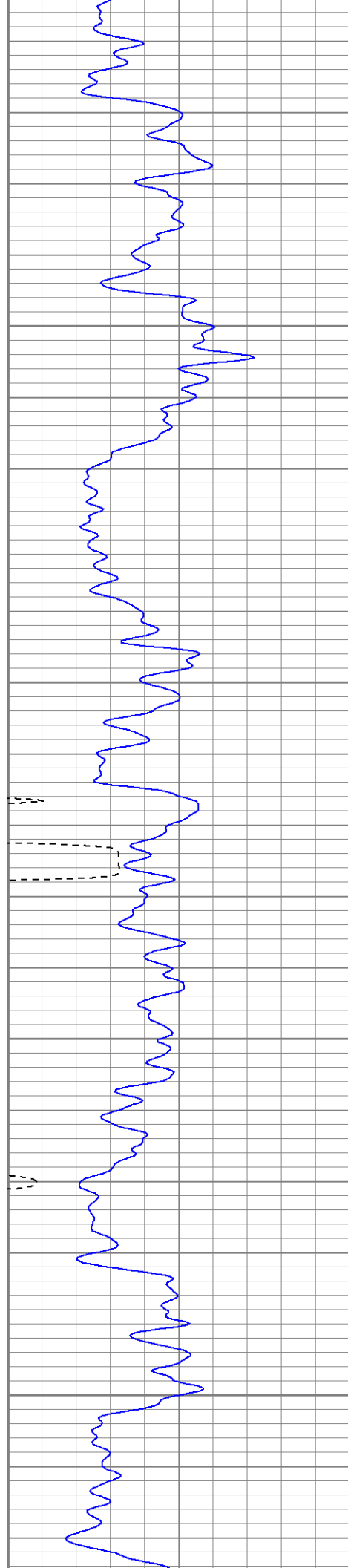
1350

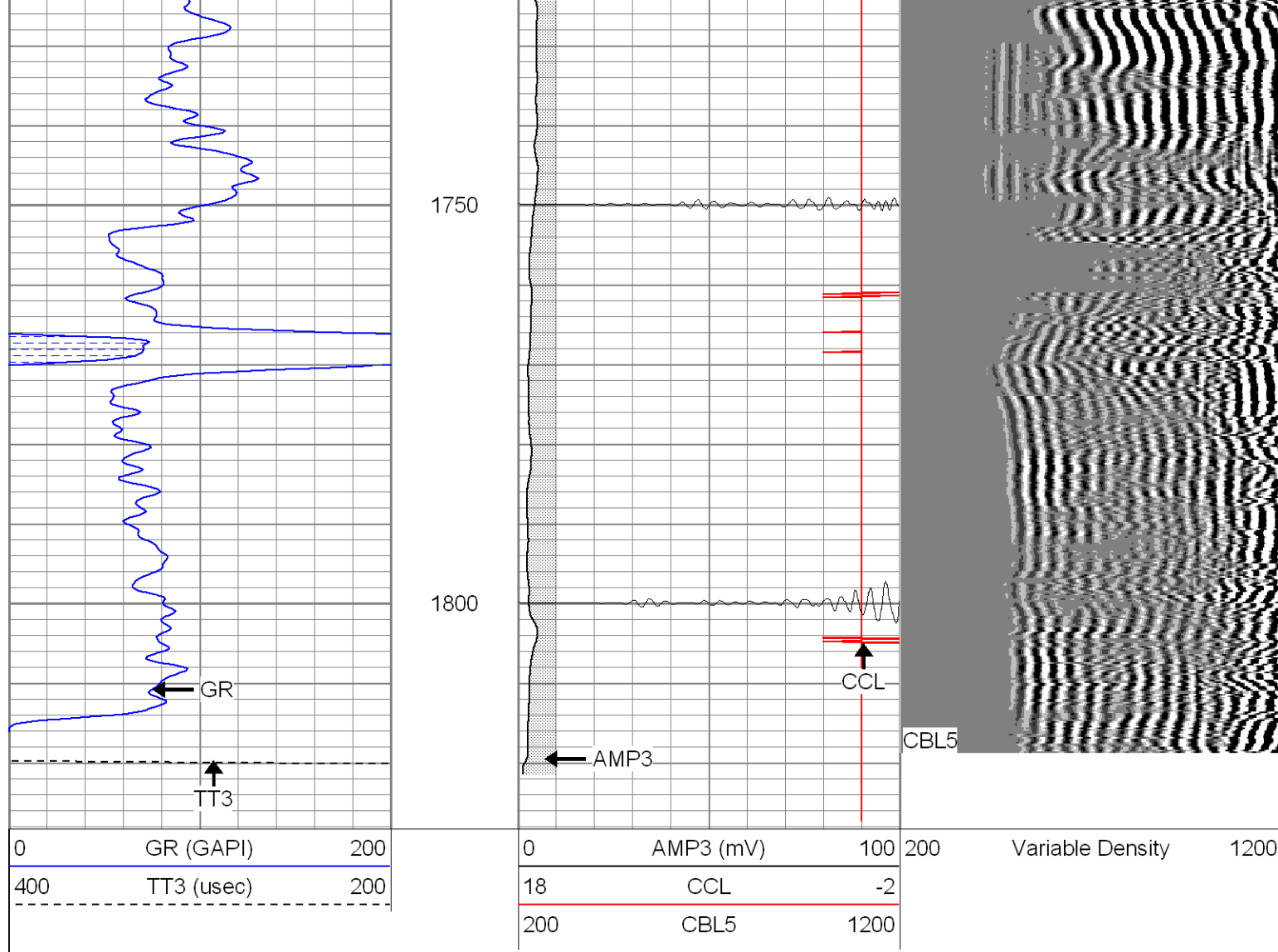
1400

1450

1500





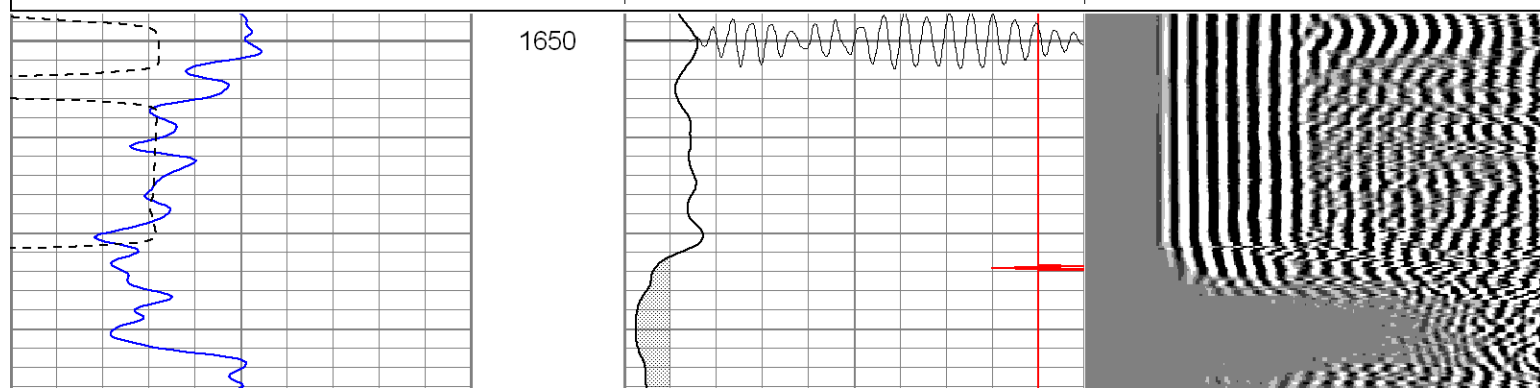
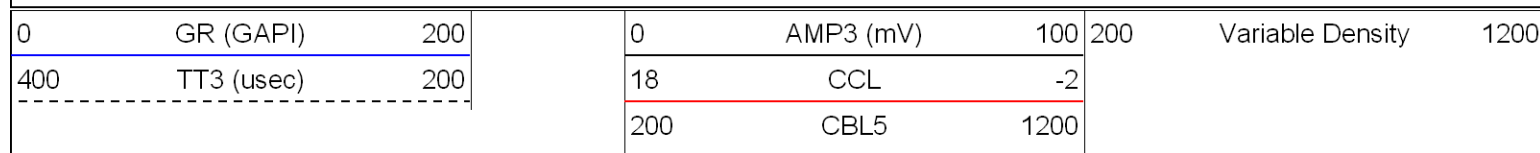


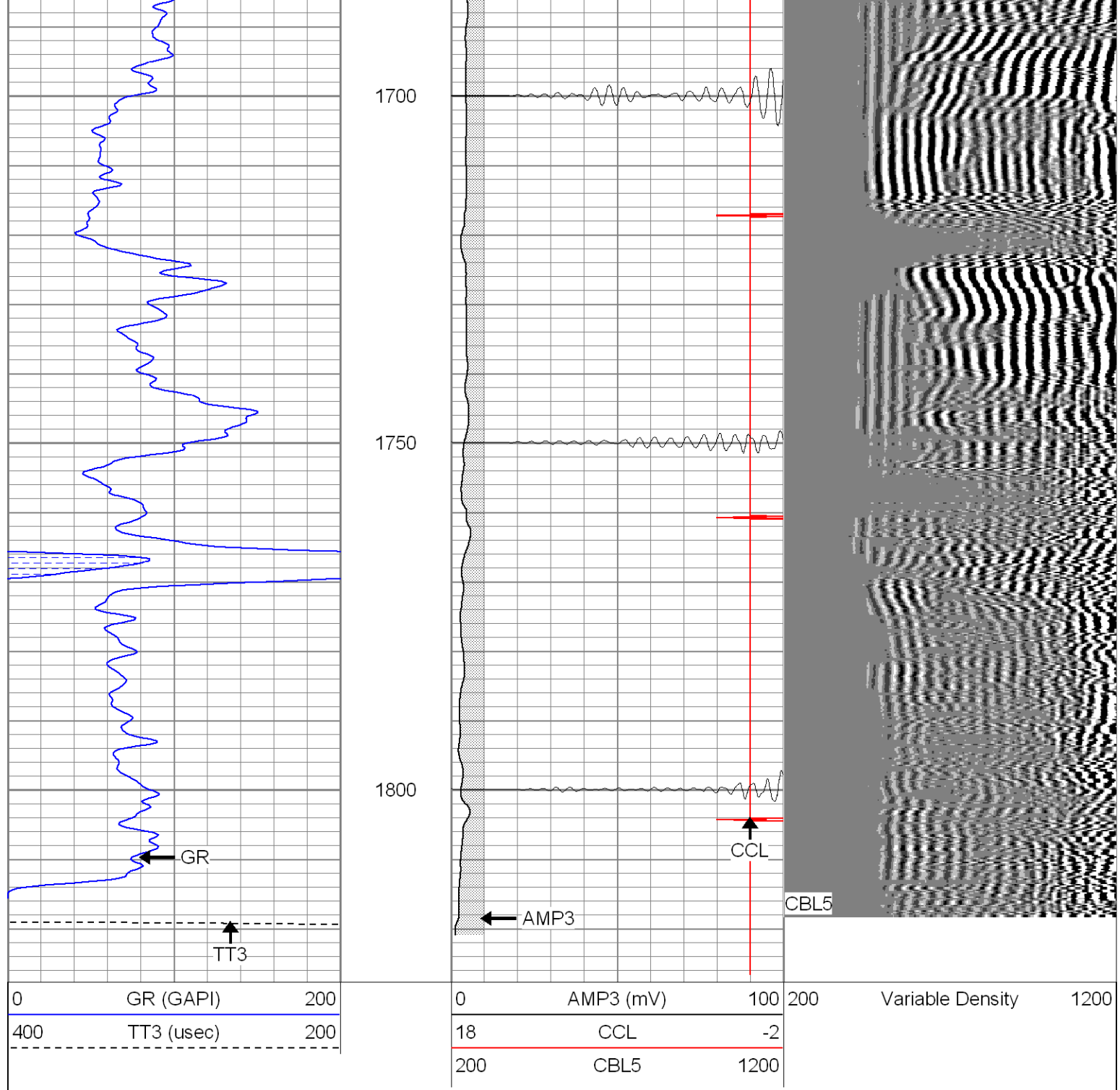
SUPERIOR

Black Lick, Pa.
Mercer, Pa.
Wooster, Oh.
Cleveland, Ok.
Trinidad, Co.

Repeat Section 0 PSI

Database File: ge32-02b43007.db
Dataset Pathname: pass1
Presentation Format: cblrt
Dataset Creation: Mon Apr 30 09:30:20 2007 by Log Warrior 7.0 STD Cas
Charted by: Depth in Feet scaled 1:240





Cement Bond Log Calibration Report

Serial Number:	Titan5		
Tool Model:	2		
Performed:	Wed Apr 25 14:45:31 2007		
Depth:	210.983	ft	
Casing Diameter:	5.5	in	
	3' Spacing	5' Spacing	
Signal Zero:	0	0	mV
Calibrated Amplitude:	85	85	mV
Reading at Signal Zero:	-0.02	0.00866699	V
Reading in Free Pipe:	1.3	1.2	V
Gain:	64.3939	71.3486	
Offset:	1.00700	0.010070	

Offset: 1.28/88 -0.6183/8

Gamma Ray Calibration Report

Serial Number:	Titan5	
Tool Model:	T2	
Performed:	Thu Mar 08 09:00:44 2007	
Calibrator Value:	1.0	GAPI
Background Reading:	0.0	cps
Calibrator Reading:	1.0	cps
Sensitivity:	1.2500	GAPI/cps