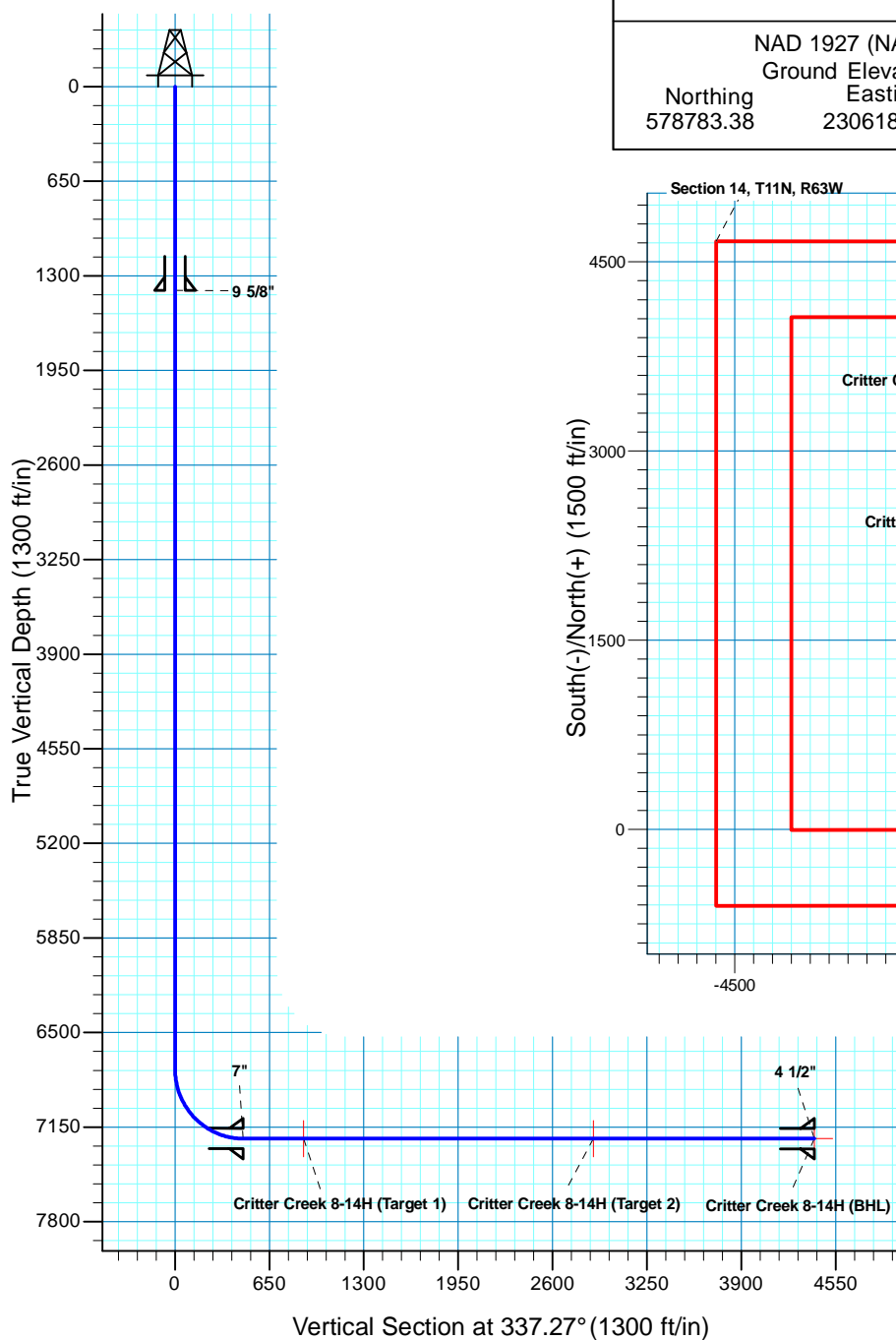
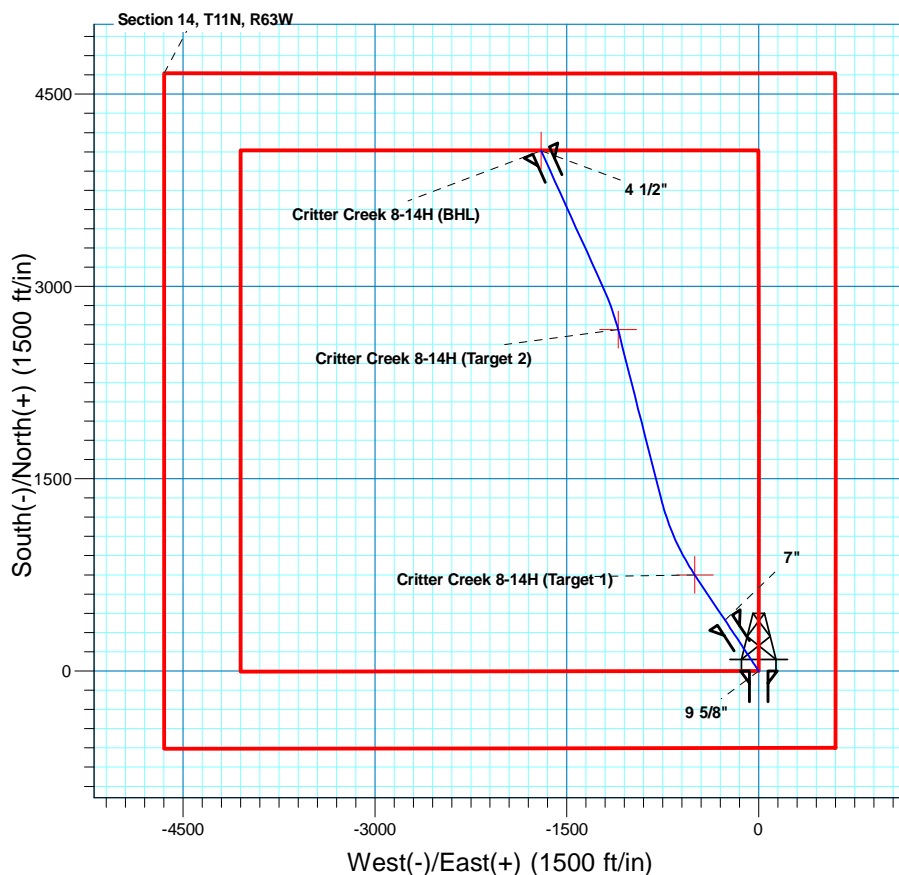


# Critter Creek 8-14H

Section 14 T11N R63W  
Weld County, CO



Surface Location			
NAD 1927 (NADCON CONUS) Colorado North 501			
Ground Elevation: 5213.0 RIG @ 5230.0ft (TBD)			
Northing	Easting	Latitude	Longitude
578783.38	2306186.07	40° 55' 0.862 N	104° 23' 31.859 W



**T M**  
Azimuths to True North  
Magnetic North: 8.86°  
Magnetic Field  
Strength: 53605.5nT  
Dip Angle: 67.59°  
Date: 1/11/2010  
Model: IGRF200510

Project: DJ - Hereford Ranch  
Site: Critter Creek 8-14H  
Well: Critter Creek 8-14H  
Plan: APD

## SECTION DETAILS

Sec	MD	Inc	Azi	TVD	+N/-S	+E/-W	DLeg	TFace	VSec	Target
1	0.0	0.00	0.00	0.0	0.0	0.0	0.00	0.00	0.0	
2	6751.5	0.00	0.00	6751.5	0.0	0.0	0.00	0.00	0.0	
3	7501.5	90.00	326.31	7229.0	397.3	-264.9	12.00	326.31	468.8	
4	7925.5	90.00	326.31	7229.0	750.0	-500.0	0.00	0.00	885.0	Critter Creek 8-14H (Target 1)
5	8571.0	90.00	345.68	7229.0	1336.9	-761.4	3.00	90.00	1527.3	Critter Creek 8-14H (Target 2)
6	9939.7	90.00	345.68	7229.0	2663.0	-1100.0	0.00	0.00	2881.2	Critter Creek 8-14H (Target 2)
7	10275.0	90.00	335.61	7229.0	2979.0	-1211.0	3.00	-90.00	3215.6	Critter Creek 8-14H (BHL)
8	11462.3	90.00	335.61	7229.0	4060.4	-1701.2	0.00	0.00	4402.3	Critter Creek 8-14H (BHL)

## TARGET DETAILS

Name	TVD	+N/-S	+E/-W	Northing	Easting	Latitude	Longitude	Shape
Critter Creek 8-14H (BHL)	7229.0	4060.4	-1701.2	582822.16	2304434.28	40° 55' 40.980 N	104° 23' 54.020 W	Point
Critter Creek 8-14H (Target 1)	7229.0	750.0	-500.0	579527.07	2305676.74	40° 55' 8.272 N	104° 23' 38.371 W	Point
Critter Creek 8-14H (Target 2)	7229.0	2663.0	-1100.0	581432.42	2305052.89	40° 55' 27.173 N	104° 23' 46.188 W	Point