

**EOG RESOURCES, INC.**

Well location, CRITTER CREEK #08-14H, located as shown in the SE 1/4 SE 1/4 of Section 14, T11N, R63W, 6th P.M., Weld County, Colorado.

## BASIS OF ELEVATION

SPOT ELEVATION AT THE NORTHEAST CORNER OF SECTION 1, T11N, R63W, 6th P.M. TAKEN FROM THE HEREFORD, QUADRANGLE, COLORADO, WELD COUNTY, 7.5 MINUTE QUAD (TOPOGRAPHIC MAP) PUBLISHED BY THE UNITED STATES DEPARTMENT OF THE INTERIOR, GEOLOGICAL SURVEY. SAID ELEVATION IS MARKED AS BEING 5352 FEET.

## BASIS OF BEARINGS

**BASIS OF BEARINGS IS A G.P.S. OBSERVATION.**



# CERTIFICATE

THIS IS TO CERTIFY THAT THE ABOVE PLANT WAS PREPARED FROM FIELD NOTES OF ACTUAL SURVEYS MADE BY ME OR UNDER MY SUPERVISION AND THAT THE SAME ARE TRUE AND CORRECT TO THE BEST OF MY KNOWLEDGE AND BELIEF.

REGISTERED LAND SURVEYOR  
REGISTRATION NO. 17492  
STATE OF COLORADO

## UTAH ENGINEERING &amp; LAND SURVEYING

85 SOUTH 200 EAST - VERNAL, UTAH 84078  
(435) 789-1017

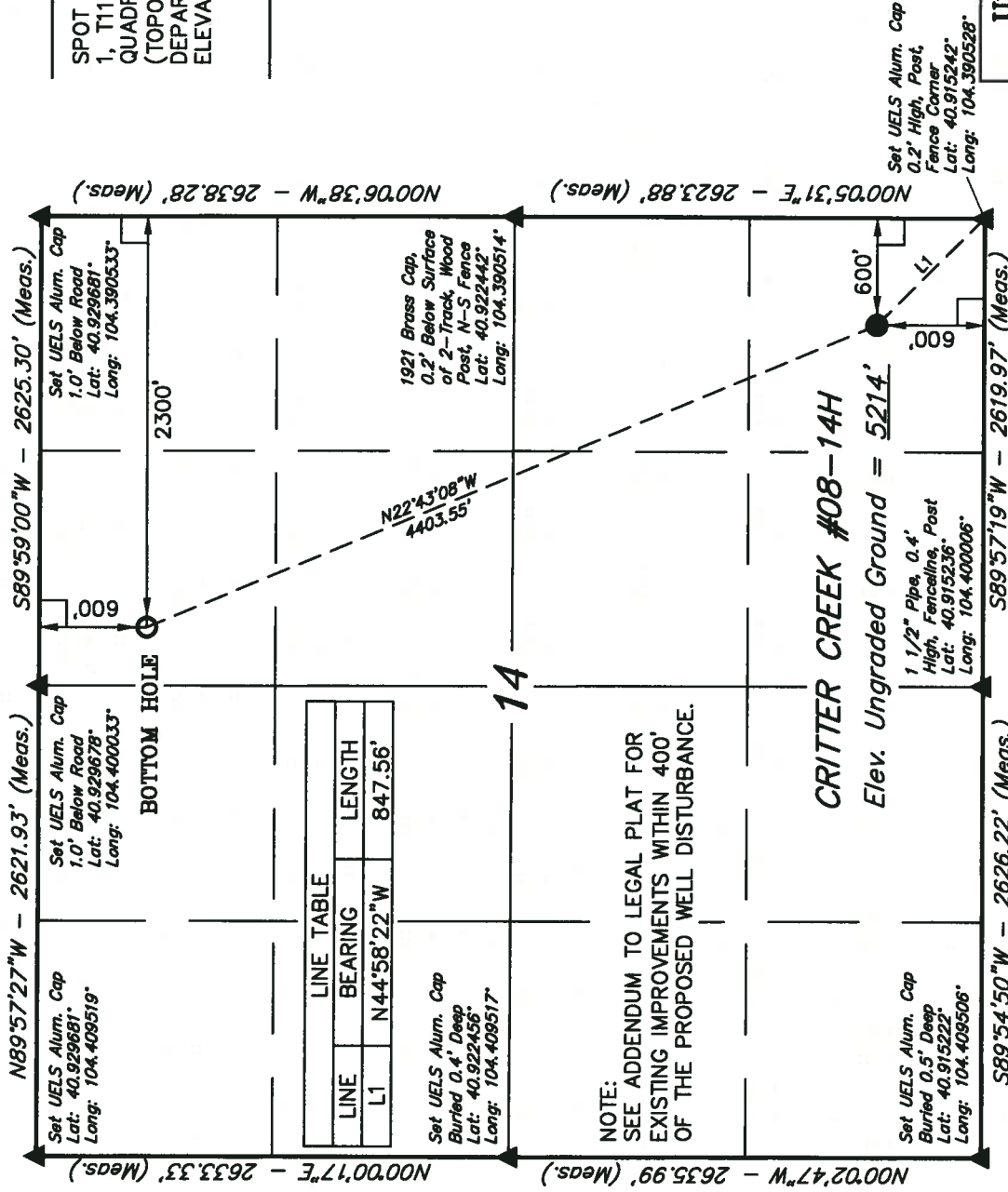
SCALE	DATE SURVEYED:	DATE DRAWN:
-------	----------------	-------------

PARTY	REFERENCES
-------	------------

[illegible]

**WEATHER**  
**COLD**

**EOG RESOURCES, INC.**



**LEGEND:**

- $\angle = 90^\circ$
- SYMBOL

- = PROPOSED WELL HEAD.

- ▲ = SECTION CORNERS LOCATED.

NAD 83 (TARGET BOTTOM HOLE)	NAD 83 (SURFACE LOCATION)
LATITUDE = 40°55'40.91" (40.928031)	LATITUDE = 40°55'00.79" (40.916886)
LONGITUDE = 104°23'55.86" (104.398850)	LONGITUDE = 104°23'33.70" (104.392964)
NAD 27 (TARGET BOTTOM HOLE)	NAD 27 (SURFACE LOCATION)
LATITUDE = 40°55'40.98" (40.928050)	LATITUDE = 40°55'00.86" (40.916906)
LONGITUDE = 104°23'54.02" (104.398339)	LONGITUDE = 104°23'31.86" (104.392183)
STATE PLANE NAD 83 (COLORADO NORTH)	STATE PLANE NAD 83 (COLORADO NORTH)
TARGET BOTTOM HOLE:	SURFACE LOCATION:
N: 1582823.794	N: 1578784.775
E: 3304284.661	E: 3306036.424
STATE PLANE NAD 27 (COLORADO NORTH)	STATE PLANE NAD 27 (COLORADO NORTH)
TARGET BOTTOM HOLE:	SURFACE LOCATION:
N: 582821.699	N: 578782.751
E: 2304434.050	E: 2306185.778

**PDOP = 1.3**