

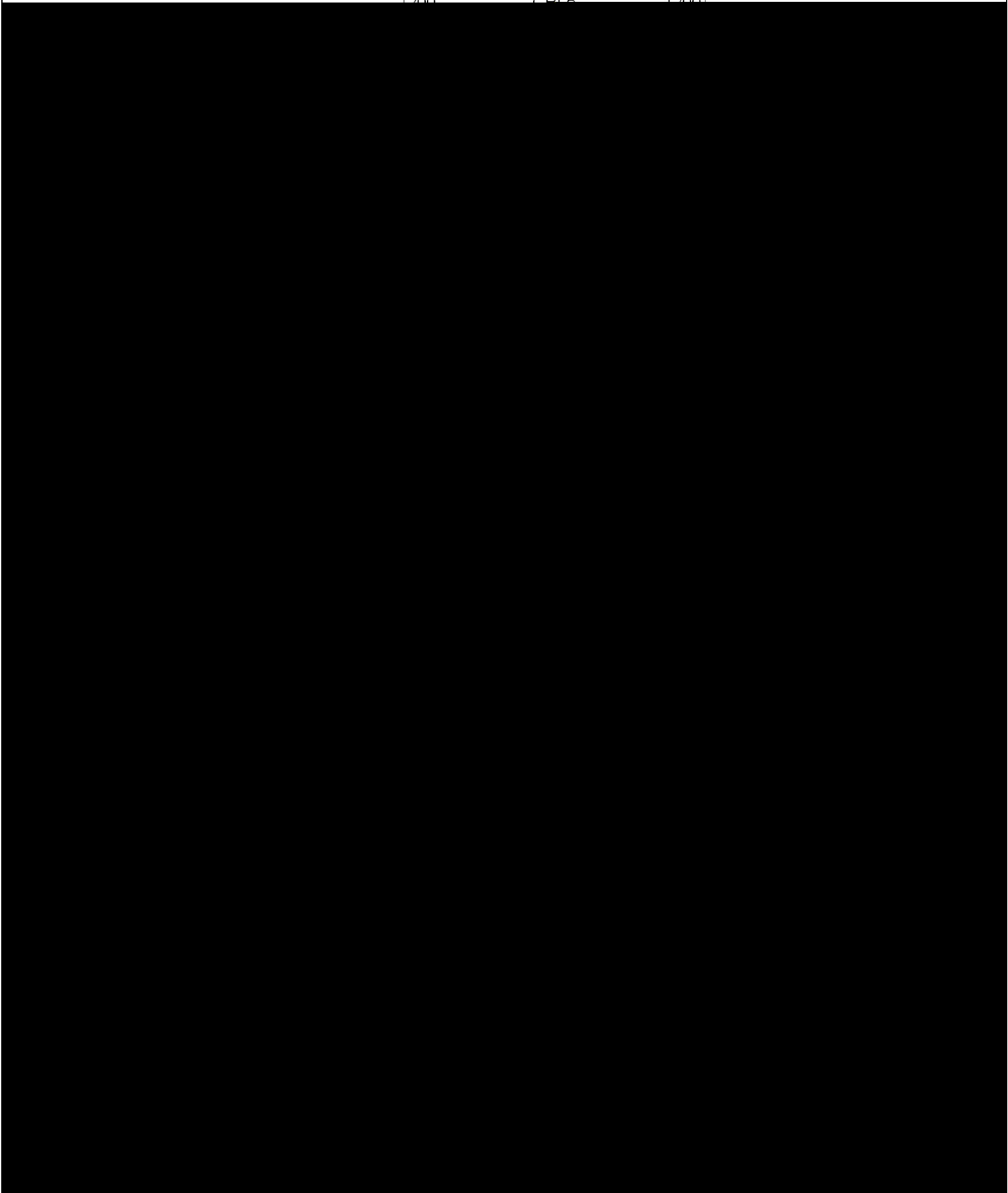
CompanyXTO Energy Inc.
Well Apache Canyon 13-07
Field Purgatorie River
County Las Animas
State CO

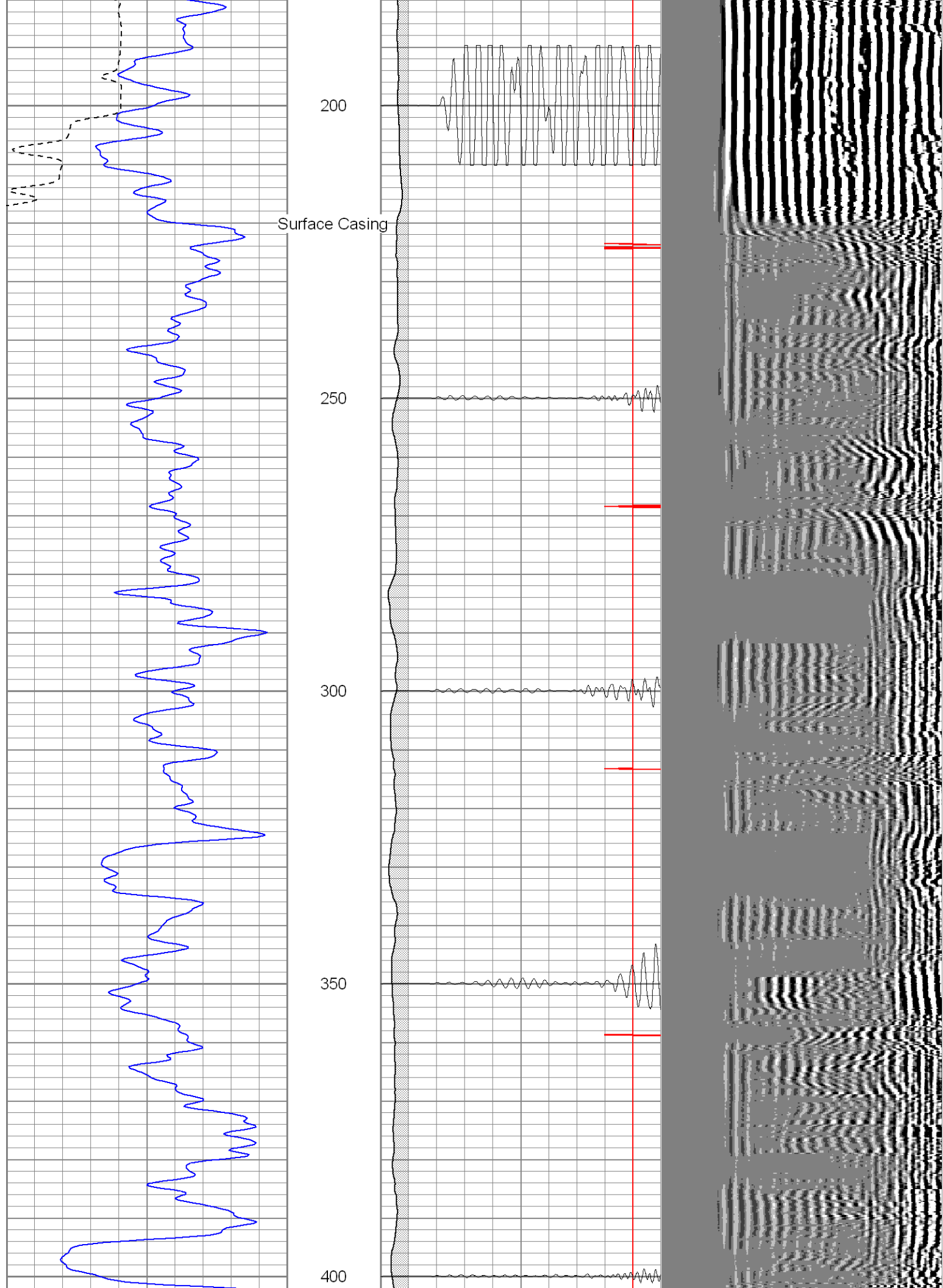
Date
Run Number
Depth Driller
Depth Logger
Bottom Logged Inter
Top Log Interval
Open Hole Size
Type Fluid
Density / Viscosity
Max. Recorded Tem
Estimated Cement T
Time Well Ready
Time Logger on Bot
Equipment Number
Location
Recorded By
Witnessed By

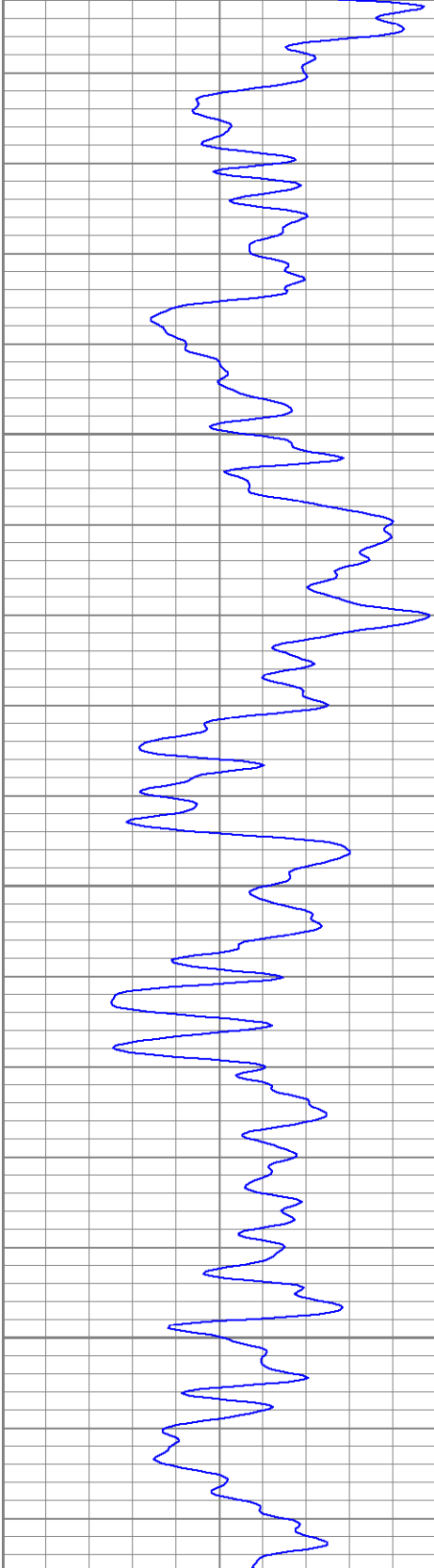
Run Number
Casing Record
Surface String
Prot. String
Production String
Liner

Database File: ac13-07b100606.db
Dataset Pathname: pass2
Presentation Format: cblrt
Dataset Creation: Fri Oct 06 10:18:28 2006 by Log Warrior 7.0 STD Cas
Charted by: Depth in Feet scaled 1:240

0	GR (GAPI)	200	0	AMP3 (mV)	100	200	Variable Density	1200
400	TT3 (usec)	200	18	CCL	-2			
-----			200	CBL5	1200			



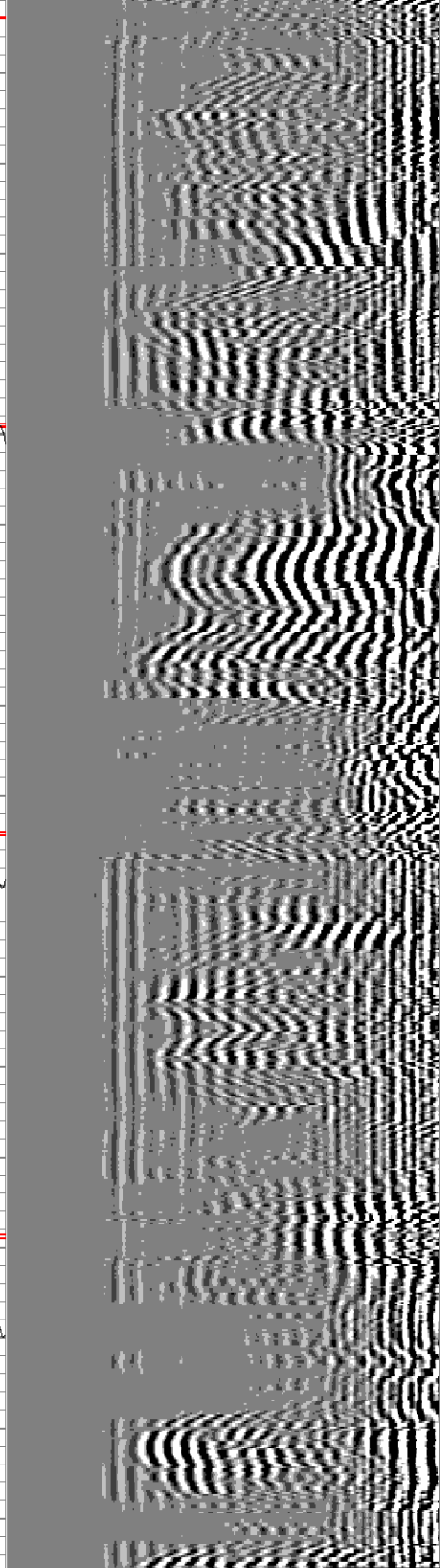


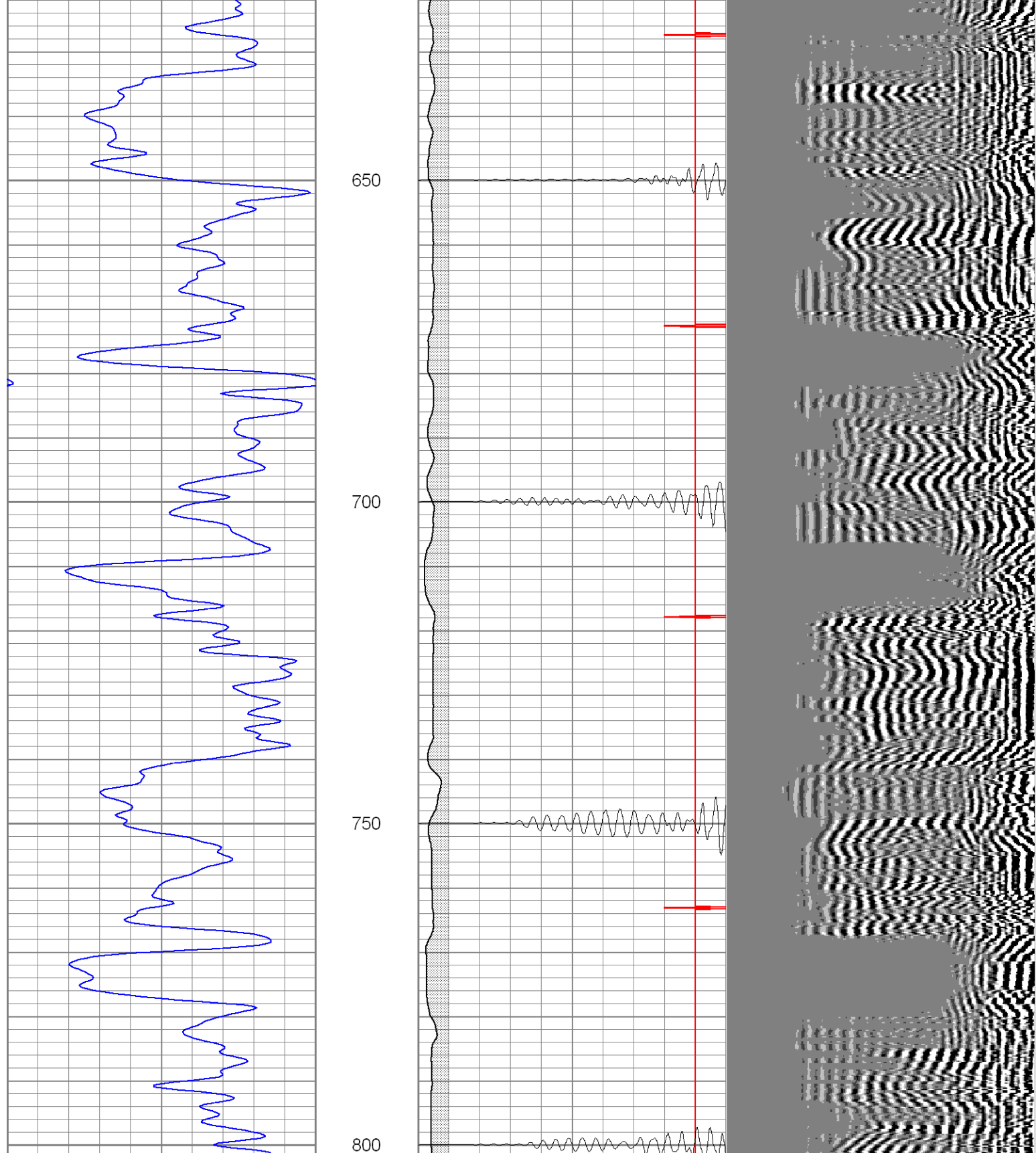


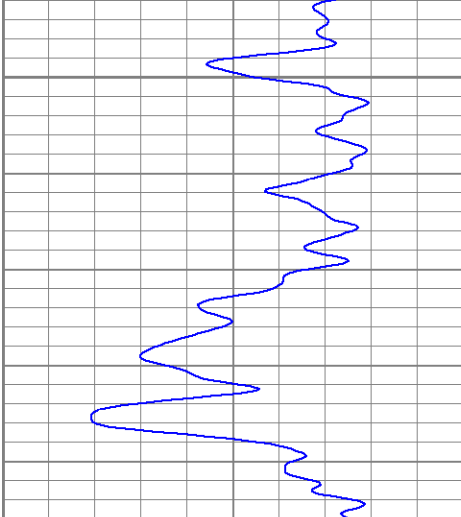
450

500

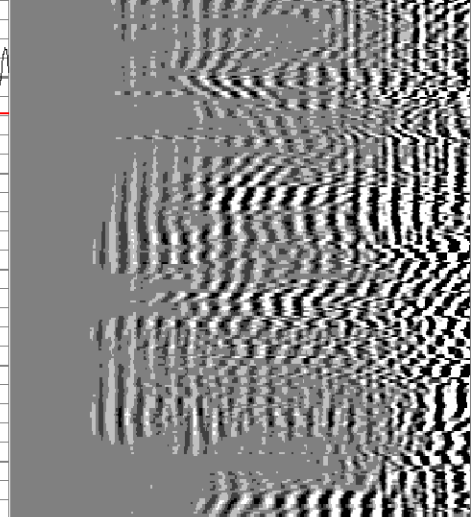
550

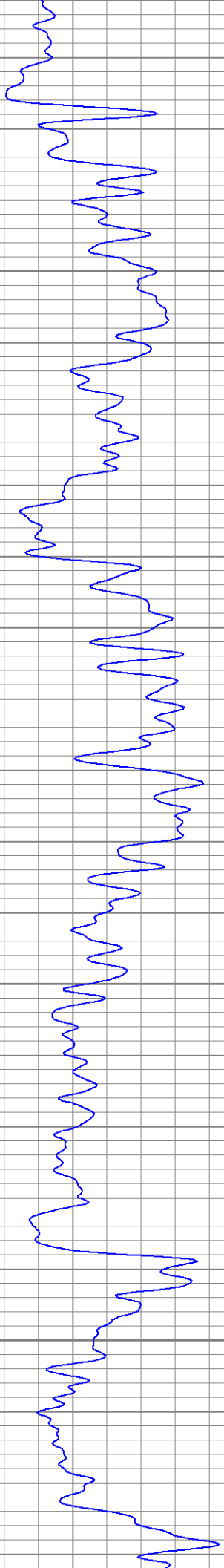






850



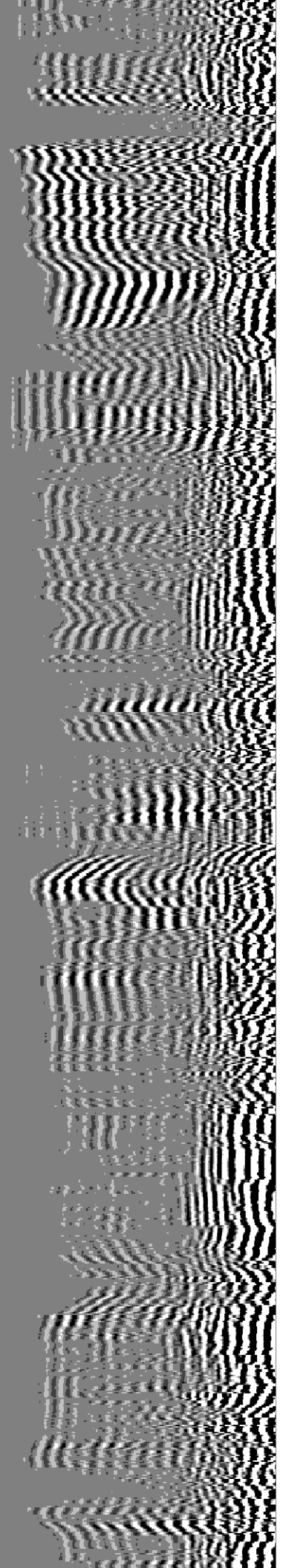


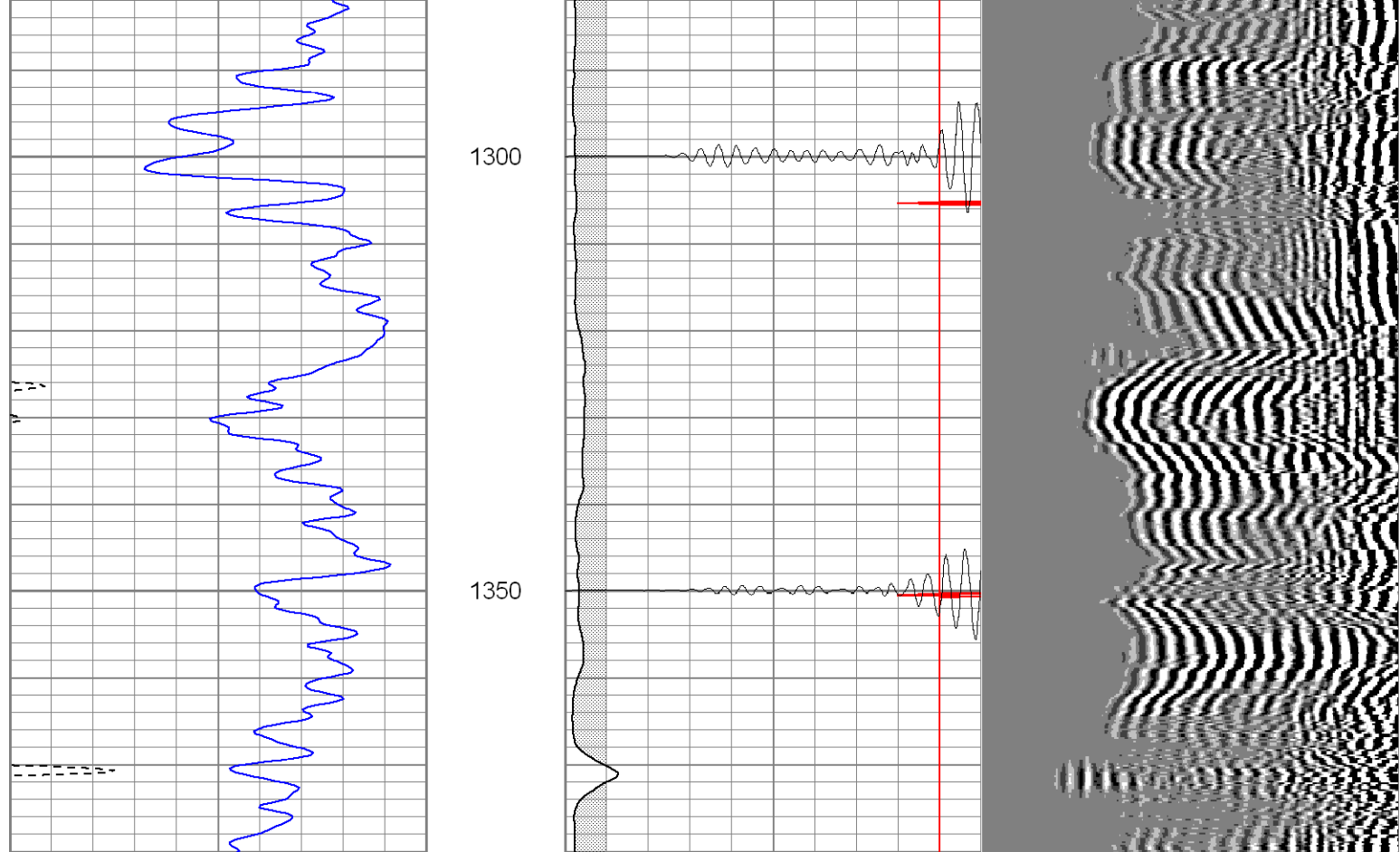
1100

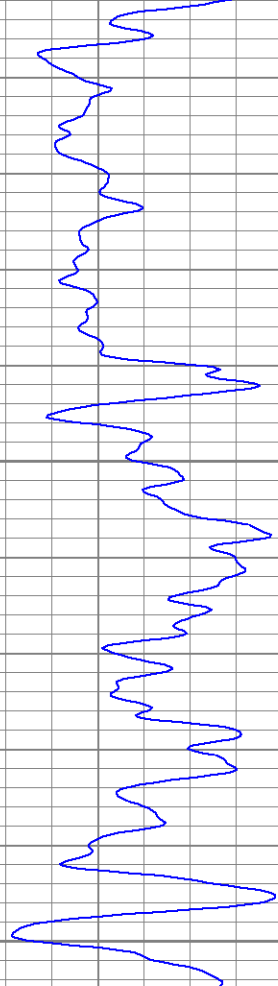
1150

1200

1250

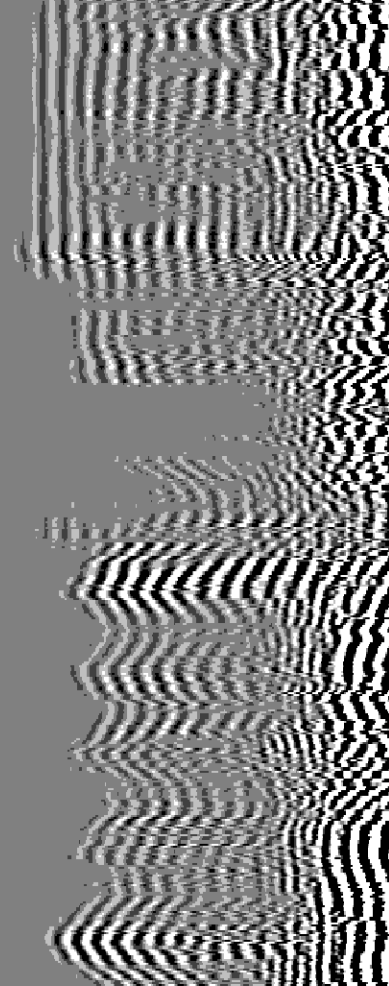
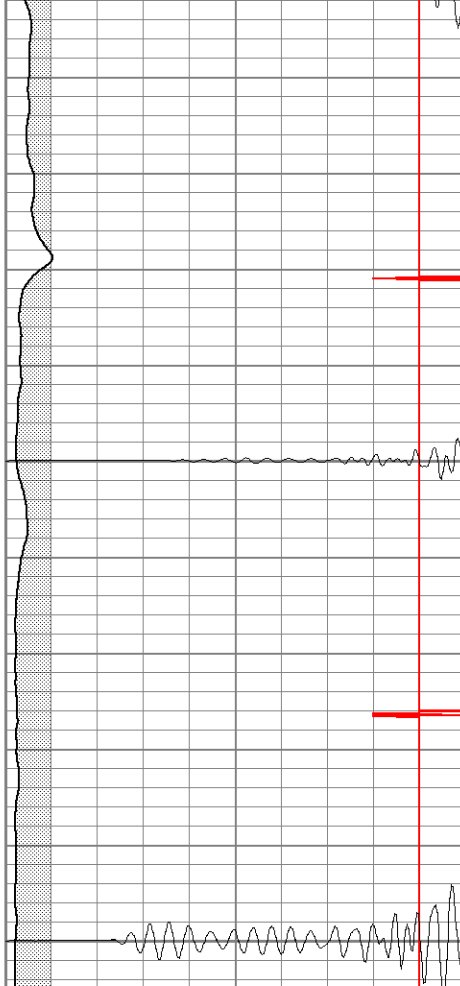


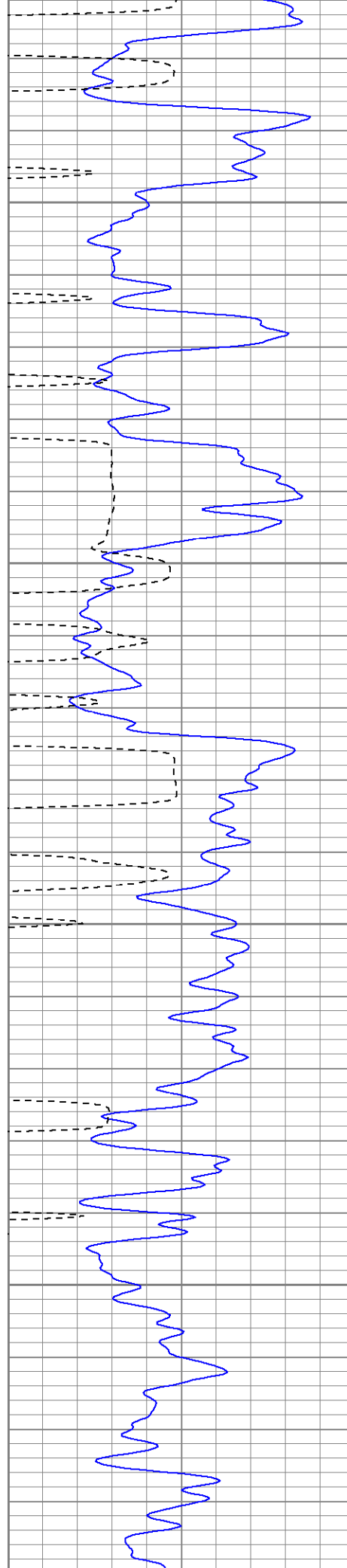




1550

1600



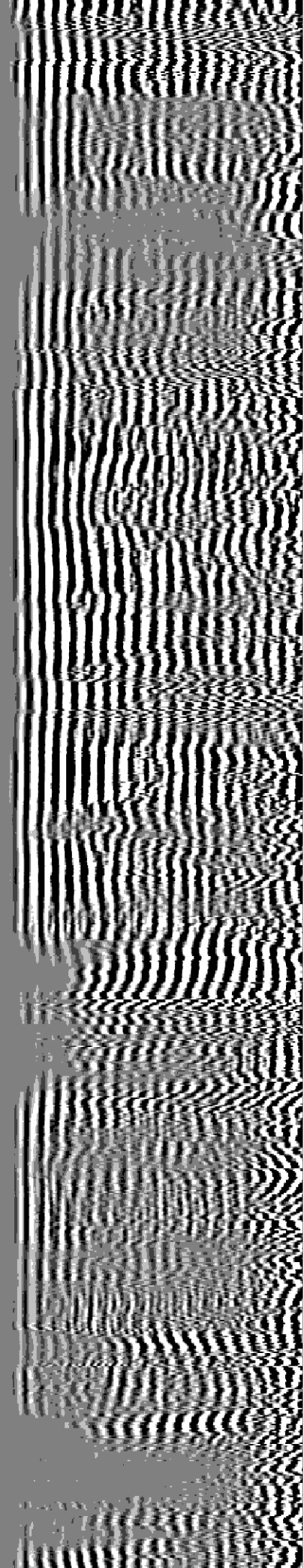
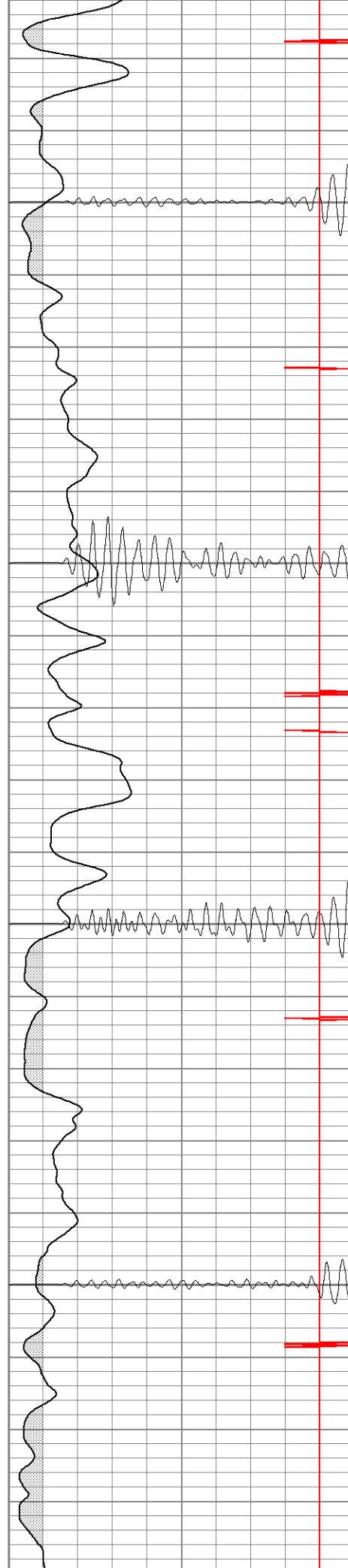


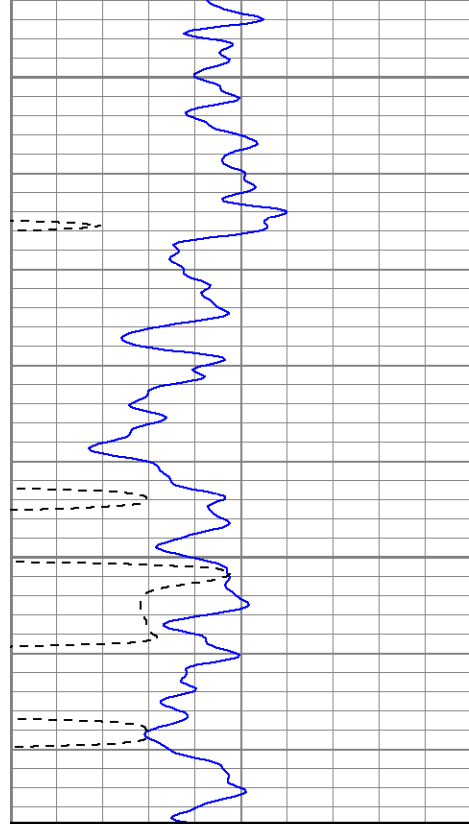
1750

1800

1850

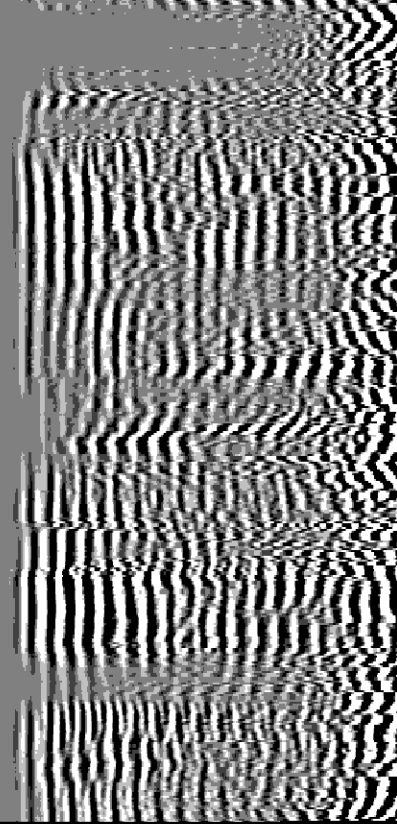
1900

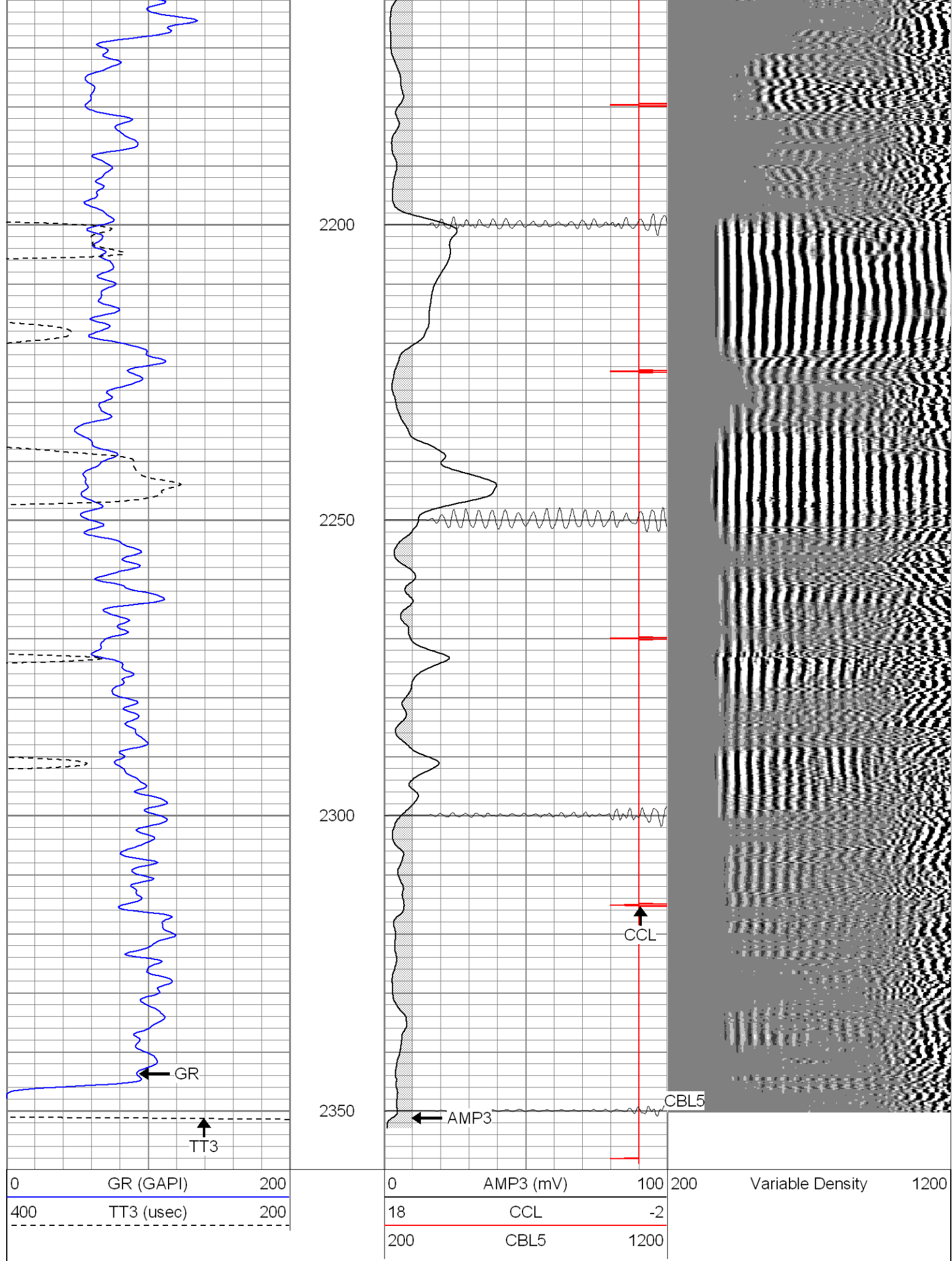




1950

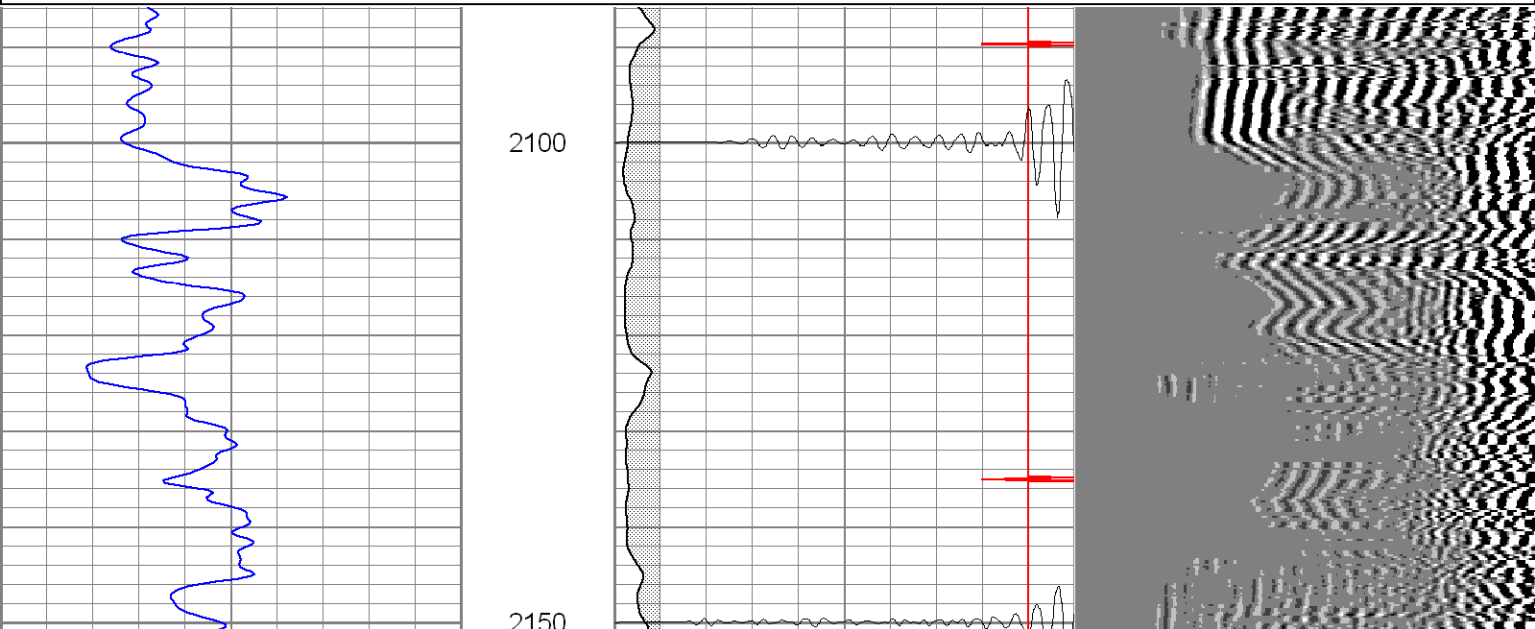
2000

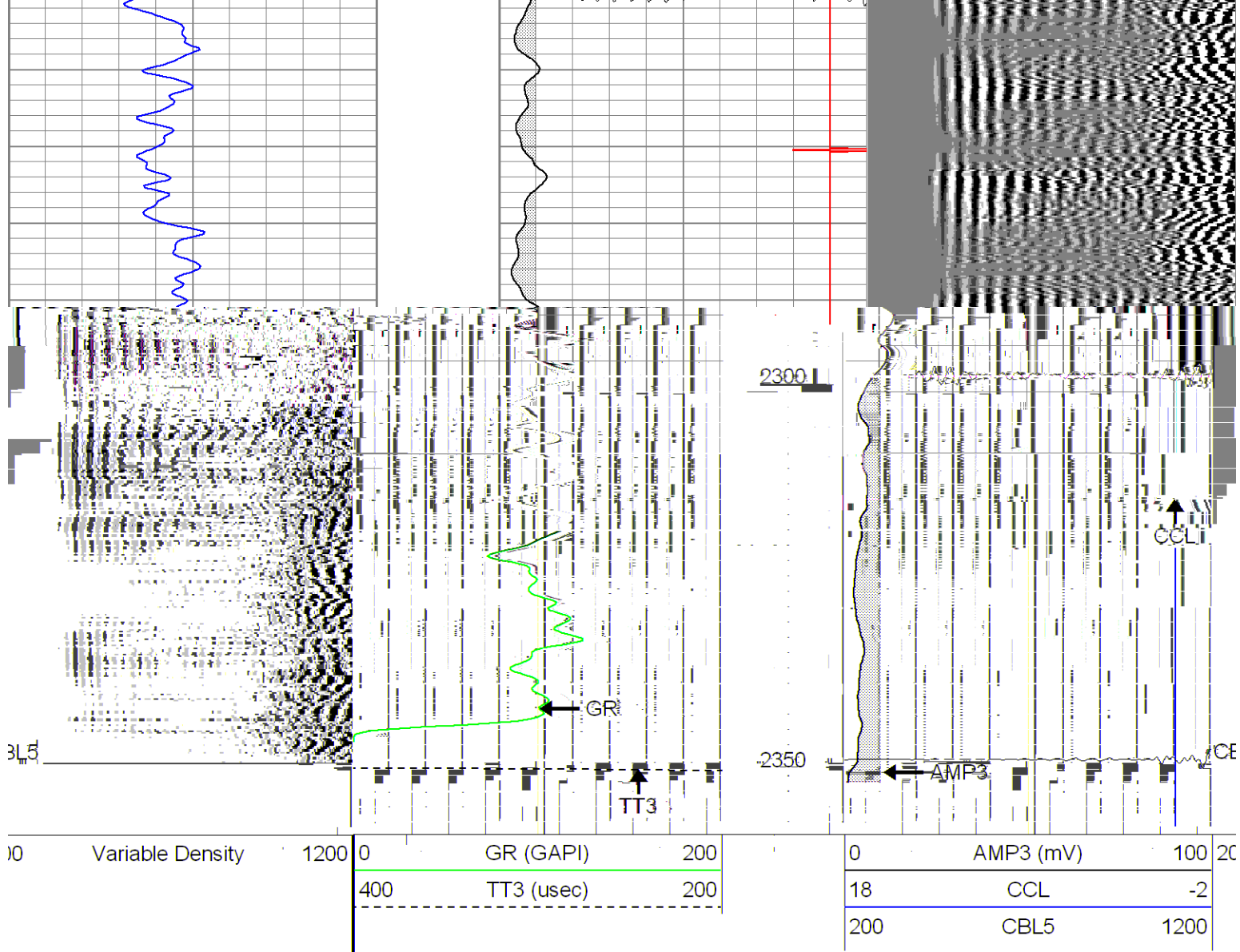




Database File: ac13-07b100606.db
Dataset Pathname: pass1
Presentation Format: cblrt
Dataset Creation: Fri Oct 06 09:53:04 2006 by Log Warrior 7.0 STD Cas
Charted by: Depth in Feet scaled 1:240

0	GR (GAPI)	200	0	AMP3 (mV)	100	200	Variable Density	1200
400	TT3 (usec)	200	18	CCL	-2			
			200	CBL5	1200			





Cement Bond Log Calibration Report

Serial Number:	Titan5	
Tool Model:	2	
Performed:	Wed Oct 04 12:16:23 2006	
Depth:	210.983	ft
Casing Diameter:	5.5	in
	3' Spacing	5' Spacing
Signal Zero:	0	0
Calibrated Amplitude:	85	85
Reading at Signal Zero:	-0.02	0.00866699
Reading in Free Pipe:	1.4	1.4
Gain:	59.8592	61.0925
Offset:	1.19718	-0.529488

Gamma Ray Calibration Report

Serial Number:	Titan5	
Tool Model:	T2	
Performed:	Thu Aug 17 10:26:00 2006	
Calibrator Value:	1.0	GAPI
Background Reading:	0.0	cm

Background Reading:	0.0	cps
Calibrator Reading:	1.0	cps
Sensitivity:	1.2000	GAPI/cps