

EOG RESOURCES, INC.
CRITTER CREEK #08-14H
LOCATED IN WELD COUNTY, COLORADO
SECTION 14, T11N, R63W, 6th P.M.

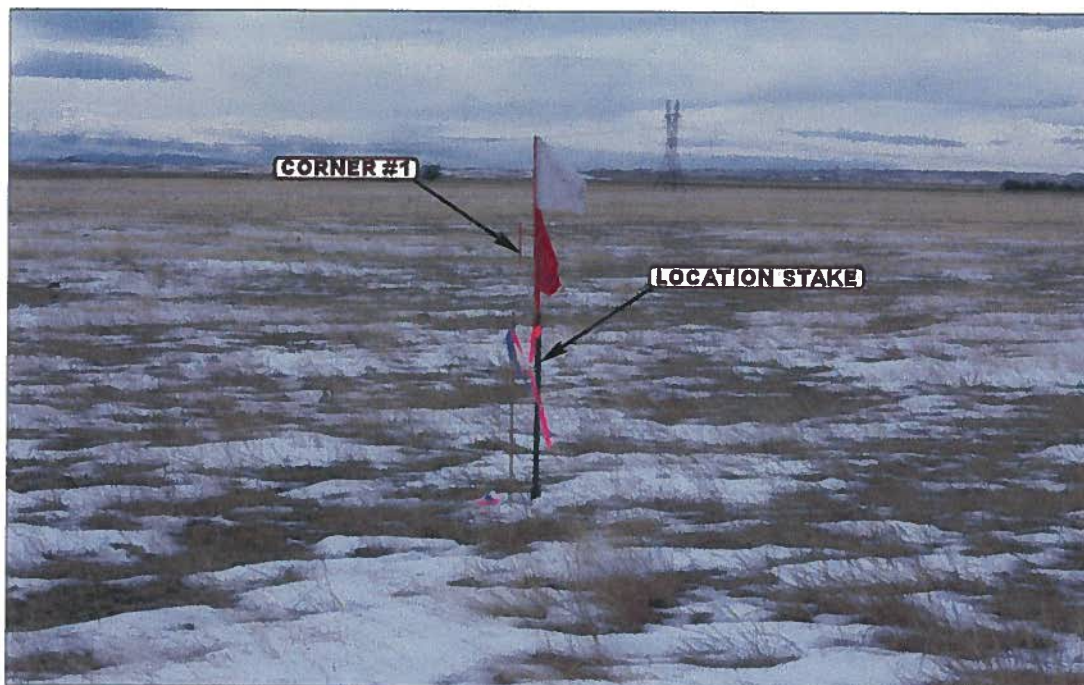


PHOTO: VIEW FROM LOCATION STAKE TO CORNER #1

CAMERA ANGLE: WESTERLY

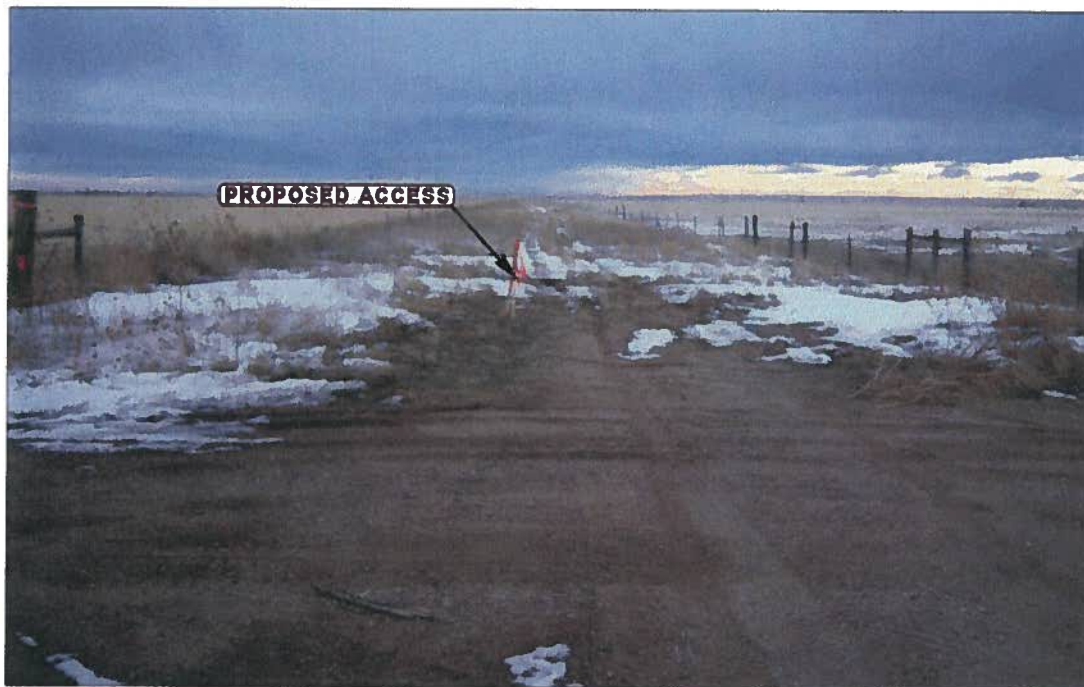


PHOTO: VIEW FROM BEGINNING OF PROPOSED ACCESS

CAMERA ANGLE: SOUTHERLY



- Since 1964 -

UELS

Uintah Engineering & Land Surveying

85 South 200 East Vernal, Utah 84078
435-789-1017 FAX (435) 789-1813

LOCATION PHOTOS

12 **22** **09**
MONTH DAY YEAR

PHOTO

P 1

TAKEN BY: A.F.

DRAWN BY: J.H.

REVISED: 00-00-00

EOG RESOURCES, INC.
CRITTER CREEK #08-14H
LOCATED IN WELD COUNTY, COLORADO
SECTION 14, T11N, R63W, 6th P.M.

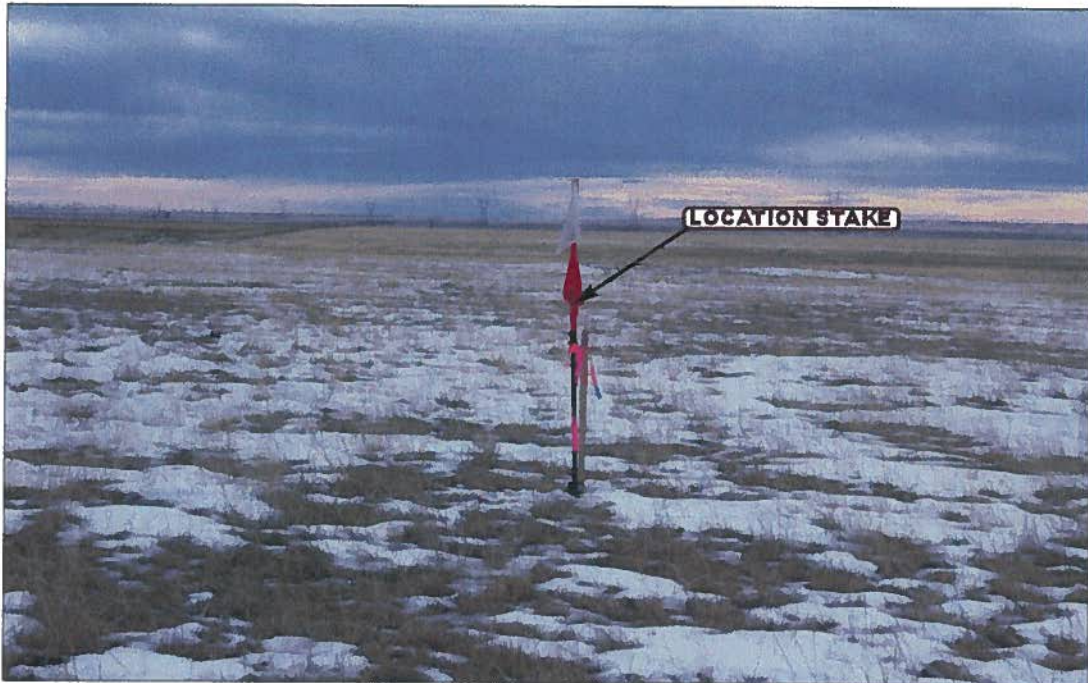


PHOTO: VIEW OF LOCATION STAKE

CAMERA ANGLE: SOUTHERLY



PHOTO: VIEW OF LOCATION STAKE

CAMERA ANGLE: WESTERLY



UELS Uintah Engineering & Land Surveying
85 South 200 East Vernal, Utah 84078
435-789-1017 FAX (435) 789-1813

- Since 1964 -

LOCATION PHOTOS

12 **22** **09**
MONTH DAY YEAR

PHOTO
P 3

TAKEN BY: A.F.

DRAWN BY: J.H.

REVISED: 00-00-00

EOG RESOURCES, INC.
CRITTER CREEK #08-14H
LOCATED IN WELD COUNTY, COLORADO
SECTION 14, T11N, R63W, 6th P.M.



PHOTO: VIEW OF REFERENCE AREA

CAMERA ANGLE: NORTHERLY



PHOTO: VIEW OF REFERENCE AREA

CAMERA ANGLE: EASTERLY



- Since 1964 -

UELS

Uintah Engineering & Land Surveying
85 South 200 East Vernal, Utah 84078
(435) 789-1017 * FAX (435) 789-1813

**REFERENCE AREA
PHOTOS**

12 **22** **09**
MONTH DAY YEAR

TAKEN BY: A.F.

DRAWN BY: J.H.

REVISED: 00-00-00

PHOTO
REF1

EOG RESOURCES, INC.
CRITTER CREEK #08-14H
LOCATED IN WELD COUNTY, COLORADO
SECTION 14, T11N, R63W, 6th P.M.

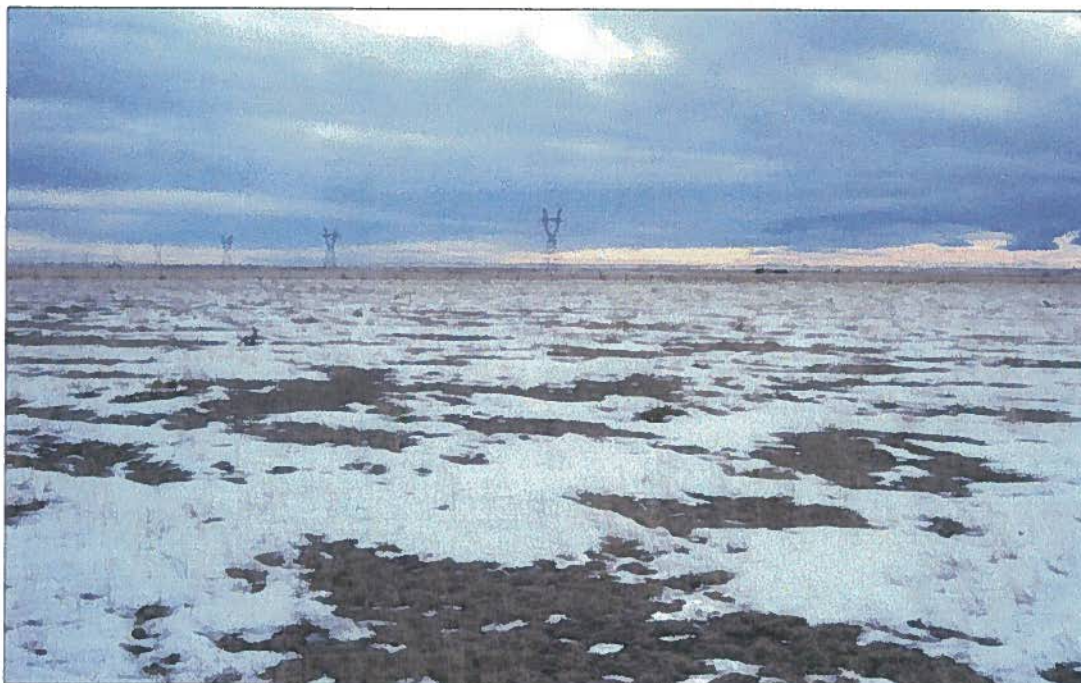


PHOTO: VIEW OF REFERENCE AREA

CAMERA ANGLE: SOUTHERLY



PHOTO: VIEW OF REFERENCE AREA

CAMERA ANGLE: WESTERLY



- Since 1964 -

UELS

Uintah Engineering & Land Surveying
85 South 200 East Vernal, Utah 84078
(435) 789-1017 * FAX (435) 789-1813

**REFERENCE AREA
PHOTOS**

12 22 09
MONTH DAY YEAR

**PHOTO
REF2**

TAKEN BY: A.F. DRAWN BY: J.H. REVISED: 00-00-00