

EOG RESOURCES, INC.

ADDENDUM TO LEGAL PLAT FOR

CRITTER CREEK #08-14H

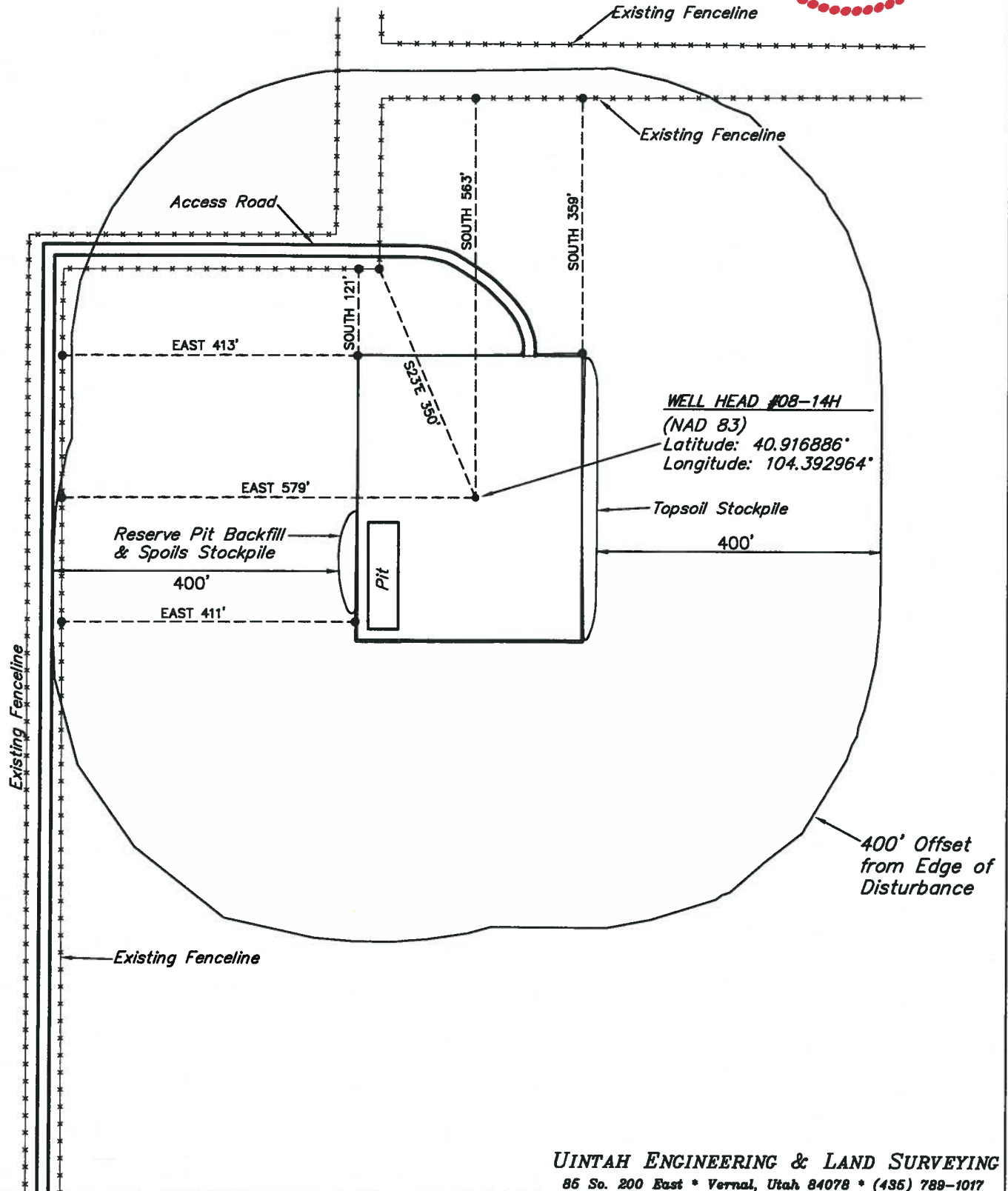
SECTION 14, T11N, R63W, 6th P.M.

600' FSL 600' FEL

SCALE: 1" = 200'

DATE: 12-21-09

DRAWN BY: D.R.B.



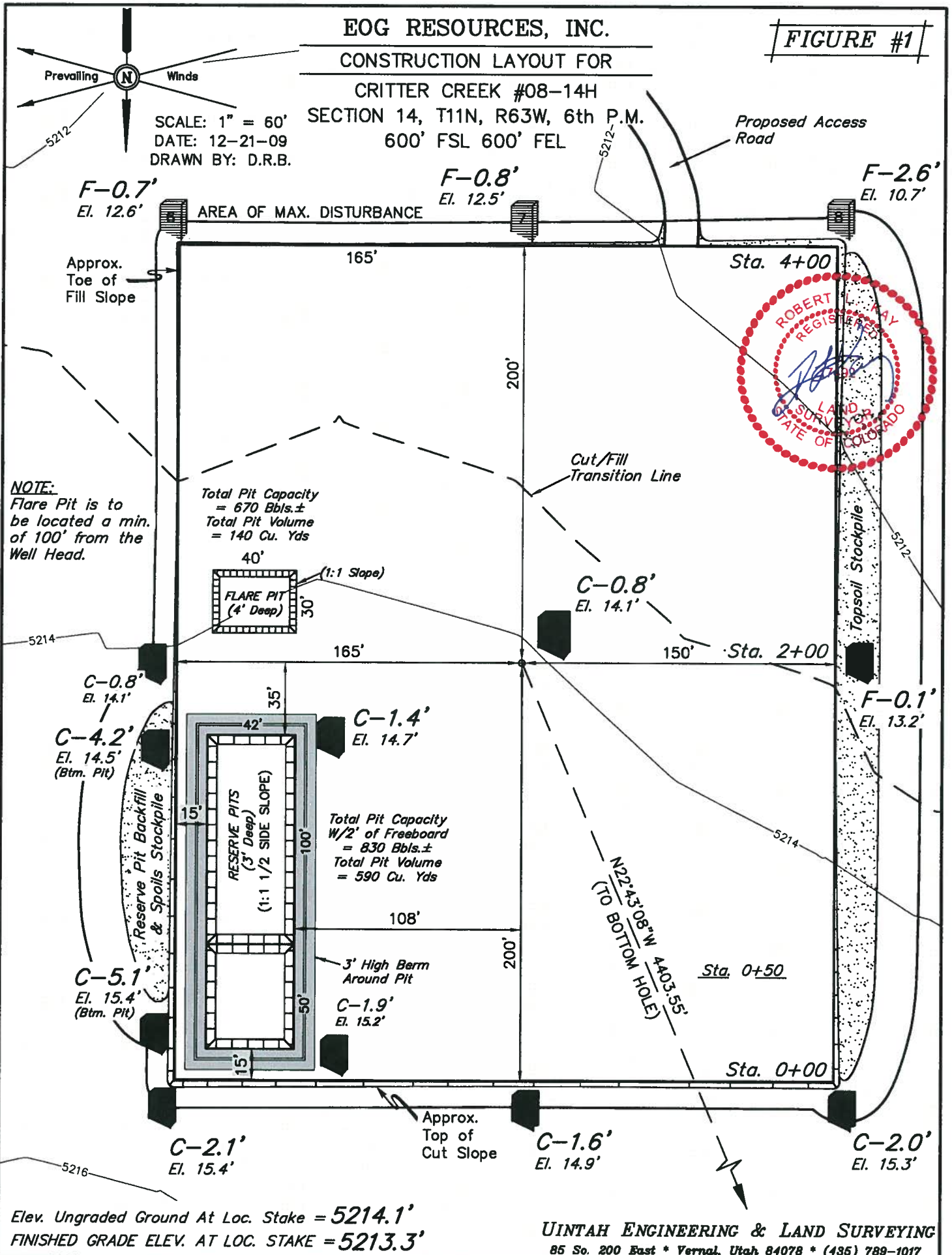
# EOG RESOURCES, INC.

## CONSTRUCTION LAYOUT FOR

CRITTER CREEK #08-14H  
SECTION 14, T11N, R63W, 6th P.M.  
600' FSL 600' FEL

FIGURE #1

SCALE: 1" = 60'  
DATE: 12-21-09  
DRAWN BY: D.R.B.



# EOG RESOURCES, INC.

FIGURE #2

## CONSTRUCTION LAYOUT CROSS SECTION FOR

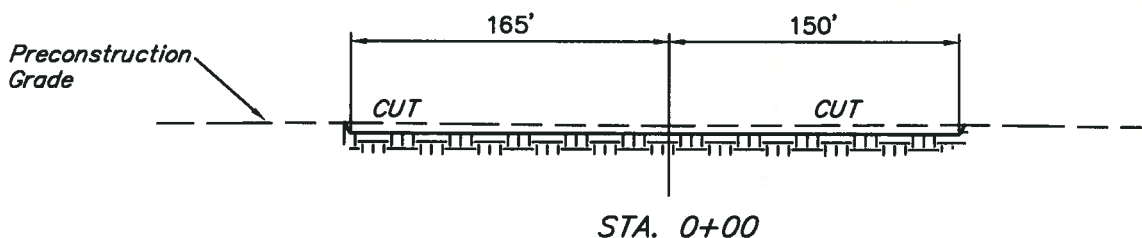
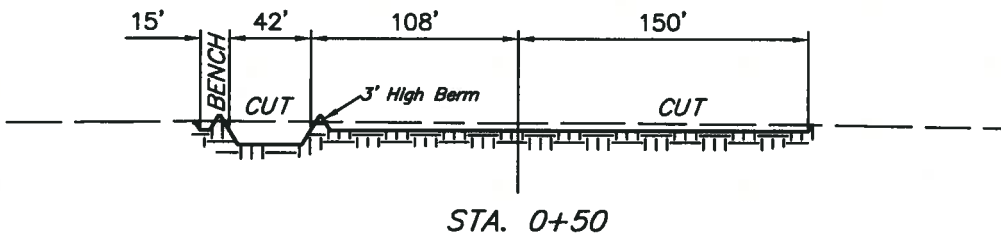
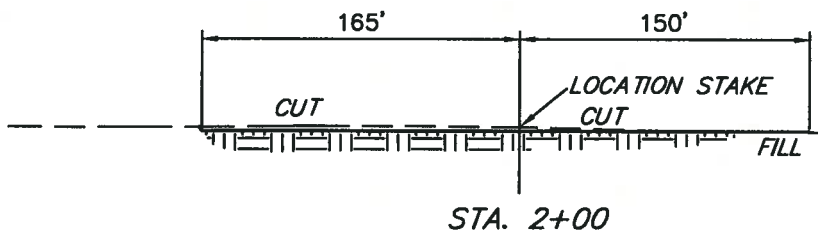
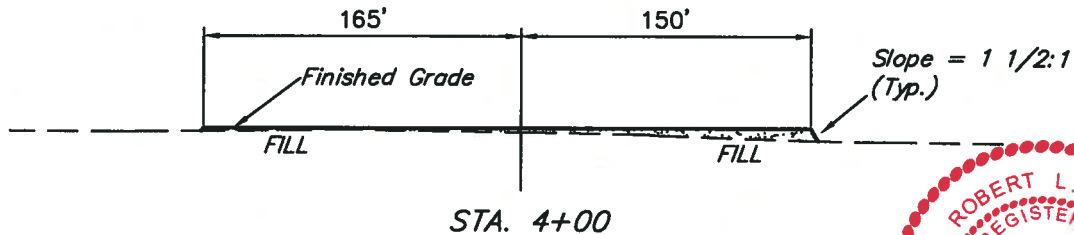
CRITTER CREEK #08-14H

SECTION 14, T11N, R63W, 6th P.M.

600' FSL 600' FEL

1" = 40'  
X-Section  
Scale  
1" = 100'

DATE: 12-21-09  
DRAWN BY: D.R.B.



### NOTE:

Topsoil should not be Stripped Below Finished Grade on Substructure Area.

APPROXIMATE ACREAGES  
WELL SITE DISTURBANCE = ± 3.678 ACRES  
ACCESS ROAD DISTURBANCE = ± 3.967 ACRES  
TOTAL = ± 7.645 ACRES

\* NOTE:  
FILL QUANTITY INCLUDES 5% FOR COMPACTION

### APPROXIMATE YARDAGES

(6") Topsoil Stripping = 2,410 Cu. Yds.  
Remaining Location = 2,450 Cu. Yds.  
TOTAL CUT = 4,860 CU.YDS.  
FILL = 2,150 CU.YDS.

EXCESS MATERIAL = 2,710 Cu. Yds.  
Topsoil & Pit Backfill = 2,710 Cu. Yds.  
(1/2 Pit Vol.)  
EXCESS UNBALANCE = 0 Cu. Yds.  
(After Interim Rehabilitation)

UINTAH ENGINEERING & LAND SURVEYING  
85 So. 200 East \* Vernal, Utah 84078 \* (435) 789-1017



SCALE: 1" = 60'  
DATE: 12-21-09  
DRAWN BY: D.R.B.

# EOG RESOURCES, INC.

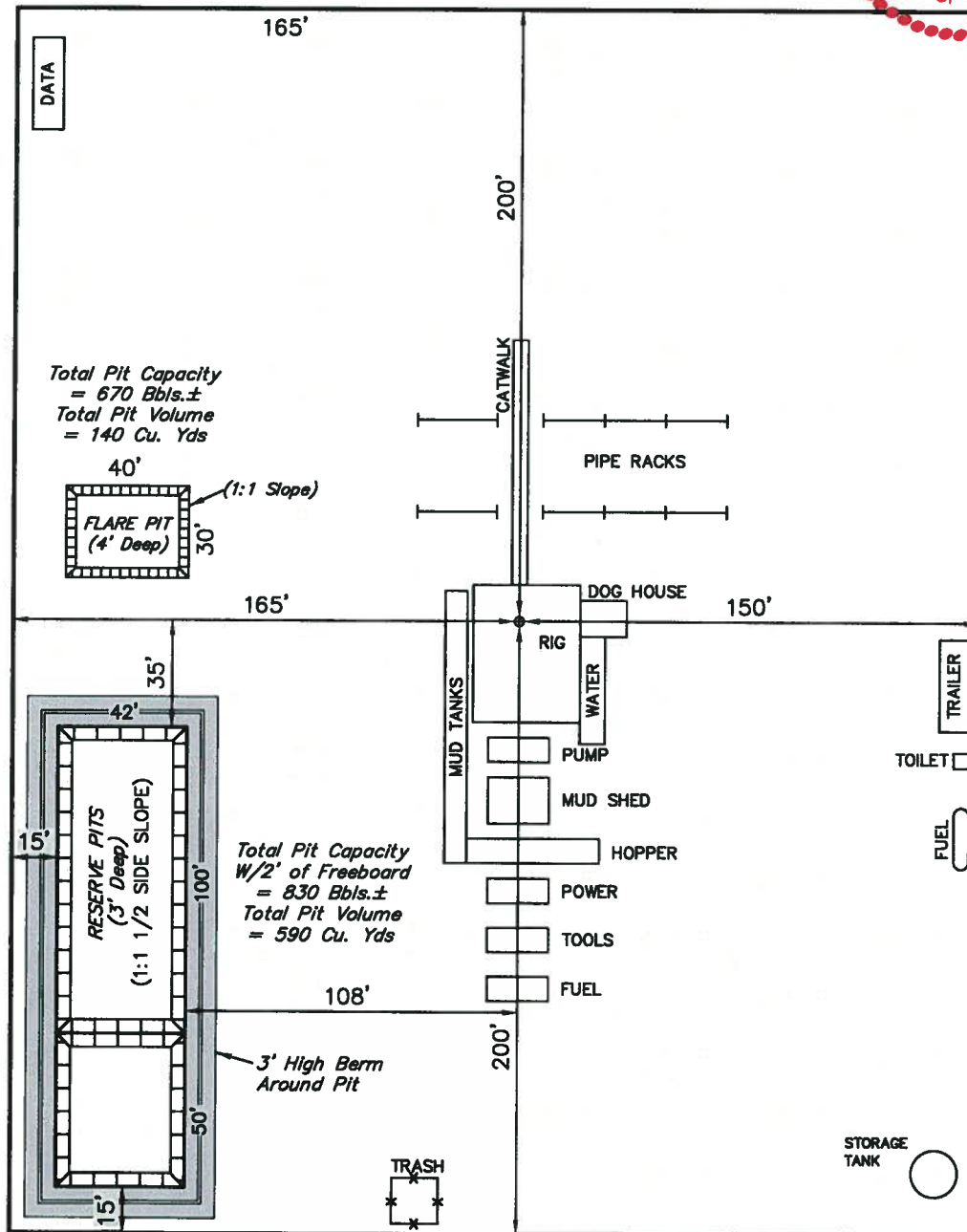
## TYPICAL RIG LAYOUT FOR

CRITTER CREEK #08-14H  
SECTION 14, T11N, R63W, 6th P.M.  
600' FSL 600' FEL

FIGURE #3



**NOTE:**  
Flare Pit is to  
be located a min.  
of 100' from the  
Well Head.





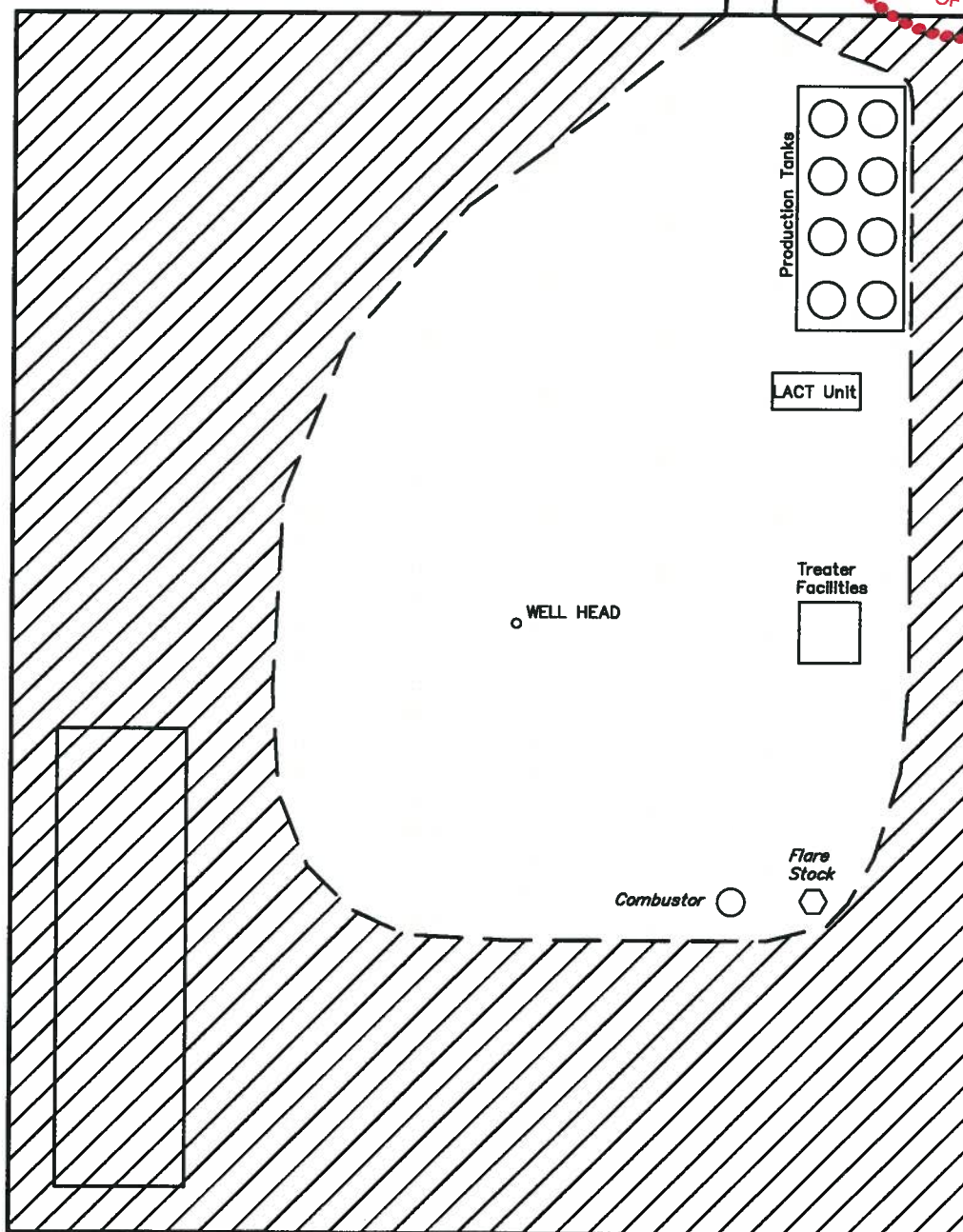
SCALE: 1" = 60'  
DATE: 12-21-09  
DRAWN BY: D.R.B.

EOG RESOURCES, INC.  
RECLAMATION DIAGRAM FOR  
CRITTER CREEK #08-14H  
SECTION 14, T11N, R63W, 6th P.M.  
600' FSL 600' FEL

FIGURE #4



Access Road



APPROXIMATE ACREAGES  
UN-RECLAIMED AREA =  $\pm$  1.187 ACRES



RE-HABBED AREA

UINTAH ENGINEERING & LAND SURVEYING  
85 So. 200 East \* Vernal, Utah 84078 \* (435) 789-1017



# EOG RESOURCES, INC.

LOCATION DRAWING FOR  
CRITTER CREEK #08-14H  
SECTION 14, T11N, R63W, 6th P.M.  
600' FSL 600' FEL

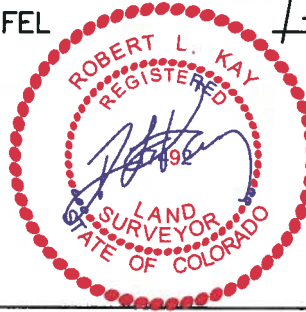


SCALE: 1" = 400'  
DATE: 12-21-09  
DRAWN BY: D.R.B.

14

## PLANT COMMUNITY

- ☐ DISTURBED GRASSLAND
- ☐ NATIVE GRASSLAND
- ☐ SHRUB LAND
- ☐ PLAINS RIPARIAN
- ☐ MOUNTAIN RIPARIAN
- ☐ FOREST LAND
- ☐ WETLANDS AQUATIC
- ☐ ALPINE
- ☐ OTHER (Describe): \_\_\_\_\_



1921 Brass Cap,  
0.2' Below Surface  
of 2-Track, Wood  
Post, N-S Fence  
Lat: 40.922442°  
Long: 104.390514°

1/4 Section Line

## CURRENT LAND USE

- CROP LAND: ☐ IRRIGATED ☐ DRY LAND ☐ IMPROVED PASTURE ☐ HAY MEADOW ☐ CRP  
NON-CROP LAND: ☐ RANGELAND ☐ TIMBER ☐ RECREATIONAL ☐ OTHER (Describe) \_\_\_\_\_  
SUBDIVIDED: ☐ INDUSTRIAL ☐ COMMERCIAL ☐ RESIDENTIAL \_\_\_\_\_

## FUTURE LAND USE

- CROP LAND: ☐ IRRIGATED ☐ DRY LAND ☐ IMPROVED PASTURE ☐ HAY MEADOW ☐ CRP  
NON-CROP LAND: ☐ RANGELAND ☐ TIMBER ☐ RECREATIONAL ☐ OTHER (Describe) \_\_\_\_\_  
SUBDIVIDED: ☐ INDUSTRIAL ☐ COMMERCIAL ☐ RESIDENTIAL \_\_\_\_\_

1/4 Section Line

1/16 Section Line

1/16 Section Line

KENYON K.  
AYARS

Well

EAST 600'  
to Property Line

S78°W 2752' to Powerline

N07°E 4701' to Public Road

N25°E 18.7 Miles  
to Railroad

N44°E 8623' to Building

N45°E 2420' to Water Well

Existing Fenceline

Existing Fenceline

SOUTH 600'  
to Property Line

Section Line

1 1/2" Pipe, 0.4'  
High, Fenceline, Post  
Lat: 40.915236°  
Long: 104.400006°

S89°57'19"W - 2619.97' (Meas.)

LLOYD S. LAMBERTSON

Existing Fenceline

Set UELS Alum. Cap  
0.2' High, Post,  
Fence Corner  
Lat: 40.915242°  
Long: 104.390528°

UINTAH ENGINEERING & LAND SURVEYING

85 So. 200 East \* Vernal, Utah 84078 \* (435) 789-1017

ROBERT J. BURBACH

Section Line  
N00°05'31"E - 2623.88' (Meas.)