



SUPERIOR
WELL SERVICES
Black Lick, Pa.
Mercer, Pa.
Wooster, Oh.
Cleveland, Ok.
Trinidad, Co.

SINGLE INDUCTION LOG

Company	Pioneer Natural Resources	Company	Pioneer Natural Resources
Well	Lorencito 9-36-33-67	Well	Lorencito 9-36-33-67
Field	Purgatoire River	Field	Purgatoire River
County	Las Animas	County	Las Animas
State	Colorado	State	Colorado
Location:	API # : 1509' FSL & 705' FEL	Other Services CDL	
Permanent Datum	SEC 36 TWP 33S RGE 67W	Elevation	
Log Measured From	Ground Level	K.B. 7256'	
Drilling Measured From	Kelly Bushing 4' Above G.L.	D.F. -----	
	Kelly Bushing	G.L. 7252'	
Date	4-13-07		
Run Number	One		
Depth Driller	1870'		
Depth Logger	1870'		
Bottom Logged Interval	1868'		
Top Log Interval	470'		
Casing Driller	8.625" @ 477'		
Casing Logger	474'		
Bit Size	7.875"		
Type Fluid in Hole	Water		
Density / Viscosity	///		
pH / Fluid Loss	///		
Source of Sample	///		
Rm @ Meas. Temp	///		
Rmf @ Meas. Temp	///		
Rmc @ Meas. Temp	///		
Source of Rmf / Rmc	///		
Rm @ BHT	///		
Time Circulation Stopped	4:00 A.M.		
Time Logger on Bottom	9:50 A.M.		
Maximum Recorded Temperature	110 Deg F		
Equipment Number	T701		
Location	Trinidad		
Recorded By	Jennifer Allen		
Witnessed By	Mr. Derrick Berry		

<<< Fold Here >>>

All interpretations are opinions based on inferences from electrical or other measurements and we cannot and do not guarantee the accuracy or correctness of any interpretation, and we shall not, except in the case of gross or willful negligence on our part, be liable or responsible for any loss, costs, damages, or expenses incurred or sustained by anyone resulting from any interpretation made by any of our officers, agents or employees. These interpretations are also subject to our general terms and conditions set out in our current Price Schedule.

Comments

Well Directions:
412 West toward Westen, take left just after large horse farm, will turn directly into a gate. Follow road up hill, stay left all the way up to location.

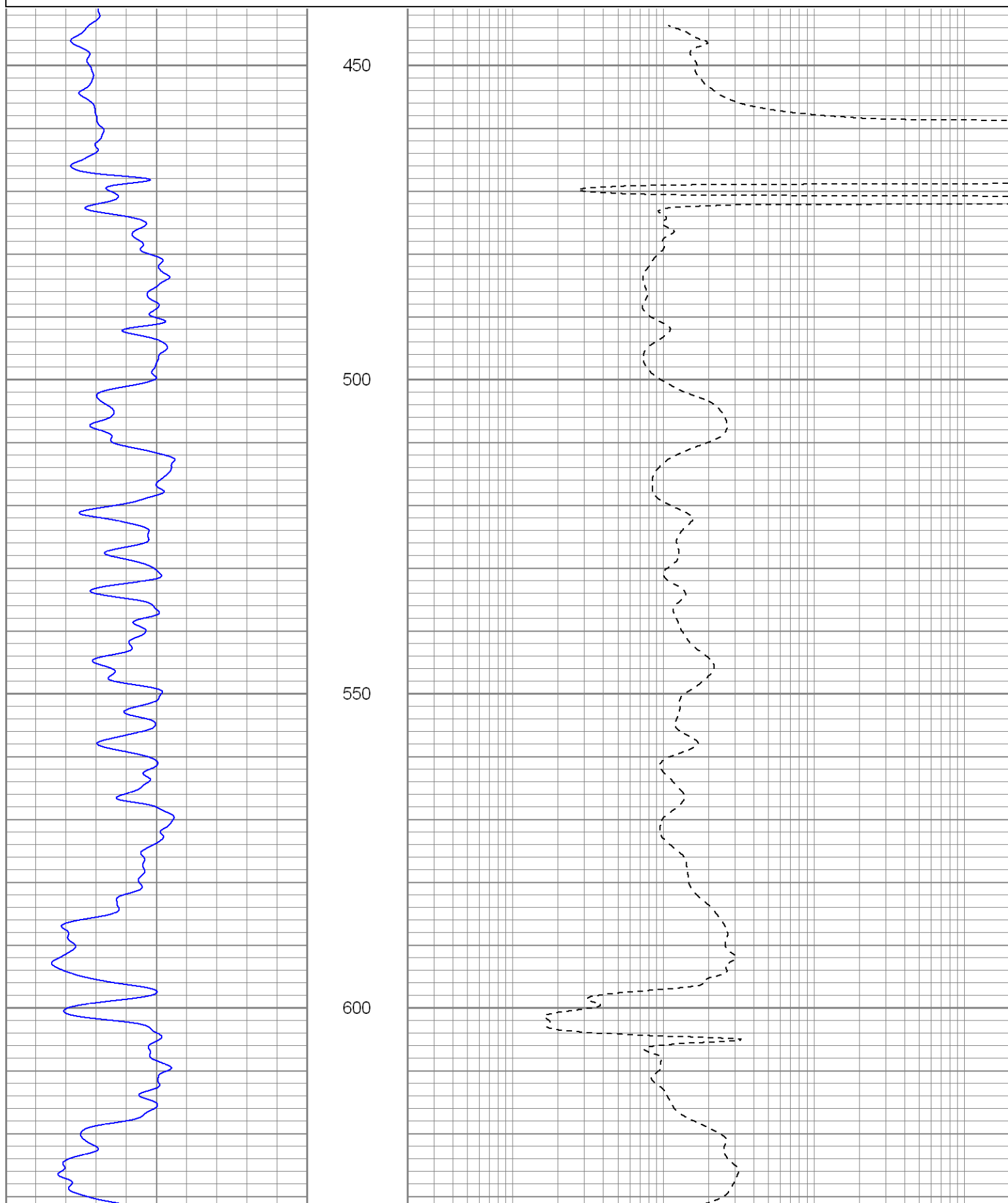


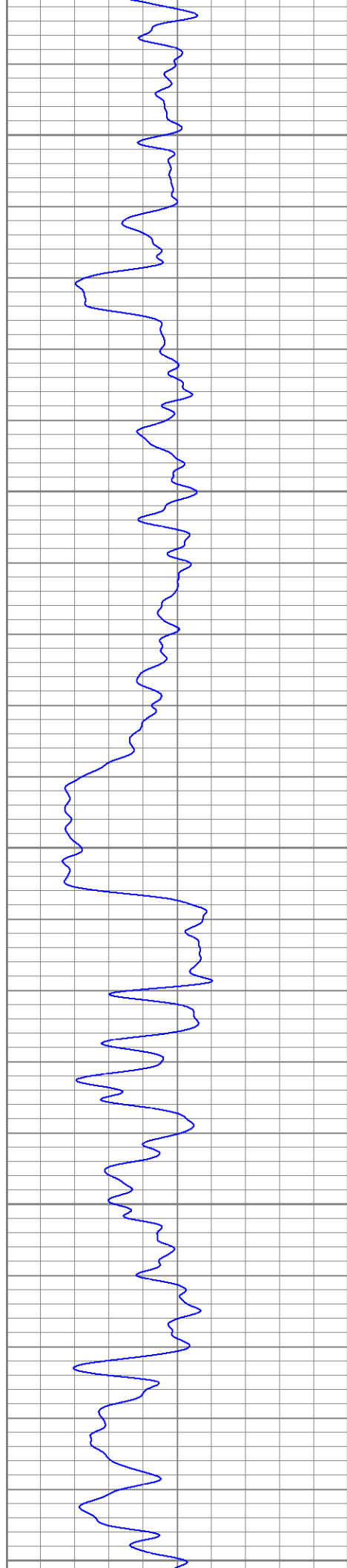
SUPERIOR
Black Lick, Pa.
Mercer, Pa.
Wooster, Oh.
Cleveland, Ok.
Trinidad, Co.

Main Pass

Database File: g:\lorencito9-36-33-67.db
Dataset Pathname: pass2.1
Presentation Format: Unknown
Dataset Creation: Fri Apr 13 10:52:45 2007 by Calc Open-Cased 061129
Charted by: Depth in Feet scaled 1:240

0	GR (GAPI)	200	0.2	DIR (Ohm-m)	2000
---	-----------	-----	-----	-------------	------





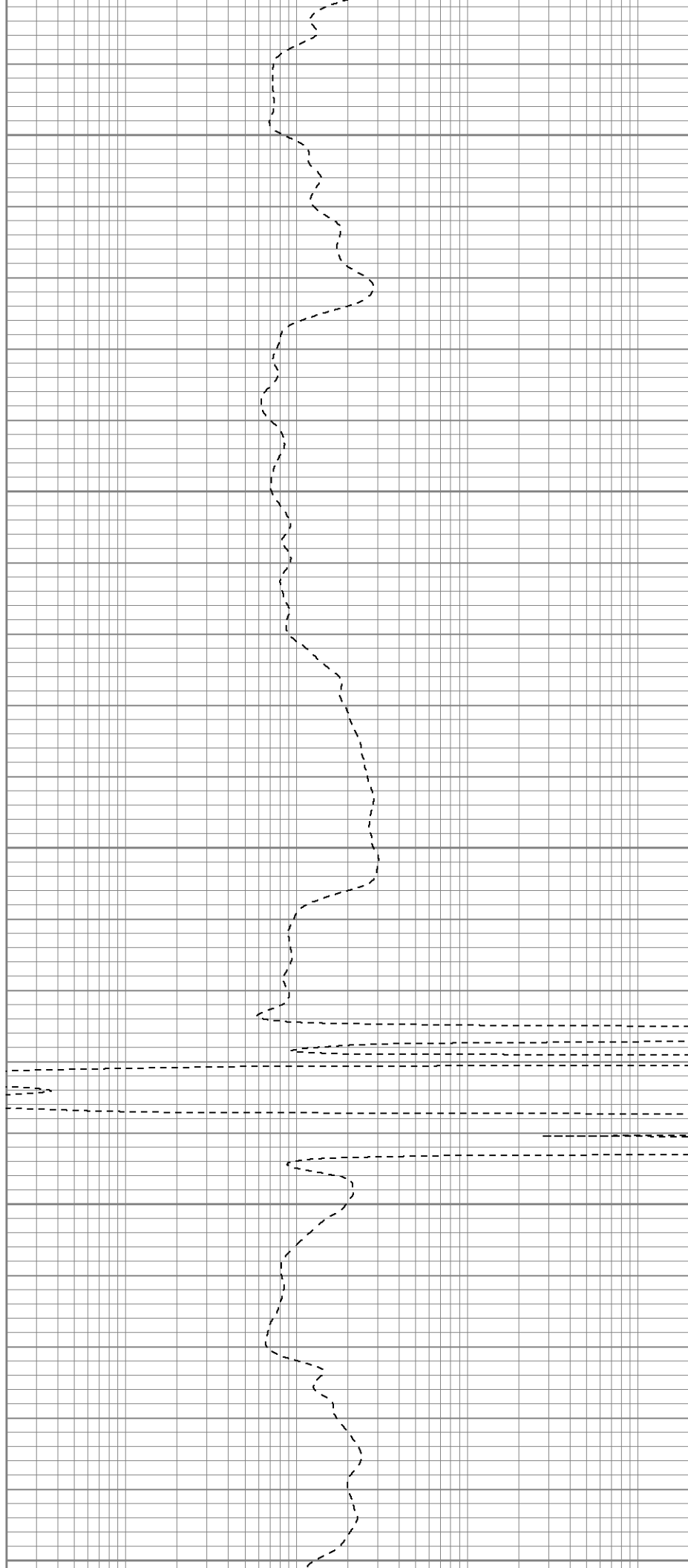
650

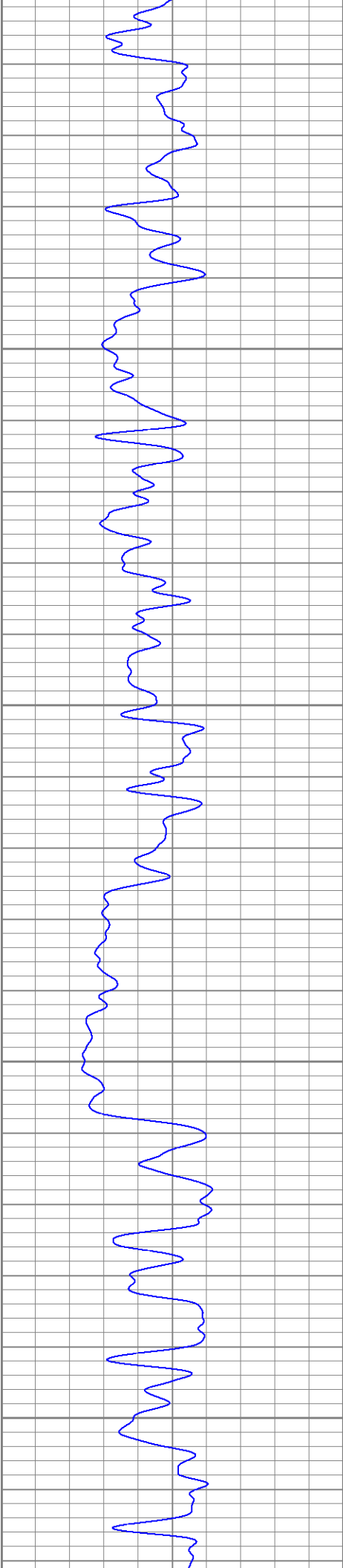
700

750

800

850



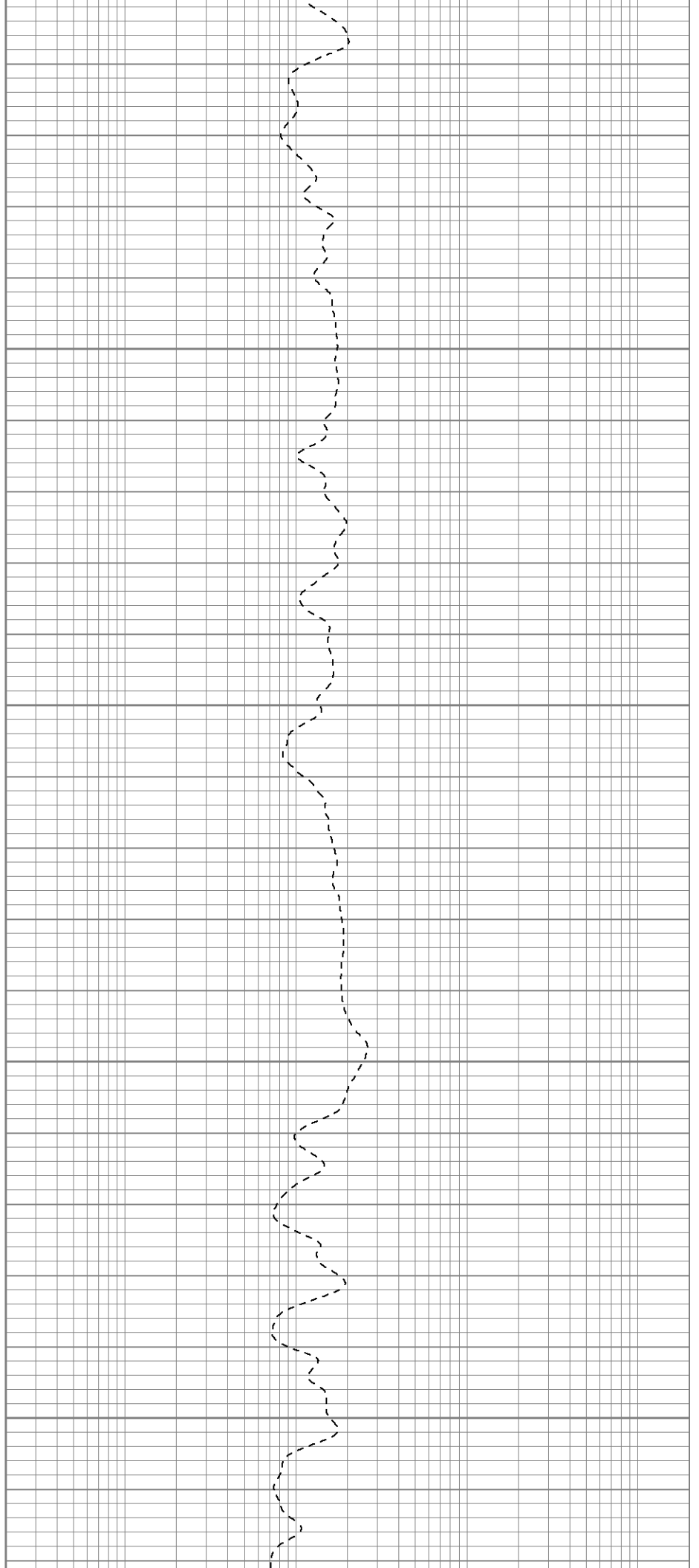


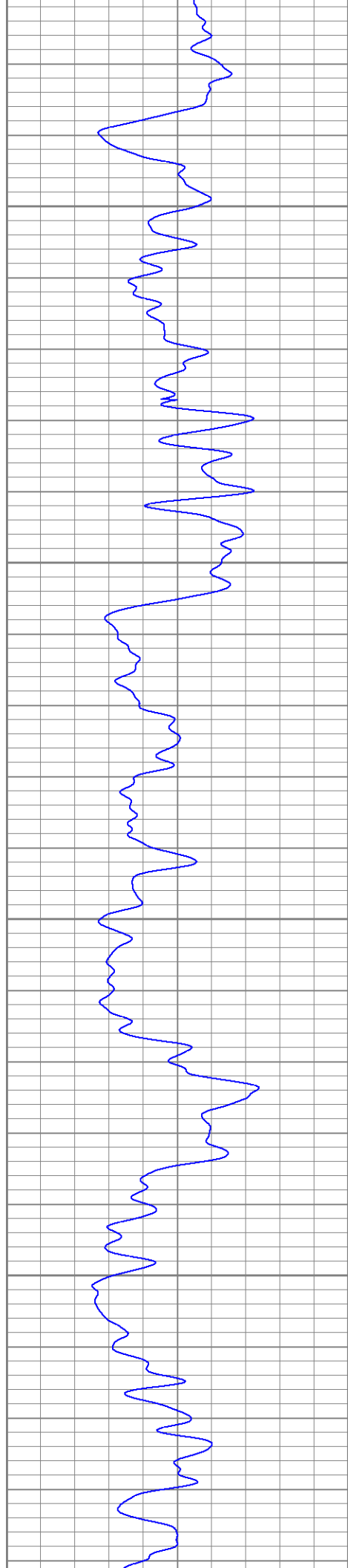
900

950

1000

1050



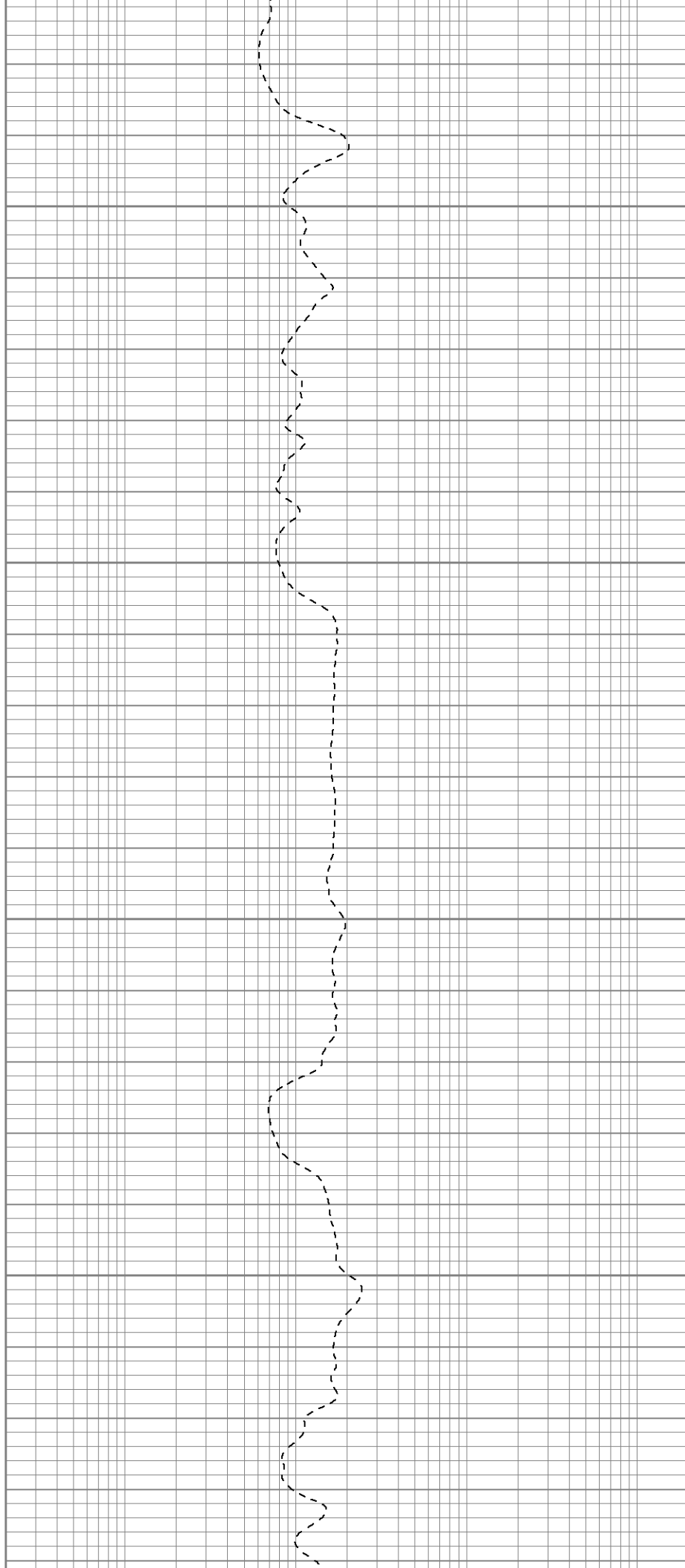


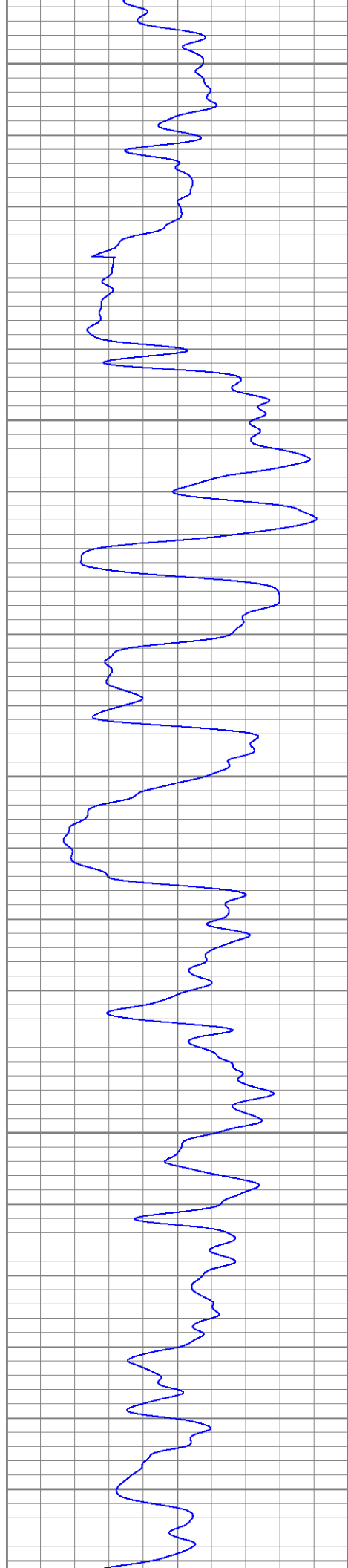
1100

1150

1200

1250





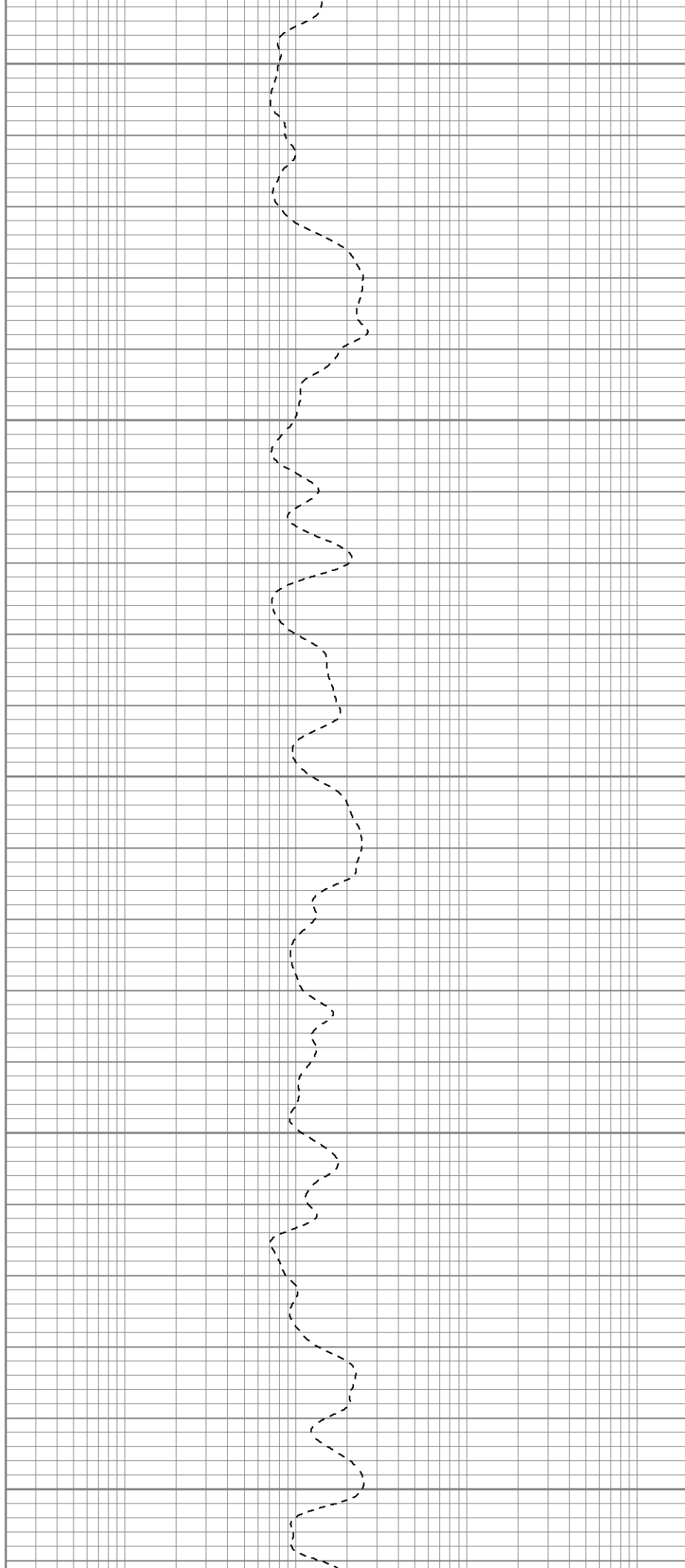
1300

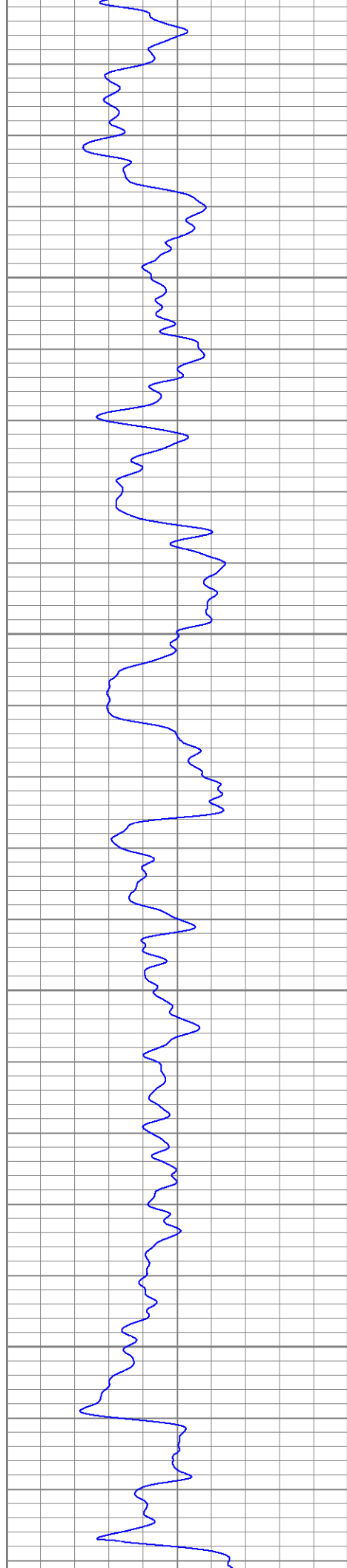
1350

1400

1450

1500



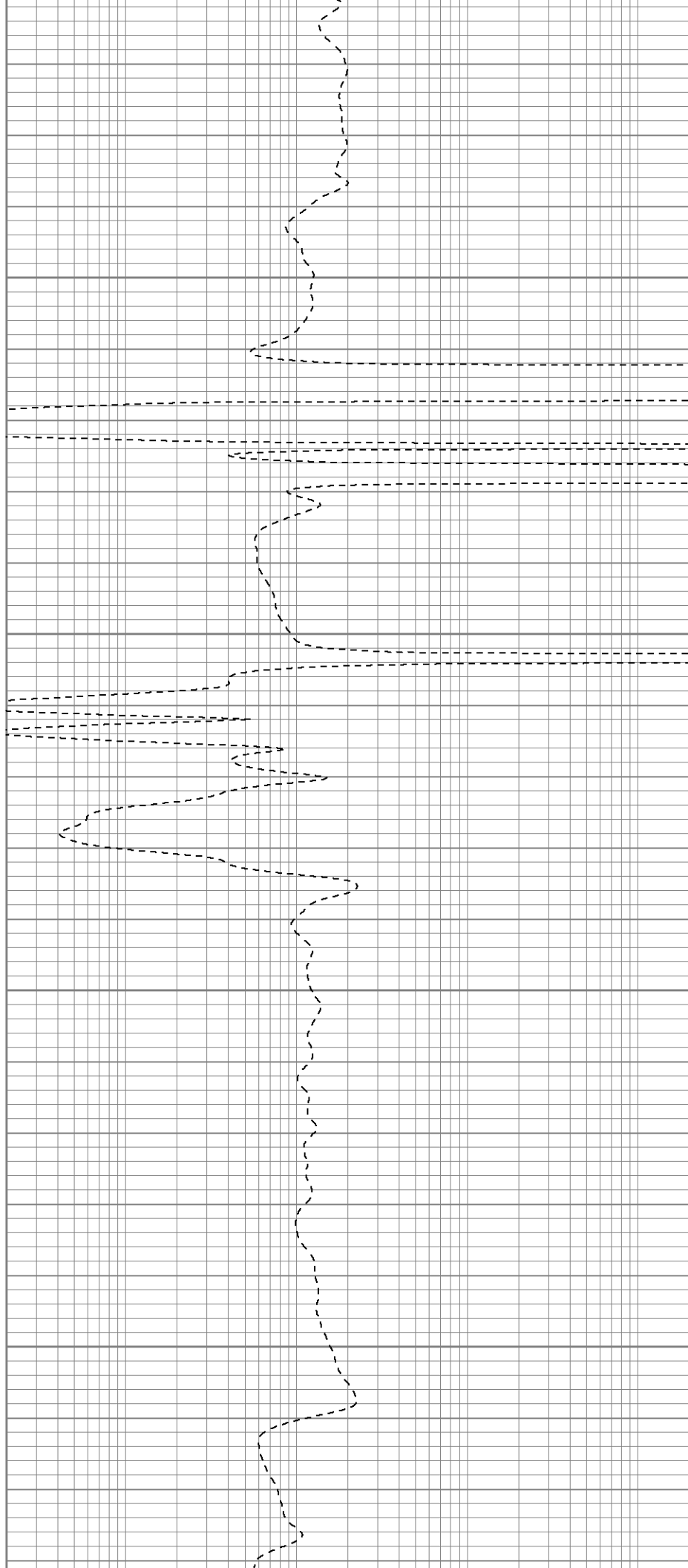


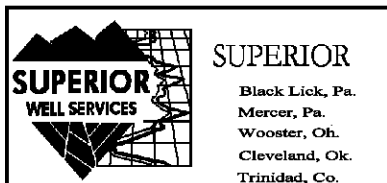
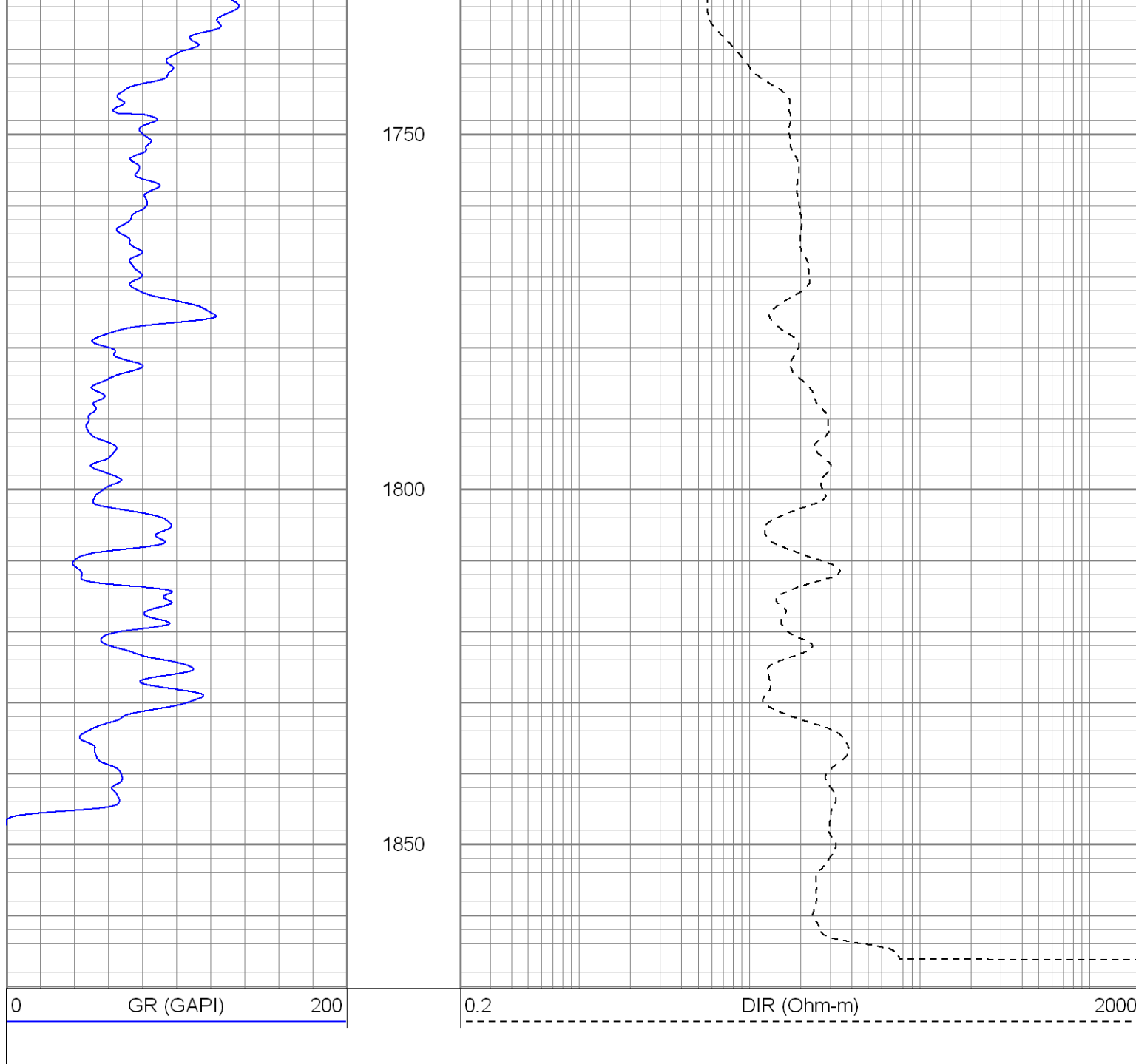
1550

1600

1650

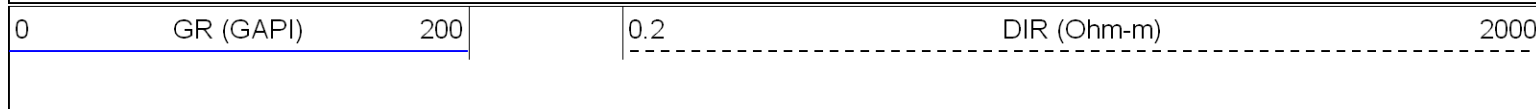
1700

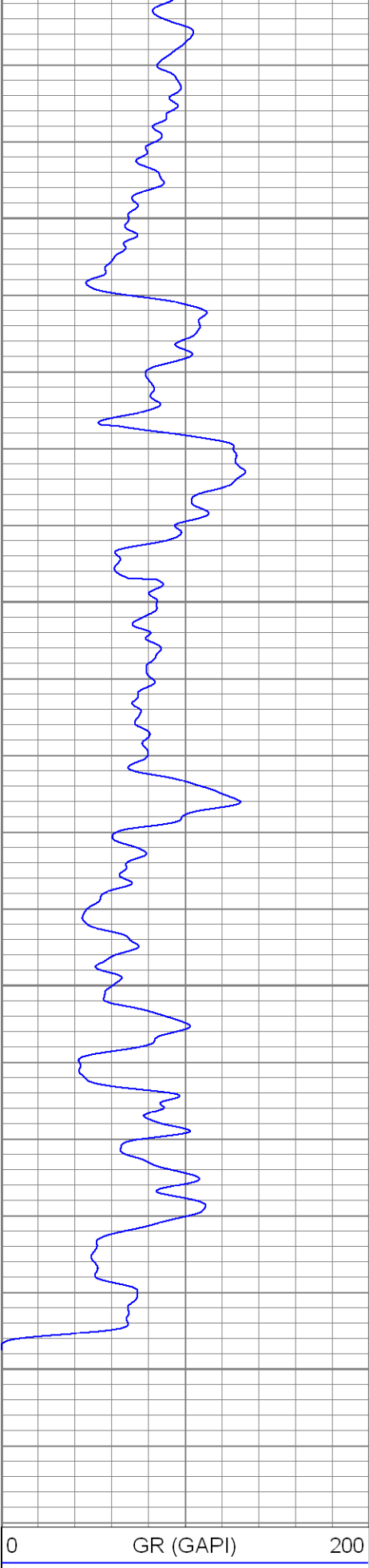




Repeat Section

Database File: g:\lorencito9-36-33-67.db
 Dataset Pathname: pass1.1
 Presentation Format: Unknown
 Dataset Creation: Fri Apr 13 10:11:18 2007 by Calc Open-Cased 061129
 Charted by: Depth in Feet scaled 1:240



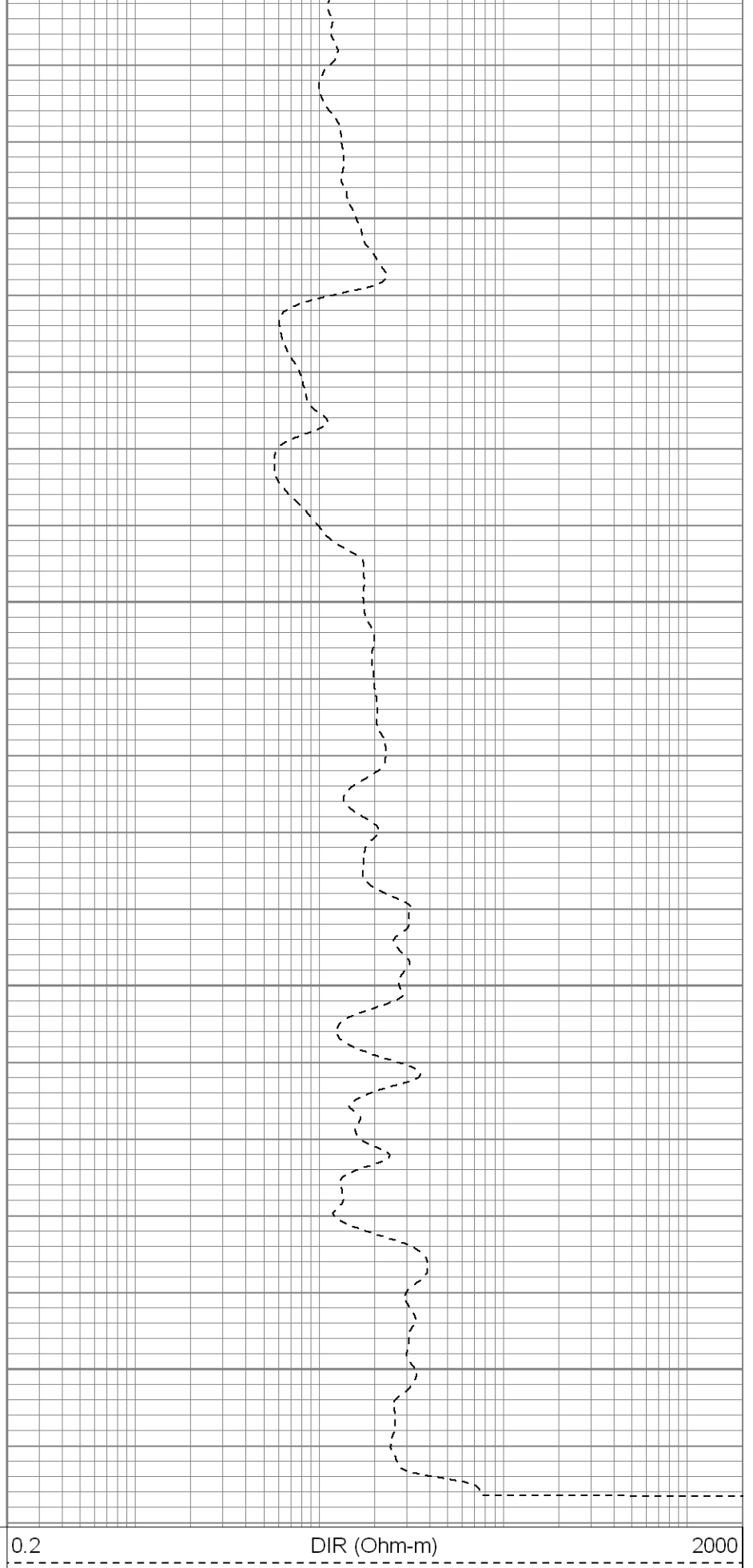


1700

1750

1800

1850



DIR (Ohm-m)

2000

Serial Number: 040903 Tool Model: Probe Downhole Cal Performed: Sun Apr 01 16:29:28 2007 Surface Cal Performed: Sun Apr 01 16:53:33 2007 After Survey Verification Performed:			
Surface Calibration:	Air	Loop	
Conductivity Reference:	0.000	500.000	mmho
Conductivity Reading:	0.009	0.649	V
Internal Reference:	Zero	Cal	
Conductivity Reference:	0.000	500.000	mmho
Conductivity Reading:	0.013	0.649	V
Downhole Calibration:	Internal Zero	Internal Cal	
Conductivity Reference:	0.378	500.034	mmho
Conductivity Reading:	0.335	500.259	V
Short Normal Reference:	0.000	20.000	Ohm-m
Short Normal Reading:	0.006	0.234	V
Results:	Gain	Offset	
Loop Conductivity:	781.229	-7.031	
Downhole Correction:	0.999	0.043	
Short Normal Resistivity:	0.000	2000.000	
After Survey Verification	Internal Zero	Internal Cal	
Conductivity Reading:	0.000	0.000	V
Conductivity Result:	0.000	0.000	mmho
Short Normal Reading:	0.000	0.000	V
Short Normal Result:	0.000	0.000	Ohm-m

Compensated Density Calibration Report




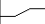





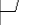




Serial-Model:		901-2.75POH
Source / Verifier:		/
Master Calibration Performed:		Sun Apr 01 17:43:05 2007
Before Survey Verification Performed:		
After Survey Verification Performed:		

Master Calibration					
	Density		Far Detector	Near Detector	
Magnesium	1.710	g/cc	966.13	494.39	cps
Aluminum	2.580	g/cc	173.30	243.84	cps
Spine Angle = 67.64			Density/Spine Ratio = 0.468		
	Size		Reading		
Small Ring	7.75	in	1.92	V	
Large Ring	17.00	in	4.15	V	

Before Survey Verification					
	Target		Measured		
		g/cc			g/cc
		g/cc			g/cc
		g/cc			g/cc

After Survey Verification					
	Target		Measured		
		g/cc			g/cc
		g/cc			g/cc
		g/cc			g/cc

Gamma Ray Calibration Report		
Serial Number:	804	
Tool Model:	2.75POH	
Performed:	Fri Feb 09 00:46:24 2007	
Calibrator Value:	1.0	GAPI
Background Reading:	0.0	cps
Calibrator Reading:	1.0	cps
Sensitivity:	0.3100	GAPI/cps

Sensor	Offset (ft)		Schematic		Description	Len (ft)	OD (in)	Wt (lb)
CHD	26.37				None	0.75	1.50	5.00
GR	24.84				GR-2.75POH (804) Probe	3.73	2.75	43.00
					CDL-2.75POH (901) Probe	8.43	2.75	106.00
LSD	16.21				IEL-Probe (040903)	13.46	2.75	93.00
DCAL	15.94							
SSD	15.69							
DIC	6.24							
SP	2.25							
SN	1.71							
		Dataset:		/field/well/run/_plots/_jobs_/s				
		Total Length:		26.37 ft				
		Total Weight:		247.00 lb				
		O.D.		2.75 in				